

GEOLOGICAL SURVEY BRANCH
ASSESSMENT REPORTS

DATE RECEIVED

JUL 28 1995

GEOPHYSICAL REPORT
(Covering Magnetometer and VLF Work Done)
Fran Claim (Record #325073)

Fort Steele Mining Division
NTS#82G/5W
Lat.49°22'30'', Long.115°50'0''

Owner:G.Rodgers, P.Eng.

Work and Report by:G.Rodgers, P.Eng.
P.O.Box 63,
Skookumchuck, B.C. V0B 2E0

July 10, 1995

FILMED

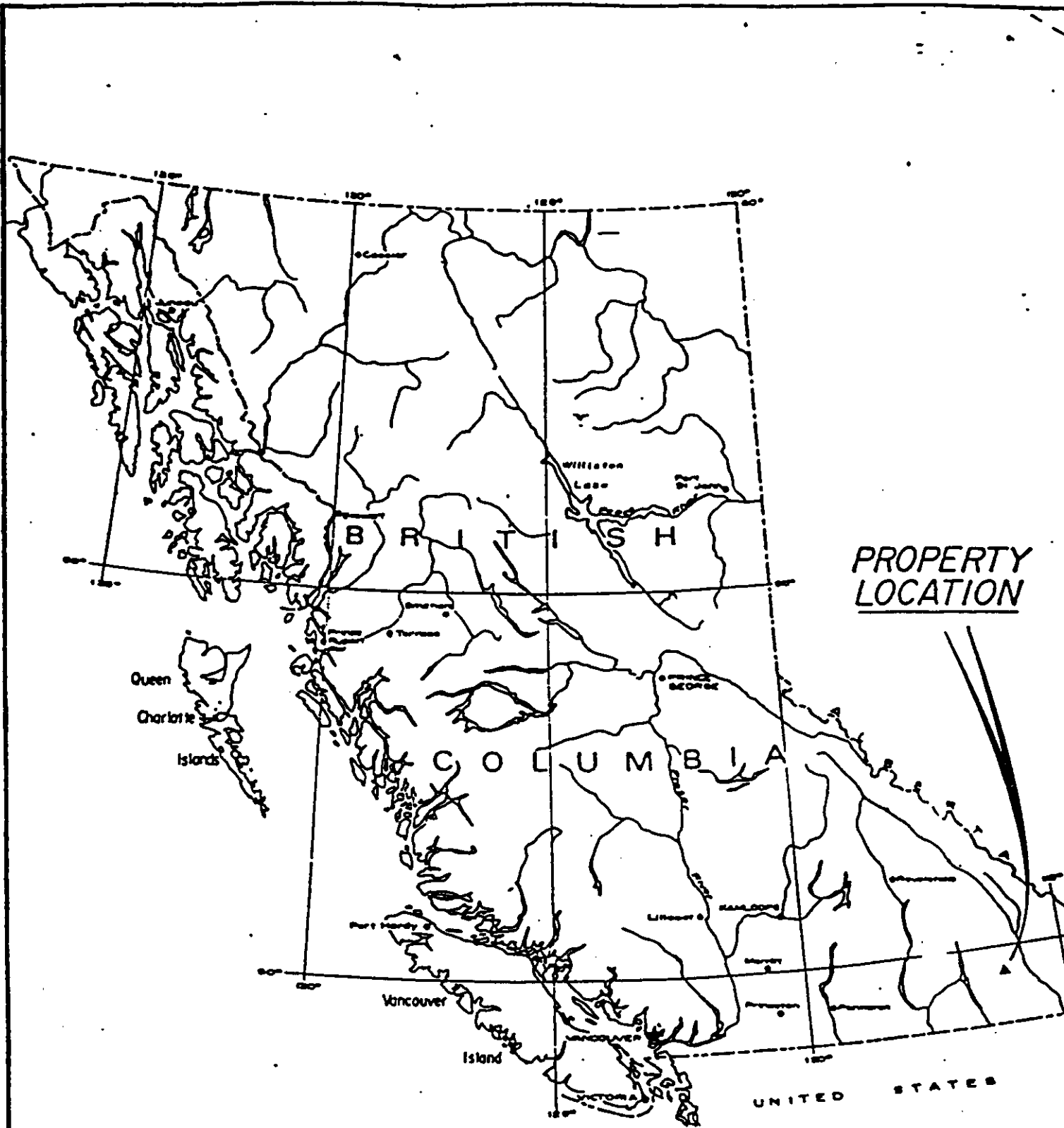
**GEOLOGICAL BRANCH
ASSESSMENT REPORT**

23,990

Table of Contents

Introduction	P. 3b
Geophysical Survey	P.
Interpretation & Conclusions . . .	P. 4
Fig.1, Location Map	P.2
Fig.2, Claim Map (1:31,680)	P.3
Fig.3, Cadastral & Grid (1:10,000)	P.5
Fig.4, Fran Mag (1:5000)	P.6
Fig 5, Fran VLF'95 (color, 1:2500)	P.7
Fig.6a, " " " (1:5000)	P.8
Fig.6b, VLF, Field Strength 1:5000	P.9
Fig.6c, VLF, In-Phase 1:5000	P.10
Fig.6d, VLF, Out-Of-Phase 1:5000	P.11
Statement of Costs	P.12
Statement of Qualifications	P.13

Appendix 1; Raw Data

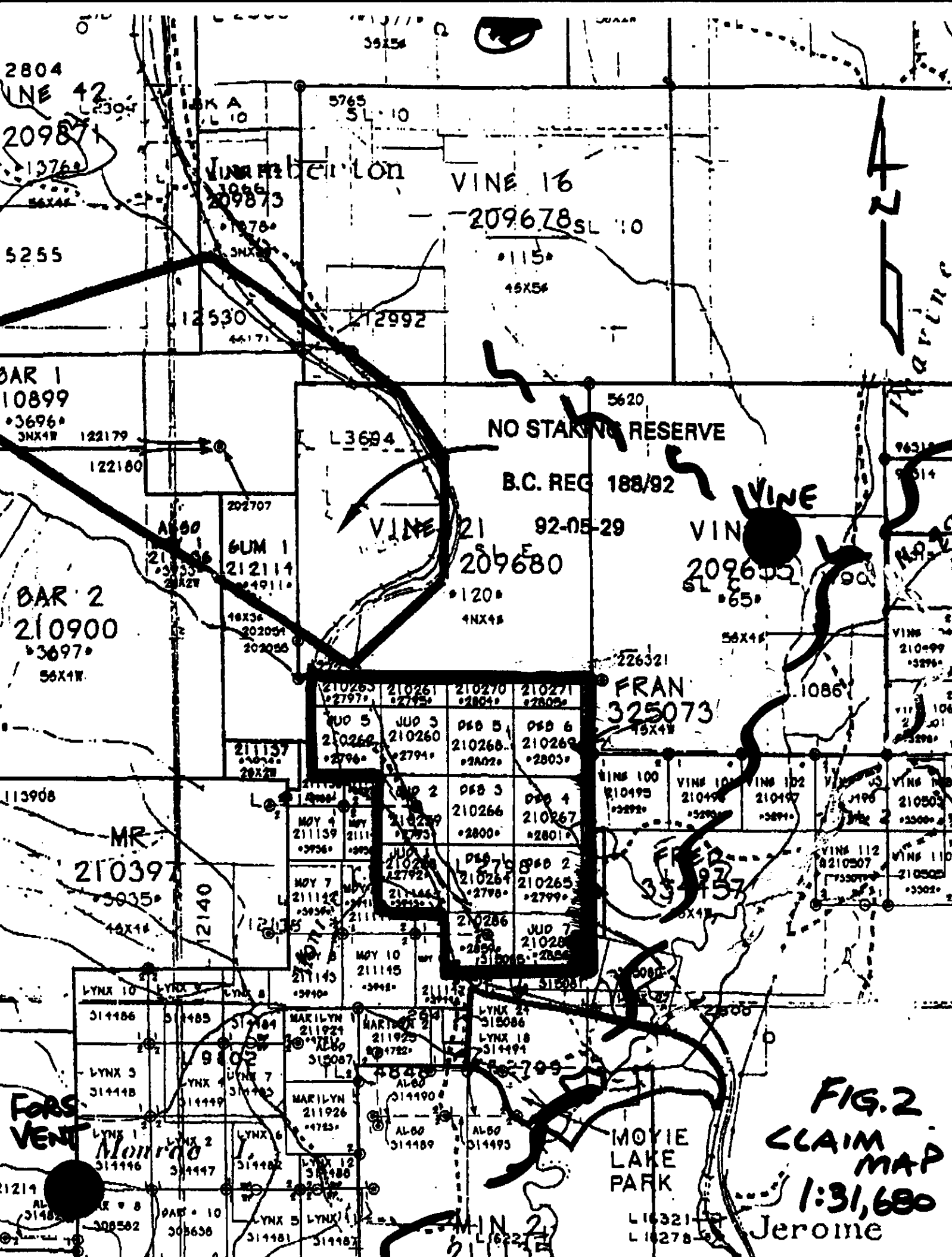


PROPERTY
LOCATION

Figure 1

LOCATION MAP

SCALE
Km. 100 50 0 100 200 300 400 Km



2804
LINE 42
20987
1376

VINE 16
209678 SL 10

VINE 16
209678 SL 10

115

49X54

12530

12992

BAR 1
10899
3696
3NX4W

NO STAKING RESERVE

B.C. REG 188/92

92-05-29

VINE

VINE
209652
SL 65

BAR 2
210900
3697
56X4W

VINE 21

209680

120

4NX4B

FRAN
325073
45X4W

210265 2797	210261 2795	210270 2804	210271 2805
JUN 5 210268 2796	JUN 3 210260 2794	DEC 5 210268 2802	DEC 6 210269 2803
MAY 4 211139 2936	MAY 2 210259 2793	DEC 3 210266 2800	DEC 4 210267 2801
MAY 7 211122 2934	JUN 1 210258 2792	DEC 2 210264 2798	DEC 2 210265 2799
MAY 8 211145 2940	MAY 10 211145 2942	JUN 7 210286 2806	JUN 7 210287 2807

MR
21039
3035

VINE 100 210495 2892
VINE 101 210496 2893
VINE 102 210497 2894
VINE 103 210498 2895
VINE 104 210501 2898
VINE 105 210502 2899
VINE 106 210503 2900
VINE 107 210504 2901
VINE 108 210505 2902
VINE 109 210506 2903
VINE 110 210507 2904
VINE 111 210508 2905
VINE 112 210509 2906
VINE 113 210510 2907
VINE 114 210511 2908
VINE 115 210512 2909
VINE 116 210513 2910

FORS
VENT

MOYIE
LAKE
PARK

FIG. 2
CLAIM
MAP
1:31,680
Jerome

L16321
L16278

INTRODUCTION

The property is located 1½km north-west of the north end of Moyie Lake, approximately 15km south of Cranbrook, B.C.(see fig.1).

The property consists of hilly and flat areas vegetated with fir and pine. Some logging has taken place recently. Access is via highway #3 to either Hidden Valley Road or to a logging road at Fassifern which leads to the north end of the property.

The property has had almost no work done on it in spite of over \$2m being spent on exploration each on the Vine property to the north-east and the Fors property to the south-west. Most surface rights are privately held and a section 35 (Mineral Tenure Act) concerning the property was recently decided in favour of the author (EMPR file#13825-02-981). One drill hole only is known of (see fig.3) which was located in the "rock pit" and drilled only to about 65m.

The property is underlain by argillites and quartzites of the Middle Aldridge Formation. A large gabbro sill lies in the north-west corner. Depth to Sullivan Time is thought to be in the order of 600 - 1200 meters on the property.

Geophysical Survey

Approximately 7 line kilometers with readings taken every 10m were worked over the north end of the property (see fig.3). Magnetometer and VLF readings were taken using a Gem System (GSM-19) Overhauser Magnetometer and VLF. All magnetic measurements were done in nano-Teslas (nT) using only vertical magnetic component corrected for diurnal variation. All VLF measurements used vertical component in-phase and out-of-phase (%) and total field strength (pT).

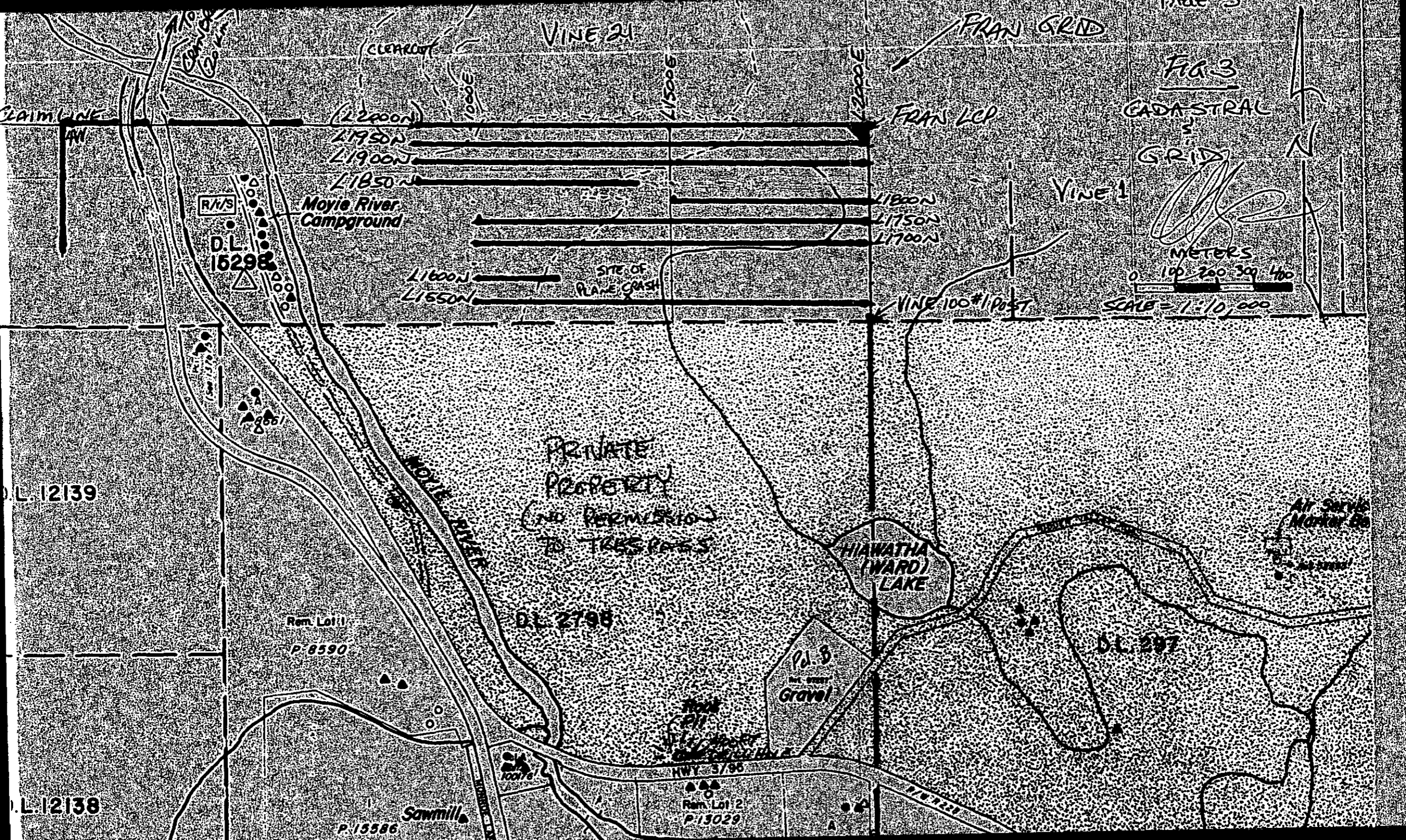
Interpretation of Results and Conclusions

Three weak magnetometer trends are apparent striking approximately Az060° across the grid area. (see fig.4). The small anomalies at 1410E and 1460E are discounted as this is the site of a plane crash with a debris field of 50m. At the west end of the grid area a geological contact with an underlying gabbro sill is apparent. The gabbro sill can be seen in a few outcrops and by abundant float. It contains in places magnetite and illmenite.

The VLF results (see figs.5-6D) roughly confirm the above with several weak to moderate conductor's being apparent. Again, the plane crash site readings are spurious and the gabbro / sediment contact can be seen.

No strong magnetic anomalies were observed, only weak to moderate point or near point anomalies. VLF conductors are weak to moderate as evidenced by mostly point anomalies in the field strength.

Three possible linears appear to parallel bedding (see figs.4 & 5).



VINE 21

FRAN GRID

FIG. 3

CADASTRAL

GRID

VINE 1

METERS

0 100 200 300 400

SCALE = 1:10,000

(CLEARCUT)

FRAN LCP

21950N

21900N

21850N

Moyie River
Campground

21800N

21750N

21700N

21600N

21550N

SITE OF
PLANE CRASH

VINE 100*1 POST

PRIVATE
PROPERTY
(no permission
to trespass)

HIAWATHA
(WARD)
LAKE

Air Service
Marker Co.

CLAIM LINE

R/S

D.L.
15298

D.L. 12139

Rem. Lot 1

P. 8590

D.L. 2798

R/S
Gravel

D.L. 297

D.L. 12138

Sawmill

P. 15586

HWY. 3/96

Rem. Lot 2

P. 15029

A

FRAN
MAGNETOMETER

TOTAL VERTICAL
FIELD
1:5000
SCALE

57,300 nT = DATUM
1cm = 150 nT
VERTICAL

Gsm-19
OVERHAUSER
MAGNETOMETER

ALL READINGS
CORRECTED FOR
DIURNAL VARIATION
EXCEPT FOR
L1600 (NO CORRECTION)
L1550 " " "

FIG. 4

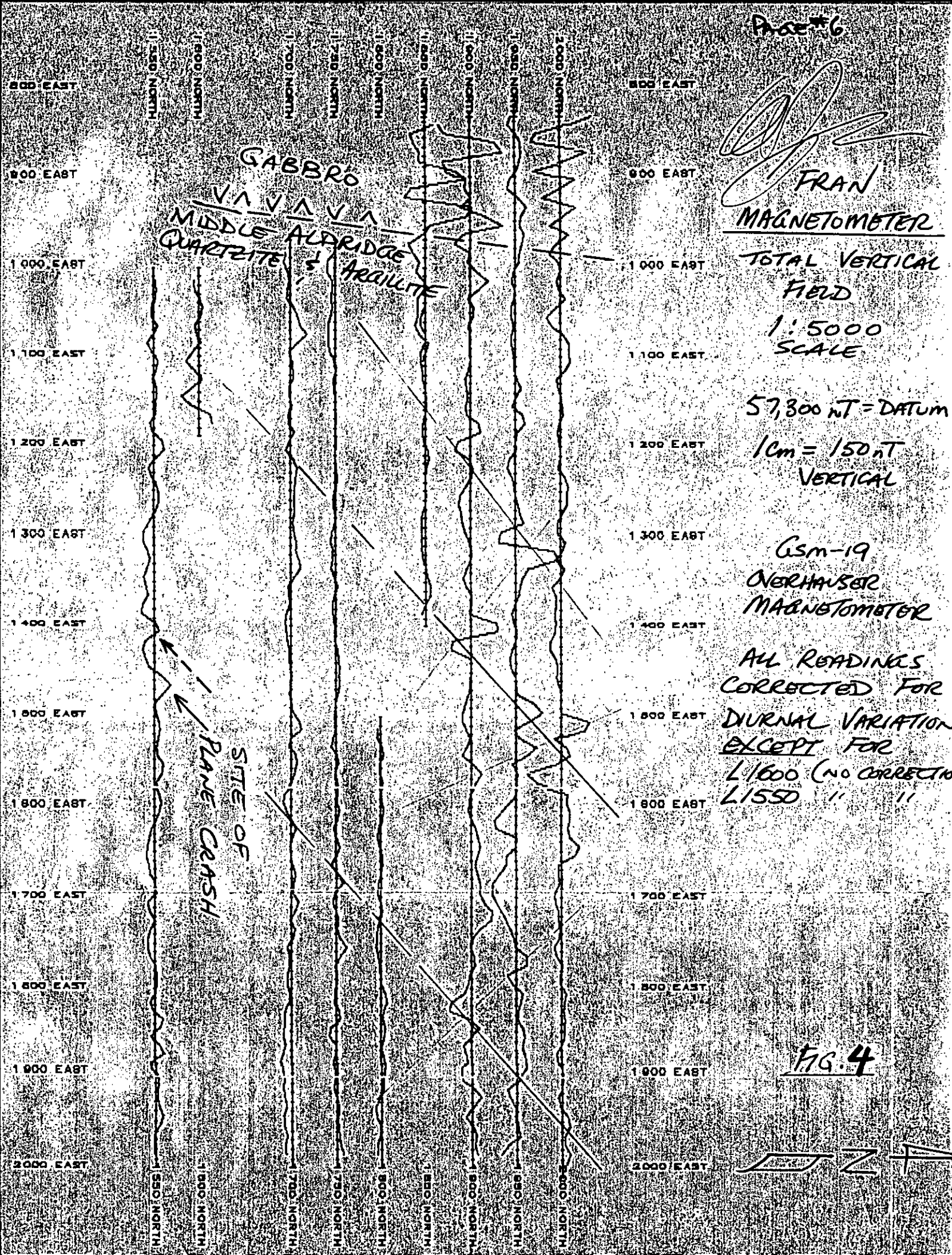


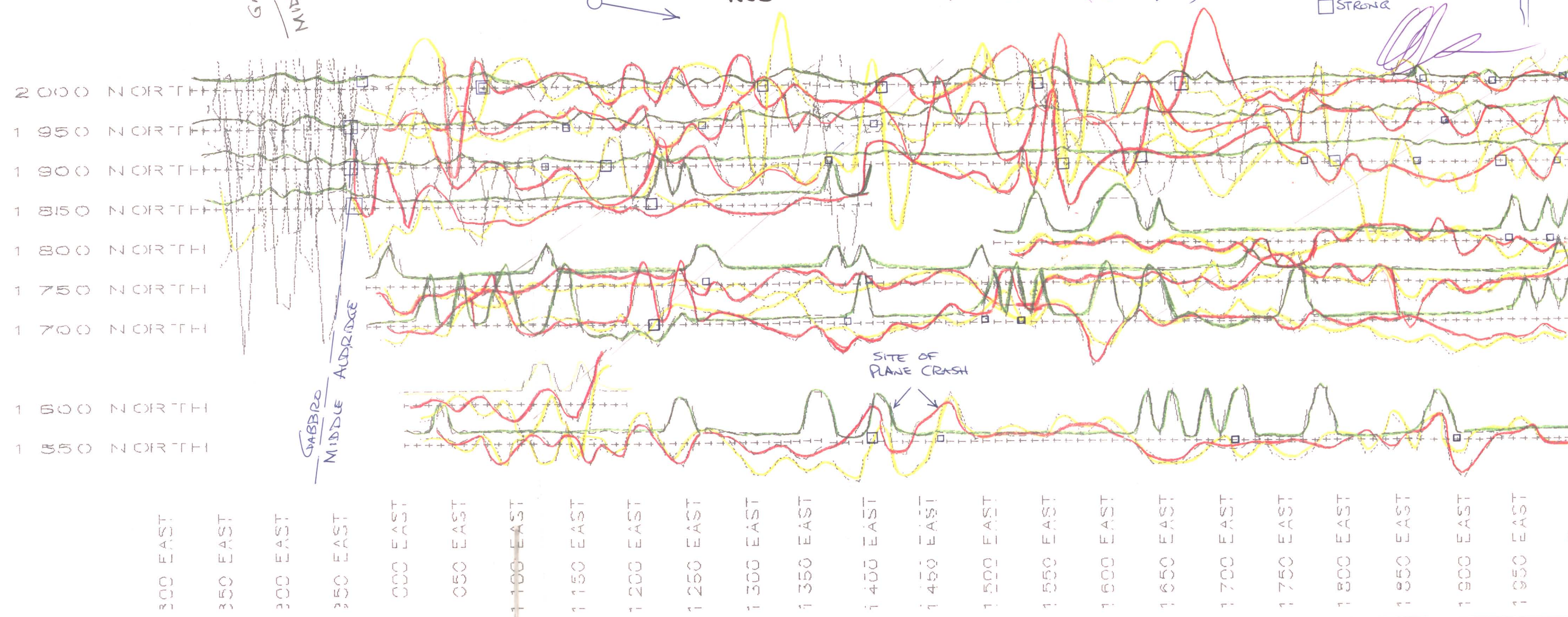
FIG. 5
SCALE = 1:2500

GABBR0
MIDDLE
ADDRESS

FRAN ; VLF '95,
ANNAPOLIS

GREEN = FIELD STRENGTH (PT) (0.1 PT/mm)
YELLOW = IN PHASE % (0.5 nT/mm)
RED = OUT-OF-PHASE % (0.5 nT/mm)

POSSIBLE CONDUCTORS
□ WEAK
□ MODERATE
□ STRONG



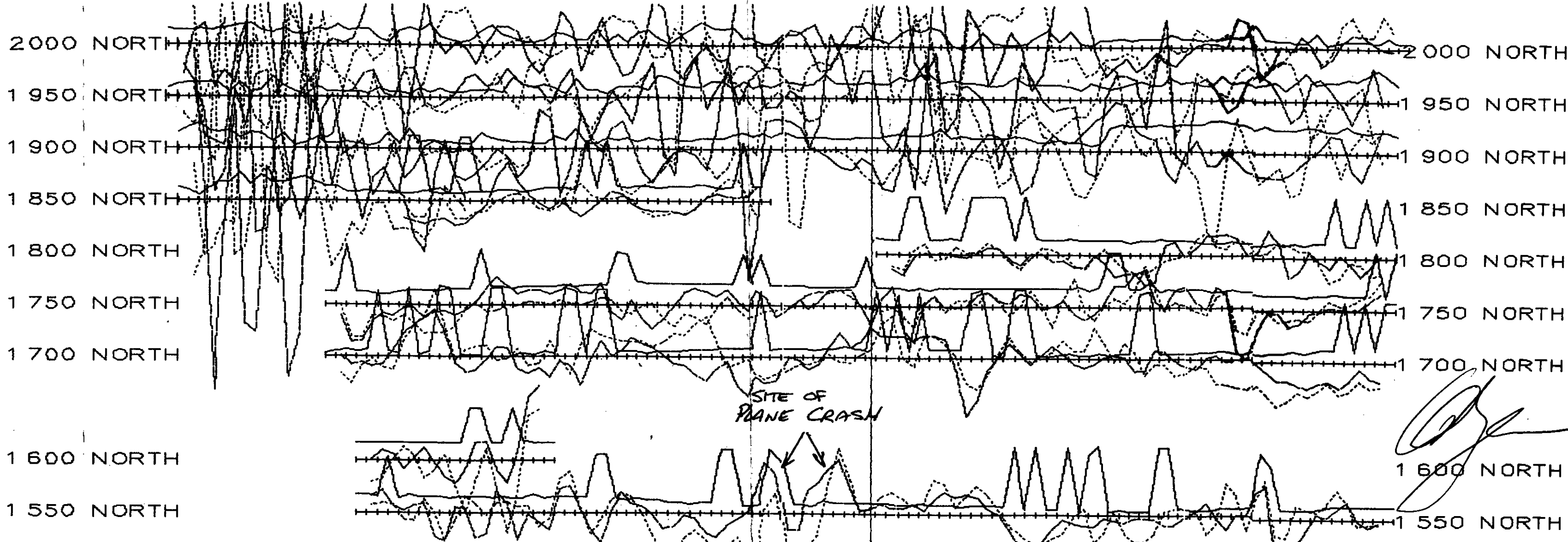
[Handwritten signature]

SITE OF PLANE CRASH

GABBR0
MIDDLE
ADDRESS

2000 NORTH
1950 NORTH
1900 NORTH
1850 NORTH
1800 NORTH
1750 NORTH
1700 NORTH
1600 NORTH
1550 NORTH

300 EAST
350 EAST
400 EAST
450 EAST
500 EAST
550 EAST
600 EAST
650 EAST
700 EAST
750 EAST
800 EAST
850 EAST
900 EAST
950 EAST
1000 EAST
1050 EAST
1100 EAST
1150 EAST
1200 EAST
1250 EAST
1300 EAST
1350 EAST
1400 EAST
1450 EAST
1500 EAST
1550 EAST
1600 EAST
1650 EAST
1700 EAST
1750 EAST
1800 EAST
1850 EAST
1900 EAST
1950 EAST



[Handwritten signature]

FIG. 6A

**COMPLETE VLF
PROFILES, 1:5000
ANNAPOLIS**

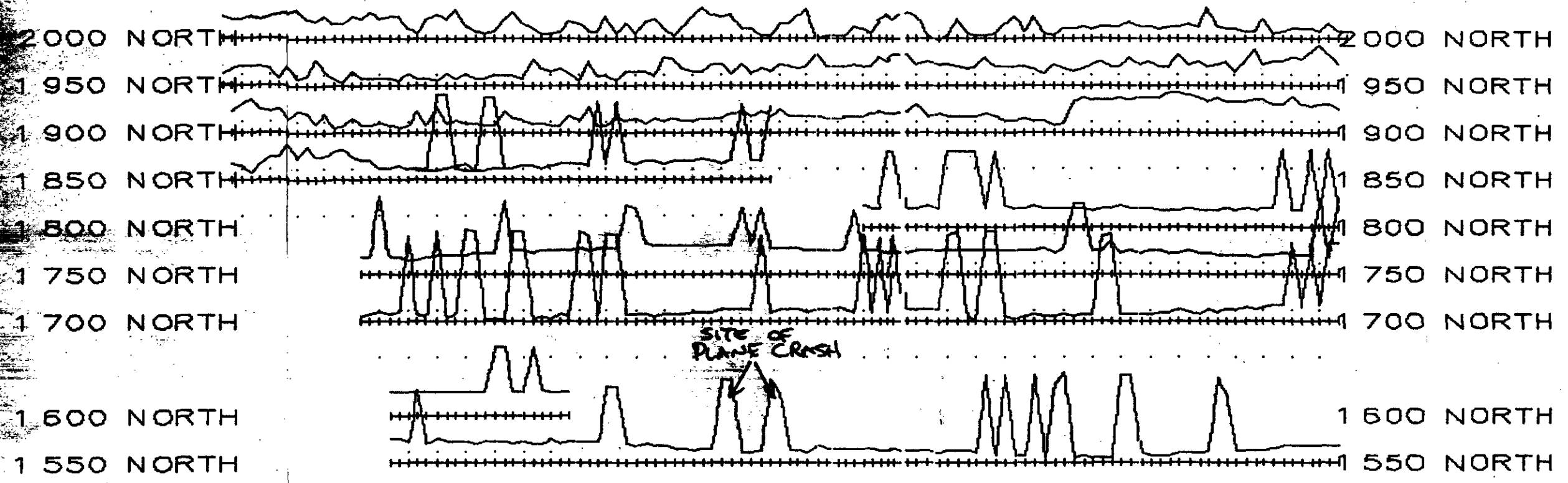
SCALE = 1:5000

0.5 NT/mm & 0.1 PT/ma (F.S.)

ANNAPOLIS
↘

800 EAST 850 EAST 900 EAST 950 EAST 1000 EAST 1050 EAST 1100 EAST 1150 EAST 1200 EAST 1250 EAST 1300 EAST 1350 EAST 1400 EAST 1450 EAST 1500 EAST 1550 EAST 1600 EAST 1650 EAST 1700 EAST 1750 EAST 1800 EAST 1850 EAST 1900 EAST 1950 EAST 2000 EAST

800 EAS
 850 EAS
 900 EAS
 950 EAS
 1 000 E'
 1 050 E'
 1 100 E'
 1 150 E'
 1 200 E'
 1 250 E'
 1 300 E'
 1 350 E'
 1 400 E'
 1 450 E'
 1 500 E'
 1 550 E'
 1 600 E'
 1 650 E'
 1 700 E'
 1 750 E'
 1 800 E'
 1 850 E'
 1 900 E'
 1 950 E'
 2 000 E'




ANNAPOLIS →

800 EAST
 850 EAST
 900 EAST
 950 EAST
 1 000 EAST
 1 050 EAST
 1 100 EAST
 1 150 EAST
 1 200 EAST
 1 250 EAST
 1 300 EAST
 1 350 EAST
 1 400 EAST
 1 450 EAST
 1 500 EAST
 1 550 EAST
 1 600 EAST
 1 650 EAST
 1 700 EAST
 1 750 EAST
 1 800 EAST
 1 850 EAST
 1 900 EAST
 1 950 EAST
 2 000 EAST

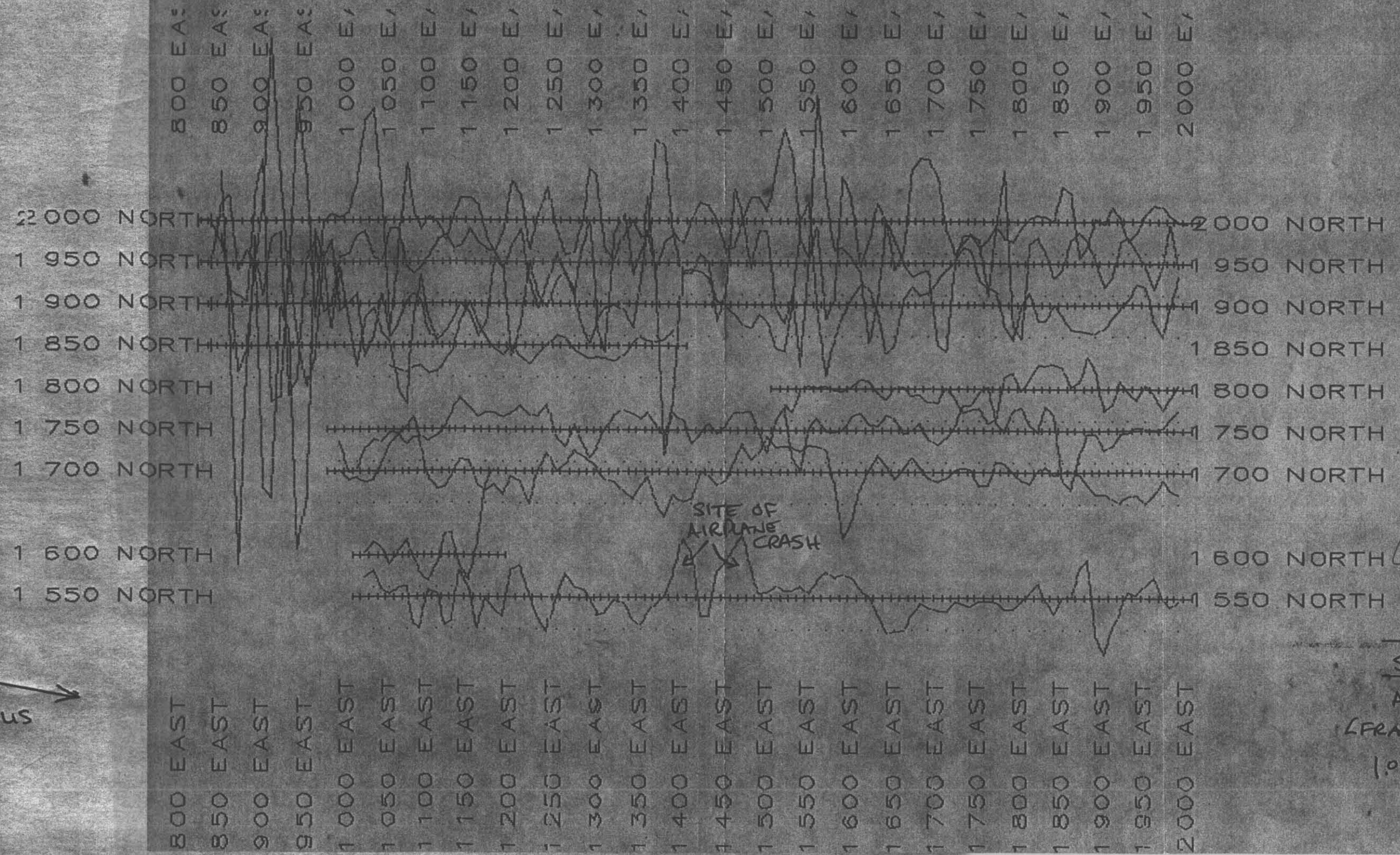
FIG. 6B
 VLF, FIELD STRENGTH
 SCALE = 1:5000
 ANNAPOLIS
 LFRANVLF. 23FRAN.VEC
 0.2 PT/mm



ANNAPOLIS


 FIG. 6C
 VLF, VERT. IN-PHASE
 SCALE = 1:5000
 ANNAPOLIS
 (FRAN YLF 21 FRAN VEC
 1.0 NT/mm

ANNAPOLIS



[Handwritten signature]

FIG. 6D
VLF, OUT-OF-PHASE

SCALE = 1:5000

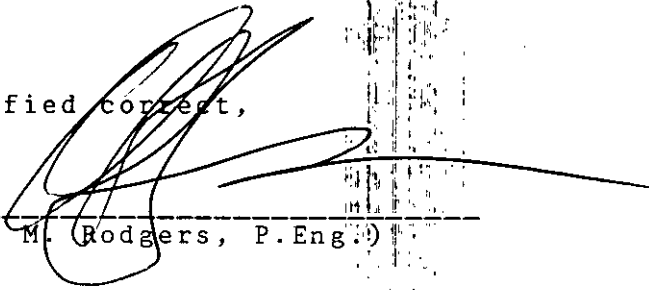
ANNAPOLIS
(FRAN VLF, 22 FRAN VEC)

1.0 nT/mm

Statement of Costs

4 days of GSM-19 surveying (approx. 700 readings) @ \$500./day (or)	
G.Rodgers (4 days @ \$200.)	
L.Jimenez (4 days @ \$150.)	
GSM-19 rental (\$100./day)	
amount claimed =	\$ 2000.
4*4 truck . (4 days @ \$50./day)	\$ 200.
office plotting and computer time (2½ days @ \$150./day)	\$ 375.
field expenses (flagging, thread)	\$ 50.
meals	\$ 125.
Total Expenses =	<hr/> \$ 2750.

-certified correct,



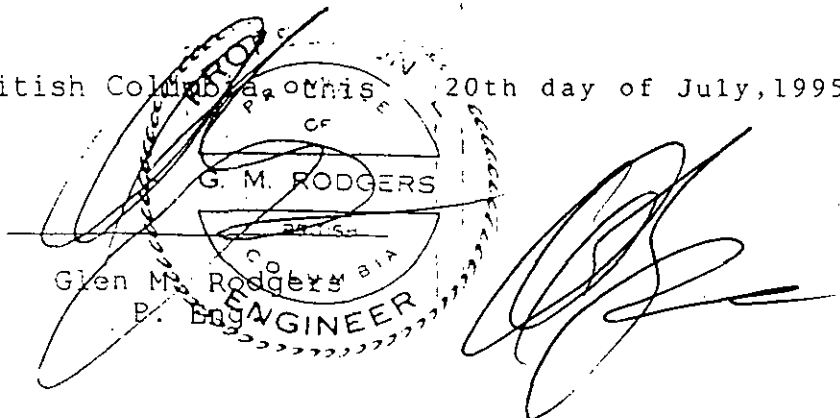
(Glen M. Rodgers, P.Eng.)

STATEMENT OF QUALIFICATIONS

I, Glen M. Rodgers of Skookumchuk, B.C., hereby certify as follows:

1. I am a consulting Geological Engineer presently registered with the Association of Professional Engineers and Geoscientists of British Columbia.
2. I graduated from the University of Manitoba in 1977 with a bachelor's degree in Geological Engineering.
3. Since graduation, I have practised my profession continuously in Western Canada, Yukon Territory, Alaska and Central America, working primarily in the field of mineral exploration.
4. I am a principal of Kootenay Geo-Services, a proprietorship registered in Victoria, B.C. The office and records of Kootenay Geo-Services are located on Sheep Creek Road, P.O. Box 63, Skookumchuk, B.C., V0B 2E0.
5. I have been familiar with Aldridge Formation sediments and Sullivan-style mineralization since 1973. I have worked sporadically over the last 3 years for Kokanee Explorations Ltd. and then for Consolidated Ramrod Gold Corporation. I have worked on both the Vine and Fors properties in varying capacities. I have examined core logs, cross-sections and some drill core from each property.

Dated at Cranbrook, British Columbia, on this 20th day of July, 1995



The seal is circular with a double border. The outer border contains the text "ASSOCIATION OF PROFESSIONAL ENGINEERS AND GEOSCIENTISTS OF BRITISH COLUMBIA" at the top and "P. ENG." at the bottom. The inner border contains "CF" at the top and "CO." at the bottom. The center of the seal contains the name "G. M. RODGERS" and "Glen M. Rodgers" below it, with "P. ENGINEER" at the bottom. A large, stylized signature is written over the seal.

Appendix 1
RAW DATA

FRAN-RAW DATA

LINE NUMBER	STATION NUMBER	MAGNETIC FIELD (nT)	SLOPE (NOT USED)	VLF STATION USED IN PROFILES (ANNAPOLIS)	IN-PHASE (VERTICAL) %	OUT-OF-PHASE (VERTICAL) %	X (HORIZ. AMPLITUDE)	Y (HORIZ. AMPLITUDE)	VLF TOTAL FIELD STRENGTH (PT)	SECOND VLF STATION (NOT USED IN CALCULATIONS)		
1700N	0000970	E	57265.98	000 N	21.4	-017.0	+005.5	005	050	001.8	23.4	-010.
1700N	0000980	E	57265.37	000 N	21.4	-013.0	+006.1	028	038	001.7	23.4	-011.
1700N	0000990	E	57269.28	000 N	21.4	-016.6	+007.0	011	092	001.6	23.4	-011.
1700N	0001000	E	57275.28	000 N	21.4	-018.0	+004.8	006	099	001.7	23.4	-009.
1700N	0001010	E	57270.44	000 N	21.4	-018.9	+006.1	032	086	001.6	23.4	-011.
1700N	0001020	E	57278.64	000 N	21.4	-018.1	+004.2	-009	093	001.6	23.4	-009.
1700N	0001030	E	57287.63	000 N	21.4	-019.2	+004.1	013	097	001.7	23.4	-015.
1700N	0001040	E	57289.54	000 N	21.4	-020.7	+004.2	001	103	001.8	23.4	-011.
1700N	0001050	E	57288.99	000 N	21.4	-020.2	+006.1	-031	099	001.8	23.4	-010.
1700N	0001060	E	57292.60	000 N	21.4	-015.1	+008.7	038	101	001.9	23.4	-009.
1700N	0001070	E	57283.91	000 N	21.4	-017.3	+010.3	050	085	001.7	23.4	-008.
1700N	0001080	E	57286.58	000 N	21.4	-006.7	+015.4	-012	107	001.9	23.4	-009.
1700N	0001090	E	57290.39	000 N	21.4	-007.2	+016.6	-017	103	001.8	23.4	-008.
1700N	0001100	E	57291.59	000 N	21.4	-008.5	+015.6	041	099	001.9	23.4	-004.
1700N	0001110	E	57293.13	000 N	21.4	-006.1	+014.7	028	105	001.9	23.4	-005.
1700N	0001120	E	57292.15	000 N	21.4	-007.7	+013.3	048	096	001.9	23.4	-002.
1700N	0001130	E	57294.32	000 N	21.4	-004.0	+013.3	-025	099	001.8	23.4	-005.
1700N	0001140	E	57290.03	000 N	21.4	-006.7	+014.0	-036	097	001.8	23.4	-001.

F2=ADDLN F3=SAVE F4=FILE ALT-{ B=BLOCK L=BLINE K=BCOPY M=BMOVE G=BDEL D=DEL }

c:francopy.raw line=20 column=10 size=812 memory=353K

1700N	0001140	E	57290.03	000 N	21.4	-006.7	+014.0	-036	097	001.8	23.4	-001.
1700N	0001150	E	57290.26	000 N	21.4	-006.0	+015.3	028	104	001.9	23.4	-003.
1700N	0001160	E	57290.57	000 N	21.4	-005.1	+014.5	042	096	001.8	23.4	-002.
1700N	0001170	E	57288.92	000 N	21.4	-005.5	+011.5	031	103	001.9	23.4	-001.
1700N	0001180	E	57286.31	000 N	21.4	-008.0	+013.7	026	093	001.7	23.4	-006.
1700N	0001190	E	57287.42	000 N	21.4	-004.4	+009.1	034	097	001.8	23.4	-003.
1700N	0001200	E	57286.74	000 N	21.4	-004.8	+010.5	-004	106	001.8	23.4	-006.
1700N	0001210	E	57289.64	000 N	21.4	-008.3	+011.0	-016	090	001.6	23.4	-006.
1700N	0001220	E	57295.55	000 N	21.4	-005.6	+006.2	054	085	001.8	23.4	+007.
1700N	0001230	E	57295.05	000 N	21.4	-004.2	+007.6	-008	099	001.7	23.4	-007.

```

1700N 0001250 E 57305.67 000 N 21.4 -001.7 +008.6 033 092 001.7 23.4 -006.
1700N 0001260 E 57289.49 000 N 21.4 +000.3 +008.7 016 099 001.7 23.4 -007.
1700N 0001270 E 57279.31 000 N 21.4 +000.1 +011.2 056 077 001.7 23.4 -008.
1700N 0001280 E 57279.50 000 N 21.4 +002.6 +011.3 028 096 001.8 23.4 -009.
1700N 0001290 E 57279.41 000 N 21.4 +002.1 +012.2 024 096 001.7 23.4 -007.
1700N 0001300 E 57278.67 000 N 21.4 +003.2 +012.9 029 092 001.7 23.4 -001.
1700N 0001310 E 57278.09 000 N 21.4 +005.5 +011.2 036 088 001.7 23.4 -002.
1700N 0001320 E 57273.30 000 N 21.4 +006.3 +012.0 007 090 001.6 23.4 -002.
1700N 0001330 E 57272.67 000 N 21.4 +008.4 +009.8 036 083 001.6 23.4 +002.
1700N 0001340 E 57272.77 000 N 21.4 +012.4 +008.6 030 089 001.6 23.4 +003.

```

```

====>
F2=ADDLN F3=SAVE F4=FILE ALT-| B=BLOCK L=BLINE K=BCOPY M=BMOVE G=BDEL D=DEL |

```

```

c:francopy.raw line=40 column=10 size=812 memory=353K

```

```

1700N 0001340 E 57272.77 000 N 21.4 +012.4 +008.6 030 089 001.6 23.4 +003.
1700N 0001350 E 57271.14 000 N 21.4 +013.3 +006.7 020 086 001.5 23.4 +001.
1700N 0001360 E 57272.70 000 N 21.4 +011.7 +008.4 000 088 001.5 23.4 +002.
1700N 0001370 E 57281.59 000 N 21.4 +011.3 +005.7 023 085 001.5 23.4 +002.
1700N 0001380 E 57280.34 000 N 21.4 +012.0 +001.5 000 086 001.5 23.4 +004.
1700N 0001390 E 57279.02 000 N 21.4 +010.3 +001.8 -030 084 001.6 23.4 +005.
1700N 0001400 E 57281.19 000 N 21.4 +008.5 -000.1 035 082 001.6 23.4 +007.
1700N 0001410 E 57286.01 000 N 21.4 +007.7 -003.8 012 085 001.5 23.4 +005.
1700N 0001420 E 57282.49 000 N 21.4 +006.4 -001.0 002 088 001.5 23.4 +002.
1700N 0001430 E 57281.00 000 N 21.4 +006.3 -002.7 009 085 001.5 23.4 +002.
1700N 0001440 E 57275.91 000 N 21.4 +005.9 -002.9 006 093 001.6 23.4 +002.
1700N 0001450 E 57281.52 000 N 21.4 +004.9 -004.0 032 082 001.5 23.4 +010.
1700N 0001460 E 57286.21 000 N 21.4 +006.4 -003.7 000 086 001.5 23.4 +005.
1700N 0001470 E 57283.09 000 N 21.4 +005.3 -000.4 018 080 001.4 23.4 +007.
1700N 0001480 E 57282.46 000 N 21.4 +004.9 -000.5 047 075 001.5 23.4 +012.
1700N 0001490 E 57287.08 000 N 21.4 +005.4 -000.7 000 093 001.6 23.4 +003.
1700N 0001500 E 57286.72 000 N 21.4 +005.6 +004.2 -026 093 001.7 23.4 +009.
1700N 0001510 E 57288.64 000 N 21.4 +006.9 +003.0 023 088 001.6 23.4 +010.
1700N 0001520 E 57286.57 000 N 21.4 +013.6 +006.5 -027 083 001.5 23.4 +010.
1700N 0001530 E 57287.37 000 N 21.4 +010.5 +006.8 011 090 001.6 23.4 +011.
1700N 0001540 E 57287.40 000 N 21.4 +009.9 +008.7 -015 092 001.6 23.4 +014.

```

```

====>
F2=ADDLN F3=SAVE F4=FILE ALT-| B=BLOCK L=BLINE K=BCOPY M=BMOVE G=BDEL D=DEL |

```

```

c:francopy.raw line=60 column=10 size=812 memory=353K

```

```

1700N 0001540 E 57287.40 000 N 21.4 +009.9 +008.7 -015 092 001.6 23.4 +014.
1700N 0001550 E 57284.95 000 N 21.4 +012.0 +009.5 042 078 001.5 23.4 +017.
1700N 0001560 E 57285.15 000 N 21.4 +014.3 +012.3 003 087 001.5 23.4 +014.
1700N 0001570 E 57287.40 000 N 21.4 +013.9 +012.0 010 086 001.5 23.4 +015.
1700N 0001580 E 57280.46 000 N 21.4 +016.3 +015.2 000 086 001.5 23.4 +015.
1700N 0001590 E 57302.08 000 N 21.4 +012.6 +005.9 -025 089 001.6 23.4 +011.
1700N 0001600 E 57307.02 000 N 21.4 +010.8 +005.5 -018 103 001.8 23.4 +011.
1700N 0001610 E 57305.58 000 N 21.4 +009.7 +003.9 004 103 001.8 23.4 +011.
1700N 0001620 E 57305.20 000 N 21.4 +009.0 +004.2 003 112 002.0 23.4 +011.
1700N 0001630 E 57302.94 000 N 21.4 +012.9 +005.7 -012 102 001.8 23.4 +012.
1700N 0001640 E 57301.73 000 N 21.4 +011.6 +006.4 -019 102 001.8 23.4 +014.
1700N 0001650 E 57299.92 000 N 21.4 +012.0 +004.9 018 103 001.8 23.4 +012.
1700N 0001660 E 57298.45 000 N 21.4 +011.7 +005.6 037 103 001.9 23.4 +014.
1700N 0001670 E 57298.66 000 N 21.4 +011.9 +006.7 040 095 001.8 23.4 +015.
1700N 0001680 E 57302.90 000 N 21.4 +013.6 +007.3 039 091 001.7 23.4 +017.
1700N 0001690 E 57304.95 000 N 21.4 +015.0 +006.2 030 096 001.8 23.4 +018.
1700N 0001700 E 57302.76 000 N 21.4 +012.8 +006.4 053 090 001.8 23.4 +014.
1700N 0001710 E 57305.84 000 N 21.4 +018.0 +004.7 012 098 001.7 23.4 +017.
1700N 0001720 E 57303.63 000 N 21.4 +018.3 +006.5 032 098 001.8 23.4 +018.
1700N 0001730 E 57307.43 000 N 21.4 +016.8 +005.1 045 088 001.7 23.4 +021.
1700N 0001740 E 57304.42 000 N 21.4 +018.8 +007.0 042 090 001.7 23.4 +023.

```

```

====>
F2=ADDLN F3=SAVE F4=FILE ALT-| B=BLOCK L=BLINE K=BCOPY M=BMOVE G=BDEL D=DEL |

```

1700N	0001740	E	57304.42	000	N	21.4	+018.8	+007.0	042	090	001.7	23.4	+023.
1700N	0001750	E	57302.72	000	N	21.4	+020.7	+005.2	-008	094	001.6	23.4	+018.
1700N	0001760	E	57306.18	000	N	21.4	+016.8	+003.6	-007	099	001.7	23.4	+017.
1700N	0001770	E	57300.03	000	N	21.4	+018.4	+005.5	017	095	001.7	23.4	+016.
1700N	0001780	E	57308.20	000	N	21.4	+017.7	+005.8	038	089	001.7	23.4	+019.
1700N	0001790	E	57307.17	000	N	21.4	+016.1	+005.4	034	091	001.7	23.4	+017.
1700N	0001800	E	57313.06	000	N	21.4	+015.5	+005.6	007	096	001.7	23.4	+017.
1700N	0001810	E	57310.47	000	N	21.4	+014.2	+003.7	007	093	001.6	23.4	+014.
1700N	0001820	E	57311.42	000	N	21.4	+015.7	+004.6	014	091	001.6	23.4	+013.
1700N	0001830	E	57311.53	000	N	21.4	+011.7	+005.1	022	086	001.5	23.4	+012.
1700N	0001840	E	57311.33	000	N	21.4	+011.6	+004.4	030	088	001.6	23.4	+009.
1700N	0001850	E	57311.01	000	N	21.4	+008.9	+004.7	030	091	001.7	23.4	+008.
1700N	0001860	E	57313.44	000	N	21.4	+006.7	+004.9	033	079	001.5	23.4	+003.
1700N	0001870	E	57314.16	000	N	21.4	+005.7	+004.5	049	077	001.6	23.4	+010.
1700N	0001880	E	57314.71	000	N	21.4	+003.5	+004.5	013	084	001.5	23.4	-000.
1700N	0001890	E	57314.93	000	N	21.4	-000.2	+001.9	008	084	001.5	23.4	-006.
1700N	0001900	E	57316.93	000	N	21.4	-002.7	+001.9	023	080	001.4	23.4	-010.
1700N	0001910	E	57319.21	000	N	21.4	-004.5	-000.7	003	084	001.5	23.4	-010.
1700N	0001920	E	57317.57	000	N	21.4	-006.8	-001.9	008	080	001.4	23.4	-010.
1700N	0001930	E	57316.05	000	N	21.4	-009.9	-004.2	007	074	001.3	23.4	-012.
1700N	0001940	E	57314.62	000	N	21.4	-009.3	-004.4	042	065	001.3	23.4	-011.

====>

F2=ADDLN F3=SAVE F4=FILE ALT-4 B=BLOCK L=BLINE K=BCOPY M=BMOVE G=BDEL D=DEL }

c:francopy.raw line=100 column=10 size=812 memory=353K

1700N	0001940	E	57314.62	000	N	21.4	-009.3	-004.4	042	065	001.3	23.4	-011.
1700N	0001950	E	57317.79	000	N	21.4	-013.1	-007.1	-003	077	001.3	23.4	-018.
1700N	0001960	E	57314.96	000	N	21.4	-015.0	-008.7	001	079	001.4	23.4	-021.
1700N	0001970	E	57307.96	000	N	21.4	-015.4	-008.1	-021	073	001.3	23.4	-024.
1700N	0001980	E	57305.15	000	N	21.4	-017.8	-009.5	035	068	001.3	23.4	-025.
1700N	0001990	E	57303.25	000	N	21.4	-019.7	-011.6	-022	070	001.3	23.4	-026.
1700N	0002000	E	57305.14	000	N	21.4	-020.1	-011.3	-036	068	001.3	23.4	-024.
1550N	0002000	E	57294.95	000	N	21.4	+005.0	-005.5	008	075	001.3	23.4	+021.
1550N	0001990	E	57288.75	000	N	21.4	+003.2	-002.8	014	076	001.3	23.4	+020.
1550N	0001980	E	57292.99	000	N	21.4	+005.7	-004.6	027	071	001.3	23.4	+018.
1550N	0001970	E	57289.73	000	N	21.4	+003.8	-002.8	022	073	001.3	23.4	+018.
1550N	0001960	E	57298.22	000	N	21.4	+006.5	-002.4	037	066	001.3	23.4	+021.
1550N	0001950	E	57296.77	000	N	21.4	+004.7	-004.5	065	041	001.3	23.4	+014.
1550N	0001940	E	57297.74	000	N	21.4	+001.2	-005.5	047	062	001.3	23.4	-031.
1550N	0001930	E	57303.09	000	N	21.4	+002.0	-004.2	017	079	001.4	23.4	+023.
1550N	0001920	E	57302.07	000	N	21.4	+000.0	-006.4	036	079	001.5	23.4	+022.
1550N	0001910	E	57304.31	000	N	21.4	+001.3	-004.6	037	080	001.5	23.4	+019.
1550N	0001900	E	57309.92	000	N	21.4	-001.9	-002.7	006	084	001.5	23.4	+013.
1550N	0001890	E	57308.87	000	N	21.4	-000.4	-001.1	053	067	001.5	23.4	-004.
1550N	0001880	E	57305.87	000	N	21.4	+004.9	+007.4	-003	051	000.9	23.4	+007.
1550N	0001870	E	57303.44	000	N	21.4	-002.6	-001.9	-041	080	001.6	23.4	+004.

====>

F2=ADDLN F3=SAVE F4=FILE ALT-4 B=BLOCK L=BLINE K=BCOPY M=BMOVE G=BDEL D=DEL }

c:francopy.raw line=120 column=10 size=812 memory=353K

1550N	0001870	E	57303.44	000	N	21.4	-002.6	-001.9	-041	080	001.6	23.4	+004.
1550N	0001860	E	57305.74	000	N	21.4	-003.4	-000.8	071	049	001.5	23.4	-009.
1550N	0001850	E	57305.95	000	N	21.4	+000.5	-000.9	074	052	001.6	23.4	-025.
1550N	0001840	E	57304.54	000	N	21.4	-002.4	-002.0	046	083	001.6	23.4	-012.
1550N	0001830	E	57307.07	000	N	21.4	-006.1	+000.2	010	093	001.6	23.4	-005.
1550N	0001820	E	57304.87	000	N	21.4	-004.7	+000.8	032	091	001.7	23.4	-006.
1550N	0001810	E	57303.91	000	N	21.4	-001.6	-001.8	042	086	001.7	23.4	-005.
1550N	0001800	E	57306.08	000	N	21.4	-004.0	-000.6	039	091	001.7	23.4	-007.
1550N	0001790	E	57301.62	000	N	21.4	-003.3	-001.5	029	088	001.6	23.4	-003.
1550N	0001780	E	57299.65	000	N	21.4	-004.0	+000.1	-020	098	001.7	23.4	-005.
1550N	0001770	E	57299.92	000	N	21.4	-005.0	+000.6	-001	096	001.7	23.4	-006.
1550N	0001760	E	57301.43	000	N	21.4	-003.1	+000.8	020	099	001.8	23.4	-007.
1550N	0001750	E	57302.95	000	N	21.4	-000.3	+001.0	031	097	001.8	23.4	+006.

```

1550N 0001740 E 57301.85 000 N 21.4 +000.0 +001.3 048 089 001.8 23.4 -009.
1550N 0001730 E 57301.82 000 N 21.4 +003.4 +001.3 065 071 001.7 23.4 -003.
1550N 0001720 E 57303.14 000 N 21.4 +000.6 +003.2 000 103 001.8 23.4 -003.
1550N 0001710 E 57304.78 000 N 21.4 +001.8 +001.0 -045 091 001.8 23.4 -012.
1550N 0001700 E 57303.93 000 N 21.4 +007.4 +004.4 -048 055 001.3 23.4 -006.
1550N 0001690 E 57306.52 000 N 21.4 +002.7 +003.1 004 104 001.8 23.4 -003.
1550N 0001680 E 57306.33 000 N 21.4 +004.9 +005.4 -041 090 001.7 23.4 -003.
1550N 0001670 E 57307.15 000 N 21.4 +005.7 +004.5 008 095 001.7 23.4 -001.

```

====>
F2=ADDLN F3=SAVE F4=FILE ALT-(B=BLOCK L=BLINE K=BCOPY M=BMOVE G=BDEL D=DEL)

c:francopy.raw line=140 column=10 size=812 memory=353K

```

1550N 0001670 E 57307.15 000 N 21.4 +005.7 +004.5 008 095 001.7 23.4 -001.
1550N 0001660 E 57308.32 000 N 21.4 +007.1 +005.4 034 094 001.7 23.4 -005.
1550N 0001650 E 57311.80 000 N 21.4 +010.1 +008.6 -027 095 001.7 23.4 +001.
1550N 0001640 E 57307.39 000 N 21.4 +011.5 +009.2 023 093 001.7 23.4 +004.
1550N 0001630 E 57305.56 000 N 21.4 +013.2 +012.9 -011 096 001.7 23.4 +005.
1550N 0001620 E 57306.18 000 N 21.4 +013.8 +013.4 012 093 001.6 23.4 +003.
1550N 0001610 E 57307.95 000 N 21.4 +013.8 +013.0 055 066 001.5 23.4 +003.
1550N 0001600 E 57303.03 000 N 21.4 +011.8 +013.2 002 088 001.5 23.4 +003.
1550N 0001590 E 57302.88 000 N 21.4 +010.3 +011.6 014 087 001.5 23.4 +001.
1550N 0001580 E 57298.10 000 N 21.4 +007.6 +009.9 023 088 001.6 23.4 -003.
1550N 0001570 E 57302.51 000 N 21.4 +009.6 +009.4 060 061 001.5 23.4 -002.
1550N 0001560 E 57306.42 000 N 21.4 +006.4 +007.4 046 075 001.5 23.4 -008.
1550N 0001550 E 57298.58 000 N 21.4 +002.6 +005.8 039 075 001.5 23.4 -011.
1550N 0001540 E 57293.82 000 N 21.4 +003.9 +007.0 053 061 001.4 23.4 -009.
1550N 0001530 E 57294.30 000 N 21.4 +001.9 +005.1 060 062 001.5 23.4 -007.
1550N 0001520 E 57329.04 000 N 21.4 +002.3 +005.0 028 080 001.5 23.4 -006.
1550N 0001510 E 57293.92 000 N 21.4 -000.6 +005.4 011 078 001.4 23.4 -007.
1550N 0001500 E 57292.92 000 N 21.4 -001.2 +003.1 029 073 001.4 23.4 -007.
1550N 0001490 E 57293.67 000 N 21.4 -001.8 +004.5 025 079 001.4 23.4 -005.
1550N 0001480 E 57293.95 000 N 21.4 -001.7 +002.8 052 064 001.4 23.4 -019.
1550N 0001470 E 57298.28 000 N 21.4 -001.9 +003.8 050 065 001.4 23.4 +000.

```

====>
F2=ADDLN F3=SAVE F4=FILE ALT-(B=BLOCK L=BLINE K=BCOPY M=BMOVE G=BDEL D=DEL)

c:francopy.raw line=160 column=10 size=812 memory=353K

```

1550N 0001470 E 57298.28 000 N 21.4 -001.9 +003.8 050 065 001.4 23.4 +000.
1550N 0001460 E 57277.86 000 N 21.4 -011.1 -003.4 026 076 001.4 23.4 -001.
1550N 0001450 E 57290.74 000 N 21.4 -010.5 -004.9 050 060 001.3 23.4 -012.
1550N 0001440 E 57288.91 000 N 21.4 -010.4 -006.9 052 074 001.6 23.4 -018.
1550N 0001430 E 57295.48 000 N 21.4 -005.3 -009.8 068 055 001.5 23.4 -003.
1550N 0001420 E 57301.03 000 N 21.4 -005.9 -008.3 035 080 001.5 23.4 +001.
1550N 0001410 E 57300.21 000 N 21.4 +002.9 -004.0 -001 052 000.9 23.4 -000.
1550N 0001400 E 57303.70 000 N 21.4 -004.9 -009.7 -014 087 001.5 23.4 -001.
1550N 0001390 E 57301.95 000 N 21.4 -003.5 -013.4 020 081 001.5 23.4 -001.
1550N 0001380 E 57306.03 000 N 21.4 +000.8 -014.2 040 082 001.6 23.4 -004.
1550N 0001370 E 57302.79 000 N 21.4 +005.1 -014.6 065 062 001.6 23.4 -022.
1550N 0001360 E 57304.73 000 N 21.4 +004.8 -013.3 -003 089 001.5 23.4 -001.
1550N 0001350 E 57304.41 000 N 21.4 +007.7 -014.0 -041 076 001.5 23.4 -007.
1550N 0001340 E 57303.70 000 N 21.4 +011.2 -010.7 064 049 001.4 23.4 -015.
1550N 0001330 E 57315.37 000 N 21.4 +012.7 -009.9 040 068 001.4 23.4 -003.
1550N 0001320 E 57313.21 000 N 21.4 +013.6 -009.3 050 070 001.5 23.4 -006.
1550N 0001310 E 57313.85 000 N 21.4 +015.0 -009.9 018 078 001.4 23.4 +005.

```

1550N 0001280 E 57302.86 000 N 21.4 +022.5 -007.3 035 067 001.3 23.4
1550N 0001270 E 57302.58 000 N 21.4 +023.5 -008.0 028 066 001.2 23.4
====>

F2=ADDLN F3=SAVE F4=FILE ALT-I B=BLOCK L=BLINE K=BCOPY M=BMOVE G=BDEL D=D

c:francopy.raw line=180 column=10 size=812 memory=353K

1550N	0001270	E	57302.58	000	N	21.4	+023.5	-008.0	028	066	001.2	23.4
1550N	0001260	E	57302.38	000	N	21.4	+021.0	-008.1	016	071	001.3	23.4
1550N	0001250	E	57308.37	000	N	21.4	+020.4	-009.7	021	065	001.2	23.4
1550N	0001240	E	57308.91	000	N	21.4	+018.5	-012.1	-006	069	001.2	23.4
1550N	0001230	E	57303.10	000	N	21.4	+019.6	-005.6	-027	061	001.2	23.4
1550N	0001220	E	57298.24	000	N	21.4	+021.3	-007.8	020	062	001.1	23.4
1550N	0001210	E	57297.50	000	N	21.4	+022.6	-005.2	046	045	001.1	23.4
1550N	0001200	E	57295.31	000	N	21.4	+017.0	-009.2	047	118	001.1	23.4
1550N	0001190	E	57297.17	000	N	21.4	+015.6	-011.2	022	122	001.1	23.4
1550N	0001180	E	57297.52	000	N	21.4	+014.7	-009.7	036	058	001.2	23.4
1550N	0001170	E	57297.31	000	N	21.4	+019.5	-006.0	035	048	001.0	23.4
1550N	0001160	E	57298.40	000	N	21.4	+014.7	-012.2	000	069	001.2	23.4
1550N	0001150	E	57303.27	000	N	21.4	+017.6	-003.1	047	048	001.2	23.4
1550N	0001140	E	57298.83	000	N	21.4	+015.0	-007.7	021	061	001.1	23.4
1550N	0001130	E	57301.96	000	N	21.4	+014.3	-009.8	017	066	001.2	23.4
1550N	0001120	E	57303.15	000	N	21.4	+015.6	-007.1	037	054	001.1	23.4
1550N	0001110	E	57313.11	000	N	21.4	+014.5	-004.6	028	058	001.1	23.4
1550N	0001100	E	57354.03	000	N	21.4	+012.9	-005.5	024	060	001.1	23.4
1550N	0001090	E	57309.58	000	N	21.4	+012.6	-007.1	016	067	001.2	23.4
1550N	0001080	E	57304.19	000	N	21.4	+016.8	-004.7	035	053	001.1	23.4
1550N	0001070	E	57300.22	000	N	21.4	+016.2	-000.2	037	052	001.1	23.4

====>
F2=ADDLN F3=SAVE F4=FILE ALT-I B=BLOCK L=BLINE K=BCOPY M=BMOVE G=BDEL D=DEL

c:francopy.raw line=200 column=10 size=812 memory=353K

1550N	0001070	E	57300.22	000	N	21.4	+016.2	-000.2	037	052	001.1	23.4
1550N	0001060	E	57299.17	000	N	21.4	+013.2	-005.1	009	065	001.1	23.4
1550N	0001050	E	57307.98	000	N	21.4	+016.0	-002.4	010	059	001.0	23.4
1550N	0001040	E	57306.18	000	N	21.4	+015.5	-004.9	006	068	001.2	23.4
1550N	0001030	E	57298.64	000	N	21.4	+015.5	-003.3	-011	064	001.1	23.4
1550N	0001020	E	57299.79	000	N	21.4	+013.8	-005.9	008	063	001.1	23.4
1550N	0001010	E	57303.33	000	N	21.4	+014.4	-008.5	032	051	001.0	23.4
1550N	0001000	E	57304.18	000	N	21.4	+012.9	-005.4	009	058	001.0	23.4
1600N	0001000	E	57300.72	000	N	21.4	-009.8	+007.0	027	051	001.0	23.4
1600N	0001010	E	57298.35	000	N	21.4	-012.0	+006.6	021	056	001.0	23.4
1600N	0001020	E	57300.85	000	N	21.4	-012.1	+006.5	028	050	001.0	23.4
1600N	0001030	E	57305.24	000	N	21.4	-015.5	+007.6	010	059	001.0	23.4
1600N	0001040	E	57297.25	000	N	21.4	-013.4	+008.5	028	050	001.0	23.4
1600N	0001050	E	57303.92	000	N	21.4	-014.0	+007.4	011	058	001.0	23.4
1600N	0001060	E	57303.32	000	N	21.4	-011.0	+006.4	036	043	001.0	23.4
1600N	0001070	E	57302.98	000	N	21.4	-015.0	+010.1	037	106	001.0	23.4
1600N	0001080	E	57305.18	000	N	21.4	-014.8	+007.4	010	115	001.0	23.4
1600N	0001090	E	57313.65	000	N	21.4	-013.6	+008.6	022	112	001.0	23.4
1600N	0001100	E	57318.41	000	N	21.4	-014.6	+004.5	017	111	001.0	23.4
1600N	0001110	E	57325.08	000	N	21.4	-021.0	+005.3	-024	106	000.9	23.4
1600N	0001120	E	57304.80	000	N	21.4	-021.5	+005.6	-008	109	000.9	23.4

====>
F2=ADDLN F3=SAVE F4=FILE ALT-I B=BLOCK L=BLINE K=BCOPY M=BMOVE G=BDEL D=DEL

c:francopy.raw line=220 column=10 size=812 memory=353K

1600N	0001120	E	57304.80	000	N	21.4	-021.5	+005.6	-008	109	000.9	23.4
1600N	0001130	E	57304.53	000	N	21.4	-019.6	+009.2	059	100	001.0	23.4
1600N	0001140	E	57305.67	000	N	21.4	-019.7	+006.9	036	108	001.0	23.4
1600N	0001150	E	57300.59	000	N	21.4	-028.5	+005.6	-014	103	000.9	23.4
1600N	0001160	E	57300.29	000	N	21.4	-030.6	+004.4	079	064	000.9	23.4
1600N	0001170	E	57308.74	000	N	21.4	-025.9	+010.5	045	108	001.0	23.4

```

1600N 0001180 E 57307.01 000 N 21.4 -020.9 +016.5 024 114 001.0 23.4 -001.
1600N 0001190 E 57311.33 000 N 21.4 -021.6 +019.0 074 091 001.0 23.4 -006.

1850N 0001030 E 57295.39 57496.54 000 N 21.4 -000.2 +007.1 001 093 001.6
1850N 0001040 E 57304.06 57504.80 000 N 21.4 -001.3 +003.6 011 090 001.6
1850N 0001050 E 57305.81 57506.69 000 N 21.4 +000.0 +004.6 -016 088 001.6
1850N 0001060 E 57308.36 57508.98 000 N 21.4 -002.2 +001.4 -027 086 001.6
1850N 0001070 E 57307.86 57508.20 000 N 21.4 -003.6 +001.2 001 088 001.5
1850N 0001080 E 57309.06 57509.27 000 N 21.4 -003.0 -001.5 005 091 001.6
1850N 0001090 E 57307.99 57507.90 000 N 21.4 -002.4 -001.0 007 094 001.6
1850N 0001100 E 57303.10 57502.70 000 N 21.4 -004.2 -004.2 -013 086 001.5
1850N 0001110 E 57305.25 57504.63 000 N 21.4 -006.1 -005.0 -029 080 001.5
1850N 0001120 E 57306.55 57505.96 000 N 21.4 -005.4 -006.4 036 079 001.5
1850N 0001130 E 57307.07 57506.44 000 N 21.4 -008.1 -006.4 042 078 001.5
1850N 0001140 E 57313.65 57513.03 000 N 21.4 -006.1 -006.0 037 071 001.4
====>

```

F2=ADDLN F3=SAVE F4=FILE ALT-| B=BLOCK L=BLINE K=BCOPY M=BMOVE G=BDEL D=DEL }

```

c:francopy.raw line=240 column=10 size=812 memory=353K

1850N 0001140 E 57313.65 57513.03 000 N 21.4 -006.1 -006.0 037 071 001.4
1850N 0001150 E 57308.25 57507.45 000 N 21.4 -007.5 -000.5 037 069 001.4
1850N 0001160 E 57301.03 57499.66 000 N 21.4 -005.3 -001.4 019 083 001.5
1850N 0001170 E 57301.37 57499.70 000 N 21.4 -006.2 +000.0 020 078 001.4
1850N 0001180 E 57290.88 57489.11 000 N 21.4 -006.4 -000.1 028 071 001.3
1850N 0001190 E 57294.90 57493.09 000 N 21.4 -007.2 -002.0 015 074 001.3
1850N 0001200 E 57295.84 57493.40 000 N 21.4 -008.1 -000.3 011 075 001.3
1850N 0001210 E 57293.44 57491.31 000 N 21.4 -006.9 -001.8 030 072 001.4
1850N 0001220 E 57293.38 57491.34 000 N 21.4 -004.9 -003.1 -007 078 001.3
1850N 0001230 E 57292.97 57490.94 000 N 21.4 -005.5 -003.3 010 074 001.3
1850N 0001240 E 57292.23 57490.36 000 N 21.4 -004.8 -003.7 -033 068 001.3
1850N 0001250 E 57296.95 57493.86 000 N 21.4 -005.1 -002.5 010 070 001.2
1850N 0001260 E 57294.44 57491.18 000 N 21.4 -004.7 -001.9 039 064 001.3
1850N 0001270 E 57292.65 57489.85 000 N 21.4 -003.9 -002.4 013 069 001.2
1850N 0001280 E 57295.16 57492.67 000 N 21.4 -005.5 -002.9 012 071 001.2
1850N 0001290 E 57294.30 57492.24 000 N 21.4 -006.1 -003.7 028 068 001.3
1850N 0001300 E 57292.01 57490.57 000 N 21.4 -007.5 -004.5 039 059 001.2
1850N 0001310 E 57297.57 57496.51 000 N 21.4 -008.0 -004.8 036 062 001.2
1850N 0001320 E 57290.82 57488.88 000 N 21.4 -008.9 -006.3 045 053 001.2
1850N 0001330 E 57296.54 57494.13 000 N 21.4 -010.0 -006.6 038 054 001.1
1850N 0001340 E 57293.16 57490.78 000 N 21.4 -009.0 -006.7 032 062 001.2
====>

```

F2=ADDLN F3=SAVE F4=FILE ALT-| B=BLOCK L=BLINE K=BCOPY M=BMOVE G=BDEL D=DEL }

```

c:francopy.raw line=260 column=10 size=812 memory=353K

1850N 0001340 E 57293.16 57490.78 000 N 21.4 -009.0 -006.7 032 062 001.2
1850N 0001350 E 57295.03 57492.38 000 N 21.4 -008.9 -005.2 016 071 001.3
1850N 0001360 E 57295.98 57493.35 000 N 21.4 -007.0 -006.1 027 064 001.2
1850N 0001370 E 57296.16 57493.13 000 N 21.4 -004.8 -004.5 -002 069 001.2
1850N 0001380 E 57295.53 57492.28 000 N 21.4 -005.2 -005.8 008 068 001.2
1850N 0001390 E 57297.49 57493.63 000 N 21.4 -006.3 -003.3 016 068 001.2
1850N 0001400 E 57297.10 57493.35 000 N 21.4 -007.4 -003.2 -032 058 001.1
1800N 0001500 E 57295.76 57488.40 000 N 21.4 -003.9 -003.8 016 065 001.1
1800N 0001510 E 57295.25 57488.13 000 N 21.4 -003.3 -002.0 016 069 001.2
1800N 0001520 E 57299.44 57492.29 000 N 21.4 -004.3 -003.3 005 070 001.2
1800N 0001530 E 57304.20 57495.91 000 N 21.4 -006.1 -006.5 -014 066 001.2
1800N 0001540 E 57306.29 57499.80 000 N 21.4 -005.6 -004.5 -003 070 001.2
1800N 0001550 E 57303.18 57500.91 000 N 21.4 -003.5 -005.6 005 068 001.2
1800N 0001560 E 57302.60 57499.72 000 N 21.4 -005.2 -004.9 002 069 001.2
1800N 0001570 E 57309.14 57504.56 000 N 21.4 -005.3 -005.0 012 066 001.1
1800N 0001580 E 57305.97 57500.61 000 N 21.4 -004.3 -005.0 011 068 001.2
1800N 0001590 E 57307.58 57500.87 000 N 21.4 -004.0 -005.3 -001 068 001.2
1800N 0001600 E 57307.05 57500.71 000 N 21.4 -005.0 -005.4 -019 065 001.2
1800N 0001610 E 57307.56 57501.15 000 N 21.4 -002.5 -004.5 -004 067 001.2
1800N 0001620 E 57309.73 57504.66 000 N 21.4 -004.0 -004.0 000 067 001.2

```

1800N 0001630 E 57308.04 57501.10 000 N 21.4 -002.6 -004.0 000 071 001.2
====>

F2=ADDLN F3=SAVE F4=FILE ALT-| B=BLOCK L=BLINE K=BCOPY M=BMOVE G=BDEL D=DEL }

c:francopy.raw line=280 column=10 size=812 memory=353K

1800N	0001630	E	57308.04	57501.10	000	N	21.4	-002.6	-004.0	000	071	001.2
1800N	0001640	E	57312.73	57506.39	000	N	21.4	-005.2	-005.9	-036	057	001.2
1800N	0001650	E	57308.03	57501.69	000	N	21.4	-004.6	-005.0	028	059	001.1
1800N	0001660	E	57309.10	57503.86	000	N	21.4	-004.0	-004.7	035	058	001.2
1800N	0001670	E	57308.16	57503.37	000	N	21.4	-003.8	-005.9	007	067	001.2
1800N	0001680	E	57307.82	57502.90	000	N	21.4	-003.4	-005.6	036	055	001.1
1800N	0001690	E	57307.42	57502.35	000	N	21.4	-004.6	-006.5	024	065	001.2
1800N	0001700	E	57310.84	57505.12	000	N	21.4	-005.6	-008.3	021	067	001.2
1800N	0001710	E	57310.71	57504.68	000	N	21.4	-006.2	-007.2	015	068	001.2
1800N	0001720	E	57307.85	57501.42	000	N	21.4	-004.4	-007.5	011	070	001.2
1800N	0001730	E	57316.31	57509.01	000	N	21.4	-005.7	-010.3	006	070	001.2
1800N	0001740	E	57319.57	57512.44	000	N	21.4	-006.2	-010.3	007	072	001.3
1800N	0001750	E	57325.43	57519.21	000	N	21.4	-007.7	-012.7	039	060	001.2
1800N	0001760	E	57330.20	57523.71	000	N	21.4	-009.1	-012.7	016	070	001.2
1800N	0001770	E	57325.34	57517.99	000	N	21.4	-009.9	-018.6	021	061	001.1
1800N	0001780	E	57320.47	57512.67	000	N	21.4	-010.2	-014.1	021	069	001.2
1800N	0001790	E	57313.41	57505.93	000	N	21.4	-010.2	-014.5	014	070	001.2
1800N	0001800	E	57311.28	57503.61	000	N	21.4	-010.7	-014.5	008	071	001.2
1800N	0001810	E	57320.86	57512.96	000	N	21.4	-009.8	-014.5	014	074	001.3
1800N	0001820	E	57323.18	57514.44	000	N	21.4	-006.7	-012.2	029	068	001.3
1800N	0001830	E	57320.40	57511.36	000	N	21.4	-007.1	-011.2	032	065	001.3

====>
F2=ADDLN F3=SAVE F4=FILE ALT-| B=BLOCK L=BLINE K=BCOPY M=BMOVE G=BDEL D=DEL }

c:francopy.raw line=300 column=10 size=812 memory=353K

1800N	0001830	E	57320.40	57511.36	000	N	21.4	-007.1	-011.2	032	065	001.3
1800N	0001840	E	57318.49	57509.50	000	N	21.4	-006.7	-010.0	038	059	001.2
1800N	0001850	E	57313.74	57504.96	000	N	21.4	-005.2	-007.5	046	056	001.3
1800N	0001860	E	57303.56	57494.93	000	N	21.4	-004.0	-008.8	024	070	001.2
1800N	0001870	E	57304.03	57494.84	000	N	21.4	-004.3	-008.4	015	074	001.3
1800N	0001880	E	57300.32	57490.08	000	N	21.4	-004.0	-008.3	041	058	001.2
1800N	0001890	E	57298.59	57487.93	000	N	21.4	-003.8	-008.3	030	070	001.3
1800N	0001900	E	57299.05	57488.79	000	N	21.4	-001.4	-007.2	019	068	001.2
1800N	0001910	E	57298.29	57488.18	000	N	21.4	-001.9	-007.7	001	073	001.3
1800N	0001920	E	57301.38	57491.27	000	N	21.4	-000.4	-006.7	012	072	001.2
1800N	0001930	E	57301.89	57492.17	000	N	21.4	-001.0	-006.5	008	070	001.2
1800N	0001940	E	57304.47	57494.69	000	N	21.4	-003.1	-008.6	-007	074	001.2
1800N	0001950	E	57305.35	57495.15	000	N	21.4	-005.0	-007.2	007	072	001.3
1800N	0001960	E	57304.36	57494.55	000	N	21.4	-004.5	-007.2	002	075	001.2
1800N	0001970	E	57307.78	57497.76	000	N	21.4	-004.7	-010.2	-006	073	001.3
1800N	0001980	E	57316.37	57506.34	000	N	21.4	-006.5	-009.4	000	068	001.2
1800N	0001990	E	57319.27	57509.14	000	N	21.4	-007.5	-010.3	-014	071	001.3
1800N	0002000	E	57323.06	57512.85	000	N	21.4	-008.1	-008.6	033	067	001.3
1750N	0002000	E	57324.07	57513.34	000	N	21.4	+011.3	+007.3	-006	069	001.2
1750N	0001990	E	57318.54	57508.15	000	N	21.4	+006.5	+009.7	002	075	001.3
1750N	0001980	E	57313.81	57503.19	000	N	21.4	+005.5	+005.6	-030	064	001.2

====>
F2=ADDLN F3=SAVE F4=FILE ALT-| B=BLOCK L=BLINE K=BCOPY M=BMOVE G=BDEL D=DEL }

c:francopy.raw line=320 column=10 size=812 memory=353K

1750N	0001980	E	57313.81	57503.19	000	N	21.4	+005.5	+005.6	-030	064	001.2
1750N	0001970	E	57305.77	57494.97	000	N	21.4	+004.2	+006.9	009	072	001.2
1750N	0001960	E	57303.68	57492.60	000	N	21.4	+003.7	+005.7	016	070	001.2
1750N	0001950	E	57301.97	57490.51	000	N	21.4	+002.8	+006.3	040	056	001.2
1750N	0001940	E	57296.05	57484.67	000	N	21.4	+003.5	+006.2	028	058	001.1
1750N	0001930	E	57298.84	57487.36	000	N	21.4	+001.7	+005.4	034	059	001.2
1750N	0001920	E	57299.07	57487.68	000	N	21.4	+002.2	+006.4	026	065	001.2
1750N	0001910	E	57297.28	57485.14	000	N	21.4	+001.3	+005.4	026	059	001.2

1750N	0001800	E	57297.89	57486.24	000	N	21.4	+003.5	+007.0	015	070	001.2
1750N	0001890	E	57303.38	57491.30	000	N	21.4	+004.4	+009.0	044	053	001.2
1750N	0001880	E	57302.89	57490.84	000	N	21.4	+005.2	+008.4	022	063	001.2
1750N	0001870	E	57311.98	57499.84	000	N	21.4	+006.0	+008.4	024	065	001.2
1750N	0001860	E	57311.36	57498.56	000	N	21.4	+004.0	+009.8	033	052	001.1
1750N	0001850	E	57312.59	57499.17	000	N	21.4	+007.0	+012.5	036	053	001.1
1750N	0001840	E	57317.44	57503.82	000	N	21.4	+010.3	+019.9	047	029	001.0
1750N	0001830	E	57311.86	57498.92	000	N	21.4	+006.9	+014.4	028	059	001.1
1750N	0001820	E	57310.89	57498.26	000	N	21.4	+006.2	+014.4	026	059	001.1
1750N	0001810	E	57311.01	57498.03	000	N	21.4	+008.1	+014.2	032	050	001.0
1750N	0001800	E	57312.20	57498.57	000	N	21.4	+007.0	+015.0	021	057	001.0
1750N	0001790	E	57312.52	57498.86	000	N	21.4	+008.4	+012.3	023	057	001.1
1750N	0001780	E	57310.31	57496.27	000	N	21.4	+006.2	+011.4	010	059	001.0

====>
F2=ADDLN F3=SAVE F4=FILE ALT-| B=BLOCK L=BLINE K=BCOPY M=BMOVE G=BDEL D=DEL |

c:francopy.raw line=340 column=10 size=812 memory=353K

1750N	0001780	E	57310.31	57496.27	000	N	21.4	+006.2	+011.4	010	059	001.0
1750N	0001770	E	57306.06	57491.89	000	N	21.4	+007.8	+011.2	014	061	001.1
1750N	0001760	E	57308.73	57494.17	000	N	21.4	+007.6	+013.0	004	036	000.6
1750N	0001750	E	57326.86	57512.35	000	N	21.4	+001.6	+007.8	029	113	001.0
1750N	0001740	E	57333.17	57518.46	000	N	21.4	+002.4	+006.0	043	114	001.0
1750N	0001730	E	57317.24	57502.63	000	N	21.4	+002.3	+005.7	-006	117	001.0
1750N	0001720	E	57311.28	57496.55	000	N	21.4	+000.6	+002.3	-059	102	001.0
1750N	0001710	E	57316.71	57501.96	000	N	21.4	+001.7	+003.6	048	100	000.3
1750N	0001700	E	57323.59	57508.44	000	N	21.4	+000.9	+003.3	070	102	001.1
1750N	0001690	E	57321.55	57506.21	000	N	21.4	+005.0	+004.5	082	072	000.9
1750N	0001680	E	57324.56	57508.63	000	N	21.4	-001.1	+005.9	029	108	001.0
1750N	0001670	E	57325.75	57509.51	000	N	21.4	-000.9	+003.9	037	112	001.0
1750N	0001660	E	57319.53	57503.93	000	N	21.4	+002.7	+004.8	044	109	001.0
1750N	0001650	E	57320.26	57504.37	000	N	21.4	+001.0	+005.0	065	096	001.0
1750N	0001640	E	57317.05	57501.12	000	N	21.4	+000.0	+004.5	077	085	001.0
1750N	0001630	E	57316.66	57500.08	000	N	21.4	-000.6	+002.4	033	109	001.0
1750N	0001620	E	57316.23	57501.56	000	N	21.4	+001.4	+003.6	079	088	001.0
1750N	0001610	E	57308.62	57492.31	000	N	21.4	+000.5	+002.3	050	104	001.0
1750N	0001600	E	57310.20	57493.09	000	N	21.4	-001.4	+002.2	026	110	001.0
1750N	0001590	E	57309.28	57491.84	000	N	21.4	-000.7	-000.3	037	109	001.0
1750N	0001580	E	57303.58	57486.53	000	N	21.4	-000.8	+001.7	010	118	001.0

====>
F2=ADDLN F3=SAVE F4=FILE ALT-| B=BLOCK L=BLINE K=BCOPY M=BMOVE G=BDEL D=DEL |

c:francopy.raw line=360 column=10 size=812 memory=353K

1750N	0001580	E	57303.58	57486.53	000	N	21.4	-000.8	+001.7	010	118	001.0
1750N	0001570	E	57301.87	57485.76	000	N	21.4	-003.1	+000.0	043	108	001.0
1750N	0001560	E	57298.30	57481.77	000	N	21.4	+000.1	+001.3	061	102	001.0
1750N	0001550	E	57303.62	57487.75	000	N	21.4	-002.5	+000.1	072	105	001.1
1750N	0001540	E	57300.11	57483.95	000	N	21.4	-003.2	-001.2	051	108	001.0
1750N	0001530	E	57299.47	57483.15	000	N	21.4	-000.3	+002.6	079	094	001.1
1750N	0001520	E	57299.12	57482.76	000	N	21.4	+000.1	+006.2	099	069	001.0
1750N	0001510	E	57299.32	57483.05	000	N	21.4	-000.8	+001.9	056	105	001.0
1750N	0001500	E	57299.07	57482.90	000	N	21.4	+000.9	+001.5	066	103	001.0
1750N	0001490	E	57300.96	57485.35	000	N	21.4	-000.2	+004.6	-102	125	000.7
1750N	0001480	E	57301.12	57485.07	000	N	21.4	+000.9	+004.1	042	102	000.9
1750N	0001470	E	57306.35	57487.69	000	N	21.4	+000.0	+002.1	053	101	001.0
1750N	0001460	E	57301.43	57483.03	000	N	21.4	-001.7	+002.1	045	107	001.0
1750N	0001450	E	57298.72	57482.64	000	N	21.4	-001.6	+000.0	064	096	001.0
1750N	0001440	E	57304.42	57486.61	000	N	21.4	-003.7	+000.0	022	110	001.0
1750N	0001430	E	57250.81	57433.35	000	N	21.4	-003.5	+001.0	026	107	000.9
1750N	0001420	E	57308.14	57491.22	000	N	21.4	-004.9	-000.2	014	104	000.9
1750N	0001410	E	57308.40	57490.84	000	N	21.4	-003.9	-000.3	012	104	000.9
1750N	0001400	E	57305.45	57488.01	000	N	21.4	-004.0	+001.9	007	101	000.9
1750N	0001390	E	57306.74	57489.47	000	N	21.4	-003.4	+000.9	-019	095	000.8
1750N	0001380	E	57305.20	57488.19	000	N	21.4	-002.3	-001.6	045	088	000.8

c:francopy.raw line=380 column=10 size=812 memory=353K

1750N	0001360	E	57305.20	57486.19	000	N	21.4	-002.8	-001.6	045	088	000.8
1750N	0001370	E	57304.42	57487.05	000	N	21.4	-001.7	+000.5	-020	098	000.8
1750N	0001360	E	57307.14	57489.37	000	N	21.4	-000.9	+000.3	012	096	000.8
1750N	0001350	E	57306.34	57487.61	000	N	21.4	-002.5	-002.4	041	089	000.8
1750N	0001340	E	57303.01	57484.78	000	N	21.4	-002.4	-001.0	008	089	000.8
1750N	0001330	E	57303.02	57485.81	000	N	21.4	-000.1	-003.6	029	088	000.8
1750N	0001320	E	57304.37	57486.31	000	N	21.4	+000.4	-003.5	023	090	000.8
1750N	0001310	E	57301.47	57483.80	000	N	21.4	+000.3	-005.7	018	093	000.8
1750N	0001300	E	57303.73	57485.73	000	N	21.4	+002.6	-004.9	008	093	000.8
1750N	0001290	E	57303.76	57485.65	000	N	21.4	+003.9	-004.2	026	091	000.8
1750N	0001280	E	57308.76	57489.82	000	N	21.4	+002.8	-002.6	008	096	000.8
1750N	0001270	E	57314.02	57495.22	000	N	21.4	+003.4	+000.0	008	079	000.7
1750N	0001260	E	57321.28	57502.11	000	N	21.4	+003.6	-003.0	-015	097	000.8
1750N	0001250	E	57325.39	57505.29	000	N	21.4	+005.1	-000.9	-028	101	000.9
1750N	0001240	E	57322.12	57503.73	000	N	21.4	+003.6	+001.9	022	107	000.9
1750N	0001230	E	57320.37	57501.73	000	N	21.4	+003.8	-003.7	001	111	000.9
1750N	0001220	E	57317.05	57498.61	000	N	21.4	+003.0	-001.2	018	108	000.9
1750N	0001210	E	57313.35	57495.10	000	N	21.4	+003.5	-003.8	031	114	001.0
1750N	0001200	E	57312.22	57494.37	000	N	21.4	+003.4	-004.5	027	106	000.9
1750N	0001190	E	57315.12	57496.88	000	N	21.4	+002.7	-006.1	062	097	001.0
1750N	0001180	E	57316.29	57497.31	000	N	21.4	+002.9	-006.1	049	111	001.0

==>
F2=ADDLN F3=SAVE F4=FILE ALT-F B=BLOCK L=BLINE K=BCOPY M=BMOVE G=BDEL D=DEL I

c:francopy.raw line=400 column=10 size=812 memory=353K

1750N	0001180	E	57316.29	57497.31	000	N	21.4	+002.9	-006.1	049	111	001.0
1750N	0001170	E	57316.43	57497.45	000	N	21.4	+003.1	-007.5	019	118	001.0
1750N	0001160	E	57319.15	57500.56	000	N	21.4	+001.9	-008.7	017	118	001.0
1750N	0001150	E	57319.15	57501.39	000	N	21.4	+003.2	-008.9	049	114	001.1
1750N	0001140	E	57317.88	57500.23	000	N	21.4	+002.1	-010.2	020	119	001.0
1750N	0001130	E	57312.54	57494.75	000	N	21.4	+003.1	-012.7	000	117	001.0
1750N	0001120	E	57324.40	57506.61	000	N	21.4	+003.7	-013.9	-053	112	001.1
1750N	0001110	E	57324.69	57506.55	000	N	21.4	+003.4	-013.7	063	112	001.1
1750N	0001100	E	57316.54	57498.12	000	N	21.4	+002.6	-013.6	044	118	001.1
1750N	0001090	E	57318.43	57499.73	000	N	21.4	+005.3	-012.5	048	122	001.1
1750N	0001080	E	57320.30	57500.87	000	N	21.4	+006.6	-012.0	003	069	001.2
1750N	0001070	E	57314.12	57494.83	000	N	21.4	+008.9	-012.4	027	065	001.2
1750N	0001060	E	57317.71	57498.42	000	N	21.4	+010.6	-010.2	031	065	001.2
1750N	0001050	E	57313.41	57494.42	000	N	21.4	+012.7	-010.7	036	058	001.2
1750N	0001040	E	57309.51	57490.46	000	N	21.4	+011.9	-011.1	004	077	001.3
1750N	0001030	E	57310.29	57492.26	000	N	21.4	+014.2	-009.2	016	077	001.3
1750N	0001020	E	57309.80	57492.08	000	N	21.4	+014.9	-009.6	022	075	001.4
1750N	0001010	E	57313.49	57495.94	000	N	21.4	+014.4	-008.3	012	076	001.3
1750N	0001000	E	57309.54	57491.80	000	N	21.4	+017.7	-006.0	012	072	001.3
1750N	0000990	E	57308.40	57490.47	000	N	21.4	+020.6	-002.0	-013	073	001.3
1750N	0000980	E	57305.52	57487.76	000	N	21.4	+020.2	-002.1	003	077	001.3

==>
F2=ADDLN F3=SAVE F4=FILE ALT-F B=BLOCK L=BLINE K=BCOPY M=BMOVE G=BDEL D=DEL I

c:francopy.raw line=420 column=10 size=812 memory=353K

1750N	0000980	E	57305.52	57487.76	000	N	21.4	+020.2	-002.1	003	077	001.3
1750N	0000970	E	57303.72	57486.11	000	N	21.4	+018.5	-002.9	004	074	001.3
2000N	0002010	E	57273.00	57490.15	000	N	21.4	-000.1	+002.2	086	041	001.7
2000N	0002000	E	57278.14	57490.08	000	N	21.4	+000.0	+002.0	099	032	001.7
2000N	0001990	E	57281.87	57493.88	000	N	21.4	+000.4	+002.5	040	-071	001.4
2000N	0001980	E	57288.57	57500.76	000	N	21.4	-005.2	+002.8	081	-050	001.7
2000N	0001970	E	57285.13	57497.22	000	N	21.4	-003.4	+002.5	071	060	001.6
2000N	0001960	E	57276.50	57488.96	000	N	21.4	-004.6	+001.4	050	080	001.6
2000N	0001950	E	57283.34	57494.80	000	N	21.4	-007.4	+000.4	032	087	001.6

2000N	0001830	E	57292.86	57505.05	000	N	21.4	-009.1	+000.4	036	054	001.3
2000N	0001920	E	57290.92	57502.91	000	N	21.4	-006.2	+002.6	018	069	001.3
2000N	0001919	E	57289.18	57499.18	000	N	21.4	-009.0	+002.6	046	069	001.7
2000N	0001900	E	57280.32	57492.22	000	N	21.4	-007.1	-000.3	044	086	001.7
2000N	0001890	E	57278.59	57490.34	000	N	21.4	-007.8	+002.3	065	064	001.6
2000N	0001880	E	57279.71	57491.51	000	N	21.4	-006.5	+000.8	042	081	001.6
2000N	0001870	E	57266.07	57477.85	000	N	21.4	-004.3	+000.6	032	079	001.5
2000N	0001860	E	57270.43	57482.20	000	N	21.4	-004.3	+008.2	020	039	000.7
2000N	0001850	E	57269.39	57480.10	000	N	21.4	-009.5	+002.0	120	119	001.5
2000N	0001840	E	57271.37	57483.39	000	N	21.4	-005.4	+000.0	043	071	001.4

====>
F2=ADDLN F3=SAVE F4=FILE ALT-{} B=BLOCK L=BLINE K=BCOPY M=BMOVE G=BDEL D=DEL }

c:francopy.raw line=440 column=10 size=812 memory=353K

2000N	0001840	E	57271.37	57483.39	000	N	21.4	-005.4	+000.0	043	071	001.4
2000N	0001830	E	57272.27	57484.42	000	N	21.4	-008.3	+002.1	040	076	001.5
2000N	0001820	E	57267.77	57480.12	000	N	21.4	-007.4	-000.1	063	060	001.5
2000N	0001810	E	57272.58	57485.03	000	N	21.4	-008.4	+001.1	065	063	001.6
2000N	0001800	E	57270.56	57483.09	000	N	21.4	-010.6	-000.5	064	060	001.5
2000N	0001790	E	57275.79	57488.45	000	N	21.4	-010.1	+001.0	052	069	001.5
2000N	0001780	E	57269.75	57482.72	000	N	21.4	-008.1	+001.3	026	072	001.3
2000N	0001770	E	57267.60	57480.49	000	N	21.4	-011.2	+004.2	070	054	001.5
2000N	0001760	E	57270.50	57483.45	000	N	21.4	-007.8	+002.3	040	078	001.5
2000N	0001750	E	57272.02	57485.22	000	N	21.4	-006.1	+004.6	039	074	001.5
2000N	0001740	E	57271.90	57485.26	000	N	21.4	-004.8	+006.5	054	074	001.6
2000N	0001730	E	57273.99	57487.70	000	N	21.4	-006.6	+006.9	034	081	001.5
2000N	0001720	E	57271.80	57485.73	000	N	21.4	-002.8	+007.2	075	056	001.6
2000N	0001710	E	57273.16	57487.02	000	N	21.4	-005.6	+011.4	078	044	001.6
2000N	0001700	E	57277.12	57491.38	000	N	21.4	-002.7	-006.9	030	083	001.5
2000N	0001700	E	57282.83	57497.48	000	N	21.4	-009.5	+010.6	058	092	001.3
2000N	0001690	E	57282.94	57497.64	000	N	21.4	-001.2	+009.9	052	096	001.3
2000N	0001680	E	57289.37	57503.90	000	N	21.4	+003.0	+001.6	024	058	001.1
2000N	0001670	E	57290.40	57505.08	000	N	21.4	-002.1	+004.2	035	039	001.7
2000N	0001660	E	57290.49	57506.00	000	N	21.4	+007.2	-007.6	060	113	001.1
2000N	0001650	E	57289.23	57503.66	000	N	21.4	-002.6	+001.3	096	-127	001.4

====>
F2=ADDLN F3=SAVE F4=FILE ALT-{} B=BLOCK L=BLINE K=BCOPY M=BMOVE G=BDEL D=DEL }

c:francopy.raw line=460 column=10 size=812 memory=353K

2000N	0001650	E	57289.23	57503.66	000	N	21.4	-002.6	+001.3	096	-127	001.4
2000N	0001640	E	57289.97	57505.30	000	N	21.4	-006.8	+002.7	051	090	001.6
2000N	0001630	E	57293.54	57509.09	000	N	21.4	-008.7	+002.8	038	101	001.9
2000N	0001620	E	57292.07	57507.70	000	N	21.4	-010.3	+001.3	044	102	001.9
2000N	0001610	E	57293.80	57509.22	000	N	21.4	-012.4	+000.1	040	107	001.8
2000N	0001600	E	57290.85	57506.12	000	N	21.4	-015.7	+008.9	021	086	001.2
2000N	0001590	E	57296.89	57511.29	000	N	21.4	-015.6	+005.5	030	105	001.9
2000N	0001580	E	57290.09	57509.56	000	N	21.4	-017.9	+000.2	058	102	002.1
2000N	0001570	E	57296.27	57511.98	000	N	21.4	-020.7	+001.5	037	103	001.9
2000N	0001560	E	57297.56	57513.45	000	N	21.4	+013.9	+020.9	021	-081	001.1
2000N	0001550	E	57295.91	57511.94	000	N	21.4	-015.4	+004.2	051	-012	000.9
2000N	0001540	E	57293.15	57509.39	000	N	21.4	+012.8	+019.8	023	-065	001.2
2000N	0001530	E	57295.24	57511.94	000	N	21.4	-023.4	+014.2	017	-058	001.0
2000N	0001520	E	57296.55	57513.35	000	N	21.4	+014.9	+014.3	021	-070	001.3
2000N	0001510	E	57294.38	57511.11	000	N	21.4	-017.8	+003.6	023	-038	001.3
2000N	0001500	E	57293.27	57511.47	000	N	21.4	-016.9	+002.9	024	091	001.6
2000N	0001490	E	57291.27	57509.14	000	N	21.4	-017.4	+003.0	021	086	001.5
2000N	0001480	E	57290.75	57508.42	000	N	21.4	-016.6	+001.2	048	099	001.9
2000N	0001470	E	57289.94	57506.97	000	N	21.4	-017.2	-001.0	049	099	001.9
2000N	0001460	E	57290.37	57507.85	000	N	21.4	-016.6	-000.4	046	100	001.9
2000N	0001450	E	57288.78	57506.29	000	N	21.4	-014.9	+000.0	066	091	002.0

====>
F2=ADDLN F3=SAVE F4=FILE ALT-{} B=BLOCK L=BLINE K=BCOPY M=BMOVE G=BDEL D=DEL }

2000N	0001450	E	57280.76	57506.29	000 N	21.4	-014.9	+000.0	066	001	002.0
2000N	0001440	E	57287.14	57504.52	000 N	21.4	-013.6	+004.9	025	041	000.8
2000N	0001430	E	57285.42	57502.69	000 N	21.4	-013.6	+001.7	084	100	001.1
2000N	0001420	E	57282.63	57499.86	000 N	21.4	-009.1	+003.3	111	125	001.4
2000N	0001410	E	57281.32	57498.69	000 N	21.4	-005.9	-000.4	029	078	001.4
2000N	0001400	E	57281.96	57499.32	000 N	21.4	-005.3	+001.0	042	101	001.9
2000N	0001390	E	57279.76	57497.12	000 N	21.4	-003.4	+001.5	074	082	001.9
2000N	0001380	E	57278.96	57496.37	000 N	21.4	-002.0	+004.5	026	087	001.6
2000N	0001370	E	57276.19	57493.91	000 N	21.4	+000.4	+000.8	028	090	001.6
2000N	0001360	E	57279.31	57497.02	000 N	21.4	-000.1	-012.8	026	-051	001.0
2000N	0001350	E	57277.95	57495.93	000 N	21.4	+004.1	-001.1	044	-125	001.1
2000N	0001340	E	57278.06	57496.07	000 N	21.4	+006.1	-007.1	043	112	001.0
2000N	0001330	E	57278.27	57496.09	000 N	21.4	-001.2	-002.8	084	022	000.7
2000N	0001320	E	57279.19	57496.93	000 N	21.4	+007.6	-005.4	048	120	001.1
2000N	0001310	E	57284.14	57502.01	000 N	21.4	+002.6	-001.3	027	083	001.5
2000N	0001300	E	57280.84	57498.74	000 N	21.4	+002.0	+002.8	069	084	001.9
2000N	0001290	E	57278.86	57496.60	000 N	21.4	+003.5	-002.7	037	085	001.6
2000N	0001280	E	57279.53	57497.10	000 N	21.4	+004.2	-005.9	052	043	001.2
2000N	0001270	E	57280.14	57497.01	000 N	21.4	+004.7	-006.3	026	073	001.3
2000N	0001260	E	57281.48	57498.69	000 N	21.4	+001.8	-002.5	050	092	001.8
2000N	0001250	E	57281.91	57498.76	000 N	21.4	+000.4	-002.3	053	057	001.4

====>
F2=ADDLN F3=SAVE F4=FILE ALT-I B=BLOCK L=BLINE K=BCOPY M=BMOVE G=BDEL D=DEL }

c:francopy.raw line=500 column=10 size=812 memory=353K

2000N	0001250	E	57281.91	57498.76	000 N	21.4	+000.4	-002.3	053	057	001.4
2000N	0001240	E	57279.48	57496.38	000 N	21.4	-000.6	+001.8	045	092	001.8
2000N	0001230	E	57280.33	57497.36	000 N	21.4	-005.4	-003.9	025	-061	001.1
2000N	0001220	E	57277.45	57494.39	000 N	21.4	+000.0	-004.3	036	-089	001.7
2000N	0001210	E	57280.59	57497.44	000 N	21.4	-003.5	+000.8	044	089	001.7
2000N	0001200	E	57281.93	57498.94	000 N	21.4	-001.1	-002.0	045	-067	001.4
2000N	0001190	E	57282.57	57499.51	000 N	21.4	-002.5	-007.2	025	-069	001.3
2000N	0001180	E	57282.47	57499.53	000 N	21.4	-000.2	-003.2	050	082	001.7
2000N	0001170	E	57280.68	57497.83	000 N	21.4	-000.2	-003.6	040	093	001.8
2000N	0001160	E	57282.88	57499.98	000 N	21.4	-001.0	+000.9	069	079	001.8
2000N	0001150	E	57280.89	57497.71	000 N	21.4	-001.9	-003.6	027	088	001.6
2000N	0001140	E	57280.74	57497.55	000 N	21.4	-000.9	-002.7	036	072	001.4
2000N	0001130	E	57281.61	57498.47	000 N	21.4	-002.7	-005.1	047	023	000.9
2000N	0001120	E	57282.00	57498.96	000 N	21.4	+002.4	-006.5	062	125	001.2
2000N	0001110	E	57282.20	57498.94	000 N	21.4	-001.3	-002.0	039	092	001.7
2000N	0001100	E	57279.99	57496.51	000 N	21.4	-003.7	-004.6	044	091	001.8
2000N	0001090	E	57281.39	57497.79	000 N	21.4	-005.7	-003.2	037	091	001.7
2000N	0001080	E	57273.21	57489.52	000 N	21.4	-008.2	-004.3	026	083	001.5
2000N	0001070	E	57246.49	57462.62	000 N	21.4	-010.6	-001.3	020	041	000.8
2000N	0001060	E	57246.27	57462.20	000 N	21.4	-006.5	-007.6	072	119	001.2
2000N	0001050	E	57277.16	57499.11	000 N	21.4	-002.8	-011.4	035	-045	001.0

====>
F2=ADDLN F3=SAVE F4=FILE ALT-I B=BLOCK L=BLINE K=BCOPY M=BMOVE G=BDEL D=DEL }

c:francopy.raw line=520 column=10 size=812 memory=353K

2000N	0001050	E	57277.16	57499.11	000 N	21.4	-002.8	-011.4	035	-045	001.0
2000N	0001040	E	57287.34	57503.43	000 N	21.4	+001.2	+010.1	093	-127	001.2
2000N	0001030	E	57286.11	57501.94	000 N	21.4	-005.2	-003.0	043	095	001.8
2000N	0001020	E	57286.44	57502.38	000 N	21.4	-001.8	-003.9	036	087	001.6
2000N	0001010	E	57285.82	57501.52	000 N	21.4	-000.5	-015.5	022	-059	001.1
2000N	0001000	E	57288.05	57503.90	000 N	21.4	-002.1	-015.2	038	051	001.1
2000N	0000990	E	57286.79	57502.36	000 N	21.4	-000.1	-012.9	045	049	001.2
2000N	0000980	E	57284.76	57500.25	000 N	21.4	+000.0	-019.5	044	027	000.9
2000N	0000970	E	57283.59	57497.85	000 N	21.4	+010.2	-009.2	059	-127	001.2
2000N	0000960	E	57282.81	57497.73	000 N	21.4	-006.1	-024.7	033	-055	001.1
2000N	0000950	E	57286.41	57501.14	000 N	21.4	+007.4	-003.3	052	-064	001.4
2000N	0000940	E	57288.32	57503.02	000 N	21.4	+008.2	-007.4	041	069	001.4
2000N	0000930	E	57288.00	57503.00	000 N	21.4	+008.2	-007.4	041	069	001.4

2000N	0000920	E	57290.11	57504.41	000	N	21.4	+008.5	-009.2	047	-061	001.3
2000N	0000910	E	57289.77	57504.16	000	N	21.4	+010.7	-014.5	043	051	001.2
2000N	0000900	E	57291.09	57505.32	000	N	21.4	-010.2	-037.1	038	-031	000.8
2000N	0000890	E	57289.89	57503.89	000	N	21.4	+013.8	-028.8	052	-081	000.8
2000N	0000880	E	57295.44	57509.91	000	N	21.4	+016.3	-025.3	056	-104	001.8
2000N	0000870	E	57293.92	57507.94	000	N	21.4	-016.5	-031.0	079	-106	001.1
2000N	0000870	E	57291.92	57507.94	000	N	21.4	-016.5	-031.0	079	-106	001.1
2000N	0000860	E	57294.01	57507.71	000	N	21.4	+017.6	-017.0	070	-125	001.2
2000N	0000850	E	57296.42	57510.00	000	N	21.4	+014.1	-027.5	029	054	001.1

====>
F2=ADDLN F3=SAVE F4=FILE ALT-(B=BLOCK L=BLINE K=BCOPY M=BMOVE G=BDEL D=DEL)

c:francopy.raw line=540 column=10 size=812 memory=353K

2000N	0000850	E	57296.42	57510.00	000	N	21.4	+014.1	-027.5	029	054	001.1
2000N	0000840	E	57297.16	57510.39	000	N	21.4	+013.8	-026.5	032	062	001.2
2000N	0000830	E	57295.40	57508.28	000	N	21.4	+009.0	-022.2	035	063	001.2
2000N	0000820	E	57294.73	57507.60	000	N	21.4	-016.3	-023.9	048	-046	001.1
1950N	0000820	E	57294.98	57506.46	000	N	21.4	-003.0	+015.3	052	-067	001.5
1950N	0000830	E	57296.72	57508.30	000	N	21.4	-003.3	+017.2	041	060	001.3
1950N	0000840	E	57284.73	57495.63	000	N	21.4	-002.2	+020.6	036	062	001.2
1950N	0000850	E	57286.98	57497.75	000	N	21.4	-000.4	+020.8	032	063	001.2
1950N	0000860	E	57288.63	57499.35	000	N	21.4	-004.8	+021.5	033	062	001.2
1950N	0000870	E	57293.22	57503.80	000	N	21.4	-005.1	+015.6	031	068	001.3
1950N	0000880	E	57300.25	57510.33	000	N	21.4	-001.6	+000.7	057	080	001.7
1950N	0000890	E	57304.78	57514.33	000	N	21.4	-001.4	+015.6	030	064	001.2
1950N	0000900	E	57302.75	57511.91	000	N	21.4	+000.0	+002.7	052	083	001.7
1950N	0000910	E	57298.70	57508.03	000	N	21.4	-001.9	+005.8	039	081	001.6
1950N	0000920	E	57298.47	57508.01	000	N	21.4	-005.7	+018.5	026	044	000.9
1950N	0000930	E	57295.05	57504.39	000	N	21.4	-005.1	-002.9	100	125	001.4
1950N	0000940	E	57292.27	57501.54	000	N	21.4	+000.9	-004.5	049	088	001.7
1950N	0000950	E	57291.54	57500.90	000	N	21.4	+000.6	-007.7	061	092	001.9
1950N	0000960	E	57293.00	57501.99	000	N	21.4	+001.8	+001.4	032	077	001.4
1950N	0000970	E	57292.01	57501.05	000	N	21.4	+004.6	-008.4	046	089	001.7
1950N	0000980	E	57292.51	57501.42	000	N	21.4	+007.3	-009.7	051	086	001.7

====>
F2=ADDLN F3=SAVE F4=FILE ALT-(B=BLOCK L=BLINE K=BCOPY M=BMOVE G=BDEL D=DEL)

c:francopy.raw line=560 column=10 size=812 memory=353K

1950N	0000980	E	57292.51	57501.42	000	N	21.4	+007.3	-009.7	051	086	001.7
1950N	0000990	E	57297.85	57506.61	000	N	21.4	+006.8	-007.7	044	089	001.7
1950N	0001000	E	57289.96	57498.45	000	N	21.4	+009.9	-009.2	046	084	001.7
1950N	0001010	E	57287.41	57495.78	000	N	21.4	+008.1	-006.4	053	090	001.8
1950N	0001020	E	57290.83	57499.51	000	N	21.4	+007.1	-004.1	026	084	001.5
1950N	0001030	E	57295.69	57504.22	000	N	21.4	+007.0	-004.2	057	083	001.7
1950N	0001040	E	57294.64	57503.01	000	N	21.4	+007.6	-005.2	053	084	001.7
1950N	0001050	E	57293.85	57502.11	000	N	21.4	+005.8	-003.1	066	078	001.8

1950N	0001060	E	57290.33	57498.53	000	N	21.4	+004.4	+001.8	029	079	001.5
1950N	0001070	E	57296.15	57504.27	000	N	21.4	+004.9	-002.0	045	085	001.7
1950N	0001080	E	57293.80	57501.72	000	N	21.4	+003.3	-000.7	030	081	001.5
1950N	0001090	E	57292.32	57500.17	000	N	21.4	+002.3	-002.3	045	084	001.7
1950N	0001100	E	57287.47	57495.63	000	N	21.4	+001.7	-001.5	044	084	001.7
1950N	0001110	E	57287.65	57495.99	000	N	21.4	+001.4	+000.0	044	083	001.6
1950N	0001120	E	57288.84	57496.76	000	N	21.4	+001.4	+001.6	050	080	001.6
1950N	0001130	E	57290.59	57498.22	000	N	21.4	+001.1	+003.2	043	082	001.6
1950N	0001140	E	57291.37	57498.82	000	N	21.4	+003.3	+001.6	041	085	001.7
1950N	0001150	E	57292.70	57500.16	000	N	21.4	+005.8	+007.0	031	044	000.9
1950N	0001160	E	57294.55	57502.14	000	N	21.4	-000.8	+005.7	092	125	001.3
1950N	0001170	E	57296.23	57503.55	000	N	21.4	+006.7	+007.3	031	076	001.4
1950N	0001180	E	57296.51	57503.72	000	N	21.4	+006.6	+008.2	025	074	001.3

====>
F2=ADDLN F3=SAVE F4=FILE ALT-(B=BLOCK L=BLINE K=BCOPY M=BMOVE G=BDEL D=DEL)

c:\francopy.raw line=580 column=10 size=812 memory=353K

1950N	0001180	E	57296.51	57503.72	000	N	21.4	+006.6	+008.2	025	074	001.3
1950N	0001190	E	57291.30	57498.71	000	N	21.4	+009.7	+007.6	034	080	001.5
1950N	0001200	E	57295.37	57503.42	000	N	21.4	+005.6	+006.3	056	085	001.8
1950N	0001210	E	57297.48	57504.61	000	N	21.4	+010.7	+013.6	020	054	001.0
1950N	0001220	E	57295.20	57502.20	000	N	21.4	+005.8	+008.2	042	082	001.6
1950N	0001230	E	57291.64	57499.19	000	N	21.4	+004.3	+007.1	044	084	001.6
1950N	0001240	E	57292.17	57499.56	000	N	21.4	+003.6	+003.6	078	066	001.8
1950N	0001250	E	57294.46	57501.70	000	N	21.4	+003.3	+007.0	029	077	001.4
1950N	0001260	E	57296.84	57503.51	000	N	21.4	+003.5	+005.6	029	075	001.4
1950N	0001270	E	57296.01	57502.55	000	N	21.4	+003.7	+002.2	038	072	001.4
1950N	0001280	E	57295.33	57501.95	000	N	21.4	+006.0	+003.2	033	084	001.6
1950N	0001290	E	57296.10	57503.28	000	N	21.4	+006.4	+003.0	041	018	000.9
1950N	0001300	E	57298.80	57506.33	000	N	21.4	+012.4	+006.0	083	073	000.9
1950N	0001310	E	57300.97	57506.66	000	N	21.4	-016.2	-008.5	072	-127	001.3
1950N	0001320	E	57298.43	57502.32	000	N	21.4	+015.6	+002.1	048	-068	001.4
1950N	0001330	E	57293.63	57498.28	000	N	21.4	+022.2	+002.2	022	075	001.4
1950N	0001340	E	57289.30	57493.65	000	N	21.4	+025.4	+002.9	022	063	001.1
1950N	0001350	E	57294.05	57498.45	000	N	21.4	+027.6	-001.5	020	060	001.1
1950N	0001360	E	57295.64	57500.28	000	N	21.4	+027.9	+009.3	061	058	001.5
1950N	0001370	E	57293.18	57497.51	000	N	21.4	+030.2	-000.7	020	063	001.1
1950N	0001380	E	57298.04	57502.23	000	N	21.4	+023.9	+006.7	054	064	001.5

====>
F2=ADDLN F3=SAVE F4=FILE ALT-(B=BLOCK L=BLINE K=BCOPY M=BMOVE G=BDEL D=DEL)

c:\francopy.raw line=600 column=10 size=812 memory=353K

1950N	0001380	E	57298.04	57502.23	000	N	21.4	+028.9	+006.7	054	064	001.5
1950N	0001390	E	57292.31	57495.92	000	N	21.4	+028.1	+006.5	032	068	001.3
1950N	0001400	E	57293.16	57496.77	000	N	21.4	+027.0	+006.2	042	068	001.4
1950N	0001410	E	57287.54	57490.81	000	N	21.4	+028.1	+004.3	024	057	001.1
1950N	0001420	E	57290.46	57493.87	000	N	21.4	+028.5	+005.9	034	058	001.2
1950N	0001430	E	57286.06	57490.03	000	N	21.4	+026.6	+006.6	045	062	001.3
1950N	0001440	E	57287.24	57491.35	000	N	21.4	+026.0	+003.7	035	061	001.2
1950N	0001450	E	57290.96	57494.36	000	N	21.4	+022.7	-005.1	035	026	000.7
1950N	0001460	E	57286.21	57489.74	000	N	21.4	+024.4	+008.2	115	082	001.2
1950N	0001470	E	57288.39	57492.15	000	N	21.4	+024.2	+008.0	106	089	001.2
1950N	0001480	E	57289.73	57493.48	000	N	21.4	+023.0	+006.3	089	104	001.2
1950N	0001490	E	57285.65	57489.36	000	N	21.4	+027.6	+008.6	115	066	001.1
1950N	0001500	E	57292.13	57494.68	000	N	21.4	+040.3	+013.4	057	124	001.2
1950N	0001510	E	57299.62	57502.21	000	N	21.4	+039.9	+009.0	028	065	001.2
1950N	0001520	E	57301.64	57504.01	000	N	21.4	+042.3	+001.9	032	027	000.8
1950N	0001530	E	57304.67	57506.74	000	N	21.4	+036.8	+006.1	092	064	001.0
1950N	0001540	E	57312.30	57514.37	000	N	21.4	+049.4	-003.1	031	081	000.7
1950N	0001550	E	57313.13	57515.09	000	N	21.4	+052.8	-013.8	036	070	000.7
1950N	0001560	E	57310.91	57512.49	000	N	21.4	+046.2	+017.4	063	115	001.1
1950N	0001570	E	57309.18	57510.39	000	N	21.4	+052.0	+005.5	048	112	001.0
1950N	0001580	E	57306.60	57507.84	000	N	21.4	+048.6	+014.8	058	120	001.1

F2=ADDLN F3=SAVE F4=FILE ALT-~~^~~ B=BLOCK L=BLINE K=BCOPY M=BMOVE G=BDEL D=DEL

c:francopy.raw line=620 column=10 size=812 memory=353K

1950N	0001580	E	57306.60	57507.84	000	N	21.4	+048.6	+014.8	058	120	001.1
1950N	0001590	E	57314.66	57515.87	000	N	21.4	+050.9	+011.0	037	055	001.1
1950N	0001600	E	57305.73	57506.96	000	N	21.4	+049.7	+012.9	041	057	001.2
1950N	0001610	E	57309.95	57510.97	000	N	21.4	+043.6	+014.2	051	052	001.3
1950N	0001620	E	57314.80	57515.30	000	N	21.4	+042.0	+007.3	038	061	001.2
1950N	0001630	E	57313.11	57513.42	000	N	21.4	+027.2	+000.8	045	014	000.8
1950N	0001640	E	57312.40	57512.55	000	N	21.4	+036.8	+011.2	066	121	001.2
1950N	0001650	E	57316.15	57516.22	000	N	21.4	+033.1	+007.0	025	062	001.2
1950N	0001660	E	57316.00	57515.97	000	N	21.4	+031.0	+010.5	031	065	001.2
1950N	0001670	E	57319.02	57518.97	000	N	21.4	+028.8	+007.4	039	060	001.2
1950N	0001680	E	57319.51	57519.39	000	N	21.4	+023.9	+006.8	034	066	001.3
1950N	0001690	E	57320.99	57520.66	000	N	21.4	+017.1	+008.8	052	069	001.5
1950N	0001700	E	57320.40	57519.57	000	N	21.4	+009.5	+003.5	024	060	001.1
1950N	0001710	E	57311.46	57510.62	000	N	21.4	+004.5	-007.6	062	045	001.3
1950N	0001720	E	57297.49	57496.63	000	N	21.4	+000.1	-001.3	042	069	001.4
1950N	0001730	E	57293.97	57493.10	000	N	21.4	-002.1	-002.4	038	067	001.3
1950N	0001740	E	57291.87	57490.71	000	N	21.4	-004.3	+000.1	024	060	001.1
1950N	0001750	E	57291.17	57490.10	000	N	21.4	-004.4	+002.8	017	055	001.0
1950N	0001760	E	57288.84	57487.23	000	N	21.4	-004.6	+000.3	033	062	001.2
1950N	0001770	E	57289.55	57488.20	000	N	21.4	-004.4	-005.2	051	049	001.2
1950N	0001780	E	57289.84	57487.62	000	N	21.4	+007.4	+017.3	018	-046	000.8

====>

F2=ADDLN F3=SAVE F4=FILE ALT-~~^~~ B=BLOCK L=BLINE K=BCOPY M=BMOVE G=BDEL D=DEL

c:francopy.raw line=640 column=10 size=812 memory=353K

1950N	0001780	E	57289.84	57487.62	000	N	21.4	+007.4	+017.3	018	-046	000.8
1950N	0001790	E	57291.14	57489.53	000	N	21.4	-005.3	-000.2	051	-119	001.1
1950N	0001800	E	57291.44	57489.69	000	N	21.4	-001.6	-002.5	055	110	001.0
1950N	0001810	E	57290.40	57488.65	000	N	21.4	-000.4	+001.5	085	108	001.2
1950N	0001820	E	57285.20	57483.35	000	N	21.4	+000.8	+000.4	109	090	001.2
1950N	0001830	E	57290.05	57487.95	000	N	21.4	+002.4	+004.7	086	008	000.7
1950N	0001840	E	57283.66	57481.41	000	N	21.4	+000.2	-000.2	094	093	001.1
1950N	0001850	E	57282.49	57480.20	000	N	21.4	+004.1	+001.8	105	062	001.0
1950N	0001860	E	57281.86	57479.75	000	N	21.4	+005.7	+001.2	094	100	001.2
1950N	0001870	E	57283.73	57481.55	000	N	21.4	+008.1	+005.8	058	113	001.1
1950N	0001880	E	57290.90	57488.37	000	N	21.4	+008.6	+004.6	050	108	001.0
1950N	0001890	E	57296.15	57493.24	000	N	21.4	+014.2	+007.5	105	120	001.4
1950N	0001900	E	57298.12	57495.09	000	N	21.4	+013.3	+003.5	026	053	001.0
1950N	0001910	E	57296.88	57493.77	000	N	21.4	+019.7	+002.8	019	024	000.5
1950N	0001920	E	57297.47	57494.24	000	N	21.4	+010.7	+004.8	077	109	001.1
1950N	0001930	E	57296.21	57492.77	000	N	21.4	+012.1	+006.4	039	111	001.0
1950N	0001940	E	57293.68	57490.15	000	N	21.4	+010.8	+007.1	050	110	001.0
1950N	0001950	E	57297.11	57493.56	000	N	21.4	+011.0	+006.7	032	090	000.8
1950N	0001960	E	57300.37	57496.77	000	N	21.4	+010.2	+005.7	034	101	000.9
1950N	0001970	E	57299.83	57496.25	000	N	21.4	+013.0	+001.9	038	061	000.6
1950N	0001980	E	57310.52	57506.73	000	N	21.4	+012.0	+009.8	039	000	000.3

====>

F2=ADDLN F3=SAVE F4=FILE ALT-~~^~~ B=BLOCK L=BLINE K=BCOPY M=BMOVE G=BDEL D=DEL

c:francopy.raw line=660 column=10 size=812 memory=353K

1950N	0001980	E	57310.52	57506.73	000	N	21.4	+012.0	+009.8	039	000	000.3
1950N	0001990	E	57305.81	57501.75	000	N	21.4	+001.6	+006.8	116	120	000.7
1950N	0002000	E	57306.48	57502.37	000	N	21.4	+006.9	+003.9	071	100	001.1
1900N	0002000	E	57310.09	57505.81	000	N	21.4	-009.0	-003.7	062	094	001.0
1900N	0001990	E	57308.96	57504.54	000	N	21.4	-011.7	-005.6	045	088	000.8
1900N	0001980	E	57305.01	57500.50	000	N	21.4	-013.5	-008.5	041	088	000.8
1900N	0001970	E	57297.80	57493.21	000	N	21.4	-013.5	-007.6	058	089	000.9
1900N	0001960	E	57297.08	57492.18	000	N	21.4	-014.9	-005.8	070	063	000.8
1900N	0001950	E	57294.25	57489.22	000	N	21.4	-017.4	-002.8	058	015	000.5
1900N	0001940	E	57293.56	57488.57	000	N	21.4	-012.5	-005.2	051	066	000.7

```

1900N 0001930 E 57288.81 57483.16 000 N 21.4 -014.5 +001.6 072 012 000.3
1900N 0001920 E 57286.64 57480.93 000 N 21.4 -000.1 +003.1 074 044 000.3
1900N 0001910 E 57290.17 57484.01 000 N 21.4 +001.7 +005.5 082 099 000.5
1900N 0001900 E 57286.36 57481.14 000 N 21.4 -015.1 -006.2 040 069 000.7
1900N 0001890 E 57286.48 57481.15 000 N 21.4 -010.9 -004.7 050 064 000.7
1900N 0001880 E 57285.20 57479.95 000 N 21.4 -011.6 -002.7 057 055 000.7
1900N 0001870 E 57296.52 57491.32 000 N 21.4 -010.5 -001.4 049 036 000.5
1900N 0001860 E 57293.93 57488.35 000 N 21.4 -005.9 +000.5 071 039 000.7
1900N 0001850 E 57294.19 57488.49 000 N 21.4 -008.0 +001.6 047 037 000.5
1900N 0001840 E 57291.85 57486.25 000 N 21.4 -008.5 +003.2 055 077 000.4
1900N 0001830 E 57288.81 57483.16 000 N 21.4 -014.5 +001.6 072 012 000.3

```

```

====>
F2=ADDLN F3=SAVE F4=FILE ALT-( B=BLOCK L=BLINE K=BCOPY M=BMOVE G=BDEL D=DEL )

```

```

c:francopy.raw line=680 column=10 size=812 memory=353K

```

```

1900N 0001830 E 57288.81 57483.16 000 N 21.4 -014.5 +001.6 072 012 000.3
1900N 0001820 E 57286.64 57480.93 000 N 21.4 -000.1 +003.1 074 044 000.3
1900N 0001810 E 57290.17 57484.01 000 N 21.4 +001.7 +005.5 082 099 000.5
1900N 0001800 E 57283.22 57477.18 000 N 21.4 +005.4 +002.9 072 105 000.5
1900N 0001790 E 57290.49 57484.08 000 N 21.4 +003.6 +002.6 096 065 000.5
1900N 0001780 E 57292.40 57486.09 000 N 21.4 +006.8 +006.2 095 108 000.6
1900N 0001770 E 57291.14 57484.70 000 N 21.4 +003.7 +007.7 117 051 000.5
1900N 0001760 E 57293.85 57487.13 000 N 21.4 +002.7 +006.2 088 117 000.6
1900N 0001750 E 57294.15 57487.69 000 N 21.4 +004.2 +004.4 093 112 000.6
1900N 0001740 E 57297.39 57490.53 000 N 21.4 +003.1 +005.4 113 100 000.6
1900N 0001730 E 57302.26 57495.61 000 N 21.4 +001.9 -000.6 088 097 000.5
1900N 0001720 E 57324.09 57517.11 000 N 21.4 -004.9 -002.7 123 099 000.7

1900N 0001710 E 57322.04 57526.64 000 N 21.4 -012.1 -006.1 060 068 001.6
1900N 0001700 E 57305.25 57509.79 000 N 21.4 -014.6 -007.5 082 047 001.7
1900N 0001690 E 57302.35 57507.77 000 N 21.4 -016.6 -009.8 069 055 001.5
1900N 0001680 E 57299.07 57504.05 000 N 21.4 -019.7 -009.5 053 072 001.5
1900N 0001670 E 57293.74 57498.95 000 N 21.4 -021.1 -010.6 050 063 001.4
1900N 0001660 E 57293.12 57498.25 000 N 21.4 -022.3 -010.9 055 064 001.5
1900N 0001650 E 57293.09 57498.48 000 N 21.4 -023.0 -013.5 072 045 001.5
1900N 0001640 E 57292.62 57448.37 000 N 21.4 -027.8 -009.4 034 066 001.3

```

```

====>
F2=ADDLN F3=SAVE F4=FILE ALT-( B=BLOCK L=BLINE K=BCOPY M=BMOVE G=BDEL D=DEL )

```

```

c:francopy.raw line=700 column=10 size=812 memory=353K

```

```

1900N 0001640 E 57292.62 57448.37 000 N 21.4 -027.8 -009.4 034 066 001.3
1900N 0001630 E 57291.98 57497.45 000 N 21.4 -027.9 -005.4 033 064 001.2
1900N 0001620 E 57292.91 57498.75 000 N 21.4 -030.8 -005.8 037 066 001.3
1900N 0001610 E 57290.78 57496.73 000 N 21.4 -030.1 -007.1 036 065 001.3
1900N 0001600 E 57294.89 57500.41 000 N 21.4 -029.9 -008.0 042 060 001.3
1900N 0001590 E 57289.88 57495.58 000 N 21.4 -028.4 -009.7 055 054 001.3
1900N 0001580 E 57291.72 57497.64 000 N 21.4 -029.6 -006.8 035 059 001.2
1900N 0001570 E 57290.98 57496.94 000 N 21.4 -028.0 -008.5 053 051 001.3
1900N 0001560 E 57297.47 57493.87 000 N 21.4 -025.8 +000.4 033 033 000.8
1900N 0001550 E 57292.70 57498.76 000 N 21.4 -033.6 +001.3 067 107 001.1
1900N 0001540 E 57290.42 57496.52 000 N 21.4 -031.3 -008.9 082 109 001.2
1900N 0001530 E 57287.02 57493.45 000 N 21.4 -028.9 -013.7 075 116 001.2
1900N 0001520 E 57283.84 57490.52 000 N 21.4 -031.2 -014.1 118 046 001.1
1900N 0001510 E 57286.27 57493.10 000 N 21.4 -028.4 -009.1 082 118 001.2
1900N 0001500 E 57286.72 57493.53 000 N 21.4 -026.7 -007.5 090 117 001.3
1900N 0001490 E 57285.76 57493.03 000 N 21.4 -023.6 -005.3 043 060 001.3
1900N 0001480 E 57281.78 57488.99 000 N 21.4 -022.7 -007.4 062 041 001.3
1900N 0001470 E 57279.87 57486.85 000 N 21.4 -021.5 -003.1 063 052 001.4
1900N 0001460 E 57285.61 57492.77 000 N 21.4 -022.2 -004.1 070 042 001.4
1900N 0001450 E 57282.13 57488.59 000 N 21.4 -021.5 -001.5 043 063 001.3
1900N 0001440 E 57282.03 57488.50 000 N 21.4 -021.9 -003.3 041 062 001.3

```

```

====>
F2=ADDLN F3=SAVE F4=FILE ALT-( B=BLOCK L=BLINE K=BCOPY M=BMOVE G=BDEL D=DEL )

```

Line	Code	Address	Value	Code	Address	Value	Code	Address	Value	Code	Address	Value
1900N	0001440	E	57282.03	57488.50	000	N	21.4	-021.9	-003.3	041	062	001.3
1900N	0001430	E	57279.60	57486.20	000	N	21.4	-021.7	-002.0	051	057	001.3
1900N	0001420	E	57279.48	57486.01	000	N	21.4	-022.1	-003.5	058	051	001.3
1900N	0001410	E	57280.37	57486.99	000	N	21.4	-000.1	-007.9	044	039	001.0
1900N	0001400	E	57281.38	57488.02	000	N	21.4	-024.0	-005.5	098	114	001.3
1900N	0001390	E	57284.50	57491.10	000	N	21.4	-028.4	-014.2	125	039	001.1
1900N	0001380	E	57281.11	57487.82	000	N	21.4	-024.5	-007.1	070	026	001.3
1900N	0001370	E	57285.55	57492.25	000	N	21.4	-026.6	+010.9	029	058	001.1
1900N	0001360	E	57286.23	57493.01	000	N	21.4	-027.2	+003.7	026	067	001.2
1900N	0001350	E	57280.19	57486.88	000	N	21.4	-025.7	-005.2	057	057	001.4
1900N	0001340	E	57283.80	57490.07	000	N	21.4	-023.2	-005.9	057	058	001.4
1900N	0001330	E	57284.58	57490.61	000	N	21.4	-021.7	-001.9	049	062	001.4
1900N	0001320	E	57287.14	57493.31	000	N	21.4	-023.2	-003.6	041	075	001.5
1900N	0001310	E	57287.03	57492.96	000	N	21.4	-022.4	-002.7	060	062	001.5
1900N	0001300	E	57286.80	57492.79	000	N	21.4	-023.5	-002.5	082	014	001.4
1900N	0001290	E	57285.18	57491.49	000	N	21.4	-021.2	-002.9	076	039	001.5
1900N	0001280	E	57287.81	57494.11	000	N	21.4	-019.1	+001.9	030	076	001.4
1900N	0001270	E	57293.64	57499.96	000	N	21.4	-016.9	+002.0	069	058	001.6
1900N	0001260	E	57297.00	57503.38	000	N	21.4	-013.3	+003.4	062	053	001.4
1900N	0001250	E	57295.75	57502.34	000	N	21.4	-010.2	-001.0	039	079	001.5
1900N	0001240	E	57295.35	57501.86	000	N	21.4	-008.6	-001.3	027	073	001.4

====>
F2=ADDLN F3=SAVE F4=FILE ALT-{} B=BLOCK L=BLINE K=BCOPY M=BMOVE G=BDEL D=DEL }

c:francopy.raw line=740 column=10 size=812 memory=353K

1900N	0001240	E	57295.35	57501.86	000	N	21.4	-008.6	-001.3	027	073	001.4
1900N	0001230	E	57293.34	57499.76	000	N	21.4	-009.6	-002.2	058	082	001.7
1900N	0001220	E	57295.36	57501.50	000	N	21.4	-010.1	+000.7	089	037	001.7
1900N	0001210	E	57296.94	57503.50	000	N	21.4	-011.1	-006.1	022	048	000.9
1900N	0001200	E	57299.21	57505.72	000	N	21.4	-007.9	-005.5	040	077	001.5
1900N	0001190	E	57289.08	57495.53	000	N	21.4	+003.1	+004.9	029	-070	001.3
1900N	0001180	E	57295.25	57501.60	000	N	21.4	-008.9	-004.1	067	-069	001.7
1900N	0001170	E	57293.63	57499.76	000	N	21.4	-007.4	-005.2	044	084	001.7
1900N	0001160	E	57289.24	57495.64	000	N	21.4	-006.1	-004.6	034	085	001.6
1900N	0001150	E	57291.02	57497.32	000	N	21.4	-004.5	-000.2	073	058	001.6
1900N	0001140	E	57290.69	57496.95	000	N	21.4	-006.0	-002.0	037	079	001.5
1900N	0001130	E	57291.47	57498.04	000	N	21.4	-004.4	-000.3	020	078	001.4
1900N	0001120	E	57289.10	57495.92	000	N	21.4	-002.2	-001.4	024	060	001.1
1900N	0001110	E	57292.50	57499.29	000	N	21.4	-002.5	+002.2	047	084	001.7
1900N	0001100	E	57290.56	57497.32	000	N	21.4	-002.2	+002.4	048	083	001.7
1900N	0001090	E	57293.03	57499.73	000	N	21.4	-002.4	+007.0	069	054	001.6
1900N	0001080	E	57290.70	57497.47	000	N	21.4	-001.7	+004.8	047	078	001.6
1900N	0001070	E	57292.51	57499.25	000	N	21.4	-001.7	+003.9	032	080	001.5
1900N	0001060	E	57290.53	57497.35	000	N	21.4	-001.8	+005.6	031	084	001.6
1900N	0001050	E	57297.52	57504.36	000	N	21.4	+000.1	+002.3	033	044	000.9
1900N	0001040	E	57293.97	57500.96	000	N	21.4	-006.7	+012.2	068	071	001.7

====>
F2=ADDLN F3=SAVE F4=FILE ALT-{} B=BLOCK L=BLINE K=BCOPY M=BMOVE G=BDEL D=DEL }

c:francopy.raw line=760 column=10 size=812 memory=353K

1900N	0001040	E	57293.97	57500.96	000	N	21.4	-006.7	+012.2	068	071	001.7
1900N	0001030	E	57292.33	57499.39	000	N	21.4	+000.9	+003.6	021	063	001.1
1900N	0001020	E	57290.40	57496.99	000	N	21.4	-005.2	+008.6	044	086	001.7
1900N	0001010	E	57289.79	57496.45	000	N	21.4	-009.8	+014.8	098	027	001.8
1900N	0001000	E	57289.96	57496.97	000	N	21.4	-014.9	+010.0	095	-011	001.7
1900N	0000990	E	57294.29	57501.25	000	N	21.4	-008.0	+010.8	033	-083	001.6
1900N	0000980	E	57293.18	57500.17	000	N	21.4	-013.9	+013.7	081	051	001.7
1900N	0000970	E	57287.01	57494.17	000	N	21.4	-008.8	+008.7	037	092	001.7
1900N	0000960	E	57282.24	57489.61	000	N	21.4	+004.0	+000.6	075	021	001.4
1900N	0000950	E	57280.94	57488.19	000	N	21.4	-019.4	+011.0	066	073	001.7
1900N	0000940	E	57280.53	57487.43	000	N	21.4	-022.4	+020.6	027	023	001.8
1900N	0000930	E	57280.37	57486.99	000	N	21.4	-000.1	-007.9	044	039	001.0


```

1900N 0000810 E 57299.72 57506.97 000 N 21.4 -013.2 +012.3 025 088 001.2
1900N 0000820 E 57302.19 57508.95 000 N 21.4 -012.7 +038.2 026 055 001.1
1900N 0000890 E 57305.91 57513.07 000 N 21.4 -015.9 +007.2 043 067 001.4
1900N 0000880 E 57306.66 57513.80 000 N 21.4 +018.2 +009.7 035 -046 001.0
1900N 0000870 E 57302.12 57509.10 000 N 21.4 -017.5 +009.6 050 -114 001.1
1900N 0000860 E 57296.40 57503.35 000 N 21.4 -015.9 +006.4 067 097 001.0
1900N 0000850 E 57290.32 57497.14 000 N 21.4 -010.9 +010.7 042 058 000.6
1900N 0000840 E 57290.05 57496.75 000 N 21.4 +005.1 +001.8 052 -085 000.8
=====

```

F2=ADDLN F3=SAVE F4=FILE ALT-*l* B=BLOCK L=BLINE K=BCOPY M=BMOVE G=BDEL D=DEL }

c:francopy.raw line=780 column=10 size=812 memory=353K

```

1900N 0000840 E 57290.05 57496.75 000 N 21.4 +005.1 +001.8 052 -085 000.8
1900N 0000830 E 57288.34 57494.95 000 N 21.4 +003.2 -001.5 063 116 001.1
1850N 0000830 E 57277.73 57484.35 000 N 21.4 -008.8 -007.5 076 -127 001.3
1850N 0000840 E 57280.76 57487.34 000 N 21.4 -008.7 -006.5 033 073 001.4
1850N 0000850 E 57274.01 57480.64 000 N 21.4 -000.1 +011.4 088 -044 001.7
1850N 0000860 E 57277.62 57484.13 000 N 21.4 -007.4 +016.3 039 066 001.3
1850N 0000870 E 57279.52 57485.94 000 N 21.4 -016.4 -008.1 027 -054 001.0
1850N 0000880 E 57275.78 57481.70 000 N 21.4 -003.4 -016.4 047 037 001.0
1850N 0000890 E 57274.46 57480.23 000 N 21.4 -026.1 +018.0 058 -018 000.5
1850N 0000900 E 57275.70 57481.79 000 N 21.4 +000.2 -016.1 053 -123 001.1
1850N 0000910 E 57274.28 57480.72 000 N 21.4 +005.2 -016.3 059 049 000.6
1850N 0000920 E 57272.71 57479.54 000 N 21.4 +014.1 -018.1 046 104 001.0
1850N 0000930 E 57280.82 57487.48 000 N 21.4 -024.1 -005.0 079 -081 001.0
1850N 0000940 E 57287.26 57493.63 000 N 21.4 +020.8 -026.0 039 -090 000.8
1850N 0000950 E 57286.32 57492.19 000 N 21.4 +021.4 -045.6 049 068 000.7
1850N 0000960 E 57283.97 57489.57 000 N 21.4 +021.9 -032.0 046 106 001.0
1850N 0000970 E 57285.10 57490.75 000 N 21.4 +026.1 -021.8 079 120 001.2
1850N 0000980 E 57294.58 57500.27 000 N 21.4 +016.0 -025.1 030 065 001.2
1850N 0000990 E 57291.40 57497.01 000 N 21.4 +013.9 -014.6 041 073 001.5
1850N 0001000 E 57294.09 57499.68 000 N 21.4 +015.0 -013.0 042 069 001.3
1850N 0001010 E 57295.07 57501.69 000 N 21.4 +008.7 -019.7 034 072 001.4
=====

```

F2=ADDLN F3=SAVE F4=FILE ALT-*l* B=BLOCK L=BLINE K=BCOPY M=BMOVE G=BDEL D=DEL }

c:francopy.raw line=800 column=10 size=812 memory=353K

```

1850N 0001010 E 57295.07 57501.69 000 N 21.4 +008.7 -019.7 034 072 001.4
1850N 0001020 E 57298.45 57503.97 000 N 21.4 +010.9 -013.8 039 075 001.5
1850N 0001030 E 57287.22 57492.35 000 N 21.4 +012.1 -013.2 046 071 001.5
1850N 0001040 E 57284.67 57489.65 000 N 21.4 +006.9 -011.3 045 077 001.6
1850N 0001050 E 57284.85 57489.62 000 N 21.4 +008.1 -012.5 064 066 001.6
1850N 0001060 E 57291.29 57496.02 000 N 21.4 +003.3 -011.0 039 079 001.5
1850N 0001070 E 57289.46 57494.26 000 N 21.4 +003.6 -022.7 039 069 001.4
1850N 0001080 E 57289.25 57493.78 000 N 21.4 -002.9 -014.7 028 070 001.3
1850N 0001090 E 57295.55 57499.74 000 N 21.4 +003.7 -011.1 057 072 001.6
1850N 0001100 E 57291.85 57495.84 000 N 21.4 +000.9 -009.6 042 079 001.6
1850N 0001110 E 57301.15 57504.88 000 N 21.4 +001.0 -009.9 049 072 001.5
1850N 0001120 E 57292.26 57495.75 000 N 21.4 +001.1 -010.5 033 079 001.5

```

* * * end of file * * *

=====
F2=ADDLN F3=SAVE F4=FILE ALT-*l* B=BLOCK L=BLINE K=BCOPY M=BMOVE G=BDEL D=DEL }