

ASSESSMENT WORK REPORT

for the

LAST CHANCE REVERTED CROWN GRANT MINERAL LEASE (L.644)

MINING LEASE # 216293

GREENWOOD MINING DIVISION
BRITISH COLUMBIA
N.T.S. MAP No. 82E/2
North Lat. 49° 03' 45", West Long. 118° 40' 20"

RECEIVED

NOV 01 1995

Gold Commissioner's Office
VANCOUVER, B.C.

for

BOW MINES LTD.
4793 Commercial Drive
Vancouver, B.C. V5N 2G8
Ph. (604) 876 - 3606
Mineral Licence 123906
Work Permit No. KAM-1400089-616
Operator: Karl Schindler

by

ASH & ASSOCIATES CONSULTING LTD.

201 - 314 West Pender Street
Vancouver, B.C. V6B 1T1

October 29, 1995

**GEOLOGICAL BRANCH
ASSESSMENT REPORT**

GEOLOGICAL SURVEY BRANCH
ASSESSMENT REPORTS

DATE RECEIVED

NOV 24 1995

FILMED

24,110

(i)
TABLE OF CONTENTS

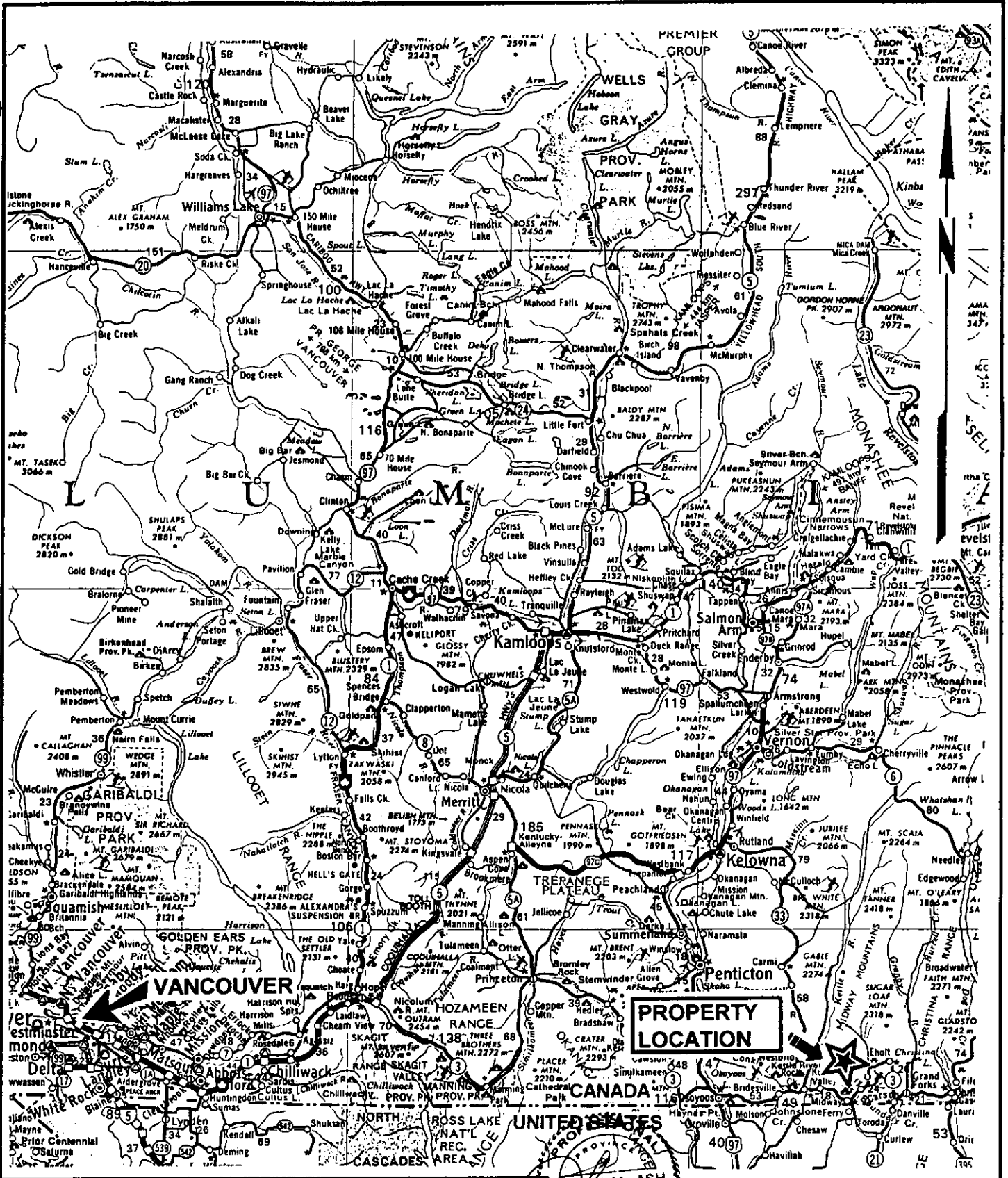
INTRODUCTION.....	1
LOCATION & ACCESS.....	1
TOPOGRAPHY.....	1
HISTORY.....	1
GENERAL GEOLOGY.....	2
ECONOMIC ASSESSMENT.....	2
OBJECTIVE & SCOPE OF WORK PERFORMED.....	3
WORK PERFORMED.....	3
RESULTS & CONCLUSITONS.....	3
STATEMENT OF COSTS.....	4
CERTIFICATE OF QUALIFICATIONS.....	5

DRAWINGS:

Fig. 1: B.C. Location Map: Scale 1:2,125,000

Fig. 2: Claims Location Map and General Topography: Scale 1:50,000

Fig. 3: Drillhole Location Map, General Geology & Topography: Scale: 1,2000



Client: **BOW MINES LTD.**

Property: **LAST CHANCE R.C.G. MINERAL LEASE**

B. C. LOCATION MAP

Date: Oct 30, 1995 Scale: 1 : 2,125,000 Dr: WA **FIG. 1**

WAVE M. ASH
ENGINEER

ASH & ASSOCIATES CONSULTING LTD., Mining Consultants

201 - 314 West Pender St., Vancouver, B.C. V6B 1T1 Ph & Fax: (604) 682 5211

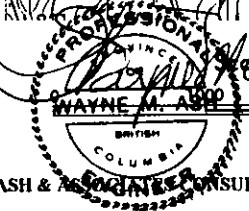


Client **BOW MINES LTD.**

Property **LAST CHANCE R.C.G. MINERAL LEASE**

CLAIMS LOCATION MAP & GENERAL TOPOGRAPHY

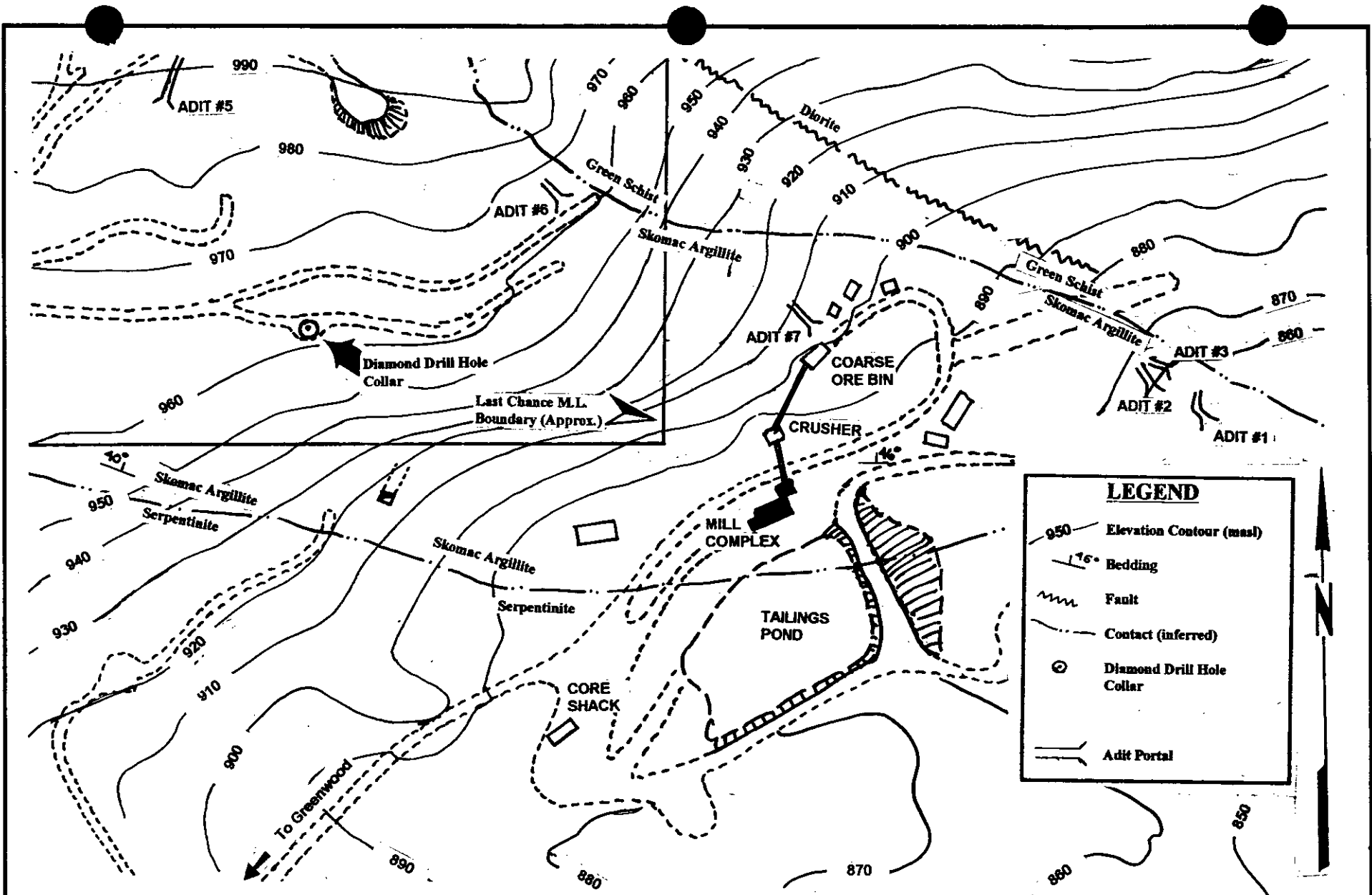
Date: **Oct 30, 1995** Scale: **1 : 50,000** Dr. **WA FIG. 2**



ASH & ASSOCIATES CONSULTING LTD., Mining Consultants

201 - 314 West Fender St., Vancouver, B.C. V6B 1T1

Ph & Fax: (604) 682 5211



Client:	BOW MINES LTD.		
Property:	LAST CHANCE R.C.G. MINERAL LEASE		
GENERAL LOCATION MAP, GEOLOGY & TOPOGRAPHY			
Date:	Oct 30, 1995	Scale:	1: 2,000
Dr:	WA	FIG. 3	

ASH & ASSOCIATES CONSULTING LTD., Mining Consultants

201 - 314 West Pender St., Vancouver, B.C. V4B 1T1 Ph & Fax: (604) 682 5211

LEGEND

- 950 Elevation Contour (masl)
- 16° Bedding
- Fault
- Contact (inferred)
- Diamond Drill Hole Collar
- Adit Portal



INTRODUCTION

The Last Chance claim, which lies in the Greenwood area of B.C. was diamond drilled in July, 1995. The following report describes the work conducted and the data required for the Ministry of Mines.

LOCATION AND ACCESS

The Last Chance mineral lease makes up part of the Bow Mines Ltd. property, a.k.a. the Robert Mine, Last Chance Mine, Skomac Mine. It is located approximately four kilometers south-west of Greenwood, B.A. (See Figure 1), on NTS map No. 82E/2, at 49° 30' 45" N. Latitude, 118° 40' 30" W. Longitude. Access to the property is via a road which takes off to the northwest from Highway No. 3, a distance of some five kilometers south of Greenwood (see Fig. 2). The access road, which winds up the hill to the property, is know locally as the Boltz Farm Road and the Last Chance claim is located about 3.5 kilometers along this road. The claim location and access route are depicted on Figure 2.

TOPOGRAPHY

The Last Chance claim lies at elevations from 900 to 1,050 meters above sea level. The topographical contours run in a general east-west direction and the topography is rather bench-like, with relatively flat areas interspersed with steep bluffs, as shown on Figure 3.

HISTORY

The Last Chance claim was originally staked about 1894. By 1904, four adits had been driven on the upper quartz vein on this and the adjoining crown grants. Since 1904, a production of 5,734 tons of ore was recorded as having been produced and shipped. In 1964 the fifth adit was driven, in 1974 the sixth Level portal was collared and in 1974 driving of the seventh level was started. In 1977, three diamond rill holes were drilled, a grid was laid out, a soil-sampling program conducted and milling machinery purchased. In 1978 an EM survey was conducted, diamond drill and percussion holes drilled, and cross-cuts were advanced on the sixth Level. In 1980, the sixth and seventh Levels were connected by a raise and the flotation mill was installed. In 1987, fifteen underground diamond drill holes were drilled for a total of some 450 lineal meters and the area was geologically mapped. The author is not aware of any major exploration work having been conducted between then and 1995. This year's work consisted of drilling a 90-meter diamond drill hole.

GEOLOGY

The area is underlain by a variety of sediments, volcanics and intrusives, some of which are metamorphosed.

The main ore veins discovered and mined to-date occur within a triangular-shaped block of argillite sandwiched between a belt of serpentinite on the footwall and a diorite/schist formation on the hangingwall.

The general strike of the argillite body (locally termed the Skomac Argillite) is west to northwest and tends to dip to the northeast at a rough average between 40 and 45 degrees. In the area that the diamond drilling was conducted the argillite formation reaches a width approaching 200 meters.

Several quartz veins occur within the argillite unit, mainly within a width of fifty meters of the argillite/diorite schist contact. However, at least one quartz vein occurs near the footwall contact, upon which an old decline shaft was sunk.

In British Columbia, serpentinite/argillite contacts have often been found to embrace auriferous gold veins. Examples include deposits in the Bralorne and Ladner Creek camps. On the Last Chance claim, the serpentinite/argillite contact is covered by overburden. Diamond drilling was recommended some years ago to test this contact at depth.

ECONOMIC ASSESSMENT

Production for the Last Chance mine is listed by the B.A. Minister of Mines reports as being 5,734 tons. Of this amount, accounts of 4,652 tons have been found by the author, and are listed as follows:

YEAR	TONS	Au Grade (Oz/ton)	Ag Grade (Oz/ton)
1903 to 1904	41	0.23	?
1904 to 1937	890	0.17	110
1962 to 1964	670	0.04	5.41
1964 to 1969	68	?	?
1975	478	0.14	20.3
1976	604	0.07	11.8
1983	1091	0.024	3.36
Total tons accounted for	4,652		

Considerable mineral reserves are believed to remain underground. These apparently consist of low-grade gold and silver mineralization in the range of 0.10 oz Au/ton and five to ten oz Ag/ton, plus galena and sphalerite. However, at present prices these cannot be considered ore even though the mill is immediately adjacent to the main (No. 7) Adit.

OBJECTIVE & SCOPE

The objective for the 1995 exploration program was to drill a diamond drill hole from the argillite into the underlying serpentinite to determine whether there would be some indication that a structure would exist along this contact which was conducive to the deposition of precious metals.

WORK PERFORMED

The work performed in 1995 consisted of drilling a diamond drill hole to intersect the contact between the underlying serpentinite and the overlying argillite.

The diamond drill hole collar was located 190 meters due west of the No. 7 Adit portal, at an elevation of about 958 meters. The hole was drilled vertically to a depth of 91.4 meters. The size of the core was BQ. The entire hole was drilled in more-or-less massive argillite except for the last 0.25 meters, which was in serpentinite. Core recovery was very close to 100% for the entire hole. The author found the dip of the bedding to vary from 35 to 45 degrees with an average apparent overall dip in the range of 40°.

The core is located in the core-shack at the Bow Mines Ltd. Mill-site.

The drilling was conducted by:

ADAM DIAMOND DRILLING LTD.
P.O. Box 1691
Princeton, B.C. VOX 1W0

The drilling was carried out between July 9 and July 15, 1995. The driller was George Adams and the drilling was supervised by Don Ripon.

The drill-site was inspected and approved by Wayne M. Ash, P. Eng.

RESULTS & CONCLUSIONS

From the location of the intersection of the serpentinite/argillite contact, it would appear that the argillite lays conformably upon the serpentinite. No suggestion of quartz veining was detected along the entire core length. Therefore, no samples were taken for assay. Since there was no faulting or veining along this contact at the location where the drill hole was drilled, the potential for encountering veining along this contact is not considered good. Therefore, no

further diamond drilling is recommended to test this contact.

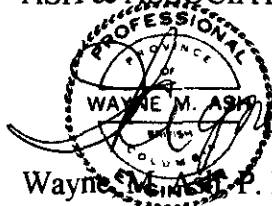
STATEMENT OF COSTS

The costs were as follows:

Mobilization and Demobilization.....	\$800.00
91.44 meters BQ hole @ \$43.47 per meter.....	3,975.00
GST on drilling.....	278.25
Time & Expenses for W. M. Ash, P. Eng. for trave, inspection, core logging, report preparation	\$200.00
GST on labour.....	<u>14.00</u>
TOTAL.....	\$5,267.50

The amount submitted to be applied to the assessment work on the claim was \$4,680.

Submitted by,
ASH & ASSOCIATES CONSULTING LTD.

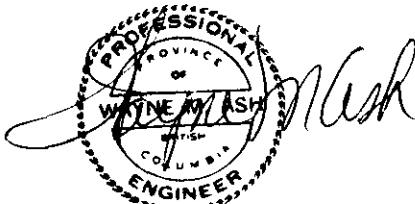
 *W. M. Ash*
Wayne M. Ash, P. Eng.

CERTIFICATE OF QUALIFICATIONS

I, Wayne M. Ash, P. Eng. of 201 - 314 West Pender Street, Vancouver, B.C. do hereby certify that:

1. I am a graduate of Haileybury School of Mines, (1965) and of Michigan Technolical University (B.S. Mining Engineering, 1969).
2. I am a Registered Professional Engineer with the Association of Professional Engineers of British Columbia (1971).
3. I have been directly involved in the minerals industry for thirty five years.
4. This report is based upon a visit to the Last Chance mine, inspection of the drill-site and drill core.
5. I do not have, nor do I expect to receive, either directly or indirectly, any interest in the properties or securities of Bow Mines Ltd..
6. This report is for use by government for assessment work purposes and is not meant for use for any promotional purposes regarding the individual claim or general property of the Last Chance Mine.

Dated at Vancouver, B.C., this 29th day of October, 1995.

A circular seal for a Professional Engineer in the Province of British Columbia. The seal contains the text "PROFESSIONAL ENGINEER" around the perimeter and "PROVINCE OF BRITISH COLUMBIA" in the center. Overlaid on the seal is a handwritten signature in cursive that reads "Wayne M. Ash".

Wayne M. Ash, P. Eng.