

GEOLOGICAL SURVEY BRANCH  
ASSESSMENT REPORTS

DATE RECEIVED  
NOV 27 1995

JUN 21 1996

**PERCUSSION DRILLING REPORT**

on the

**DOMINIC MINERAL CLAIMS**

**Kamloops Mining Division  
British Columbia**

**N.T.S. 092I/10E  
Latitude 50° 35' N  
Longitude 120° 43' W**

for

**Mr. Charles Boitard  
2245 West 13th Avenue  
Vancouver, B.C.  
V6K 2S4**

by

**P. REYNOLDS, B.Sc., P.Geo.  
NOVEMBER 9, 1995**

**FILMED**

**GEOLOGICAL SURVEY BRANCH  
ASSESSMENT REPORT**

**24,134**

## TABLE OF CONTENTS

1.	SUMMARY	2
2.	INTRODUCTION	2
3.	LOCATION, ACCESS AND PHYSIOGRAPHY	2
4.	CLAIM STATUS	3
5.	HISTORY	3
6.	GEOLOGY	4
7.	PERCUSSION DRILLING	4
8.	CONCLUSION AND RECOMMENDATIONS	5
9.	REFERENCES	5
10.	CERTIFICATE	6

## LIST OF FIGURES

FIGURE 1	LOCATION MAP	FOLLOWS PAGE 2
FIGURE 2	CLAIM MAP	FOLLOWS PAGE 3
FIGURE 3	REGIONAL GEOLOGY	FOLLOWS PAGE 4
FIGURE 4	DRILL PLAN	BACK POCKET

## APPENDICES

APPENDIX I	STATEMENT OF COSTS
APPENDIX II	DIAMOND DRILL LOG
APPENDIX III	ANALYTICAL RESULTS

## **1. SUMMARY**

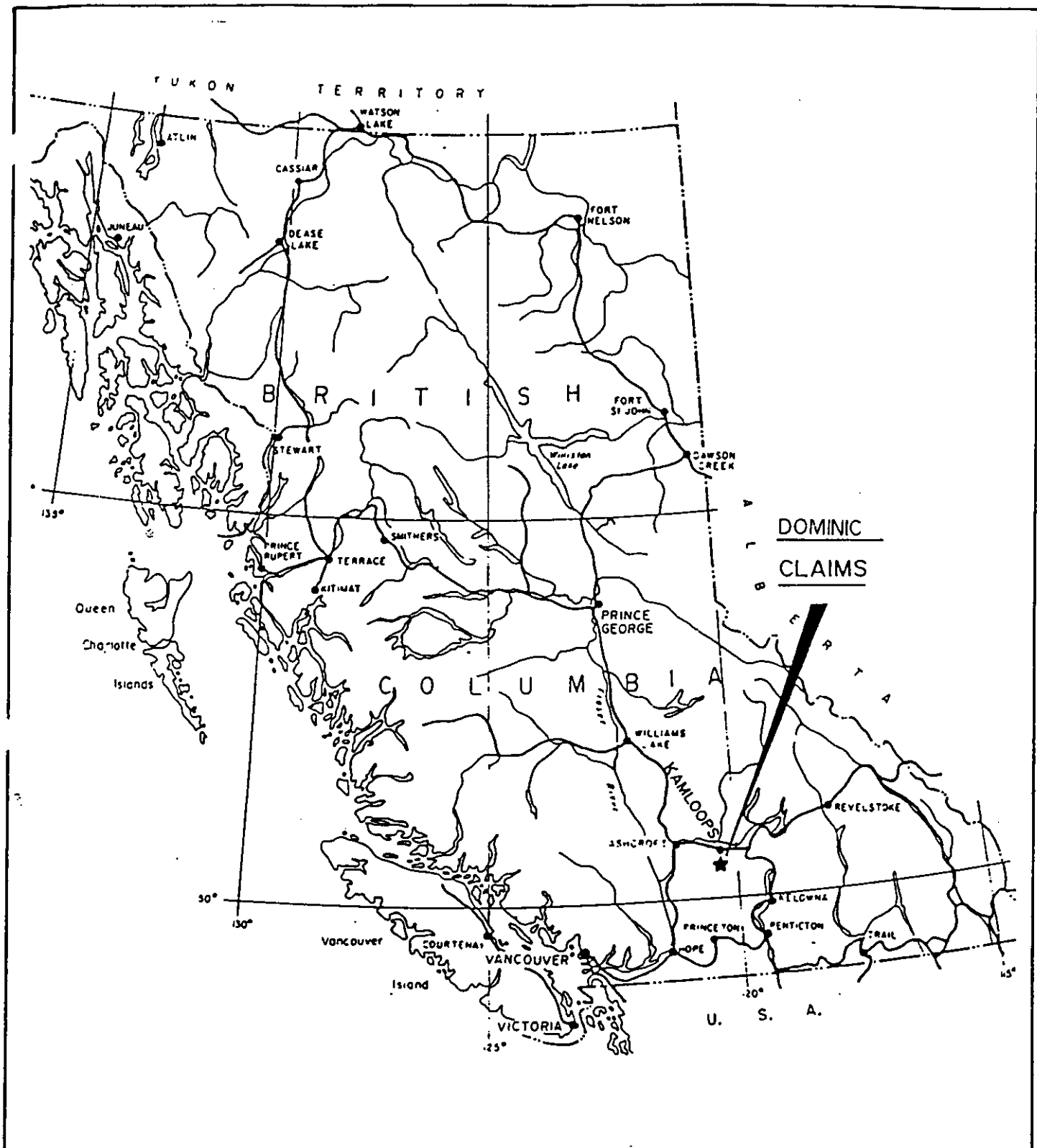
- 1.1 The Dominic property consists of eight contiguous mineral claims totalling 63 units. The claims are located approximately 30 kilometres west of Kamloops, B.C. The claims are accessible by good gravel roads from Savona.
- 1.2 The property is underlain by andesites of the Nicola Volcanics.
- 1.3 Three percussion holes were drilled in 1995 to test for copper mineralization. Only one hole is being reported on. No economic amounts of copper mineralization were encountered.

## **2. INTRODUCTION**

- 2.1 This report has been prepared at the request of Mr. Charles Boitard to satisfy assessment requirements.
- 2.2 The information for the following report was obtained from sources cited under references and from the authors drill log of PDH 95-1. The drilling program was carried out by Mr. Charles Boitard between July 11 and July 14, 1995.
- 2.3 The registered owner of the Dominic claims is Mr. Charles Boitard. The claims lie approximately 30 kilometres west of Kamloops, B.C. This area is known for its porphyry copper and molybdenum production from both volcanic and intrusive host rocks. Significant gold and silver has been recovered from these deposits.

## **3. LOCATION, ACCESS AND PHYSIOGRAPHY**

- 3.1 The Dominic property is located on the Thompson Plateau approximately 30 kilometres west of Kamloops, B.C. The claims are centered at 50° 35' north latitude and 120° 43' west longitude on NTS map sheet 092I/10E. The claims are in the Kamloops Mining Division.
- 3.2 Access is provided by the Trans-Canada Highway and then south along Tunkwa Lake Road which branches off the highway at Savona. The Tunkwa Lake Road is followed for approximately 14 kilometres to the Durand Creek Road which is in turn followed for 15 kilometres to the base line on the Fox claim. Alternately, access may be gained from the Coquihalla Highway by taking the Logan Lake turnoff.



DOMINIC  
CLAIMS

REYNOLDS GEOLOGICAL

LOCATION MAP

KAMLOOPS M.D. NTS: 0921/10E

DRAWN: PR.	MAY '93	FIG. NO. 1
------------	---------	------------

3.3 The property lies between elevations 1,525 and 1,595 metres above sea level. Vegetation consists of open to moderate Jack Pine. The property has been partially logged. Water for all stages of exploration is available from several large swamps and Chartrand Creek. The climate is characterized by warm, dry summers and cool winters with low to moderate snowfall.

#### 4. CLAIM STATUS

4.1 The Dominic property comprises eight mineral claims totalling 63 units. Complete claim information is as follows:

<u>NAME</u>	<u>UNITS</u>	<u>RECORD NO.</u>	<u>EXPIRY DATE *</u>
Dominic North	8	216705	August 16, 1996
Dominic South	16	216706	August 16, 1997
Fox	20	300282	June 9, 1997
Fox 2	8	339085	August 16, 1996
Fox 3	1	339105	August 10, 1996
Fox 4	1	339106	August 10, 1996
Fox 5	1	339107	August 10, 1996
Fox 6	8	340357	September 15, 1996

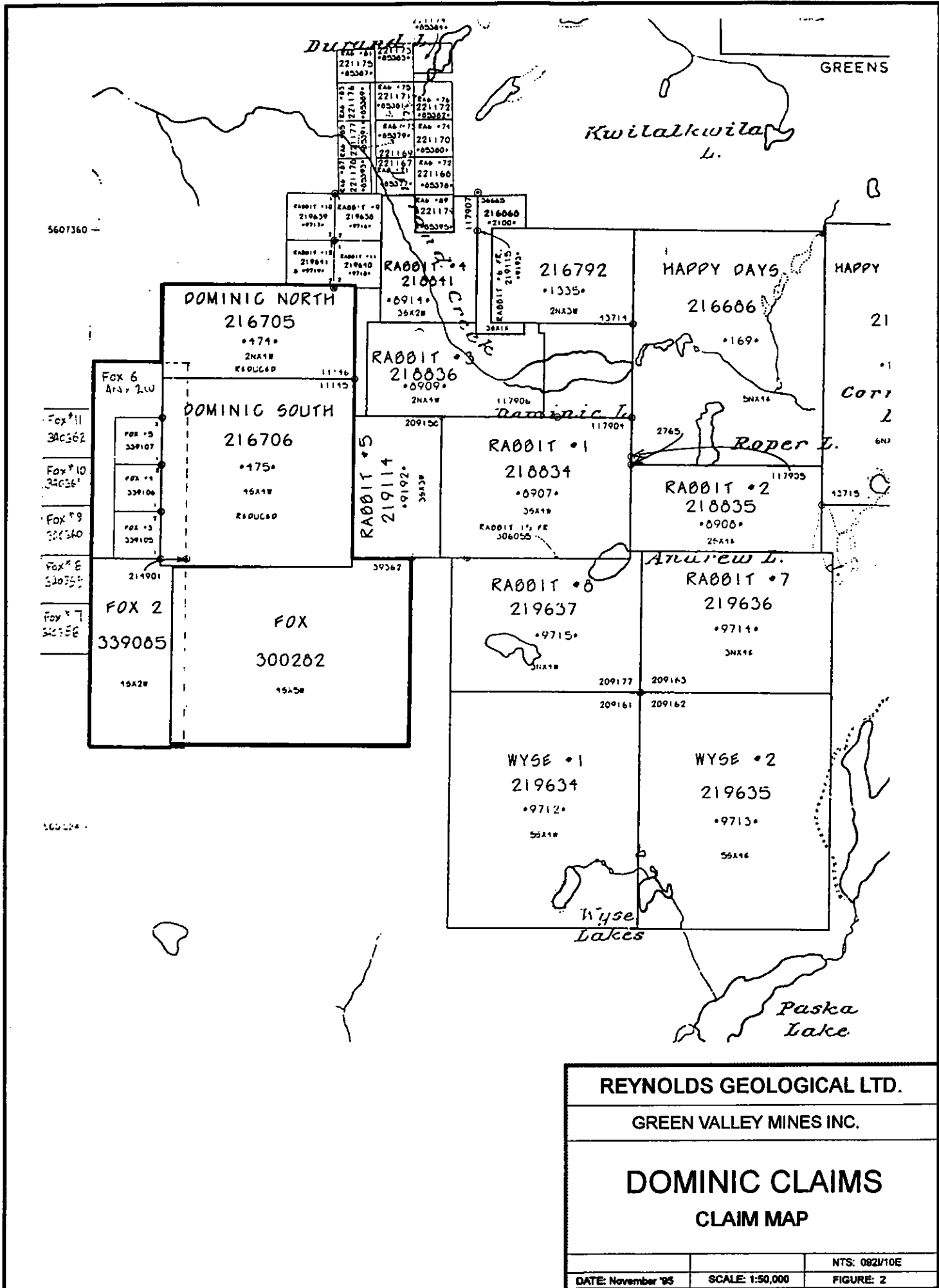
\* Includes assessment currently being applied.

4.2 The Fox 6 claim overstates all of the Fox 3, Fox 4 and Fox 5 claims.

4.3 All claims are recorded in the name of Mr. Charles Boitard. Any legal aspect of claim ownership is beyond the scope of this report.

#### 5. HISTORY

5.1 The first recorded work on the property was in 1978 when induced polarization surveys and soil geochemical surveys were carried out over a portion of the Dominic property by Geotronics Surveys Ltd. The I.P. survey delineated five anomalies, one of which is particularly interesting because of its size and its correlation with a resistivity low. Only two lines were soil sampled therefore the results are difficult to interpret with any meaning.



5607360

Fox #11  
340362

Fox #10  
340361

Fox #9  
340360

Fox #8  
340359

Fox #7  
340358

5607364

Fox 6  
Area 2LW  
 Fox #5  
339107  
 Fox #4  
339106  
 Fox #3  
339105

214901  
**FOX 2**  
**339085**  
 15A2W

**DOMINIC NORTH**  
**216705**  
 •474•  
 2NAX1W  
 RADUGED  
 11116  
 11115

**DOMINIC SOUTH**  
**216706**  
 •475•  
 15A1W  
 RADUGED

**FOX**  
**300282**  
 15A5W

RABBIT #10  
219639  
•9713•

RABBIT #9  
219638  
•9712•

**RABBIT #4**  
**218841**  
 •8914•  
 35A2W

**RABBIT #3**  
**218836**  
 •8909•  
 2NAX1W

**RABBIT #5**  
**219114**  
 •9192•  
 35A3W

RABBIT #6 FC  
216660  
•2100•

**RABBIT #1**  
**218834**  
 •8907•  
 35A1W  
 RABBIT 1 1/2 FC  
306055

**RABBIT #8**  
**219637**  
 •9715•  
 35A1W

**WYSE #1**  
**219634**  
 •9712•  
 55A1W

**HAPPY DAYS**  
**216686**  
 •1335•  
 2NAX3W  
 13714

**RABBIT #2**  
**218835**  
 •8908•  
 25A1E

**RABBIT #7**  
**219636**  
 •9714•  
 3NAX1E

**WYSE #2**  
**219635**  
 •9713•  
 55A1E

**WYSE #2**  
**219635**  
 •9713•  
 55A1E

GREENS

B

HAPPY

21

•1

Corr

2

6N2

13715

Durrant L.

Kwi-lak-wi-lak L.

Dominic T.

Roper L.

Wyse Lakes

Paska Lake

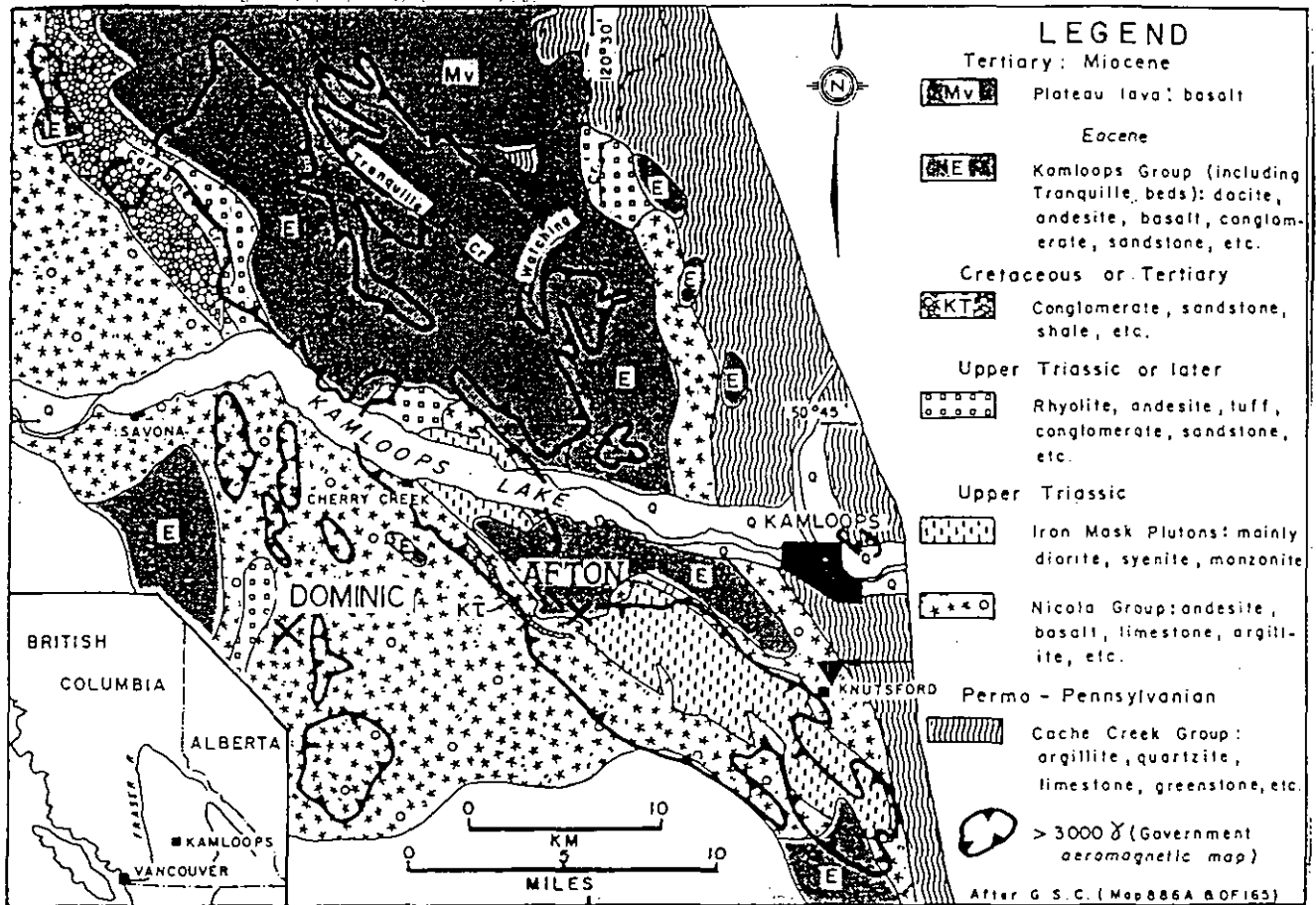
- 5.2 In January and February, 1980 a percussion drilling program was carried out on the property by Green Valley Mines Inc. Goldsmith et. al. reported that the results of the percussion drilling were low but could be correlated with lithology (La Rue, 1991).
- 5.3 In 1984, exploration consisted of induced polarization, VLF-EM, trenching and rock and soil sampling and one diamond drill hole.
- 5.4 In 1991, more induced polarization surveys were completed on the property and in 1993 one diamond drill hole was completed. Three percussion drill holes were completed in 1994.

## **6. GEOLOGY**

- 6.1 The Dominic claims lie within the Quesnel Trough, a 30 to 60 kilometre wide belt of Lower Mesozoic volcanic and related sedimentary rocks bounded by older sedimentary rocks of the Cache Creek Group to the east and younger Coast Intrusions to the west. In the area of the Dominic claims the Quesnel Trough is dominated by Upper Triassic Nicola Group andesites, basalts, tuffs and argillites. The Nicola Group is intruded by Upper Triassic - Lower Jurassic diorite, syenite and monzonite of the Iron Mask Batholith. This batholith represents a major northwest trending structure that crosscuts the north-northwesterly trending Nicola volcanics. Portions of this area are obscured by later plateau lavas.
- 6.2 Bedrock exposure in this area amounts to only about ten percent, the rest being covered by glacial drift deposited from Pleistocene ice sheets that moved from northwest to southeast.
- 6.3 No systematic, property scale geological mapping has been carried out on the property. The Dominic South claim is underlain by andesite of the Nicola Group. Alteration of the Nicola Andesite consists of propylitization. The resultant alteration products consist of hematite, chlorite, epidote and calcite.

## **7. PERCUSSION DRILLING**

- 7.1 During the period July 11 to July 14, 1995 three percussion drill holes were completed on the Dominic South claim. The holes were drilled vertically to test for sulphide mineralization within an area outlined by anomalous geophysical signatures as defined in previous surveys. Only one drill hole, PDH 95-1, is reported on in this report. The drill hole locations are plotted on Figure 4.



REYNOLDS GEOLOGICAL

REGIONAL GEOLOGY

KAMLOOPS M.D.

NTS: 0921/10E

SCALE AS SHOWN

DRAWN: P.R.

MAY '93

FIG. NO. 3



- 7.2 Drilling and sampling was supervised by Mr. Charles Boitard, the present owner of the claims. Samples were taken every three metres (ten feet). Samples were obtained by riffing the chips down to approximately five kilograms of sample. A grab of this material was then sent to Rossbacher Laboratory Ltd., in Burnaby B.C., for copper and silver analysis by AA. None of the samples were assayed for gold. Exact analytical procedures are listed in appendix III. The holes were logged by the author. Drill logs are included in appendix II.
- 7.3 Percussion drill hole 95-1 was drilled vertically to a depth of 122 metres. The hole intersected Nicola andesites for the entire length. The andesite exhibits weak propylitic alteration throughout. No significant sulphide mineralization was encountered. Copper values ranged from 10 to 265 ppm.

## 8. CONCLUSION AND RECOMMENDATIONS

- 8.1 The 1995 percussion drilling program failed to delineate any significant copper mineralization. It is recommended that all previous work be compiled on to one database and be reviewed by qualified personnel. In conjunction with the above, property scale geological mapping should be completed.

## 9. REFERENCES

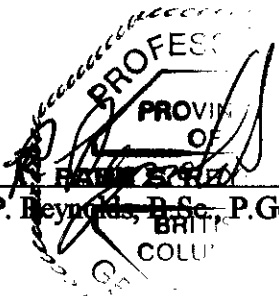
- Carr, J.M. and Reed, A.J. Afton: A Supergene Copper Deposit. Part of C.I.M., Special Volume 15: Porphyry Deposits of the Canadian Cordillera. 1976.
- Cockfield, W.E. Geology and Mineral Deposits of Nicola Map Area, British Columbia. Geological Survey of Canada, Memoir 249, 1961.
- La Rue, John P. Assessment Report on Geophysical Survey Conducted on the Dominic Group for Charles Boitard. October 5, 1991.
- Mark, David G. Geophysical - Geochemistry Report on Induced Polarization and Soil Sample Surveys over the Dominic Claim Group for Green Valley Mine Inc. March 20, 1979.
- Reynolds, Paul Percussion Drilling Report on the Dominic Mineral Claims, Kamloops Mining Division, B.C. British Columbia Assessment Report. November, 1994.

10. **CERTIFICATE**

I, Paul Reynolds, of the city of Vancouver in the province of British Columbia do hereby certify that:

- 1) I am a Professional Geoscientist registered with the Association of Professional Engineers and Geoscientists of British Columbia.
- 2) I am a graduate of the University of British Columbia with a B.Sc. degree in geology.
- 3) I have practiced my profession as exploration geologist since graduation in 1987.
- 4) This report is based on a review of previous reports and on the authors drill log of PDH 95-1.
- 5) I have no interest, directly or indirectly, in the Dominic property or in the securities of any company controlled by Mr. Charles Boitard, nor do I expect to receive any interest in the future.
- 6) Permission is hereby granted to Mr. Charles Boitard to use this report in support of any filing to be submitted to the Ministry of Energy, Mines and Petroleum Resources of the Province of British Columbia for the purpose of filing assessment on the Dominic mineral claims.

Dated this 9th day of November, 1995.

  
P. Reynolds, B.Sc., P. Geo.

REVISED 07 JUNE 96

**APPENDIX I**  
**STATEMENT OF COSTS**

**STATEMENT OF COSTS**

July 11 - 14, 1995

Percussion Drilling	122 metres @ \$30/metre	3,660
Truck rental & fuel		350
Transportation, supervision, room and board.		375
Assaying	40 samples @ \$12/sample	480
<u>Draughting and reporting</u>		<u>1,000</u>
<b>TOTAL</b>		<b>\$5,865</b>

**APPENDIX II**

**DRILL LOGS**



**APPENDIX III**  
**ANALYTICAL RESULTS**

# ROSSBACHER LABORATORY LTD.

2225 Springer Avenue  
Burnaby , B.C.  
Canada

## GEOCHEMICAL ANALYTICAL METHOD DESCRIPTIONS 1993

### A. SAMPLE PREPARATION

#### Soil and Silts :

Samples are dried and sifted to minus 80 mesh using nylon or stainless steel screens.

#### Rock samples :

Samples are dried, crushed to 1/8 inch , split , and pulverized to minus 100 mesh .

### B. METHOD OF ANALYSIS

#### Multi element Atomic Absorption :

0.5 gram of sample is digested with a 15:85 mixture of Nitric-Perchloric acid for four hours . The resulting extract is analyzed by Atomic Absorption Spectroscopy for any, or all of the following elements : Mo, Cu, Ni, Co, Mn, Fe, Ag, Zn, Pb, Cd, As.

#### ICP Emission Spectroscopy :

0.5 Gram of sample is digested with Aqua Regia, and the resulting extract analyzed for 30 elements .



# ROSSBACHER LABORATORY LTD.

## CERTIFICATE OF ANALYSIS

2225 Springer Ave., Burnaby,  
British Columbia, Can. V5B 3N1  
Ph:(604)299-6910 Fax:299-6252

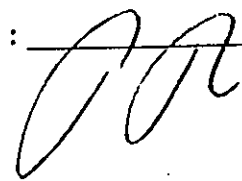
To : Green Valley Mining Ltd.  
2245 W 13TH AVE.,  
VANCOUVER, B.C.

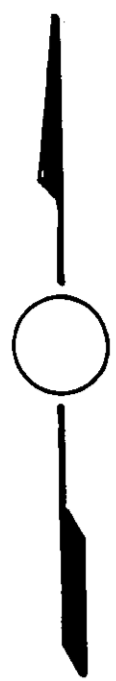
Project:  
Type of Analysis: ICP AA.

*DOMINIC*

Certificate: 95084  
Invoice: 50468  
Date Entered: 95-07-24  
File Name: MEN95084  
Page No.: 1

PRE FIX	SAMPLE NAME	PPM Cu	PPM Ag
A1	D 95-1 00-10	75	0.1
A1	D 95-1 10-20	56	0.1
A1	D 95-1 20-30	85	0.1
A1	D 95-1 30-40	90	0.1
A1	D 95-1 40-50	122	0.1
A1	D 95-1 50-60	57	0.1
A1	D 95-1 60-70	77	0.1
A1	D 95-1 70-80	55	0.1
A1	D 95-1 80-90	79	0.1
A1	D 95-1 90-100	106	0.2
A1	D 95-1 100-110	74	0.1
A1	D 95-1 110-120	76	0.1
A1	D 95-1 120-130	90	0.1
A1	D 95-1 130-140	104	0.2
A1	D 95-1 140-150	104	0.2
A1	D 95-1 150-160	84	0.1
A1	D 95-1 160-170	162	0.4
A1	D 95-1 170-180	265	0.4
A1	D 95-1 180-190	234	0.2
A1	D 95-1 190-200	115	0.1
A1	D 95-1 200-210	105	0.1
A1	D 95-1 210-220	89	0.1
A1	D 95-1 220-230	94	0.1
A1	D 95-1 230-240	64	0.1
A1	D 95-1 240-250	76	0.1
A1	D 95-1 250-260	50	0.1
A1	D 95-1 260-270	48	0.1
A1	D 95-1 270-280	10	0.1
A1	D 95-1 280-290	104	0.2
A1	D 95-1 290-300	86	0.1
A1	D 95-1 300-310	59	0.1
A1	D 95-1 310-320	58	0.1
A1	D 95-1 320-330	52	0.1
A1	D 95-1 330-340	54	0.1
A1	D 95-1 340-350	74	0.1
A1	D 95-1 350-360	100	0.1
A1	D 95-1 360-370	101	0.1
A1	D 95-1 370-380	116	0.1
A1	D 95-1 380-390	104	0.1
A1	D 95-1 390-400	80	0.1

CERTIFIED BY : 



700 W. 600 W. 500 W. 400 W. 300 W. 200 W. 100 W. BASE LINE 100 E. 200 E. 300 E. 400 E. 500 E. 600 E. 700 E. 800 E. 900 E. 1000 E. 1100 E.

900 N. 800 N. 700 N. 600 N. 500 N. 400 N. 300 N. 200 N. 100 N.

100 S. 200 S. 300 S. 400 S. 500 S. 600 S. 700 S. 800 S. 900 S. 1000 S. 1100 S. 1200 S. 1300 S. 1400 S. 1500 S. 1600 S. 1700 S. 1800 S.

DURAND CREEK

Junction To TUNKWALAKE Road 7.3 Km. Then 15.7 Km. To LOGAN LAKE Road

FOX # 5

FOX # 4

FOX # 3

FOX # 2 L.C.P.

YELLOW LINE N. 100° E.

INT.

P.H. 80-6  
P.H. 80-5  
P.H. 80-4  
P.H. 80-7

P.H. 80-8

D.D.H. 84-1

D.D.H. 89-1

P.H. 88-1

P.H. 88-4  
P.H. 88-2

P.H. 88-3

P.H. 84-1  
P.H. 84-2  
P.H. 84-3

P.H. 80-2  
P.H. 80-1

P.H. 80-3

GEOLOGICAL SURVEY BRANCH  
ASSESSMENT REPORT

24,134

CHARTRAND CREEK

120° 43'

2500 W. 2400 W. 2300 W. 2200 W. 2100 W. 2000 W. 1900 W. 1800 W. 1700 W. 1600 W. 1500 W. 1400 W. 1300 W. 1200 W. 1100 W. 1000 W. 900 W. 800 W. 700 W. 600 W. 500 W. 400 W. 300 W. 200 W. 100 W.

LEGEND

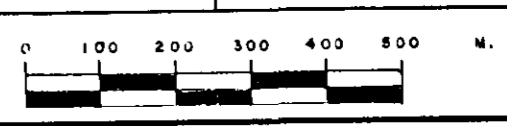
- ⊙ PERCUSSION DRILL HOLES
- ⊙ DIAMOND DRILL HOLES
- - - - ROADS
- ..... SWAMP

DOMINIC GROUP

KAMLOOPS M. D.

DRILL HOLE LOCATION

SCALE 1:10 000 DATE SPT. 1995 N.T.S. 92 1 / 10 E FIG.



1