

RECEIVED

JAN 29 1996

**Gold Commissioner's Office
VANCOUVER, B.C.**

**GEOLOGICAL SURVEY BRANCH
ASSESSMENT REPORTS**

DATE RECEIVED

FEB 07 1996

**DIAMOND DRILLING REPORT
WELCOME PROPERTY
FORT STEELE MINING DIVISION
NTS#82F/15E
LAT.: 49°45'N; LONG.: 116°31'E**

**FOR: ABITIBI MINING CORP.
1000 - 675 WEST HASTINGS STREET
VANCOUVER, B.C. V6B 1N2**

**BY: G.M. RODGERS, P.ENG.
P.O. BOX 63
SKOOKUMCHUCK B.C. V0B 2E0**

FILMED

**GEOLOGICAL BRANCH
ASSESSMENT REPORT**

JANUARY 1996

24,268

SUMMARY

TABLE OF CONTENTS

1.0 INTRODUCTION

1.1 Location & Access 1
 Fig. 1 (Index Map) 2a
1.2 Physiography 1
1.3 Property 1
 Fig. 2 (Claim Map) 2b
1.4 History 4

2.0 DIAMOND DRILLING 5

2.1 Diamond Drill Logs 6

3.0 RESULTS & CONCLUSIONS 10

STATEMENT OF COSTS 10

STATEMENT OF QUALIFICATIONS 12

FIG. 3, Drill Hole Location Map (scale=1:20,000) 13

1.0 INTRODUCTION

1.1 Location and Access

The property is located approximately 65 kilometers northwest of Cranbrook, B.C.. The Welcome crown granted claim has been kept in good standing since 1898. It has at times been mis-plotted on the government claim maps but its present location is correct, lying 1 kilometer southeast of the junction of the west fork of the St. Mary River with Office Creek (Lat. $49^{\circ} 45' N$, Long. $116^{\circ} 27' E$).

Access is via paved road which departs the Cranbrook - Kimberley highway at Marysville for 10 kilometers to St. Mary Lake and then by gravel road for 25 kilometers west to the property boundary.

1.2 Physiography

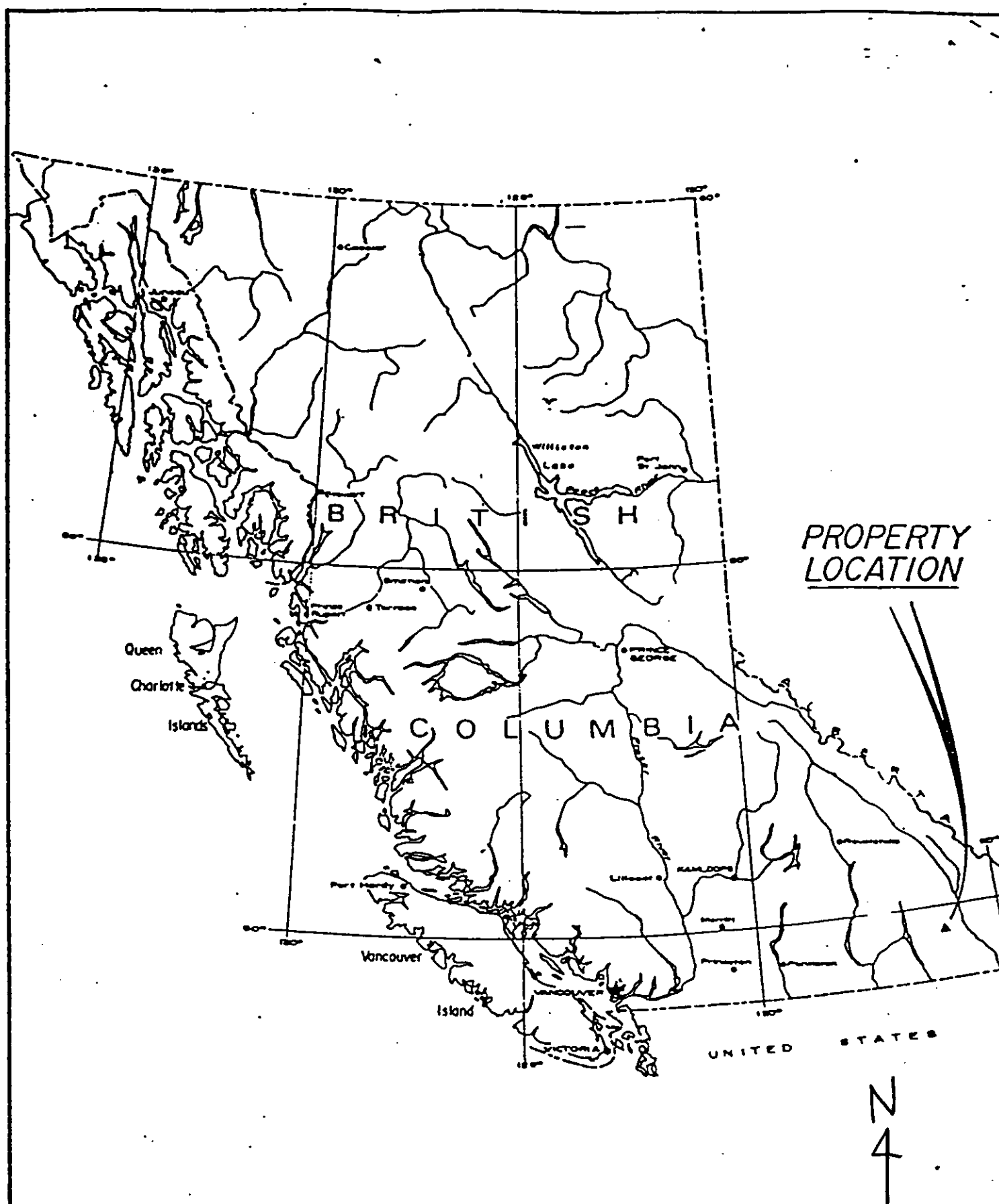
The claim area is covered with mature cedar-hemlock-fir forest cover and slide alder. The claim is located just south of the St. Mary River bottom land on a steep (20° - 40°) north-facing slope. Old workings on both sides of the river are found between 1300m and 1900m elevation.

Snowfall is moderate (1.5 - 3.0 meters) and the main access road is usually not ploughed in winter beyond St. Mary Lake.

1.3 PROPERTY

The Welcome mineral claim was originally surveyed in August of 1897 by T.T. McVittie and was registered in Fort Steele by G. Urquhart as record number 1389. It comprises 51.58 acres and has been held in good standing since that time. It is presently held as a crown granted mineral claim with Grace Cruichshank, Linda Urquhart, Nora Cizik, Jenny Gates and Hughes Lang Corporation as registered owners.

Annual rental fees are due July 2, 1994.



PROPERTY LOCATION

Figure 1

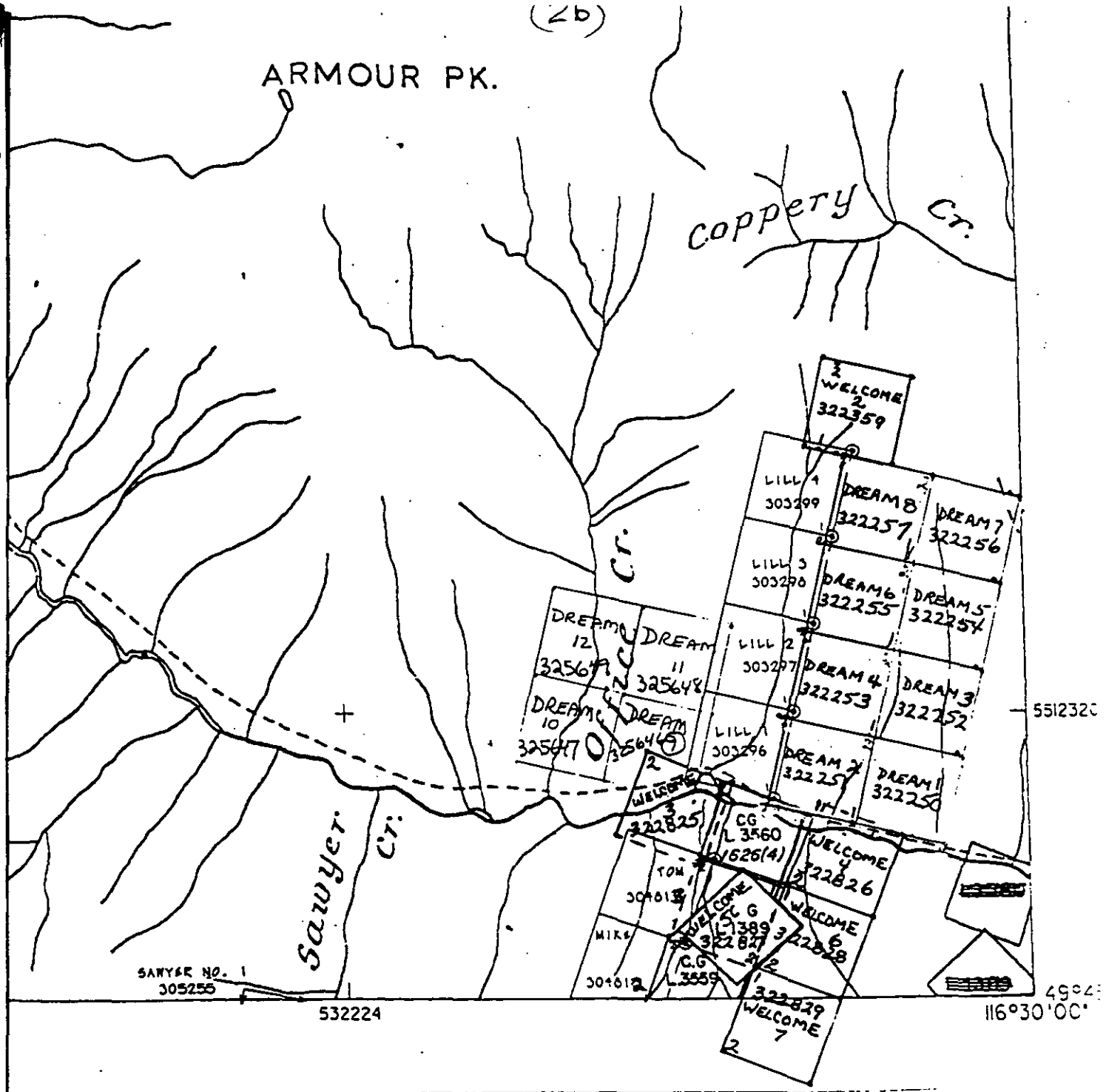
LOCATION MAP

SCALE
Km. 100 50 0 100 200 300 400 Km.

(2b)

ARMOUR PK.

Copperty Ct.



SANYER NO. 1
305255

532224

5512320

49°41'
116°30'00"

A
N
N

FIG. 2
CLAIM MAP

SCALE = 31,680

1.3 Continued . . .

Other claims within the Welcome group are listed below:

<u>Claim Name</u>	<u># of units</u>	<u>Record #</u>	<u>Current Expiry Date</u>
Lill 1	1	303296	Aug. 21, 1999
" 2	1	303297	" "
" 3	1	303298	" "
" 4	1	303299	" "
Surprize	1	209909	Apr. 13, 1999
Welcome2	1	322359	Oct. 23, 1998
" 3	1	322825	Dec. 2, 1998
" 4	1	322826	" " "
" 5	1	322827	Dec. 3, 1998
" 6	1	322828	" "
" 7	1	322829	" "
Dream 1	1	322250	Oct. 29, 1996
" 2	1	322251	" 1998
" 3	1	322252	Nov. 6, 1996
" 4	1	322253	" 1998
" 5	1	322254	" 1996
" 6	1	322255	" 1998
" 7	1	322256	Nov. 7, 1996
" 8	1	322257	" 1998
Tom	1	304813	OCT. 3, 2000
Mike	1	304812	OCT. 3, 2000
Shrewsbury	1	209874	Apr. 13, 1999
Dream 9	1	325646	May. 25, 1999
" 10	1	325647	" "
" 11	1	325648	" "
" 12	1	325649	" "

Being a total of 28 two post mineral claims in the Fort Steele M.D..

1.4 History

Property history pre-1966 has not been documented. It is known that before the 1950's several adits and old trenches were put in. At least 5 old adits are known of on the south side of the river and 2 old adits exist on the north side of the river.

During 1966, the Consolidated Mining and Smelting Company (Cominco) drilled 6 diamond drill holes, all on the north side of the St. Mary River. Hole #1A intersected 15.5 ft. (4.7m) of 3.5% Cu, 7 ft. (2.1m) of 2.8% Cu and 3.5 ft. (1.1m) of 6.5% Cu. Hole #3 intersected 8.5 ft. (2.6m) of 1.1% Cu and 5 ft. (1.5m) of 2.1% Cu. Mineralization consisted chiefly of chalcopyrite which was found concentrated in the noses of tight isoclinal folds and as bands within quartzite units.

During 1967, Pharaoh Mines Ltd. conducted bulldozer trenching and drilled 4 percussion holes 30 - 40 ft. long, again on the north side of the St. Mary River.

During the late 1960's Newmont Mines Ltd. and Rio Tinto examined the property and at least four diamond drill holes were drilled near the south boundary of the Welcome claim into the "Creek Showing". Drill core from this drilling is still stored on site and is in disarray.

During 1973/1974, F. Holcapek, P. Eng. conducted mapping, sampling and an E.M. survey for Cream Silver Mines and then for Meridian Resources Ltd..

During 1985, prospector D. Jackson drilled a 30 ft. "packsack" drill hole at 4300 ft. elevation on the north side of the river.

2.0 DIAMOND DRILLING

A total of 306.3m (1005 ft) of NQ core was drilled during October, 1995 in four holes. All core is stored at the residence of the Author. Au drilling was done by Lone Ranger Diamond Drilling Ltd.

The target in all cases was either a magnetometer/VLF anomaly or a projection of a known mineralized shear zone.

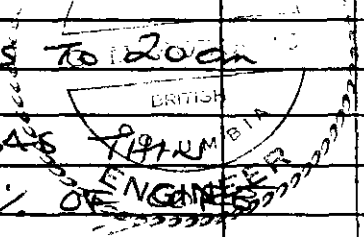
The following table summarizes the drilling: (see Fig. 3 for drill collar locations)

Hole No.	Bearing	DIP	Total Depth	
			Meters	Feet
W95-1	AZ110°	-60°	108.5 m	356 ft
W95-2	AZ110°	-60°	45.4 m	149 ft
W95-3	AZ300°	-55°	76.2 m	250 ft
W95-4	AZ090°	-60°	<u>76.2 m</u>	<u>250 ft</u>
			306.3 m	1,005 ft

DISTRICT WELLSVILLE HOLE NO. 45-1
 Location (SEE FIG. 3) Tests at _____ Hor. Comp. _____
 Core Size NQ Corr. Dip -60° Vert. Comp. _____
 True Brg. AZ 110 Logged by G. RODGER
 Objective TEST MAG / VLF ANOMALY % Recov. 98% Date JAN. '96

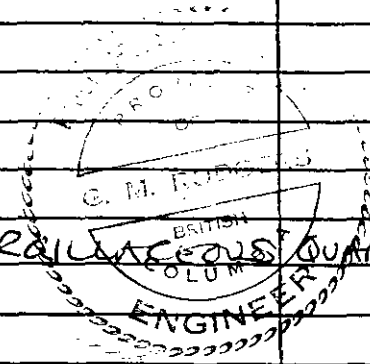
Stage	Description	Sample No.	Le
From	To		
0	61m QA OVER BURDEN		
61 - 65.5	GREY-GREEN-WHITE QUARTZ SERICITE SCHIST $\angle 60^\circ @ 14m$ - OCCASIONALLY KINK BANDED, OCC. SMALL & LARGE SCALE $\angle 70^\circ @ 20m$ FOLDING, INTENSELY FOLIATED EG.: LARGE FOLD NOSES AT; 29-30m, 44-46m, 53-57. $\angle 60^\circ @ 27m$ - OCCASIONAL QUARTZ VEINS PARALLEL TO BEDDING WITH $\angle 60^\circ @ 33.5m$ COARSE GRAINED GARNET $\angle 60^\circ @ 41.5m$ 27.7-34.0 - ABUNDANT PINK GARNET $\angle 40^\circ @ 45m$ TR. Py & Po THROUGHOUT		
65.5 - 108.5	DEFORMED GREY-SILVER GREY SERICITIC SCHIST (OCCASIONALLY GRAPHITIC). INTENSE FOLDING & LARGE QUARTZ BOUNDINAGE / $\angle 60^\circ @ 50m$ KNOTS TO MASSIVE CHLORITE KNOTS - QUARTZ & CHLORITE COMMON AS LARGE KNOTS TO 20cm $\angle 45^\circ @ 52.5m$ - GARNET " (ERRATIC) 92.7-104.5 - OCCASIONAL PYRITE & CHALCOPYRITE AS FRACTURE FILINGS & DISSEMINATIONS. (25% OF BELOW 90m.		
	108.5 = END OF HOLE		

(NO SAMPLES TAKEN)



Commenced	WELCOME	District	FORT STEELE	Hole No.	75-2
Completed		Location	(SEE FIG. 3)	Tests at	
Coordinates		Core Size	NQ	Corr. Dip	-60°
Objective	TEST MAG / VLF ANOMALY	True Brg.	AZ 110°	Logged by	G. RODGERS
		% Recov.	98%	Date	JAN '96

Stage	Description	Sample No.	Le
m	To		
0 - 9.1	c/a OVER BURDEN 55° @ 11.4		
9.1 - 26.2	CHLORITIC & ARGILLACEOUS QUARTZITE - MINOR GARNET, SIDERITE 70° @ 20.0		
26.2 - 45.4	WHITE, CLEAN, NATROLITIC (VFA) QUARTZITE - OCCASIONAL Py & SERICITE - H.W. CONTACT = 30° - F.W. " " = 30° (BASE OF DUTCH CREEK?) - OCCASIONALLY FRECKLED WITH BIOTITE ALTERING TO CHLORITE. - RARE SIDERITE 43.6 - 43.9 - CHLORITIC SCHISTOSE BED 44.2 - 44.5 - " " " " 43.9 - VUGGY WITH CG. Py - OCCASIONAL FRACTURES FILLED WITH ARGILLACEOUS QUARTZITE.		
	45.4 = END OF HOLE (NO SAMPLES TAKEN)		



Drill Hole Record

Property WELCOME District FORT STEELE Hole No. 95-3
 Commenced Location (SEE PG. 3) Tests at _____ Hor. Comp. _____
 Completed Core Size NQ Corr. Dip -55° Vert. Comp. _____
 Coordinates True Brg. A2300° Logged by GIRDERS
 Objective TEST MAG/VLF ANOMALY % Recov. 99% Date JAN '96

Stage	Description	Sample No.	Length
From	To		
0 - 33.5	C/A OVERBURDEN		
33.5 - 76.2	GREEN - GREY - BLACK ARGILLACEOUS SCHIST - INTENSELY FOLIATED & SHEARED. KINK BANDING THROUGHOUT STRONGLY BIOTIZED (BIOTITE AS COARSE BLEBS/MATTED CRYSTAL AGGREGATES) 35.0 - 37.5 ; 1-2% Py & Po ON FRACTURES AND AS THIN WISPS AND DISSEMINATIONS PARALLEL TO BEDDING TR CPy & TR. PINK MINERAL (UNIDENTIFIED) (PROBABLY MANGANESE OR POSSIBLY COBALT) - LOCAL SECTIONS OF INTENSE FOLDING WITH SUCCESSIVE SLIP - 51.7 - 51.9 WHITE QUARTZ PARALLEL TO BEDDING (MINOR Py, Po & CHLORITE) - FOOTWALL CONTACT = 55° CORE ANGLE. - 55.8 - 55.9 - WHITE QUARTZ ; MINOR Py, Po & CHLORITE. - HANGING WALL CONTACT = 75° 76.2 = END OF HOLE (NOT SAMPLED)		

Drill Hole Record

Property	WELCOME	District	FORT STEELE	Hole No.	95-4
Commenced		Location	(SEE FIG. 3)	Tests at	Hor. Comp.
Completed		Core Size	NQ	Corr. Dip	-60° Vert. Comp.
Coordinates				True Brg.	A2090
Objective	TEST MAG/VLF ANOMALY			% Recov.	98%
					Logged by G. RODAS
					Date JAN '96

Stage From	To	Description	Sample No.	Length
0	34	CA OVERBURDEN		
34	76.2	GRAY-GREEN-WHITE-SILVER GREY SCHIST -SL. LIMY THROUGHOUT -INTENSELY SHEARED & KINK BANDED THROUGHOUT -OCCASIONAL QUARTZ KNOTS AND CROSS CUTTING QUARTZ VEINS AS NOTED 34-40; GREEN CHLORITIC SCHIST WITH SIDERITE AND MINOR V. THIN BEDDED PHYLLITIC QUARTZITE. 38.85-39.0; BEDDING PLANE PARALLEL QUARTZ - OCCASIONALLY GRAPHITIC - " " BIOTITE RICH - V. CONVOLUTED; SUSPECT RECUMBANT FOLDING 46m - (10cm SHEAR @ FOLIATION PARALLEL TO CONTACT)		
		50° @ 38m		
		40° @ 42m		
		48° @ 48m		
		30° @ 52m		
		30° @ 56m		
		05° @ 56.5m		
		30° @ 57m		
		20° @ 58m		
		42° @ 60m		
		50° @ 61m		
		70° @ 66m		
		40° @ 70m		
		50° @ 73.5m		
		0° @ 74m		
		76.2 = END OF HOLE (NOT SAMPLED)		
		70° @ 75-76		

G. M. RODAS
 BRITISH
 LARGE SCALE
 ENGINEER

3.0 RESULTS & CONCLUSIONS

Drill holes #W95-1 & #W95-3 intersected extremely sheared folded and kinked sediments. Mineralization consists of minor disseminated pyrite and rare chalcopyrite.

Drill holes #W95-2 & #W95-4 intersected sediments that were only moderately sheared and folded. Drill hole #W95-2 went through a lithological contact into a very clean, natrolitic white quartzite and bottomed in this quartzite unit.

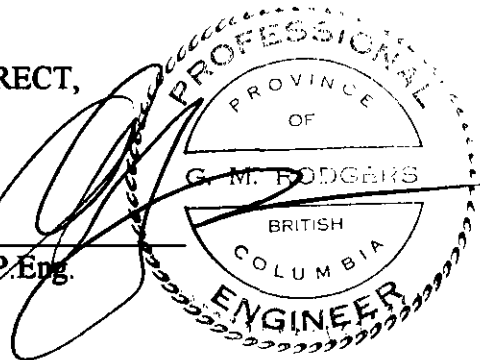
No samples were taken for assay.

Statement of Costs

Diamond Drilling (Lone Ranger Diamond Drilling)	\$17,000
Supervision, Logging & Report	<u>1,500</u>
Total	<u>\$18,500</u>

CERTIFIED CORRECT,

Glen M. Rodgers, P.Eng.



STATEMENT of QUALIFICATIONS

I, Glen M. Rodgers of Skookumchuck, B.C., hereby certify as follows:

1. I am a consulting Geological Engineer presently registered with the Association of Professional Engineers and Geoscientists of British Columbia.

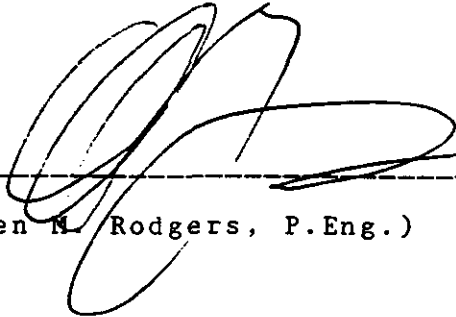
2. I graduated from the University of Manitoba in 1977 with a bachelor's degree in Geological Engineering.

3. Since graduation, I have practised my profession continuously in Western Canada, Yukon Territory, Alaska and Central America working primarily in the field of mineral exploration.

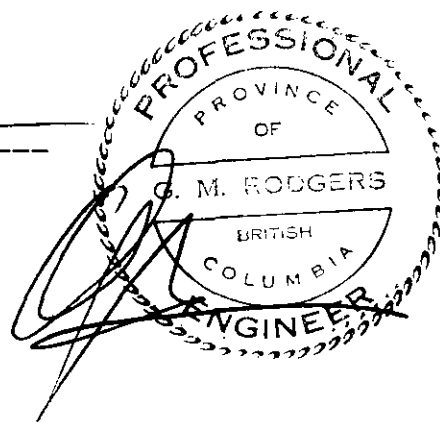
4. I have based this report on work done by myself and others during September / October, 1995, on the Welcome Claim Group.

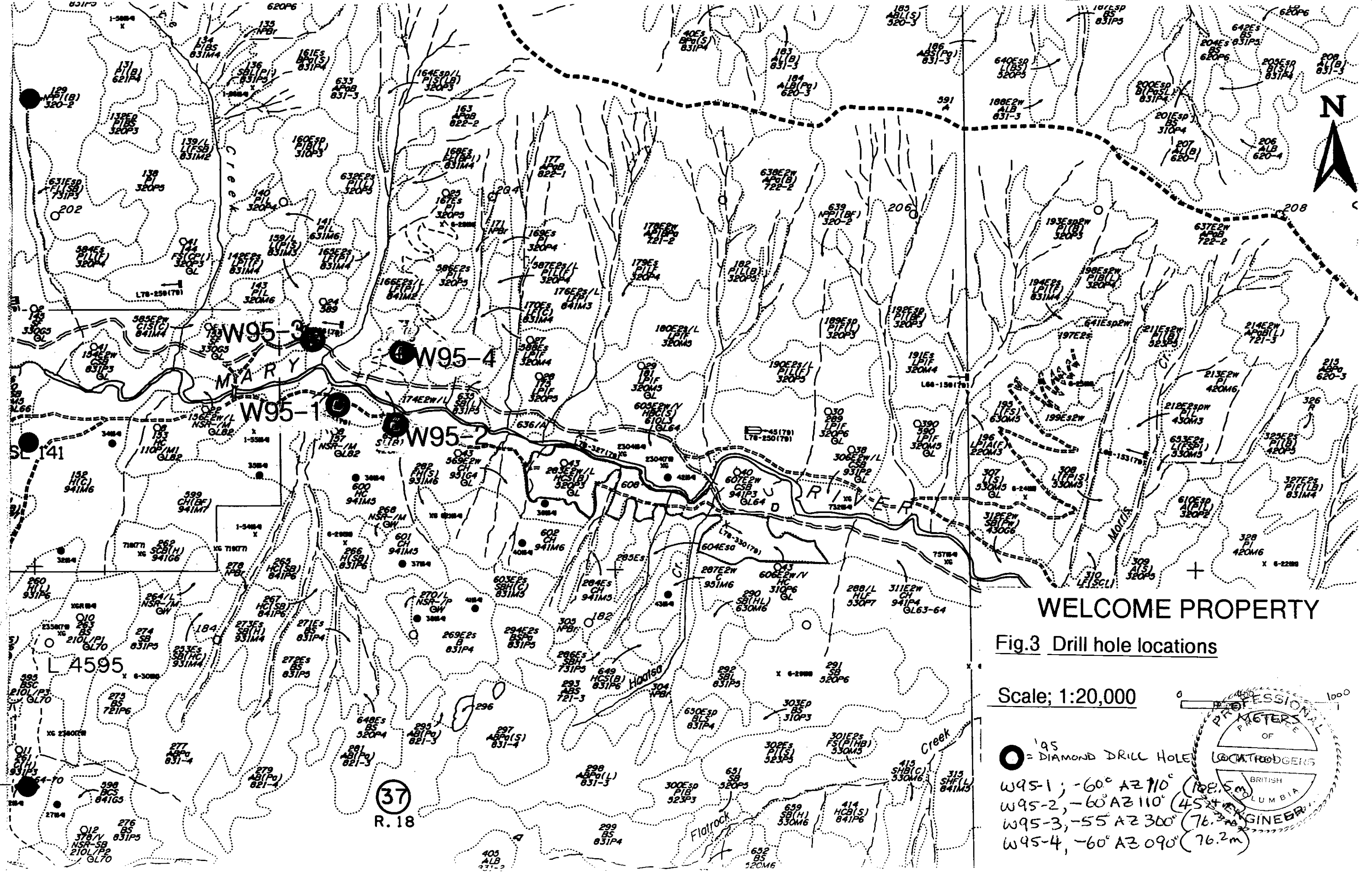
5. I hold approximately 90,000 shares of Otis J. Exploration Corp. which I both purchased at market value and also received as consideration for four different property vendings including an interest in the claims mentioned above. I do not expect to receive any shares as a result of writing this report.

-dated this 24th day of December 1995, Cranbrook, British Columbia



(Glen M. Rodgers, P.Eng.)

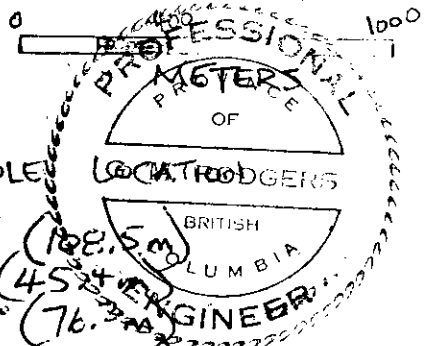




WELCOME PROPERTY

Fig.3 Drill hole locations

Scale; 1:20,000



- = DIAMOND DRILL HOLE
- W95-1; $-60^{\circ} A Z 110^{\circ}$ (76.5m)
- W95-2; $-60^{\circ} A Z 110^{\circ}$ (45.4m)
- W95-3; $-55^{\circ} A Z 300^{\circ}$ (76.3m)
- W95-4; $-60^{\circ} A Z 090^{\circ}$ (76.2m)

37
R. 18