

GEOLOGICAL SURVEY BRANCH
ASSESSMENT REPORTS

DATE RECEIVED

FEB 16 1996

JUN 25 1996

MAY 22 1996

Amended

Geochemical Report
VELVET CLAIMS

(Lat. 49 degrees, 24 minutes, 30 sec)

(Long. 116 degrees, 00 minutes)

NTS# 82 G 5

Fort Steele Mining Division

Report by: G. M. Rodgers P. Eng.

P. O. Box 63,

Skookumchuck, B. C.

VOB 2E0

For: A. J. Whaley

SS 1, Site 13, Box 127

Cranbrook, B. C.

VIC 4H4

February 7, 1996

FILMED

GEOLOGICAL BRANCH
ASSESSMENT REPORT

24,293

TABLE OF CONTENTS

SUMMARY		(i)
1.0	Introduction	Page 1
	Location and access	
	Claim status	
Fig 1	Index map	Page 2
Fig 2	Claim map	Page 3
2.0	Geochemistry	Page 4
3.0	Results and conclusions	Page 4
3.1	Sample location map	Page 5
3.2	Assay certificates	Page 6(a-f)
3.3	Statement of costs	Page 7
3.4	Statement of qualifications	Page 8

(i)

SUMMARY

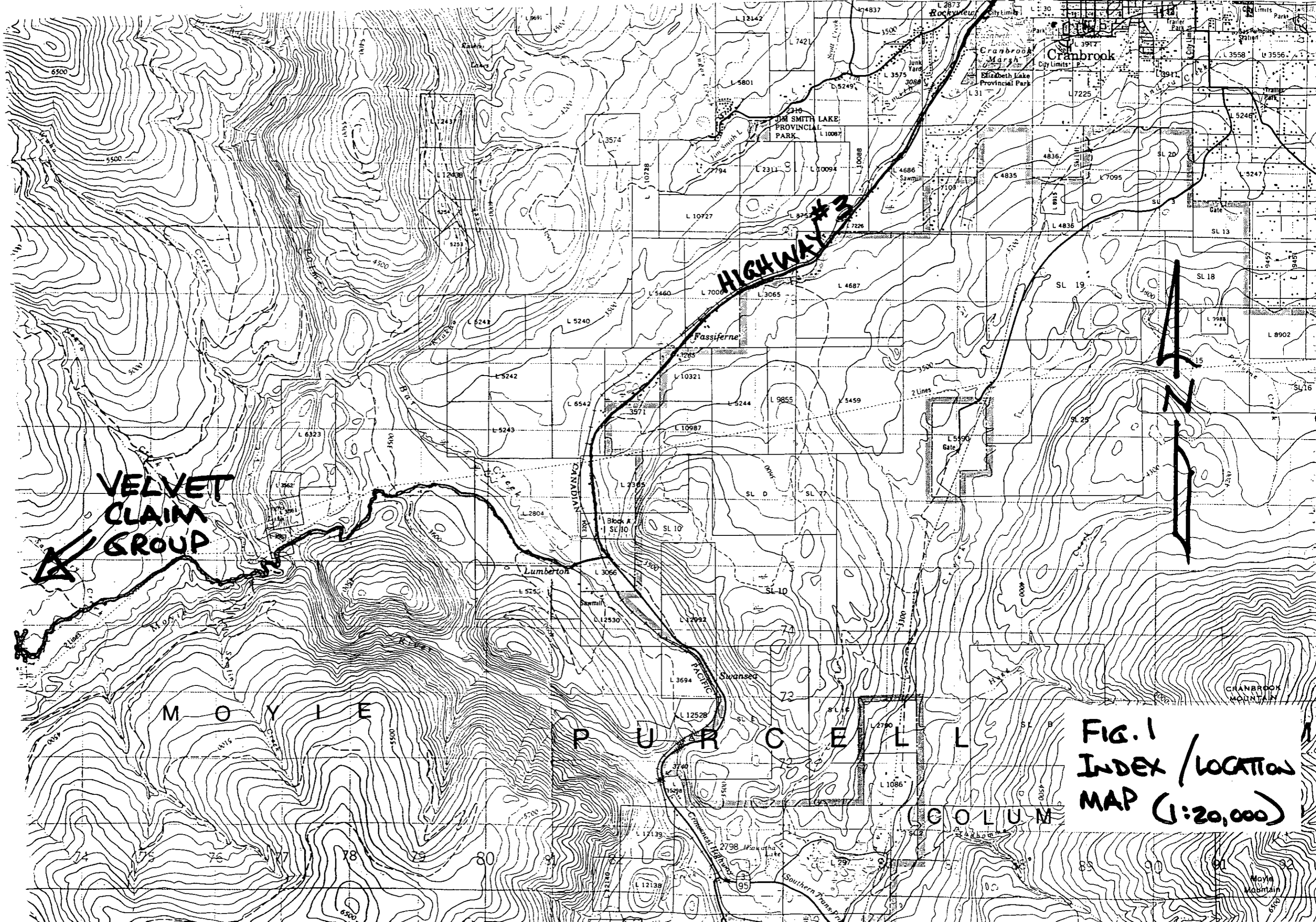
A total of 288 soil samples and 4 rock samples were collected from "B" horizon soils between 5 and 30 cm depth. Samples were tested for PPB Au by Chemex Labs and also for PPM Hg using a gold film mercury detector. Four soil samples were anomalous in gold.

The Jeannette group of claims consisting of the Velvet 11--18 is situated about 30 kilometers south of Cranbrook on the Moyie River Forest road at approximately the 4 and 5 kilometer signs. Access is by excellent gravel road which leaves Highway 3 at Lumberton.

There is no history associated with these claims.

The claim group consists of eight two-post claims with tenure details as follows:

Claim name	Tenure number	Expiry date
Velvet 11	332642	Nov. 14, 1999
Velvet 12	332643	Nov. 14, 1999
Velvet 13	334922	April 18, 2000
Velvet 14	334923	April 18, 2000
Velvet 15	334924	April 18, 2000
Velvet 16	334925	April 18, 2000
Velvet 17	334926	April 20, 2000
Velvet 18	334927	April 20, 2000



VELVET CLAIM GROUP

HIGHWAY #3

M O Y L E P U R C E L L C O L U M

FIG. 1
INDEX / LOCATION
MAP (1:20,000)

OLD BALDY MTN.

DUKE FIG 2

2AU 11	2AU 12
340759	340760
2AU 13	2AU 14
340761	340762

WEAVER 2
331129

WEAVER 1
331128

THEA TWO
334156
SNXSW

VELVET 6	335223
VELVET 3	335196
VELVET 1	335194
VELVET 7	54743
VELVET 9	332636
VELVET 9	332640

L
3773
210256
2706°
3772 A
210255
Nov. C.

KEN 2
•1145°
209820

KEN 4
•1147°
209822

KEN 6
•1149°
209827

KEN 8
•1151°
209828

KEN 5
•1140°
209823

KEN 7
•1150°
209825

KEN 3
•1146°
209821

Nov. L.C.
3774
210257
2706°

WEAVER 4
331131

WEAVER 3
331130

VELVET 14	334925
VELVET 13	334922
VELVET 11	332642
VELVET 15	334924
VELVET 16	334925
VELVET 17	334926

MOYIE 25
337728

MOYIE 26
337729

MOYIE 11
337748
3N 5E

MOYIE 1
337735
2N 4W

MOYIE 2
337736
2N 4E

MOYIE 4
337738
4S 5E

COBBY 8	337453
COBBY 10	337455
COBBY 9	337451
COBBY 7	337452
COBBY 5	335822
COBBY 3	335820

BINGO 1
317360
56X4W

MOYIE 14
337727

BINGO 2
332409

BINGO 3
332490

MOYIE 3
337737

FIG. 2
CLAIM MAP
1:31,680
82F8W

82F8E

In all, 288 soil samples were collected from the "B" horizon mostly at 10 meter intervals.

75 of these plus 4 rocks were tested for gold by Chemex Labs using FA-AAS

All 288 samples were tested for mobile mercury by "This Ol' Creek Mining Inc." using the following procedure:

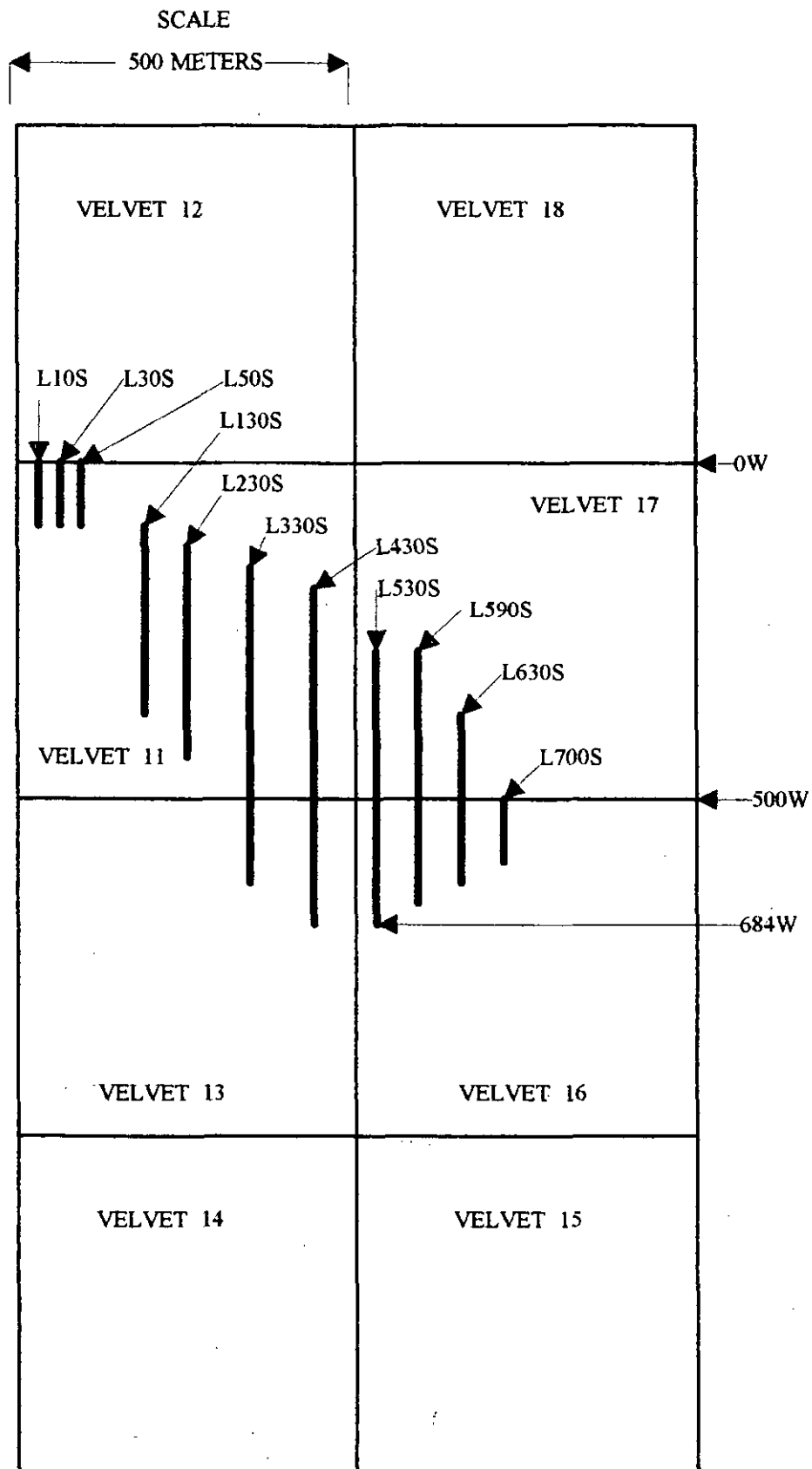
Samples are dried at room temperature, then a portion is cooked at 125 degrees C for three minutes. The fumes are drawn off by a vacuum pump into the test equipment after which the amount of mobile mercury is measured digitally in parts per billion. The test equipment is: Gold Film Mercury Detector, Model 301, manufactured by Jerome Instrument Corp., Jerome, Arizona.

3.0

RESULTS AND CONCLUSIONS

4 samples were anomalous in gold. A number of mobile mercury anomalies were found. Further work is recommended.

MERCURY SAMPLE LOCATIONS -- VELVET 11-18 ← N

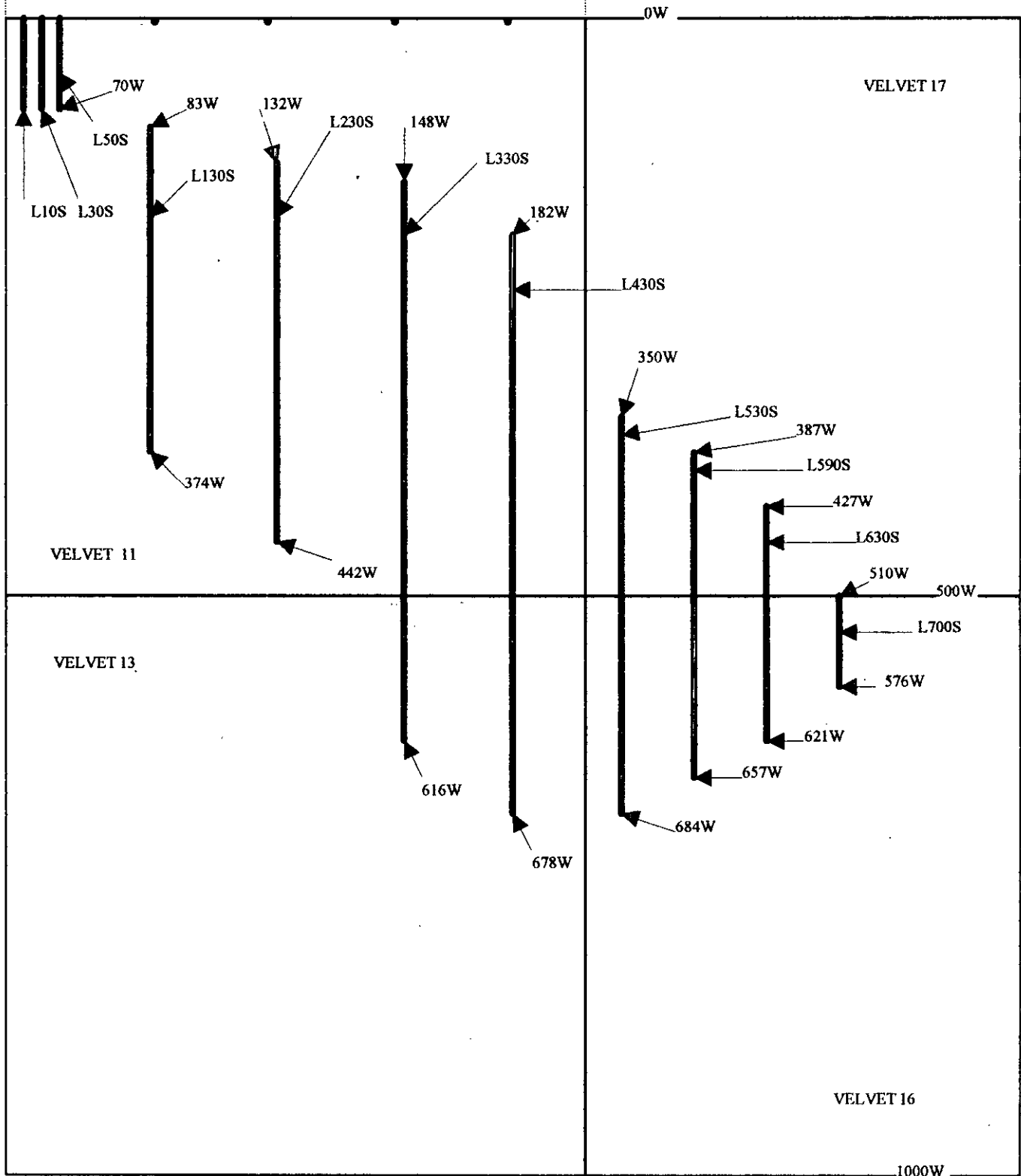


MERCURY SAMPLE LOCATIONS -- VELVET 11-13-16-17



SCALE 1:5000

500 METERS



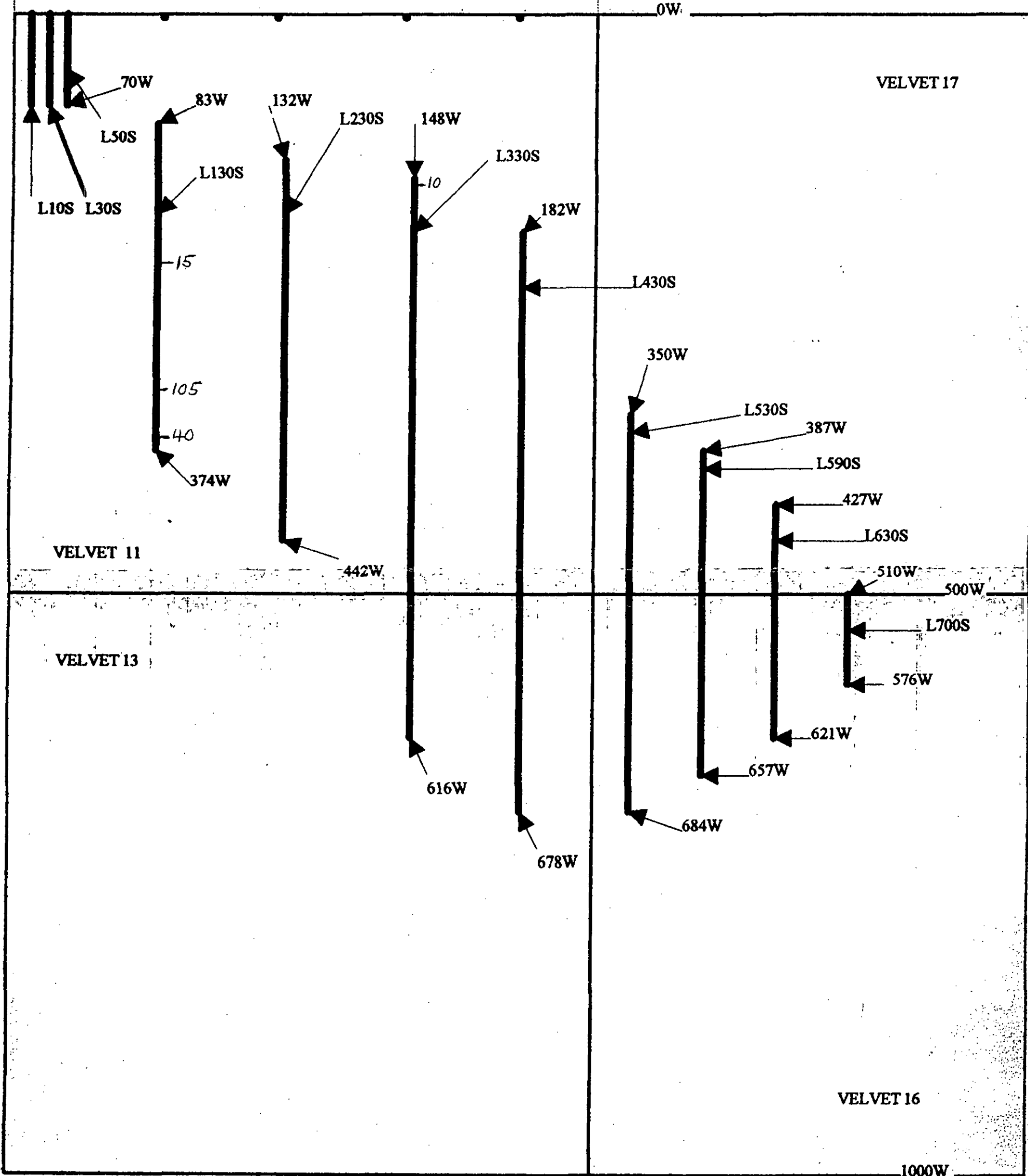
MERCURY SAMPLE LOCATIONS -- VELVET 11-13-16-17



SCALE 1:5000

AU-PPB
L 130S + L 330S

500 METERS





Chemex Labs Ltd.

Analytical Chemists * Geochemists * Registered Assayers

212 Brooksbank Ave., North Vancouver
British Columbia, Canada V7J 2C1
PHONE: 604-984-0221 FAX: 604-984-0218

To: WHALEY, ALLEN

S.S.1, SITE 13, BOX 127
CRANBROOK, BC
V1C 4H4

Project :

Comments: ATTN: ALLEN WHALEY

Page Number : 1
Total Pages : 1
Certificate Date: 15-MAY-95
Invoice No. : 19517095
P.O. Number :
Account : MRH

CERTIFICATE OF ANALYSIS

A9517095

SAMPLE	PREP CODE		Au ppb RUSH									
ROCK #1	255	295	< 5									
ROCK #2	255	295	< 5									
L3308-322W	255	295	< 5									
L3308-548W	255	295	< 5									

CERTIFICATION:

Handwritten signature



Chemex Labs Ltd.

Analytical Chemists * Geochemists * Registered Assayers

212 Brooksbank Ave., North Vancouver
British Columbia, Canada V7J 2C1
PHONE: 604-984-0221 FAX: 604-984-0218

To: ALLEN, WHALEY

S.S.1, SITE 13, BOX 127
CRANBROOK, BC
V1C 4H4

Project:

Comments: ATTN: ALLEN WHALEY

Page Number : 2
Total Pages : 2
Certificate Date: 14-MAY-95
Invoice No. : 19517094
P.O. Number :
Account : MRH

CERTIFICATE OF ANALYSIS

A9517094

SAMPLE	PREP CODE	Au ppb RUSH									
L330S-268W	241 --	< 5									
L330S-272W	241 --	< 5									
L330S-282W	241 --	< 5									
L330S-292W	241 --	< 5									
L330S-302W	241 --	< 5									
L330S-312W	241 --	< 5									
L330S-322W	241 --	< 5									
L330S-332W	241 --	< 5									
L330S-342W	241 --	< 5									
L330S-352W	241 --	< 5									
L330S-362W	241 --	< 5									
L330S-372W	241 --	< 5									
L330S-382W	241 --	< 5									
L330S-392W	241 --	< 5									
L330S-402W	241 --	< 5									
L330S-412W	241 --	< 5									
L330S-424W	241 --	< 5									
L330S-428W	241 --	< 5									
L330S-474W	241 --	< 5									
L330S-478W	241 --	< 5									
L330S-488W	241 --	< 5									
L330S-498W	241 --	< 5									
L330S-508W	241 --	< 5									
L330S-518W	241 --	< 5									
L330S-528W	241 --	< 5									
L330S-538W	241 --	< 5									
L330S-548W	241 --	< 5									
L330S-558W	241 --	< 5									
L330S-568W	241 --	< 5									
L330S-578W	241 --	< 5									
L330S-588W	241 --	< 5									
L330S-598W	241 --	< 5									
L330S-608W	241 --	< 5									
L330S-613W	241 --	< 5									
L330S-616W	241 --	< 5									

CERTIFICATION:

Allen Whaley



Chemex Labs Ltd.

Analytical Chemists * Geochemists * Registered Assayers
212 Brooksbank Ave., North Vancouver
British Columbia, Canada V7J 2C1
PHONE: 604-984-0221 FAX: 604-984-0218

To: ALLEN, WHALEY

S.S.1, SITE 13, BOX 127
CRANBROOK, BC
V1C 4H4

Project:
Comments: ATTN: ALLEN WHALEY

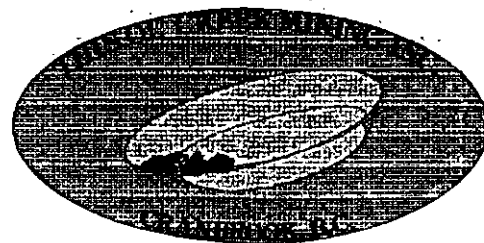
Page Number :1
Total Pages :2
Certificate Date: 14-MAY-95
Invoice No. :19517094
P.O. Number :
Account :MRH

CERTIFICATE OF ANALYSIS A9517094

SAMPLE	PREP CODE	Au ppb RUSH											
L130S-000W	241 --	< 5											
L130S-083W	241 --	< 5											
L130S-087W	241 --	< 5											
L130S-094W	241 --	< 5											
L130S-098W	241 --	< 5											
L130S-169W	241 --	< 5											
L130S-173W	241 --	< 5											
L130S-183W	241 --	< 5											
L130S-193W	241 --	< 5											
L130S-203W	241 --	15											
L130S-213W	241 --	< 5											
L130S-223W	241 --	< 5											
L130S-233W	241 --	< 5											
L130S-243W	241 --	< 5											
L130S-253W	241 --	< 5											
L130S-260W	241 --	< 5											
L130S-264W	241 --	< 5											
L130S-272W	241 --	< 5											
L130S-276W	241 --	< 5											
L130S-286W	241 --	< 5											
L130S-296W	241 --	< 5											
L130S-306W	241 --	< 5											
L130S-316W	241 --	< 5											
L130S-326W	241 --	< 5											
L130S-336W	241 --	105											
L130S-346W	241 --	< 5											
L130S-356W	241 --	< 5											
L130S-366W	241 --	40											
L130S-370W	241 --	< 5											
L130S-374W	241 --	< 5											
L330S-000W	241 --	< 5											
L330S-148W	241 --	< 5											
L330S-152W	241 --	10											
L330S-162W	241 --	< 5											
L330S-172W	241 --	< 5											
L330S-182W	241 --	< 5											
L330S-192W	241 --	< 5											
L330S-202W	241 --	< 5											
L330S-211W	241 --	< 5											
L330S-215W	241 --	< 5											

CERTIFICATION: *Theresa Vank*

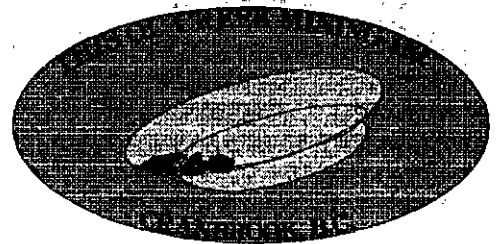
THIS OL' CREEK MINING INC.
SS 1, SITE 13, BOX 127
CRANBROOK, B.C.
VIC 4H4
604 426 2064



MOBILE MERCURY TEST RESULTS (ppb)

Velvet			L50S	60W	4	L130S	370W	21	L230S	390W	18
L10S	0W	21	L50S	64W	4	L130S	374W	27	L230S	400W	21
L10S	10W	7							L230S	410W	17
L10S	20W	9	L130S	0W	26	L230S	0W	14	L230S	420W	19
L10S	30W	15	L130S	83W	23	L230S	132W	29	L230S	430W	17
L10S	40W	13	L130S	87W	29	L230S	136W	32	L230S	438W	17
L10S	50W	22	L130S	94W	16	L230S	146W	10	L230S	442W	13
L10S	60W	10	L130S	98W	12	L230S	156W	9			
L10S	65W	2	L130S	169W	9	L230S	166W	12	L330S	0W	13
L10S	69W	22	L130S	173W	7	L230S	176W	32	L330S	148W	5
			L130S	183W	6	L230S	184W	8	L330S	152W	4
L30S	0W	23	L130S	193W	12	L230S	188W	43	L330S	162W	2
L30S	4W	15	L130S	203W	7	L230S	220W	10	L330S	172W	14
L30S	11W	10	L130S	213W	9	L230S	224W	14	L330S	182W	11
L30S	16W	9	L130S	223W	15	L230S	234W	37	L330S	192W	9
L30S	26W	6	L130S	233W	15	L230S	244W	9	L330S	202W	5
L30S	36W	20	L130S	243W	6	L230S	254W	7	L330S	211W	14
L30S	46W	11	L130S	253W	10	L230S	264W	1	L330S	215W	11
L30S	56W	13	L130S	260W	8	L230S	274W	19	L330S	268W	2
L30S	66W	37	L130S	264W	5	L230S	284W	15	L330S	272W	143
L30S	70W	6	L130S	272W	8	L230S	294W	17	L330S	282W	23
			L130S	276W	9	L230S	304W	18	L330S	292W	10
L50S	3E	17	L130S	286W	12	L230S	314W	16	L330S	302W	13
L50S	0W	37	L130S	296W	8	L230S	324W	23	L330S	312W	INS
L50S	10W	15	L130S	306W	INS	L230S	332W	15	L330S	322W	4
L50S	14W	8	L130S	316W	12	L230S	336W	28	L330S	332W	5
L50S	20W	6	L130S	326W	2	L230S	346W	18	L330S	342W	0
L50S	24W	4	L130S	336W	5	L230S	350W	10	L330S	352W	5
L50S	34W	4	L130S	346W	32	L230S	360W	27	L330S	362W	3
L50S	44W	9	L130S	356W	1	L230S	370W	24	L330S	372W	25
L50S	54W	26	L130S	366W	6	L230S	380W	21	L330S	382W	23

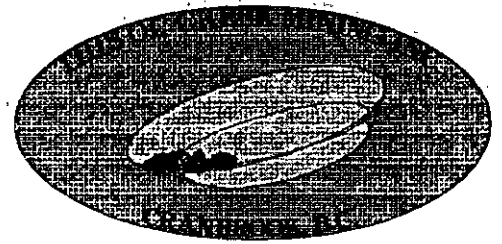
THIS OL' CREEK MINING INC.
SS 1, SITE 13, BOX 127
CRANBROOK, B.C.
VIC 4H4
604 426 2064



MOBILE MERCURY TEST RESULTS (PPB)

VELVET-PG 2	L430S 236W	10	L430S 574W	4	L530S 522W	22	
L330S 392W	17	L430S 241W	17	L430S 584W	20	L530S 526W	9
L330S 402W	17	L430S 300W	12	L430S 594W	18	L530S 536W	8
L330S 412W	11	L430S 304W	16	L430S 604W	23	L530S 546W	5
L330S 424W	2	L430S 314W	14	L430S 614W	63	L530S 556W	9
L330S 428W	13	L430S 326W	6	L430S 624W	77	L530S 566W	20
L330S 474W	18	L430S 336W	30	L430S 634W	80	L530S 576W	25
L330S 478W	8	L430S 346W	24	L430S 644W	42	L530S 586W	38
L330S 488W	18	L430S 356W	5	L430S 654W	40	L530S 596W	11
L330S 498W	35	L430S 366W	35	L430S 664W	24	L530S 606W	11
L330S 508W	39	L430S 376W	19	L430S 674W	28	L530S 616W	24
L330S 518W	37	L430S 386W	43	L430S 678W	23	L530S 626W	10
L330S 528W	24	L430S 396W	30			L530S 636W	14
L330S 538W	21	L430S 406W	26	L530S 350W	24	L530S 646W	10
L330S 548W	12	L430S 416W	23	L530S 354W	34	L530S 656W	13
L330S 558W	6	L430S 426W	20	L530S 364W	18	L530S 666W	18
L330S 568W	4	L430S 436W	20	L530S 374W	15	L530S 680W	12
L330S 578W	16	L430S 446W	7	L530S 384W	13	L530S 684W	22
L330S 588W	30	L430S 456W	19	L530S 394W	9		
L330S 598W	15	L430S 466W	12	L530S 404W	32	L590S 387W	19
L330S 608W	20	L430S 476W	21	L530S 414W	16	L590S 391W	27
L330S 613W	23	L430S 486W	6	L530S 424W	25	L590S 401W	24
L330S 616W	24	L430S 490W	40	L530S 434W	39	L590S 411W	12
		L430S 500W	20	L530S 444W	23	L590S 421W	12
L430S 0W	10	L430S 504W	28	L530S 454W	31	L590S 431W	15
L430S 182W	24	L430S 514W	16	L530S 464W	4	L590S 441W	11
L430S 186W	23	L430S 524W	44	L530S 474W	8	L590S 451W	9
L430S 196W	21	L430S 534W	21	L530S 484W	22	L590S 461W	20
L430S 206W	9	L430S 544W	24	L530S 494W	7	L590S 471W	23
L430S 216W	17	L430S 554W	28	L530S 504W	4	L590S 481W	20
L430S 226W	3	L430S 564W	10	L530S 508W	12	L590S 491W	0

THIS OL' CREEK MINING INC.
SS 1, SITE 13, BOX 127
CRANBROOK, B.C.
VIC 4H4
604 426 2064



MOBILE MERCURY TEST RESULTS (PPB)

VELVET--PG 3		L650S 507W	21
L590S 497W	8	L650S 517W	13
L590S 501W	10	L650S 527W	35
L590S 505W	2	L650S 537W	17
L590S 515W	17	L650S 547W	22
L590S 525W	14	L650S 557W	10
L590S 535W	8	L650S 567W	29
L590S 545W	16	L650S 577W	16
L590S 555W	27	L650S 587W	20
L590S 565W	13	L650S 597W	26
L590S 575W	9	L650S 607W	29
L590S 585W	13	L650S 617W	33
L590S 595W	13	L650S 621W	25
L590S 605W	57		
L590S 615W	38	L700S 510W	3
L590S 625W	15	L700S 520W	14
L590S 635W	19	L700S 530W	14
L590S 645W	2	L700S 540W	16
L590S 653W	44	L700S 550W	19
L590S 657W	19	L700S 560W	20
		L700S 570W	13
L650S 427W	10	L700S 576W	12
L650S 431W	10		
L650S 435W	10		
L650S 445W	9		
L650S 455W	27		
L650S 465W	21		
L650S 475W	32		
L650S 485W	16		
L650S 491W	21		
L650S 497W	30		

KOOTENAY GEO-SERVICES

PO. Box 63 ; Skookumchuck ; B.C. ; VOB 2E0
PH. (604) 422-3748

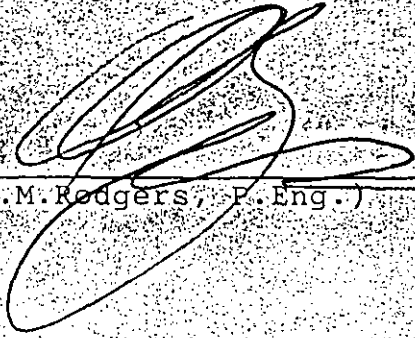
December 6, 1994

TO Whom it may concern:

Re.: MERCURY TESTING

I am familiar with the mercury tester used by Al Whalley. It is manufactured by the Jerome Instrument Corp., Jerome, Arizona and is called a Gold Film Mercury Tester - Model# 301. It is capable of giving a digital readout of the quantity of mercury in parts per billion. It is used primarily for soil testing. Care must be taken to sample only undisturbed soil and not to expose it to excessive heat.

Mercury testing of this nature has proven itself in the discovery of blind sulphide deposits. For example, in Noranda District, Quebec, the Norbec deposit was discovered at a depth of approximately 350 meters by drilling within a surface mercury dispersion halo of 2 times back-ground and by sampling drill core for mercury testing at regular intervals. Mercury testing would also probably work well for discovering new Sedex type Pb/Zn orebodies provided regional faulting is minimal as almost every major fault will act as a channelway for mercury dispersion.

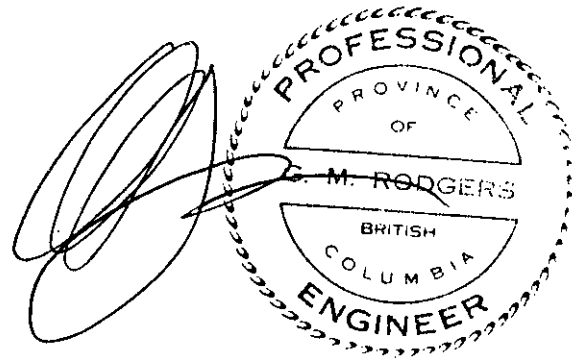


(G.M. Rodgers, P. Eng.)

3.3

STATEMENT OF COSTS:

Collection of samples: 292 @ 3.50	\$1022.00
Prep and analysis for Au	\$ 1423.58
Prep and analysis for Hg	\$ 2623.50
Report	\$ 200.00
 Total	 \$ 5269.08



STATEMENT of QUALIFICATIONS

I, Glen M. Rodgers of Skookumchuck, B.C., hereby certify as follows:

1. I am a consulting Geological Engineer presently registered with the Association of Professional Engineers and Geoscientists of British Columbia.

2. I graduated from the University of Manitoba in 1977 with a bachelor's degree in Geological Engineering.

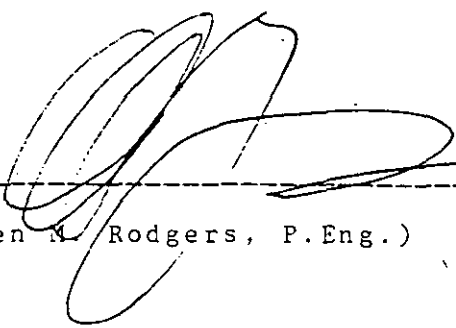
3. Since graduation, I have practised my profession continuously in Western Canada, Yukon Territory, Alaska and Central America working primarily in the field of mineral exploration.

4. I have based this report on work done by myself and others during September / October, 1995, on the Velvet claims.

5. I hold approximately 90,000 shares of Otis J. Exploration Corp.

I do not expect to receive any shares as a result of writing this report.

-dated this 24th day of December 1995, Cranbrook, British Columbia


(Glen M. Rodgers, P.Eng.)

