

RECEIVED

FEB 20 1996

**Gold Commissioner's Office
VANCOUVER, B.C.**

**GEOLOGICAL SURVEY BRANCH
ASSESSMENT REPORTS**

**DATE RECEIVED
FEB 29 1996**

GEOLOGICAL AND PROSPECTING REPORT

on the

**WAHLEACH 1 - 11 MINERAL CLAIMS
(Including the POPKUM LIMESTONE QUARRY)**

BRIDAL FALLS - CHEAM PEAK AREA

NEW WESTMINSTER MINING DIVISION, B.C.

NTS 92 H / 4E

49° 13'N Latitude / 121° 42' W Longitude

for

STEELHEAD AGGREGATES LTD.

103-2776 Bouquin Cres.

PO Box 178

Abbotsford, BC

V2S 4N8

Phone: 530-3990

(Owner)

by

**J.T. SHEARER, M.Sc., P.Geo.
HOMEGOLD RESOURCES LTD.**

#5-2330 Tyner St.

Port Coquitlam, BC

V3C 2Z1

**GEOLOGICAL BRANCH
ASSESSMENT REPORT**

Fieldwork completed between April 28, 1995 and May 10, 1995

FILMED

24,312

TABLE OF CONTENTS

	<u>Page</u>
LIST OF ILLUSTRATIONS AND TABLES.....	ii
SUMMARY	iii
INTRODUCTION.....	1
LOCATION AND ACCESS	2
CLAIM STATUS, LIST OF CLAIMS	3
PROPERTY GEOLOGY AND MINERALIZATION	4
GEOCHEMISTRY.....	6
GEOPHYSICS.....	7
CONCLUSIONS AND RECOMMENDATIONS	8
COST ESTIMATE FOR FUTURE WORK.....	9
REFERENCES	10
APPENDICES	
Appendix I - Statement of Qualifications	11
Appendix II - Statement of Costs.....	12
Appendix III - Copy of British Columbia Department of Mines Form G, Record of Mineral Claim	13

LIST OF ILLUSTRATIONS AND TABLES

		Following Page
	Illustrations	
FIGURE 1	Location Map	1
FIGURE 2	Topographic & Geological Map - 1:50,000.....	2
FIGURE 3	Claim Map - 1:50,000	3
FIGURE 4	Regional Geology - 1:250,000.....	4
FIGURE 5	Airborne Magnetometer Survey - 1:63,360	6
FIGURE 6	Local Geology 1:20,000.....	7
FIGURE 7	Sketch Map of Pəpkum Limestone Quarry - 1:1,000.....	5

Tables

TABLE 1	List of Claims.....	3
TABLE 2	Geochemical Results.....	6

SUMMARY

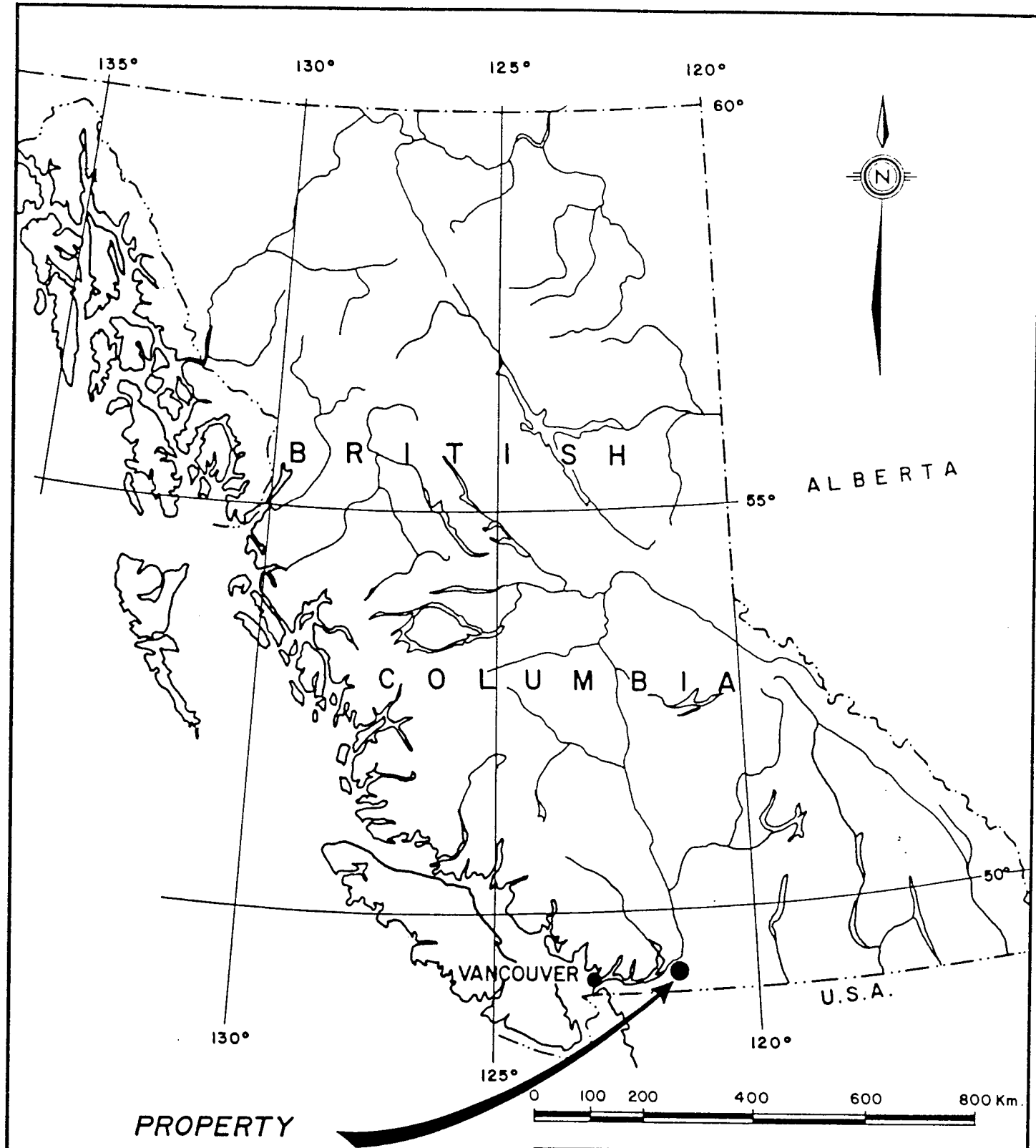
- 1) Geological mapping and prospecting was carried out in May 1995 on the Wahleach 1-11 claims. The Wahleach claims were located to cover a favourable geological environment consisting of hornfelsed and skarnified lower Permian limestone intruded by granodiorite which contains the past producer Popkum Limestone Quarry.
- 2) Low-grade gold-bearing arsenopyrite float was previously discovered to the east of the claim boundaries and stream sediment samples previously collected were also anomalous in arsenic and gold (up to 950 ppb Au). A chip sample taken in 1947 across 24 meters of the western Limestone band averaged 45.75% CaO.
- 3) The general geological setting, composed mainly of Permian limestone intruded by Miocene granodiorite is similar to that of several other interesting copper-gold properties in the general area. The suitability of the limestone unit for cement manufacture requires additional study. Past production from the Popkum Quarry is reported to be 107,000 tones in the period 1917 to 1970.
- 4) Samples taken from the Popkum Quarry in 1995 averaged 8.28% SiO₂, 0.75% Al₂O₃, 49.44% CaO and 0.04 % total Alkali.
- 5) The initial stage of the proposed program of test excavations would cost about \$25,000 and, with success in target definition of a calcium carbonate resource, a follow-up program involving shallow trenching and exploratory drilling would be required with a considerably larger budget.

INTRODUCTION

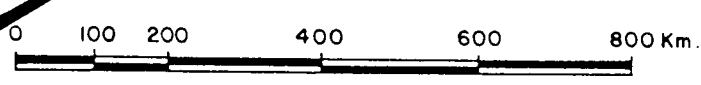
The Wahleach 1-11 two-post mineral claims are located in Cheam Mountain area of the New Westminster Mining Division of British Columbia adjacent to the Trans Canada Highway. This report describes the geological setting and mineral potential found on the Wahleach 1-11 mineral claims and contains recommendations for further exploration work. The area is underlain by a clastic and carbonate sequence of the Chilliwack Group intruded by the Miocene Mount Barr Batholith (Richards and McTaggart, 1976).

The Wahleach 1-11 claims are drained by several steep, west flowing creeks. The steepness of the terrain coupled with the thick underbrush has hampered evaluations in the past. Two lower Permian carbonate units of the Devonian-Permian Chilliwack Group are exposed as two north trending bands 300 metres apart along the base of Mount Cheam for at least 600 metres. The western band is at least 24 meters thick while the eastern band is at least 60 metres thick. This section is orientated 150°/30°NE.

Present work has defined the general carbonate environment which has not been evaluated in detail in the past, despite the relative ease of access.



PROPERTY
LOCATION



GENERAL LOCATION MAP	
PROJECT :	WALEACH MINERAL CLAIMS
ENG. :	
DWG. NUMBER :	Figure 1

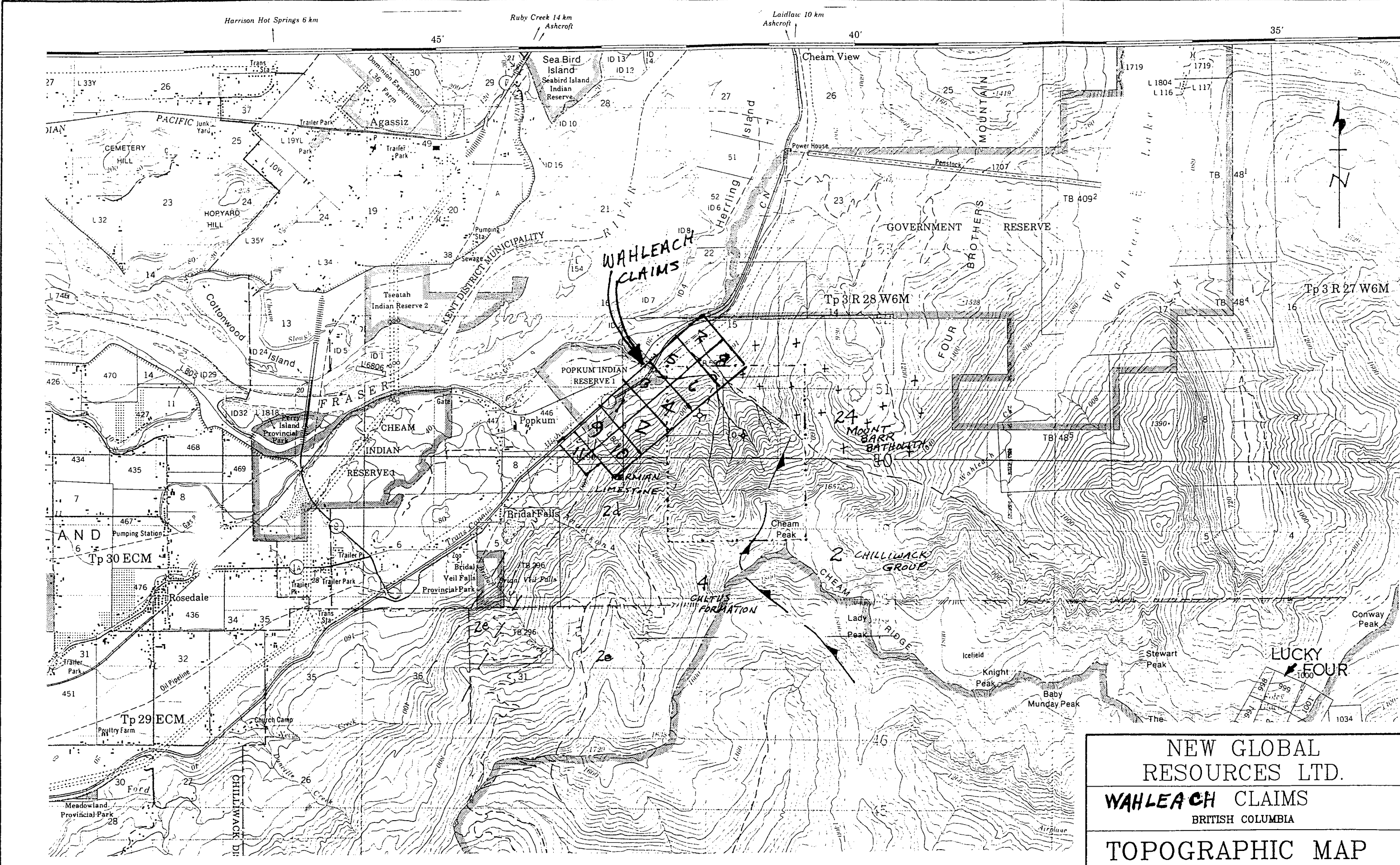
LOCATION AND ACCESS

The property is reached via the Trans Canada Highway (Hwy. No.1), which parallels the steep northwesterly facing slope of Cheam Mountain in the vicinity of Bridal Falls, a road distance of approximately 90 km east of Vancouver, B.C., Figure 1. A power line service and gas pipeline road traverses the west side of the Wahleach 1-11 mineral claims and provides access from the Trans Canada Highway, approximately 2,000 metres west of the village of Popkum, B.C. The gate is usually kept locked by Trans Mountain Pipeline Ltd. (for information phone: Vancouver 876-6711 or Hope 869-5993). This service road is 1.7 km east of the overpass at Exit No. 138 and opposite Julseth road. This junction turn-off is also 4 km west of the Jones Lake Power Station. An old overgrown logging road provides easy access to the western side of the claims. This road could be brushed out by a bulldozer in short order if more advanced exploration is required. Cheam Peak is a prominent geographical feature along the southeast boundary of the Wahleach mineral claims.

The Wahleach 1-11 mineral claims are centred at latitude 49° 13'N, longitude 121° 42'W at an elevation that ranges from 60 metres in the northwest to 450 metres in the southeastern portion of the claims, (Figure 2).

Topography is steep and covered by dense second growth except in cliff or talus zones. Snowfall is rare at lower levels but heavy near the upper limits, although present for only a few winter months. Water is available in small creeks year-round. The property is far enough removed from the Highway and power and gas lines to allow medium-scale mining.

Surface rights are held by Mr. Chuck McKay, who operates a small sawmill and other enterprises. When the Trans Canada Highway was widened in the mid 1980's Mr. McKay moved this sawmill from across from Harling Island to his present location. Recently, Mr. McKay indicated that Maris Transport produced from the Popkum Quarry in the near past. He is concerned about slope stability associated with mining. Mr. McKay apparently has the rights to a transportation corridor along an abandoned rail spur which came into the old quarry during the 1930's. He also controls the "docking" rights into the Fraser River just west of Popkum Village.



NEW GLOBAL RESOURCES LTD.
WAHLEACH CLAIMS
 BRITISH COLUMBIA
TOPOGRAPHIC MAP

SCALE: 1:50,000	DATE: May 1990	DRAWN BY: JTS
ENG: NEW GLOBAL RESOURCES LTD.		FIG. 2

CLAIM STATUS

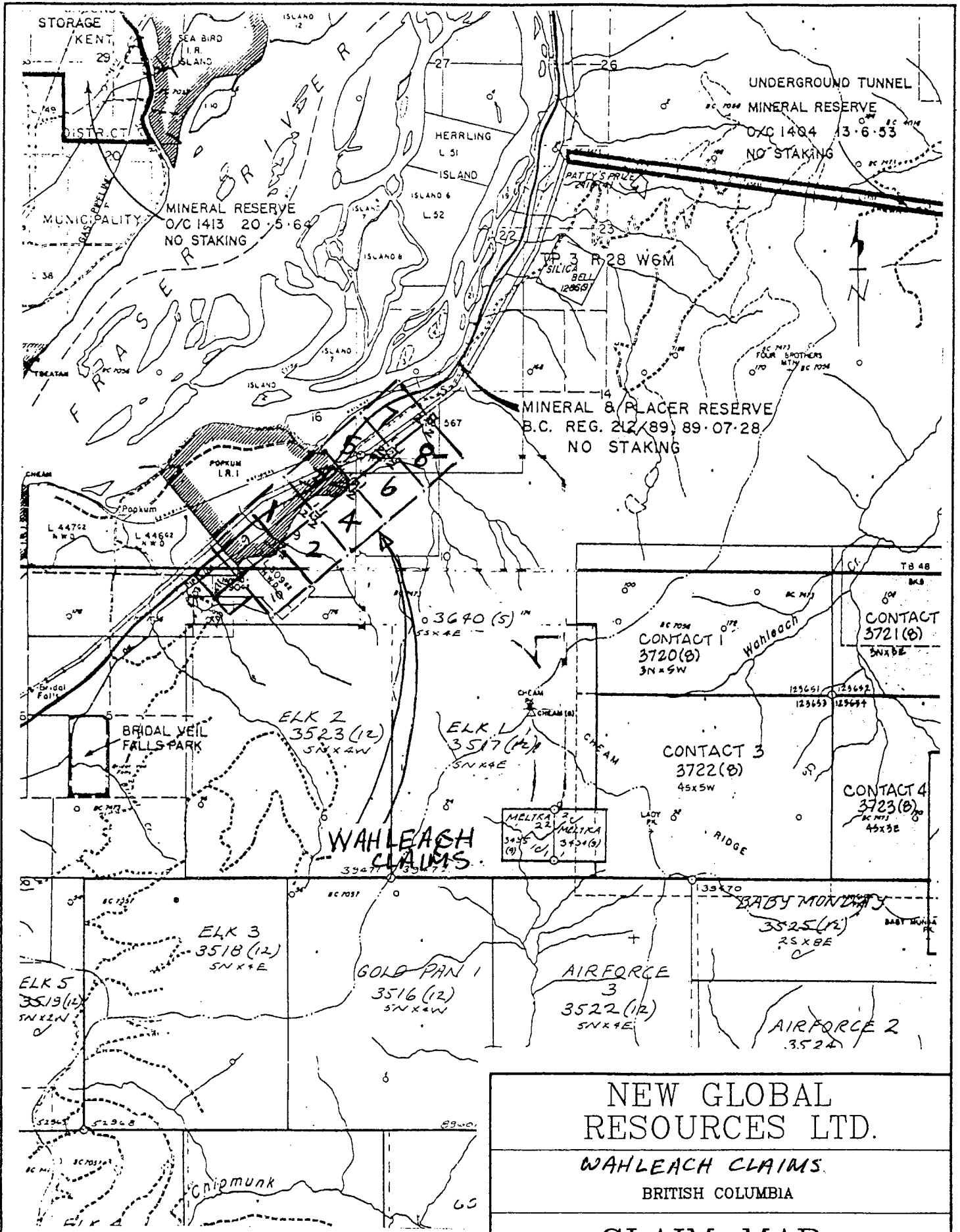
The principal area of interest is covered by the Wahleach 1-11 mineral claims staked under the two-post system (appendix A) and registered in the name of J.T. Shearer. The claims are being transferred to Steelhead Aggregates Ltd., 103-2776 Bourquin Crescent, PO Box 187, Abbotsford, BC V2Z 4N8. Figure 3 shows the record claim block. The claim is located within the New Westminster Mining Division.

Claim Name	Record No.	Units	Location Date	Expiry Date
Wahleach 1	333977	1	Feb. 21, 1995	Feb 21, 1997 *
Wahleach 2	333978	1	Feb. 21, 1995	Feb 21, 1997*
Wahleach 3	333979	1	Feb. 21, 1995	Feb 21, 1997 *
Wahleach 4	333980	1	Feb. 21, 1995	Feb 21, 1997 *
Wahleach 5	333981	1	Feb. 21, 1995	Feb 21, 1997 *
Wahleach 6	333982	1	Feb. 21, 1995	Feb 21, 1997 *
Wahleach 7	333983	1	Feb. 21, 1995	Feb 21, 1997 *
Wahleach 8	333984	1	Feb. 21, 1995	Feb 21, 1997 *
Wahleach 9	335175	1	April 25, 1995	April 25, 1997 *
Wahleach 10	335176	1	April 25, 1995	April 25, 1997 *
Wahleach 11	335177	1	April 25, 1995	April 25, 1997 *

* with application of assessment work documented in this report.

Under the present status of mineral claims in British Columbia, the consideration of industrial minerals requires careful designation of the product's end use. An industrial mineral is a rock or naturally occurring substance that can be mined and processed for its unique qualities and used for industrial purposes (as defined in the *Mineral Tenure Act*). It does not include "Quarry Resources". Quarry Resources includes earth, soil, marl, peat, sand and gravel, and rock, rip-rap and stone products that are used for construction purposes (as defined in the *Land Act*). Construction means the use of rock or other natural substances for roads, buildings, berms, breakwaters, runways, rip-rap and fills and includes crushed rock. Dimension stone means any rock or stone product that is cut or split on two or more sides, but does not include crushed rock.

The expected end use of the CaCO₃ resource (that of supporting the cement plant) from the Wahleach Project of Steelhead Aggregates Ltd. comes within the Industrial Use definition and therefore can be considered under the *Mineral Tenure Act*. Claims require \$100 of assessment work per unit (or cash-in-lieu) each of the first three years and \$200 per unit each year after.



<p>NEW GLOBAL RESOURCES LTD.</p> <p>WAHLEASH CLAIMS.</p> <p>BRITISH COLUMBIA</p> <p>CLAIM MAP</p>		
SCALE: 1:50,000	DATE:	DRAWN BY: JTS
ENG: NEW GLOBAL RESOURCES LTD.		FIG. 3

PROPERTY GEOLOGY AND MINERALIZATION

There has been little detailed mapping of the property in the past and only reconnaissance geochemical sampling and float prospecting has been carried out within the area of the Wahleach 1-11 mineral claims (Figure 7) until the work by the present owner in 1990, 1991 and 1995. Float specimens containing arsenopyrite, pyrrhotite and minor chalcopyrite within a brecciated siliceous hornfels were located to the east of Wahleach 6 & 8 mineral claims. Other float samples containing weakly mineralized garnetiferous skarn, biotite hornfels and intrusive lithologies have been collected but the actual contact areas have yet to be located and explored.

The Wahleach 1-11 claims are mainly underlain by late Paleozoic Chilliwack Group and Triassic-Jurassic Cultus Formation. To the northeast, the claims are intruded by Conway Phase granodiorite (ca. 18Ma) of the Mount Barr Batholith (Richards & McTaggart, 1976). The upper part of Cheam Peak consists of a thrust sheet of Chilliwack Group Rocks.

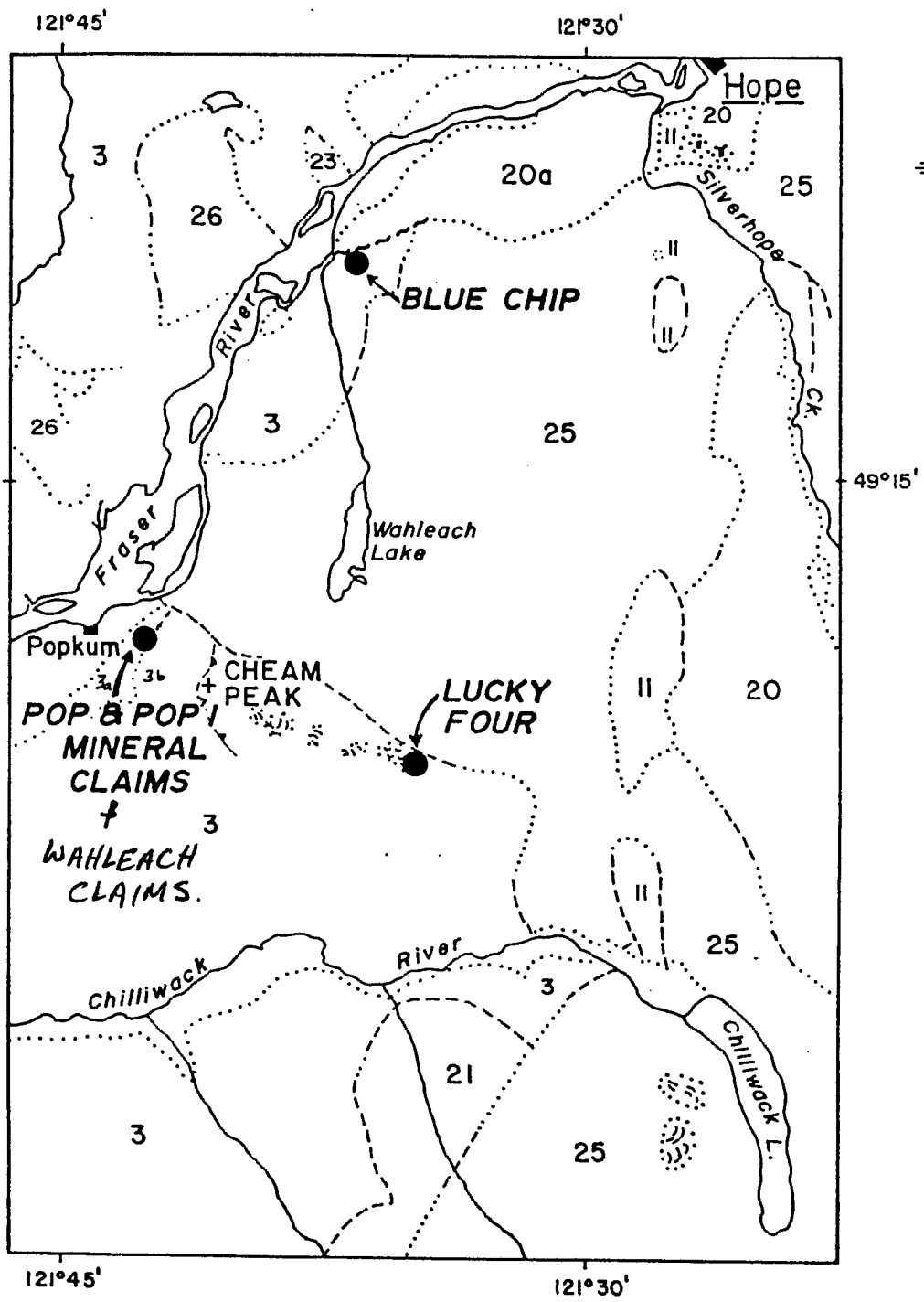
The structure of the area (Monger, 1970) is that of northwesterly overturned and recumbent folds, which gently plunge to the northeast (at approximately 30°). Within the Wahleach 1-11 Claims Permian Chilliwack Group limestone is duplicated at least twice (unit 2d).

The Mount Barr Batholith is exposed at the north edge of the property at the entrance to "Cheam" Creek canyon. These outcrops are composed of coarsely crystalline biotite granodiorite (Figure 7). The Cultus Formation consists mainly of black slate to cherty black hornfels.

The Chilliwack Group is composed mainly of Permian marble which has been altered to varying degrees to calc-silicate assemblages. Diopside and epidote altered carbonates are common within the talus of Cheam Creek.

Garnet-actinolite-epidote skarn containing minor pyrite was observed in several localities. A similar skarn occurrence at the contact Chilliwack Group limestone and Conway phase granodiorite of the Mount Barr Batholith is the Lucky Four Property which is located 5 miles east of the Wahleach claims. Although the Lucky Four Group has been investigated by considerable diamond drilling and underground drifting between 1918 and 1955 (Cairnes, 1923), its location at 6,400 ft. elevation in a very rugged part of the Cheam range has hampered definition of ore.

Previous work to the east of Wahleach 1-11 claims area is recorded in the Minister of Mines Annual Report 1966, page 61. The Cheam No.2 claim had been held since 1957 and the main showing was 0.6 miles south of the power line crossing of the highway at the elevation of 1,700 ft. (515m) above the highway. Access was via the overgrown logging road for 1.5 miles and then 800 feet southeast through the bush. The main showing consisted of two irregular, parallel, vertical vuggy quartz "veins" (probably a quartz phase of the skarn assemblage), 7 feet wide and 50 feet apart. They can be traced



LEGEND

- OLDER SEDIMENTARY ROCKS
- CRETACEOUS AND/OR TERTIARY
 - II ··· Conglomerate, Sandstone
- TRIASSIC AND JURASSIC
 - 3b Cultus Formation ; Pelite, Sandstone
- PENNSYLVANIAN AND PERMIAN
 - 3 ··· CHILLIWACK GROUP
 - 3a Basic Volcanic Rocks, Pelites Limestone And Acidic Tuff
- INTRUSIVE ROCKS
- TERTIARY
 - 25/26 ··· Granodiorite, Quartz Diorite
 - JURASSIC (?) AND LATER
 - 23 ··· Chiefly Serpentine
 - 21 ··· Slesse Hornblende Diorite
 - CRETACEOUS
 - 20/20a ··· Quartz Diorite



REGIONAL GEOLOGICAL SETTING
 G.S.C. MAP 737 A AND
 G.S.C. MAP 12-1969

PROJECT: MINERAL CLAIM

ENG:

DWG. NUMBER: FIGURE 4

southward up the face of a limestone bluff. Mineralization consists of scattered veinlets of chalcopyrite and irregular masses of pyrrhotite. Some sulfides were noted to extend into the limestone wall rocks (MMAR 1966) and the limestone is altered to garnet in spots. A pit 20 feet wide and 5 feet deep was excavated on the west "vein". Samples taken by government personnel are as follows (MMAR 1966):

		Copper%	Gold	Silver	WO ₃
(1)	7 foot channel on east vein	0.08	trace	nil	--
(2)	7 foot channel on west vein	0.11	nil	nil	--
(3)	grab of massive sulfide west vein	0.025	trace	trace	--
(4)	grab of sulfides, west vein	0.17	nil	trace	trace

There is a series of topographic benches (faults?) at the 700-800m elevation which result in 10 to 15 meter high bluffs of limestone just above the uppermost old logging road. The pit dug in 1966 was not relocated.

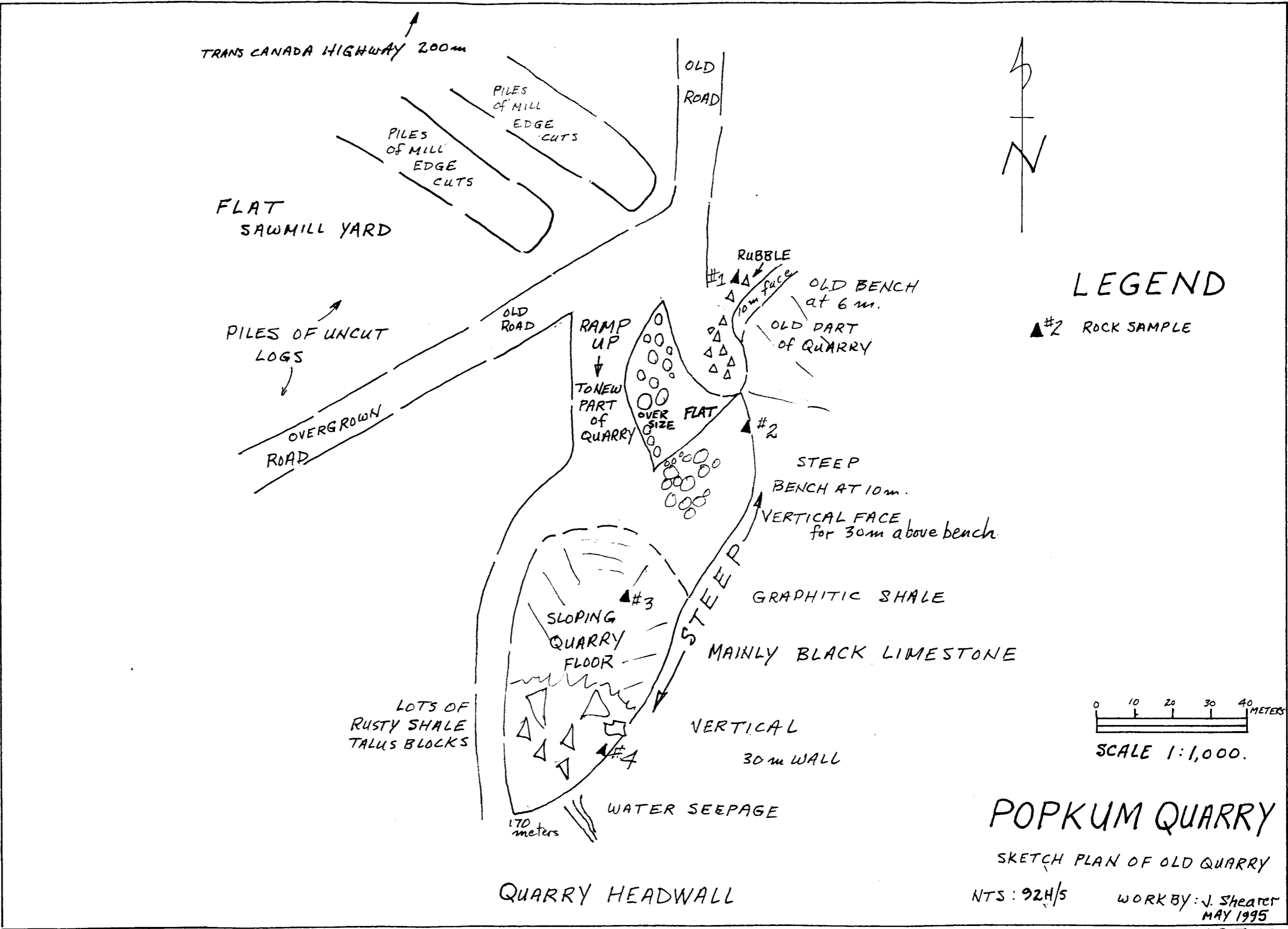
The Popkum Quarry on Wahleach 9, and 11 occurs in the western unit of the Lower Permian Limestone. This unit has been dated by Fusilinids. Two north-trending bands 300 metres apart along the base of Mount Cheam for at least 600 metres. The western band is at least 24 meters thick while the eastern band is at least 60 metres thick. This section is orientated 150°/30°NE.

Both bands are generally composed of dark grey to black, medium-grained limestone containing some chert lenses and a few veinlets and masses of quartz and calcite. In the Popkum Quarry, Figure 7, displays lenses and thin beds of fine grained siliceous limestone. Chip samples taken in 1947, (Bulletin 40, page 42) across 24.3 meters averaged 45.75% CaO. Results of samples taken in 1995 are shown below:

	SiO ₂	Al ₂ O ₃	Fe ₂ O ₃	CaO	MgO	Na ₂ O	K ₂ O	SO ₃	P ₂ O ₅	TiO ₂	Total Alkali	Total
No.1	8.35	1.15	0.42	49.51	0.46	0.02	0.04	0.02	0.03	0.05	0.05	60.05
No.2	1.08	0.21	0.14	54.47	0.53	0.00	0.01	0.05	0.04	0.01	0.01	56.54
No.3	22.19	1.33	0.53	40.70	0.62	0.05	0.06	0.17	0.09	0.05	0.09	65.79
No.4	1.49	0.30	0.15	54.07	0.55	0.01	0.01	0.05	0.03	0.01	0.02	56.67

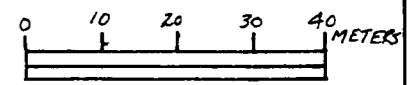
*loss on ignition - undetermined

Production as detailed in Minfile amounted to over 107,000 tons of Limestone in the period 1917 to 1970. Most of the limestone was quarried by Fraser Valley Lime between 1949 and 1970.



LEGEND

▲ #2 ROCK SAMPLE



SCALE 1:1,000.

POPKUM QUARRY

SKETCH PLAN OF OLD QUARRY

NTS: 92H/5 WORK BY: J. Shearer
MAY 1995

FIGURE 7

GEOCHEMISTRY

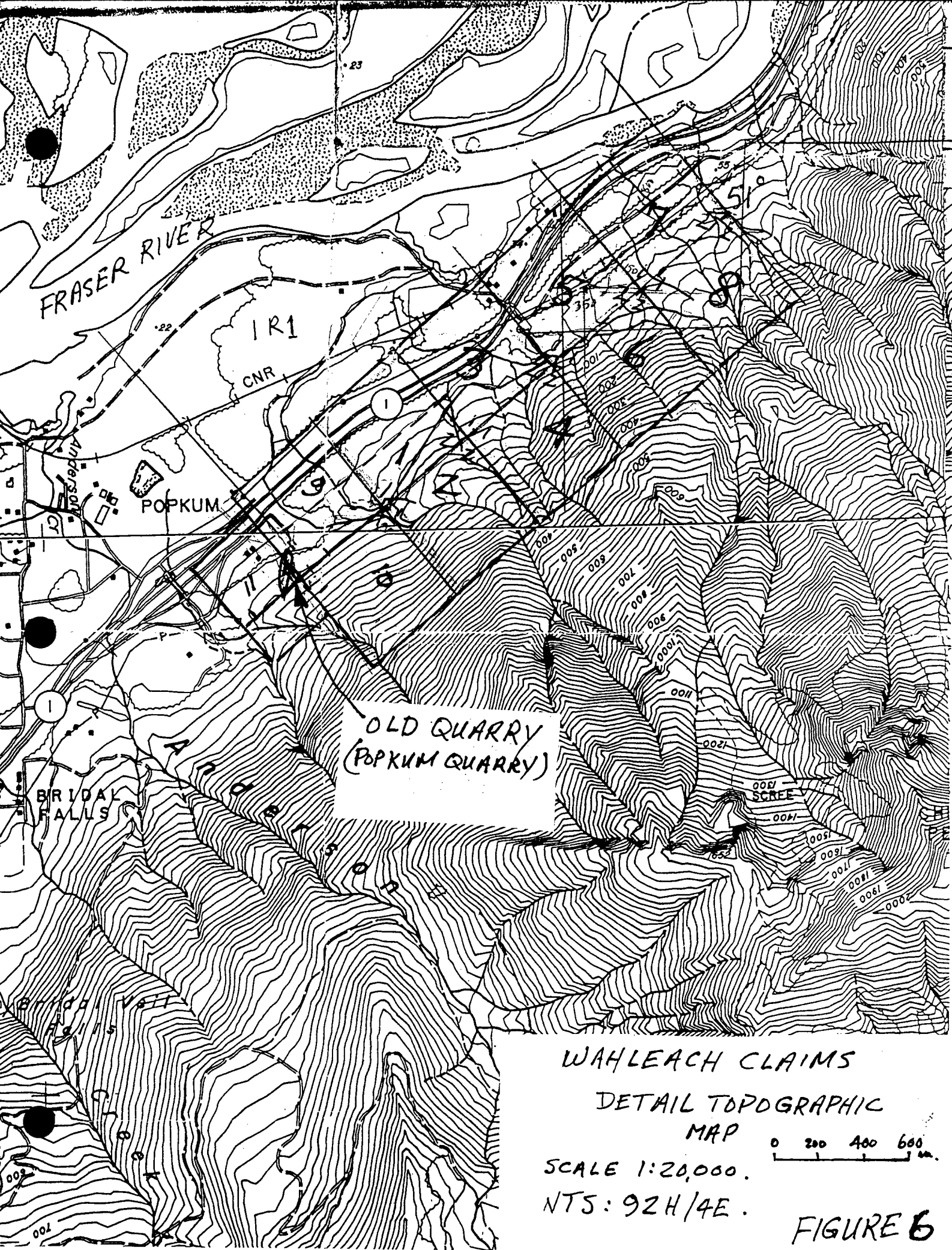
The following data are included in this report for completeness. Reconnaissance stream sediment geochemical results in 1983 and 1984 confirm the presence of moderately anomalous concentrations of arsenic (to 127 ppm) within the southern portion of the Wahleach mineral claims (see Figure 5) where float contains up to 418 ppm As. Gold in several of the silts are distinctly anomalous at 60, 90 and 950 ppb while a few rock chip samples showed anomalous gold results up to 270 ppb Au. A few zinc and copper silt values recorded are low but of interest while silver and lead results show no anomalous values.

Geochemical results are in Table 2.

TABLE 2
Geochemical Results

Type	Number	Gold Range (ppb)	Arsenic Range (ppm)	Copper Range (ppm)	Zinc Range (ppm)	Lead Range (ppm)	Silver Range (ppm)
Silts	37	5 to 950	3 to 113	14 to 86	12 to 175	2 to 16	0.1 to 0.5
Soils	14	5 to 35	15 to 127	24 to 103	41 to 167	3 to 22	0.1 to 0.6
Rocks	7	5 to 270	2 to 418	3 to 1528	2 to 104	2 to 14	0.1 to 0.8

Due to the steepness of the terrain, stream sediment is not distributed evenly throughout the course of the creek. Reconnaissance soil sampling has demonstrated a close correlation of anomalous values to nearby silt samples with elevated Au and As content.



FRASER RIVER

IR1
CNR

POPKUM

OLD QUARRY
(POPKUM QUARRY)

BRIDAL
FALLS

WAHLEACH CLAIMS

DETAIL TOPOGRAPHIC
MAP

SCALE 1:20,000.

NTS: 92H/4E.

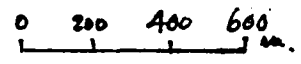


FIGURE 6

GEOPHYSICS

An airborne magnetic survey was completed in 1972 and published as Map 8536G (Chilliwack) a portion of which is shown as Figure 6. The Wahleach 1-11 claims are situated on the southwest margin of a highly complex pattern which reflects the area underlain by the Mount Barr Batholith.

The Cultus Formation and Chilliwack Group appear to have similar magnetic signatures and any subtleties are overshadowed by the strong anomalies from the Mount Barr Intrusions. The intrusive contact appears to trend northeast off the north end of the claims.

The results of the airborne survey suggests that a comprehensive ground magnetic survey would be useful in defining the complex intrusive contact observed during the mapping.



Scale: One Inch to One Mile = $\frac{1}{63,360}$ Miles



CONTOUR LINES IN GAMMAS

Geo-Comp Systems

NEW GLOBAL RESOURCES LTD.		
CLAIMS BRITISH COLUMBIA		
AIRBORNE MAGNETOMETER		
SCALE: 1:63,360	DATE: May 1990	DRAWN BY: JTS
ENG: NEW GLOBAL RESOURCES LTD.		FIG. 5

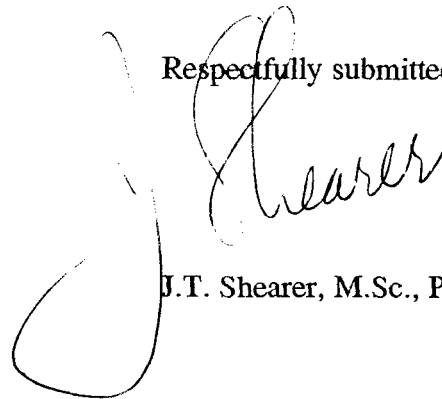
CONCLUSIONS AND RECOMMENDATIONS

A systematic exploration program is required to properly assess the mineral potential of the Wahleach 1-11 mineral claims. Previous production from the Popkum Quarry amounted to over 107,000 tons during the period 1917 and 1970.

A continuing exploration program is recommended to locate and evaluate the cement grade limestone potential of the Wahleach 1-11 mineral claims. Samples taken from the Popkum Quarry in 1995 averaged 8.28% SiO₂, 0.75% Al₂O₃, 49.44% CaO and 0.04 % total Alkali.

The exploration program recommended consists of hoe excavations of the old quarry to take a bulk sample for crushing and processing and establish chemical parameters. A control baseline should be established running approximately north-south through the central southern portion of the property, and a number of flagged east-west (approximately contour) lines run from 100 metre intervals along it. Detailed geological mapping should be keyed to gridlines.

Respectfully submitted,



J.T. Shearer, M.Sc., P.Geo.

COST ESTIMATE FOR FUTURE WORK

A follow-up program of Hoe work in the old quarry to determine the quality of the limesonte unit.

An estimate of the costs is as follows:

1)	Excavation and Bulk sample old Quarry (Cat 225 Hoe)	\$ 10,500.00
2)	Geologist (mapping) 7 days at \$300 per day	2,100.00
3)	Field Supplies	
	a) chain, flagging, base map	1,100.00
	b) trenching supplies	1,500.00
4)	Assays 50 samples for Major elements and minor contaminants	2,000.00
5)	Engineering and Supervision, Office Overhead, Permit Application	3,800.00
	Consulting Reports	<u>2,500.00</u>
	Subtotal	21,000.00
6)	Contingency at approximately 20%	<u>4,000.00</u>
	Total	<u>\$ 25,000.00</u>

Exploratory drilling as a follow-up stage to define reserves, would probably require some road building support with estimated cost of \$75,000.000 minimum.

REFERENCES

- BC Minister of Mines, Annual Report, 1966, p.61.
- Cairnes, C.E., 1923. Lucky Four Mining Property, Cheam Range, B.C. Geological Survey of Canada, in Summary Report, 1922, Part A, Page 127-138.
- McDougall, J.J., 1984. Report on the Pop and Pop 1 Mineral Claims, Bridal Falls - Cheam Peak Area, Private Report for Saturn Energy and Resources Ltd., Jan. 9, 1984, 11 pp.
- McDougall, J.J., 1988. Report on the Pop Mineral Claim, Private Report for Gold Ventures Ltd., May 25, 1988, 10 pp.
- Monger, J.W.H., 1970. Hope Map Area, West Half, Geological Survey of Canada, Paper 69-47, 75 pp.
- Ray, G.E., 1982. The Nagy Gold Occurrences, B.C. Department of Mines Paper 1983-1, Geological Fieldwork 1982.
- Richards, T.A. and McTaggart, K.C., 1976. Granitic Rocks of the Southern Coast plutonic Complex and Northern Cascades of British Columbia. Geological Society of America Bulletin 87, P. 935-953.
- Shearer, J.T., 1984. Assessment Report on the Hunter Group, Hunter Creek Area. Assessment Report, 1984, 12 pp.
- Shearer, J.T., 1990. Assessment Geological and Prospecting Report on the POP #1 Mineral Claim, Bridal Falls - Cheam Peak Area, Private Report for New Global Resources Ltd., May 25, 1990, 10 pp.

APPENDIX I

STATEMENT OF QUALIFICATIONS

May 15, 1995

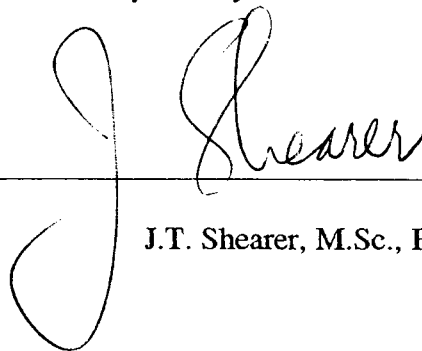
Appendix I

STATEMENT OF QUALIFICATIONS

I, JOHAN T. SHEARER, of 1817 Greenmount Avenue, in the City of Port Coquitlam, in the Province of British Columbia, do hereby certify:

1. I am a graduate of the University of British Columbia (B.Sc., 1973) in Honours Geology, and the University of London, Imperial College (M.Sc., 1977).
2. I have over 20 years experience in exploration for base and precious metals and industrial mineral commodities in the Cordillera of Western North America with such companies as McIntyre Mines Ltd., J.C. Stephen Explorations Ltd., Carolin Mines Ltd. and TRM Engineering Ltd.
3. I am a fellow in good standing of the Geological Association of Canada (Fellow No. F439) and I am a member in good standing with the Association of Professional Engineers and Geoscientists of British Columbia (Member No. 19,279).
4. I am an independent consulting geologist employed since December 1986 by Homegold Resources Ltd. at #5-2330 Tyner St., Port Coquitlam, B.C.
5. I am the author of a report entitled "Geological and Prospecting Report on the Wahleach 1-11 Claims, Bridal Falls Area, British Columbia" dated May 15, 1995.
6. I have visited the property on April 28 to May 10, 1995 and numerous times in previous years. I have carried out mapping and sample collection and am familiar with the regional geology and geology of nearby properties. I have become familiar with the previous work conducted on the Wahleach 1-11 claims by examining in detail the available reports and maps and have discussed previous work with persons knowledgeable of the area.

Dated at Vancouver, British Columbia, this 15th day of May 1995.



J.T. Shearer, M.Sc., F.G.A.C., P.Geo.

APPENDIX II

STATEMENT OF COSTS

May 15, 1995

APPENDIX II

Statement of Costs

Wages and Benefits

J.T. Shearer, M.Sc., P.Geo. \$ 900.00
3 days at \$300 per day April 29, May 1 & 2, 1995.

Transportation

3 days truck rental at \$53.50 per day 160.50
Gasoline 62.00

Meals 35.80

Drafting

4 hours at \$20.00 per hour 80.00

Report Preparation 150.00

Word Processing and Reproduction 113.45

GRAND TOTAL \$ 1501.75

APPENDIX III

**COPY OF
BRITISH COLUMBIA DEPT. of MINES**

**FORM G
RECORD OF MINERAL CLAIMS**

May 15, 1995

31

Province of British Columbia Ministry of Energy, Mines and Petroleum Resources
RECORD OF 2 POST CLAIM - MINERAL TENURE ACT

MAP NO. 092H-4E

SECTION 23

TENURE NO. 333977

MINING RECEIPT NO. 1000001 RECORDED AT Vancouver

BC DATE OF RECORD February 21 19 95

DO NOT WRITE IN THIS SHADED AREA

[Signature]
GOLD COMMISSIONER

New Westminster

MINING DIVISION

PLEASE PRINT CLEARLY

J. T. SHEARER

AGENT FOR

APPLICATION TO RECORD A 2 POST CLAIM

#5 - 2330 TYNER ST.,
PORT COQUITLAM, B.C.

944-6102 V3C 2Z1

CLIENT NUMBER 124452

hereby apply for a record of a 2 post claim for the location as outlined on the attached copy of mineral titles reference map No. 92 H/4E in the NEW WESTMINSTER Mining Division.

ACCESS: Describe how you gained access to the location; include references to roads, trails, topographic features, permanent landmarks, and a description of the post location.

Along Trans Canada Highway, east of the Villages of Popkum and Bridal Falls about 2000 meters, south of Trans Mountain oil Pipeline, access road is directly off the Highway 1.7 km east of the overpass at Exit #138 and opposite Julseth Road.

I have securely affixed the portion of the metal identification tag embossed "INITIAL POST (NO. 1)" to the initial post and impressed this information on the tag:

TAG NUMBER 660563 M
INITIAL POST (NO. 1)

CLAIM NAME WAHLEACH #1

LOCATOR J. T. SHEARER

AGENT FOR

DATE COMMENCED FEBRUARY 21 1995

TIME COMMENCED 9:00 AM

DIR. TO NO. 2 POST 051°

METRES TO RIGHT

METRES TO LEFT 500

I have securely affixed the portion of the metal identification tag embossed "FINAL POST (NO. 2)" to the final post (or the witness post) and impressed this information on the tag:

TAG NUMBER 660563 M
FINAL POST (NO. 2)

CLAIM NAME WAHLEACH #1

LOCATOR J. T. SHEARER

AGENT FOR

DIST. FROM NO. 1 POST 500 m

DATE COMPLETED FEBRUARY 21 1995

TIME COMPLETED 10:30 AM

*If witness post placed for final post:

Bearing to true position of final post

distance metres

I have complied with all the terms and conditions of the Mineral Tenure Act Regulation pertaining to the location of 2 post claims and have attached a plan of the location on which the positions of the initial and final posts (and witness and identification posts if applicable) are indicated.

[Signature]
Signature of Locator

RECEIVED
01 FEB 22 1995 260.
Gold Commissioner's Office
VANCOUVER, B.C.

RECORDING STAMP



RECORD OF 2 POST CLAIM - MINERAL TENURE ACT

SECTION 23

MAP NO. 092H-4E

TENURE NO. 333978

MINING RECEIPT NO. 1000001 RECORDED AT Vancouver BC DATE OF RECORD February 21 1995

DO NOT WRITE IN THIS SHADED AREA Dup. GOLD COMMISSIONER New Westminister MINING DIVISION

APPLICATION TO RECORD A 2 POST CLAIM

PLEASE PRINT CLEARLY J. T. SHEARER AGENT FOR #5 - 2330 TYNER ST., PORT COQUITLAM, B.C. 944-6102 V3C 2Z1 124452

hereby apply for a record of a 2 post claim for the location as outlined on the attached copy of mineral titles reference map No. 92H/4E in the NEW WESTMINSTER Mining Division.

ACCESS: Describe how you gained access to the location; include references to roads, trails, topographic features, permanent landmarks, and a description of the post location.

Along Trans Canada Highway, east of the Villages of Popkum and Bridal Falls about 2000 meters, south of Trans Mountain Oil Pipeline, access road is directly off the Highway 1.7 km east of the overpass at Exit 138 and opposite Julseth Road.

I have securely affixed the portion of the metal identification tag embossed "INITIAL POST (NO. 1)" to the initial post and impressed this information on the tag:

TAG NUMBER 660564M INITIAL POST (NO. 1)

CLAIM NAME WAHLEACH #2 LOCATOR J. T. SHEARER AGENT FOR

DATE COMMENCED FEBRUARY 21 1995 TIME COMMENCED 9:00 AM DIR TO NO. 2 POST 500 051 METRES TO RIGHT 500 METRES TO LEFT

I have securely affixed the portion of the metal identification tag embossed "FINAL POST (NO. 2)" to the final post (or the witness post) and impressed this information on the tag:

TAG NUMBER 660564-M FINAL POST (NO. 2)

CLAIM NAME WAHLEACH #2 LOCATOR J. T. SHEARER AGENT FOR

DIST. FROM NO. 1 POST 500 m DATE COMPLETED FEBRUARY 21 1995 TIME COMPLETED 10:30 AM

*If witness post placed for final post: Bearing to true position of final post distance metres.

I have complied with all the terms and conditions of the Mineral Tenure Act Regulation pertaining to the location of 2 post claims and have attached a plan of the location on which the positions of the initial and final posts (and witness and identification posts if applicable) are indicated.

Signature of Locator J. Shearer

RECEIVED FEB 22 1995 01 260 Gold Commissioner's Office VANCOUVER, B.C.

RECORDING STAMP

British Columbia Ministry of Energy, Mines and Petroleum Resources
 RECORD OF 2 POST CLAIM — MINERAL TENURE ACT

4E

SECTION 23

TENURE NO. 333979

1000001 RECORDED AT Vancouver

BC DATE OF RECORD February 21 19 95

J.P. Phillips
 GOLD COMMISSIONER

New Westminster
 MINING DIVISION

PLEASE PRINT CLEARLY

1. T. SHEARER
 -2330 TYNER ST.,
 RT COQUITLAM, B.C.
 4-610Z V3C 2Z1
 NUMBER 124 452

AGENT FOR
 ADDRESS
 TELEPHONE
 CLIENT NUMBER

I apply for a record of a 2 post claim for the location as outlined on the attached copy of mineral titles reference map

92 H/4E in the NEW WESTMINSTER Mining Division.

Describe how you gained access to the location; include references to roads, trails, topographic features, permanent landmarks, and a description of the post location.

Trans Canada Highway, east of the villages of Popkum + Bridal about 2500 m, south of Trans Mountain oil Pipeline, access is directly off the Highway 1.7 Km east of the overpass at Exit 138 opposite Subseth Road.

I have affixed a portion of the metal identification tag embossed "INITIAL POST (NO. 1)" to the initial post and impressed this information on the tag:

CLAIM NUMBER 660565M
 INITIAL POST (NO. 1)
 WAHLEACH #3
 T. SHEARER

I have securely affixed the portion of the metal identification tag embossed "FINAL POST (NO. 2)" to the final post (or the witness post*) and impressed this information on the tag:

TAG NUMBER 660565M
 FINAL POST (NO. 2)
 CLAIM NAME WAHLEACH #3
 LOCATOR J. T. SHEARER
 AGENT FOR

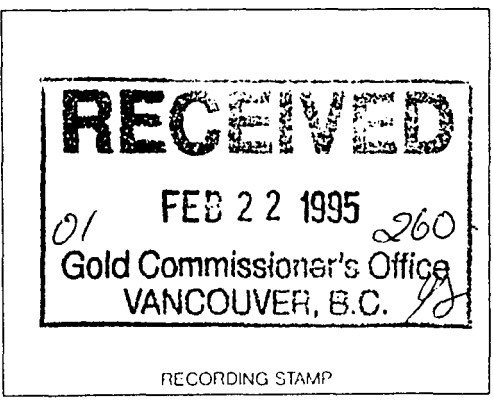
RECORDED February 21 1995
 TIME 1035 AM
 DIST. FROM NO. 1 POST 500

DIST. FROM NO. 1 POST 500
 DATE COMPLETED February 21 1995
 TIME COMPLETED 12 15 PM

*If witness post placed for final post:
 Bearing to true position of final post
 distance metres.

I agree with all the terms and conditions of the Mineral Tenure Act Regulation and have attached a plan of the location on which the initial and final posts (and witness and identification posts if applicable) are located.

T. Shearer



32
 21 19 95

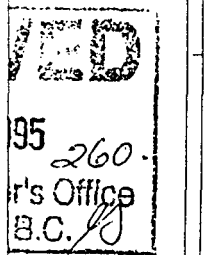
MINING DIVISION

marks, and a
 line,
 pass at

identification tag
 (or the witness

1

1 1995



AP



MAP NO. 92H-4E

TENURE NO. 333984

MINING RECEIPT NO. 1000001 RECORDED AT Vancouver BC DATE OF RECORD February 21 1995

DO NOT WRITE IN THIS SHADED AREA [Signature] GOLD COMMISSIONER New Westminster MINING DIVISION

APPLICATION TO RECORD A 2 POST CLAIM

PLEASE PRINT CLEARLY
I, J. T. SHEARER NAME AGENT FOR _____ NAME
#5 - 2330 TYNER ST., ADDRESS
PORT COQUITLAM, B.C. ADDRESS
944-6102 TELEPHONE V3C 2Z1 TELEPHONE
CLIENT NUMBER 124452 CLIENT NUMBER _____

hereby apply for a record of a 2 post claim for the location as outlined on the attached copy of mineral titles reference map No. 92H/4E in the NEW WESTMINSTER Mining Division

ACCESS: Describe how you gained access to the location; include references to roads, trails, topographic features, permanent landmarks, and a description of the post location.

Along Trans Canada Highway, east of the Village of Popkum and Bridal Falls about 3500 m, south of Trans Mountain oil Pipeline, access road is directly off Highway 1.7 km east of the top overpass at EXIT 138 and opposite Lutseth Road.

I have securely affixed the portion of the metal identification tag embossed " INITIAL POST (NO. 1)" to the initial post and impressed this information on the tag:

TAG NUMBER 660570M
INITIAL POST (NO. 1)

CLAIM NAME WAHLEACH #8
LOCATOR J. T. SHEARER
AGENT FOR _____
DATE COMMENCED February 21 1995
TIME COMMENCED 135 PM
DIR. TO NO 2 POST 051°
METRES TO RIGHT 500
METRES TO LEFT _____

I have securely affixed the portion of the metal identification tag embossed " FINAL POST (NO. 2)" to the final post (or the witness post*) and impressed this information on the tag:

TAG NUMBER 660570M
FINAL POST (NO. 2)

CLAIM NAME WAHLEACH #8
LOCATOR J. T. SHEARER
AGENT FOR _____
DIST. FROM NO. 1 POST 500 m
DATE COMPLETED February 21 1995.
TIME COMPLETED 300 PM
*If witness post placed for final post:
Bearing to true position of final post _____
distance _____ metres.

I have complied with all the terms and conditions of the Mineral Tenure Act Regulation pertaining to the location of 2 post claims and have attached a plan of the location on which the positions of the initial and final posts (and witness and identification posts if applicable) are indicated.

[Signature]
Signature of Locator

RECEIVED
01 FEB 22 1995 260.
Gold Commissioner's Office
VANCOUVER, B.C.

RECORDING STAMP



MAP NO. 92H-4E

TENURE NO. 335175

MINING RECEIPT NO. 933517J RECORDED AT Vancouver

B.C. DATE OF RECORD April 25 19 95

DO NOT WRITE IN THIS SHADED AREA

Balati
Deputy
GOLD COMMISSIONER

New Westminster
MINING DIVISION

PLEASE PRINT CLEARLY

1. J. T. SHEARER
NAME

AGENT FOR

NAME

#5 - 2330 TYNER ST.,
ADDRESS

ADDRESS

PORT COQUITLAM, B.C.

944-6102 V3C 2Z1
TELEPHONE POSTAL CODE

TELEPHONE

POSTAL CODE

CLIENT NUMBER 124452

CLIENT NUMBER

APPLICATION TO RECORD A 2 POST CLAIM

hereby apply for a record of a 2 post claim for the location as outlined on the attached copy of mineral titles reference map No. 92 H/4E, in the NEW WESTMINSTER Mining Division.

ACCESS: Describe how you gained access to the location; include references to roads, trails, topographic features, permanent landmarks, and a description of the post location.

Along the Trans Canada Highway, east of the villages of Popkum and Bridal Falls about 2000 meters, south of Trans Mountain oil pipeline, access road is directly off the Highway, 1.7 km east of the overpass at Exit 138 and opposite Sulseth Road.

I have securely affixed the portion of the metal identification tag embossed "INITIAL POST (NO. 1)" to the initial post and impressed this information on the tag:

TAG NUMBER 660572 M
INITIAL POST (NO. 1)

CLAIM NAME WAHLEACH 9

LOCATOR J. T. SHEARER

AGENT FOR

DATE COMMENCED APRIL 25 1995

TIME COMMENCED 9 30 AM

DIR. TO NO. 2 POST 051°

METRES TO RIGHT

METRES TO LEFT 500

I have securely affixed the portion of the metal identification tag embossed "FINAL POST (NO. 2)" to the final post (or the witness post) and impressed this information on the tag:

TAG NUMBER 660572 M
FINAL POST (NO. 2)

CLAIM NAME WAHLEACH 9

LOCATOR J. T. SHEARER

AGENT FOR

DIST. FROM NO. 1 POST 500 m

DATE COMPLETED APRIL 25 1995

TIME COMPLETED 11 00 AM

*If witness post placed for final post:

Bearing to true position of final post
distance _____ metres.

ACCESS

TAG INFORMATION

ACKNOWLEDGEMENT

I have complied with all the terms and conditions of the Mineral Tenure Act Regulation pertaining to the location of 2 post claims and have attached a plan of the location on which the positions of the initial and final posts (and witness and identification posts if applicable) are indicated.

Signature of Locator

RECEIVED

MAY 1 - 1995

933517J
Gold Commissioner's Office
VANCOUVER, B.C.

RECORDING STAMP



MAP NO. 92H-4E

TENURE NO. 335176

MINING RECEIPT NO. 933517J RECORDED AT Vancouver

BC DATE OF RECORD April 25 1995

DO NOT WRITE IN THIS SHADED AREA a Deputy Balati GOLD COMMISSIONER

New Westminster MINING DIVISION

APPLICATION TO RECORD A 2 POST CLAIM

PLEASE PRINT CLEARLY
I, J. T. SHEARER AGENT FOR _____
NAME
#5 - 2330 TYNER ST., ADDRESS
PORT COQUITLAM, B.C.
944-6102 V3C 2Z4 TELEPHONE POSTAL CODE
CLIENT NUMBER 124452

AGENT FOR _____
NAME
ADDRESS
TELEPHONE POSTAL CODE
CLIENT NUMBER _____

hereby apply for a record of a 2 post claim for the location as outlined on the attached copy of mineral titles reference map No. 92H/4E in the NEW WESTMINSTER Mining Division.

ACCESS: Describe how you gained access to the location; include references to roads, trails, topographic features, permanent landmarks, and a description of the post location.

Along the Trans Canada Highway, east of the Villages of Popkum and Bridal Falls about 2000 meters, south of Trans Mountain oil Pipeline, Access road is directly off the Highway, 1.7 km east of the overpass at EXIT 138 and opposite Jubeth Road.

I have securely affixed the portion of the metal identification tag embossed "INITIAL POST (NO. 1)" to the initial post and impressed this information on the tag:

TAG NUMBER 660571M
INITIAL POST (NO. 1)

CLAIM NAME WAHLEACH 10
LOCATOR J. T. SHEARER
AGENT FOR _____
DATE COMMENCED APRIL 25 1995
TIME COMMENCED 9:30 AM
DIR. TO NO. 2 POST 051°
METRES TO RIGHT 500m
METRES TO LEFT _____

I have securely affixed the portion of the metal identification tag embossed "FINAL POST (NO. 2)" to the final post (or the witness post) and impressed this information on the tag:

TAG NUMBER 660571M
FINAL POST (NO. 2)

CLAIM NAME WAHLEACH 10
LOCATOR J. T. SHEARER
AGENT FOR _____
DIST. FROM NO. 1 POST 500m
DATE COMPLETED APRIL 25 1995
TIME COMPLETED 11:00 AM
*If witness post placed for final post:
Bearing to true position of final post _____
distance _____ metres.

I have complied with all the terms and conditions of the Mineral Tenure Act Regulation pertaining to the location of 2 post claims and have attached a plan of the location on which the positions of the initial and final posts (and witness and identification posts if applicable) are indicated.

Signature of locator





MAP NO. 92H-4E

TENURE NO. 335177

MINING RECEIPT NO. 933517J RECORDED AT Vancouver

B.C. DATE OF RECORD April 25 1995

DO NOT WRITE IN THIS SHADED AREA

Deputy Dalati
GOLD COMMISSIONER

New Westminster
MINING DIVISION

APPLICATION TO RECORD
A
2 POST CLAIM

PLEASE PRINT CLEARLY

J. T. SHEARER
NAME
#5-2330 TYNER ST.,
ADDRESS
PORT COQUITLAM, B.C.
944-6102 V3C 2Z1
TELEPHONE POSTAL CODE
CLIENT NUMBER 124452

AGENT FOR _____
NAME _____
ADDRESS _____
TELEPHONE _____
POSTAL CODE _____
CLIENT NUMBER _____

hereby apply for a record of a 2 post claim for the location as outlined on the attached copy of mineral titles reference map No. 92H/4E in the NEW WESTMINSTER Mining Division.

ACCESS

ACCESS: Describe how you gained access to the location; include references to roads, trails, topographic features, permanent landmarks, and a description of the post location.

Along the Trans Canada Highway, east of the villages of Popkum and Bridal Falls about 2000 meters, south of Trans Mountain Oil Pipeline, Access road is directly off the Highway, 1.7 km east of the overpass at EXIT 138 and opposite Sulseth Road.

TAG INFORMATION

I have securely affixed the portion of the metal identification tag embossed "INITIAL POST (NO. 1)" to the initial post and impressed this information on the tag:

TAG NUMBER 651772M
INITIAL POST (NO. 1)

CLAIM NAME WAHLEACH II
LOCATOR J. T. SHEARER
AGENT FOR _____
DATE COMMENCED APRIL 25 1995
TIME COMMENCED 1130 AM
DIR. TO NO. 2 POST 051°
METRES TO RIGHT 100
METRES TO LEFT 400

I have securely affixed the portion of the metal identification tag embossed "FINAL POST (NO. 2)" to the final post (or the witness post) and impressed this information on the tag:

TAG NUMBER 651772M
FINAL POST (NO. 2)

CLAIM NAME WAHLEACH II
LOCATOR J. T. SHEARER
AGENT FOR _____
DIST. FROM NO. 1 POST 300 meters
DATE COMPLETED APRIL 25 1995
TIME COMPLETED 100 PM
*If witness post placed for final post:
Bearing to true position of final post _____
distance _____ metres.

I have complied with all the terms and conditions of the Mineral Tenure Act Regulation pertaining to the location of 2 post claims and have attached a plan of the location on which the positions of the initial and final posts (and witness and identification posts if applicable) are indicated.

J Shearer
Signature of Locator

RECEIVED
MAY 1 - 1995
933517J
Gold Commissioner's Office
VANCOUVER, B.C.
RECORDING STAMP