

GEOLOGICAL SURVEY BRANCH
ASSESSMENT REPORTS

DATE RECEIVED

APR 03 1996

1995 DIAMOND DRILLING REPORT

SIWASH GOLD MINE AREA, ELK PROPERTY

Similkameen Mining Division, B. C.
Siwash Lake Area, British Columbia
NTS: 92H-16W; Lat. 49°50'N; Long. 120°19'W

February, 1996

VOLUME II: PLATES 1 - 15

This report consists of seven volumes:

Volume I: Text, Tables & Figures
Volume II: Plates 1 - 15
Volume III: Plates 16 - 30
Volume IV: Plates 31 - 45
Volume V: Plates 46 - 68
Volume VI: Appendices A & B
Volume VII: Appendix C

**GEOLOGICAL SURVEY BRANCH
ASSESSMENT REPORTS**

24,374

By

Wojtek Jakubowski, B.Sc., P. Geo.

&

Paul Controy, B.Sc., P. Geo.

Fairfield Minerals Ltd.
1980 - 1055 West Hastings Street
Vancouver, B. C. V6E 2E9

PART 2 OF 7

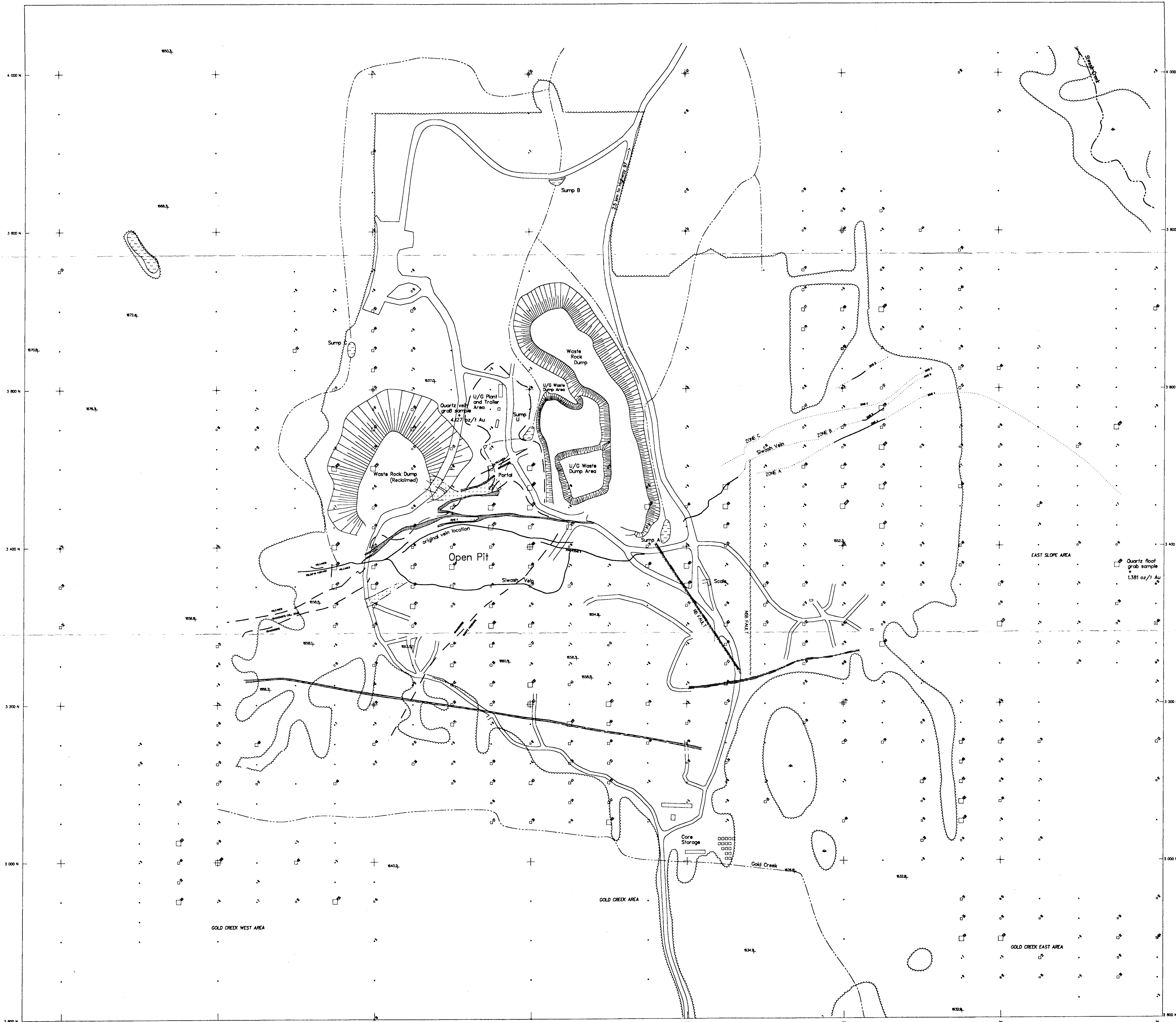
FILMED

TABLE OF CONTENTS

VOLUME II

PLATES

	(in pockets)	<u>Scale</u>
<u>Siwash North Area:</u>		
<u>Plate 1:</u> - Compilation Map		1:1000
<u>Plate 2:</u> - Drill Section 1980E		1:250
<u>Plate 3:</u> - Drill Section 2000E		1:250
<u>Plate 4:</u> - Drill Section 2020E		1:250
<u>Plate 5:</u> - Drill Section 2040E		1:250
<u>Plate 6:</u> - Drill Section 2060E		1:250
<u>Plate 7:</u> - Drill Section 2080E		1:250
<u>Plate 8:</u> - Drill Section 2090E North		1:250
<u>Plate 9:</u> - Drill Section 2090E South		1:250
<u>Plate 10:</u> - Drill Section 2100E		1:250
<u>Plate 11:</u> - Drill Section 2110E		1:250
<u>Plate 12:</u> - Drill Section 2120E		1:250
<u>Plate 13:</u> - Drill Section 2130E		1:250
<u>Plate 14:</u> - Drill Section 2140E North		1:250
<u>Plate 15:</u> - Drill Section 2140E South		1:250



- LAKE, POND, SLUMP
- CREEK, STREAM
- TREED AREA
- SWAMP
- ROAD
- ELEVATION POINT (metres)
- SOIL GEOCHEMICAL SAMPLE, Au ppb (values less than 5ppb not posted)
- MINERALIZED ZONE
- ANDESITE DYKE
- APLITE DYKE

LOGICAL BRAND
ASSESSMENT REPORT

24,374

0 20 40 60 80 100 120 140 160 180 200 METRES

PART 2 OF 7

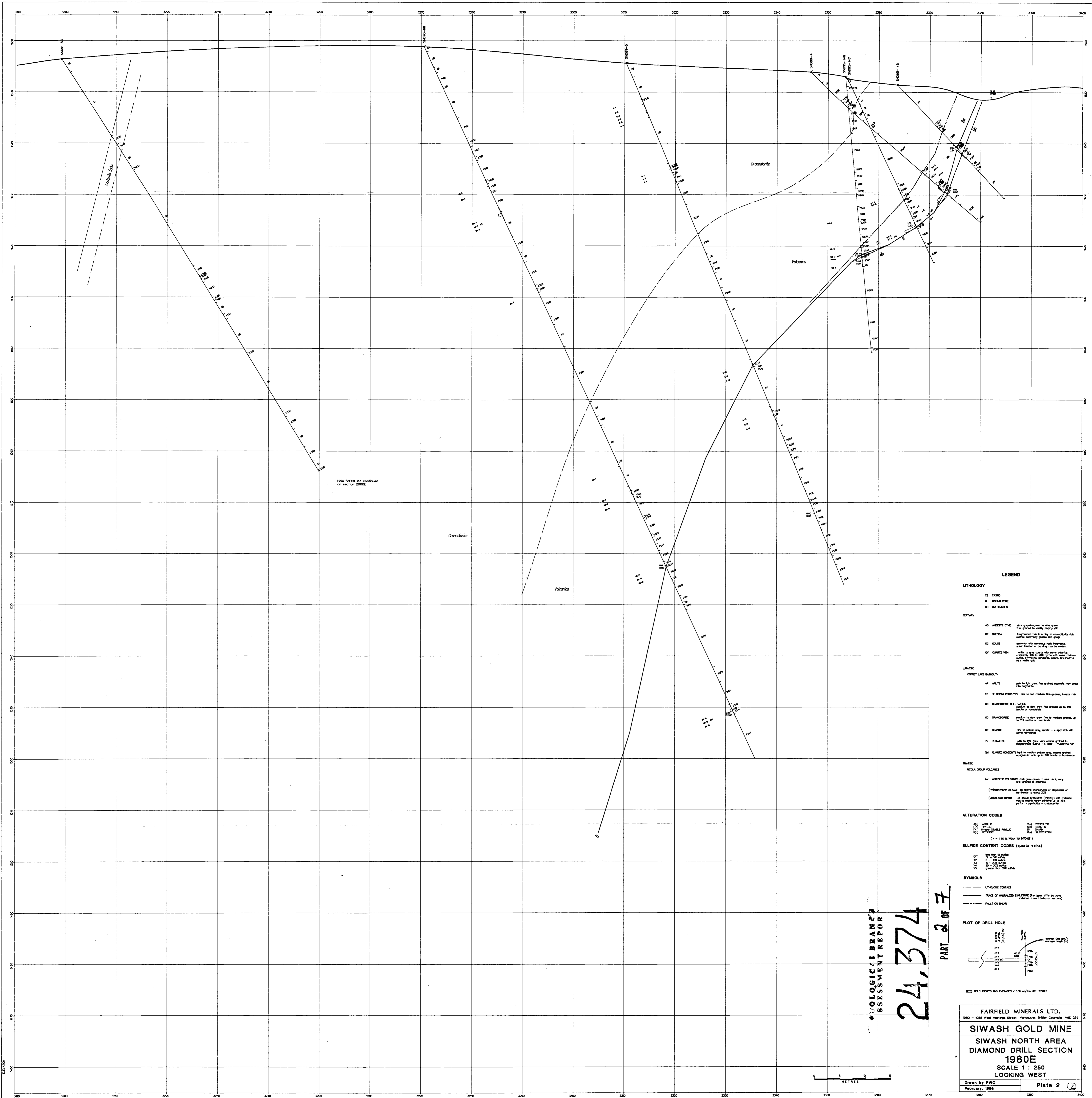
ELK PROPERTY
Similkameen Mining Division
NTS 82H/16W, B.C.

**SIWASH NORTH AREA
COMPILATION
MAP**

SCALE 1 : 2000

Drawn by WJ, EM Plate 1
February 1998

FAIRFIELD MINERALS LTD.
1980 - 1055 West Hastings Street Vancouver, British Columbia V6E 2E9



LEGEND

LITHOLOGY

CS CASING
 M MISSING CORE
 OB OVERBURDEN

TERTIARY

AO ANDESITE DYKE dark green-green to olive green fine-grained to medium porphyritic
 BR BRECCIA conglomeratic mass to a clay or sandstone rich matrix, secondary grades like group
 OS OLDS dark rock with numerous rock fragments, small clasts of quartzite and granite
 QV QUARTZ VEIN veins of grey quartz with some small clasts of granite, gneiss, mica, talc, chlorite and other minerals

JURASSIC

CPPEY LAKE BATHOLITH

AP AMPHIBOLITE gneiss to light grey, fine grained, medium to coarse grained
 FP FELDSPAR PORPHYRY gneiss to red, medium fine-grained, 1-400 mesh
 GC GRANODIORITE DIAL MICHON medium to dark grey, fine grained, up to 100 mesh or finer
 GD GRANODIORITE medium to dark grey, fine to medium grained, up to 100 mesh or finer
 GR GRANITE gneiss to light grey, coarse grained - 1-400 mesh with some porphyry
 PG PEGMATITE gneiss to light grey, very coarse grained to megacrystic quartz - 1-400 mesh
 QM QUARTZ MONZONITE gneiss to medium coarse grey, coarse grained, megacrystic up to 100 mesh or finer

TRINIDAD

NEELA GROUP VOLCANICS

AV ANDESITE VOLCANICS dark grey-green to red black, very fine-grained to coarse
 (P) PANGLOSS VOLCANICS as above, megacrystic of porphyry or porphyry to coarse grained
 (M) MIDDLE BROWN as above, megacrystic (granite) with quartzite matrix, coarse grained up to 100 mesh - porphyry - andesite

ALTERATION CODES

AO ANDESITE
 PZ PEGMATITE
 KV KALBAR
 (n = 1 to 5, WEAK TO STRONG)

MS SULFIDE CONTENT CODES (quartz veins)

01 less than 0.1% sulfide
 02 0.1 to 0.2% sulfide
 03 0.2 to 0.5% sulfide
 04 greater than 0.5% sulfide

SYMBOLS

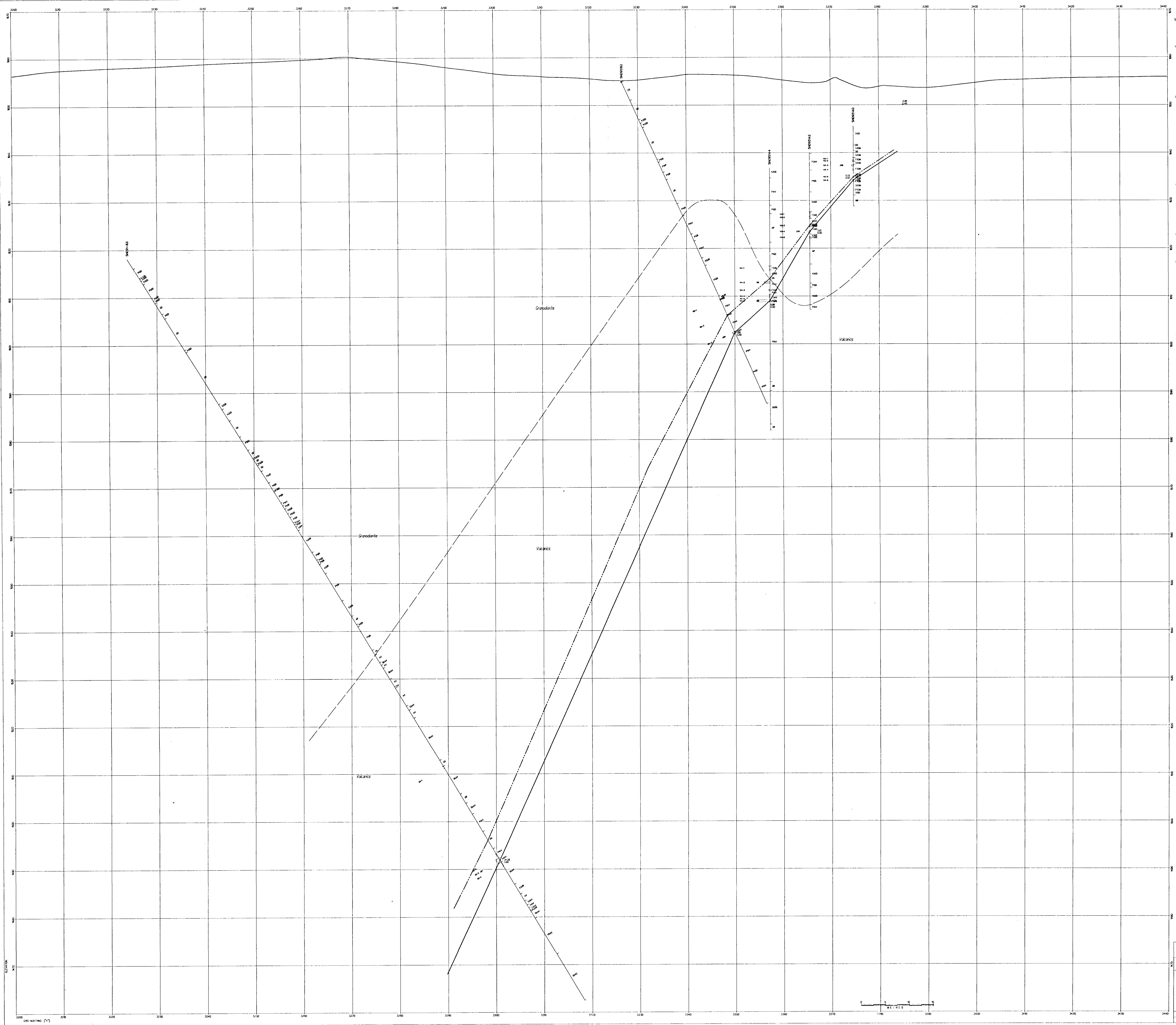
--- LITHOLOGIC CONTACT
 --- TRACE OF UNFOLDED STRUCTURE (line types differ by zone, refer to legend on section)
 --- FAULT OR BREAK

PLOT OF DRILL HOLE

NOTE: GOLD ASSAYS AND ANALYSES < 0.01 g/t Au NOT PLOTTED

GEOLOGICAL BRANCH
 ASSESSMENT REPORT
 24,374
 PART 2 OF 7

FAIRFIELD MINERALS LTD.
 1900 - 1050 West Hastings Street, Vancouver, British Columbia V6C 2E9
SIWASH GOLD MINE
SIWASH NORTH AREA
DIAMOND DRILL SECTION
1980E
 SCALE 1 : 250
 LOOKING WEST
 Drawn by PWC
 February, 1988
 Plate 2



LEGEND

LITHOLOGY

OS GNEISS
 M MEDIUM GRADE
 BS GNEISS/GNEISS

TERRACE

AO ANDESITE DYKE
 BR BRONZE
 CG COAL
 DV QUARTZ VEIN

JANSON

SM SMOKE-LIKE BATHOLITH
 AP APULITE
 FP FELDSPATH PORPHYRY
 GC GRANODIORITE GNEISS
 GD GRANODIORITE
 GR GRANITE
 HG HORNBLITE
 IM QUARTZ MONZONITE

TRAP

MS MOUNTAIN SLOPE
 AV ANDRESITE VOLCANIC
 (SYNOGENETIC VOLCANIC - IN CONTACT WITH GRANITE OR
 GRANODIORITE)
 (VOLCANIC DOME - IN CONTACT WITH GRANITE OR
 GRANODIORITE)

ALTERATION CODES

AO ANDESITE
 BR BRONZE
 CG COAL
 DV QUARTZ VEIN
 GR GRANITE
 HG HORNBLITE
 IM QUARTZ MONZONITE

SULFIDE CONTENT CODES (QUARTZ VEINS)

S1 S1
 S2 S2
 S3 S3
 S4 S4
 S5 S5
 S6 S6
 S7 S7
 S8 S8
 S9 S9
 S10 S10
 S11 S11
 S12 S12
 S13 S13
 S14 S14
 S15 S15
 S16 S16
 S17 S17
 S18 S18
 S19 S19
 S20 S20
 S21 S21
 S22 S22
 S23 S23
 S24 S24
 S25 S25
 S26 S26
 S27 S27
 S28 S28
 S29 S29
 S30 S30
 S31 S31
 S32 S32
 S33 S33
 S34 S34
 S35 S35
 S36 S36
 S37 S37
 S38 S38
 S39 S39
 S40 S40
 S41 S41
 S42 S42
 S43 S43
 S44 S44
 S45 S45
 S46 S46
 S47 S47
 S48 S48
 S49 S49
 S50 S50
 S51 S51
 S52 S52
 S53 S53
 S54 S54
 S55 S55
 S56 S56
 S57 S57
 S58 S58
 S59 S59
 S60 S60
 S61 S61
 S62 S62
 S63 S63
 S64 S64
 S65 S65
 S66 S66
 S67 S67
 S68 S68
 S69 S69
 S70 S70
 S71 S71
 S72 S72
 S73 S73
 S74 S74
 S75 S75
 S76 S76
 S77 S77
 S78 S78
 S79 S79
 S80 S80
 S81 S81
 S82 S82
 S83 S83
 S84 S84
 S85 S85
 S86 S86
 S87 S87
 S88 S88
 S89 S89
 S90 S90
 S91 S91
 S92 S92
 S93 S93
 S94 S94
 S95 S95
 S96 S96
 S97 S97
 S98 S98
 S99 S99
 S100 S100

SYMBOLS

— LITHOLOGIC CONTACT
 --- TRACE OF METAMORPHIC STRUCTURES (SEE MAP FOR A MORE DETAILED EXPLANATION)
 - - - - - FAULT OR DEEP

PLOT OF DRILL HOLE

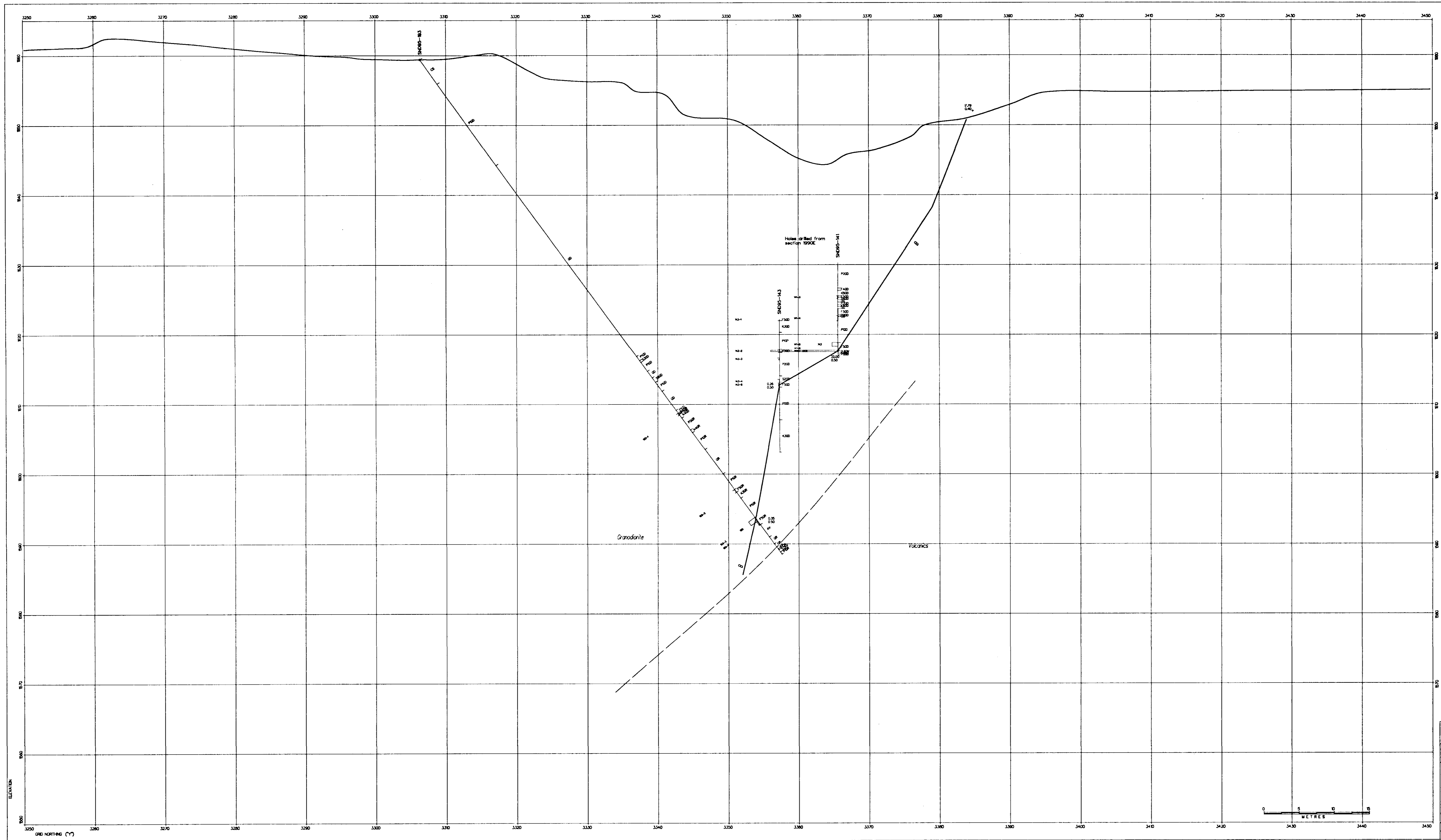
— DRILL HOLE
 — CORE
 — SAMPLE
 — LOG
 — LOG SHEET

NOTE: OLD ASSAYS AND AVERAGES < 1000 G/T ARE NOT POSTED

VOLOGICAL BRANCH
 ASSESSMENT REPORT

24,374

PART 2 OF 7



LEGEND

LITHOLOGY

CS GABRO
 MI MISSING CORE
 CB CHONDRULE

TERTIARY

AD ANKESITE DYKE dark green-gray to olive green, fine-grained to weakly porphyritic
 BR BRECCIA fragmented rock in a clay or clay-sterile rich matrix, commonly grades into gouge
 GD GOUGE clay-rich with clastic rock fragments, shear foliation or bedding may be evident
 QV QUARTZ VEN white to gray quartz with some calcite, commonly 100 to 200 µm with lesser diopside, pyroxene, apatite, garnet, titanite, rutile, zircon

JURASSIC

OSNEY LAKE BATHOLITH

AP APLITE pale to light gray, fine-grained, asexual, may grade into pegmatite
 FP FELDSPAR PORPHYRY pale to red, medium fine-grained, K-spar rich
 GC GRANODIORITE OBL. MASSIVE medium to dark gray, fine-grained up to 100 microns or hornblende
 GD GRANODIORITE medium to dark gray, fine to medium grained, up to 200 microns or hornblende
 GR GRANITE pale to medium gray, quartz - K-spar rich with some hornblende
 PG PEGMATITE pale to light gray, very coarse grained to megacrystic, quartz - K-spar - muscovite rich
 QM QUARTZ MONZONITE light to medium pinkish gray, coarse grained, irregular with up to 200 microns or hornblende

TRASSIC

NEOLA GROUP VOLCANICS

AV ANKESITE VOLCANIC dark gray-green to near black, very fine-grained, asexual
 (V) VOLCANIC VOLCANIC no stone, phenocrysts of plagioclase or hornblende to about 200 µm
 (V) VOLCANIC MIOCENE no stone, irregular (angular) with rough matrix, matrix larger crystals up to 200 µm
 pyrox - pyroxene - trachyte

ALTERATION CODES

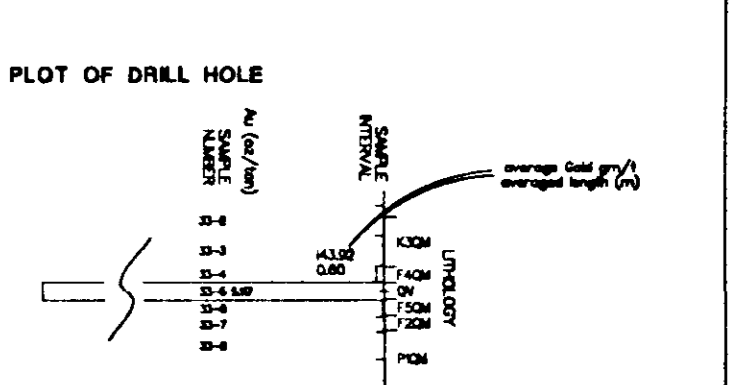
AO ANKESITE
 PZ PEGMATITE
 QM QUARTZ MONZONITE
 (n = 1 TO 5, MEAN TO MINOR)

PH PROLIFERATE
 SP SPHERULITE
 SW SWANSON
 SK SKELTON

BULFIDE CONTENT CODES (quartz veins)

L1 L1
 L2 L2
 L3 L3

100 100% Au
 200 20% Au
 300 3% Au
 400 0.3% Au



NOTE: GOLD ASSAYS AND AVERAGES < 0.05 g/t Au NOT POSTED

**GEOLOGICAL BRANCH
 ASSESSMENT REPORT**

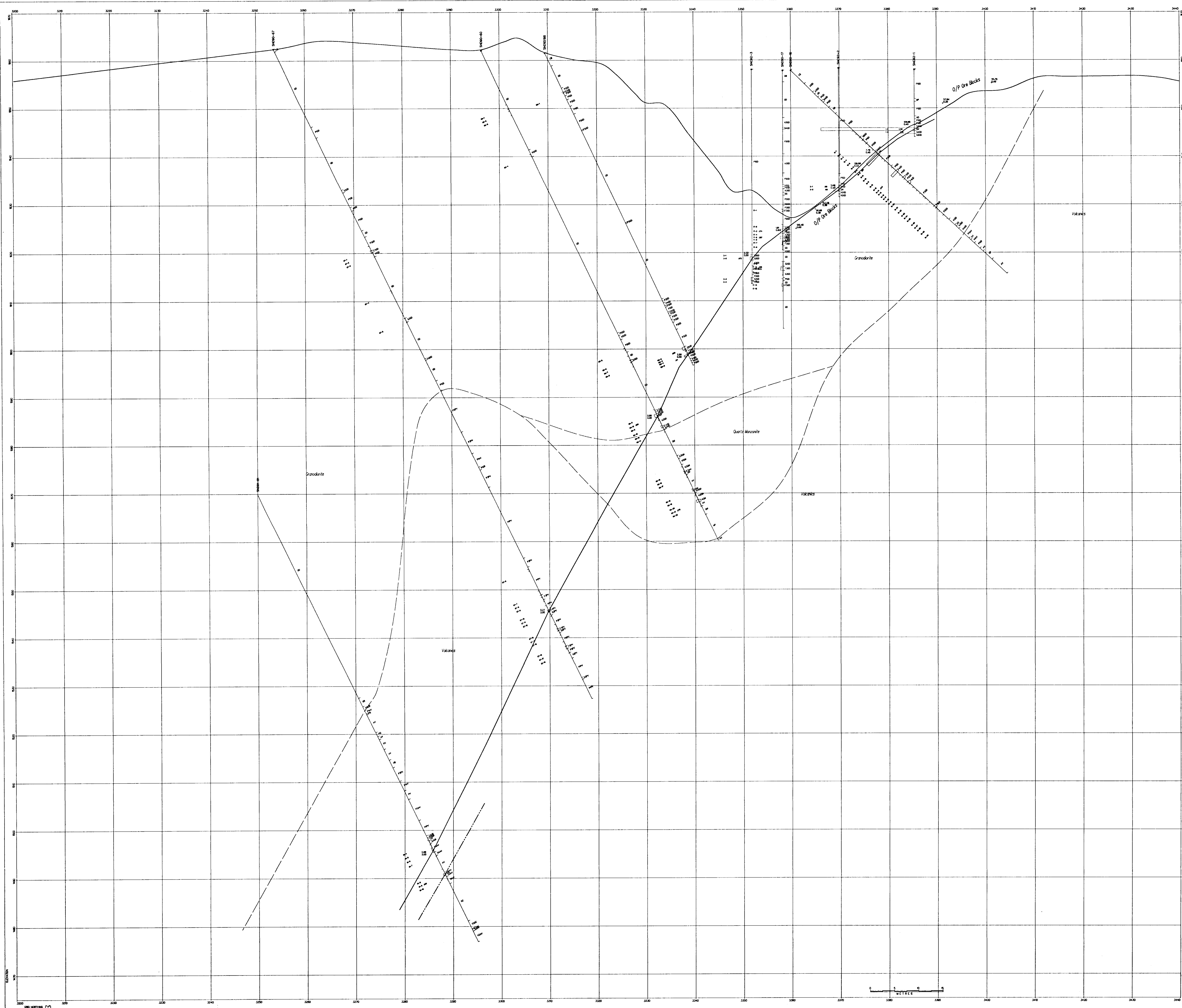
24,374
 PART 2 OF 7

FAIRFIELD MINERALS LTD.
 1000 - 1055 West Hastings Street, Vancouver, British Columbia V6E 2E9

SIWASH GOLD MINE
 SIWASH NORTH AREA
 DIAMOND DRILL SECTION
 2020E
 SCALE 1 : 250
 LOOKING WEST

Drawn by PWC
 February, 1998

Plate 4



- LEGEND**
- LITHOLOGY**
- GR GRANODIORITE
 - QZ QUARTZ MONZONITE
 - VL VULCANICS
- FAULTS**
- FD FAULT DISPLACEMENT
 - FC FAULT CONTACT
 - FF FAULT FRACTURE
 - FT FAULT TRENCH
 - FW FAULT WEAR
- SYMBOLS**
- DR DRILL HOLE
 - OP ORE BLOCK
 - VE VEGETATION
- ALTERATION CODES**
- AN ANDESITIC
 - EP EPITAXIAL
 - HY HYDROTHERMAL
 - OP ORE PRESENT
 - PH PHENOCRYSTIC
 - PO POGONITE
 - SA SALTER
 - SO SOULS
 - SP SPHALERITE
 - ST STANNITE
 - TR TRIPHYLE
 - VE VEGETATION
- SULFIDE CONTENT CODES (quartz veins)**
- 10 10-20%
 - 20 20-30%
 - 30 30-40%
 - 40 40-50%
 - 50 50-60%
 - 60 60-70%
 - 70 70-80%
 - 80 80-90%
 - 90 90-100%

GEOLOGICAL BRANCH
ASSESSMENT REPORT

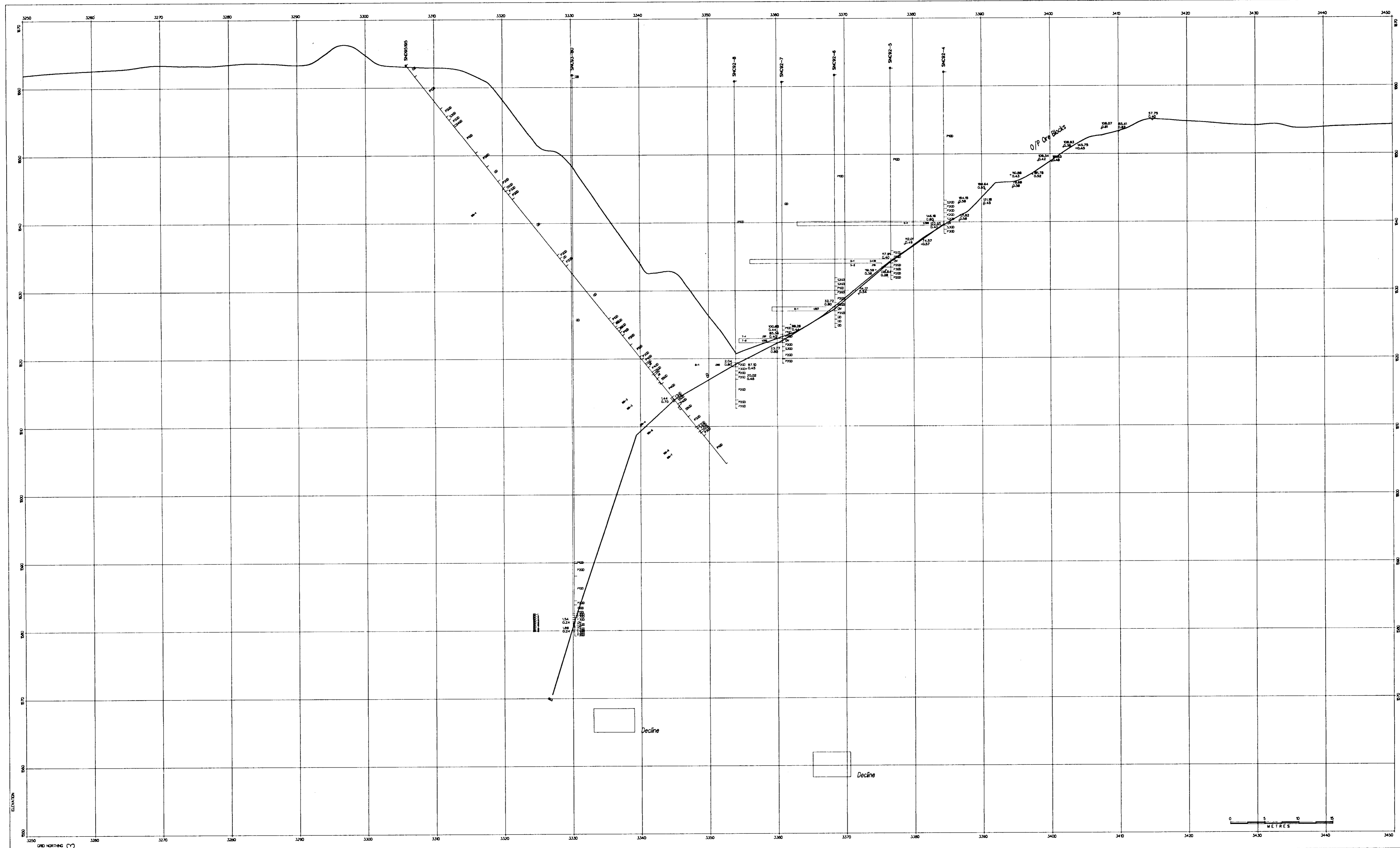
24,374
PART 2 OF 7

FAIRFIELD MINERALS LTD.
180 - 100 West Hastings Street, Vancouver, British Columbia V6E 2E9

SIWASH GOLD MINE
SIWASH NORTH AREA
DIAMOND DRILL SECTION
2040E
SCALE 1 : 250
LOOKING WEST

Drawn by PWO
February, 1998

Plate 5



LEGEND

LITHOLOGY

CS CARBONATE
 M MESSING CORE
 CB CHALK/BLENKIN

TERTIARY

AD ANDKITE DYKE dark greenish-grey to olive green fine-grained to waxy porphyritic
 BR BRECCIA fragmented rock in a clay or clay-siltstone rich matrix, commonly green clay shale
 GG GULGE clay-rich with numerous rock fragments, shear foliation or banding may be evident
 QV QUARTZ VEH white to grey quartz with some mineralogy, 10% to 25% quartz with minor chlorite, pyrite, sphalerite, galena, barite etc. in matrix

TRASSIC

OSPREY LAKE BATHOLITH

AP APULITE pink to light grey, fine grained, asexual, may grade to amphibole
 FP FELDSPAR PORPHYRY pink to red, medium fine-grained, 1-2 mm rich
 GC GRANODIORITE DOLL WASH medium to dark grey, fine grained up to 25% blocks or horizons
 GD GRANODIORITE medium to dark grey, fine to medium grained, up to 25% blocks or horizons
 GR GRANITE pink to brown grey, quartz - 1-2 mm rich with some hornblende
 PG PEGMATITE pink to light grey, very coarse grained to megacrystic, quartz - 1-2 mm - muscovite rich
 QM QUARTZ MONZONITE light to medium brown grey, coarse grained, megacrystic with up to 25% blocks or horizons

TRASSIC

NEOLA GROUP VOLCANICS

AV ANKESITE VOLCANICS dark grey-green to black, very fine-grained to aphanitic
 (V) ANKESITE VOLCANIC, no above phenocrysts of plagioclase or hornblende to about 25%
 (M) VOLCANIC BRECCIA as above, brecciated (primary) with granitic matrix, matrix may contain up to 25% quartz - pyrite - chlorite

ALTERATION CODES

(A) ANKESITE (P) PEGMATITE
 (B) BLENKIN (S) SERICITIC
 (C) CARBONATE (T) TERNARY
 (D) DOLLOMITIC (U) UNALTERED
 (E) EARTHEN (V) VOLCANIC
 (F) FELDSPAR (W) WAXY
 (G) GRANODIORITE (X) SULFIDATION
 (H) HORNBLANDIC
 (I) INTERMEDIATE
 (J) JASPER
 (K) KALBAR
 (L) LITHOLOGICALLY UNALTERED
 (M) MESSING
 (N) NEOLA
 (O) ORE
 (P) PEGMATITE
 (Q) QUARTZ MONZONITE
 (R) RHYOLITIC
 (S) SERICITIC
 (T) TERNARY
 (U) UNALTERED
 (V) VOLCANIC
 (W) WAXY
 (X) SULFIDATION
 (Y) YOLK
 (Z) ZONAL

(n = 1 TO 5, WEAK TO INTENSE)

SULFIDE CONTENT CODES (quartz veins)

0.1-0.5% Sulfide
 0.5-1.0% Sulfide
 1.0-2.0% Sulfide
 2.0-5.0% Sulfide
 5.0-10.0% Sulfide
 10.0-20.0% Sulfide
 20.0-50.0% Sulfide
 50.0-100.0% Sulfide

SYMBOLS

--- LITHOLOGIC CONTACT
 --- TRACE OF MINERALIZED STRUCTURE (line types differ by zone, individual areas labeled on section)
 --- FAULT OR SHEAR

PLOT OF DRILL HOLE

NOTE: GOLD ASSAYS AND AVERAGES < 0.05 g/t are NOT POSTED

GEOLOGICAL BRANCH ASSESSMENT REPORT

24,374

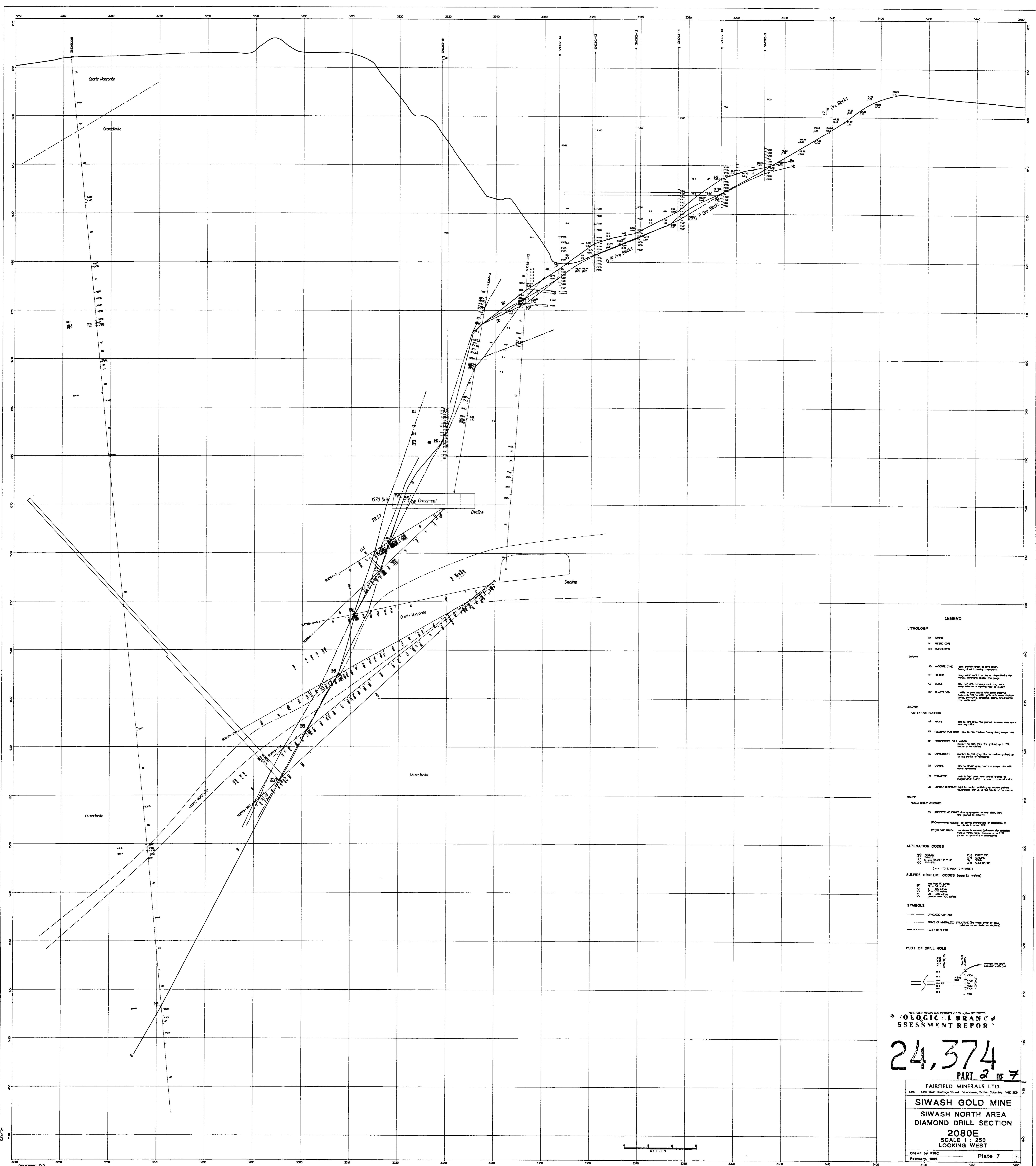
PART 2 OF 7

FAIRFIELD MINERALS LTD.
 1900 - 1055 West Hastings Street Vancouver, British Columbia V6C 2E9

SIWASH GOLD MINE

SIWASH NORTH AREA
 DIAMOND DRILL SECTION
 2060E
 SCALE 1 : 250
 LOOKING WEST

Drawn by PWC February, 1988 Plate 6



LEGEND

LITHOLOGY

- Q1 QUARTZ MONZONITE
- Q2 QUARTZ MONZONITE
- GR GRANITE

STRATIGRAPHY

- U1 UNCONFORMITY
- U2 UNCONFORMITY
- U3 UNCONFORMITY
- U4 UNCONFORMITY
- U5 UNCONFORMITY
- U6 UNCONFORMITY
- U7 UNCONFORMITY
- U8 UNCONFORMITY
- U9 UNCONFORMITY
- U10 UNCONFORMITY
- U11 UNCONFORMITY
- U12 UNCONFORMITY
- U13 UNCONFORMITY
- U14 UNCONFORMITY
- U15 UNCONFORMITY
- U16 UNCONFORMITY
- U17 UNCONFORMITY
- U18 UNCONFORMITY
- U19 UNCONFORMITY
- U20 UNCONFORMITY
- U21 UNCONFORMITY
- U22 UNCONFORMITY
- U23 UNCONFORMITY
- U24 UNCONFORMITY
- U25 UNCONFORMITY
- U26 UNCONFORMITY
- U27 UNCONFORMITY
- U28 UNCONFORMITY
- U29 UNCONFORMITY
- U30 UNCONFORMITY
- U31 UNCONFORMITY
- U32 UNCONFORMITY
- U33 UNCONFORMITY
- U34 UNCONFORMITY
- U35 UNCONFORMITY
- U36 UNCONFORMITY
- U37 UNCONFORMITY
- U38 UNCONFORMITY
- U39 UNCONFORMITY
- U40 UNCONFORMITY
- U41 UNCONFORMITY
- U42 UNCONFORMITY
- U43 UNCONFORMITY
- U44 UNCONFORMITY
- U45 UNCONFORMITY
- U46 UNCONFORMITY
- U47 UNCONFORMITY
- U48 UNCONFORMITY
- U49 UNCONFORMITY
- U50 UNCONFORMITY

STRUCTURE

- CL CLINE
- CL1 CLINE
- CL2 CLINE
- CL3 CLINE
- CL4 CLINE
- CL5 CLINE
- CL6 CLINE
- CL7 CLINE
- CL8 CLINE
- CL9 CLINE
- CL10 CLINE
- CL11 CLINE
- CL12 CLINE
- CL13 CLINE
- CL14 CLINE
- CL15 CLINE
- CL16 CLINE
- CL17 CLINE
- CL18 CLINE
- CL19 CLINE
- CL20 CLINE
- CL21 CLINE
- CL22 CLINE
- CL23 CLINE
- CL24 CLINE
- CL25 CLINE
- CL26 CLINE
- CL27 CLINE
- CL28 CLINE
- CL29 CLINE
- CL30 CLINE
- CL31 CLINE
- CL32 CLINE
- CL33 CLINE
- CL34 CLINE
- CL35 CLINE
- CL36 CLINE
- CL37 CLINE
- CL38 CLINE
- CL39 CLINE
- CL40 CLINE
- CL41 CLINE
- CL42 CLINE
- CL43 CLINE
- CL44 CLINE
- CL45 CLINE
- CL46 CLINE
- CL47 CLINE
- CL48 CLINE
- CL49 CLINE
- CL50 CLINE

ALTERATION CODES

- A1 ALTERATION CODE
- A2 ALTERATION CODE
- A3 ALTERATION CODE
- A4 ALTERATION CODE
- A5 ALTERATION CODE
- A6 ALTERATION CODE
- A7 ALTERATION CODE
- A8 ALTERATION CODE
- A9 ALTERATION CODE
- A10 ALTERATION CODE
- A11 ALTERATION CODE
- A12 ALTERATION CODE
- A13 ALTERATION CODE
- A14 ALTERATION CODE
- A15 ALTERATION CODE
- A16 ALTERATION CODE
- A17 ALTERATION CODE
- A18 ALTERATION CODE
- A19 ALTERATION CODE
- A20 ALTERATION CODE
- A21 ALTERATION CODE
- A22 ALTERATION CODE
- A23 ALTERATION CODE
- A24 ALTERATION CODE
- A25 ALTERATION CODE
- A26 ALTERATION CODE
- A27 ALTERATION CODE
- A28 ALTERATION CODE
- A29 ALTERATION CODE
- A30 ALTERATION CODE
- A31 ALTERATION CODE
- A32 ALTERATION CODE
- A33 ALTERATION CODE
- A34 ALTERATION CODE
- A35 ALTERATION CODE
- A36 ALTERATION CODE
- A37 ALTERATION CODE
- A38 ALTERATION CODE
- A39 ALTERATION CODE
- A40 ALTERATION CODE
- A41 ALTERATION CODE
- A42 ALTERATION CODE
- A43 ALTERATION CODE
- A44 ALTERATION CODE
- A45 ALTERATION CODE
- A46 ALTERATION CODE
- A47 ALTERATION CODE
- A48 ALTERATION CODE
- A49 ALTERATION CODE
- A50 ALTERATION CODE

SULFIDE CONTENT CODES (SULFIDE VEINS)

- S1 SULFIDE CONTENT CODE
- S2 SULFIDE CONTENT CODE
- S3 SULFIDE CONTENT CODE
- S4 SULFIDE CONTENT CODE
- S5 SULFIDE CONTENT CODE
- S6 SULFIDE CONTENT CODE
- S7 SULFIDE CONTENT CODE
- S8 SULFIDE CONTENT CODE
- S9 SULFIDE CONTENT CODE
- S10 SULFIDE CONTENT CODE
- S11 SULFIDE CONTENT CODE
- S12 SULFIDE CONTENT CODE
- S13 SULFIDE CONTENT CODE
- S14 SULFIDE CONTENT CODE
- S15 SULFIDE CONTENT CODE
- S16 SULFIDE CONTENT CODE
- S17 SULFIDE CONTENT CODE
- S18 SULFIDE CONTENT CODE
- S19 SULFIDE CONTENT CODE
- S20 SULFIDE CONTENT CODE
- S21 SULFIDE CONTENT CODE
- S22 SULFIDE CONTENT CODE
- S23 SULFIDE CONTENT CODE
- S24 SULFIDE CONTENT CODE
- S25 SULFIDE CONTENT CODE
- S26 SULFIDE CONTENT CODE
- S27 SULFIDE CONTENT CODE
- S28 SULFIDE CONTENT CODE
- S29 SULFIDE CONTENT CODE
- S30 SULFIDE CONTENT CODE
- S31 SULFIDE CONTENT CODE
- S32 SULFIDE CONTENT CODE
- S33 SULFIDE CONTENT CODE
- S34 SULFIDE CONTENT CODE
- S35 SULFIDE CONTENT CODE
- S36 SULFIDE CONTENT CODE
- S37 SULFIDE CONTENT CODE
- S38 SULFIDE CONTENT CODE
- S39 SULFIDE CONTENT CODE
- S40 SULFIDE CONTENT CODE
- S41 SULFIDE CONTENT CODE
- S42 SULFIDE CONTENT CODE
- S43 SULFIDE CONTENT CODE
- S44 SULFIDE CONTENT CODE
- S45 SULFIDE CONTENT CODE
- S46 SULFIDE CONTENT CODE
- S47 SULFIDE CONTENT CODE
- S48 SULFIDE CONTENT CODE
- S49 SULFIDE CONTENT CODE
- S50 SULFIDE CONTENT CODE

SYMBOLS

- SYMBOL 1
- SYMBOL 2
- SYMBOL 3
- SYMBOL 4
- SYMBOL 5
- SYMBOL 6
- SYMBOL 7
- SYMBOL 8
- SYMBOL 9
- SYMBOL 10
- SYMBOL 11
- SYMBOL 12
- SYMBOL 13
- SYMBOL 14
- SYMBOL 15
- SYMBOL 16
- SYMBOL 17
- SYMBOL 18
- SYMBOL 19
- SYMBOL 20
- SYMBOL 21
- SYMBOL 22
- SYMBOL 23
- SYMBOL 24
- SYMBOL 25
- SYMBOL 26
- SYMBOL 27
- SYMBOL 28
- SYMBOL 29
- SYMBOL 30
- SYMBOL 31
- SYMBOL 32
- SYMBOL 33
- SYMBOL 34
- SYMBOL 35
- SYMBOL 36
- SYMBOL 37
- SYMBOL 38
- SYMBOL 39
- SYMBOL 40
- SYMBOL 41
- SYMBOL 42
- SYMBOL 43
- SYMBOL 44
- SYMBOL 45
- SYMBOL 46
- SYMBOL 47
- SYMBOL 48
- SYMBOL 49
- SYMBOL 50

PLOT OF DRILL HOLE

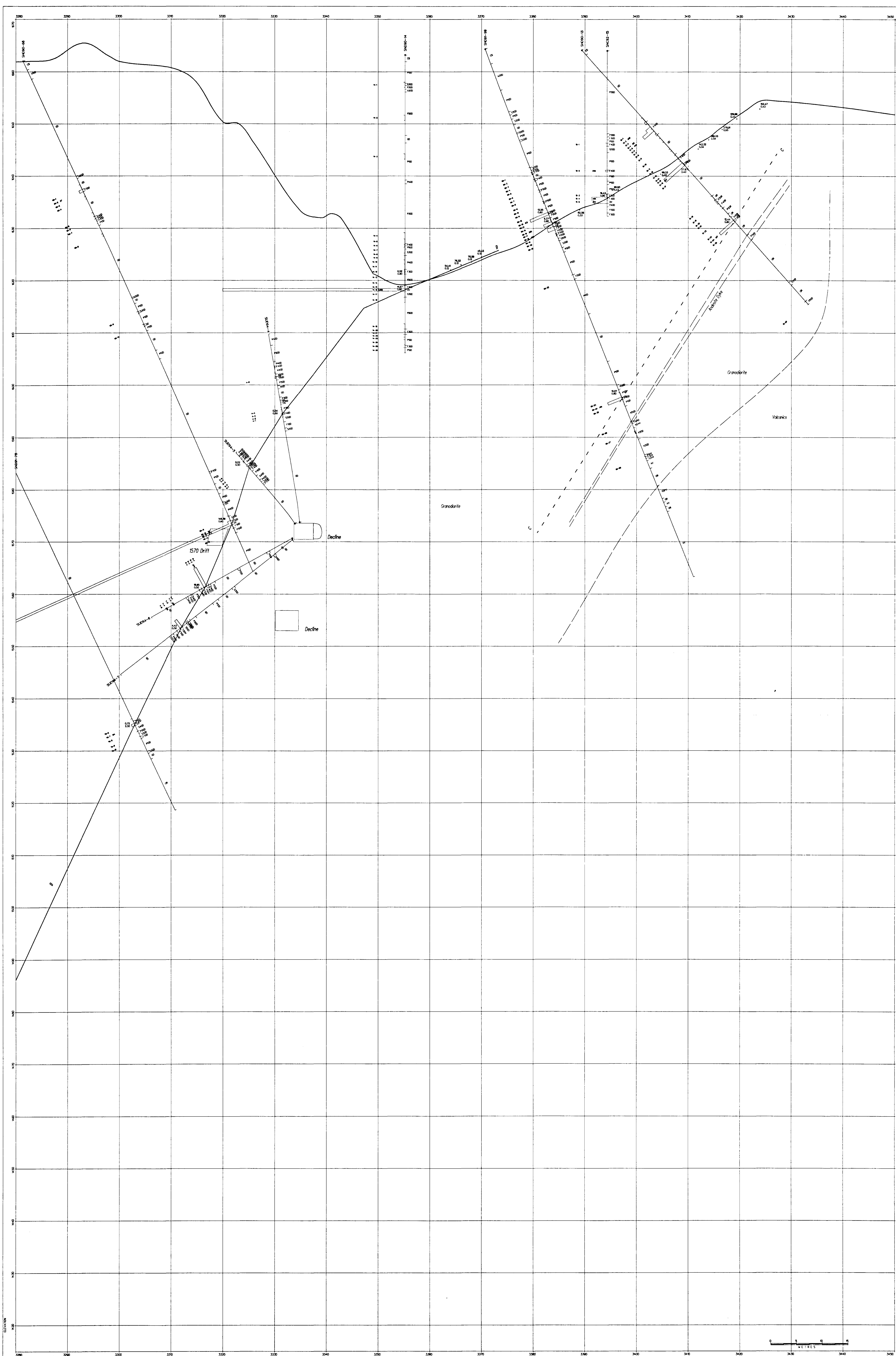
24,374
PART 2 OF 7

FAIRFIELD MINERALS LTD.
1900 - 500 West Hastings Street, Vancouver, British Columbia, V6C 2E8

SIWASH GOLD MINE
SIWASH NORTH AREA
DIAMOND DRILL SECTION
2080E
SCALE 1 : 250
LOOKING WEST

Drawn by PWC
February, 1988

Plate 7



- LEGEND**
- LITHOLOGY**
- CG GNEISS
 - W MARBLE
 - OR ORYCTOLITE
- TOPOGRAPHY**
- AD ANTI-DIP
 - BE BENCH
 - DI DITCH
 - DV QUARRY VON
- JANUARY**
- AF ARITE
 - FP FELDSPAR PEGMATITE
 - GC GRANODIORITE
 - GR GRANITE
 - MG MEGACRYSTIC
 - QU QUARTZ VEIN
- TRACE**
- AV ANDRETTA VOLCANICS
- ALTERATION CODES**
- AO ANOMALOUS
 - CO CHLORITE
 - DO DOLIC
 - FO FELDSPAR
 - GO GYPSUM
 - HO HORNBLAND
 - MO MICA
 - PO PYRITE
 - SO SODIUM
 - TO TITANITE
 - VO VOLCANIC
- SULFIDE CONTENT CODES (quartz veins)**
- 10 10%
 - 20 20%
 - 30 30%
 - 40 40%
 - 50 50%
 - 60 60%
 - 70 70%
 - 80 80%
 - 90 90%
 - 100 100%
- SYMBOLS**
- LITHOLOGICAL CONTACT
 - TRACE OF UNDEVELOPED STRUCTURE (see notes for details)
 - FAULT OR SEAM
- PLOT OF DRILL HOLE**
-
- SEE DRILL LOGS AND APPROXIMATE ELEVATION OF DRILL HOLES NOTED**

**VOLOGICAL BRANCH
ASSESSMENT REPORT**

24,374

PART 2 OF 7

FAIRFIELD MINERALS LTD.
100 - 1000 West Hastings Street, Vancouver, B.C. Canada V6E 2B9

SIWASH GOLD MINE
SIWASH NORTH AREA
DIAMOND DRILL SECTION
2090E North Half
SCALE 1 : 250
LOOKING WEST

Drawn by PWC
February, 1988

Plate 8

LEGEND

LITHOLOGY

CS CARBONATE
 M METAL ORE
 S SANDSTONE

TOPOGRAPHY

KO INDEXED ONE
 KP INDEXED TWO
 KQ INDEXED THREE
 KR INDEXED FOUR
 KS INDEXED FIVE
 KT INDEXED SIX
 KU INDEXED SEVEN
 KV INDEXED EIGHT
 KW INDEXED NINE
 KX INDEXED TEN
 KY INDEXED ELEVEN
 KZ INDEXED TWELVE

JANICE

JANICE - see legend

VEGETATION

AV VEGETATION - see legend

ALTERATION CODES

AO ALTERATION ONE
 AP ALTERATION TWO
 AQ ALTERATION THREE
 AR ALTERATION FOUR
 AS ALTERATION FIVE
 AT ALTERATION SIX
 AU ALTERATION SEVEN
 AV ALTERATION EIGHT
 AW ALTERATION NINE
 AX ALTERATION TEN
 AY ALTERATION ELEVEN
 AZ ALTERATION TWELVE

SULFIDE CONTENT CODES (QUARTZ VENA)

QA QUARTZ VENA
 QB QUARTZ VENA
 QC QUARTZ VENA
 QD QUARTZ VENA
 QE QUARTZ VENA
 QF QUARTZ VENA
 QG QUARTZ VENA
 QH QUARTZ VENA
 QI QUARTZ VENA
 QJ QUARTZ VENA
 QK QUARTZ VENA
 QL QUARTZ VENA
 QM QUARTZ VENA
 QN QUARTZ VENA
 QO QUARTZ VENA
 QP QUARTZ VENA
 QQ QUARTZ VENA
 QR QUARTZ VENA
 QS QUARTZ VENA
 QT QUARTZ VENA
 QU QUARTZ VENA
 QV QUARTZ VENA
 QW QUARTZ VENA
 QX QUARTZ VENA
 QY QUARTZ VENA
 QZ QUARTZ VENA

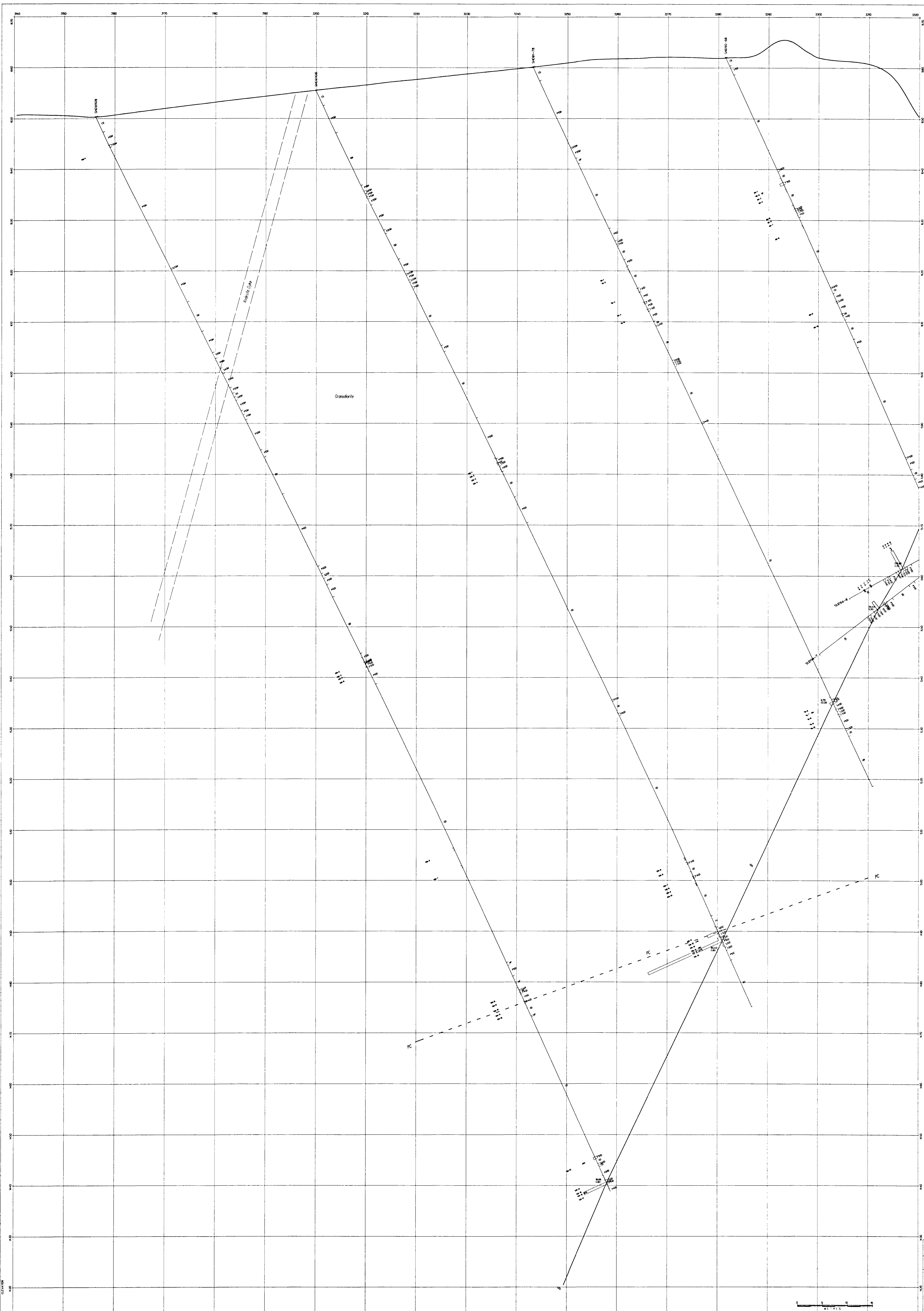
SYMBOLS

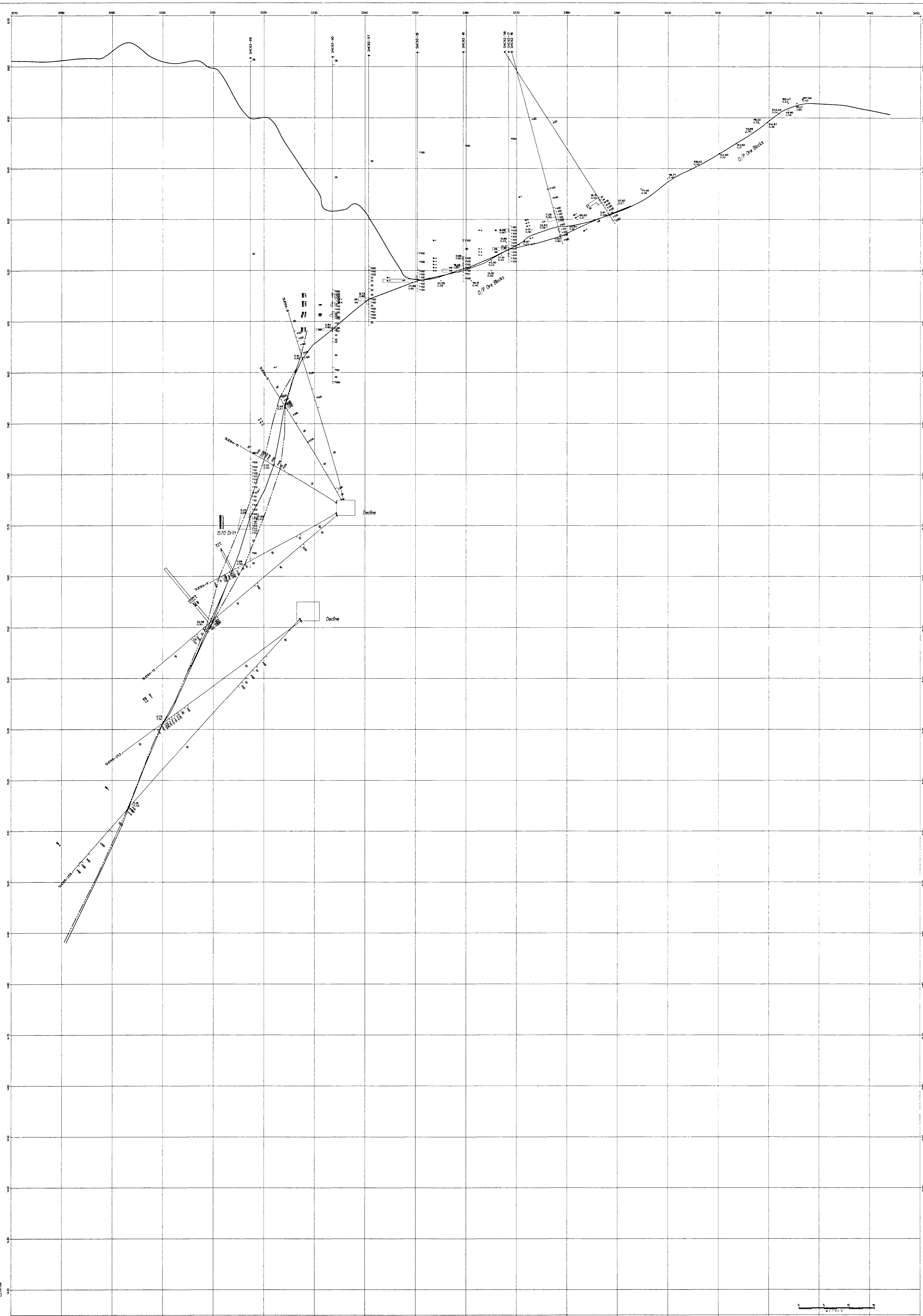
—— LITHOLOGICAL CONTACT
 —— TRACE OF UNFOLDED STRUCTURE (see legend for symbols)
 - - - - - FAULT OR BREAK

PLOT OF DRILL HOLE

DRILL HOLE
 LITHOLOGICAL RECORD
 ALTERATION RECORD
 SULFIDE CONTENT RECORD

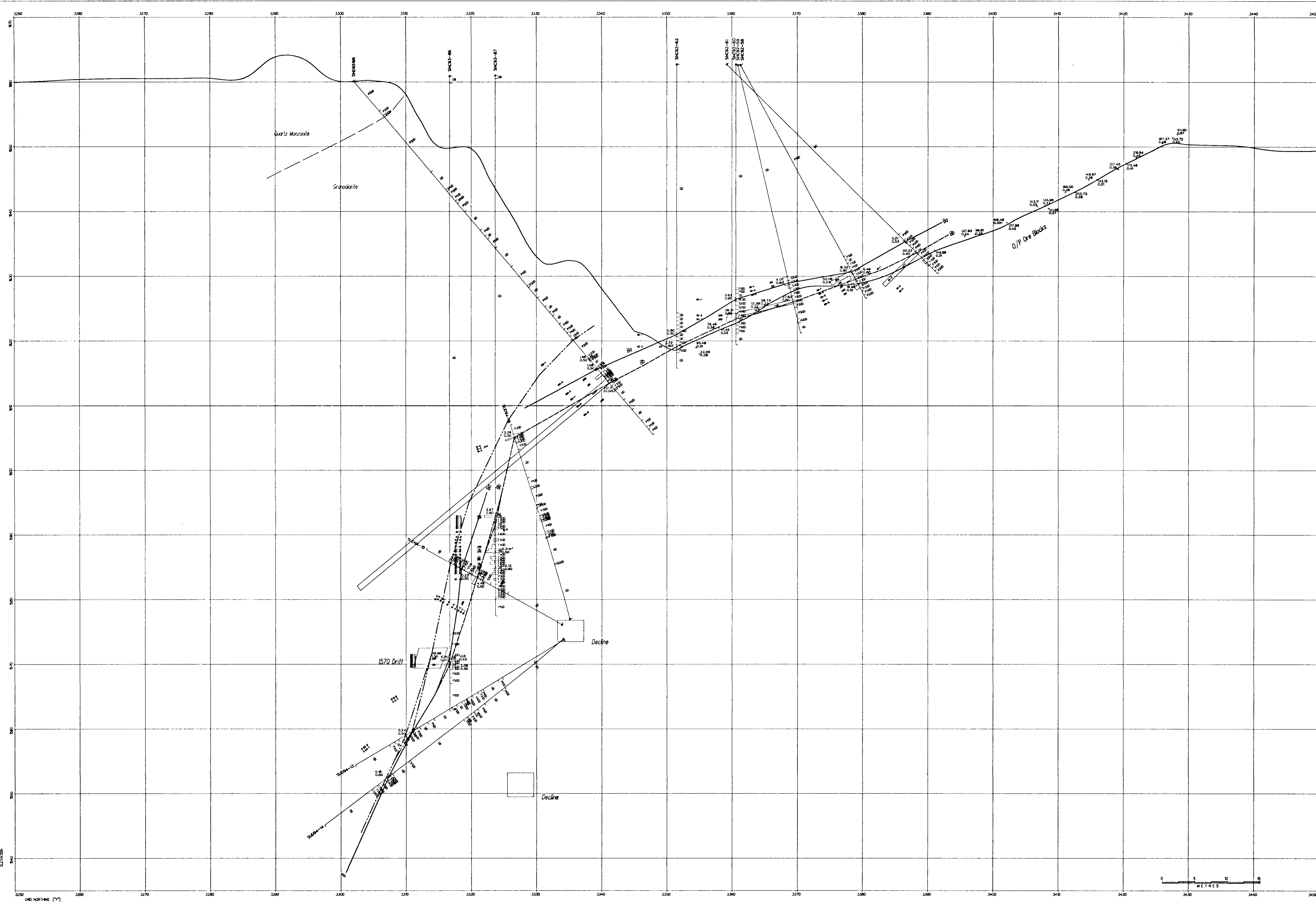
NOTE: OLD ASSAYS AND ANALYSES < 0.05% Au/Ag NOT PLOTTED





- LEGEND**
- LITHOLOGY**
- CS CONG
 - W WEING CONG
 - OS OVERLAIN
- TEXTURE**
- AO ANDERTS ONE
 - BO BREGDA
 - CO COLE
 - DO QUARTZ VEN
- STRATIGRAPHIC**
- AP ARITE
 - BP BREGDA
 - CP COLE
 - DP QUARTZ VEN
- ALTERATION CODES**
- AO ANDERTS ONE
 - BO BREGDA
 - CO COLE
 - DO QUARTZ VEN
- SULFIDE CONTENT CODES (quartz veins)**
- 01
 - 02
 - 03
 - 04
 - 05
 - 06
 - 07
 - 08
 - 09
 - 10
 - 11
 - 12
 - 13
 - 14
 - 15
 - 16
 - 17
 - 18
 - 19
 - 20
 - 21
 - 22
 - 23
 - 24
 - 25
 - 26
 - 27
 - 28
 - 29
 - 30
 - 31
 - 32
 - 33
 - 34
 - 35
 - 36
 - 37
 - 38
 - 39
 - 40
 - 41
 - 42
 - 43
 - 44
 - 45
 - 46
 - 47
 - 48
 - 49
 - 50
 - 51
 - 52
 - 53
 - 54
 - 55
 - 56
 - 57
 - 58
 - 59
 - 60
 - 61
 - 62
 - 63
 - 64
 - 65
 - 66
 - 67
 - 68
 - 69
 - 70
 - 71
 - 72
 - 73
 - 74
 - 75
 - 76
 - 77
 - 78
 - 79
 - 80
 - 81
 - 82
 - 83
 - 84
 - 85
 - 86
 - 87
 - 88
 - 89
 - 90
 - 91
 - 92
 - 93
 - 94
 - 95
 - 96
 - 97
 - 98
 - 99
 - 100
- SYMBOLS**
- LITHOLOGIC CONTACT
 - TRACE OF UNMETAMORPHIC STRUCTURE (this symbol refers to some conventional geological symbols)
 - FAULT OR BREAK
- PLOT OF DRILL HOLE**
-
- NEED GOLD ASSAYS AND ANALYSES - SEE REPORT NOT POSTED**

Geologic Branch
Assessment Report
24,374
PART 2 OF 7



LEGEND

LITHOLOGY

CS CASING
 M MESSING COPE
 OS OVERHEAD

TERTIARY

AO ANDESITE DYKE dark gray-green to olive green, fine grained to medium crystalline
 BR BRECCIA fragmented rock in a clay or clay-siltstone rich matrix, commonly grades into gouge
 GC GOUGE clay-rich with numerous rock fragments, often tabular or platy, may be sandy
 QV QUARTZ VEIN white to gray quartz with some orthoclase, commonly 100 to 250 µm with lesser orthopyroxene, amphibole, epidote, garnet, calcic clinopyroxene, ilmenite, rutile

JURASSIC

OSPREY LAKE BATHOLITH

AP APLITE pink to light gray, fine grained, microcline, may grade into pegmatite
 FP FELDSPAR PORPHYRY pink to red, medium fine grained, k-spar rich
 GC GRANODIORITE DIEL MASHIN medium to dark gray, fine grained up to 100 microns or more coarse
 GD GRANODIORITE medium to dark gray, fine to medium grained, up to 250 microns or more coarse
 GR GRANITE pink to brown gray, quartz - k-spar rich with some hornblende
 PG PEGMATITE pink to light gray, very coarse grained to megacrystic, quartz - k-spar - fluorite rich
 QM QUARTZ MONZONITE light to medium brown gray, coarse grained, replacement with up to 250 microns or more coarse

TRASSIC

NOVA GROUP VOLCANICS

AV ANDESITIC VOLCANIC dark gray-green to near black, very fine grained to aphanitic
 (P) PORPHYRY VOLCANIC as above, porphyry of plagioclase or hornblende to about 250 microns
 (V) VOLCANIC BRECCIA as above, brecciated (primary) with granitic matrix, matrix may contain up to 250 microns pyrite - pyrrhotite - chalcopyrite

ALTERATION CODES

AO ANDESITIC
 PZ PEGMATITIC
 PK K-SPARE STABLE PHTHALIC
 PO POTASSIC
 (= 1 TO 5, WEAK TO INTENSE)

SULFIDE CONTENT CODES (quartz veins)

Y1 less than 1% sulfide
 Y2 1 - 2% sulfide
 Y3 2 - 5% sulfide
 Y4 5 - 10% sulfide
 Y5 greater than 10% sulfide

SYMBOLS

--- LITHOLOGIC CONTACT
 --- TRACE OF MINERALIZED STRUCTURE (line types differ by zone, individual zones coded on section)
 - - - FAULT OR SHEAR

PLOT OF DRILL HOLE

Diagram showing a vertical cross-section of a drill hole with depth (0 to 100m) and lithology (LITHOLOGY) plotted against depth. It also shows 'SAMPLE' locations and 'METRE GOLD ASSAYS AND ADVANCES < 0.05 g/t Au NOT POSTED'.

LOGICAL BRANCH
 ASSESSMENT REPORT

24,374
 PART 2 OF 7

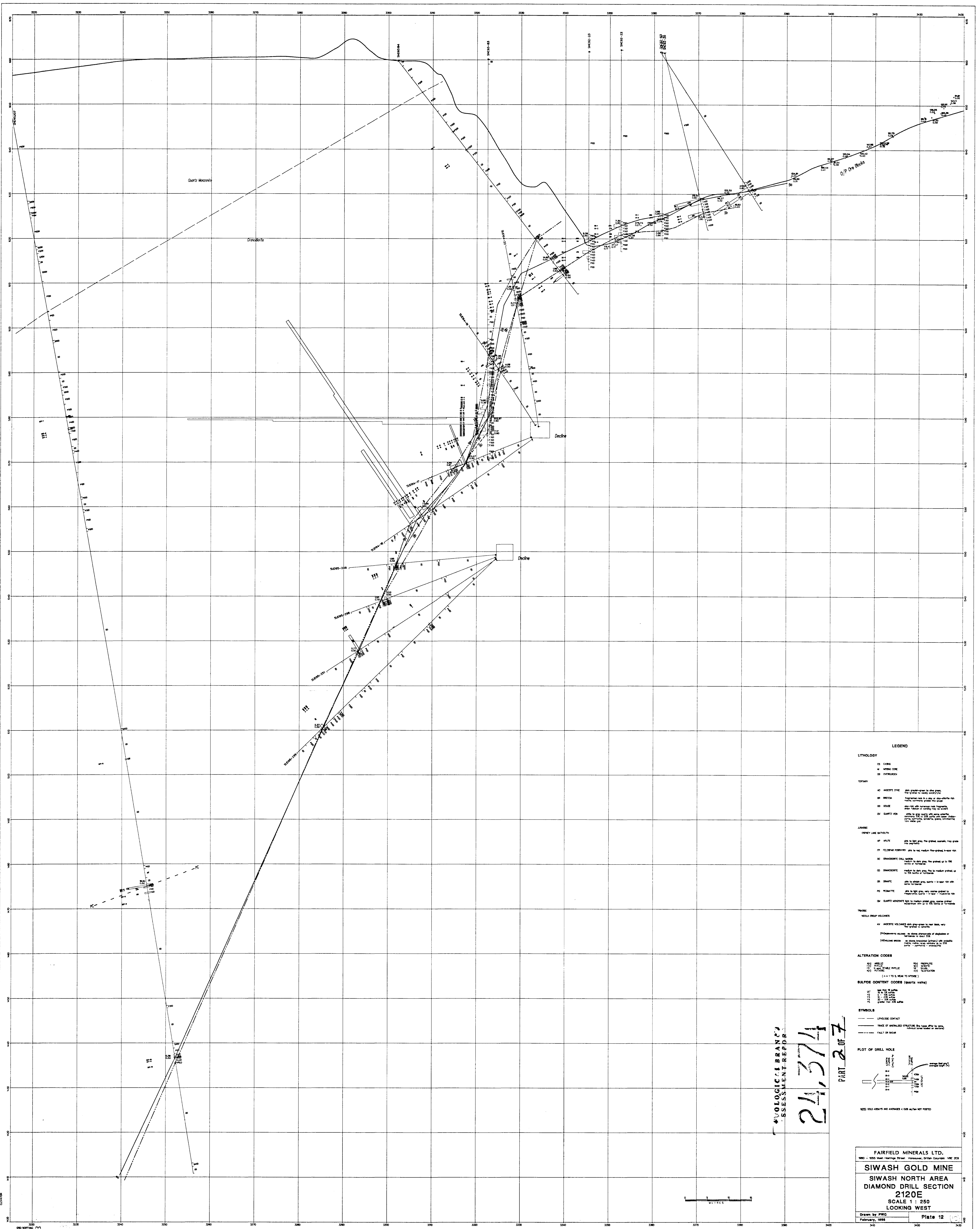
FAIRFIELD MINERALS LTD.
 1800 - 1055 West Hastings Street, Vancouver, British Columbia V6E 2S9

SIWASH GOLD MINE
 SIWASH NORTH AREA
 DIAMOND DRILL SECTION
 2110E
 SCALE 1 : 250
 LOOKING WEST

Drawn by PWD
 February, 1988

Plate 11





LEGEND

LITHOLOGY

CM QUARTZ MONZONITE
GR GRANITE
D/FP D/P Ore Blocks

ALTERATION

ANKERITE
AK ANKERITE - fine crystalline to fibrous, micaceous, white to cream color, common in upper sections of quartz veins.

AZURITE
AZ AZURITE - fine crystalline to fibrous, blue to green color, common in upper sections of quartz veins.

MALACHITE
MA MALACHITE - fine crystalline to fibrous, green color, common in upper sections of quartz veins.

OTHER ALTERATION

AS AZURITE - fine crystalline to fibrous, blue to green color, common in upper sections of quartz veins.

MA MALACHITE - fine crystalline to fibrous, green color, common in upper sections of quartz veins.

SYMBOLS

--- LITHOLOGIC CONTACT
--- TRACE OF UNRECORDED VEIN (No assay data or lithologic data)
--- FAULT OR SEAM

PLOT OF DRELL HOLE

--- DIRECTION OF DRILL
--- DIRECTION OF DRILL
--- DIRECTION OF DRILL

SEE OLD ASSAYS AND ANALYSES - USE ONLY FOR REFERENCE

GEOLOGICAL BRANCH'S ASSESSMENT REPORT

24,374

PART 2 OF 7

FAIRFIELD MINERALS LTD.
960 - 1005 West Hastings Street, Vancouver, British Columbia, V6C 2G3

SIWASH GOLD MINE

SIWASH NORTH AREA

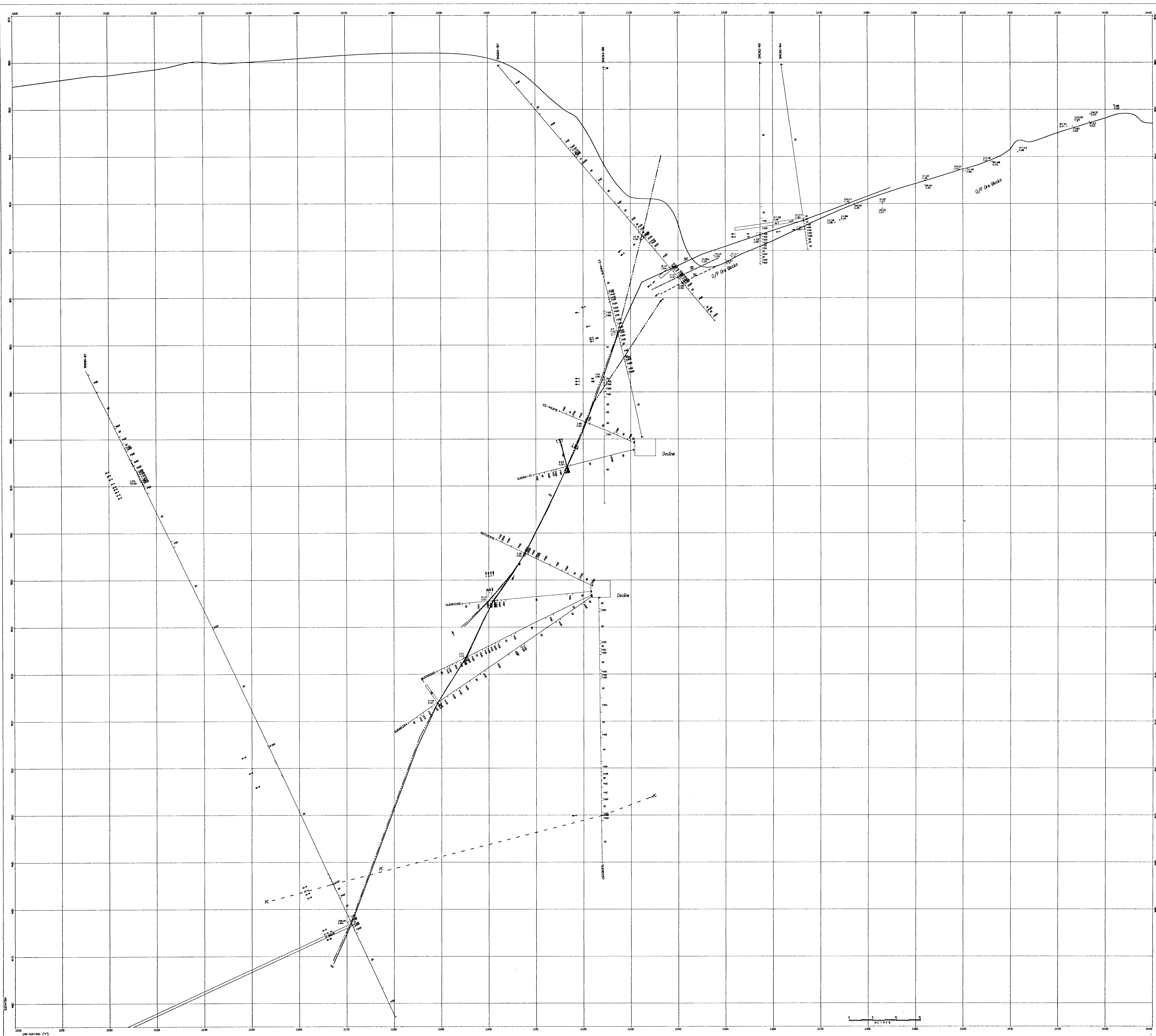
DIAMOND DRILL SECTION 2120E

SCALE 1 : 250

LOOKING WEST

Drawn by PWD
February 1988

Plate 12



LEGEND

LITHOLOGY

CS GNEISS
 M MEDIUM GNEISS
 GR GRANODIORITE

TUFFARY

AO ANDREWS TUFF
 BR BRICK TUFF
 CL CLAY TUFF
 CR CRATER TUFF
 DR DRIFT TUFF

LACROFTS

LA1 LA1
 LA2 LA2
 LA3 LA3
 LA4 LA4
 LA5 LA5
 LA6 LA6
 LA7 LA7
 LA8 LA8
 LA9 LA9
 LA10 LA10
 LA11 LA11
 LA12 LA12
 LA13 LA13
 LA14 LA14
 LA15 LA15
 LA16 LA16
 LA17 LA17
 LA18 LA18
 LA19 LA19
 LA20 LA20
 LA21 LA21
 LA22 LA22
 LA23 LA23
 LA24 LA24
 LA25 LA25
 LA26 LA26
 LA27 LA27
 LA28 LA28
 LA29 LA29
 LA30 LA30
 LA31 LA31
 LA32 LA32
 LA33 LA33
 LA34 LA34
 LA35 LA35
 LA36 LA36
 LA37 LA37
 LA38 LA38
 LA39 LA39
 LA40 LA40
 LA41 LA41
 LA42 LA42
 LA43 LA43
 LA44 LA44
 LA45 LA45
 LA46 LA46
 LA47 LA47
 LA48 LA48
 LA49 LA49
 LA50 LA50
 LA51 LA51
 LA52 LA52
 LA53 LA53
 LA54 LA54
 LA55 LA55
 LA56 LA56
 LA57 LA57
 LA58 LA58
 LA59 LA59
 LA60 LA60
 LA61 LA61
 LA62 LA62
 LA63 LA63
 LA64 LA64
 LA65 LA65
 LA66 LA66
 LA67 LA67
 LA68 LA68
 LA69 LA69
 LA70 LA70
 LA71 LA71
 LA72 LA72
 LA73 LA73
 LA74 LA74
 LA75 LA75
 LA76 LA76
 LA77 LA77
 LA78 LA78
 LA79 LA79
 LA80 LA80
 LA81 LA81
 LA82 LA82
 LA83 LA83
 LA84 LA84
 LA85 LA85
 LA86 LA86
 LA87 LA87
 LA88 LA88
 LA89 LA89
 LA90 LA90
 LA91 LA91
 LA92 LA92
 LA93 LA93
 LA94 LA94
 LA95 LA95
 LA96 LA96
 LA97 LA97
 LA98 LA98
 LA99 LA99
 LA100 LA100

ALTERATION CODES

AO ANDREWS TUFF
 BR BRICK TUFF
 CL CLAY TUFF
 CR CRATER TUFF
 DR DRIFT TUFF

SULFIDE CONTENT CODES (QUARTZ %)

100%
 90%
 80%
 70%
 60%
 50%
 40%
 30%
 20%
 10%
 0%

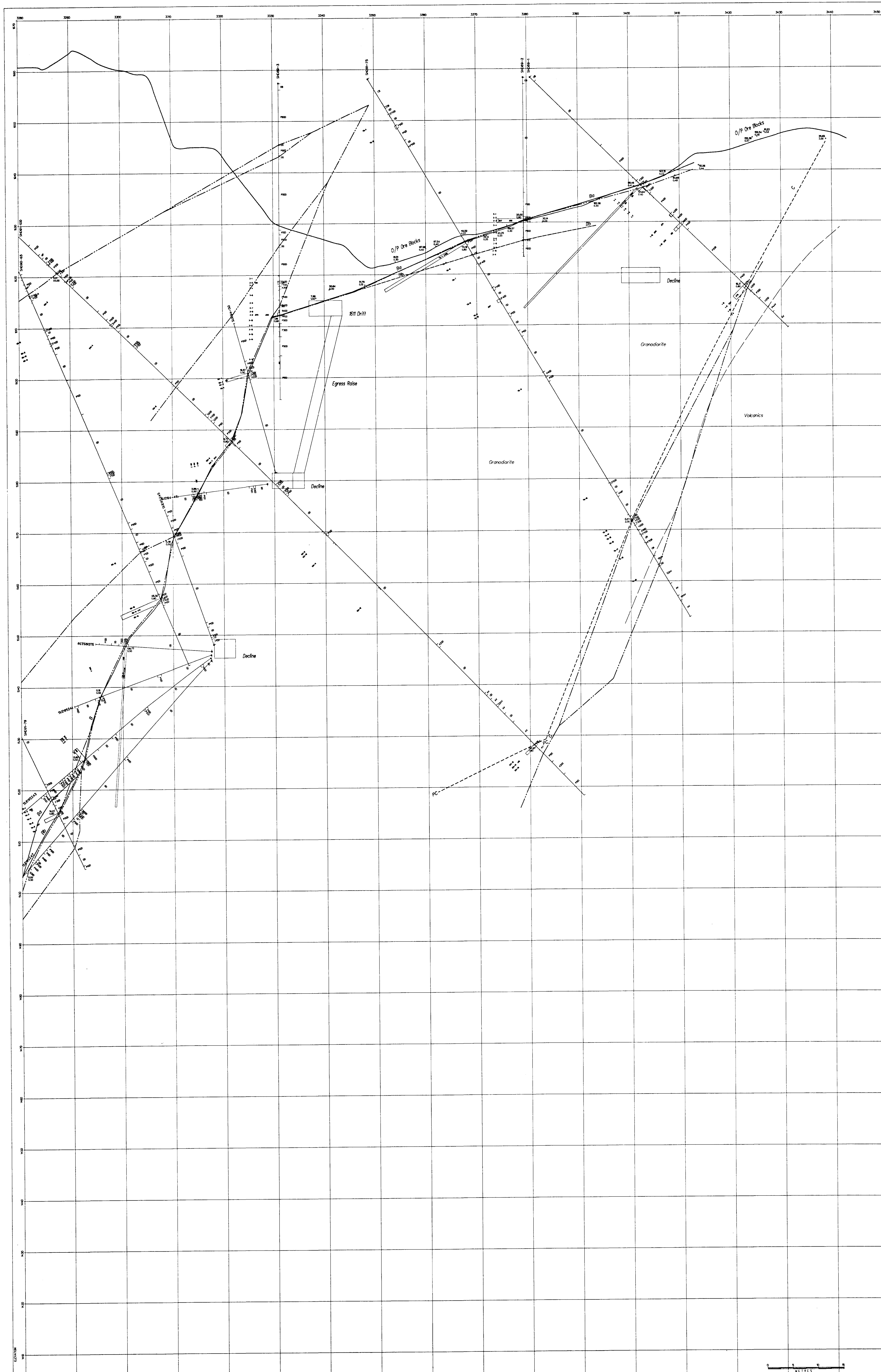
SYMBOLS

LITHOLOGIC CONTACT
 TRACE OF METALLIC STRUCTURE
 FAULT OF DEEP

PLOT OF DRILL HOLE

100 METERS

LOGICAL BRANC
 SSESSMENT REPOR
 24,374
 PART 2 OF 7



LEGEND

LITHOLOGY

CS GNEISS
 M MEDIUM GNEISS
 OS ONTARIO GNEISS

TERRAIN

AO ANDESITE DOME
 BI BEECH
 OL OLIVE
 QV QUARTZ VEIN

JURASSIC

COFFEY LAKE BATHOLITH

AP APFITE
 PF FELDSPAR PORPHYRY
 OC OROVANITE OIL WASH
 OD OROVANITE
 OR OROVANITE
 PG PERALTE
 QM QUARTZ MONOCRYTE

TWINS

AV ANDRESITE VOLCANIC
 PV PEGMATITE VOLCANIC
 CV CRYSTALLINE VOLCANIC

ALTERATION CODES

AN AN
 ST ST
 (A = 1 TO 5, W = 1 TO 5)

SULFIDE CONTENT CODES (quartz value)

S1 S1
 S2 S2
 S3 S3
 S4 S4
 S5 S5

SYMBOLS

— LITHOLOGICAL CONTACT
 — TRACE OF UNPAVED STRUCTURE
 — FAULT OR SEAM

PLOT OF DRILL HOLE

— DRILL HOLE
 — DRILL HOLE
 — DRILL HOLE

NOTE: OLD ARAYS AND ARAYERS < 1000' ARE NOT PLOTTED

* GEOLOGICAL BRANCH
 ASSESSMENT REPORT

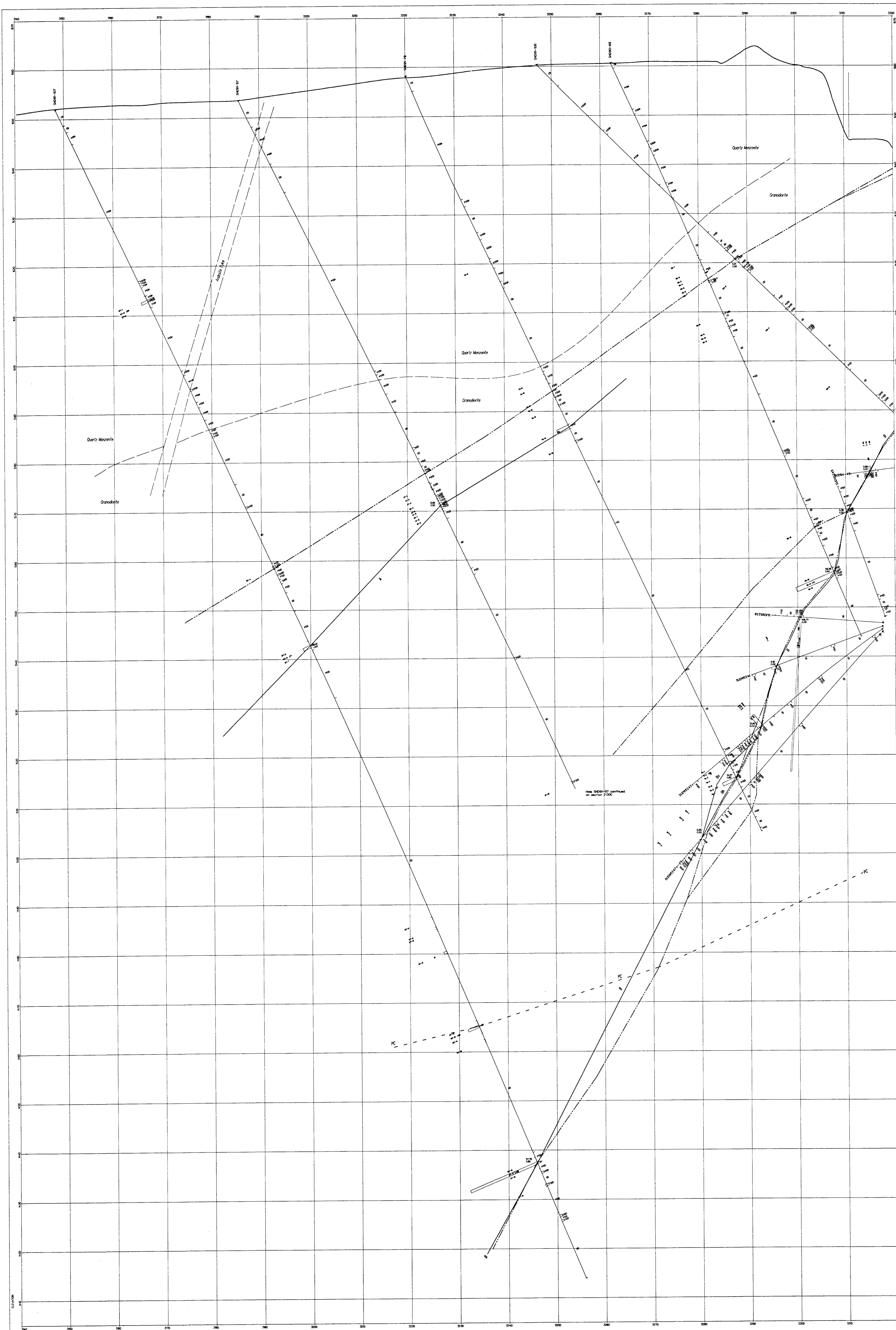
24,374
 PART 2 OF 7

FAIRFIELD MINERALS LTD.
 190 - 1000 West Hastings Street, Vancouver, B.C. Canada, V6E 2B9

SIWASH GOLD MINE
 SIWASH NORTH AREA
 DIAMOND DRILL SECTION
 2140E North Half
 SCALE 1 : 250
 LOOKING WEST

Drawn by: PWC
 February, 1988

Plate 14



LEGEND

LITHOLOGY

CS CARBON
 M MERRICK GNEISS
 CR CHROMITITE

TERTIARY

AD ANDREWSITE
 BR BRIDGEMAN
 DL DILLON
 QV QUARTZ VEIN

JURASSIC

CONLEY LAKE BEDROCK

AP APULTE
 FR FLEISSNER FORMATION
 GC GRANODIORITE GILL MASON
 GD GRANODIORITE
 GR GRANITE
 PG PRESBYTERE
 QM QUARTZ MONZONITE

TRACED

NEELA GROUP VOLCANICS

ALTERATION CODES

AL ALKALINE
 AN ANTHOPHILITE
 CH CHLORITIC
 EP EPITHERMAL
 HY HYDROTHERMAL
 OX OXIDATION
 QU QUARTZ
 S SILEX
 ST STANNITE
 T TELLURIDE
 U URANINITE
 V VOLCANIC
 W WOLFRAMITE
 Z ZONAL

SULFIDE CONTENT CODES (QUARTZ VEINS)

1
 2
 3
 4
 5
 6
 7
 8
 9
 10
 11
 12
 13
 14
 15
 16
 17
 18
 19
 20

SYMBOLS

— LITHOLOGIC CONTACT
 --- TRACE OF UNDEVELOPED STRUCTURE
 - - - - - FALL OF BEAM

PLOT OF DRILL HOLE

NOTE: ONLY DEPTHS AND AVERAGES < 500 m/ft ARE PLOTTED

LOGICAL BRANCH
 ASSESSMENT REPORT

24,374

PART 2 OF 7

FAIRFIELD MINERALS LTD.
 1980 - 1990 West Hastings Street, Vancouver, British Columbia V6E 2E9

SIWASH GOLD MINE
 SIWASH NORTH AREA
 DIAMOND DRILL SECTION
 2140E South Half
 SCALE 1 : 250
 LOOKING WEST

Drawn by PFW
 February, 1988

PLATE 15