

GEOLOGICAL SURVEY BRANCH ASSESSMENT REPORTS
DATE RECEIVED APR 03 1996

1995 DIAMOND DRILLING REPORT

SIWASH GOLD MINE AREA, ELK PROPERTY

Similkameen Mining Division, B. C.
Siwash Lake Area, British Columbia
NTS: 92H-16W; Lat. 49°50'N; Long. 120°19'W

February, 1996

VOLUME IV: PLATES 31 - 45

This report consists of seven volumes:

- Volume I: Text, Tables & Figures
- Volume II: Plates 1 - 15
- Volume III: Plates 16 - 30
- Volume IV: Plates 31 - 45
- Volume V: Plates 46 - 68
- Volume VI: Appendices A & B
- Volume VII: Appendix C

FILMED

By

Wojtek Jakubowski, B.Sc., P.Geo.

&

Paul Controy, B.Sc., P. Geo.

Fairfield Minerals Ltd.
1980 - 1055 West Hastings Street

**GEOLOGICAL SURVEY OF CANADA
ASSESSMENT REPORT**

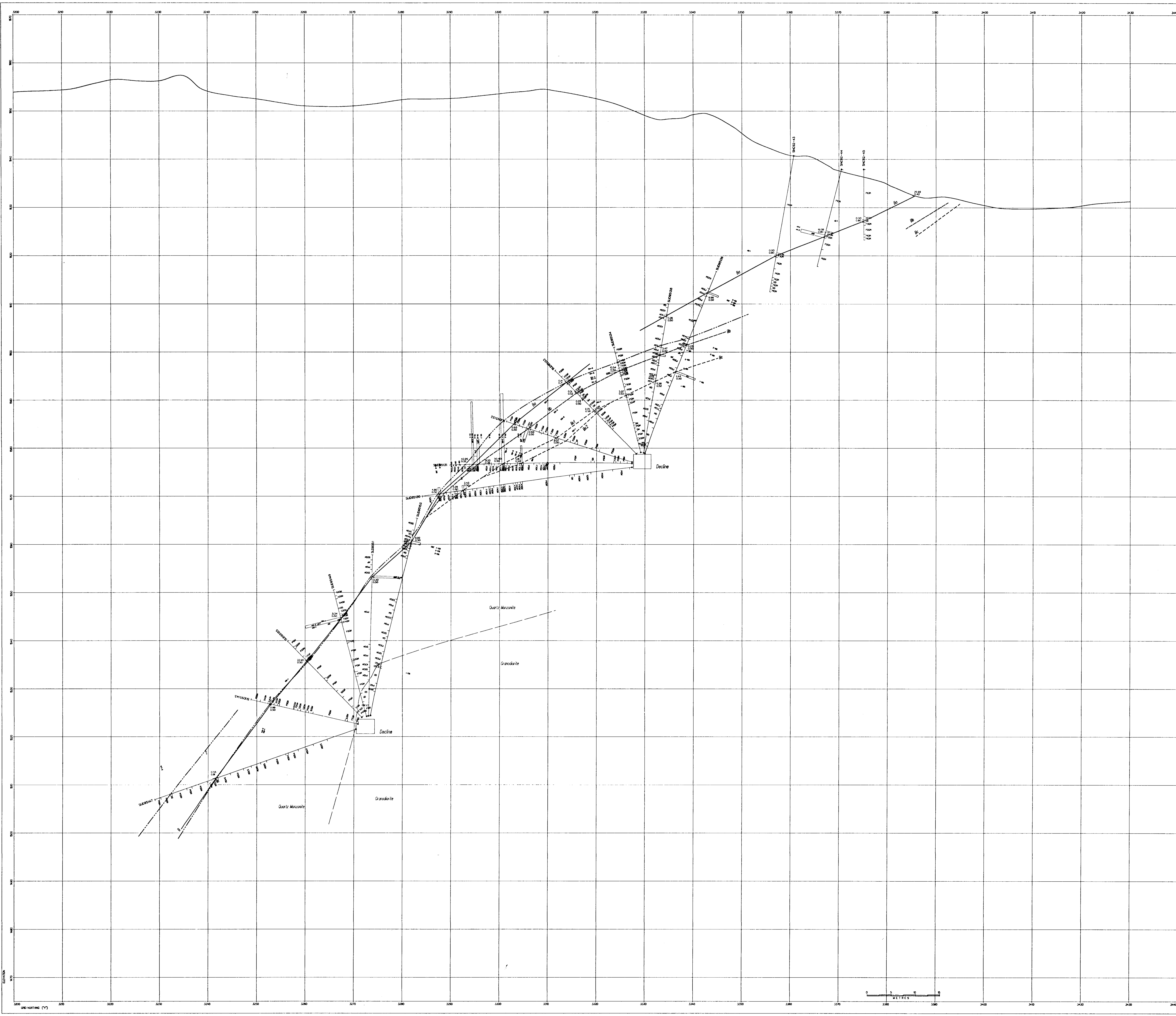
24,374 PART 4 OF 7

TABLE OF CONTENTS

VOLUME IV

PLATES

	(in pockets)	<u>Scale</u>
<u>Siwash North Area:</u>		
<u>Plate 31:</u> - Drill Section 2300E	1:250
<u>Plate 32:</u> - Drill Section 2310E	1:250
<u>Plate 33:</u> - Drill Section 2320E	1:250
<u>Plate 34:</u> - Drill Section 2330E	1:250
<u>Plate 35:</u> - Drill Section 2340E North	1:250
<u>Plate 36:</u> - Drill Section 2340E South	1:250
<u>Plate 37:</u> - Drill Section 2350E North	1:250
<u>Plate 38:</u> - Drill Section 2350E South	1:250
<u>Plate 39:</u> - Drill Section 2360E	1:250
<u>Plate 40:</u> - Drill Section 2370E	1:250
<u>Plate 41:</u> - Drill Section 2380E	1:250
<u>Plate 42:</u> - Drill Section 2390E	1:250
<u>Plate 43:</u> - Drill Section 2405E North	1:250
<u>Plate 44:</u> - Drill Section 2405E South	1:250
<u>Plate 45:</u> - Drill Section 2420E	1:250



LEGEND

LITHOLOGY

CS Gneiss
 CR Metased. rock
 CB Dolomitic

TERTIARY

AD ANDERSON DOME
 BR BRIDGES
 CR CRISTO
 DR QUARTZ VEIN

JURASSIC

OSNEY LAKE STRATH

AP ALUTE
 FP FELSIC PLUMPTRE
 GC GRANODIORITE GNEISS
 GD GRANODIORITE
 GR GRANITE
 PG PERALITE
 QM QUARTZ MONZONITE

TRONC

NEVA GROUP VOLCANICS

AV ANDERSON VOLCANIC
 PV PULCHRUM VOLCANIC
 BV BURNING VOLCANIC

ALTERATION CODES

AN ANTEFLUID
 AP ANTEFLUID
 PR PROXIMATE
 (N = 1 TO 5, NEAR TO INTENSE)

SULFIDE CONTENT CODES (quartz veins)

Q1 Q1
 Q2 Q2
 Q3 Q3
 Q4 Q4
 Q5 Q5

SYMBOLS

— LITHOLOGICAL CONTACT
 --- TRACE OF METALIZED STRUCTURE
 - - - - - FAULT OR SHEAR

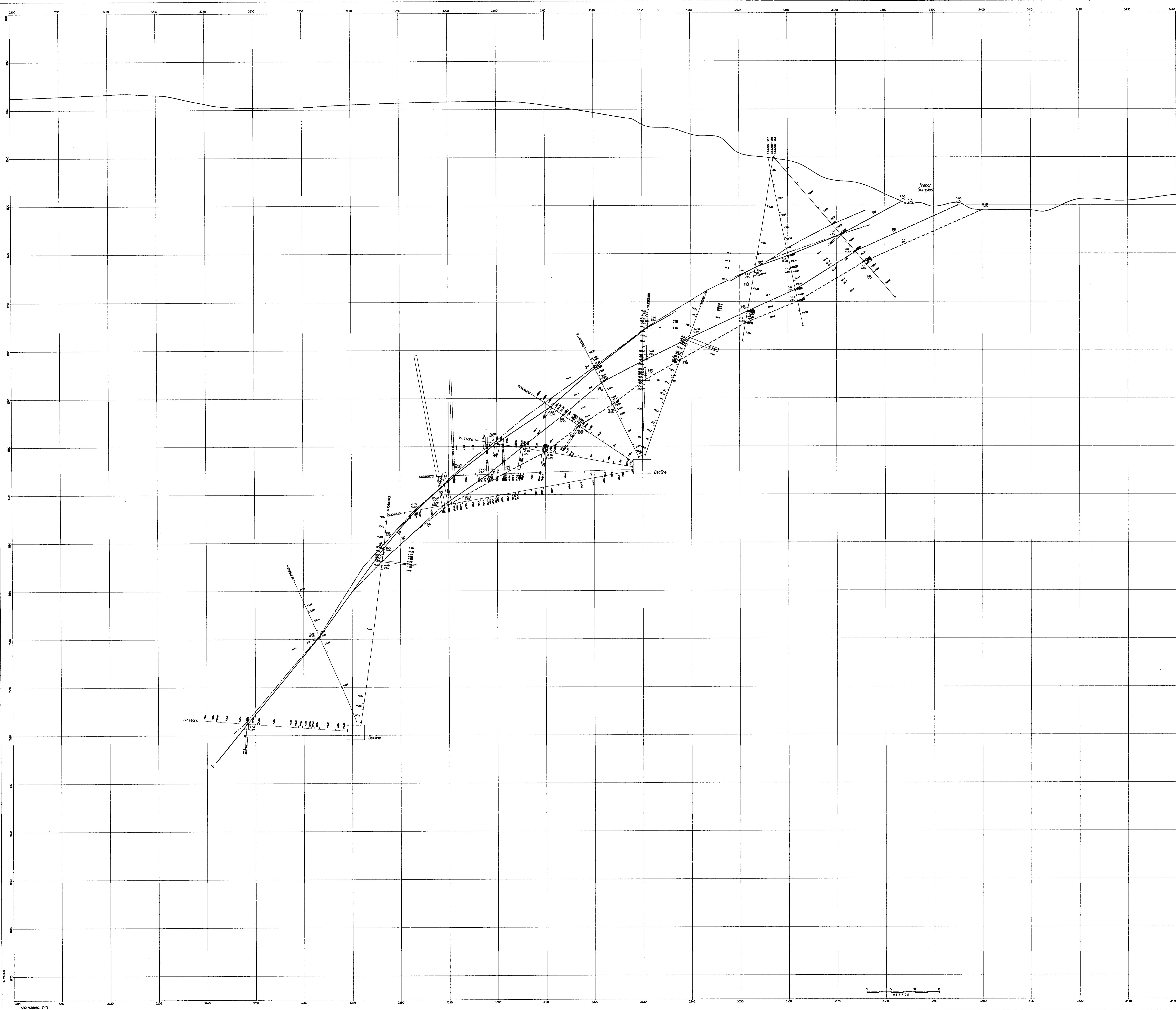
PLOT OF DRILL HOLE

SEE DRILL LOGS AND ASSAYS FOR DETAILS

**GEOLOGICAL BRANCH
 ASSESSMENT REPORT**

24,374

PART 4 OF 7



LEGEND

LITHOLOGY

CS CASIS
 ME MERRICK CORE
 CB CHALKMUD

TERTIARY

AO ANDESITE ONE
 BR BRICK
 GC GALE
 QV QUARTZ VLN

QUATERNARY

CP CONCRETE
 AP WHITE
 FP FOLDED FORMER
 DC DRINKERITE
 GO GONNEDITE
 OR ORANGE
 PR PEARLITE
 QM QUARTZ MONITE

TRUSC

VOA VOLCANIC
 AV ANDRESITE VOLCANIC
 PV PEARLITE VOLCANIC
 QV QUARTZ VOLCANIC

ALTERATION CODES

SO SULFIDE
 PO PEARLITE
 QV QUARTZ
 (+) TO (+) NEAR TO MINERAL

SULFIDE CONTENT CODES (Quartz veins)

SO SO
 PO PO
 QV QV

SYMBOLS

— LITHOLOGIC CONTACT
 — TRACE OF UNPAVED STRUCTURE (the lines after to some, however some (solid or dashed))
 - - - FAULT OR SEAM

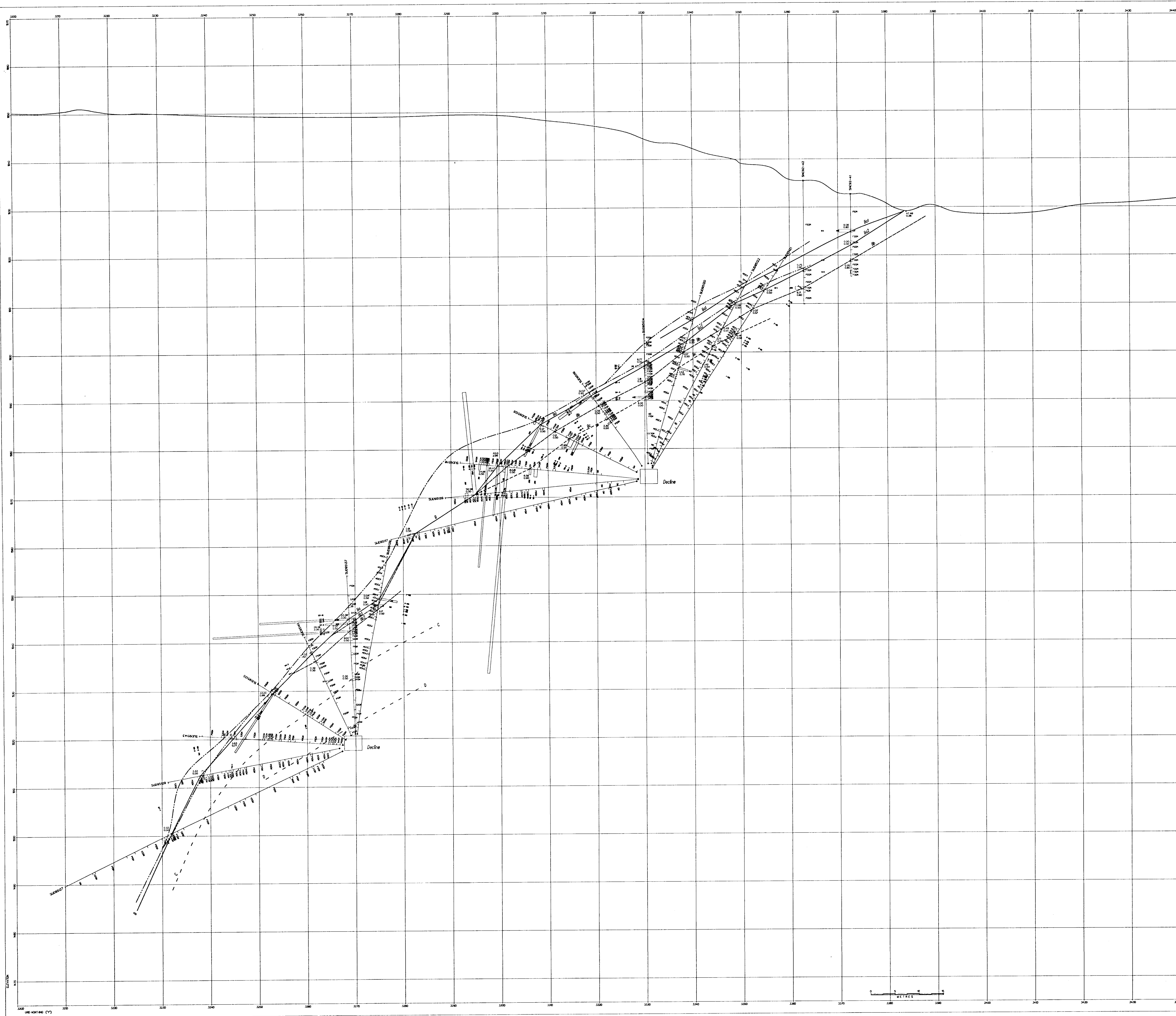
PLOT OF DRILL HOLE

SEE OLD ASSAYS AND ANALYSES < 0.05 wt% Au NOT POSTED

**GEOLOGICAL BRANCH
 ASSESSMENT REPORT**

24,374

PART 4 OF 7



LEGEND

LITHOLOGY

CS CLARK
 M MEGAC GNE
 DB DIABASE

TERTIARY

AO ANDERSON
 BR BRIDA
 CO COLE
 CR CLARK

LEWIS

OP OPEN
 PP PERRY
 OC ONTARIO
 OR ORANGE
 PR PRATT
 QM QUANT

TRONIC

AV ANDERSON
 PY PYROCLASTIC

ALTERATION CODES

AN AN
 BU BU
 CH CH
 CO CO
 CR CR
 CU CU
 DI DI
 DR DR
 DU DU
 DV DV
 DW DW
 DX DX
 DY DY
 DZ DZ

BULFIDE CONTENT CODES (quartz value)

0000
 0001
 0002
 0003
 0004
 0005
 0006
 0007
 0008
 0009
 0010

SYMBOLS

— LITHOLOGICAL CONTACT
 --- TRACE OF UNDEVELOPED STRUCTURE
 - - - FAULT OR SEAM

PLOT OF DRILL HOLE

SEE DRILL LOGS AND ASSAYS < 500 METRES NOT POSTED

4 GEOLOGICAL BRANCH
 ASSESSMENT REPORT

24,374

PART 4 OF 7

FAIRFIELD MINERALS LTD.
 190 - 1005 West Hastings Street, Vancouver, British Columbia, V6E 2G9

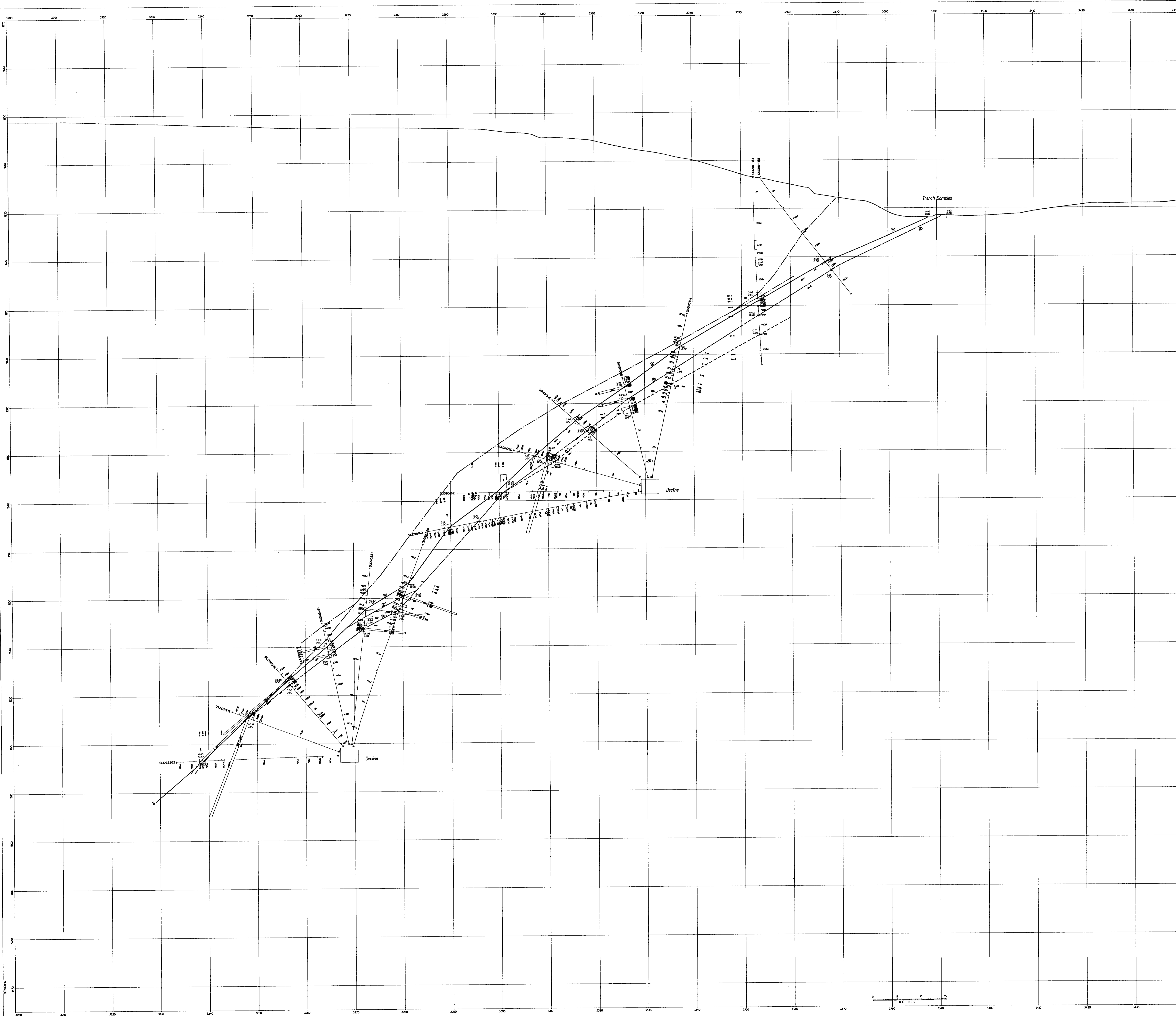
SIWASH GOLD MINE

SIWASH NORTH AREA
 DIAMOND DRILL SECTION

2320E
 SCALE 1 : 250
 LOOKING WEST

Drawn by PWD
 February, 1988

Plate 33



- LEGEND**
- LITHOLOGY**
- CS GNEISS
 - MS MICROC GNEISS
 - OS OROGENIC
- TRENDRY**
- AO ANDESITE DYKE
 - BO BRECCIA
 - GO GRAVE
 - QV QUARTZ VEIN
- ADVERSE**
- AP ADVERSE
 - FP FELSIC PORPHYRY
 - OC OROGENIC
 - OD OROGENIC
 - OR OR
 - PC PLGATE
 - QV QUARTZ VEIN
- TRASH**
- AV ANDERSITE VOLCANIC
 - DP DIOGENITE
 - OS OROGENIC
- ALTERATION CODES**
- 100 ANDESITE
 - 101 ANDESITE
 - 102 ANDESITE
 - 103 ANDESITE
 - 104 ANDESITE
 - 105 ANDESITE
 - 106 ANDESITE
 - 107 ANDESITE
 - 108 ANDESITE
 - 109 ANDESITE
 - 110 ANDESITE
 - 111 ANDESITE
 - 112 ANDESITE
 - 113 ANDESITE
 - 114 ANDESITE
 - 115 ANDESITE
 - 116 ANDESITE
 - 117 ANDESITE
 - 118 ANDESITE
 - 119 ANDESITE
 - 120 ANDESITE
 - 121 ANDESITE
 - 122 ANDESITE
 - 123 ANDESITE
 - 124 ANDESITE
 - 125 ANDESITE
 - 126 ANDESITE
 - 127 ANDESITE
 - 128 ANDESITE
 - 129 ANDESITE
 - 130 ANDESITE
 - 131 ANDESITE
 - 132 ANDESITE
 - 133 ANDESITE
 - 134 ANDESITE
 - 135 ANDESITE
 - 136 ANDESITE
 - 137 ANDESITE
 - 138 ANDESITE
 - 139 ANDESITE
 - 140 ANDESITE
 - 141 ANDESITE
 - 142 ANDESITE
 - 143 ANDESITE
 - 144 ANDESITE
 - 145 ANDESITE
 - 146 ANDESITE
 - 147 ANDESITE
 - 148 ANDESITE
 - 149 ANDESITE
 - 150 ANDESITE
 - 151 ANDESITE
 - 152 ANDESITE
 - 153 ANDESITE
 - 154 ANDESITE
 - 155 ANDESITE
 - 156 ANDESITE
 - 157 ANDESITE
 - 158 ANDESITE
 - 159 ANDESITE
 - 160 ANDESITE
 - 161 ANDESITE
 - 162 ANDESITE
 - 163 ANDESITE
 - 164 ANDESITE
 - 165 ANDESITE
 - 166 ANDESITE
 - 167 ANDESITE
 - 168 ANDESITE
 - 169 ANDESITE
 - 170 ANDESITE
 - 171 ANDESITE
 - 172 ANDESITE
 - 173 ANDESITE
 - 174 ANDESITE
 - 175 ANDESITE
 - 176 ANDESITE
 - 177 ANDESITE
 - 178 ANDESITE
 - 179 ANDESITE
 - 180 ANDESITE
 - 181 ANDESITE
 - 182 ANDESITE
 - 183 ANDESITE
 - 184 ANDESITE
 - 185 ANDESITE
 - 186 ANDESITE
 - 187 ANDESITE
 - 188 ANDESITE
 - 189 ANDESITE
 - 190 ANDESITE
 - 191 ANDESITE
 - 192 ANDESITE
 - 193 ANDESITE
 - 194 ANDESITE
 - 195 ANDESITE
 - 196 ANDESITE
 - 197 ANDESITE
 - 198 ANDESITE
 - 199 ANDESITE
 - 200 ANDESITE
- SULFIDE CONTENT CODES (quartz veins)**
- 000
 - 001
 - 002
 - 003
 - 004
 - 005
 - 006
 - 007
 - 008
 - 009
 - 010
 - 011
 - 012
 - 013
 - 014
 - 015
 - 016
 - 017
 - 018
 - 019
 - 020
 - 021
 - 022
 - 023
 - 024
 - 025
 - 026
 - 027
 - 028
 - 029
 - 030
 - 031
 - 032
 - 033
 - 034
 - 035
 - 036
 - 037
 - 038
 - 039
 - 040
 - 041
 - 042
 - 043
 - 044
 - 045
 - 046
 - 047
 - 048
 - 049
 - 050
 - 051
 - 052
 - 053
 - 054
 - 055
 - 056
 - 057
 - 058
 - 059
 - 060
 - 061
 - 062
 - 063
 - 064
 - 065
 - 066
 - 067
 - 068
 - 069
 - 070
 - 071
 - 072
 - 073
 - 074
 - 075
 - 076
 - 077
 - 078
 - 079
 - 080
 - 081
 - 082
 - 083
 - 084
 - 085
 - 086
 - 087
 - 088
 - 089
 - 090
 - 091
 - 092
 - 093
 - 094
 - 095
 - 096
 - 097
 - 098
 - 099
 - 100
- SYMBOLS**
- LITHOLOGIC CONTACT
 - TRACE OF METAMORPHIC STRUCTURE (See Legend for symbols)
 - FAULT OR SHEAR
- PLOT OF DRILL HOLE**
-
- SEE GOLD ASSAYS AND ANALYSES IN LOGS AND NOT POSTED

GEOLOGICAL BRANCH
ASSESSMENT REPORT

24,374

PART 4 OF 7

FAIRFIELD MINERALS LTD.
1000 - 1005 West Hastings Street, Vancouver, British Columbia V6E 2G9

SIWASH GOLD MINE

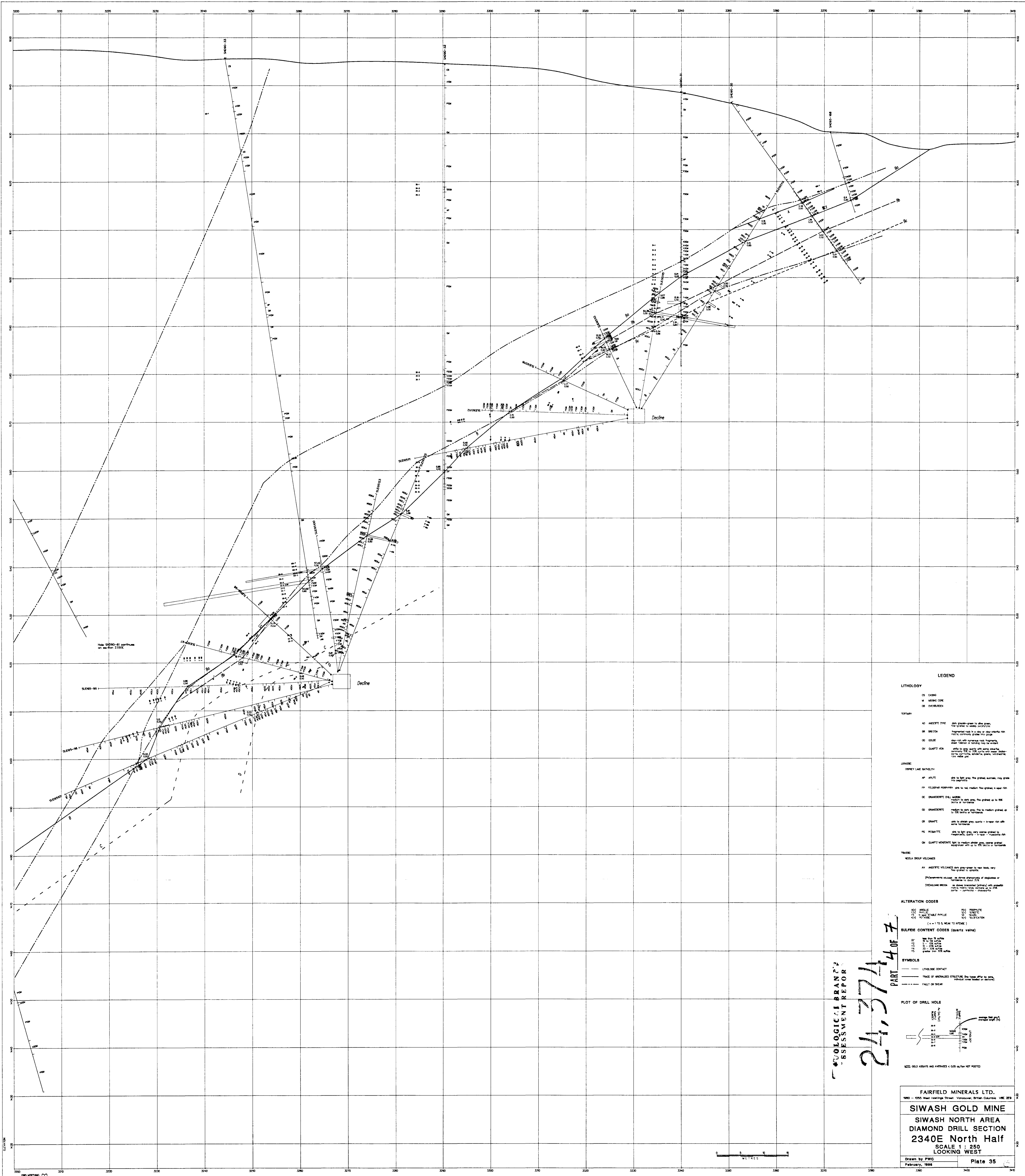
SIWASH NORTH AREA
DIAMOND DRILL SECTION

2330E
SCALE 1 : 250
LOOKING WEST

Drawn by FWG
February, 1988

Plate 34





LEGEND

LITHOLOGY

CS GANG
 M MEDIUM CORE
 OS OVERBANK

TERMINI

A0 ANESTIC ZONE
 B0 BECTA
 C0 COLE
 D0 QUARTZ VEH

ALTERATION

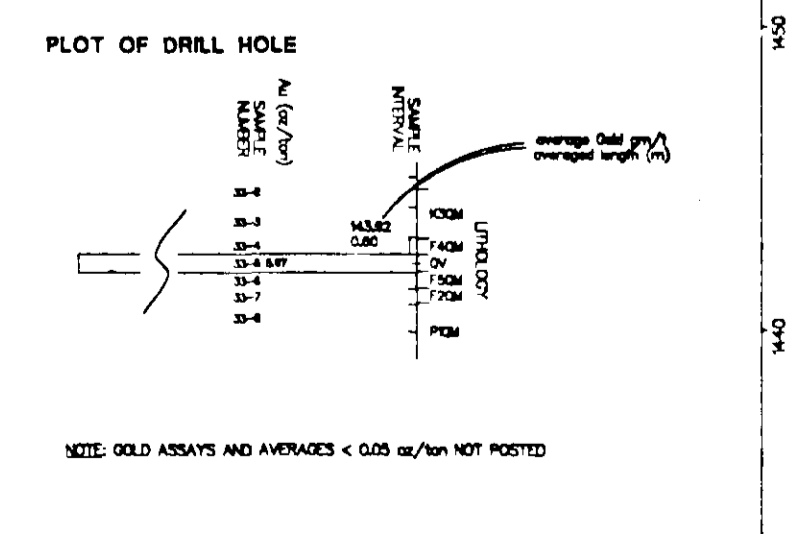
AN ANESTIC
 B0 BECTA
 C0 COLE
 D0 QUARTZ VEH

ALTERATION CODES

AN ANESTIC
 B0 BECTA
 C0 COLE
 D0 QUARTZ VEH

SULPHIDE CONTENT CODES (quartz veins)

S0 S0
 S1 S1
 S2 S2
 S3 S3
 S4 S4
 S5 S5
 S6 S6
 S7 S7
 S8 S8
 S9 S9



FAIRFIELD MINERALS LTD.
 1900 - 1955 West Hastings Street Vancouver, British Columbia V6E 2E9

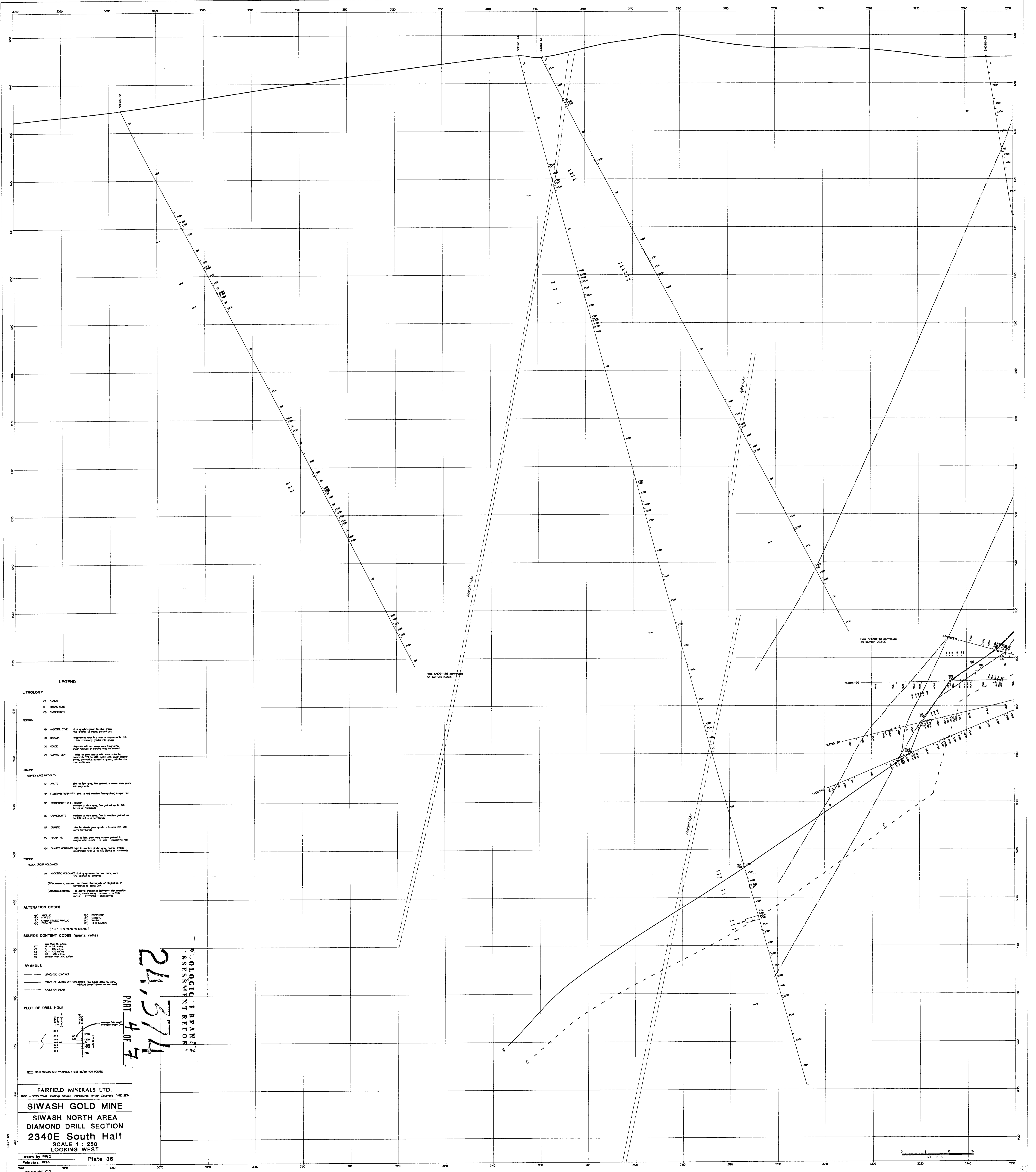
SIWASH GOLD MINE
 SIWASH NORTH AREA
 DIAMOND DRILL SECTION
 2340E North Half
 SCALE 1 : 250
 LOOKING WEST

Drawn by PWC
 February, 1988

Plate 35

GEOLOGICAL REPORT
 ASSESSMENT REPORT
 24,374
 PART 4 OF 7





LEGEND

LITHOLOGY

CS CASING
 M MESSING ORE
 OB OVERBREKEN

TERRACE

AO ANESTIC ORE dark green to blue grey
 BO BROWN ORE brown to red
 CO COAL ORE dark grey to black
 DO DIAMOND ORE dark grey to black
 EO EARTH ORE dark grey to black

JASPER

OP OPERATIVE ORE dark grey to black
 AP WHITE
 FP FLORESID OPERATIVE ORE dark grey to black
 GP GRANODIORITE ORE dark grey to black
 IP GRANODIORITE dark grey to black
 OP OPERATIVE ORE dark grey to black
 AP WHITE
 FP FLORESID OPERATIVE ORE dark grey to black
 GP GRANODIORITE ORE dark grey to black
 IP GRANODIORITE dark grey to black

TRACED

AV ANESTIC VOLCANIC dark grey to black
 BV BROWN VOLCANIC dark grey to black
 CV COAL VOLCANIC dark grey to black
 DV DIAMOND VOLCANIC dark grey to black
 EV EARTH VOLCANIC dark grey to black

ALTERATION CODES

OX OXIDATION
 CH CHLORITIC
 AN ANESTIC
 BU BURNED
 CA CARBONATE
 CR CRACKING
 CU COPPER
 DI DIAMOND
 DR DRY
 EP EPIDERMAL
 FA FAULT
 FB FLORESID
 FC FLORESID
 FD FLORESID
 FE FLORESID
 FF FLORESID
 FG FLORESID
 FH FLORESID
 FI FLORESID
 FJ FLORESID
 FK FLORESID
 FL FLORESID
 FM FLORESID
 FN FLORESID
 FO FLORESID
 FP FLORESID
 FQ FLORESID
 FR FLORESID
 FS FLORESID
 FT FLORESID
 FU FLORESID
 FV FLORESID
 FW FLORESID
 FX FLORESID
 FY FLORESID
 FZ FLORESID

SULFIDE CONTENT CODES (quartz veins)

1 1
 2 2
 3 3
 4 4
 5 5
 6 6
 7 7
 8 8
 9 9
 10 10
 11 11
 12 12
 13 13
 14 14
 15 15
 16 16
 17 17
 18 18
 19 19
 20 20
 21 21
 22 22
 23 23
 24 24
 25 25
 26 26
 27 27
 28 28
 29 29
 30 30
 31 31
 32 32
 33 33
 34 34
 35 35
 36 36
 37 37
 38 38
 39 39
 40 40
 41 41
 42 42
 43 43
 44 44
 45 45
 46 46
 47 47
 48 48
 49 49
 50 50
 51 51
 52 52
 53 53
 54 54
 55 55
 56 56
 57 57
 58 58
 59 59
 60 60
 61 61
 62 62
 63 63
 64 64
 65 65
 66 66
 67 67
 68 68
 69 69
 70 70
 71 71
 72 72
 73 73
 74 74
 75 75
 76 76
 77 77
 78 78
 79 79
 80 80
 81 81
 82 82
 83 83
 84 84
 85 85
 86 86
 87 87
 88 88
 89 89
 90 90
 91 91
 92 92
 93 93
 94 94
 95 95
 96 96
 97 97
 98 98
 99 99
 100 100

SYMBOLS

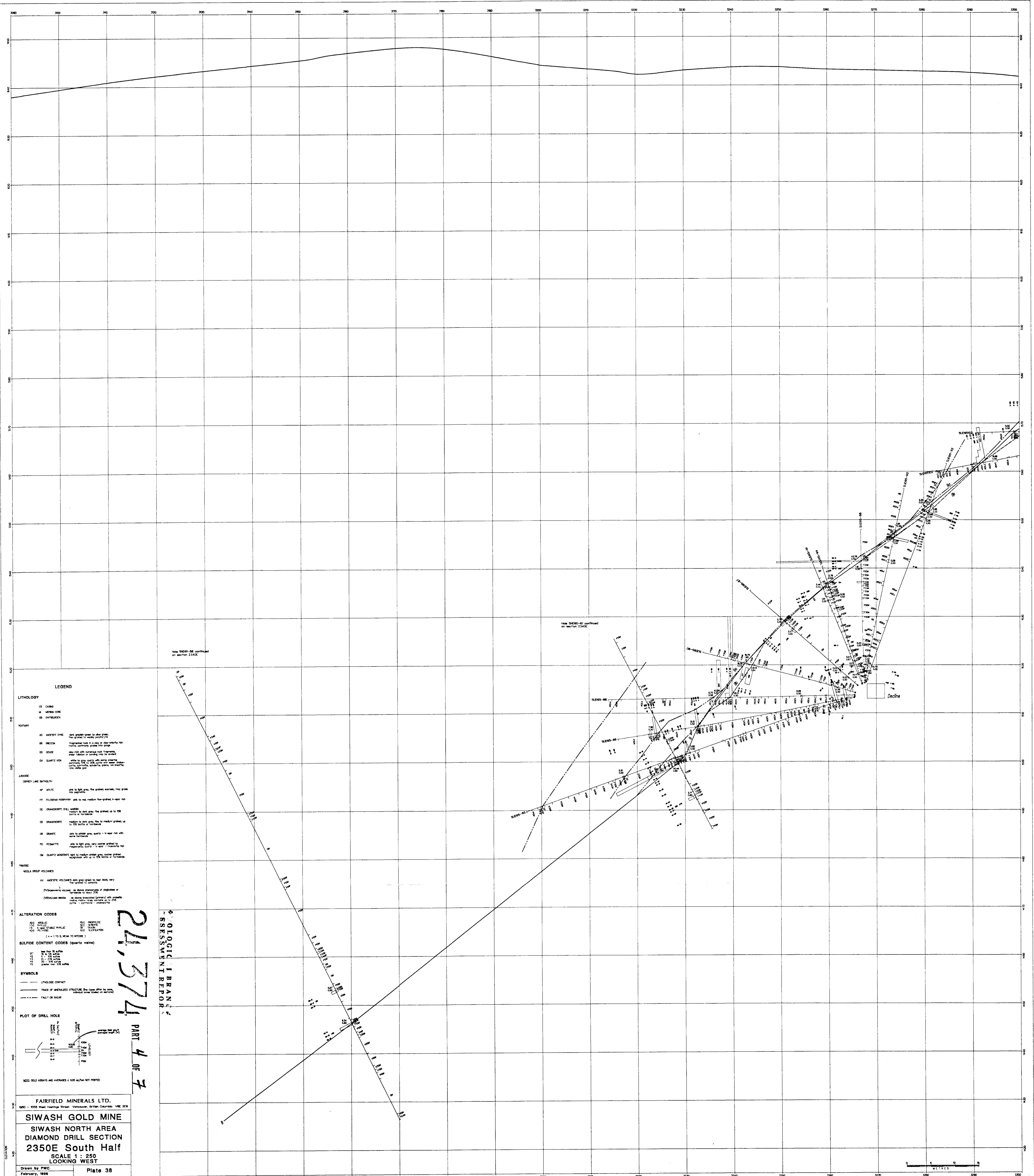
— LITHOLOGIC CONTACT
 --- TRACE OF UNDEVELOPED STRATIGRAPHY
 - - - - - FAULT OR SEAM

PLOT OF DRILL HOLE

SEE DRILL ASSAYS AND ANALYSES - 6000 m/ton NOT REPROD

24,374
 PART 4 OF 7
 GEOLOGIC BRANCH
 ASSESSMENT REPORT





LEGEND

LITHOLOGY

CS CHALK
 M MUDROCK
 OS OUPHELETT

TERTIARY

AO ANDESITIC DYKE
 BR BRECCIA
 CO COALS
 QV QUARTZ VEIN

PLATINUM

SP SPHERULITE
 PP PEGMATITE
 OC ORANGEY DYE
 OB ORANGEY
 CR CRATE
 PG PERMITE
 QV QUARTZ VEIN

ALTERATION CODES

AL ALKALINE
 AN ANDESITIC
 BR BRECCIA
 CH CHALK
 CO COALS
 CR CRATE
 PG PERMITE
 QV QUARTZ VEIN

BULFIDE CONTENT CODES (QUARTZ VEINS)

0000
 0001
 0002
 0003
 0004
 0005
 0006
 0007
 0008
 0009
 0010

SYMBOLS

— LITHOLOGIC CONTACT
 — TRACE OF METALIZED STRUCTURE
 — FALL OF DEBRIS

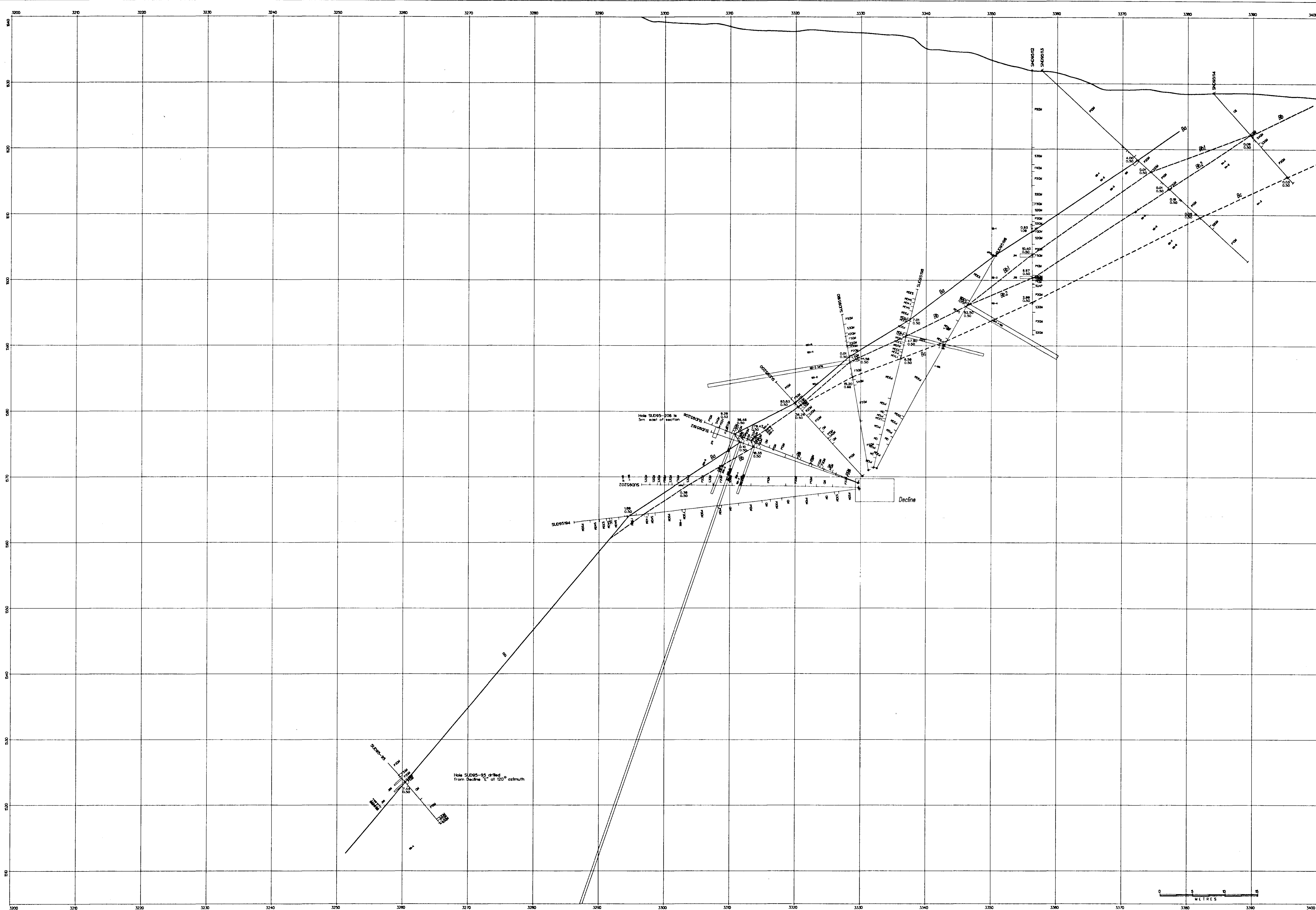
PLOT OF DRILL HOLE

NOTE: OLD ARMS AND AIRRAVES < 500 m/AN NOT PLOTTED

24,374 PART 4 OF 7
 GEOLOGICAL BRANCH
 ASSESSMENT REPORT

FAIRFIELD MINERALS LTD.
 5900 - 5000 West Havelock Street, Vancouver, British Columbia, V6E 2G8
SIWASH GOLD MINE
 SIWASH NORTH AREA
 DIAMOND DRILL SECTION
 2350E South Half
 SCALE 1 : 250
 LOOKING WEST
 Drawn by PWC
 February, 1998
 Plate 38





LEGEND

LITHOLOGY

OS CANADIAN

OS CANADIAN
 M MESSING CORE
 B OVERBURDEN

TERTIARY

AD ANDESITE DYKE dark gray-green to olive green, fine-grained to wavy porphyritic
 BR BRECCIA fragmented rock in a clay or clay-siltstone rich matrix commonly grades into gouge
 CC CLAYE clay-rich with numerous root fragments, other textures or banding may be noted
 QV QUARTZ VEIN white to gray quartz with some staining, commonly 100 to 200 yards with lesser sulfide, pyrite, garnet, epidote, calcite, rare yellow gold

JURASSIC

OSNEY LAKE BATOLITH

AP APLITE pink to light gray, fine grained, coarse, may grade into pegmatite
 FP FELDSPAR PORPHYRY pink to red, medium fine-grained, 1-2 cm rich
 GC GRANODIORITE DALL MASON medium to dark gray, fine grained up to 100 yards or horizons
 GD GRANODIORITE medium to dark gray, fine to medium grained, up to 100 yards or horizons
 GR GRANITE pink to pinkish gray, quartz - 1-2 cm rich with some hornblende
 PG PEGMATITE pink to light gray, very coarse grained to megacrystic, quartz - 1-2 cm - muscovite rich
 QM QUARTZ MONZONITE light to medium medium gray, coarse grained, megacrystic up to 100 yards or horizons

TRASSIC

MOCLA GROUP VOLCANICS

AV ANDESITE VOLCANIC dark gray-green to near black, very fine-grained to aphanitic
 (HYPOPHYRIC VOLCANIC on above phenocrysts of plagioclase or hornblende to about 200
 (HYPOPHYRIC BRECCIA on above brecciated (primary) with andesite matrix, matrix may contain up to 200 yards - pyrite - chlorite - chlorite)

ALTERATION CODES

A) ANOMALOUS
 B) BIFURCATED
 C) C-SPREAD STABLE PHYLIC
 D) D-SPREAD STABLE PHYLIC
 E) E-SPREAD STABLE PHYLIC
 F) F-SPREAD STABLE PHYLIC
 G) G-SPREAD STABLE PHYLIC
 H) H-SPREAD STABLE PHYLIC
 I) I-SPREAD STABLE PHYLIC
 J) J-SPREAD STABLE PHYLIC
 K) K-SPREAD STABLE PHYLIC
 L) L-SPREAD STABLE PHYLIC
 M) M-SPREAD STABLE PHYLIC
 N) N-SPREAD STABLE PHYLIC
 O) O-SPREAD STABLE PHYLIC
 P) P-SPREAD STABLE PHYLIC
 Q) Q-SPREAD STABLE PHYLIC
 R) R-SPREAD STABLE PHYLIC
 S) S-SPREAD STABLE PHYLIC
 T) T-SPREAD STABLE PHYLIC
 U) U-SPREAD STABLE PHYLIC
 V) V-SPREAD STABLE PHYLIC
 W) W-SPREAD STABLE PHYLIC
 X) X-SPREAD STABLE PHYLIC
 Y) Y-SPREAD STABLE PHYLIC
 Z) Z-SPREAD STABLE PHYLIC

(n = 1 TO 5, WEAK TO INTENSE)

SULFIDE CONTENT CODES (quartz veins)

1 less than 1% sulfide
 2 1 to 10% sulfide
 3 10 to 20% sulfide
 4 20 to 30% sulfide
 5 greater than 30% sulfide

SYMBOLS

— LITHOLOGIC CONTACT
 --- TRACE OF MINERALIZED STRUCTURE (see lines differ by some, individual zones treated on sections)
 - - - - - FAULT OR SHEAR

PLOT OF DRILL HOLE

NOTE: OLD ASSAYS AND AVERAGES < 0.05 g/ton NOT POSTED

LOGICAL BRANCH
 ASSESSMENT REPORT

24,374

PART 4 OF 7

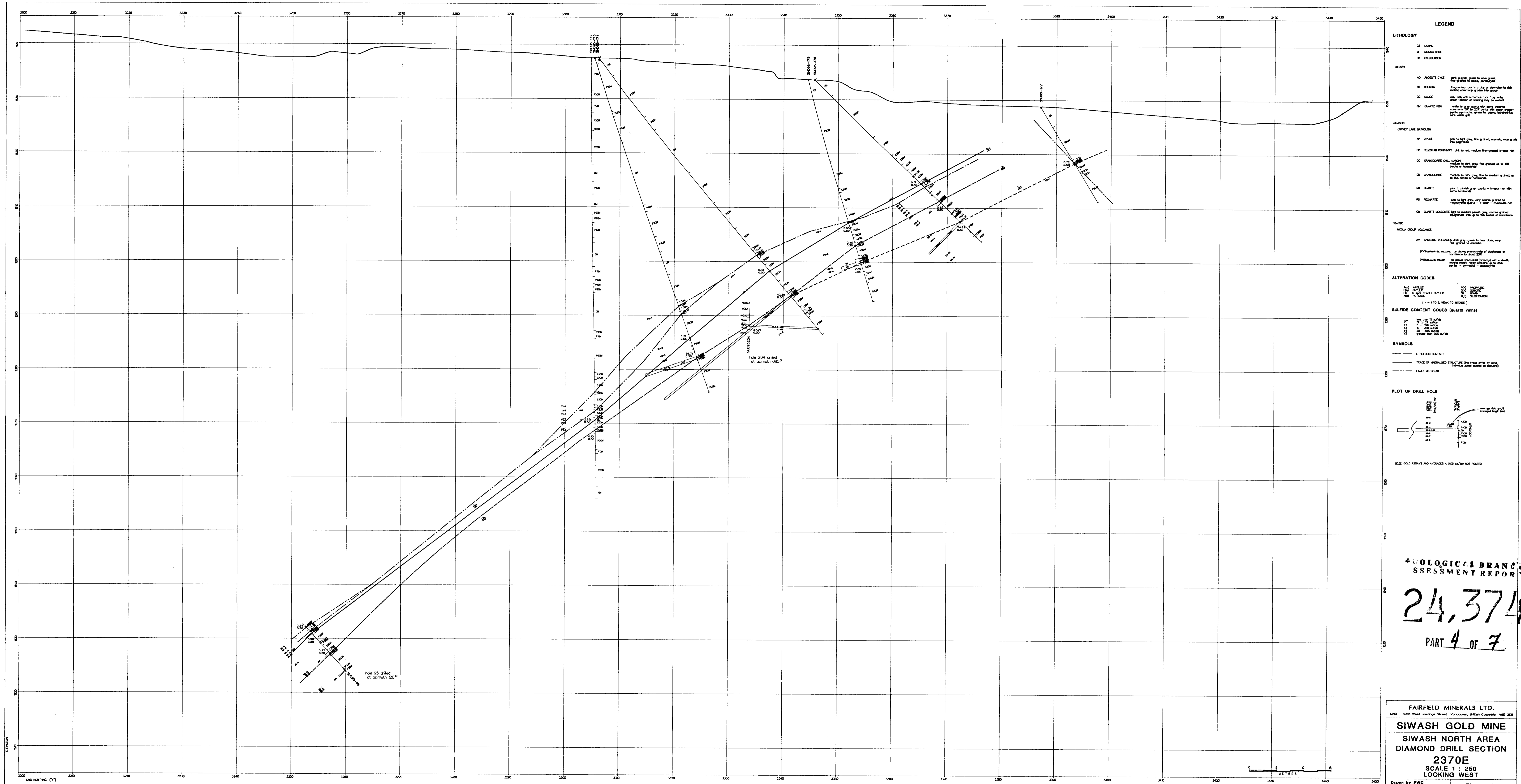
FAIRFIELD MINERALS LTD.
 1880 - 1055 West Hastings Street Vancouver, British Columbia V6E 2E9

SIWASH GOLD MINE

SIWASH NORTH AREA
 DIAMOND DRILL SECTION
 2360E
 SCALE 1 : 250
 LOOKING WEST

Drawn by PWC
 February, 1988

Plate 39



- LEGEND**
- LITHOLOGY**
- TERTIARY**
- AD ANESITE DYKE
 - BR BRECCIA
 - GD GNEISS
 - QV QUARTZ VEIN
- ARABIDE**
- LOONEY LAKE BATHOLITH**
- AP AMPHIBOLITE
 - FP FELDSPAR PORPHYRY
 - GC GRANODIORITE (CAL. MASS)
 - GD GRANODIORITE
 - GR GRANITE
 - PG PERALTE
 - QM QUARTZ MONZONITE
- TRASSE**
- NEOLA GROUP VOLCANICS**
- AV ANESITE VOLCANICS
 - PH PHENOCRYSTIC VOLCANIC
 - OV OVALINE MOUNTAIN
- ALTERATION CODES**
- NO ANOMALOUS
 - PO PEGMATITE
 - HY HYDROTHERMAL
 - PH PHENOCRYSTIC
 - PO PEGMATITE
 - SO SULFIDE OXIDATION
 - SP SULFIDE PREGNANT
 - ST SULFIDE THERMAL
 - TR THERMAL
 - VE VEGETATION
- SULFIDE CONTENT CODES (quartz veins)**
- 0.00 - 0.05%
 - 0.05 - 0.10%
 - 0.10 - 0.20%
 - 0.20 - 0.50%
 - 0.50 - 1.00%
 - 1.00 - 2.00%
 - 2.00 - 5.00%
 - 5.00 - 10.00%
 - 10.00 - 20.00%
 - 20.00 - 50.00%
 - 50.00 - 100.00%
- SYMBOLS**
- LITHOLOGICAL CONTACT
 - TRACE OF ANNEALED STRUCTURE (line type other than solid)
 - - - FAULT OR SHEAR
- PLOT OF DRILL HOLE**
- SEE DRILL ASSAYS AND ANALYSES < 0.05 g/t Au NOT PLOTTED

***GEOLOGICAL BRANCH
ASSESSMENT REPORT***

24,374

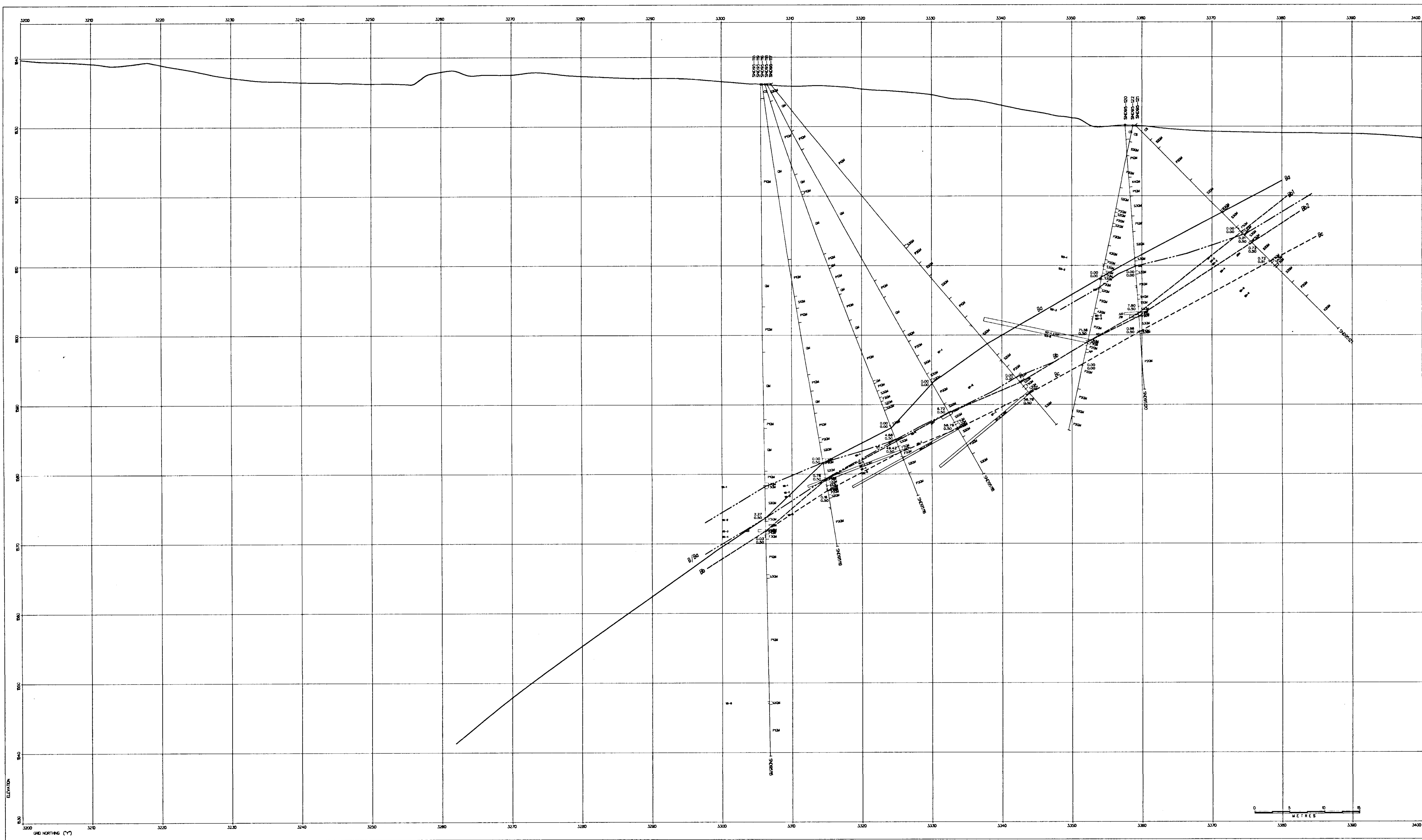
PART 4 OF 7

FAIRFIELD MINERALS LTD.
 1800 - 100 West Hastings Street Vancouver, British Columbia V6E 2E9

SIWASH GOLD MINE
SIWASH NORTH AREA
DIAMOND DRILL SECTION
2370E
SCALE 1 : 250
LOOKING WEST

Drawn by PWG
 February, 1998

Plate 40



LEGEND

LITHOLOGY

CS CASING
 M MISSING CORE
 OB OVERLAP

TERTIARY

AO ANDESITE DYKE dark gray-green to olive green, fine-grained to medium porphyritic
 BR BRECCIA fragmented rock in a clay or clay-siltstone rich matrix, commonly greenish gray
 CC COLLE clay-rich with numerous rock fragments, shear foliation or bedding may be evident
 QV QUARTZ VEIN white to gray quartz with some orthoclase commonly 100 to 200 µm with some orthopyroxene, epidote, sphene, garnet, leucocratic rock matrix

JURASSIC

OSNEY LAKE BATHOLITH

AP ALUTE pink to light gray, fine grained, auriferous, may grade into pegmatite
 FP FELDSPAR PORPHYRY pink to red, medium fine-grained, k-spar rich
 GC GRANODIORITE OIL MARCH medium to dark gray, fine grained up to 100 microns or horizons
 GD GRANODIORITE medium to dark gray, fine to medium grained up to 100 microns or horizons
 GR GRANITE pink to orange gray, quartz - k-spar rich with some hornblende
 PG PEGMATITE pink to light gray, very coarse grained to megacrystic, quartz - k-spar - muscovite rich
 QM QUARTZ MONZONITE light to medium orange gray, coarse grained, equigranular with up to 100 microns or horizons

TRASSIC

NEOLA GROUP VOLCANICS

AV ANDESITE VOLCANIC dark gray-green to near black, very fine-grained to coarse
 (P) PLAGIOCLASE VOLCANIC as above characteristic of plagioclase or hornblende to about 200
 (V) VOLCANIC BRECCIA as above brecciated (primary) with granular matrix matrix may contain up to 20% pyrite - pyrrhotite - chromopyrite

ALTERATION CODES

(A) ARGILLIC (P) PROPYLITIC
 (K) K-SPATE STABLE PHYLIC (S) SERICITIC
 (M) POTASSIC (SO) SOULFIDATION
 (n = 1 TO 5, WEAK TO INTENSE)

SULFIDE CONTENT CODES (QUARTZ VEINS)

ST none from 0 to surface
 S 0 to 20% surface
 D 20 to 50% surface
 V 50 to 100% surface
 G greater than 100% surface

SYMBOLS

— LITHOLOGIC CONTACT
 — TRACE OF MINERALIZED STRUCTURE (see notes for details, includes some faulted or fractured)
 - - - FAULT OR SHEAR

PLOT OF DRILL HOLE

SOLE: GOLD ASSAYS AND AVERAGES < 0.05 g/t NOT POSTED

**GEOLOGICAL BRANCH
 ASSESSMENT REPORT**

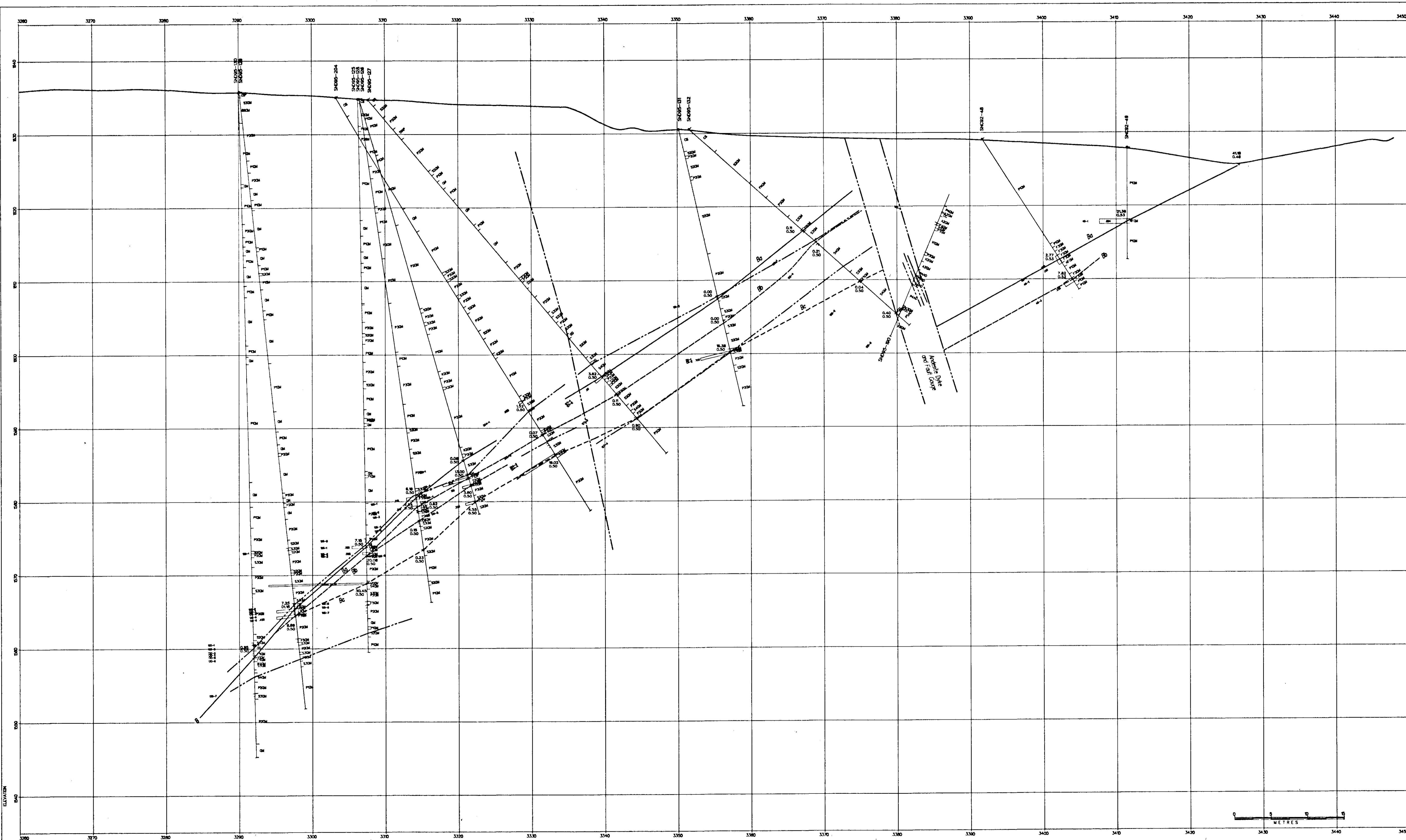
24,374

PART 4 OF 7

FAIRFIELD MINERALS LTD.
 1800 - 1055 West Hastings Street, Vancouver, British Columbia V6E 2L9

SIWASH GOLD MINE
 SIWASH NORTH AREA
 DIAMOND DRILL SECTION
 2380E
 SCALE 1 : 250
 LOOKING WEST

Drawn by PWC February, 1998 **Plate 41**



LEGEND

LITHOLOGY

OS OSHING
 M MISSING CORE
 OB OSHIBUNDEN

TERTIARY

AD ANDESITE DYKE dark grayish-green to olive green, fine-grained to waxy porphyritic
 BR BRECCIA fragmented rock in a clay or clay-siltstone rich matrix commonly grades into gneiss
 OD OOLITE clay-rich with numerous rock fragments, shear tabulation or bonding may be evident
 OV QUARTZ VEN white to gray quartz with some orthoclase commonly 100 to 200 µm with lesser chloropyrite, pyrite, arsenic, galena, tetrahedral rock vials gold

JURASSIC

OSPREY LAKE BATHOLITH

AP APLITE pink to light gray, fine grained, asexual, may grade into porphyrite
 FP FELDSPAR PORPHYRY pink to red, medium fine-grained, bi-modal rich
 GC GRANODIORITE DALL MARSH medium to dark gray, fine to medium grained up to 100 microns or hornblende
 GD GRANODIORITE medium to dark gray, fine to medium grained up to 100 microns or hornblende
 GR GRANITE pink to pinkish gray, quartz - bi-modal rich with some hornblende
 PG PERMATTITE pink to light gray, very coarse grained to megacrystic, quartz - bi-modal - muscovite rich
 QM QUARTZ MONODITE light to medium pinkish gray, coarse grained equigranular with up to 100 microns or hornblende

TRASSIC

NOCCA GROUP VOLCANICS

AV ANDESITIC VOLCANICS dark gray-green to near black, very fine-grained to aphanitic
 (V) ANDRESITIC VOLCANICS as above phenocrysts of plagioclase or hornblende to quartz
 (V) VOLCANIC BRECCIA as above brecciated (primary) with andesitic matrix matrix rarely contains up to 25% pyrite - pyrrhotite - chalcopyrite

ALTERATION CODES

A(1) ANKILIC	P(1) PROPHYLITIC
F(1) FAYALIC	S(1) SERPENTINIC
K(1) K-FER STABLE PHYLIC	SO(1) SOULPHIDATION
P(1) POTASSIC	SL(1) SILICIFICATION

(n = 1 TO 5, WEAK TO INTENSE)

SULFIDE CONTENT CODES (quartz vials)

Y1	less than 1% sulfide
Y2	1 - 5% sulfide
Y3	5 - 20% sulfide
Y4	20 - 50% sulfide
Y5	greater than 50% sulfide

SYMBOLS

— LITHOLOGIC CONTACT
 - - - TRACE OF MINERALIZED STRUCTURE (line types differ by zone, individual zones treated on sections)
 - - - - - FAULT OR SHEAR

PLOT OF DRILL HOLE

NOTE: GOLD ASSAYS AND AVERAGES < 0.05 g/t ARE NOT POSTED

**GEOLOGICAL BRANCH
 ASSESSMENT REPORT**

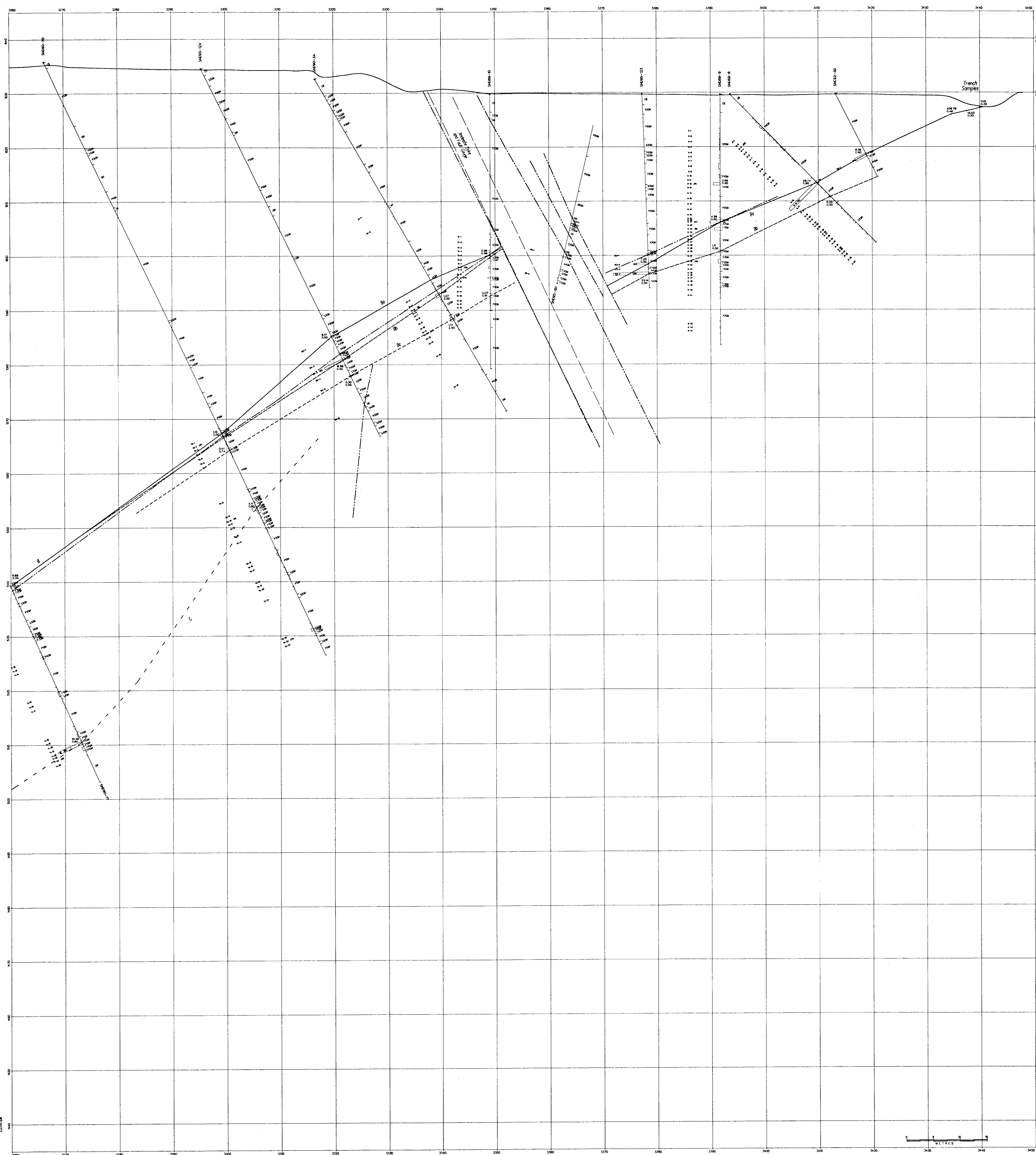
24,374
 PART 4 OF 7

FAIRFIELD MINERALS LTD.
 1800 - 1055 West Hastings Street, Vancouver, British Columbia V6C 2Z9

SIWASH GOLD MINE
 SIWASH NORTH AREA
 DIAMOND DRILL SECTION
 2390E
 SCALE 1 : 250
 LOOKING WEST

Drawn by PWO
 February, 1988

Plate 42



- LEGEND**
- LITHOLOGY**
- CS GANG
 M MANG CORE
 OB OVERLIEK
- TERTIARY**
- AO ANDESITE DYKE dark grey-green to olive green, fine grained, of heavy porphyry
 BR BRECCIA fragmental rock in a matrix of fine-grained, fine to medium grained, granitic rock
 CG GLEBE greyish with numerous rock fragments, coarse to medium grained
 QV QUARTZ VEH white to grey quartz with some staining, commonly in the form of thin plates, partly granular, partly fibrous, sometimes in the form of veins
- JURASSIC**
- DEVEY LAKE BATHOLITH
- AP APHITE pink to light grey, fine grained, normally very coarse and porphyritic
 FP FELDSPAR PORPHYRY pink to red, medium fine-grained, to coarse
 GC GRANODIORITE DIAL WAXEN medium to dark grey, fine to medium grained, up to 100 microns in diameter
 GD GRANODIORITE medium to dark grey, fine to medium grained, up to 100 microns in diameter
 GR GRANITE pink to yellow grey, coarse to medium grained, with some porphyry
 PG PERLAMITE pink to light grey, very coarse grained to megacrystic, coarse to medium grained
 QM QUARTZ MONZONITE light to medium grained, very coarse grained, megacrystic, up to 100 microns in diameter
- TRASSIC**
- NEOLA GROUP VOLCANES
- AV ANDESITIC VOLCANES dark grey-green to black, very fine grained to porphyritic
 (MONZONITIC VOLCANES in some photographs of porphyries or porphyries in some cases)
 (MONZONITIC BRECCIA in some photographs of porphyries or porphyries in some cases)
- ALTERATION CODES**
- AL ALKALINE
 AN ANDESITIC
 CH CHLORITE
 EP EPIDERMAL
 HY HYDROTHERMAL
 IS ISLANDIC
 PO PORPHYRY
 QU QUARTZ
 SI SILICIFICATION
 (1 = 1 TO 5, 5 = 5 TO 10)
- SULFIDE CONTENT CODES (quartz veins)**
- S1 S1
 S2 S2
 S3 S3
 S4 S4
 S5 S5
 S6 S6
 S7 S7
 S8 S8
 S9 S9
 S10 S10
 S11 S11
 S12 S12
 S13 S13
 S14 S14
 S15 S15
 S16 S16
 S17 S17
 S18 S18
 S19 S19
 S20 S20
 S21 S21
 S22 S22
 S23 S23
 S24 S24
 S25 S25
 S26 S26
 S27 S27
 S28 S28
 S29 S29
 S30 S30
 S31 S31
 S32 S32
 S33 S33
 S34 S34
 S35 S35
 S36 S36
 S37 S37
 S38 S38
 S39 S39
 S40 S40
 S41 S41
 S42 S42
 S43 S43
 S44 S44
 S45 S45
 S46 S46
 S47 S47
 S48 S48
 S49 S49
 S50 S50
 S51 S51
 S52 S52
 S53 S53
 S54 S54
 S55 S55
 S56 S56
 S57 S57
 S58 S58
 S59 S59
 S60 S60
 S61 S61
 S62 S62
 S63 S63
 S64 S64
 S65 S65
 S66 S66
 S67 S67
 S68 S68
 S69 S69
 S70 S70
 S71 S71
 S72 S72
 S73 S73
 S74 S74
 S75 S75
 S76 S76
 S77 S77
 S78 S78
 S79 S79
 S80 S80
 S81 S81
 S82 S82
 S83 S83
 S84 S84
 S85 S85
 S86 S86
 S87 S87
 S88 S88
 S89 S89
 S90 S90
 S91 S91
 S92 S92
 S93 S93
 S94 S94
 S95 S95
 S96 S96
 S97 S97
 S98 S98
 S99 S99
 S100 S100
- SYMBOLS**
- LITHOLOGIC CONTACT
 --- TRACE OF MINERALIZED STRUCTURE (See legend for rock, mineralized, or fault)
 - - - FAULT OR SEAM
- PLOT OF DRILL HOLE**
- SEE OLD ASSAYS AND ANALYSES < 0.05 g/t Au NOT POSTED

GEOLOGICAL BRANCH
 ASSESSMENT REPORT

24,374

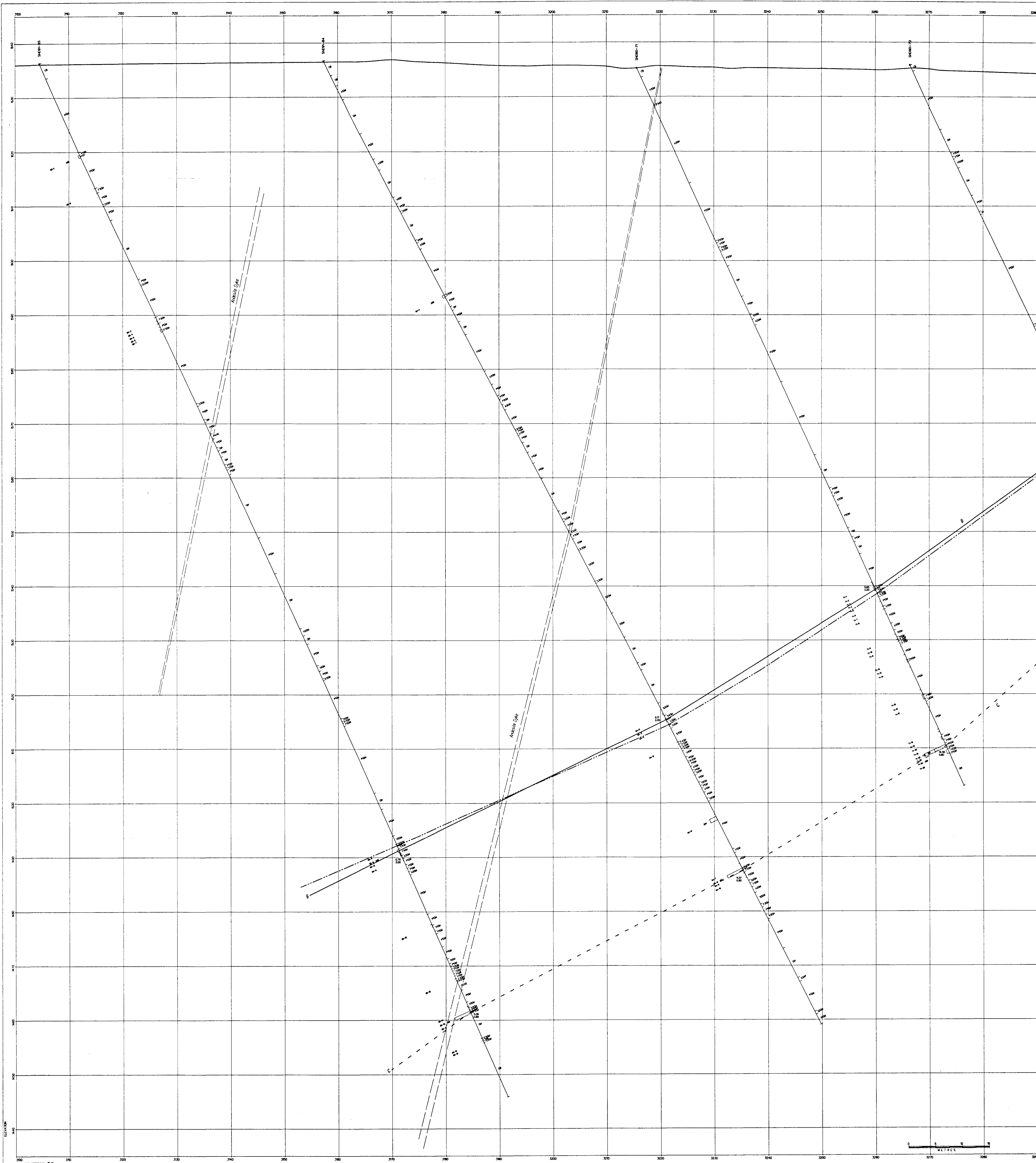
PART 4 OF 7

FAIRFIELD MINERALS LTD.
 1900 - 1905 West Hastings Street, Vancouver, British Columbia V6E 2E9

SIWASH GOLD MINE
 SIWASH NORTH AREA
 DIAMOND DRILL SECTION
 2405E North Half
 SCALE 1 : 250
 LOOKING WEST

Drawn by PWD
 February, 1998

Plate 43



LEGEND

LITHOLOGY

OS GABBRO
 M MESSING CORE
 OS OVERBURDEN

TERTIARY

AO ANDESITE DYKE dark green to olive green
 fine-grained to sandy porphyritic
 B1 BRECCIA fragmental rock in clay or cementation rich
 matrix commonly grades into gneiss
 OC OOLITE
 OV QUARTZ VEH veins in grey quartz with some shaly
 carbonate in 250 cycles and some
 quartz, garnet, epidote, calcite, calcite
 and other minerals

JURASSIC

OSPREY LAKE BATHOLITH

AP APLITE fine to light grey, fine grained, aphanitic, may grade
 into pegmatite
 FP FELDSPAR PORPHYRY fine to medium fine-grained, 1-2 mm rich
 in feldspar
 OC GRANODIORITE OOLITE matrix to dark grey, fine to medium grained, to the
 south of north-south
 OD GRANODIORITE medium to dark grey, fine to medium grained, up
 to 250 cycles of alteration
 OR ORNATE fine to light grey, quartz - 1-2 mm rich with
 some hornblende
 PG PEGMATITE fine to light grey, very coarse grained to
 porphyritic, may contain quartz, calcite, garnet
 and other minerals
 QM QUARTZ ANDESITE fine to medium grained, coarse grained
 porphyritic with up to 250 cycles of alteration

TRUSMIE

NEOLA GROUP VOLCANICS

AV ANDESITE VOLCANICS dark grey-green to red black, very
 fine-grained to aphanitic
 (P) PORPHYRY VOLCANIC as above showing signs of porphyry
 alteration in some places
 (M) MAFIC VOLCANIC as above, transitional (green) with quartzite
 matrix, may contain calcite, up to 250
 cycles of alteration - hornblende - andesite

ALTERATION CODES

A0 ANDESITE
 A1 ANDESITE
 A2 ANDESITE
 A3 ANDESITE
 A4 ANDESITE
 A5 ANDESITE
 A6 ANDESITE
 A7 ANDESITE
 A8 ANDESITE
 A9 ANDESITE
 A10 ANDESITE
 A11 ANDESITE
 A12 ANDESITE
 A13 ANDESITE
 A14 ANDESITE
 A15 ANDESITE
 A16 ANDESITE
 A17 ANDESITE
 A18 ANDESITE
 A19 ANDESITE
 A20 ANDESITE
 A21 ANDESITE
 A22 ANDESITE
 A23 ANDESITE
 A24 ANDESITE
 A25 ANDESITE
 A26 ANDESITE
 A27 ANDESITE
 A28 ANDESITE
 A29 ANDESITE
 A30 ANDESITE
 A31 ANDESITE
 A32 ANDESITE
 A33 ANDESITE
 A34 ANDESITE
 A35 ANDESITE
 A36 ANDESITE
 A37 ANDESITE
 A38 ANDESITE
 A39 ANDESITE
 A40 ANDESITE
 A41 ANDESITE
 A42 ANDESITE
 A43 ANDESITE
 A44 ANDESITE
 A45 ANDESITE
 A46 ANDESITE
 A47 ANDESITE
 A48 ANDESITE
 A49 ANDESITE
 A50 ANDESITE
 A51 ANDESITE
 A52 ANDESITE
 A53 ANDESITE
 A54 ANDESITE
 A55 ANDESITE
 A56 ANDESITE
 A57 ANDESITE
 A58 ANDESITE
 A59 ANDESITE
 A60 ANDESITE
 A61 ANDESITE
 A62 ANDESITE
 A63 ANDESITE
 A64 ANDESITE
 A65 ANDESITE
 A66 ANDESITE
 A67 ANDESITE
 A68 ANDESITE
 A69 ANDESITE
 A70 ANDESITE
 A71 ANDESITE
 A72 ANDESITE
 A73 ANDESITE
 A74 ANDESITE
 A75 ANDESITE
 A76 ANDESITE
 A77 ANDESITE
 A78 ANDESITE
 A79 ANDESITE
 A80 ANDESITE
 A81 ANDESITE
 A82 ANDESITE
 A83 ANDESITE
 A84 ANDESITE
 A85 ANDESITE
 A86 ANDESITE
 A87 ANDESITE
 A88 ANDESITE
 A89 ANDESITE
 A90 ANDESITE
 A91 ANDESITE
 A92 ANDESITE
 A93 ANDESITE
 A94 ANDESITE
 A95 ANDESITE
 A96 ANDESITE
 A97 ANDESITE
 A98 ANDESITE
 A99 ANDESITE
 A100 ANDESITE

SULFIDE CONTENT CODES (quartz veins)

S00 0%
 S01 1-10%
 S02 11-20%
 S03 21-30%
 S04 31-40%
 S05 41-50%
 S06 51-60%
 S07 61-70%
 S08 71-80%
 S09 81-90%
 S10 91-100%

SYMBOLS

— LITHOLOGIC CONTACT
 --- TRACE OF UNDEVELOPED STRUCTURE (the type often for some
 structural forms shown on sections)
 - - - - - FAULT OR BREAK

PLOT OF DRILL HOLE

SEE PLAN OF SECTION
 SK09-10
 SK09-14
 SK09-17
 SK09-20
 SK09-21
 SK09-22
 SK09-23
 SK09-24
 SK09-25
 SK09-26
 SK09-27
 SK09-28
 SK09-29
 SK09-30
 SK09-31
 SK09-32
 SK09-33
 SK09-34
 SK09-35
 SK09-36
 SK09-37
 SK09-38
 SK09-39
 SK09-40
 SK09-41
 SK09-42
 SK09-43
 SK09-44
 SK09-45
 SK09-46
 SK09-47
 SK09-48
 SK09-49
 SK09-50
 SK09-51
 SK09-52
 SK09-53
 SK09-54
 SK09-55
 SK09-56
 SK09-57
 SK09-58
 SK09-59
 SK09-60
 SK09-61
 SK09-62
 SK09-63
 SK09-64
 SK09-65
 SK09-66
 SK09-67
 SK09-68
 SK09-69
 SK09-70
 SK09-71
 SK09-72
 SK09-73
 SK09-74
 SK09-75
 SK09-76
 SK09-77
 SK09-78
 SK09-79
 SK09-80
 SK09-81
 SK09-82
 SK09-83
 SK09-84
 SK09-85
 SK09-86
 SK09-87
 SK09-88
 SK09-89
 SK09-90
 SK09-91
 SK09-92
 SK09-93
 SK09-94
 SK09-95
 SK09-96
 SK09-97
 SK09-98
 SK09-99
 SK09-100

NOTE: OLD ASSAYS AND AVERAGES < 0.05 g/t Au NOT POSTED

4 GEOLOGICAL BRANCH
 ASSESSMENT REPORT

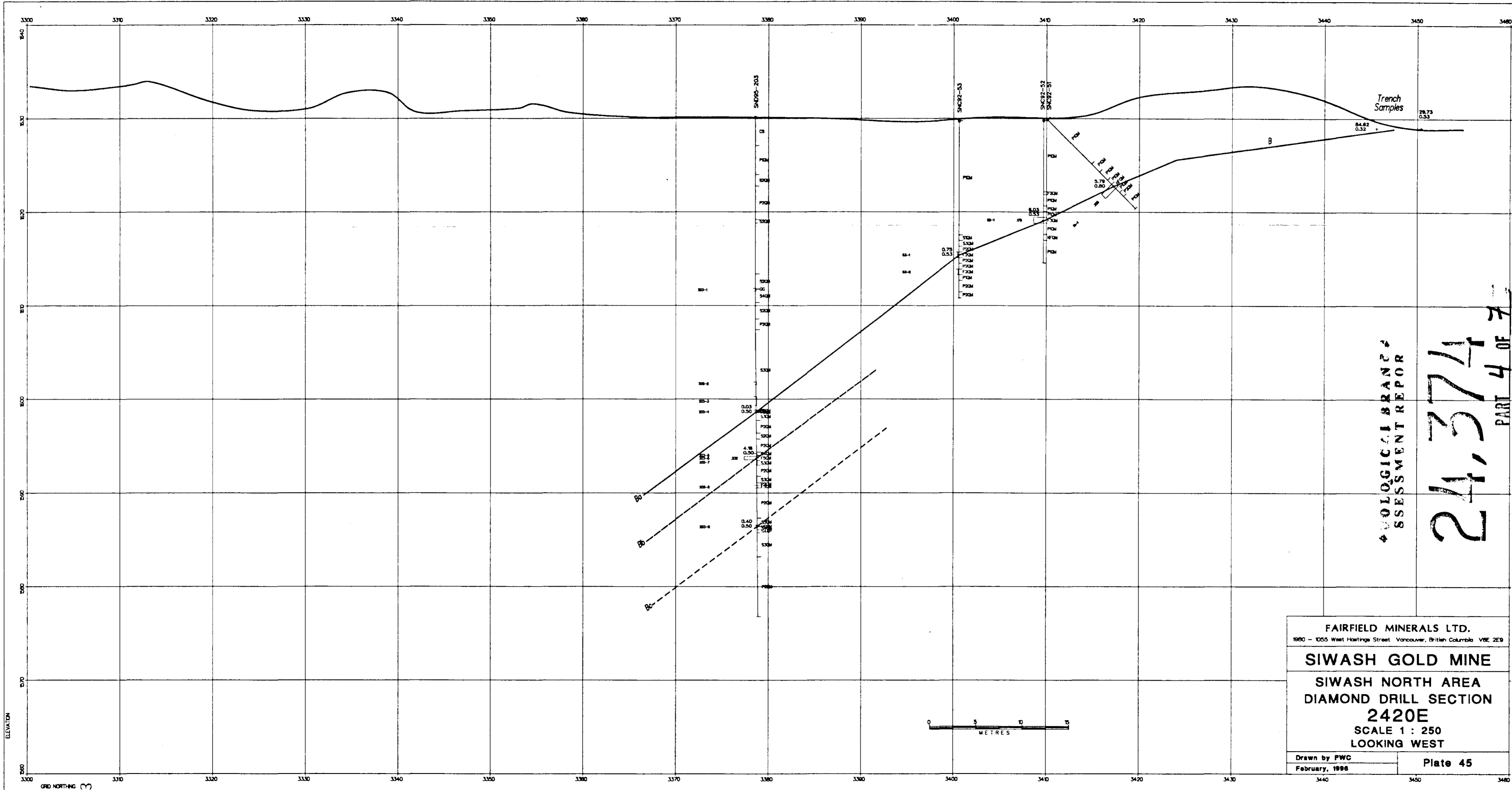
24,374
 PART 4 OF 7

FAIRFIELD MINERALS LTD.
 1050 - 1055 West Hastings Street, Vancouver, British Columbia V6E 2E9

SIWASH GOLD MINE
 SIWASH NORTH AREA
 DIAMOND DRILL SECTION
 2405E South Half
 SCALE 1 : 250
 LOOKING WEST

Drawn by PWC
 February, 1988

Plate 44



LEGEND

LITHOLOGY

CS CASING
 M MISSING CORE
 OS OVERBLINDEN

TERTIARY

AO ANDESITE DYKE dark grayish-green to olive green, fine-grained to weakly porphyritic
 BR BRECCIA fragmented rock in a clay or clay-chert rich matrix, commonly grades into gouge
 GC GOUGE clay-rich with numerous rock fragments, shear foliation or banding may be evident
 QV QUARTZ VEIN white to gray quartz with some orthoclase, commonly 1% to 20% pyrite with lesser chloropyrite, pyrrhotite, sphalerite, galena, tetrahedrite, rare visible gold

JURASSIC

OSPREY LAKE BATHOLITH

AP APLITE pink to light gray, fine grained, aegirine, may grade into pegmatite
 FP FELDSPAR PORPHYRY pink to red, medium fine-grained, li-spar rich
 GC GRANODIORITE CHILL MARGIN medium to dark gray, fine grained up to 15% biotite or hornblende
 GD GRANODIORITE medium to dark gray, fine to medium grained up to 15% biotite or hornblende
 GR GRANITE pink to pinkish gray, quartz - li-spar rich with some hornblende
 PG PEGMATITE pink to light gray, very coarse grained to megacrystic quartz - li-spar - muscovite rich
 QM QUARTZ MONZONITE light to medium pinkish gray, coarse grained, aegirine with up to 15% biotite or hornblende

TRASSIC

NOCLA GROUP VOLCANICS

AV ANDESITIC VOLCANICS dark gray-green to near black, very fine-grained to aphanitic
 (P)PORPHYRIC VOLCANIC as above, phenocrysts of plagioclase or hornblende to about 20%
 (V)VOLCANIC BRECCIA as above, brecciated (primary) with andesitic matrix, matrix may contain up to 20% pyrite - pyrrhotite - chloropyrite

ALTERATION CODES

A(n)	ANDELTIC	P(n)	PREHYDRATE
PH(n)	PHYLIC	SE(n)	SERITIC
K(n)	K-spar STABLE PHYLIC	SK(n)	SKARN
PO(n)	POTASSIC	SI(n)	SILICIFICATION

(n = 1 TO 5, WEAK TO INTENSE)

SULFIDE CONTENT CODES (quartz veins)

1	less than 1% sulfide
2	1% to 5% sulfide
3	5% - 10% sulfide
4	10% - 20% sulfide
5	20% - 30% sulfide
6	greater than 30% sulfide

SYMBOLS

— LITHOLOGIC CONTACT
 — TRACE OF MINERALIZED STRUCTURE (line types differ by zone, individual zones labeled on sections)
 - - - - - FAULT OR SHEAR

PLOT OF DRILL HOLE

FAIRFIELD MINERALS LTD.
 1980 - 1055 West Hastings Street Vancouver, British Columbia V6E 2E9

SIWASH GOLD MINE
 SIWASH NORTH AREA
 DIAMOND DRILL SECTION
 2420E
 SCALE 1 : 250
 LOOKING WEST

Drawn by PWC
 February, 1986

Plate 45

NOTE: GOLD ASSAYS AND AVERAGES < 0.05 oz/ton NOT POSTED

GEOLOGICAL BRANCH
 ASSESSMENT REPORT
 24,374
 PART 4 OF 7