

GEOLOGICAL SURVEY BRANCH
ASSESSMENT REPORTS

DATE RECEIVED

MAY 15 1996

GEOPHYSICAL REPORT
BROAD MINERAL CLAIM
NTS#92H/10
Lat.49°38'N, Long.120°31'E.
Similkameen Mining Division

Report By: G.M.Rodgers, P.Eng.
P.O.Box 63,
Skookumchuck, B.C. VOB 2E0
Ph.(604)422-3748

February, 1996

FILMED

GEOLOGICAL BRANCH
ASSESSMENT REPORT

24,412

(i)
SUMMARY

Five days were spent gathering magnetometer and VLF data on the Broad claim from Nov.28-Dec.2, 1996. Work was hampered by severe flooding in Princeton and by poor access due to soft snow. Approximately 500 readings were taken by magnetometer and VLF (two channels) using a Gem System GSM-19 Overhauser Magnetometer and VLF.

TABLE OF CONTENTS

INTRODUCTION	page 1
LOCATION AND ACCESS	" 1
CLAIM STATUS	" 1
PAST WORK	" 1
GEOPHYSICS	" 1
CONCLUSIONS AND RECOMMENDATIONS	" 3
APPENDIX I (Raw Data)	9
Fig.1, Index Map	2
Fig.2, Location Map	6
Fig.3, Claim Map	7
Fig.4, Magnetometer Profiles	(in pocket)
Fig.5, VLF Profiles	(in pocket)
Fig.6, Grid Area (1:20,000)	8
Statement of Qualifications	4
Statement of Costs	5

(1)

INTRODUCTION

The Broad property is an alkaline porphyry copper prospect located in the Princeton-Merritt copper belt of south-central B.C.. It is underlain by Nicola (Triassic) group volcanic, intrusive and sedimentary.

LOCATION AND ACCESS

The Broad property is located 20km north of Princeton, B.C. and about 1 km west of the Summers Creek valley. Access is via the Princeton - Merritt highway onto Summers Creek road and then from about 5km on the Summers Creek road to a 4*4 dirt road which leads north and west onto the claim.

CLAIM STATUS

The property consists of one 9 unit claim (Broad) with record #333900 which expires Feb.11,1999. The claim is owned 100% by the author.

PAST WORK

The Broad property has had numerous exploration programs carried out on it. Several mining companies have mapped, sampled, trenched and drilled on the claims.

GEOPHYSICS

Approximately 500 readings were taken using a GemSystem GSM-19 Overhauser magnetometer and VLF. Magnetometer results are plotted at 1:2000 scale as Fig.4 .Only corrected total field data were used for plotting. Two sets of VLF data were collected; Annapolis ,USA and Lualualei ,USA. Lualualei was the strongest signal and only it was plotted as Fig.5. All data was filtered before plotting. Raw data is included as Appendix I.

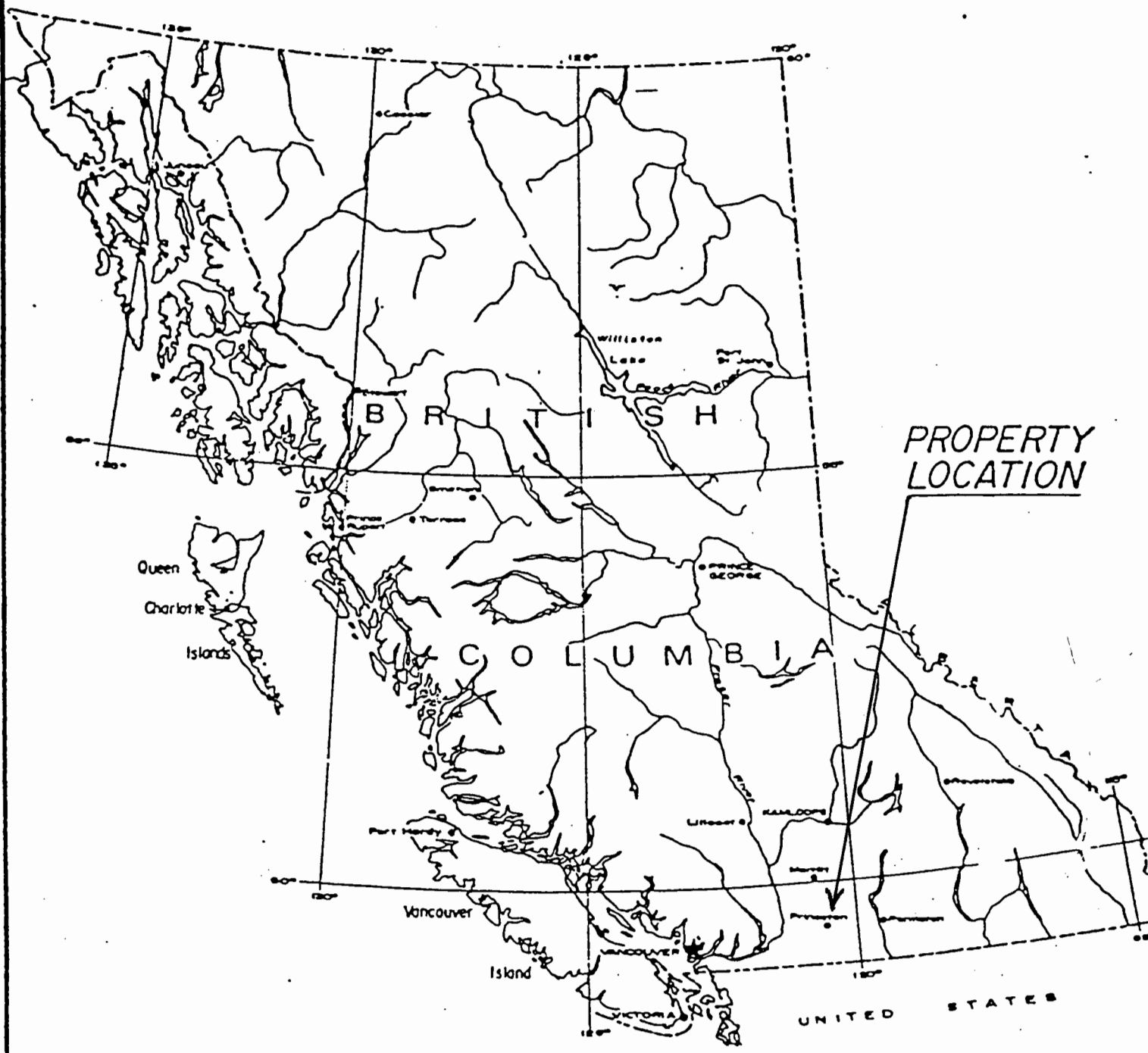


Figure 1

LOCATION MAP



CONCLUSIONS AND RECOMMENDATIONS

An arcuate northerly trend of moderate magnetic highs is evident near the eastern edge of the grid area. Two of these mag highs (L1000N, L900N) coincide with existing old bulldozer trenches. Malachite was observed in float near one of these trenches.

A few strong VLF anomalies exist on lines 1100N-1300N, the strongest being at: L1300N,715E , L1300N,990E , L1200N,560E , L1100N,810E , L1100N,850E , L1100N,1160E , L1100N,1270E. Several weaker anomalies exist on lines 1100E-1300E. Lines 900N and 1000N are either extremely anomalous or contain bad (inverted) data. These lines should be re-done as the latter is more likely.

Several other targets exists on the grid area that could be trenched.

CERTIFICATE

I, Glen M. Rodgers of Skookumchuck, Province of British Columbia, hereby certify as follows:

-I am a consulting geologist presently registered with the Association of Professional Engineers of British Columbia.

-I graduated from the University of Manitoba in 1977 with a bachelors degree in Geological Engineering.

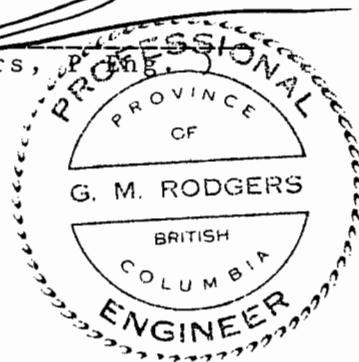
-I have practised my profession continuously since graduation in British Columbia, Yukon Territory, Alaska and Central America working primarily in the field of mineral exploration.

-I have based this report on personal observation and work done during 1995.

-I am presently the 100% owner of the Broad Mineral Claim.

August 10, 1995

(Glen M. Rodgers, P. Eng.)



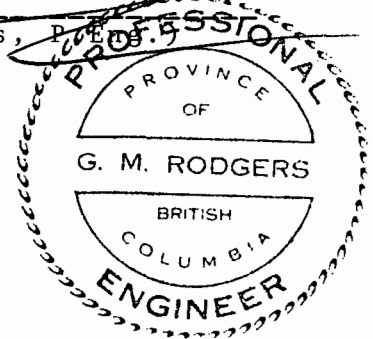
(5)

STATEMENT OF COSTS

G.Rodgers, P.Eng.(5 days @ \$250./day)	\$ 1250.
(NB.this includes 2 days travel time and 1 day wasted due to flooding in Princeton and poor access (getting stuck in snow)(did some research & data compilation)	
4*4 truck (5 days @ \$60./day)	\$ 300.
gas (Cranbrook - Princeton & return)	\$ 200.
Groceries / Meals (5 days @ \$25./day)	\$ 125.
GSM-19 Mag/VLF rental(5 days @ \$100./day)	\$ 500.
Computer plotting (1 office day)	\$ 200.
Total Cost =	<u>\$ 2700.</u>

-Certified Correct,

~~G. M. Rodgers, P.Eng.~~



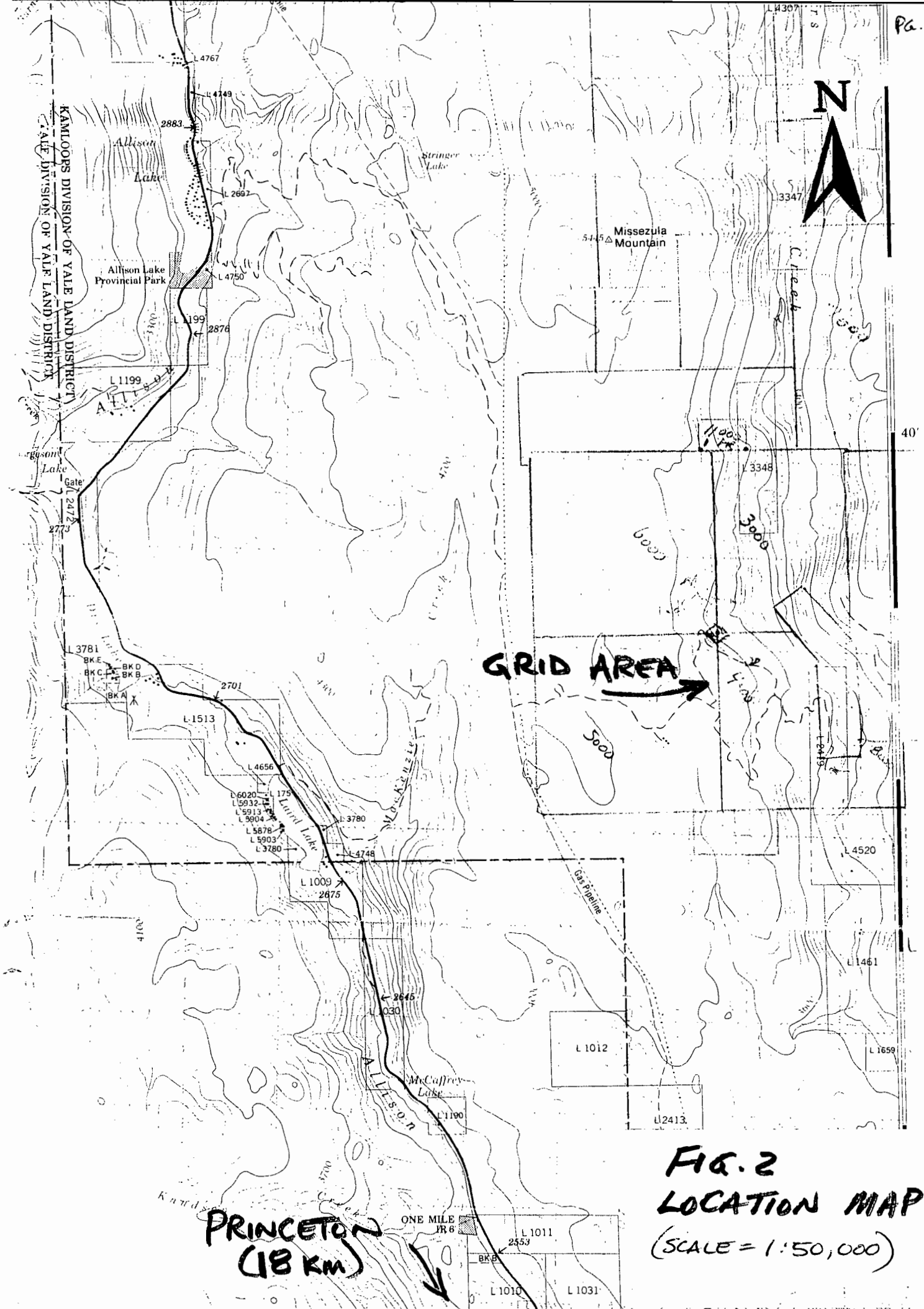
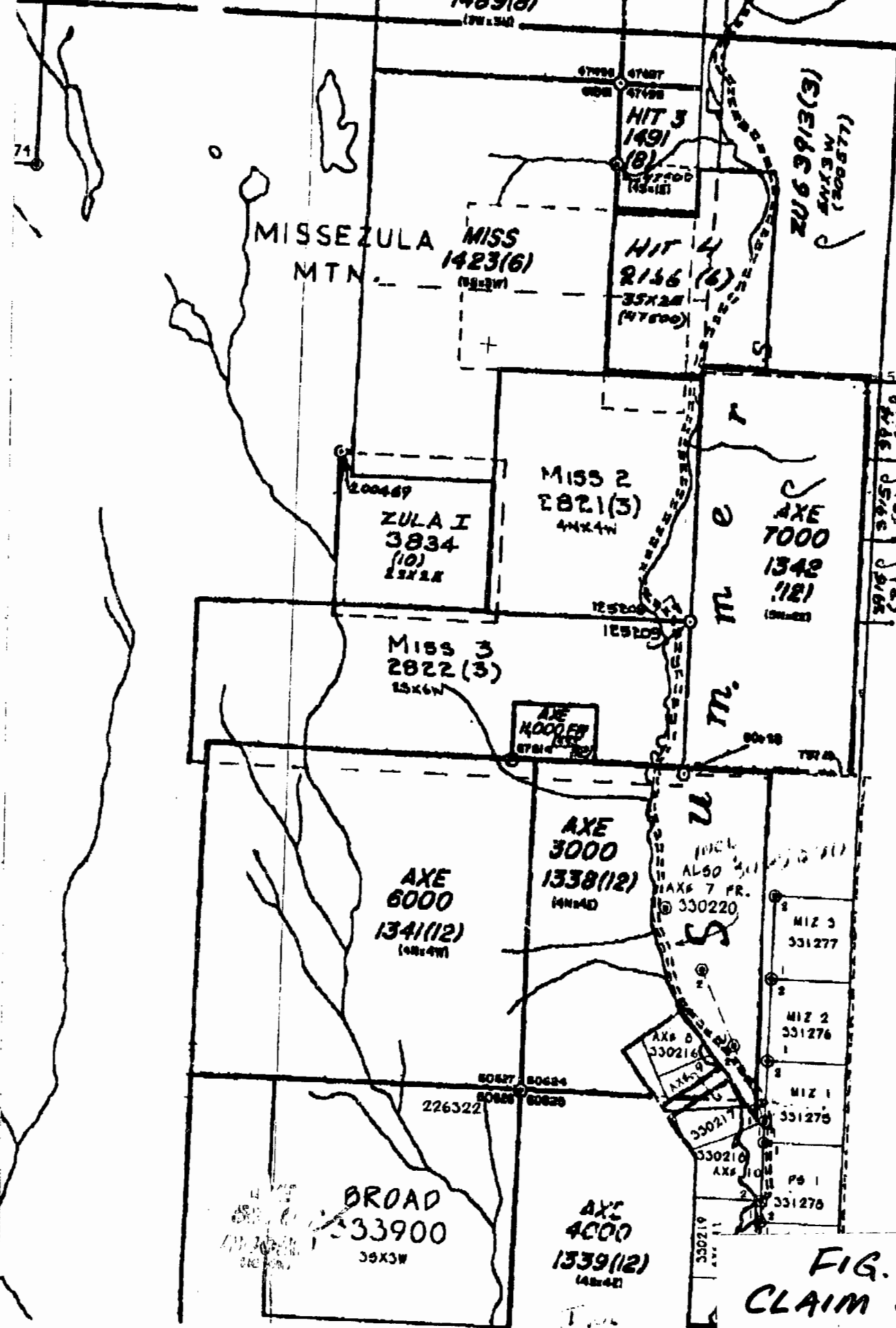
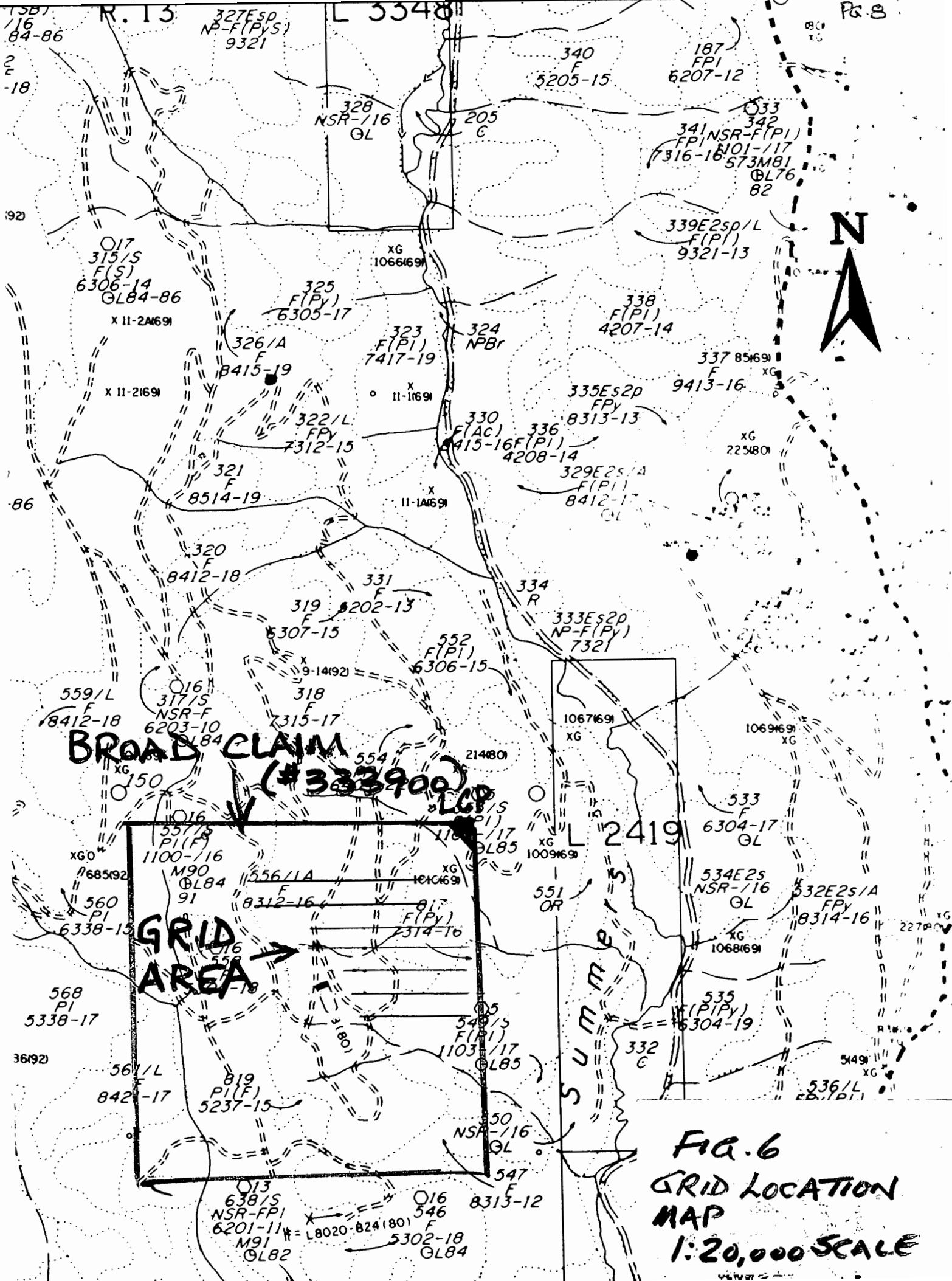


FIG. 2
LOCATION MAP
(SCALE = 1:50,000)



**FIG. 3
CLAIM MAP
SCALE = 1:31,680**

NO. 5
PAGES
EOLK
SLIDE



BROAD CLAIM (#333900)

GRID AREA

**FIG. 6
GRID LOCATION
MAP
1:20,000 SCALE**

LINE NUMBER
 STATION NUMBER
 CORRECTED MAGNETOMETER READINGS
 ANNAPOLIS, USA.
 IN-PHASE (%)
 OUT-OF-PHASE (%)
 FIELD STRENGTH (PT)
 LUALUAI, USA.

c:broad.xyz line=1 column=7 size=523 memory=403K

```

* * * * *
1300N 1200E 57742.21 21.4 -008.0 -000.1 001.0 23.4 -015.3 +007.3 0.
1300N 1190E 57592.15 21.4 -005.4 +000.8 001.1 23.4 -011.2 +009.6 0.
1300N 1180E 57447.92 21.4 -004.2 -001.5 001.1 23.4 -012.5 +002.5 0.
1300N 1170E 57538.13 21.4 -004.0 -001.2 001.0 23.4 -006.6 +001.8 0.
1300N 1160E 57431.37 21.4 -004.7 -001.1 001.1 23.4 -007.7 -002.2 0.
1300N 1150E 57357.40 21.4 -000.4 +000.1 001.1 23.4 -005.8 +006.4 0.
1300N 1140E 57352.60 21.4 -002.1 -001.2 001.0 23.4 -010.6 -001.2 0.
1300N 1130E 57396.34 21.4 -002.6 +000.0 001.1 23.4 -009.9 -003.0 0.
1300N 1120E 57445.18 21.4 -004.0 -000.2 001.0 23.4 -011.9 +010.5 0.
1300N 1110E 57593.05 21.4 -002.7 -000.1 001.1 23.4 -003.9 +007.0 0.
1300N 1100E 57591.50 21.4 -001.4 +000.1 001.1 23.4 -002.4 +001.1 0.
1300N 1090E 57599.10 21.4 -000.1 -000.3 001.0 23.4 +013.6 +017.9 0.
1300N 1080E 57666.50 21.4 -000.5 -000.7 001.1 23.4 -008.8 -002.7 0.
1300N 1070E 57696.66 21.4 -000.7 +000.4 001.0 23.4 +000.1 +005.5 0.
1300N 1060E 57762.53 21.4 +001.3 +001.1 001.0 23.4 -003.9 -005.6 0.
1300N 1050E 57886.20 21.4 +000.1 +001.2 001.0 23.4 -000.4 +003.5 0.
1300N 1040E 57867.48 21.4 +001.8 +001.4 001.0 23.4 +000.8 -000.8 0.
1300N 1030E 57875.12 21.4 +002.6 -000.8 001.1 23.4 -004.1 +002.1 0.
1300N 1020E 58049.49 21.4 +003.2 +000.9 001.0 23.4 +009.0 -002.8 0.
1300N 1010E 57923.50 21.4 +004.7 +000.6 001.0 23.4 +016.4 +001.4 0.
=====
  
```

F2=ADDLN F3=SAVE F4=FILE ALT-(B=BLOCK L=BLINE K=BCOPY M=BMOVE G=BDEL D=DEL)

c:broad.xyz line=21 column=7 size=523 memory=403K

```

1300N 1010E 57923.50 21.4 +004.7 +000.6 001.0 23.4 +016.4 +001.4 0.
1300N 1000E 57956.97 21.4 +006.7 +000.8 001.0 23.4 +002.6 +004.3 0.
1300N 0990E 57967.13 21.4 +004.2 +002.1 001.0 23.4 -004.3 +022.2 0.
1300N 0980E 58014.79 21.4 +004.1 +004.4 001.0 23.4 +002.7 -007.2 0.
1300N 0970E 58038.29 21.4 +002.0 +000.1 001.0 23.4 +007.3 +003.3 0.
1300N 0960E 58055.34 21.4 +000.9 +003.3 001.0 23.4 +000.8 +010.2 0.
1300N 0950E 58138.47 21.4 -000.4 +004.8 001.1 23.4 +000.3 +015.6 0.
1300N 0940E 58228.43 21.4 +000.2 +004.6 001.0 23.4 -019.7 +003.8 1.
1300N 0930E 58310.97 21.4 -001.3 +003.7 001.0 23.4 -008.5 +009.8 0.
1300N 0920E 58394.39 21.4 -001.6 +001.9 001.0 23.4 -008.1 +013.9 0.
1300N 0910E 58521.40 21.4 -001.8 +001.6 001.0 23.4 -006.7 +014.3 0.
1300N 0900E 58695.39 21.4 -000.8 +003.6 001.0 23.4 -010.1 +002.2 0.
1300N 0890E 58810.33 21.4 -003.8 +002.8 001.0 23.4 -003.9 +011.4 0.
1300N 0880E 58776.06 21.4 -000.7 +001.4 001.0 23.4 -004.6 +007.1 0.
1300N 0870E 58623.05 21.4 +001.5 +001.4 001.0 23.4 +000.0 +021.9 0.
1300N 0860E 58539.85 21.4 +001.8 +001.3 001.0 23.4 +011.4 -000.6 0.
1300N 0850E 58439.04 21.4 +004.0 +003.1 001.0 23.4 +004.1 +012.4 0.
1300N 0840E 58253.05 21.4 +000.8 +001.6 001.0 23.4 +005.0 -003.2 0.
1300N 0830E 58036.29 21.4 +003.1 +000.9 001.0 23.4 -001.5 +002.5 0.
1300N 0820E 57964.08 21.4 +003.1 +001.2 001.0 23.4 +006.7 +006.2 0.
1300N 0810E 57939.21 21.4 +003.0 -000.3 001.0 23.4 +010.3 +003.5 0.
  
```

c:broad.xyz line=41 column=7 size=523 memory=403K

1300N	0810E	57939.21	21.4	+003.0	-000.3	001.0	23.4	+010.3	+003.5	0.
1300N	0800E	57918.70	21.4	+002.8	+000.5	000.9	23.4	+006.2	+005.3	0.
1300N	0790E	57895.71	21.4	+003.9	-000.6	001.0	23.4	+009.8	+003.8	0.
1300N	0780E	57848.89	21.4	+003.4	-000.3	001.0	23.4	+002.8	+005.5	0.
1300N	0770E	57835.52	21.4	+003.8	-000.4	001.0	23.4	+013.7	+002.4	0.
1300N	0760E	57839.50	21.4	+004.5	+000.2	001.0	23.4	+004.6	+004.1	0.
1300N	0750E	57870.99	21.4	+004.6	+002.8	001.0	23.4	+004.5	+013.4	0.
1300N	0740E	57904.66	21.4	+006.6	-000.3	000.9	23.4	+004.5	+008.3	1.
1300N	0730E	57903.20	21.4	+005.7	+001.4	001.0	23.4	+000.0	+005.4	1.
1300N	0720E	57940.99	21.4	+007.9	+001.2	000.9	23.4	+008.0	+003.7	0.
1300N	0710E	57951.34	21.4	+008.0	+000.0	000.9	23.4	+003.0	+000.0	0.
1300N	0700E	57926.13	21.4	+006.9	+002.5	000.9	23.4	+010.4	-003.3	0.
1300N	0690E	57932.92	21.4	+008.5	+004.7	000.9	23.4	-004.1	+000.0	1.
1300N	0680E	57937.14	21.4	+010.4	+002.9	000.9	23.4	+000.0	+002.1	1.
1300N	0670E	57952.78	21.4	+010.6	+002.7	000.9	23.4	+001.8	+002.8	0.
1300N	0660E	57913.86	21.4	+010.6	+003.3	000.9	23.4	-001.5	+004.3	1.
1300N	0650E	57945.49	21.4	+009.0	+003.2	000.8	23.4	+000.3	+009.3	-0.
1300N	0640E	57804.70	21.4	+004.9	+002.1	000.9	23.4	-002.8	+004.1	-1.
1300N	0630E	57827.66	21.4	+003.5	+000.0	000.9	23.4	+000.2	+006.2	1.
1300N	0620E	57788.95	21.4	+004.2	+002.7	000.9	23.4	-015.5	+007.2	1.
1300N	0610E	57746.08	21.4	+004.4	-001.5	000.9	23.4	-007.7	+003.4	1.

====>

F2=ADDLN F3=SAVE F4=FILE ALT-(H=BLOCK L=BLINE K=BCOPY M=BMOVE G=BDEL D=DEL)

c:broad.xyz line=61 column=7 size=523 memory=403K

1300N	0610E	57746.08	21.4	+004.4	-001.5	000.9	23.4	-007.7	+003.4	1.
1300N	0600E	57697.17	21.4	+004.5	-000.3	000.9	23.4	-001.0	+008.9	1.
1300N	0590E	57675.04	21.4	+003.7	-001.8	000.9	23.4	-011.1	+002.7	1.
1300N	0580E	57639.84	21.4	+006.0	-000.9	000.9	23.4	-010.6	+003.2	1.
1300N	0570E	57615.65	21.4	+004.9	-002.5	000.9	23.4	-016.9	+001.2	1.
1300N	0560E	57584.70	21.4	+004.7	-002.4	000.9	23.4	-012.0	+001.3	1.
1300N	0550E	57557.34	21.4	+006.7	-003.8	000.8	23.4	-011.8	+005.0	1.
1300N	0540E	57554.84	21.4	+003.7	-006.2	000.8	23.4	-019.8	+003.5	1.
1300N	0530E	57555.24	21.4	-001.7	-006.9	000.8	23.4	-018.0	+002.9	1.
1300N	0520E	57511.23	21.4	-000.5	-006.6	000.8	23.4	-018.1	+004.1	1.
1300N	0510E	57463.61	21.4	-006.3	-011.4	000.8	23.4	-017.6	+003.7	0.
1300N	0500E	57495.01	21.4	-004.8	-013.5	000.8	23.4	-016.3	+002.1	1.
1300N	0490E	57561.81	21.4	-006.1	-008.5	000.9	23.4	-021.8	+004.7	1.
1300N	0480E	57586.39	21.4	-000.9	-008.0	000.8	23.4	-023.0	+002.9	0.
1300N	0470E	57562.78	21.4	+000.4	-012.2	000.9	23.4	-021.9	+003.8	0.
1200N	0470E	57481.46	21.4	-000.9	+009.3	000.8	23.4	+019.3	+000.7	1.
1200N	0480E	57511.37	21.4	-000.6	+008.6	000.8	23.4	+018.0	-002.2	1.
1200N	0490E	57543.07	21.4	+014.8	+009.2	000.9	23.4	-001.0	+036.0	0.
1200N	0500E	57570.10	21.4	-000.1	+007.3	000.8	23.4	+016.3	-005.5	-1.
1200N	0510E	57568.69	21.4	+000.2	+004.7	000.9	23.4	+014.1	-005.9	1.
1200N	0520E	57592.81	21.4	-000.7	+008.3	000.9	23.4	+013.5	-003.9	1.

====>

F2=ADDLN F3=SAVE F4=FILE ALT-(H=BLOCK L=BLINE K=BCOPY M=BMOVE G=BDEL D=DEL)

c:broad.xyz line=81 column=7 size=523 memory=403K

1200N	0520E	57592.81	21.4	-000.7	+008.3	000.9	23.4	+013.5	-003.9	1.
1200N	0530E	57597.59	21.4	+000.2	+012.8	000.7	23.4	+011.6	-004.0	1.
1200N	0540E	57618.28	21.4	+001.1	+004.9	000.9	23.4	+009.1	-002.6	1.
1200N	0550E	57613.78	21.4	+000.5	+006.5	000.9	23.4	+031.4	-016.7	0.
1200N	0560E	57589.00	21.4	+003.8	+006.9	000.8	23.4	+007.1	-003.8	1.
1200N	0570E	57545.02	21.4	+004.3	+009.0	000.9	23.4	+006.9	-005.0	1.
1200N	0580E	57514.99	21.4	+002.9	+005.7	000.8	23.4	+007.9	-003.0	1.
1200N	0590E	57514.38	21.4	+001.7	+005.3	000.8	23.4	+008.0	-002.0	1.
1200N	0600E	57531.79	21.4	+001.3	+005.3	000.8	23.4	+005.3	-002.4	1.
1200N	0610E	57596.78	21.4	+000.6	+007.1	000.8	23.4	+005.1	-006.1	1.
1200N	0620E	57611.48	21.4	+000.1	+003.4	000.8	23.4	+011.9	-003.0	1.

1200N	0530E	57513.78	21.4	+000.5	+006.9	000.9	23.4	+031.4	-016.7	0.
1200N	0560E	57589.00	21.4	+003.8	+006.9	000.8	23.4	+007.1	-003.8	1.
1200N	0570E	57545.02	21.4	+004.3	+009.0	000.9	23.4	+006.9	-005.0	1.
1200N	0580E	57514.99	21.4	+002.9	+005.7	000.8	23.4	+007.9	-003.0	1.
1200N	0590E	57514.38	21.4	+001.7	+005.3	000.8	23.4	+008.0	-002.0	1.
1200N	0600E	57582.79	21.4	+001.8	+005.3	000.8	23.4	+005.3	-002.4	1.
1200N	0610E	57596.78	21.4	+000.6	+007.1	000.8	23.4	+005.1	-000.5	1.
1200N	0620E	57611.48	21.4	+000.1	+003.4	000.8	23.4	+015.9	-003.0	0.
1200N	0630E	57633.90	21.4	+002.6	+007.8	000.8	23.4	+001.9	-003.8	1.
1200N	0640E	57647.52	21.4	+005.7	+006.6	000.9	23.4	-001.1	-001.8	1.
1200N	0650E	57661.40	21.4	+001.2	+004.2	000.8	23.4	+002.6	-004.2	0.
1200N	0660E	57656.29	21.4	+004.2	+003.2	000.9	23.4	-003.2	-000.9	1.
1200N	0670E	57657.67	21.4	-002.0	+000.9	000.7	23.4	-004.3	-001.3	1.
1200N	0680E	57650.79	21.4	+000.0	+007.1	000.9	23.4	-006.2	-001.8	1.
1200N	0690E	57635.67	21.4	+006.4	-000.4	000.7	23.4	-005.8	-001.2	1.
1200N	0700E	57576.69	21.4	+005.1	+006.7	000.8	23.4	-005.7	-000.8	0.
1200N	0710E	57534.98	21.4	+001.0	+005.6	000.8	23.4	-006.1	+000.9	1.
1200N	0720E	57476.09	21.4	+000.5	+005.3	000.8	23.4	-010.1	+001.3	1.

====>

F2=ADDLN F3=SAVE F4=FILE ALT-(B=BLOCK L=BLINE K=BCOPY M=BMOVE G=BDEL D=DEL)

c:broad.xyz line=101 column=7 size=523 memory=403K

1200N	0720E	57476.09	21.4	+000.5	+005.3	000.8	23.4	-010.1	+001.3	1.
1200N	0730E	57567.99	21.4	-002.6	+002.3	000.8	23.4	-009.1	-000.2	1.
1200N	0740E	57627.44	21.4	+006.5	+003.1	000.7	23.4	+010.2	+000.0	1.
1200N	0750E	57640.41	21.4	-004.8	-003.2	000.7	23.4	-007.9	-001.8	1.
1200N	0760E	57694.07	21.4	-000.2	+002.1	000.8	23.4	-009.2	-000.3	1.
1200N	0770E	57696.66	21.4	-005.9	+001.9	000.8	23.4	-013.9	+000.8	1.
1200N	0780E	57693.87	21.4	-000.8	-006.6	000.7	23.4	-015.9	+000.1	1.
1200N	0790E	57676.13	21.4	-000.1	-003.2	000.8	23.4	-018.1	-001.5	1.
1200N	0800E	57626.04	21.4	-009.6	-002.6	000.7	23.4	-023.2	-001.1	1.
1200N	0810E	57626.93	21.4	-010.8	-001.6	000.8	23.4	-020.4	+000.4	1.
1200N	0820E	57650.06	21.4	-008.2	-002.4	000.8	23.4	-023.0	+002.4	1.
1200N	0830E	57598.19	21.4	-005.1	-003.7	000.7	23.4	-020.8	-003.8	1.
1200N	0840E	57586.67	21.4	-008.8	-002.5	000.8	23.4	-015.2	-001.7	0.
1200N	0850E	57570.05	21.4	-012.3	+005.1	000.8	23.4	-017.2	-004.5	1.
1200N	0860E	57609.76	21.4	-009.2	+005.1	000.8	23.4	-016.3	-006.0	1.
1200N	0870E	57594.19	21.4	-014.8	+003.0	000.8	23.4	-009.5	-004.2	1.
1200N	0880E	57577.89	21.4	-015.7	+004.1	000.8	23.4	-006.7	-006.7	1.
1200N	0890E	57688.76	21.4	-017.0	+006.3	000.8	23.4	-006.1	-005.2	1.
1200N	0900E	57734.60	21.4	-012.5	+004.3	000.8	23.4	+001.7	-008.4	1.
1200N	0910E	57829.62	21.4	-006.5	+005.1	000.8	23.4	-001.4	-007.0	1.
1200N	0920E	57861.02	21.4	-009.2	+004.2	000.9	23.4	-002.0	-006.2	1.

====>

F2=ADDLN F3=SAVE F4=FILE ALT-(B=BLOCK L=BLINE K=BCOPY M=BMOVE G=BDEL D=DEL)

c:broad.xyz line=121 column=7 size=523 memory=403K

1200N	0920E	57861.02	21.4	-009.2	+004.2	000.9	23.4	-002.0	-006.2	1.
1200N	0930E	57885.85	21.4	-005.7	+002.2	000.8	23.4	-003.2	-005.7	1.
1200N	0940E	57893.02	21.4	-002.2	+001.8	000.9	23.4	-001.3	-007.2	1.
1200N	0950E	57902.74	21.4	-002.3	+004.8	000.9	23.4	+008.3	-011.6	0.
1200N	0960E	57932.40	21.4	+000.3	+002.7	000.9	23.4	-000.4	-007.2	1.
1200N	0970E	57958.75	21.4	+000.1	+000.1	000.9	23.4	+004.0	-005.4	1.
1200N	0980E	57963.99	21.4	+000.8	+006.6	000.7	23.4	+003.1	-005.4	1.
1200N	0990E	58010.11	21.4	-001.1	+001.0	000.9	23.4	+001.2	-004.6	1.
1200N	1000E	58115.65	21.4	+002.0	+002.0	000.8	23.4	+001.2	-005.0	1.
1200N	1010E	58125.26	21.4	-004.0	+002.3	000.8	23.4	+003.2	-002.0	1.
1200N	1020E	58103.00	21.4	+001.4	+003.3	000.8	23.4	+000.3	-002.8	1.
1200N	1030E	58113.55	21.4	+000.0	+000.5	000.9	23.4	+000.0	-002.8	1.
1200N	1040E	58197.46	21.4	+002.9	+001.3	000.8	23.4	+000.2	-001.7	1.
1200N	1050E	58214.51	21.4	+000.6	+000.1	000.9	23.4	-002.3	-002.4	1.
1200N	1060E	58077.83	21.4	-001.4	+001.4	000.9	23.4	-003.1	-001.0	1.
1200N	1070E	58250.55	21.4	-001.7	+001.5	000.8	23.4	+001.6	-000.4	1.
1200N	1080E	58340.24	21.4	-000.9	+001.5	000.9	23.4	+000.2	+001.2	1.

```

1200N 1070E 56230.55 21.4 -001.7 +001.5 000.8 23.4 +001.6 -000.4 1.
1200N 1080E 56340.24 21.4 -000.9 +001.5 000.9 23.4 +000.2 +001.2 1.
1200N 1090E 57920.36 21.4 +002.7 +006.1 000.9 23.4 +001.0 -000.6 1.
1200N 1100E 57718.25 21.4 +000.0 +002.5 000.9 23.4 +003.0 -002.2 1.
1200N 1110E 57491.69 21.4 -000.9 +004.6 000.9 23.4 -000.4 +000.4 1.
1200N 1120E 57418.70 21.4 +001.4 -000.3 000.9 23.4 +001.2 -000.8 1.

```

====>

F2=ADDLN F3=SAVE F4=FILE ALT-{ B=BLOCK L=BLINE K=BCOPY M=BMOVE G=BDEL D=DEL }

c:broad.xyz line=141 column=7 size=523 memory=403K

```

1200N 1120E 57418.70 21.4 +001.4 -000.3 000.9 23.4 +001.2 -000.8 1.
1200N 1130E 57321.65 21.4 +000.8 +000.0 000.9 23.4 +000.4 -001.6 1.
1200N 1140E 57354.56 21.4 +003.2 +003.0 000.9 23.4 +004.1 -000.6 1.
1200N 1150E 57216.69 21.4 +003.7 +004.1 000.9 23.4 +010.8 -000.8 1.
1200N 1160E 57039.26 21.4 +001.6 +004.0 000.9 23.4 +001.5 +002.0 1.
1200N 1170E 57275.50 21.4 +003.3 +003.5 000.9 23.4 +001.5 +003.8 1.
1200N 1180E 57790.18 21.4 +004.7 +005.8 001.0 23.4 +003.4 +004.6 1.
1200N 1190E 57820.38 21.4 +004.2 +004.7 000.9 23.4 +004.7 +001.5 1.
1200N 1200E 57775.36 21.4 +008.3 +004.3 000.9 23.4 +005.2 +002.9 1.
1200N 1210E 57810.34 21.4 +006.7 +003.0 000.9 23.4 +003.3 +001.9 1.
1200N 1220E 57810.71 21.4 +010.5 +002.1 000.9 23.4 -000.1 +000.6 1.
1200N 1230E 57857.57 21.4 +012.5 -000.7 000.6 23.4 -000.1 -000.6 1.
1200N 1240E 57981.96 21.4 +011.0 +004.3 000.9 23.4 +001.8 +000.1 1.
1200N 1250E 57934.50 21.4 +012.5 +001.5 000.9 23.4 +011.6 -005.1 0.
1200N 1260E 58382.60 21.4 +012.3 +002.0 001.0 23.4 +003.8 +000.5 1.
1200N 1270E 58435.44 21.4 +014.0 +001.3 001.0 23.4 +006.3 -001.2 1.
1200N 1280E 58579.43 21.4 +014.7 +003.2 000.9 23.4 +006.9 -000.2 1.
1200N 1290E 58547.39 21.4 +030.6 +004.6 000.5 23.4 +009.8 -001.9 0.
1200N 1300E 58131.32 21.4 +013.2 +002.3 000.9 23.4 +006.7 +000.0 1.
1200N 1310E 57378.68 21.4 +014.1 +002.8 000.7 23.4 +006.8 -001.5 1.
1200N 1320E 57231.94 21.4 +013.3 +002.3 000.9 23.4 +004.5 -002.7 1.

```

====>

F2=ADDLN F3=SAVE F4=FILE ALT-{ B=BLOCK L=BLINE K=BCOPY M=BMOVE G=BDEL D=DEL }

c:broad.xyz line=161 column=7 size=523 memory=403K

```

1200N 1320E 57231.94 21.4 +013.3 +002.3 000.9 23.4 +004.5 -002.7 1.
1200N 1330E 57240.83 21.4 +012.8 +001.2 001.0 23.4 +003.0 -003.9 1.
1200N 1340E 57140.45 21.4 +014.1 +000.1 000.9 23.4 +000.2 -004.0 1.
1200N 1350E 57234.32 21.4 +011.5 +001.4 001.0 23.4 -003.9 -002.6 1.
1100N 1350E 57213.76 21.4 -015.7 -001.9 001.0 23.4 -000.7 +002.4 1.
1100N 1340E 57386.62 21.4 -012.0 -000.4 000.9 23.4 +000.2 +001.3 1.
1100N 1330E 57450.37 21.4 -011.3 -006.3 000.6 23.4 +002.9 +002.5 1.
1100N 1320E 57517.67 21.4 -014.2 -004.1 000.3 23.4 +002.5 +003.0 0.
1100N 1310E 57533.89 21.4 -010.1 +001.1 000.1 23.4 -001.7 +009.0 0.
1100N 1300E 57504.15 21.4 -005.4 +001.7 000.1 23.4 -009.4 +005.7 0.
1100N 1290E 58037.85 21.4 -004.2 +016.8 000.1 23.4 -023.1 +014.4 0.
1100N 1280E 58412.55 21.4 -008.9 -012.6 000.0 23.4 -024.9 +019.9 0.
1100N 1270E 57876.79 21.4 -023.9 +016.8 000.0 23.4 -036.8 +028.8 0.
1100N 1260E 57191.42 21.4 -019.7 +097.8 000.0 23.4 -004.4 -000.1 -0.
1100N 1250E 57126.27 21.4 -023.4 +086.4 000.0 23.4 -033.2 +039.2 -0.
1100N 1240E 57225.12 21.4 -182.2 +171.8 000.1 23.4 -200.8 +200.0 -0.
1100N 1230E 57221.26 21.4 -200.0 +200.0 000.0 23.4 -100.0 +099.9 -0.
1100N 1220E 57220.88 21.4 -100.7 +105.4 000.3 23.4 -200.0 +200.0 -0.
1100N 1210E 57657.79 21.4 -200.0 +200.0 000.0 23.4 -096.9 +093.4 -0.
1100N 1200E 57687.66 21.4 -099.1 +096.5 000.3 23.4 -185.5 +179.6 -0.
1100N 1190E 57888.77 21.4 -182.2 +171.8 000.0 23.4 -096.7 +092.7 -0.

```

====>

F2=ADDLN F3=SAVE F4=FILE ALT-{ B=BLOCK L=BLINE K=BCOPY M=BMOVE G=BDEL D=DEL }

c:broad.xyz line=181 column=7 size=523 memory=403K

```

1100N 1190E 57888.77 21.4 -182.2 +171.8 000.0 23.4 -096.7 +092.7 -0.
1100N 1180E 58025.28 21.4 -099.1 +096.6 000.3 23.4 -171.7 +163.9 -0.
1100N 1170E 58130.02 21.4 -174.4 +164.1 000.0 23.4 -096.1 +093.0 -0.

```

1100N	1180E	58025.28	21.4	-099.1	+096.6	000.3	23.4-	-171.7	+163.9	-0.
1100N	1170E	58138.02	21.4	-174.4	+164.1	000.0	23.4-	-096.1	+093.0	-0.
1100N	1160E	58153.83	21.4	-098.8	+094.7	000.3	23.4-	-140.5	+136.2	-0.
1100N	1150E	58151.12	21.4	-133.9	+134.5	000.1	23.4-	-097.7	+096.2	-0.
1100N	1140E	57976.43	21.4	-098.9	+093.7	000.4	23.4-	-112.7	+109.0	-0.
1100N	1130E	57814.69	21.4	-133.8	+127.9	000.1	23.4-	-094.2	+089.3	-0.
1100N	1120E	57856.27	21.4	-098.6	+094.7	000.4	23.4-	-127.8	+125.3	-0.
1100N	1110E	57773.65	21.4	-128.9	+124.4	000.1	23.4-	-097.8	+095.8	-0.
1100N	1100E	57844.37	21.4	-099.7	+094.1	000.3	23.4-	-106.5	+107.2	-0.
1100N	1090E	57994.87	21.4	-117.4	+112.8	000.1	23.4-	-099.9	+097.3	-0.
1100N	1080E	57690.59	21.4	-098.7	+098.8	000.3	23.4-	-112.0	+108.6	-0.
1100N	1070E	58036.33	21.4	-113.3	+109.0	000.1	23.4-	-097.4	+094.7	-0.
1100N	1060E	57937.67	21.4	-097.2	+093.6	000.4	23.4-	-108.6	+105.7	-0.
1100N	1050E	57851.24	21.4	-099.7	+100.8	000.1	23.4-	-094.2	+093.0	-0.
1100N	1040E	57818.98	21.4	-097.3	+093.3	000.3	23.4-	-112.1	+109.4	-0.
1100N	1030E	57748.90	21.4	-105.1	+100.4	000.1	23.4-	-097.4	+093.9	-0.
1100N	1020E	57831.11	21.4	-096.7	+094.4	000.3	23.4-	-100.7	+096.3	-0.
1100N	1010E	57790.57	21.4	-112.8	+109.9	000.1	23.4-	-097.4	+096.2	-0.
1100N	1000E	57756.97	21.4	-096.4	+094.1	000.4	23.4-	-107.5	+106.5	-0.
1100N	0990E	57758.63	21.4	-109.8	+106.0	000.1	23.4-	-093.1	+086.3	-0.

====>

F2=ADDLN F3=SAVE F4=FILE ALT-| B=BLOCK L=BLINE K=BCOPY M=BMOVE G=BDEL D=DEL }

c:broad.xyz line=201 column=7 size=523 memory=403K

1100N	0990E	57758.63	21.4	-109.8	+106.0	000.1	23.4-	-093.1	+086.3	-0.
1100N	0980E	57794.82	21.4	-098.5	+095.3	000.4	23.4-	-113.6	+110.5	-0.
1100N	0970E	57797.12	21.4	-118.1	+114.0	000.1	23.4-	-099.8	+098.8	-0.
1100N	0960E	57767.20	21.4	-097.4	+093.5	000.4	23.4-	-095.6	+093.8	-0.
1100N	0950E	57731.53	21.4	-104.1	+104.7	000.1	23.4-	-097.1	+093.8	-0.
1100N	0940E	57689.59	21.4	-094.1	+090.2	000.3	23.4-	-111.3	+106.8	-0.
1100N	0930E	57605.77	21.4	-115.0	+108.8	000.1	23.4-	-096.4	+092.2	-0.
1100N	0920E	57518.15	21.4	-096.8	+091.6	000.4	23.4-	-095.5	+093.2	-0.
1100N	0910E	57517.98	21.4	-110.5	+108.2	000.1	23.4-	-096.8	+090.4	-0.
1100N	0900E	57532.57	21.4	-094.7	+091.0	000.3	23.4-	-101.7	+097.1	-0.
1100N	0890E	57533.97	21.4	-112.8	+111.8	000.1	23.4-	-094.5	+088.4	-0.
1100N	0880E	57508.14	21.4	-099.4	+097.3	000.4	23.4-	-108.7	+104.5	-0.
1100N	0870E	57522.92	21.4	-103.6	+100.5	000.1	23.4-	-096.7	+094.4	-0.
1100N	0860E	57538.06	21.4	-097.3	+094.0	000.4	23.4-	-110.3	+107.0	-0.
1100N	0850E	57521.60	21.4	-114.1	+110.5	000.1	23.4-	-096.6	+093.2	-0.
1100N	0840E	57536.82	21.4	-099.7	+094.9	000.4	23.4-	-102.9	+100.2	-0.
1100N	0830E	57559.45	21.4	-118.6	+115.9	000.1	23.4-	-094.2	+090.0	-0.
1100N	0820E	57537.69	21.4	-103.7	+098.3	000.4	23.4-	-115.8	+117.2	-0.
1100N	0810E	57536.59	21.4	-100.4	+099.1	000.4	23.4-	-107.9	+103.0	-0.
1100N	0800E	57606.91	21.4	-112.1	+111.9	000.1	23.4-	-099.5	+093.9	-0.
1100N	0790E	57612.57	21.4	-098.2	+094.9	000.4	23.4-	-090.3	+086.8	-0.

====>

F2=ADDLN F3=SAVE F4=FILE ALT-| B=BLOCK L=BLINE K=BCOPY M=BMOVE G=BDEL D=DEL }

c:broad.xyz line=221 column=7 size=523 memory=403K

1100N	0790E	57612.57	21.4	-098.2	+094.9	000.4	23.4-	-090.3	+086.8	-0.
1100N	0780E	57605.17	21.4	-110.6	+107.5	000.1	23.4-	-097.9	+095.3	-0.
1100N	0770E	57608.00	21.4	-098.5	+094.4	000.3	23.4-	-114.8	+112.0	-0.
1100N	0760E	57585.76	21.4	-121.8	+118.5	000.1	23.4-	-097.2	+092.7	-0.
1100N	0750E	57573.44	21.4	-100.3	+099.4	000.4	23.4-	-116.6	+113.7	-0.
1000N	0750E	57558.02	21.4	+103.9	-106.5	000.1	23.4-	+093.0	-089.6	-0.
1000N	0760E	57516.50	21.4	+100.8	-095.9	000.3	23.4-	+130.3	-126.2	-0.
1000N	0770E	57528.14	21.4	+135.2	-129.8	000.1	23.4-	+097.7	-096.3	-0.
1000N	0780E	57550.81	21.4	+098.6	-096.7	000.4	23.4-	+102.4	-099.3	-0.
1000N	0790E	57575.66	21.4	+129.4	-126.4	000.1	23.4-	+096.2	-095.4	-0.
1000N	0800E	57552.25	21.4	+100.2	-095.8	000.4	23.4-	+128.1	-124.4	-0.
1000N	0810E	56545.95	21.4	+200.0	-200.0	000.0	23.4-	+200.0	-200.0	-0.
1000N	0820E	56538.57	21.4	-200.0	+200.0	000.0	23.4-	+200.0	-200.0	-0.
1000N	0830E	56503.31	21.4	-200.0	+200.0	000.0	23.4-	+200.0	-200.0	-0.
1000N	0840E	56515.22	21.4	-200.0	-200.0	000.0	23.4-	+200.0	-200.0	-0.


```

1000N 0810E 56545.95 21.4 +200.0 -200.0 000.0 23.4- +200.0 -200.0 -0.
1000N 0820E 56538.57 21.4 -200.0 +200.0 000.0 23.4- +200.0 -200.0 -0.
1000N 0830E 56503.31 21.4 -200.0 +200.0 000.0 23.4- +200.0 -200.0 -0.
1000N 0840E 56515.22 21.4 -200.0 -200.0 000.0 23.4- +200.0 -200.0 -0.
1000N 0850E 56536.67 21.4 -200.0 +200.0 000.0 23.4- +200.0 -200.0 -0.
1000N 0860E 56521.59 21.4 +200.0 -200.0 000.0 23.4- +200.0 -200.0 -0.
1000N 0870E 56552.19 21.4 +200.0 -200.0 000.0 23.4- +200.0 -200.0 -0.
1000N 0880E 56579.64 21.4 +200.0 -200.0 000.0 23.4- +200.0 -200.0 -0.
1000N 0890E 56602.41 21.4 +200.0 +000.1 000.0 23.4- +200.0 -200.0 -0.
1000N 0900E 56604.13 21.4 +200.0 -200.0 000.0 23.4- -200.0 -200.0 -0.

```

```

====>
F2=ADDLN F3=SAVE F4=FILE ALT-{ B=BLOCK L=BLINE K=BCOPY M=BMOVE G=BDEL D=DEL }

```

```

c:broad.xyz line=241 column=7 size=523 memory=403K
1000N 0900E 56604.13 21.4 +200.0 -200.0 000.0 23.4- -200.0 -200.0 -0.
1000N 0910E 56546.22 21.4 +200.0 -200.0 000.0 23.4- +200.0 -200.0 -0.
1000N 0920E 56511.78 21.4 +200.0 -200.0 000.0 23.4- +200.0 -200.0 -0.
1000N 0930E 56446.49 21.4 -200.0 +200.0 000.0 23.4- +200.0 -200.0 -0.
1000N 0940E 56470.22 21.4 +200.0 -200.0 000.0 23.4 +200.0 +000.1 0.
1000N 0950E 56462.47 21.4 +200.0 +000.1 000.0 23.4- +200.0 -200.0 -0.
1000N 0960E 56496.96 21.4 +200.0 +000.1 000.0 23.4- +200.0 -200.0 -0.
1000N 0970E 56473.77 21.4 +200.0 -200.0 000.0 23.4 +200.0 +000.1 0.
1000N 0980E 56501.43 21.4 +200.0 -200.0 000.0 23.4- +200.0 -200.0 -0.
1000N 0990E 56581.46 21.4 -200.0 +200.0 000.0 23.4 -200.0 +200.0 0.
1000N 1000E 56623.60 21.4 +200.0 -200.0 000.0 23.4 -200.0 +200.0 0.
1000N 1010E 56675.87 21.4 +200.0 -200.0 000.0 23.4- +200.0 -200.0 -0.
1000N 1020E 56761.55 21.4 +200.0 -200.0 000.0 23.4- +200.0 -200.0 -0.
1000N 1030E 56888.35 21.4 +200.0 -200.0 000.0 23.4- +200.0 -200.0 -0.
1000N 1040E 56964.20 21.4 +200.0 -200.0 000.0 23.4- +200.0 -200.0 -0.
1000N 1050E 57090.72 21.4 +200.0 -200.0 000.0 23.4- +200.0 -200.0 -0.
1000N 1060E 57325.61 21.4 -200.0 +200.0 000.0 23.4 +200.0 -200.0 0.
1000N 1070E 57417.10 21.4 -200.0 -200.0 000.0 23.4- +200.0 -200.0 -0.
1000N 1080E 57445.06 21.4 +200.0 -200.0 000.0 23.4- +200.0 -200.0 -0.
1000N 1090E 57217.80 21.4 -200.0 +200.0 000.0 23.4- +200.0 -200.0 -0.
1000N 1100E 57094.99 21.4 +200.0 +000.1 000.0 23.4- +200.0 -200.0 -0.

```

```

====>
F2=ADDLN F3=SAVE F4=FILE ALT-{ B=BLOCK L=BLINE K=BCOPY M=BMOVE G=BDEL D=DEL }

```

```

c:broad.xyz line=261 column=7 size=523 memory=403K
1000N 1100E 57094.99 21.4 +200.0 +000.1 000.0 23.4- +200.0 -200.0 -0.
1000N 1110E 57095.77 21.4 +200.0 -200.0 000.0 23.4- +200.0 -200.0 -0.
1000N 1120E 57024.93 21.4 +200.0 -200.0 000.0 23.4- +200.0 -200.0 -0.
1000N 1130E 56922.89 21.4 +200.0 -200.0 000.0 23.4- +200.0 -200.0 -0.
1000N 1140E 56901.45 21.4 +200.0 -200.0 000.0 23.4- +200.0 -200.0 -0.
1000N 1150E 56961.61 21.4 +200.0 -200.0 000.0 23.4- +200.0 -200.0 -0.
1000N 1160E 56972.49 21.4 +200.0 -200.0 000.0 23.4- +200.0 -200.0 -0.
1000N 1170E 56975.91 21.4 +200.0 -200.0 000.0 23.4- +200.0 -200.0 -0.
1000N 1180E 57025.20 21.4 -200.0 +200.0 000.0 23.4- +200.0 -200.0 -0.
1000N 1190E 57110.10 21.4 +200.0 -200.0 000.0 23.4- +200.0 -200.0 -0.
1000N 1200E 57214.26 21.4 -200.0 +200.0 000.0 23.4- +200.0 -200.0 -0.
1000N 1210E 57252.92 21.4 +200.0 -200.0 000.0 23.4- +200.0 -200.0 -0.
1000N 1220E 57324.70 21.4 +200.0 -200.0 000.0 23.4 +200.0 +000.1 0.
1000N 1230E 57392.58 21.4 +200.0 -200.0 000.0 23.4- +200.0 -200.0 -0.
1000N 1240E 57828.47 21.4 +200.0 -200.0 000.0 23.4- +200.0 -200.0 -0.
1000N 1250E 58068.91 21.4 +200.0 -200.0 000.0 23.4- +200.0 -200.0 -0.
1000N 1260E 58097.92 21.4 +200.0 -200.0 000.0 23.4- +200.0 -200.0 -0.
1000N 1270E 58410.52 21.4 -200.0 -200.0 000.0 23.4- +200.0 -200.0 -0.
1000N 1280E 58594.27 21.4 +200.0 -200.0 000.0 23.4- +200.0 -200.0 -0.
1000N 1290E 58550.12 21.4 +200.0 -200.0 000.0 23.4- +200.0 -200.0 -0.
1000N 1300E 57871.98 21.4 +200.0 -200.0 000.0 23.4- +200.0 -200.0 -0.

```

```

====>
F2=ADDLN F3=SAVE F4=FILE ALT-{ B=BLOCK L=BLINE K=BCOPY M=BMOVE G=BDEL D=DEL }

```

```

c:broad.xyz line=281 column=7 size=523 memory=403K

```


c:broad.xyz line=281 column=7 size=523 memory=403K

1000N	1300E	57871.98	21.4	+200.0	-200.0	000.0	23.4-	+200.0	-200.0	-0.
1000N	1310E	57586.83	21.4	+200.0	-200.0	000.0	23.4-	+200.0	-200.0	-0.
1000N	1320E	57199.84	21.4	+200.0	-200.0	000.0	23.4-	+200.0	-200.0	-0.
1000N	1330E	57605.36	21.4	+200.0	-200.0	000.0	23.4-	+200.0	-200.0	-0.
1000N	1340E	57791.68	21.4	+200.0	-200.0	000.0	23.4-	+200.0	-200.0	-0.
1000N	1350E	57509.10	21.4	+200.0	-200.0	000.0	23.4-	+200.0	-200.0	-0.
0900N	1350E	58887.58	21.4	-200.0	+200.0	000.0	23.4-	-200.0	+200.0	-0.
0900N	1340E	58904.21	21.4	-200.0	+200.0	000.0	23.4-	-200.0	+200.0	-0.
0900N	1330E	58653.87	21.4	-200.0	+200.0	000.0	23.4-	-200.0	+200.0	-0.
0900N	1320E	57581.24	21.4	-200.0	+200.0	000.0	23.4-	-200.0	+200.0	-0.
0900N	1310E	57489.92	21.4	-200.0	+200.0	000.0	23.4-	-200.0	+200.0	-0.
0900N	1300E	57411.05	21.4	-200.0	+200.0	000.0	23.4-	-200.0	+200.0	-0.
0900N	1290E	57346.64	21.4	-200.0	+200.0	000.0	23.4-	-200.0	+200.0	-0.
0900N	1280E	57347.44	21.4	-200.0	+200.0	000.0	23.4-	-200.0	+200.0	-0.
0900N	1270E	57311.40	21.4	-200.0	+200.0	000.0	23.4-	-200.0	+200.0	-0.
0900N	1260E	57306.79	21.4	-200.0	+200.0	000.0	23.4-	-200.0	+200.0	-0.
0900N	1250E	57265.36	21.4	+030.6	-000.1	000.0	23.4-	-200.0	+200.0	-0.
0900N	1240E	57266.47	21.4	-200.0	+200.0	000.0	23.4-	-200.0	+200.0	-0.
0900N	1230E	57363.33	21.4	-200.0	-000.1	000.0	23.4-	-200.0	+200.0	-0.
0900N	1220E	57315.13	21.4	-200.0	+200.0	000.0	23.4-	-200.0	+200.0	-0.
0900N	1210E	57303.78	21.4	-200.0	+200.0	000.0	23.4-	-200.0	+200.0	-0.

====>

F2=ADDLN F3=SAVE F4=FILE ALT-(B=BLOCK L=BLINE K=BCOPY M=BMOVE G=BDEL D=DEL)

c:broad.xyz line=301 column=7 size=523 memory=403K

0900N	1210E	57303.78	21.4	-200.0	+200.0	000.0	23.4-	-200.0	+200.0	-0.
0900N	1200E	57255.21	21.4	-200.0	+200.0	000.0	23.4-	-200.0	+200.0	-0.
0900N	1190E	57194.18	21.4	-200.0	+200.0	000.0	23.4-	-200.0	+200.0	-0.
0900N	1180E	57316.41	21.4	-200.0	+200.0	000.0	23.4	+200.0	-200.0	0.
0900N	1170E	57494.05	21.4	-200.0	+200.0	000.0	23.4-	-200.0	+200.0	-0.
0900N	1160E	57581.20	21.4	-200.0	+200.0	000.0	23.4-	-200.0	+200.0	-0.
0900N	1150E	57597.56	21.4	-200.0	+200.0	000.0	23.4-	-200.0	+200.0	-0.
0900N	1140E	57374.17	21.4	-200.0	+200.0	000.0	23.4-	-200.0	+200.0	-0.
0900N	1130E	57085.47	21.4	-200.0	+200.0	000.0	23.4-	-200.0	+200.0	-0.
0900N	1120E	56965.28	21.4	-200.0	+200.0	000.0	23.4-	-200.0	+200.0	-0.
0900N	1110E	56979.44	21.4	-200.0	+200.0	000.0	23.4-	-200.0	+200.0	-0.
0900N	1100E	57037.26	21.4	-200.0	+200.0	000.0	23.4-	-200.0	+200.0	-0.
0900N	1090E	56945.94	21.4	-200.0	+200.0	000.0	23.4-	-200.0	+200.0	-0.
0900N	1080E	56920.57	21.4	-200.0	+200.0	000.0	23.4-	-200.0	+200.0	-0.
0900N	1070E	56682.30	21.4	-200.0	+200.0	000.0	23.4-	-200.0	+200.0	-0.
0900N	1060E	56596.10	21.4	-200.0	+200.0	000.0	23.4-	-200.0	+200.0	-0.
0900N	1050E	56475.78	21.4	-200.0	-000.1	000.0	23.4-	-200.0	+200.0	-0.
0900N	1040E	56551.16	21.4	-200.0	+200.0	000.0	23.4-	-200.0	+200.0	-0.
0900N	1030E	56579.21	21.4	-200.0	+200.0	000.0	23.4-	-200.0	+200.0	-0.
0900N	1020E	56475.79	21.4	-200.0	+200.0	000.0	23.4-	-200.0	+200.0	-0.
0900N	1010E	56476.32	21.4	-200.0	+200.0	000.0	23.4-	-200.0	+200.0	-0.

====>

F2=ADDLN F3=SAVE F4=FILE ALT-(B=BLOCK L=BLINE K=BCOPY M=BMOVE G=BDEL D=DEL)

c:broad.xyz line=321 column=7 size=523 memory=403K

0900N	1010E	56476.32	21.4	-200.0	+200.0	000.0	23.4-	-200.0	+200.0	-0.
0900N	1000E	56431.20	21.4	-200.0	+200.0	000.0	23.4-	-200.0	+200.0	-0.
0900N	0990E	56444.43	21.4	-200.0	+200.0	000.0	23.4-	-200.0	+200.0	-0.
0900N	0980E	56429.00	21.4	-200.0	+200.0	000.0	23.4	+200.0	-200.0	0.
0900N	0970E	56491.27	21.4	-200.0	+200.0	000.0	23.4-	-200.0	+200.0	-0.
0900N	0960E	56515.18	21.4	-200.0	+200.0	000.0	23.4-	-200.0	+200.0	-0.
0900N	0950E	56557.65	21.4	-200.0	+200.0	000.0	23.4-	-200.0	+200.0	-0.
0900N	0940E	56543.22	21.4	+200.0	-200.0	000.0	23.4-	-200.0	+200.0	-0.
0900N	0930E	56591.59	21.4	-200.0	+200.0	000.0	23.4-	-200.0	+200.0	-0.
0900N	0920E	56630.52	21.4	-200.0	+200.0	000.0	23.4-	-200.0	+200.0	-0.
0900N	0910E	56561.16	21.4	-200.0	+200.0	000.0	23.4-	-200.0	+200.0	-0.

0900N	0920E	56630.52	21.4	-200.0	+200.0	000.0	23.4	-200.0	+200.0	-0.
0900N	0910E	56561.18	21.4	-200.0	+200.0	000.0	23.4	-200.0	+200.0	-0.
0900N	0900E	56523.06	21.4	-200.0	+200.0	000.0	23.4	-200.0	+200.0	-0.
0900N	0890E	56540.82	21.4	-200.0	+200.0	000.0	23.4	-200.0	+200.0	-0.
0900N	0880E	56567.67	21.4	-200.0	+200.0	000.0	23.4	-200.0	+200.0	-0.
0900N	0870E	56547.07	21.4	-200.0	+200.0	000.0	23.4	-200.0	+200.0	-0.
0900N	0860E	56545.45	21.4	-200.0	+200.0	000.0	23.4	+200.0	+200.0	-0.
0900N	0850E	56555.65	21.4	-200.0	+200.0	000.0	23.4	-200.0	+200.0	-0.
0900N	0840E	56535.61	21.4	-200.0	+200.0	000.0	23.4	-200.0	+200.0	-0.
0900N	0830E	56568.98	21.4	-200.0	+200.0	000.0	23.4	-200.0	+200.0	-0.
0900N	0820E	56583.18	21.4	-200.0	+200.0	000.0	23.4	-200.0	+200.0	-0.
0900N	0810E	56588.72	21.4	+200.0	-200.0	000.0	23.4	-200.0	+200.0	-0.

====>
F2=ADDLN F3=SAVE F4=FILE ALT-(B=BLOCK L=BLINE K=BCOPY M=BMOVE G=BDEL D=DEL)

c:broad.xyz										
line=341										
column=7										
size=523										
memory=403K										
0900N	0810E	56588.72	21.4	+200.0	-200.0	000.0	23.4	-200.0	+200.0	-0.
0900N	0800E	56611.86	21.4	-200.0	+200.0	000.0	23.4	-200.0	+200.0	-0.
0900N	0790E	56561.18	21.4	-200.0	+200.0	000.0	23.4	-200.0	+200.0	-0.
1500N	1000E	57493.34	21.4	-002.1	+006.4	000.5	23.4	-005.9	-006.9	1.
1500N	0990E	57641.30	21.4	+048.8	-007.2	000.2	23.4	-007.6	-007.3	1.
1500N	0980E	57824.05	21.4	+041.4	-006.2	000.2	23.4	-011.0	-006.5	1.
1500N	0970E	57918.83	21.4	+050.0	-010.6	000.3	23.4	-010.6	-006.3	1.
1500N	0960E	57966.80	21.4	+034.6	-001.6	000.3	23.4	-013.6	-005.2	1.
1500N	0950E	57691.28	21.4	+046.8	-014.2	000.3	23.4	-015.0	-005.0	1.
1500N	0940E	57582.81	21.4	+017.8	-013.5	000.5	23.4	-013.8	-003.8	1.
1500N	0930E	57560.91	21.4	+023.0	-005.4	000.4	23.4	-014.2	-001.7	1.
1500N	0920E	57538.13	21.4	+023.4	-022.0	000.3	23.4	-013.9	-000.3	1.
1500N	0910E	57438.40	21.4	+019.8	-008.7	000.4	23.4	-013.1	+000.4	1.
1500N	0900E	57434.62	21.4	+007.4	-007.6	000.5	23.4	-015.3	-000.2	1.
1500N	0890E	57486.92	21.4	+014.2	-005.7	000.4	23.4	-016.1	-000.6	1.
1500N	0880E	57531.23	21.4	+033.6	-011.5	000.3	23.4	-018.1	+000.4	1.
1500N	0870E	57534.39	21.4	+029.5	-007.5	000.3	23.4	-014.7	+000.9	1.
1500N	0860E	57448.38	21.4	+043.8	-003.3	000.2	23.4	-015.9	+001.3	1.
1500N	0850E	57350.11	21.4	+024.4	-007.0	000.3	23.4	-011.5	+000.4	1.
1500N	0840E	57285.80	21.4	+021.4	-008.2	000.4	23.4	-013.4	+000.9	1.
1500N	0830E	57289.72	21.4	+044.1	-011.9	000.2	23.4	-014.0	-000.2	1.

====>
F2=ADDLN F3=SAVE F4=FILE ALT-(B=BLOCK L=BLINE K=BCOPY M=BMOVE G=BDEL D=DEL)

c:broad.xyz										
line=361										
column=7										
size=523										
memory=403K										
1500N	0830E	57289.72	21.4	+044.1	-011.9	000.2	23.4	-014.0	-000.2	1.
1500N	0820E	57242.93	21.4	+027.5	-024.1	000.3	23.4	-016.7	+000.7	1.
1500N	0810E	57265.18	21.4	+018.9	-015.5	000.4	23.4	-011.9	+000.7	1.
1500N	0800E	57300.43	21.4	+029.3	-012.1	000.3	23.4	-015.1	+000.9	1.
1500N	0790E	57313.52	21.4	+000.7	-009.1	000.7	23.4	-012.1	-001.0	1.
1500N	0780E	57350.92	21.4	-002.1	-009.5	000.7	23.4	-009.5	-001.8	1.
1500N	0770E	57351.79	21.4	-005.7	-010.1	000.7	23.4	-016.5	+001.4	1.
1500N	0760E	57341.26	21.4	-002.1	-006.7	000.6	23.4	-007.6	-001.2	1.
1500N	0750E	57325.66	21.4	-000.9	-003.6	000.6	23.4	-006.2	-002.9	1.
1500N	0740E	57275.49	21.4	-001.5	-008.6	000.6	23.4	-005.6	-002.3	1.
1500N	0730E	57217.73	21.4	+001.2	-006.4	000.6	23.4	-005.7	-001.9	1.
1500N	0720E	57130.40	21.4	+000.0	-003.0	000.6	23.4	-004.2	-004.7	1.
1500N	0710E	57007.92	21.4	+002.4	-003.2	000.6	23.4	-002.9	-004.3	1.
1500N	0700E	56858.82	21.4	-004.6	-006.9	000.5	23.4	-003.0	-004.9	1.
1500N	0690E	56827.40	21.4	-004.4	-005.9	000.5	23.4	-001.1	-005.2	1.
1500N	0680E	56918.63	21.4	-005.0	-004.6	000.6	23.4	+001.2	-005.8	1.
1500N	0670E	57224.93	21.4	-003.4	-002.6	000.5	23.4	+005.1	-006.8	1.
1500N	0660E	57285.25	21.4	-011.6	+000.1	000.5	23.4	+002.9	-005.1	1.
1500N	0650E	57380.62	21.4	-010.7	-003.1	000.6	23.4	+004.9	-007.2	1.
1500N	0640E	57325.81	21.4	-004.5	-004.9	000.6	23.4	+006.5	-004.1	1.
1500N	0630E	57353.32	21.4	-005.2	-001.9	000.6	23.4	+008.6	-003.6	1.

====>

====>

F2=ADDLN F3=SAVE F4=FILE ALT-(B=BLOCK L=BLINE K=BCOPY M=BMOVE G=BDEL D=DEL)

c:broad.xyz	line=381	column=7	size=523	memory=403K
1500N	0630E	57353.32	21.4 -005.2 -001.9	000.6 23.4 +008.3 -003.4
1500N	0620E	57266.77	21.4 -007.7 -007.0	000.5 23.4 +008.3 -003.4
1500N	0610E	57048.10	21.4 +001.6 -005.8	000.5 23.4 +004.4 -001.5
1500N	0600E	56847.94	21.4 +001.0 -003.1	000.5 23.4 +011.0 +000.0
1500N	0590E	56844.21	21.4 +007.5 -004.8	000.5 23.4 +012.6 +004.2
1500N	0580E	57030.01	21.4 +004.1 +003.0	000.5 23.4 +008.6 -000.2
1500N	0570E	57144.30	21.4 +003.3 -007.1	000.5 23.4 +006.3 +000.9
1500N	0560E	57027.38	21.4 +003.8 -005.9	000.5 23.4 +004.5 -002.0
1500N	0550E	57025.54	21.4 +009.2 -006.5	000.4 23.4 -001.7 -000.5
1500N	0540E	56994.52	21.4 +008.6 -006.4	000.5 23.4 +000.0 +000.0
1500N	0530E	57058.78	21.4 +007.3 -005.6	000.5 23.4 -005.7 +004.6
1500N	0520E	57189.49	21.4 +009.7 -014.5	000.5 23.4 -002.9 -000.3
1500N	0510E	57150.71	21.4 +008.0 -010.2	000.5 23.4 -006.6 -000.6
1500N	0500E	57152.81	21.4 +005.1 -011.9	000.4 23.4 -009.9 -000.9
1500N	0490E	57083.11	21.4 +004.7 -010.4	000.5 23.4 -008.0 -000.7
1500N	0480E	57068.45	21.4 +006.1 -012.0	000.5 23.4 -007.0 +000.7
1500N	0470E	57084.13	21.4 +003.6 -013.3	000.6 23.4 -004.3 +002.7
1500N	0460E	57135.95	21.4 +004.3 -015.8	000.6 23.4 -002.7 -000.2
1500N	0450E	57203.40	21.4 +000.9 -012.6	000.6 23.4 -005.9 +004.6
1500N	0440E	57197.95	21.4 +002.8 -013.7	000.5 23.4 -006.0 +004.6
1500N	0430E	57226.91	21.4 -005.1 -014.0	000.5 23.4 -010.7 +004.1

====>

F2=ADDLN F3=SAVE F4=FILE ALT-(B=BLOCK L=BLINE K=BCOPY M=BMOVE G=BDEL D=DEL)

c:broad.xyz	line=401	column=7	size=523	memory=403K
1500N	0430E	57226.91	21.4 -005.1 -014.0	000.5 23.4 -010.7 +004.1
1500N	0420E	57207.84	21.4 -006.5 -013.3	000.6 23.4 -009.2 +002.3
1500N	0410E	57214.30	21.4 -016.2 -012.6	000.5 23.4 -010.8 +003.9
1500N	0400E	57197.51	21.4 -013.8 -005.4	000.5 23.4 -010.0 +005.8
1500N	0390E	57182.86	21.4 -015.9 +009.0	000.4 23.4 -012.1 +001.8
1500N	0380E	57191.82	21.4 -017.7 -012.5	000.5 23.4 -010.4 +000.7
1500N	0370E	57216.66	21.4 -010.3 -001.1	000.5 23.4 -005.2 +001.3
1500N	0360E	57262.30	21.4 -012.5 -001.2	000.5 23.4 -013.5 +003.6
1500N	0350E	57319.59	21.4 -010.9 +000.4	000.5 23.4 -008.7 +005.1
1500N	0340E	57394.82	21.4 -011.6 +003.0	000.5 23.4 -011.7 +004.0
1500N	0330E	57440.12	21.4 -015.4 -000.2	000.5 23.4 -008.8 +000.7
1500N	0320E	57530.03	21.4 -006.8 +001.1	000.5 23.4 -011.5 +005.1
1500N	0310E	57571.59	21.4 -004.7 -000.4	000.5 23.4 -010.4 +003.1
1500N	0300E	57554.26	21.4 -008.2 +001.6	000.5 23.4 -009.7 +003.7
1500N	0290E	57529.56	21.4 -007.5 +000.3	000.4 23.4 -006.2 +004.7
1500N	0280E	57452.38	21.4 -006.5 +006.1	000.4 23.4 -007.3 +002.2
1500N	0270E	57382.61	21.4 -010.2 +001.1	000.5 23.4 -007.0 +006.8
1500N	0260E	57293.37	21.4 -013.7 +000.7	000.5 23.4 -005.0 +003.3
1500N	0250E	57218.37	21.4 -006.3 +004.7	000.4 23.4 -006.5 +000.0
1500N	0240E	57168.90	21.4 -015.5 -000.7	000.5 23.4 -004.1 +001.6
1500N	0230E	57125.68	21.4 -009.1 -000.2	000.4 23.4 -003.4 +001.9

====>

F2=ADDLN F3=SAVE F4=FILE ALT-(B=BLOCK L=BLINE K=BCOPY M=BMOVE G=BDEL D=DEL)

c:broad.xyz	line=421	column=7	size=523	memory=403K
1500N	0230E	57125.68	21.4 -009.1 -000.2	000.4 23.4 -003.4 +001.9
1500N	0220E	57036.69	21.4 -005.2 +001.0	000.4 23.4 -004.8 +000.7
1500N	0210E	57010.85	21.4 -011.4 +003.3	000.5 23.4 -000.9 +001.0
1500N	0200E	56968.17	21.4 -008.6 +007.3	000.4 23.4 -003.4 +000.8
1400N	0200E	56845.46	21.4 +022.8 -001.0	000.4 23.4 +001.7 +004.8
1400N	0210E	56965.13	21.4 +039.2 -024.9	000.1 23.4 +014.9 -009.0
1400N	0220E	57012.20	21.4 -007.9 +000.4	000.4 23.4 +005.4 -011.1
1400N	0230E	57008.26	21.4 +033.1 -010.3	000.1 23.4 +010.2 -008.9
1400N	0240E	57161.64	21.4 -007.1 +003.2	000.4 23.4 +003.5 -008.9

```

1400N 0210E 57012.20 21.4 +007.9 +000.4 000.4 23.4 +005.4 -011.1 1.
1400N 0220E 57008.26 21.4 +033.1 -010.3 000.1 23.4 +010.2 -008.9 1.
1400N 0230E 57161.64 21.4 -007.1 +003.2 000.4 23.4 +003.5 -008.9 1.
1400N 0240E 57240.34 21.4 -004.6 -007.5 000.4 23.4 +003.8 -006.2 1.
1400N 0250E 57320.40 21.4 -004.4 -002.7 000.4 23.4 +002.9 -004.2 1.
1400N 0260E 57385.81 21.4 -004.8 -004.5 000.4 23.4 -000.6 -004.0 1.
1400N 0270E 57486.82 21.4 -014.6 -005.8 000.4 23.4 +000.1 -005.5 1.
1400N 0280E 57583.54 21.4 +000.6 -004.7 000.4 23.4 -000.8 -004.2 1.
1400N 0290E 57639.28 21.4 -003.6 -005.0 000.4 23.4 -002.8 +000.1 1.
1400N 0300E 57714.73 21.4 +004.2 -001.5 000.3 23.4 -005.5 -001.1 1.
1400N 0310E 57772.86 21.4 +005.6 -006.5 000.4 23.4 -003.7 +004.2 1.
1400N 0320E 57796.71 21.4 +010.0 +004.2 000.4 23.4 -001.0 +002.4 0.
1400N 0330E 57797.14 21.4 -002.9 +000.5 000.3 23.4 -007.5 -002.3 1.
1400N 0340E 57740.04 21.4 +000.6 -008.0 000.3 23.4 +002.9 -003.1 0.
1400N 0350E 57593.84 21.4 -011.5 -008.3 000.3 23.4 -005.8 -000.6 1.

```

====>

F2=ADBLN F3=SAVE F4=FILE ALT-| B=BLOCK L=BLINE K=BCOPY M=BMOVE G=BDEL D=DEL }

c:broad.xyz line=441 column=7 size=523 memory=403K

```

1400N 0360E 57593.84 21.4 -011.5 -008.3 000.3 23.4 -005.8 -000.6 1.
1400N 0370E 57430.25 21.4 -004.0 -007.4 000.3 23.4 -004.2 -001.2 1.
1400N 0380E 57299.84 21.4 -001.5 -005.5 000.3 23.4 -005.3 -005.8 1.
1400N 0390E 57190.65 21.4 -001.4 -004.3 000.3 23.4 -007.5 -002.9 1.
1400N 0400E 57116.67 21.4 -006.1 -005.7 000.3 23.4 -000.6 -009.3 1.
1400N 0410E 57079.60 21.4 -009.3 -004.5 000.4 23.4 -003.2 -003.3 1.
1400N 0420E 57028.04 21.4 -006.1 -006.3 000.3 23.4 -005.9 -007.1 1.
1400N 0430E 56985.75 21.4 -006.4 -015.8 000.3 23.4 -003.3 -000.6 1.
1400N 0440E 56627.48 21.4 -011.0 -008.9 000.4 23.4 -005.7 -002.8 1.
1400N 0450E 56638.74 21.4 -007.8 -016.2 000.4 23.4 -001.4 -005.2 0.
1400N 0460E 56645.48 21.4 -000.1 -014.1 000.2 23.4 -003.3 -000.9 1.
1400N 0470E 56658.51 21.4 -005.6 -016.3 000.4 23.4 -007.9 -008.6 1.
1400N 0480E 56681.20 21.4 -018.7 -012.6 000.2 23.4 -008.1 -009.0 1.
1400N 0490E 56706.01 21.4 -010.0 -014.7 000.3 23.4 -001.4 -008.5 1.
1400N 0500E 56729.50 21.4 -007.9 -010.4 000.3 23.4 +003.8 -011.9 1.
1400N 0510E 56735.55 21.4 -000.5 -019.3 000.4 23.4 +005.5 -013.2 0.
1400N 0520E 56746.50 21.4 +020.8 -042.1 000.1 23.4 +005.6 -011.0 0.
1400N 0530E 56770.04 21.4 +003.0 -017.9 000.4 23.4 +012.5 -013.1 0.
1400N 0540E 56781.86 21.4 +016.0 -019.3 000.2 23.4 +005.9 -013.5 1.
1400N 0550E 56643.97 21.4 +001.9 -014.4 000.2 23.4 +017.9 +001.1 0.
1400N 0560E 56741.41 21.4 +012.2 +012.6 000.1 23.4 +010.4 -013.6 1.

```

====>

F2=ADBLN F3=SAVE F4=FILE ALT-| B=BLOCK L=BLINE K=BCOPY M=BMOVE G=BDEL D=DEL }

c:broad.xyz line=461 column=7 size=523 memory=403K

```

1400N 0560E 56741.41 21.4 +012.2 +012.6 000.1 23.4 +010.4 -013.6 1.
1400N 0570E 56774.41 21.4 +000.8 -006.4 000.1 23.4 +012.2 -009.4 1.
1400N 0580E 56679.53 21.4 +024.1 -016.9 000.2 23.4 +010.3 -012.4 1.
1400N 0590E 56633.41 21.4 +015.1 -029.7 000.2 23.4 +012.2 -012.0 1.
1400N 0600E 56583.25 21.4 +013.8 -023.8 000.2 23.4 +010.3 -012.0 1.
1400N 0610E 56955.24 21.4 +029.8 -017.3 000.2 23.4 +009.4 -005.7 1.
1400N 0620E 57006.01 21.4 +009.6 -019.8 000.3 23.4 +013.8 -009.3 1.
1400N 0630E 57084.03 21.4 -001.7 -007.9 000.1 23.4 +012.6 -013.4 1.
1400N 0640E 57122.42 21.4 +008.0 -019.3 000.4 23.4 +011.4 -009.7 1.
1400N 0650E 57198.27 21.4 +018.0 -022.4 000.2 23.4 +012.4 -011.0 1.
1400N 0660E 57202.41 21.4 +009.2 -021.7 000.3 23.4 +010.5 -012.5 1.
1400N 0670E 57103.19 21.4 +005.0 -015.6 000.3 23.4 +009.5 -010.8 1.
1400N 0680E 56983.21 21.4 +017.8 -020.3 000.2 23.4 +011.7 -009.4 1.
1400N 0690E 56880.93 21.4 +012.4 -012.0 000.3 23.4 +006.6 -014.1 1.
1400N 0700E 56861.66 21.4 +010.3 -012.4 000.3 23.4 -005.1 -014.2 1.
1400N 0710E 56829.19 21.4 +022.5 -004.4 000.1 23.4 +005.6 -009.0 1.
1400N 0720E 56804.22 21.4 +025.6 -046.0 000.1 23.4 +003.8 -010.6 1.
1400N 0730E 56788.03 21.4 +012.0 +004.2 000.2 23.4 -000.7 -009.6 1.
1400N 0740E 56821.08 21.4 +012.7 -058.9 000.1 23.4 +001.8 -009.7 1.
1400N 0750E 56797.68 21.4 +005.7 -010.1 000.3 23.4 -003.1 -006.0 1.

```

1400N	0740E	56821.08	21.4	+012.7	-058.9	000.1	23.4	+001.8	-009.7	1.
1400N	0750E	56797.68	21.4	+005.7	-010.1	000.3	23.4	-003.1	-006.0	1.
1400N	0760E	56805.92	21.4	+008.8	+003.2	000.2	23.4	+002.1	-005.4	1.

====>

F2=ADDLN F3=SAVE F4=FILE ALT-{ B=BLOCK L=BLINE K=BCOPY M=BMOVE G=BDEL D=DEL }

c:broad.xyz line=481 column=7 size=523 memory=403K

1400N	0760E	56805.92	21.4	+008.8	+003.2	000.2	23.4	+002.1	-005.4	1.
1400N	0770E	56852.60	21.4	+034.7	-016.5	000.1	23.4	+001.7	-005.7	1.
1400N	0780E	56881.24	21.4	+001.2	-030.9	000.1	23.4	-000.5	-007.1	1.
1400N	0790E	56964.96	21.4	+016.7	+010.5	000.3	23.4	-008.8	-008.2	1.
1400N	0800E	57046.41	21.4	+044.1	-003.9	000.1	23.4	-004.6	-004.2	1.
1400N	0810E	57068.63	21.4	+018.4	-016.8	000.2	23.4	-008.8	-006.5	1.
1400N	0820E	57090.76	21.4	+013.0	-003.8	000.2	23.4	-006.4	-000.8	1.
1400N	0830E	57091.06	21.4	+001.7	-002.1	000.4	23.4	-006.5	-002.5	1.
1400N	0840E	57123.64	21.4	+015.4	+005.0	000.2	23.4	+000.7	-005.2	1.
1400N	0850E	57139.25	21.4	+010.0	-003.9	000.3	23.4	-002.5	-001.4	1.
1400N	0860E	57190.13	21.4	+004.2	+000.0	000.3	23.4	-004.4	+001.7	1.
1400N	0870E	57308.99	21.4	+001.6	-019.4	000.1	23.4	-005.5	+000.0	0.
1400N	0880E	57496.62	21.4	+008.3	+002.3	000.2	23.4	-008.1	-005.7	0.
1400N	0890E	57588.12	21.4	+025.5	-001.3	000.1	23.4	-004.1	-007.5	0.
1400N	0900E	57788.11	21.4	+018.2	-004.1	000.2	23.4	-002.0	-004.5	0.
1400N	0910E	57603.31	21.4	+006.7	-001.2	000.4	23.4	+005.1	-009.8	0.
1400N	0920E	57210.12	21.4	+015.1	-006.7	000.2	23.4	-000.9	-007.7	0.
1400N	0930E	57084.15	21.4	+001.8	-006.8	000.5	23.4	+002.3	-007.0	0.
1400N	0940E	57128.38	21.4	+006.1	-009.9	000.4	23.4	+005.2	-007.7	0.
1400N	0950E	57119.04	21.4	+012.3	-001.5	000.2	23.4	+006.2	-009.5	0.
1400N	0960E	57080.44	21.4	+011.4	-013.7	000.2	23.4	-000.1	-005.4	0.

====>

F2=ADDLN F3=SAVE F4=FILE ALT-{ B=BLOCK L=BLINE K=BCOPY M=BMOVE G=BDEL D=DEL }

c:broad.xyz line=501 column=7 size=523 memory=403K

1400N	0960E	57080.44	21.4	+011.4	-013.7	000.2	23.4	-000.1	-005.4	0.
1400N	0970E	57206.73	21.4	+012.1	-004.5	000.1	23.4	+006.3	-012.5	0.
1400N	0980E	57085.67	21.4	+035.7	+022.1	000.1	23.4	+013.4	-008.8	0.
1400N	0990E	57055.77	21.4	+007.7	-002.3	000.3	23.4	+011.2	-010.9	0.
1400N	1000E	57028.82	21.4	+005.4	+003.4	000.3	23.4	+015.0	-011.4	0.
1400N	1010E	56952.73	21.4	+009.2	-014.0	000.2	23.4	+012.2	-008.3	0.
1400N	1020E	56877.68	21.4	+019.0	-005.2	000.3	23.4	+020.9	-005.1	0.
1400N	1030E	56833.27	21.4	-005.8	-013.1	000.1	23.4	+017.6	-006.1	0.
1400N	1040E	56734.91	21.4	+017.1	-014.4	000.1	23.4	+013.5	-008.7	0.
1400N	1050E	56664.81	21.4	+006.9	-001.0	000.3	23.4	+015.8	-005.1	0.
1400N	1060E	56590.01	21.4	-000.2	+000.2	000.4	23.4	+016.6	-009.6	0.
1400N	1070E	56612.96	21.4	-000.1	-004.0	000.4	23.4	+018.9	-007.5	0.
1400N	1080E	56618.74	21.4	-010.0	-002.5	000.5	23.4	+043.5	-011.2	0.
1400N	1090E	56645.03	21.4	-003.3	-017.6	000.2	23.4	+019.3	-003.9	0.
1400N	1100E	56625.17	21.4	+016.2	-001.7	000.4	23.4	+063.8	-004.2	0.
1400N	1110E	56502.38	21.4	-014.7	-017.1	000.3	23.4	+020.3	+006.2	0.
1400N	1120E	56518.93	21.4	-012.2	-004.1	000.5	23.4	+034.9	-003.2	0.
1400N	1130E	56391.83	21.4	+001.6	-021.4	000.2	23.4	+022.5	-003.4	0.
1400N	1140E	56336.10	21.4	-004.3	+002.8	000.4	23.4	+021.1	+000.2	0.
1400N	1150E	56199.34	21.4	-002.3	-005.7	000.4	23.4	+023.0	-005.1	0.
1400N	1160E	56316.01	21.4	-006.4	-011.2	000.3	23.4	+023.3	-007.3	0.

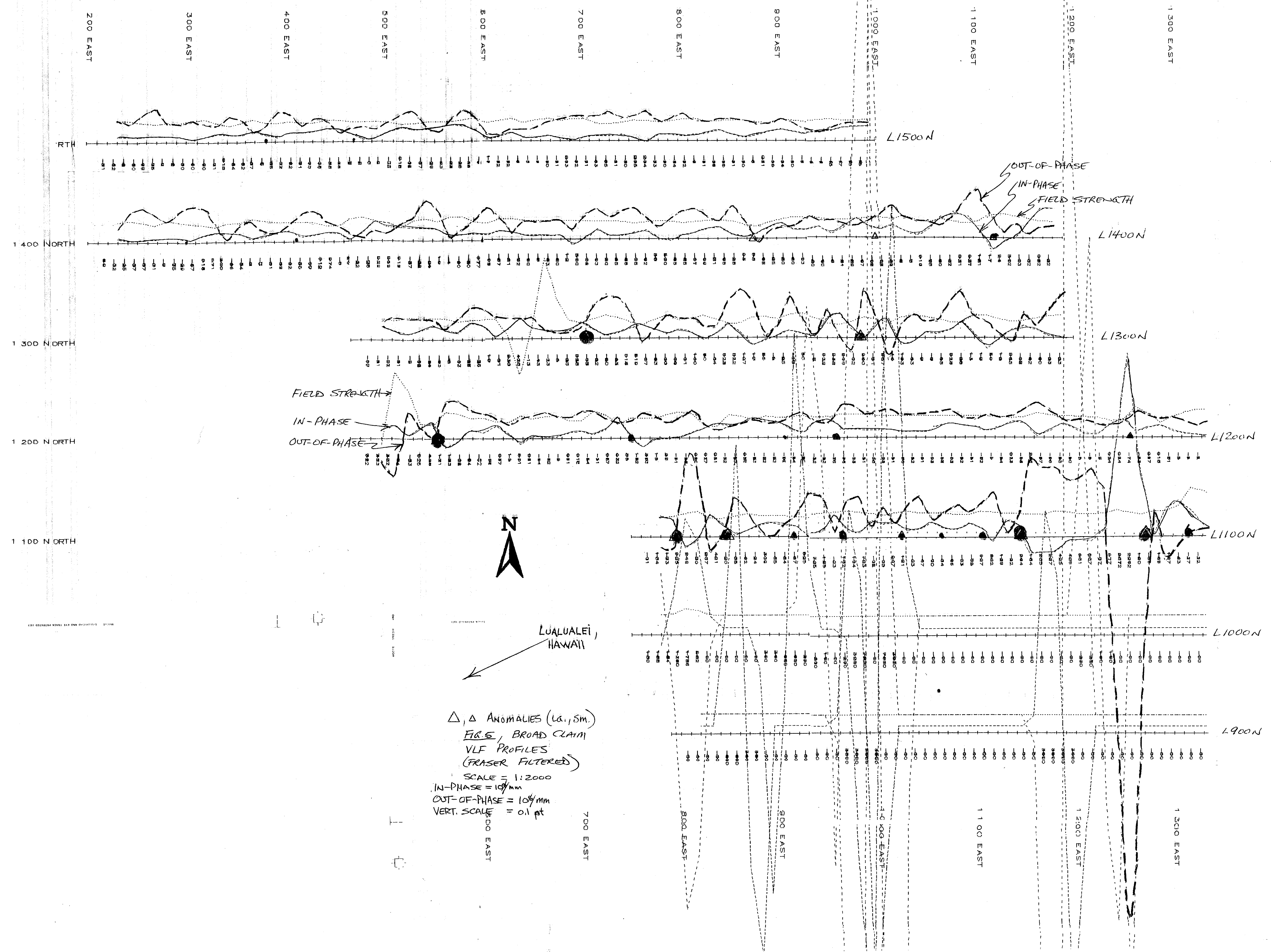
====>

F2=ADDLN F3=SAVE F4=FILE ALT-{ B=BLOCK L=BLINE K=BCOPY M=BMOVE G=BDEL D=DEL }

c:broad.xyz line=521 column=7 size=523 memory=403K

1400N	1160E	56316.01	21.4	-006.4	-011.2	000.3	23.4	+023.3	-007.3	0.
1400N	1170E	56286.10	21.4	-008.2	+001.6	000.6	23.4	+042.8	-004.9	0.
1400N	1180E	56383.78	21.4	-008.3	+000.0	000.6	23.4	+045.6	-008.8	0.
1400N	1190E	56653.16	21.4	+002.8	-014.8	000.3	23.4	+032.9	-010.6	0.

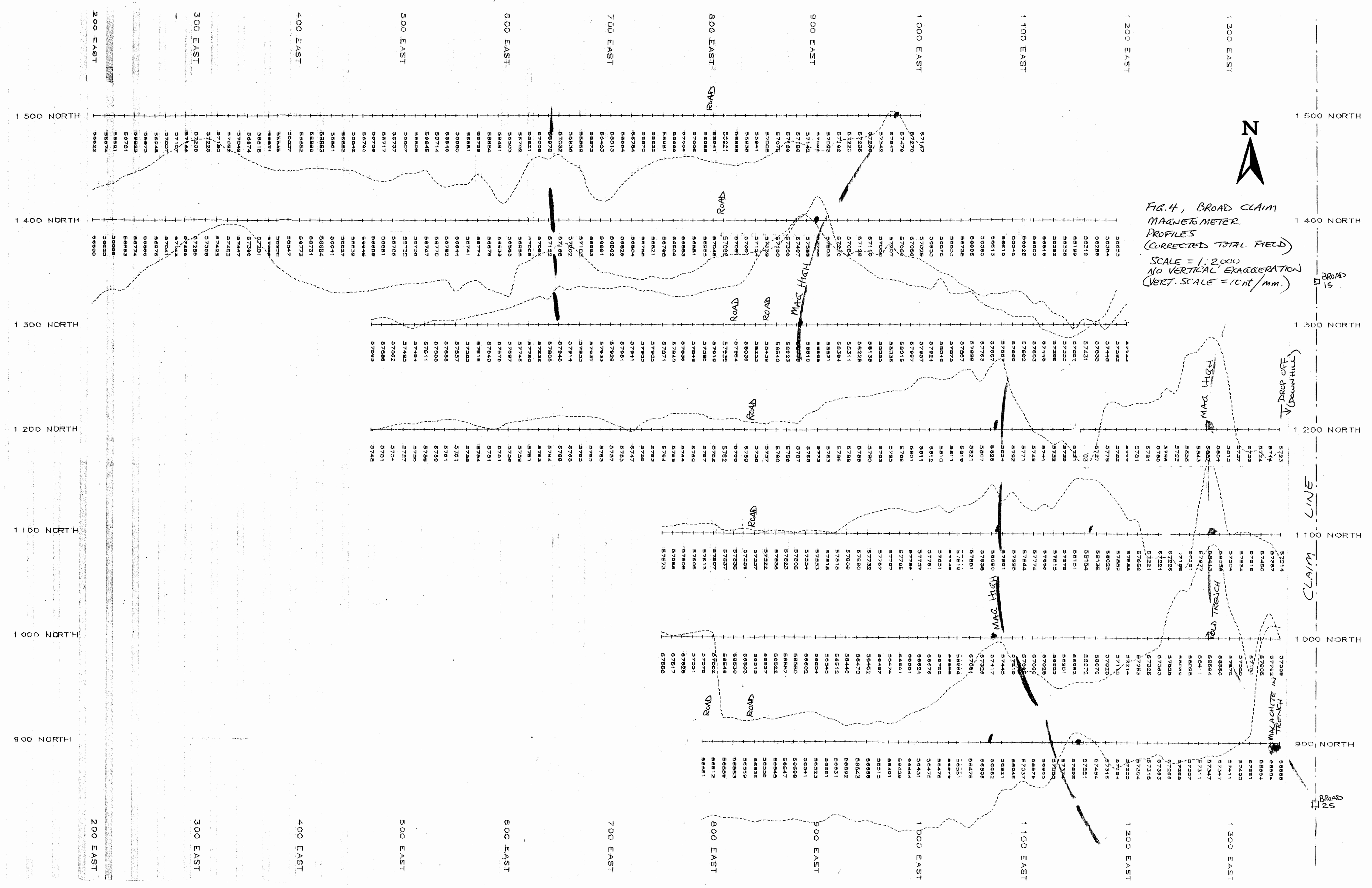
* * * end of file * * *



GEOLOGICAL BRANCH
 ASSESSMENT REPORT

24,412

Fig. 5
 VLF PROFILES
 1:2000 SCALE
 PROFESSIONAL ENGINEER
 PROVINCE OF BRITISH COLUMBIA
 E. M. RODGERS
 BRITISH COLUMBIA
 ENGINEER



LOGICAL BRANCH
ASSESSMENT REPORT
24,412

FIG. 6
MAGNETOMETER PROFILES
1:2000 SCALE

