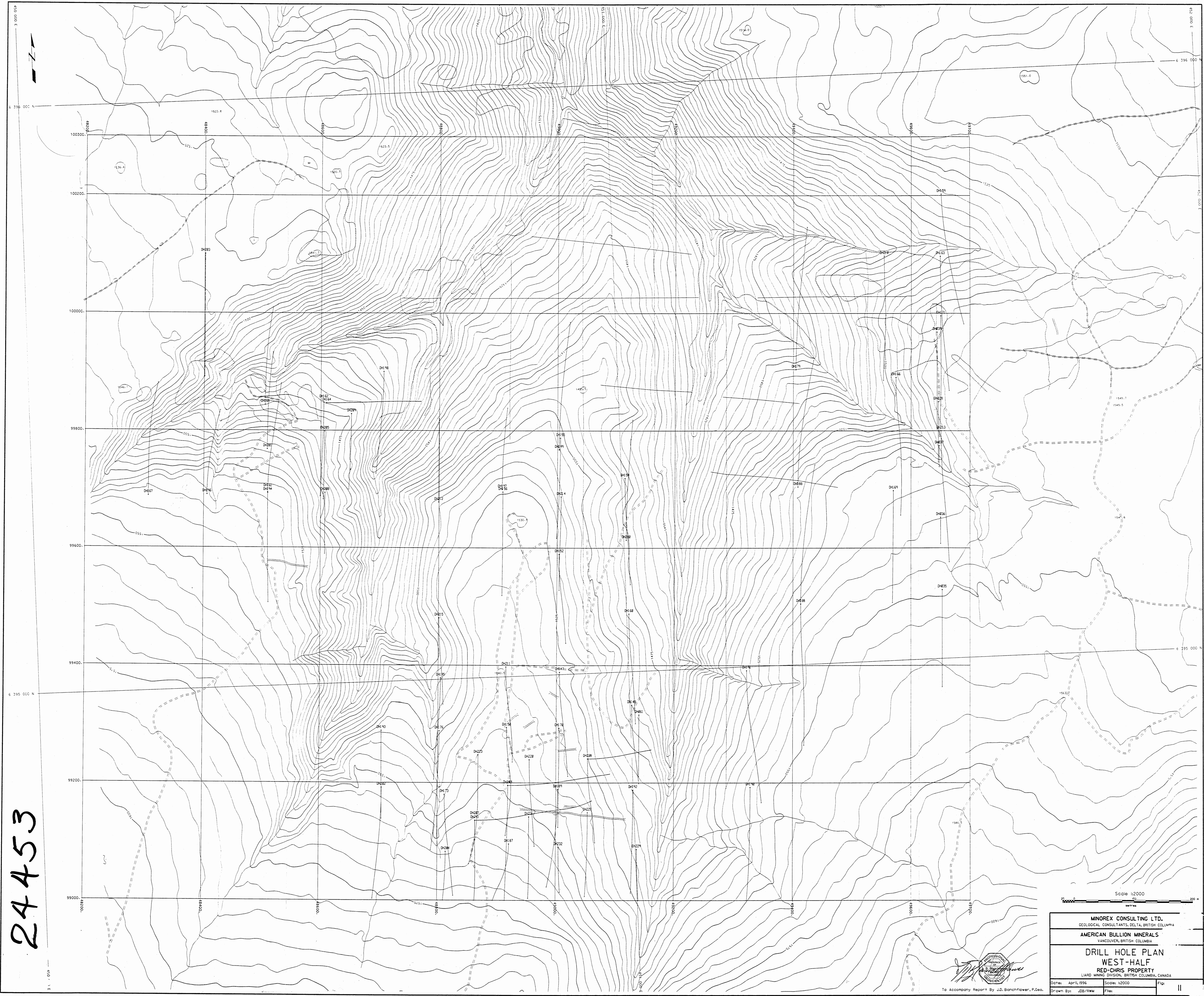


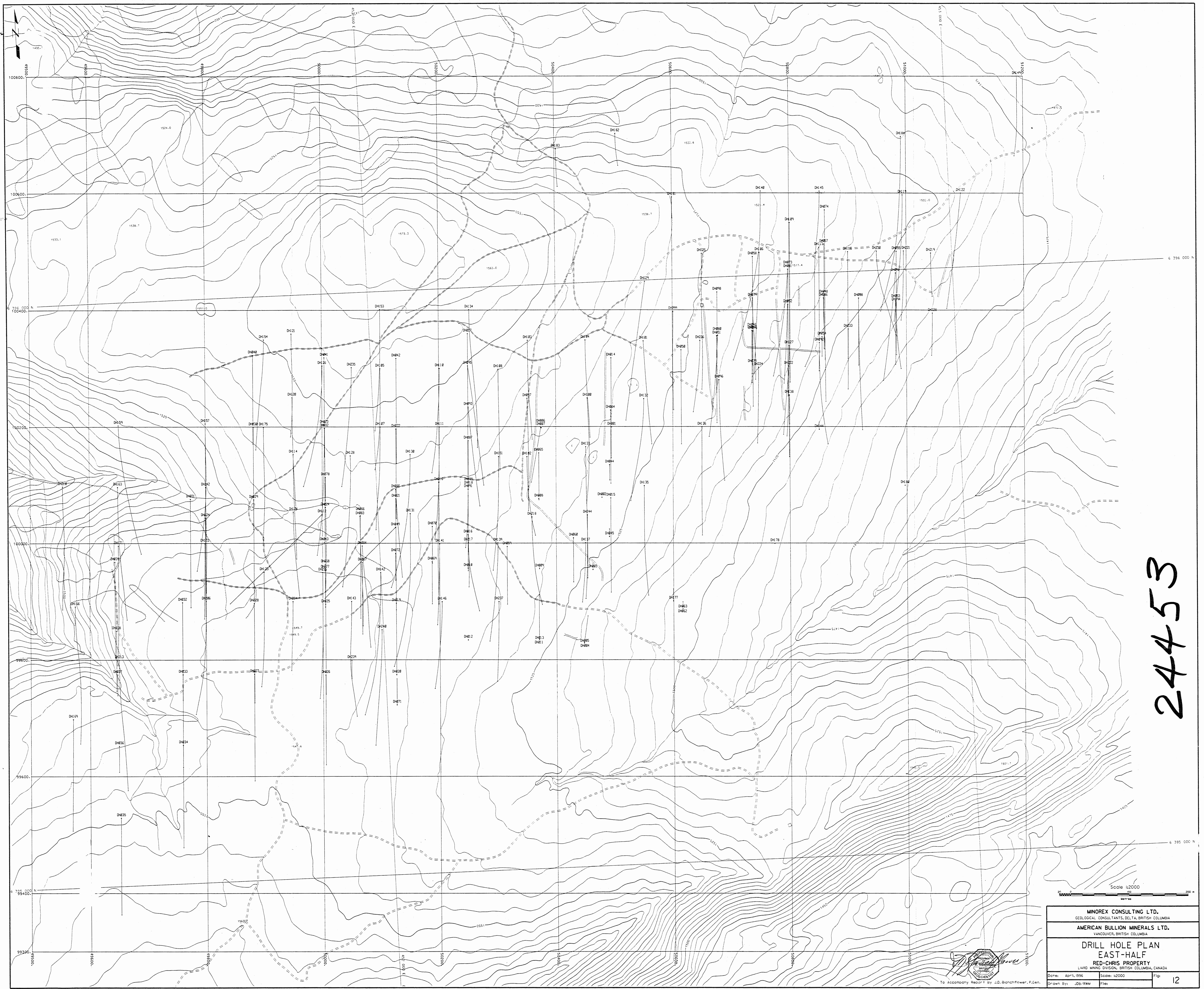
24453



Scale 1:2000

MINOREX CONSULTING LTD. GEOLOGICAL CONSULTANTS, DELTA, BRITISH COLUMBIA		
AMERICAN BULLION MINERALS VANCOUVER, BRITISH COLUMBIA		
DRILL HOLE PLAN WEST-HALF RED-CHRIS PROPERTY LARD MINING DIVISION, BRITISH COLUMBIA, CANADA		
Date: April, 1996	Scale: 1:2000	Fig: II
Drawn By: JCB/RHM	File:	

To Accompany Report By J.D. Blanchflower, P. Geo.



24453

Scale 1:2000

MINOREX CONSULTING LTD.
 GEOLOGICAL CONSULTANTS, DELTA, BRITISH COLUMBIA

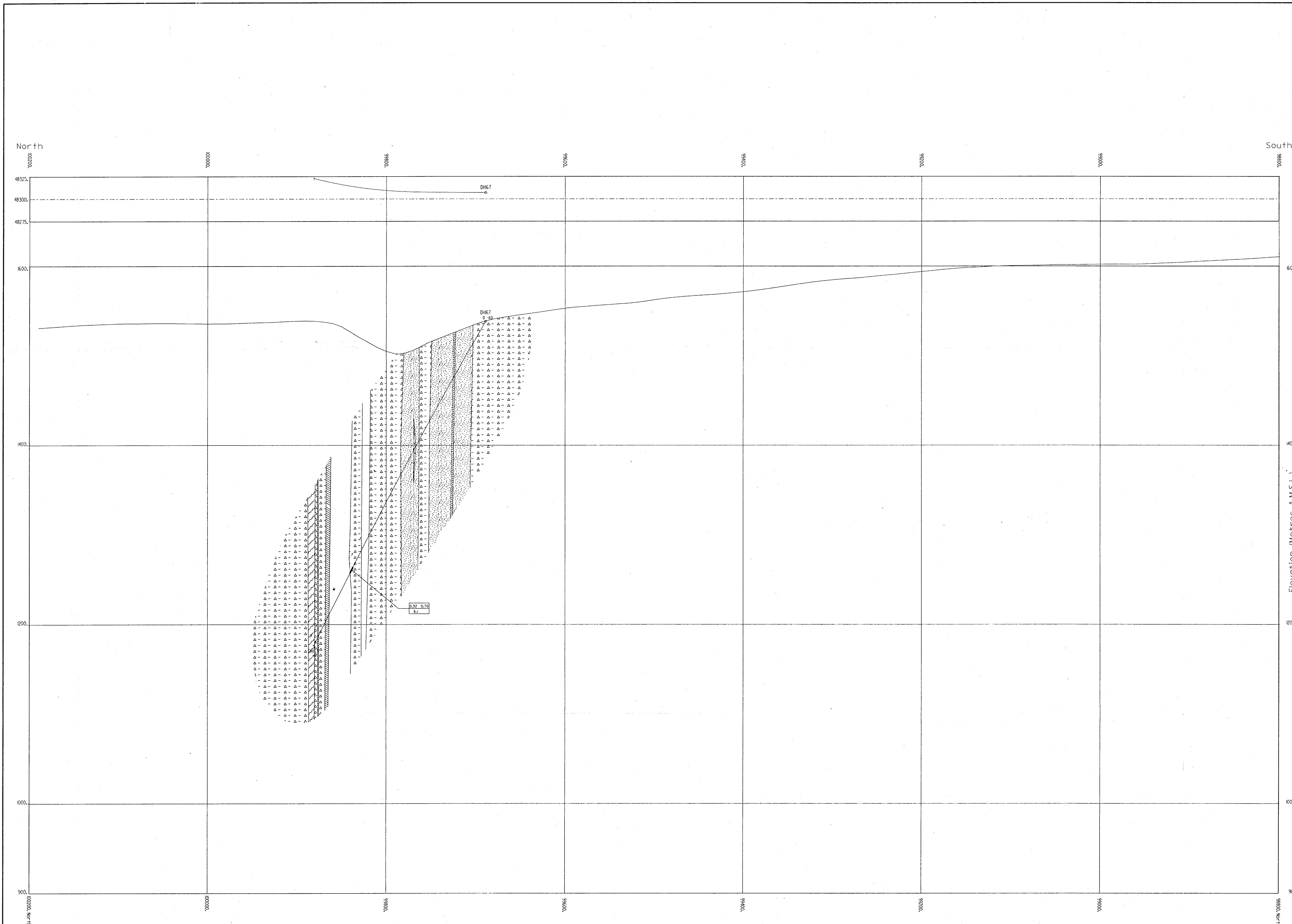
AMERICAN BULLION MINERALS LTD.
 VANCOUVER, BRITISH COLUMBIA

DRILL HOLE PLAN
EAST-HALF
RED-CHRIS PROPERTY
 LIAID MINING DIVISION, BRITISH COLUMBIA, CANADA

Date: April, 1996 Scale: 1:2000 File: 12

Drawn By: JDB/RW

To Accompany Report by J.D. Bingham, P.Eng.

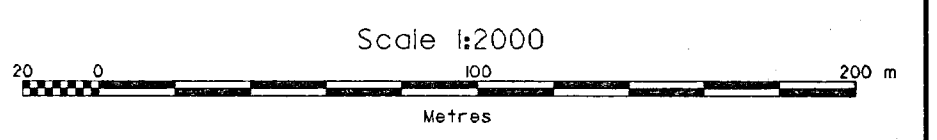
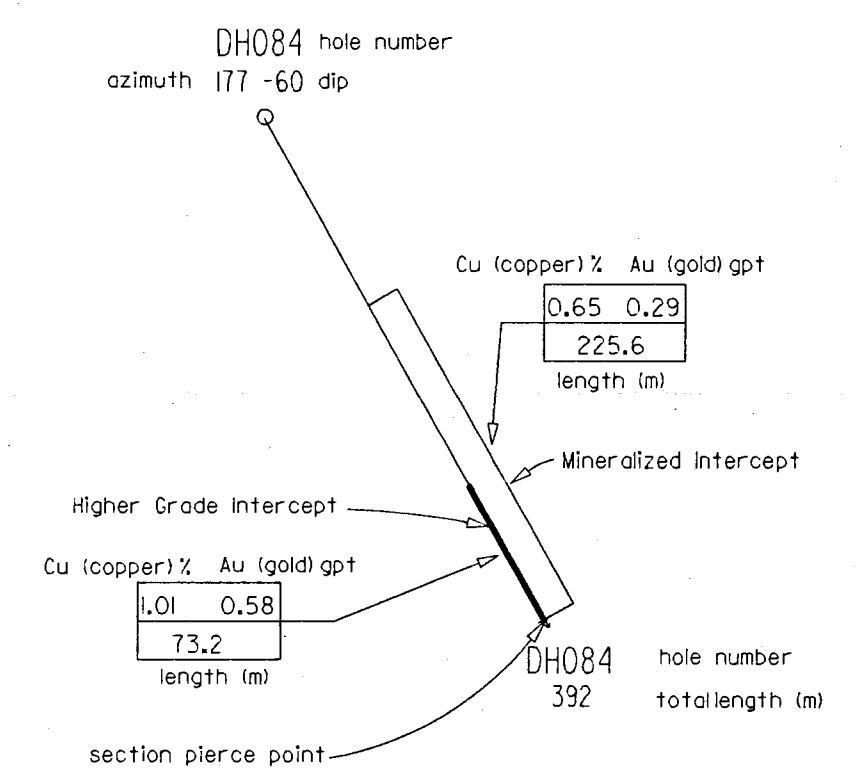


LEGEND

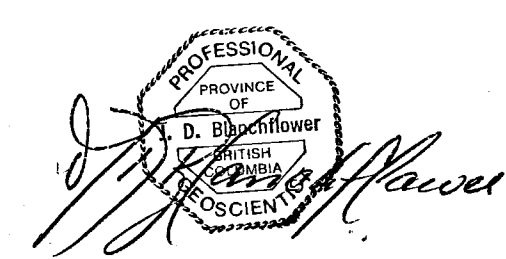
- MIDDLE JURASSIC**
Bowser Lake Group
 mJA Ashuan Formation (SLST)-siltstone, sandstone, conglomerate
- EARLY JURASSIC**
Red Stock
 DTYE Undivided late-stage dyke
 DLAT Leucocratic aphanitic dyke
 DAND Melanocratic aphanitic dyke
 DMAF Pyroxene-biotite porphyry dyke
 DOCA Quartz-carbonate amygdaloidal dyke
 DPFH Feldspar-hornblende-biotite porphyry dyke
 PBRX Intrusive Breccia - Undivided intrusive breccia
 PBRM Intrusive Breccia - Late Phase fragments and matrix
 PPHL Late Phase - Plagioclase-hornblende porphyry monzodiorite
 PBRM Intrusive Breccia - Main Phase fragments and matrix
 PPH2 Main Phase Type 2 - Main Phase monzodiorite dyke
 PPHM Main Phase - Plagioclase-hornblende porphyry monzodiorite
- MIDDLE TO UPPER TRIASSIC**
Stuhini Group or Equivalent
 muTvs Volcanic sandstone, siltstone (VSED)
 muTvo Dynamite Hill Volcanics (VOLD) - augite phyrlic volcanic flow
- SYMBOLS**
 Geologic Contact
 Fault
 Fault Breccia Zone
- SECTION ORIENTATION**
 Looking EAST 090°

QUARTZ STOCKWORK ZONES

- T = Trace
 V = Very Weak
 W = Weak
 M = Medium
 S = Strong
 I = Intense

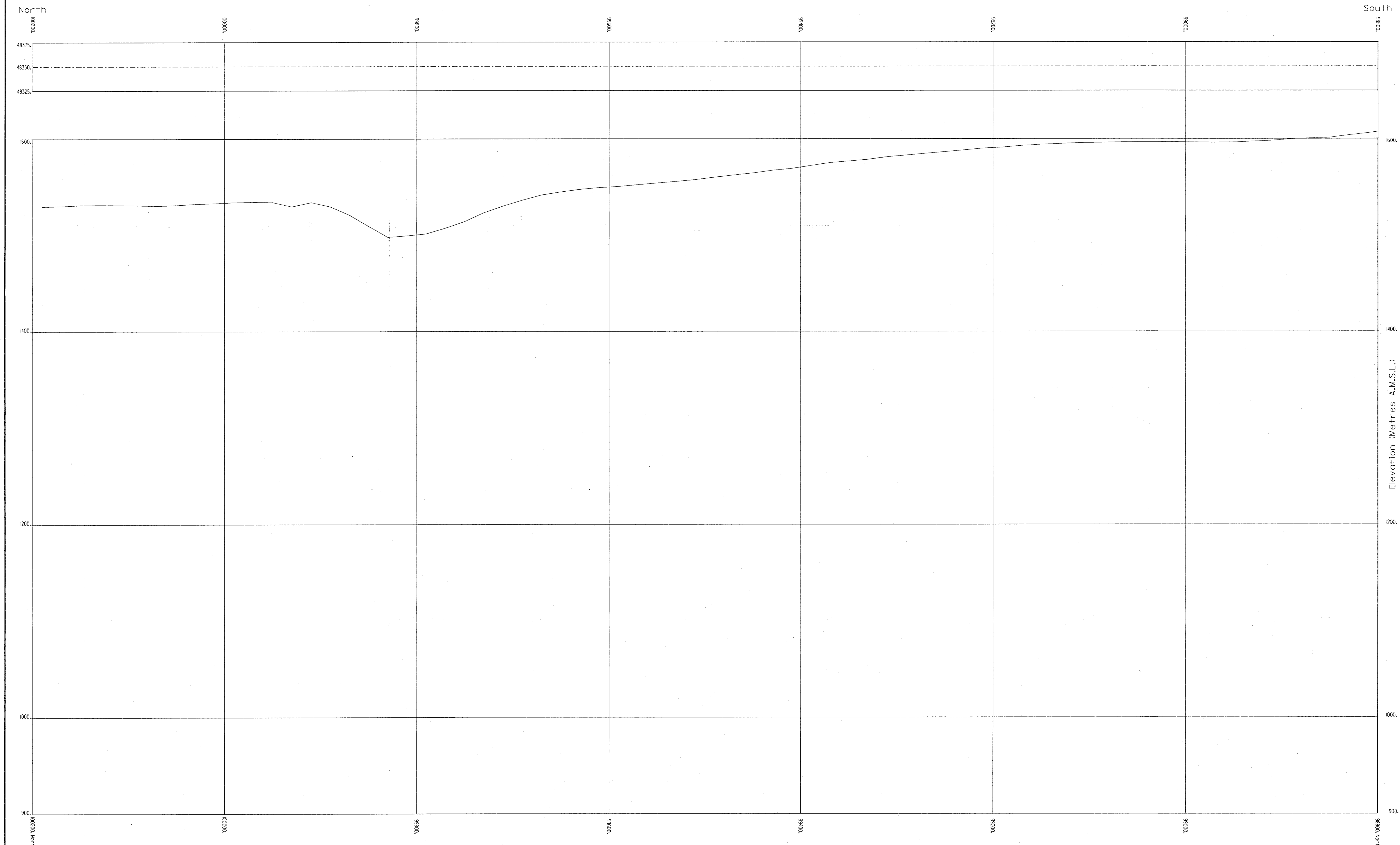


24453



MINOREX CONSULTING LTD. GEOLOGICAL CONSULTANTS, DELTA, BRITISH COLUMBIA		
AMERICAN BULLION MINERALS LTD. VANCOUVER, BRITISH COLUMBIA		
DRILL SECTION 48300 E RED-CHRIS PROPERTY LIARD MINING DIVISION, BRITISH COLUMBIA, CANADA		
Date: April, 1996	Scale: 1:2000	Fig: 13
Drawn By: JDB/RMM	File:	

To accompany Report by J.D. Blanchflower, P.Eng.

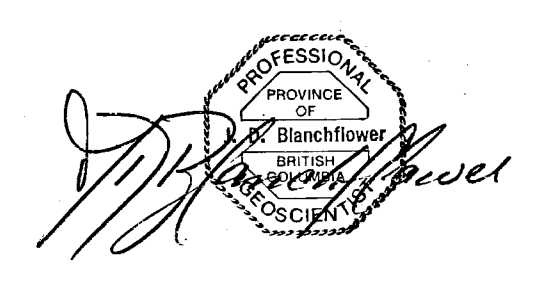
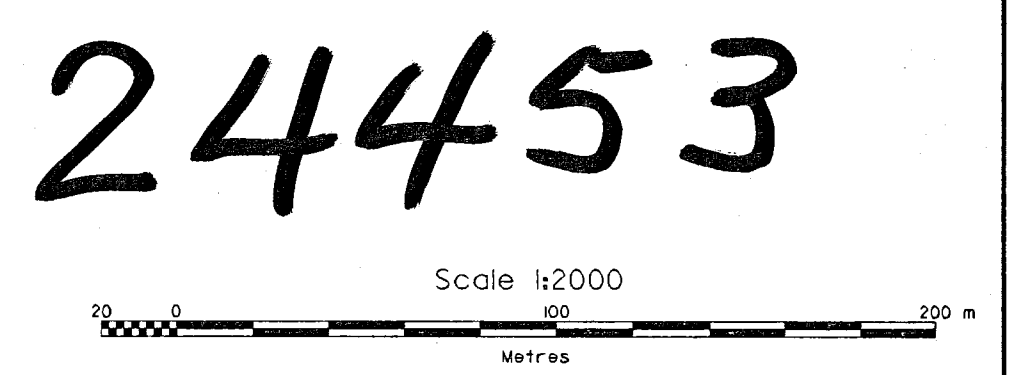
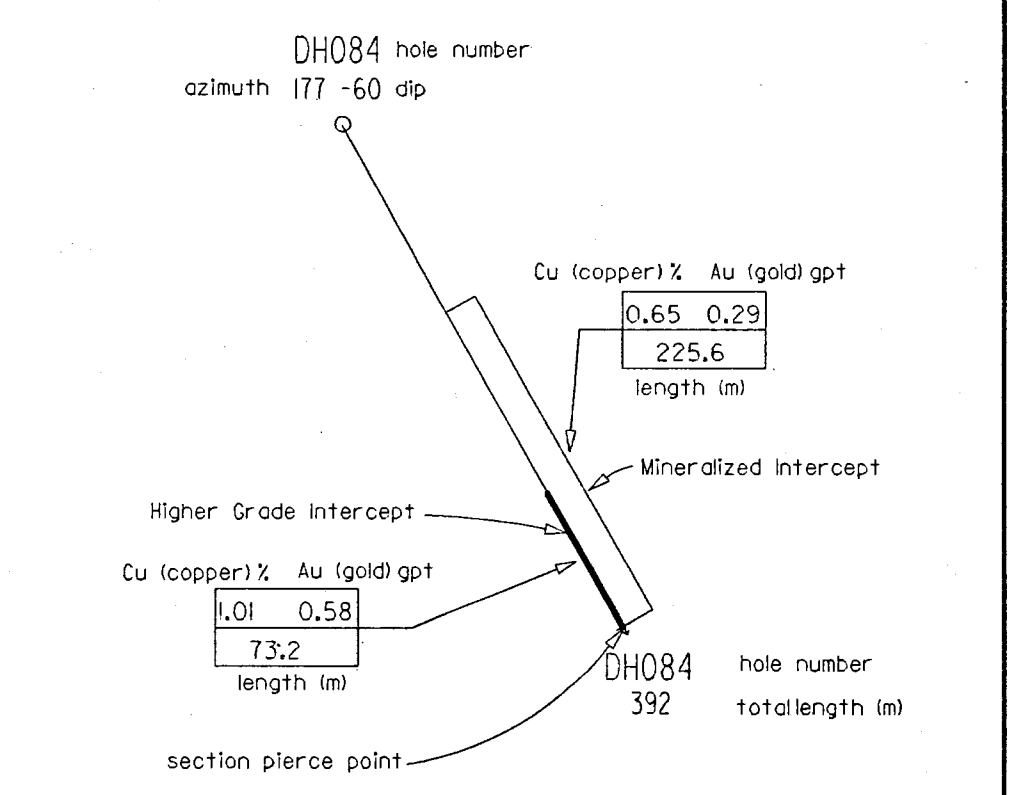


LEGEND

- MIDDLE JURASSIC
Bowser Lake Group
- mJA Ashman Formation (SLST) - siltstone, sandstone, conglomerate
- EARLY JURASSIC
Red Stock
- DIKE Undivided late-stage dyke
 - DLAT Leucocratic aphanitic dyke
 - DAND Melanocratic aphanitic dyke
 - DMAF Pyroxene-biotite porphyry dyke
 - DOCA Quartz-carbonate amygdaloidal dyke
 - DPFH Feldspar-hornblende-biotite porphyry dyke
 - PBRX Intrusive Breccia - Undivided intrusive breccia
 - PBRM Intrusive Breccia - Late Phase fragments and matrix
 - PPHL Late Phase - Plagioclase-hornblende porphyry monzodiorite
 - PBRM Intrusive Breccia - Main Phase fragments and matrix
 - PPH2 Main Phase Type 2 - Main Phase monzodiorite dyke
 - PPHM Main Phase - Plagioclase-hornblende porphyry monzodiorite
- MIDDLE TO UPPER TRIASSIC
Stuhini Group or Equivalent
- muVs Volcanic sandstone, siltstone (VSED)
 - muVc Dynamite Hill Volcanics (VOLL) - augite phyrlic volcanic flow

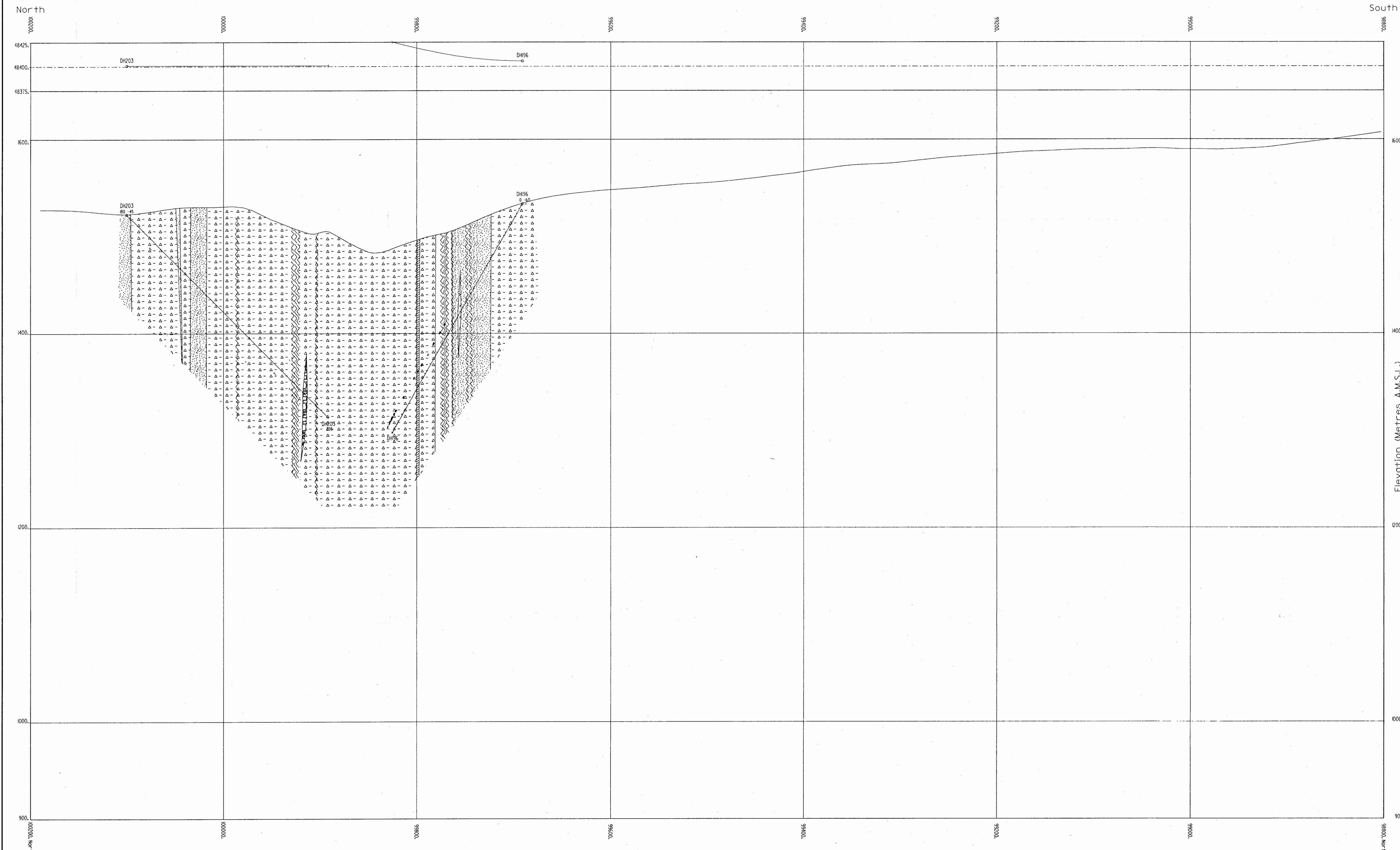
- SYMBOLS
- Geologic Contact
 - Fault
 - Fault Breccia Zone
- SECTION ORIENTATION
Looking EAST 090°

- QUARTZ STOCKWORK ZONES
- T = Trace
 - V = Very Weak
 - W = Weak
 - M = Medium
 - S = Strong
 - I = Intense



To Accompany Report By J.D. Blanchflower, P. Geo.

MINOREX CONSULTING LTD. GEOLOGICAL CONSULTANTS, DELTA, BRITISH COLUMBIA		
AMERICAN BULLION MINERALS LTD. VANCOUVER, BRITISH COLUMBIA		
DRILL SECTION 48350 E RED-CHRIS PROPERTY LIARD MINING DIVISION, BRITISH COLUMBIA, CANADA		
Date: April, 1996	Scale: 1:2000	Fig: 14
Drawn By: JDB/RMM	File:	



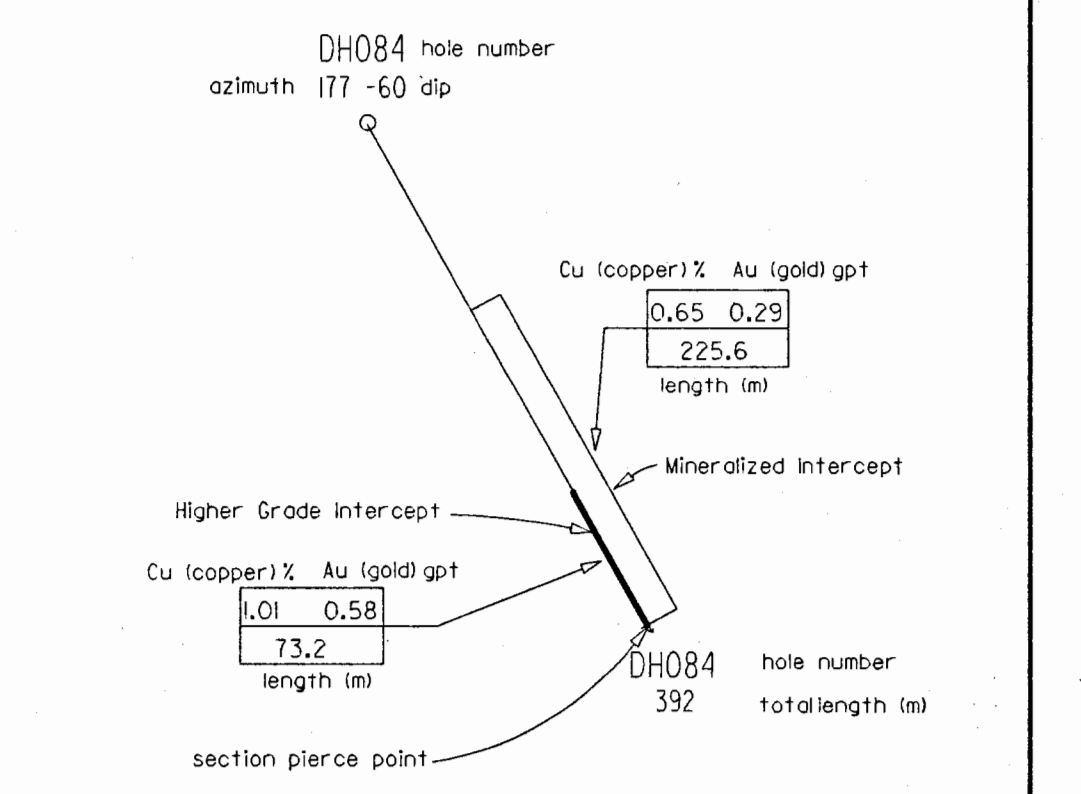
LEGEND

- MIDDLE JURASSIC**
Bowser Lake Group
- muA Ashman Formation (SLST) - siltstone, sandstone, conglomerate
- EARLY JURASSIC**
Red Stock
- DYKE Undivided late-stage dyke
 - DLAT Leucocratic aphanitic dyke
 - DAMD Melanocratic aphanitic dyke
 - DMAF Pyroxene-biotite porphyry dyke
 - DOCA Quartz-carbonate amygdaloidal dyke
 - DPFH Feldspar-hornblende-biotite porphyry dyke
 - PBRX Intrusive Breccia - undivided intrusive breccia
 - PBRL Intrusive Breccia - Late Phase fragments and matrix
 - PPHL Late Phase - Plagioclase-hornblende porphyry monzodiorite
 - PBRM Intrusive Breccia - Main Phase fragments and matrix
 - PPH2 Main Phase Type 2 - Main Phase monzodiorite dyke
 - PPHM Main Phase - Plagioclase-hornblende porphyry monzodiorite

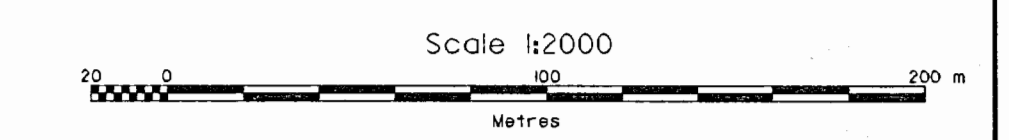
- MIDDLE TO UPPER TRIASSIC**
Stuhini Group or Equivalent
- muTvs Volcanic sandstone, siltstone (VSED)
 - muTva Dynamite Hill Volcanics (VOLD) - augite phyrlic volcanic flow

- SYMBOLS**
- Geologic Contact
 - Fault
 - Fault Breccia Zone
- SECTION ORIENTATION**
Looking EAST 090°

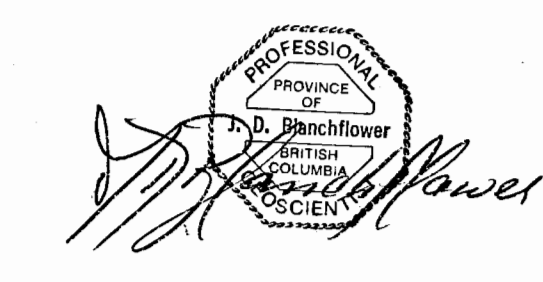
- QUARTZ STOCKWORK ZONES**
- T = Trace
 - V = Vary Weak
 - W = Weak
 - M = Medium
 - S = Strong
 - I = Intense



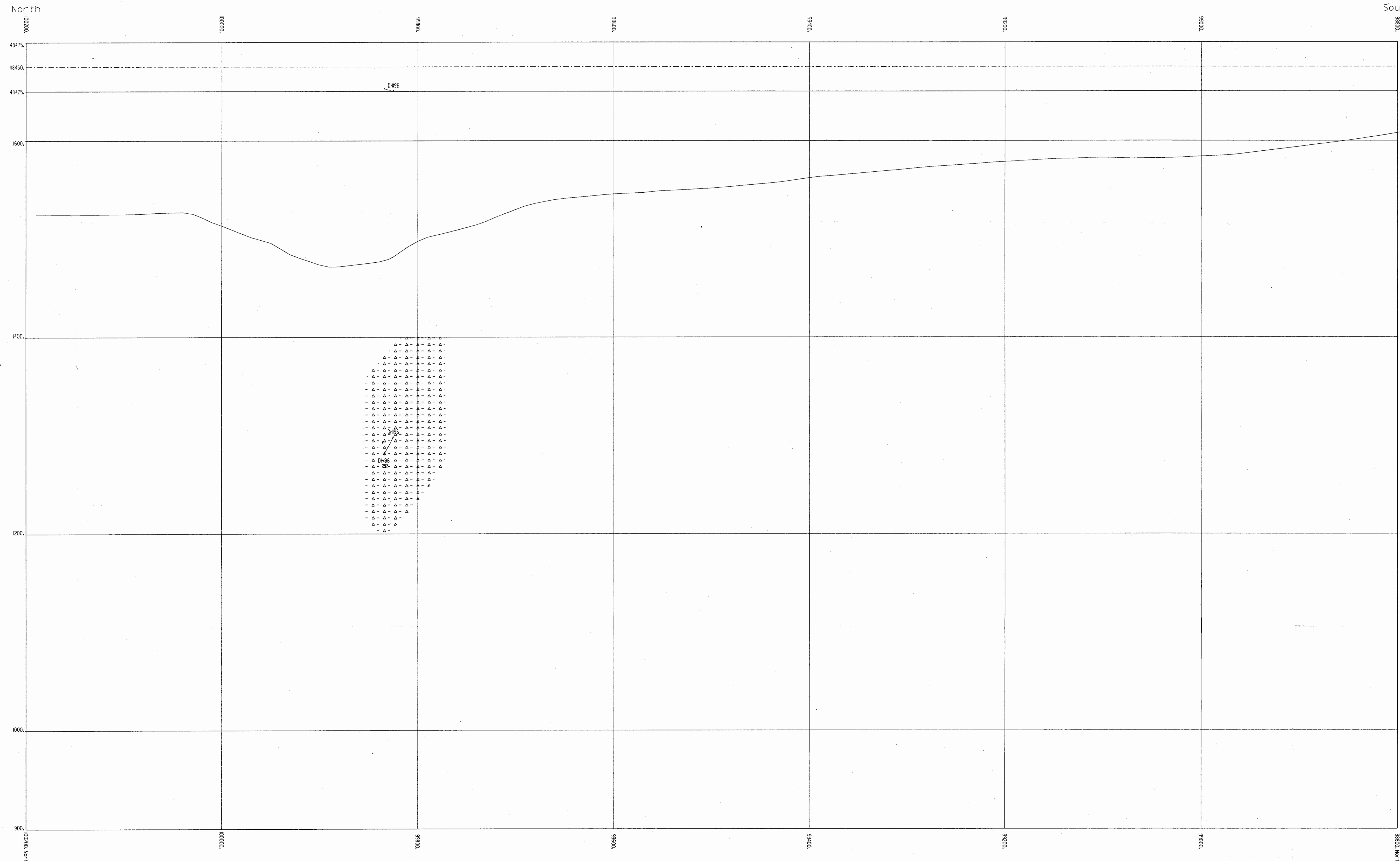
24453



MINOREX CONSULTING LTD. GEOLOGICAL CONSULTANTS, DELTA, BRITISH COLUMBIA		
AMERICAN BULLION MINERALS LTD. VANCOUVER, BRITISH COLUMBIA		
DRILL SECTION 48400 E		
RED-CHRIS PROPERTY LIARD MINING DIVISION, BRITISH COLUMBIA, CANADA		
Date: April, 1996	Scale: 1:2000	Fig: 15
Drawn By: JDB/RWM	Files:	



To accompany Report By J.D. Blanchflower, P.Geo.



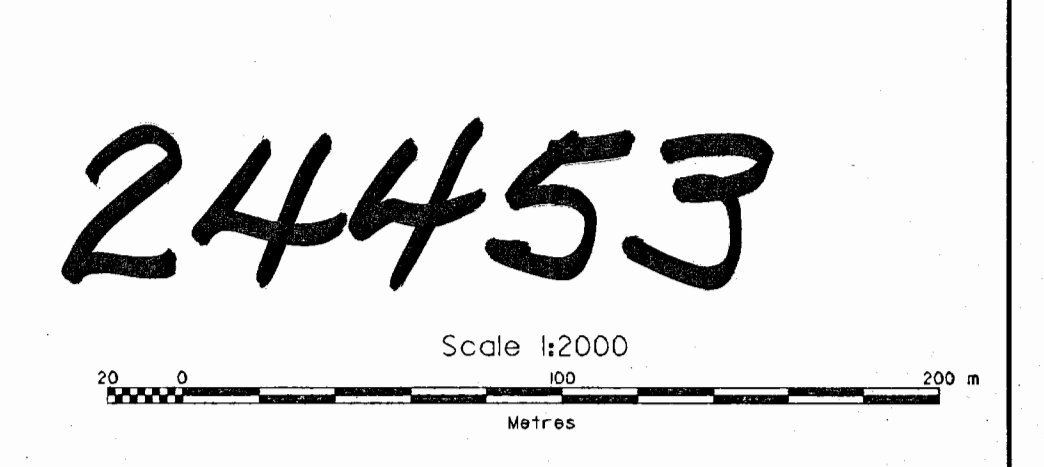
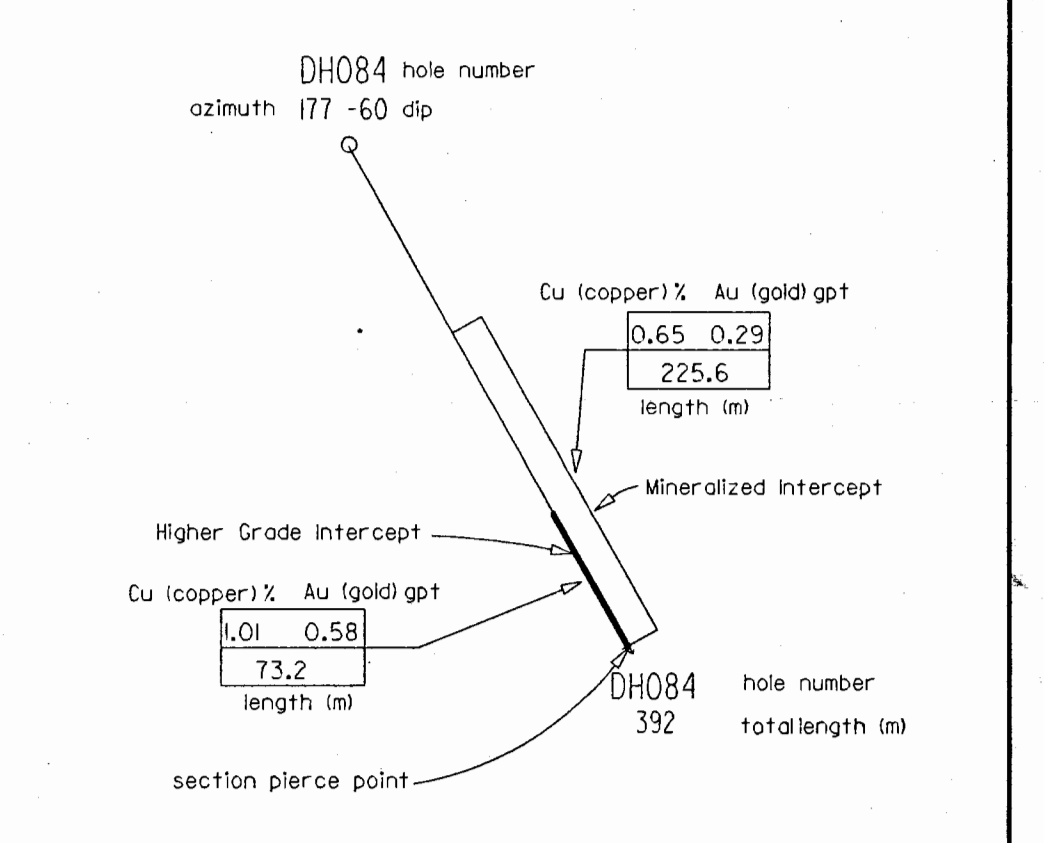
LEGEND

- MIDDLE JURASSIC**
Bowser Lake Group
 mJA Ashman Formation (SLST) - siltstone, sandstone, conglomerate
- EARLY JURASSIC**
Red Stock
- DIKE Undivided late-stage dyke
 - DLAT Leucocratic aphanitic dyke
 - DAND Melanocratic aphanitic dyke
 - DMAF Pyroxene-biotite porphyry dyke
 - DOCA Quartz-carbonate amygdaloidal dyke
 - DPFH Feldspar-hornblende-biotite porphyry dyke
 - PBRX Intrusive Breccia - Undivided Intrusive breccia
 - PBRL Intrusive Breccia - Late Phase fragments and matrix
 - PHL Late Phase - Plagioclase-hornblende porphyry monzodiorite
 - PBRM Intrusive Breccia - Main Phase fragments and matrix
 - PPH2 Main Phase Type 2 - Main Phase monzodiorite dyke
 - PPHM Main Phase - Plagioclase-hornblende porphyry monzodiorite

- MIDDLE TO UPPER TRIASSIC**
Stuhini Group or Equivalent
- muTvs Volcanic sandstone, siltstone (VSD)
 - muTva Dynamite Hill Volcanics (VLD) - augite phyric volcanic flow

- SYMBOLS**
- Geologic Contact
 - Fault
 - Fault Breccia Zone

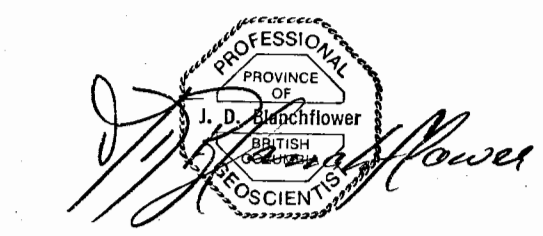
- QUARTZ STOCKWORK ZONES**
- T = Trace
 - V = Very Weak
 - W = Weak
 - M = Medium
 - S = Strong
 - I = Intense

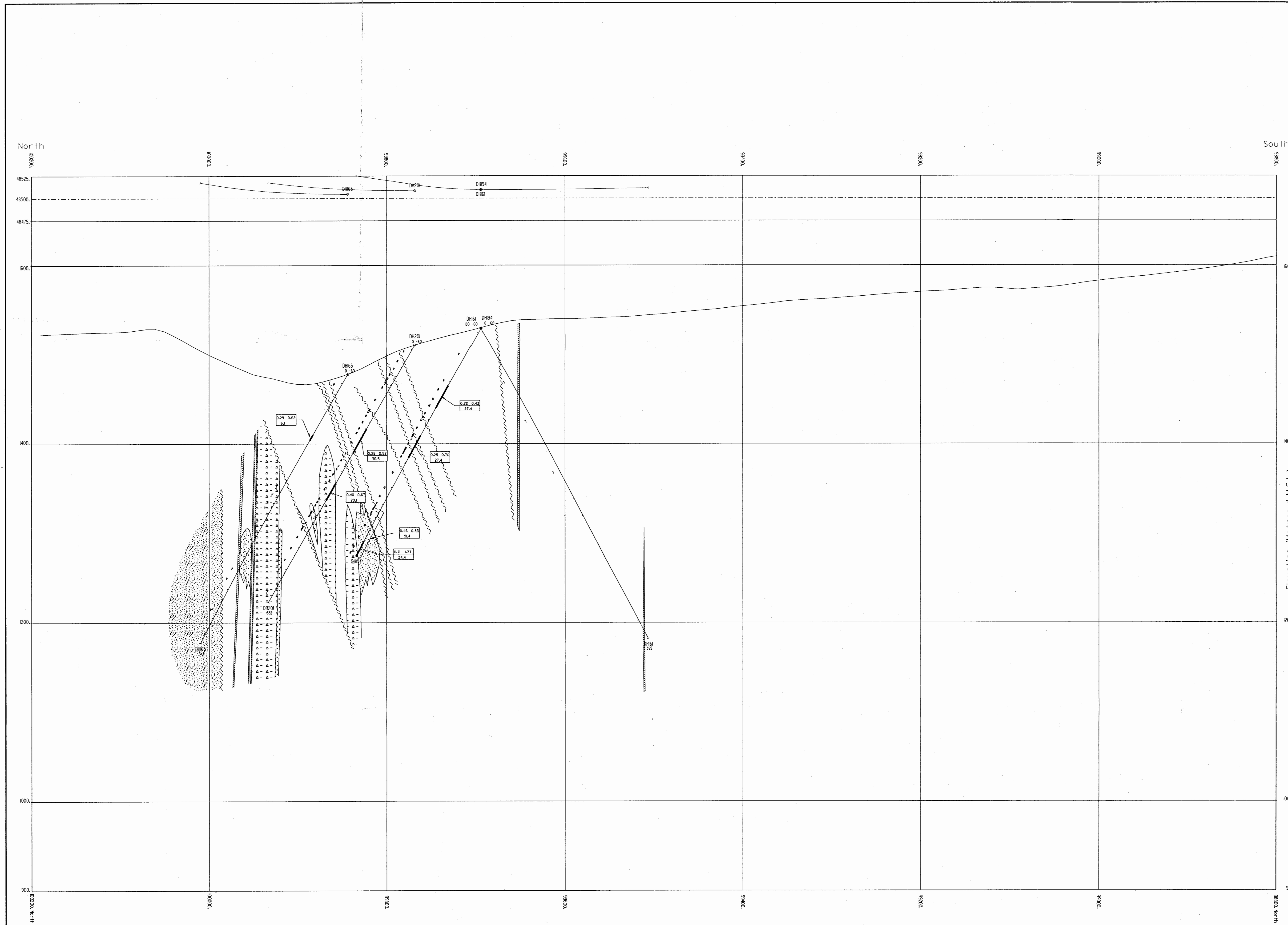


24453

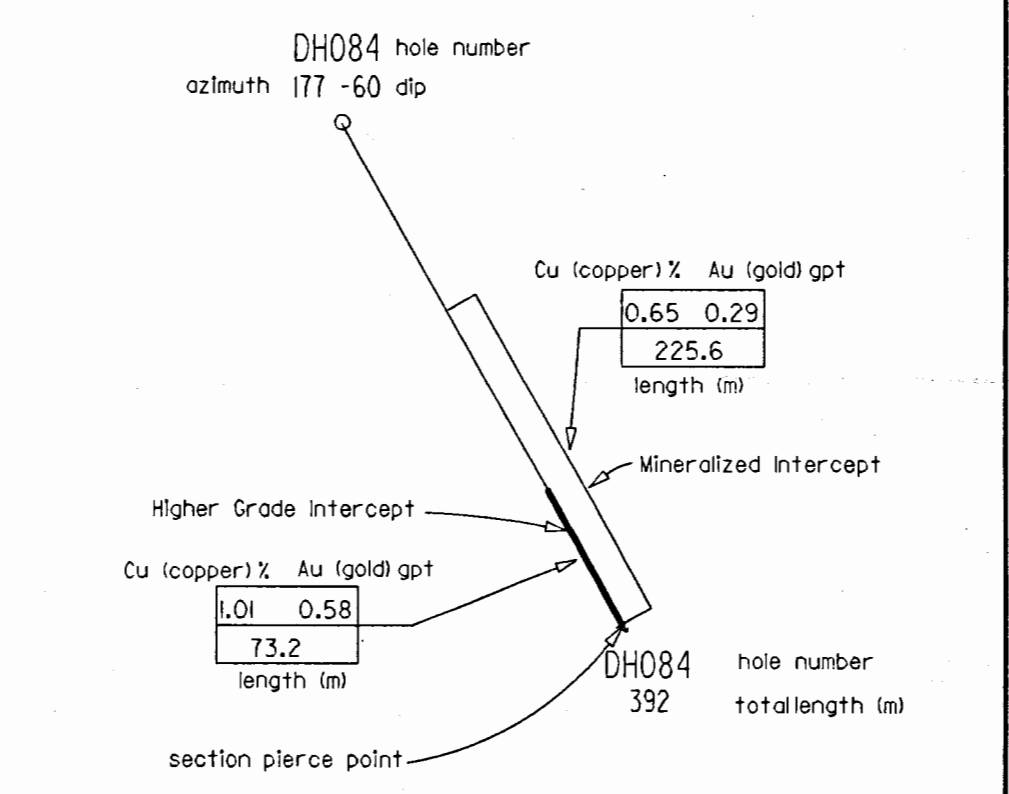
Scale 1:2000

MINOREX CONSULTING LTD. GEOLOGICAL CONSULTANTS, DELTA, BRITISH COLUMBIA		
AMERICAN BULLION MINERALS LTD. VANCOUVER, BRITISH COLUMBIA		
DRILL SECTION 48450 E RED-CHRIS PROPERTY LIARD MINING DIVISION, BRITISH COLUMBIA, CANADA		
Date: April, 1996	Scale: 1:2000	Fig: 16
Drawn By: JDB/RMM	File:	





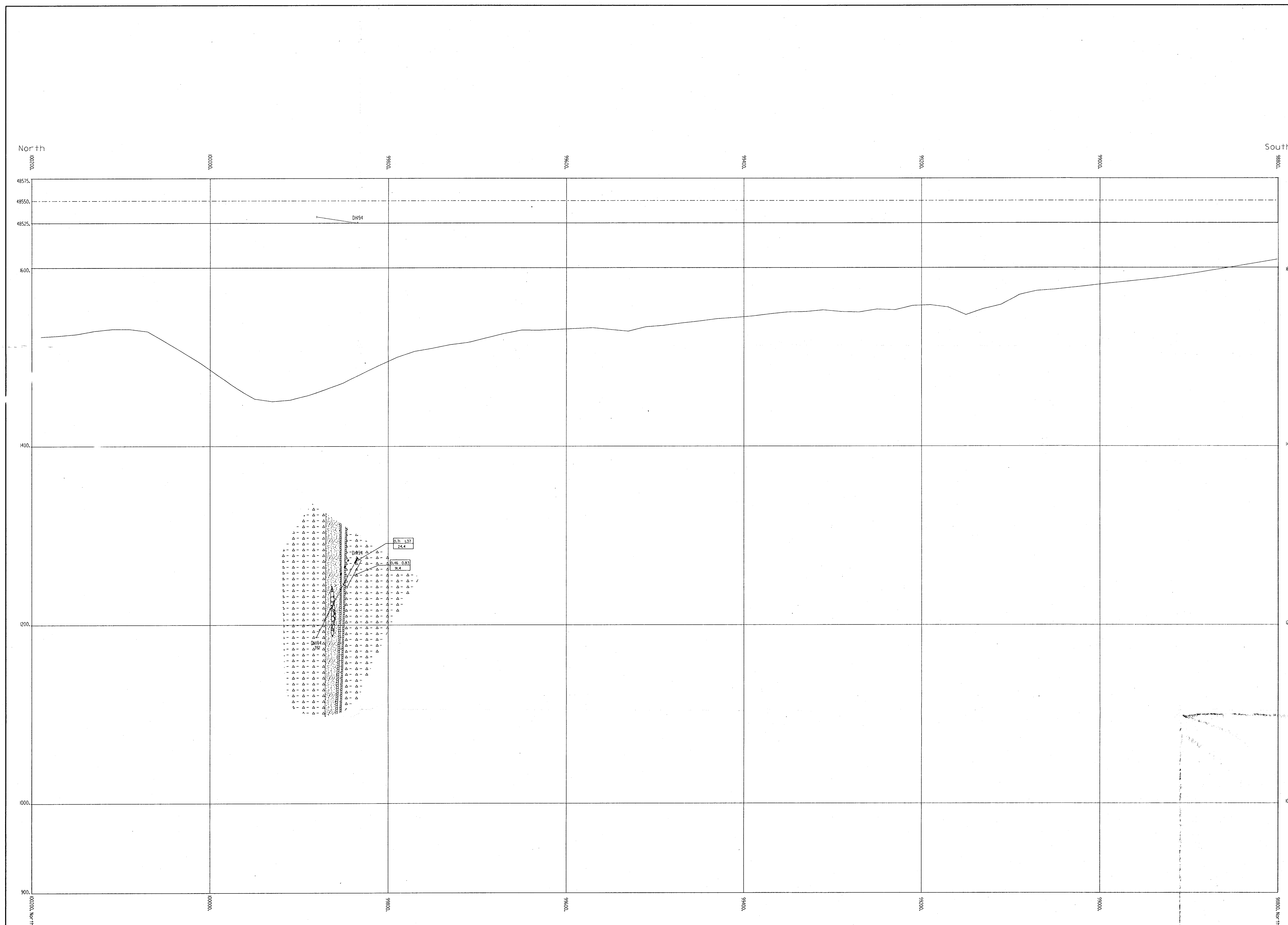
- LEGEND**
- MIDDLE JURASSIC**
 Bowser Lake Group
 mJA Ashman Formation (SLST) - siltstone, sandstone, conglomerate
- EARLY JURASSIC**
 Red Stock
 DYKE Undivided late-stage dyke
 DLAT Leucocratic aphanitic dyke
 DAND Melanocratic aphanitic dyke
 DMAF Pyroxene-biotite porphyry dyke
 DOCA Quartz-carbonate amygdaloidal dyke
 DPFH Feldspar-hornblende-biotite porphyry dyke
 PBRX Intrusive Breccia - Undivided intrusive breccia
 PBRL Intrusive Breccia - Late Phase fragments and matrix
 PPHL Late Phase - Plagioclase-hornblende porphyry monzodiorite
 PBRM Intrusive Breccia - Main Phase fragments and matrix
 PPHZ Main Phase Type 2 - Main Phase monzodiorite dyke
 PPHM Main Phase - Plagioclase-hornblende porphyry monzodiorite
- MIDDLE TO UPPER TRIASSIC**
 Stuhini Group or Equivalent
 muTvs Volcanic sandstone, siltstone (VSD)
 muTva Dynamite Hill Volcanics (VOLC) - augite phyric volcanic flow
- SYMBOLS**
 Geologic Contact
 Fault
 Fault-Breccia Zone
- SECTION ORIENTATION**
 Looking EAST 090°
- QUARTZ STOCKWORK ZONES**
 T = Trace
 V = Very Weak
 W = Weak
 M = Medium
 S = Strong
 I = Intense



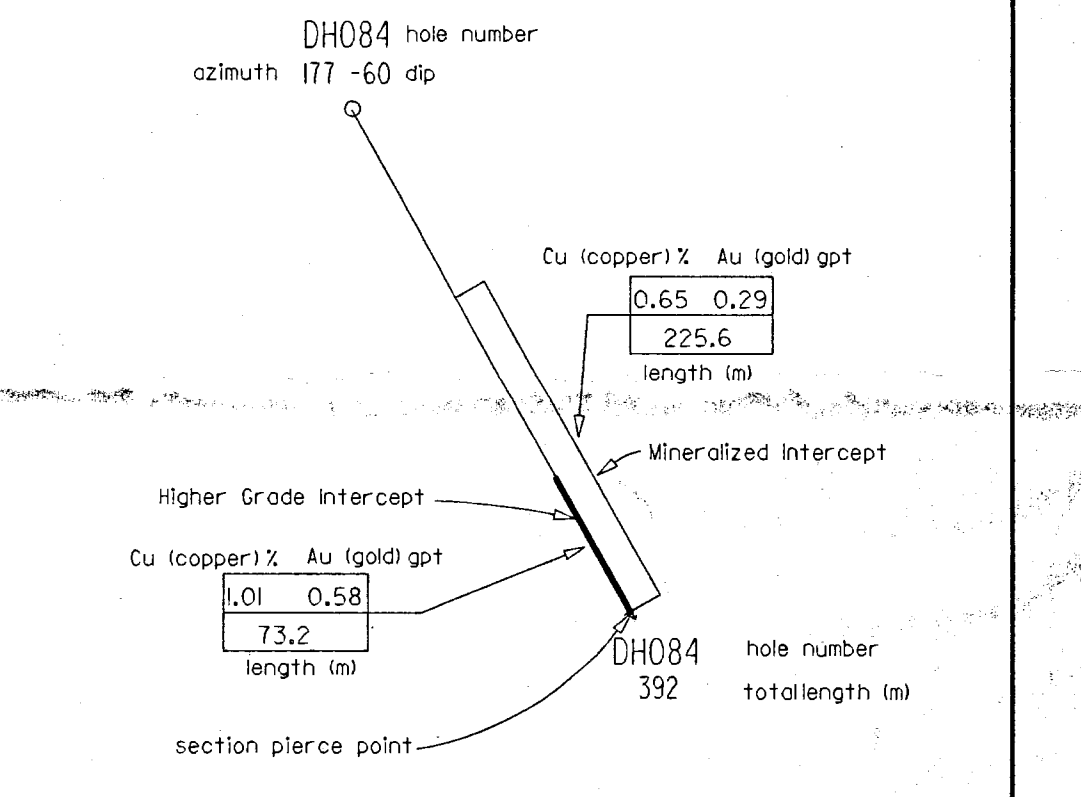
24453

Scale 1:2000
 0 100 200 m
 Metres

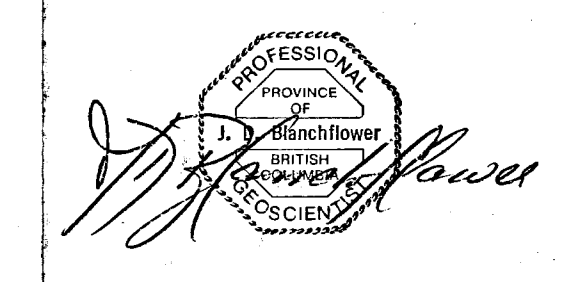
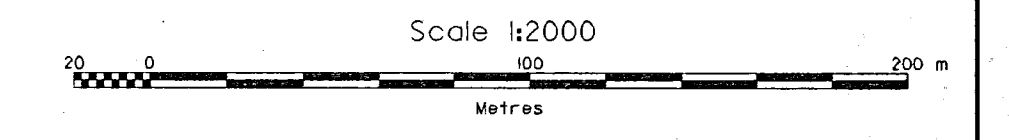
MINOREX CONSULTING LTD. GEOLOGICAL CONSULTANTS, DELTA, BRITISH COLUMBIA		
AMERICAN BULLION MINERALS LTD. VANCOUVER, BRITISH COLUMBIA		
DRILL SECTION 48500 E RED-CHRIS PROPERTY LIARD MINING DIVISION, BRITISH COLUMBIA, CANADA		
Date: April, 1996	Scale: 1:2000	Fig: 17
Drawn By: JDB/RWM	Files:	



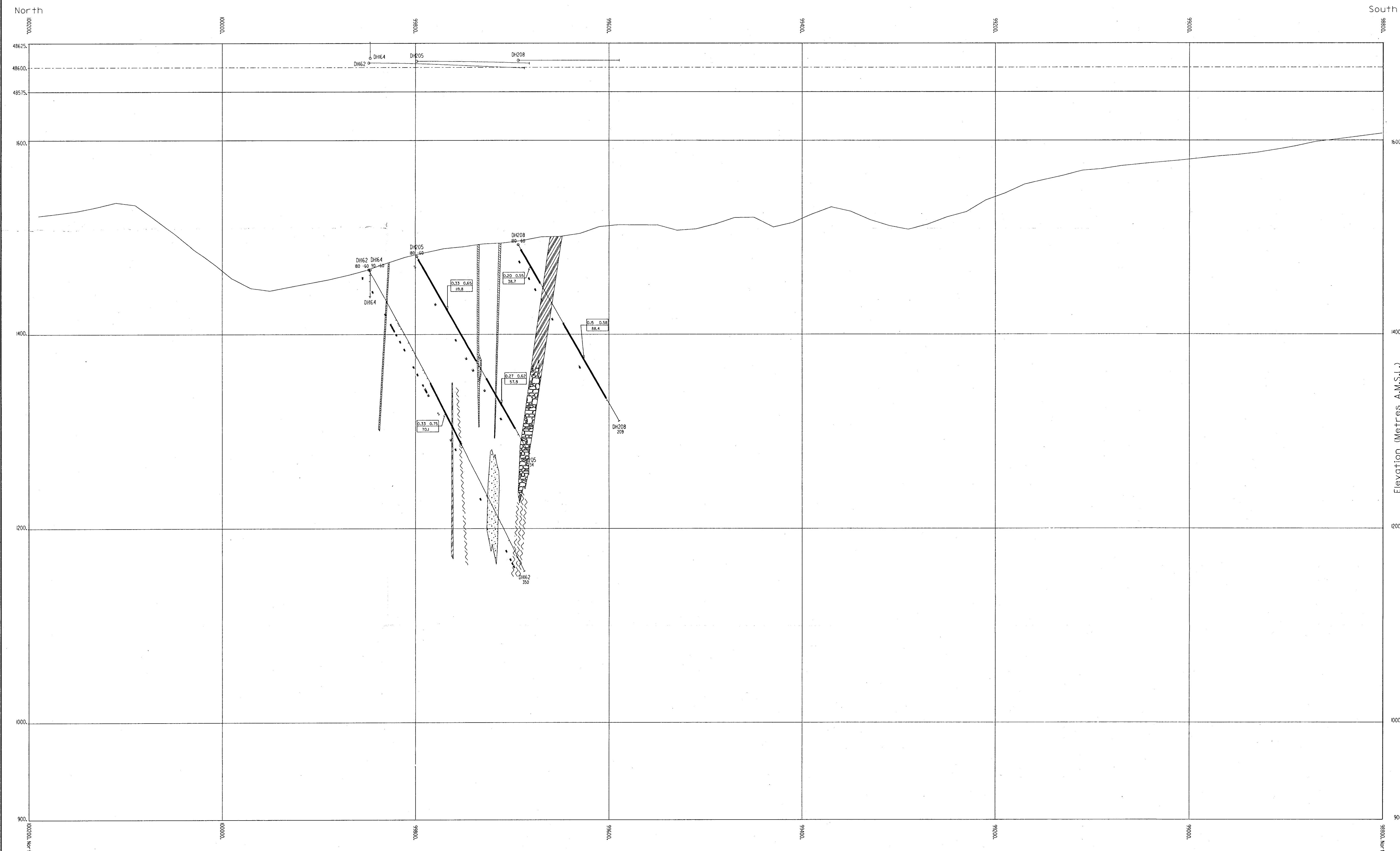
- LEGEND**
- MIDDLE JURASSIC**
Bowser Lake Group
- mJA Ashman Formation (SLST) - siltstone, sandstone, conglomerate
- EARLY JURASSIC**
Red Stock
- DYKE Undivided late-stage dyke
 - DLAT Leucocratic ophanitic dyke
 - DAND Melanocratic ophanitic dyke
 - DMAP Pyroxene-biotite porphyry dyke
 - DOCA Quartz-carbonate amygdaloidal dyke
 - DFFH Feldspar-hornblende-biotite porphyry dyke
 - FBRX Intrusive Breccia - Undivided Intrusive breccia
 - FBRL Intrusive Breccia - Late Phase fragments and matrix
 - PPHL Late Phase - Plagioclase-hornblende porphyry monzodiorite
 - PBRW Intrusive Breccia - Main Phase fragments and matrix
 - PPH2 Main Phase Type 2 - Main Phase monzodiorite dyke
 - PPHM Main Phase - Plagioclase-hornblende porphyry monzodiorite
- MIDDLE TO UPPER TRIASSIC**
Stuhini Group or Equivalent
- muVs Volcanic sandstone, siltstone (VSED)
 - muVc Dynamite Hill Volcanics (VOLC) - augite phyric volcanic flow
- SYMBOLS**
- Geologic Contact
 - Fault
 - Fault Breccia Zone
- SECTION ORIENTATION**
Looking EAST 090°
- QUARTZ STOCKWORK ZONES**
- T = Trace
 - V = Very Weak
 - W = Weak
 - M = Medium
 - S = Strong
 - I = Intense



24453

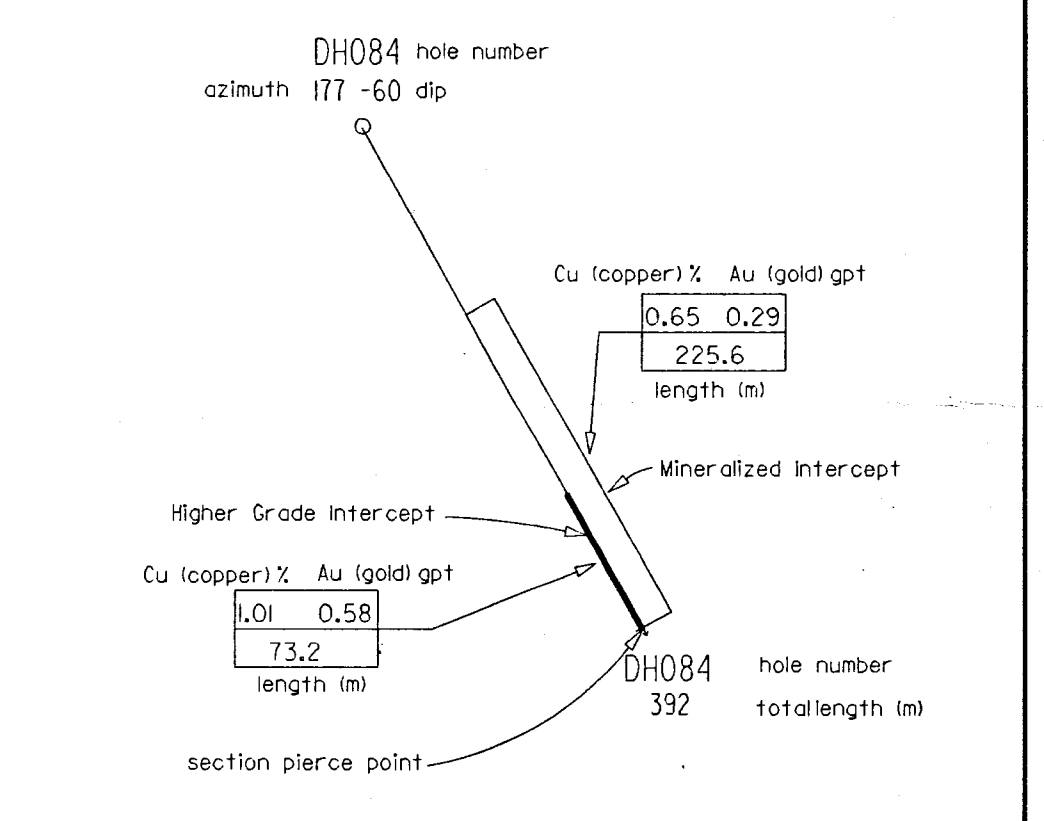


MINOREX CONSULTING LTD. GEOLOGICAL CONSULTANTS, DELTA, BRITISH COLUMBIA		
AMERICAN BULLION MINERALS LTD. VANCOUVER, BRITISH COLUMBIA		
DRILL SECTION 48550 E RED-CHRIS PROPERTY LIARD MINING DIVISION, BRITISH COLUMBIA, CANADA		
Date: April, 1996	Scale: 1:2000	Fig: 18
Drawn By: JDB/RWM	Files:	



LEGEND

- MIDDLE JURASSIC**
Bowser Lake Group
mJA Ashman Formation (LS11) - siltstone, sandstone, conglomerate
- EARLY JURASSIC**
Red Stock
DyKE Undivided late-stage dyke
DLAT Leucocratic aphanitic dyke
DAND Melanocratic aphanitic dyke
DMAF Pyroxene-biotite porphyry dyke
DOCA Quartz-carbonate amygdaloidal dyke
DPFH Feldspar-hornblende-biotite porphyry dyke
PBRX Intrusive Breccia - Undivided intrusive breccia
PBRM Intrusive Breccia - Late Phase fragments and matrix
PPHL Late Phase - Plagioclase-hornblende porphyry monzodiorite
PBRM Intrusive Breccia - Main Phase fragments and matrix
PPH2 Main Phase Type 2 - Main Phase monzodiorite dyke
PPHM Main Phase - Plagioclase-hornblende porphyry monzodiorite
- MIDDLE TO UPPER TRIASSIC**
Stuhini Group or Equivalent
muTvs Volcanic sandstone, siltstone (VSED)
muTva Dynamite Hill Volcanics (VOLCI) - augite phyrlic volcanic flow
- SYMBOLS**
Geologic Contact
Fault
Fault Breccia Zone
- SECTION ORIENTATION**
Looking EAST 090°
- QUARTZ STOCKWORK ZONES**
T = Trace
V = Very Weak
W = Weak
M = Medium
S = Strong
I = Intense

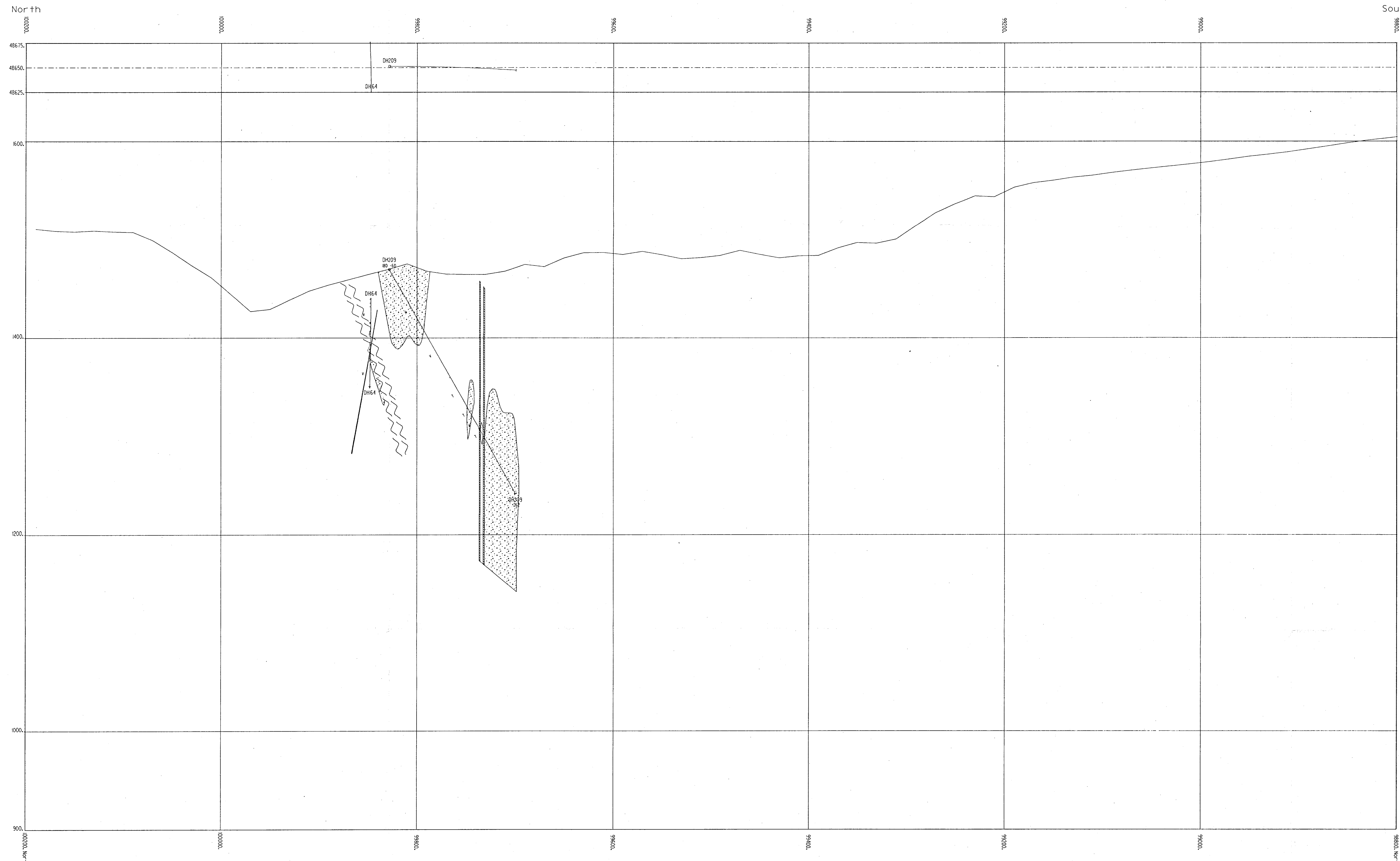


24453

Scale 1:2000
0 100 200 m
Metres

MINOREX CONSULTING LTD. GEOLOGICAL CONSULTANTS, DELTA, BRITISH COLUMBIA		
AMERICAN BULLION MINERALS LTD. VANCOUVER, BRITISH COLUMBIA		
DRILL SECTION 48600 E RED-CHRIS PROPERTY LIARD MINING DIVISION, BRITISH COLUMBIA, CANADA		
Date: April, 1996	Scale: 1:2000	Fig: 19
Drawn By: JDB/RWM	Files:	

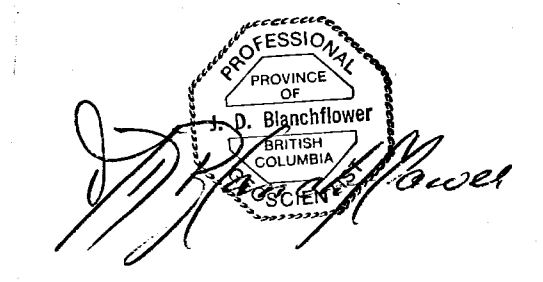
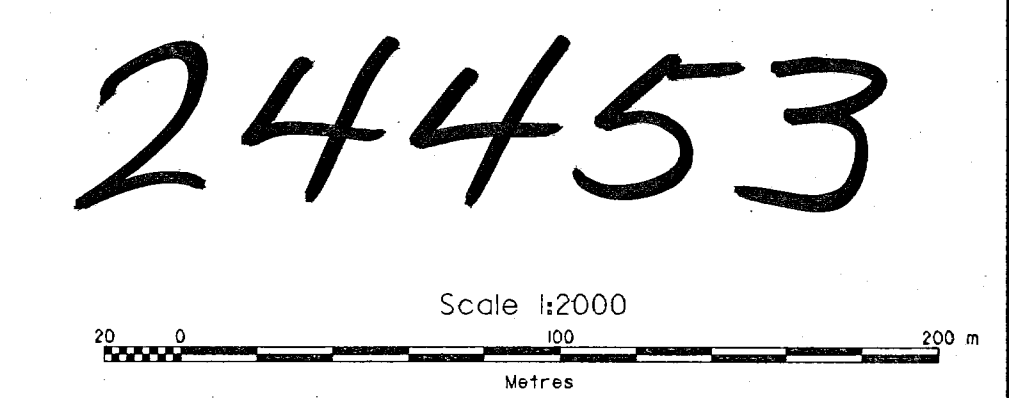
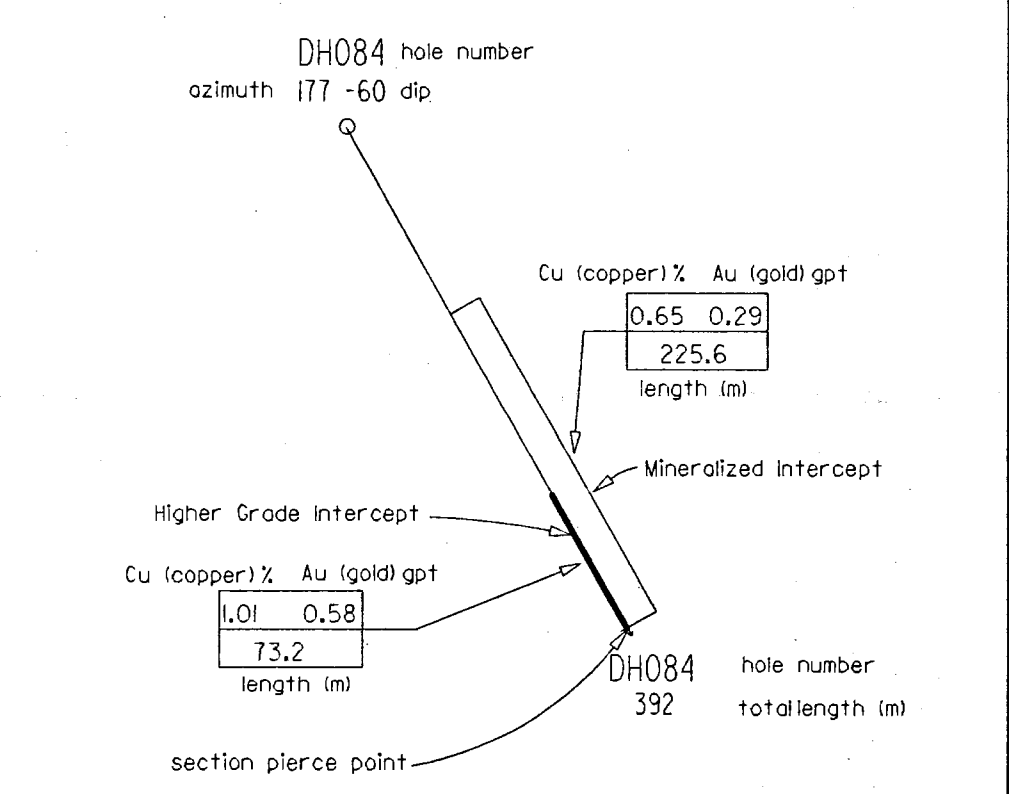
J.D. Blanchflower
PROFESSIONAL
GEOLOGIST



LEGEND

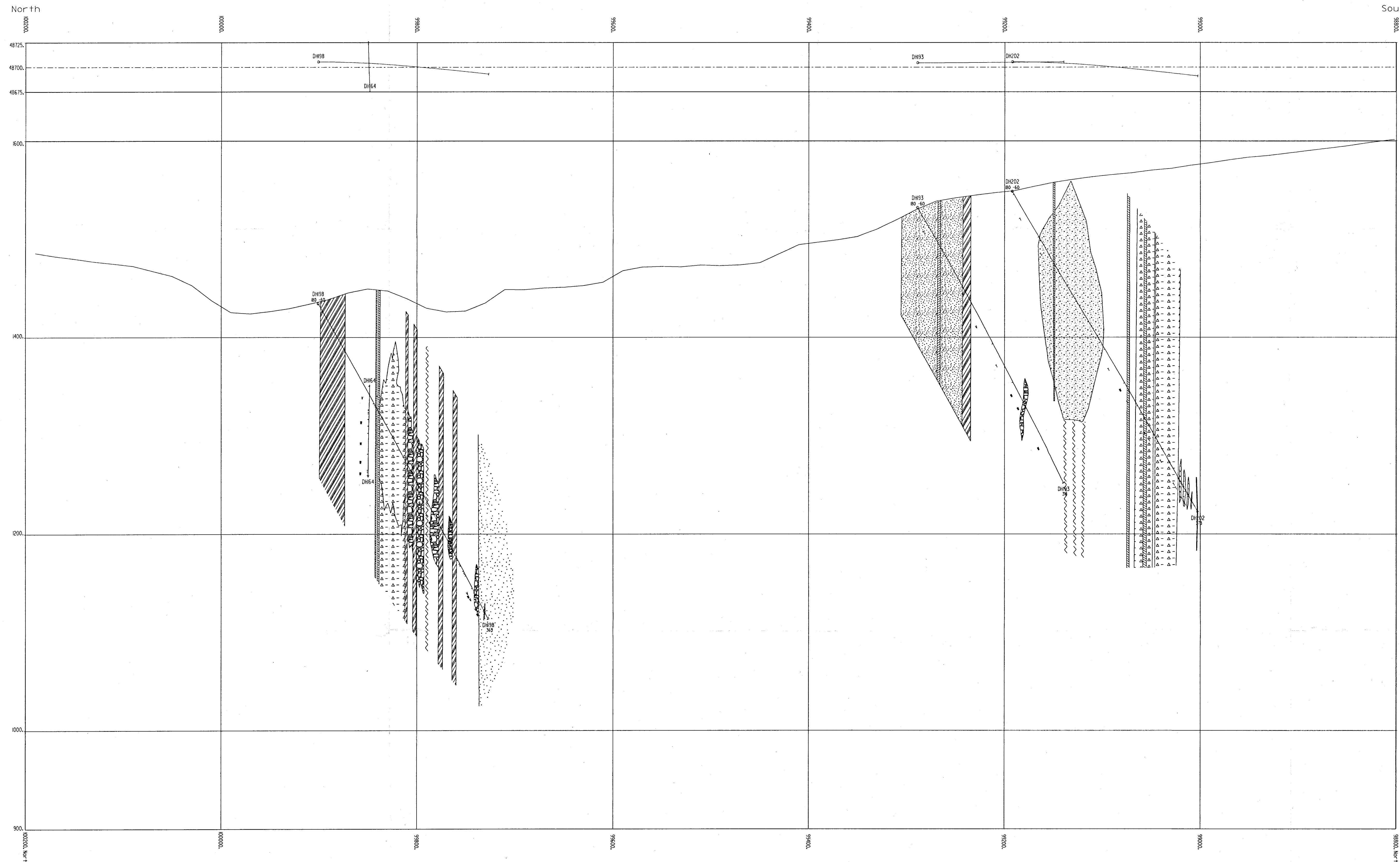
- MIDDLE JURASSIC**
Bowser Lake Group
 mJA Ashman Formation (LS1) - siltstone, sandstone, conglomerate
- EARLY JURASSIC**
Red Stock
- DIYE Undivided late-stage dyke
 - DLAT Leucocratic aphanitic dyke
 - DAND Melanocratic aphanitic dyke
 - DMAF Pyroxene-biotite porphyry dyke
 - DOCA Quartz-carbonate amygdaloidal dyke
 - DPFH Feldspar-hornblende-biotite porphyry dyke
 - PBRX Intrusive Breccia - Undivided intrusive breccia
 - PBRL Intrusive Breccia - Late Phase fragments and matrix
 - PHL Late Phase - Plagioclase-hornblende porphyry monzodiorite
 - PBRM Intrusive Breccia - Main Phase fragments and matrix
 - PPH2 Main Phase Type 2 - Main Phase monzodiorite dyke
 - PPHM Main Phase - Plagioclase-hornblende porphyry monzodiorite
- MIDDLE TO UPPER TRIASSIC**
Stuhini Group or Equivalent
- mu1vs Volcanic sandstone, siltstone (VSED)
 - mu1va Dynamite Hill Volcanics, (VOLD) - augite phyrlic volcanic flow

- SYMBOLS**
- Geologic Contact
 - Fault
 - Fault Breccia Zone
- SECTION ORIENTATION**
 Looking EAST 090°
- QUARTZ STOCKWORK ZONES**
- T = Trace
 - V = Very Weak
 - W = Weak
 - M = Medium
 - S = Strong
 - I = Intense



To Accompany Report By J.D. Blanchflower, P.Geo.

MINOREX CONSULTING LTD. GEOLOGICAL CONSULTANTS, DELTA, BRITISH COLUMBIA		
AMERICAN BULLION MINERALS LTD. VANCOUVER, BRITISH COLUMBIA		
DRILL SECTION 48650 E RED-CHRIS PROPERTY LIARD MINING DIVISION, BRITISH COLUMBIA, CANADA		
Date: April, 1996	Scale: 1:2000	Fig: 20
Drawn By: JDB/RMM	File:	



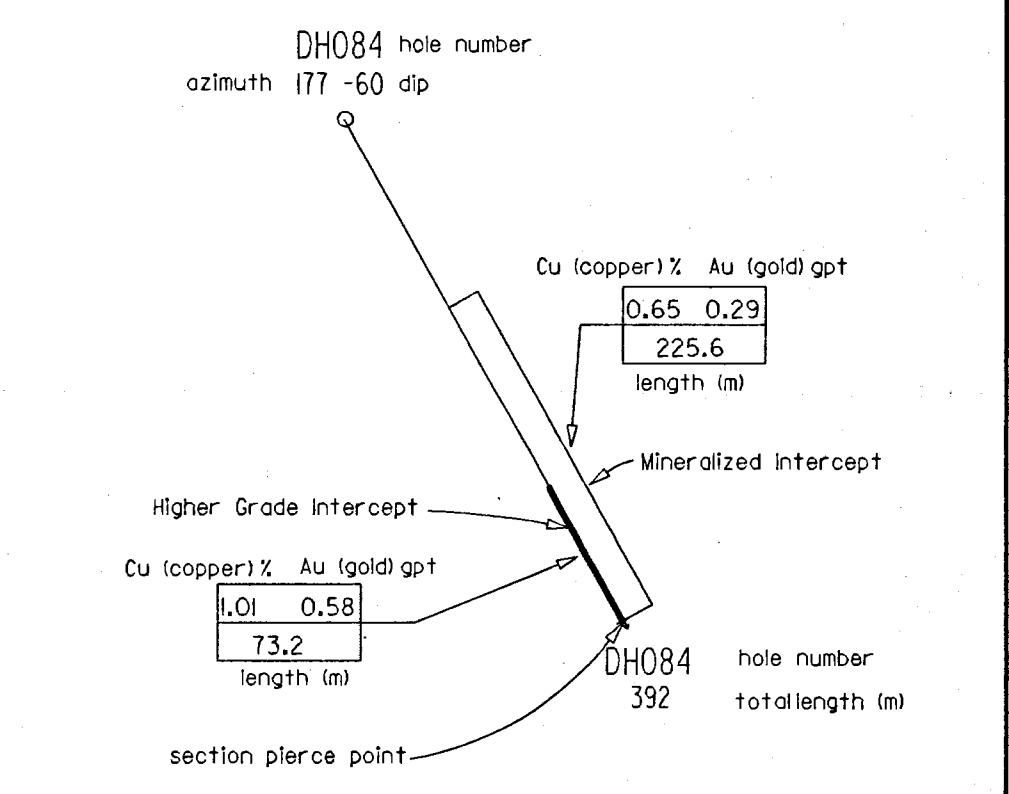
LEGEND

- MIDDLE JURASSIC
Bowser Lake Group
- mJA Ashman Formation (SLST) - siltstone, sandstone, conglomerate
- EARLY JURASSIC
Red Stock
- DIKE Undivided late-stage dyke
 - DLAT Leucocratic aphanitic dyke
 - DAND Melanocratic aphanitic dyke
 - DMAF Pyroxene-biotite porphyry dyke
 - DOCA Quartz-carbonate amygdaloidal dyke
 - DPFH Feldspar-hornblende-biotite porphyry dyke
 - PBRX Intrusive Breccia - Undivided intrusive breccia
 - PBRM Intrusive Breccia - Late Phase fragments and matrix
 - PPHL Late Phase - Plagioclase-hornblende porphyry monzodiorite
 - PBRM Intrusive Breccia - Main Phase fragments and matrix
 - PPH2 Main Phase Type 2 - Main Phase monzodiorite dyke
 - PPHM Main Phase - Plagioclase-hornblende porphyry monzodiorite

- MIDDLE TO UPPER TRIASSIC
Stuhini Group or Equivalent
- muTvs Volcanic sandstone, siltstone (VSD)
 - muTva Dynamite Hill Volcanics (VOLC) - augite phyric volcanic flow

- SYMBOLS
- Geologic Contact
 - Fault
 - Fault Breccia Zone
- SECTION ORIENTATION
Looking EAST 090°

- QUARTZ STOCKWORK ZONES
- T = Trace
 - V = Very Weak
 - W = Weak
 - M = Medium
 - S = Strong
 - I = Intense

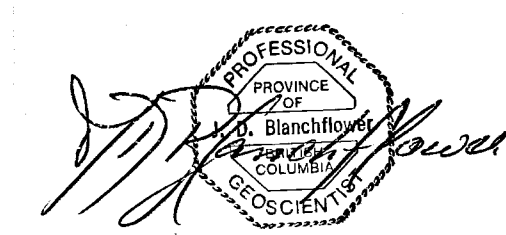


24453

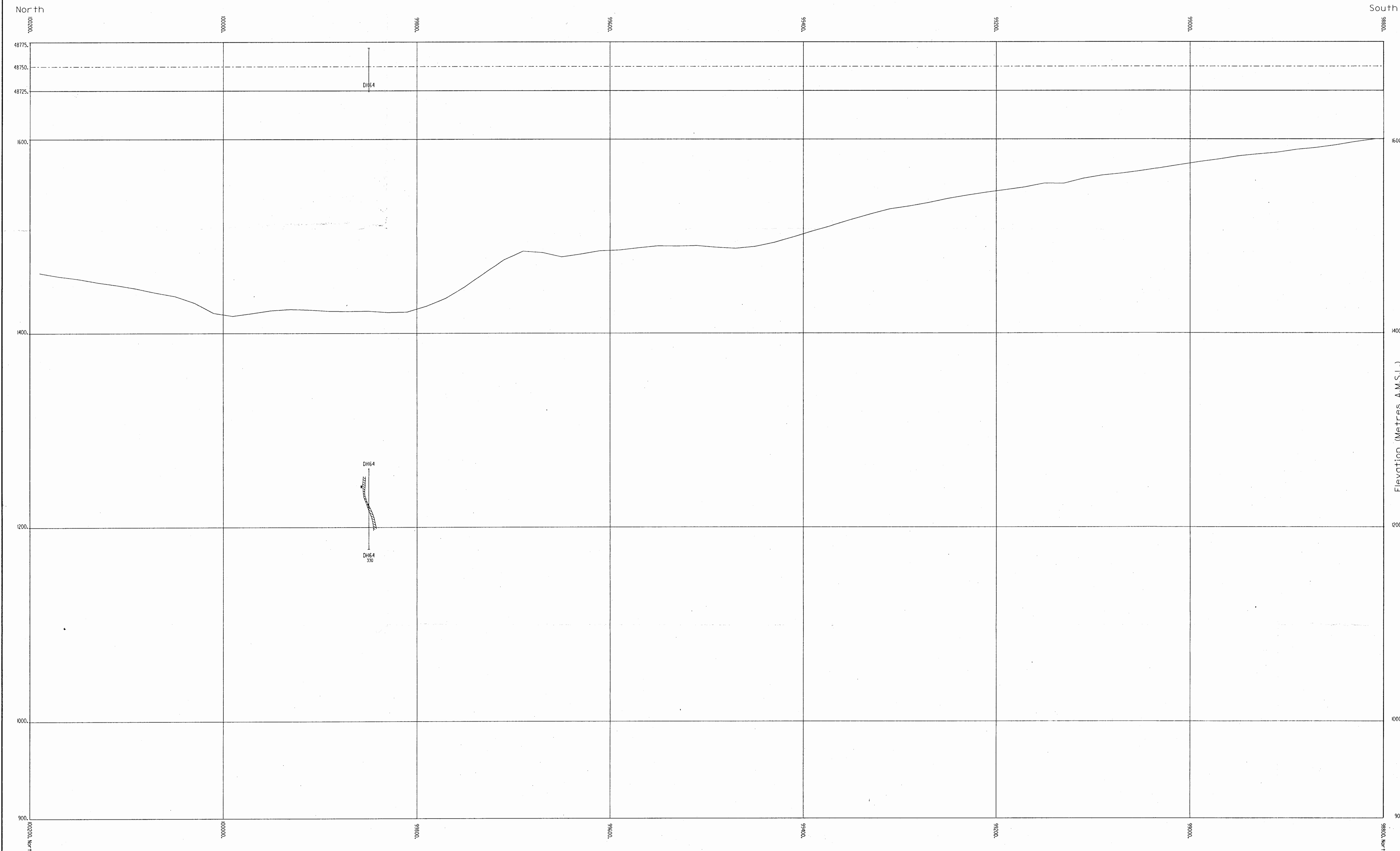
Scale 1:2000

0 100 200 m

MINOREX CONSULTING LTD. GEOLOGICAL CONSULTANTS, DELTA, BRITISH COLUMBIA		
AMERICAN BULLION MINERALS LTD. VANCOUVER, BRITISH COLUMBIA		
DRILL SECTION 48700 E RED-CHRIS PROPERTY LIARD MINING DIVISION, BRITISH COLUMBIA, CANADA		
Date: April, 1996	Scale: 1:2000	Fig: 21
Drawn By: JDB/RWM	Files:	



To Accompany Report By J.D. Blanchflower, P.Eng.



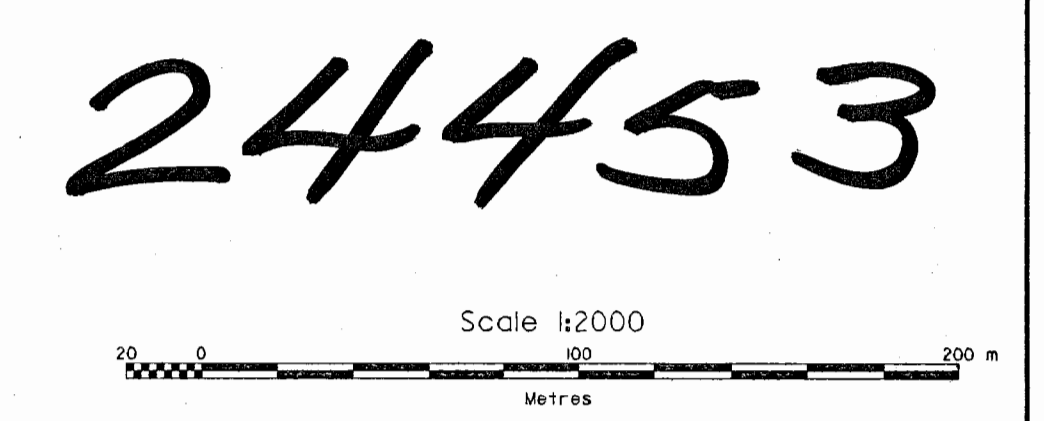
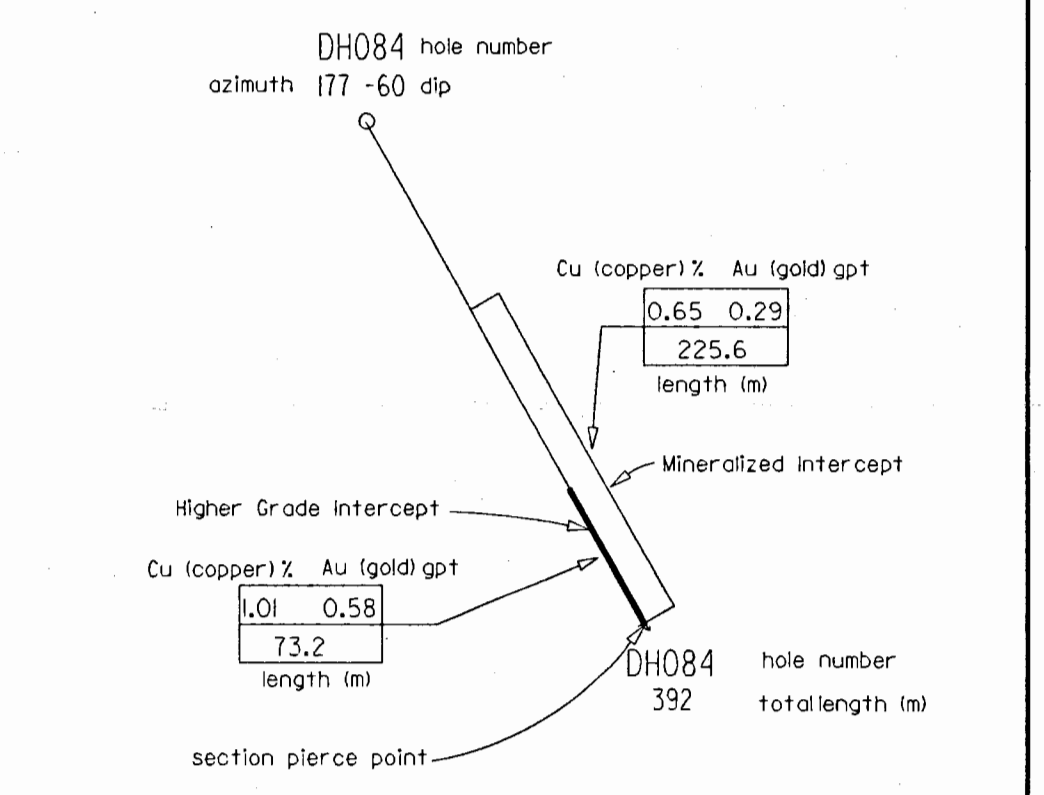
LEGEND

- MIDDLE JURASSIC**
Bowser Lake Group
- muA Ashman Formation (SLS1) - siltstone, sandstone, conglomerate
- EARLY JURASSIC**
Red Stock
- DYKE Undivided late-stage dyke
 - DLAT Leucocratic aphanitic dyke
 - DAND Melanocratic aphanitic dyke
 - DMAF Pyroxene-biotite porphyry dyke
 - DOCA Quartz-carbonate amygdaloidal dyke
 - DPFH Feldspar-hornblende-biotite porphyry dyke
 - PBRX Intrusive Breccia - Undivided intrusive breccia
 - PBRL Intrusive Breccia - Late Phase fragments and matrix
 - PPHL Late Phase - Plagioclase-hornblende porphyry monzodiorite
 - PBRM Intrusive Breccia - Main Phase fragments and matrix
 - PPH2 Main Phase Type 2 - Main Phase monzodiorite dyke
 - PPHM Main Phase - Plagioclase-hornblende porphyry monzodiorite

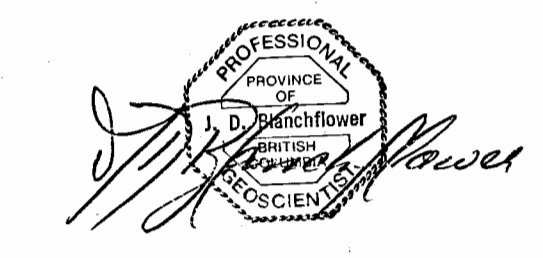
- MIDDLE TO UPPER TRIASSIC**
Stuhini Group or Equivalent
- muTvs Volcanic sandstone, siltstone (VSED)
 - muTva Dynamite Hill Volcanics (VOLD) - augite phyric volcanic flow

- SYMBOLS**
- Geologic Contact
 - Fault
 - Fault Breccia Zone

- QUARTZ STOCKWORK ZONES**
- T = Trace
 - V = Very Weak
 - W = Weak
 - M = Medium
 - S = Strong
 - I = Intense



MINOREX CONSULTING LTD. GEOLOGICAL CONSULTANTS, DELTA, BRITISH COLUMBIA		
AMERICAN BULLION MINERALS LTD. VANCOUVER, BRITISH COLUMBIA		
DRILL SECTION 48750 E RED-CHRIS PROPERTY LIARD MINING DIVISION, BRITISH COLUMBIA, CANADA		
Date: Apr 11, 1996	Scale: 1:2000	Fig: 22
Drawn By: JDB/RJM	File:	



To Accompany Report By J.D. Blanchflower, P. Geo.