

GEOLOGICAL SURVEY BRANCH  
ASSESSMENT REPORTS

DATE RECEIVED  
JUL 23 1996

GEOPHYSICAL REPORT  
SUN 1-16 and GAS 1-16 Mineral Claims  
Fort Steele Mining Division  
NTS:82G/4W  
(Lat.49° 15', LONG. 115° ,50')

Work For:Sedex Mining Corp.and Abitibi Mining  
Corp.(owner / operator)  
1000 - 675 W.Hastings St.  
Vancouver, B.C. V6B 1N2

Report By:G.Rodgers,P.Eng.  
P.O.Box 63, Skookumchuck, B.C. V0B 2E0

July, 1996

FILMED

GEOLOGICAL SURVEY BRANCH  
ASSESSMENT REPORT

24,478

(i)

summary

Approximately 650 magnetometer and VLF readings were taken on the Sun and Gas claims within three areas. Only two significant anomalies were observed one of which is explained by a geological contact with a mineralized bed, the other warrants further investigation.

TABLE OF CONTENTS

1.0 INTRODUCTION	Page
Location & Access. . . . .	1
History . . . . .	1
Work Done . . . . .	1
Claim Status . . . . .	1
Location Map (Fig.1)	2
Index Map (Fig.2)	3
Claim Map (Fig.3)	4
2.0 GEOPHYSICAL SURVEY	5
3.0 INTERPRETATION AND EVALUATION	6
Fig.4, Grid A (1:10,000 location map)	7
Fig.5, Grid A Profiles (in pocket)	
Fig.6, Grid B (1:10,000 location map)	8
Fig.7, Grid B Profiles (in pocket)	
Fig.8, Area C (1:10,000 location map)	9
Fig.9, Area C VLF Profiles	10
Statement of Qualifications	11
Statement of Costs	12
Appendix I (Raw Data	13

1.1 INTRODUCTIONLocation and access

The claims are located approximately 30km south of Cranbrook, B.C., south of highway #3. A good gravel road leads (5km) to the claims from the south end of Moyie Lake which is called Sundown Creek Road.

History

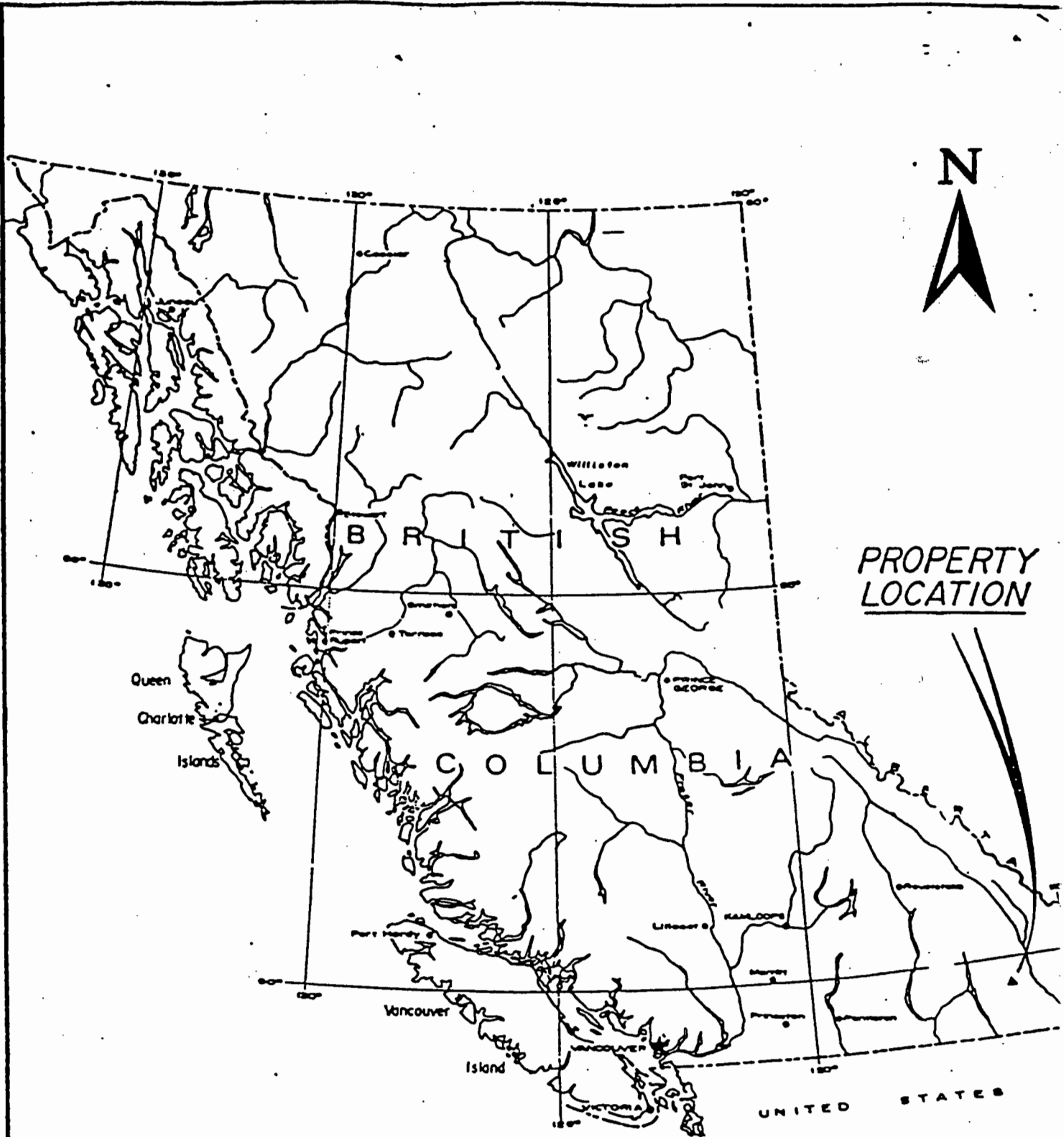
The property has no known history and is mostly overburden covered. The property hosts tourmalinite and other Sullivan type indicators. The Sun 1-16 claims are owned 100% by Sedex Mining Corp. and the Gas 1-16 claims are owned 100% by Abitibi Mining Corp. Sedex Mining Corp. was the operator.

Work Done

Approximately 16 line kilometers of VLF and Magnetometer surveying were done during April, 1996. Approximately 20 line kilometers of marked line were established upon which to take the geophysical readings and also to take geochemical soil samples.

Claim Status

<u>claim name</u>	<u>record #</u>	<u>Expiry date</u>	<u># of units</u>
Sun 1	335445	Apr.23,1996	1
" 2	335446	" "	1
" 3	335447	" "	1
" 4	335448	" "	1
" 5	335449	" "	1
" 6	335450	" "	1
" 7	335451	" "	1
" 8	335452	" "	1
" 9	337434	Jul.6,1996	1
" 10	337435	" "	1
" 11	337436	" "	1
" 12	337437	" "	1
" 13	337438	" "	1
" 14	337439	" "	1
" 15	337449	" "	1
" 16	337450	" "	1
Gas 1	339991	Sept.7,1996	1
" 2	339992	" "	1
" 3	339993	" "	1
" 4	339994	" "	1
" 5	339995	" "	1
" 6	339996	" "	1
" 7	339997	" "	1
" 8	339998	" "	1
" 9	339999	" "	1
" 10	340000	" "	1
" 11	340001	" "	1
" 12	340002	" "	1
" 13	340003	" "	1
" 14	340004	" "	1
" 15	340005	" "	1
" 16	340006	" "	1

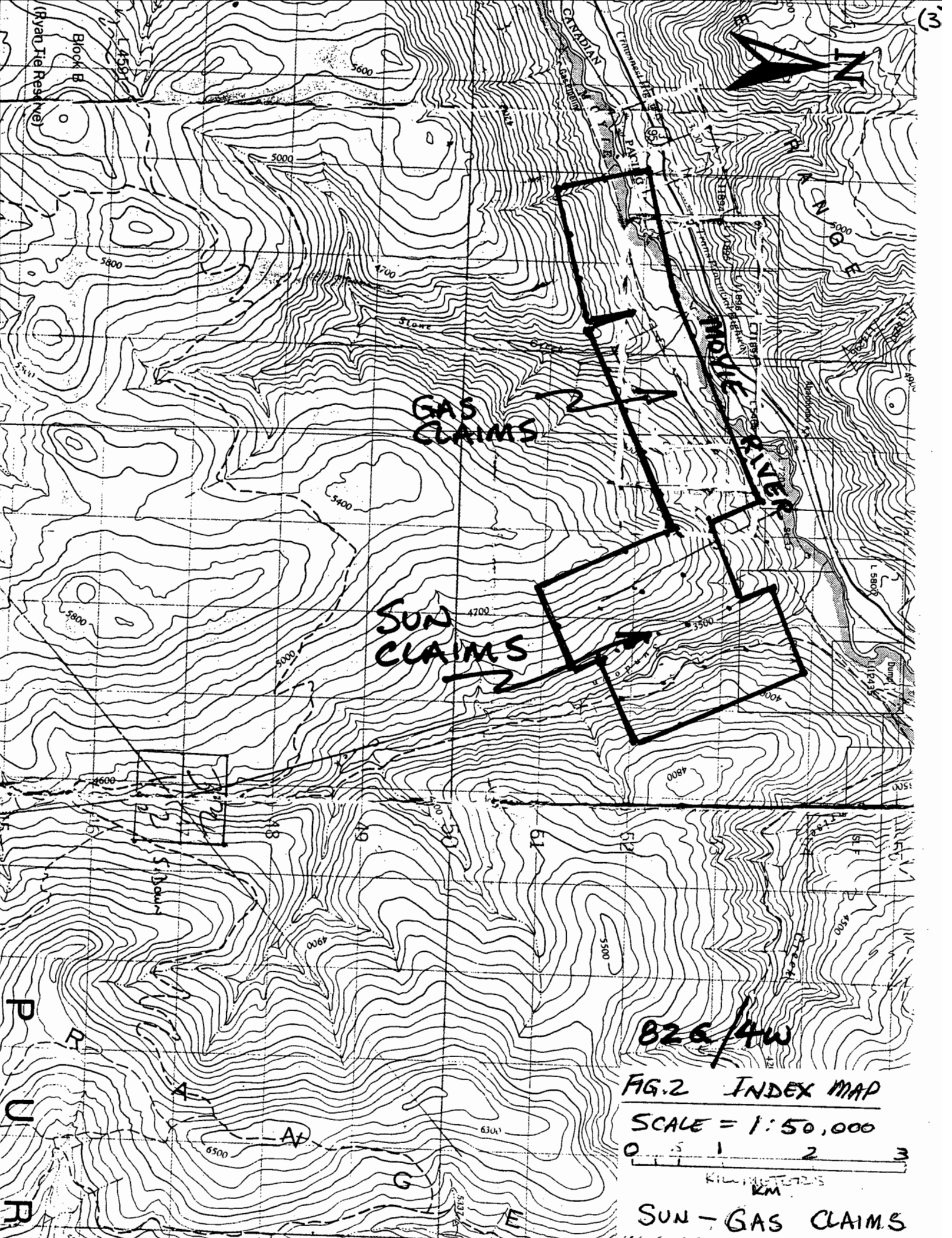


PROPERTY LOCATION

Figure 1

# LOCATION MAP

SCALE  
Km. 100 50 0 100 200 300 400 Ki.



GAS CLAIMS

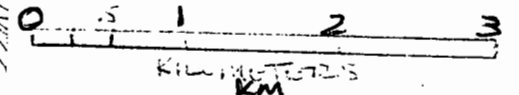
SUN CLAIMS

MOIVE RIVER

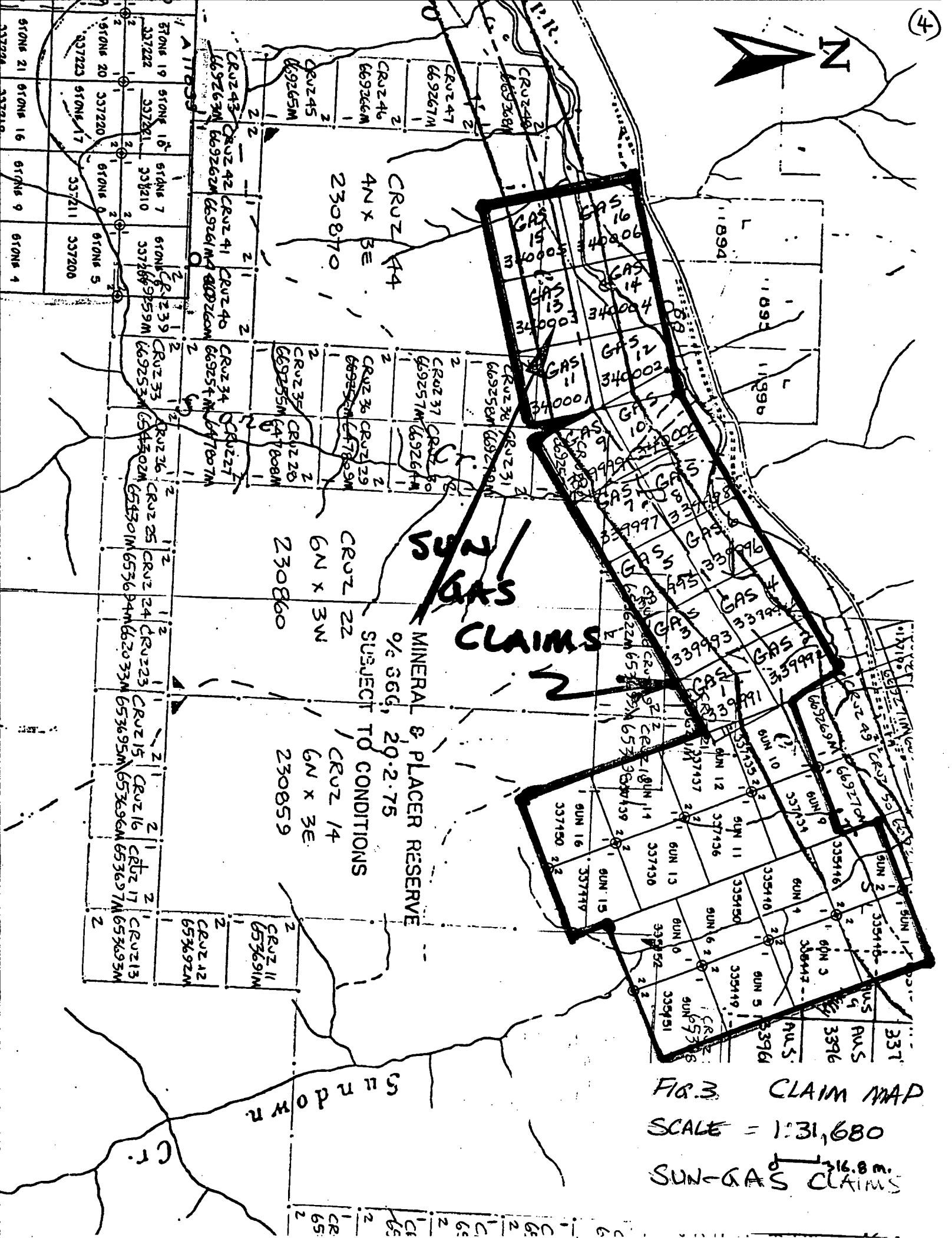
826/4W

FIG. 2 INDEX MAP

SCALE = 1:50,000



SUN - GAS CLAIMS



CRUZ 44  
4N X 3E  
230870

CRUZ 22  
6N X 3W  
230860

CRUZ 14  
6N X 3E  
230859

MINERAL & PLACER RESERVE  
% 66.6, 20.2-75  
SUBJECT TO CONDITIONS

FIG. 3 CLAIM MAP  
SCALE = 1:31,680  
SUN-GAS CLAIMS

STANDARD

Cr.

## 2.0 GEOPHYSICAL SURVEYING

Approximately 650 readings were taken on the claims each of magnetometer and VLF along approximately 16 line kilometers of grid lines and road every 25 meters.

The instrument used was a GSM-19 Overhauser magnetometer with 0.2nT accuracy. As well, a GSM-19 VLF instrument was used to measure vertical and horizontal components of total field from two VLF stations simultaneously to within 0.1% accuracy. Only In-phase and Out-of-phase percentages of vertical component were recorded.

For work done on the Sun-Gas claims this year, no diurnal corrections were made to magnetometer data as each project area was small, not connected to each other and there appeared not to be significant drift in the magnetometer readings when duplicate station readings were taken over a 2-4 hour period.

The magnetometer readings recorded represent total magnetic field as measured in Nano Tesla's with respect to a datum of 58,000nT. The VLF measurements used for plotting represent percentage of vertical and horizontal components of total field as well as field strength measured in Pico Tesla's. The Stations used were either Cutler, USA (24.0KHz) or Seattle, USA (24.8KHz).

### 3.0 INTERPRETATION AND EVALUATION

The area is mostly overburden covered but is underlain by the Proterozoic Aldridge Formation which consists of thin-medium beds of graded quartzitic wacke and sub-wacke with intercalated laminated argillites up to several meters thick. Pyrrhotite flecks commonly occur at the bases of graded beds.

#### Area 'A'

The only anomaly of significance in this area occurs on line 4650E at 4850N. As this anomaly occurs where the line crosses the road it is suspect (buried metal?). (see fig.4&5)

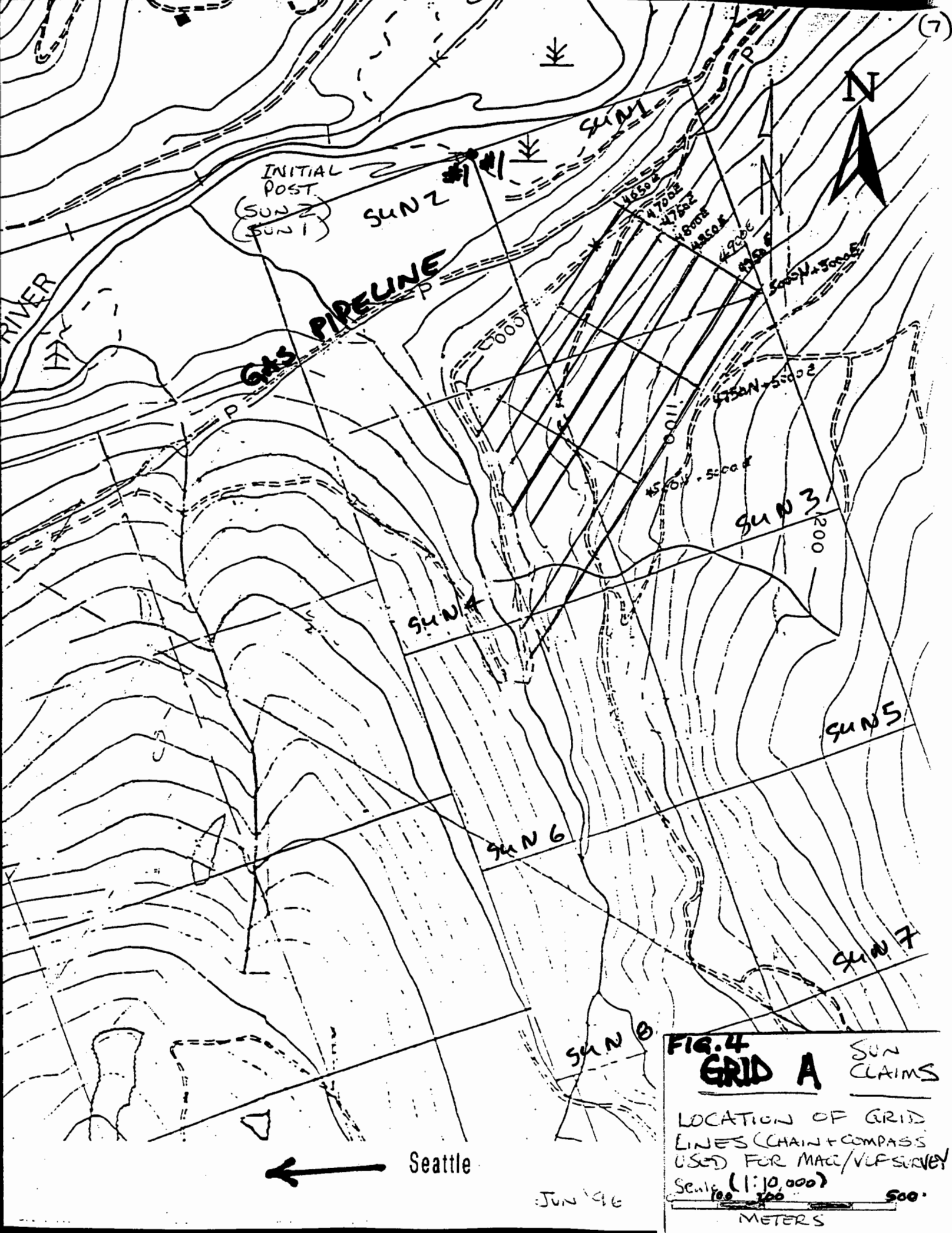
#### AREA 'B'

Small to medium anomalies occur at L2150E, 2200n & L2050, 2160N. These anomalies mark the geological contact from normal middle Aldridge sediments to the south and a thick vented sand bed that can be seen in road-cuts and that visually contains up to 2% combined Pb & Zn. Small, insignificant anomalies occur in several places and some of which are attributed to buried culverts. (see fig.6&7)

#### AREA "C"

Magnetometer readings were not plotted in profile as results were spurious due to the many culverts along the road traverse. VLF results indicate a number of weak conductors reflecting underlying road culverts and one moderate to strong anomaly at 3660E, 2000N which is as yet unexplained. This anomaly is in the vicinity of a significant Pb & Zn soil geochem anomaly located uphill and should be further investigated. (see fig.8&9).



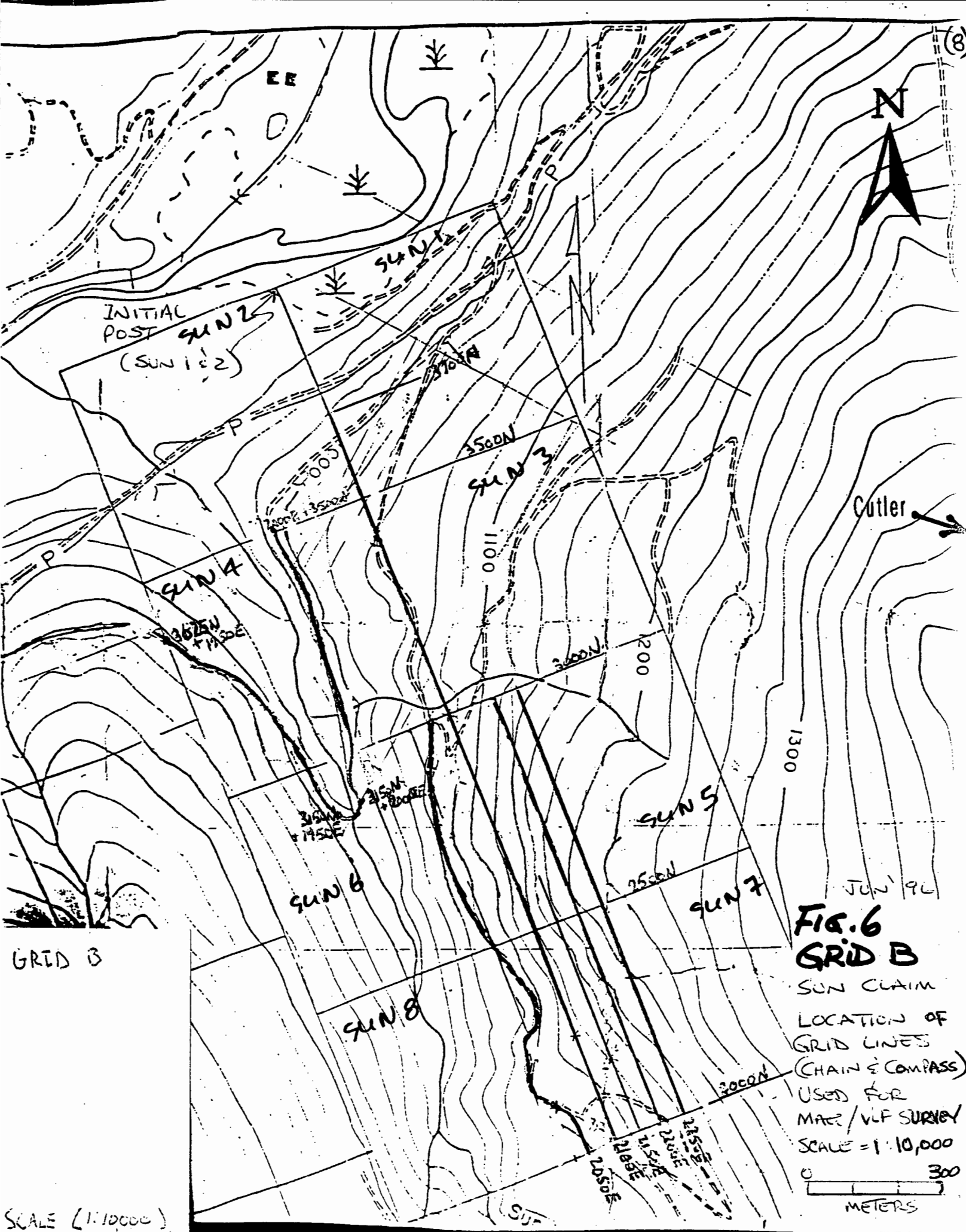


**FIG. 4**  
**GRID A** SUN CLAIMS

LOCATION OF GRID  
 LINES (CHAIN + COMPASS  
 USED FOR MAG/VLP SURVEY  
 Scale (1:10,000)  
 100 200 500  
 METERS

JUN '96

Seattle

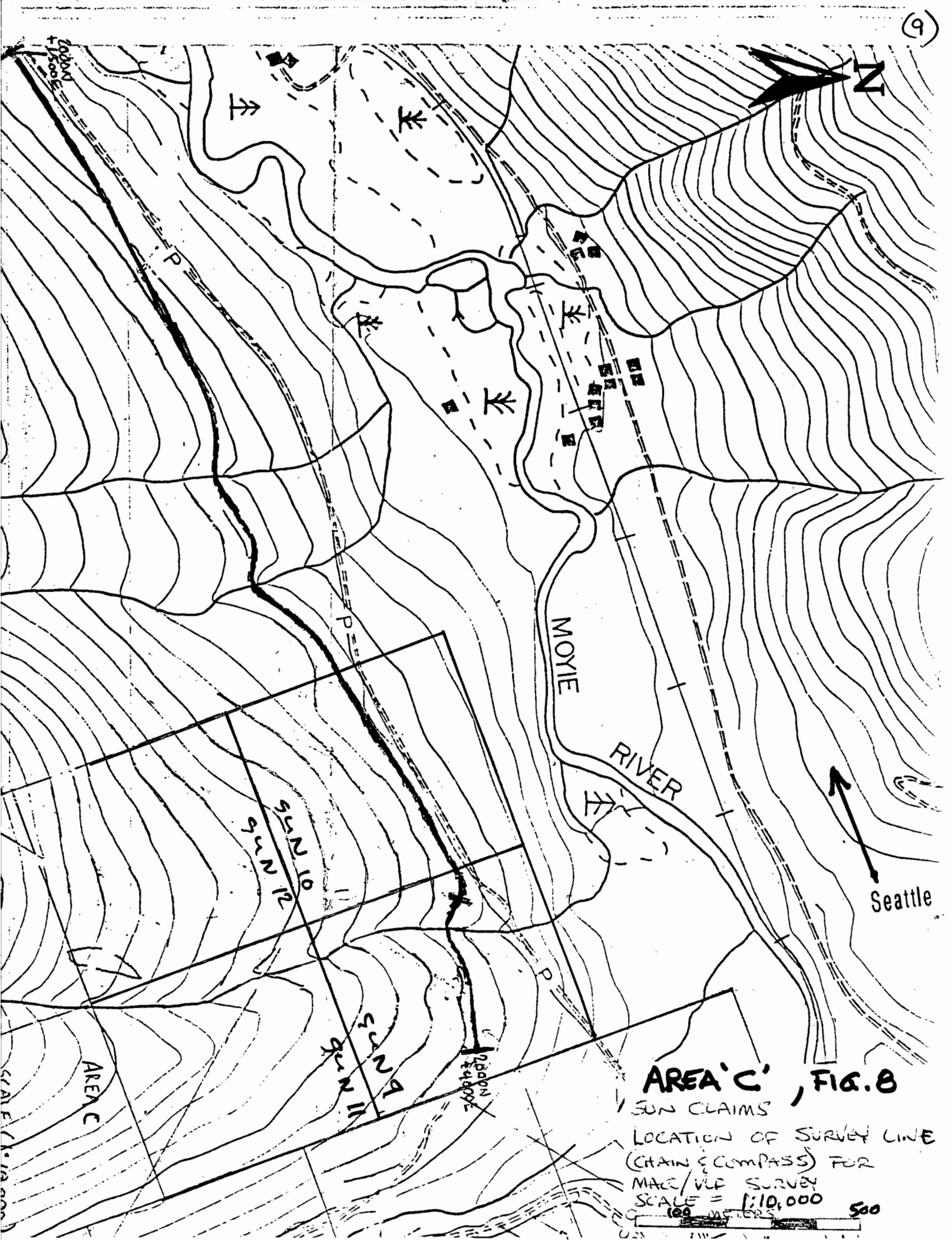


GRID B

SCALE (1:10,000)

**FIG. 6  
GRID B**

SUN CLAIM  
 LOCATION OF  
 GRID LINES  
 (CHAIN & COMPASS)  
 USED FOR  
 MAGE/VLF SURVEY  
 SCALE = 1:10,000  
 0 300  
 METERS

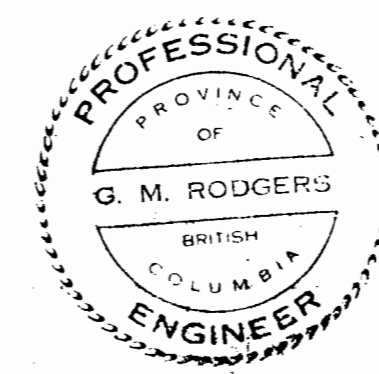
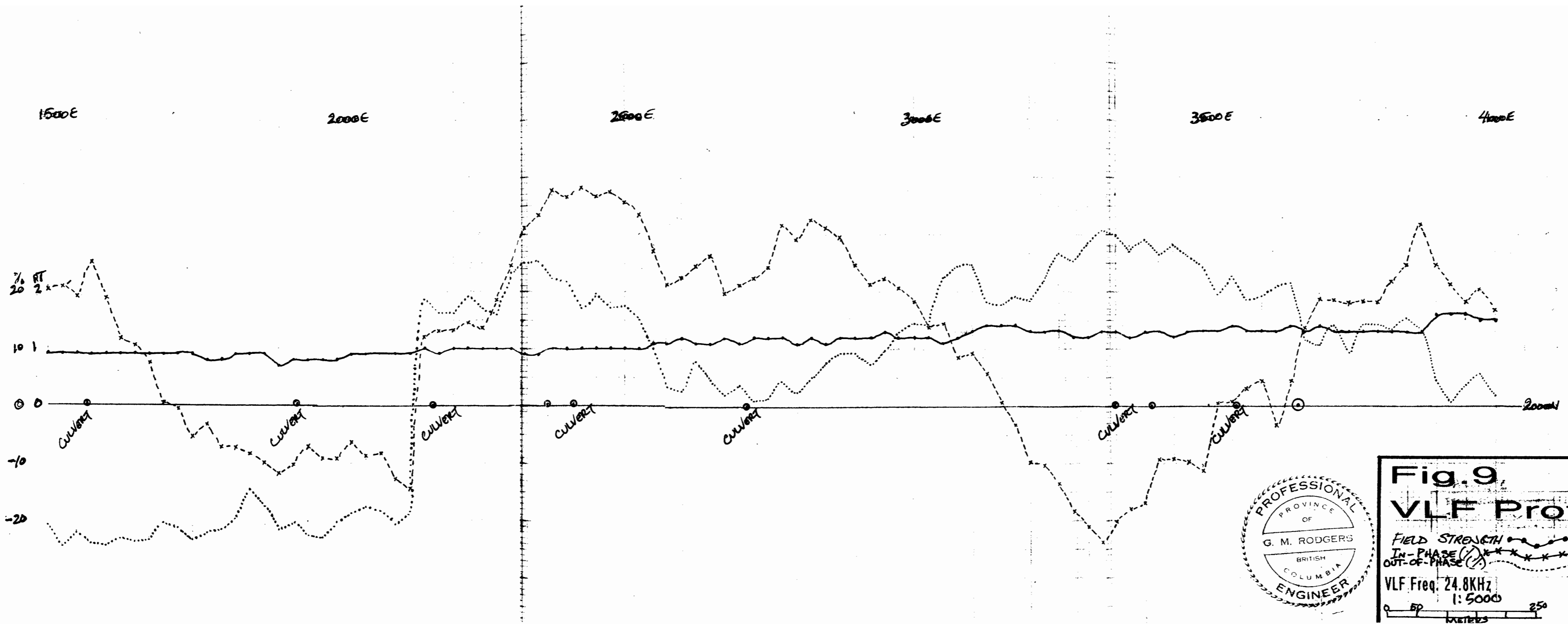


**AREA 'C', FIG. 8**

SUN CLAIMS  
 LOCATION OF SURVEY LINE  
 (CHAIN & COMPASS) FOR  
 MAC/VLP SURVEY  
 SCALE = 1:10,000  
 100 METERS 500

AREA C

SCALE 1:10,000



**Fig. 9**  
**VLF Profiles**

FIELD STRENGTH ———  
IN-PHASE (x) ———  
OUT-OF-PHASE (o) ———

VLF Freq. 24.8KHz  
1:5000

ANOMALIES:  
o SMALL  
o MED.

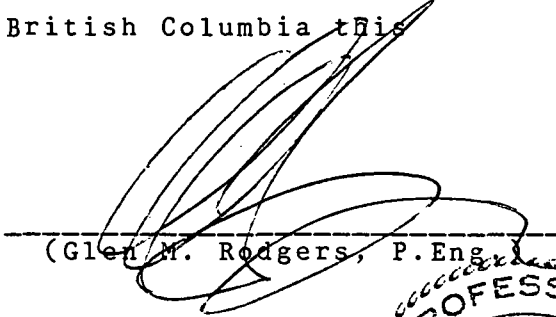
0 50 250 METERS

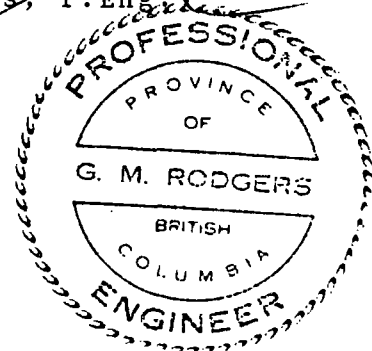
STATEMENT of QUALIFICATIONS

I, Glen M. Rodgers of Skookumchuck, B.C., hereby certify as follows:

1. I am a consulting Geological Engineer presently registered with the Association of Professional Engineers and Geoscientists of British Columbia.
2. I graduated from the University of Manitoba in 1977 with a bachelor's degree in Geological Engineering.
3. Since graduation, I have practised my profession continuously in Western Canada, Yukon Territory, Alaska and Central America working primarily in the field of mineral exploration.
4. I have based this report on work done by Tom, Mike and Craig Kennedy on the Sun & Gas claims, under my supervision during June of 1996.
5. I do not expect to receive any shares in Sedex Mining Corp. as a result of writing this report.

Dated at Cranbrook, British Columbia this  
July 20,,1996.

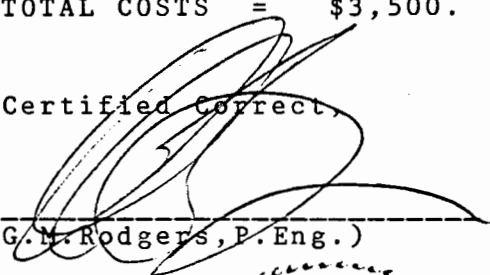
  
\_\_\_\_\_  
(Glen M. Rodgers, P. Eng.)

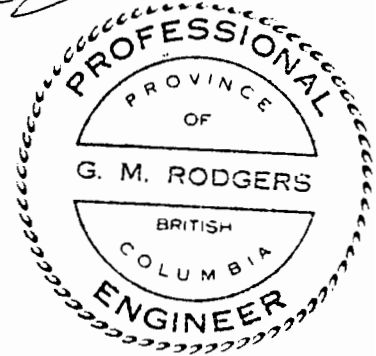


STATEMENT OF COSTS

MAG/VLF rental (5 days @ \$100./day) . . . . .	\$ 500.
Mike Kennedy, Tom Kennedy and Craig Kennedy (5 days @ \$500./day) (grid emplacement and instrument readings . . . . .)	\$2,500.
4*4 truck (5 days @ \$60./day) . . . . .	\$ 300.
G.Rodgers (Supervision / report) . . . . .	<u>\$ 200.</u>
TOTAL COSTS =	\$3,500.

-Certified Correct,

  
-----  
(G.M. Rodgers, P. Eng.)



APPENDIX I

# RAW DATA

Line	Station	Magnetometer Reading (uncorrected)	VLF Stn.	In phase %	Out of phase %	Field Strength	VLF Stn.	In phase%	Out of phase %		
3000	0800	0800	3000	57249	24.0	-004.8	+000.0	001.1	24.8	-006.7	+001
.0	016.0	Field Strength									
2975	0800	0800	2975	57245	24.0	-000.8	+001.6	001.0	24.8	-002.2	+002
.5	015.7										
2950	0800	0800	2950	57243	24.0	-002.9	+002.0	001.0	24.8	-003.7	+002
.8	014.9										
2925	0800	0800	2925	57244	24.0	-005.9	+001.5	001.0	24.8	-006.7	+001
.1	014.7										
2900	0800	0800	2900	57243	24.0	-006.6	+001.8	000.9	24.8	-008.4	+001
.5	014.2										
2875	0800	0800	2875	57241	24.0	-009.2	-000.8	001.0	24.8	-010.7	+000
.5	014.7										
2850	0800	0800	2850	57244	24.0	-007.4	-000.5	001.0	24.8	-010.7	+001
.7	014.5										
2825	0800	0800	2825	57246	24.0	-010.1	+000.5	000.9	24.8	-011.2	+003
.9	014.9										
2800	0800	0800	2800	57241	24.0	-009.3	+005.1	001.0	24.8	-010.0	+005
.0	015.4										
2775	0800	0800	2775	57245	24.0	-008.1	+003.7	001.0	24.8	-012.0	+006
.5	014.7										
2750	0800	0800	2750	57241	24.0	-008.3	+003.5	001.0	24.8	-012.1	+004
.8	015.3										
2725	0800	0800	2725	57244	24.0	-009.0	+002.5	001.0	24.8	-010.4	+003
.7	016.1										
2700	0800	0800	2700	57243	24.0	-006.2	+002.3	001.0	24.8	-009.9	+003
.8	015.6										
2675	0800	0800	2675	57245	24.0	-008.5	+003.7	001.0	24.8	-010.2	+001
.1	015.7										
2650	0800	0800	2650	57248	24.0	-005.5	-004.0	001.1	24.8	-009.4	-000
.9	016.1										
2625	0800	0800	2625	57249	24.0	-002.3	-003.5	001.1	24.8	-004.4	-002
.4	015.9										
2600	0800	0800	2600	57245	24.0	-000.6	-005.4	001.1	24.8	+000.3	-004
.7	017.1										
2575	0800	0800	2575	57243	24.0	+006.0	-005.9	001.1	24.8	+005.4	-004
.9	016.8										
2550	0800	0800	2550	57247	24.0	+006.9	-001.9	001.0	24.8	+007.2	-003
.6	015.4										
2525	0800	0800	2525	57240	24.0	+005.0	-002.9	000.9	24.8	+005.4	-003
.3	014.4										
2500	0800	0800	2500	57243	24.0	+001.9	-003.8	000.9	24.8	+002.0	-001
.5	014.2										
2475	0800	0800	2475	57240	24.0	-001.0	-003.9	000.9	24.8	-001.5	-001
.6	014.1										
2450	0800	0800	2450	57236	24.0	-002.6	-003.4	000.9	24.8	-004.2	-001
.8	012.7										
2425	0800	0800	2425	57111	24.0	-008.7	+002.1	000.9	24.8	-009.2	-002
.1	013.1										
2400	0800	0800	2400	57188	24.0	-010.8	-001.9	000.9	24.8	-011.8	-003
.0	012.9										
2375	0800	0800	2375	57243	24.0	-014.0	-002.8	000.8	24.8	-014.9	-003
.3	013.6										
2350	0800	0800	2350	57243	24.0	-012.5	-005.2	000.8	24.8	-019.4	-003



2325	0800	0800	2325	57245	24.0	-019.1	-002.0	000.9	24.8	-022.7	-002
.3	013.3										
2300	0800	0800	2300	57240	24.0	-023.9	-006.0	000.8	24.8	-027.1	-003
.2	013.4										
2275	0800	0800	2275	57241	24.0	-020.6	-001.4	000.9	24.8	-024.3	-000
.6	014.2										
2250	0800	0800	2250	57243	24.0	-021.9	-001.9	000.9	24.8	-027.8	-001
.4	013.7										
2225	0800	0800	2225	57236	24.0	-022.6	-000.2	000.9	24.8	-025.5	+000
.0	015.1										
2200	0800	0800	2200	57238	24.0	-017.0	-003.0	001.0	24.8	-018.0	+001
.0	015.0										
2175	0800	0800	2175	57237	24.0	-011.9	+000.6	001.1	24.8	-014.4	+000
.1	015.5										
2150	0800	0800	2150	57243	24.0	-008.7	+001.4	001.0	24.8	-009.7	+001
.5	015.4										
2000	1000	1000	2000	57210	24.0	+029.9	-004.4	001.1	24.8	+031.4	-004
.7 -	013.5										
2025	1000	1000	2025	57212	24.0-	+033.1-	-004.1 -	000.9-	24.8-	+036.9-	-006
.1	012.2										
2050	1000	1000	2050	57214	24.0-	+024.5-	-003.1 -	001.0-	24.8-	+028.7-	-004
.6 -	012.3										
2075	1000	1000	2075	57216	24.0	+023.9	-004.4	001.0	24.8	+024.2	-004
.4	012.4										
2100	1000	1000	2100	57220	24.0	+021.0	+000.1	001.0	24.8	+023.2	-002
.7	012.7										
2125	1000	1000	2125	57219	24.0	+018.7	-004.1	001.0	24.8	+019.0	-003
.2	012.7										
2150	1000	1000	2150	57220	24.0	+015.6	-002.4	001.0	24.8	+016.8	-004
.7	013.0										
2175	1000	1000	2175	57220	24.0	+016.8	-008.0	001.0	24.8	+017.8	-006
.9	012.6										
2200	1000	1000	2200	57224	24.0-	+015.6-	-003.5 -	001.0-	24.8-	+015.2-	-006
.6	012.2										
2225	1000	1000	2225	57227	24.0	+010.1	-007.0	000.9	24.8	+008.5	-008
.3	012.8										
2250	1000	1000	2250	57226	24.0	+002.5	-011.1	001.0	24.8	+000.1	-009
.4	013.2										
2275	1000	1000	2275	57226	24.0	+003.0	-010.4	001.1	24.8	+003.1	-012
.0	014.9										
2300	1000	1000	2300	57230	24.0	+008.0	-010.1	001.2	24.8	+007.1	-012
.8	015.6										
2325	1000	1000	2325	57227	24.0	+019.0	-014.1	001.2	24.8	+020.9	-015
.4	016.7										
2350	1000	1000	2350	57231	24.0	+025.5	-016.1	001.1	24.8	+027.8	-019
.3	015.3										
2375	1000	1000	2375	57258	24.0	+033.5	-013.5	001.1	24.8	+035.3	-016
.0	014.6										
2400	1000	1000	2400	57230	24.0	+032.1	-004.4	000.9	24.8	+036.4	-008
.8	013.4										
2425	1000	1000	2425	57209	24.0	+028.4	-005.4	000.9	24.8	+031.3	-009
.5	012.8										
2450	1000	1000	2450	57233	24.0	+024.5	-004.3	000.9	24.8	+026.3	-008
.4	012.9										
2475	1000	1000	2475	57234	24.0	+020.0	-001.4	001.0	24.8	+023.0	-004
.7	013.4										
2500	1000	1000	2500	57242	24.0	+017.2	+000.4	000.9	24.8	+022.1	-003
.2	013.1										
2525	1000	1000	2525	57237	24.0	+016.7	+003.4	000.9	24.8	+019.8	-002
.0	013.2										
2550	1000	1000	2550	57235	24.0	+017.4	+002.7	001.0	24.8	+019.4	-001
.0	013.8										
2575	1000	1000	2575	57235	24.0	+016.4	+004.6	001.0	24.8	+021.9	+000
.0	013.0										
2600	1000	1000	2600	57235	24.0	+017.0	+002.8	000.9	24.8	+020.1	+001

2625	1000	1000	2625	57234	24.0	+010.4	+004.3	000.9	24.8	+015.3	+002
.4	013.2										
2650	1000	1000	2650	57235	24.0	+008.4	+004.6	000.9	24.8	+013.9	+002
.7	- 012.9										
2675	1000	1000	2675	57238	24.0	+006.0	+006.6	000.9	24.8	+008.7	+002
.2	- 014.8										
2700	1000	1000	2700	57237	24.0	+005.2	+002.7	001.0	24.8	+007.0	+001
.9	- 014.1										
2725	1000	1000	2725	57232	24.0	+004.3	+004.9	001.0	24.8	+005.5	+002
.7	- 014.5										
2750	1000	1000	2750	57233	24.0	+004.9	+004.4	001.0	24.8	+007.0	+003
.1	014.9										
2775	1000	1000	2775	57238	24.0	+006.5	+005.8	001.1	24.8	+006.7	+002
.1	014.5										
2800	1000	1000	2800	57236	24.0-	+007.1-	+002.3	- 001.0-	24.8-	+008.4-	+001
.0	- 014.7										
2825	1000	1000	2825	57241	24.0-	+007.5-	+001.4	- 001.1-	24.8-	+009.1-	-001
.6	- 015.3										
2850	1000	1000	2850	57244	24.0	+012.4	-002.1	001.1	24.8	+011.2	-002
.9	- 014.9										
2875	1000	1000	2875	57239	24.0	+010.7	-004.5	001.0	24.8	+013.1	-004
.4	- 014.4										
2900	1000	1000	2900	57247	24.0	+007.7	-003.8	001.0	24.8	+009.1	-003
.4	015.0										
2925	1000	1000	2925	57246	24.0	+010.8	-002.1	001.0	24.8	+010.8	-002
.5	014.7										
2950	1000	1000	2950	57246	24.0	+007.1	-003.9	001.0	24.8	+007.9	-003
.6	014.5										
2975	1000	1000	2975	57247	24.0-	+006.6-	-003.2	- 001.0-	24.8-	+006.6-	-003
.4	- 014.5										
3000	1000	1000	3000	57246	24.0	+007.4	-003.6	001.0	24.8	+007.9	-002
.6	014.7										
3025	1000	1000	3025	57245	24.0-	+007.1-	-001.8	- 001.0-	24.8-	+008.9-	-002
.5	- 015.1										
3050	1000	1000	3050	57247	24.0	+008.0	-005.6	001.0	24.8	+009.9	-001
.9	015.3										
3075	1000	1000	3075	57245	24.0	+009.1	-001.4	001.0	24.8	+009.6	-001
.8	016.0										
3100	1000	1000	3100	57245	24.0	+008.1	-002.1	001.0	24.8	+010.5	-002
.4	015.6										
3125	1000	1000	3125	57248	24.0	+010.3	-004.2	001.0	24.8	+011.9	-002
.0	015.4										
3150	1000	1000	3150	57251	24.0	+010.1	-002.3	001.1	24.8	+011.8	-001
.6	015.9										
3175	1000	1000	3175	57249	24.0	+011.9	-001.2	001.0	24.8	+013.9	-003
.5	015.6										
3200	1000	1000	3200	57250	24.0	+013.0	-003.3	001.0	24.8	+015.2	-003
.0	015.8										
3225	1000	1000	3225	57251	24.0	+013.3	-001.4	001.0	24.8	+016.4	-004
.0	015.4										
3250	1000	1000	3250	57253	24.0	+016.6	-002.3	001.0	24.8	+020.4	-004
.2	015.3										
3275	1000	1000	3275	57252	24.0-	+017.8-	-001.5	- 001.0-	24.8-	+020.6-	-002
.9	015.0										
3300	1000	1000	3300	57254	24.0-	+022.4-	+002.4	- 001.0-	24.8-	+020.4-	-002
.2	015.0										
3325	1000	1000	3325	57259	24.0	+017.3	-001.1	001.0	24.8	+020.8	-002
.7	014.7										
3350	1000	1000	3350	57252	24.0	+018.9	-004.7	000.9	24.8	+021.9	-002
.2	014.2										
3375	1000	1000	3375	57251	24.0	+016.0	-002.2	000.9	24.8	+020.9	-001
.0	013.8										
3400	1000	1000	3400	57252	24.0-	+014.7-	-003.0	- 000.9-	24.8-	+016.8-	+001
.5	- 013.7										
3425	1000	1000	3425	57251	24.0-	+014.3-	-002.2	000.9	24.8	+014.7	001







1425	0800	0800	1425	57240	24.0	+011.0	-002.0	001.1	24.8	+010.3	-003
.9	016.2										
1400	0800	0800	1400	57241	24.0	+013.1	-004.1	001.2	24.8	+011.8	-002
.7	017.1										
1375	0800	0800	1375	57247	24.0	+021.9	-010.5	000.7	24.8	+002.4	-008
.7	016.4										
1350	0800	0800	1350	57244	24.0	+006.8	-009.0	001.1	24.8	+001.5	-009
.2	015.8										
1325	0800	0800	1325	57234	24.0	+004.3	-010.1	001.0	24.8	+002.6	-009
.5	015.4										
1300	0800	0800	1300	57232	24.0	+004.7	-007.9	001.0	24.8	+004.9	-008
.1	014.8										
1275	0800	0800	1275	57234	24.0	+007.8	-004.7	000.9	24.8	+007.2	-007
.2	014.7										
1250	0800	0800	1250	57235	24.0	+012.3	-007.3	001.0	24.8	+009.9	-007
.2	014.6										
1225	0800	0800	1225	57233	24.0	+011.5	-005.0	001.0	24.8	+010.6	-007
.0	014.9										
1200	0800	0800	1200	57233	24.0	+007.9	-005.6	001.0	24.8	+007.7	-008
.5	015.0										
1175	0800	0800	1175	57231	24.0	+004.1	-011.2	001.0	24.8	+003.3	-011
.2	015.1										
1150	0800	0800	1150	57228	24.0	+005.9	-005.9	001.0	24.8	+006.9	-010
.4	014.7										
1125	0800	0800	1125	57226	24.0	+010.8	-005.3	001.0	24.8	+010.7	-007
.9	014.7										
1100	0800	0800	1100	57218	24.0	+012.0	-008.5	000.9	24.8	+010.3	-010
.7	015.2										
1075	0800	0800	1075	57231	24.0	+015.8	-003.9	001.1	24.8	+015.0	-008
.8	015.9										
1050	0800	0800	1050	57233	24.0	+010.2	-007.2	001.1	24.8	+009.7	-009
.2	016.5										
1025	0800	0800	1025	57229	24.0	+009.9	-010.5	001.1	24.8	+006.5	-010
.8	017.2										
1000	0800	0800	1000	57229	24.0	+009.6	-009.6	001.1	24.8	+006.5	-010
.1	017.1										
1000	0500	0500	1000	57404	24.0	+015.1	-003.6	001.0	24.8	+019.5	-001
.2	006.7										
0990	0500	0500	0990	57407	24.0	+015.2	-003.5	001.0	24.8	+019.2	-001
.1	-007.1										
0980	0500	0500	0980	57407	24.0	+017.4	-002.4	001.0	24.8	+019.8	-001
.0	-007.0										
0970	0500	0500	0970	57408	24.0	+017.4	-003.0	001.0	24.8	+019.4	-001
.8	006.9										
0960	0500	0500	0960	57408	24.0	+019.3	-003.0	001.0	24.8	+021.8	-002
.7	006.9										
0950	0500	0500	0950	57407	24.0	+023.4	-002.7	001.0	24.8	+024.5	+000
.6	006.9										
0940	0500	0500	0940	57407	24.0	+023.2	-002.8	001.0	24.8	+025.2	-000
.8	007.3										
0930	0500	0500	0930	57406	24.0	+023.0	-004.6	001.0	24.8	+023.9	-001
.2	007.3										
0920	0500	0500	0920	57407	24.0	+022.1	-005.8	001.1	24.8	+024.0	-000
.3	-007.5										
0910	0500	0500	0910	57407	24.0	+019.6	-003.4	001.1	24.8	+020.2	+001
.8	007.8										
0900	0500	0500	0900	57409	24.0	+018.3	-003.7	001.1	24.8	+019.5	-000
.1	007.7										
0890	0500	0500	0890	57409	24.0	+015.2	-002.5	001.1	24.8	+016.4	-001
.2	-007.9										
0880	0500	0500	0880	57411	24.0	+013.6	-008.2	001.1	24.8	+015.6	+000
.5	007.5										
0870	0500	0500	0870	57411	24.0	+013.8	-003.2	001.1	24.8	+014.7	+001
.3	007.5										
0860	0500	0500	0860	57412	24.0	+017.8	-002.5	001.1	24.8	+016.2	+000

0850	0500	0500	0850	57413	24.0	+013.3	-003.0	001.1	24.8	+015.6	+001
.8	007.7										
0840	0500	0500	0840	57412	24.0	+015.6	-003.6	001.1	24.8	+013.7	+000
.8	007.8										
0830	0500	0500	0830	57413	24.0	+009.4	-004.7	001.1	24.8	+011.3	+000
.5	007.8										
0820	0500	0500	0820	57414	24.0	+009.0	-005.8	001.1	24.8	+007.5	-002
.0	008.1										
0810	0500	0500	0810	57413	24.0	+006.7	-002.9	001.2	24.8	+007.5	-003
.8	008.1										
0800	0500	0500	0800	57414	24.0	+009.1	-002.7	001.1	24.8	+009.9	-001
.8	007.7										
0790	0500	0500	0790	57416	24.0	+011.7	-002.9	001.1	24.8	+010.8	-002
.6	007.8										
0780	0500	0500	0780	57416	24.0	+009.8	-000.7	001.2	24.8	+010.5	-004
.5	008.0										
0770	0500	0500	0770	57416	24.0	+010.6	-003.5	001.1	24.8	+009.8	-003
.8	008.0										
0760	0500	0500	0760	57417	24.0	+009.3	-000.6	001.2	24.8	+009.6	-001
.9	008.0										
0750	0500	0500	0750	57418	24.0	+007.5	-001.1	001.2	24.8	+008.4	-003
.9	008.3										
0740	0500	0500	0740	57418	24.0	+001.3	-001.9	001.2	24.8	+004.1	-003
.9	008.3										
0730	0500	0500	0730	57420	24.0	-000.8	-000.9	001.2	24.8	+001.9	-004
.8	008.0										
0720	0500	0500	0720	57418	24.0	+000.0	+000.7	001.2	24.8	+001.5	-005
.0	008.2										
0710	0500	0500	0710	57417	24.0	-000.6	-000.6	001.2	24.8	+000.8	-004
.7	008.3										
0700	0500	0500	0700	57416	24.0	-003.2	-000.3	001.2	24.8	+000.7	-004
.3	008.2										
0690	0500	0500	0690	57416	24.0	-003.5	+000.8	001.2	24.8	-001.1	-003
.9	008.2										
0680	0500	0500	0680	57414	24.0	-006.0	+000.0	001.2	24.8	-003.3	-004
.1	008.4										
0670	0500	0500	0670	57414	24.0	-007.8	+000.8	001.2	24.8	-004.6	-003
.2	008.6										
0660	0500	0500	0660	57415	24.0	-014.2	-000.7	001.2	24.8	-010.9	-004
.6	008.6										
0650	0500	0500	0650	57415	24.0	-014.1	-002.1	001.2	24.8	-013.9	-005
.0	008.3										
0640	0500	0500	0640	57416	24.0	-015.7	-001.9	001.1	24.8	-014.6	-006
.0	008.1										
0630	0500	0500	0630	57417	24.0	-015.8	-004.1	001.1	24.8	-012.9	-005
.3	007.9										
0620	0500	0500	0620	57417	24.0	-014.3	-001.8	001.1	24.8	-011.9	-004
.9	007.4										
0610	0500	0500	0610	57416	24.0	-013.4	+000.0	001.1	24.8	-013.5	-006
.4	007.6										
0600	0500	0500	0600	57416	24.0	-015.4	-002.7	001.1	24.8	-014.2	-007
.7	007.6										
0590	0500	0500	0590	57417	24.0	-016.9	-003.0	001.0	24.8	-013.8	-008
.5	007.5										
0580	0500	0500	0580	57417	24.0	-018.1	-003.6	001.0	24.8	-011.3	-009
.2	007.4										
0570	0500	0500	0570	57418	24.0	-014.9	-004.5	001.0	24.8	-010.0	-005
.9	007.2										
0560	0500	0500	0560	57417	24.0	-014.2	-000.7	001.0	24.8	-009.6	-007
.6	007.5										
0550	0500	0500	0550	57415	24.0	-016.6	-003.7	001.0	24.8	-011.0	-006
.5	007.3										
0540	0500	0500	0540	57416	24.0	-015.0	-001.7	001.0	24.8	-012.8	-006
.2	007.7										
0530	0500	0500	0530	57416	24.0	-018.2	-004.5	001.0	24.8	-016.3	-006







0000	0370	0370	0000	57412	24.0	+000.4	+002.3	000.9	24.8	+001.0	+003.5
.5	005.5										
0000	0360	0360	0000	57421	24.0	+001.6	+002.4	000.9	24.8	+002.5	+003.5
.5	005.5										
0000	0350	0350	0000	57420	24.0	+004.0	+003.6	000.9	24.8	+002.8	+004.1
.1	005.3										
0000	0340	0340	0000	57414	24.0	+001.6	+004.4	000.9	24.8	+004.4	+004.9
.9	005.3										
0000	0330	0330	0000	57417	24.0	+001.9	+005.8	000.9	24.8	+005.3	+006.0
.0	005.4										
0000	0320	0320	0000	57422	24.0	+003.2	+005.2	000.9	24.8	+004.4	+006.2
.2	005.3										
0000	0310	0310	0000	57426	24.0	+003.1	+006.5	000.9	24.8	+005.5	+005.9
.9	005.1										
0000	0300	0300	0000	57426	24.0	-002.3	-008.3	000.9	24.8	-006.3	-006.8
.8	005.3										
0010	0300	0300	0010	57426	24.0	-002.1	-007.5	000.9	24.8	-006.7	-006.6
.6	005.2										
0020	0300	0300	0020	57427	24.0	-006.0	-008.1	000.9	24.8	-009.3	-009.8
.8 -	005.5										
0030	0300	0300	0030	57425	24.0	-009.4	-008.1	000.9	24.8	-010.1	-011.0
.0 -	005.5										
0040	0300	0300	0040	57429	24.0	-003.7	-009.4	001.0	24.8	-005.6	-008.7
.7	005.8										
0050	0300	0300	0050	57418	24.0	+001.0	-005.3	000.9	24.8	-000.1	-005.1
.1	005.8										
0060	0300	0300	0060	57414	24.0	+000.8	-005.2	000.9	24.8	-000.5	-007.6
.6	005.5										
0070	0300	0300	0070	57415	24.0	-000.9	-009.5	000.9	24.8	-002.2	-009.5
.5	005.5										
0080	0300	0300	0080	57415	24.0	-005.7	-010.9	000.9	24.8	-004.7	-011.5
.5	005.3										
0090	0300	0300	0090	57419	24.0	-003.6	-016.4	000.9	24.8	-007.0	-015.3
.3	005.3										
0100	0300	0300	0100	57416	24.0	-006.1	-013.8	000.9	24.8	-008.9	-015.9
.9	005.6										
0110	0300	0300	0110	57416	24.0	-006.8	-015.8	000.9	24.8	-007.6	-015.5
.5	005.8										
0120	0300	0300	0120	57425	24.0	-001.9	-008.5	001.0	24.8	-005.8	-011.3
.3	005.8										
0130	0300	0300	0130	57425	24.0	+003.4	+000.0	000.9	24.8	-001.9	-002.8
.8	005.7										
0140	0300	0300	0140	57419	24.0	+001.9	+000.8	000.9	24.8	-002.0	-001.3
.3	005.5										
0150	0300	0300	0150	57414	24.0	+000.9	-002.7	000.9	24.8	-003.7	-002.2
.2	005.6										
0160	0300	0300	0160	57416	24.0	-000.6	-002.7	000.9	24.8	-002.7	-004.9
.9 -	005.7										
0170	0300	0300	0170	57418	24.0	-002.7	-002.6	000.9	24.8	-003.0	-005.1
.1 -	005.6										
0180	0300	0300	0180	57418	24.0	-000.8	-005.9	000.9	24.8	-003.4	-006.6
.6 -	005.7										
0190	0300	0300	0190	57421	24.0	-001.9	-004.3	000.9	24.8	-002.3	-004.7
.7 -	005.6										
0200	0300	0300	0200	57420	24.0	-001.6	-004.2	000.9	24.8	-002.0	-004.7
.7	005.8										
0210	0300	0300	0210	57418	24.0	-000.7	-005.6	000.9	24.8	-001.6	-003.4
.4	005.9										
0220	0300	0300	0220	57421	24.0	+000.3	-004.8	001.0	24.8	-000.7	-003.2
.2	005.5										
0230	0300	0300	0230	57422	24.0	+000.9	-001.3	000.9	24.8	-001.1	-001.8
.8	005.7										
0240	0300	0300	0240	57420	24.0	+000.0	-001.7	000.9	24.8	-001.2	-002.9
.9	005.8										
0250	0300	0300	0250	57422	24.0	+001.0	-001.5	000.9	24.8	-000.1	-003.0

0260	0300	0300	0260	57421	24.0	+000.3	-002.5	000.9	24.8	-000.5	-002
.2 -	005.7										
0270	0300	0300	0270	57415	24.0	-002.7	-002.1	000.9	24.8	-002.5	+000
.1 -	005.7										
0280	0300	0300	0280	57413	24.0	+000.8	-006.4	000.9	24.8	-000.6	-005
.1	005.6										
0290	0300	0300	0290	57413	24.0	+002.8	-006.2	000.9	24.8	-001.4	-005
.0	005.5										
0300	0300	0300	0300	57412	24.0	-000.3	-003.9	000.9	24.8	-001.9	-005
.4	005.8										
0310	0300	0300	0310	57413	24.0	+001.2	-006.0	000.9	24.8	-002.5	-005
.3 -	005.5										
0320	0300	0300	0320	57415	24.0	-006.1	-007.6	000.9	24.8	-002.6	-004
.9 -	005.4										
0330	0300	0300	0330	57416	24.0	-004.8	-006.5	000.9	24.8	-004.7	-004
.3	005.5										
0340	0300	0300	0340	57420	24.0	-004.0	-006.8	000.8	24.8	-006.3	-005
.1	005.4										
0350	0300	0300	0350	57425	24.0	-008.3	-008.5	000.9	24.8	-008.5	-005
.9	005.6										
0360	0300	0300	0360	57425	24.0	-011.8	-007.9	000.9	24.8	-008.6	-005
.5	005.6										
0370	0300	0300	0370	57423	24.0-	-008.8-	-005.6 -	000.8-	24.8-	-009.6-	-004
.7 -	005.6										
0380	0300	0300	0380	57425	24.0-	-008.0-	-005.4 -	000.8-	24.8-	-009.5-	-005
.2 -	005.6										
0390	0300	0300	0390	57424	24.0	-011.3	-005.5	000.9	24.8	-010.4	-003
.9	005.7										
0400	0300	0300	0400	57421	24.0	-009.5	-002.0	000.9	24.8	-009.2	-004
.6	005.7										
0410	0300	0300	0410	57421	24.0	-010.0	-002.8	000.9	24.8	-008.7	-003
.4 -	005.8										
0420	0300	0300	0420	57416	24.0	-011.3	-003.4	000.9	24.8	-007.8	-002
.2	005.7										
0430	0300	0300	0430	57412	24.0	-008.1	-000.8	000.9	24.8	-006.4	-001
.5 -	005.5										
0440	0300	0300	0440	57409	24.0	-010.0	-002.4	000.9	24.8	-006.9	-002
.3	005.6										
0450	0300	0300	0450	57409	24.0	-010.3	-001.4	000.9	24.8	-007.0	-001
.9	005.4										
0460	0300	0300	0460	57408	24.0	-011.9	-001.3	000.9	24.8	-007.4	-001
.6	006.0										
0470	0300	0300	0470	57412	24.0	-014.1	-003.5	000.9	24.8	-008.4	-001
.9 -	006.0										
0480	0300	0300	0480	57411	24.0	-011.1	+000.9	000.9	24.8	-008.3	-001
.7 -	005.8										
0490	0300	0300	0490	57412	24.0	-009.4	+000.1	000.9	24.8	-006.3	-000
.1	006.0										
0500	0300	0300	0500	57409	24.0	-010.4	+001.7	000.9	24.8	-005.7	+000
.0	005.8										
0510	0300	0300	0510	57409	24.0	-009.0	+002.5	000.9	24.8	-006.8	-002
.1	006.0										
0520	0300	0300	0520	57410	24.0	-012.2	-000.5	000.9	24.8	-007.2	-001
.6	005.8										
0530	0300	0300	0530	57411	24.0	-012.7	+002.0	000.9	24.8	-007.4	-002
.0	005.6										
0540	0300	0300	0540	57413	24.0	-014.4	-001.1	000.9	24.8	-008.5	-003
.0	005.8										
0550	0300	0300	0550	57413	24.0	-014.0	+001.9	000.9	24.8	-009.5	-001
.8 -	005.8										
0560	0300	0300	0560	57412	24.0-	-013.8-	+000.5 -	000.8-	24.8-	-010.2-	-003
.4	005.7										
0570	0300	0300	0570	57409	24.0	-015.0	+000.2	000.8	24.8	-011.6	-001
.6 -	005.8										
0580	0300	0300	0580	57407	24.0	-016.4	-000.2	000.8	24.8	-013.8	-001

0590	0300	0300	0590	57407	24.0	-020.9	-001.8	000.8	24.8	-014.8	-004
.6	005.7										
0600	0300	0300	0600	57408	24.0	-022.6	-000.2	000.9	24.8	-016.4	-005
.0	-005.7										
0610	0300	0300	0610	57410	24.0	-021.3	-000.6	000.9	24.8	-017.7	-005
.3	006.1										
0620	0300	0300	0620	57412	24.0	-025.5	+000.0	000.9	24.8	-025.3	-004
.4	-005.7										
0630	0300	0300	0630	57413	24.0	-022.3	-000.6	000.9	24.8	-016.3	-005
.6	-006.2										
0640	0300	0300	0640	57412	24.0	-023.2	+000.8	000.9	24.8	-017.2	-005
.5	006.3										
0650	0300	0300	0650	57411	24.0	-022.3	-002.0	000.9	24.8	-015.2	-006
.4	-006.8										
0660	0300	0300	0660	57407	24.0	-020.7	-001.0	001.0	24.8	-012.8	-006
.2	-006.6										
0670	0300	0300	0670	57410	24.0	-018.6	+000.4	001.0	24.8	-012.1	-006
.8	006.6										
0680	0300	0300	0680	57409	24.0	-014.7	+000.3	001.0	24.8	-009.1	-007
.5	006.7										
0690	0300	0300	0690	57409	24.0	-014.0	-000.1	001.0	24.8	-006.4	-007
.3	006.8										
0700	0300	0300	0700	57410	24.0	-015.8	+000.0	001.0	24.8	-005.6	-008
.3	006.7										
0710	0300	0300	0710	57409	24.0	-015.8	-001.7	000.9	24.8	-007.8	-011
.2	006.2										
0720	0300	0300	0720	57411	24.0	-015.6	-003.9	001.0	24.8	-006.5	-009
.8	006.6										
0730	0300	0300	0730	57412	24.0	-017.3	-000.8	001.1	24.8	-007.1	-011
.1	006.4										
0740	0300	0300	0740	57412	24.0	-018.3	-004.5	001.0	24.8	-007.3	-012
.8	006.2										
0750	0300	0300	0750	57413	24.0	-016.9	-001.4	001.0	24.8	-008.5	-011
.0	-006.3										
0760	0300	0300	0760	57414	24.0	-018.4	-000.6	001.1	24.8	-007.9	-010
.1	-006.2										
0770	0300	0300	0770	57416	24.0	-018.3	-002.7	001.0	24.8	-008.0	-010
.5	-006.2										
0780	0300	0300	0780	57413	24.0	-016.7	-000.5	001.0	24.8	-007.5	-011
.4	-006.3										
0790	0300	0300	0790	57414	24.0	-019.9	-001.9	001.1	24.8	-006.8	-012
.2	006.5										
0800	0300	0300	0800	57411	24.0	-017.9	+000.4	001.1	24.8	-007.0	-010
.0	006.1										
0810	0300	0300	0810	57409	24.0	-015.6	-003.9	001.1	24.8	-007.0	-011
.2	006.4										
0820	0300	0300	0820	57408	24.0	-016.8	-003.7	001.1	24.8	-012.4	-011
.7	006.0										
0830	0300	0300	0830	57409	24.0	-017.0	-002.7	001.1	24.8	-006.0	-012
.5	006.4										
0840	0300	0300	0840	57409	24.0	-014.0	-003.2	001.2	24.8	-006.1	-012
.8	006.6										
0850	0300	0300	0850	57408	24.0	-014.2	-000.9	001.1	24.8	-004.2	-012
.0	006.7										
0860	0300	0300	0860	57408	24.0	-015.8	-001.7	001.1	24.8	-001.8	-012
.5	-006.7										
0870	0300	0300	0870	57405	24.0	-016.3	-004.7	001.1	24.8	-003.0	-015
.1	006.3										
0880	0300	0300	0880	57405	24.0	-014.4	-000.3	001.2	24.8	-001.9	-013
.7	006.7										
0890	0300	0300	0890	57407	24.0	-013.2	-000.2	001.1	24.8	-001.1	-012
.8	006.6										
0900	0300	0300	0900	57410	24.0	-011.6	+000.4	001.2	24.8	-000.3	-013
.7	006.7										
0910	0300	0300	0910	57409	24.0	-011.5	-001.2	001.2	24.8	-001.0	-013

0920	0300	0300	0920	57410	24.0	-009.7	+000.0	001.2	24.8	+002.8	-013
.1	006.7										
0930	0300	0300	0930	57409	24.0	-007.6	+001.1	001.2	24.8	+003.0	-012
.9	006.7										
0940	0300	0300	0940	57408	24.0	-006.1	+002.1	001.1	24.8	+005.3	-012
.2	006.4										
0950	0300	0300	0950	57408	24.0	-005.9	+002.7	001.1	24.8	+006.4	-010
.5	006.3										
0960	0300	0300	0960	57407	24.0	-007.9	+001.6	001.1	24.8	+005.0	-011
.5	006.0										
0970	0300	0300	0970	57407	24.0	-007.5	+000.4	001.1	24.8	+003.4	-011
.5 -	006.1										
0980	0300	0300	0980	57409	24.0	-009.1	+001.5	001.1	24.8	+000.6	-010
.0	006.1										
0990	0300	0300	0990	57408	24.0	-009.9	+001.2	001.1	24.8	+000.9	-012
.5 -	006.1										
1000	0300	0300	1000	57408	24.0	-013.2	+002.9	001.0	24.8	-000.6	-011
.3	006.1										
1000	0300	0300	1000	57409	24.0	-008.6	+005.3	001.1	24.8	+000.4	-009
.8	006.2										
1000	0310	0310	1000	57409	24.0	-006.7	+000.5	001.2	24.8	+001.1	-008
.9	006.2										
1000	0320	0320	1000	57409	24.0	-003.2	+002.7	001.1	24.8	+001.8	-007
.8	006.5										
1000	0330	0330	1000	57410	24.0	+000.4	+000.4	001.2	24.8	+005.2	-008
.7	006.4										
1000	0340	0340	1000	57410	24.0	+008.1	+001.7	001.2	24.8	+010.8	-001
.3	006.4										
1000	0350	0350	1000	57407	24.0	+015.9	-000.4	001.1	24.8	+016.4	-001
.1 -	006.4										
1000	0360	0360	1000	57408	24.0	+018.1	+002.7	001.1	24.8	+019.7	+000
.8	006.3										
1000	0370	0370	1000	57406	24.0	+014.5	+001.5	001.1	24.8	+021.6	-003
.1	005.9										
1000	0380	0380	1000	57408	24.0	+015.1	-000.2	001.1	24.8	+019.5	-003
.2	006.0										
5000	4950	4950	5000	57162	24.0	+016.8	+008.4	001.0	24.8	+021.8	+001
.8	009.7										
4975	4950	4950	4975	57155	24.0	+011.7	+002.6	001.1	24.8	+013.5	-004
.7	010.5										
4950	4950	4950	4950	57154	24.0	+012.3	+001.3	001.1	24.8	+014.9	-001
.9	009.9										
4925	4950	4950	4925	57159	24.0	+017.4	+004.0	001.1	24.8	+018.9	+000
.4	010.0										
4900	4950	4950	4900	57162	24.0	+018.5	+008.0	001.1	24.8	+020.7	+001
.6	010.2										
4875	4950	4950	4875	57153	24.0	+012.0	+001.1	001.1	24.8	+014.7	-004
.0	010.9										
4850	4950	4950	4850	57151	24.0	+014.9	+005.3	001.2	24.8	+015.7	+000
.4	010.4										
4825	4950	4950	4825	57152	24.0	+012.9	+003.1	001.1	24.8	+015.1	+000
.0	011.0										
4800	4950	4950	4800	57152	24.0	+011.6	+006.1	001.2	24.8	+012.6	-000
.8	011.1										
4775	4950	4950	4775	57151	24.0	+011.6	+003.2	001.2	24.8	+010.6	+000
.7	010.9										
4750	4950	4950	4750	57157	24.0	+007.7	+004.9	001.2	24.8	+008.9	+002
.3	010.8										
4725	4950	4950	4725	57157	24.0	+005.2	+005.4	001.1	24.8	+007.0	+000
.2	010.8										
4700	4950	4950	4700	57160	24.0	+005.4	+004.9	001.1	24.8	+005.9	-001
.5	010.6										
4675	4950	4950	4675	57162	24.0	+007.8	+004.1	001.1	24.8	+005.9	-001
.9	010.9										
4650	4950	4950	4650	57164	24.0	+007.5	+004.7	001.1	24.8	+008.4	-001

4625	4950	4950	4625	57160	24.0	+008.1	+003.7	001.1	24.8	+008.8	-000
.6	010.8										
4600	4950	4950	4600	57156	24.0	+006.2	+001.2	001.1	24.8	+007.2	-000
.9	011.4										
4575	4950	4950	4575	57153	24.0	+007.3	+003.8	001.1	24.8	+006.2	-000
.9	010.5										
4550	4950	4950	4550	57153	24.0	+005.9	+003.1	001.1	24.8	+006.3	-002
.3	010.8										
4525	4950	4950	4525	57156	24.0	+007.1	+003.9	001.0	24.8	+005.8	-001
.8	010.2										
4500	4950	4950	4500	57156	24.0	+006.9	+004.2	001.0	24.8	+007.0	-002
.6	010.4										
4475	4950	4950	4475	57148	24.0	+014.7	+006.8	000.9	24.8	+013.7	-000
.6	009.8										
4450	4950	4950	4450	57148	24.0	+022.7	+008.8	001.0	24.8	+020.5	-000
.8	009.8										
4425	4950	4950	4425	57151	24.0	+023.7	+007.6	001.1	24.8	+021.3	-000
.4	010.0										
4400	4950	4950	4400	57152	24.0	+023.8	+012.1	001.1	24.8	+022.9	+001
.2	011.5										
4375	4950	4950	4375	57150	24.0	+020.8	+010.7	001.2	24.8	+021.2	+004
.6	012.3										
4350	4950	4950	4350	57154	24.0	+012.3	+008.2	001.4	24.8	+012.8	+002
.8	014.5										
4325	4950	4950	4325	57155	24.0	+004.8	+004.5	001.3	24.8	+000.8	+001
.4	015.0										
4300	4950	4950	4300	57157	24.0	-009.5	+001.0	001.3	24.8	-012.8	-001
.6	013.6										
4275	4950	4950	4275	57158	24.0	-013.1	-004.5	001.2	24.8	-014.4	-003
.0	012.0										
4250	4950	4950	4250	57149	24.0	-005.1	+005.8	001.1	24.8	-007.3	+002
.2	011.0										
4225	4950	4950	4225	57154	24.0	+004.3	+012.7	001.2	24.8	+002.5	+007
.8	011.9										
4200	4950	4950	4200	57161	24.0	-001.5	+008.2	001.2	24.8	-004.3	+002
.5	012.2										
4175	4950	4950	4175	57162	24.0	-006.2	+003.3	001.1	24.8	-007.9	-001
.0	011.6										
4150	4950	4950	4150	57160	24.0	-003.7	+007.2	001.1	24.8	-002.7	+000
.6	011.2										
4125	4950	4950	4125	57161	24.0	-002.1	+007.7	001.2	24.8	-002.0	+000
.6	012.2										
4100	4950	4950	4100	57163	24.0	-004.7	+000.9	001.1	24.8	-003.9	-003
.8	012.2										
4000	5000	5000	4000	57146	24.0	+000.8	-007.8	001.1	24.8	+000.9	-004
.6	012.3										
4025	5000	5000	4025	57148	24.0	+001.1	-002.2	001.1	24.8	+000.6	-005
.4	011.8										
4050	5000	5000	4050	57154	24.0	+009.1	+001.7	001.2	24.8	+007.9	+004
.9	012.2										
4075	5000	5000	4075	57162	24.0	+010.0	+000.8	001.1	24.8	+008.1	+004
.9	011.6										
4100	5000	5000	4100	57160	24.0	+019.1	+004.7	001.2	24.8	+022.1	+009
.6	011.0										
4125	5000	5000	4125	57156	24.0	+015.2	-001.2	001.3	24.8	+016.5	+004
.4	013.2										
4150	5000	5000	4150	57161	24.0	+002.6	-007.0	001.2	24.8	+006.4	-000
.6	012.0										
4175	5000	5000	4175	57152	24.0	+006.5	-004.7	001.2	24.8	+004.9	-001
.8	012.3										
4200	5000	5000	4200	57153	24.0	+004.2	-002.2	001.2	24.8	+005.2	-001
.7	011.6										
4225	5000	5000	4225	57153	24.0	+003.0	-006.6	001.2	24.8	+005.3	-002
.3	011.6										
4250	5000	5000	4250	57149	24.0	+005.2	+004.5	001.1	24.8	+000.1	+001

4275	5000	5000	4275	57137	24.0	+012.5	+002.4	001.1	24.8	+015.3	+003
.8	011.1										
4300	5000	5000	4300	57159	24.0	+015.4	-000.4	001.3	24.8	+018.5	+005
.0	012.5										
4325	5000	5000	4325	57156	24.0	+007.3	-001.5	001.5	24.8	+010.7	+001
.0	014.5										
4350	5000	5000	4350	57154	24.0	+002.2	-004.2	001.5	24.8	+003.5	-000
.8	014.4										
4375	5000	5000	4375	57155	24.0	-005.5	-005.5	001.5	24.8	-005.5	-000
.4	015.0										
4400	5000	5000	4400	57156	24.0	-016.6	-005.2	001.4	24.8	-016.3	-000
.3	014.0										
4425	5000	5000	4425	57154	24.0	-023.0	-005.2	001.3	24.8	-023.8	+000
.0	013.0										
4450	5000	5000	4450	57154	24.0	-023.0	-007.0	001.2	24.8	-023.1	-000
.4	011.9										
4475	5000	5000	4475	57148	24.0	-016.3	-008.3	001.1	24.8	-020.9	+001
.1	011.2										
4500	5000	5000	4500	57149	24.0	-008.8	-003.6	001.2	24.8	-011.6	+001
.5	010.8										
4525	5000	5000	4525	57154	24.0	-010.0	-004.3	001.2	24.8	-010.2	+002
.4	011.3										
4550	5000	5000	4550	57155	24.0	-008.3	-000.1	001.2	24.8	-011.4	+002
.3	011.7										
4575	5000	5000	4575	57150	24.0	-005.8	-002.3	001.2	24.8	-008.4	+002
.8	011.9										
4600	5000	5000	4600	57153	24.0	-003.7	-005.6	001.2	24.8	-008.4	+001
.3	012.1										
4625	5000	5000	4625	57150	24.0	-007.1	-000.6	001.2	24.8	-006.8	+002
.0	011.8										
4650	5000	5000	4650	57152	24.0	-004.4	-002.0	001.2	24.8	-006.1	+002
.7	012.4										
4675	5000	5000	4675	57151	24.0	-006.6	-006.0	001.2	24.8	-008.2	-000
.2	012.2										
4700	5000	5000	4700	57148	24.0	-012.4	-008.5	001.2	24.8	-014.2	-004
.8	012.2										
4725	5000	5000	4725	57145	24.0	-009.3	-008.3	001.2	24.8	-012.8	-002
.4	011.8										
4750	5000	5000	4750	57146	24.0	-009.3	-006.1	001.2	24.8	-012.2	+000
.0	011.6										
4775	5000	5000	4775	57145	24.0	-006.9	-004.8	001.2	24.8	-011.0	+002
.1	011.9										
4800	5000	5000	4800	57150	24.0	-007.4	-000.8	001.3	24.8	-011.2	+003
.0	013.1										
4825	5000	5000	4825	57149	24.0	-011.9	-004.6	001.2	24.8	-014.1	+002
.0	013.2										
4850	5000	5000	4850	57153	24.0	-014.8	-005.6	001.3	24.8	-019.5	+001
.9	012.3										
4875	5000	5000	4875	57155	24.0	-021.3	-008.0	001.2	24.8	-024.5	-001
.8	012.2										
4900	5000	5000	4900	57157	24.0	-028.4	-012.7	001.2	24.8	-032.7	-007
.3	011.2										
4925	5000	5000	4925	57160	24.0	-021.2	-010.7	001.0	24.8	-029.0	-001
.6	010.0										
4950	5000	5000	4950	57158	24.0	-013.6	-008.3	001.0	24.8	-020.9	+003
.7	010.3										
4975	5000	5000	4975	57161	24.0	-011.4	-003.2	001.0	24.8	-015.6	+005
.3	010.3										
5000	5000	5000	5000	57160	24.0	-011.4	-006.3	001.1	24.8	-012.7	+004
.8	011.2										
5000	4650	4650	5000	57099	24.0	-013.1	+023.8	000.9	24.8	+006.1	+022
.3	009.8										
4975	4650	4650	4975	57107	24.0	-004.2	+018.7	001.0	24.8	+014.5	+016
.9	010.0										
4950	4650	4650	4950	57146	24.0	-002.4	+017.8	000.9	24.8	+015.7	+011







2925	2050	2050	2925	57106	24.0	-009.6	+000.1	001.1	24.8	-008.7	+002
.9	012.5										
2900	2050	2050	2900	57111	24.0	-011.3	-002.4	001.2	24.8	-006.3	+003
.3	013.8										
2875	2050	2050	2875	57090	24.0	-006.8	+001.0	001.2	24.8	-005.4	+005
.3	013.3										
2850	2050	2050	2850	57108	24.0	-008.0	+000.7	001.2	24.8	-003.7	+005
.9	013.5										
2825	2050	2050	2825	57105	24.0	-005.3	+003.2	001.2	24.8	-003.0	+007
.2	013.4										
2800	2050	2050	2800	57104	24.0	-009.4	-001.3	001.1	24.8	-004.2	+005
.6	013.5										
2775	2050	2050	2775	57107	24.0	-006.2	-001.1	001.1	24.8	-006.5	+005
.2 -	013.1										
2750	2050	2050	2750	57102	24.0	-007.6	+001.0	001.1	24.8	-006.6	+004
.4	013.5										
2725	2050	2050	2725	57098	24.0	-009.6	+000.0	001.1	24.8	-004.8	+005
.5	013.0										
2700	2050	2050	2700	57101	24.0	-011.0	-000.1	001.1	24.8	-008.8	+004
.7	013.4										
2675	2050	2050	2675	57104	24.0	-010.8	+000.0	001.1	24.8	-006.4	+004
.4	013.6										
2650	2050	2050	2650	57103	24.0	-005.6	+001.5	001.1	24.8	-006.0	+006
.6	013.3										
2625	2050	2050	2625	57103	24.0-	-005.7-	+001.9 -	001.1-	24.8-	-005.5-	+005
.8 -	013.0										
2600	2050	2050	2600	57105	24.0-	-006.8-	+000.1 -	001.1-	24.8-	-005.9-	+007
.6 -	013.4										
2575	2050	2050	2575	57107	24.0	-012.5	+000.6	001.1	24.8	-006.6	+007
.3	013.2										
2550	2050	2050	2550	57103	24.0-	-007.3-	+004.1 -	001.1-	24.8-	-007.1-	+008
.2 -	013.2										
2525	2050	2050	2525	57101	24.0-	-003.3-	+006.9 -	001.1-	24.8-	-003.3-	+010
.6 -	013.8										
2500	2050	2050	2500	57100	24.0-	-003.2-	+005.4 -	001.0-	24.8-	-003.1-	+011
.3 -	012.1										
2475	2050	2050	2475	57100	24.0-	-009.4-	+008.7 -	000.9-	24.8-	-010.4-	+009
.5 -	012.1										
2450	2050	2050	2450	57102	24.0	-014.5	+006.3	001.0	24.8	-009.9	+011
.9	012.1										
2425	2050	2050	2425	57106	24.0	-019.6	+006.4	000.9	24.8	-019.0	+010
.8	011.5										
2400	2050	2050	2400	57103	24.0	-029.1	+004.2	001.0	24.8	-029.1	+009
.9	011.8										
2375	2050	2050	2375	57104	24.0	-039.4	-002.7	000.9	24.8	-044.7	+005
.7	010.4										
2350	2050	2050	2350	57127	24.0	-046.3	+001.1	001.1	24.8	-046.9	+008
.6	014.0										
2325	2050	2050	2325	57114	24.0	-025.1	+006.6	001.3	24.8	-026.9	+010
.4	016.0										
2300	2050	2050	2300	57109	24.0	-014.0	+003.8	001.3	24.8	-016.1	+009
.3	015.5										
2275	2050	2050	2275	57108	24.0	-011.7	-001.7	001.4	24.8	-012.5	+001
.7	015.6										
2250	2050	2050	2250	57114	24.0	-009.0	-001.2	001.4	24.8	-008.5	-002
.9	017.4										
2225	2050	2050	2225	57114	24.0	-001.4	+001.3	001.4	24.8	-000.4	-000
.4	016.3										
2200	2050	2050	2200	57125	24.0	+000.5	+000.8	001.3	24.8	+004.3	+001
.1	015.1										
2175	2050	2050	2175	57125	24.0-	+004.7-	+003.0 -	001.2-	24.8-	+004.3-	+001
.6 -	014.1										
2150	2050	2050	2150	57120	24.0	-000.1	+001.0	001.2	24.8	+001.8	+001
.5	013.7										
2125	2050	2050	2125	57113	24.0	+001.2	+002.6	001.1	24.8	+001.8	+001

2100	2050	2050	2100	57112	24.0	-001.9	+002.2	001.1	24.8	+000.2	+003
.9	013.7										
2075	2050	2050	2075	57118	24.0	+000.2	+005.6	001.1	24.8	-001.7	+003
.8	013.6										
2050	2050	2050	2050	57115	24.0	-005.6	+004.0	001.1	24.8	-002.3	+003
.3	014.0										
2025	2050	2050	2025	57109	24.0	-001.0	+002.9	001.2	24.8	-003.0	+002
.6	014.5										
2000	2050	2050	2000	57115	24.0	+002.8	+004.3	001.2	24.8	+000.9	+002
.6	013.8										
2000	2200	2200	2000	57115	24.0	-007.6	+001.6	001.1	24.8	-008.2	-002
.8 -	013.1										
2025	2200	2200	2025	57120	24.0	-005.9	-003.1	001.2	24.8	-009.3	-002
.2	014.0										
2050	2200	2200	2050	57125	24.0	-006.4	+000.6	001.2	24.8	-008.4	-002
.1	014.1										
2075	2200	2200	2075	57120	24.0	-006.8	-002.9	001.2	24.8	-008.1	-002
.3	015.0										
2100	2200	2200	2100	57123	24.0	-005.2	-001.3	001.2	24.8	-006.9	-002
.4	014.3										
2125	2200	2200	2125	57127	24.0	-008.5	-002.9	001.2	24.8	-009.8	-003
.4	014.4										
2150	2200	2200	2150	57134	24.0	-005.5	-003.8	001.2	24.8	-006.6	-005
.2	014.9										
2175	2200	2200	2175	57135	24.0	-003.0	-006.1	001.2	24.8	-002.6	-005
.3	015.3										
2200	2200	2200	2200	57135	24.0	+000.2	-005.5	001.3	24.8	+000.7	-004
.9	015.2										
2225	2200	2200	2225	57116	24.0	+006.3	-000.8	001.2	24.8	+007.0	-003
.4	015.0										
2250	2200	2200	2250	57119	24.0	+004.0	-004.8	001.2	24.8	+003.6	-005
.5	014.1										
2275	2200	2200	2275	57124	24.0	+003.4	-003.9	001.2	24.8	+003.1	-006
.5	014.5										
2300	2200	2200	2300	57126	24.0	+004.3	-002.2	001.2	24.8	+004.9	-004
.2	014.7										
2325	2200	2200	2325	57126	24.0	+007.4	-003.7	001.2	24.8	+006.4	-004
.6	014.1										
2350	2200	2200	2350	57120	24.0	+001.4	-000.7	001.1	24.8	+004.9	-007
.7	013.1										
2375	2200	2200	2375	57126	24.0	+002.3	-005.0	001.2	24.8	+002.3	-008
.1	013.9										
2400	2200	2200	2400	57119	24.0	+003.1	-003.1	001.2	24.8	+003.7	-007
.9	013.3										
2425	2200	2200	2425	57124	24.0	+004.1	-004.2	001.2	24.8	+003.4	-006
.9	014.3										
2450	2200	2200	2450	57120	24.0	+004.3	-003.3	001.2	24.8	+003.6	-006
.5	013.5										
2475	2200	2200	2475	57125	24.0	+000.9	-006.9	001.2	24.8	+002.4	-005
.6	014.1										
2500	2200	2200	2500	57126	24.0	+000.4	-003.2	001.1	24.8	+003.2	-006
.3	014.1										
2525	2200	2200	2525	57130	24.0	+001.3	-007.4	001.2	24.8	+002.2	-007
.0	013.3										
2550	2200	2200	2550	57129	24.0	-001.6	-007.5	001.2	24.8	+000.4	-006
.7	013.8										
2575	2200	2200	2575	57123	24.0	-001.2	-004.6	001.2	24.8	+000.6	-006
.8	014.3										
2600	2200	2200	2600	57130	24.0	+003.5	-003.1	001.2	24.8	+001.8	-005
.9	014.8										
2625	2200	2200	2625	57133	24.0	+001.1	-005.5	001.2	24.8	-000.6	-007
.0	015.3										
2650	2200	2200	2650	57127	24.0	+002.1	+001.2	001.2	24.8	+005.1	-005
.0	016.6										
2675	2200	2200	2675	57125	24.0	+002.0	+007.8	001.2	24.8	+010.4	+000

2700	2200	2200	2700	57116	24.0	+005.7	+001.0	001.2	24.8	+009.2	-000
.5	013.9										
2725	2200	2200	2725	57119	24.0	+004.9	-002.1	001.1	24.8	+007.0	-006
.2	013.8										
2750	2200	2200	2750	57123	24.0	+007.5	-000.2	001.1	24.8	+007.2	-006
.4	013.4										
2775	2200	2200	2775	57125	24.0	+007.8	-003.2	001.2	24.8	+007.3	-007
.0	013.9										
2800	2200	2200	2800	57125	24.0	+005.9	+001.9	001.1	24.8	+009.0	-004
.1	013.6										
2825	2200	2200	2825	57119	24.0	+009.1	-000.1	001.1	24.8	+010.2	-003
.0	013.6										
2850	2200	2200	2850	57126	24.0	+006.3	-000.7	001.1	24.8	+006.8	-003
.4	013.7										
2875	2200	2200	2875	57122	24.0	+004.1	-002.6	001.2	24.8	+001.9	-006
.3	013.6										
2900	2200	2200	2900	57133	24.0	+004.7	-000.4	001.1	24.8	+004.1	-005
.4	015.4										
2925	2200	2200	2925	57130	24.0	+011.9	+008.5	001.1	24.8	+011.6	-003
.7	013.5										
2950	2200	2200	2950	57137	24.0	+009.1	+002.9	001.2	24.8	+011.8	-003
.1	014.6										
2975	2200	2200	2975	57133	24.0	+007.9	+002.8	001.2	24.8	+012.9	-002
.2	014.5										
3000	2200	2200	3000	57132	24.0	+007.8	+000.2	000.9	24.8	+005.7	-009
.8	013.7										
2000	2150	2150	2000	57128	24.0	-003.4	-002.5	001.1	24.8	-006.0	-002
.1	013.2										
2025	2150	2150	2025	57127	24.0	-006.6	-002.2	001.1	24.8	-008.4	-002
.7	014.3										
2050	2150	2150	2050	57129	24.0	-008.3	-003.7	001.1	24.8	-008.6	-001
.9	014.2										
2075	2150	2150	2075	57134	24.0	-007.2	-000.3	001.2	24.8	-007.3	-001
.7	014.6										
2100	2150	2150	2100	57137	24.0	-002.8	+000.1	001.1	24.8	-004.8	-000
.4	015.0										
2125	2150	2150	2125	57136	24.0	-007.2	+001.0	001.1	24.8	-005.8	-001
.2	014.3										
2150	2150	2150	2150	57143	24.0	-009.4	-002.9	001.2	24.8	-010.8	-004
.1	015.1										
2175	2150	2150	2175	57147	24.0	-008.1	-003.2	001.3	24.8	-009.0	-004
.3	014.8										
2200	2150	2150	2200	57148	24.0	-002.0	-001.0	001.3	24.8	-002.0	-003
.6	016.2										
2225	2150	2150	2225	57130	24.0	+003.3	-002.4	001.2	24.8	+003.2	-004
.0	015.1										
2250	2150	2150	2250	57127	24.0	+003.9	-002.6	001.1	24.8	+005.3	-004
.8	014.5										
2275	2150	2150	2275	57127	24.0	+004.4	-005.2	001.1	24.8	+003.4	-007
.0	014.8										
2300	2150	2150	2300	57134	24.0	+004.6	-005.6	001.2	24.8	+004.1	-006
.8	014.1										
2325	2150	2150	2325	57133	24.0	+006.3	-002.6	001.1	24.8	+005.3	-004
.3	014.0										
2350	2150	2150	2350	57133	24.0	+003.0	-003.1	001.1	24.8	+004.5	-005
.1	013.9										
2375	2150	2150	2375	57137	24.0	+002.2	-002.1	001.1	24.8	+002.5	-008
.2	013.4										
2400	2150	2150	2400	57143	24.0	+005.3	-003.2	001.1	24.8	+004.5	-005
.8	014.3										
2425	2150	2150	2425	57142	24.0	+006.7	+000.2	001.1	24.8	+006.7	-005
.4	013.7										
2450	2150	2150	2450	57139	24.0	+005.4	-000.8	001.1	24.8	+005.8	-006
.0	013.2										
2475	2150	2150	2475	57138	24.0	-001.8	-002.7	001.0	24.8	+001.1	-005



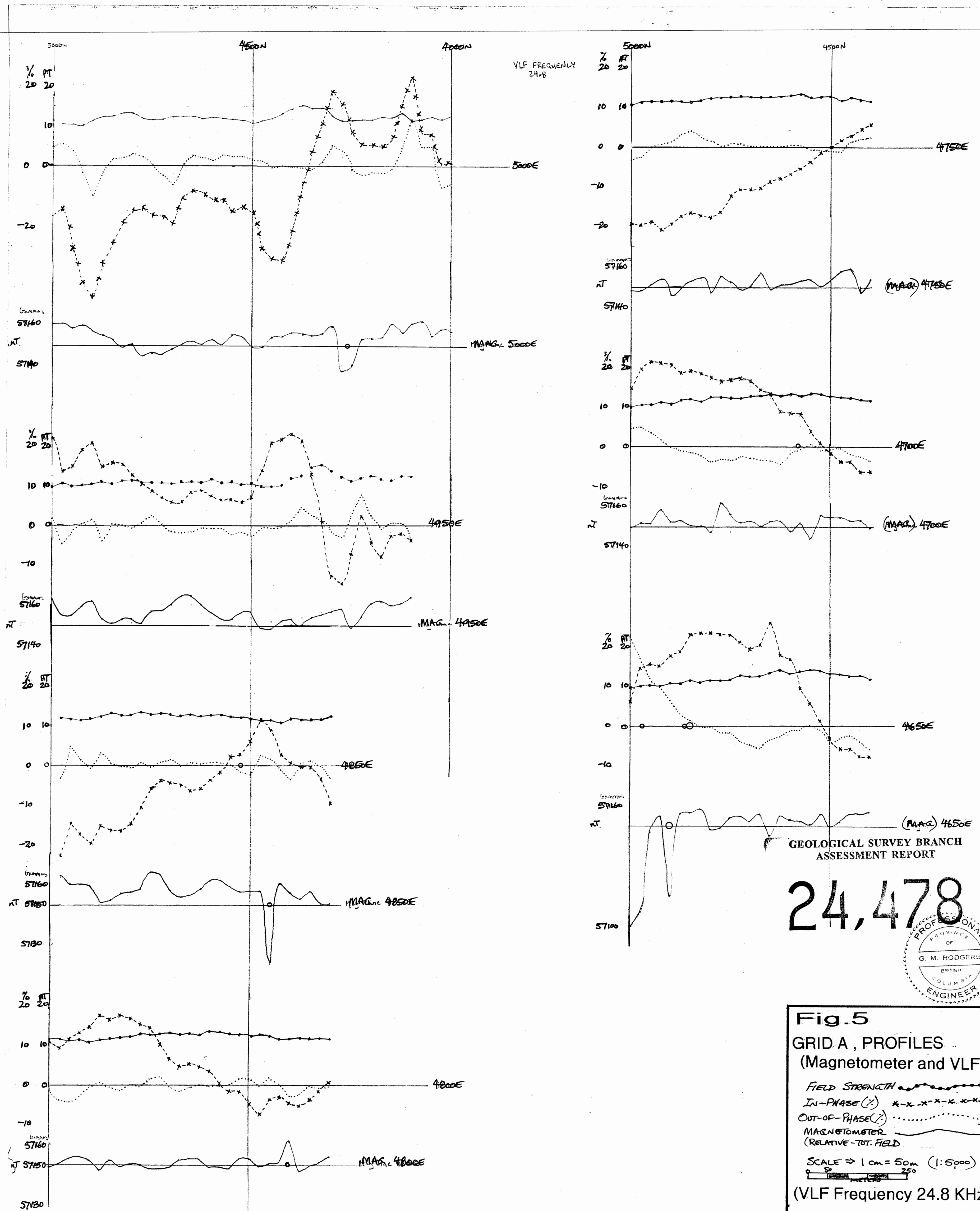
2700	2250	2250	2700	57163	24.0	+016.3	+002.6	001.2	24.0	+013.8	+001
.5	001.2										
2725	2250	2250	2725	57162	24.0	+010.5	+000.6	001.1	24.0	+009.8	+002
.5	001.1										
2750	2250	2250	2750	57161	24.0	+006.7	-001.1	001.1	24.0	+009.0	+000
.7	001.0										
2775	2250	2250	2775	57157	24.0	+007.5	+000.2	001.2	24.0	+007.4	-001
.0	001.1										
2800	2250	2250	2800	57157	24.0	+008.8	+002.9	001.1	24.0	+012.0	+000
.2	001.1										
2825	2250	2250	2825	57157	24.0	+010.4	-001.0	001.1	24.0	+009.4	+005
.3	001.0										
2850	2250	2250	2850	57155	24.0	+009.1	+003.5	001.0	24.0	+005.8	+000
.5	001.0										
2875	2250	2250	2875	57147	24.0	+008.6	+004.6	001.1	24.0	+009.5	+003
.0	001.1										
2900	2250	2250	2900	57149	24.0	+000.5	-000.8	001.1	24.0	+001.7	-004
.1	001.1										
2925	2250	2250	2925	57167	24.0	+002.3	-001.1	001.1	24.0	-000.3	-003
.9	001.1										
2950	2250	2250	2950	57158	24.0	-003.4	-003.4	001.2	24.0	-001.3	-001
.8	001.2										
2975	2250	2250	2975	57167	24.0	+000.5	-000.8	001.2	24.0	+007.4	-002
.6	001.3										
3000	2250	2250	3000	57159	24.0	+014.5	+005.1	001.2	24.0	+016.0	+002
.0	001.2										
3025	2100	2100	3025	57158	24.0	+017.1	+001.6	001.0	24.0	+010.3	+000
.8	001.0										
3050	2100	2100	3050	57158	24.0	+010.9	+003.7	001.0	24.0	+011.1	+004
.3	000.9										
3075	2100	2100	3075	57159	24.0	+001.6	+005.0	001.0	24.0	+007.6	-000
.1	000.9										
3100	2100	2100	3100	57165	24.0	-007.1	-006.8	001.1	24.0	-010.6	-006
.6	001.1										
3125	2100	2100	3125	57169	24.0	-003.1	+002.3	001.3	24.0	-003.1	+001
.4	001.2										
3150	2100	2100	3150	57166	24.0	+008.3	+003.1	001.2	24.0	+003.7	+001
.3	001.3										
3175	2100	2100	3175	57167	24.0	+009.1	+002.9	001.3	24.0	+007.6	+002
.9	001.3										
3200	2100	2100	3200	57164	24.0	+026.5	+007.4	001.2	24.0	+022.7	+005
.9	001.2										
3225	2100	2100	3225	57161	24.0	+030.8	+012.0	001.1	24.0	+027.6	+005
.6	001.1										
3250	2100	2100	3250	57159	24.0	+024.9	+003.4	001.0	24.0	+024.9	+008
.5	001.0										
3275	2100	2100	3275	57159	24.0	+014.5	+002.7	000.9	24.0	+013.4	+000
.0	001.0										
3300	2100	2100	3300	57160	24.0	+009.6	-003.2	001.0	24.0	+011.3	+002
.0	000.9										
3325	2100	2100	3325	57163	24.0	+007.2	-000.2	001.0	24.0	+008.2	+001
.2	001.0										
3350	2100	2100	3350	57162	24.0	+005.8	+000.2	001.0	24.0	+004.1	-002
.9	001.0										
3375	2100	2100	3375	57163	24.0	+002.7	+001.5	001.0	24.0	+001.8	-000
.6	001.0										
3400	2100	2100	3400	57169	24.0	+004.0	-003.1	001.0	24.0	+005.9	-002
.5	001.1										
3425	2100	2100	3425	57160	24.0	+006.2	-003.2	001.1	24.0	+004.0	+000
.9	001.0										
3450	2100	2100	3450	57164	24.0	+006.2	+000.3	001.1	24.0	+003.5	-000
.2	001.1										
3475	2100	2100	3475	57160	24.0	+007.7	+000.0	001.1	24.0	+005.1	+000
.0	001.1										
3500	2100	2100	3500	57164	24.0	+013.2	+000.0	001.1	24.0	+010.5	+001

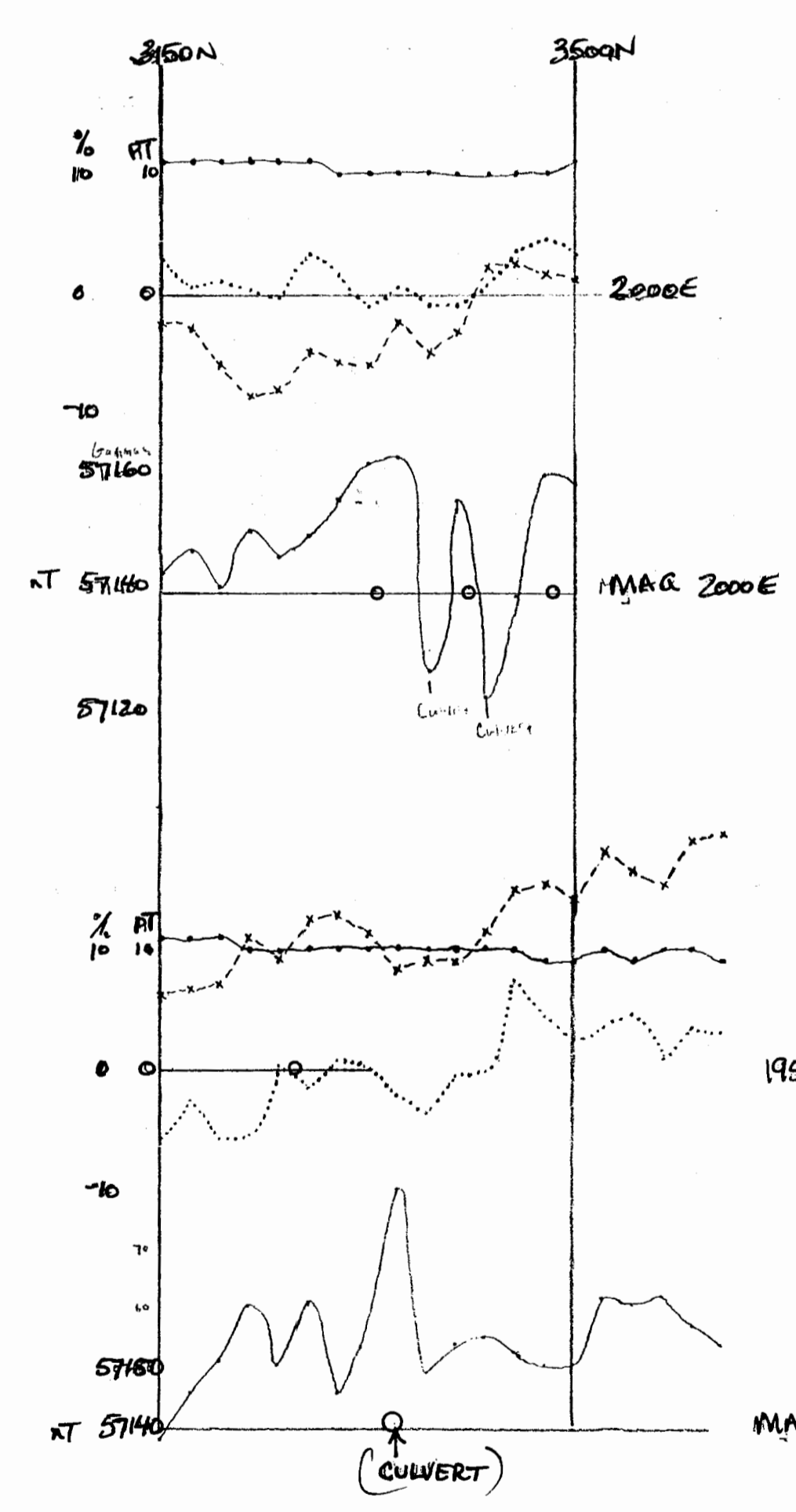
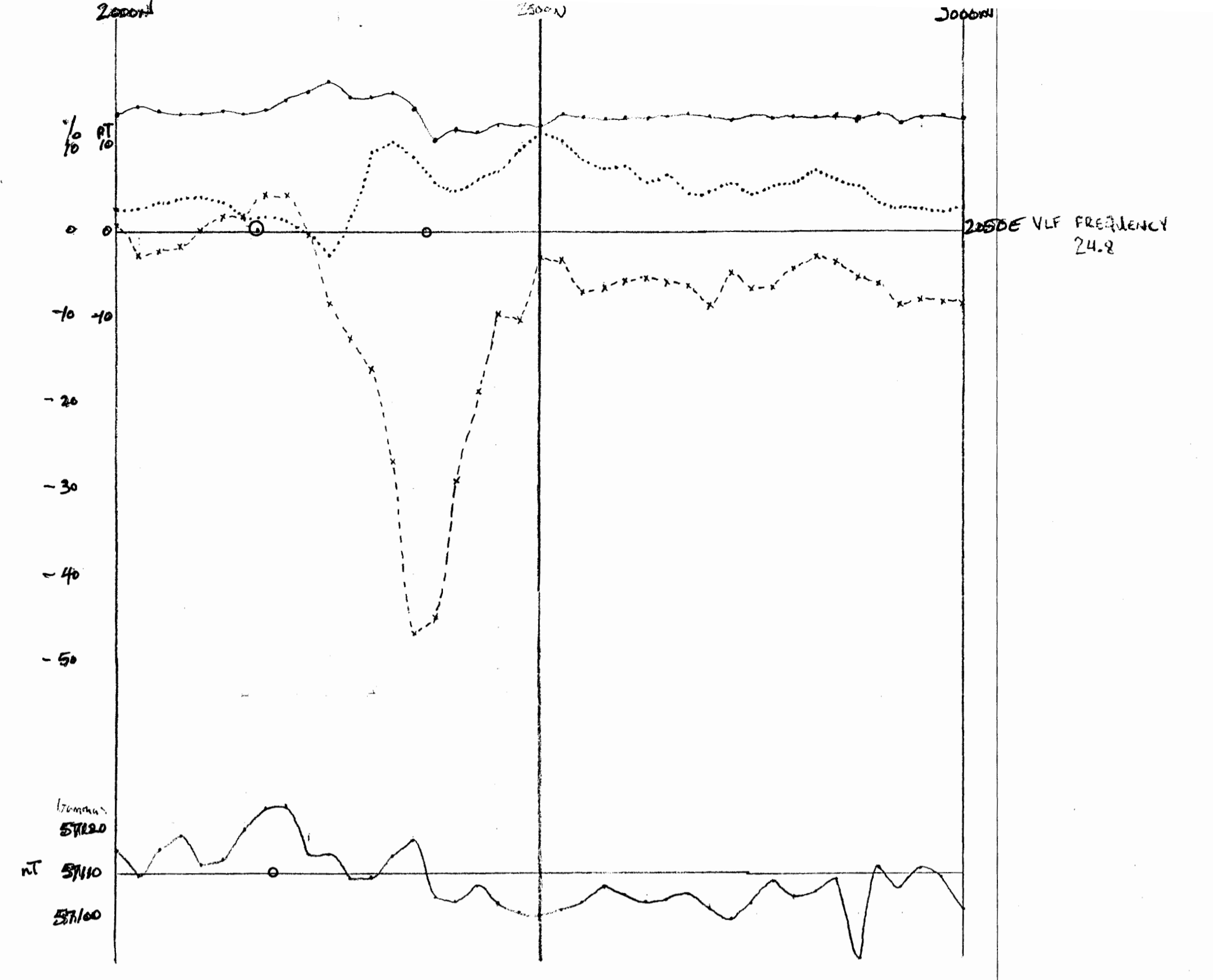
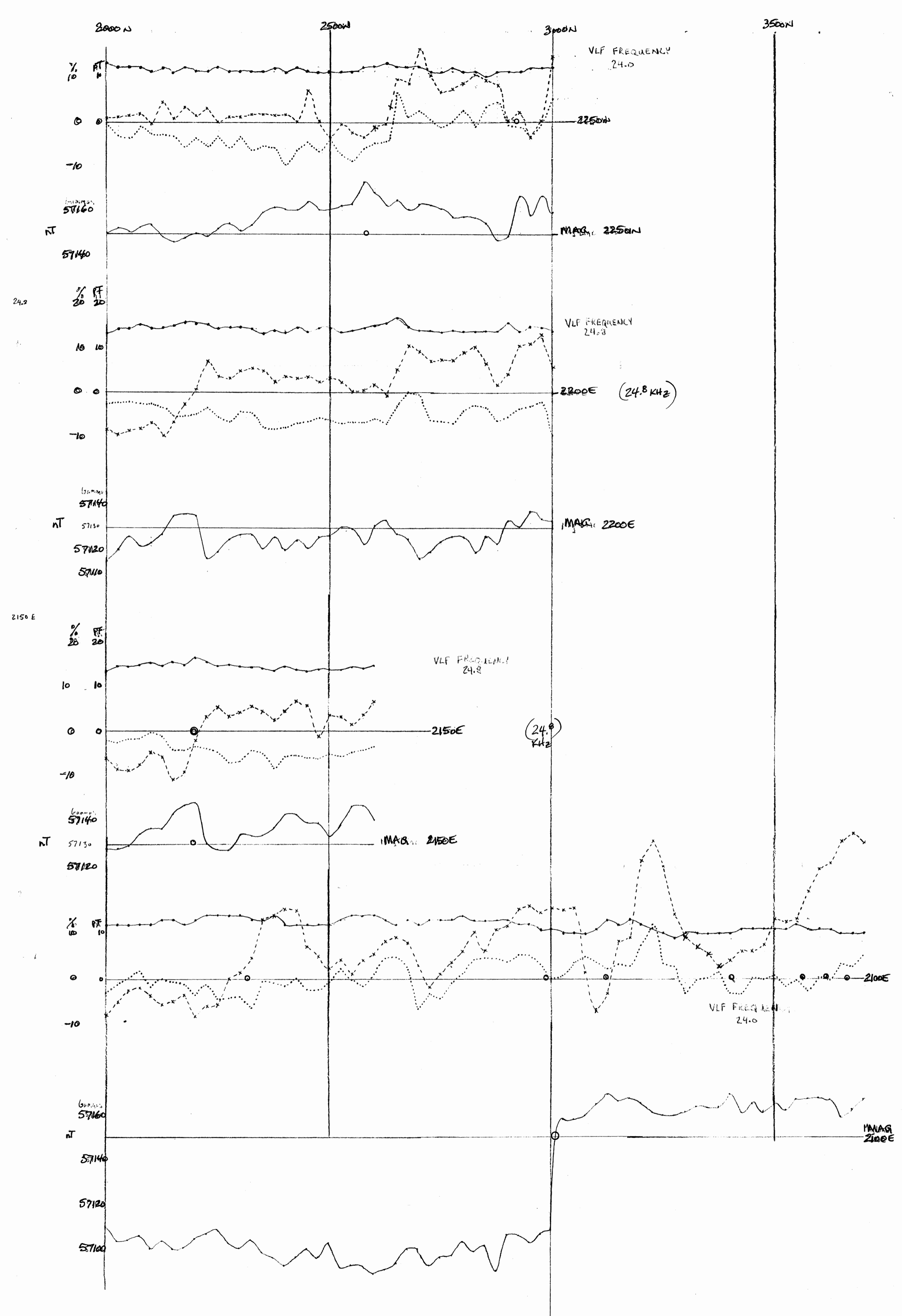
3525	2100	2100	3525	57161	24.0	+012.8	-001.7	001.1	24.0	+014.7	+000
.0	001.1										
3550	2100	2100	3550	57166	24.0	+013.5	-000.2	001.2	24.0	+014.6	-001
.8	001.1										
3575	2100	2100	3575	57167	24.0	+019.7	-002.5	001.1	24.0	+019.5	-000
.6	001.1										
3600	2100	2100	3600	57167	24.0	+024.6	+000.5	001.1	24.0	+023.9	+002
.6	001.1										
3625	2100	2100	3625	57164	24.0-	+026.1-	-000.2 -	001.1-	24.0-	+025.7-	+003
.3 -	001.0										
3650	2100	2100	3650	57158	24.0-	+031.0-	+003.3 -	001.0-	24.0-	+030.2-	+002
.6 -	001.0										
3675	2100	2100	3675	57162	24.0	+032.6	+002.9	001.0	24.0	+034.4	+002
.2	001.0										
3700	2100	2100	3700	57156	24.0	+030.4	+005.1	001.0	24.0	+034.1	+003
.8	000.9										
3500	2000	2000	3500	57158	24.0	+000.9	+002.4	001.0	24.0	+001.2	+003
.2	001.1										
3475	2000	2000	3475	57159	24.0	+000.8	+003.3	001.0	24.0	+001.7	+004
.8	001.0										
3450	2000	2000	3450	57139	24.0	+000.9	+002.4	001.0	24.0	+002.5	+003
.7	001.0										
3425	2000	2000	3425	57122	24.0	+004.0	+002.5	001.0	24.0	+002.2	+000
.8	001.0										
3400	2000	2000	3400	57154	24.0	-000.9	-000.9	001.0	24.0	-003.1	-000
.9	001.0										
3375	2000	2000	3375	57126	24.0	-004.3	-000.1	001.0	24.0	-005.0	-001
.0	001.0										
3350	2000	2000	3350	57162	24.0	-002.3	-000.1	001.0	24.0	-002.3	+000
.5	001.0										
3325	2000	2000	3325	57161	24.0	-003.2	+000.0	001.0	24.0	-005.8	-001
.1	001.0										
3300	2000	2000	3300	57155	24.0	-005.6	+001.1	001.0	24.0	-005.6	+001
.6	001.0										
3275	2000	2000	3275	57148	24.0	-008.0	+000.9	001.1	24.0	-004.9	+003
.2	001.1										
3250	2000	2000	3250	57146	24.0	-008.1	-001.8	001.1	24.0	-008.0	-000
.1	001.1										
3225	2000	2000	3225	57150	24.0	-008.9	+000.3	001.1	24.0	-008.5	+000
.5	001.1										
3200	2000	2000	3200	57140	24.0	-004.4	+002.3	001.1	24.0	-005.9	+001
.1	001.1										
3175	2000	2000	3175	57147	24.0	-007.5	+002.4	001.1	24.0	-002.9	+000
.7	001.1										
3150	2000	2000	3150	57143	24.0	-003.6	+005.4	001.1	24.0	-002.4	+003
.0	001.1										
3150	1950	1950	3150	57138	24.0	+005.7	-005.1	001.0	24.0	+006.3	-005
.8	001.1										
3175	1950	1950	3175	57146	24.0	+008.9	-005.0	001.1	24.0	+006.8	-002
.5	001.1										
3200	1950	1950	3200	57150	24.0	+007.8	-007.3	001.0	24.0	+007.1	-005
.9	001.1										
3225	1950	1950	3225	57160	24.0-	+011.0-	-002.7 -	001.1-	24.0-	+011.1-	-005
.6 -	001.0										
3250	1950	1950	3250	57150	24.0	+010.8	-001.9	001.0	24.0	+009.3	+000
.2	001.0										
3275	1950	1950	3275	57160	24.0	+012.3	+000.4	001.0	24.0	+012.7	-001
.7 -	001.0										
3300	1950	1950	3300	57146	24.0	+011.3	-000.2	001.0	24.0	+013.0	+000
.8	001.0										
3325	1950	1950	3325	57154	24.0-	+013.0-	-000.5 -	001.0-	24.0-	+011.4-	+000
.0 -	001.0										
3350	1950	1950	3350	57200	24.0	+011.7	-000.9	001.0	24.0	+008.4	-002
.2	001.0										
3375	1950	1950	3375	57148	24.0	+008.9	-002.7	001.0	24.0	+009.1	-002





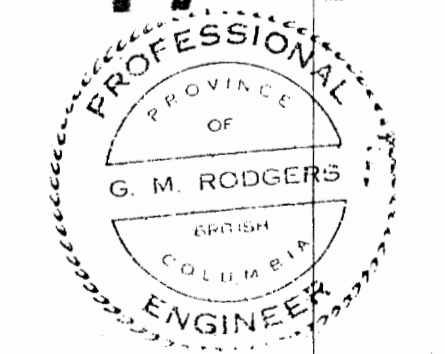






GEOLOGICAL SURVEY BRANCH  
ASSESSMENT REPORT

24,478



**Fig. 7 Grid B Profiles**  
(Magnetometer and VLF)

FIELD STRENGTH ———  
 IN-PHASE (x) \* \* \* \* \* OF  
 OUT-OF-PHASE (o) . . . . . VERT. COMPONENT

MAGNETOMETER  
(RELATIVE-TOT. FIELD)

SCALE = 1:5000  
 0 50 100 200 METERS

(VLF Frequency 20.0KHz) \*

\* EXCEPT LINES 2200E & 2150E (24.8 SEATTLE)

ANOMALIES: o SMALL, o MED, o LARGE