

GEOLOGICAL SURVEY BRANCH  
ASSESSMENT REPORTS

DATE RECEIVED  
OCT 10 1996

TECHNICAL ASSESSMENT REPORT

FOR

GALLERY RESOURCES LTD.

ON THE

MINERAL CLAIMS

JOJO 101, JOJO 102, JOJO 103, JOJO 104, JOJO 105

TENURE NUMBERS 205156, 205157, 205176, 205177,  
205178 ( TOTAL 72 UNITS )

LOCATED NEAR COTTONWOOD, B.C.

CARIBOO MINING DISTRICT

NTS 93 / G1

53 DEGREES 02 MINUTES NORTH  
122 DEGREES 02 MINUTES WEST

PREPARED BY:

FILMED

TERRY D. GARROW, P. GEO.

AUGUST 20, 1996  
GEOLOGICAL SURVEY BRANCH  
ASSESSMENT REPORT

24,581

## CONTENTS

	<u>PAGE</u>
1.0 INTRODUCTION	
1.1 PROPERTY LOCATION	1
1.2 ACCESS	1
1.3 MINERAL CLAIM TENURE	2
1.4 HISTORY AND ECONOMIC ASSESSMENT	3
2.0 OBJECTIVE AND SCOPE OF THIS TECHNICAL STUDY	4
3.0 DRILLING METHODS UTILIZED TO OBTAIN SAMPLES	5
4.0 SAMPLING PROCEDURES	
4.1 SAMPLING EQUIPMENT AND METHODS	5
4.2 GOLD RECOVERY METHODS	5
5.0 1996 EXPLORATION DRILLING & SAMPLING RESULTS	7
6.0 CONCLUSIONS	9
7.0 RECOMMENDATIONS	9
8.0 QUALIFICATIONS	10
9.0 STATEMENT OF COSTS	11

## ILLUSTRATIONS

<u>FIGURE</u>		<u>PAGE</u>
1	INDEX MAP - PROVINCIAL LOCATION 1: 8,000,000	1a
2	DISTRICT LOCATION MAP 1: 50,000	1b
3	MINERAL CLAIM MAP 1: 31,680	1c
4	DETAILED SITE PLAN 1: 1,000	2a
5	REVERSE CIRCULATION DRILL LOGS	APPENDIX

## 1.0 INTRODUCTION

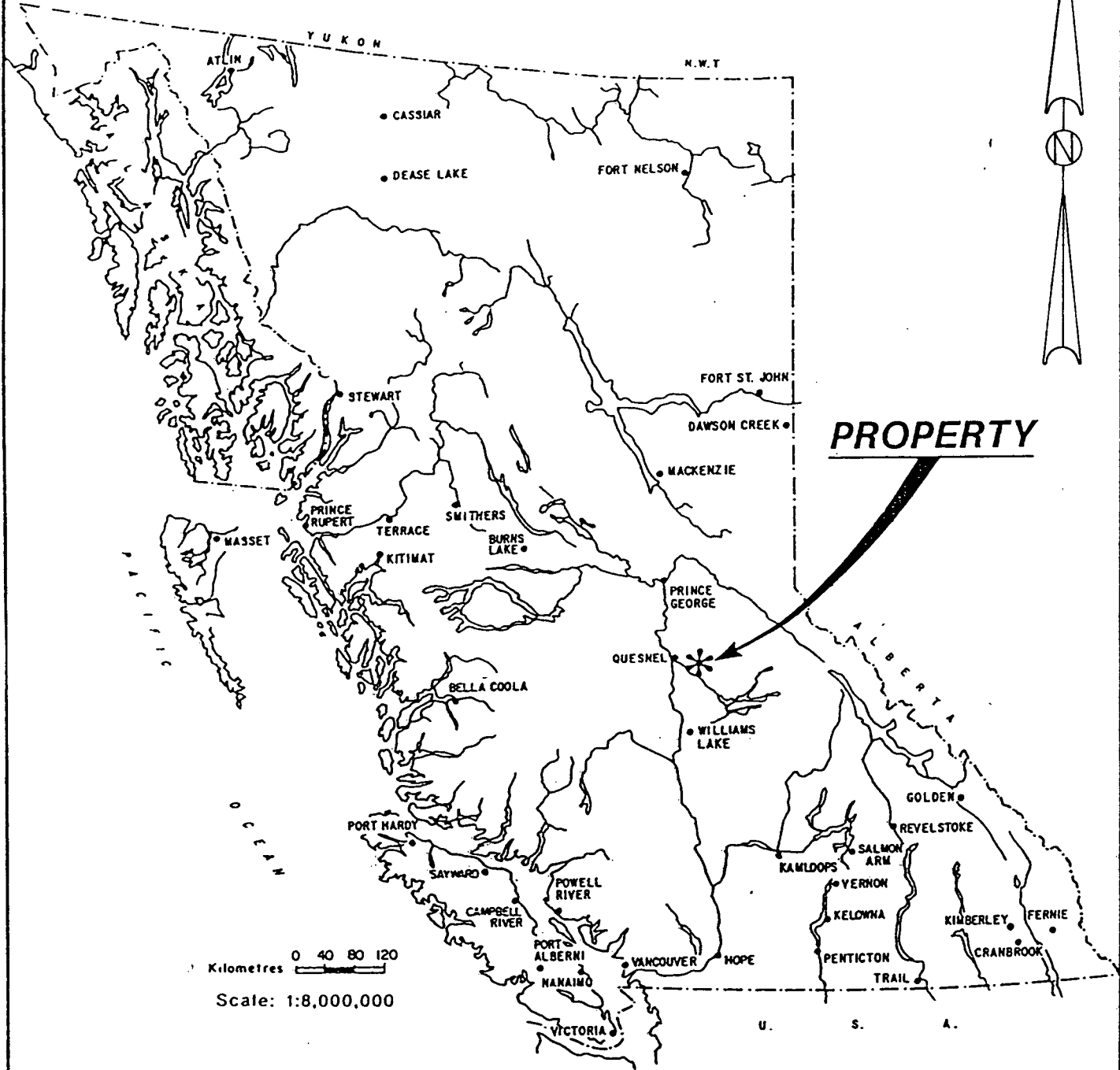
### 1.1 PROPERTY LOCATION

THE JOJO 101 TO 105 MINERAL CLAIMS ARE LOCATED APPROXIMATELY 35 KILOMETERS EAST OF QUESNEL, B.C. ON HIGHWAY 26 BETWEEN COTTONWOOD AND WINGDAM. HIGHWAY 26 PASSES THROUGH THE NORTHERN PORTION OF THE CLAIMS. LIGHTNING CREEK PASSES EAST-WEST THROUGH THESE CLAIMS, WITH THE SWIFT RIVER ON THE SOUTHWEST BOUNDARY AND MOUSTIQUE CREEK AT THE EAST BOUNDARY.


THESE MINERAL CLAIMS ARE LOCATED IN THE CARIBOO MINING DISTRICT, ON THE SOUTHEAST CORNER OF MAP SHEET 93 / G1, AT THE APPROXIMATE LATITUDE OF 53 DEGREES 02 MINUTES NORTH AND LONGITUDE OF 122 DEGREES 02 MINUTES WEST.

### 1.2 PROPERTY ACCESS

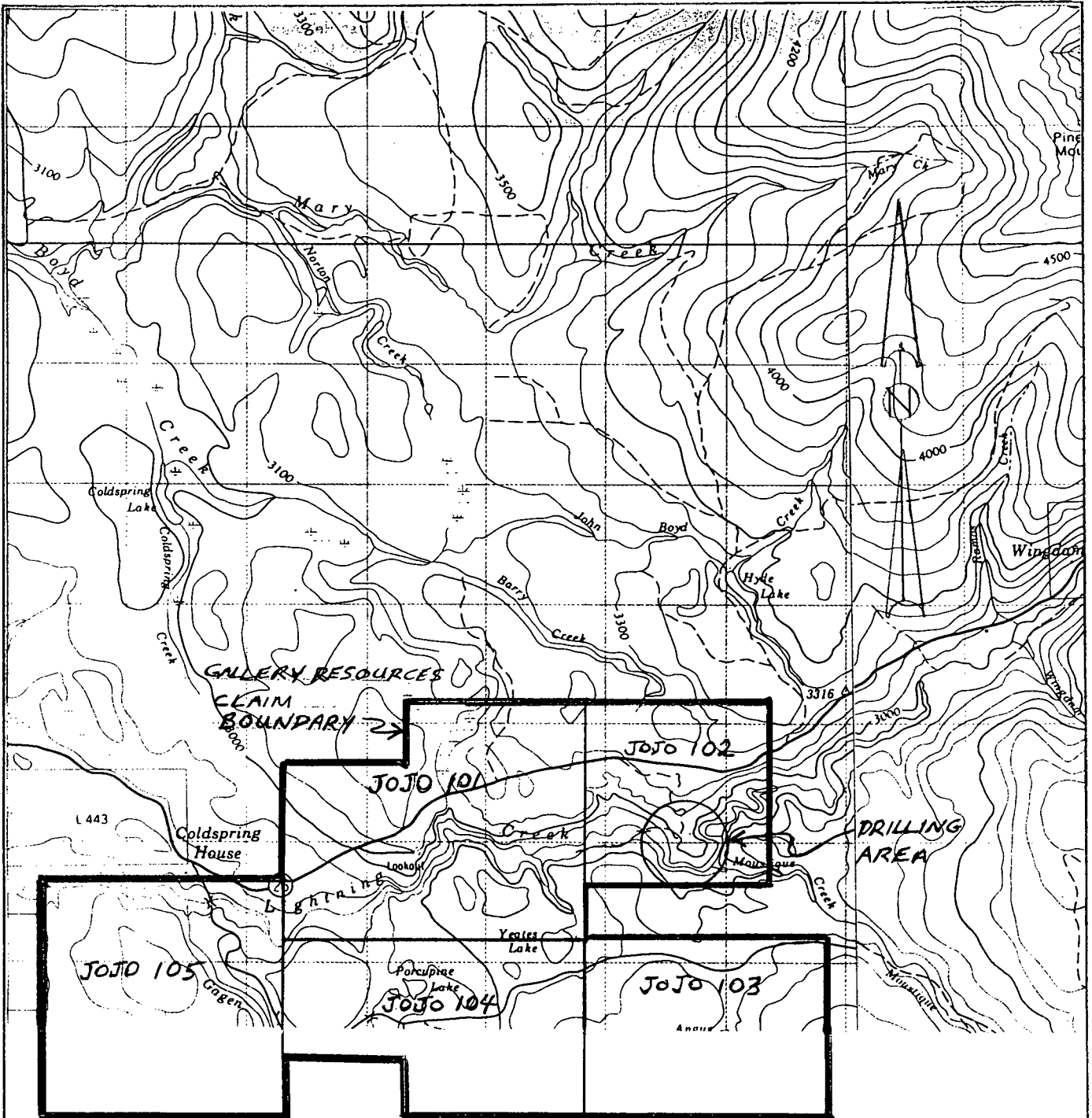
A PAVED HIGHWAY 26 PASSES THROUGH THESE MINERAL CLAIMS AND GOOD ACCESS IS AVAILABLE TO MOST OF THE CLAIMS BY WAY OF THE 1300 LOGGING ROAD AND MANY SMALL GRAVEL LOGGING AND MINING ROADS AROUND THE IMMEDIATE AREA. QUESNEL IS THE CLOSEST CITY APPROXIMATELY 35 KILOMETERS TO THE WEST, WITH ALL OF THE NECESSARY SERVICES TO SUPPLY AN EXPLORATION AND MINING PROJECT IN THIS AREA.



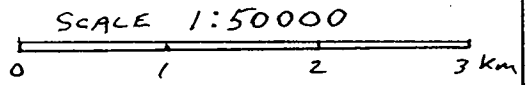
**PROPERTY**

0 40 80 120  
 Kilometres   
 Scale: 1:8,000,000

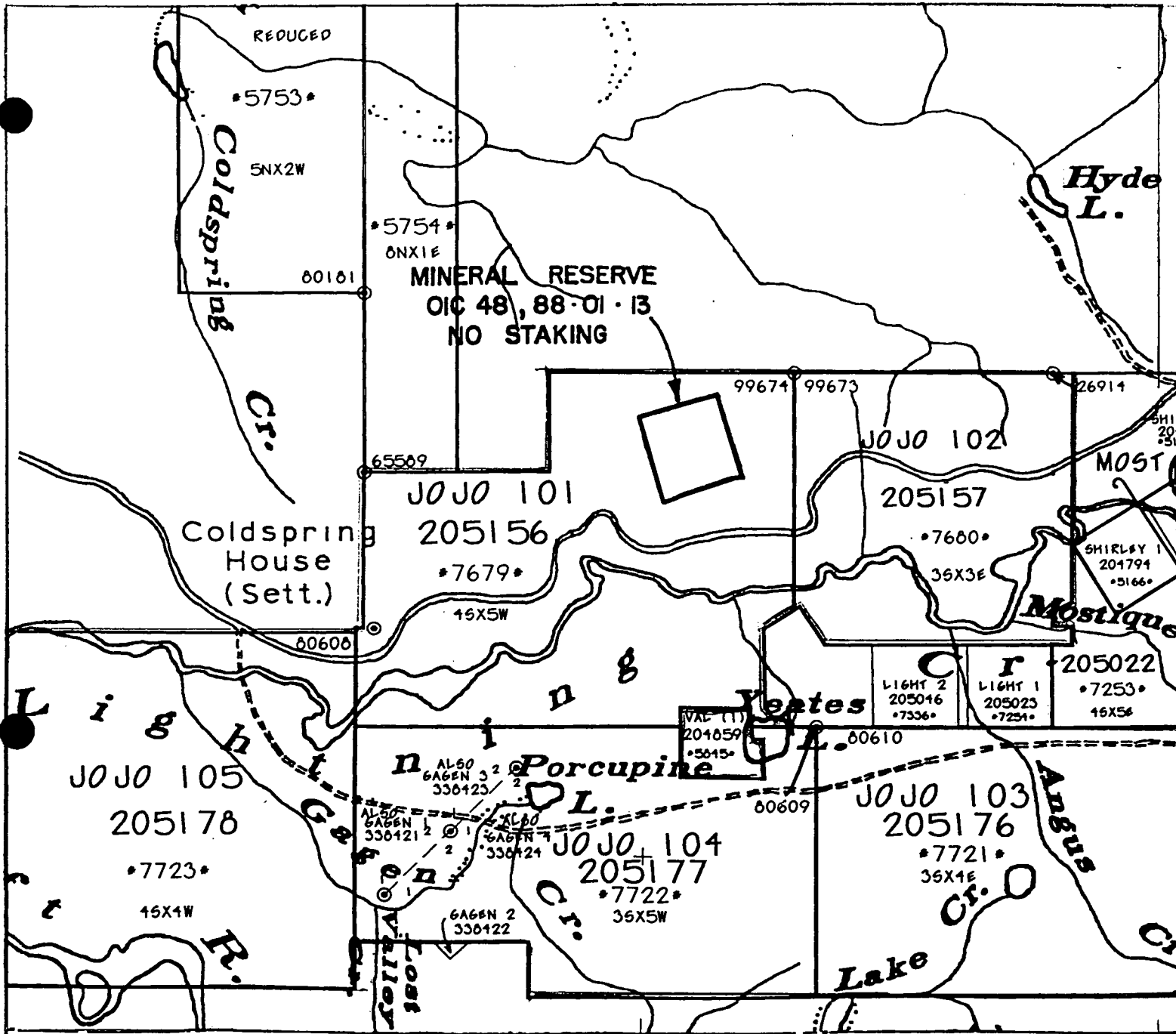
**GALLERY RESOURCES LTD.**  
**CARIBOO PROJECT**  
**PROVINCIAL LOCATION MAP**  
**JO JO MINERAL CLAIMS**  
**SCALE 1: 8,000,000**  
**AUGUST 20 / 96**



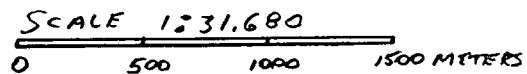
GALLERY RESOURCES LTD.  
 CARIBOO PROJECT  
 DISTRICT LOCATION MAP  
 JO JO MINERAL CLAIMS  
 SCALE 1: 50,000  
 AUGUST 20 / 96



93 G/1 N.T.S.  
 53° 02' N, 122° 02' W



GALLERY RESOURCES LTD.  
 CARIBOO PROJECT  
 MINERAL CLAIM MAP  
 JO JO MINERAL CLAIMS  
 SCALE 1: 31,680  
 AUGUST 20 / 96



93 G/1 N.T.S.  
 53°02' N, 122°02' W

### 1.3 MINERAL CLAIM TENURE

TENURE	NAME	TAG NO.	UNITS	EXPIRE	OWNER
205156	JO JO 101	7679	20	5/23/96	KOTZER
205157	JO JO 102	7680	9	5/23/96	KOTZER
205176	JO JO 103	7721	12	6/24/96	KOTZER
205177	JO JO 104	7722	15	6/24/96	KOTZER
205178	JO JO 105	7723	16	6/24/96	KOTZER

THE JO JO 101-105 MINERAL CLAIMS CONSIST OF 72 CONTIGUOUS UNITS IN FIVE CLAIM BLOCKS.

THIS PROPERTY IS CURRENTLY HELD UNDER LEASE AGREEMENT BY GALLERY RESOURCES LTD. OF VANCOUVER, B. C. , FROM THE OWNER MR FRANK KOTZER OF KOTZER ENTERPRISES LTD., QUESNEL, B. C.

THE AUTHOR HAS OBSERVED SEVERAL OF THE LEGAL CLAIM POSTS AND STUDIED THE FILING APPLICATIONS AND THESE CLAIMS APPEAR TO BE IN GOOD STANDING AND PROPERLY STAKED UNDER THE MINERAL TENURE ACT.

## 1.4 HISTORY AND ECONOMIC ASSESSMENT

THE REGION IS GENERALLY UNDERLAIN BY A THICK SEQUENCE OF METASEDIMENTS BELONGING TO THE HAZELTON GROUP OF UPPER TRIASSIC TO UPPER JURASIC AGE. DEFORMATION WITHIN THE NORTHWESTERLY PLUNGING LIGHTNING CREEK ANTICLINORIUM HAS CAUSED COMPLEX FOLDING, FRACTURING AND ASSOCIATED SILICIFICATION. SURFACE OXIDATION IS WIDESPREAD IN THE SEQUENCE. THE REGION HAS BEEN GLACIATED AND THICK DEPOSITS OF GLACIAL AND INTER GLACIAL GRAVELS ARE PRESENT IN LOCAL VALLEYS.

ALTHOUGH THE ORIGIN OF PLACER GOLD IN THE AREA IS NOT WELL UNDERSTOOD, MUCH OF THE GOLD WAS MOST LIKELY LIBERATED DURING EXTENSIVE EROSION OF THE UNDERLYING SEQUENCE WITH PRIMARY DEPOSITION OCCURRING PRIOR TO PLEISTOCENE GLACIATION. THE GRAVELS WERE LIKELY DEPOSITED DURING THE TERTIARY PERIOD IN DEEPLY INCISED CHANNELS AND ADJACENT BENCHES. IN MANY INSTANCES PLEISTOCENE GLACIATION REMOVED AND REWORKED MANY AREAS OF GOLD BEARING GRAVELS. THIS HAS RESULTED IN A NUMBER OF TYPES OF PLACER GOLD DEPOSITS IN THE AREA.

IN 1861, GOLD WAS DISCOVERED ON LIGHTNING CREEK WHICH INITIATED A FLURRY OF ACTIVITY IN THE STANLEY AREA AND RESULTED IN THE DISCOVERY OF MANY NEW PROSPECTS, UNCLUDING THE CURRENT GALLERY RESOURCES LTD. PLACER GOLD MINE THAT OVERLIES THE JO JO 101-105 MINERAL CLAIMS.

NO DETAILED GEOPHYSICS, GEOCHEMISTRY OR GEOLOGICAL EXPLORATION OR BEDROCK EVALUATION HAS BEEN COMPLETED PREVIOUS TO THIS PROJECT ON THE JO JO MINERAL CLAIMS. BECAUSE THE REPORTED GOLD PRODUCTION FROM THE OVERLYING PLACER PROPERTY IS HIGH AND BECAUSE THE LIGHTNING CREEK FAULT, THE SPANISH THRUST FAULT AND THE EUREKA THRUST FAULT ARE ALL MAJOR FAULT ZONES CROSSING OR CLOSE TO THIS PROPERTY, THE POTENTIAL FOR MINEABLE LODE GOLD IN THE BEDROCK IS VERY HIGH.



## 2.0 OBJECTIVE AND SCOPE OF THIS TECHNICAL STUDY

IN 1995 GALLERY RESOURCES LTD. BEGAN A FIVE YEAR EVALUATION AND PRODUCTION PLAN ON THE PLACER CLAIMS AS WELL AS THE MINERAL CLAIMS OF THIS PROPERTY.

IN 1995 FRONTIER GEOSCIENCES INC. OF NORTH VANCOUVER WERE RETAINED TO CARRY OUT DETAILED SEISMIC REFRACTION SURVEYS OVER LARGE AREAS OF THE PROPERTY TO OUTLINE BEDROCK PROFILES AND POTENTIAL BEDROCK FAULT ZONES. SUBSEQUENTLY, AN EXTENSIVE PROGRAM OF REVERSE CIRCULATION DRILLING WAS COMPLETED IN 1995 AND EARLY 1996 TO TEST FOR POTENTIAL TERTIARY GOLD BEARING GRAVELS ON THE PLACER LEASES AND GOLD BEARING BEDROCK IN THE MAJOR FAULT ZONES ON THE UNDERLYING MINERAL CLAIMS.

THIS TECHNICAL STUDY REPORTS THE RESULTS OF THE REVERSE CIRCULATION DRILLING AND SAMPLING OF THE BEDROCK OF THE JO JO MINERAL CLAIMS ( JO JO 101 TO 104, TENURE NUMBER 205156-7 & 205176-8)

THE FOLLOWING TABLE SUMMARIZES THE 1996 JO JO REVERSE CIRCULATION DRILLING PROGRAM

### 3.0 DRILLING METHODS UTILIZED TO OBTAIN SAMPLES

A REVERSE CIRCULATION DRILL WAS USED TO COMPLETE THE 19 DRILL HOLES OF THE 1996 JO JO MINERAL CLAIM EXPLORATION PROGRAM. DRILL ROADS WERE CONSTRUCTED WITH A D7 CAT TO ALLOW THE TRUCK MOUNTED DRILL TO ACCESS THE PROPOSED DRILL SITES AND TO ALLOW SAMPLES TO BE REMOVED TO A CENTRAL PROCESSING LOCATION ON THE PROPERTY. THE BASIC DRILLING PROCEDURE WAS TO ADVANCE THE 4 INCH TRI-CONE BIT BY ROTATION AND TO RAISE THE SAMPLES TO SURFACE USING AIR PRESSURE. A SAMPLE WAS COLLECTED FOR EACH 5 FOOT INTERVAL DRILLED. THROUGHOUT THE DRILL PROGRAM "OPEN " HOLES WERE DRILLED, UTILIZING NO DRILL CASING. BOTH THE OVERBURDEN SANDS, GRAVELS AND THE BEDROCK WERE SAMPLED.

### 4.0 SAMPLING PROCEDURES

#### 4.1 SAMPLING EQUIPMENT AND METHODS

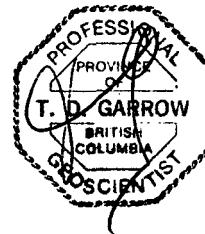
CHIP SAMPLES WERE CUT BY THE TRI-CONE DRILL BIT AND THEN BROUGHT TO THE SURFACE BY HIGH PRESSURE AIR WHICH WAS PASSED THROUGH A 3 FOOT CYCLONE, THAT BLEW THE AIR OFF AND ALLOWED THE CHIP SAMPLE TO FALL TO THE BOTTOM OF THE CYCLONE. THE SAMPLE FOR EACH 5 FOOT DRILL INTERVAL WAS COLLECTED BELOW THE CYCLONE IN 22 LITER PLASTIC BUCKETS. ALL SAMPLE BUCKETS WERE MARKED WITH HOLE NUMBER AND DEPTH AND LENGTH OF SAMPLE BEFORE TRANSPORTATION BY TRUCK TO A CENTRAL PROCESSING AREA. IF WATER WAS ENCOUNTERED IN THE DRILL HOLE AND THE SAMPLE BUCKETS CONTAINED EXCESS WATER, THEN AFTER A SUFFICIENT PERIOD OF SETTLING, THIS WATER WAS DECANTED OFF BEFORE THE SAMPLE WAS TRANSPORTED.

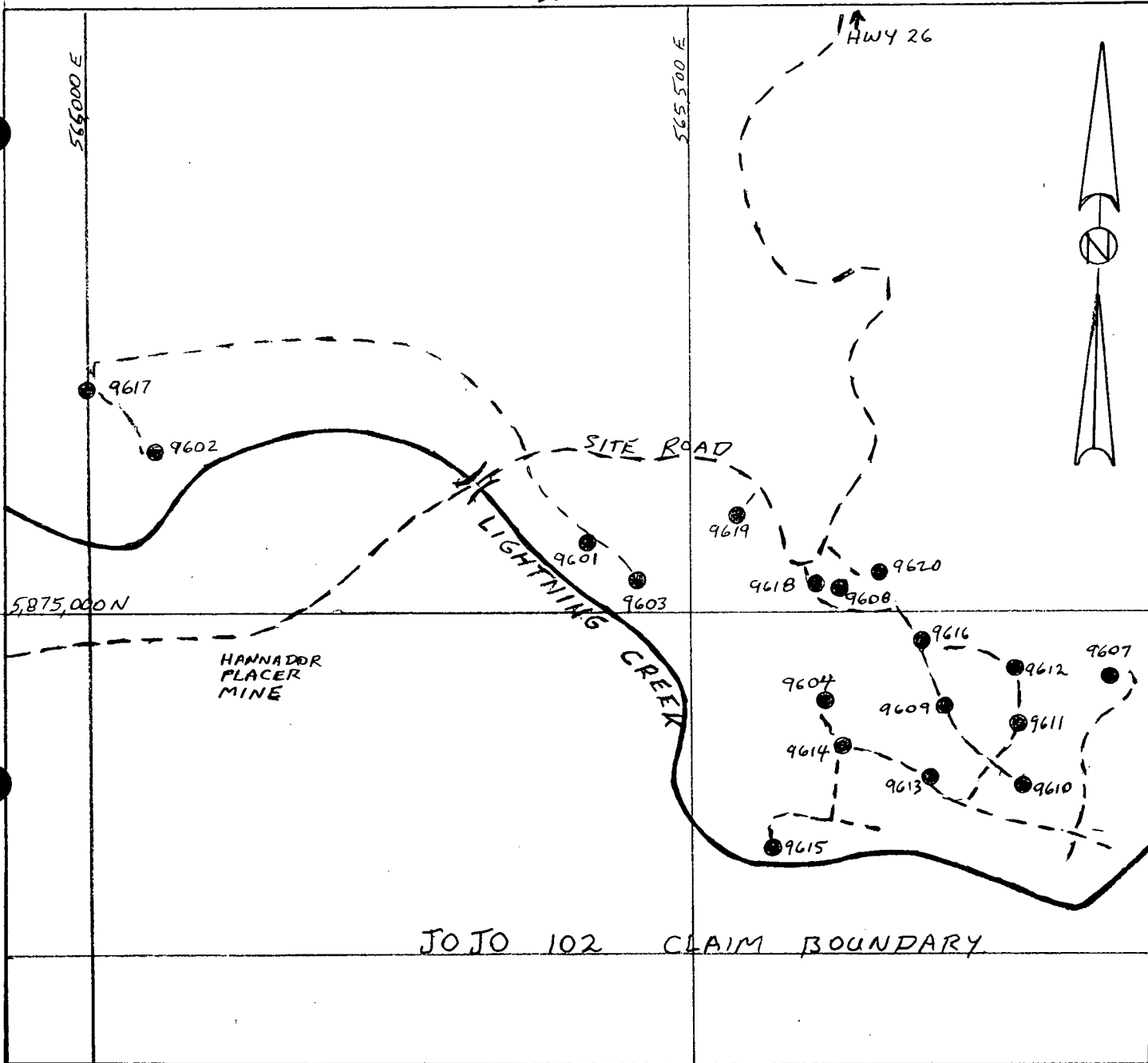
#### 4.2 GOLD RECOVERY METHODS

GALLERY RESOURCES HAVE BUILT A SMALL PERMANENT GRAVITY RECOVERY LABORATORY ON SITE AND THIS WAS UTILIZED TO TEST THE OVERBURDEN AND BEDROCK SAMPLES FROM THIS DRILLING PROGRAM. EACH CHIP SAMPLE OF BEDROCK WAS REDUCED TO APPROXIMATELY ONE QUARTER OF AN INCH OR LESS BY THE DRILLING PROCESS, THEREFORE EACH SAMPLE THEN WAS WASHED SLOWLY THROUGH A "DODD'S RIFFLE BOX". THE SLUICE BOX USED EXPANDED METAL SCREENING OVER A RUBBER MATTING WITH SHALLOW CROSS GROOVES TO CATCH THE FREE GOLD AND HEAVY METAL CONCENTRATE. THE FINAL CONCENTRATE WAS PANNED AND THE RESULTING GOLD FLAKES AND COLOURS WERE COUNTED AND EVALUATED.

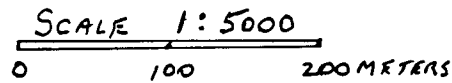
### 1996 JOJO DRILLING PROGRAM SUMMARY

DATE	HOLE #	NORTH METERS	EAST METERS	ELEV METERS	DEPTH BEDROC	LENGTH METERS
4/29/96	9601	5,875,050	565,415	867.7	-	18.3
4/30/96	9602	5,875,130	565,055	863.1	-	3.7
5/01/96	9602A	5,875,132	565,055	863.1	-	21.3
5/02/96	9603	5,875,025	565,452	868.1	-	23.8
5/03/96	9604	5,874,925	565,610	907.3	26.5	29.0
5/05/96	9607	5,874,942	565,845	903.5	5.2	6.1
5/06/96	9608	5,875,015	565,622	914.0	-	49.7
5/06/96	9609	5,875,920	565,710	915.5	19.8	20.4
5/07/96	9610	5,874,853	565,775	909.0	14.6	15.2
5/07/96	9611	5,874,905	565,770	912.4	19.2	19.8
5/08/96	9612	5,874,950	565,769	917.0	21.3	22.3
5/08/96	9613	5,874,860	565,696	906.5	8.5	10.1
5/09/96	9614	5,874,889	565,624	907.3	9.1	10.1
5/10/96	9615	5,874,798	565,566	896.3	15.5	16.2
5/11/96	9616	5,874,972	565,690	917.0	16.5	17.4
5/11/96	9617	5,875,180	565,000	869.0	24.4	24.7
5/12/96	9618	5,875,020	565,602	912.6	66.4	67.1
5/14/96	9619	5,875,075	565,538	899.8	37.8	39.0
5/14/96	9620	5,875,028	565,658	918.0	57.3	61.6
			TOTAL	DRILL	LENGTH	475.8 METERS 1561 FEET





GALLERY RESOURCES LTD.  
 CARIBOO PROJECT  
 DETAILED DRILL HOLE LOCATION MAP  
 JO JO MINERAL CLAIMS  
 SCALE 1:5,000  
 AUGUST 20 / 96



93 G / 1 N.I.S.

53°02' N, 122°02' W

## 5.0 1996 EXPLORATION DRILLING, SAMPLING RESULTS

NINETEEN REVERSE CIRCULATION DRILL HOLES WERE COMPLETED ON THE JO JO MINERAL CLAIMS DURING THE PERIOD OF APRIL 29 TO MAY 14, 1996 TOTTALLING 475.8 METERS (1561 FEET). FOURTEEN OF THESE DRILL HOLES REACHED AND SAMPLED BEDROCK, GIVING US VALUABLE INFORMATION REGARDING BEDROCK TYPE, QUARTZ VEINING, FAULTING AND MINERALIZATION.

SAMPLING VOLUMES WERE MEASURED AND RECORDED IN LOOSE CUBIC YARDS IN THE FIELD AND CONVERTED TO LOOSE CUBIC METERS IN THE DRILL LOGS. FORTY FOUR OF THE 22 LITER SAMPLE BUCKETS WERE FOUND TO CONTAIN ONE LOOSE CUBIC YARD OF SAMPLE MATERIAL AND THE SAME MARKED BUCKETS WERE UTILIZED THROUGHOUT THE DRILLING PROGRAM TO MAINTAIN CONSISTENCY.

THE THEORETICAL SAMPLE VOLUME FOR A FOUR INCH DIAMETER DRILL HOLE ALONG A FIVE FOOT SAMPLE INTERVAL IS 0.0176 CUBIC YARDS INSITU OR 0.0228 CUBIC YARDS LOOSE. THE ACTUAL SAMPLE VOLUMES MEASURED AVERAGED FOR THE 14 BEDROCK SAMPLES WAS 0.0131 CUBIC YARDS LOOSE. THEREFORE THE ACTUAL SAMPLE VOLUME RECOVERY WAS ONLY 58%.

FREE GOLD EVALUATION OF EACH SAMPLE WAS ACCOMPLISHED BY COUNTING FLAKES AND COLOURS AND ASSIGNING AN INCREASING NUMBER TO FLAKES AND COLOURS OF INCREASING DIAMETER, AND THEN RECORDING THE NUMBERS OF THESE SIZED GOLD PARTICLES IN THE DRILL LOGS.

LESS THAN 1 MILIMETER DIAMETER COLOUR	= TRACE
1.0 MILIMETER DIAMETER COLOUR	= # 1
1.5 MILIMETER DIAMETER COLOUR	= # 2
2.0 MILIMETER DIAMETER FLAKE	= # 3
2.5 MILIMETER DIAMETER FLAKE	= # 4
3.0 MILIMETER DIAMETER FLAKE	= # 5

NO ATTEMPT WAS MADE TO PLACE A DOLLAR PER CUBIC METER VALUE ON INDIVIDUAL SAMPLES BECAUSE THE VOLUMES OF GOLD IN THIS SIZED SAMPLE ARE VERY SMALL AND BECAUSE THIS TYPE OF DRILLING IS DESIGNED TO GIVE INDICATIONS OF GOLD VALUES ONLY. BY KEEPING THE VARIABLES CONSTANT THROUGHOUT THE DRILLING PROGRAM, A RELATIVE EVALUATION CAN BE OBTAINED FROM HOLE TO HOLE.

THE FOLLOWING TABLE SHOWS A SUMMARY OF SAMPLE DATA.

SUMMARY OF BEDROCK GEOLOGY, MINERALIZATION, QUARTZ VEINING  
AND FAULTING OUTLINED FROM THE 1996 JO JO CLAIM DRILLING

HOLE #	ROCK TYPE	GOLD	PYRITE	QTZ VEINS	FAULTING
9601	NO BEDROCK				
9602	NO BEDROCK				
9602A	NO BEDROCK				
9603	NO BEDROCK				
9604	BK SHALE	YES	YES	NO	NO
9607	BK ARGL	NO	NO	YES	YES
9608	NO BEDROCK				
9609	BK SHALE	YES	TRACE	YES	NO
9610	BK ARGL	YES	OXIDIZEDD	NO	YES
9611	BK SHALE	NO	YES	YES	YES
9612	BK SHALE	YES	NO	NO	NO
9613	BK SHALE	YES	NO	NO	NO
9614	BK ARGL	NO	TRACE	NO	NO
9615	BK ARGL	NO	OXIDIZEDD	NO	YES
9616	BK ARGL	NO	YES	NO	NO
9617	BK ARGL	NO	YES	NO	YES
9618	BK ARGL	YES	NO	NO	GRAPHITIC
9619	BK ARGL	NO	NO	NO	NO
9620	BK ARGL	YES	YES	NO	GRAPHITIC

## 6.0 CONCLUSIONS

THIS DRILLING PROGRAM HAS PROVEN THAT MUCH OF THE BEDROCK UNDER THE JO JO MINERAL CLAIMS IS ALL OF ONE GEOLOGICAL TYPE OF BLACK SHALE OR BLACK ARGILLITE FROM THE QUESNEL TERRAINE METASEDIMENTS LOCATED TO THE WEST OF THE EUREKA AND SPANISH THRUST FAULTS

APPROXIMATELY ONE HALF OF THE BEDROCK SAMPLES CONTAINED VARYING AMOUNTS OF PYRITE OR OXIDIZED EQUIVALENTS. THEREFORE, THIS BEDROCK IS LOCALLY WEAKLY MINERALIZED WITH PYRITE AND NO OTHER METALS WERE FOUND IN THE CONCENTRATE. EVIDENCE OF MINOR QUARTZ VEINING IN THE CHIP SAMPLES OCCURRED IN ONLY THREE PLACES AND EVIDENCE OF SHEARING OR FAULTING OCCURRED IN LESS THAN HALF OF THE BEDROCK SAMPLES.

APPROXIMATELY ONE HALF OF THE BEDROCK SAMPLES CONTAINED FREE GOLD IN VARYING QUANTITIES FROM SEVERAL VERY VERY SMALL COLOURS TO DRILL HOLE 9618 WITH 2 X #3 + 2 X #2 + 8 X # 2 / 2 + 6 TRACES OF GOLD. NONE OF THE GOLD FOUND IN THE BEDROCK SAMPLES WAS ATTACHED TO THE SHALE OR QUARTZ CHIPS, AND ALL OF THE GOLD FLAKES AND COLOURS APPEARED TO BE WORN AND ROUNDED OF DETRITAL OR PLACER ORIGIN. IT WAS CONCLUDED THAT THE BEDROCK METASEDIMENTS WERE NOT HOSTING LODE GOLD BUT THAT PLACER GOLD HAD BEEN DEPOSITED IN FRACTURES UP TO A METER DEEP IN THE BEDROCK.

## 7.0 RECOMMENDATIONS

THIS PRELIMINARY DRILLING PROGRAM ON THE JO JO MINERAL CLAIMS HAS NOT BEEN SUCCESSFUL IN LOCATING LODE GOLD; HOWEVER, THIS PROPERTY IS LOCATED ADJACENT TO MAJOR GEOLOGICAL THRUST FAULTING AND IN HIGHLY SHEARED METASEDIMENTS THAT COULD HOST SMALL HIGH GRADE EPITHERMAL GOLD DEPOSITS.

I WOULD RECOMMEND THAT IF FURTHER BEDROCK EXPLORATION PROGRAMS ARE UNDERTAKEN ON THE JO JO CLAIMS, THEN AIRBORNE AND GROUND GEOPHYSICS SHOULD BE COMPLETED TO LOCATE BEDROCK ANOMALIES, BEFORE ANY MORE DRILLING IS DONE.

## STATEMENT OF QUALIFICATIONS

I, TERRY DAVID GARROW, OF LIKELY IN THE PROVINCE OF BRITISH COLUMBIA, DO HEREBY CERTIFY;

1. THAT I AM A CONSULTING MINING GEOLOGIST WITH OFFICES AT SPANISH CREEK ROAD, BOX 197, LIKELY, BRITISH COLUMBIA.
2. THAT I AM A GRADUATE OF SIR WILFRED LAURIER UNIVERSITY-1966, AND THE UNIVERSITY OF SASKATCHEWAN-1969, WITH AN ADVANCED DEGREE IN GEOLOGY.
3. THAT I AM REGISTERED AS A PROFESSIONAL GEOSCIENTIST IN THE ASSOCIATION OF PROFESSIONAL ENGINEERS AND GEOSCIENTISTS OF BRITISH COLUMBIA.
4. THAT MY 25 YEARS OF CONTINUOUS GEOLOGICAL EXPERIENCE HAVE EXPOSED ME TO A WIDE RANGE OF SUPERVISORY, ENVIRONMENTAL AND GEOLOGICAL SITUATIONS, AND HAVE ALLOWED CONSIDERABLE FAMILIARIATION WITH THE EXPLORATION AND PRODUCTION OF BOTH LODE AND PLACER DEPOSITS.
5. THAT THIS REPORT IS WRITTEN WITH THE KNOWLEDGE GAINED FROM MY ASSOCIATION WITH GALLERY RESOURCES OVER THE LAST 4 YEARS AND MY CURRENT EMPLOYMENT AS A TECHNICAL CONSULTANT ON SITE.
6. THAT I HAVE NO INTEREST, DIRECT OR INDIRECT, IN THE PROPERTIES OR SECURITIES OF GALLERY RESOURCES LTD.

DATED AT VANCOUVER, B.C., THIS 23<sup>rd</sup> DAY OF September, 1996

TERRY DAVID GARROW, P. GEO

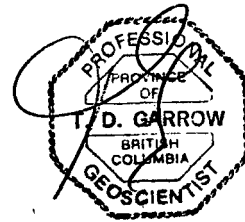
*Terry D. Garrow*





## 9.0 STATEMENT OF COSTS

REVERSE CIRCULATION DRILLING - 4 INCH TRICONE - NO CASING 1561 FEET @ \$14 PER FOOT	\$21,854.00
CONSUMABLES - FUEL, DRILL BITS, RODS, ETC.	3,600.00
GEOLOGIST - DAN ATKINSON - SAMPLE LOGGING	4,000.00
1996 JO JO DRILLING TOTAL EXPENDITURE	\$29,454.00



-12-

## APPENDIX

1996 JO JO MINERAL CLAIM  
REVERSE CIRCULATION DRILL LOGS

GALLERY RESOURCES LTD  
 NORTHING 5,875,050  
 COLLAR ELEVATION 867.7  
 START 4/29/96  
 CONTRACTOR DATELINE

DRILL HOLE 9601  
 EASTING 565,415  
 END OF HOLE 849.4  
 FINISH 4/29/96  
 LOGGED BY D.A.

DEPTH	DESCRIPTION	SAMPLE VOL	GOLD OZ/YD
0.00-1.52M (0-5)	POOR SAMPLE RECOVERY-CLEAN GRAVEL TO DARK GREY SAND 50% SHALE-40% SILICATES	0.0058	} } } 1 COLOR }
1.52-3.05M (5-10)	POOR SAMPLE RECOVERY-ABN CLAY AND FINE SAND	0.0058	}
3.05-4.57M (10-15)	POOR SAMPLE RECOVERY-LIGHTER GREY-40% SHALE-60% SILICATES	0.0153	0
4.57-17.07M (15-56)	NO SAMPLE-BLUE CLAY+VFG SAND	-	
17.07-18.28M (56-60)	60% COARSE ANGULAR SAND HOLE ABANDONDED @ 18.28M-NO RETURNS	0.0345	1 COLOR

EOH 18.28M (60.0FT)

GALLERY RESOURCES LTD  
 NORTHING 5,875,130  
 COLLAR ELEVATION  
 START 4/30/96  
 CONTRACTOR DATELINE

DRILL HOLE 9602  
 EASTING 565,055  
 END OF HOLE 859.4M  
 FINISH 5/30/96  
 LOGGED BY D.A.

DEPTH	DESCRIPTION	SAMPLE VOL-YD	GOLD OZ/YD
0.00-1.52M (0-5)	POOR SAMPLE RECOVERY-20% RND PEBBLES & BROWN SAND 60%	0.0058	0
1.52-3.05M (5-10)	CLAY @ 2.44M-NO RETURN-BLOWBY SAMPLE SHOVELLED OFF GROUND IS DK BROWN CLAYS AND GRAVELS	0.0187	2 X#1 FLAKE
3.05-3.66M (10-12)	CLAY AND BOULDER	0.0092	0

HOLE ABANDONED AT 3.66M (12FT)

MOVE DRILL 10 METERS TO 1+10N

0.00-2.44M (0-8)	POOR SAMPLE RECOVERY-20% RND PEBBLES-BROWN SAND-60% COARSE SAND-20% FINE SAND	-	-
2.44-21.34M (8-70)	CLAYS AND SILTS		
	HOLE ABANDONED @ 21.34M DUE TO LOST CIRCULATION NO SAMPLES		-

EOH 21.34M (70.0FT)

GALLERY RESOURCES LTD.  
 NORTHING 5,875,025  
 COLLAR ELEVATION 868.1M  
 START 5/01/96  
 CONTRACTOR DATELINE

DRILL HOLE 9603  
 EASTING 565,452  
 END OF HOLE 844.3M  
 FINISH 5/03/96  
 LOGGED BY D.A.

DEPTH	DESCRIPTION	SAMPLE VOL-YD	GOLD OZ/YD
0.00-1.52 (0-5)	DRILLED OLD LOG	0.0184	8
1.52-3.05 (5-10)	DK GREY SAND	0.0546	25
3.05-4.57 (10-15)	DK GREY SAND		}1X#1 }4X#1/2 }15COLOR
4.57-6.10 (15-20)	60% DK GREY SHALE 40% QTZ CLAY LENSE @ 5.49M		}8X#1 }12COLOR
6.10-18.29 (20-60)	CLAY TO 17.07M-SILT TO 18.28M NO SAMPLE RECOVERY	-	-
18.29-19.81 (60-65)	GREY BROWN GRAVELS-10% PEBBLE 60% MED TO COARSE SAND 40% SILT CLAY SEAM @ 19.20M	0.0431	0
19.81-21.34 (65-70)	GREY BROWN GRAVELS-SAME	0.0460	0
21.34-22.86 (70-75)	GREY BROWN GRAVELS-SAME	0.0684	0
22.86-23.77 (75-78)	GREY BROWN GRAVELS-SAME	0.0604	1COLOR

EOH 23.77M (78 FT) ABANDONDED DUE TO LACK OF DRILL POWER

GALLERY RESOURCES LTD  
 NORTHING 5,874,925  
 COLLAR ELEVATION 907.3  
 START 05/03/96  
 CONTRACTOR DATELINE

DRILL HOLE 9604  
 EASTING 565,610  
 END OF HOLE 878.3M  
 FINISH 05/03/96  
 LOGGED BY D.A.

DEPTH	DESCRIPTION	SAMPLE VOL	GOLD OZ/YD
0.00-3.05 (0-10)	POOR SAMPLE RECOVERY SAMPLE SHOVELLED OFF GROUND DK BROWN GLACIAL TILL 10% PEBBLES SUBANGULAR TO ROUND	0.0345	0
3.05-4.57 (10-15)	SANDY TILL-5% PEBBLES-50% COARSE SAND-45% SILT	0.0153	1COLOR
4.57-6.10 (15-20)	SANDY TILL-SAME	0.0115	2COLOR
6.10-7.62 (20-25)	YELLOW BROWN SILTY CLAY	0.0086}	2COLOR
7.62-9.14 (25-30)	YELLOW BROWN SILTY CLAY	0.0058}	
9.14-10.69 (30-35)	YELLOW BROWN SILTY CLAY	0.0086}	
10.69-12.19 (35-40)	YELLOW BROWN SILTY CLAY	0.0058}	
12.19-13.72 (40-45)	YELLOW BROWN SILTY CLAY + GRAVEL LENSE @ 13.11M	0.0029	0
13.72-15.24 (45-50)	SILT AND CLAY	0.0029	0
15.24-22.86 (50-75)	NO RECOVERY-CLAY	-	-
22.86-24.38 (75-80)	POOR RECOVERY-SILTY CLAY	0.0029	0
24.38-25.91 (80-85)	POOR RECOVERY-SILTY CLAY	0.0029	0
25.91-27.43 (85-90)	SILTY CLAY + BEDROCK @ 26.52M	0.0115	0
27.43-28.96 (90-95)	BEDROCK-BLACKSHALE-BLACK MUD-ABN F.G. PYRITE	0.0086	1COLOR

EOH @ 28.96M (95FT)

GALLERY RESOURCES LTD  
NORTHING 5,874,942  
COLLAR ELEVATION 903.5  
START 5/05/96  
CONTRACTOR DATELINE

DRILL HOLE 9607  
EASTING 565,845  
END OF HOLE 897.4  
FINISH 5/05/96  
LOGGED BY D.A.

DEPTH	DESCRIPTION	SAMPLE VOL	GOLD OZ/YD
0.00-1.52 (0-5)	DARK BROWN GRAVEL	0.0115	3 COLOR
1.52-3.05 (5-10)	DARK BROWN GRAVEL	0.0201	1 COLOR
3.05-4.57 (10-15)	DARK BROWN GRAVEL, 60% PEBBLES-MINORCLAY LENS	0.0518	{3X#2 {5X#1 {10 COLOR
4.57-6.10 (15-20)	4.57-5.18 QUARTZ RICH GRAVEL 5.18-6.10 BEDROCK-BLACK ARGILLITE FRACTURED WITH ABN QTZ VEIN CHIPS	0.0201	1 COLOR

EOH 6.10M (20FT)

GALLERY RESOURCES LTD  
 NORTHING 5,875,015  
 COLLAR ELEVATION 914.0  
 START 05/06/96  
 CONTRACTOR DATELINE

DRILL HOLE 9608  
 EASTING 565,622  
 END OF HOLE 864.3  
 FINISH 05/07/96  
 LOGGED BY D.A.

DEPTH	DESCRIPTION	SAMPLE VOL	GOLD OZ/YD
0.00-1.52 (0-5)	BROWN SILTY GRAVEL-30% PEBBLES	0.0115}	1 COLOR
1.52-3.05 (5-10)	BROWN SILTY GRAVEL-30% PEBBLES	0.0144}	
3.05-4.57 (10-15)	BROWN SILTY GRAVEL-30% PEBBLES	0.0115}	0
4.57-6.10 (15-20)	BROWN SILTY GRAVEL-30% PEBBLES	0.0144}	
6.10-7.62 (20-25)	BROWN SILTY GRAVEL-30% PEBBLES-INCREASED FG SAND	0.0173}	0
7.62-9.14 (25-30)	BROWN SILTY GRAVEL 25% WHITE QUARTZ PEBBLES	0.0144}	
9.14-10.67 (30-35)	BROWN SILTY GRAVEL 25% WHITE QUARTZ PEBBLES	0.0173	0
10.67-12.19 (35-40)	BROWN SILTY GRAVEL 25% WHITE QUARTZ PEBBLES	0.0173	0
12.19-15.24 (40-50)	NO SAMPLE-SILTY YELLOW SANDS	-	-
15.24-16.76 (50-55)	POOR RECOVERY-SILTY SAND	0.0058	0
16.76-30.48 (55-100)	NO SAMPLES-SILTY YELLOW SAND	-	-
30.48-49.68 (100-163)	NO SAMPLE-CLAY & GREY SANDS	-	-

EOH 49.68M (163FT)



GALLERY RESOURCES LTD  
 NORTHING 5,875,920  
 COLLAR ELEVATION 915.5  
 START 05/08/96  
 CONTRACTOR DATELINE

DRILL HOLE 9609  
 EASTING 565,710  
 END OF HOLE 895.0  
 FINISH 05/08/96  
 LOGGED BY D.A.

DEPTH	DESCRIPTION	SAMPLE VOL	GOLD OZ/YD
0.00-1.52 (0-5)	REDDISH SILTY GRAVEL 30% PEBBLES-60% F SANDS	0.0115	4 COLOR
1.52-3.05 (5-10)	GREY AND RED SILTY GRAVEL 30% PEBBLES (SHALE & QUARTZ)	0.0173	{6X#1 {6 COLOR
3.05-4.57 (10-15)	GREY GRAVELS-40% PEBBLES (25% SHALE, 75% QUARTZ)	0.0115	1 COLOR
4.57-6.10 (15-20)	GREY GRAVELS-50% PEBBLES (30% SHALE-70% QUARTZ)	0.0173	0
6.10-7.62 (20-25)	YELLOWISH SANDY SILT (20% COARSE SAND)	-	-
7.62-9.14 (25-30)	YELLOWISH SANDY SILT (20% COARSE SAND)	-	-
9.14-10.67 (30-35)	YELLOWISH SANDY SILT (20% COARSE SAND)	0.0058}	2 COLOR
10.67-12.19 (35-40)	YELLOWISH SANDY SILT (20% COARSE SAND)	0.0058}	
12.19-13.72 (40-45)	YELLOWISH SANDY SILT (20% COARSE SAND)	0.0115}	0
13.72-15.24 (45-50)	YELLOWISH SANDY SILT (20% COARSE SAND)	0.0144}	
15.24-16.76 (50-55)	YELLOWISH SANDY SILT (20% COARSE SAND)	0.0077}	1 COLOR
16.76-18.28 (55-60)	YELLOWISH SANDY SILT (20% COARSE SAND)	0.0058}	
18.28-19.81 (60-65)	YELLOWISH SANDY SILT (20% COARSE SAND)	0.0201}	{1X#2 {2 COLOR
19.81-20.42 (65-67)	BLACK SHALE-BEDROCK @ 19.81M-TRACES OF VFG DISSEMINATED PYRITE AND QUARTZ CHIPS	0.0077}	

EOH 20.42M (67FT)

GALLERY RESOURCES LTD  
 NORTHING 5,874,853  
 COLLAR ELEVATION 909  
 START 05/07/96  
 CONTRACTOR DATELINE

DRILL HOLE 9610  
 EASTING 565,775  
 END OF HOLE 893.8  
 FINISH 05/07/96  
 LOGGED BY D.A.

DEPTH	DESCRIPTION	SAMPLE VOL	GOLD OZ/YD
0.00-1.52 (0-5)	REDDISH BROWN SILTY GRAVELS 20% PEBBLES (SHALE-QUARTZ) 40% SAND-40% SILT	0.0115	1
1.52-3.05 (5-10)	REDDISH BROWN SILTY GRAVELS 20% PEBBLES (SHALE-QUARTZ) 40% SAND-40% SILT	0.0144	10 COLOR
3.05-4.57 (10-15)	REDDISH GREY GRAVELS 15% PEBBLES-90% MED SAND TO SILT	0.0115	1 COLOR
4.57-6.10 (15-20)	REDDISH GREY GRAVELS 10% PEBBLES	0.0077	1 COLOR
6.10-7.62 (20-25)	REDDISH GREY SILTY GRAVELS 10% PEBBLES-90% MED SAND TO SILT	0.0115}	1 COLOR
7.62-9.14 (25-30)	REDDISH GREY SILTY GRAVELS 10% PEBBLES-90% MED SANDS TO SILTS	0.0058}	
9.14-10.67 (30-35)	YELLOW SILTY CLAY	0.0077}	0
10.67-12.19 (35-40)	YELLOW SILTY CLAY-MINOR SAND	0.0086}	
12.19-13.72 (40-45)	REDDISH BROWN GRAVEL 60% PEBBLES-40% MED TO COARSE SANDS	0.0043	5 COLOR
13.72-15.24 (45-50)	45-48' REDDISH BROWN GRAVEL 48-50' BEDROCK BLACK ARGILLITE FRACTURED AND OXIDIZED, NO QUARTZ, NO PYRITE	0.0158	1 COLOR

EOH 15.24M (50FT)

GALLERY RESOURCES LTD  
 NORTHING 5,874,905  
 COLLAR ELEVATION 912.4  
 START 05/07/96  
 CONTRACTOR DATELINE

DRILL HOLE 9611  
 EASTING 565,770  
 END OF HOLE 892.6  
 FINISH 05/07/96  
 LOGGED BY D.A.

DEPTH	DESCRIPTION	SAMPLE VOL	GOLD OZ/YD
0.00-1.52 (0-5)	DK GREY COBBLE CONGLOMERATE 75% PEBBLES (SHALE & QUARTZ)	0.0201	15 COLOR
1.52-3.05 (5-10)	DK GREY COBBLE CONGLOMERATE INCREASED SAND AT BOTTOM	0.0316	3 COLOR
3.05-4.57 (10-15)	YELLOW SILTY CLAY TILL	0.0173	0
4.57-6.10 (15-20)	YELLOW SILTY CLAY TILL	0.0201	0
6.10-7.62 (20-25)	SILTY CLAY TILL	0.0058}	0
		}	
7.62-9.14 (25-30)	SANDY TILL	0.0077}	
9.14-10.69 (30-35)	SILTY TILL	0.0077}	1 COLOR
		}	
10.69-12.19 (35-40)	SILTY TILL	0.0077}	
12.19-13.72 (40-45)	SILTY TILL	0.0058}	0
		}	
13.72-15.24 (45-50)	GRAVELY TILL	0.0029}	
15.24-16.76 (50-55)	SILTY TILL	0.0043}	0
		}	
16.76-18.28 (55-60)	SILTY TILL	0.0029}	
18.28-19.81 (60-65)	SILTY TILL TO 19.20M BEDROCK 19.20-19.81-BK SHALE + QUARTZ AND ABN PYRITE, VERY FRACTURED	0.0201	0

EOH 19.81M (65FT)

GALLERY RESOURCES LTD  
 NORTHING 5,874,950  
 COLLAR ELEVATION 917.0  
 START 5/08/96  
 CONTRACTOR DATELINE

DRILL HOLE 9612  
 EASTING 565,769  
 END OF HOLE 894.7  
 FINISH 5/08/96  
 LOGGED BY D.A.

DEPTH	DESCRIPTION	SAMPLE VOL	GOLD OZ/YD
0.00-1.52 (0-5)	GREY SILTY GRAVEL-60% ROUND PEBBLES (SHALE & QUARTZ)	0.0077	0
1.52-3.05 (5-10)	GREY SILTY GRAVEL TILL	0.0201	0
3.05-4.57 (10-15)	GREY SILTY GRAVEL TILL	0.0173	0
4.57-6.10 (15-20)	GREY CLAY TILL	0.230	1 COLOR
6.10-7.62 (20-25)	GREY CLAY TILL INCREASED CLAY	0.0144}	0
7.62-9.14 (25-30)	GREY CLAY TILL	0.0077}	
9.14-13.72 (30-45)	NO SAMPLE RECOVERY-CLAY TILL	-	-
13.72-15.24 (45-50)	SANDY GRAVEL-50% ANGULAR SAND & SMALL PEBBLES	0.0086	0
15.24-18.28 (50-60)	NO SAMPLE RECOVERY-CLAY TILL	-	-
18.28-19.81 (60-65)	CLAY TILL CHANGING TO RED GRAVELS @ 19.20M	0.0029}	0
19.81-21.34 (55-70)	RED GRAVEL-ABN BOULDERS	0.0345}	
21.34-22.25 (70-73)	BEDROCK AT 21.34M-BK SHALES NO QUARTZ VEINING, NO PYRITE	0.0077	{1X#2 {8X#1 {8 COLOR

EOH 22.25M (73 FT)

GALLERY RESOURCES LTD  
 NORTHING 5,874,860  
 COLLAR ELEVATION 906.5  
 START 5/08/96  
 CONTRACTOR DATELINE

DRILL HOLE 9613  
 EASTING 565,696  
 END OF HOLE 896.4  
 FINISH 5/09/96  
 LOGGED BY A.D.

DEPTH	DESCRIPTION	SAMPLE VOL	GOLD OZ/YD
0.00-1.52 (0-5)	GRAVELS	0.0077	0
1.52-3.05 (5-10)	SANDY GRAVELS-70% MED SAND 30% PEBBLES	0.0278	0
3.05-4.57 (10-15)	NO SAMPLE RECOVERY-CLAY TILL	-	-
4.57-6.10 (15-20)	CLAY TILL GRADING TO YELLOW GRAVEL-10% PEBBLES	0.0115}	0
6.10-7.62 (20-25)	CLAY TILL-GRADING TO YELLOW GRAVEL-INCREASING GRAVELY	0.0077}	
7.62-9.14 (25-30)	SILTY GRAVEL TO 8.53M-BLACK SHALES, BROKEN & FRAC AT 8.53M	0.0144	{1X#1 {10 COLOR
9.14-10.06 (30-33)	SOLID BEDROCK-BLACK SHALE NO QUARTZ, NO FRACTURING	0.0058	{1X#1 {1X#1/2 {3 COLOR

EOH 10.06M (33FT)



GALLERY RESOURCES LTD  
 NORTHING 5,874,798  
 COLLAR ELEVATION 896.3  
 START 5/10/96  
 CONTRACTOR DATELINE

DRILL HOLE 9615  
 EASTING 565,566  
 END OF HOLE 880.1  
 FINISH 5/10/96  
 LOGGED BY D.A.

DEPTH	DESCRIPTION	SAMPLE VOL	GOLD OZ/YD
0.00-1.52 (0-5)	GLACIAL TILL-SAND-BOULDERS	0.0058	4
1.52-3.05 (5-10)	GLACIAL TILL-INCREASED SAND	0.0259	1
3.05-4.57 (10-15)	GLACIAL TILL-25% PEBBLES	0.0029}	0
4.57-6.10 (15-20)	CLAY TILL	0.0173}	
6.10-7.62 (20-25)	CLAY TILL	0.0043}	0
7.62-9.14 (25-30)	CLAY TILL	0.0029}	
9.14-10.67 (30-35)	CLAY TILL	0.0144}	0
10.67-12.19 (35-40)	CLAY TILL	0.0058}	
12.19-13.72 (40-45)	SILTY GRAVELS	0.0029}	0
13.72-15.24 (45-50)	SILTY GRAVELS	0.0058}	
15.24-16.15 (50-53)	BEDROCK @ 15.54M (51FT) BLACK ARGILLITE, SHEARED AND OXIDIZED	0.0115	0

EOH 16.15M (53FT)

GALLERY RESOURCES LTD  
 NORTHING 5,874,972  
 COLLAR ELEVATION 917  
 START 5/11/96  
 CONTRACTOR DATELINE

DRILL HOLE 9616  
 EASTING 565,690  
 END OF HOLE 899.6  
 FINISH 5/11/96  
 LOGGED BY D.A.

DEPTH	DESCRIPTION	SAMPLE VOL	GOLD OZ/YD
0.00-1.52 (0-5)	VERY GRAVELLY TILL	0.0115	0
1.52-3.05 (5-10)	SILTY GRAVEL	0.0144	0
3.05-4.57 (10-15)	SILTY SAND	0.0058}	0
4.57-6.10 (15-20)	SILTY CLAY	0.0374}	
6.10-7.62 (20-25)	YELLOW SILTY CLAY-GRAVEL @ END	0.0201}	{1X#2
7.62-9.14 (25-30)	PURE CLAY	0.0259}	{2X#1
9.14-10.67 (30-35)	SILTY GRAVEL-75% ANG PEBBLES	0.0288}	{1 COLOR
10.67-12.19 (35-40)	YELLOW SILTY SANDS + CLAY	0.0259}	1
12.19-13.72 (40-45)	YELLOW SILT + SILTY GRAVEL @ END	0.0230}	0
13.72-15.24 (45-50)	YELLOW SILT	0.0288}	
15.24-16.76 (50-55)	SILTY GRAVELS TO 16.46M (54FT) BEDROCK @ 16.46M (54FT)	0.0345	0
16.76-17.37 (55-57) (55-75)	BEDROCK-DK GREY-BLACK ARGILLITES, VF PYRITE CUBES	0.0115	0

EOH 17.37M (57FT)



GALLERY RESOURCES LTD  
 NORTHING 5,875,180  
 COLLAR ELEVATION 869.0  
 START 5/11/96  
 CONTRACTOR DATELINE

DRILL HOLE 9617  
 EASTING 565,000  
 END OF HOLE 844.3  
 FINISH 5/12/96  
 LOGGED BY D.A.

DEPTH	DESCRIPTION	SAMPLE VOL	GOLD OZ/YD
0.00-1.52 (0-5)	GRAVEL-65% PEBBLES-20% COARSE SAND-15% FINE SAND	0.0144	0
1.52-3.05 (5-10)	GRAVEL-SAME	0.0173	0
3.05-4.57 (10-15)	GRAVELS-50% PEBBLES-30% COARSE SAND-20% FINE SAND	0.0115	0
4.57-6.10 (15-20)	GRAVELS-35% PEBBLES-40% COARSE SAND-25% FINE SAND-ABN COBBLES	0.0518	0
6.10-7.62 (20-25)	BOULDERS-65% COARSE SANDS	0.1265	{3X#1/2 {3 COLOR
7.62-9.14 (25-30)	BROWNISH SANDY GRAVEL	0.0259	{4X#1/2 {10 COLOR
9.14-10.67 (30-35)	BLUE CLAY-NO SAMPLE	-	-
10.67-12.19 (35-40)	BLUE CLAY-NO SAMPLE	-	-
12.19-13.72 (40-45)	BLUE CLAY-NO SAMPLE	-	-
13.72-15.24 (45-50)	BLUE CLAY-NO SAMPLE	-	-
15.24-16.76 (50-55)	BLUE CLAY-NO SAMPLE	-	-
16.76-18.28 (55-60)	BLUE CLAY-NO SAMPLE	-	-
18.28-19.81 (60-65)	BLUE CLAY-NO SAMPLE	-	-
19.81-21.34 (65-70)	SILTY SANDS-MINOR GRAVEL	0.0144	0
21.34-22.86 (70-75)	BOULDERS AND GRAVELS	0.0374	0
22.86-24.38 (75-80)	BOULDERS AND GRAVELS	0.2559	3 COLOR
24.38-24.69 (80-81)	BEDROCK @ 24.38M (80FT) BLACK SHEARED ARGILLITE ABN VFG PYRITE CUBES	0.0086	0
EOH24.69M(81FT)			

GALLERY RESOURCES LTD  
 NORTHING 5,875,020  
 COLLAR ELEVATION 912.6M  
 START 5/12/96  
 CONTRACTOR DATELINE

DRILL HOLE 9618  
 EASTING 565,602  
 END OF HOLE 845.5  
 FINISH 5/13/96  
 LOGGED BY D.A.

DEPTH	DESCRIPTION	SAMPLE VOL	GOLD OZ/YD
0.00-4.57 (0-15)	YELLOW SANDY SILT	0.0288	2 COLOR
4.57-6.10 (15-20)	YELLOW SILTY SAND + PEBBLES	0.0173	0
6.10-7.62 (20-25)	YELLOW SILTY TILL + 10% PEBBLES	0.0173	0
7.62-9.14 (25-30)	YELLOW TILL + 20% PEBBLES + SAND	0.0144	0
9.14-10.69 (30-35)	SILTY GRAVEL-50% PEBBLES	0.0077	0
10.69-19.81 (35-65)	YELLOW SANDY TILL-50% PEBBLES	0.0489	0
19.81-33.53 (65-110)	SILTY CLAY	0.0719	0
33.53-45.72 (110-150)	SILTY SANDS	0.1064	5 COLOR
45.72-51.82 (150-170)	SILTY SANDS	0.0201	0
51.82-59.44 (170-195)	GREY SILTY SANDS	0.0230	0
59.44-64.01 (195-210)	CLEAN DK GREY SANDY GRAVEL	0.0515	0
64.01-65.53 (210-215)	MED SAND	0.0230	0
65.53-67.06 (215-220)	GREY COARSE SAND + PEBBLES POSSIBLE BEDROCK @ 66.45M(218FT) ABN BLACK ARGILITE CHIPS (VERY SMALL ABN GRAPHITE)	0.0288	{2X#3 {2X#2 {8X#2/2 {6 COLORS

EOH 67.06M (220FT)

GALLERY RESOURCES LTD  
NORTHING 5,875,075  
COLLAR ELEVATION 899.8  
START 5/14/96  
CONTRACTOR DATELINE

DRILL HOLE 9619  
EASTING 565,538  
END OF HOLE 860.8  
FINISH 5/14/96  
LOGGED BY D.A.

DEPTH	DESCRIPTION	SAMPLE VOL	GOLD OZ/YD
0.00-1.52 (0-5)	YELLOW FINE SILTY SANDS 85% MUSCOVITE	0.0029	0
1.52-3.05 (5-10)	YELLOW FINE SILTY SANDS	0.0115	0
3.05-4.57 (10-15)	SANDY GRAVEL-25% PEBBLES	0.0058	0
4.57-7.62 (15-25)	SANDY GRAVEL	0.0086	0
7.62-12.19 (25-40)	YELLOW SILTY SANDS + CLAY BNDS	0.0288	0
12.19-13.72 (40-45)	BLUE CLAY-NO SAMPLE	-	-
13.72-19.81 (45-125)	SILTY SANDS + CLAY BNDS	0.060	0
19.81-39.01 (125-128)	BEDROCK-BLACK ARGILLITE NO PYRITE	0.0115	0

EOH 39.01M (128FT)

GALLERY RESOURCES LTD  
 NORTHING 5,875,028  
 COLLAR ELEVATION 918  
 START 5/14/96

DRILL HOLE 9620  
 EASTING 565,658  
 END OF HOLE 856.4  
 FINISH 5/15/96

CONTRACTOR DATELINE  
 DEPTH DESCRIPTION

LOGGED BY D.A.  
 SAMPLE GOLD  
 VOL OZ/YD

DEPTH	DESCRIPTION	SAMPLE VOL	GOLD OZ/YD
0.00-1.52 (0-5)	GREY BROWN GRAVEL-60% PEBBLES	0.0115	0
1.52-3.05 (5-10)	GREY BROWN GRAVEL	0.0144	2 COLOR
3.05-4.57 (10-15)	GREY BROWN GRAVEL-INCREASED PEBBLES	0.0144	3 COLOR
4.57-6.10 (15-20)	GREY GRAVEL	0.0316	0
6.10-7.62 (20-25)	GREY GRAVEL-60% PEBBLES	0.0489	0
7.62-9.14 (25-30)	GREY BROWN SANDY GRAVEL	0.0144	1X#1
9.14-10.67 (30-35)	GREY BROWN SANDY GRAVEL	0.0101	3 COLOR
10.67-12.19 (35-40)	GREY BROWN GRAVEL-40% PEBBLES	0.0216	1 COLOR
12.19-13.72 (40-45)	GREY BROWN GRAVEL-40% PEBBLES	0.0316	1 COLOR
13.72-15.24 (45-50)	GREY BROWN GRAVEL-40% PEBBLES	0.0316	2 COLOR
15.24-16.76 (50-55)	GRAVEL-ABN COBBLES-75% ANG FRAGMENTS	0.0403	3 COLOR
16.76-18.28 (55-60)	GRAVEL-ABN COBBLES-80% ANG FRAGMENTS AT 56 FINE SAND	0.0748	{2X#1 {18 COLOR
18.28-36.58 (60-120)	YELLOW SILTY SAND-TR CLAY	0.1150	2 COLOR
36.58-54.86 (120-180)	COARSE BLACK SAND-NO SAMPLE	0.0058	-
54.86-56.39 (180-185)	DK GREY-BLACK PEBBLEY SAND	0.0115	2 COLOR
56.39-57.91 (185-190)	DK BROWN-BLACK PEBBLEY SAND	0.0201	0
57.91-59.44 (190-195)	VERY BROKEN BLACK SHALE	0.0288	{1X#2 {2X#1
59.44-60.96 (195-200)	SOLID BEDROCK @ 60.35M (198FT)	0.0173	{1 COLOR
60.96-61.57 (200-202)	BEDROCK-BK ARGILLITE ABN VFG PYRITE CUBES, TR GRAPHITE	0.0029}	0
		EOH 61.57M (202FT)	