

**ASSESSMENT REPORT**

**on the**

**SOUP PROPERTY**

**Soup #1 - Soup 19, Soup Fr, Soup 11 Fr**

**KLIYUL CREEK AREA**

**OMINECA MINING DIVISION**

**for**

**VITAL PACIFIC RESOURCES LTD. and**

**ATHLONE RESOURCES LTD.**

**by**

**DISCOVERY CONSULTANTS**

**BOX 933**

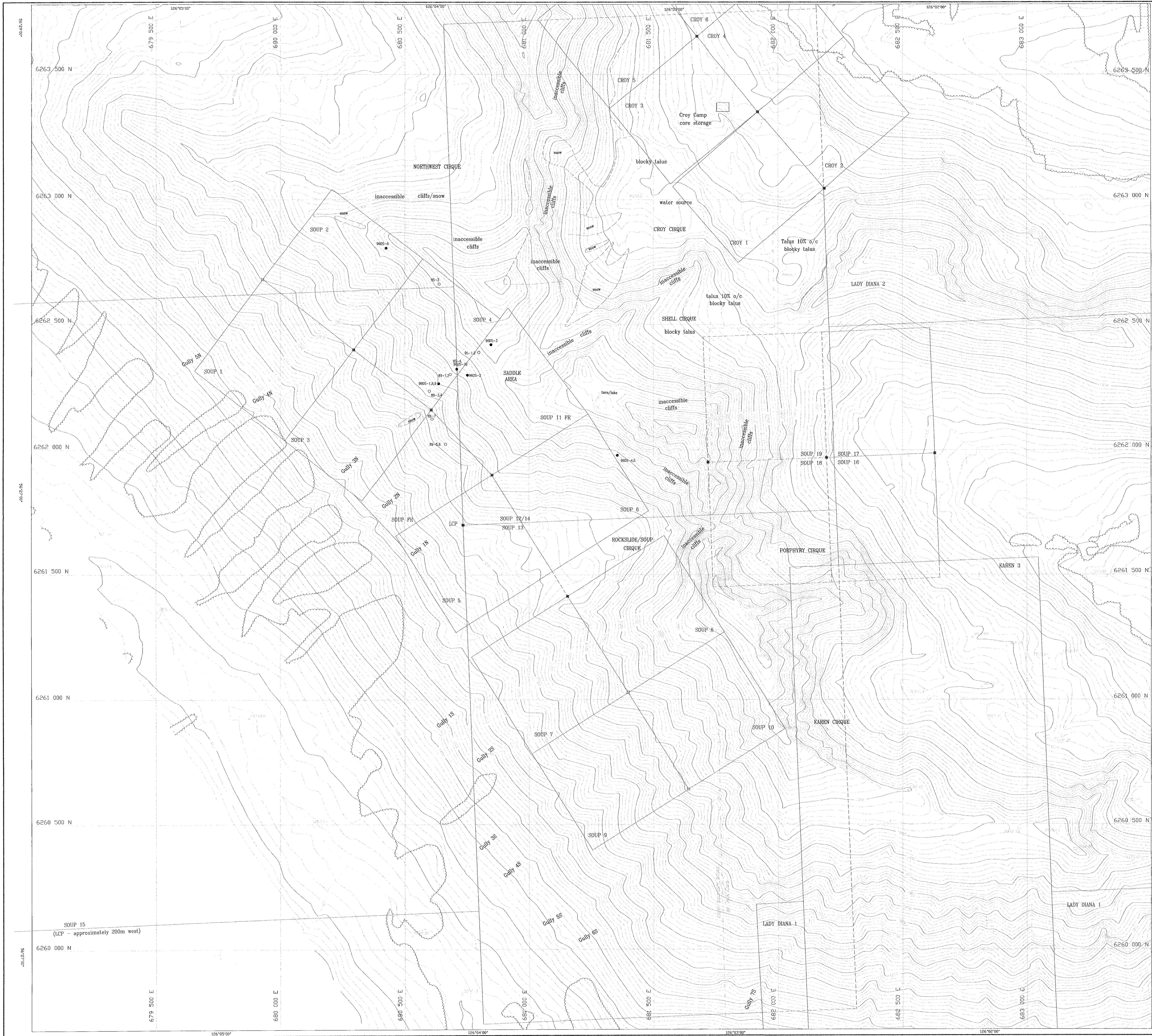
**VERNON, BC V1T 6M8**

NTS: 94D/08E  
Latitude: 56°04'W  
Longitude: 126°04'W  
Owner: Vital Pacific Resources Ltd.  
Operator: Vital Pacific Resources Ltd.  
Author: Jane M. Howe, P. Geo  
Date: 22 November, 1996

Volume 2 of 2

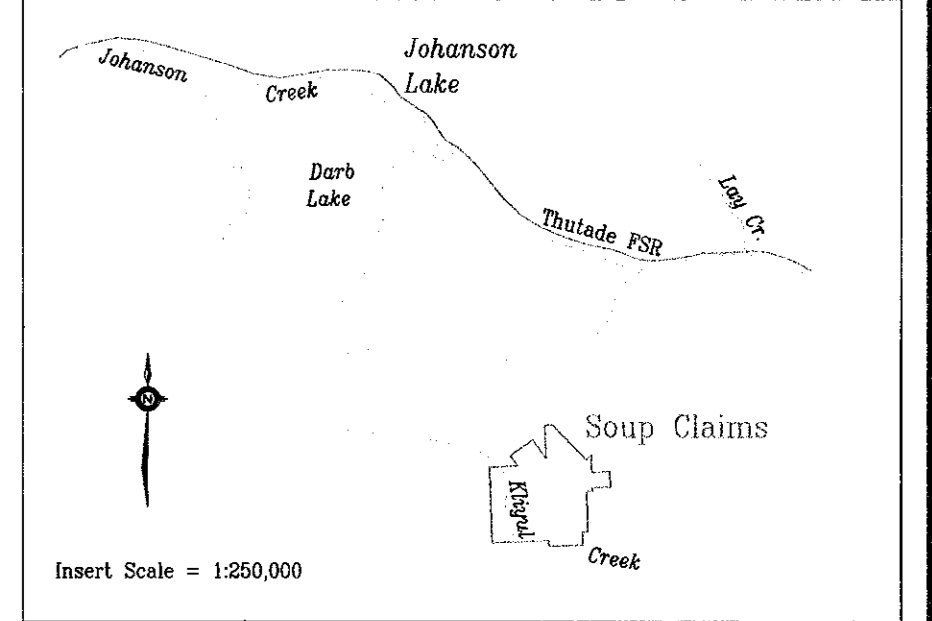
24661  
PART 2 OF 2

**DISCOVERY**



**LEGEND**

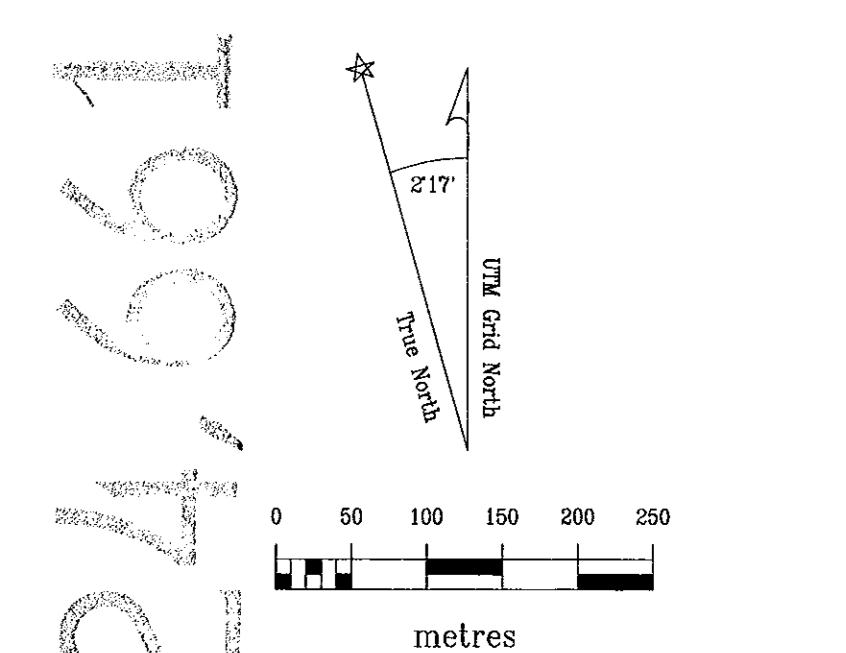
- 965-3 1996 DDH program
- 89-12 Historical DDH programs
- Snow/talus/inaccessible boundaries
- Tree/scrub-brush boundary
- Claim post - located in field



DATE:	REVISION BY:	DATE:	REVISION BY:
Nov 12/96	rk	update to layout	
Nov 20/96	rk	rock out	
Nov 22/96	RM	geology	

Path: \S2\52.dwg

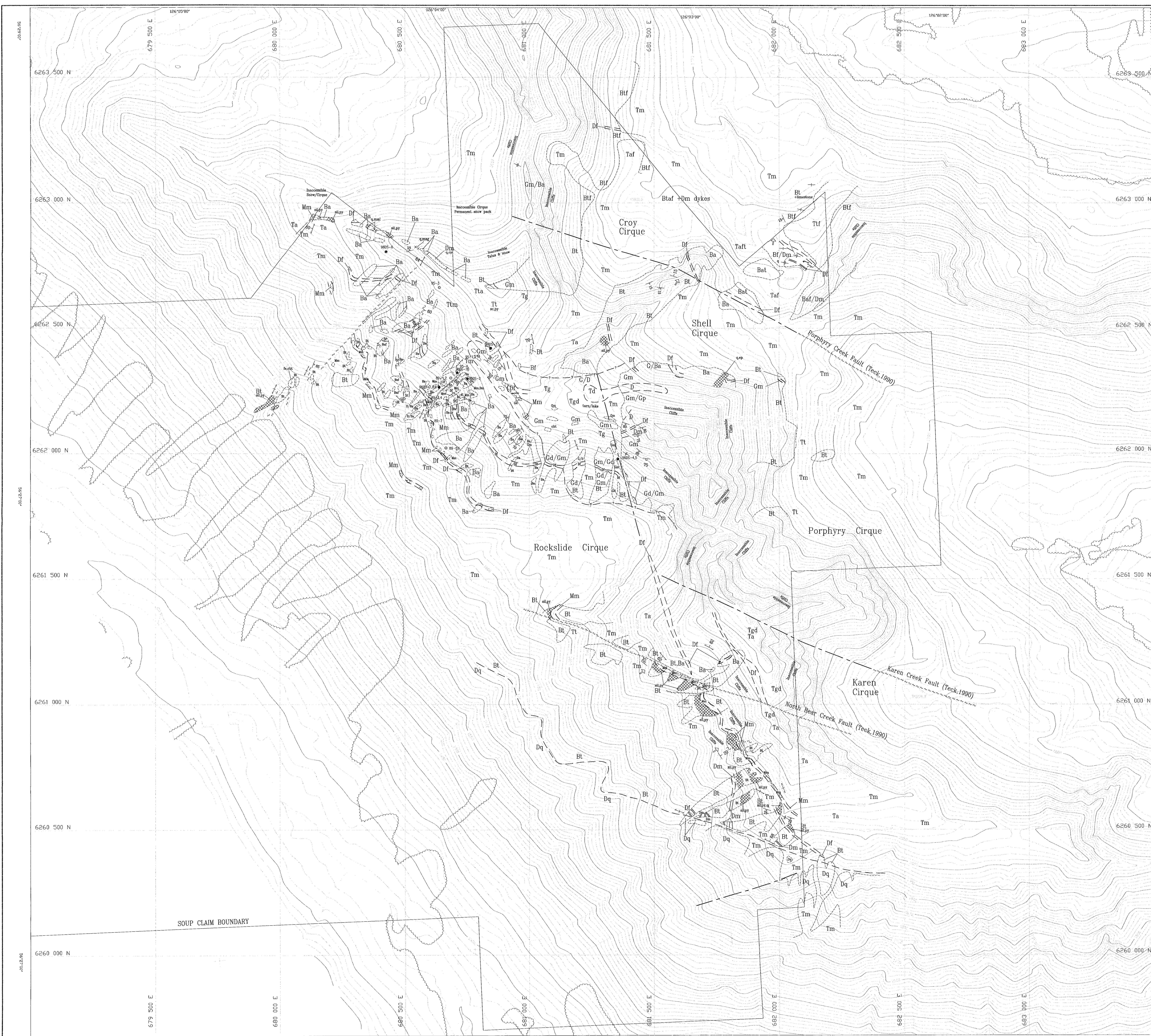
GEOLOGICAL SURVEY BRANCH  
ASSESSMENT REPORT



**DISCOVERY** Consultants  
VITAL PACIFIC RESOURCES LTD.

**SOUP PROPERTY  
1996 EXPLORATION PROGRAM  
BASE MAP**

Location:	Kiyul Cr.	Mining Jurisdiction:	Omineca
Datum:	NAD83	Map Ref:	0940/08E
Project:	572	Date:	Nov. 25/96
		Drawn By:	rdk
		Figure:	Map 1



**LEGEND**

- 9025-3 1996 DDH program
- 89-12 Historical DDH programs
- Tree/scrub-brush boundary
- Topographic contour interval 10m

**GEOLOGY**

- INTRUSIVE ROCKS** (no age relationship implied)
- Gm Gabbro: coarse-grained, hornblende-rich gabbroic textured unit, typically equigranular, moderately magnetic
  - Gd Gabbro to Diorite: medium to coarse-grained, plagioclase and hornblende rich unit, weak to moderately magnetic
  - Gp Gabbro to Pyroxenite: medium to coarse-grained hornblende and pyroxene-rich unit, locally with layered textures, strongly magnetic
  - Dm Diorite/Microdiorite/Mafic dyke: narrow, fine-grained dykes which may or may not contain felds and elongated hornblende phenocrysts or rarely quartz phenocrysts. Typically moderately to strongly magnetic
  - Df Diorite: narrow dykes with medium to coarse-grained euhedral feldspar phenocrysts
  - Dq Diorite: quartz and plagioclase-rich, coarse-grained Kiyul Creek Pluton

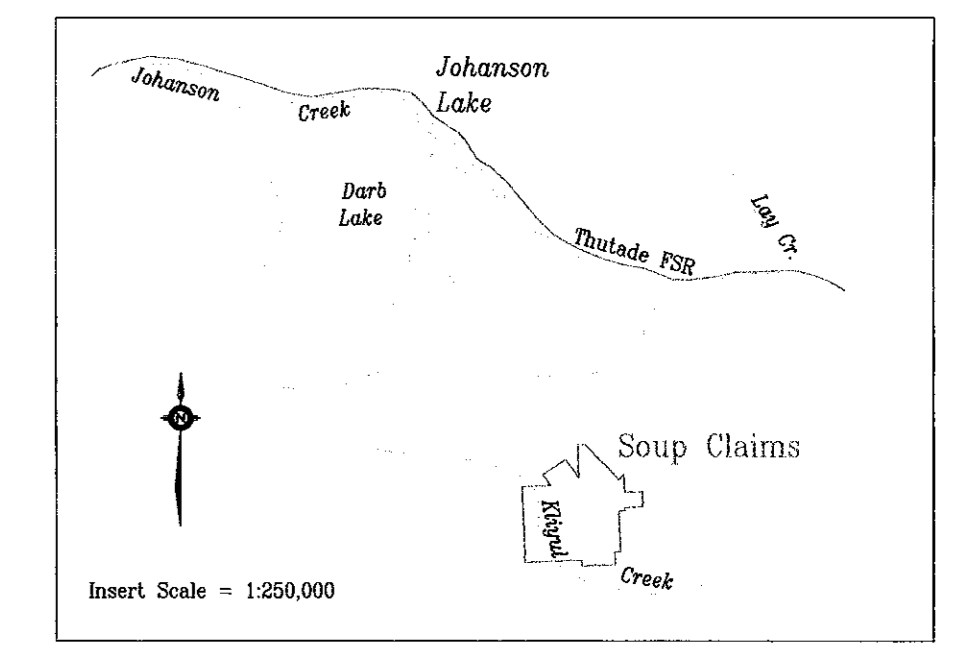
**TALKIA VOLCANICS**

- Bt Basalt: fine to coarse-grained plagioclase, ± hornblende tuffs; crystal tuffs; ash tuffs; interbedded tuffs
- Bf Basalt: lapilli tuffs, tuff breccias and agglomerates
- Ba Basalt: augite porphyritic flow (?)
- Mm Massive Magnetite: frequently includes intense iron carbonate, quartz and chlorite alteration

**TALUS**

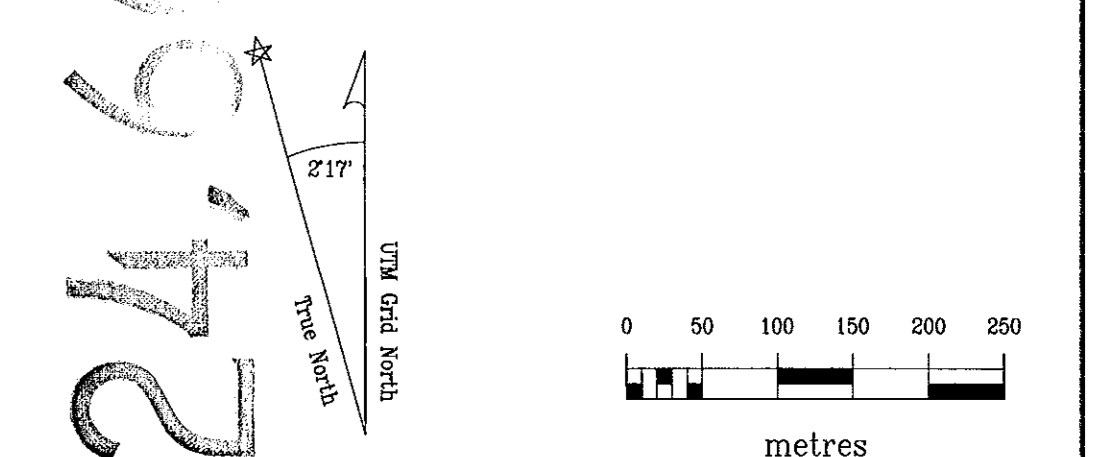
- Tm Mixed rock type talus
- Tgd Primarily gabbro to diorite talus
- Ta Primarily basaltic augite porphyritic talus
- Tt Primarily basaltic fine to coarse-grained tuffaceous talus
- Tf Primarily basaltic lapilli tuff to agglomerate talus

- ↖ Bedding (top unknown), strike and dip
- ↗ Bedding younging direction
- ↖ Quartz vein, strike and dip
- ↗ Polished, strike and dip
- ↖ Outcrop
- ↗ Geological contact, known, unknown
- Fault (discernable movement)
- Lineament
- ↖ Shear, strike and dip
- al = albification
- gr = granite
- q = quartz
- ep = epidote alteration
- mag = magnetite
- msl = malachite
- areas of alteration



REVISION DATE	REVISION BY	REVISION
Nov. 12/96	rk	update to layout
Nov. 20/96	rs	rock data
Nov. 22/96	SM	geology

GEOLOGICAL SURVEY BRANCH ASSESSMENT REPORT



**DISCOVERY** Consultants

VITAL PACIFIC RESOURCES LTD.

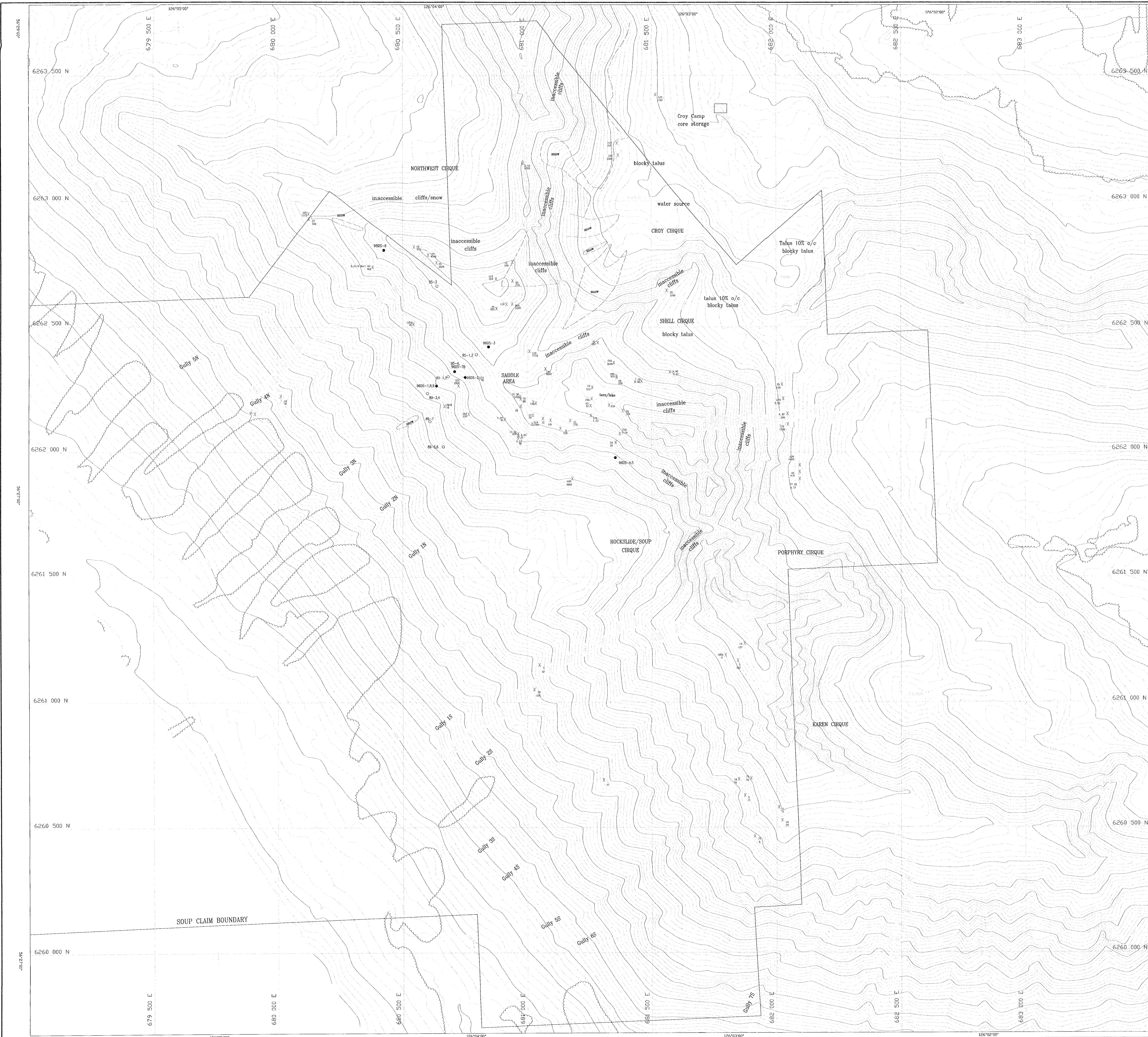
**SOUP PROPERTY**  
1996 GEOLOGICAL SURVEY  
GEOLOGY MAP

Location:	Kiyul Ck.	Mining Jurisdiction:	Ontario
Datum:	NAD83	Map Ref.:	094D/08E
Project:	S72	Date:	Nov. 25/96
		Drawn By:	rk, RM
		Figure:	Map 2



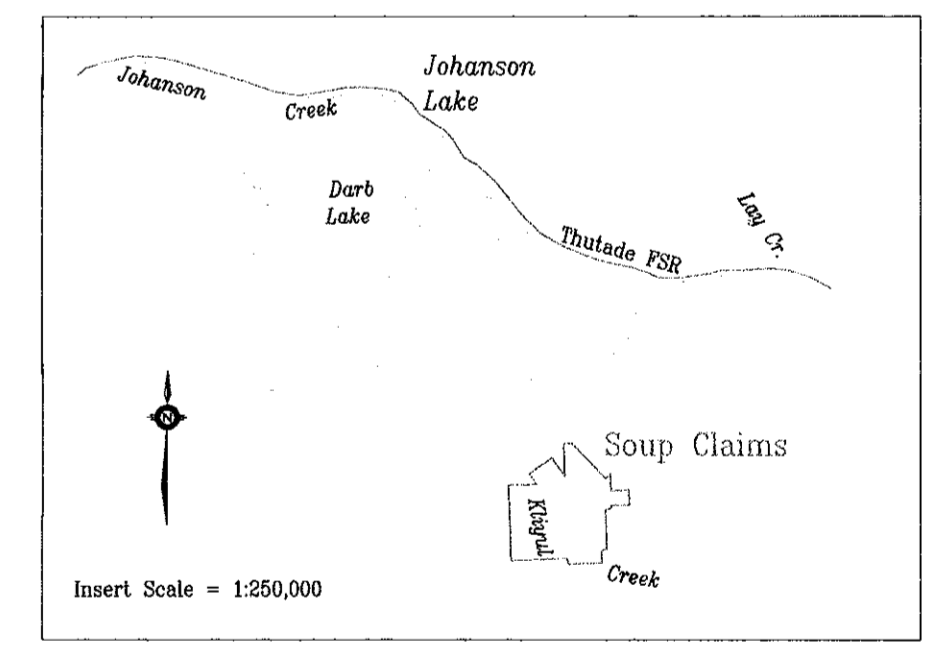




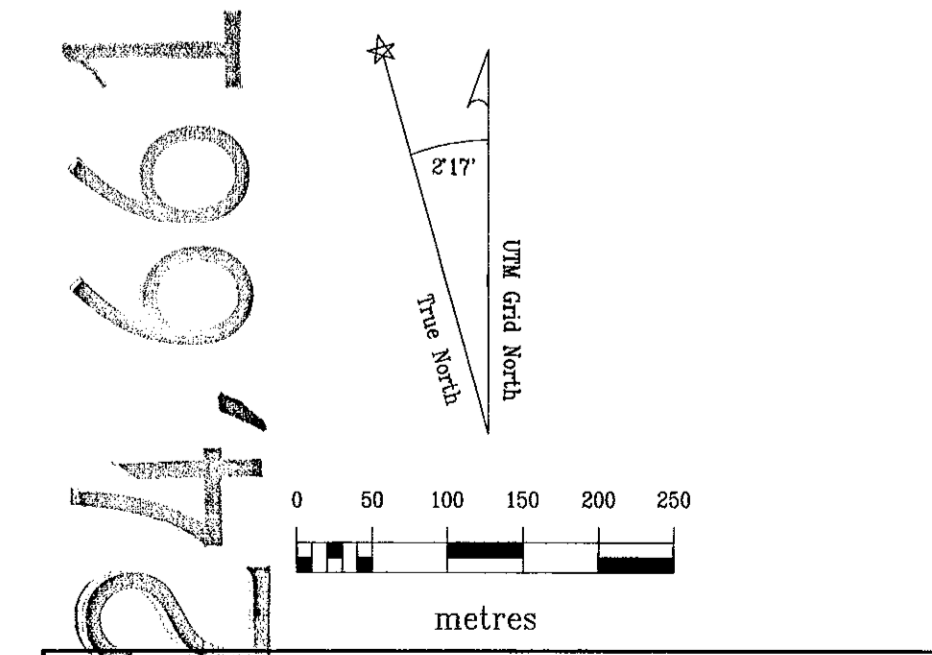


**LEGEND**

- 75 - Au g/g
  - X 500 - Au g/t
  - 337 - Cu g/t
  - 6.21/0.86/1.00 - Au g/t
  - 9605-3
  - 89-1.2
  -
- Rock sample location
  - Vital Pacific program 1996
  - Variable rock analysis
  - 1996 DDH program
  - Historical DDH programs
- Snow/talus/inaccessible boundaries
  - - - Tree/scrub-brush boundary



DRAWN		Sept 25/96	
REVISION	BY	REVISION	BY
Nov 22/96	rs	update to layout	
Nov 20/96	rs	rock dot	
Nov 22/96	RM	genkey	
Path:		572,572.4m	



**DISCOVERY** Consultants

**VITAL PACIFIC RESOURCES LTD.**

**SOUP PROPERTY**  
1996 ROCK SAMPLE SURVEY  
**ROCK RESULTS - Au, Cu**

Location:	Kiyul Ck.	Mining Jurisdiction:	Ontario
Datum:	NAD83	Map Ref.:	094D/08E
Scale:	1:5,000	U.N.E.	09
Project:	572	Date:	Nov. 25/96
Drawn By:	rk, RM	Figure:	Map 4B

GEOLOGICAL SURVEY BRANCH  
ASSESSMENT REPORT

24661











































