



TITLE OF REPORT [type of survey(s)] <u>GEOPHYSICAL (AIRBORNE)</u>	TOTAL COST <u>11,100</u>
----------------------------------------------------------------------	-----------------------------

AUTHOR(S) E. R. KRUCHKOWSKI SIGNATURE(S)

NOTICE OF WORK PERMIT NUMBER(S)/DATE(S) SMI-96-010 1866-117 YEAR OF WORK 1996

STATEMENT OF WORK - CASH PAYMENT EVENT NUMBER(S)/DATE(S)

3095781 Oct. 10 / 1996

PROPERTY NAME CLONE WEST

CLAIM NAME(S) (on which work was done) DEE #1, #2 ; PORT 12, 23, 24, 24A G

COMMODITIES SOUGHT Ag, Au, Cu, Co

MINERAL INVENTORY MINFILE NUMBER(S), IF KNOWN

MINING DIVISION SREZNA NTS

LATITUDE 55° 48' LONGITUDE 129° 47' * (at centre of work)

OWNER(S)
1) TEUTON RESOURCES CORP. 2)

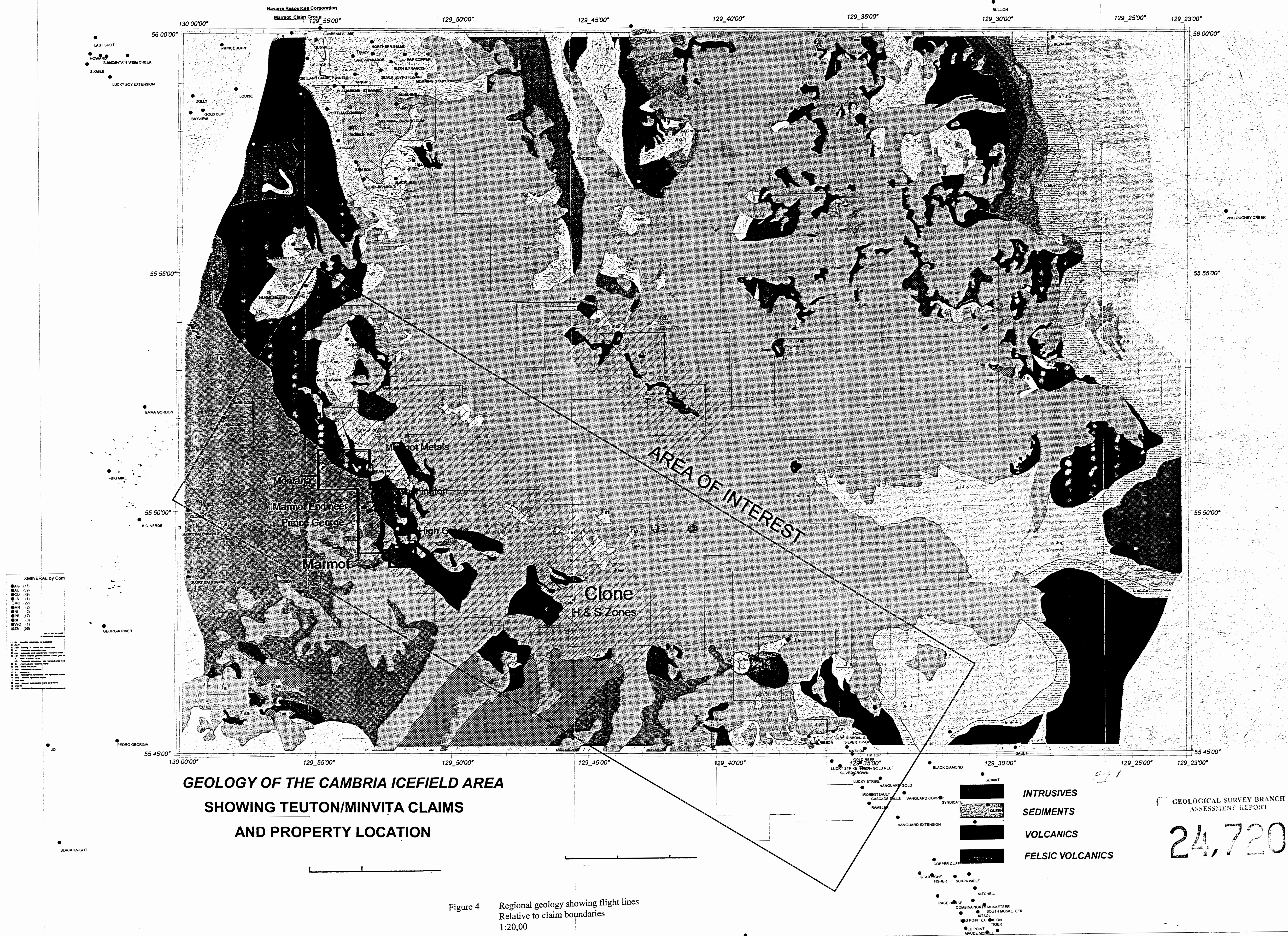
MAILING ADDRESS
509-675 W. HASTINGS ST.
VANCOUVER BC
V6S 1E2

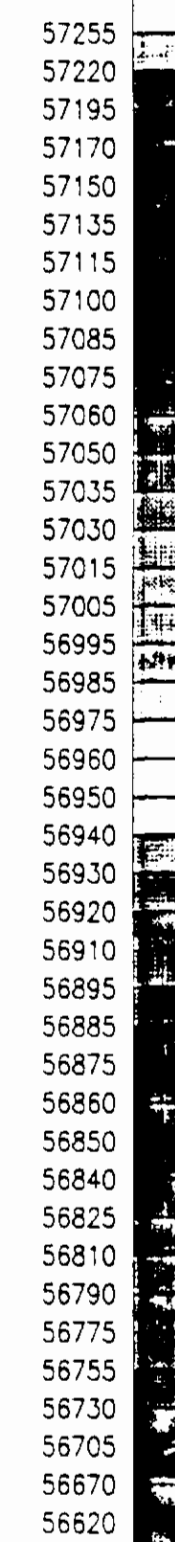
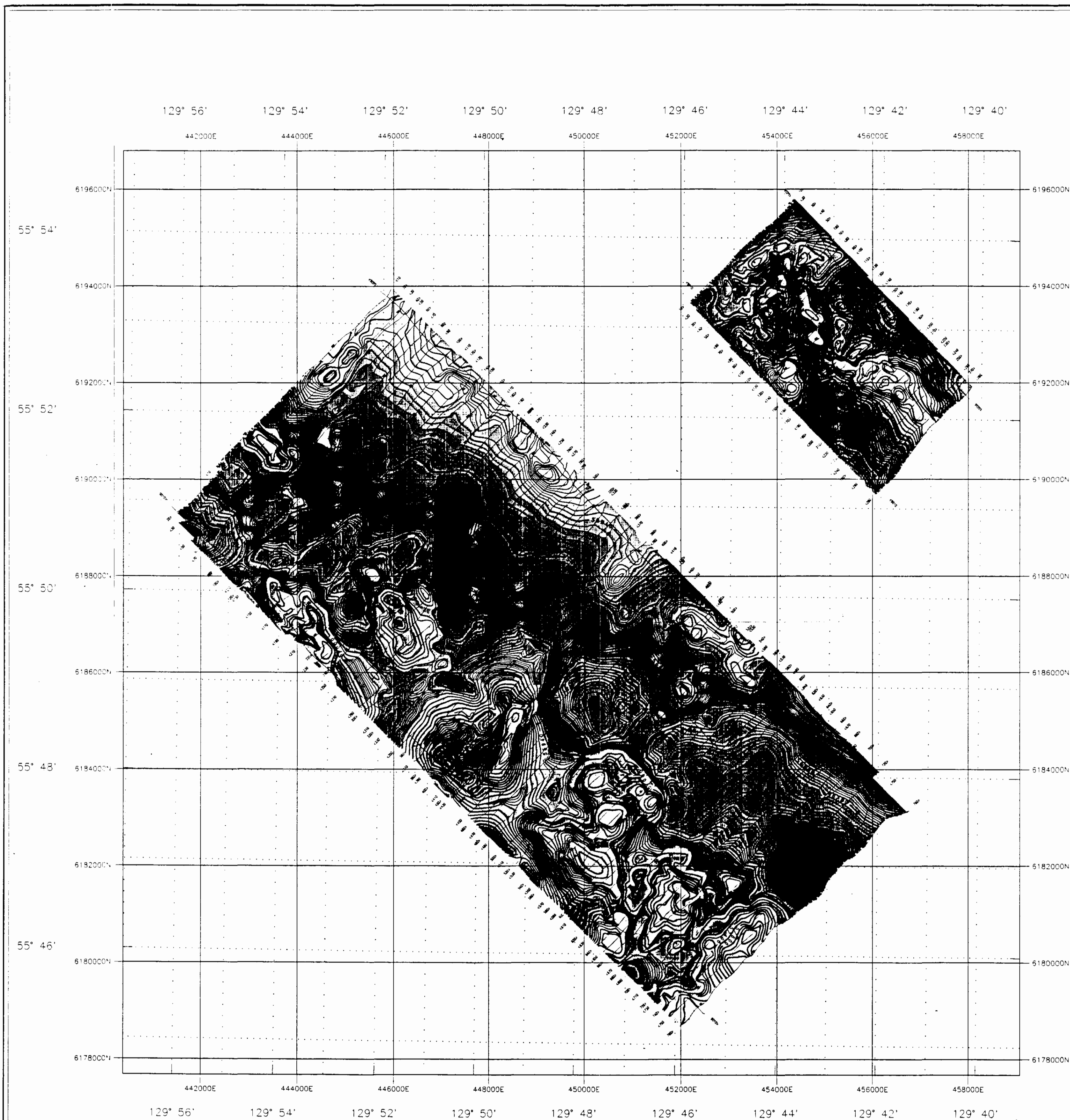
OPERATOR(S) [who paid for the work]
1) TEUTON RESOURCES CORP. 2)

MAILING ADDRESS

PROPERTY GEOLOGY KEYWORDS (lithology, age, stratigraphy, structure, alteration, mineralization, size and attitude):
RE: MAIN CLAIM PROPERTY: NORTHWESTELY TENDING, EN ECHOLON, SILICA-CONTROLLED
VEINS & STOCKWORKS HOST Au-HEMATITE AND Au-Co-As SULFIDE
MINERALIZATION. HOST ROCK IS JURASSIC AGE PYROCLASTIC VOLCANICS IN
CONTACT WITH A VARIETY OF MUTTONS ASSOCIATED WITH THE MAIN
CORST RANGE DATHELITH.

REFERENCES TO PREVIOUS ASSESSMENT WORK AND ASSESSMENT REPORT NUMBERS 1996 ASS'T REP'T RS
E. R. KRUCHKOWSKI & 1995 ASS'T REP'T, D. CREMONESE RE CLONE
PROPERTY; IN FILE WITH BC DEMP.





Total Field (nT)

LEGEND:

HELICOPTER:
 TYPE: ASTAR 350 B1
 REGISTRATION: CF - EHS

SURVEY PARAMETERS:
 DATES FLOWN: May 17 to 19, 1998
 MEAN TERRAIN CLEARANCE: 60 metres
 TRAVERSE LINE SPACING: 200 metres
 CONTROL LINE SPACING: 8200 and 2800 metres

MAGNETOMETER:
 TYPE: SCINTREX MAC-3 CESIUM MAGNETOMETER
 SENSITIVITY: 0.001 nT
 SENSOR HEIGHT: 44 metres ogl
 SAMPLE INTERVAL: 10 readings/second

VLF:
 TYPE: TOTEM 2A AIRBORNE VLF SYSTEM
 VLF LINE STATION: SEATTLE (NLK)
 VLF ORTHO STATION: MAINE (NAA)
 RECEIVER HEIGHT: 44 metres ogl
 SAMPLE INTERVAL: 10 readings/second

EM SYSTEM:
 TYPE: SCINTREX HEM - 5 FREQUENCY EM SYSTEM
 VERTICAL COAXIAL COIL: 875, 4800 Hz
 HORIZONTAL COPLANAR COIL: 930, 4170, 35000 Hz
 EM BRD HEIGHT: 30 metres ogl
 SAMPLE INTERVAL: 10 readings/second

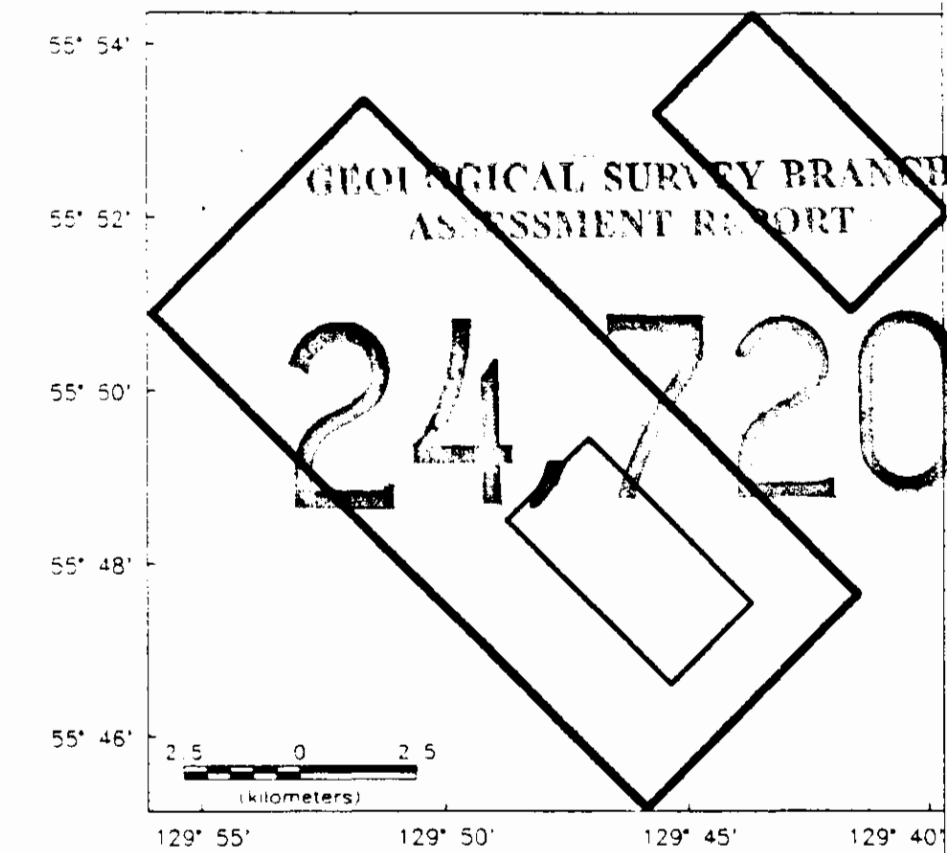
NAVIGATION SYSTEM:
 TYPE: RNAV-488 (PICODAS)
 RADAR ALTIMETER: BENDIX-KING KRA-10A
 GPS SAMPLE INTERVAL: 1 reading/second

CONTOUR INTERVALS:

5 nT
 20 nT
 100 nT

ANGLE OF TRAVERSE LINE WITH RESPECT TO NORTH: 45 degrees
 DATUM: NAD-27
 UTM ZONE: 8

INDEX MAP:



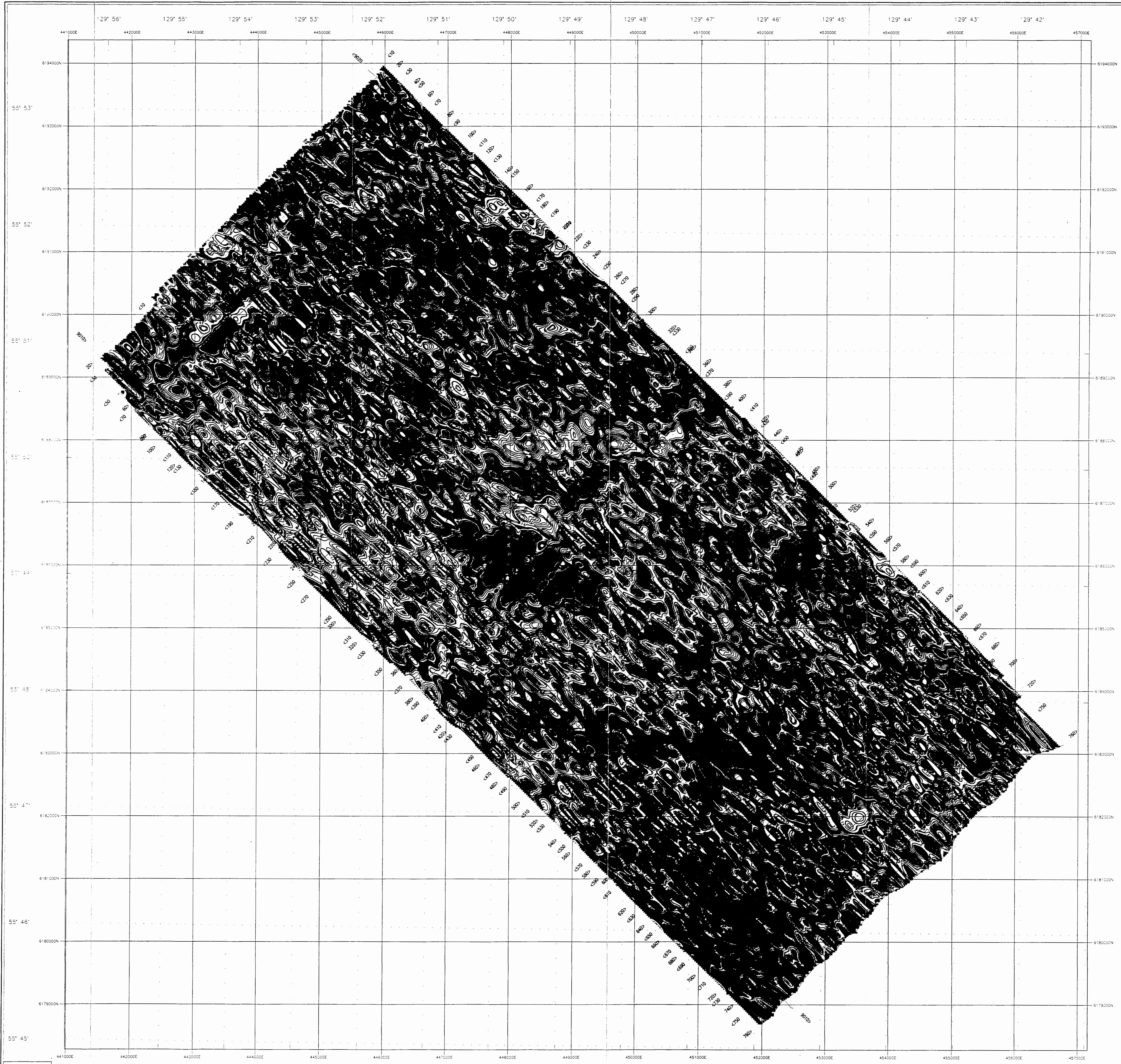
Scale 1:50000
 (meters)

TEUTON RESOURCES CORP.
 HEM - MAG - VLF SURVEY
 STEWART PROPERTIES
 SE OF STEWART, BRITISH COLUMBIA
 ZONE 2 AND 3
TOTAL MAGNETIC FIELD MAP

DATA ACQUIRED, COMPILED, AND PLOTTED BY
 SCINTREX LIMITED
 Oshawa, Ontario, Canada

Inspected by:

Figure 5



LEGEND:

HELICOPTER:
TYPE: ACTAR 200 BT
ACQUISITION: CP - ONE

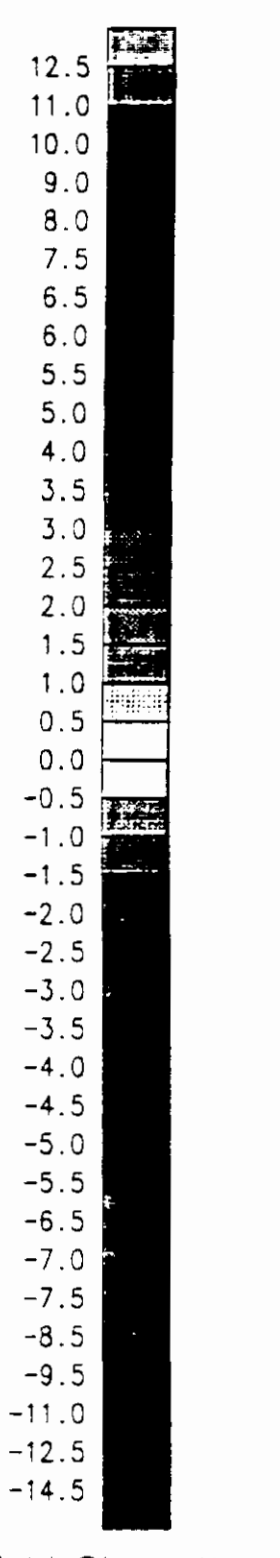
SURVEY PARAMETERS:
DATES FLOWN: May 17 and 18, 1998
MEAN TERRAIN ELEVATION: 80 meters
TRANSVERSE LINE SPACING: 200 meters
CONTROL LINE SPACING: 800 meters

MAGNETOMETER:
TYPE: SCOUTER AND-3 CESSNA MAGNETOMETER
SENSITIVITY: 0.001 nT
SENSOR HEIGHT: 44 meters up
SAMPLE INTERVAL: 10 readings/second

MAP:
TYPE: TETON DA AIRBORNE VLF SYSTEM
VLF LINE STATION: SEATTLE (NAA)
VLF ORTHO STATION: HANDE (NAA)
RECEIVER HEIGHT: 44 meters up
SAMPLE INTERVAL: 10 readings/second

DM SYSTEM:
TYPE: SCOUTER AND-3 FREQUENCY DM SYSTEM
VERTICAL CHANNEL CODE: 4000 Hz
HORIZONTAL CHANNEL CODE: 330, 4170, 28000 Hz
DM BAND HEIGHT: 30 meters up
SAMPLE INTERVAL: 10 readings/second

NAVIGATION SYSTEM:
TYPE: PNAV-08 (PICOBAK)
INSAR ALTIMETER: BENDIX-KING CDB-104
GPS SAMPLE INTERVAL: 1 reading/second

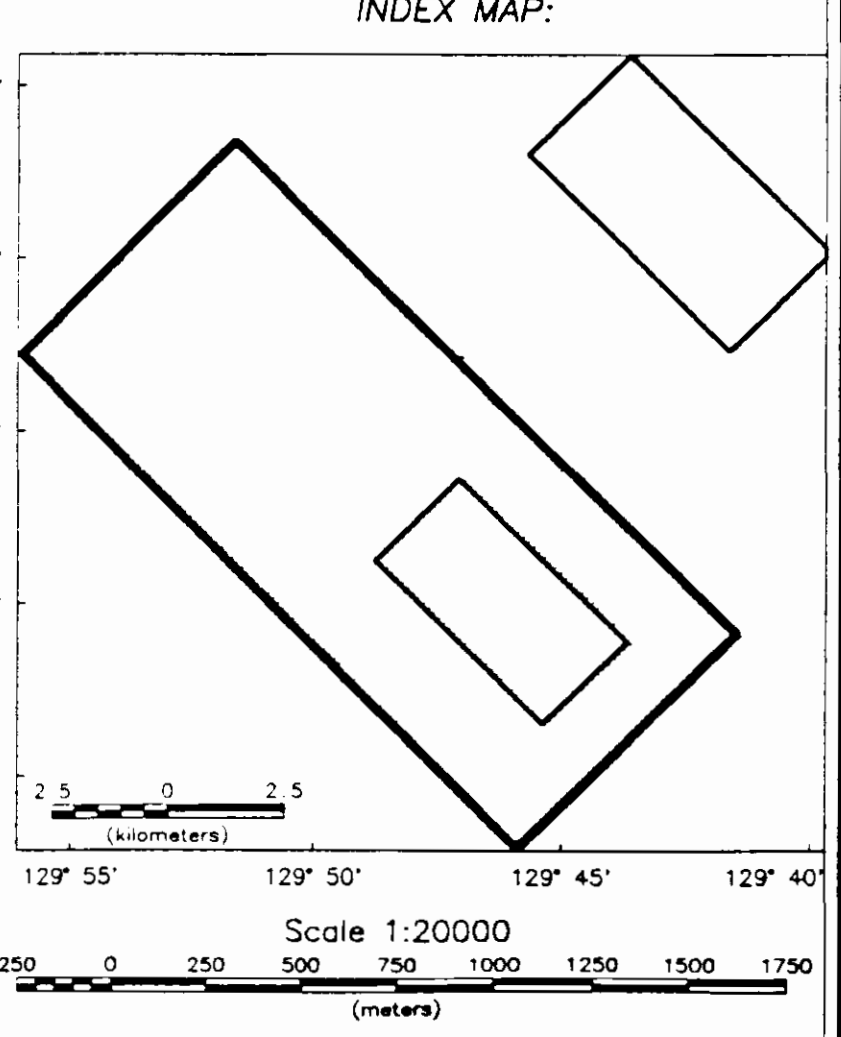


Field Strength (percent)

CONTOUR INTERVALS:

0.5 %
2.0 %
10.0 %

ANGLE OF TRANSVERSE LINE WITH RESPECT TO NORTH: 45 degrees
ORIGIN: NAD-27
UTM ZONE: 8



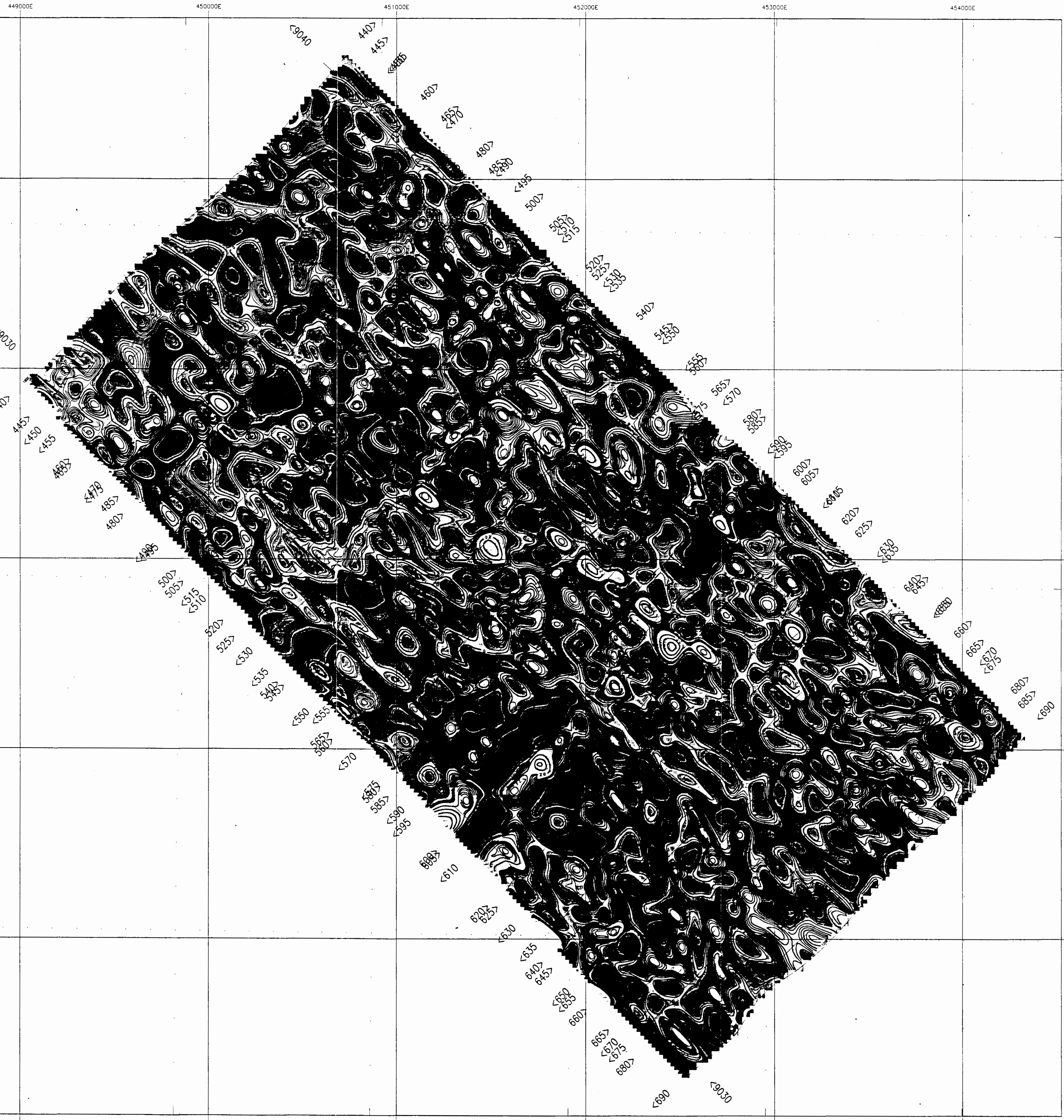
TETON RESOURCES CORP.
AEM - MAG - VLF SURVEY
STEWART PROPERTIES
SE OF STEWART, BRITISH COLUMBIA
ZONE 2
SUMMED VLF FIELD STRENGTH MAP
LINE - NLK + ORTHO - NAA

INSPECTED BY: [Signature]

GEOLOGICAL SURVEY BRANCH
ASSESSMENT REPORT
24,720

Figure 6

129° 49' 129° 48' 129° 47' 129° 46' 129° 45' 129° 44'



LEGEND:

HELICOPTER:
 TYPE: ASTAR 330 BT
 REGISTRATION: CF - 145

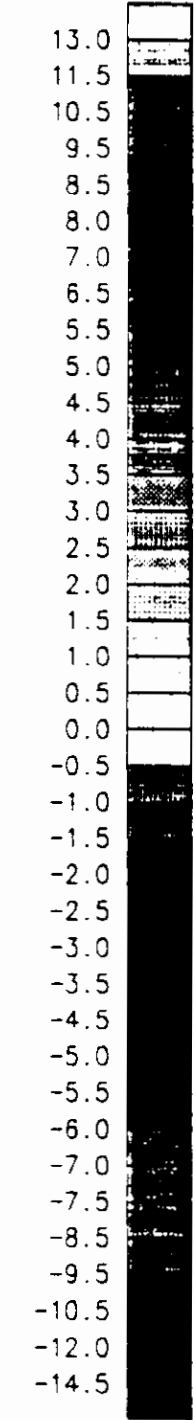
SURVEY PARAMETERS:
 DATES FLOWN: May 17 and 18, 1998
 MEAN TERRAIN CLEARANCE: 80 metres
 TRAVERSE LINE SPACING: 100 metres
 CONTROL LINE SPACING: 2300 metres

MAGNETOMETER:
 TYPE: SCINTREX MAC-3 CESIUM MAGNETOMETER
 SENSITIVITY: 0.001 nT
 SENSOR HEIGHT: 44 metres dgf
 SAMPLE INTERVAL: 10 readings/second

VLF:
 TYPE: TOTEM 2A AIRBORNE VLF SYSTEM
 VLF LINE STATION: SEATTLE (NLK)
 VLF ORTHO STATION: MANNE (NAA)
 RECEIVER HEIGHT: 44 metres dgf
 SAMPLE INTERVAL: 10 readings/second

EM SYSTEM:
 TYPE: SCINTREX HEM - 5 FREQUENCY EM SYSTEM
 VERTICAL COAXIAL COIL: 875, 4800 Hz
 HORIZONTAL COPLANAR COIL: 930, 4170, 35000 Hz
 EM BRD HEIGHT: 30 metres dgf
 SAMPLE INTERVAL: 10 readings/second

NAVIGATION SYSTEM:
 TYPE: PHAV-458 (PROLOGS)
 RADAR ALTIMETER: BENDIX-KING KRA-10A
 GPS SAMPLE INTERVAL: 1 reading/second



Field Strength (percent)

CONTOUR INTERVALS:

=====	0.5 %
=====	2.0 %
=====	10.0 %

ANGLE OF TRAVERSE LINE WITH RESPECT TO NORTH : 45 degrees
 DATUM : NAD-27
 UTM ZONE : 9

INDEX MAP:

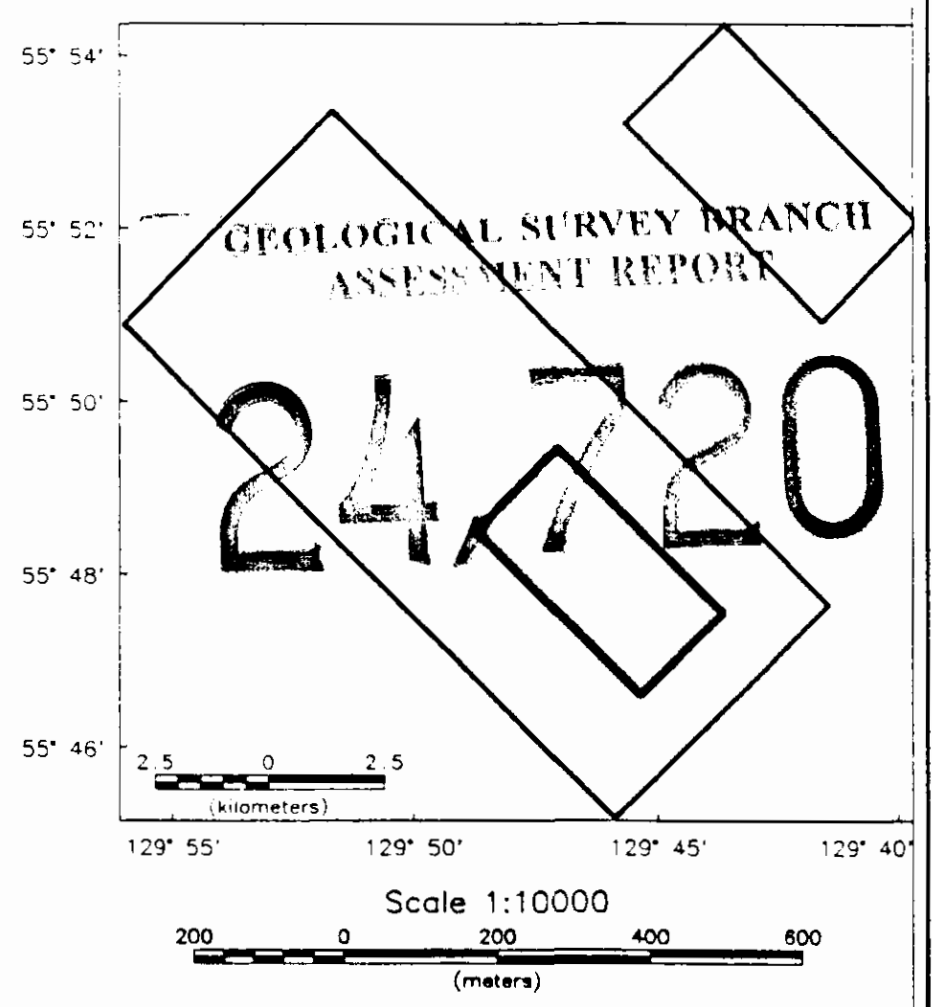


Figure 7

TEUTON RESOURCES CORP.
 HEM - MAG - VLF SURVEY
 STEWART PROPERTIES
 SE OF STEWART, BRITISH COLUMBIA
 ZONE 1

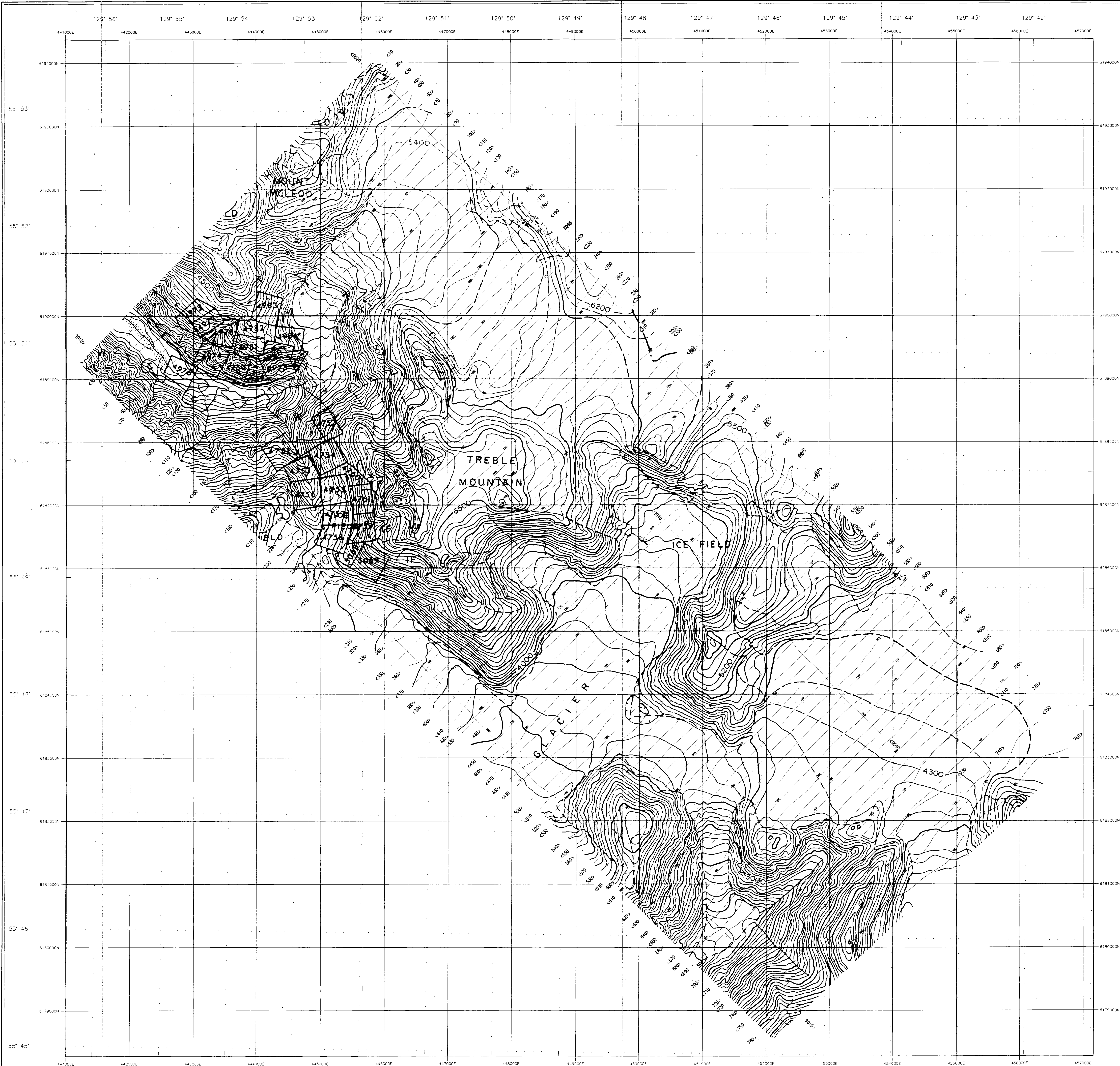
SUMMED VLF FIELD STRENGTH MAP
 LINE - NLK + ORTHO - NAA

HEM, MAG, VLF, AND PLOTTER BY
 SCINTREX LIMITED
 Denver, Idaho, Canada

Inspected by:

449000E 450000E 451000E 452000E 453000E 454000E

129° 48' 129° 47' 129° 46' 129° 45' 129° 44'



LEGEND:

HELICOPTER
 TYPE: ASAR 300 BT
 REGISTRATION: CF - D08

SURVEY PARAMETERS:
 DATE: FLYING May 17 and 18, 1998
 MEAN TERRAIN CLEARANCE: 40 metres
 TRANSMITTE LINE SPACING: 200 metres
 CONTROL LINE SPACING: 4000 metres

MAGNETOMETER
 TYPE: SCANTREX MAG-2 CESAR MAGNETOMETER
 SENSITIVITY: 0.201 nT
 SENSOR HEIGHT: 44 metres w/ft
 SAMPLE INTERVAL: 10 readings/second

GPS
 TYPE: TRIMBLE 2400 WIRELESS GPS SYSTEM
 W/FT LINE STATION: SEATTLE (ONLY)
 W/FT GRID STATION: WAUSA (ONLY)
 RECEIVER HEIGHT: 44 metres w/ft
 SAMPLE INTERVAL: 10 readings/second

EM SYSTEM
 TYPE: SCANTREX HEM - 5 FREQUENCY EM SYSTEM
 VERTICAL COIL: 875, 4800 Hz
 HORIZONTAL COILS: 300, 4170, 5000 Hz
 EM SWEEP HEIGHT: 30 metres w/ft
 SAMPLE INTERVAL: 10 readings/second

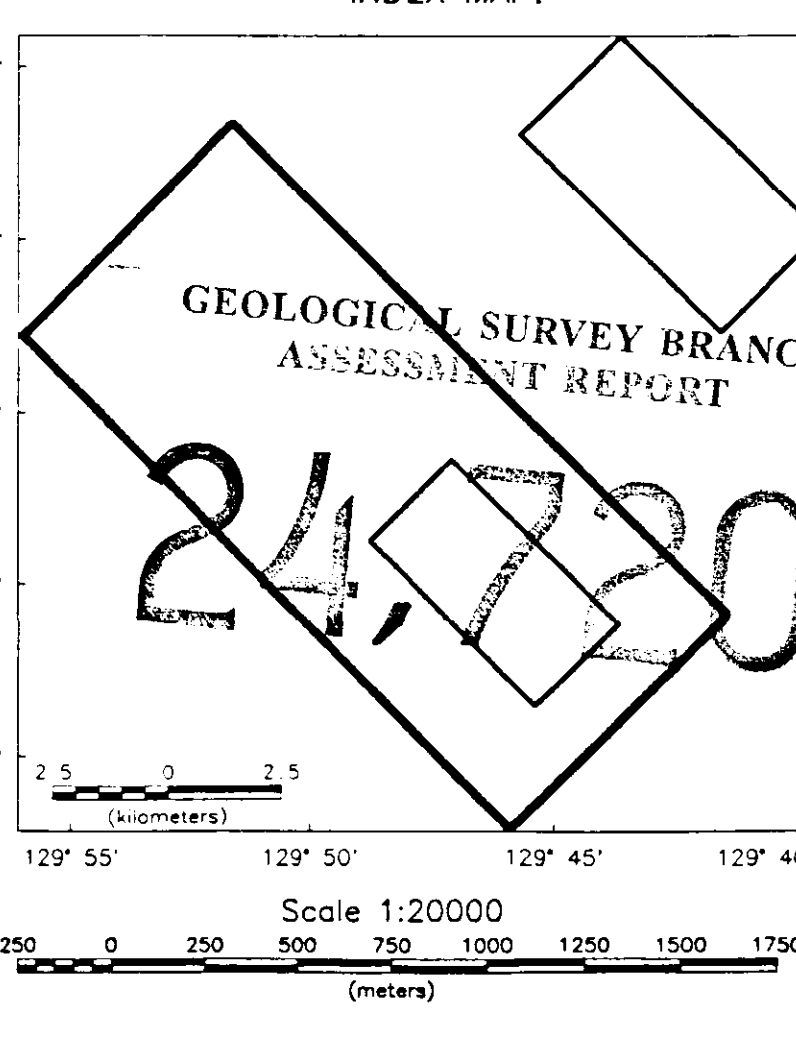
MAPPROJECTION SYSTEM
 TYPE: PHOTONAV (PROCESSED)
 POINT ALGORITHM: GEODESIC (NAD 83)
 GPS SAMPLE INTERVAL: 1 reading/second

SYMBOL LEGEND

1.	gt > 10	●
2.	5 < gt ≤ 10	○
3.	1 < gt ≤ 5	○
4.	gt ≤ 1	○

ANOMALY LETTER CONDUCTANCE (μS/metre)
 FREQUENCY (Hz)

ANGLE OF TRANSVERSE LINE WITH RESPECT TO NORTH = 40 degrees
 DATUM: NAD-83
 UTM ZONE: 18



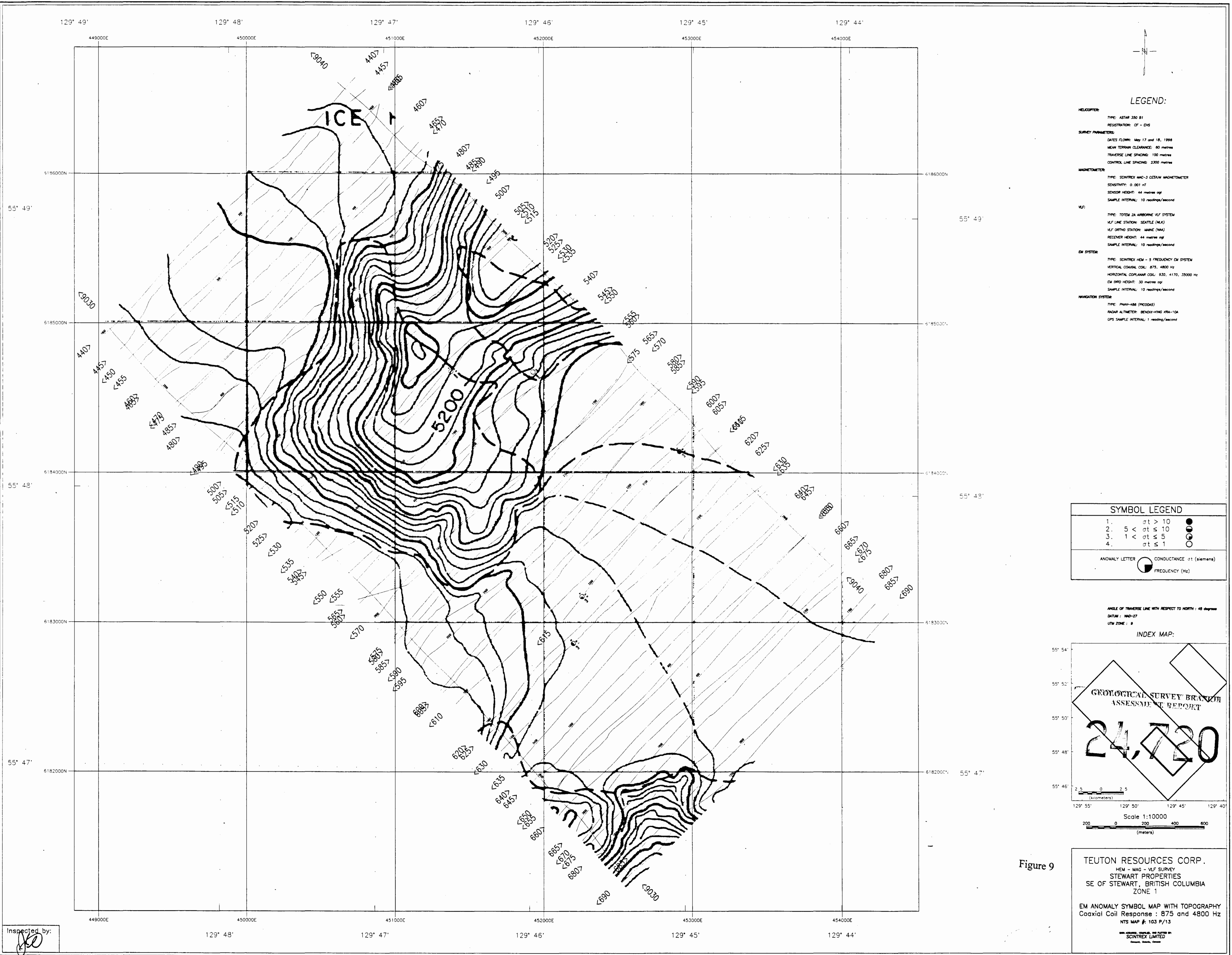
TEUTON RESOURCES CORP.
 HEM - MAG - VLF SURVEY
 STEWART PROPERTIES
 SE OF STEWART, BRITISH COLUMBIA
 ZONE 2

EM ANOMALY SYMBOL MAP WITH TOPOGRAPHY
 Coaxial Coil Response : 875 and 4800 Hz
 NTS MAP # 103 P/13

© 1998 TEUTON RESOURCES CORP.
 SCANTREX LIMITED

Inspected by:

Figure 8



LEGEND:

HELICOPTER:
 TYPE: ASTAR 350 B1
 REGISTRATION: CF - D15

SURVEY PARAMETERS:
 DATES FLOWN: May 17 and 18, 1998
 MEAN TERRAIN CLEARANCE: 80 metres
 TRAVERSE LINE SPACING: 100 metres
 CONTROL LINE SPACING: 2300 metres

MAGNETOMETER:
 TYPE: SCINTREX MAC-3 CESUM MAGNETOMETER
 SENSITIVITY: 0.001 nT
 SENSOR HEIGHT: 44 metres agl
 SAMPLE INTERVAL: 10 readings/second

VLF:
 TYPE: TOTEM 2A AIRBORNE VLF SYSTEM
 VLF LINE STATION: SEATTLE (NAA)
 VLF ORTHO STATION: MANE (NAA)
 RECEIVER HEIGHT: 44 metres agl
 SAMPLE INTERVAL: 10 readings/second

EM SYSTEM:
 TYPE: SCINTREX HEM - 5 FREQUENCY EM SYSTEM
 VERTICAL COAXIAL COIL: 875, 4800 Hz
 HORIZONTAL COPLANAR COIL: 930, 4170, 35000 Hz
 EM BRD HEIGHT: 30 metres agl
 SAMPLE INTERVAL: 10 readings/second

NAVIGATION SYSTEM:
 TYPE: PHAV-488 (PICOAS)
 RADAR ALTIMETER: BENDIX-KING KRA-10A
 GPS SAMPLE INTERVAL: 1 reading/second

SYMBOL LEGEND

- 1. $\sigma_t > 10$
- 2. $5 < \sigma_t \leq 10$
- 3. $1 < \sigma_t \leq 5$
- 4. $\sigma_t \leq 1$

ANOMALY LETTER CONDUCTANCE σ_t (siemens)
 FREQUENCY (Hz)

ANGLE OF TRAVERSE LINE WITH RESPECT TO NORTH: 48 degrees
 DATUM: NAD-27
 UTM ZONE: 8

INDEX MAP:

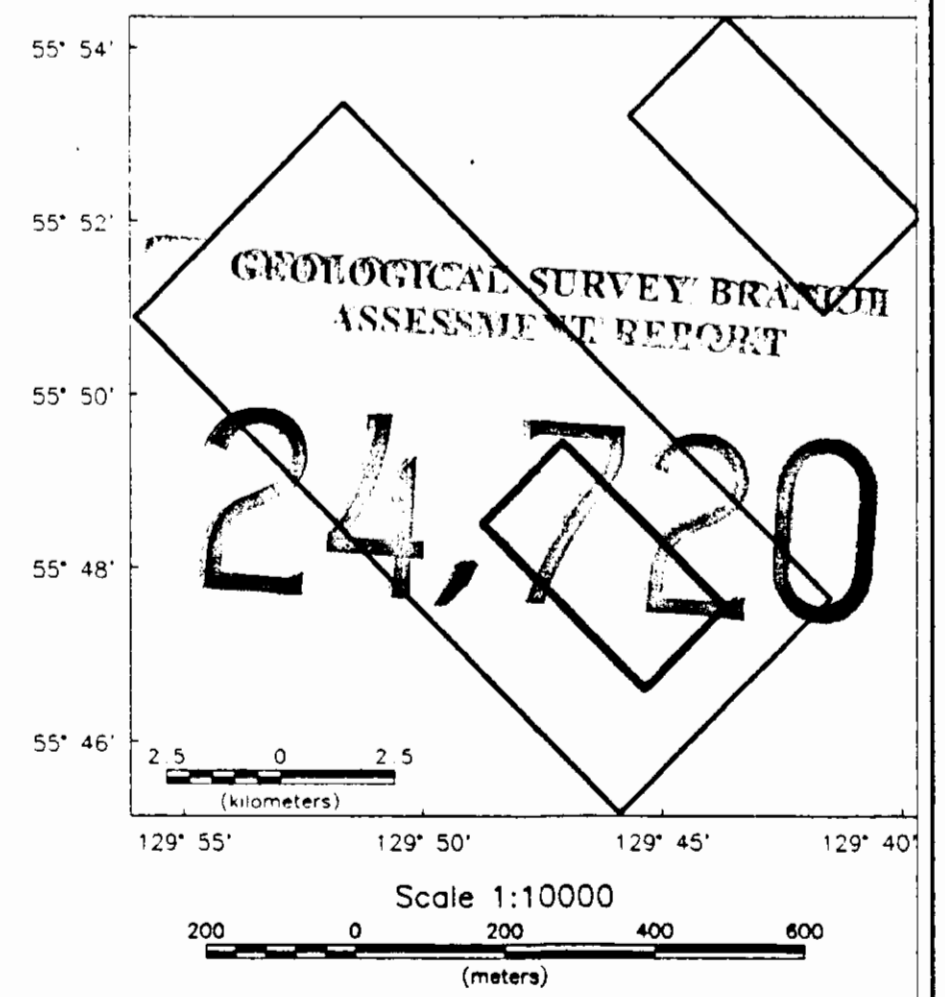


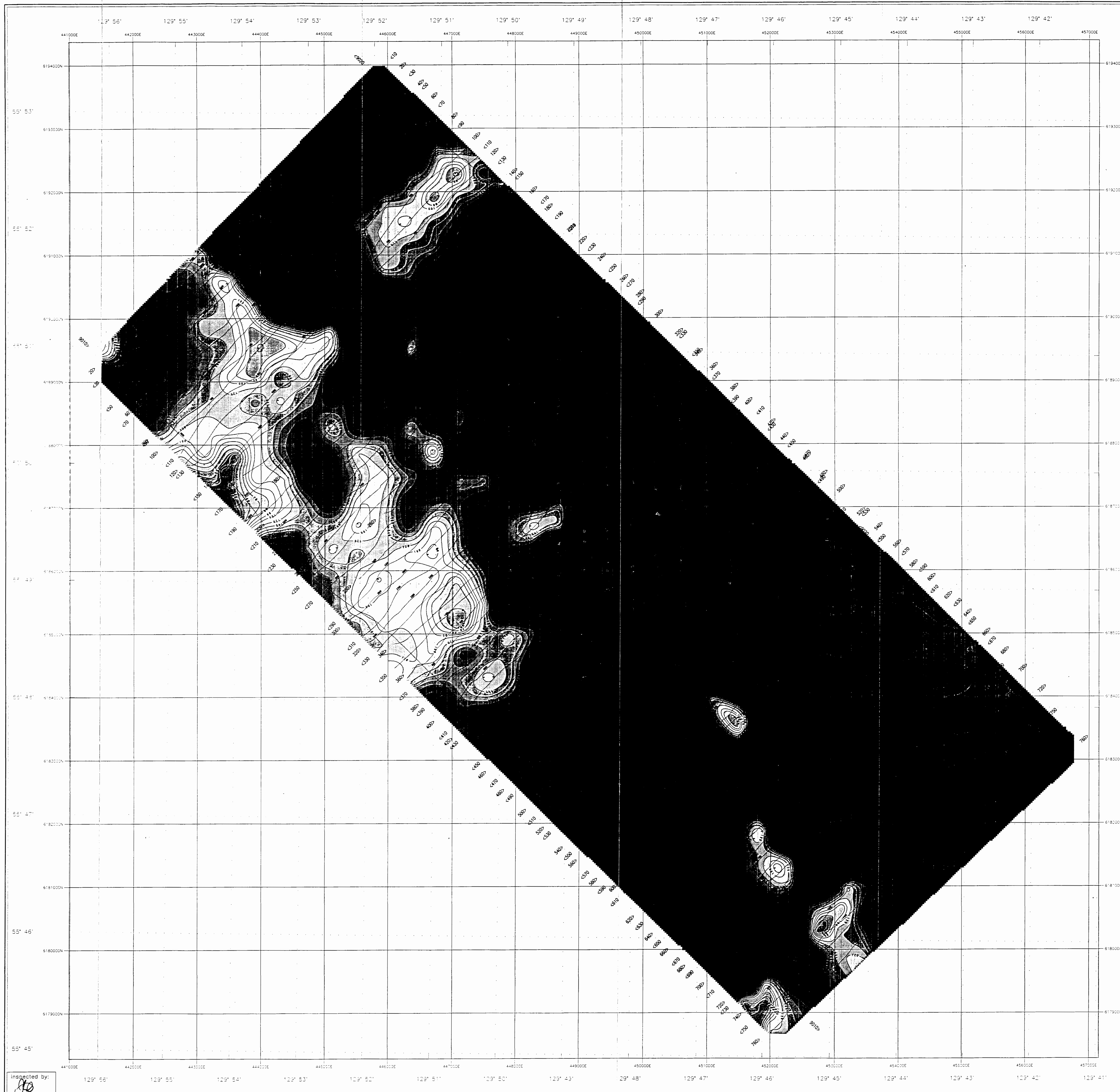
Figure 9

TEUTON RESOURCES CORP.
 HEM - MAG - VLF SURVEY
 STEWART PROPERTIES
 SE OF STEWART, BRITISH COLUMBIA
 ZONE 1

EM ANOMALY SYMBOL MAP WITH TOPOGRAPHY
 Coaxial Coil Response : 875 and 4800 Hz
 NTS MAP # 103 P/13

SCINTREX LIMITED
 Orem, Utah, Canada

Inspected by:



LEGEND:

HELICOPTER:
 TYPE: LETAR 500 B1
 REGISTRATION: CF - 048

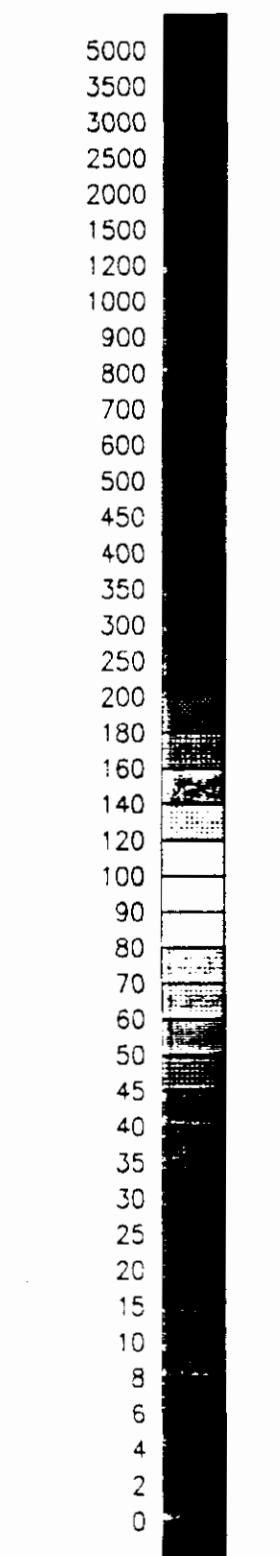
SURVEY PARAMETERS:
 DATES FLYING: MAY 17 AND 18, 1998
 BATTERY OPERATING CLEARANCE: 50 METERS
 TRANVERSE LINE SPACING: 200 METERS
 CONTROL LINE SPACING: 800 METERS

MONITORING:
 TYPE: SCOUTER WAC-1 CERMAL MONITOR/METER
 SENSITIVITY: 0.001 uV
 SENSOR HEIGHT: 44 METERS WFL
 SAMPLE INTERVAL: 10 METERS/RECORD

MAP:
 TYPE: TOTAL STATION AUTOMATIC ALF SYSTEM
 WFL LINE STATION: SEATTLE (NEAT)
 WFL GRID SYSTEM: WASHINGTON STATE
 REFLECTOR HEIGHT: 44 METERS WFL
 SAMPLE INTERVAL: 10 METERS/RECORD

EM SYSTEM:
 TYPE: SCOUTER WAC-1 3 FREQUENCY EM SYSTEM
 VERTICAL CHANNEL CODE: 875, 4800 Hz
 HORIZONTAL CHANNEL CODE: 830, 4170, 20000 Hz
 EM BIRD HEIGHT: 30 METERS WFL
 SAMPLE INTERVAL: 10 METERS/RECORD

NAVIGATION SYSTEM:
 TYPE: TRACER 488 (PROGAS)
 BATTERY NUMBER: WENGL 0002 (WAC-1)
 GPS SAMPLE INTERVAL: 1 METERS/RECORD



Apparent Resistivity (ohm-m)

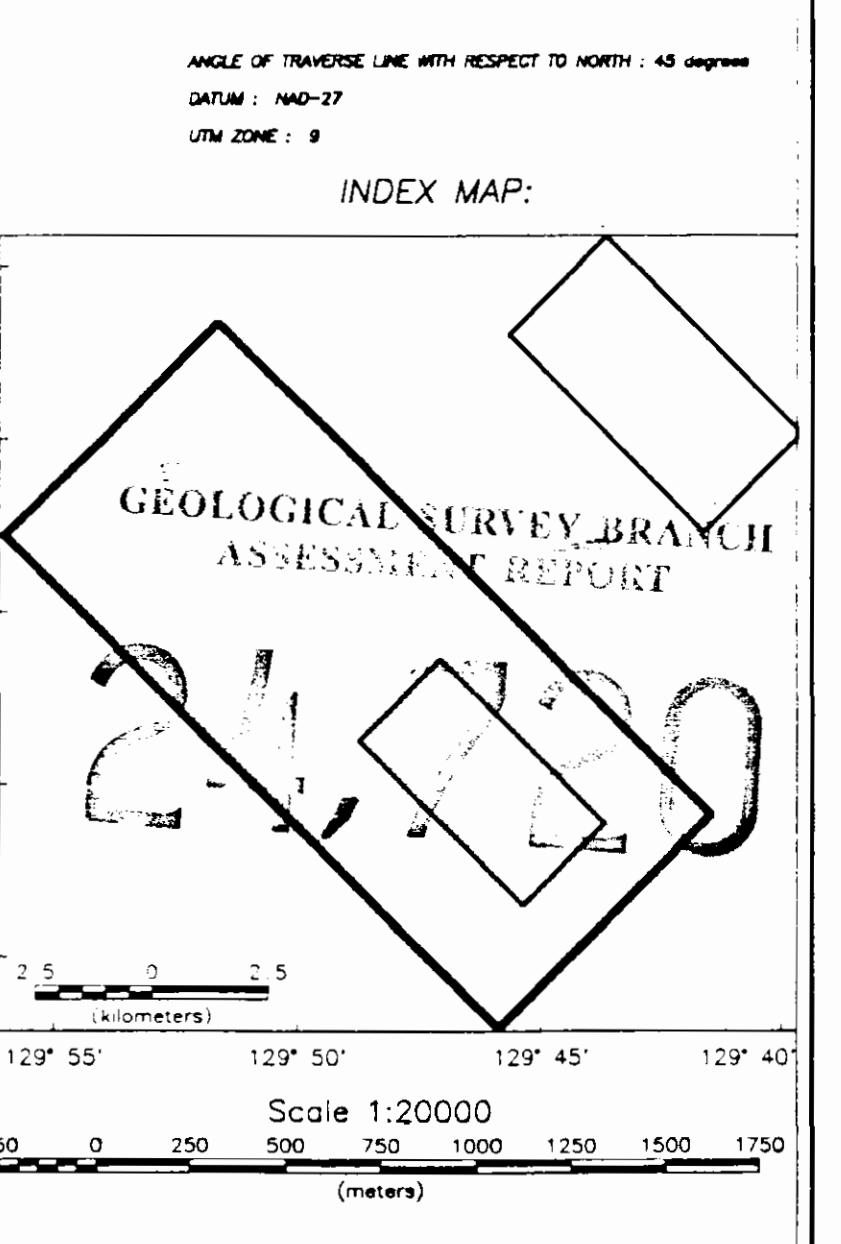


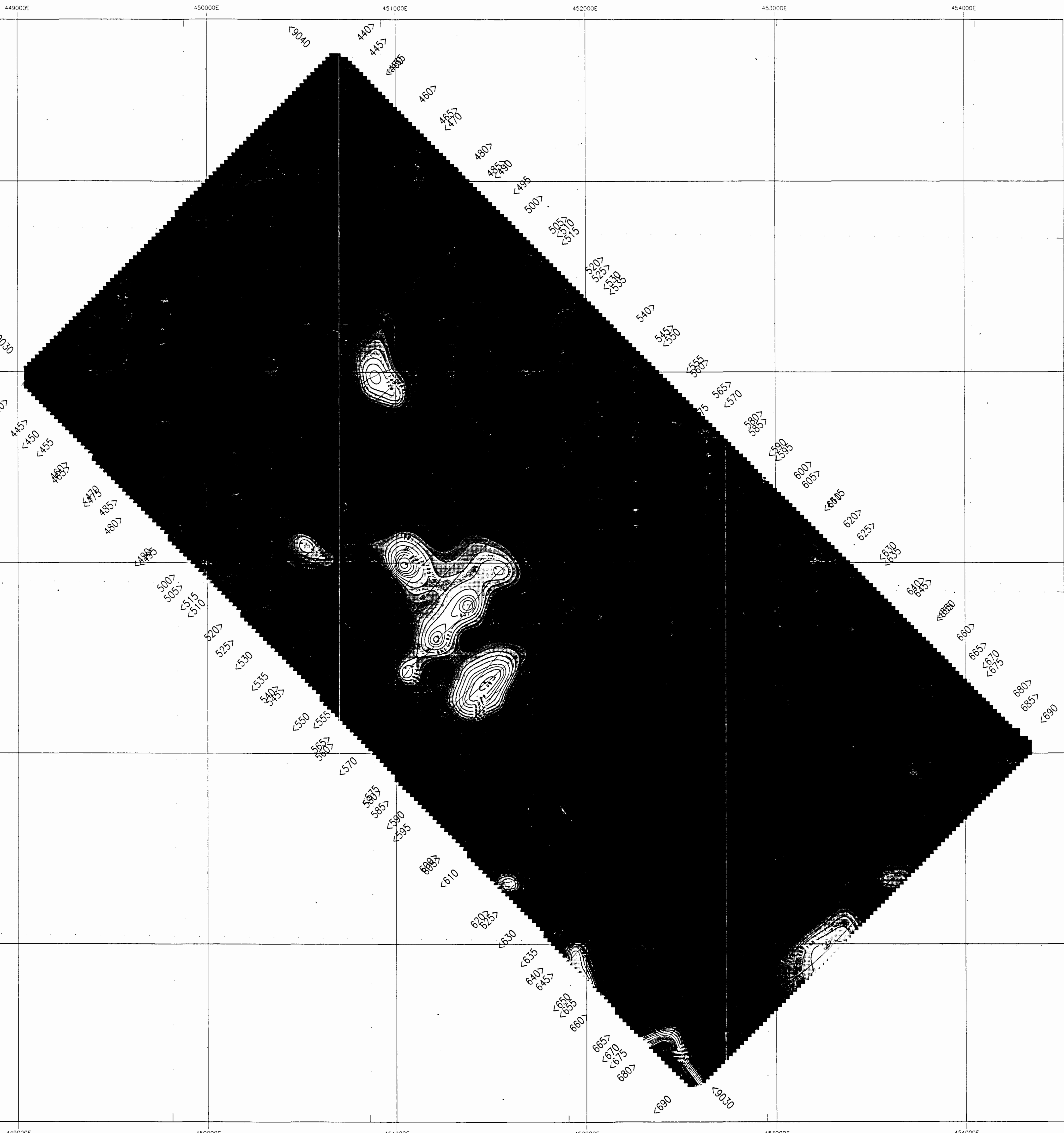
Figure 10

TEUTON RESOURCES CORP.
 WEM - MAP - WFL SURVEY
 STEWART PROPERTIES
 SE OF STEWART, BRITISH COLUMBIA
 ZONE 2
APPARENT RESISTIVITY MAP
 4170 Hz

WFL OPERATING CLEARANCE OF 50 METERS
 SCOUTER LIMITED
 1998

Inspected by: *JL*

129° 49' 129° 48' 129° 47' 129° 46' 129° 45' 129° 44'



LEGEND:

HELICOPTER:
TYPE: ASTAR 350 BT
REGISTRATION: CF - EWS

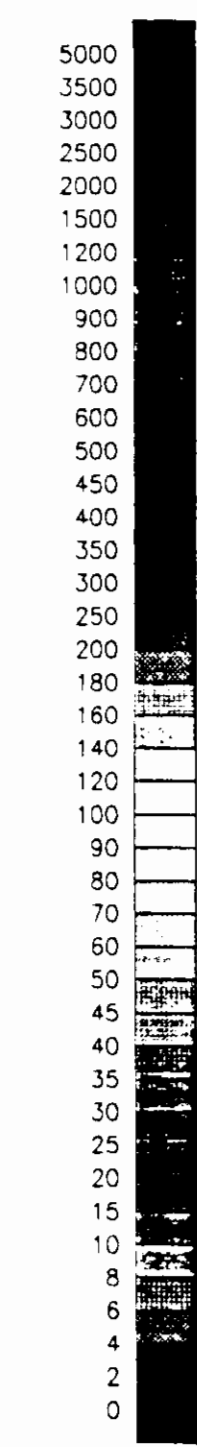
SURVEY PARAMETERS:
DATES FLOWN: May 17 and 18, 1996
MEAN TERRAIN CLEARANCE: 80 metres
TRAVERSE LINE SPACING: 100 metres
CONTROL LINE SPACING: 2300 metres

MAGNETOMETER:
TYPE: SCINTREX MAC-3 CESUM MAGNETOMETER
SENSITIVITY: 0.001 nT
SENSOR HEIGHT: 44 metres ogt
SAMPLE INTERVAL: 10 readings/second

VLF:
TYPE: TOTEM 2A AIRBORNE VLF SYSTEM
VLF LINE STATION: SEATTLE (NAK)
VLF ORTHO STATION: MANNE (NMA)
RECEIVER HEIGHT: 44 metres ogt
SAMPLE INTERVAL: 10 readings/second

EM SYSTEM:
TYPE: SCINTREX HEW - 5 FREQUENCY EM SYSTEM
VERTICAL COAXIAL COIL: 875, 4800 Hz
HORIZONTAL COPLANAR COIL: 330, 4170, 35000 Hz
EM BRD HEIGHT: 30 metres ogt
SAMPLE INTERVAL: 10 readings/second

NAVIGATION SYSTEM:
TYPE: INRIX-488 (PROLOGAS)
RADAR ALTIMETER: BENDIX-KING KRM-10A
GPS SAMPLE INTERVAL: 1 reading/second



Apparent Resistivity (ohm-m)

ANGLE OF TRAVERSE LINE WITH RESPECT TO NORTH: 45 degrees
DATUM: NAD-27
UTM ZONE: 9

INDEX MAP:

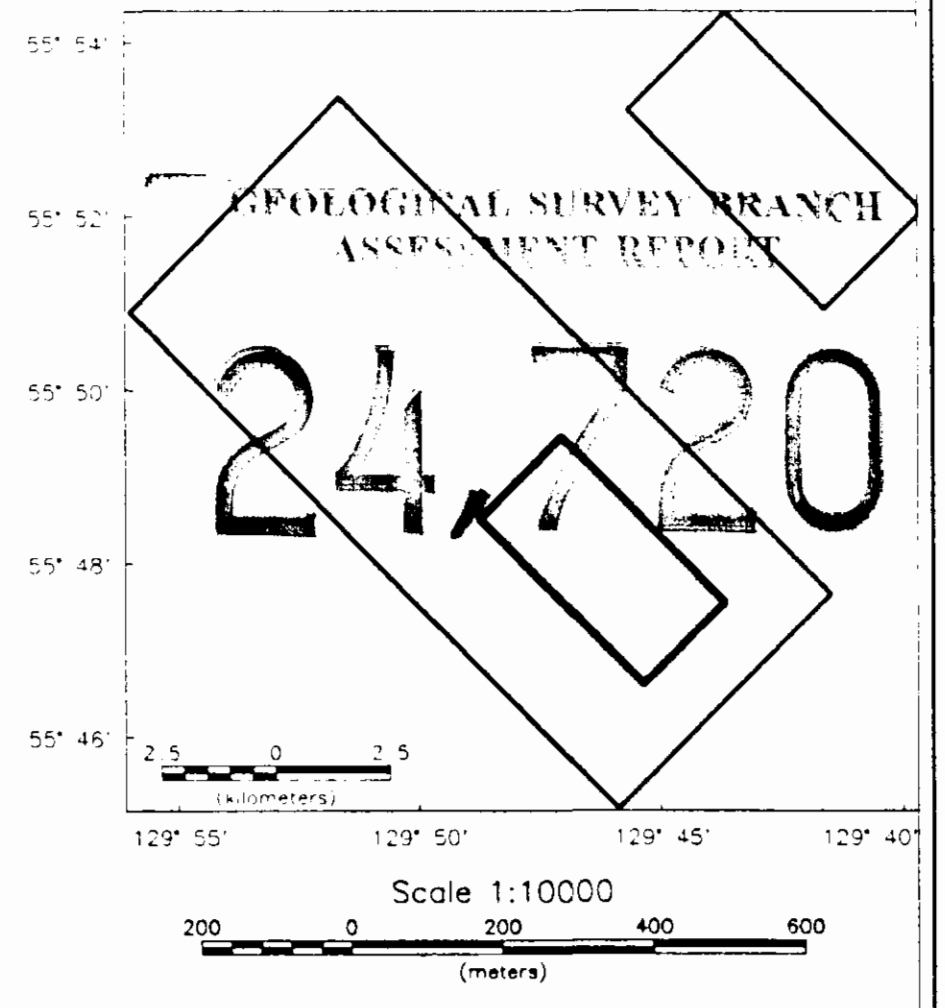


Figure 11

TEUTON RESOURCES CORP.
HEW - MAG - VLF SURVEY
STEWART PROPERTIES
SE OF STEWART, BRITISH COLUMBIA
ZONE 1
APPARENT RESISTIVITY MAP
4170 HZ

SCINTREX LIMITED

Inspected by:

129° 48' 129° 47' 129° 46' 129° 45' 129° 44'

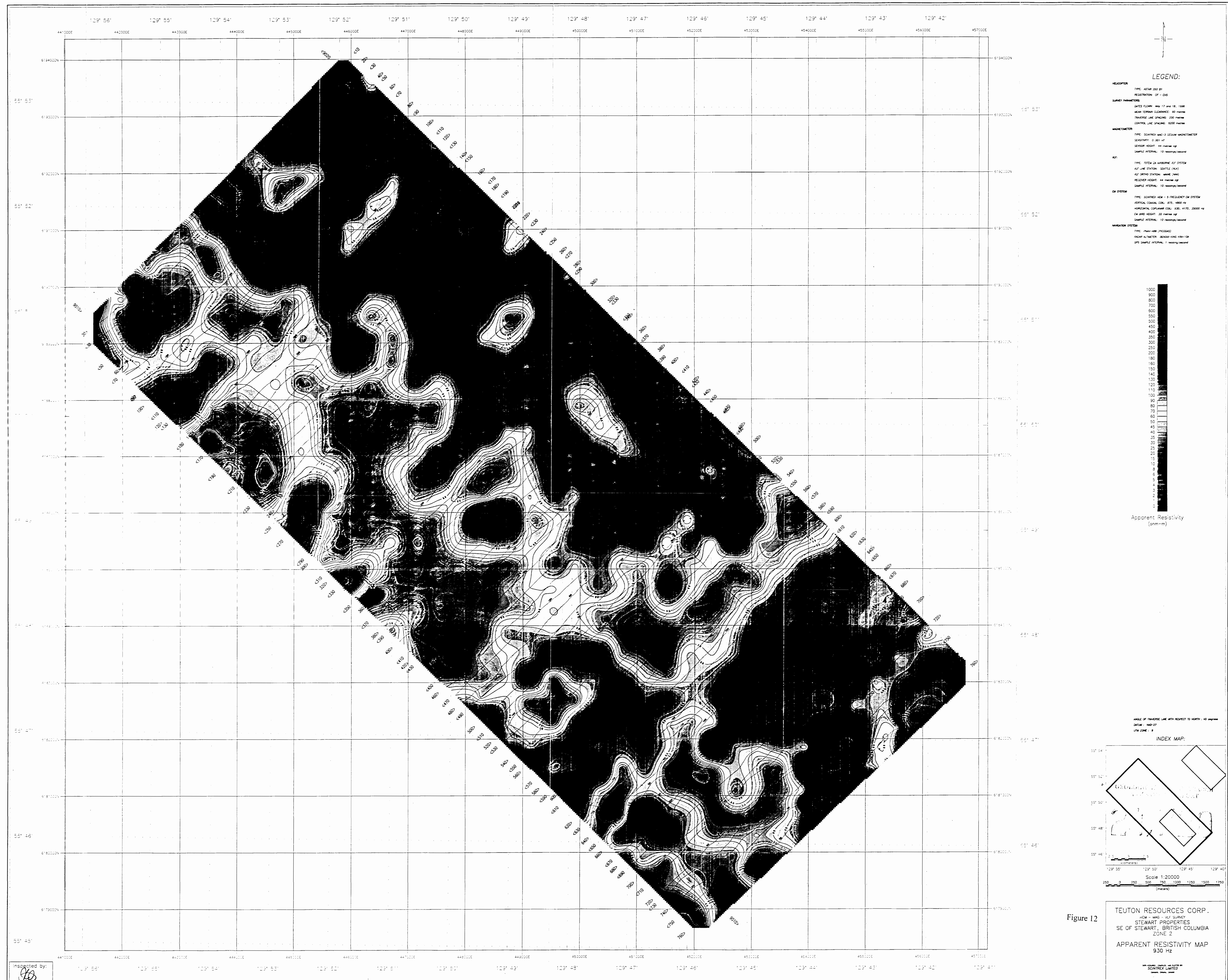
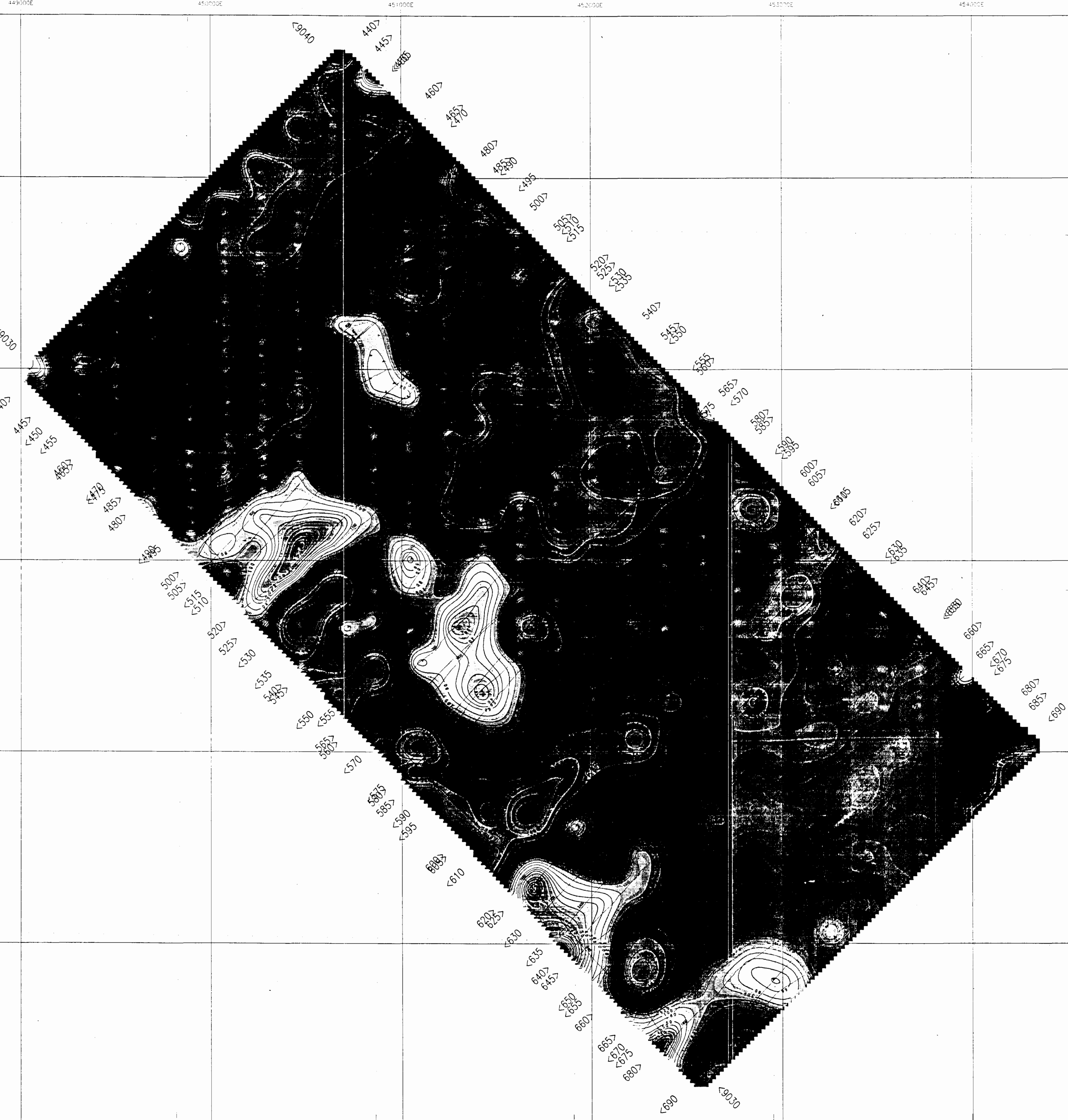


Figure 12

TEUTON RESOURCES CORP.
 HELIX 300 BT SURVEY
 STEWART PROPERTIES
 SE OF STEWART, BRITISH COLUMBIA
 ZONE 2
 APPARENT RESISTIVITY MAP
 930 Hz

Inspected by:
[Signature]

129° 43' 129° 48' 129° 47' 129° 46' 129° 45' 129° 44'



LEGEND:

HELICOPTER:
 TYPE: ASTAR 350 B1
 REGISTRATION: CF - EHS

SURVEY PARAMETERS:
 DATES FLOWN: May 17 and 18, 1998
 MEAN TERRAIN CLEARANCE: 60 metres
 TRAVERSE LINE SPACING: 100 metres
 CONTROL LINE SPACING: 2300 metres

MAGNETOMETER:
 TYPE: SCINTREX MAC-3 CESMAG MAGNETOMETER
 SENSITIVITY: 0.001 AT
 SENSOR HEIGHT: 44 metres OPI
 SAMPLE INTERVAL: 10 readings/second

VLF:
 TYPE: TOTEM 2A AIRBORNE VLF SYSTEM
 VLF LINE STATION: SEATTLE (MLK)
 VLF ORTHO STATION: WAGNE (WMA)
 RECEIVER HEIGHT: 44 metres OPI
 SAMPLE INTERVAL: 10 readings/second

EM SYSTEM:
 TYPE: SCINTREX HEM - 5 FREQUENCY EM SYSTEM
 VERTICAL COIL: 475, 4900 Hz
 HORIZONTAL COIL: 830, 4170, 35000 Hz
 EM ORTHO HEIGHT: 30 metres OPI
 SAMPLE INTERVAL: 10 readings/second

NAVIGATION SYSTEM:
 TYPE: INRA-486 (PRODAS)
 RADAR ALTIMETER: BENDIX-KING KDA-10A
 GPS SAMPLE INTERVAL: 1 reading/second



Apparent Resistivity (ohm-m)

ANGLE OF TRAVERSE LINE WITH RESPECT TO NORTH: 45 degrees
 DATUM: NAD-87
 UTM ZONE: 8

INDEX MAP:

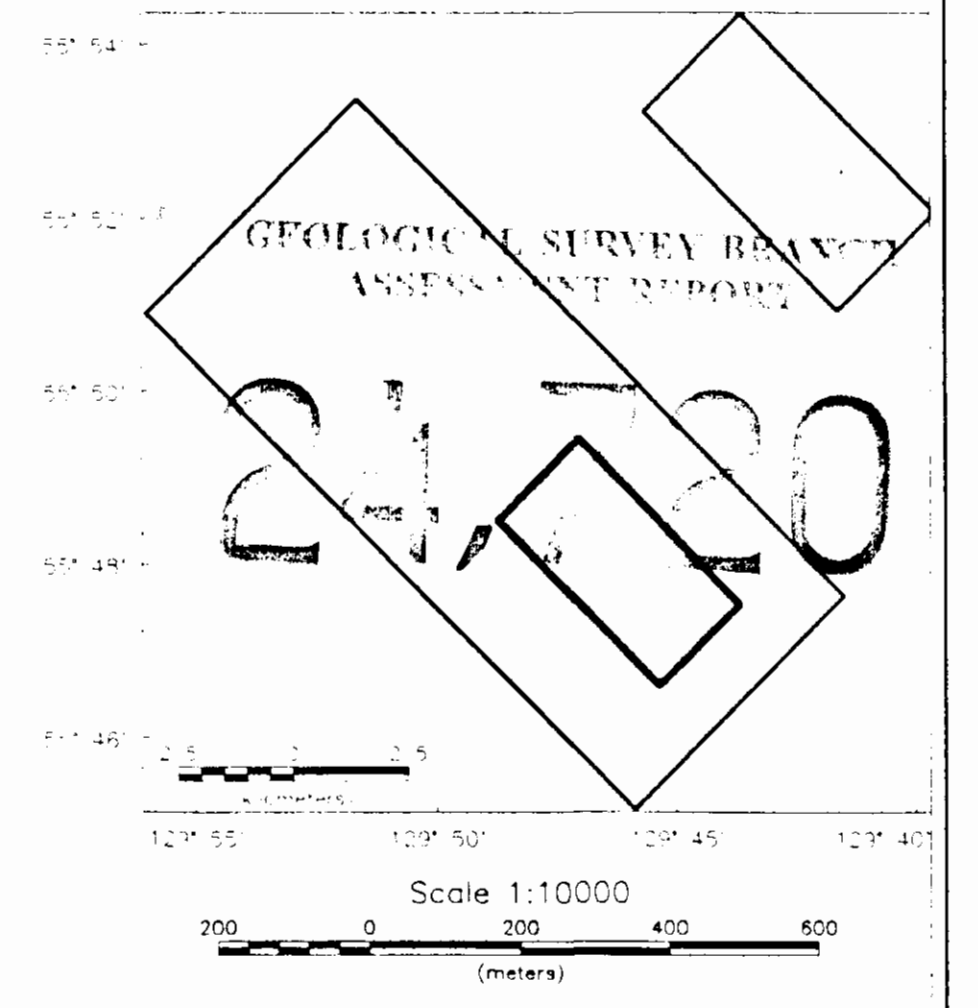
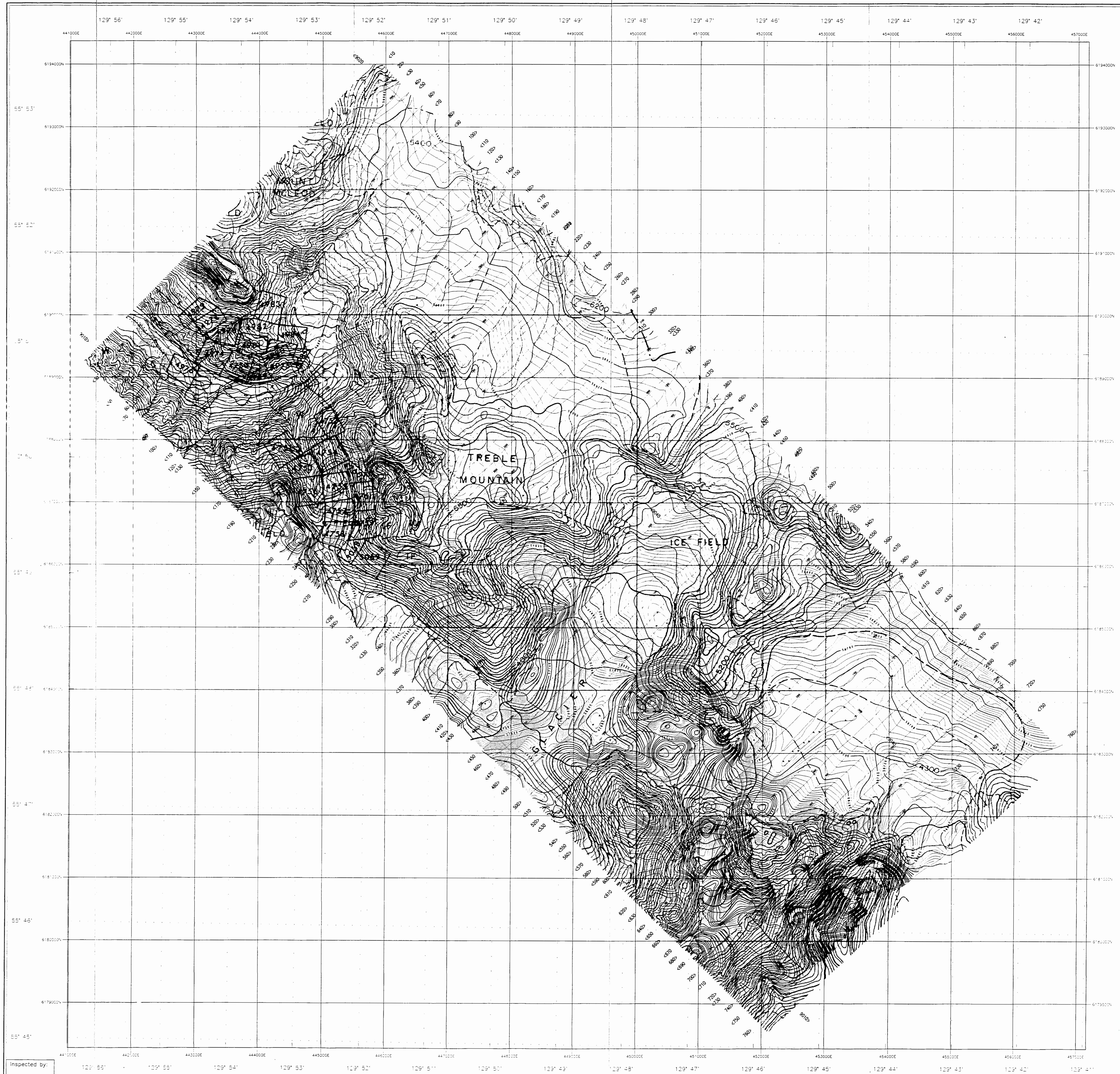


Figure 13

TEUTON RESOURCES CORP.
 HEM - MAG - VLF SURVEY
 STEWART PROPERTIES
 SE OF STEWART, BRITISH COLUMBIA
 ZONE 1
 APPARENT RESISTIVITY MAP
 930 Hz

DATA SOURCED, SAMPLED AND PLOTTED BY
 SCINTREX LIMITED
 (P.O. Box 1000, Vancouver, BC)

Inspected by:



LEGEND:

HELICOPTER:
 TYPE: AT-202 B1
 REGISTRATOR: OF - DHS

SURVEY PARAMETERS:
 DATES FLYING: MAY 17 AND 18, 1998
 MEAN TERRAIN ELEVATION: 60 meters
 TRAVERSE LINE SPACING: 200 meters
 CONTROL LINE SPACING: 800 meters

MAGNETOMETER:
 TYPE: SCANTY MAC-3 COPLANAR MAGNETOMETER
 SENSITIVITY: 0.001 nT
 SENSOR HEIGHT: 44 meters up
 SAMPLE INTERVAL: 10 readings/second

GPS:
 TYPE: TOTEM 2A ANTIWIND VLF SYSTEM
 VLF LINE STATION: SEATTLE (OKS)
 VLF GROUND STATION: VANCOUVER (VNS)
 RECEIVER HEIGHT: 44 meters up
 SAMPLE INTERVAL: 10 readings/second

GN SYSTEM:
 TYPE: SCANTY MAC-3 FREQUENCY GN SYSTEM
 VERTICAL CHANNEL CODE: 873, 400 Hz
 HORIZONTAL CHANNEL CODE: 830, 4170, 30000 Hz
 GN ANTENNA HEIGHT: 30 meters up
 SAMPLE INTERVAL: 10 readings/second

NAVIGATION SYSTEM:
 TYPE: TRIMBLE (PROLOG)
 MAGNETIC VECTOR: 0.0000000000000000
 GPS SAMPLE INTERVAL: 1 readings/second

CONTOUR INTERVALS:

3 m
 20 m
 100 m

ANGLE OF TRAVERSE LINE WITH RESPECT TO NORTH: 45 degrees
 DECLINATION: 40.00
 UTM ZONE: 18

INDEX MAP:

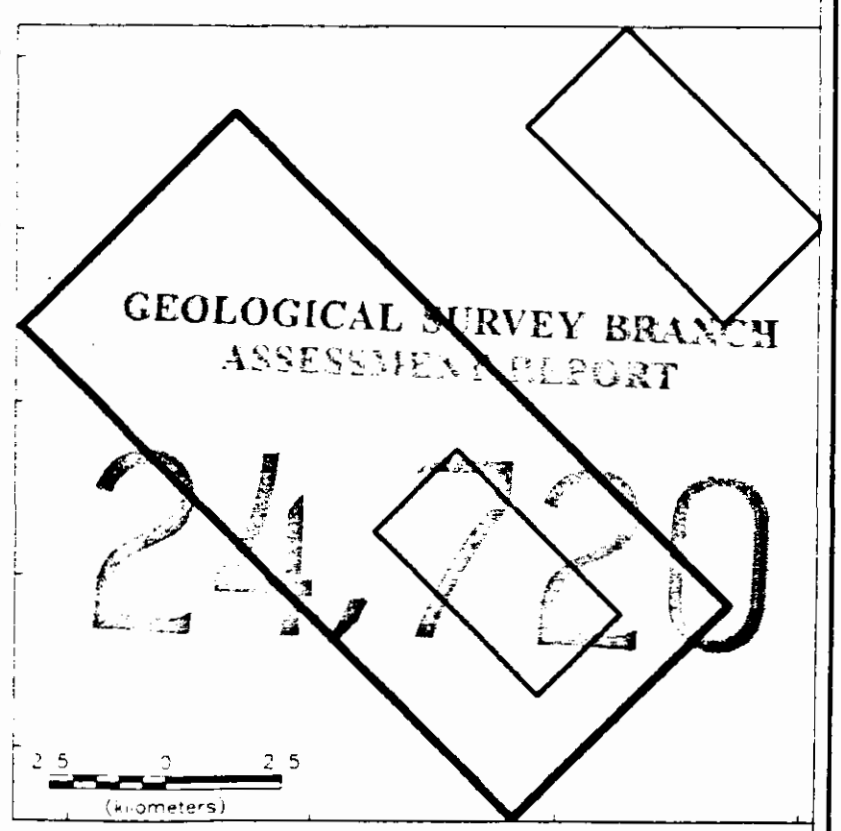


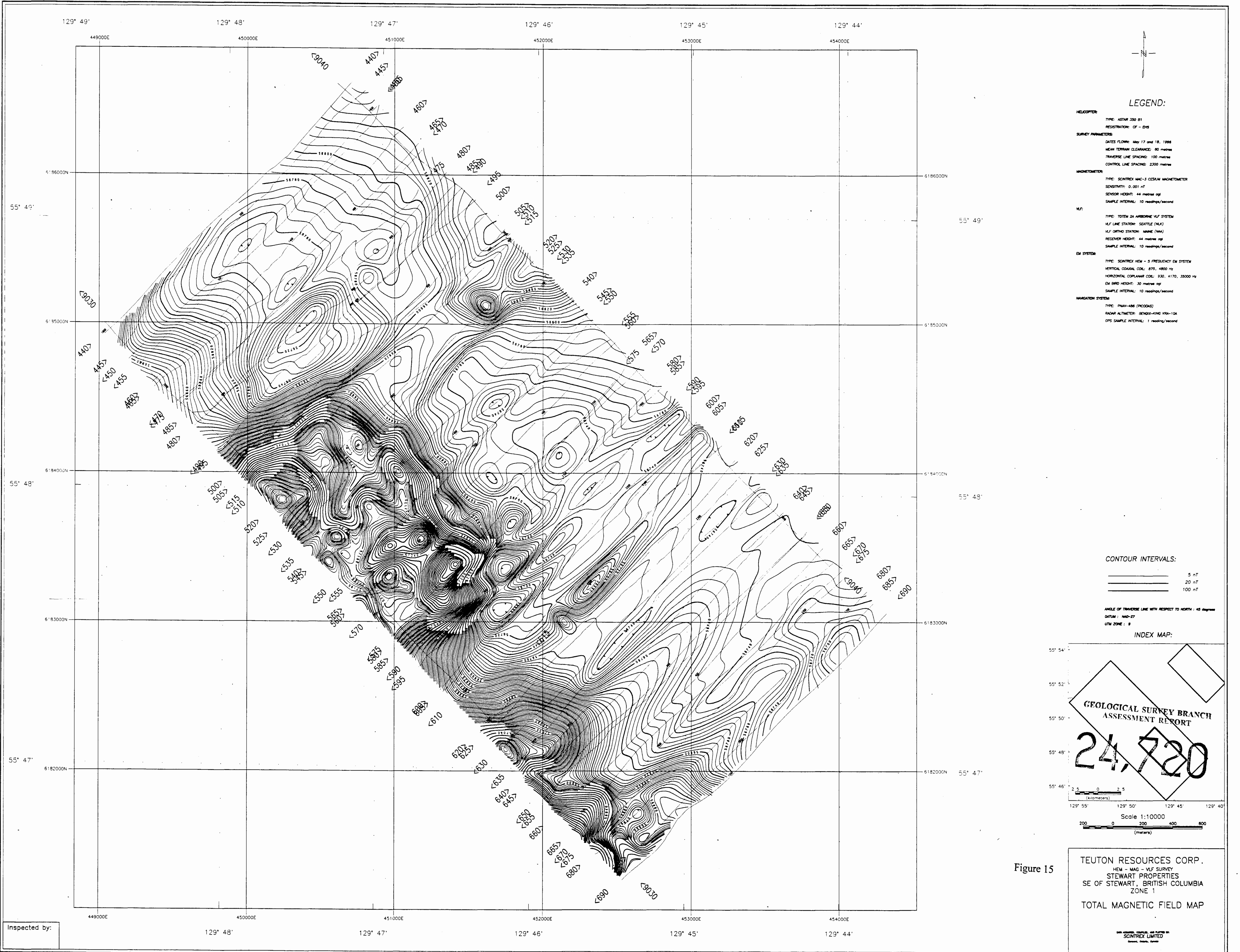
Figure 14

TEUTON RESOURCES CORP.
 MEM - MAG - VLF SURVEY
 STEWART PROPERTIES
 SE OF STEWART, BRITISH COLUMBIA
 ZONE 2

TOTAL MAGNETIC FIELD MAP WITH TOPOGRAPHY

NTS MAP # 103 #/13
 PREPARED AND PUBLISHED BY
 SCINTREX LIMITED
 VANCOUVER, CANADA

Inspected by:



LEGEND:

HELICOPTER:
 TYPE: ASTAR 350 B1
 REGISTRATION: CF - EHS

SURVEY PARAMETERS:
 DATES FLOWN: May 17 and 18, 1998
 MEAN TERRAIN CLEARANCE: 90 metres
 TRAVERSE LINE SPACING: 100 metres
 CONTROL LINE SPACING: 2300 metres

MAGNETOMETER:
 TYPE: SCINTREX MAC-3 CESIUM MAGNETOMETER
 SENSITIVITY: 0.001 nT
 SENSOR HEIGHT: 44 metres oyl
 SAMPLE INTERVAL: 10 readings/second

VLF:
 TYPE: TOTEM 2A AIRBORNE VLF SYSTEM
 VLF LINE STATION: SEATTLE (MLK)
 VLF ORTHO STATION: NAME (NAA)
 RECEIVER HEIGHT: 44 metres oyl
 SAMPLE INTERVAL: 10 readings/second

EM SYSTEM:
 TYPE: SCINTREX HEM - 5 FREQUENCY EM SYSTEM
 VERTICAL COIL CORE: 875, 4800 Hz
 HORIZONTAL COIL CORE: 330, 4170, 35000 Hz
 EM BIRD HEIGHT: 30 metres oyl
 SAMPLE INTERVAL: 10 readings/second

NAVIGATION SYSTEM:
 TYPE: PHAY-486 (PICO486)
 RADAR ALTIMETER: SENSIX-KONG 100-10A
 GPS SAMPLE INTERVAL: 1 reading/second

CONTOUR INTERVALS:

5 nT
 20 nT
 100 nT

ANGLE OF TRAVERSE LINE WITH RESPECT TO NORTH: 45 degrees
 DATUM: NAD-87
 UTM ZONE: 8

INDEX MAP:

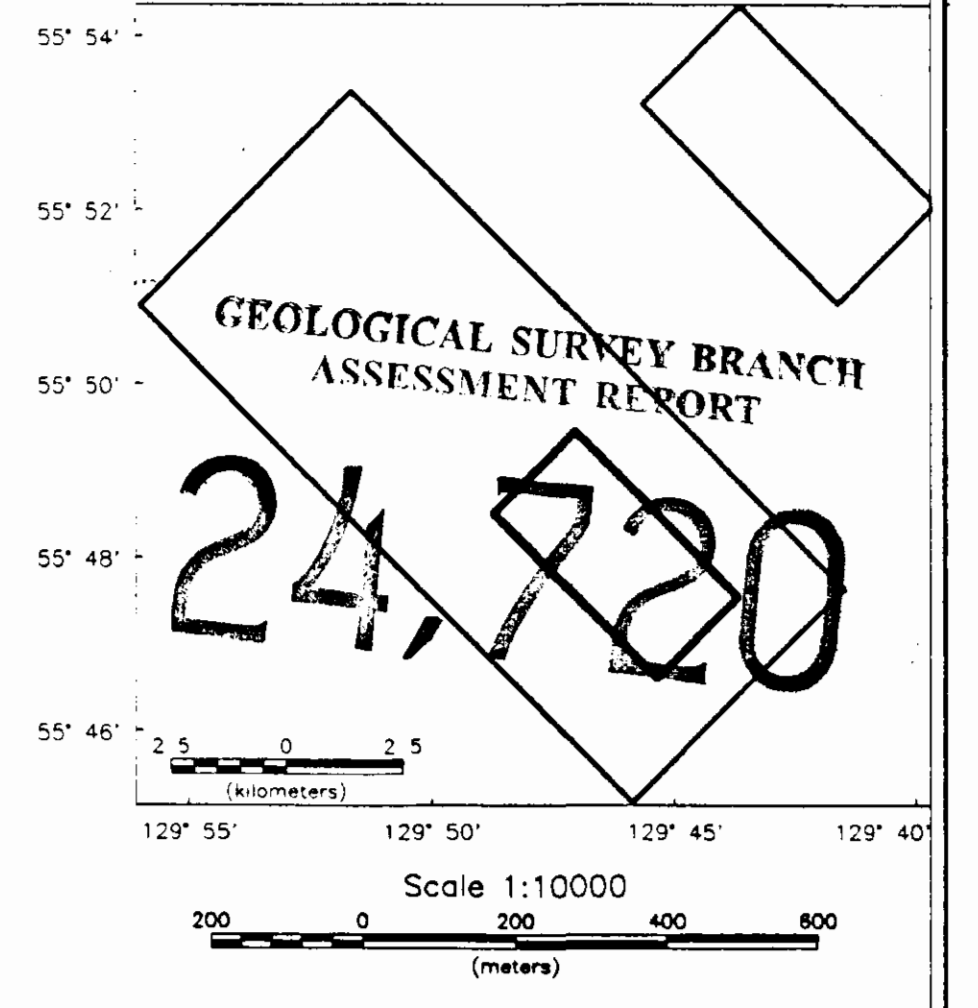


Figure 15

TEUTON RESOURCES CORP.
 HEM - MAG - VLF SURVEY
 STEWART PROPERTIES
 SE OF STEWART, BRITISH COLUMBIA
 ZONE 1
 TOTAL MAGNETIC FIELD MAP

SCINTREX LIMITED

Inspected by: