

LITHOGEOCHEMICAL and PROSPECTING REPORT

on the

LAHTE CREEK GOLD PROPERTY

NTS 104P/11

Latitude: 55°34'49" N

Longitude: 129°15'29"

**SKEENA MINING DIVISION
British Columbia**

for

Rubicon Minerals Corporation

by

Michael J. Gray, P.Geo., MSc.

August 1996

**GEOLOGICAL SURVEY BRANCH
ASSESSMENT REPORT**

24,990

EXECUTIVE SUMMARY

The purpose of this report is to document work conducted on the Lahte Creek Gold property in June and August of 1995 for assessment requirements.

The Lahte property is a gold and base metal prospect located 55 km southeast of Stewart, British Columbia and consists of 148 claim units. Logging roads from the Lavender mainline come to within 8 km of the property. The property is underlain by Jurassic Hazelton Group volcanics and Triassic Stuhini Group sediments that are locally intruded by Jurassic(?) intermediate intrusions that are locally highly altered and pyritic. The eastern portion of the property is underlain by fine-grained clastics of the Cretaceous Bowser Group.

Limited prospecting and sampling has identified a large sheared intermediate intrusion interpreted as similar to the intrusions at Red Mountain. This intrusion is pyritic and returned local anomalous gold (0.32 g/t Au) and elevated base metals (1000 ppm Zn). The northern portion of the property hosts a number of gossans from which gold up to 1.01 g/t was returned based on limited sampling.

It is recommended that additional lithogeochemical sampling be conducted in the area of the altered/sheared intrusion and in the northern portion of the property in gossans associated with the projection of a barite-sericite schist unit.

Lithochemical Report on the Lahte Creek Gold Property

-Table of Contents-

Executive Summary.....	i
1.0 Purpose.....	1
2.0 Background.....	1
2.1 Introduction.....	1
2.2 Location and Access.....	1
2.3 Tenure.....	1
2.4 Previous Work.....	4
2.5 Exploration Work in 1995.....	4
3.0 Geology.....	4
3.1 Regional Geology.....	4
3.2 Property Geology.....	4
4.0 Geochemistry.....	5
4.1 Prospecting and Geochemistry Results.....	5
5.0 Conclusions and Recommendations.....	5
6.0 Bibliography.....	6
Certificate.....	7
<u>List of Figures</u>	
Figure 1 Property location map.....	2
Figure 2 Claim map.....	3
Figure 3 Rock Sample Location Map.....	in pocket
Figure 4 Rock and Silt Gold Geochemistry Values.....	In pocket
Figure 5 Rock and Silt Copper Geochemistry Values.....	In pocket
<u>List of Tables</u>	
Table 1 Claim Tenure.....	1
<u>Appendices</u>	
Appendix I Cost Statement.....	8
Appendix II ICP + Au Rock Geochem Results.....	9
Appendix II XRF Whole Rock Lithochem Results	25
Appendix III ICP + Au Silt Geochem Results	32
Appendix IV Rock Sample Descriptions	47

1.0 Purpose

This report is to document fieldwork conducted on the Lahte Creek Property for assessment requirements.

2.0 Background

2.1 Introduction

The Lahte Creek Property is a Au-Ag "Red Mountain-type" prospect consisting of 148 claim units. The claims were staked based on anomalous Au (224, 229ppb) from a government silt geochem RGS survey released on June 2nd, 1995. Pre-release compilation of existing silt geochem data indicated a favourable environment based on highly anomalous As-Zn-Cu-Hg silt geochem and a geological setting similar to that at the Red Mountain Au Deposit. The property is underlain by Late Triassic to Early Jurassic mafic to intermediate volcanics and sediments and by Late Jurassic to Early Cretaceous sediments. These rocks are cut by feldspar porphyry intrusives (Jurassic?) and by felsic hornblende porphyry dykes of probable Tertiary age. Gold mineralization from outcrop is locally associated with carbonate alteration (up to 0.32g/t Au) in the west central area and with a barite-Zn-Pb section of stratigraphy (up to 1.01g/t Au) in the NW portion of the claims.

2.2 Location and Access

The Lahte Creek gold property is located 55 km southeast of Stewart 45 km south-southwest of the Meziadin logging camp and 155 km northwest of Smithers, B.C. (Skeena Mining Division; NTS 103P/11; Figure 1). A logging road off the Lavendar mainline comes within 8 km of the property. The property is easily accessed by helicopter from Meziadin or Stewart.

2.3 Tenure

The claims are held by L. Warren and L. Hewitt and beneficially owned by Rubicon Minerals Corporation (Figure 2). The claims are in good standing until June 1997 once assessment credits have been applied. There are no underlying agreements on the property. Pertinent claim data are listed below.

Table 1 Claim Tenure

CLAIM NAME	# UNITS	TENURE NO.	EXPIRY DATE
Lah-1	20	336796	June 2/1997
Lah-2	18	336659	June 7/1997
Lah-5	20	336661	June 7/1997
Lah-6	20	336662	June 7/1997
Lah-7	18	336663	June 9/1998

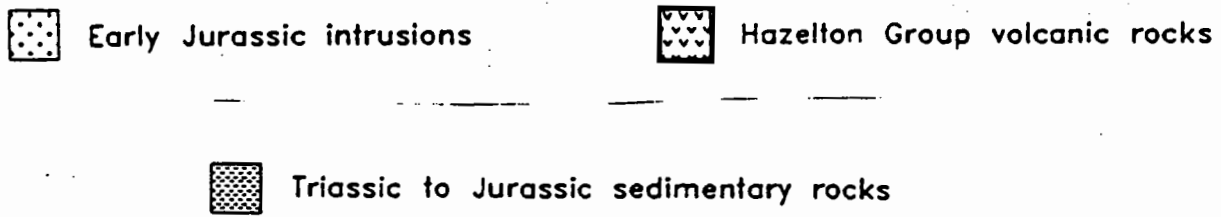
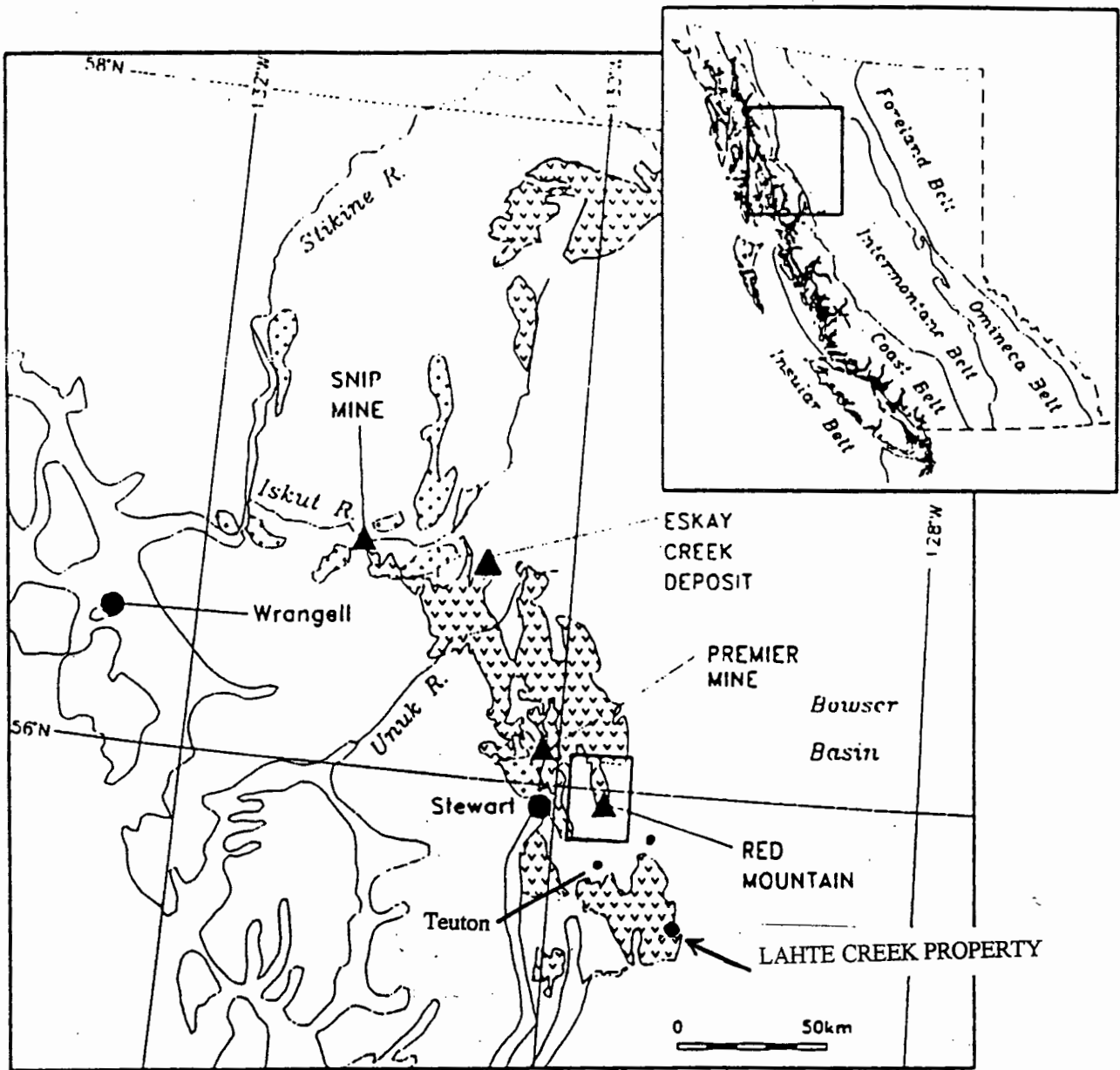


Figure 1. Property Location Map

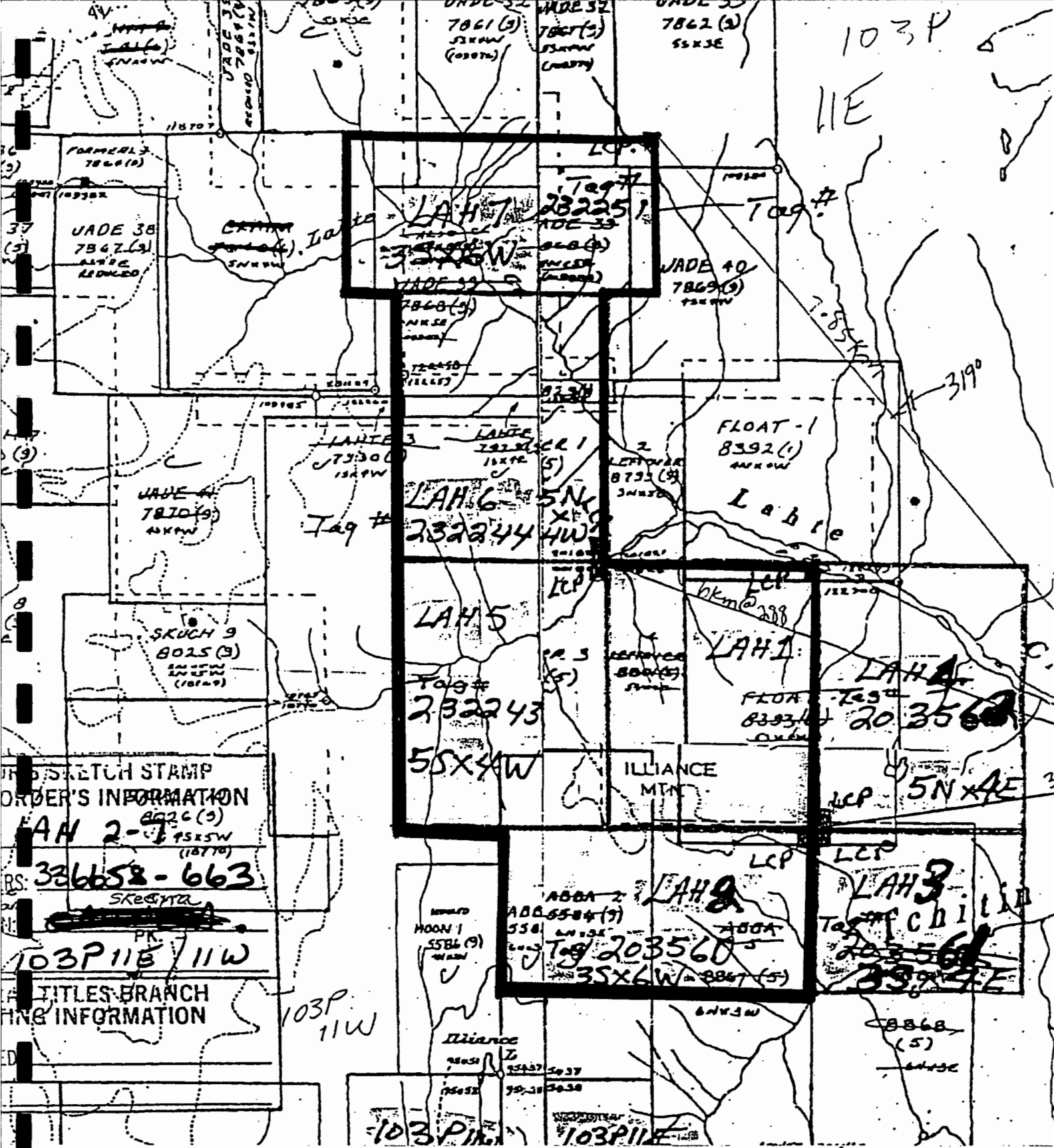


Figure 2 Claim Map
(1:50,000 scale)

2.4 Previous Work

In 1981, Hudson Bay Exploration and Development Co. Ltd., as part of a base metal VMS exploration program, collected soils (52; on 2 N-S contour lines, 200m apart on the SE portion and just east of the Lah-6 claim), prospecting, rock sampling (2) and reconnaissance mapping. The program identified the source area of rhyolitic Zn-Pb-Cu-Ag float boulders on the south side of Lahte Creek; these boulders are derived from the historic "Leftover" Showing (just west of the Lahte property boundary). Extensive "sheared volcanics" with lenses of felsic(?) porphyry were roughly mapped.

In 1989, Dolly Varden Mineral Inc., as part of a base-precious metal volcanogenic massive sulphide (VMS) program, collected pan con silts (4) rocks (9) and conducted prospecting, and reconnaissance mapping all on the now "Lah-8" claim (6 man days from a fly camp). Significant Au and base metal values were returned from outcrop, skree and float. Gold values ranged up to 20240ppb in float from "narrow veins". A number of gossans were identified, including a Ba-Zn-Pb showing within a 40m thick intermediate tuffaceous package marked by 2m thick quartz-sericite-pyrite horizons. Samples returned 433ppm Zn and 447ppm Pb from grab samples and 48295ppm Zn and 14471ppm Pb from selected high grade mineralization. Pan con silts returned 2430ppb and 4040ppb Au from the northwest fork of Lahte creek, however, these samples were not plotted on the assessment maps. Significantly, many gossans were not prospected or sampled from the northwest drainage due to difficulties in crossing the creeks. Although Dolly Varden interpreted the showing as stratiform mineralization, they expected more felsic stratigraphy than was observed (using the Dolly Varden VMS Deposit Model). Follow-up work was recommended.

2.5 Exploration Work in 1995

Cyprus Canada Inc. and Rubicon Minerals Corporation staked 148 units during June 1995 based on a Au regional gold silt geochem release and collected rocks (140 all for ICP and Au; and 54 for whole rock analysis - XRF), silts (13), moss mats (3) and soils (1) and conducted prospecting.

3.0 Geology

3.1 Regional Geology

The region southeast of Stewart is predominantly underlain by volcanic and volcanoclastic rocks of the lower Jurassic Hazelton Group and similar upper Triassic to older rocks. These strata are intruded by an Early Jurassic to mid-Cretaceous plutonic rocks and younger mid Tertiary dykes and related intrusions of the Portland Canal Dyke swarm. Farther to the east and southeast, the region is underlain by Late Jurassic to mid Cretaceous clastics of the Bowser Group.

3.2 Property Geology

The west portion of the property is mainly underlain by Hazelton Group volcanoclastics typified by purple and green agglomeratic units. Triassic Stuhini Group sediments lie to the east of the Hazelton Group and consist of mainly argillites and cherts. The east most portion of the property is underlain fine-grained clastics of the Bowser Group that dip shallow to moderately to the east and that may be in thrust fault contact with these sediments. The Hazelton and Stuhini Group rocks are locally intruded by Jurassic(?) feldspar porphyry intrusions that are locally extensively altered and pyritic. All units throughout the property are cut by fresh hornblende-feldspar porphyry Tertiary dykes.

4.0 Geochemistry

4.1 Prospecting and Geochemistry Results

Field work on the property by Rubicon has identified a large area of sheared, altered and pyritized "Porphyry" that trends northwest on Lah-5 and Lah-6 and may have a strike length of up to (at least?) five kilometers. Sampling from part of this zone returned one gold value (320ppb) an elevated silt sample (225ppb Au) and several elevated base metal values. Only a restricted portion of this zone has been sampled, and it therefore warrants more prospecting.

In the northwest part of the property, one sample located twenty metres to the northwest of a barite-base metal showing returned 1.01g/t Au. On strike to the northwest of this sample is a large gossan that is evident from the helicopter and is noted on Dolly Varden's assessment map, but was not sampled. Two silt samples collected from the north Lahte drainage in this area returned values of 625ppb and 125ppb Au. These results precipitated the acquisition of an additional claim by Rubicon to cover this prospective area which requires more work.

In the main Lahte Creek area just north of Lah-1 and onto Lah-5 a number of silicified and/or felsic boulders were sampled during prospecting and returned highly elevated Zn, Pb, Ag values. The boulders are interpreted to have been derived from just southwest of the Lah-5 claim where the historic "Leftover" showing is located.

5.0 Conclusions and Recommendations

The Lahte Creek Gold property has a geological setting similar to the Premier Mine and the Red Mountain Gold Deposit. The 1995 geochemical release by the BCGS for gold and additional elements, and follow-up work by Rubicon shows a cluster of adjacent drainages with elevated gold values in silts. Previous work was mainly focused on the base metal potential even though significant gold values were returned (eg Dolly Varden). Rubicon's work has established that a favourable geological and geochemical setting for a Red Mountain or Premier-Type gold target exists on the property.

It is recommended that systematic lithochem and contour soil sampling, in conjunction with detailed prospecting, geological mapping, be conducted on selected areas of the property to explore the gold potential of the "sheared pyritic intrusion and to explore the base and precious metal potential of the north portion of the property with known showings.

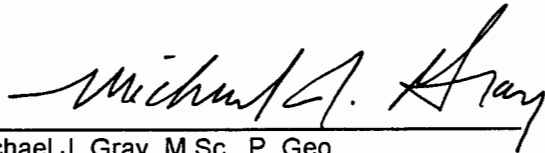
BIBLIOGRAPHY

BC Assessment Report #'s: 20,086; 9823; 8904

CERTIFICATE

I, MICHAEL GRAY, of 3442 Church Street, North Vancouver, do certify that:

1. I am a Consulting Geologist, registered with the Association of Professional Engineers and Geoscientists of British Columbia since 1993.
2. I am a graduate of the University of British Columbia with a B.Sc (Geology 1985), and Laurentian University of Ontario with an M.Sc. (Mineral Deposits Geology, 1995).
3. I have practiced by profession throughout Canada and the United States continuously since 1985.
4. The foregoing report on the Lahte property is based on personal experience and observations made on the project while on the property employed by Rubicon Minerals Corporation (later name changed to Rubicon Management Ltd.)
5. I own shares and am a director and senior officer of Rubicon Minerals Corporation.



Michael J. Gray, M.Sc., P. Geo.
Vancouver, B.C.
25 August 1996

Appendix I

Cost Statement

Wages

Garfield MacVeigh (Geologist) 3 days @ \$500/day	= \$1500
Michael Gray (Geologist) 5.5 days @ \$375/day	= \$1925
Pat Suratt (Prospector) 2.5 @ \$250/day	= \$ 625

Helicopter

June 7-9 th 2 hours @ \$800/hr (including fuel)	= \$ 1600
August 14-16 th 3.2 hours @ \$800/hr (including fuel)	= \$ 2500

Truck Rental

June 7-9 th 3 days @ \$100/day (including fuel)	= \$ 300
August 14-16 th 4.5 days @ \$100/day (including fuel)	= \$ 450

Accommodation and Meals

11 days @ \$50/day	= \$ 550
--------------------	----------

Airfare

Vancouver to Smithers (G. MacVeigh and M. Gray)	= \$ 800
---	----------

Assays

50 rocks ICP @ \$12/sample	= \$ 600
50 rocks Whole Rock @ \$20/sample	= \$1000
16 silt samples @ \$20/sample	= \$ 320
Sample shipping 100 rocks @ \$1/sample	= \$ 100

Report

Report Writing 2 days at \$375/day	= \$ 750
Computer Drafting 1.0 days at \$200/day	= \$ 200

Total	=12,220
--------------	----------------

Appendix II

ICP + Au Rock Geochem Results



Chemex Labs Ltd.

Analytical Chemists * Geochemists * Registered Assayers

212 Brooksbank Ave., North Vancouver
British Columbia, Canada V7J 2C1
PHONE: 604-984-0221 FAX: 604-984-0218

CYPRUS CANADA INC.
C/O RUBICON MINERALS
119 53RD ST.
DELTA, BC
V4M 3B3

A9526354

Comments: ATTN: MICHAEL GRAY CC: STEVE PARRY

CERTIFICATE

A9526354

(MUB) - CYPRUS CANADA INC.

Project: BC302
P.O. #: 950804/805

Samples submitted to our lab in Vancouver, BC.
This report was printed on 8-SEP-95.

LAHTE

SAMPLE PREPARATION

CHEMEX CODE	NUMBER SAMPLES	DESCRIPTION
205	87	Geochem ring to approx 150 mesh
226	87	0-3 Kg crush and split
3204	87	Save 1 Kg reject for 90 days
229	87	ICP - AQ Digestion charge

* NOTE 1:

The 32 element ICP package is suitable for trace metals in soil and rock samples. Elements for which the nitric-aqua regia digestion is possibly incomplete are: Al, Ba, Be, Ca, Cr, Ga, K, La, Mg, Na, Sr, Ti, Tl, W.

ANALYTICAL PROCEDURES

CHEMEX CODE	NUMBER SAMPLES	DESCRIPTION	METHOD	DETECTION LIMIT	UPPER LIMIT
494	87	Au g/t: Fuse 30 g sample	FA-AAS	0.005	12.00
2118	87	Ag ppm: 32 element, soil & rock	ICP-AES	0.2	200
2119	87	Al %: 32 element, soil & rock	ICP-AES	0.01	15.00
2120	87	As ppm: 32 element, soil & rock	ICP-AES	2	10000
2121	87	Ba ppm: 32 element, soil & rock	ICP-AES	10	10000
2122	87	Be ppm: 32 element, soil & rock	ICP-AES	0.5	100.0
2123	87	Bi ppm: 32 element, soil & rock	ICP-AES	2	10000
2124	87	Ca %: 32 element, soil & rock	ICP-AES	0.01	15.00
2125	87	Cd ppm: 32 element, soil & rock	ICP-AES	0.5	100.0
2126	87	Co ppm: 32 element, soil & rock	ICP-AES	1	10000
2127	87	Cr ppm: 32 element, soil & rock	ICP-AES	1	10000
2128	87	Cu ppm: 32 element, soil & rock	ICP-AES	1	10000
2150	87	Fe %: 32 element, soil & rock	ICP-AES	0.01	15.00
2130	87	Ga ppm: 32 element, soil & rock	ICP-AES	10	10000
2131	87	Hg ppm: 32 element, soil & rock	ICP-AES	1	10000
2132	87	K %: 32 element, soil & rock	ICP-AES	0.01	10.00
2151	87	La ppm: 32 element, soil & rock	ICP-AES	10	10000
2134	87	Mg %: 32 element, soil & rock	ICP-AES	0.01	15.00
2135	87	Mn ppm: 32 element, soil & rock	ICP-AES	5	10000
2136	87	Mo ppm: 32 element, soil & rock	ICP-AES	1	10000
2137	87	Na %: 32 element, soil & rock	ICP-AES	0.01	5.00
2138	87	Ni ppm: 32 element, soil & rock	ICP-AES	1	10000
2139	87	P ppm: 32 element, soil & rock	ICP-AES	10	10000
2140	87	Pb ppm: 32 element, soil & rock	ICP-AES	2	10000
2141	87	Sb ppm: 32 element, soil & rock	ICP-AES	2	10000
2142	87	Sc ppm: 32 elements, soil & rock	ICP-AES	1	10000
2143	87	Sr ppm: 32 element, soil & rock	ICP-AES	1	10000
2144	87	Ti %: 32 element, soil & rock	ICP-AES	0.01	5.00
2145	87	Tl ppm: 32 element, soil & rock	ICP-AES	10	10000
2146	87	U ppm: 32 element, soil & rock	ICP-AES	10	10000
2147	87	V ppm: 32 element, soil & rock	ICP-AES	1	10000
2148	87	W ppm: 32 element, soil & rock	ICP-AES	10	10000
2149	87	Zn ppm: 32 element, soil & rock	ICP-AES	2	10000



Chemex Labs Ltd.

Analytical Chemists * Geochemists * Registered Assayers

212 Brooksbank Ave., North Vancouver
British Columbia, Canada V7J 2C1
PHONE: 604-984-0221 FAX: 604-984-0218

Client: CYPRUS CANADA INC.
C/O RUBICON MINERALS
119 53RD ST.
DELTA, BC
V4M 3B3

Project: BC302
Comments: ATTN: MICHAEL GRAY CC: STEVE PARRY

Page 1 of 1
Total Pages: 3
Certificate Date: 08-SEP-95
Invoice No.: I9526354
P.O. Number: 950804/805
Account: MUB

CERTIFICATE OF ANALYSIS A9526354

SAMPLE	PREP CODE		Au g/t	Ag	Al	As	Ba	Be	Bi	Ca	Cd	Co	Cr	Cu	Fe	Ga	Hg	K	La	Mg	Mn
			FA+AA	ppm	%	ppm	ppm	ppm	ppm	%	ppm	ppm	ppm	ppm	%	ppm	ppm	%	ppm	%	ppm
NBC 47701	205	226	0.020	0.2	0.33	72	40	< 0.5	< 2	6.10	< 0.5	8	60	22	4.39	< 10	< 1	0.09	< 10	3.21	790
NBC 47702	205	226	0.005	< 0.2	0.27	42	30	< 0.5	< 2	5.80	< 0.5	7	85	20	3.39	< 10	< 1	0.09	< 10	2.86	680
NBC 47703	205	226	0.045	0.4	0.15	156	40	< 0.5	< 2	7.93	0.5	18	30	35	13.40	< 10	2	0.03	< 10	2.88	1600
NBC 47704	205	226	0.005	< 0.2	1.03	22	100	< 0.5	< 2	3.69	0.5	10	45	8	3.69	< 10	< 1	0.16	< 10	1.36	755
NBC 47705	205	226	< 0.005	< 0.2	0.22	14	20	< 0.5	< 2	2.68	< 0.5	3	202	38	2.01	< 10	< 1	0.06	< 10	1.19	450
NBC 47706	205	226	< 0.005	< 0.2	1.85	< 2	190	< 0.5	< 2	2.42	< 0.5	12	31	13	3.03	< 10	< 1	0.19	10	0.74	905
NBC 47707	205	226	0.010	< 0.2	1.44	2	210	< 0.5	< 2	3.63	< 0.5	6	42	< 1	2.62	< 10	< 1	0.20	10	0.45	765
NBC 47709	205	226	< 0.005	0.2	0.53	< 2	160	< 0.5	< 2	3.05	10.5	8	47	16	3.27	< 10	2	0.14	< 10	0.63	1575
NBC 47710	205	226	0.010	0.4	0.46	< 2	240	< 0.5	< 2	3.84	2.5	5	38	15	3.03	< 10	< 1	0.13	< 10	0.27	1125
NBC 47711	205	226	0.085	2.8	0.82	40	110	< 0.5	< 2	3.57	0.5	5	49	19	3.78	< 10	< 1	0.09	< 10	0.63	1595
NBC 47712	205	226	< 0.005	1.4	0.32	20	90	< 0.5	< 2	8.30	5.0	3	46	120	3.46	< 10	1	0.04	< 10	2.26	3000
NBC 47713	205	226	< 0.005	0.4	0.49	4	240	< 0.5	< 2	0.60	1.0	6	31	23	4.08	< 10	< 1	0.11	< 10	0.07	1265
NBC 47714	205	226	< 0.005	0.8	0.67	6	310	< 0.5	< 2	8.06	2.0	5	33	119	3.55	< 10	< 1	0.05	< 10	1.09	2610
NBC 47715	205	226	< 0.040	0.8	0.66	10	240	< 0.5	< 2	0.33	1.0	4	18	27	3.90	< 10	< 1	0.11	< 10	0.15	675
NBC 47716	205	226	< 0.005	2.0	0.26	130	60	< 0.5	< 2	8.53	1.5	26	77	268	6.35	< 10	1	0.04	< 10	2.98	4470
NBC 47717	205	226	< 0.005	< 0.2	0.33	10	100	< 0.5	< 2	2.97	0.5	2	27	9	1.35	< 10	< 1	0.11	< 10	1.11	1490
NBC 47718	205	226	< 0.005	3.2	0.44	118	90	< 0.5	< 2	6.25	11.0	35	46	216	8.48	< 10	1	0.03	< 10	2.90	3680
NBC 47719	205	226	< 0.005	2.0	0.29	74	110	< 0.5	< 2	6.30	25.5	19	27	129	4.07	< 10	5	0.06	< 10	2.88	3620
NBC 47720	205	226	< 0.005	0.4	0.28	< 2	140	< 0.5	< 2	6.63	1.5	9	43	21	5.17	< 10	< 1	0.07	< 10	0.98	1240
NBC 47722	205	226	< 0.005	0.2	1.33	< 2	130	< 0.5	< 2	1.64	0.5	6	18	12	3.16	< 10	< 1	0.17	10	0.65	930
NBC 47723	205	226	0.090	0.2	1.38	< 2	520	< 0.5	< 2	0.28	0.5	10	26	26	3.68	< 10	< 1	0.18	< 10	0.33	810
NBC 47724	205	226	< 0.005	0.2	2.61	16	180	< 0.5	< 2	7.28	< 0.5	28	145	141	5.50	< 10	< 1	0.17	< 10	1.65	950
NBC 47725	205	226	0.015	1.0	0.55	22	160	< 0.5	< 2	0.15	< 0.5	4	37	22	1.94	< 10	< 1	0.24	20	0.05	85
NBC 47726	205	226	< 0.005	0.2	2.23	< 2	150	< 0.5	< 2	2.18	0.5	10	21	4	3.49	< 10	< 1	0.23	10	1.23	610
NBC 47727	205	226	< 0.005	0.2	1.22	< 2	100	< 0.5	< 2	4.00	0.5	9	26	73	4.36	< 10	< 1	0.16	< 10	1.68	785
NBC 47728	205	226	< 0.005	< 0.2	1.10	24	230	< 0.5	< 2	0.74	< 0.5	7	31	17	2.79	< 10	< 1	0.28	10	0.42	325
NBC 47729	205	226	< 0.005	0.2	0.18	32	100	< 0.5	< 2	1.24	1.0	8	82	31	1.62	< 10	< 1	0.08	< 10	0.16	510
NBC 47730	205	226	< 0.005	0.2	0.25	14	80	< 0.5	< 2	2.46	0.5	9	74	24	2.38	< 10	< 1	0.06	< 10	0.34	650
NBC 47731	205	226	< 0.005	0.6	0.30	34	120	< 0.5	< 2	1.31	1.5	8	76	57	1.78	< 10	< 1	0.15	10	0.44	630
NBC 47732	205	226	< 0.005	0.2	0.17	14	70	< 0.5	< 2	2.91	< 0.5	6	72	33	2.10	< 10	< 1	0.09	< 10	0.99	550
NBC 47733	205	226	< 0.005	0.4	0.53	76	150	< 0.5	< 2	6.13	0.5	27	34	128	5.05	< 10	< 1	0.16	< 10	1.24	1340
NBC 47735	205	226	< 0.005	0.2	0.47	58	210	< 0.5	< 2	2.10	< 0.5	9	22	45	3.13	< 10	< 1	0.21	10	0.31	770
NBC 47736	205	226	< 0.005	0.2	3.33	30	80	< 0.5	< 2	5.30	0.5	37	220	127	8.30	< 10	< 1	0.08	< 10	3.26	1020
NBC 47737	205	226	< 0.005	0.2	0.83	154	70	< 0.5	< 2	2.70	0.5	24	43	138	4.48	< 10	< 1	0.12	< 10	0.89	665
NBC 47738	205	226	0.025	0.6	0.33	62	100	< 0.5	< 2	9.47	33.0	32	18	140	6.00	< 10	2	0.04	< 10	2.49	2680
NBC 47739	205	226	< 0.005	0.2	1.85	8	100	< 0.5	< 2	0.68	< 0.5	11	12	20	3.55	< 10	< 1	0.18	10	1.16	350
NBC 47740	205	226	0.040	0.6	0.18	26	20	< 0.5	< 2	0.25	0.5	4	96	29	9.85	< 10	< 1	0.04	< 10	0.12	150
NBC 47741	205	226	< 0.005	0.2	0.54	14	100	< 0.5	< 2	3.83	< 0.5	15	18	47	4.27	< 10	< 1	0.18	< 10	1.09	920
NBC 47745	205	226	< 0.005	< 0.2	0.98	18	80	< 0.5	< 2	0.61	< 0.5	9	153	10	2.15	< 10	< 1	0.11	10	0.70	640
NBC 47746	205	226	< 0.005	< 0.2	1.93	< 2	80	< 0.5	< 2	0.11	< 0.5	8	118	16	3.54	< 10	< 1	0.12	10	1.23	175

CERTIFICATION: *John A. Bickler*



Chemex Labs Ltd.

Analytical Chemists * Geochemists * Registered Assayers
 212 Brooksbank Ave., North Vancouver
 British Columbia, Canada V7J 2C1
 PHONE: 604-984-0221 FAX: 604-984-0218

To: CYPRUS CANADA INC.
 C/O RUBICON MINERALS
 119 53RD ST.
 DELTA, BC
 V4M 3B3

Page Number : 1-B
 Total Pages : 3
 Certificate Date: 08-SEP-95
 Invoice No. : 19526354
 P.O. Number : 950804/806
 Account : MUB

Project : BC302
 Comments: ATTN: MICHAEL GRAY CC: STEVE PARRY

CERTIFICATE OF ANALYSIS A9526354

SAMPLE	PREP CODE		Mo	Na	Ni	P	Pb	Sb	Sc	Sr	Ti	Tl	U	V	W	Zn
			ppm	%	ppm	ppm	ppm	ppm	ppm	ppm	%	ppm	ppm	ppm	ppm	ppm
NBC 47701	205	226	< 1	0.03	43	610	20	14	6	688	< 0.01	< 10	< 10	15	< 10	52
NBC 47702	205	226	< 1	0.03	36	540	12	8	5	586	< 0.01	< 10	< 10	11	< 10	34
NBC 47703	205	226	< 1	0.01	40	300	30	36	6	319	< 0.01	< 10	< 10	15	< 10	22
NBC 47704	205	226	< 1	0.08	3	1140	8	4	4	162	< 0.01	< 10	< 10	19	< 10	116
NBC 47705	205	226	< 1	0.01	14	370	4	4	1	238	< 0.01	< 10	< 10	7	< 10	50
NBC 47706	205	226	< 1	0.03	3	1060	6	4	3	115	< 0.01	< 10	< 10	22	< 10	172
NBC 47707	205	226	< 1	0.08	< 1	1230	6	2	2	152	< 0.01	< 10	< 10	13	< 10	102
NBC 47709	205	226	< 1	0.08	2	1120	168	2	4	93	< 0.01	< 10	< 10	7	< 10	920
NBC 47710	205	226	< 1	0.06	3	970	46	2	3	3670	< 0.01	< 10	< 10	6	< 10	234
NBC 47711	205	226	< 1	0.06	1	960	98	4	5	147	< 0.01	< 10	< 10	11	< 10	116
NBC 47712	205	226	< 1	0.04	1	530	16	12	4	106	< 0.01	< 10	< 10	10	< 10	428
NBC 47713	205	226	< 1	0.05	3	1080	30	2	4	40	< 0.01	< 10	< 10	8	< 10	160
NBC 47714	205	226	< 1	0.07	1	790	30	6	5	125	< 0.01	< 10	< 10	14	< 10	248
NBC 47715	205	226	< 1	0.05	1	1030	48	2	3	28	< 0.01	< 10	< 10	12	< 10	200
NBC 47716	205	226	< 1	0.02	20	830	62	22	8	156	< 0.01	< 10	< 10	41	< 10	198
NBC 47717	205	226	< 1	0.03	9	530	14	4	3	72	< 0.01	< 10	< 10	14	< 10	98
NBC 47718	205	226	6	0.02	99	670	448	14	4	101	< 0.01	< 10	< 10	16	< 10	1205
NBC 47719	205	226	4	0.02	38	740	458	16	4	95	< 0.01	< 10	< 10	14	< 10	3330
NBC 47720	205	226	< 1	0.04	< 1	670	30	2	4	148	< 0.01	< 10	< 10	4	< 10	134
NBC 47722	205	226	1	0.04	1	1190	12	2	3	37	< 0.01	< 10	< 10	31	< 10	104
NBC 47723	205	226	2	0.06	2	1240	8	2	3	20	< 0.01	< 10	< 10	18	< 10	110
NBC 47724	205	226	< 1	0.01	36	1550	2	4	18	376	< 0.01	< 10	< 10	80	< 10	76
NBC 47725	205	226	1	0.06	12	1060	24	6	2	37	< 0.01	< 10	< 10	23	< 10	30
NBC 47726	205	226	< 1	0.03	7	1260	4	2	2	100	< 0.01	< 10	< 10	30	< 10	108
NBC 47727	205	226	< 1	0.02	29	1200	6	4	4	185	< 0.01	< 10	< 10	25	< 10	86
NBC 47728	205	226	< 1	0.04	12	1160	2	2	2	28	< 0.01	< 10	< 10	14	< 10	88
NBC 47729	205	226	6	< 0.01	13	410	10	4	3	30	< 0.01	< 10	< 10	8	< 10	88
NBC 47730	205	226	< 1	0.01	15	290	4	2	3	43	< 0.01	< 10	< 10	5	< 10	66
NBC 47731	205	226	11	0.01	40	460	12	4	2	51	< 0.01	< 10	< 10	13	< 10	158
NBC 47732	205	226	< 1	< 0.01	13	160	6	2	4	116	< 0.01	< 10	< 10	3	< 10	92
NBC 47733	205	226	2	0.06	31	1600	6	4	15	148	< 0.01	< 10	< 10	27	< 10	70
NBC 47735	205	226	< 1	0.02	4	500	4	2	7	61	< 0.01	< 10	< 10	6	< 10	48
NBC 47736	205	226	< 1	0.02	44	1370	12	4	30	455	< 0.01	< 10	< 10	206	< 10	106
NBC 47737	205	226	< 1	0.05	19	1870	20	4	16	172	< 0.01	< 10	< 10	74	< 10	68
NBC 47738	205	226	< 1	0.03	33	840	28	8	13	378	< 0.01	< 10	< 10	41	< 10	9740
NBC 47739	205	226	< 1	0.02	4	120	6	2	4	43	< 0.01	< 10	< 10	11	< 10	138
NBC 47740	205	226	45	< 0.01	24	40	26	6	2	10	< 0.01	< 10	< 10	< 1	< 10	106
NBC 47741	205	226	< 1	0.06	6	1440	8	2	12	106	< 0.01	< 10	< 10	17	< 10	50
NBC 47745	205	226	< 1	0.02	45	370	14	< 2	2	42	< 0.01	< 10	< 10	12	< 10	52
NBC 47746	205	226	1	0.02	64	540	6	2	2	15	< 0.01	< 10	< 10	24	< 10	78

CERTIFICATION: *Hart Bickler*



Chemex Labs Ltd.

Analytical Chemists * Geochemists * Registered Assayers

212 Brooksbank Ave., North Vancouver
British Columbia, Canada V7J 2C1
PHONE: 604-984-0221 FAX: 604-984-0218

to: CYPRUS CANADA INC.
C/O RUBICON MINERALS
119 53RD ST.
DELTA, BC
V4M 3B3

Project: BC302
Comments: ATTN: MICHAEL GRAY CC: STEVE PARRY

Page Number :2-A
Total Pages :3
Certificate Date: 08-SEP-95
Invoice No. : 19526354
P.O. Number : 950804/805
Account : MUB

CERTIFICATE OF ANALYSIS A9526354

SAMPLE	PREP CODE	Au g/t FA+AA	Ag ppm	Al %	As ppm	Ba ppm	Be ppm	Bi ppm	Ca %	Cd ppm	Co ppm	Cr ppm	Cu ppm	Fe %	Ga ppm	Hg ppm	K %	La ppm	Mg %	Mn ppm
NBC 47747	205 226	< 0.005	< 0.2	1.89	2	720	< 0.5	< 2	2.01	23.0	7	19	13	3.51	< 10	3	0.19	10	1.05	2390
NBC 47751	205 226	0.035	0.4	0.70	20	400	< 0.5	< 2	0.10	0.5	4	105	11	1.75	< 10	< 1	0.08	< 10	0.32	165
NBC 47752	205 226	< 0.005	< 0.2	0.76	20	80	< 0.5	< 2	0.13	< 0.5	6	151	9	1.77	< 10	< 1	0.11	< 10	0.40	320
NBC 47753	205 226	< 0.005	0.4	2.04	8	120	< 0.5	< 2	0.08	< 0.5	8	81	35	3.78	< 10	< 1	0.20	10	1.29	185
NBC 47754	205 226	< 0.005	< 0.2	0.72	24	90	< 0.5	< 2	0.47	< 0.5	3	27	6	1.28	< 10	< 1	0.29	20	0.17	295
NBC 47755	205 226	< 0.005	< 0.2	0.74	40	50	< 0.5	< 2	0.12	< 0.5	2	25	3	1.11	< 10	< 1	0.15	10	0.24	170
NBC 47758	205 226	< 0.005	0.4	2.66	< 2	60	< 0.5	< 2	0.23	< 0.5	12	109	27	4.96	< 10	< 1	0.11	20	1.57	400
NBC 47761	205 226	< 0.005	0.8	1.44	28	30	< 0.5	< 2	0.12	< 0.5	9	72	20	2.73	< 10	< 1	0.04	< 10	1.07	315
NBC 47764	205 226	< 0.005	< 0.2	0.54	< 2	10	< 0.5	< 2	0.62	< 0.5	3	116	5	0.99	< 10	< 1	0.03	< 10	0.33	430
NBC 47765	205 226	< 0.005	0.6	2.64	6	40	< 0.5	< 2	0.16	< 0.5	8	74	21	4.54	< 10	< 1	0.08	10	1.85	385
NBC 47766	205 226	0.015	0.4	0.64	10	40	< 0.5	< 2	0.04	< 0.5	4	136	10	1.18	< 10	< 1	0.06	< 10	0.41	225
NBC 47767	205 226	0.050	1.0	1.07	38	60	< 0.5	< 2	0.04	< 0.5	7	145	20	2.02	< 10	< 1	0.10	< 10	0.73	165
NBC 47769	205 226	< 0.005	< 0.2	0.27	4	30	< 0.5	< 2	1.49	< 0.5	1	109	4	0.87	< 10	< 1	0.13	10	0.07	210
NBC 47772	205 226	< 0.005	< 0.2	0.25	8	30	< 0.5	< 2	0.10	< 0.5	< 1	151	1	0.34	< 10	< 1	0.23	10	0.01	40
NBC 47774	205 226	0.025	0.6	1.35	86	100	< 0.5	< 2	0.07	< 0.5	9	104	23	3.99	< 10	< 1	0.20	< 10	0.70	55
NBC 47775	205 226	< 0.005	< 0.2	0.39	4	40	< 0.5	< 2	3.12	< 0.5	3	128	7	0.69	< 10	< 1	0.04	< 10	0.28	685
NBC 47776	205 226	< 0.005	< 0.2	1.72	8	80	< 0.5	< 2	3.91	< 0.5	10	115	30	2.61	< 10	< 1	0.15	< 10	1.13	770
NBC 47777	205 226	< 0.005	0.2	0.79	32	90	< 0.5	< 2	6.64	0.5	9	68	17	3.87	< 10	< 1	0.15	< 10	3.17	435
NBC 47778	205 226	< 0.005	< 0.2	0.42	2	60	< 0.5	< 2	2.05	< 0.5	5	109	18	1.48	< 10	< 1	0.09	< 10	0.83	860
NBC 47779	205 226	< 0.005	< 0.2	0.52	< 2	30	< 0.5	< 2	4.47	< 0.5	3	121	7	0.99	< 10	< 1	0.06	< 10	0.51	1225
NBC 47780	205 226	0.015	0.8	2.57	32	140	0.5	< 2	0.16	< 0.5	15	131	54	4.96	< 10	< 1	0.18	10	1.41	335
NBC 47781	205 226	< 0.005	< 0.2	0.32	14	50	< 0.5	< 2	2.35	< 0.5	6	142	11	1.96	< 10	< 1	0.08	< 10	0.79	880
NBC 47782	205 226	0.015	0.4	1.66	36	90	< 0.5	< 2	2.28	< 0.5	13	87	39	3.64	< 10	< 1	0.17	< 10	1.41	1090
NBC 47783	205 226	0.015	0.4	0.82	32	60	< 0.5	< 2	0.17	< 0.5	16	101	19	2.42	< 10	< 1	0.09	< 10	0.50	160
NBC 47787	205 226	< 0.005	0.2	0.67	20	130	0.5	< 2	3.71	< 0.5	28	20	94	6.70	< 10	< 1	0.28	< 10	1.77	1090
NBC 47788	205 226	< 0.005	0.6	0.27	12	230	< 0.5	< 2	14.20	< 0.5	12	7	218	3.44	< 10	< 1	0.10	< 10	4.57	2200
NBC 47789	205 226	0.060	< 0.2	1.97	2	60	< 0.5	< 2	5.42	< 0.5	28	148	82	5.21	< 10	< 1	0.07	< 10	3.16	995
NBC 47790	205 226	< 0.005	0.4	0.32	68	390	< 0.5	< 2	8.82	< 0.5	32	54	86	6.38	< 10	< 1	0.14	< 10	3.05	1565
NBC 47791	205 226	< 0.005	0.2	0.31	40	40	< 0.5	< 2	4.49	< 0.5	19	14	112	5.91	< 10	< 1	0.12	< 10	2.19	1025
NBC 47792	205 226	< 0.005	< 0.2	0.13	44	20	< 0.5	< 2	10.60	< 0.5	5	20	9	5.89	< 10	< 1	0.03	< 10	3.81	1515
NBC 47793	205 226	< 0.005	0.4	1.06	34	70	< 0.5	< 2	11.05	< 0.5	25	20	112	5.10	< 10	< 1	0.13	< 10	1.85	1145
NBC 47794	205 226	< 0.005	0.2	0.40	42	60	< 0.5	< 2	10.20	< 0.5	16	8	112	4.59	< 10	< 1	0.17	< 10	3.97	1535
NBC 47795	205 226	< 0.005	0.2	0.35	8	50	< 0.5	< 2	3.08	< 0.5	12	44	51	2.95	< 10	< 1	0.16	< 10	1.03	715
NBC 47796	205 226	< 0.005	< 0.2	1.53	4	280	< 0.5	< 2	2.93	< 0.5	9	32	6	2.79	< 10	< 1	0.17	10	0.71	635
NBC 47797	205 226	< 0.005	0.8	0.58	2	300	< 0.5	< 2	0.13	< 0.5	3	11	9	2.98	< 10	< 1	0.11	< 10	0.12	95
NBC 47798	205 226	< 0.005	0.6	0.58	4	200	< 0.5	< 2	1.06	< 0.5	7	38	10	3.55	< 10	< 1	0.18	< 10	0.04	1240
NBC 47799	205 226	< 0.005	0.4	0.60	< 2	110	< 0.5	< 2	0.66	3.0	5	40	8	4.08	< 10	< 1	0.19	10	0.13	775
NBC 47800	205 226	< 0.005	0.4	0.61	12	140	< 0.5	< 2	1.16	2.5	6	52	8	4.17	< 10	< 1	0.21	10	0.09	1150
NBC 47942	205 226	< 0.005	0.4	2.23	14	110	< 0.5	< 2	0.12	< 0.5	7	76	19	4.49	< 10	< 1	0.16	10	1.49	320
NBC 47943	205 226	< 0.005	0.2	0.82	4	280	< 0.5	< 2	0.87	< 0.5	3	43	2	1.24	< 10	< 1	0.41	30	0.26	320

CERTIFICATION:

Hart Buchler



Chemex Labs Ltd.

Analytical Chemists * Geochemists * Registered Assayers
 212 Brooksbank Ave., North Vancouver
 British Columbia, Canada V7J 2C1
 PHONE: 604-984-0221 FAX: 604-984-0218

CYPRUS CANADA INC.
 C/O RUBICON MINERALS
 119 53RD ST.
 DELTA, BC
 V4M 3B3

Total Pages: 3
 Certificate Date: 08-SEP-95
 Invoice No. : 19528354
 P.O. Number : 950804/805
 Account : MUB

Project : BC302
 Comments : ATTN: MICHAEL GRAY CC: STEVE PARRY

CERTIFICATE OF ANALYSIS A9526354

SAMPLE	PREP CODE		Mo	Na	Ni	P	Pb	Sb	Sc	Sr	Ti	Tl	U	V	W	Zn
			ppm	%	ppm	ppm	ppm	ppm	ppm	ppm	%	ppm	ppm	ppm	ppm	ppm
NBC 47747	205	226	< 1	0.03	2	1130	8	4	3	94	< 0.01	< 10	< 10	38	< 10	1980
NBC 47751	205	226	< 1	< 0.01	21	200	12	6	1	22	< 0.01	< 10	< 10	9	< 10	68
NBC 47752	205	226	< 1	0.01	36	260	8	2	1	14	< 0.01	< 10	< 10	12	< 10	40
NBC 47753	205	226	2	0.01	23	520	14	4	2	18	< 0.01	< 10	< 10	30	< 10	72
NBC 47754	205	226	< 1	0.03	2	610	14	< 2	1	28	< 0.01	< 10	< 10	8	< 10	56
NBC 47755	205	226	< 1	0.03	3	460	22	< 2	< 1	11	< 0.01	< 10	< 10	6	< 10	80
NBC 47758	205	226	1	0.01	80	1220	20	2	3	18	< 0.01	< 10	< 10	48	< 10	98
NBC 47761	205	226	< 1	0.01	24	570	6	4	2	8	< 0.01	< 10	< 10	34	< 10	48
NBC 47764	205	226	< 1	< 0.01	28	130	4	< 2	< 1	43	< 0.01	< 10	< 10	6	< 10	24
NBC 47765	205	226	1	0.01	43	880	6	4	3	11	< 0.01	< 10	< 10	51	< 10	88
NBC 47766	205	226	< 1	0.01	13	170	2	2	1	5	< 0.01	< 10	< 10	12	< 10	22
NBC 47767	205	226	1	0.01	23	290	2	4	1	18	< 0.01	< 10	< 10	21	< 10	38
NBC 47769	205	226	1	0.04	3	150	22	2	< 1	17	0.03	< 10	< 10	2	< 10	36
NBC 47772	205	226	< 1	0.02	3	40	10	< 2	< 1	6	< 0.01	< 10	< 10	1	< 10	4
NBC 47774	205	226	1	0.02	80	460	24	10	4	13	< 0.01	< 10	< 10	23	< 10	56
NBC 47775	205	226	< 1	< 0.01	13	150	2	2	3	585	< 0.01	< 10	< 10	6	< 10	18
NBC 47776	205	226	< 1	< 0.01	63	500	6	2	3	618	< 0.01	< 10	< 10	26	< 10	72
NBC 47777	205	226	< 1	0.01	56	330	16	6	4	1245	< 0.01	< 10	< 10	17	< 10	62
NBC 47778	205	226	< 1	0.01	23	400	2	2	2	326	< 0.01	< 10	< 10	9	< 10	34
NBC 47779	205	226	< 1	< 0.01	25	330	4	< 2	3	879	< 0.01	< 10	< 10	9	< 10	30
NBC 47780	205	226	1	0.01	101	670	16	6	4	25	< 0.01	< 10	< 10	42	< 10	122
NBC 47781	205	226	< 1	0.01	21	440	4	2	4	464	< 0.01	< 10	< 10	8	< 10	58
NBC 47782	205	226	1	0.01	58	730	12	6	3	351	< 0.01	< 10	< 10	29	< 10	100
NBC 47783	205	226	< 1	0.01	69	290	24	4	2	24	< 0.01	< 10	< 10	13	< 10	66
NBC 47787	205	226	< 1	0.05	62	5410	12	8	10	229	< 0.01	< 10	< 10	57	< 10	88
NBC 47788	205	226	< 1	0.03	10	420	16	4	7	651	< 0.01	< 10	< 10	17	< 10	28
NBC 47789	205	226	< 1	0.02	35	970	4	2	24	398	< 0.01	< 10	< 10	83	< 10	58
NBC 47790	205	226	< 1	0.03	39	1110	8	4	21	404	< 0.01	< 10	< 10	42	< 10	50
NBC 47791	205	226	< 1	0.01	19	1230	4	4	11	247	< 0.01	< 10	< 10	27	< 10	50
NBC 47792	205	226	< 1	0.01	50	310	8	4	3	282	< 0.01	< 10	< 10	19	< 10	12
NBC 47793	205	226	< 1	0.01	33	1190	8	6	12	372	< 0.01	< 10	< 10	38	< 10	52
NBC 47794	205	226	< 1	0.02	21	1710	8	4	10	622	< 0.01	< 10	< 10	22	< 10	18
NBC 47795	205	226	< 1	0.05	20	1180	12	8	5	145	< 0.01	< 10	< 10	17	< 10	60
NBC 47796	205	226	< 1	0.05	2	1010	8	4	3	101	< 0.01	< 10	< 10	19	< 10	94
NBC 47797	205	226	< 1	0.03	1	960	20	< 2	2	14	< 0.01	< 10	< 10	5	< 10	84
NBC 47798	205	226	< 1	0.06	2	1110	36	2	4	43	< 0.01	< 10	< 10	8	< 10	114
NBC 47799	205	226	< 1	0.06	1	1130	96	2	3	34	< 0.01	< 10	< 10	8	< 10	356
NBC 47800	205	226	< 1	0.06	2	1210	142	2	3	37	< 0.01	< 10	< 10	5	< 10	322
NBC 47942	205	226	2	0.03	18	860	12	2	4	15	< 0.01	< 10	< 10	57	< 10	84
NBC 47943	205	226	2	0.05	1	500	14	2	1	40	0.06	< 10	< 10	17	< 10	44

CERTIFICATION:

Hart Bickler



Chemex Labs Ltd.

Analytical Chemists * Geochemists * Registered Assayers

212 Brooksbank Ave., North Vancouver
British Columbia, Canada V7J 2C1
PHONE: 604-984-0221 FAX: 604-984-0218

to: CYPBUS CANADA INC.
C/O RUBICON MINERALS
119 53RD ST.
DELTA, BC
V4M 3B3

Page 1 of 3
Total Pages : 3
Certificate Date: 08-SEP-95
Invoice No. : 19526354
P.O. Number : 950804/805
Account : MUB

Project : BC302
Comments: ATTN: MICHAEL GRAY CC: STEVE PARRY

CERTIFICATE OF ANALYSIS A9526354

SAMPLE	PREP CODE	Au g/t FA+AA	Ag ppm	Al %	As ppm	Ba ppm	Be ppm	Bi ppm	Ca %	Cd ppm	Co ppm	Cr ppm	Cu ppm	Fe %	Ga ppm	Hg ppm	K %	La ppm	Mg %	Mn ppm
NBC 47944	205 226	< 0.005	< 0.2	0.88	12	140	< 0.5	< 2	0.30	< 0.5	3	42	2	1.28	< 10	< 1	0.37	20	0.20	295
NBC 47945	205 226	< 0.005	0.2	3.54	4	190	< 0.5	< 2	2.84	< 0.5	19	35	44	5.39	< 10	< 1	0.25	< 10	2.56	1020
NBC 47946	205 226	< 0.005	0.2	2.27	< 2	230	< 0.5	< 2	1.70	< 0.5	22	65	25	5.83	< 10	< 1	0.07	30	2.19	760
NBC 47947	205 226	< 0.005	0.2	0.73	14	160	< 0.5	< 2	2.84	0.5	9	25	34	3.17	< 10	< 1	0.32	10	0.53	890
NBC 47948	205 226	< 0.005	0.2	2.38	6	130	< 0.5	< 2	0.25	< 0.5	10	82	24	4.00	< 10	< 1	0.19	10	1.64	360
NBC 47949	205 226	< 0.005	0.2	1.74	22	110	< 0.5	< 2	0.14	< 0.5	10	87	32	4.46	< 10	< 1	0.18	10	1.15	168
NBC 47950	205 226	< 0.005	< 0.2	0.71	< 2	140	< 0.5	< 2	3.38	< 0.5	12	113	17	1.93	< 10	< 1	0.18	< 10	0.42	778

CERTIFICATION:

Hart Buchler



Chemex Labs Ltd.

Analytical Chemists * Geochemists * Registered Assayers

212 Brooksbank Ave., North Vancouver
British Columbia, Canada V7J 2G1
PHONE: 604-984-0221 FAX: 604-984-0218

To: CYPRIUS CANADA INC.
C/O RUBICON MINERALS
119 53RD ST.
DELTA, BC
V4M 3B3

Project: BC302
Comments: ATTN: MICHAEL GRAY CC: STEVE PARRY

Page 1 of 3
Total Pages: 3
Certificate Date: 08-SEP-95
Invoice No.: 19526354
P.O. Number: 950804/806
Account: MUB

CERTIFICATE OF ANALYSIS A9526354

SAMPLE	PREP CODE	Mo ppm	Na %	Ni ppm	P ppm	Pb ppm	Sb ppm	Sc ppm	Sr ppm	Ti %	Tl ppm	U ppm	V ppm	W ppm	Zn ppm
NBC 47944	205 226	< 1	0.04	1	670	16	2	1	21	< 0.01	< 10	< 10	12	< 10	84
NBC 47945	205 226	< 1	0.03	24	1460	6	6	8	143	< 0.01	< 10	< 10	83	< 10	86
NBC 47946	205 226	< 1	0.06	33	1140	4	4	6	100	0.49	< 10	< 10	108	< 10	104
NBC 47947	205 226	< 1	0.02	13	1400	14	2	3	158	0.01	< 10	< 10	18	< 10	120
NBC 47948	205 226	1	0.01	44	610	10	< 2	3	29	< 0.01	< 10	< 10	32	< 10	92
NBC 47949	205 226	1	0.02	62	460	10	6	3	21	< 0.01	< 10	< 10	27	< 10	92
NBC 47950	205 226	< 1	0.01	62	470	8	2	2	459	< 0.01	< 10	< 10	8	< 10	56

CERTIFICATION: *Haut Bichler*



Chemex Labs Ltd.

Analytical Chemists * Geochemists * Registered Assayers

212 Brooksbank Ave., North Vancouver
British Columbia, Canada V7J 2C1
PHONE: 604-984-0221 FAX: 604-984-0218

To: CYPRUS CANADA INC.
C/O RUBICON MINERALS
119 53RD ST.
DELTA, BC
V4M 3B3

Project: BC302
Comments: ATTN: STEVE PERRY

Page 1 of 1
Total Pages: 1
Certificate Date: 07-SEP-95
Invoice No.: 19526198
P.O. Number: 950802
Account: MUB

CERTIFICATE OF ANALYSIS A9526198

SAMPLE	PREP CODE	Au g/t FA+AA	Ag ppm	Al %	As ppm	Ba ppm	Be ppm	Bi ppm	Ca %	Cd ppm	Co ppm	Cr ppm	Cu ppm	Fe %	Ga ppm	Hg ppm	K %	La ppm	Mg %	Mn ppm
NBC47652	205 226	< 0.005	< 0.2	0.24	< 2	70	< 0.5	< 2	8.82	1.0	15	30	49	2.89	< 10	< 1	0.11	< 10	3.21	1428
NBC47653	205 226	< 0.005	< 0.2	0.11	< 2	80	< 0.5	< 2	13.35	1.0	17	25	16	4.28	< 10	< 1	0.04	< 10	4.91	2390
NBC47654	205 226	< 0.005	< 0.2	0.11	< 2	40	< 0.5	< 2	9.66	< 0.5	23	21	40	4.03	< 10	< 1	0.07	< 10	3.53	1560
NBC47655	205 226	< 0.005	< 0.2	0.50	< 2	40	< 0.5	< 2	6.02	0.5	8	8	52	3.81	< 10	< 1	0.06	< 10	1.91	1335
NBC47656	205 226	< 0.005	< 0.2	0.26	< 2	2080	< 0.5	< 2	9.33	1.0	14	10	6	5.25	< 10	< 1	0.06	< 10	4.01	2480
NBC47657	205 226	< 0.005	< 0.2	0.38	< 2	1060	< 0.5	2	4.56	< 0.5	13	12	68	3.35	< 10	< 1	0.12	< 10	1.85	1190
NBC47658	205 226	< 0.005	< 0.2	2.24	< 2	460	< 0.5	4	2.61	< 0.5	8	55	12	2.54	10	< 1	0.56	10	0.97	575
NBC47659	205 226	< 0.005	< 0.2	0.51	18	80	< 0.5	< 2	9.04	0.5	32	54	86	4.45	< 10	1	0.18	< 10	3.68	1220
NBC47662	205 226	< 0.005	0.8	0.43	14	60	< 0.5	2	2.00	5.0	12	13	26	3.99	< 10	< 1	0.10	< 10	0.55	2810
NBC47663	205 226	< 0.005	1.0	0.80	4	240	< 0.5	< 2	4.56	1.0	15	18	50	4.44	< 10	< 1	0.10	< 10	0.75	1830
NBC47664	205 226	< 0.005	3.6	0.21	60	30	< 0.5	< 2	0.40	9.5	10	12	101	7.97	< 10	< 1	0.13	< 10	0.43	2840
NBC47665	205 226	< 0.005	1.0	0.37	24	50	< 0.5	< 2	0.23	4.0	14	31	20	4.24	< 10	1	0.21	< 10	0.01	45
NBC47666	205 226	< 0.005	9.0	0.18	94	20	< 0.5	2	5.38	6.0	4	65	110	8.58	< 10	< 1	0.13	< 10	1.31	5580
NBC47670	205 226	< 0.005	0.2	0.57	< 2	720	< 0.5	< 2	8.93	0.5	12	54	52	5.23	< 10	< 1	0.17	20	0.99	2890
NBC47671	205 226	< 0.005	0.2	0.18	< 2	140	< 0.5	< 2	>15.00	< 0.5	4	8	4	1.52	< 10	< 1	0.03	< 10	0.29	2910
NBC47672	205 226	< 0.005	< 0.2	0.42	< 2	320	< 0.5	< 2	4.24	< 0.5	7	24	7	3.24	< 10	< 1	0.14	20	0.16	1315

CERTIFICATION: *Hank Buchler*



Chemex Labs Ltd.

Analytical Chemists * Geochemists * Registered Assayers

212 Brooksbank Ave., North Vancouver
British Columbia, Canada V7J 2C1
PHONE: 604-984-0221 FAX: 604-984-0218

Client: CYPRUS CANADA INC.
C/O RUBICON MINERALS
119 53RD ST.
DELTA, BC
V4M 3B3

Project: BC302
Comments: ATTN: STEVE PERRY

Page 1 of 1
Total Pages: 1
Certificate Date: 07-SEP-95
Invoice No.: 18526198
P.O. Number: 950802
Account: MUB

CERTIFICATE OF ANALYSIS

A9526198

SAMPLE	PREP CODE	Mo ppm	Na %	Ni ppm	P ppm	Pb ppm	Sb ppm	Sc ppm	Sr ppm	Ti %	Tl ppm	U ppm	V ppm	W ppm	Zn ppm
NBC47652	205 226	< 1	< 0.01	18	530	6	4	5	197	< 0.01	< 10	< 10	16	10	96
NBC47653	205 226	1	< 0.01	13	150	4	4	2	263	< 0.01	< 10	< 10	24	20	82
NBC47654	205 226	< 1	0.01	20	1170	4	6	13	154	< 0.01	< 10	< 10	27	10	44
NBC47655	205 226	< 1	0.02	2	1340	2	12	18	150	< 0.01	< 10	< 10	57	10	52
NBC47656	205 226	< 1	0.02	7	630	2	4	9	263	< 0.01	< 10	< 10	20	20	82
NBC47657	205 226	< 1	0.01	6	1100	4	8	7	526	< 0.01	< 10	< 10	19	< 10	60
NBC47658	205 226	< 1	0.13	3	940	< 2	6	3	115	< 0.01	< 10	< 10	33	< 10	80
NBC47659	205 226	< 1	0.01	27	1430	10	6	20	333	< 0.01	< 10	< 10	63	20	50
NBC47662	205 226	1	< 0.01	1	1310	102	8	2	45	< 0.01	< 10	< 10	8	< 10	400
NBC47663	205 226	1	< 0.01	2	1330	58	6	4	154	< 0.01	< 10	< 10	21	< 10	216
NBC47664	205 226	2	< 0.01	1	1010	156	12	3	13	< 0.01	< 10	< 10	12	< 10	1065
NBC47665	205 226	2	0.02	2	1060	48	6	1	14	< 0.01	< 10	< 10	6	< 10	382
NBC47666	205 226	< 1	< 0.01	< 1	610	1135	36	2	193	< 0.01	< 10	< 10	10	10	708
NBC47670	205 226	< 1	0.03	1	1290	18	8	15	224	< 0.01	< 10	< 10	37	10	104
NBC47671	205 226	< 1	< 0.01	< 1	70	30	4	2	899	< 0.01	< 10	< 10	15	20	54
NBC47672	205 226	< 1	0.08	< 1	1150	6	4	5	151	0.03	< 10	< 10	58	< 10	58

CERTIFICATION:

Handwritten signature



Chemex Labs Ltd.

Analytical Chemists * Geochemists * Registered Assayers

212 Brooksbank Ave., North Vancouver
 British Columbia, Canada V7J 2C1
 PHONE: 604-984-0221 FAX: 604-984-0218

CYPRUS CANADA INC.
 C/O RUBICON MINERALS
 119 53RD ST.
 DELTA, BC
 V4M 3B3

Project: BC302
 Comments: ATTN: GARFIELD MACVEIGH CC: STEVE PARRY

Page No. 1/1
 Total Pages 11
 Certificate Date: 18-SEP-98
 Invoice No.: 119527304
 P.O. Number:
 Account: MUB

CERTIFICATE OF ANALYSIS A9527304

SAMPLE	PREP CODE		Au g/t	Ag ppm	Al %	As ppm	Ba ppm	Be ppm	Bi ppm	Ca %	Cd ppm	Co ppm	Cr ppm	Cu ppm	Fe %	Ga ppm	Hg ppm	K %	La ppm	Mg %	Mn ppm
			FA+AA																		
NBC47622	205	226	< 0.005	< 0.2	0.38	4	220	< 0.5	< 2	2.12	< 0.5	4	36	26	0.48	< 10	< 1	0.26	< 10	0.32	300
NBC47623	205	226	0.070	< 0.2	1.14	4	140	< 0.5	< 2	9.67	< 0.5	17	67	7	4.93	< 10	< 1	0.55	< 10	1.88	2080
NBC47624	205	226	< 0.005	< 0.2	0.34	2	300	< 0.5	< 2	6.23	< 0.5	5	32	20	1.92	< 10	1	0.21	< 10	0.54	1435
NBC47625	205	226	< 0.020	< 0.2	1.34	2	210	< 0.5	< 2	4.87	< 0.5	9	61	9	3.10	< 10	< 1	0.49	< 10	0.99	880
NBC47626	205	226	< 0.005	0.6	0.33	6	370	< 0.5	< 2	10.75	< 0.5	14	47	190	3.73	< 10	< 1	0.20	< 10	1.62	2210
NBC47627	205	226	< 0.005	< 0.2	1.77	4	80	< 0.5	< 2	3.27	0.5	7	68	20	1.67	< 10	1	1.15	< 10	0.40	350
NBC47628	205	226	< 0.005	0.2	0.67	2	60	< 0.5	< 2	2.33	< 0.5	6	31	8	3.24	< 10	< 1	0.26	< 10	0.60	310
NBC47629	205	226	0.035	0.2	0.31	4	100	< 0.5	< 2	>15.00	0.5	2	97	4	1.22	< 10	< 1	0.17	< 10	0.75	1745
NBC47630	205	226	0.015	1.8	1.95	32	< 10	< 0.5	2	6.76	9.5	23	57	80	14.40	< 10	< 1	0.14	< 10	1.34	1095
NBC47631	205	226	< 0.005	0.2	0.37	2	440	< 0.5	< 2	6.85	1.5	1	32	88	0.71	< 10	1	0.24	< 10	0.21	895
NBC47632	205	226	< 0.005	< 0.2	0.51	2	190	< 0.5	< 2	3.84	< 0.5	2	17	9	2.31	< 10	< 1	0.18	< 10	0.53	1370
NBC47633	205	226	< 0.005	0.2	1.01	10	300	< 0.5	< 2	8.51	< 0.5	14	52	163	5.58	< 10	< 1	0.19	< 10	1.44	2970
NBC47634	205	226	0.010	< 0.2	0.09	4	1600	< 0.5	< 2	12.60	0.5	6	21	2	2.64	< 10	< 1	0.06	< 10	1.30	3070
NBC47635	205	226	0.060	0.4	1.09	6	< 10	< 0.5	< 2	0.24	0.5	14	97	42	5.56	< 10	< 1	0.41	< 10	0.44	100
NBC47636	205	226	0.025	2.4	1.06	96	90	< 0.5	< 2	0.85	>100.0	28	9	283	2.60	< 10	4	0.17	< 10	0.40	1230
NBC47637	205	226	1.010	2.6	1.20	260	20	< 0.5	< 2	2.87	97.0	41	22	184	5.12	< 10	1	0.20	< 10	0.45	2490
NBC47638	205	226	< 0.005	< 0.2	1.82	4	420	< 0.5	< 2	3.72	0.5	6	22	10	2.32	< 10	1	0.66	< 10	0.67	1685
NBC47639	205	226	0.080	13.8	1.66	180	10	< 0.5	< 2	2.43	>100.0	75	12	2040	4.41	< 10	86	0.11	< 10	0.79	5600
NBC47640	205	226	0.010	0.2	0.82	20	160	0.5	< 2	8.31	15.5	19	14	89	4.60	< 10	< 1	0.53	< 10	2.44	1455
NBC47641	205	226	< 0.005	0.2	0.81	38	280	0.5	< 2	11.50	< 0.5	28	80	67	3.30	< 10	< 1	0.62	< 10	1.49	1345
NBC47642	205	226	< 0.005	0.2	0.24	28	180	< 0.5	< 2	11.90	2.0	11	33	44	2.81	< 10	< 1	0.14	< 10	3.85	1400
NBC47643	205	226	< 0.005	< 0.2	0.05	16	20	< 0.5	< 2	>15.00	< 0.5	9	56	8	2.59	< 10	< 1	0.02	< 10	4.99	1975
NBC47644	205	226	< 0.005	< 0.2	0.64	14	100	< 0.5	< 2	10.20	< 0.5	16	74	61	4.44	< 10	< 1	0.30	< 10	3.22	1375
NBC47645	205	226	< 0.005	< 0.2	0.58	20	150	< 0.5	< 2	9.93	< 0.5	17	10	86	3.96	< 10	< 1	0.31	< 10	3.21	1665
NBC47646	205	226	< 0.005	< 0.2	2.11	12	60	< 0.5	< 2	5.27	< 0.5	25	28	148	5.44	< 10	< 1	0.08	< 10	2.09	990
NBC47647	205	226	< 0.005	0.2	0.15	22	70	0.5	< 2	>15.00	< 0.5	1	6	8	2.30	< 10	1	0.06	< 10	7.20	660
NBC47648	205	226	< 0.005	0.2	0.06	38	10	< 0.5	2	>15.00	< 0.5	1	14	2	3.51	< 10	1	0.01	< 10	6.78	700
NBC47649	205	226	< 0.005	< 0.2	1.48	16	50	< 0.5	< 2	5.93	< 0.5	24	27	89	6.19	< 10	< 1	0.11	< 10	2.28	1000
NBC47650	205	226	< 0.005	< 0.2	1.75	4	130	< 0.5	< 2	2.86	< 0.5	7	16	19	3.29	< 10	< 1	0.12	< 10	0.69	1015

CERTIFICATION:

Handwritten signature: Hans Bickler



Chemex Labs Ltd.

Analytical Chemists * Geochemists * Registered Assayers
 212 Brooksbank Ave., North Vancouver
 British Columbia, Canada V7J 2C1
 PHONE: 604-984-0221 FAX: 604-984-0218

To: CYPRUS CANADA INC.
 C/O RUBICON MINERALS
 119 53RD ST.
 DELTA, BC
 V4M 3B3

Page 1 of 1
 Total Pages 1
 Certificate Date: 18-SEP-95
 Invoice No.: 19527304
 P.O. Number:
 Account: MUB

Project: BC302
 Comments: ATTN: GARFIELD MACVEIGH CC:STEVE PARRY

CERTIFICATE OF ANALYSIS A9527304

SAMPLE	PREP CODE		Mo	Na	Ni	P	Pb	Sb	Sc	Sr	Ti	Tl	U	V	W	Zn
			ppm	%	ppm	ppm	ppm	ppm	ppm	ppm	%	ppm	ppm	ppm	ppm	ppm
NBC47622	205	226	< 1	0.03	1	1150	2	2	< 1	97	< 0.01	< 10	< 10	2	< 10	16
NBC47623	205	226	< 1	0.20	2	1280	4	< 2	10	277	< 0.01	< 10	< 10	31	< 10	162
NBC47624	205	226	< 1	0.03	1	900	4	< 2	1	159	< 0.01	< 10	< 10	5	< 10	80
NBC47625	205	226	< 1	0.29	1	1460	6	2	6	163	< 0.01	< 10	< 10	22	< 10	76
NBC47626	205	226	< 1	0.04	2	850	8	< 2	4	313	< 0.01	< 10	< 10	9	< 10	170
NBC47627	205	226	< 1	0.16	2	1140	8	2	1	197	< 0.01	< 10	< 10	16	< 10	42
NBC47628	205	226	2	0.06	2	1060	14	< 2	2	92	< 0.01	< 10	< 10	11	< 10	42
NBC47629	205	226	< 1	0.07	1	220	24	< 2	7	1430	< 0.01	< 10	< 10	6	< 10	34
NBC47630	205	226	< 1	0.07	3	2070	178	< 2	7	235	< 0.01	< 10	< 10	40	< 10	768
NBC47631	205	226	< 1	0.03	1	650	4	2	1	244	< 0.01	< 10	< 10	6	< 10	30
NBC47632	205	226	1	0.05	1	1050	2	< 2	3	74	< 0.01	< 10	< 10	12	< 10	70
NBC47633	205	226	10	0.07	2	690	6	4	4	164	< 0.01	< 10	< 10	21	< 10	184
NBC47634	205	226	< 1	0.01	1	420	10	< 2	1	297	< 0.01	< 10	< 10	6	< 10	174
NBC47635	205	226	3	0.02	2	830	42	< 2	4	15	< 0.01	< 10	< 10	17	< 10	78
NBC47636	205	226	6	< 0.01	5	1280	2370	4	1	73	< 0.01	< 10	< 10	15	< 10	>10000
NBC47637	205	226	3	0.01	6	1100	492	< 2	2	367	< 0.01	< 10	< 10	25	< 10	6730
NBC47638	205	226	< 1	0.07	< 1	970	12	< 2	2	98	< 0.01	< 10	< 10	29	< 10	226
NBC47639	205	226	1	< 0.01	8	750	>10000	12	4	106	< 0.01	< 10	< 10	37	850	>10000
NBC47640	205	226	1	0.03	40	3030	122	4	7	374	< 0.01	< 10	< 10	44	< 10	756
NBC47641	205	226	< 1	0.03	73	1430	6	2	14	430	< 0.01	< 10	< 10	39	< 10	40
NBC47642	205	226	< 1	0.08	13	470	24	< 2	11	257	< 0.01	< 10	< 10	33	< 10	122
NBC47643	205	226	< 1	0.02	6	190	2	2	9	402	< 0.01	< 10	< 10	23	< 10	34
NBC47644	205	226	< 1	0.02	17	590	2	< 2	14	478	< 0.01	< 10	< 10	35	< 10	26
NBC47645	205	226	< 1	0.04	5	1030	4	< 2	10	329	< 0.01	< 10	10	79	< 10	62
NBC47646	205	226	< 1	0.03	14	1500	6	< 2	12	304	< 0.01	< 10	< 10	109	< 10	66
NBC47647	205	226	< 1	0.02	7	160	2	2	< 1	695	< 0.01	< 10	10	10	< 10	18
NBC47648	205	226	1	0.01	22	110	4	4	1	859	< 0.01	< 10	< 10	15	< 10	22
NBC47649	205	226	< 1	0.02	95	3850	12	2	8	330	< 0.01	< 10	< 10	58	< 10	62
NBC47650	205	226	< 1	0.02	2	1360	6	< 2	4	66	< 0.01	< 10	< 10	33	< 10	88

CERTIFICATION: *Handwritten Signature*



Chemex Labs Ltd.

Analytical Chemists * Geochemists * Registered Assayers

212 Brooksbank Ave., North Vancouver
British Columbia, Canada V7J 2C1
PHONE: 604-984-0221 FAX: 604-984-0218

To: CYPRUS CANADA INC.
C/O RUBICON MINERALS
119 53RD ST.
DELTA, BC
V4M 3B3

Project: BC302
Comments: CC: STEVE PARRY

Page 1 of 1
Total Pages: 1
Certificate Date: 10-JUL-95
Invoice No.: 19520821
P.O. Number: 950601
Account: MUB

CERTIFICATE OF ANALYSIS A9520821

SAMPLE	PREP CODE	Au g/t FA+AA	Ag ppm	Al %	As ppm	Ba ppm	Be ppm	Bi ppm	Ca %	Cd ppm	Co ppm	Cr ppm	Cu ppm	Fe %	Ga ppm	Hg ppm	K %	La ppm	Mg %	Mn ppm
LH-00001	205 226	< 0.005	0.2	0.31	16	450	< 0.5	< 2	11.10	0.5	10	66	62	3.62	< 10	< 1	0.16	< 10	3.96	1635
LH-00002	205 226	< 0.005	< 0.2	1.73	84	130	< 0.5	< 2	4.14	< 0.5	37	114	63	6.80	10	< 1	0.45	< 10	4.01	585
LH-00003	205 226	< 0.005	< 0.2	1.41	4	40	< 0.5	< 2	3.68	< 0.5	16	48	109	4.31	10	< 1	0.04	< 10	2.11	995
LH-00004	205 226	< 0.005	< 0.2	2.20	< 2	270	< 0.5	< 2	0.34	< 0.5	8	10	28	2.71	10	< 1	0.49	20	1.32	225
LH-00005	205 226	< 0.005	< 0.2	0.97	8	220	< 0.5	< 2	2.50	< 0.5	9	13	11	3.24	10	< 1	0.29	10	0.24	805
LH-00006	205 226	< 0.005	15.8	0.04	306	< 10	< 0.5	< 2	0.03	13.5	1	108	27	13.70	< 10	8	0.03	< 10	0.01	10
LH-00007	205 226	< 0.005	59.8	0.16	336	90	< 0.5	< 2	0.27	5.0	12	292	690	1.77	10	8	0.01	< 10	0.03	50
LH-00008	205 226	< 0.005	46.6	0.18	616	< 10	< 0.5	< 2	0.23	86.5	22	401	137	>15.00	10	37	0.04	< 10	0.02	40
LH-00009	205 226	< 0.005	24.4	0.12	260	200	< 0.5	< 2	0.15	28.5	10	357	455	1.23	< 10	20	0.02	< 10	0.01	30
LH-00010	205 226	< 0.005	14.0	0.03	490	< 10	< 0.5	< 2	0.32	3.0	18	212	111	>15.00	10	6	0.01	< 10	0.01	45
LH-00011	205 226	< 0.005	10.4	0.08	378	10	< 0.5	< 2	0.10	2.0	12	344	114	6.89	< 10	< 1	0.01	< 10	0.01	30
LH-00012	205 226	< 0.005	0.2	1.16	8	130	< 0.5	< 2	13.45	1.0	16	23	51	6.15	< 10	< 1	0.20	< 10	5.38	3910
LH-00013	205 226	< 0.005	12.8	0.15	376	< 10	< 0.5	< 2	0.39	3.0	23	183	112	>15.00	10	4	0.07	< 10	0.02	40
LH-00014	205 226	< 0.005	9.8	0.34	366	10	< 0.5	< 2	0.29	61.5	43	253	66	6.58	10	37	0.02	< 10	0.12	155
LH-00015	205 226	< 0.005	< 0.2	0.96	2	150	< 0.5	< 2	5.38	< 0.5	9	24	5	3.27	< 10	1	0.23	10	1.85	2090
LH-00016	205 226	< 0.005	19.8	0.10	262	< 10	< 0.5	< 2	0.10	2.0	13	282	68	>15.00	10	< 1	0.01	< 10	0.03	60
LH-00017	205 226	< 0.005	< 0.2	1.22	< 2	130	< 0.5	< 2	4.08	0.5	9	24	6	3.16	< 10	< 1	0.20	< 10	1.39	1010
LH-00018	205 226	< 0.005	0.2	0.38	2	90	< 0.5	< 2	13.85	0.5	3	157	24	1.21	< 10	< 1	0.03	< 10	0.25	4230
LH-00019	205 226	< 0.005	< 0.2	1.34	6	110	< 0.5	< 2	3.34	< 0.5	11	30	13	2.27	< 10	< 1	0.49	< 10	0.36	480
LH-00020	205 226	< 0.005	12.8	0.07	92	10	< 0.5	< 2	0.25	0.5	6	204	60	8.32	< 10	1	0.01	< 10	< 0.01	70
LH-00021	205 226	< 0.005	0.2	2.02	18	60	< 0.5	< 2	0.21	12.5	36	56	151	6.10	10	1	0.41	< 10	0.62	80
LH-00022	205 226	< 0.005	< 0.2	2.19	4	20	< 0.5	< 2	0.16	< 0.5	11	51	27	5.90	10	< 1	0.31	< 10	0.58	160
PS-116	205 226	< 0.005	< 0.2	2.06	24	140	< 0.5	< 2	2.20	< 0.5	24	43	177	4.58	10	< 1	0.88	< 10	0.93	1045
PS-117	205 226	< 0.005	< 0.2	1.55	34	40	< 0.5	< 2	1.22	< 0.5	44	76	123	5.13	10	< 1	0.08	< 10	1.03	765
PS-118	205 226	< 0.005	< 0.2	0.91	86	140	< 0.5	< 2	7.77	0.5	18	19	139	5.13	10	< 1	0.27	< 10	1.31	1970
PS-119	205 226	< 0.005	0.2	0.92	8	120	< 0.5	< 2	0.04	< 0.5	8	99	34	2.05	< 10	< 1	0.44	< 10	0.04	90
PS-120	205 226	< 0.005	< 0.2	0.19	< 2	60	< 0.5	< 2	5.99	< 0.5	2	217	5	2.26	< 10	< 1	0.07	< 10	2.76	625
PS-121	205 226	< 0.005	< 0.2	1.14	148	160	< 0.5	< 2	1.74	< 0.5	55	88	164	9.71	10	< 1	0.48	< 10	2.95	615
PS-122	205 226	< 0.005	< 0.2	0.46	8	70	< 0.5	2	2.05	1.0	2	289	7	1.45	< 10	< 1	0.21	< 10	0.66	525
PS-123	205 226	< 0.005	< 0.2	0.26	16	50	< 0.5	< 2	7.79	< 0.5	2	191	15	4.11	< 10	< 1	0.11	< 10	3.08	1090
PS-124	205 226	< 0.005	0.8	0.55	108	110	< 0.5	< 2	0.07	0.5	2	168	21	2.74	< 10	< 1	0.27	< 10	0.03	130
PS-125	205 226	< 0.015	< 0.2	0.76	48	130	< 0.5	< 2	2.83	0.5	10	36	56	3.67	10	< 1	0.34	< 10	0.95	715
PS-126	205 226	< 0.005	< 0.2	0.13	14	20	< 0.5	< 2	6.46	< 0.5	2	222	7	2.55	< 10	1	0.05	< 10	2.96	680
PS-132	205 226	< 0.005	0.6	2.81	16	40	< 0.5	< 2	3.04	< 0.5	17	56	48	9.59	20	< 1	0.19	< 10	2.32	980
PS-133	205 226	0.320	0.6	0.38	14	110	< 0.5	< 2	1.62	< 0.5	3	284	136	2.55	< 10	< 1	0.19	< 10	0.82	300
PS-134	205 226	< 0.005	< 0.2	1.05	< 2	240	< 0.5	< 2	6.70	< 0.5	8	213	5	2.66	< 10	< 1	0.07	< 10	0.58	1285
PS-135	205 226	< 0.005	< 0.2	1.58	10	40	< 0.5	< 2	1.06	< 0.5	13	50	51	4.25	10	< 1	0.32	< 10	1.10	385
PS-136	205 226	0.055	0.2	0.84	< 2	100	< 0.5	< 2	3.41	< 0.5	18	53	7	4.40	< 10	< 1	0.25	< 10	1.08	500
PS-137	205 226	0.045	< 0.2	0.44	< 2	60	< 0.5	2	3.87	0.5	16	26	11	4.10	< 10	< 1	0.14	< 10	1.32	710

CERTIFICATION:

Hart Buchler



Chemex Labs Ltd.

Analytical Chemists • Geochemists • Registered Assayers
 212 Brooksbank Ave., North Vancouver
 British Columbia, Canada V7J 2C1
 PHONE: 604-984-0221 FAX: 604-984-0218

To: CYPRIUS CANADA INC
 C/O RUBICON MINERALS
 119 53RD ST.
 DELTA, BC
 V4M 3B3

Page 1 of 1
 Total Pages: 1
 Certificate Date: 10-JUL-95
 Invoice No.: 19520821
 P.O. Number: 9508011
 Account: MUB

Project: BC302
 Comments: CC: STEVE PARRY

CERTIFICATE OF ANALYSIS A9520821

SAMPLE	PREP CODE	Mo ppm	Na %	Ni ppm	P ppm	Pb ppm	Sb ppm	Sc ppm	Sr ppm	Ti %	Tl ppm	U ppm	V ppm	W ppm	Zn ppm
LH-00001	205 226	< 1	0.04	9	1390	2	10	16	811	< 0.01	< 10	< 10	49	20	44
LH-00002	205 226	< 1	0.03	51	710	2	12	24	257	< 0.01	< 10	< 10	89	20	90
LH-00003	205 226	< 1	0.09	4	2150	10	6	18	324	< 0.01	< 10	< 10	176	10	66
LH-00004	205 226	< 1	0.04	5	300	8	< 2	6	26	< 0.01	< 10	< 10	22	< 10	48
LH-00005	205 226	< 1	0.14	4	1020	8	4	6	85	< 0.01	< 10	< 10	22	< 10	106
LH-00006	205 226	4	< 0.01	1	100	2570	118	1	96	< 0.01	< 10	< 10	5	< 10	1645
LH-00007	205 226	12	0.01	8	980	4680	260	1	372	< 0.01	< 10	< 10	10	< 10	172
LH-00008	205 226	17	0.01	10	1270	>10000	224	3	230	< 0.01	< 10	< 10	11	< 10	9160
LH-00009	205 226	9	< 0.01	8	600	>10000	148	1	66	< 0.01	< 10	< 10	6	< 10	2400
LH-00010	205 226	13	< 0.01	8	1530	4500	38	1	107	< 0.01	< 10	< 10	7	< 10	44
LH-00011	205 226	7	< 0.01	11	410	4090	54	< 1	241	< 0.01	< 10	< 10	6	< 10	52
LH-00012	205 226	< 1	0.01	15	560	52	8	7	226	< 0.01	< 10	< 10	49	40	316
LH-00013	205 226	8	0.01	10	1850	5540	36	2	63	< 0.01	< 10	< 10	12	< 10	84
LH-00014	205 226	11	< 0.01	10	390	>10000	68	1	114	< 0.01	< 10	< 10	14	10	7790
LH-00015	205 226	< 1	0.05	2	1020	58	4	2	117	< 0.01	< 10	< 10	12	10	92
LH-00016	205 226	31	< 0.01	4	390	>10000	72	1	54	< 0.01	< 10	< 10	13	< 10	66
LH-00017	205 226	< 1	0.06	1	1300	40	2	3	149	< 0.01	< 10	< 10	28	10	90
LH-00018	205 226	< 1	0.02	2	30	32	2	2	564	< 0.01	< 10	< 10	7	10	40
LH-00019	205 226	1	0.03	2	1440	28	4	1	104	< 0.01	< 10	< 10	18	< 10	28
LH-00020	205 226	3	0.01	7	590	3660	28	1	185	< 0.01	< 10	< 10	7	< 10	14
LH-00021	205 226	2	0.03	19	1110	234	10	7	32	< 0.01	< 10	< 10	62	< 10	1005
LH-00022	205 226	< 1	0.10	5	880	44	8	6	49	< 0.01	< 10	< 10	51	< 10	228
PS-116	205 226	< 1	0.05	5	2920	12	12	14	160	< 0.01	< 10	< 10	173	10	56
PS-117	205 226	6	0.06	36	1390	22	8	14	64	< 0.01	< 10	< 10	191	< 10	70
PS-118	205 226	2	0.04	5	1680	36	16	10	518	< 0.01	< 10	< 10	99	10	46
PS-119	205 226	6	0.02	25	100	18	8	3	11	< 0.01	< 10	< 10	12	< 10	6
PS-120	205 226	< 1	0.02	15	400	2	4	2	530	< 0.01	< 10	< 10	12	10	14
PS-121	205 226	< 1	0.07	62	1640	4	18	23	150	< 0.01	< 10	< 10	100	10	168
PS-122	205 226	22	0.02	6	290	4	4	4	138	< 0.01	< 10	< 10	14	< 10	68
PS-123	205 226	< 1	0.02	13	310	< 2	14	2	733	< 0.01	< 10	< 10	18	10	22
PS-124	205 226	3	0.03	6	770	10	16	4	12	< 0.01	< 10	< 10	18	< 10	108
PS-125	205 226	< 1	0.06	21	1310	6	20	5	106	< 0.01	< 10	< 10	27	< 10	32
PS-126	205 226	< 1	0.02	19	210	4	8	1	745	< 0.01	< 10	< 10	11	10	14
PS-132	205 226	< 1	0.06	1	1140	36	14	5	119	< 0.01	< 10	< 10	61	20	266
PS-133	205 226	1	0.03	5	410	114	54	2	56	< 0.01	< 10	< 10	9	< 10	54
PS-134	205 226	< 1	0.02	2	340	8	6	2	287	< 0.01	< 10	< 10	19	< 10	78
PS-135	205 226	< 1	0.09	1	1300	14	6	2	66	< 0.01	< 10	< 10	36	< 10	78
PS-136	205 226	< 1	0.09	5	1360	14	40	7	121	< 0.01	< 10	< 10	24	< 10	64
PS-137	205 226	1	0.05	2	1660	4	8	6	99	< 0.01	< 10	< 10	16	10	72

CERTIFICATION: *Hart Bickler*



Chemex Labs Ltd.

Analytical Chemists * Geochemists * Registered Assayers

212 Brooksbank Ave., North Vancouver
 British Columbia, Canada V7J 2C1
 PHONE: 604-984-0221 FAX: 604-984-0218

To: CYPRUS CANADA INC.
 C/O RUBICON MINERALS
 119 53RD ST.
 DELTA, BC
 V4M 3B3

Project: BC302
 Comments: CC: STEVE PARRY

Page Number 11-A
 Total Pages 11
 Certificate Date: 10-JUL-95
 Invoice No. 19520821
 P.O. Number 950801
 Account MUB

CERTIFICATE OF ANALYSIS A9520821

SAMPLE	PREP CODE	Au g/t FA+AA	Ag ppm	Al %	As ppm	Ba ppm	Be ppm	Bi ppm	Ca %	Cd ppm	Co ppm	Cr ppm	Cu ppm	Fe %	Ga ppm	Hg ppm	K %	La ppm	Mg %	Mn ppm
LH-00001	205 226	< 0.005	0.2	0.31	16	450	< 0.5	< 2	11.10	0.5	10	66	62	3.62	< 10	< 1	0.16	< 10	3.96	1635
LH-00002	205 226	< 0.005	< 0.2	1.73	84	130	< 0.5	< 2	4.14	< 0.5	37	114	63	6.80	10	< 1	0.45	< 10	4.01	585
LH-00003	205 226	< 0.005	< 0.2	1.41	4	40	< 0.5	< 2	3.68	< 0.5	16	48	109	4.31	10	< 1	0.04	< 10	2.11	995
LH-00004	205 226	< 0.005	< 0.2	2.20	< 2	270	< 0.5	< 2	0.34	< 0.5	8	10	28	2.71	10	< 1	0.49	20	1.32	225
LH-00005	205 226	< 0.005	< 0.2	0.97	8	220	< 0.5	< 2	2.50	< 0.5	9	13	11	3.24	10	< 1	0.29	10	0.24	805
LH-00006	205 226	< 0.005	15.8	0.04	306	< 10	< 0.5	< 2	0.03	13.5	1	108	27	13.70	< 10	8	0.03	< 10	0.01	10
LH-00007	205 226	< 0.005	59.8	0.16	336	90	< 0.5	< 2	0.27	5.0	12	292	690	1.77	10	8	0.01	< 10	0.03	50
LH-00008	205 226	< 0.005	46.6	0.18	616	< 10	< 0.5	< 2	0.23	86.5	22	401	137	>15.00	10	37	0.04	< 10	0.02	40
LH-00009	205 226	< 0.005	24.4	0.12	260	200	< 0.5	< 2	0.15	28.5	10	357	455	1.23	< 10	20	0.02	< 10	0.01	30
LH-00010	205 226	< 0.005	14.0	0.03	490	< 10	< 0.5	< 2	0.32	3.0	18	212	111	>15.00	10	6	0.01	< 10	0.01	45
LH-00011	205 226	< 0.005	10.4	0.08	378	10	< 0.5	< 2	0.10	2.0	12	344	114	6.89	< 10	< 1	0.01	< 10	0.01	30
LH-00012	205 226	< 0.005	0.2	1.16	8	130	< 0.5	< 2	13.45	1.0	16	23	51	6.15	< 10	< 1	0.20	< 10	5.38	3910
LH-00013	205 226	< 0.005	12.8	0.15	376	< 10	< 0.5	< 2	0.39	3.0	23	183	112	>15.00	10	4	0.07	< 10	0.02	40
LH-00014	205 226	< 0.005	9.8	0.34	366	10	< 0.5	< 2	0.29	61.5	43	253	66	6.58	10	37	0.02	< 10	0.12	155
LH-00015	205 226	< 0.005	< 0.2	0.96	2	150	< 0.5	< 2	5.38	< 0.5	9	24	5	3.27	< 10	1	0.23	10	1.85	2090
LH-00016	205 226	< 0.005	19.8	0.10	262	< 10	< 0.5	< 2	0.10	2.0	13	282	68	>15.00	10	< 1	0.01	< 10	0.03	60
LH-00017	205 226	< 0.005	< 0.2	1.22	< 2	130	< 0.5	< 2	4.08	0.5	9	24	6	3.16	< 10	< 1	0.20	< 10	1.39	1010
LH-00018	205 226	< 0.005	0.2	0.38	2	90	< 0.5	< 2	13.85	0.5	3	157	24	1.21	< 10	< 1	0.03	< 10	0.25	4230
LH-00019	205 226	< 0.005	< 0.2	1.34	6	110	< 0.5	< 2	3.34	< 0.5	11	30	13	2.27	< 10	< 1	0.49	< 10	0.36	480
LH-00020	205 226	< 0.005	12.8	0.07	92	10	< 0.5	< 2	0.25	0.5	6	204	60	8.32	< 10	1	0.01	< 10	< 0.01	70
LH-00021	205 226	< 0.005	0.2	2.02	18	60	< 0.5	< 2	0.21	12.5	36	56	151	6.10	10	1	0.41	< 10	0.62	80
LH-00022	205 226	< 0.005	< 0.2	2.19	4	20	< 0.5	< 2	0.16	< 0.5	11	51	27	5.90	10	< 1	0.31	< 10	0.58	160
PS-116	205 226	< 0.005	< 0.2	2.06	24	140	< 0.5	< 2	2.20	< 0.5	24	43	177	4.58	10	< 1	0.88	< 10	0.93	1045
PS-117	205 226	< 0.005	< 0.2	1.55	34	40	< 0.5	< 2	1.22	< 0.5	44	76	123	5.13	10	< 1	0.08	< 10	1.03	765
PS-118	205 226	< 0.005	< 0.2	0.91	86	140	< 0.5	< 2	7.77	0.5	18	19	139	5.13	10	< 1	0.27	< 10	1.31	1970
PS-119	205 226	< 0.005	0.2	0.92	8	120	< 0.5	< 2	0.04	< 0.5	8	99	34	2.05	< 10	< 1	0.44	< 10	0.04	90
PS-120	205 226	< 0.005	< 0.2	0.19	< 2	60	< 0.5	< 2	5.99	< 0.5	2	217	5	2.26	< 10	< 1	0.07	< 10	2.76	625
PS-121	205 226	< 0.005	< 0.2	1.14	148	160	< 0.5	< 2	1.74	< 0.5	55	88	164	9.71	10	< 1	0.48	< 10	2.95	615
PS-122	205 226	< 0.005	< 0.2	0.46	8	70	< 0.5	2	2.05	1.0	2	289	7	1.45	< 10	< 1	0.21	< 10	0.66	525
PS-123	205 226	< 0.005	< 0.2	0.26	16	50	< 0.5	< 2	7.79	< 0.5	2	191	15	4.11	< 10	< 1	0.11	< 10	3.08	1090
PS-124	205 226	< 0.005	0.8	0.55	108	110	< 0.5	< 2	0.07	0.5	2	168	21	2.74	< 10	< 1	0.27	< 10	0.03	130
PS-125	205 226	0.015	< 0.2	0.76	48	130	< 0.5	< 2	2.83	0.5	10	36	56	3.67	10	< 1	0.34	< 10	0.95	715
PS-126	205 226	< 0.005	< 0.2	0.13	14	20	< 0.5	< 2	6.46	< 0.5	2	222	7	2.55	< 10	1	0.05	< 10	2.96	680
PS-132	205 226	< 0.005	0.6	2.81	16	40	< 0.5	< 2	3.04	< 0.5	17	56	48	9.59	20	< 1	0.19	< 10	2.32	980
PS-133	205 226	0.320	0.6	0.38	14	110	< 0.5	< 2	1.62	< 0.5	3	284	136	2.55	< 10	< 1	0.19	< 10	0.52	300
PS-134	205 226	< 0.005	< 0.2	1.05	< 2	240	< 0.5	< 2	6.70	< 0.5	8	213	5	2.66	< 10	< 1	0.07	< 10	0.58	1285
PS-135	205 226	< 0.005	< 0.2	1.58	10	40	< 0.5	< 2	1.06	< 0.5	13	50	51	4.25	10	< 1	0.32	< 10	1.10	385
PS-136	205 226	0.055	0.2	0.84	< 2	100	< 0.5	< 2	3.41	< 0.5	18	53	7	4.40	< 10	< 1	0.25	< 10	1.08	500
PS-137	205 226	0.045	< 0.2	0.44	< 2	60	< 0.5	2	3.87	0.5	16	26	11	4.10	< 10	< 1	0.14	< 10	1.32	710

CERTIFICATION:

Hart Bickler



Chemex Labs Ltd.

Analytical Chemists * Geochemists * Registered Assayers

212 Brooksbank Ave., North Vancouver
British Columbia, Canada V7J 2C1
PHONE: 604-984-0221 FAX: 604-984-0218

To: CYPRUS CANADA INC.
C/O RUBICON MINERALS
119 53RD ST.
DELTA, BC
V4M 3B3

Project: BC302
Comments: CC: STEVE PARRY

Page Number : 1-B
Total Pages : 1
Certificate Date: 10-JUL-95
Invoice No. : 19520821
P.O. Number : 950801
Account : MUB

CERTIFICATE OF ANALYSIS A9520821

SAMPLE	PREP CODE	Mo ppm	Na %	Ni ppm	P ppm	Pb ppm	Sb ppm	Se ppm	Sr ppm	Ti %	Tl ppm	U ppm	V ppm	W ppm	Zn ppm
LH-00001	205 226	< 1	0.04	9	1390	2	10	16	811	< 0.01	< 10	< 10	49	20	44
LH-00002	205 226	< 1	0.03	51	710	2	12	24	257	< 0.01	< 10	< 10	89	20	90
LH-00003	205 226	< 1	0.09	4	2150	10	6	18	324	< 0.01	< 10	< 10	176	10	66
LH-00004	205 226	< 1	0.04	5	300	8	< 2	6	26	< 0.01	< 10	< 10	22	< 10	48
LH-00005	205 226	< 1	0.14	4	1020	8	4	6	85	< 0.01	< 10	< 10	22	< 10	106
LH-00006	205 226	4	< 0.01	1	100	2570	118	1	96	< 0.01	< 10	< 10	5	< 10	1645
LH-00007	205 226	12	0.01	8	980	4680	260	1	372	< 0.01	< 10	< 10	10	< 10	172
LH-00008	205 226	17	0.01	10	1270	>10000	224	3	230	< 0.01	< 10	< 10	11	< 10	9160
LH-00009	205 226	9	< 0.01	8	600	>10000	148	1	66	< 0.01	< 10	< 10	6	< 10	2400
LH-00010	205 226	13	< 0.01	8	1530	4500	38	1	107	< 0.01	< 10	< 10	7	< 10	44
LH-00011	205 226	7	< 0.01	11	410	4090	54	< 1	241	< 0.01	< 10	< 10	6	< 10	52
LH-00012	205 226	< 1	0.01	15	560	52	8	7	226	< 0.01	< 10	< 10	49	40	316
LH-00013	205 226	8	0.01	10	1850	5540	36	2	63	< 0.01	< 10	< 10	12	< 10	84
LH-00014	205 226	11	< 0.01	10	390	>10000	68	1	114	< 0.01	< 10	< 10	14	10	7790
LH-00015	205 226	< 1	0.05	2	1020	58	4	2	117	< 0.01	< 10	< 10	12	10	92
LH-00016	205 226	31	< 0.01	4	390	>10000	72	1	54	< 0.01	< 10	< 10	13	< 10	66
LH-00017	205 226	< 1	0.06	1	1300	40	2	3	149	< 0.01	< 10	< 10	28	10	90
LH-00018	205 226	< 1	0.02	2	30	32	2	2	564	< 0.01	< 10	< 10	7	10	40
LH-00019	205 226	1	0.03	2	1440	28	4	1	104	< 0.01	< 10	< 10	18	< 10	28
LH-00020	205 226	3	0.01	7	590	3660	28	1	185	< 0.01	< 10	< 10	7	< 10	14
LH-00021	205 226	2	0.03	19	1110	234	10	7	32	< 0.01	< 10	< 10	62	< 10	1005
LH-00022	205 226	< 1	0.10	5	880	44	8	6	49	< 0.01	< 10	< 10	51	< 10	228
PS-116	205 226	< 1	0.05	5	2920	12	12	14	160	< 0.01	< 10	< 10	173	10	56
PS-117	205 226	6	0.06	36	1390	22	8	14	64	< 0.01	< 10	< 10	191	< 10	70
PS-118	205 226	2	0.04	5	1680	36	16	10	518	< 0.01	< 10	< 10	99	10	46
PS-119	205 226	6	0.02	25	100	18	8	3	11	< 0.01	< 10	< 10	12	< 10	6
PS-120	205 226	< 1	0.02	15	400	2	4	2	530	< 0.01	< 10	< 10	12	10	14
PS-121	205 226	< 1	0.07	62	1640	4	18	23	150	< 0.01	< 10	< 10	100	10	168
PS-122	205 226	22	0.02	6	290	4	4	4	138	< 0.01	< 10	< 10	14	< 10	68
PS-123	205 226	< 1	0.02	13	310	< 2	14	2	733	< 0.01	< 10	< 10	18	10	22
PS-124	205 226	3	0.03	6	770	10	16	4	12	< 0.01	< 10	< 10	18	< 10	108
PS-125	205 226	< 1	0.06	21	1310	6	20	5	106	< 0.01	< 10	< 10	27	< 10	32
PS-126	205 226	< 1	0.02	19	210	4	8	1	745	< 0.01	< 10	< 10	11	10	14
PS-132	205 226	< 1	0.06	1	1140	36	14	5	119	< 0.01	< 10	< 10	61	20	266
PS-133	205 226	1	0.03	5	410	114	54	2	56	< 0.01	< 10	< 10	9	< 10	54
PS-134	205 226	< 1	0.02	2	340	8	6	2	287	< 0.01	< 10	< 10	19	< 10	78
PS-135	205 226	< 1	0.09	1	1300	14	6	2	66	< 0.01	< 10	< 10	36	< 10	78
PS-136	205 226	< 1	0.09	5	1360	14	40	7	121	< 0.01	< 10	< 10	24	< 10	64
PS-137	205 226	1	0.05	2	1660	4	8	6	99	< 0.01	< 10	< 10	16	10	72

CERTIFICATION:

David Bickler

Appendix III
XRF Whole Rock Lithochem Results



Chemex Labs Ltd.

Analytical Chemists * Geochemists * Registered Assayers

212 Brooksbank Ave., North Vancouver
British Columbia, Canada V7J 2C1
PHONE: 604-984-0221 FAX: 604-984-0218

CYPRUS CANADA INC.
C/O RUBICON MINERALS
119 53RD ST.
DELTA, BC
V4M 3B3

A9528708

Comments: CC:STEVE PARRY

CERTIFICATE

A9528708

(MUB) - CYPRUS CANADA INC.

Project: BC302
P.O. #: 950804/805

Samples submitted to our lab in Vancouver, BC.
This report was printed on 26-SEP-95.

LAHTE

SAMPLE PREPARATION

CHEMEX CODE	NUMBER SAMPLES	DESCRIPTION
244	4	Pulp; prev. prepared at Chemex
200	4	Whole rock fusion

ANALYTICAL PROCEDURES

CHEMEX CODE	NUMBER SAMPLES	DESCRIPTION	METHOD	DETECTION LIMIT	UPPER LIMIT
594	4	Al2O3 %; Whole rock	ICP-AES	0.01	100.00
588	4	CaO %; Whole rock	ICP-AES	0.01	100.00
590	4	Cr2O3 %; Whole Rock	ICP-AES	0.01	100.00
586	4	Fe2O3(total) %; Whole rock	ICP-AES	0.01	100.00
821	4	K2O %; Whole rock	ICP-AES	0.01	100.00
593	4	MgO %; Whole rock	ICP-AES	0.01	100.00
596	4	MnO %; Whole rock	ICP-AES	0.01	100.00
599	4	Na2O %; Whole rock	ICP-AES	0.01	100.00
597	4	P2O5 %; Whole rock	ICP-AES	0.01	100.00
592	4	SiO2 %; Whole rock	ICP-AES	0.01	100.00
595	4	TiO2 %; Whole rock	ICP-AES	0.01	100.00
475	4	L.O.I. %; Loss on ignition	FURNACE	0.01	99.99
540	4	Total %	CALCULATION	0.01	105.00



Chemex Labs Ltd.

Analytical Chemists * Geochemists * Registered Assayers
212 Brooksbank Ave., North Vancouver
British Columbia, Canada V7J 2C1
PHONE: 604-984-0221 FAX: 604-984-0218

To: CYPRUS CANADA INC.
C/O RUBICON MINERALS
119 53RD ST.
DELTA, BC
V4M 3B3

Project: BC302
Comments: CC:STEVE PARRY

Page Number : 1
Total Pages : 1
Certificate Date: 28-SEP-95
Invoice No. : 19528708
P.O. Number : 950804/805
Account : MUB

* PLEASE NOTE

CERTIFICATE OF ANALYSIS A9528708

SAMPLE	PREP CODE	Al2O3 %	CaO %	Cr2O3 %	Fe2O3 %	K2O %	MgO %	MnO %	Na2O %	P2O5 %	SiO2 %	TiO2 %	LOI %	TOTAL %
NBC-47716	244 200	5.48	15.41	< 0.01	11.32	0.79	6.06	0.81	0.40	0.20	34.74	0.20	14.40	89.81
NBC-47718	244 200	6.30	12.21	< 0.01	15.67	0.78	6.06	0.69	0.44	0.17	33.25	0.20	16.95	92.72
NBC-47720	244 200	11.61	10.54	< 0.01	9.07	1.33	1.94	0.20	1.20	0.15	50.69	0.27	10.80	97.80
NBC-47738	244 200	8.52	14.98	0.03	10.31	0.87	4.70	0.44	3.84	0.24	31.98	0.34	18.60	94.85

CERTIFICATION: *Wai D. Ma*



Chemex Labs Ltd.

Analytical Chemists * Geochemists * Registered Assayers

212 Brooksbank Ave., North Vancouver
British Columbia, Canada V7J 2C1
PHONE: 604-984-0221 FAX: 604-984-0218

To: CYPRUS CANADA INC.
C/O RUBICON MINERALS
119 53RD ST.
DELTA, BC
V4M 3B3

Project: BC302
Comments: CC: STEVE PARRY

Page Number : 1
Total Pages : 1
Certificate Date: 10-JUL-95
Invoice No. : 19520822
P.O. Number : 950801
Account : MUB

CERTIFICATE OF ANALYSIS

A9520822

SAMPLE	PREP CODE	Al2O3 %	CaO %	Cr2O3 %	Fe2O3 %	K2O %	MgO %	MnO %	Na2O %	P2O5 %	SiO2 %	TiO2 %	LOI %	TOTAL %	Ba ppm	Rb ppm	Sr ppm	Nb ppm	Zr ppm	Y ppm
		XRF	XRF	XRF	XRF	XRF	XRF	XRF	XRF	XRF	XRF	XRF	XRF	XRF	%					
LH-00004	299 --	18.09	0.55	< 0.01	4.64	2.98	2.96	0.02	4.11	0.09	62.54	0.69	2.78	99.45	1480	100	150	10	240	50
LH-00005	299 --	18.05	3.70	< 0.01	5.24	1.76	0.64	0.11	4.40	0.26	61.65	0.69	3.58	100.08	1220	30	640	10	130	10

CERTIFICATION:

Hart Bickler

A9520822 - CERTIFIED																			
CLIENT : CYPRUS CANADA INC.																			
# of SAMPLES : 2																			
DATE RECEIVED : 28-JUN-95																			
PROJECT : BC302																			
CERTIFICATE COMMENTS : CC: STEVE PARRY																			
SAMPLE	902	908	2590	903	908	905	1989	907	909	901	904	910	2540	4076	4077	4078	4079	4080	4081
DESCRIP	Al ₂ O ₃ %	CaO %	Cr ₂ O ₃ %	Fe ₂ O ₃ %	K ₂ O %	MgO %	MnO %	Na ₂ O %	P ₂ O ₅ %	SiO ₂ %	TiO ₂ %	LOI %	TOTAL %	Ba ppm	Rb ppm	Sr ppm	Nb ppm	Zr ppm	Y ppm
LH-00004	18.09	0.55	<.01	4.64	2.98	2.96	0.02	4.11	0.09	62.54	0.69	2.78	99.45	1480	100	150	10	240	50
LH-00005	18.05	3.7	<.01	5.24	1.76	0.64	0.11	4.4	0.26	61.65	0.69	3.58	100.08	1220	30	640	10	130	10



Chemex Labs Ltd.

Analytical Chemists * Geochemists * Registered Assayers

212 Brooksbank Ave., North Vancouver
British Columbia, Canada V7J 2C1
PHONE: 604-984-0221 FAX: 604-984-0218

o: CYPRUS CANADA INC.
C/O RUBICON MINERALS
119 53RD ST.
DELTA, BC
V4M 3B3

Project : BC302
Comments: CC: STEVE PERRY

Page 1 of 1
Total Pages : 1
Certificate Date: 05-SEP-95
Invoice No. : 19526199
P.O. Number : 950802
Account : MUB.

CERTIFICATE OF ANALYSIS

A9526199

SAMPLE	PREP CODE	Al2O3 %	CaO %	Cr2O3 %	Fe2O3 %	K2O %	MgO %	MnO %	Na2O %	P2O5 %	SiO2 %	TiO2 %	LOI %	TOTAL %	Ba ppm	Rb ppm	Sr ppm	Nb ppm	Zr ppm	Y ppm
		XRF	XRF	XRF	XRF	XRF	XRF	XRF	XRF	XRF	XRF	XRF	XRF	XRF	%					
NBC47658	299 --	16.77	3.83	0.03	4.60	2.51	1.85	0.08	4.16	0.22	59.33	0.56	5.40	99.34	1540	50	660	10	120	10
NBC47662	299 --	16.86	2.68	0.01	7.41	4.98	1.09	0.48	0.20	0.30	59.32	0.50	5.99	99.82	1200	140	60	< 10	70	20
NBC47663	299 --	15.59	6.59	0.02	8.69	4.45	1.31	0.32	0.21	0.30	53.20	0.43	7.42	98.53	2020	120	180	< 10	60	10
NBC47664	299 --	18.00	0.50	0.01	13.09	5.81	0.93	0.47	0.21	0.24	51.46	0.53	8.78	100.03	1200	160	40	< 10	90	10
NBC47665	299 --	23.28	0.30	0.02	6.72	6.70	0.31	< 0.01	0.58	0.23	54.49	0.67	6.38	99.68	2040	170	110	< 10	90	160

CERTIFICATION:

Heidi Buchler



Chemex Labs Ltd.

Analytical Chemists * Geochemists * Registered Assayers

212 Brooksbank Ave., North Vancouver
British Columbia, Canada V7J 2C1
PHONE: 604-984-0221 FAX: 604-984-0218

TO: CYPHUS CANADA INC.
C/O RUBICON MINERALS
119 53RD ST.
DELTA, BC
V4M 3B3

Project: BC302
Comments: ATTN: MICHAEL GRAY CC: STEVE PARRY

Page Number : 1
Total Pages : 1
Certificate Date: 19-SEP-95
Invoice No. : 19526356
P.O. Number : 950804/805
Account : MUB

* PLEASE NOTE

CERTIFICATE OF ANALYSIS A9526356

SAMPLE	PREP CODE	Al2O3 %	CaO %	Cr2O3 %	Fe2O3 %	K2O %	MgO %	MnO %	Na2O %	P2O5 %	SiO2 %	TiO2 %	LOI %	TOTAL %	Ba ppm	Rb ppm	Sr ppm	Nb ppm	Zr ppm	Y ppm
		XRF	XRF	XRF	XRF	XRF	XRF	XRF	XRF	XRF	XRF	XRF	XRF	XRF	%					
NBC 47704	299 --	16.58	5.46	0.03	6.03	1.75	2.41	0.11	3.24	0.27	54.48	0.74	8.65	99.75	1020	30	670	< 10	110	10
NBC 47706	299 --	17.53	3.49	< 0.01	5.34	3.09	1.48	0.14	1.69	0.24	60.82	0.65	5.46	99.93	1700	70	390	< 10	120	10
NBC 47707	299 --	17.14	5.10	0.01	4.48	1.85	0.90	0.11	4.02	0.26	58.80	0.56	5.71	98.94	1660	30	730	10	120	10
NBC 47709	299 --	17.52	4.45	0.02	5.23	2.49	1.15	0.25	1.64	0.25	58.57	0.43	7.92	99.92	1240	40	390	< 10	90	20
NBC 47710	299 --	16.30	6.25	0.03	5.26	2.67	0.62	0.20	1.27	0.24	58.83	0.40	6.54	98.61	2560	60	5730	< 10	80	20
NBC 47711	299 --	17.01	6.16	0.02	6.44	2.04	1.23	0.28	1.50	0.24	56.60	0.41	7.34	99.27	980	40	440	< 10	80	10
NBC 47713	299 --	18.61	0.87	0.02	5.84	2.77	0.29	0.18	1.50	0.25	63.80	0.45	5.39	99.97	1540	70	520	< 10	100	20
NBC 47714	299 --	11.89	12.45	0.01	5.76	1.12	1.82	0.44	1.24	0.18	52.15	0.28	11.85	99.19	1000	20	370	< 10	60	10
NBC 47716	299 --	-----	-----	-----	-----	-----	-----	-----	-----	-----	-----	-----	-----	-----	320	10	210	< 10	30	10
NBC 47718	299 --	-----	-----	-----	-----	-----	-----	-----	-----	-----	-----	-----	-----	-----	500	20	180	< 10	30	10
NBC 47719	299 --	8.79	12.04	0.04	7.86	1.54	5.61	0.76	0.63	0.21	47.10	0.30	13.79	98.67	720	30	200	< 10	40	10
NBC 47720	299 --	-----	-----	-----	-----	-----	-----	-----	-----	-----	-----	-----	-----	-----	840	30	370	< 10	50	10
NBC 47722	299 --	18.22	2.33	0.03	5.24	2.98	1.23	0.14	2.79	0.27	60.99	0.46	5.11	99.79	1180	70	180	< 10	100	20
NBC 47723	299 --	19.18	0.40	< 0.01	5.79	3.08	0.70	0.12	1.64	0.28	62.85	0.50	4.77	99.31	1420	60	200	< 10	100	10
NBC 47724	299 --	12.50	10.52	0.03	9.09	2.02	3.07	0.15	0.98	0.37	49.07	0.61	10.75	99.16	1820	40	450	< 10	40	10
NBC 47726	299 --	17.65	3.29	< 0.01	6.05	2.32	2.39	0.09	3.86	0.30	57.78	0.87	4.47	99.07	1340	40	690	10	130	10
NBC 47727	299 --	16.92	1.15	0.04	4.47	2.57	0.97	0.04	4.37	0.27	64.90	0.55	3.21	99.46	2000	60	660	10	140	10
NBC 47729	299 --	4.11	1.75	0.02	2.58	1.17	0.40	0.07	0.10	0.11	86.57	0.23	2.82	99.93	720	20	30	< 10	50	10
NBC 47730	299 --	4.08	3.51	0.02	3.82	1.03	0.67	0.09	0.16	0.08	81.58	0.26	4.04	99.34	720	20	60	< 10	70	10
NBC 47731	299 --	6.75	1.81	0.01	2.76	1.98	1.04	0.09	0.17	0.12	80.40	0.35	3.80	99.28	1200	40	80	< 10	90	20
NBC 47732	299 --	4.96	4.20	0.03	3.45	1.38	1.88	0.08	0.26	0.04	76.63	0.27	6.11	99.29	780	30	130	< 10	60	20
NBC 47736	299 --	14.13	8.39	0.09	14.11	0.92	5.98	0.17	3.34	0.35	39.29	0.78	11.86	99.41	560	20	620	< 10	60	10
NBC 47738	299 --	-----	-----	-----	-----	-----	-----	-----	-----	-----	-----	-----	-----	-----	420	10	410	< 10	30	10
NBC 47741	299 --	16.94	5.54	0.01	6.84	3.17	1.96	0.16	1.99	0.34	51.55	0.45	10.62	99.57	1260	70	270	< 10	40	10
NBC 47747	299 --	17.45	3.07	0.01	6.06	2.41	2.00	0.38	4.24	0.27	58.47	0.43	4.57	99.36	2520	40	370	< 10	90	20
NBC 47754	299 --	15.53	0.75	0.01	2.49	3.71	0.50	0.03	4.73	0.14	69.19	0.41	1.61	99.10	1680	90	480	< 10	170	10
NBC 47755	299 --	14.49	0.29	< 0.01	2.21	1.94	0.64	0.02	4.86	0.12	72.47	0.36	1.65	99.05	700	50	390	< 10	170	10
NBC 47769	299 --	12.34	2.29	0.01	1.42	3.29	0.24	0.02	4.56	0.04	72.22	0.14	2.00	98.57	1200	70	240	< 10	90	10
NBC 47789	299 --	12.12	8.43	0.05	9.08	0.96	5.87	0.17	2.88	0.26	45.22	0.51	13.56	99.11	780	20	670	< 10	40	10
NBC 47790	299 --	11.45	14.72	0.06	11.94	2.53	5.86	0.32	1.01	0.30	28.52	0.59	21.78	99.08	1060	50	470	< 10	30	10
NBC 47791	299 --	14.20	7.04	0.01	10.27	3.17	4.18	0.18	1.25	0.31	43.89	0.69	14.13	99.32	1060	70	320	< 10	50	10
NBC 47796	299 --	17.12	4.35	0.01	4.93	2.19	1.41	0.09	3.72	0.25	60.33	0.64	4.29	99.33	1540	40	740	< 10	120	10
NBC 47797	299 --	18.55	0.20	< 0.01	4.59	2.86	0.38	0.01	2.76	0.23	65.62	0.45	3.84	99.49	1140	80	180	< 10	90	20
NBC 47943	299 --	15.12	1.53	< 0.01	2.20	3.75	0.59	0.04	4.41	0.13	69.48	0.37	1.67	99.29	2040	90	550	< 10	170	< 10
NBC 47946	299 --	15.74	6.18	0.02	10.70	1.79	5.45	0.16	3.91	0.66	49.32	1.88	3.81	99.62	1820	20	960	20	190	20
NBC 47950	299 --	11.35	4.82	0.03	3.26	2.52	1.08	0.12	1.95	0.12	68.84	0.42	4.67	99.18	1400	60	530	< 10	90	10

CERTIFICATION: *[Signature]*

* SOME SAMPLES UNABLE TO FUSE BY XRF, BEING DONE BY ICP WRA

Appendix VI

ICP + Au Silt Geochem Results



Chemex Labs Ltd.

Analytical Chemists * Geochemists * Registered Assayers

212 Brooksbank Ave., North Vancouver
British Columbia, Canada V7J 2C1
PHONE: 604-984-0221 FAX: 604-984-0218

CYPRUS CANADA INC.
C/O RUBICON MINERALS
119 53RD ST.
DELTA, BC
V4M 3B3

Page 1
Date: 07-SEP-95
A9526200

Comments: ATTN: STEVE PERRY

CERTIFICATE A9526200

CYPRUS CANADA INC.

BC302
950802

submitted to our lab in Vancouver, BC.
Report was printed on 7-SEP-95.

LAHTE AREA

SAMPLE PREPARATION

NUMBER SAMPLES	DESCRIPTION
6	Dry, sieve to -80 mesh
6	save reject
6	ICP - AQ Digestion charge

ANALYTICAL PROCEDURES					
CHEMEX CODE	NUMBER SAMPLES	DESCRIPTION	METHOD	DETECTION LIMIT	UPPER LIMIT
100	6	Au ppb: Fuse 10 g sample	FA-AAS	5	10000
2118	6	Ag ppm: 32 element, soil & rock	ICP-AES	0.2	200
2119	6	Al %: 32 element, soil & rock	ICP-AES	0.01	15.00
2120	6	As ppm: 32 element, soil & rock	ICP-AES	2	10000
2121	6	Ba ppm: 32 element, soil & rock	ICP-AES	10	10000
2122	6	Be ppm: 32 element, soil & rock	ICP-AES	0.5	100.0
2123	6	Bi ppm: 32 element, soil & rock	ICP-AES	2	10000
2124	6	Ca %: 32 element, soil & rock	ICP-AES	0.01	15.00
2125	6	Cd ppm: 32 element, soil & rock	ICP-AES	0.5	100.0
2126	6	Co ppm: 32 element, soil & rock	ICP-AES	1	10000
2127	6	Cr ppm: 32 element, soil & rock	ICP-AES	1	10000
2128	6	Cu ppm: 32 element, soil & rock	ICP-AES	1	10000
2150	6	Fe %: 32 element, soil & rock	ICP-AES	0.01	15.00
2130	6	Ga ppm: 32 element, soil & rock	ICP-AES	10	10000
2131	6	Hg ppm: 32 element, soil & rock	ICP-AES	1	10000
2132	6	K %: 32 element, soil & rock	ICP-AES	0.01	10.00
2151	6	La ppm: 32 element, soil & rock	ICP-AES	10	10000
2134	6	Mg %: 32 element, soil & rock	ICP-AES	0.01	15.00
2135	6	Mn ppm: 32 element, soil & rock	ICP-AES	5	10000
2136	6	Mo ppm: 32 element, soil & rock	ICP-AES	1	10000
2137	6	Na %: 32 element, soil & rock	ICP-AES	0.01	5.00
2138	6	Ni ppm: 32 element, soil & rock	ICP-AES	1	10000
2139	6	P ppm: 32 element, soil & rock	ICP-AES	10	10000
2140	6	Pb ppm: 32 element, soil & rock	ICP-AES	2	10000
2141	6	Sb ppm: 32 element, soil & rock	ICP-AES	2	10000
2142	6	Sc ppm: 32 elements, soil & rock	ICP-AES	1	10000
2143	6	Sr ppm: 32 element, soil & rock	ICP-AES	1	10000
2144	6	Ti %: 32 element, soil & rock	ICP-AES	0.01	5.00
2145	6	Tl ppm: 32 element, soil & rock	ICP-AES	10	10000
2146	6	U ppm: 32 element, soil & rock	ICP-AES	10	10000
2147	6	V ppm: 32 element, soil & rock	ICP-AES	1	10000
2148	6	W ppm: 32 element, soil & rock	ICP-AES	10	10000
2149	6	Zn ppm: 32 element, soil & rock	ICP-AES	2	10000

element ICP package is suitable for metals in soil and rock samples. Elements for which the nitric-aqua regia digestion is possibly incomplete are: Al, Ca, Cr, Ga, K, La, Mg, Na, Sr, Ti,



Chemex Labs Ltd.

Analytical Chemists • Geochemists • Registered Assayers
 212 Brooksbank Ave., North Vancouver
 British Columbia, Canada V7J 2C1
 PHONE: 604-984-0221 FAX: 604-984-0218

CHENEX CANADA INC.
 C/O RUBICON MINERALS
 119 53RD ST.
 DELTA, BC
 V4M 3B3

Project: BC302
 Comments: ATTN: STEVE PERRY

Page 1 of 1 : 1-A
 Total Pages : 1
 Certificate Date: 07-SEP-95
 Invoice No. : 19526200
 P.O. Number : 950802
 Account : MUB

CERTIFICATE OF ANALYSIS A9526200

SAMPLE	PREP CODE		Au ppb	Ag ppm	Al %	As ppm	Ba ppm	Be ppm	Bi ppm	Ca %	Cd ppm	Co ppm	Cr ppm	Cu ppm	Fe %	Ga ppm	Hg ppm	K %	La ppm	Mg %	Mn ppm
	FA+AA																				
NBC47651	201	202	< 5	< 0.2	0.90	< 2	250	< 0.5	< 2	1.59	0.5	11	10	57	3.80	< 10	< 1	0.02	< 10	0.56	1045
NBC47660	201	202	255	< 0.2	1.10	20	670	< 0.5	2	0.85	0.5	28	34	94	5.65	< 10	< 1	0.20	< 10	0.92	1575
NBC47661	201	202	< 5	2.0	0.92	44	540	< 0.5	< 2	0.54	6.5	15	10	92	5.26	< 10	< 1	0.06	< 10	0.40	4680
NBC47667	201	202	< 5	< 0.2	1.01	< 2	290	< 0.5	< 2	2.34	0.5	11	8	86	3.63	< 10	< 1	0.06	10	0.80	1250
NBC47668	201	202	125	< 0.2	1.41	4	260	< 0.5	< 2	2.80	< 0.5	12	14	77	3.51	< 10	< 1	0.06	< 10	1.14	995
NBC47669	201	202	5	< 0.2	1.16	< 2	230	< 0.5	4	0.58	< 0.5	10	9	53	4.06	< 10	< 1	0.07	10	0.95	995

CERTIFICATION: *Yhai D Ma*



Chemex Labs Ltd.

Analytical Chemists * Geochemists * Registered Assayers

212 Brooksbank Ave., North Vancouver
British Columbia, Canada V7J 2C1
PHONE: 604-984-0221 FAX: 604-984-0218

To: CYPRUS CANADA INC.
C/O RUBICON MINERALS
119 53RD ST.
DELTA, BC
V4M 3B3

Project: BC302
Comments: ATTN: STEVE PERRY

Page 1 of 1
Total Pages : 1
Certificate Date: 07-SEP-95
Invoice No. : 19526200
P.O. Number : 950802
Account : MUB

CERTIFICATE OF ANALYSIS

A9526200

SAMPLE	PREP CODE		Mo	Na	Ni	P	Pb	Sb	Sc	Sr	Ti	Tl	U	V	W	Zn
			ppm	%	ppm	ppm	ppm	ppm	ppm	ppm	ppm	%	ppm	ppm	ppm	ppm
NBC47651	201	202	< 1	< 0.01	7	1860	36	4	5	74	0.01	< 10	< 10	51	< 10	126
NBC47660	201	202	1	0.01	31	1740	14	4	13	102	0.02	< 10	< 10	67	< 10	82
NBC47661	201	202	2	< 0.01	8	1740	204	12	6	69	< 0.01	< 10	< 10	36	< 10	926
NBC47667	201	202	< 1	0.01	3	1580	28	4	3	67	0.03	< 10	< 10	59	< 10	128
NBC47668	201	202	< 1	0.01	6	1350	20	4	7	74	0.02	< 10	< 10	64	< 10	84
NBC47669	201	202	< 1	0.01	6	1590	20	4	4	29	0.04	< 10	< 10	80	< 10	94

CERTIFICATION: *Steve Perry*



Chemex Labs Ltd.

Analytical Chemists * Geochemists * Registered Assayers

212 Brooksbank Ave., North Vancouver
British Columbia, Canada V7J 2C1
PHONE: 604-984-0221 FAX: 604-984-0218

Project: CYPRUS CANADA INC.
C/O RUBICON MINERALS
119 53RD ST.
DELTA, BC
V4M 3B3

Project: BC302
Comments: ATTN:GARFIELD MACVEIGH CC: STEVE PERRY

Page 1 of 1 : 1-A
Total Pages : 1
Certificate Date: 18-SEP-95
Invoice No. : I9527303
P.O. Number :
Account : MUB

CERTIFICATE OF ANALYSIS

A9527303

SAMPLE	PREP CODE		Au ppb	Ag ppm	Al %	As ppm	Ba ppm	Be ppm	Bi ppm	Ca %	Cd ppm	Co ppm	Cr ppm	Cu ppm	Fe %	Ga ppm	Hg ppm	K %	La ppm	Mg %	Mn ppm
	FA+AA																				
NBC 47621	201	202	225	0.2	1.05	20	90	< 0.5	< 2	0.65	1.5	20	2	131	7.77	< 10	< 1	0.07	< 10	0.38	1325

CERTIFICATION: Hart Beckler



Chemex Labs Ltd.

Analytical Chemists * Geochemists * Registered Assayers

212 Brooksbank Ave., North Vancouver
British Columbia, Canada V7J 2C1
PHONE: 604-984-0221 FAX: 604-984-0218

To: CYPRUS CANADA INC.
C/O RUBICON MINERALS
119 53RD ST.
DELTA, BC
V4M 3B3

Project: BC302
Comments: ATTN:GARFIELD MACVEIGH CC: STEVE PERRY

Page Number : 1-B
Total Pages : 1
Certificate Date: 18-SEP-95
Invoice No. : 19527303
P.O. Number :
Account : MUB

CERTIFICATE OF ANALYSIS

A9527303

SAMPLE	PREP CODE		Mo	Na	Ni	P	Pb	Sb	Sc	Sr	Ti	Tl	U	V	W	Zn
			ppm	%	ppm	ppm	ppm	ppm	ppm	ppm	%	ppm	ppm	ppm	ppm	ppm
NBC 47621	201	202	7	0.01	4	1970	42	2	4	109	< 0.01	< 10	< 10	29	< 10	188

CERTIFICATION: *David Sackler*



Chemex Labs Ltd.

Analytical Chemists * Geochemists * Registered Assayers

212 Brooksbank Ave., North Vancouver
British Columbia, Canada V7J 2C1
PHONE: 604-984-0221 FAX: 604-984-0218

to: CYPRUS CANADA INC.
C/O RUBICON MINERALS
119 63RD ST.
DELTA, BC
V4M 3B3

Page 1 of 1
Total Pages : 1
Certificate Date: 08-SEP-95
Invoice No. : 19528358
P.O. Number : 950804/806
Account : MUB

Project: BC302
Comments: ATTN: MICHAEL GRAY CC: STEVE PARRY

CERTIFICATE OF ANALYSIS A9526358

SAMPLE	PREP CODE	Au ppb FA+AA	Ag ppm	Al %	As ppm	Ba ppm	Be ppm	Bi ppm	Ca %	Cd ppm	Co ppm	Cr ppm	Cu ppm	Fe %	Ga ppm	Hg ppm	K %	La ppm	Mg %	Mn ppm
NBC 47708	201 202	< 5	0.2	0.35	6	370	< 0.5	< 2	0.26	1.5	10	2	16	4.42	< 10	< 1	0.05	< 10	0.04	1585
NBC 47721	201 202	20	0.6	0.70	42	120	< 0.5	< 2	0.52	3.0	18	4	74	5.69	< 10	< 1	0.08	10	0.23	1995
NBC 47734	201 202	10	0.6	1.76	48	130	< 0.5	< 2	0.79	0.5	28	35	105	8.72	< 10	< 1	0.19	10	2.24	1040
NBC 47742	201 202	< 5	0.2	1.78	32	300	< 0.5	< 2	1.32	< 0.5	24	58	100	5.74	< 10	< 1	0.21	10	2.10	975
NBC 47743	201 202	< 5	0.4	0.80	52	110	< 0.5	< 2	0.71	1.0	18	20	66	3.69	< 10	< 1	0.80	10	0.42	900
NBC 47744	201 202	< 5	0.4	3.84	66	170	1.0	< 2	0.71	1.5	82	58	50	4.08	< 10	< 1	0.07	20	0.56	5260
NBC 47748	201 202	< 5	0.8	1.10	14	430	< 0.5	< 2	0.53	0.5	14	23	55	5.33	< 10	< 1	0.09	10	0.55	1090
NBC 47749	201 202	< 5	0.4	1.57	24	140	< 0.5	< 2	0.82	< 0.5	23	57	90	5.15	< 10	< 1	0.12	10	1.71	805
NBC 47750	201 202	625	0.4	1.25	16	250	< 0.5	< 2	2.24	0.5	14	11	99	4.94	< 10	< 1	0.06	10	0.96	1035
NBC 47756	201 202	< 5	0.2	1.61	30	90	< 0.5	< 2	0.80	0.5	14	35	34	2.60	< 10	< 1	0.18	10	0.71	1110
NBC 47757	201 202	< 5	0.2	0.92	32	110	< 0.5	< 2	1.03	1.5	20	21	33	2.56	< 10	< 1	0.72	10	0.31	2590
NBC 47759	201 202	< 5	0.2	1.44	34	130	< 0.5	< 2	0.88	1.5	21	37	47	3.28	< 10	< 1	0.57	10	0.57	2390
NBC 47760	201 202	60	0.4	1.63	26	70	0.5	< 2	0.65	0.5	13	41	36	2.70	< 10	< 1	0.25	10	0.78	725
NBC 47762	201 202	< 5	0.4	1.95	40	110	0.5	< 2	0.81	1.5	28	44	44	3.33	< 10	< 1	0.19	10	0.74	2850
NBC 47763	201 202	< 5	0.4	1.78	38	110	0.5	< 2	0.63	1.0	22	44	39	3.16	< 10	< 1	0.30	10	0.78	2020
NBC 47768	201 202	< 5	0.4	2.25	22	120	0.5	< 2	0.73	0.5	24	66	71	4.58	< 10	< 1	0.10	20	1.35	1460
NBC 47770	201 202	< 5	0.2	1.91	26	100	0.5	< 2	0.59	< 0.5	20	61	29	4.04	< 10	< 1	0.07	10	1.17	950
NBC 47771	201 202	< 5	0.4	2.27	34	140	0.5	< 2	0.85	0.5	29	66	47	4.83	< 10	< 1	0.07	20	1.45	1535
NBC 47773	201 202	< 5	0.4	1.78	22	210	0.5	< 2	0.98	0.5	18	27	45	3.98	< 10	< 1	0.09	10	1.05	1680
NBC 47784	201 202	< 5	0.2	2.38	30	260	0.5	< 2	0.82	1.0	41	30	29	2.86	< 10	< 1	0.13	10	0.31	6230
NBC 47785	201 202	210	0.6	0.79	754	110	0.5	< 2	1.07	3.0	29	12	104	5.34	< 10	< 1	0.06	10	0.50	1195
NBC 47786	201 202	< 5	0.2	2.33	48	250	1.0	< 2	0.64	0.5	44	37	34	3.73	< 10	< 1	0.06	10	0.34	4630

CERTIFICATION:

Hart Buchler



Chemex Labs Ltd.

Analytical Chemists * Geochemists * Registered Assayers
 212 Brooksbank Ave., North Vancouver
 British Columbia, Canada V7J 2C1
 PHONE: 604-984-0221 FAX: 604-984-0218

To: CYPRIUS CANADA INC.
 C/O RUBICON MINERALS
 119 53RD ST.
 DELTA, BC
 V4M 3B3

Project: BC302
 Comments: ATTN: MICHAEL GRAY CC: STEVE PARRY

Page 1 of 1
 Total Pages: 1
 Certificate Date: 08-SEP-98
 Invoice No.: 19526358
 P.O. Number: 950804/808
 Account: MUB

CERTIFICATE OF ANALYSIS

A9526358

SAMPLE	PREP CODE		Mo	Na	Ni	P	Pb	Sb	Sc	Sr	Ti	Tl	U	V	W	Zn
			ppm	%	ppm	ppm	ppm	ppm	ppm	ppm	%	ppm	ppm	ppm	ppm	ppm
NBC 47708	201	202	< 1	0.01	1	1400	86	2	5	15	< 0.01	< 10	< 10	8	< 10	170
NBC 47721	201	202	3	0.02	9	1680	108	2	4	45	< 0.01	< 10	< 10	23	< 10	284
NBC 47734	201	202	< 1	0.01	29	1790	26	4	18	57	0.16	< 10	< 10	255	< 10	94
NBC 47742	201	202	< 1	0.01	22	1560	16	2	17	75	0.11	< 10	< 10	155	< 10	66
NBC 47743	201	202	3	0.01	54	2050	24	6	6	54	< 0.01	< 10	< 10	28	< 10	114
NBC 47744	201	202	2	< 0.01	168	1630	32	10	5	67	0.01	< 10	< 10	27	< 10	346
NBC 47748	201	202	< 1	0.01	21	1680	30	4	8	68	0.03	< 10	< 10	92	< 10	156
NBC 47749	201	202	1	0.01	41	1360	18	4	11	58	0.06	< 10	< 10	93	< 10	84
NBC 47750	201	202	< 1	0.01	7	1560	62	4	6	67	0.04	< 10	< 10	82	< 10	106
NBC 47756	201	202	1	0.01	58	1260	30	4	2	116	0.01	< 10	< 10	28	< 10	108
NBC 47757	201	202	1	0.02	64	1840	24	4	1	161	< 0.01	< 10	< 10	13	< 10	106
NBC 47759	201	202	2	0.02	85	1660	34	4	2	122	0.01	< 10	< 10	25	< 10	150
NBC 47760	201	202	< 1	0.01	66	1310	24	4	2	83	0.01	< 10	< 10	33	< 10	120
NBC 47762	201	202	2	0.01	98	1680	32	2	3	102	0.01	< 10	< 10	33	< 10	168
NBC 47763	201	202	1	0.01	87	1380	34	4	3	84	0.02	< 10	< 10	34	< 10	148
NBC 47768	201	202	1	0.04	79	1280	24	4	7	69	0.10	< 10	< 10	66	< 10	196
NBC 47770	201	202	< 1	0.05	63	1110	14	4	4	58	0.12	< 10	< 10	67	< 10	146
NBC 47771	201	202	< 1	0.05	86	1480	24	4	6	97	0.11	< 10	< 10	72	< 10	184
NBC 47773	201	202	< 1	0.03	63	1310	26	4	8	102	0.09	< 10	< 10	70	< 10	150
NBC 47784	201	202	1	< 0.01	73	1720	18	6	3	155	0.01	< 10	< 10	19	< 10	224
NBC 47785	201	202	4	< 0.01	65	1580	22	14	7	109	< 0.01	< 10	< 10	20	< 10	248
NBC 47786	201	202	1	< 0.01	83	1100	30	6	4	122	< 0.01	< 10	< 10	26	< 10	236

CERTIFICATION:

Hart Buchler

Appendix IV
Rock Sample Descriptions

1	Sample#	Sample Type	Rock Type	Mineralization	Comments
2	NBC47787	Float	Carb-silica	tr tet, cp, sp	Altered carbonate-silica rock
3	NBC47788	Float	carb-breccia	1-2% py	Altered carbonate breccia rock
4	NBC47789	Float	fp porphyry	<1% py	Carbonate altered fp porphyry
5	NBC47790	Float	"	"	" & minor fuchsite(?) alteration
6	NBC47791	Float	Carb rock	/	Carbonate altered rock
7	NBC47792	Float	carb-breccia	1% py	Brecciated carbonate vein
8	NBC47793	Float	clastic rock	3% py	Carbonate altered clastic rock
9	NBC47794	Float	Carb rock	tr py	carbonated altered with QVs
10	NBC47795	Float	Argillite breccia	tr py	Carbonated altered
11	NBC47796	outcrop	fp-hb porphyry	\	limonite flecked
12	NBC47797	outcrop	fp porphyry	3% py	strongly sericitic
13	NBC47798	outcrop	fp porphyry	1-3% py	"
14	NBC47799	outcrop	fp porphyry	"	" and schistose
15	NBC47800	outcrop	fp porphyry	2-5% py	"
16	NBC47701	outcrop	carbonate vein	tr	3m chip
17	NBC47702	outcrop	qz-carb vein	<1% py	2m chip; vein stockwork
18	NBC47703	Float	siltstone	2% py	Brecciated carbonate vein stockwork
19	NBC47704	outcrop	hb porphyry	1% py	2m thick dyke
20	NBC47705	outcrop	qz vein	tr py	5 cm thick
21	NBC47706	outcrop	fp-hb porphyry	\	rusty weathering
22	NBC47707	outcrop	diorite	tr py	10% disseminated iron carbonate
23	NBC47709	outcrop	qz-sericite-py	4% py	highly schistose
24	NBC47710	outcrop	sericite schist	3% py	qtz vein network
25	NBC47711	outcrop	altered porphyry	3% py	very sericitic
26	NBC47713	outcrop	altered porphyry	\	carbonate altered, malachite stain
27	NBC47714	outcrop	clay-carbonate	\	pyrophyllite(?) -carbonate vein
28	NBC47716	outcrop	siliceous veins	5-10% py	rusty weathering
29	NBC47717	outcrop	siliceous veins	\	3cm chalcedonic(?) vein
30	NBC47718	outcrop	altered banded	8% py	fg banded altered unit
31	NBC47719	outcrop	"	8% py	"
32	NBC47720	outcrop	altered porphyry	3-5% py	altered porphyry with py stringers
33	NBC47722	outcrop	k-spar vein?	1-2% py	\
34	NBC47723	outcrop	sericitic rock	1-2% py	\
35	NBC47724	outcrop	fp porphyry	\	altered
36	NBC47725	outcrop	fg sediment	\	5% qv
37	NBC47726	outcrop	hb porphyry	tr py	50cm thick dyke
38	NBC47727	outcrop	hb porphyry	2% py	altered
39	NBC47728	outcrop	hb porphyry	tr py	cuts fg black sediment
40	NBC47729	outcrop	chert breccia	2% py	5m chip; local carbonaceous seams
41	NBC47730	outcrop	chert breccia	\	\
42	NBC47731	outcrop	bedded chert	\	pinkish Mn mineral present?
43	NBC47732	outcrop	chert breccia	1-3% py	carbonaceous
44	NBC47733	outcrop	chert breccia	tr py	\
45	NBC47735	outcrop	dacite porphyry	\	carbonate altered; 50 cm thick
46	NBC47736	outcrop	carb-chl breccia	1%po, 1%py	vein-bx; chlorite-carbonate
47	NBC47737	outcrop	siltstone	\	rusty weathering
48	NBC47738	outcrop	siliceous veins	3%py, <1%sp	30cm thick vein structure
49	NBC47739	outcrop	dacite porphyry	\	near sediment contact
50	NBC47740	outcrop	semi-msv sulph	30% pyrite	sulphidic chert

51	Sample#	Sample Type	Rock Type	Mineralization	Comments
52	NBC47741	outcrop	altered intrusive	\	\
53	NBC47745	Float	qz veined sed	\	\
54	NBC47746	Float	siltstone	\	rusty weathering
55	NBC47747	SKREE	diorite	1% py	fp porphyry
56	NBC47622	Float	quartz vein	<1%py, tr cp	siliceous, sericitic
57	NBC47623	outcrop	carb altered	\	minor qz veins
58	NBC47624	outcrop	sericite altered	\	minor qz veins
59	NBC47625	outcrop	Carb-silica	1% py	highly altered
60	NBC47626	outcrop	sericite altered	miner malach	highly altered and veined
61	NBC47627	Float	sericite-silica	3% py	highly altered
62	NBC47628	Float	sericite-silica	5%py	highly altered and veined
63	NBC47629	Float	carbonate vein	1% py	with inclusions of ser-silica schist
64	NBC47630	Float	qz-carb vein	2% py	with sericitic portions
65	NBC47631	Float	qz-carb vein	2% py	with sericitic portions
66	NBC47632	Float	sericite-chl rock	2% py	greenish mica
67	NBC47633	outcrop	sericite-chl rock	\	\
68	NBC47634	outcrop	altered volcanic	\	veined purple and green volcaniclast
69	NBC47635	Float	sericite-pyrite	3% py	very rusty
70	NBC47636	outcrop	chl-ser	ga-cp-sp diss	altered with disseminated mineralz
71	NBC47637	outcrop	chl-ser-carb	1% py	on trend with NBC47639
72	NBC47638	outcrop	mg intrusive	\	host rock to NBC47639 mineralizatr
73	NBC47639	outcrop	qz-sericite-py	galena-cp	sericitic
74	NBC47640	Float	volcanic(?)/sed	1% py	fractured and brecciated
75	NBC47641	Float	Carb-silica	\	intensely altered; silvery metallic min
76	NBC47642	Float	altered rock	\	intrusive/sediment?
77	NBC47643	Float	qz-carb vein	\	minor jasper as veins and fragments
78	NBC47644	Float	qz-carb vein	1% py	minor green mica
79	NBC47645	Float	siliceous porphyry	1% py	chalcedonic veining
80	NBC47646	Float	qz vein	<1% py	tr tourmaline(?)
81	NBC47647	outcrop	qz-carb vein bx	\	2m chip; includes sediment rafts
82	NBC47648	Float	siltstone breccia	\	silica-carbonate alteration
83	NBC47649	Float	siltstone breccia	\	orangey brown weathering
84	NBC47650	outcrop	fp porph diorite	\	\
85	NBC47651	silt	\	\	\
86	NBC47652	outcrop	carb vein bx	1% py	30cm vein in green schist
87	NBC47653	outcrop	green schist	<1% py	wallrock to NBC47652
88	NBC47654	float	qz-carb rock	<1% py	boulder subrounded; note green mica
89	NBC47655	Float	carb altered rock	1% py	carbonate altered intrusive?
90	NBC47656	Float	carb-ser-chl rock	<1% py	large boulder
91	NBC47657	Float	carb-ser-chl rock	1% py	5% calcite cross-cutting veins
92	NBC47658	outcrop	amphibole porph	<1% py	fresh looking with fg-mg groundmass
93	NBC47659	Float	carb-qz rock	\	northfacing draw of NBC47658
94	NBC47660	moss mat	\	\	\
95	NBC47661	silt	\	\	\
96	NBC47662	Float	chl-ser rock	2-3% py	black weathering, and rusty
97	NBC47663	Float	chl-ser-sil rock	3-5% py	angular
98	NBC47664	Float	siliceous rock	10% py	angular
99	NBC47665	Float	qz-sericite-py	20% py	pale yellow; pyrite as stringers
100	NBC47666	outcrop?	qz-sericite-py	5-10% py	rusty gossan

101	Sample#	Sample Type	Rock Type	Mineralization	Comments
102	NBC47667	silt	\	\	\
103	NBC47668	silt	\	\	\
104	NBC47669	silt	\	\	\
105	NBC47670	silt	\	\	\
106	NBC47671	Float	carb-qz vein	\	in moraine float
107	NBC47672	Float	calcite vein	\	in moraine float

