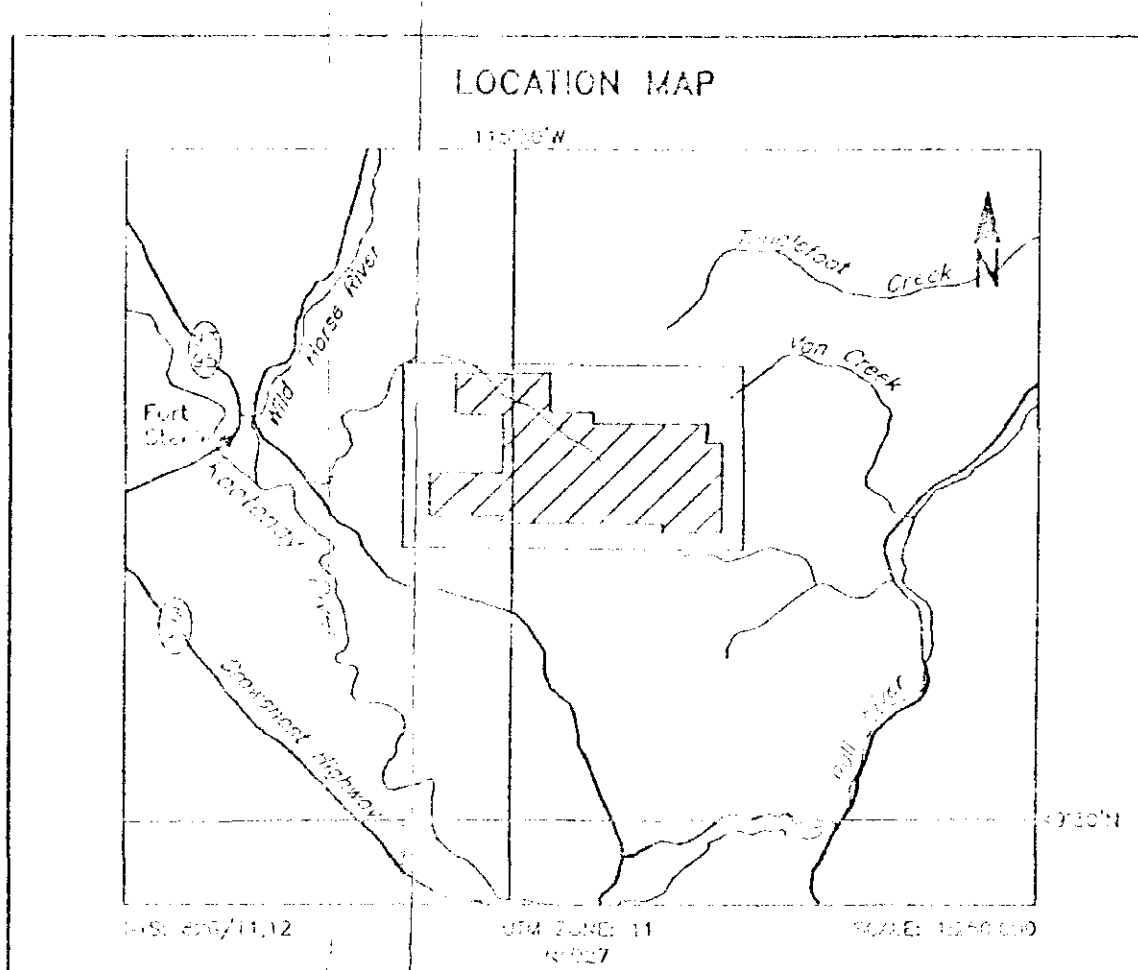




GEOLOGICAL SURVEY BRANCH
ASSESSMENT REPORT

25,109⁰



TECHNICAL SUMMARY

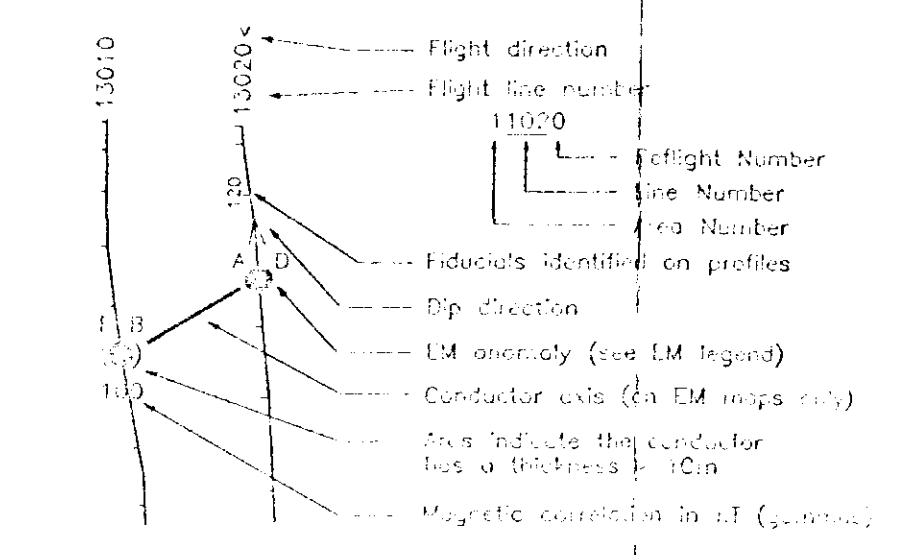
Magnetometer: GDS 1220
 Data sampling interval: 1 second
 Magnetometer sensitivity: 0.1 nT
 Systematic error: 0.1 nT

Flight direction: North
 Flight speed: 100 m/s
 Flight altitude: 100 m
 Flight line spacing: 100 m

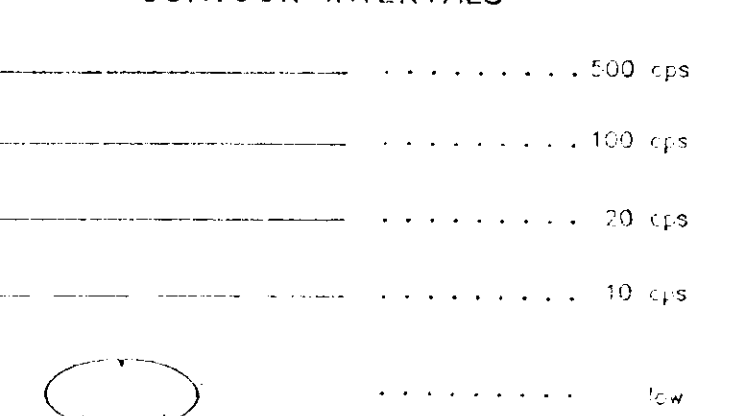
ELECTROMAGNETIC ANOMALIES

Code	Priority	Description
1	High	Conductivity anomalies
2	Medium	Magnetic anomalies
3	Low	Structural anomalies
4	Low	Topographic anomalies
5	Low	Other anomalies

FLIGHT LINES WITH EM ANOMALIES



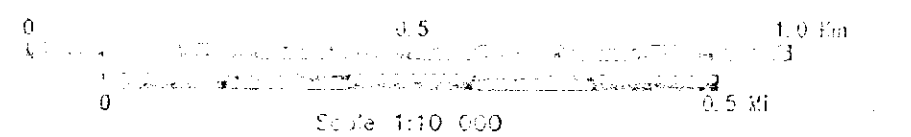
CONTOUR INTERVALS

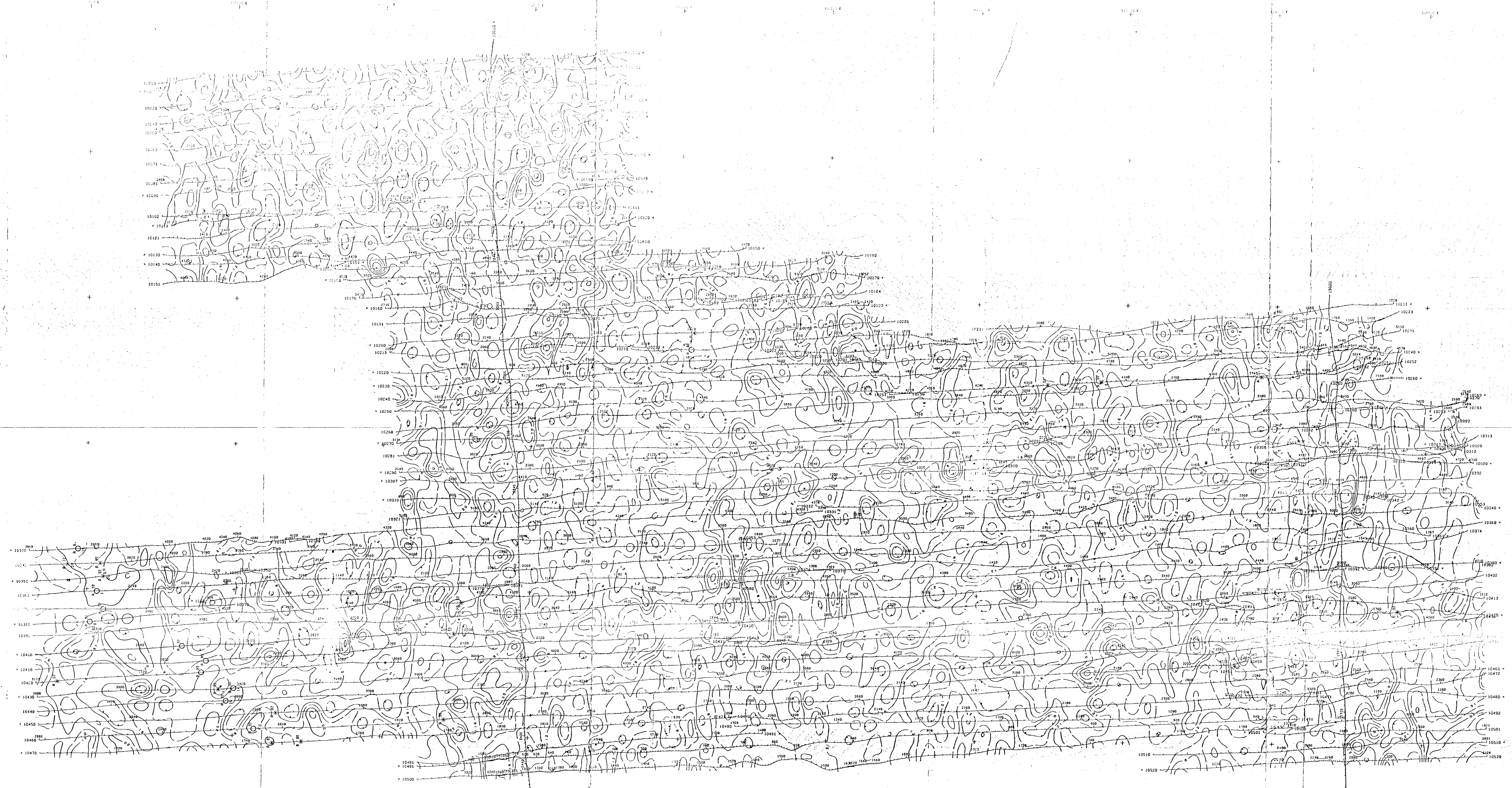


BIG B RESOURCES INC.
KOOTENAY RIVER AREA, BRITISH COLUMBIA

RADIOMETRICS
TOTAL COUNT

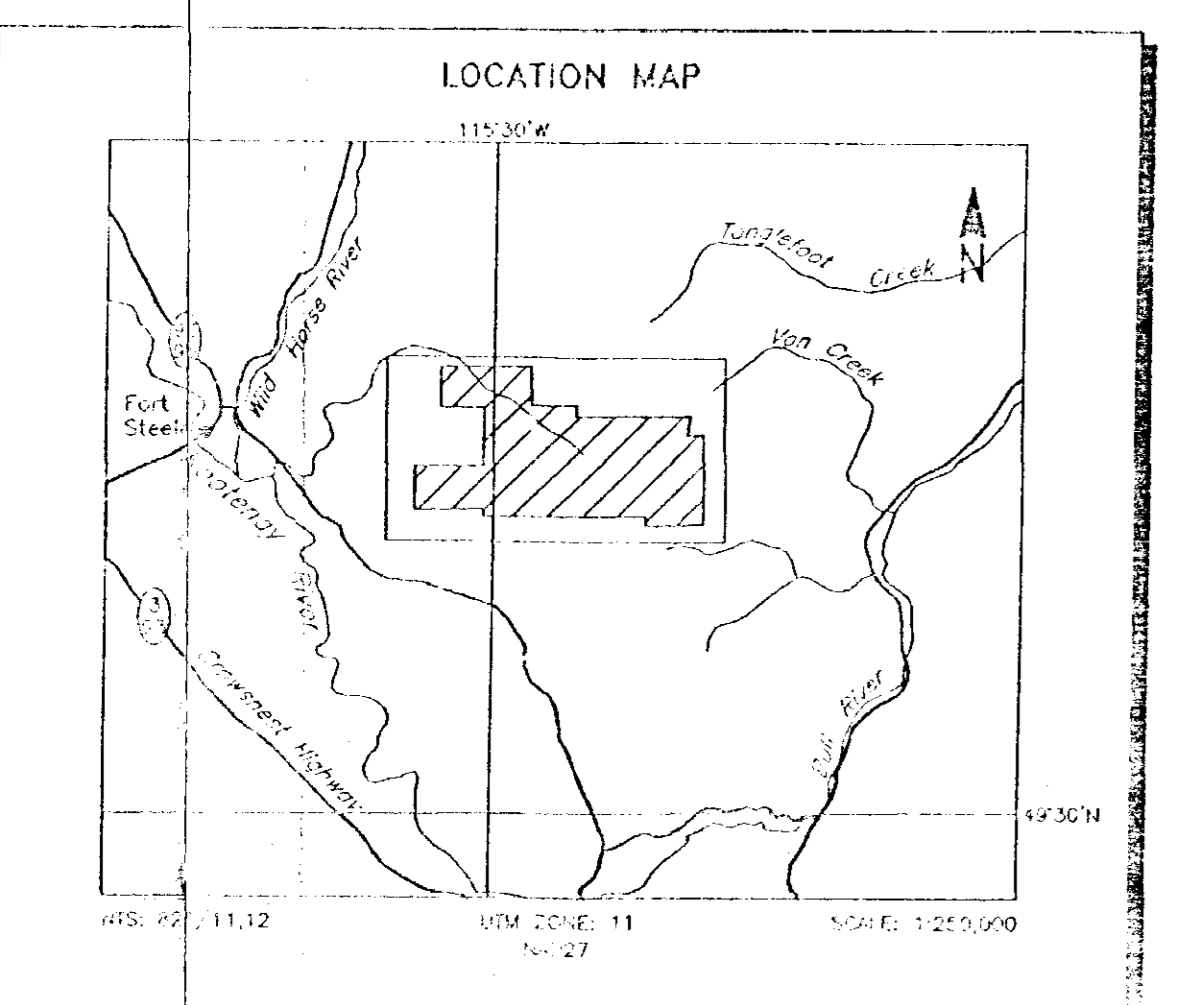
DATE: 2008-11-12
 JOB: 1128
 PROJECT: 25,109





GEOLOGICAL SURVEY BRANCH
ASSESSMENT REPORT

25,109



TECHNICAL SUMMARY

Navigation: Differential GPS positioning
 Data reduction grid interval: 25 metres
 Terrain clearance: Electromagnetic sensor 30 m
 Altitude: 40 m
 Data sampling interval: 0.1 second
 Magnetometer / sensitivity: 0.1 nT
 Electromagnetic system: DHEM
 Spectrometer: 4x4x4

Frequency	Sensitivity	Cell Orientation
100 Hz	0.1 ppm	Vertical coil
100 Hz	0.2 ppm	Vertical coil
100 Hz	0.1 ppm	Horizontal coil
100 Hz	0.2 ppm	Horizontal coil
100 Hz	0.1 ppm	Horizontal coil
100 Hz	0.2 ppm	Horizontal coil

FLY ARCHMAGNETIC ANOMALIES

Grade	Anomaly	Description
7	10000	10000 - 10000
6	10000	10000 - 10000
5	10000	10000 - 10000
4	10000	10000 - 10000
3	10000	10000 - 10000
2	10000	10000 - 10000
1	10000	10000 - 10000

FLIGHT LINES WITH EM ANOMALIES

Flight direction: [Symbol]

Flight line number: 11050

Flight Number: [Symbol]

Line Number: [Symbol]

Line Printer: [Symbol]

Fiducials identified on profiles: [Symbol]

Dip direction: [Symbol]

EM anomaly (see EM legend): [Symbol]

Conductor axis (EM maps only): [Symbol]

Axis indicate the conductor has a thickness of 10m: [Symbol]

Magnetic correlation is of (approx): [Symbol]

CONTOUR INTERVALS

100 cps

20 cps

4 cps

2 cps

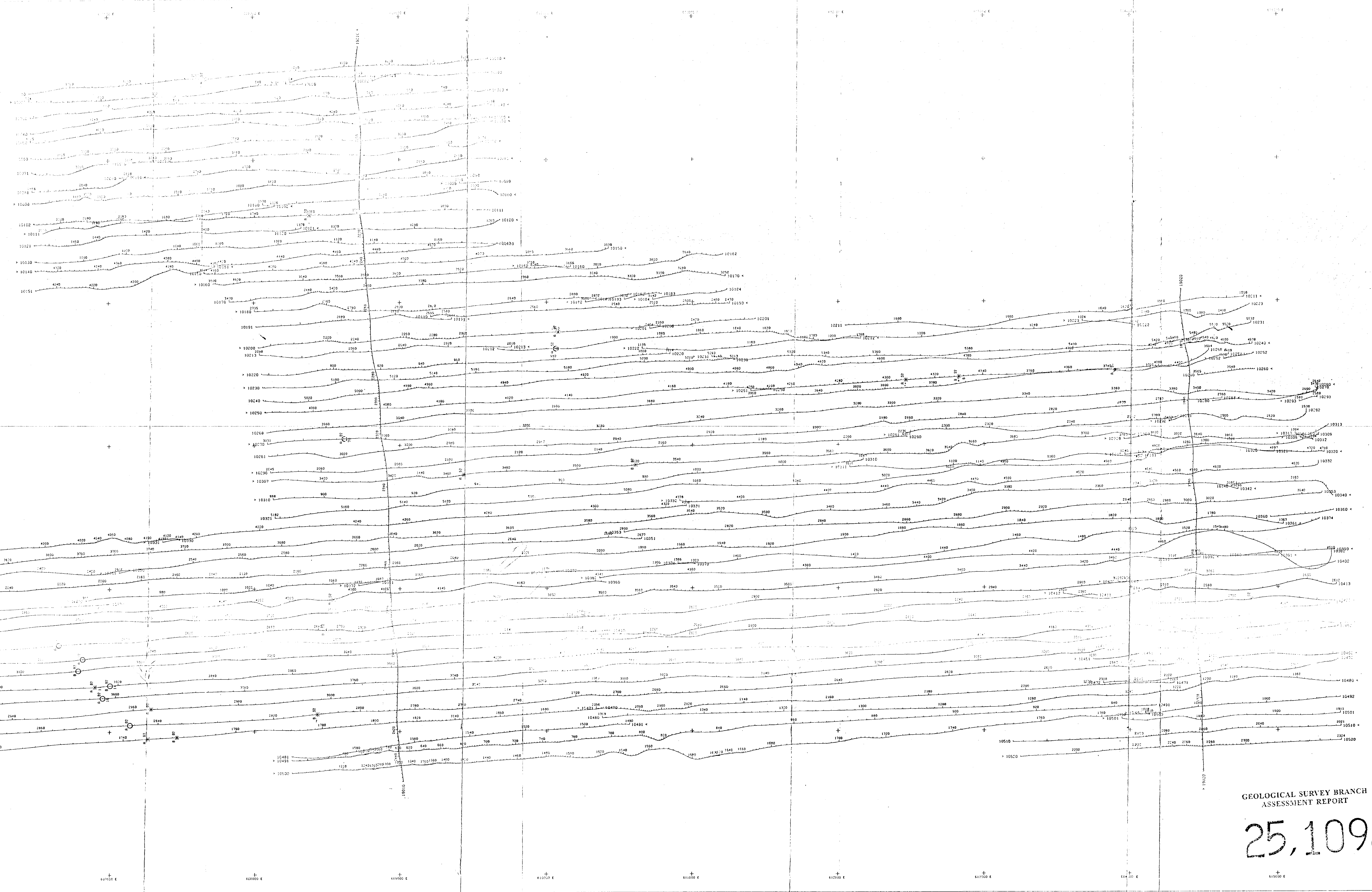
low

BIG B RESOURCES INC.
 KOOTENAY RIVER AREA, BRITISH COLUMBIA

**RADIOMETRICS
 URANIUM COUNTS**

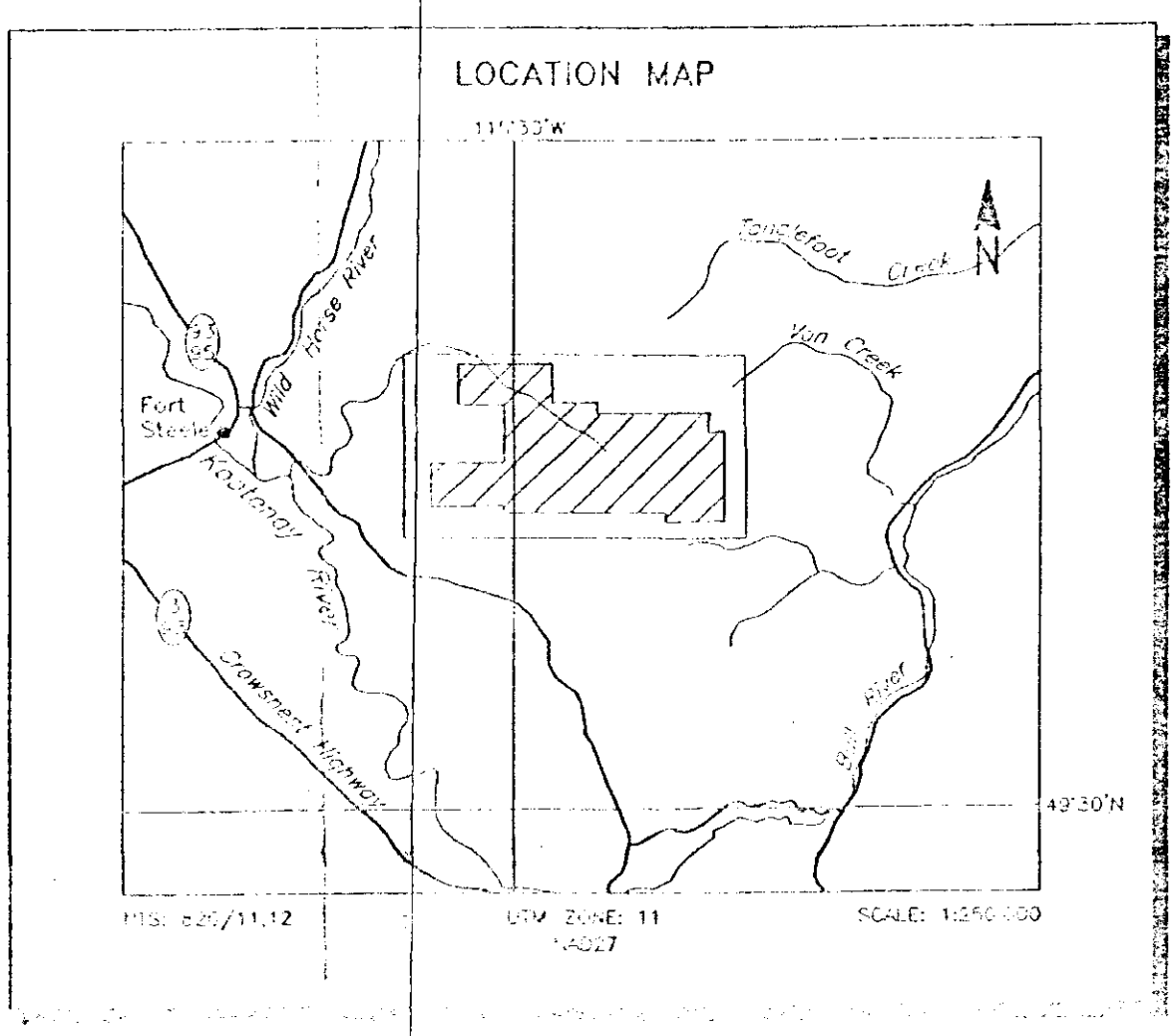
DIGHEM SURVEY: NIS: 855/1112 GREENHOUSE DATA
 DATE: OCTOBER, 1995 4/8 12:28 SHEET: 1
 DIGHEM, A division of CGG Canada Ltd.

Scale 1:10 000



GEOLOGICAL SURVEY BRANCH
ASSESSMENT REPORT

25,109³

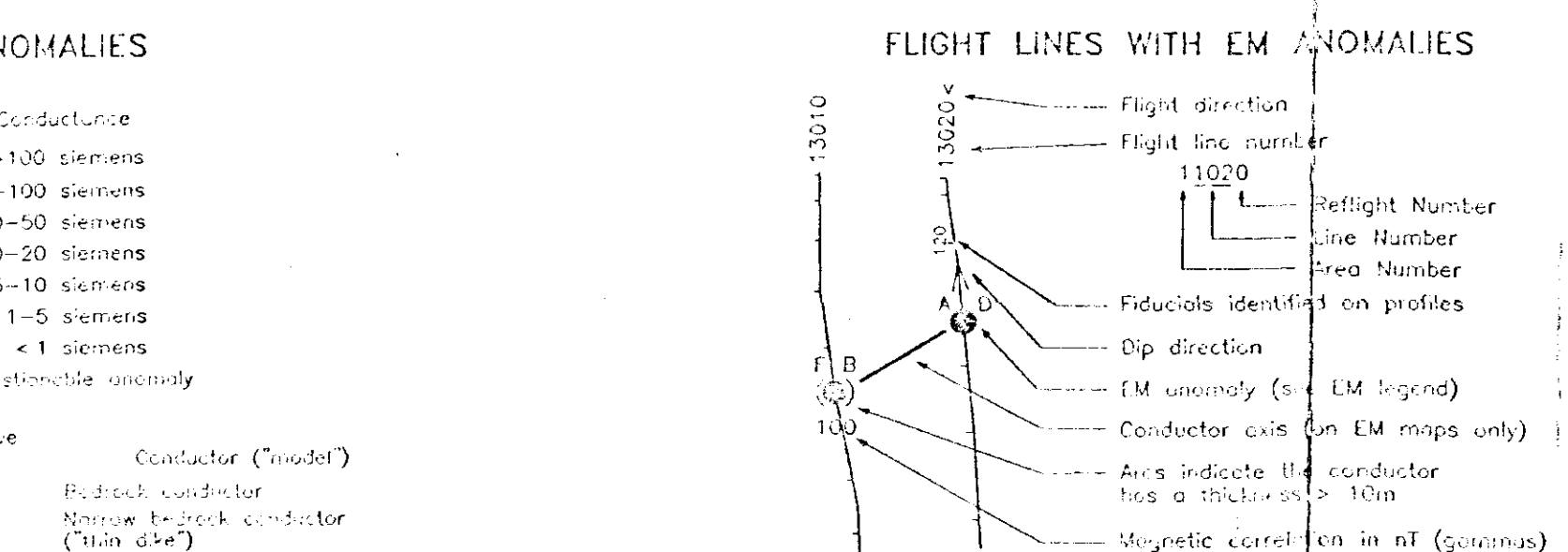


TECHNICAL SUMMARY

Map projection	U.T.M. Zone 18N
Data reduction grid interval	25 m (North-South)
Survey frequency	100 kHz
Receiver antenna	Vertical dipole
Data recording interval	0.1 second
Map projection / contoured	U.T.M. Zone 18N
Electromagnetic system	EM-31
Operator	CGG

ELECTROMAGNETIC ANOMALIES

Conductance	Resistivity
100 Siemens	10 Ohm-m
500 Siemens	2 Ohm-m
1000 Siemens	1 Ohm-m
2000 Siemens	0.5 Ohm-m
5000 Siemens	0.2 Ohm-m
10000 Siemens	0.1 Ohm-m
20000 Siemens	0.05 Ohm-m
50000 Siemens	0.02 Ohm-m
100000 Siemens	0.01 Ohm-m

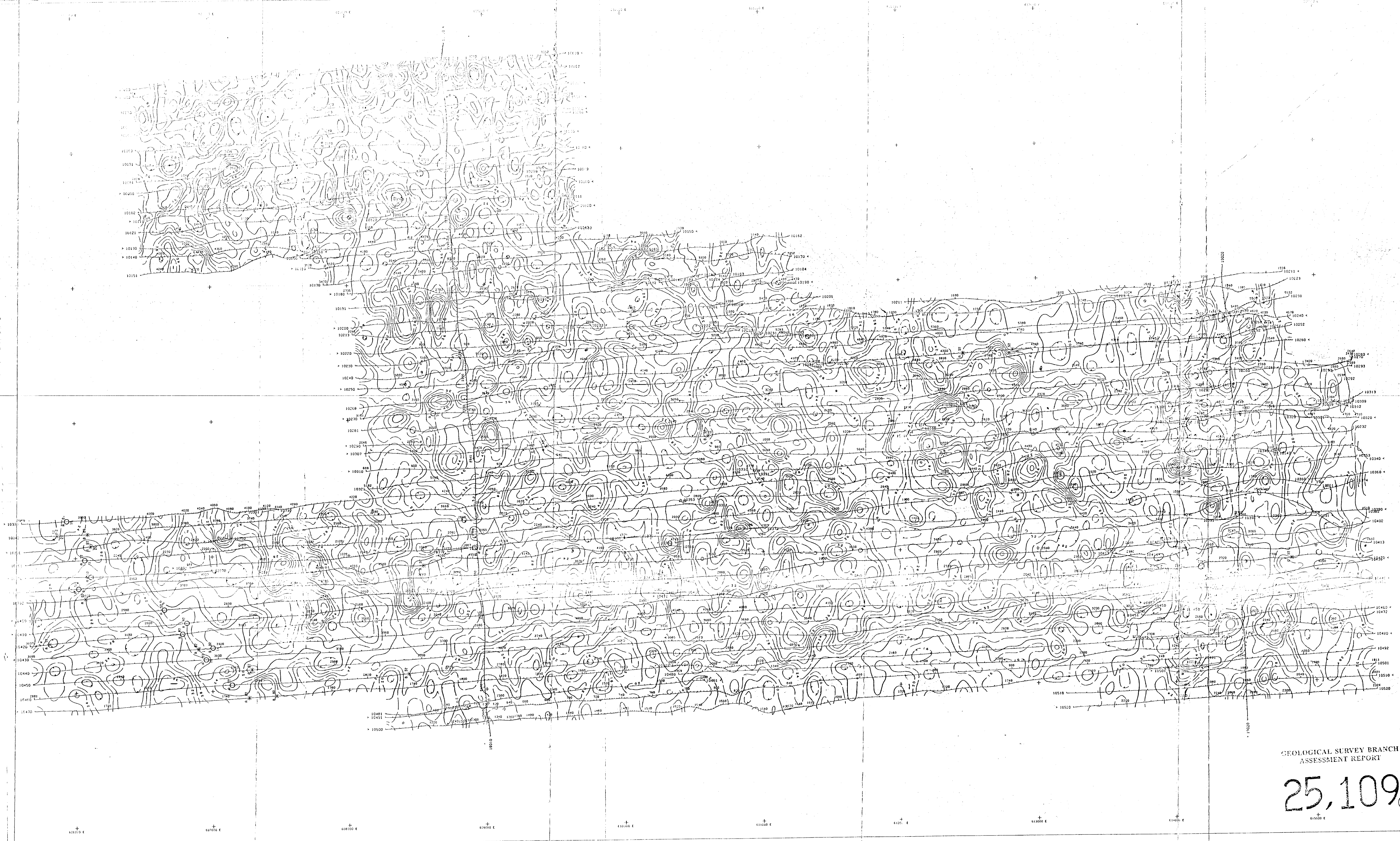


BIG B RESOURCES INC.
KOOTENAY RIVER AREA, BRITISH COLUMBIA

ELECTROMAGNETIC ANOMALIES

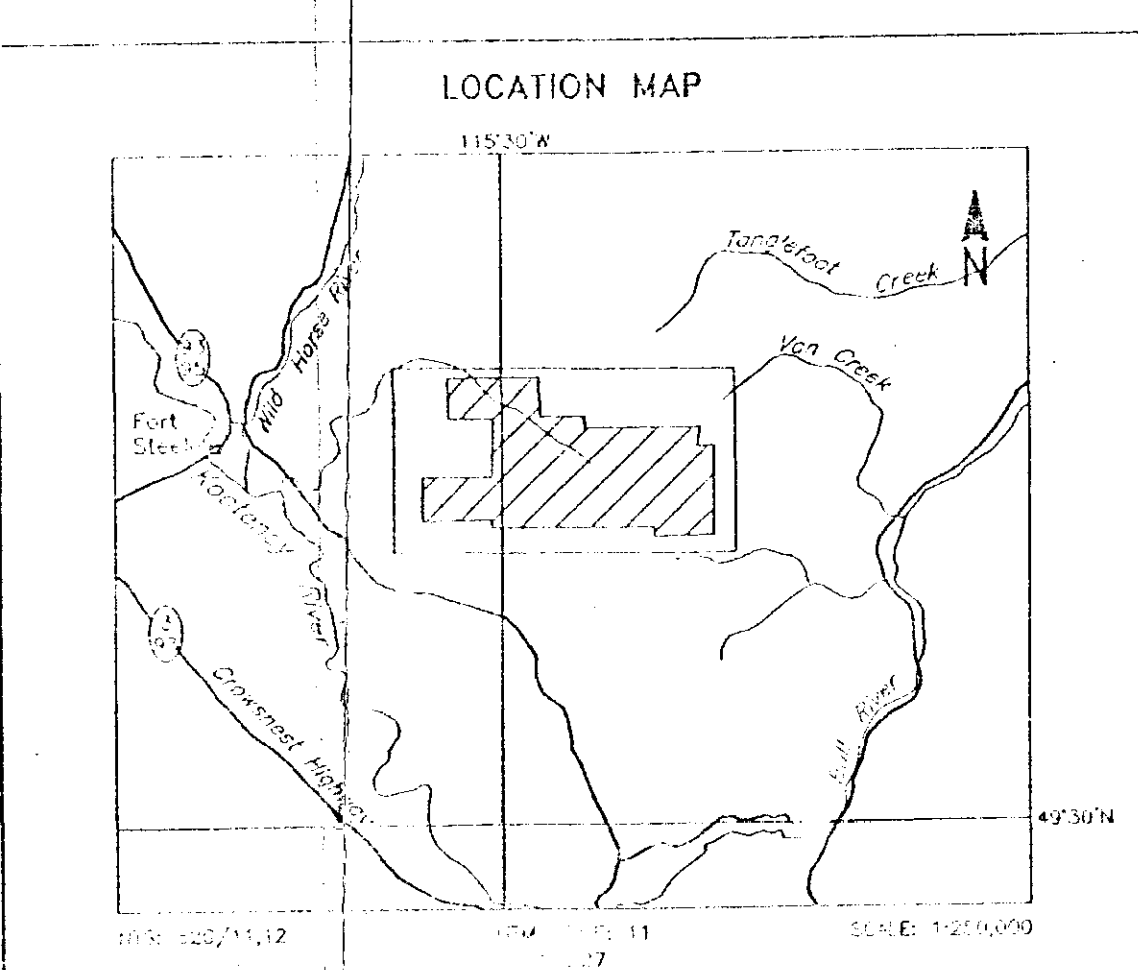
EMAP SURVEY	NIS 802/1112	DATE: OCTOBER, 1996	JOB: 1218	DESIGNER: D.A.
				SHEET: 1

DICHEM, A division of CGG Canada Ltd.



GEOLOGICAL SURVEY BRANCH
ASSESSMENT REPORT

25,109



TECHNICAL SUMMARY

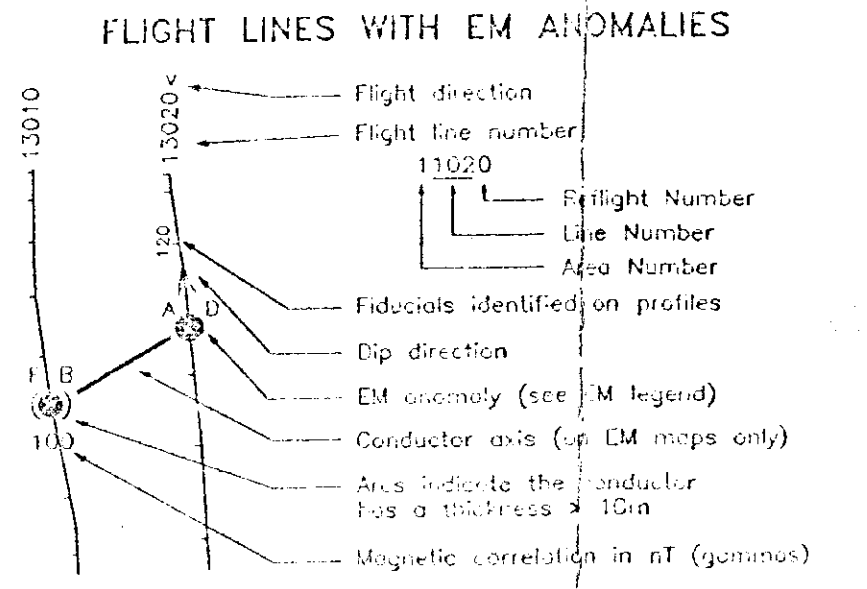
Navigation	Terrain differential GPS positioning
Data reduction grid interval	25 metres
Terrain elevation	Topographic, Spherometer 60 m
	Topographic, Spherometer 30 m
	Magnetometer 40 m
Data sampling interval	2 seconds
Magnetometer # / sensitivity	Geometrics / 0.01 nT
Electromagnetic system	Geometrics
Geometrics	0.020

Frequency	Coil Orientation
40 Hz	Vertical coil
2 Hz	Vertical coil
2 Hz	Horizontal coil
10 Hz	Horizontal coil
10 Hz	Horizontal coil
10 Hz	Horizontal coil

ELECTROMAGNETIC ANOMALIES

Code	Intensity
7	100 gamma
6	50-100 gamma
5	20-50 gamma
4	10-20 gamma
3	5-10 gamma
2	1-5 gamma
1	0-1 gamma
0	0 gamma anomaly

Intensity	Conductance
100	100 Siemens
50	50 Siemens
20	20 Siemens
10	10 Siemens
5	5 Siemens
2	2 Siemens
1	1 Siemens



CONTOUR INTERVALS

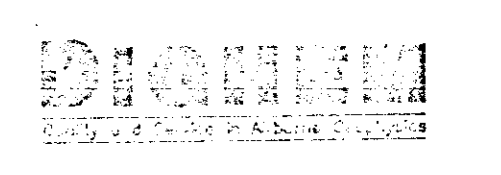
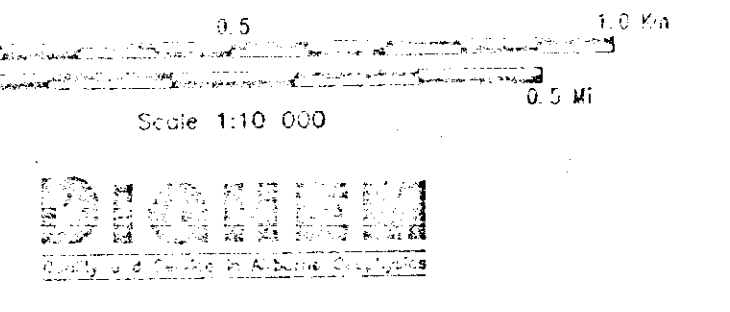
.....	100 cps
.....	20 cps
.....	4 cps
.....	2 cps
.....	Low

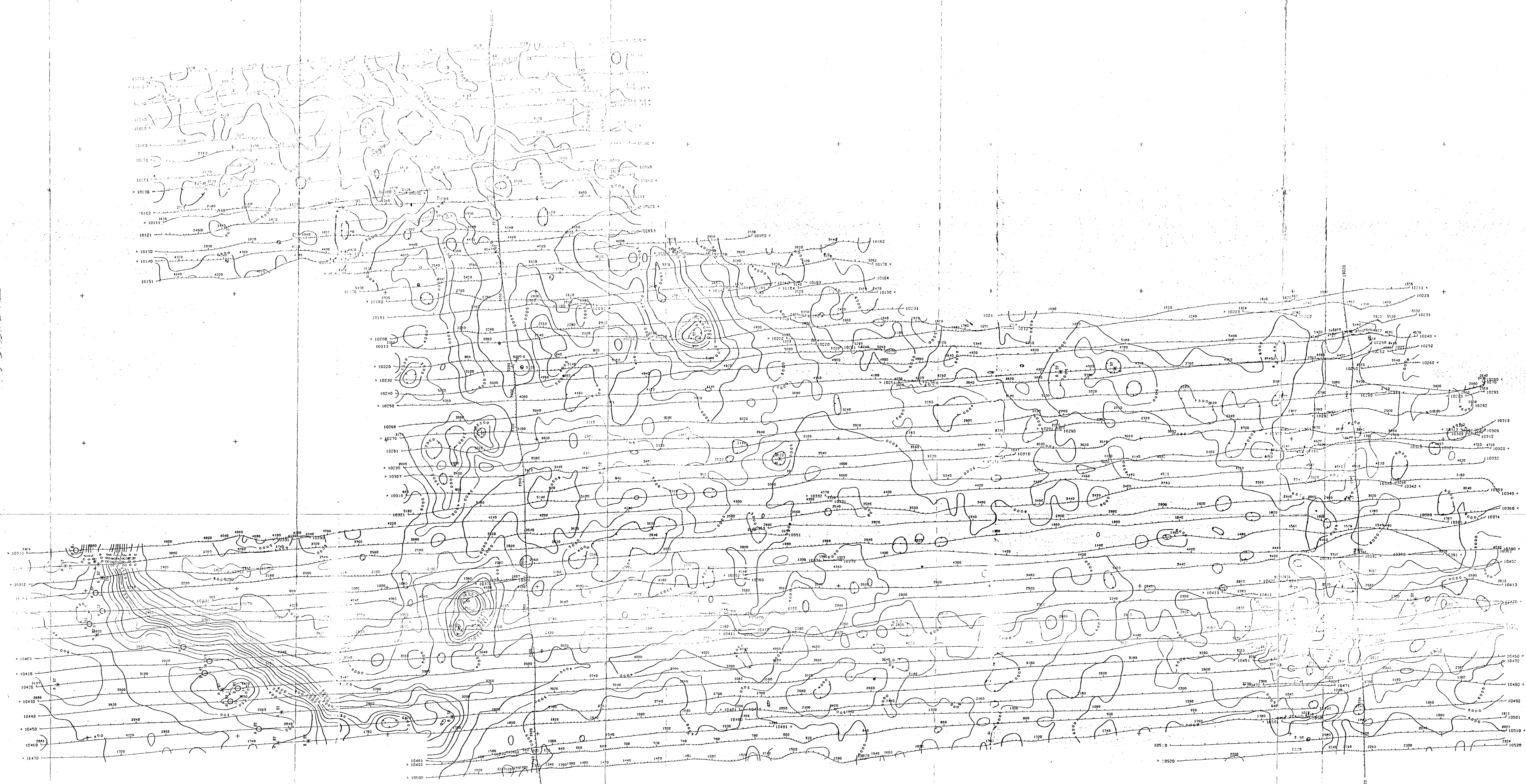
BIG B RESOURCES INC.
KOOTENAY RIVER AREA, BRITISH COLUMBIA

RADIOMETRICS THORIUM COUNTS

DATE: OCTOBER, 1978
JOB: 1258
SHEET: 1

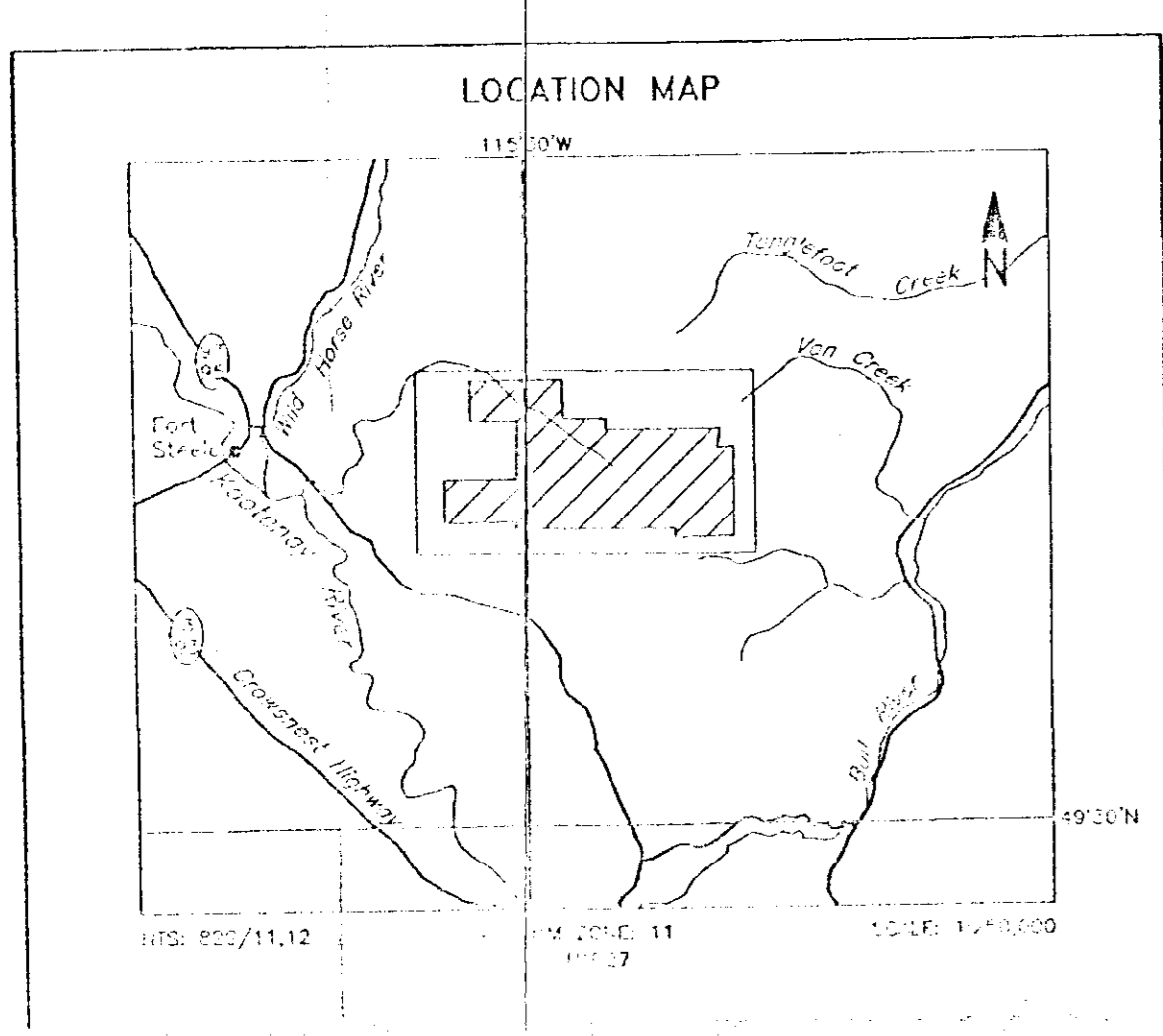
EICHEM, A division of CGC Canada Ltd.





GEOLOGICAL SURVEY BRANCH
ASSESSMENT REPORT

25,109^(S)

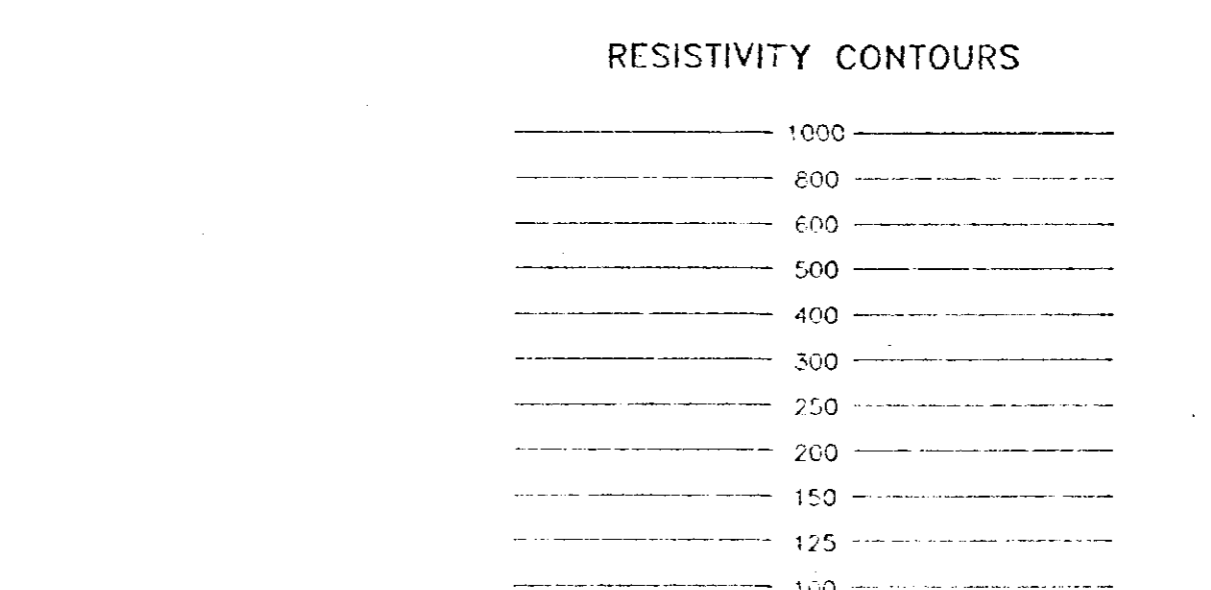
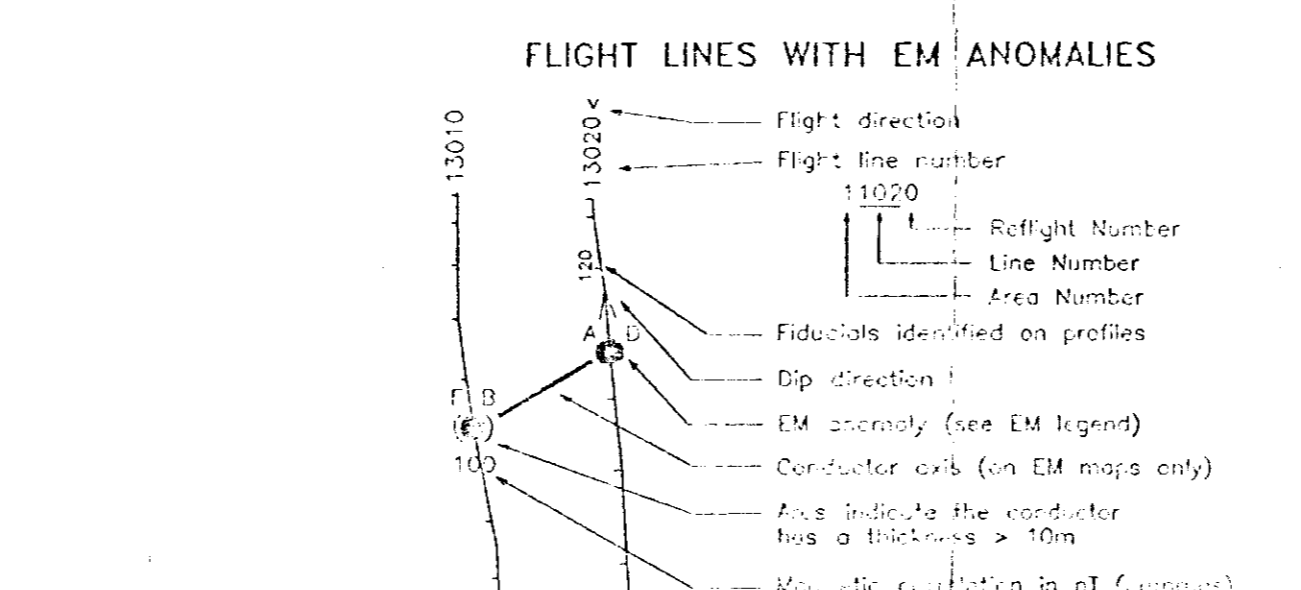


TECHNICAL SUMMARY

Navigation	Real differential GPS positioning
Data reduction	21 minutes
Filtering	Computer, 50 m
Data sampling	50 m
Magnetometer	50 m
System	50 m
System	50 m
System	50 m

ELECTROMAGNETIC ANOMALIES

Code	Priority	Continuity
1	1	1000 Ohms
2	2	1000 Ohms
3	3	1000 Ohms
4	4	1000 Ohms
5	5	1000 Ohms
6	6	1000 Ohms
7	7	1000 Ohms
8	8	1000 Ohms
9	9	1000 Ohms
10	10	1000 Ohms

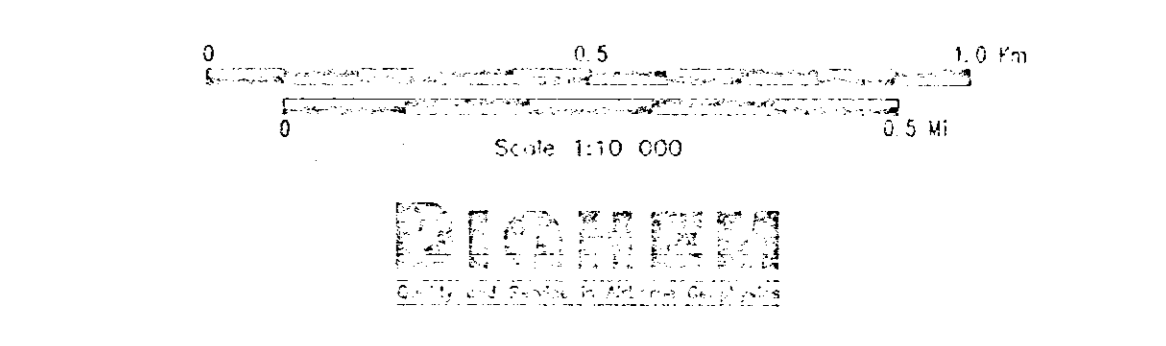


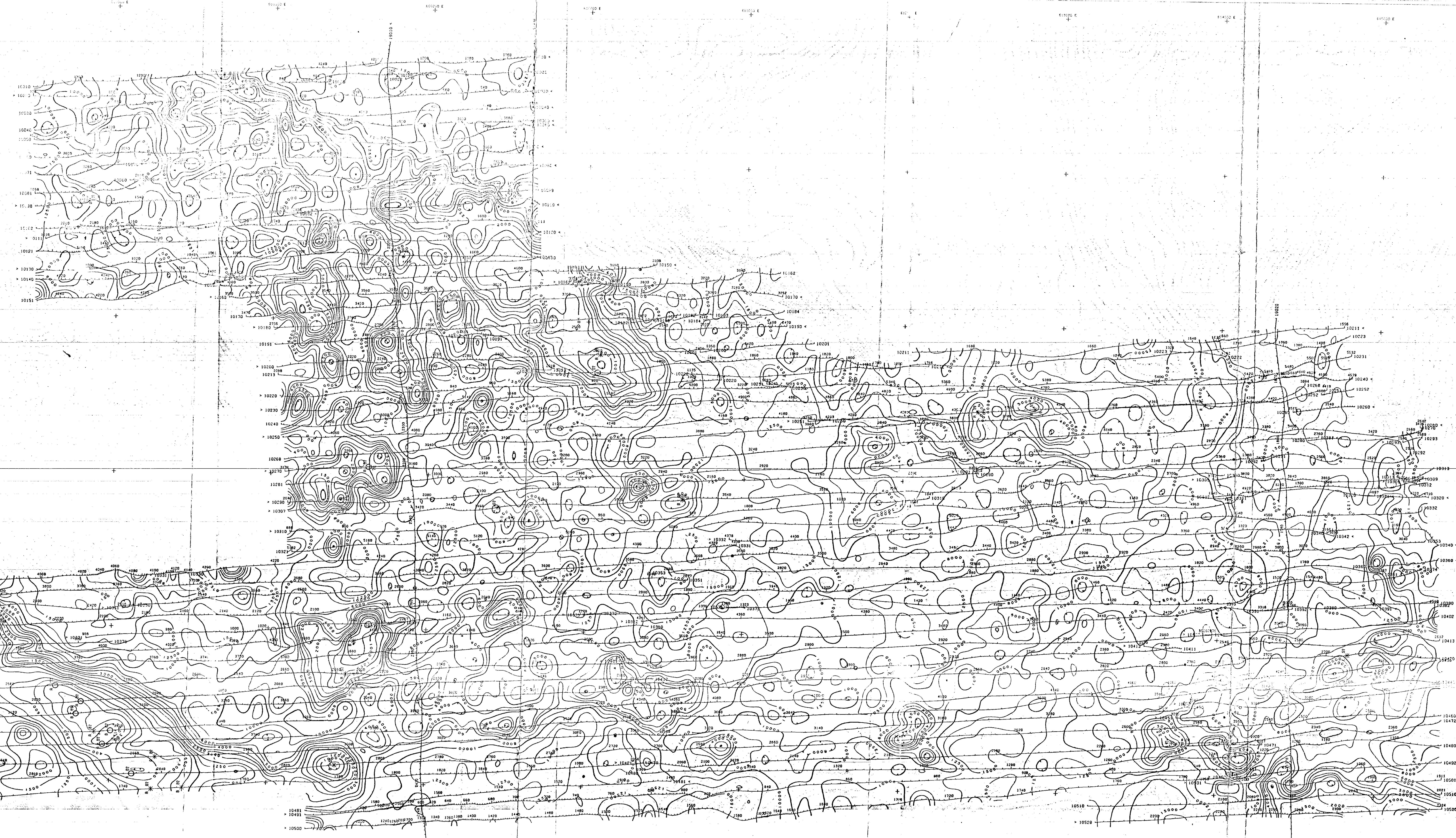
BIG B RESOURCES INC.
KOOTENAY RIVER AREA, BRITISH COLUMBIA

**APPARENT RESISTIVITY
7200 Hz COPLANAR**

DATE: 1998
JOB: 1258
SHEET: 1

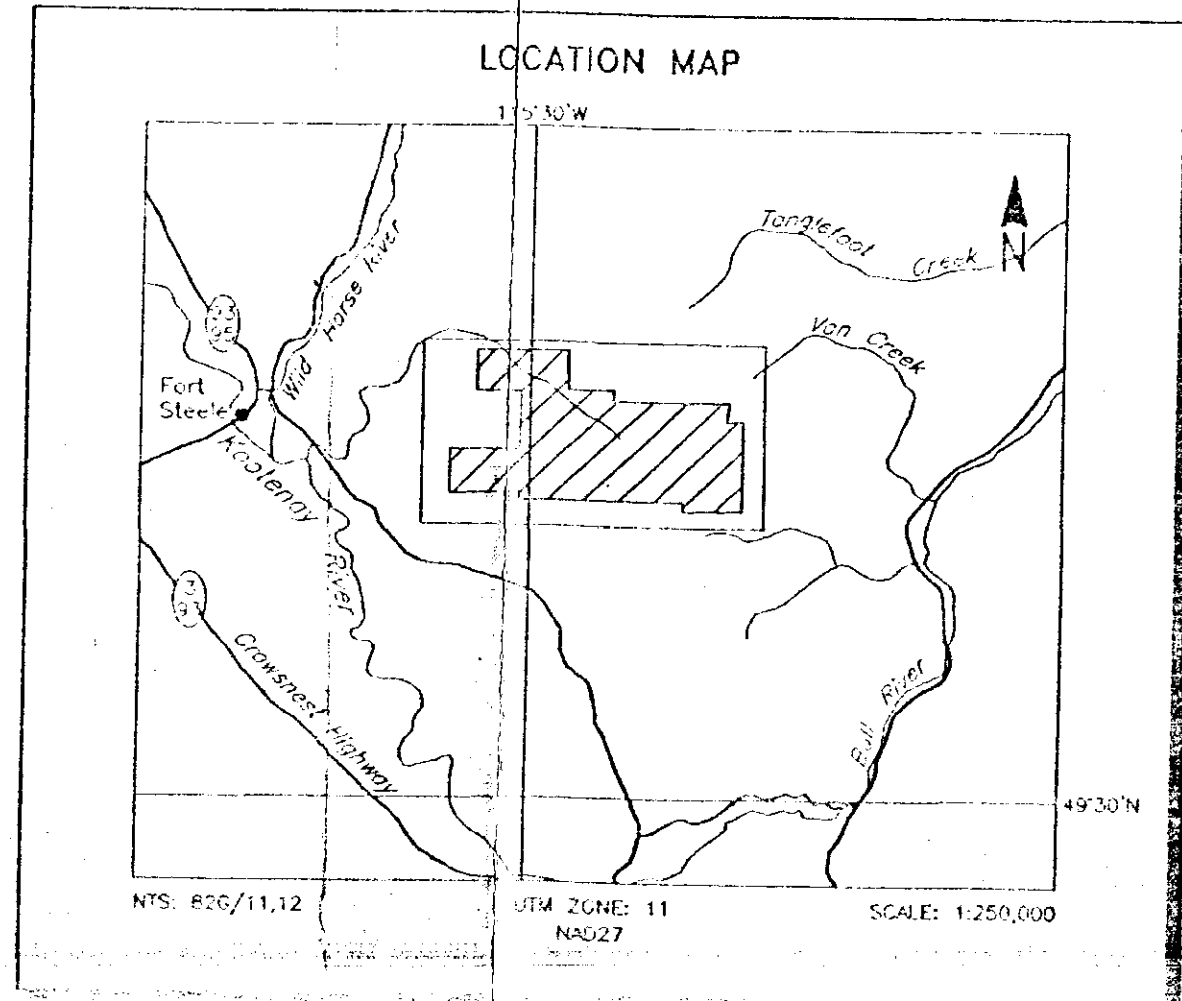
DICTIONARY, A Division of CCG Canada Ltd.





CEOLOGICAL SURVEY BRANCH
ASSESSMENT REPORT

25,109



TECHNICAL SUMMARY

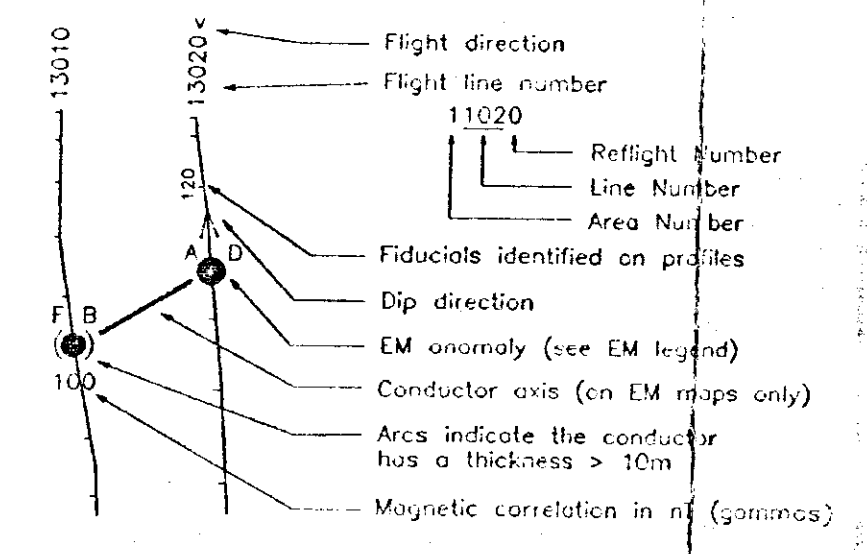
Navigation: Differential GPS positioning
 Data reduction grid interval: 25 metres
 Terrain clearance: 100 metres
 Data sampling interval: 0.1 second
 Magnetometer / sensitivity: Schlöter cesium / 0.01 nT
 Electromagnetic system: GEM-3
 Spectrometer: GR80

Frequency Sensitivity Coil Orientation
 200 Hz 0.3 ppm Vertical coplanar
 500 Hz 0.2 ppm Vertical coplanar
 1000 Hz 0.1 ppm Horizontal coplanar
 2000 Hz 0.2 ppm Horizontal coplanar
 5000 Hz 0.5 ppm Horizontal coplanar

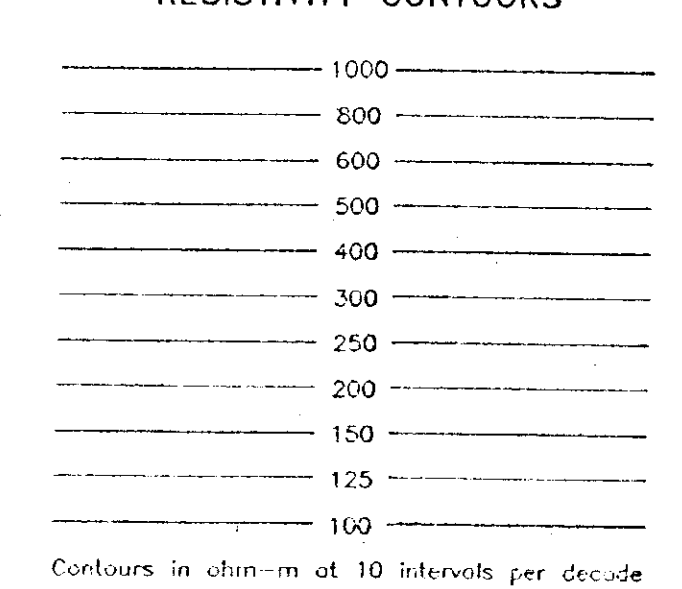
ELECTROMAGNETIC ANOMALIES

Grade	Amplitude	Interpretive Symbol
7	100 Siemens	Conductor (narrow)
6	10 Siemens	Bedrock conductor
5	10 Siemens	Conductor (wide)
4	10 Siemens	Conductor cover (horizontal)
3	10 Siemens	Conductor cover (vertical)
2	10 Siemens	Edge of broad conductor
1	10 Siemens	Edge of broad conductor

FLIGHT LINES WITH EM ANOMALIES



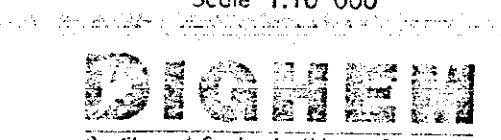
RESISTIVITY CONTOURS

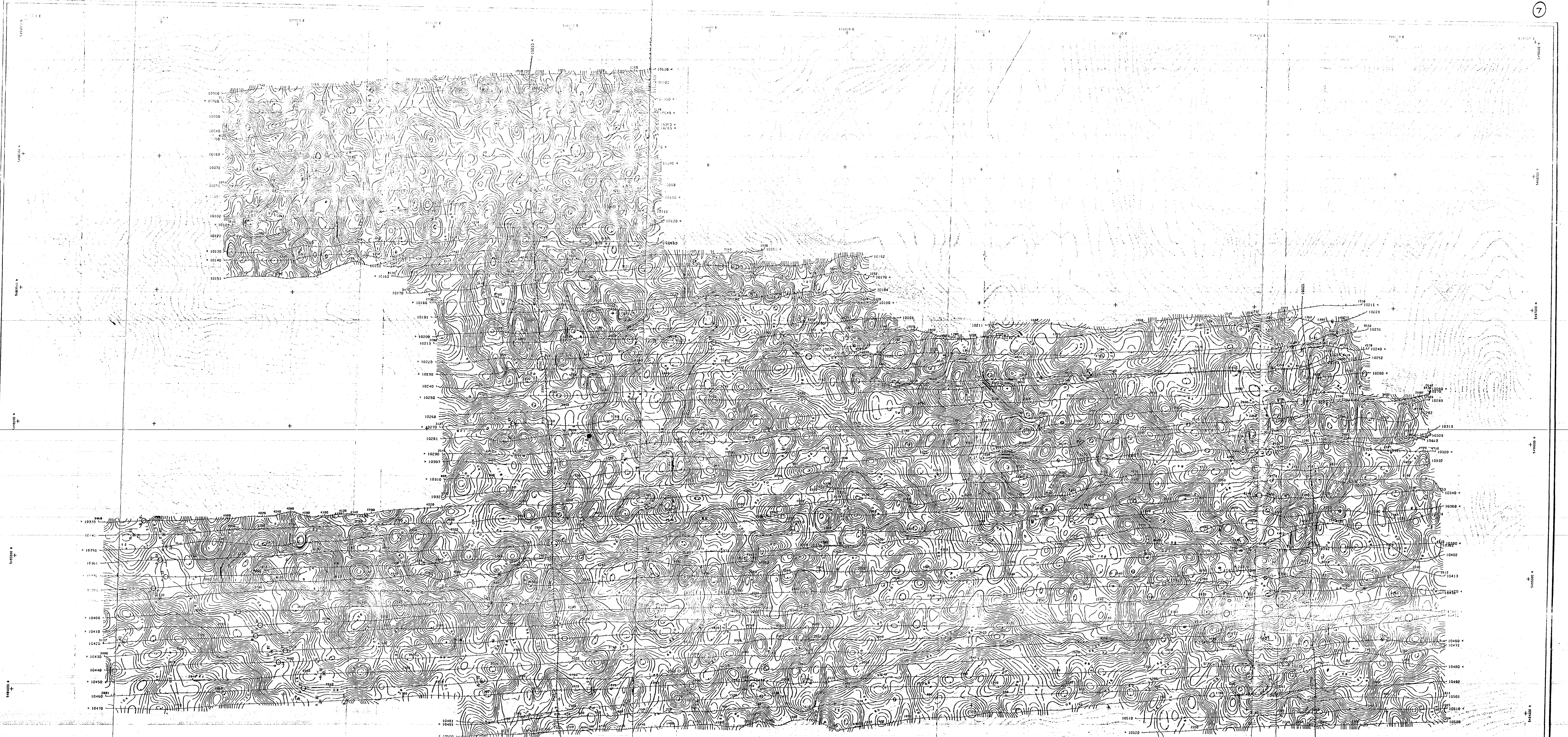


BIG B RESOURCES INC.
 KOOTENAY RIVER AREA, BRITISH COLUMBIA

**APPARENT RESISTIVITY
56,000 Hz COPLANAR**

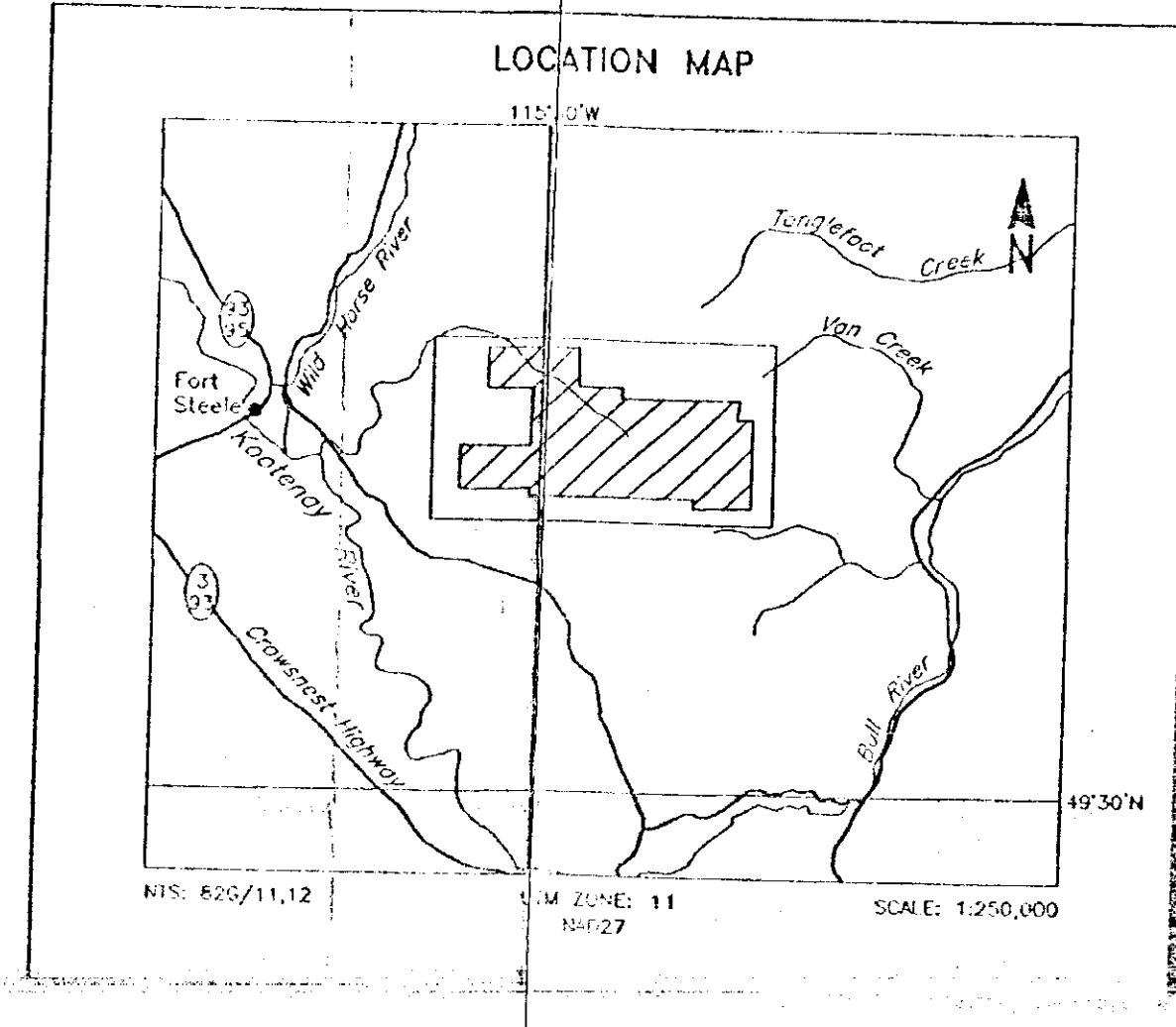
DIGHEM SURVEY NTS: 856/1132 GEOPHYSICIST: D.M.L.
 DATE: OCTOBER, 1998 JOB: 1258 SHEET: 1
 DIGHEM, A division of CCG Canada Ltd.





GEOLOGICAL SURVEY BRANCH
ASSESSMENT REPORT

25,109



TECHNICAL SUMMARY

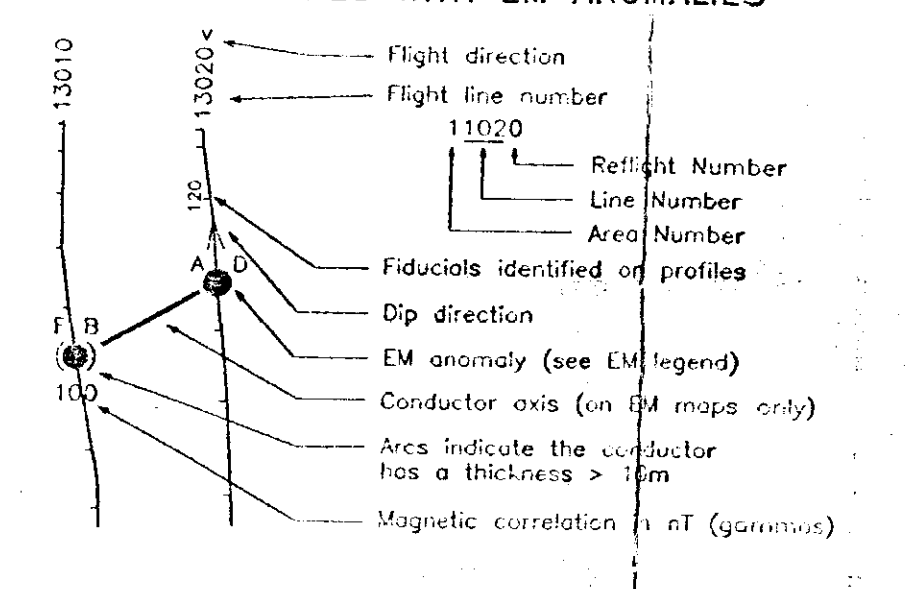
Navigation: Speed differential GPS positioning
 Time resolution: 1/10 second
 Terrain clearance: 15 m
 Data sampling interval: 0.1 seconds
 Magnetometer / sensor: Sintered system / 0.01 nT
 Electromagnetic system: DUALOR
 Spectrometer: CR200

Frequency	Sensitivity	Coil Orientation
500 Hz	0.1 ppm	Vertical coil
500 Hz	0.2 ppm	Vertical coil
500 Hz	0.1 ppm	Horizontal coil
750 Hz	0.2 ppm	Horizontal coil
5000 Hz	0.5 ppm	Horizontal coil

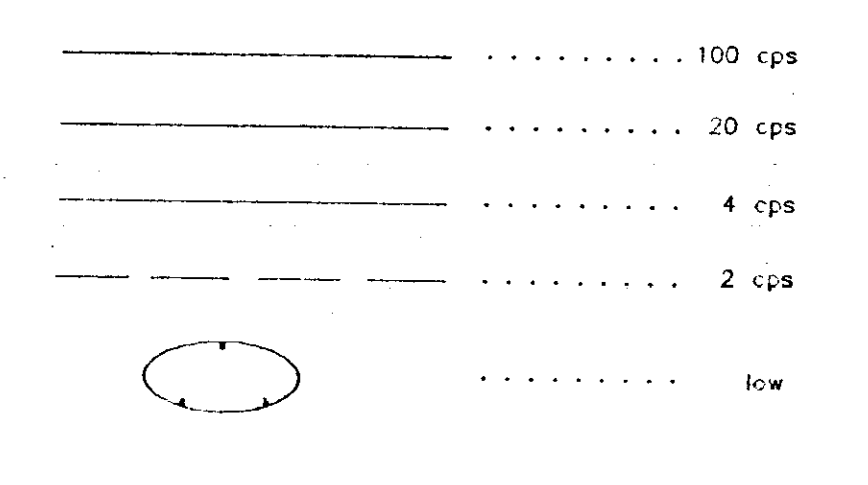
ELECTROMAGNETIC ANOMALIES

Code	Anomaly	Description
7	+	±10 Siemens
6	+	20-100 Siemens
5	+	20-50 Siemens
4	+	10-20 Siemens
3	+	5-10 Siemens
2	+	1-5 Siemens
1	+	1 ± 8 Siemens
0	+	Questionable anomaly

FLIGHT LINES WITH EM ANOMALIES



CONTOUR INTERVALS



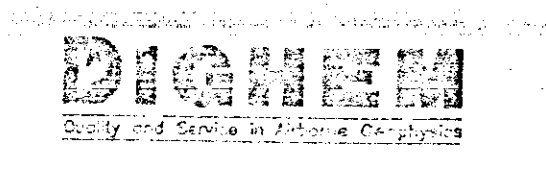
BIG B RESOURCES INC.
 KOOTENAY RIVER AREA, BRITISH COLUMBIA

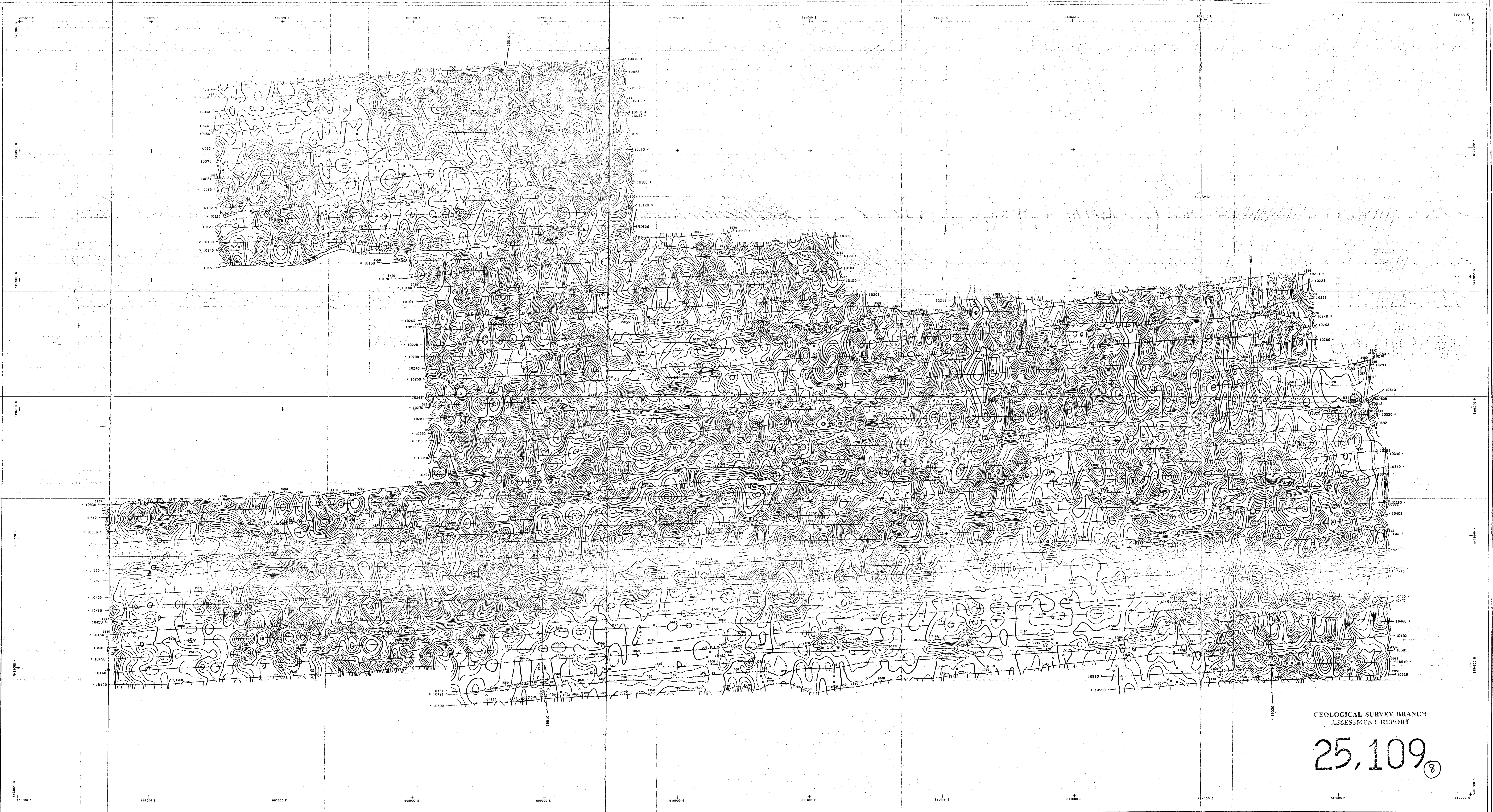
**RADIOMETRICS
 POTASSIUM COUNTS**

DIGHEM SURVEY: NIS 866/11.12
 DATE: OCTOBER, 1998
 JOB: 1258
 SHEET: 1

DIGHEM, A division of CGG Canada Ltd.

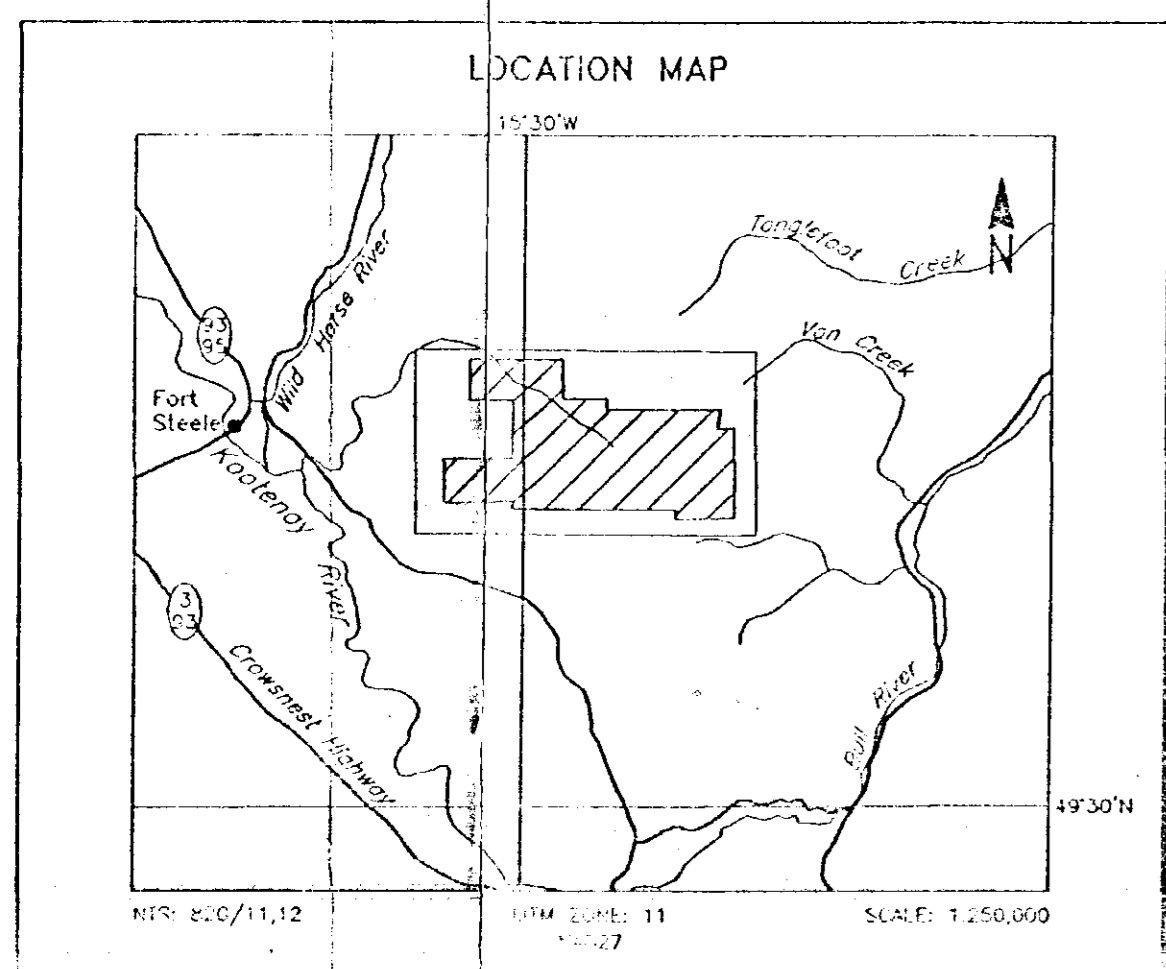
Scale 1:100,000





GEOLOGICAL SURVEY BRANCH
ASSESSMENT REPORT

25,109



TECHNICAL SUMMARY

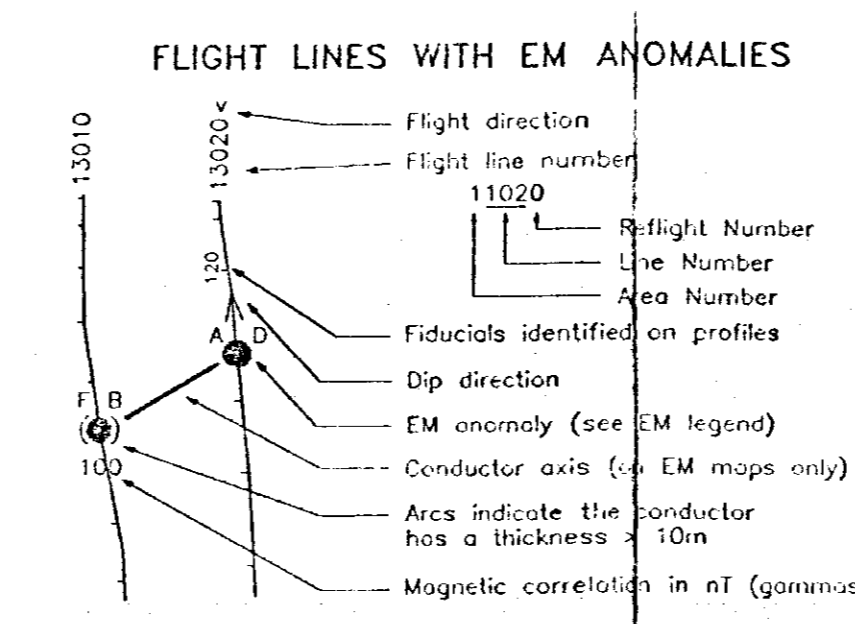
Map projection	Universal Transverse Mercator	Vertical datum	Canadian Geodetic Vertical Datum of 1984
Data reduction grid interval	25 metres	Helicopter, Spectrometer	40 m
Terrain clearance	Electromagnetic sensor	30 m	
Data sampling interval	0.1 second	Magnetometer	40 m
Magnetometer sensitivity	Schubert cesium / 0.01 nT	System	EMSEM
Electromagnetic system	EMSEM		
Spectrometer	GR20		

Frequency	Sensitivity	Coil Orientation
300 Hz	0.1 ppm	Vertical coplanar
500 Hz	0.2 ppm	Vertical coplanar
900 Hz	0.1 ppm	Horizontal coplanar
1200 Hz	0.2 ppm	Horizontal coplanar
5000 Hz	0.5 ppm	Horizontal coplanar

ELECTROMAGNETIC ANOMALIES

Anomaly	Conductance
1	1-100 Siemens
2	50-100 Siemens
3	20-50 Siemens
4	10-20 Siemens
5	5-10 Siemens
6	1-5 Siemens
7	0.1-1 Siemens
8	0.01-0.1 Siemens

Symbol	Interpretation
B	Subrock conductor
S	Source body conductor (thin die)
C	Conductive cover (horizontal thin sheet)
H	Block conductive rock unit, steep conductive overthrust, thick conductive cover (thin sheet)
E	Edge of block conductor
L	Edge of full space conductor, 2-D zone line, partial burial of pipe



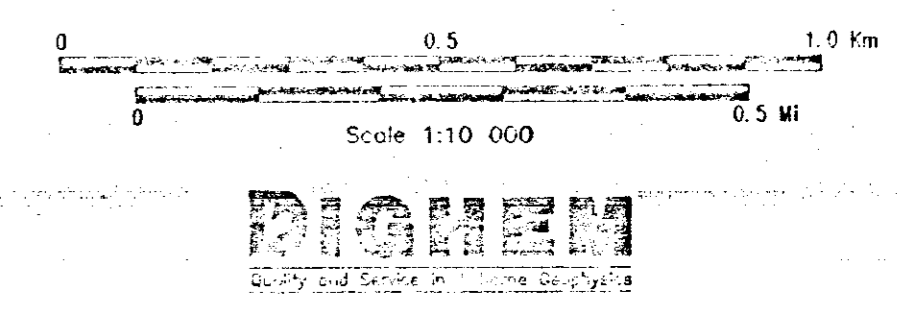
CALCULATED VERTICAL GRADIENT CONTOURS

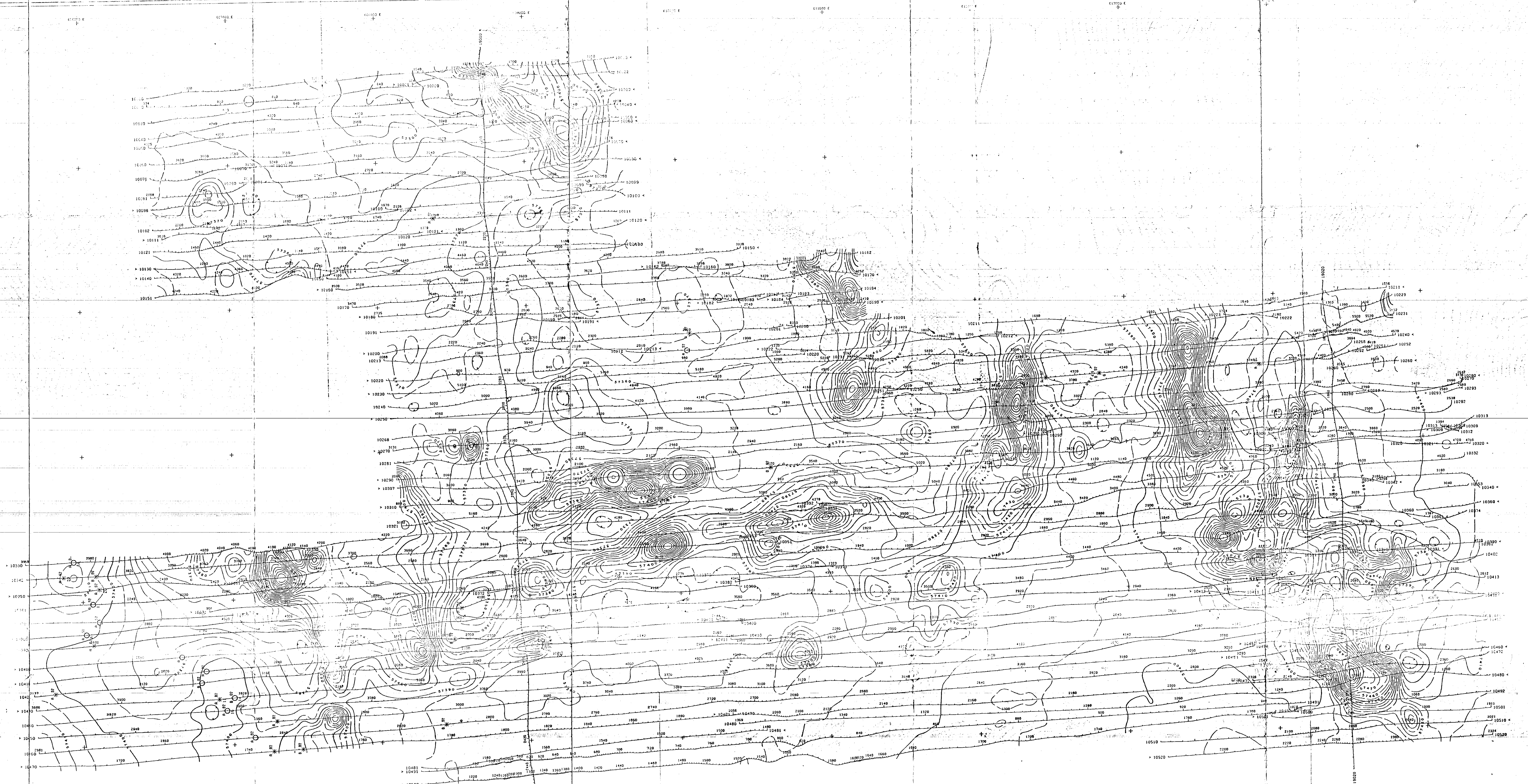
0.5 nT/metre
0.1 nT/metre
0.02 nT/metre
0.01 nT/metre

BIG B RESOURCES INC.
KOOTENAY RIVER AREA, BRITISH COLUMBIA

CALCULATED VERTICAL GRADIENT MAGNETICS

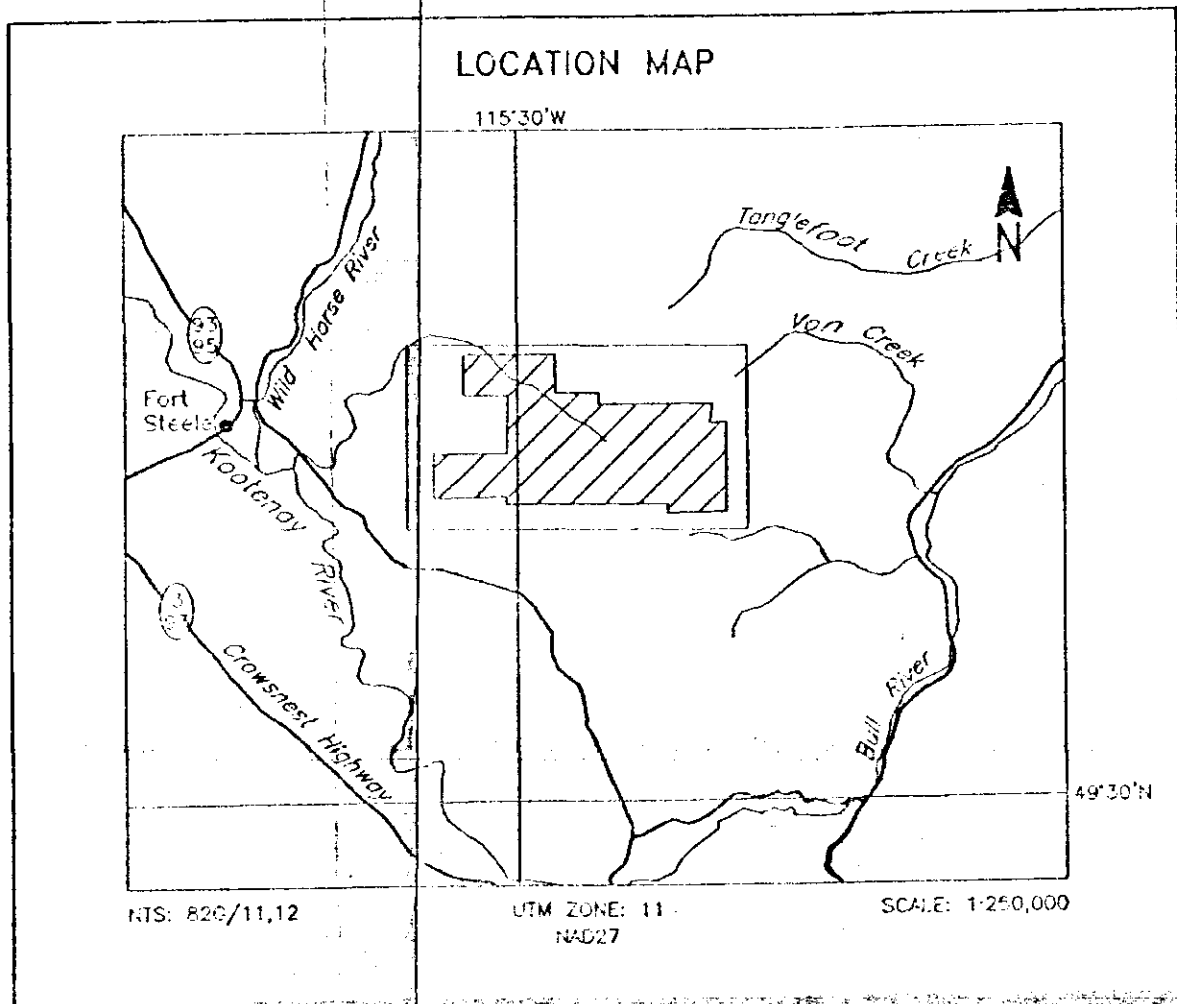
DIGHEM SURVEY	NIS: 860/1142	GEOPHYSICIST: D.A.A.
DATE: OCTOBER, 1998	JOB: 1258	SHEET: 1
DIGHEM, A division of CGG Canada Ltd.		





GEOLOGICAL SURVEY BRANCH
ASSESSMENT REPORT

25,109



TECHNICAL SUMMARY

Navigation Serial differential GPS positioning
 50 m reduction grid interval 25 metres
 Flight clearance Electromagnetic sensor 60 m
 Magnetometer 40 m
 Data sampling interval 0.1 second
 Magnetometer / sensitivity Schlöter vector / 0.01 nT
 Electromagnetic system DCS/EM
 Spectrometer EM62D

Frequency	Sensitivity	Coil Orientation
230 Hz	0.1 ppm	Vertical coplanar
1500 Hz	0.2 ppm	Vertical coplanar
800 Hz	0.1 ppm	Horizontal coplanar
10 Hz	0.2 ppm	Horizontal coplanar
1500 Hz	0.5 ppm	Horizontal coplanar

ELECTROMAGNETIC ANOMALIES

Grade	Anomaly	Interpretation
7	●	Conductor (model)
6	○	Backscatter conductor (thin sheet)
5	○	Narrow sheet conductor (thin sheet)
4	○	Conductive cover (horizontal thin sheet)
3	○	Broad conductive rock unit, deep conductive weathering
2	○	Edge of broad conductor (edge of roof apron)
1	○	Culture, e.g. power line, metal building or fence
	*	Questionable anomaly

Depth is greater than:
 10 m
 20 m
 50 m

FLIGHT LINES WITH EM ANOMALIES

Flight direction
 Flight line number
 Retflight Number
 Line Number
 Area Number
 Fiducially identified on profiles
 Dip direction
 EM anomaly (see EM legend)
 Conductor axis (on EM maps only)
 Arcs indicate the conductor has a thickness > 10m
 Magnet correlation in nT (ppm)

TOTAL FIELD MAGNETIC CONTOURS

250 nT
 50 nT
 10 nT
 5 nT
 magnetic low

Magnetic inclination within the survey area: 73 degrees N
 Magnetic declination within the survey area: 19 degrees E

BIG B RESOURCES INC.
 KOOTENAY RIVER AREA, BRITISH COLUMBIA

TOTAL FIELD MAGNETICS

DIGHEM SURVEY	NIS: 866/11.12	GEOFFREY: D.P.A.
DATE: OCTOBER, 1996	JOB: 1258	SHEET: 1
DIGHEM, A division of CCG Canada Ltd.		

Scale 1:10 000