

**Assessment Report**  
**Geophysical Self-Potential Survey**  
**JOAN Placer Claim # 306686**

92150  
53' 00"  
100' 00"

**RECEIVED**  
GOVERNMENT AGENT  
QUESNEL  
SEP 15 1997  
NOT AN OFFICIAL RECEIPT

MINING SURVEY BRANCH  
ASSESSMENT REPORT

25,137

**Assessment Report**  
**Geophysical Self-Potential Survey**  
**JOAN Placer Claim # 306686**

**Property**

The JOAN Placer Claim is in the Cariboo District, Quesnel Mining Division, British Columbia. The claim is located on Slough Creek, 1.3 km west of the West end of Jack of clubs Lake, at 592000 m East, 5881500 m North, NTS 93H4. Access is south from Highway 26 on a logging road for 1 km, hence 50 m west to the initial post.

**Program**

The program was designed to test for carbonaceous horizons within the sedimentary sequence that underlies the property. The soft carbonaceous rocks erode more readily than the surrounding phyllites and may form incised channel ways that could host placer gold. Further, the carbonaceous component acts as an electrochemical cell which enhances the deposition of gold from mobile ground water.

**Method**

The self potential geophysical technique is an efficient method for detecting carbonaceous sediments below overburden cover. A survey was run over the eastern half of the Joan Placer Claim from June 29, 1997 to July 3, 1997. This is the area of the claim where topography is best suited to a Self Potential Survey.

Readings were taken at 5 metre intervals along pre-existing flagged grid lines. The "long-wise" method was used with the maximum distance between the base station and the reading station being 100 m. The instrument used was a modified Sharpe V.P.-6.

## **Results**

The self potential readings are plotted in millivolts on the accompanying survey plan. Readings have been corrected for variations in base station voltage potentials. Readings of 80 milivolts or higher indicate possible carbonaceous material in the sub-surface bedrock and those of 100 milivolts and higher, probable carbonaceous material in the sub-surface bedrock. The results define high priority areas for future testing.

Signed

A handwritten signature in black ink, appearing to read "W. Don Sutherland". The signature is written in a cursive, flowing style.

W. Don Sutherland  
Geological Engineer

July 7, 1997

**Expenditures:**

Labour:

Instrument Operator 5 days x 200/day	1,000.00
W. D. Sutherland	
Cochrane, Alberta	

Field Assistant 5 days x 100/day	500.00
J. H. Sutherland	
Cochrane, Alberta	

Field Living:

10 man days x 40/day	400.00
Report and map preparation	200.00

Travel:

4x4 pickup truck 1 week x230	<u>230.00</u>
------------------------------	---------------

Total	\$2,330.00
-------	------------

Dates on which work performed:

June 23, 1997 to July 3, 1997 inclusive.

## Statement of Qualifications

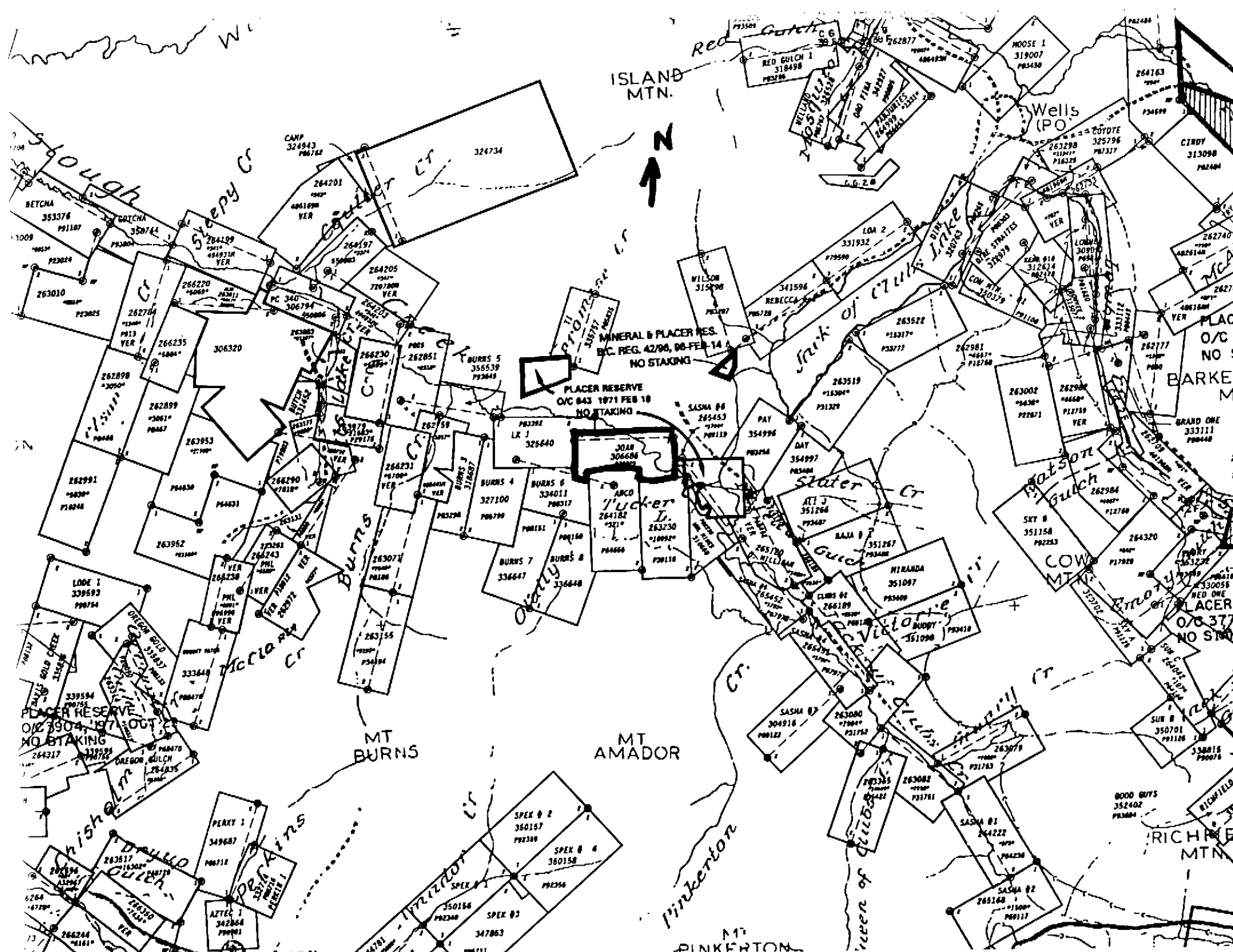
I, W. Don Sutherland of Glenbow Road, R.R. #2 Cochrane, Alberta hereby certify:

1. That I am a graduate engineer from the University of Toronto.
2. That I hold the degree of Bachelor of Applied Science (BASc) in Mining Geology.
3. That my university training included the study of geophysics.
4. That my profession is that of Geological Engineer and I have practiced my profession continuously for forty-eight years.
5. That I am experienced in the operation of self potential geophysical techniques and results.
6. That I personally conducted the survey on which this report is based.

Signed:

A handwritten signature in black ink, appearing to read "W. Don Sutherland". The signature is written in a cursive, flowing style.

W. Don Sutherland, BASc  
Geological Engineer



ISLAND MTN.



Wells (PO)

MINERAL & PLACER RES.  
B.C. REG. 4276, 88-FEB-14  
NO STAKING

PLACER RESERVE  
OVC 843 1971 FEB 10  
NO STAKING

JOAN TUCKER  
306686

ARC  
Tucker  
264182  
263230  
10092  
P4466  
P9118

BETCHA  
35376  
P91107

263010  
P23025

262898  
3061  
P0448

262991  
3030  
P10046

LODE 1  
339693  
P90754

PLACER RESERVE  
OVC 3904 1971 OCT 2  
NO STAKING  
264317

PERKY 1  
349667  
P06712

266244  
4161

266220  
3069  
P03011

262899  
3061  
P0467

263952  
P11044

339594  
P07152

264317

263517  
16302  
P00719

266244  
4161

CAMP  
324943  
P06762

264201  
324734

264197  
P03002

266230  
P03006

266231  
P03007

263077  
P01004

263155  
P04104

263517  
16302  
P00719

266244  
4161

264205  
306780  
VER

264205  
306780  
VER

266230  
P03006

266231  
P03007

263077  
P01004

263155  
P04104

263517  
16302  
P00719

266244  
4161

266244  
4161

BURNS 5  
356539  
P93448

BURNS 4  
327100  
P06790

BURNS 7  
336647

BURNS 8  
336648

BURNS 8  
336648

BURNS 8  
336648

BURNS 8  
336648

ARC  
Tucker  
264182  
263230  
10092  
P4466  
P9118

ARC  
Tucker  
264182  
263230  
10092  
P4466  
P9118

ARC  
Tucker  
264182  
263230  
10092  
P4466  
P9118

ARC  
Tucker  
264182  
263230  
10092  
P4466  
P9118

ARC  
Tucker  
264182  
263230  
10092  
P4466  
P9118

ARC  
Tucker  
264182  
263230  
10092  
P4466  
P9118

ARC  
Tucker  
264182  
263230  
10092  
P4466  
P9118

PLACER RESERVE  
OVC 843 1971 FEB 10  
NO STAKING

PLACER RESERVE  
OVC 843 1971 FEB 10  
NO STAKING

PLACER RESERVE  
OVC 843 1971 FEB 10  
NO STAKING

PLACER RESERVE  
OVC 843 1971 FEB 10  
NO STAKING

PLACER RESERVE  
OVC 843 1971 FEB 10  
NO STAKING

PLACER RESERVE  
OVC 843 1971 FEB 10  
NO STAKING

PLACER RESERVE  
OVC 843 1971 FEB 10  
NO STAKING

WILSON  
315496  
P03197

WILSON  
315496  
P03197

WILSON  
315496  
P03197

WILSON  
315496  
P03197

WILSON  
315496  
P03197

WILSON  
315496  
P03197

WILSON  
315496  
P03197

REBECCA  
341596  
P05728

REBECCA  
341596  
P05728

REBECCA  
341596  
P05728

REBECCA  
341596  
P05728

REBECCA  
341596  
P05728

REBECCA  
341596  
P05728

REBECCA  
341596  
P05728

PAY  
354996  
P02454

PAY  
354996  
P02454

PAY  
354996  
P02454

PAY  
354996  
P02454

PAY  
354996  
P02454

PAY  
354996  
P02454

PAY  
354996  
P02454

DAY  
354997  
P03484

DAY  
354997  
P03484

DAY  
354997  
P03484

DAY  
354997  
P03484

DAY  
354997  
P03484

DAY  
354997  
P03484

DAY  
354997  
P03484

ALL J  
351264  
P03487

ALL J  
351264  
P03487

ALL J  
351264  
P03487

ALL J  
351264  
P03487

ALL J  
351264  
P03487

ALL J  
351264  
P03487

ALL J  
351264  
P03487

BAJA B  
351267  
P03488

BAJA B  
351267  
P03488

BAJA B  
351267  
P03488

BAJA B  
351267  
P03488

BAJA B  
351267  
P03488

BAJA B  
351267  
P03488

BAJA B  
351267  
P03488

HIRANDA  
351007  
P03489

HIRANDA  
351007  
P03489

HIRANDA  
351007  
P03489

HIRANDA  
351007  
P03489

HIRANDA  
351007  
P03489

HIRANDA  
351007  
P03489

HIRANDA  
351007  
P03489

BUDDY  
351090  
P03418

BUDDY  
351090  
P03418

BUDDY  
351090  
P03418

BUDDY  
351090  
P03418

BUDDY  
351090  
P03418

BUDDY  
351090  
P03418

BUDDY  
351090  
P03418

SUN B  
350701  
P01126

SUN B  
350701  
P01126

SUN B  
350701  
P01126

SUN B  
350701  
P01126

SUN B  
350701  
P01126

SUN B  
350701  
P01126

SUN B  
350701  
P01126

GOOD GUYS  
352402  
P03604

GOOD GUYS  
352402  
P03604

GOOD GUYS  
352402  
P03604

GOOD GUYS  
352402  
P03604

GOOD GUYS  
352402  
P03604

GOOD GUYS  
352402  
P03604

GOOD GUYS  
352402  
P03604

338816  
P00076

338816  
P00076

338816  
P00076

338816  
P00076

338816  
P00076

338816  
P00076

338816  
P00076

338816  
P00076

338816  
P00076

338816  
P00076

338816  
P00076

338816  
P00076

338816  
P00076

338816  
P00076

338816  
P00076

338816  
P00076

338816  
P00076

338816  
P00076

338816  
P00076

338816  
P00076

338816  
P00076

338816  
P00076

338816  
P00076

338816  
P00076

338816  
P00076

338816  
P00076

338816  
P00076

338816  
P00076

338816  
P00076

338816  
P00076

338816  
P00076

338816  
P00076

338816  
P00076

338816  
P00076

338816  
P00076

338816  
P00076

338816  
P00076

338816  
P00076

338816  
P00076

338816  
P00076

338816  
P00076

338816  
P00076

338816  
P00076

338816  
P00076

338816  
P00076

338816  
P00076

338816  
P00076

338816  
P00076

338816  
P00076

338816  
P00076

338816  
P00076

338816  
P00076

338816  
P00076

338816  
P00076

338816  
P00076

338816  
P00076

338816  
P00076

338816  
P00076

338816  
P00076

338816  
P00076

338816  
P00076

338816  
P00076

338816  
P00076

338816  
P00076

338816  
P00076

338816  
P00076

338816  
P00076

338816  
P00076

338816  
P00076

338816  
P00076

338816  
P00076

338816  
P00076

338816  
P00076

338816  
P00076

338816  
P00076

338816  
P00076

338816  
P00076

338816  
P00076

338816  
P00076

338816  
P00076

338816  
P00076

338816  
P00076

338816  
P00076

338816  
P00076

338816  
P00076

338816  
P00076

338816  
P00076

338816  
P00076

338816  
P00076

338816  
P00076

338816  
P00076

338816  
P00076

338816  
P00076

338816  
P00076

338816  
P00076

338816  
P00076

338816  
P00076

338816  
P00076

338816  
P00076

338816  
P00076

338816  
P00076

338816  
P00076

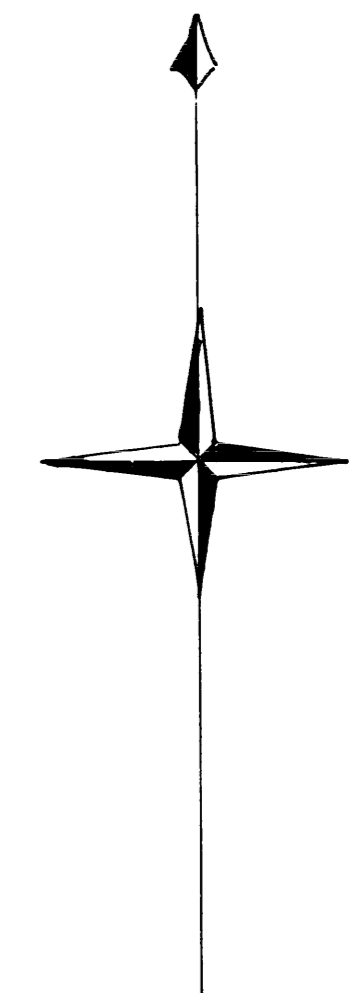
338816  
P00076

338816  
P00076

338816  
P00076

338816  
P00076

338816  
P00076

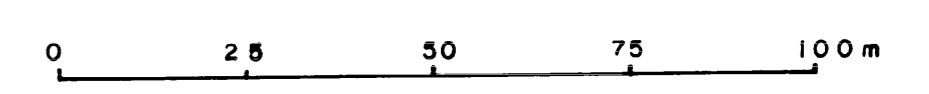


GEOLOGICAL SURVEY BRANCH  
ASSESSMENT REPORT

**25,137**  
SELF POTENTIAL SURVEY

JOAN CLAIM

JULY 1997



*W. Ben Smithland*