

PERCUSSION DRILLING REPORT

on the

DOMINIC MINERAL CLAIMS

Kamloops Mining Division
British Columbia

N.T.S. 092I/10E
Latitude 50° 35' N
Longitude 120° 43' W

for

Mr. Charles Boitard
2245 West 13th Avenue
Vancouver, B.C.
V6K 2S4

by

P. REYNOLDS, B.Sc., P.Geo.
SEPTEMBER 8, 1997

**GEOLOGICAL SURVEY BRANCH
ASSESSMENT REPORT**

25,141

TABLE OF CONTENTS

1.	SUMMARY	2
2.	INTRODUCTION	2
3.	LOCATION, ACCESS AND PHYSIOGRAPHY	2
4.	CLAIM STATUS	3
5.	HISTORY	3
6.	GEOLOGY	4
7.	PERCUSSION DRILLING	4
8.	CONCLUSION AND RECOMMENDATIONS	5
9.	REFERENCES	5
10.	CERTIFICATE	6

LIST OF FIGURES

FIGURE 1	LOCATION MAP	FOLLOWS PAGE 2
FIGURE 2	CLAIM MAP	FOLLOWS PAGE 3
FIGURE 3	REGIONAL GEOLOGY	FOLLOWS PAGE 4
FIGURE 4	DRILL PLAN	BACK POCKET

APPENDICES

APPENDIX I	STATEMENT OF COSTS
APPENDIX II	DIAMOND DRILL LOG
APPENDIX III	ANALYTICAL RESULTS

1. SUMMARY

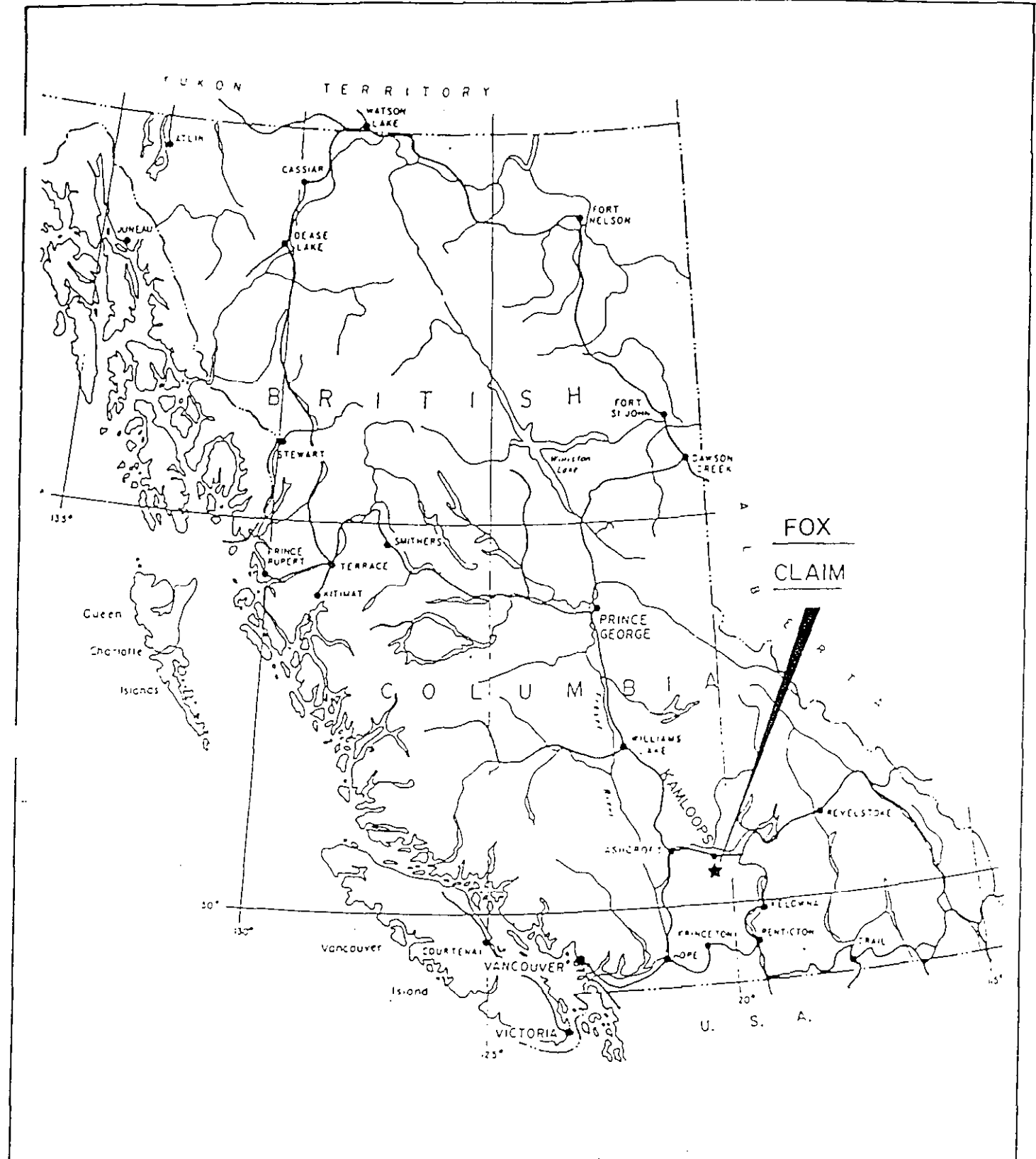
- 1.1 The Dominic property consists of six mineral claims totaling 54 units. The claims are located approximately 30 kilometres west of Kamloops, B.C. The claim is accessible by good gravel roads from Savona.
- 1.2 The property is underlain by andesites of the Nicola Volcanics.
- 1.3 One percussion drill hole was completed in 1997 to test for copper mineralization. No economic amounts of copper mineralization were encountered.

2. INTRODUCTION

- 2.1 This report has been prepared at the request of Mr. Charles Boitard to satisfy assessment requirements.
- 2.2 The information for the following report was obtained from sources cited under references and from the authors drill log of PDH 97-1. The drilling program was carried out by Mr. Charles Boitard between June 2 and June 5, 1997.
- 2.3 The registered owner of the Dominic claims is Mr. Charles Boitard. The claims lie approximately 30 kilometres west of Kamloops, B.C. This area is known for its porphyry copper and molybdenum production from both volcanic and intrusive host rocks. Significant gold and silver has been recovered from these deposits.

3. LOCATION, ACCESS AND PHYSIOGRAPHY

- 3.1 The Dominic property is located on the Thompson Plateau approximately 30 kilometres west of Kamloops, B.C. The claims are centered at 50° 35' north latitude and 120° 43' west longitude on NTS map sheet 092I/10E. The claims are in the Kamloops Mining Division.
- 3.2 Access is provided by the Trans-Canada Highway and then south along Tunkwa Lake Road which branches off the highway at Savona. The Tunkwa Lake Road is followed for approximately 14 kilometres to the Durand Creek Road which is in turn followed for 15 kilometres to the base line on the Dominic claim. Alternately, access may be gained from the Coquihalla Highway by taking the Logan Lake turnoff.



REYNOLDS GEOLOGICAL		
LOCATION MAP		
KAMLOOPS M.D.		NTS: 0921/10E
DRAWN: PR.	MAY '93	FIG. NO. 1

3.3 The property lies between elevations 1,525 and 1,595 metres above sea level. Vegetation consists of open to moderate Jack Pine. The property has been partially logged. Water for all stages of exploration is available from several large swamps and Chartrand Creek. The climate is characterized by warm, dry summers and cool winters with low to moderate snowfall.

4. CLAIM STATUS

4.1 The Dominic property comprises six mineral claims totaling 54 units. Complete claim information is as follows:

<u>NAME</u>	<u>UNITS</u>	<u>RECORD NO.</u>	<u>EXPIRY DATE *</u>
Dominic North	8	216705	August 16, 1998
Dominic South	16	216706	August 16, 19999
Fox	20	300282	June 9, 1997
Fox 2	8	339085	August 16, 1997
Fox 3	1	339105	August 10, 1998
Fox 8	1	340359	September 14 1998

* Includes assessment currently being applied.

4.3 The claims are recorded in the name of Mr. Charles Boitard. Any legal aspect of claim ownership is beyond the scope of this report.

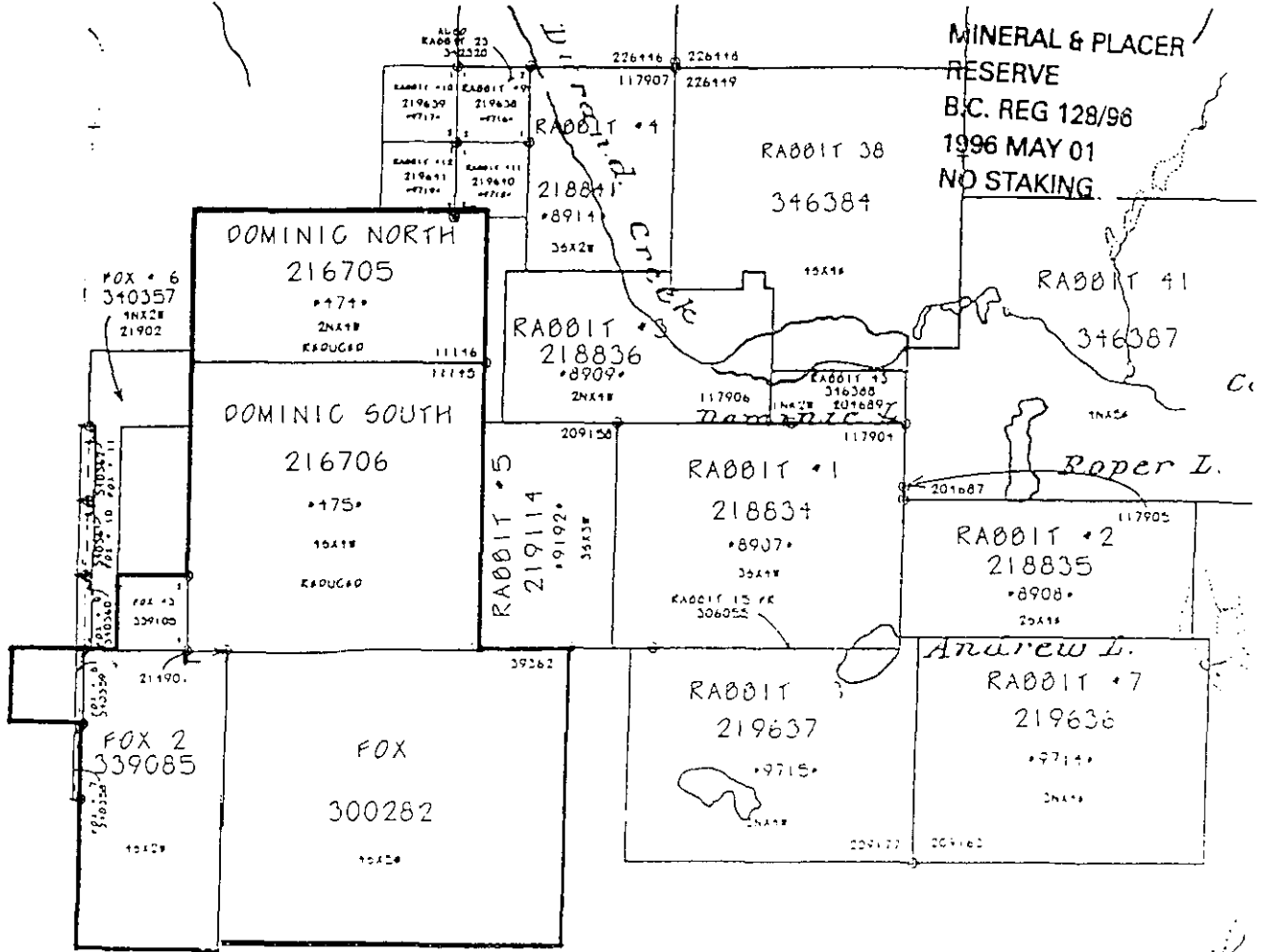
5. HISTORY

5.1 The first recorded work on the property was in 1978 when induced polarization surveys and soil geochemical surveys were carried out over a portion of the Dominic property by Geotronics Surveys Ltd. The I.P. survey delineated five anomalies, one of which is particularly interesting because of its size and its correlation with a resistivity low. Only two lines were soil sampled therefore the results are difficult to interpret with any meaning.

5.2 In January and February, 1980 a percussion drilling program was carried out on the property by Green Valley Mines Inc. Goldsmith et. al. reported that the results of the percussion drilling were low but could be correlated with lithology (La Rue, 1991).

5.3 In 1984, exploration consisted of induced polarization, VLF-EM, trenching and rock and soil sampling and one diamond drill hole.

MINERAL & PLACER
RESERVE
B.C. REG 128/96
1996 MAY 01
NO STAKING



REYNOLDS GEOLOGICAL

CLAIM MAP



KAMLOOPS M.D.

NTS: 0921/10E

SCALE AS SHOWN

DRAWN: P.R.

MAY '86

FIG. NO. 2

50° 30' N

120° 45' W

5.4 In 1991, more induced polarization surveys were completed on the property and in 1993 one diamond drill hole was completed. Three percussion drill holes were completed in 1994 and three percussion holes were drilled in 1995. Two diamond drill holes were completed during 1996.

6. **GEOLOGY**

6.1 The Dominic claims lie within the Quesnel Trough, a 30 to 60 kilometre wide belt of Lower Mesozoic volcanic and related sedimentary rocks bounded by older sedimentary rocks of the Cache Creek Group to the east and younger Coast Intrusions to the west. In the area of the Dominic claims the Quesnel Trough is dominated by Upper Triassic Nicola Group andesites, basalts, tuffs and argillites. The Nicola Group is intruded by Upper Triassic - Lower Jurassic diorite, syenite and monzonite of the Iron Mask Batholith. This batholith represents a major northwest trending structure that crosscuts the north-northwesterly trending Nicola volcanics. Portions of this area are obscured by later plateau lavas.

6.2 Bedrock exposure in this area amounts to only about ten percent, the rest being covered by glacial drift deposited from Pleistocene ice sheets that moved from northwest to southeast.

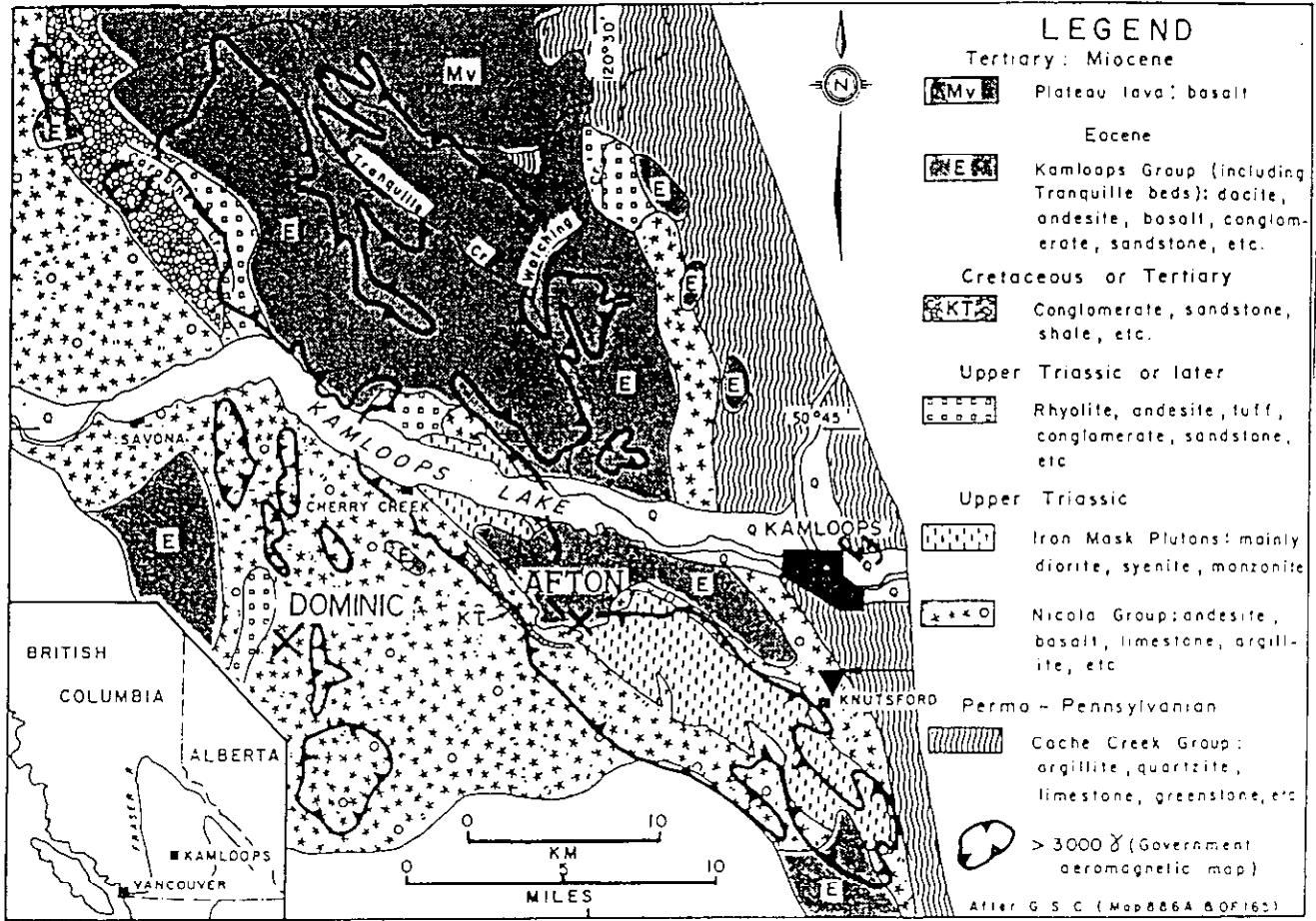
6.3 No systematic, property scale geological mapping has been carried out on the property. The Dominic claims are underlain by andesite of the Nicola Group. Alteration of the Nicola Andesite consists of propylitization. The resultant alteration products consist of hematite, chlorite, epidote and calcite.

7. **PERCUSSION DRILLING**

7.1 During the period June 2 to June 5, 1997 one percussion drill hole was completed on the Dominic South claim. The hole was drilled vertically to test for sulphide mineralization within an area outlined by anomalous geophysical signatures as defined in previous surveys. The drill hole location is plotted on Figure 4.

7.2 Drilling and sampling was supervised by Mr. Charles Boitard, the present owner of the claims. Samples were taken every three metres (ten feet). Samples were obtained by riffling the chips down to approximately five kilograms of sample. A grab of this material was then sent to Rossbacher Laboratory Ltd., in Burnaby B.C., for analysis by 31 element ICP. None of the samples were assayed for gold. Exact analytical procedures are listed in appendix III. The hole was logged by the author. Drill logs are included in appendix II.

7.3 Percussion drill hole 97-1 was drilled vertically to a depth of 91.46 metres. The hole



REYNOLDS GEOLOGICAL

REGIONAL GEOLOGY

KAMLOOPS M.D.

NTS: 0921/10E

SCALE
AS SHOWN

DRAWN: P.R.

MAY '93

FIG. NO. 3

intersected Nicola andesites for the entire length. The andesite exhibits weak propylitic alteration throughout. Strong bleaching of the mafics was noted between 33.54 and 79.27 metres. No significant sulphide mineralization was encountered. No significant copper values were returned.

8. CONCLUSION AND RECOMMENDATIONS

- 8.1 The 1997 percussion drilling program failed to delineate any significant copper mineralization. It is recommended that all previous work be compiled on to one database and be reviewed by qualified personnel. In conjunction with the above, property scale geological mapping should be completed.

9. REFERENCES

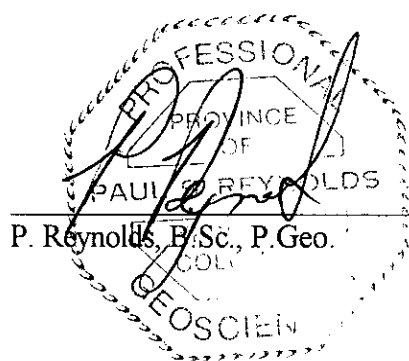
- Carr, J.M. and Reed, A.J. Afton: A Supergene Copper Deposit. Part of C.I.M., Special Volume 15: Porphyry Deposits of the Canadian Cordillera. 1976.
- Cockfield, W.E. Geology and Mineral Deposits of Nicola Map Area, British Columbia. Geological Survey of Canada, Memoir 249, 1961.
- La Rue, John P. Assessment Report on Geophysical Survey Conducted on the Dominic Group for Charles Boitard. October 5, 1991.
- Mark, David G. Geophysical - Geochemistry Report on Induced Polarization and Soil Sample Surveys over the Dominic Claim Group for Green Valley Mine Inc. March 20, 1979.
- Reynolds, Paul Percussion Drilling Report on the Dominic Mineral Claims, Kamloops Mining Division, B.C. British Columbia Assessment Report. November, 1994.

10. **CERTIFICATE**

I, Paul Reynolds, of the city of Vancouver in the province of British Columbia do hereby certify that:

- 1) I am a Professional Geoscientist registered with the Association of Professional Engineers and Geoscientists of British Columbia.
- 2) I am a graduate of the University of British Columbia with a B.Sc. degree in geology.
- 3) I have practiced my profession as exploration geologist since graduation in 1987.
- 4) This report is based on a review of previous reports and on the authors drill log of PDH 97-1.
- 5) I have no interest, directly or indirectly, in the Fox property or in the securities of any company controlled by Mr. Charles Boitard, nor do I expect to receive any interest in the future.
- 6) Permission is hereby granted to Mr. Charles Boitard to use this report in support of any filing to be submitted to the Ministry of Energy, Mines and Petroleum Resources of the Province of British Columbia for the purpose of filing assessment on the Fox mineral claim.

Dated this 8th day of September, 1997.



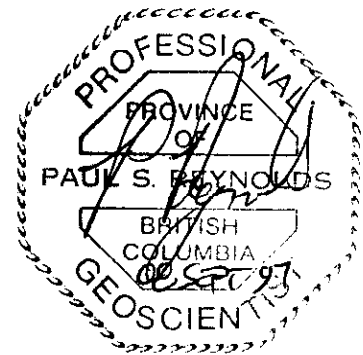
APPENDIX I
STATEMENT OF COSTS

STATEMENT OF COSTS

June 2 to June 5, 1997

Percussion Drilling	91.5 metres @ \$30/metre	2,745
Truck rental & fuel		350
Assaying	29 samples @ \$12/sample	348

TOTAL		\$3,443
--------------	--	----------------



APPENDIX II

DRILL LOGS

PERCUSSION
~~DIAMOND~~ DRILL RECORD

PROPERTY DOMINIC

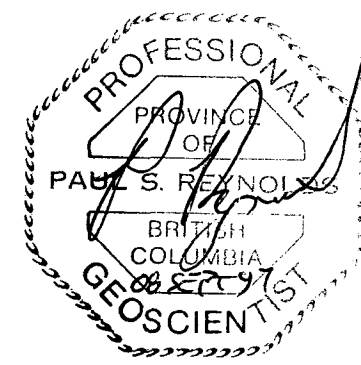
HOLE No. PDH 97-1

DIP TEST		
Footage	Angle	
	Reading	Corrected

Hole No. PDH 97-1 Sheet No. 1 of 2 Lat. _____
 Section _____ Dep. _____
 Date Begun JUNE 2/97 Bearing _____
 Date Finished JUNE 5/97 Elev. Collar _____
 Date Logged AUGUST 30/97

Total Depth 91.46 m
 Logged By P. REYNOLDS
 Claim DOMINIC SOUTH
 Core Size PERCUSSION

DEPTH(m)		RECOVERY	DESCRIPTION	SAMPLE No.	FROM	TO	WIDTH OF SAMPLE						
FROM	TO												
0	3.05		CASING.										
3.05	18.29		LIGHT GREY & GREEN CHIPS. ANDESITIC IN COMPOSITION. 3-5% SiO ₂ 6.10-18.29 MINOR ORANGE RUST STAIN 9.15-18.29 MINOR EPIDOTE ALTERATION. TR Py.										
18.29	33.54		FS ABOVE BUT WITH INCREASING QTZ CONTENT (5-7%) & MODERATE EPIDOTE ALT'N THROUGHOUT. MINOR ORANGE RUST STAIN. TR Py.										
33.54	45.73		ORANGE-BROWN, LIGHT GREEN & GREY CHIPS. MODERATELY SILICEOUS (UP TO 20% QTZ LOCALLY) AND BLEACHED. GRADUALLY FROM LIGHT GREEN TO RUSTY ORANGE-BROWN & GREY AS YOU MOVE DOWN SECTION. 33.54-39.63 TRACE AMETHYST 39.63-45.73 20% QTZ										



APPENDIX III
ANALYTICAL RESULTS

ROSSBACHER LABORATORY LTD.

CERTIFICATE OF ANALYSIS

2225 Springer Ave., Burnaby,
British Columbia, Can. V5B 3N1
Ph: (604) 299-6910 Fax: 299 6252

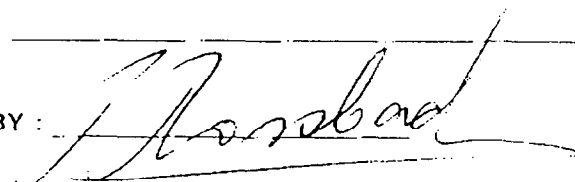
To : GREEN VALLEY MINING LTD.
2245 W 13TH AVE.,
VANCOUVER, B.C.

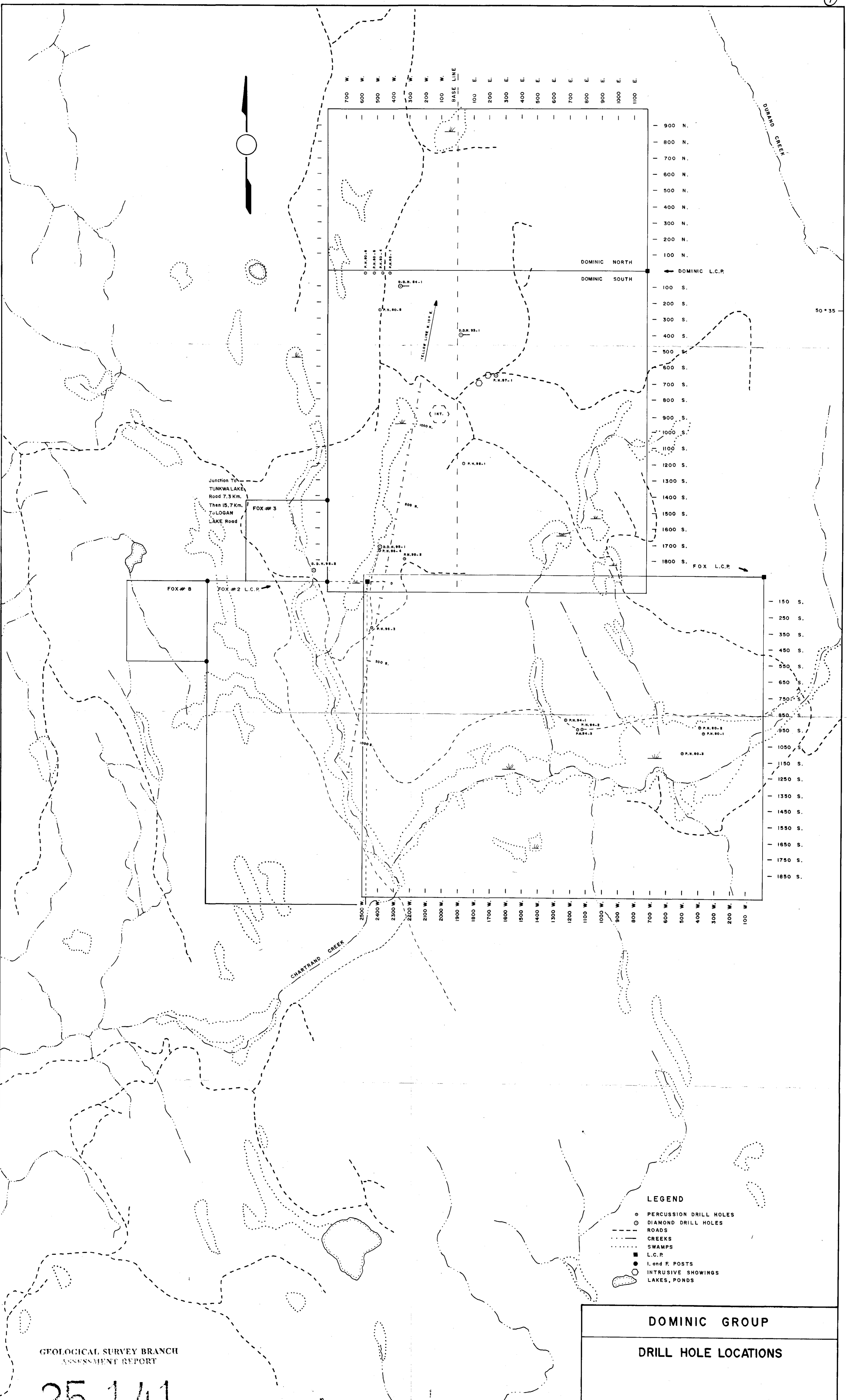
Project: DOM
Type of Analysis: ICP

Certificate: 97086
Invoice: 50833
Date Entered: 97-06-06
File Name: MEN97086.12
Page No.: 1

REF	SAMPLE NAME	PPM Ag	PPM Al	PPM As	PPM Ba	PPM Be	PPM Bi	PPM Ca	PPM Cd	PPM Co	PPM Cr	PPM Cu	PPM Fe	PPM K	PPM La	PPM Mg	PPM Mn	PPM Mo	PPM Na	PPM Ni	PPM P	PPM Pb	PPM S	PPM Sb	PPM Se	PPM Si	PPM Sn	PPM Sr	PPM Ti	PPM V	PPM W	PPM Zn
A1	Dominic 97-1 10-20	0.1	0.77	8	102	1.0	1	1.42	0.1	10	41	43	1.34	0.09	11	0.50	312	2	0.05	11	785	12	0.01	2	1	0.04	1	35	0.01	29	1	38
A1	Dominic 97-1 20-30	0.1	0.66	4	103	1.0	1	1.79	0.1	4	32	34	1.29	0.12	12	0.35	350	3	0.05	11	786	16	0.01	3	1	0.03	1	34	0.01	28	1	34
A1	Dominic 97-1 30-40	0.1	1.67	5	134	1.0	1	3.53	0.1	20	24	86	3.49	0.07	8	1.19	862	1	0.03	10	1501	7	0.01	1	1	0.04	1	113	0.07	128	1	65
A1	Dominic 97-1 40-50	0.1	1.31	3	94	1.0	1	2.66	0.1	12	25	70	3.07	0.09	9	1.14	708	1	0.04	10	1325	7	0.01	1	1	0.03	1	54	0.06	197	1	59
A1	Dominic 97-1 50-60	0.2	2.07	4	115	1.0	1	3.72	0.5	18	22	86	4.03	0.07	7	1.67	1000	1	0.04	12	1734	7	0.01	1	1	0.03	1	99	0.11	148	1	77
A1	Dominic 97-1 60-70	0.4	1.28	3	238	1.0	1	5.02	0.9	17	15	99	4.24	0.09	5	1.04	928	1	0.02	9	1513	3	0.01	1	1	0.04	1	73	0.05	143	1	71
A1	Dominic 97-1 70-80	0.4	1.46	16	202	1.0	1	5.72	0.8	23	15	96	1.43	0.16	6	0.92	1058	1	0.02	11	1627	1	0.01	1	1	0.04	1	133	0.01	104	1	61
A1	Dominic 97-1 80-90	0.4	1.28	6	201	1.0	1	4.10	0.1	19	13	91	3.42	0.09	7	0.90	981	1	0.03	9	1231	6	0.01	1	1	0.03	1	100	0.04	126	1	62
A1	Dominic 97-1 90-100	0.2	1.86	1	123	1.0	1	3.96	0.5	15	19	98	3.83	0.06	6	1.40	910	1	0.03	9	1542	5	0.01	1	1	0.04	1	75	0.10	146	1	67
A1	Dominic 97-1 100-110	0.1	2.33	1	98	1.0	1	4.93	0.1	9	34	69	3.46	0.06	6	1.47	848	1	0.03	13	1538	203	0.01	1	1	0.03	1	85	0.14	139	1	83
A1	Dominic 97-1 110-120	0.7	1.61	1	102	1.0	4	4.73	0.1	12	41	42	2.50	0.12	7	0.84	617	2	0.02	10	1145	1	0.03	1	1	0.04	1	69	0.07	96	1	47
A1	Dominic 97-1 120-130	0.1	0.86	3	112	1.0	1	3.13	0.1	8	26	29	1.60	0.15	5	0.39	414	2	0.02	7	773	3	0.01	1	1	0.04	1	48	0.02	48	1	36
A1	Dominic 97-1 130-140	0.1	0.63	3	798	1.0	1	2.70	0.1	10	28	24	1.34	0.15	6	0.26	377	3	0.02	6	583	1	0.02	1	1	0.04	1	53	0.01	30	1	32
A1	Dominic 97-1 140-150	0.1	0.63	3	603	1.0	1	2.75	0.1	6	34	23	1.19	0.17	5	0.73	341	4	0.02	5	536	1	0.02	1	1	0.04	1	59	0.01	25	1	32
A1	Dominic 97-1 150-160	0.1	0.55	7	617	1.0	1	2.62	0.1	4	35	22	1.22	0.15	5	0.33	384	3	0.02	6	491	1	0.02	1	1	0.04	1	65	0.01	21	2	31
A1	Dominic 97-1 160-170	0.1	0.43	1	803	1.0	1	2.67	0.1	5	30	19	1.28	0.15	7	0.43	456	3	0.02	5	425	4	0.02	2	1	0.03	1	73	0.01	16	1	35
A1	Dominic 97-1 170-180	0.1	0.48	1	611	1.0	1	2.49	0.1	10	43	20	1.33	0.15	3	0.46	479	4	0.01	5	423	1	0.02	1	1	0.03	1	65	0.01	18	1	36
A1	Dominic 97-1 180-190	0.1	0.42	1	661	1.0	1	2.36	0.1	9	40	20	1.28	0.17	4	0.46	463	4	0.02	5	385	1	0.03	4	1	0.03	1	67	0.01	14	1	34
A1	Dominic 97-1 190-200	0.1	0.36	8	748	1.0	7	2.24	0.1	5	34	20	1.22	0.11	4	0.45	439	5	0.01	4	394	8	0.03	1	1	0.03	1	66	0.01	13	3	31
A1	Dominic 97-1 200-210	0.1	0.39	9	699	1.0	3	2.46	0.1	3	37	19	1.34	0.13	4	0.50	487	5	0.02	6	398	11	0.03	3	1	0.04	1	68	0.01	13	3	35
A1	Dominic 97-1 210-220	0.1	0.44	6	550	1.0	1	2.27	0.1	6	46	19	1.25	0.13	1	0.47	440	5	0.02	6	374	11	0.03	1	1	0.03	1	61	0.01	14	3	35
A1	Dominic 97-1 220-230	0.1	0.40	10	663	1.0	1	2.14	0.1	4	43	18	1.15	0.12	1	0.43	419	5	0.01	6	320	10	0.03	6	1	0.04	1	58	0.01	12	3	36
A1	Dominic 97-1 230-240	0.1	0.41	10	751	1.0	1	2.16	0.1	7	44	23	1.28	0.13	1	0.50	448	5	0.02	4	303	7	0.05	1	1	0.04	1	61	0.01	15	3	36
A1	Dominic 97-1 240-250	0.1	0.40	4	797	1.0	5	2.62	0.1	8	31	38	1.67	0.13	7	0.73	534	3	0.01	8	578	23	0.07	7	1	0.04	1	73	0.01	23	4	47
A1	Dominic 97-1 250-260	0.1	0.46	1	894	1.0	1	2.62	0.1	9	40	29	1.62	0.14	11	0.79	514	3	0.03	10	714	7	0.07	5	1	0.04	1	84	0.01	21	1	42
A1	Dominic 97-1 260-270	0.1	0.40	1	877	1.0	1	2.41	0.1	11	29	25	1.52	0.12	10	0.72	478	2	0.03	9	739	1	0.05	4	1	0.04	1	77	0.01	21	1	44
A1	Dominic 97-1 270-280	0.1	0.47	1	877	1.0	1	2.40	0.1	5	39	24	1.61	0.13	13	0.79	477	4	0.04	11	843	5	0.04	4	1	0.04	1	80	0.01	25	1	42
A1	Dominic 97-1 280-290	0.1	0.48	1	867	1.0	1	2.37	0.1	13	36	21	1.58	0.13	13	0.82	460	3	0.03	12	842	7	0.04	3	1	0.03	1	83	0.01	23	1	40
A1	Dominic 97-1 290-300	0.1	0.44	1	939	1.0	5	2.33	0.1	9	32	23	1.53	0.13	14	0.79	472	3	0.03	13	786	3	0.05	3	1	0.03	1	91	0.01	17	1	51

CERTIFIED BY :





Junction To
TUNKWA LAKE
Road 7.3 Km.
Then 15.7 Km.
To LOGAN
LAKE Road

- LEGEND**
- PERCUSSION DRILL HOLES
 - DIAMOND DRILL HOLES
 - ROADS
 - CREEKS
 - ... SWAMPS
 - L.C.P.
 - I. and F. POSTS
 - INTRUSIVE SHOWINGS
 - LAKES, PONDS

DOMINIC GROUP

DRILL HOLE LOCATIONS

SCALE 1 = 10 000 DATE JULY 97 N.T.S. 92 1/10 E FIG.

0 100 200 300 400 500 M.

GEOLOGICAL SURVEY BRANCH
ASSESSMENT REPORT

25,141①

50° 35'

120° 43'