

**RECEIVED**  
**NOV 14 1997**  
Gold Commissioner's Office  
VANCOUVER, B.C.

**1997 DIAMOND DRILLING  
ASSESSMENT REPORT**

on the

**Rock & Roll Mineral Claims  
Located in the Iskut River Area, British Columbia  
Liard Mining Division**

**NTS 104B/11**

**56°43' North Latitude  
132°14' West Longitude**

**-Prepared for-  
Redstar Resources Corporation**

**-Prepared by-  
Pamicon Developments Limited  
J.K. Dunning, B.Sc., M.Sc. Candidate  
T.C. Scott, B.Sc., FGAC**

**Date of Report - November 5, 1997**

**Volume 2 of 2**

CLERK OF THE COURT  
ASSESSMENT REPORT  
2 of 2

25,221

## TABLE OF CONTENTS

	<u>Page</u>
1.0 INTRODUCTION.....	1
1.1 General Geographic and Physiographic Position.....	2
1.2 Mineral Tenures.....	3
1.3 Owners, Operators, and Contractors.....	3
1.4 Regional History.....	3
1.5 Property History and Previous Work.....	4
1.6 Summary of Work.....	6
1.7 Claims Worked on.....	7
2.0 DETAILED TECHNICAL DATA.....	7
2.1 Purpose of Drill Program.....	7
2.2 Regional Geology.....	8
2.2.1 Paleozoic.....	9
2.2.2 Mesozoic.....	9
2.2.3 Cenozoic Volcanic Rocks.....	11
2.2.4 Plutonic Rocks.....	11
2.2.5 Structural Framework.....	11
2.3 Property Geology and Mineralization.....	12
2.3.1 Property Geology.....	12
2.3.2 Sulphide Mineralization.....	15
2.4 1997 Whole-rock and Trace Element Geochemistry.....	17
2.5 1997 Assay Geochemistry.....	18
3.0 MINERAL RESOURCE.....	19
4.0 DISCUSSION AND INTERPRETATION.....	20
5.0 PROPERTY POTENTIAL.....	22
6.0 CONCLUSIONS.....	23
7.0 RECOMMENDATIONS.....	24
8.0 STATEMENTS OF QUALIFICATIONS.....	26
9.0 BIBLIOGRAPHY.....	29

## LIST OF FIGURES

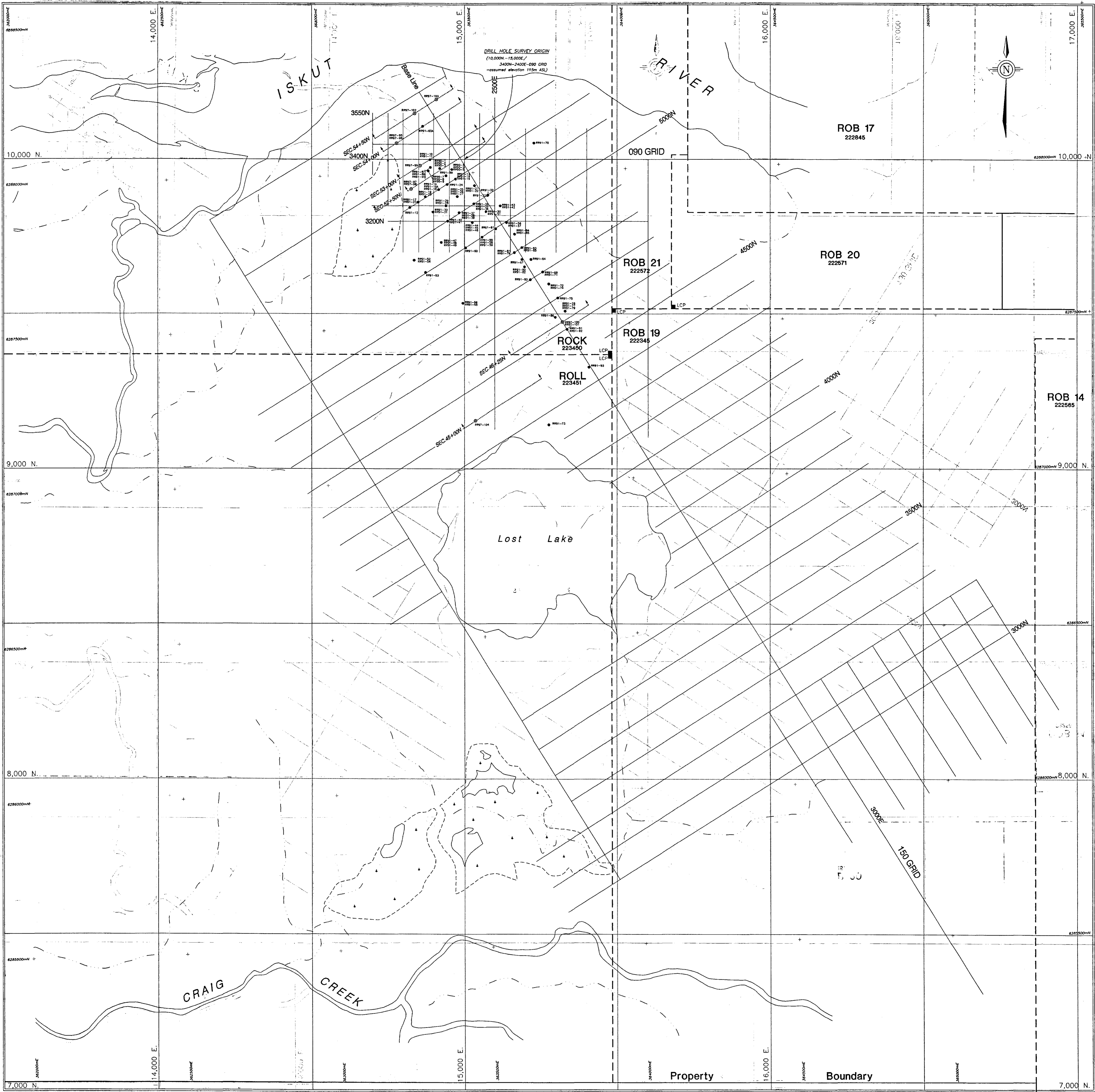
<u>Title</u>	<u>Following Page</u>
Figure 1 Property Location Map.....	2
Figure 2 Claim Map.....	3
Figure 3 Simplified Regional Geology.....	4
Figure 3a General Paleozoic and Mesozoic stratigraphic and plutonic framework for the Iskut River area (from Anderson, 1993).....	4
Figure 3b Temporal Framework for the Iskut River Area and Related Mineral Deposits.....	4
Figure 4 Geology Map.....	5
Figure 5 Soil Geochemistry Map.....	5
Figure 6 Ground Geophysical Survey Map.....	5
Figure 7 Airborne Electromagnetic Survey.....	5
Figure 8 1997 Drill Hole Plan Map.....	(in pocket)
Figure 9 Geology Drill Section 54+50E.....	(in pocket)
Figure 10 Geology Drill Section 54+00E.....	(in pocket)
Figure 11 Geology Drill Section 53+00E.....	(in pocket)
Figure 12 Geology Drill Section 52+50E.....	(in pocket)
Figure 13 Geology Drill Section 46+25E.....	(in pocket)
Figure 14 Geology Drill Section 45+00E.....	(in pocket)
Figure 15 Assay Drill Section 54+50E.....	(in pocket)
Figure 16 Assay Drill Section 54+00E.....	(in pocket)
Figure 17 Assay Drill Section 53+00E.....	(in pocket)
Figure 18 Assay Drill Section 52+50E.....	(in pocket)
Figure 19 Assay Drill Section 46+25E.....	(in pocket)
Figure 20 Assay Drill Section 45+00E.....	(in pocket)

## LIST OF TABLES

<u>Title</u>	<u>Following Page</u>
Table 1 List of Mineral Tenures for the Rock and Roll Property.....	3
Table 2 Location of Drill Sections Containing 1997 Drill Holes.....	12

## LIST OF APPENDICES

	<u>Following Text</u>
Appendix A Diamond Drill Hole Survey Summary- Black Dog and SRV Zones	“
Appendix B Significant Assay Results- Black Dog and SRV Zones (1990-1997)	“
Appendix C Whole-rock Analytical Results and Procedures	“
Appendix D Trace Element Analytical Results and Procedures	“
Appendix E Assay Analytical Results and Procedures	“
Appendix F 1997 Drill Logs: RR97-95 to RR97-104	“
Appendix G Statement of Expenditures	“



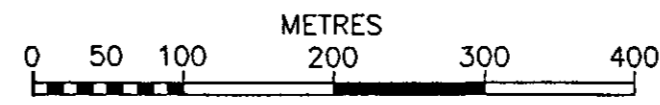
NOTE:  
CLAIM LOCATIONS  
Scaled from: Mineral Titles Ref. Map  
104811E (97/07/02)  
Laird Mining Division

Claim Name  
Record Number

GEOLOGICAL SURVEY BRANCH  
ASSESSMENT DIVISION

LEGEND

- PREVIOUS DRILL HOLES
- 1997 DRILL HOLES
- DRILL SECTION LINE
- SWAMP
- SMALL CREEK

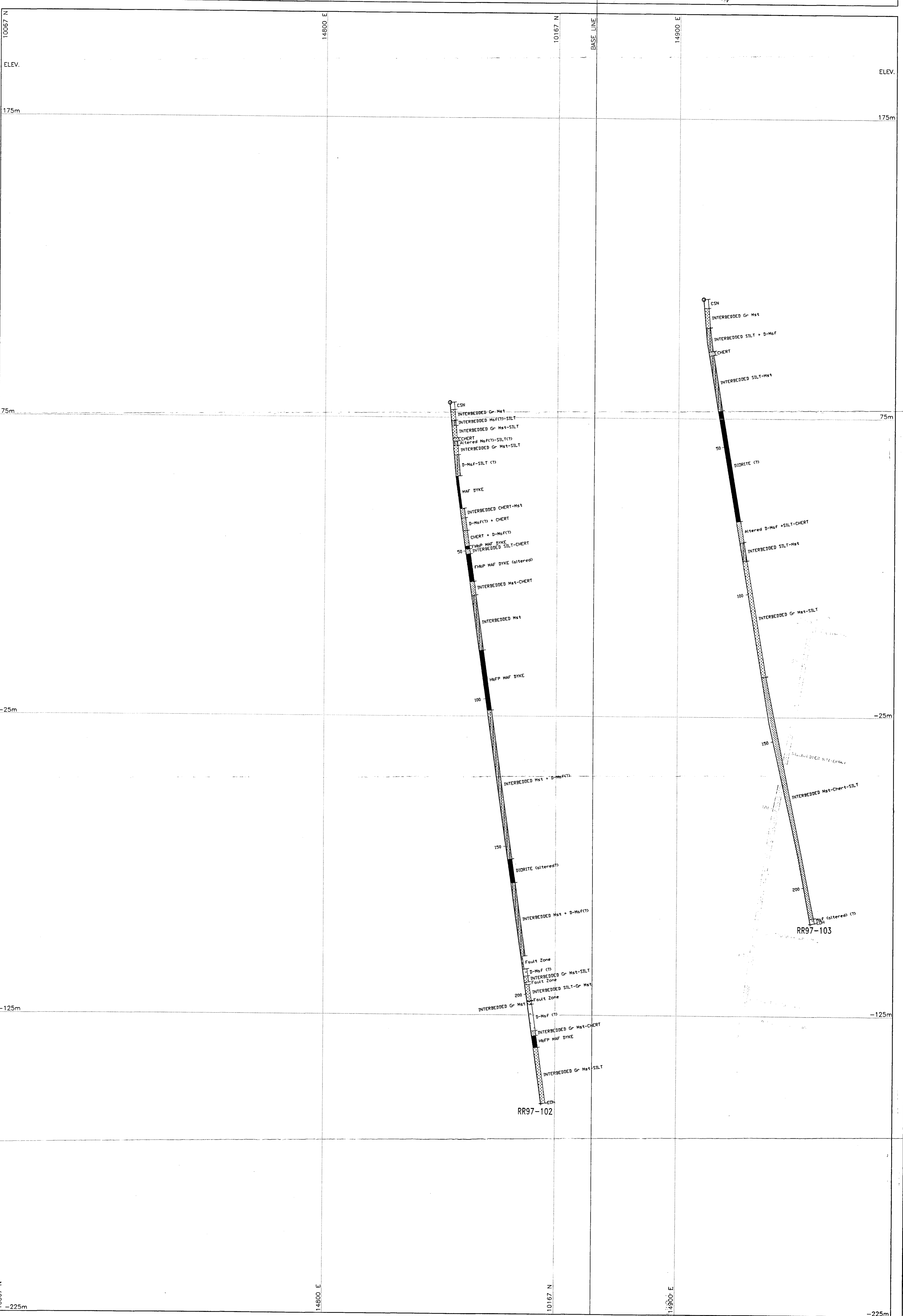
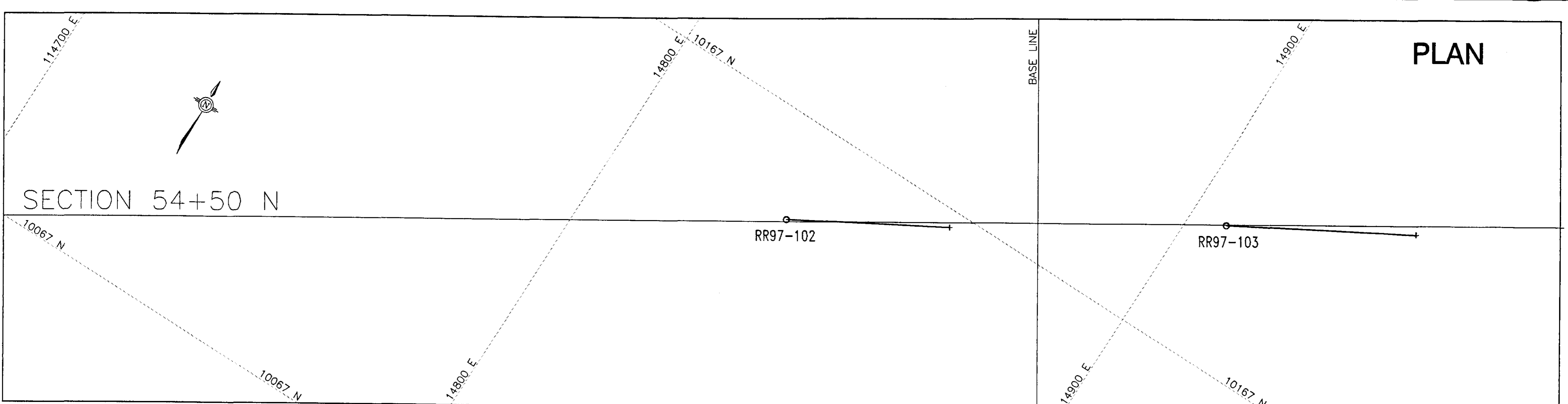


REDSTAR RESOURCES CORPORATION  
**ROCK AND ROLL PROJECT**  
 LAIRD MINING DIVISION  
 BRITISH COLUMBIA  
**DIAMOND DRILL HOLE LOCATIONS**  
 (BLACK DOG AND SRV ZONES)

PAMICON DEVELOPMENTS LIMITED

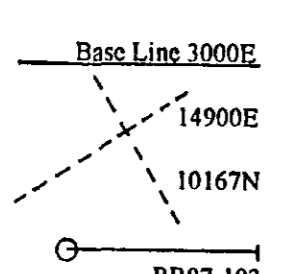
SCALE:	DATE:	NTS:	GEOLOGIST:	FIGURE:
1:5000	AUG. 29, 1997	1048/11E	J.K. DUNNING G. SCOTT	8

25,221



LEGEND

Cut Grid Lines (150° Grid):  
 Drill Hole Survey Coordinates:  
 Diamond Drill Hole:  
 Significant Assays:  
 Au g/t, Ag g/t, Cu %, Pb %, Zn %  
 >0.1 >1.5 >0.15 >0.10 >0.15



GEOLOGICAL SURVEY BRANCH  
ASSESSMENT REPORT

25,221

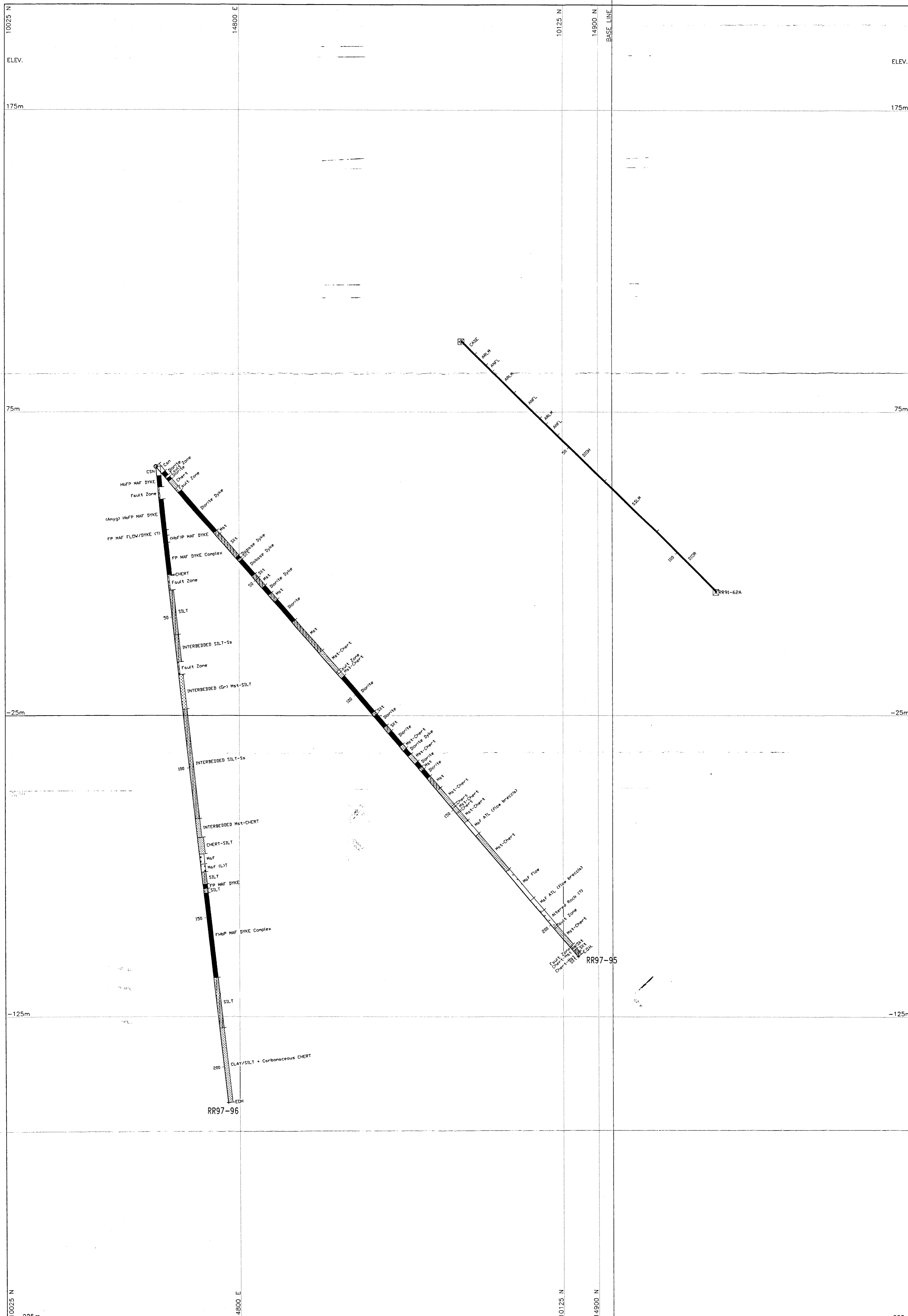
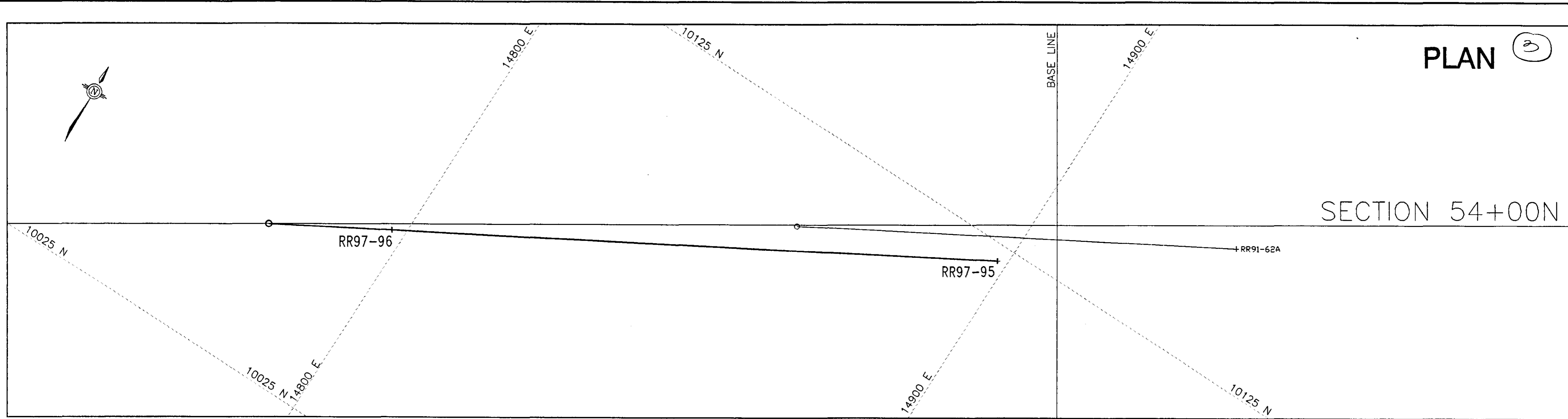


REDSTAR RESOURCES CORPORATION  
**ROCK and ROLL PROJECT**  
 LIARD MINING DIVISION, BRITISH COLUMBIA  
**DRILL SECTION 54+50 N**  
 Drill Holes: RR97-102/103  
 (Looking North) MAP 2

**GEOLOGY**

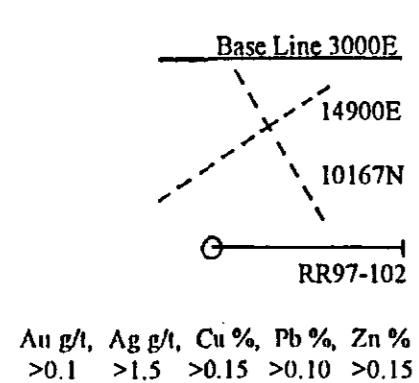
PAMICON DEVELOPMENTS LIMITED

SCALE: 1:500	DATE: NOV. 4, 1997	NTS: 103J/3E	GEOLOGIST: J.K. DUNNING	FIGURE: 9
--------------	--------------------	--------------	-------------------------	-----------



LEGEND

- Cut Grid Lines (150° Grid):
- Drill Hole Survey Coordinates:
- Diamond Drill Hole:
- Significant Assays:



GEOLOGICAL SURVEY BRANCH  
ASSESSMENT REPORT

25,221



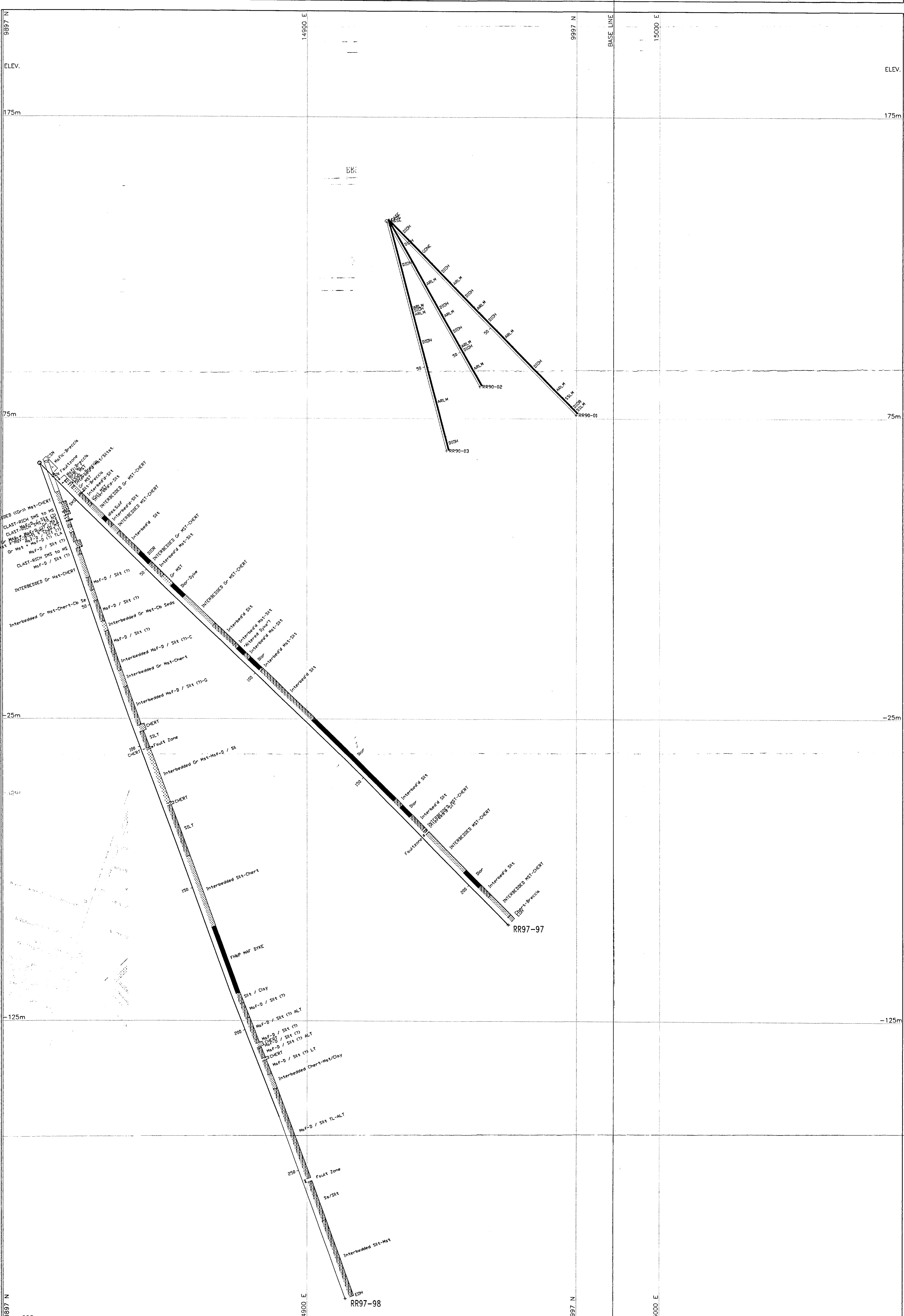
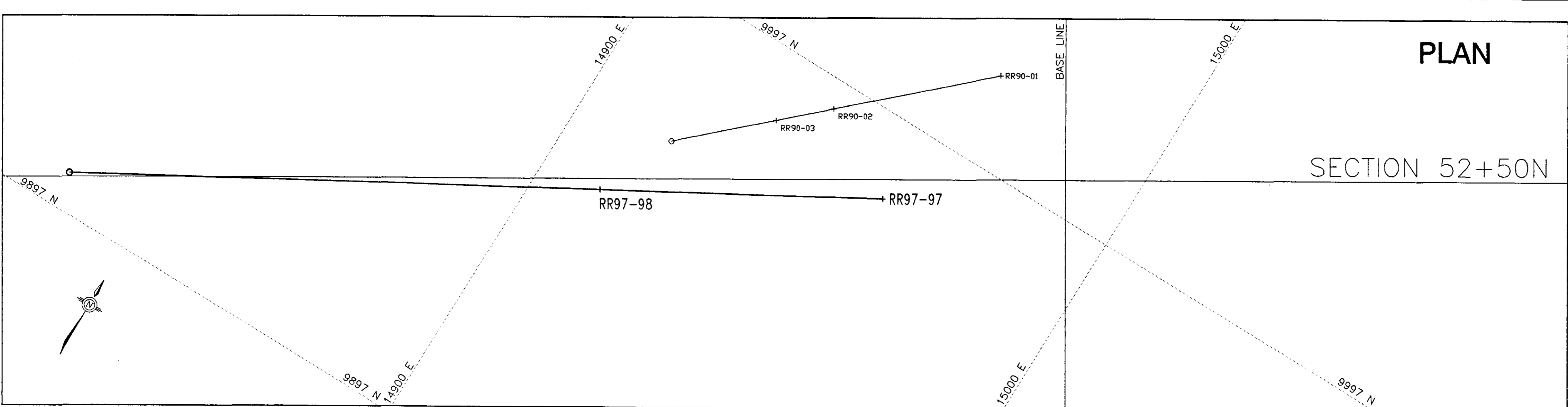
REDSTAR RESOURCES CORPORATION

ROCK and ROLL PROJECT  
LIARD MINING DIVISION, BRITISH COLUMBIA  
**DRILL SECTION 54+00 N**  
Drill Holes: RR97-095/096  
(Looking North)

**GEOLOGY**

PAMICON DEVELOPMENTS LIMITED

SCALE:	DATE:	NTS:	GEOLOGIST:	FIGURE:
1:500	NOV. 4, 1997	103J/3E	J.K. DUNNING	10



**LEGEND**

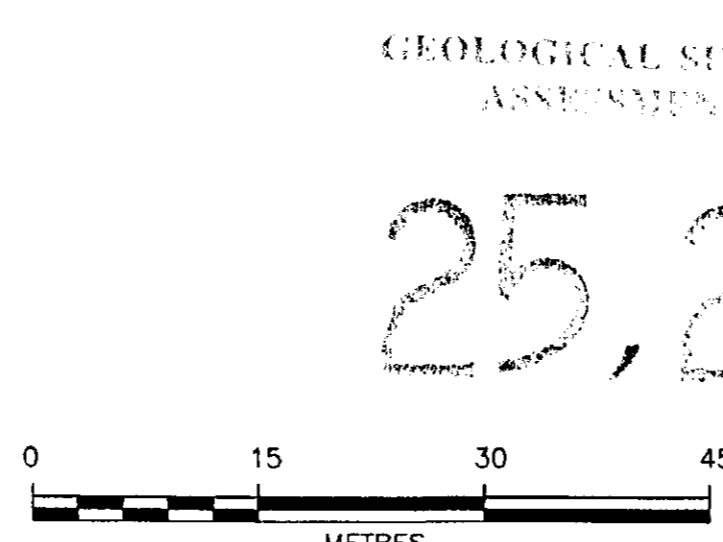
Cut Grid Lines (150° Grid):

Drill Hole Survey Coordinates:

Diamond Drill Hole:

Significant Assays:

Au g/t	Ag g/t	Ce %	Pb %	Zn %
>0.1	>1.5	>0.15	>0.10	>0.15



GEOLOGICAL SURVEY BRANCH  
ASSESSMENT REPORT

25,221

**REDSTAR RESOURCES CORPORATION**

**ROCK and ROLL PROJECT**  
LIARD MINING DIVISION, BRITISH COLUMBIA

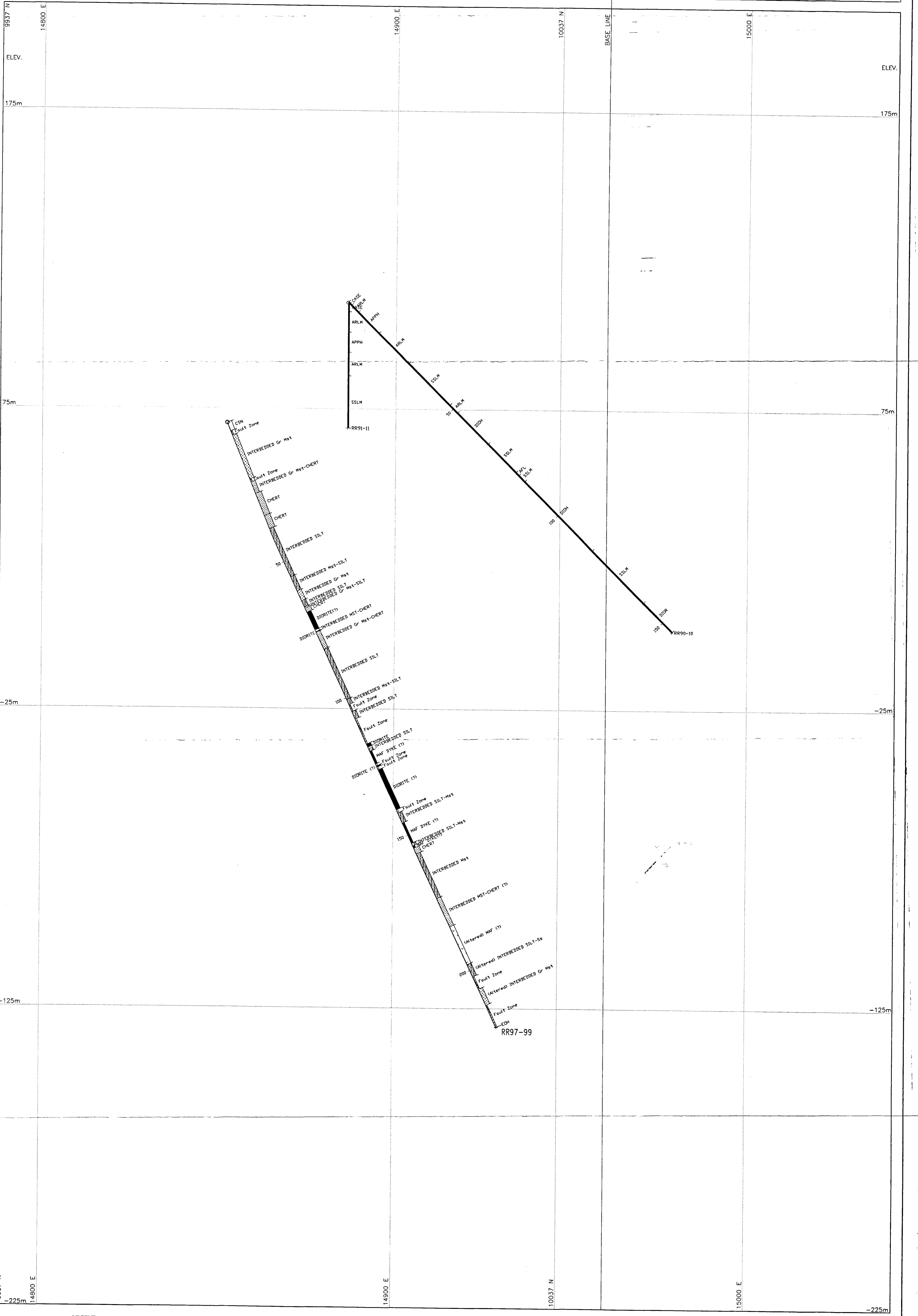
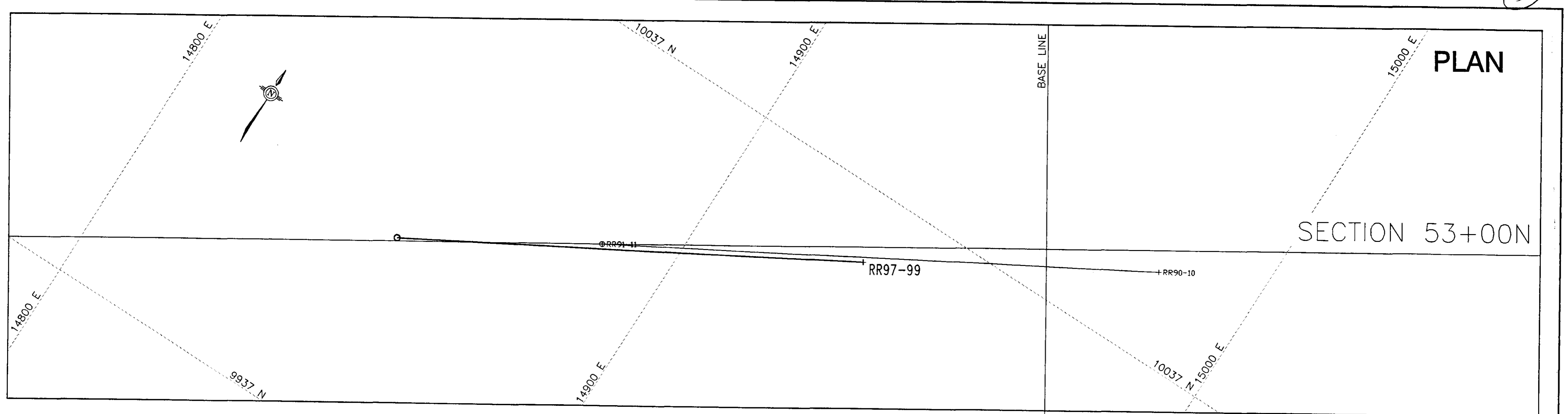
**DRILL SECTION 52+50 N**  
Drill Holes: RR97-097/098  
(Looking North)

**GEOLOGY** MAP 4

**PAMICON DEVELOPMENTS LIMITED**

SCALE:	DATE:	NTS:	GEOLOGIST:	FIGURE:
1:500	NOV. 4, 1997	103J/3E	J.K. DUNNING	12





**LEGEND**

Cur Grid Lines (150° Grid):

Drill Hole Survey Coordinates:

Diamond Drill Hole:

Significant Assays:

Base Line 3000E

14900E

10167N

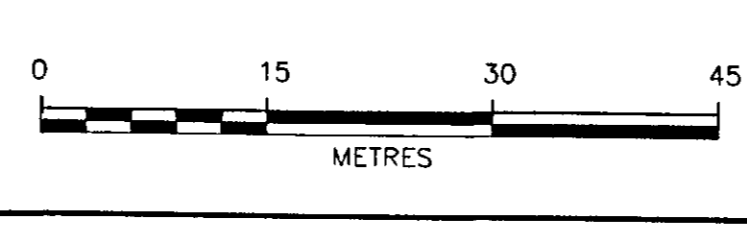
RR97-102

All g/t, Ag g/t, Cu %, Pb %, Zn %

>0.1 >1.5 >0.15 >0.10 >0.15

GEOLOGICAL SURVEY BRANCH  
ASSESSMENT REPORT

25,221



**REDSTAR RESOURCES CORPORATION**

**ROCK and ROLL PROJECT**

LIARD MINING DIVISION, BRITISH COLUMBIA

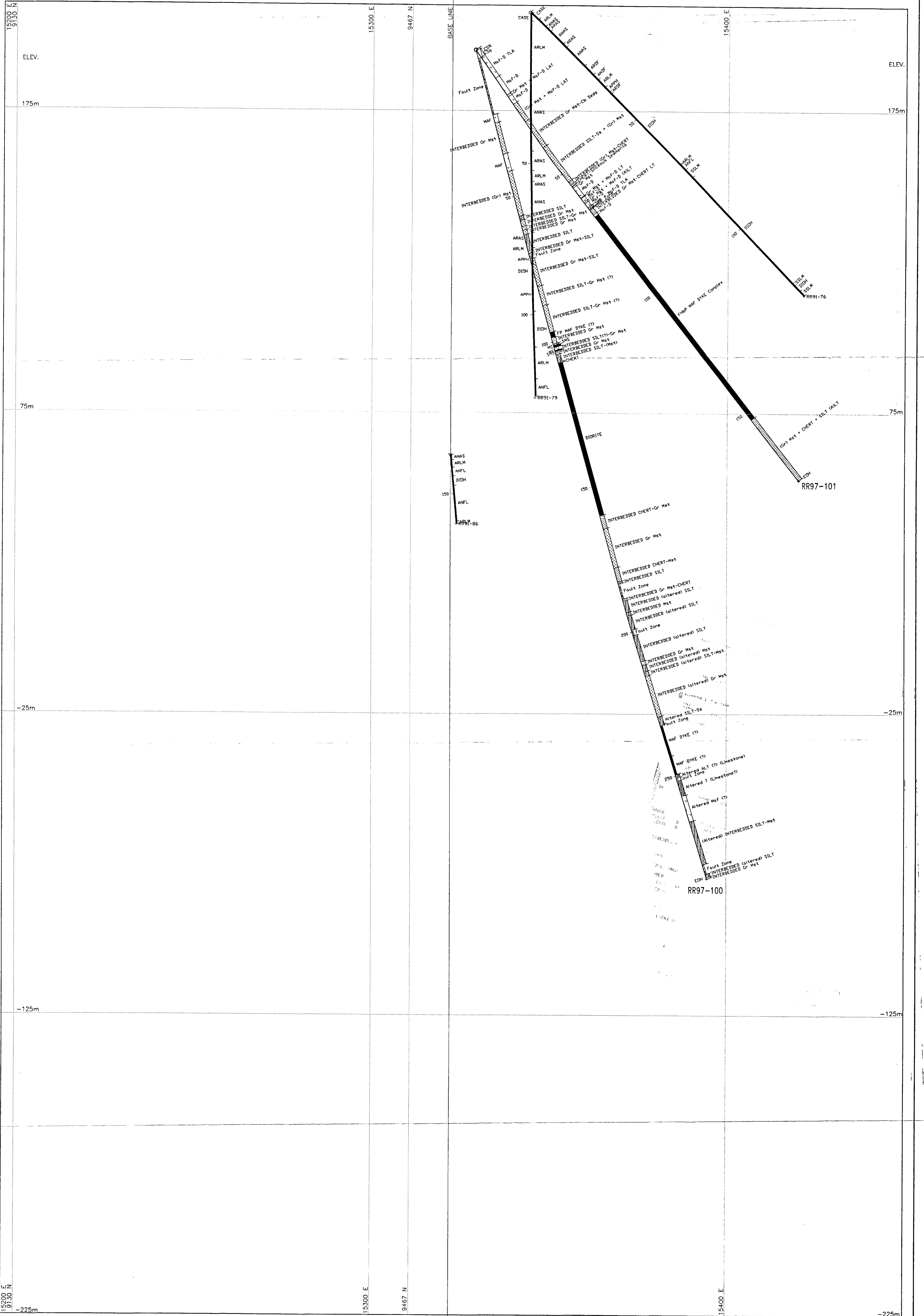
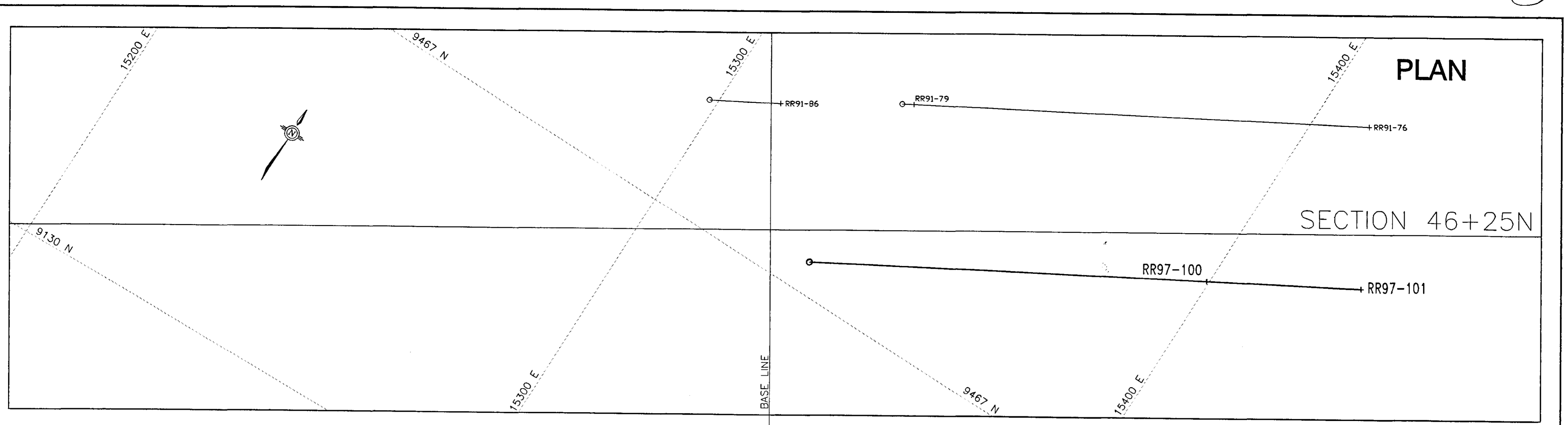
**DRILL SECTION 53+00 N**

Drill Hole: RR97-099 (Looking North)

**GEOLOGY**

**PAMICON DEVELOPMENTS LIMITED**

SCALE: 1:500	DATE: NOV.4, 1997	NTS: 103J/3E	GEOLOGIST: J.K. DUNNING	FIGURE: 11
--------------	-------------------	--------------	-------------------------	------------



**LEGEND**

Cut Grid Lines (150° Grid):

Drill Hole Survey Coordinates:

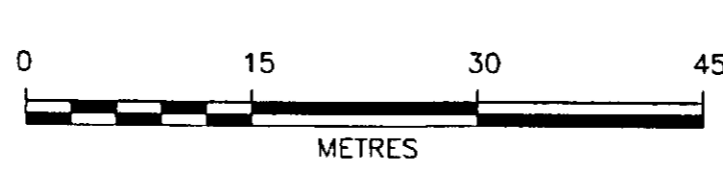
Diamond Drill Hole:

Significant Assays: Au g/t, Ag g/t, Cu %, Pb %, Zn %

>0.1 >1.5 >0.15 >0.10 >0.15

GEOLOGICAL SURVEY BRANCH  
ASSESSMENT REPORT

25,221



**REDSTAR RESOURCES CORPORATION**

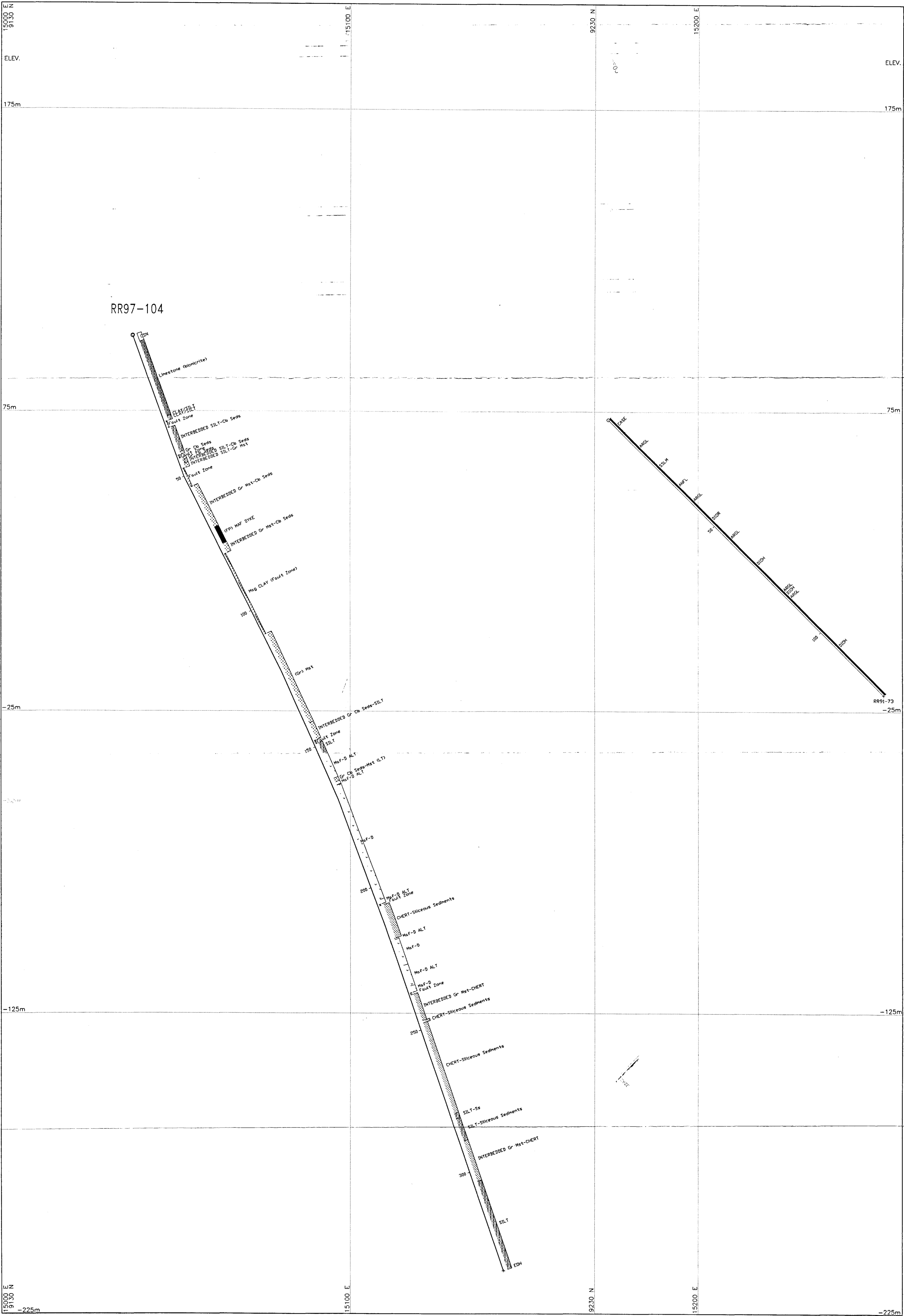
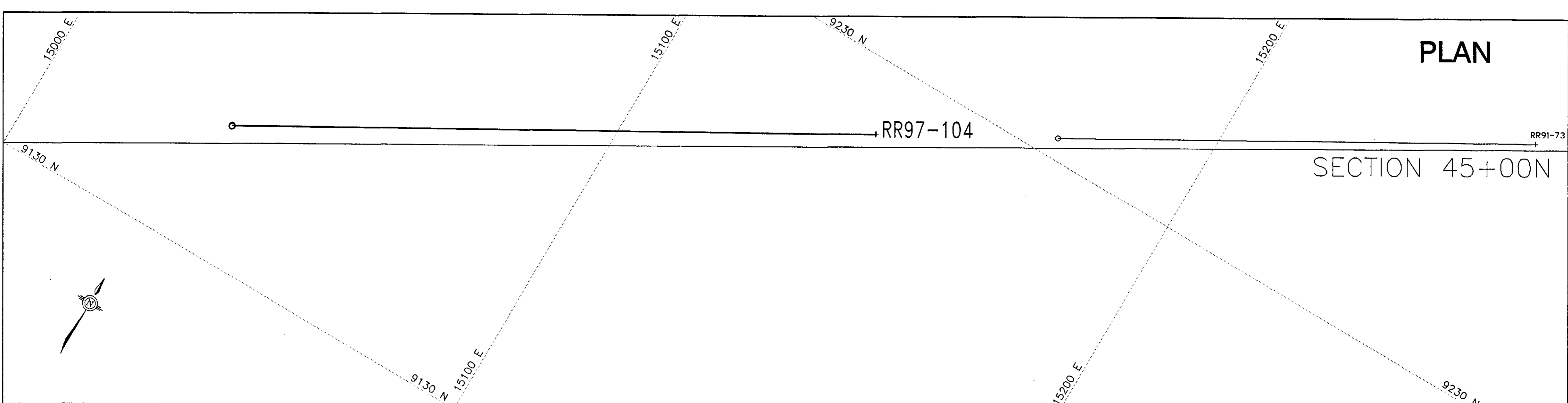
**ROCK and ROLL PROJECT**  
LIARD MINING DIVISION, BRITISH COLUMBIA

**DRILL SECTION 46+25 N**  
Drill Holes: RR97-100/101  
(Looking North)

**GEOLOGY**

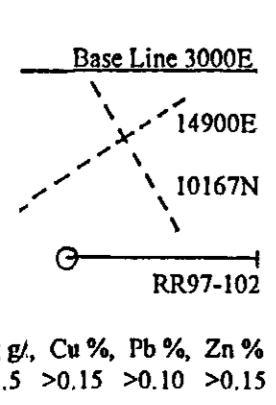
**PAMICON DEVELOPMENTS LIMITED**

SCALE: 1:500	DATE: NOV.4, 1997	NTS: 103J/3E	GEOLOGIST: J.K. DUNNING	FIGURE: 13
--------------	-------------------	--------------	-------------------------	------------



**LEGEND**

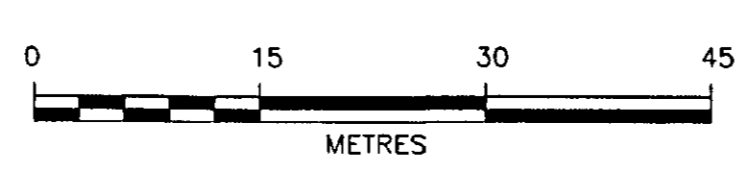
Cut Grid Lines (150° Grid):  
 Drill Hole Survey Coordinates:  
 Diamond Drill Hole:  
 Significant Assays:



Au g/t, Ag g/t, Cu %, Pb %, Zn %  
 >0.1 >1.5 >0.15 >0.10 >0.15

GEOLOGICAL SURVEY BRANCH  
 ASSESSMENT REPORT

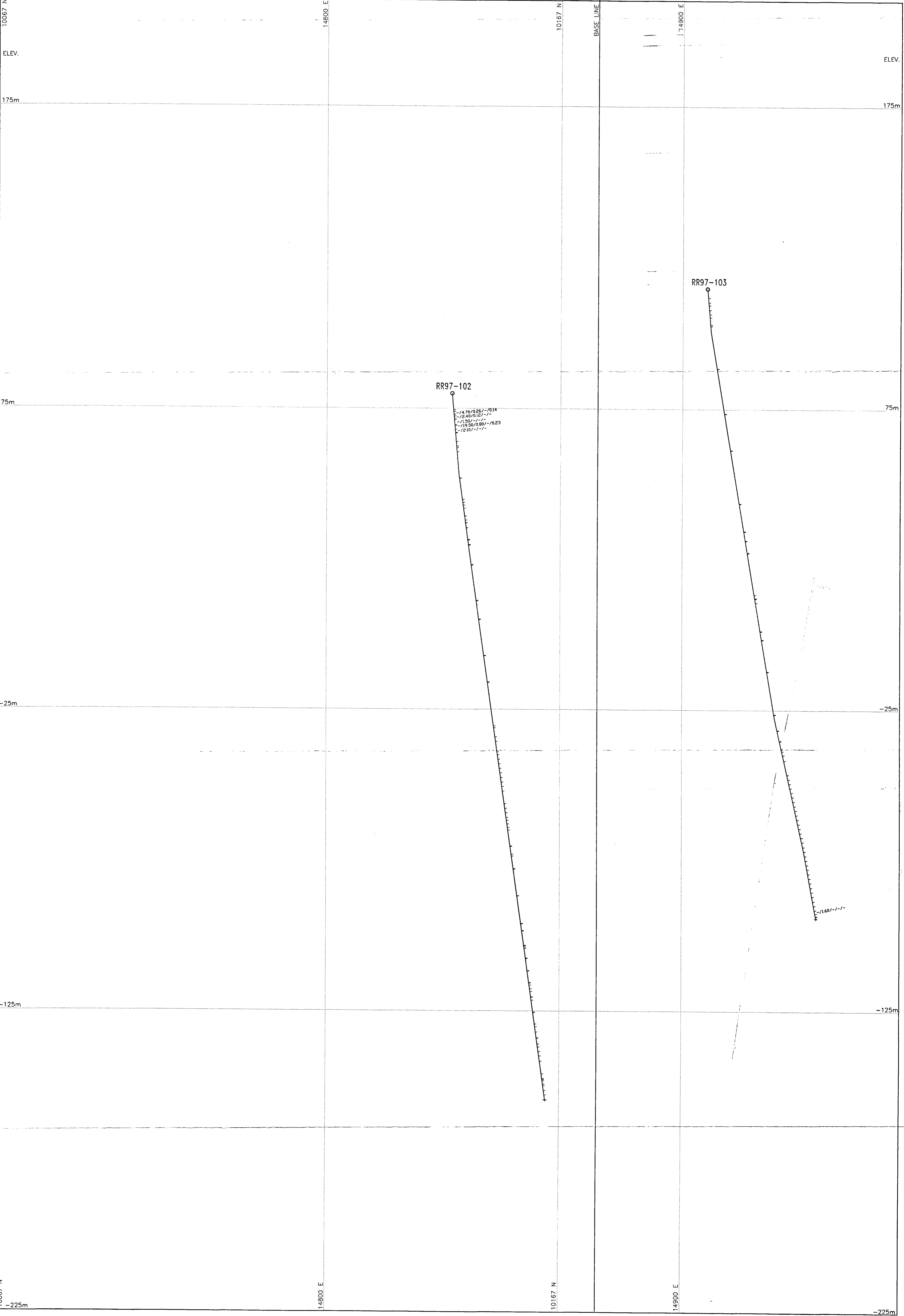
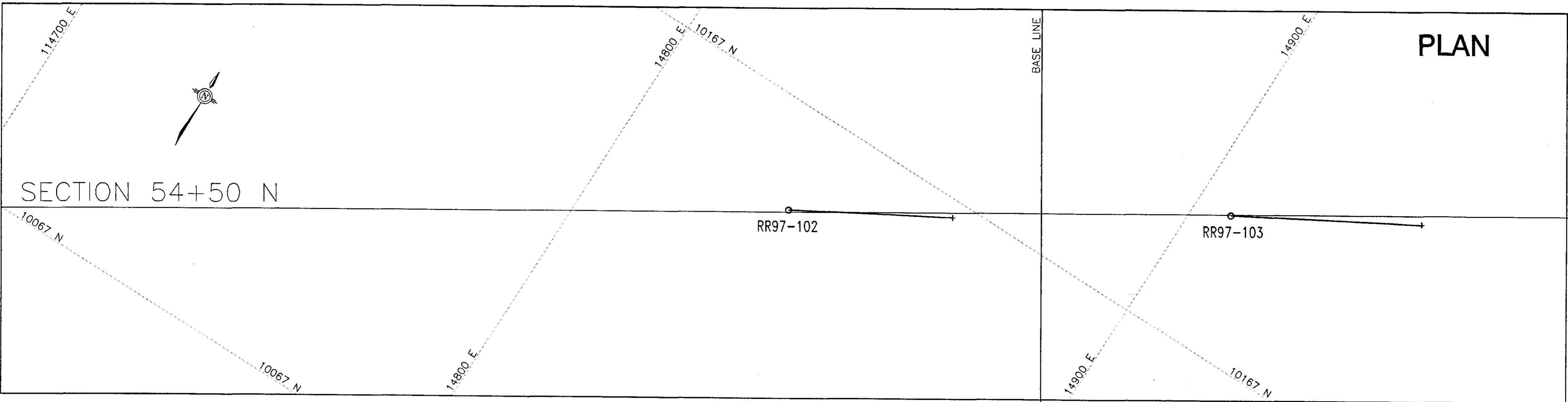
25,221



**REDSTAR RESOURCES CORPORATION**  
**ROCK and ROLL PROJECT**  
 LIARD MINING DIVISION, BRITISH COLUMBIA  
**DRILL SECTION 45+00 N**  
 Drill Hole: RR97-104  
 (Looking North)  
**GEOLOGY** (MAP 7)

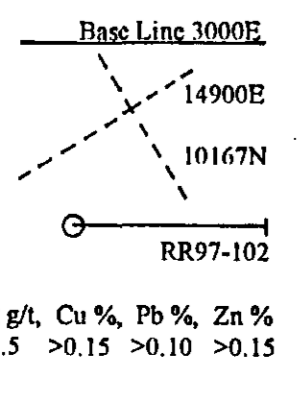
**PAMICON DEVELOPMENTS LIMITED**

SCALE:	DATE:	NTS:	GEOLOGIST:	FIGURE:
1:500	NOV.4, 1997	103J/3E	J.K. DUNNING	14



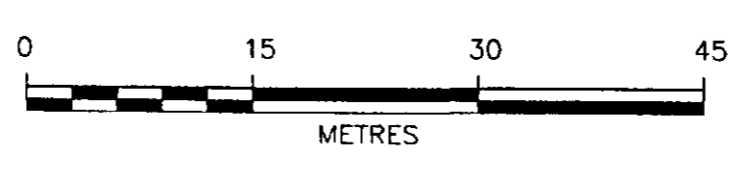
LEGEND

- Cut Grid Lines (150° Grid):
- Drill Hole Survey Coordinates:
- Diamond Drill Hole:
- Significant Assays:



GEOLOGICAL SURVEY BRANCH  
ASSESSMENT REPORT

25,221



REDSTAR RESOURCES CORPORATION

ROCK and ROLL PROJECT

LIARD MINING DIVISION, BRITISH COLUMBIA

**DRILL SECTION 54+50 N**

Drill Holes: RR97-102/103

(Looking North)

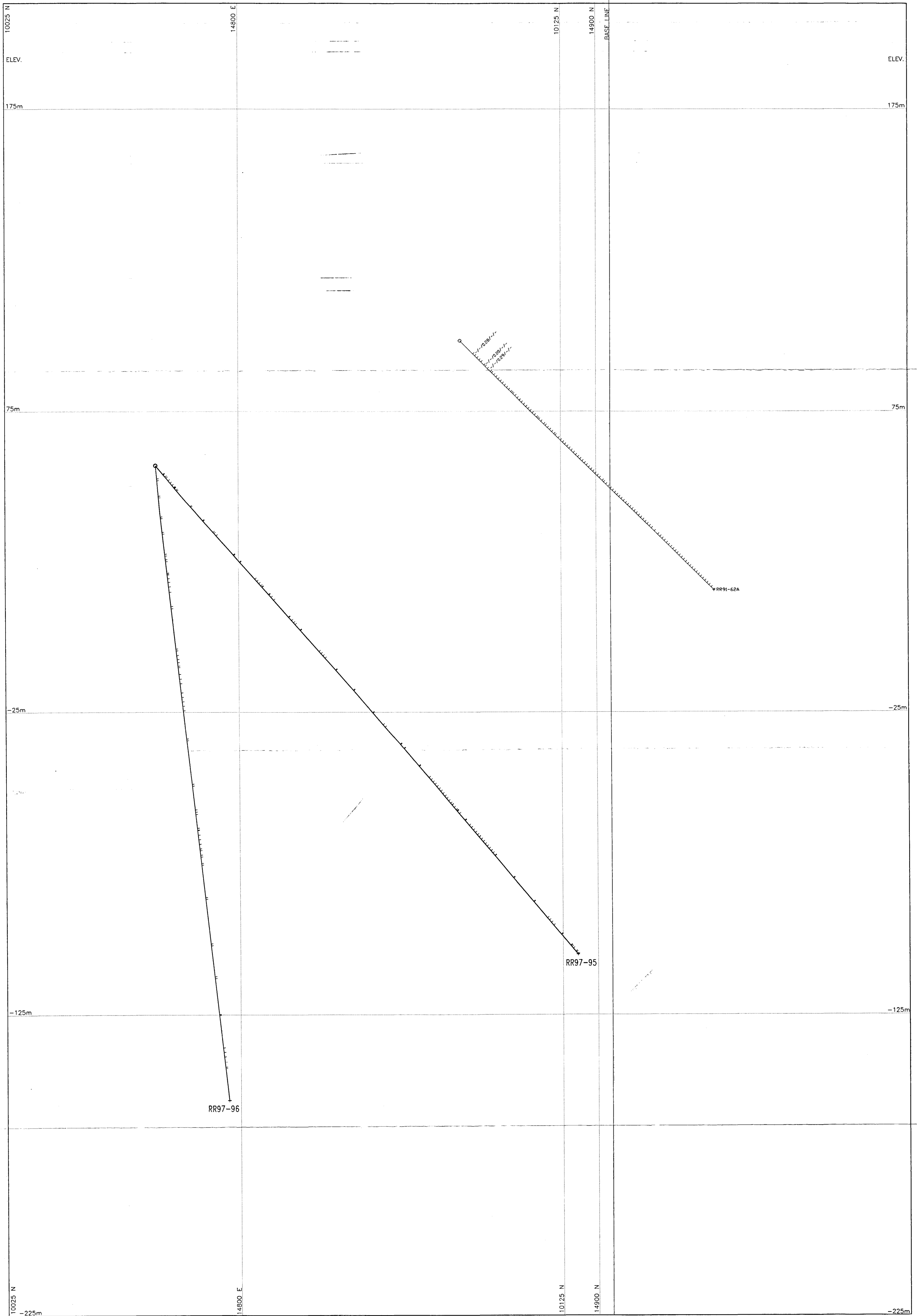
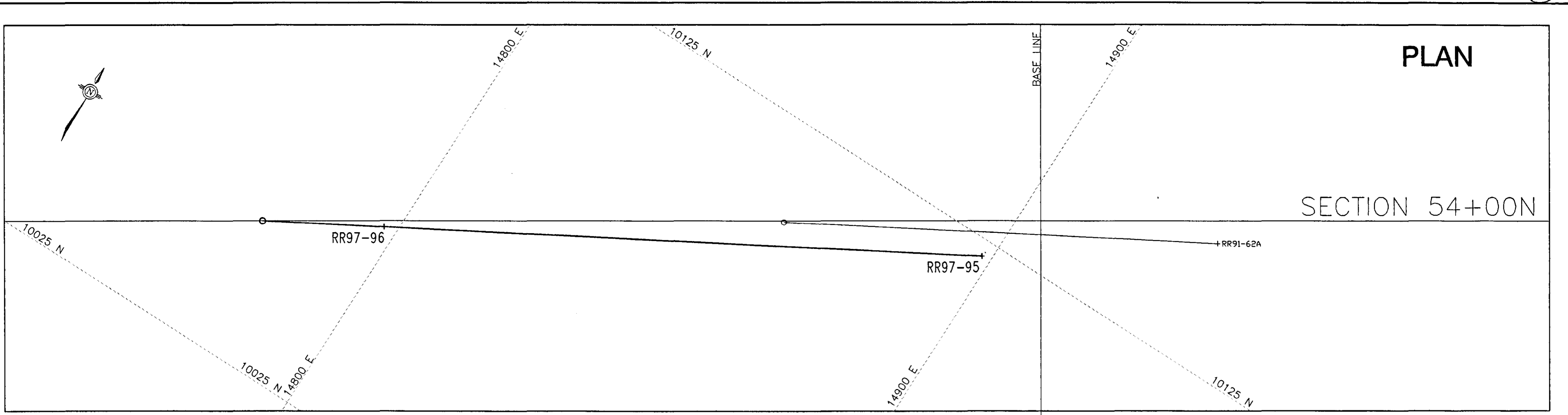
**ASSAYS**

M.A.P.B.

PAMICON DEVELOPMENTS LIMITED				
SCALE:	DATE:	NTS:	GEOLOGIST:	FIGURE:
1:500	NOV. 4, 1997	103J/3E	J.K. DUNNING	15

PLAN

SECTION 54+00N



LEGEND

- Cut Grid Lines (150° Grid):
- Drill Hole Survey Coordinates:
- Diamond Drill Hole:
- Significant Assays: 

Au g/t	Ag g/t	Cu %	Pb %	Zn %
>0.1	>1.5	>0.15	>0.10	>0.15

GEOLOGICAL SURVEY BRANCH  
ASSESSMENT REPORT

25,221



REDSTAR RESOURCES CORPORATION

ROCK and ROLL PROJECT  
 LIARD MINING DIVISION, BRITISH COLUMBIA  
**DRILL SECTION 54+00 N**  
 Drill Holes: RR97-095/096  
 (Looking North)  
**ASSAYS**

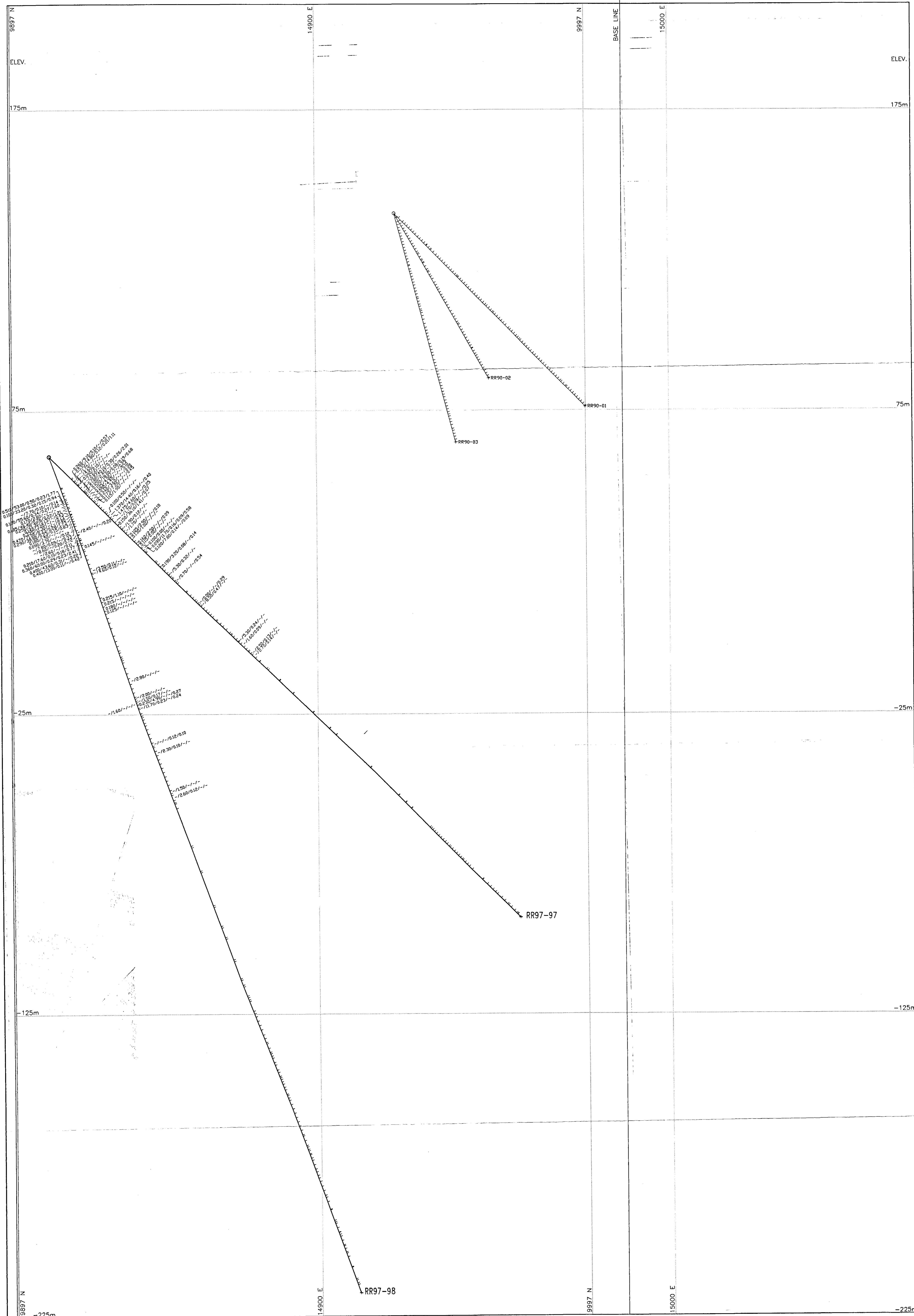
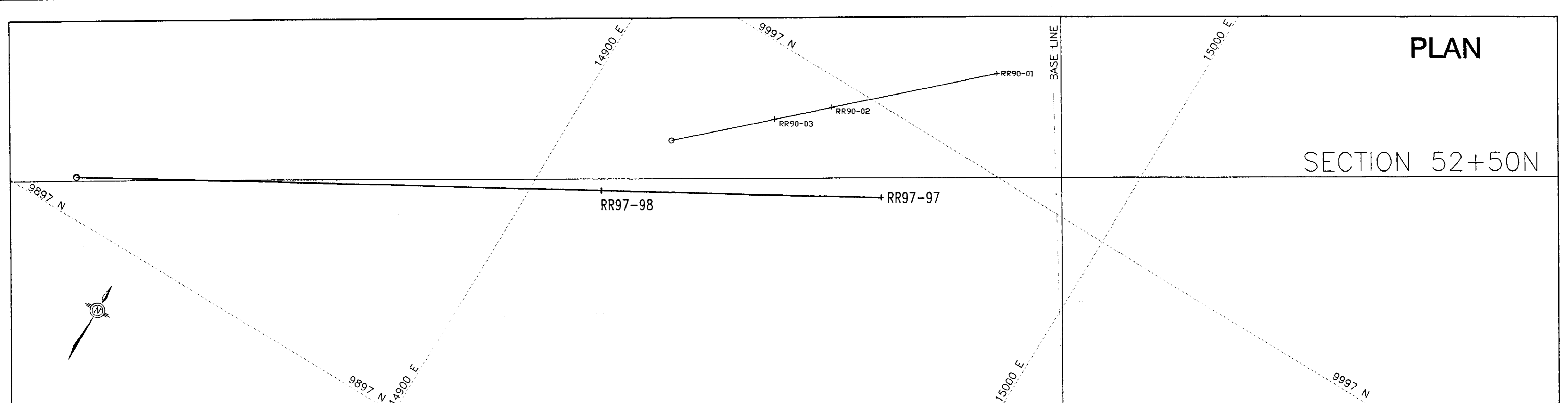
PAMICON DEVELOPMENTS LIMITED

SCALE:	DATE:	NTS:	GEOLOGIST:	FIGURE:
1:500	NOV.4, 1997	103J/3E	J.K. DUNNING	16



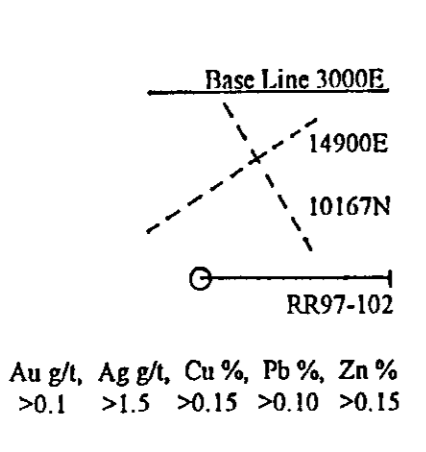
PLAN

SECTION 52+50N



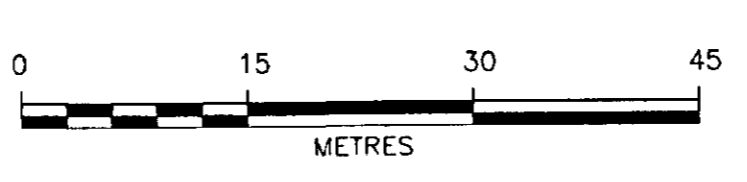
LEGEND

- Cut Grid Lines (150° Grid):
- Drill Hole Survey Coordinates:
- Diamond Drill Hole:
- Significant Assays:



GEOLOGICAL SURVEY BRANCH  
ASSESSMENT REPORT

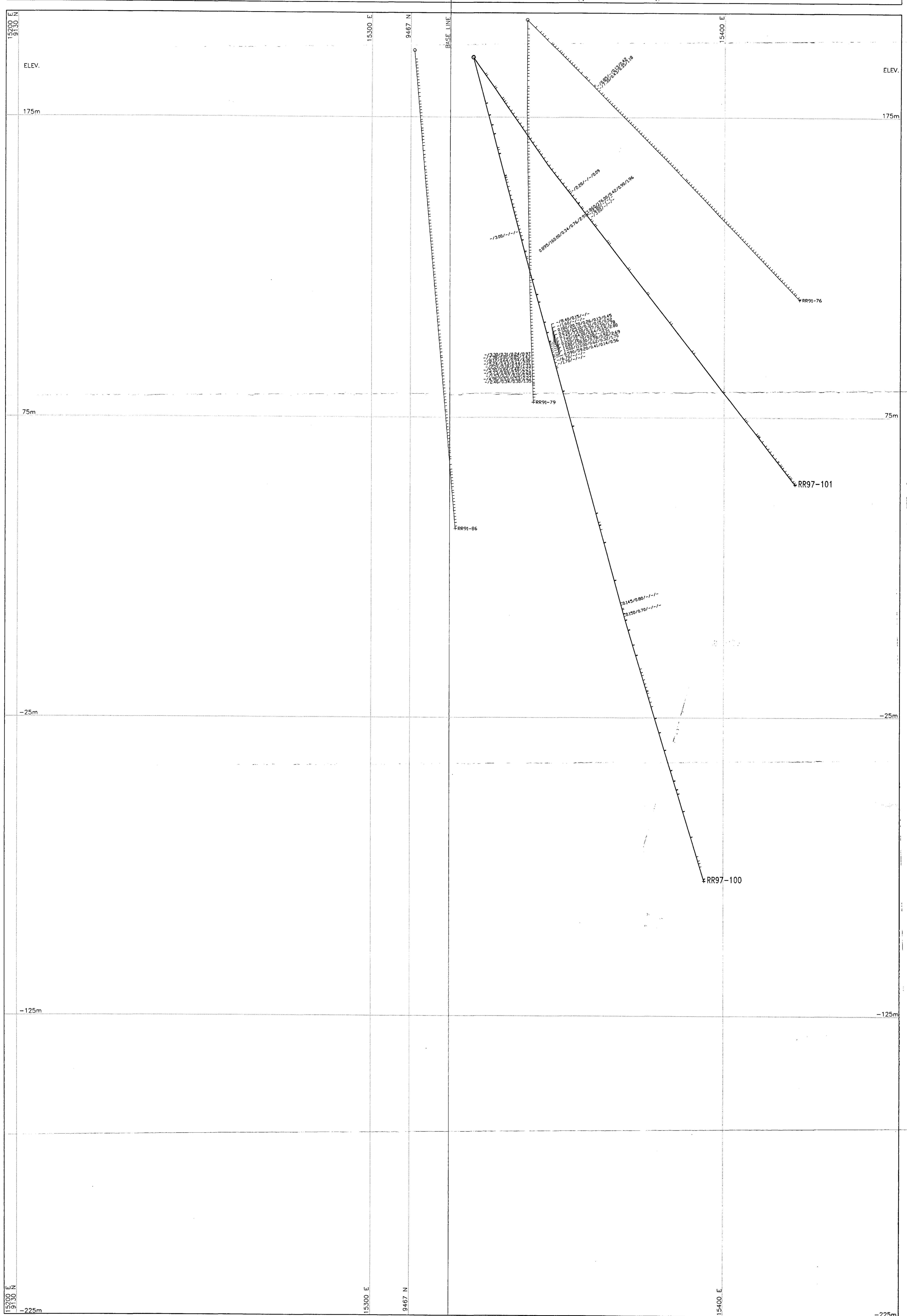
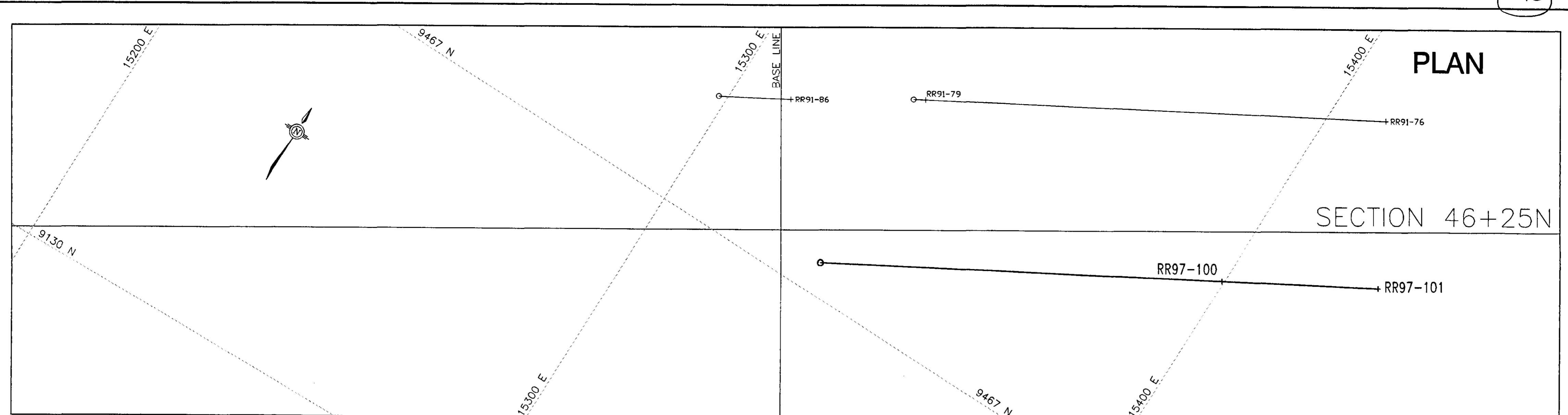
25,221



REDSTAR RESOURCES CORPORATION  
**ROCK and ROLL PROJECT**  
 LIARD MINING DIVISION, BRITISH COLUMBIA  
**DRILL SECTION 52+50 N**  
 Drill Holes: RR97-097/098  
 (Looking North)

**PAMICON DEVELOPMENTS, LIMITED**

SCALE: 1:500	DATE: NOV.4, 1997	NTS: 103J/3E	GEOLOGIST: J.K. DUNNING	FIGURE: 18
-----------------	----------------------	-----------------	----------------------------	---------------



LEGEND

- Cut Grid Lines (150° Grid):
- Drill Hole Survey Coordinates:
- Diamond Drill Hole:
- Significant Assays: 

Au g/t	Ag g/t	Cu %	Pb %	Zn %
>0.1	>1.5	>0.15	>0.10	>0.15

GEOLOGICAL SURVEY BRANCH  
ASSESSMENT REPORT

25,221

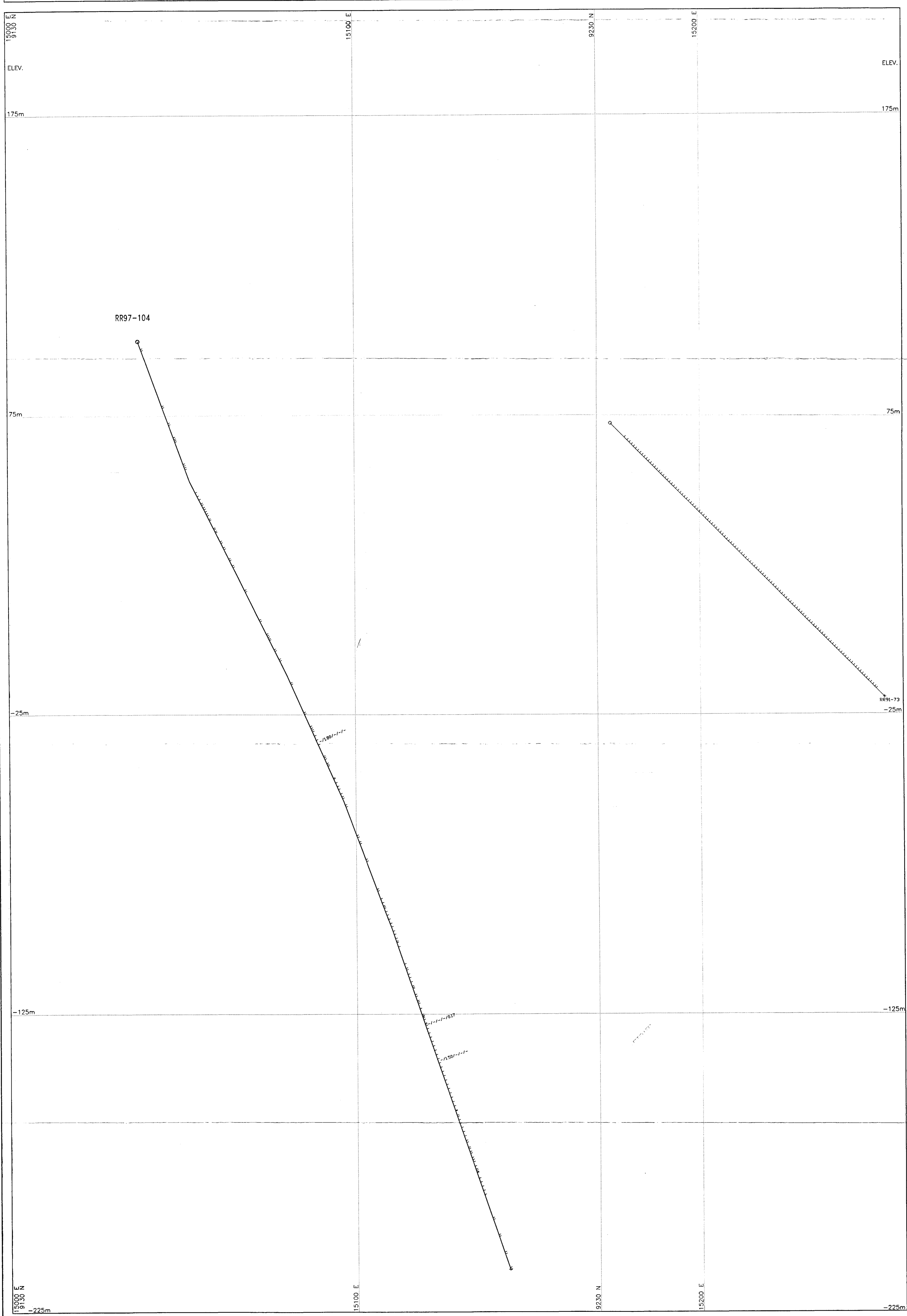
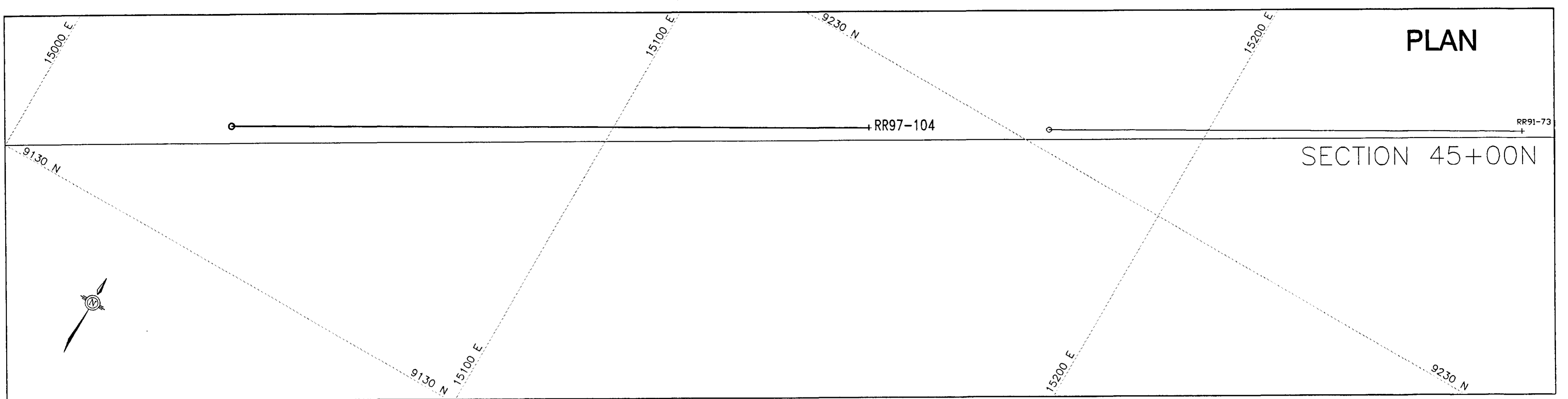


**REDSTAR RESOURCES CORPORATION**  
**ROCK and ROLL PROJECT**  
 LIARD MINING DIVISION, BRITISH COLUMBIA  
**DRILL SECTION 46+25 N**  
 Drill Holes: RR97-100/101  
 (Looking North)  
**ASSAYS**

**PAMICON DEVELOPMENTS LIMITED**

SCALE: 1:500	DATE: NOV.4, 1997	NTS: 103J/3E	GEOLOGIST: J.K. DUNNING	FIGURE: 19
-----------------	----------------------	-----------------	----------------------------	---------------





**LEGEND**

Cut Grid Lines (150° Grid):

Drill Hole Survey Coordinates:

Diamond Drill Hole:

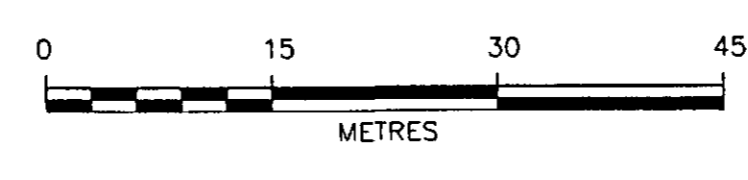
Significant Assays:

Base Line 3000E  
14900E  
10167N  
RR97-102

As g/t, Ag g/t, Cu %, Pb %, Zn %  
>0.1 >1.5 >0.15 >0.10 >0.15

GEOLOGICAL SURVEY BRANCH  
ASSESSMENT REPORT

25,221



**REDSTAR RESOURCES CORPORATION**

**ROCK and ROLL PROJECT**  
LIARD MINING DIVISION, BRITISH COLUMBIA

**DRILL SECTION 45+00 N**  
Drill Hole: RR97-104  
(Looking North)

**ASSAYS** MAPB

**PAMICON DEVELOPMENTS LIMITED**

SCALE: 1:500	DATE: NOV. 4, 1997	NTS: 103J/3E	GEOLOGIST: J.K. DUNNING	FIGURE: 20
-----------------	-----------------------	-----------------	----------------------------	---------------