



**GEOLOGICAL LEGEND**

- Q glacial till; alluvium
- Jbt Jurassic Bowser Lake Group sediments

- 138 mass mat or silt Geochemical Sample
- + Geology Station

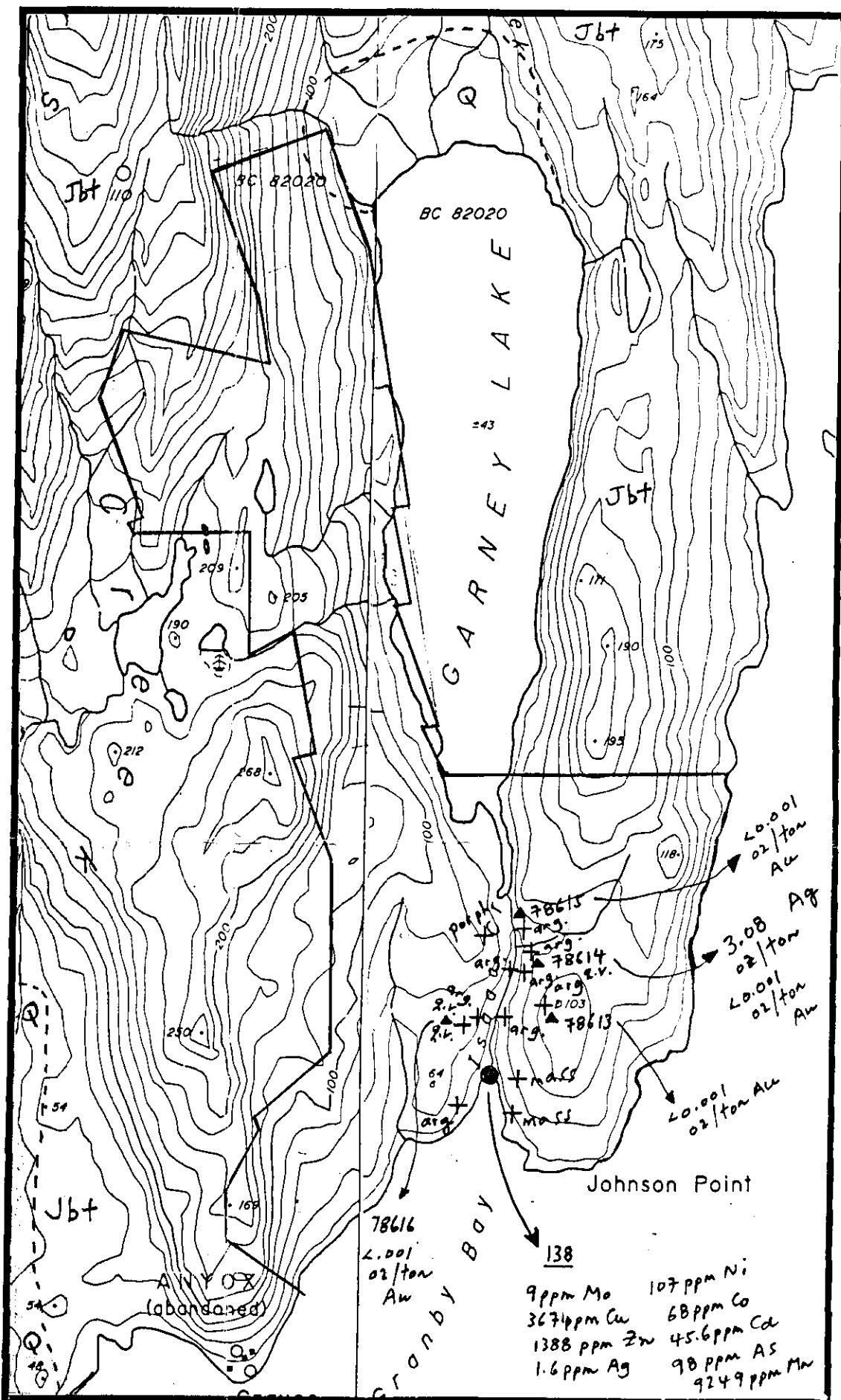
- ▲ Rock Sample 78614
- outcrops
- arg - dark grey argillite
- porph - feldspar porphyry
- q.v. - quartz veins
- mass - massive rock

notes  
 rock sample 78614 from quartz vein with no visible mineralization

Topographic Information from Surveys & Mapping - EMR

Claim Location Information from Mineral Titles Maps

Base Geology after Evenchick et al; 1997



**CARNEY LAKE CLAIM GROUP**

**COMPOSITE MAP**

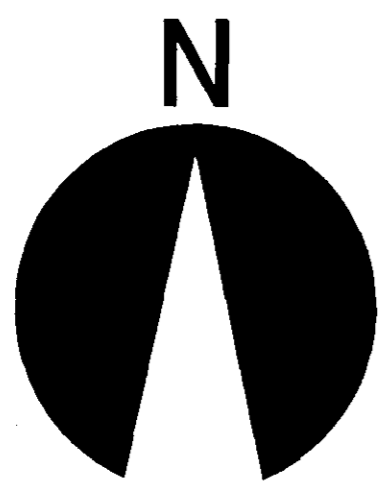
SKEENA MINING DIVISION  
 NTS: 103P/5W



**FIG. 6-1A**

GEOLOGICAL SURVEY BRANCH  
 ASSESSMENT REPORT

25,338



**GEOLOGICAL  
LEGEND**

- Q glacial till; alluvium
- ETH Eocene Hyder Pluton intrusive rocks
- Jbt Jurassic Bowser Lake Group sediments
- Jm Jurassic Bowser Lake Group metasediments & metavolcanics
- JHv Lower(?) to Lower Middle Jurassic Hazelton Group metasediments
- Djcg Devonian to Jurassic Clashmore Complex strained granite

● 119 Geochemical Sample *mass mat or silt*

+ Geology Station

■ Regional Geochemical Stream Sample

outcrops

- o. b.* - overburden
- sed.* - dark grey sediments
- cont.* - sediment/intrusive contact
- gr.* - granite

notes

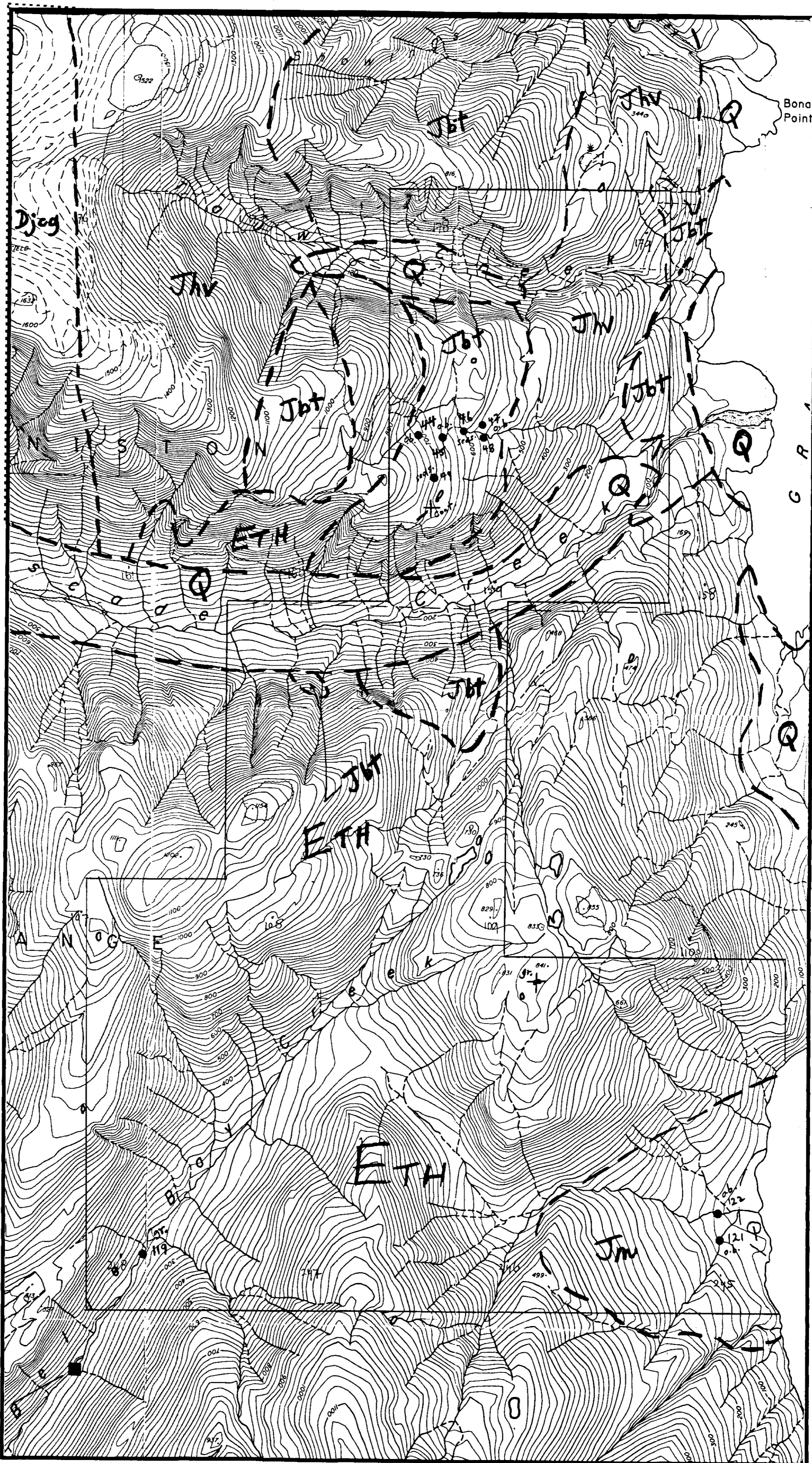
Anomalous geochemical samples:  
 #44 - 113 ppm Cr; #45 - 131 ppm Cr;  
 #46 - 94 ppm Cr; #47 - 133 ppm Cr + 96 ppm V;  
 #48 - 105 ppm Cr + 53 ppm Co;  
 #49 - 157 ppm Cr; #122 - 4 ppm W + 4 ppm Bi.

All samples < 1 ppb. Au  
 Topographic Information from Surveys & Mapping - EMR

Claim Location Information from Mineral Titles Maps

Base Geology after Evenchick et al; 1997

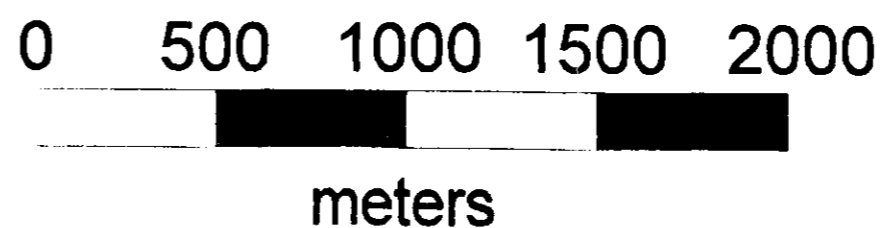
Regional Geochem. Stream Anomaly 57 ppb. Au.



**BELLE BAY CLAIM GROUP**

**COMPOSITE MAP**

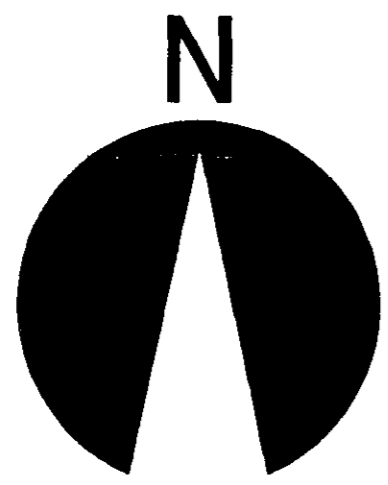
**SKEENA MINING DIVISION  
NTS: 103P/5W**



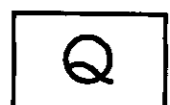
**FIG. 6-1B**

CLAIM SURVEY BRANCH  
ASSESSMENT REPORT

25,338



**GEOLOGICAL  
LEGEND**



glacial till; alluvium

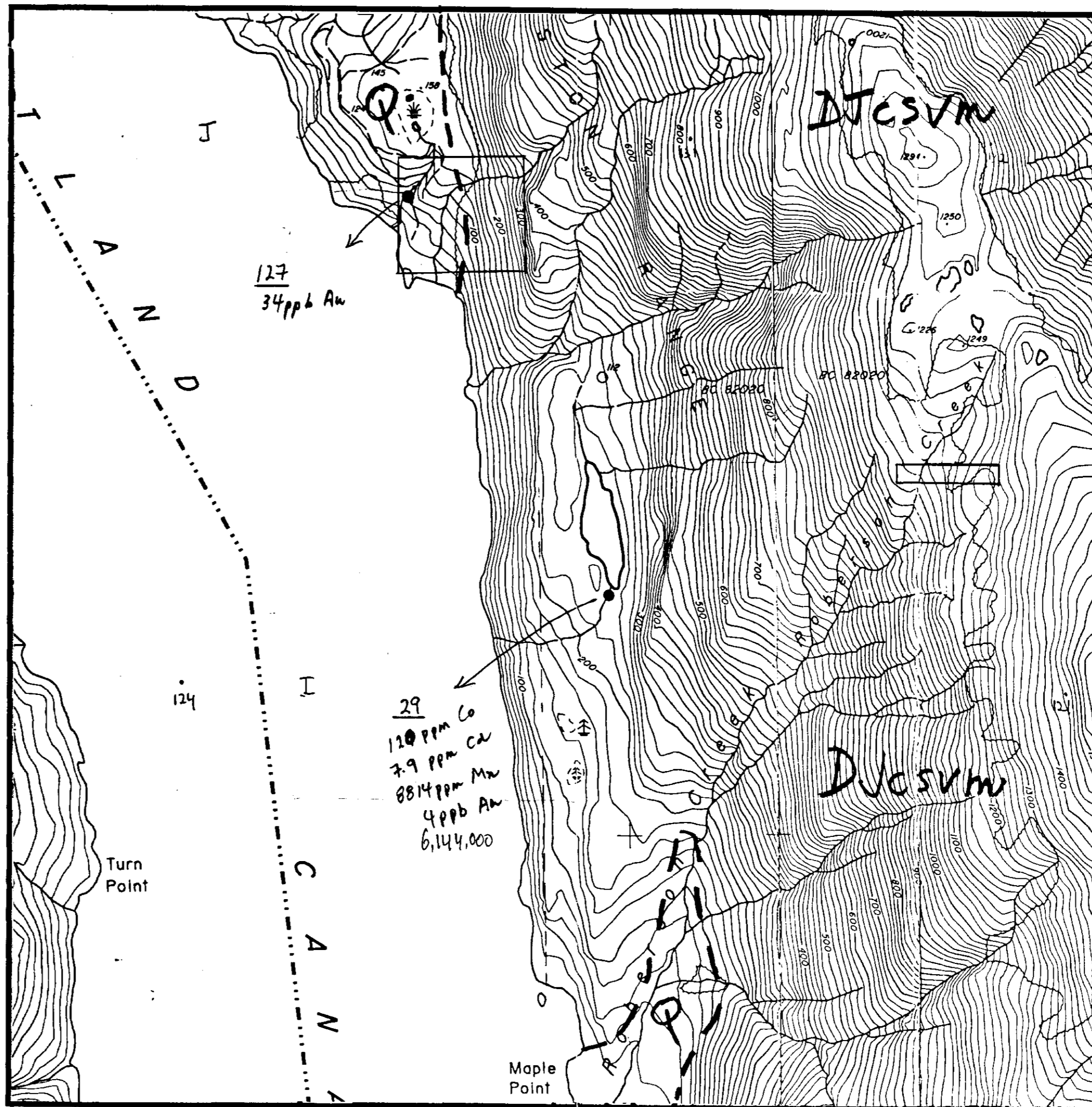


Devonian to Jurassic  
Clashmore Complex  
strained granite

• **127**

Geochemical  
Sample

moss  
mat  
or  
silt



*Topographic Information from  
Surveys & Mapping - EMR*

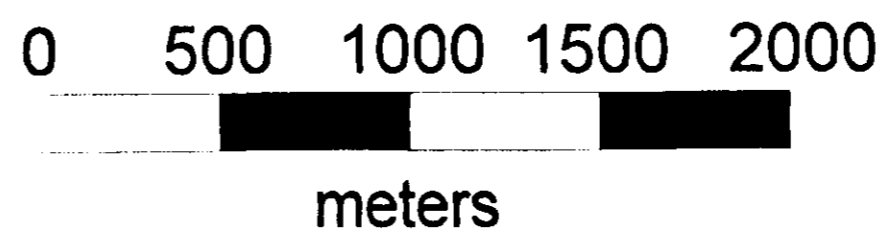
*Claim Location Information  
from Mineral Titles Maps*

*Base Geology after  
Evenchick et al; 1997*

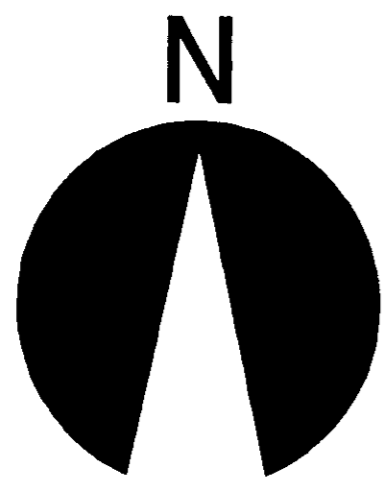
**CLOSE CLAIM GROUP & GAP 4 CLAIM**

**COMPOSITE MAP**

**SKEENA MINING DIVISION  
NTS: 1030/8E**



**FIG. 6-1C**



### GEOLOGICAL LEGEND

- Q glacial till; alluvium
- ETH Eocene Hyder Pluton intrusive rocks
- Jbt Jurassic Bowser Lake Group sediments
- JHv Lower(?) to Lower Middle Jurassic Hazelton Group metasediments

● **103** Geochemical Sample  
*moss mat or silt*

+ **E3** Geology Station

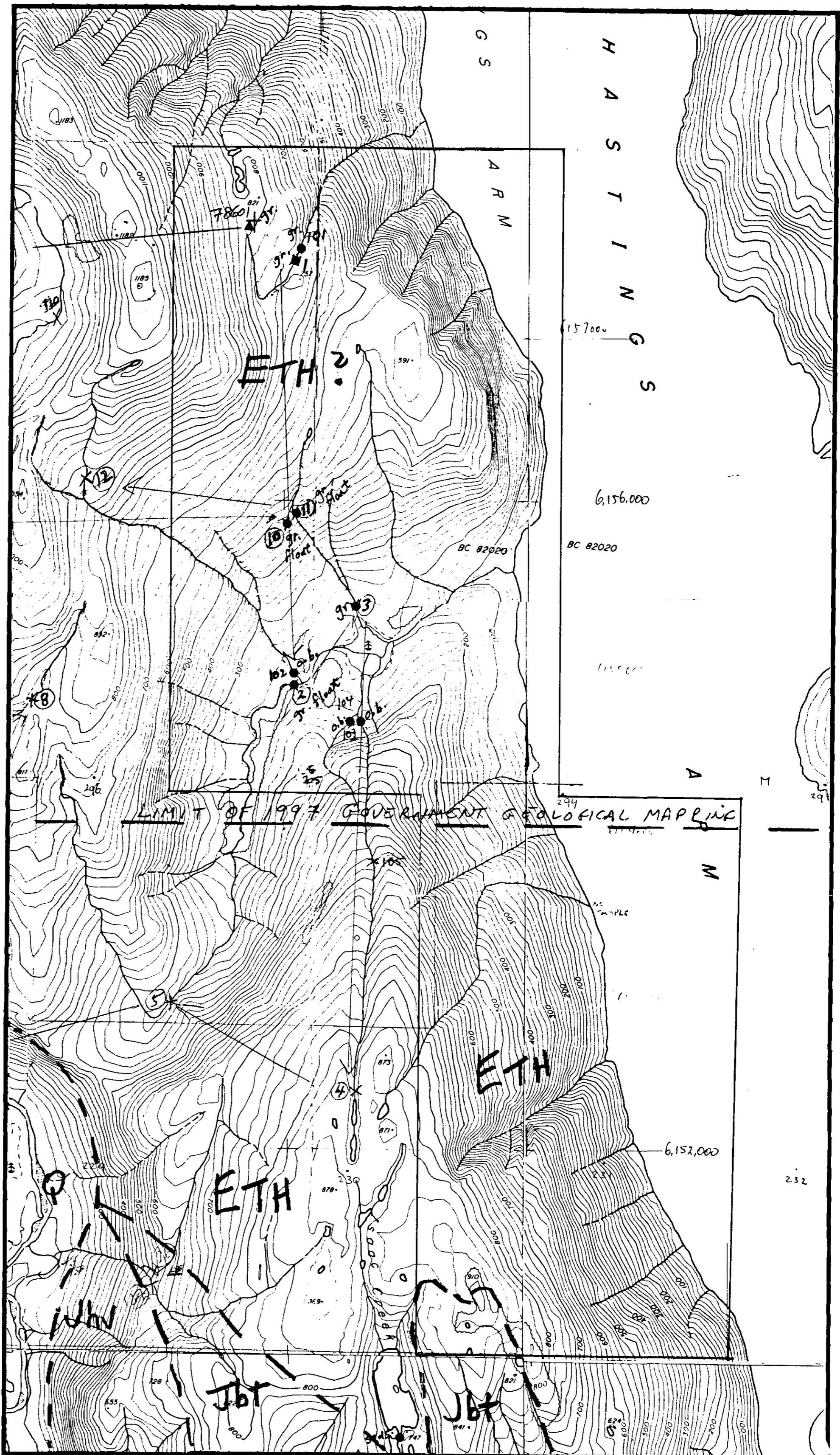
▲ **78601** Rock Sample  
*outcrops*

*gr - granite*  
*gr float - granite boulders*  
*o.b. - overburden*

*Seds - fine dark grey banded sediments*

*notes*

*all geochemical samples < 2ppb Au.*  
*#1 - 42ppm Mo; #2 - 4ppm Bi; #3 - 24ppm Mo; 4ppm Bi*  
*#10 - 32ppm Mo + 3ppm Bi; #11 - 36ppm Mo + 3ppm Bi;*  
*#101 - 45ppm Mo; #103 - 13ppm Mo;*  
*#104 - 17ppm Mo*



*Topographic Information from  
Surveys & Mapping - EMR*

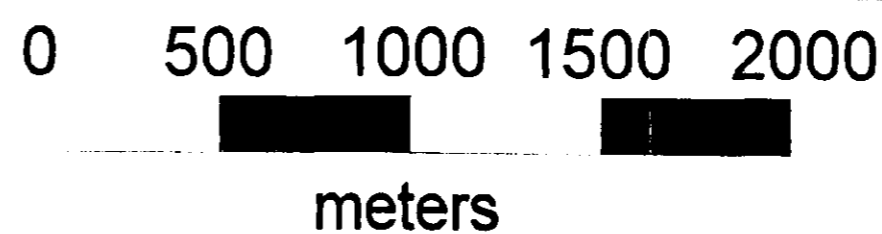
*Claim Location Information  
from Mineral Titles Maps*

*Base Geology after  
Evenchick et al; 1997*

## HASTINGS CLAIM GROUP

### COMPOSITE MAP

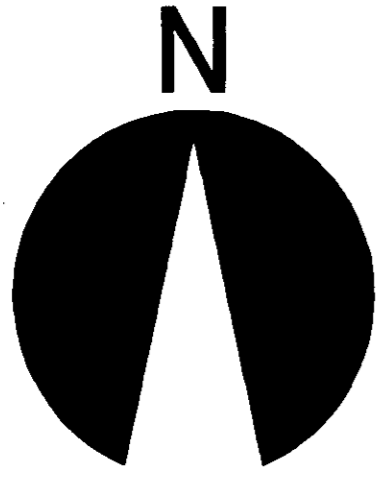
**SKEENA MINING DIVISION**  
**NTS: 103P/5W; 103P/12W**



**FIG. 6-1D**

ASSESSMENT REPORT

25,338



**GEOLOGICAL  
LEGEND**

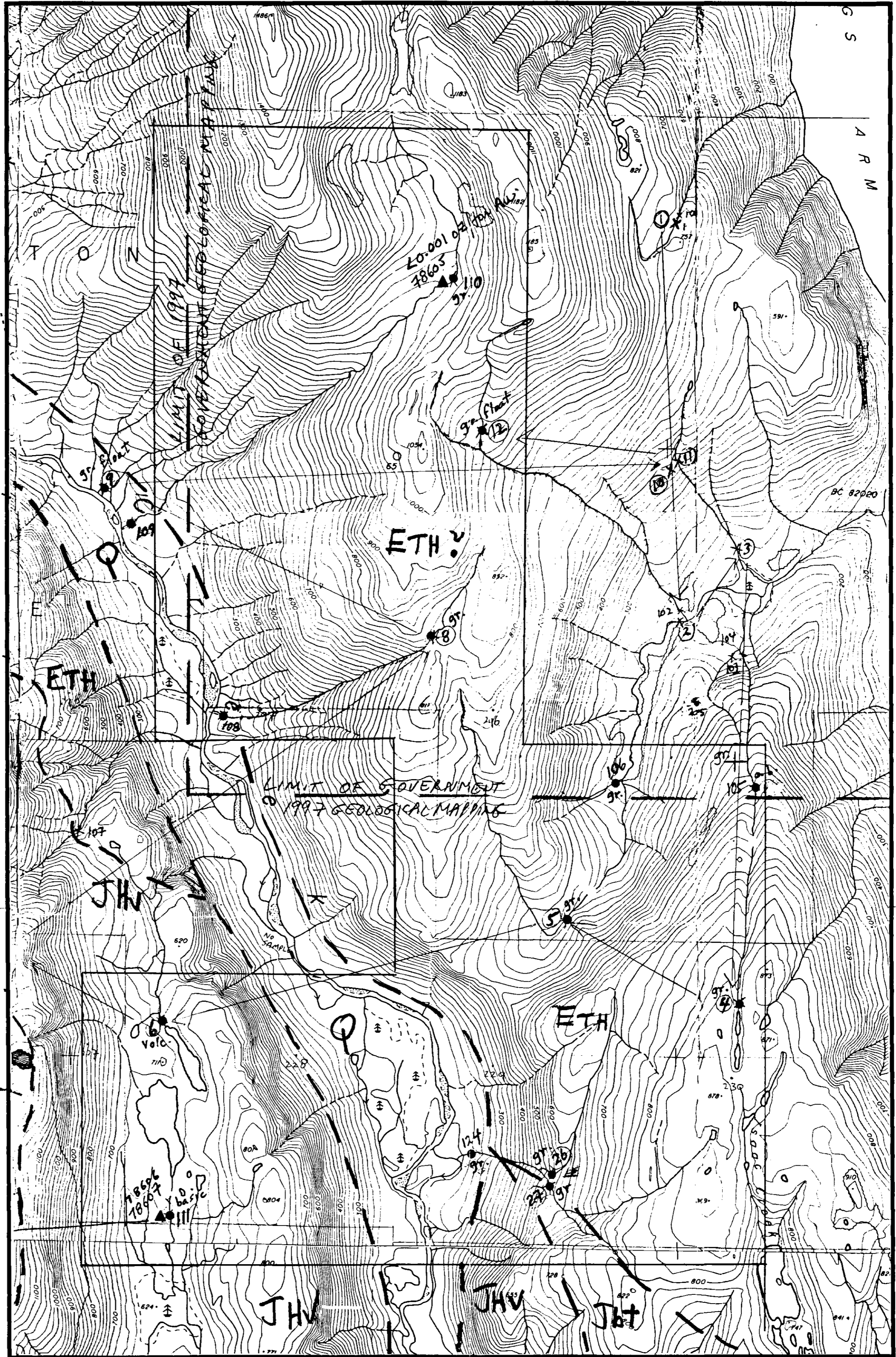
- Q glacial till; alluvium
- ETH Eocene Hyder Pluton intrusive rocks
- Jbt Jurassic Bowser Lake Group sediments
- JHv Lower(?) to Lower Middle Jurassic Hazelton Group metasediments
- DJcg Devonian to Jurassic Clashmore Complex strained granite

- 111 Geochemical Sample *mass mat or silt*
- ▲ 78605 Rock Sample
- +
- Geology Station

- outcrops*
- gr. - granite
  - volc. - siliceous volcanic
  - gr. float - granite boulders
  - o.b. - overburden
  - basic - basic dyke

DJcg

massive  
basic  
rock (78607)  
20.001 oz/ton Au  
10 cm. quartz vein  
(78606)  
20.001 oz/ton Au



Topographic Information from  
Surveys & Mapping - EMR

Claim Location Information  
from Mineral Titles Maps

Base Geology after  
Evenchick et al; 1997

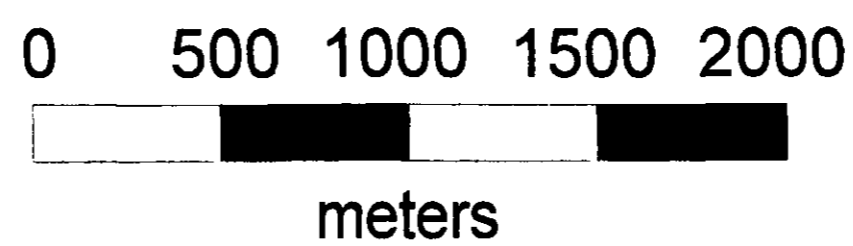
*notes*

anomalous geochemical samples:  
#5 - 93 ppm V + 4 ppm Bi; #6 - 247 ppm Cu + 0.9 ppm Ag + 92 ppm Co + 4 ppm W;  
#8 - 4 ppm Bi + 3419 ppm Mn; #9 - 233 ppm V + 4 ppm W;  
#12 - 20 ppm Mo; #26 - 3 ppm Bi; #109 - 115 ppm V + 65 ppm U;  
#110 - 24 ppm Mo; #111 - 345 ppm Cu + 565 ppm Zn + 392 ppm Co + 9.7 ppm Cd + 495 ppm Mn  
#124 - 3 ppm Bi. All geochem. samples < 2 ppb Au.

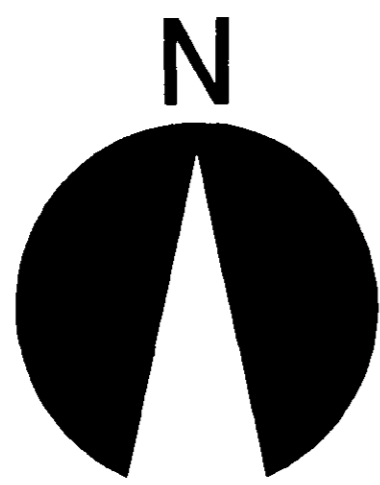
**ANYOX CLAIM GROUP**

**COMPOSITE MAP**

**SKEENA MINING DIVISION  
NTS: 103P/5W; 103P/12W**



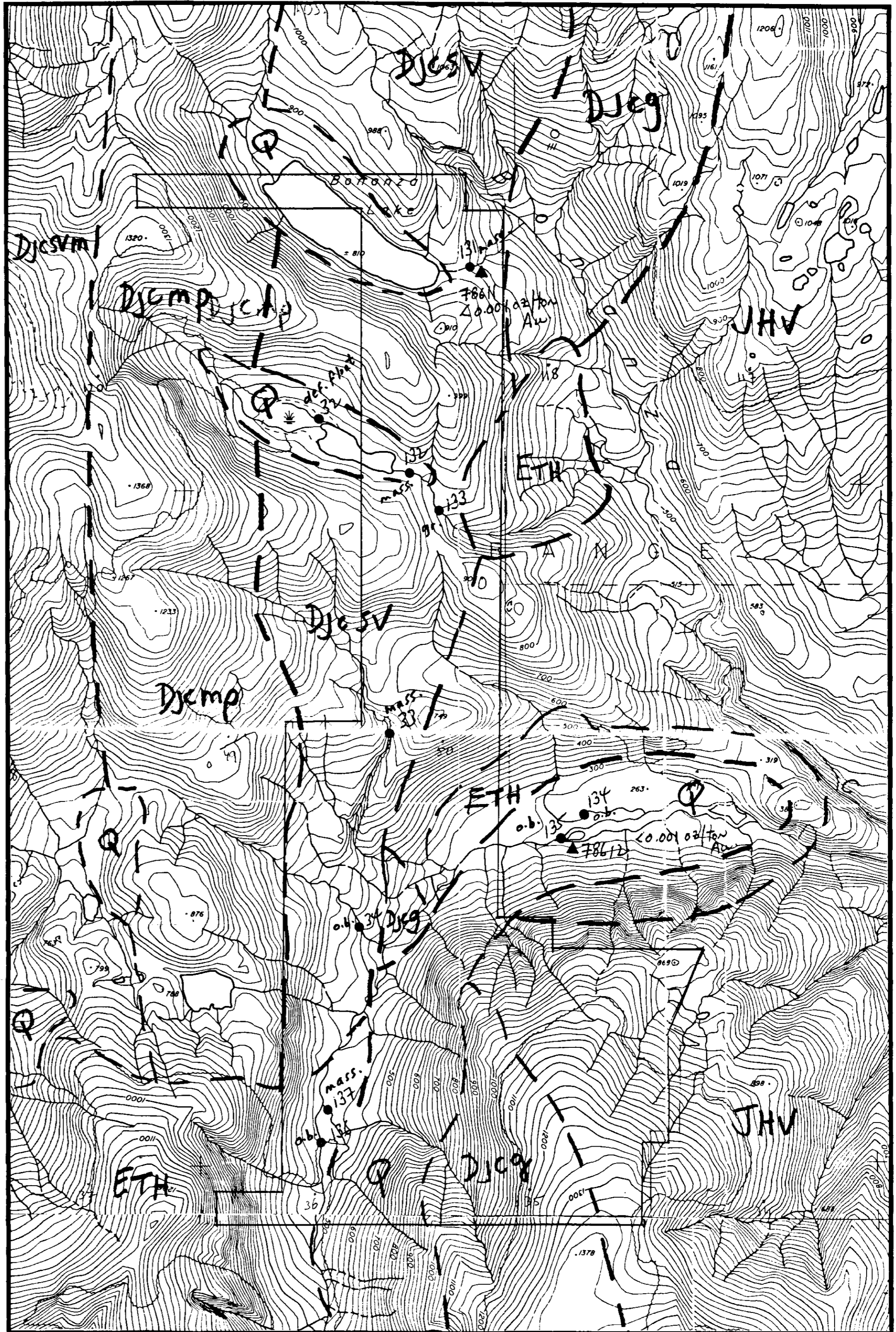
**FIG. 6-1E**



**GEOLOGICAL  
LEGEND**

- Q glacial till; alluvium
- ETH Eocene Hyder Pluton  
intrusive rocks
- JHV Lower(?) to Lower Middle  
Jurassic Hazelton Group  
metasediments
- DJcg Devonian to Jurassic  
Clashmore Complex  
strained granite
- Djcsvm Devonian to Jurassic  
Clashmore Complex  
metamorphosed rocks  
including minor marble
- Djcmp Devonian to Jurassic  
Clashmore Complex  
mafic intrusive rocks

- 134 Geochemical Sample *mass mat or silt*
- ▲ 78612 Rock Sample *outcrops*
- def. float - boulder of deformed intrusive & volcanic
- mass. - massive fine grained rock
- o.b. - over burden
- gr. - granite



*Topographic Information from  
Surveys & Mapping - EMR*

*Claim Location Information  
from Mineral Titles Maps*

*Base Geology after  
Evenchick et al; 1997*

Notes

*Anomalous geochemical samples*

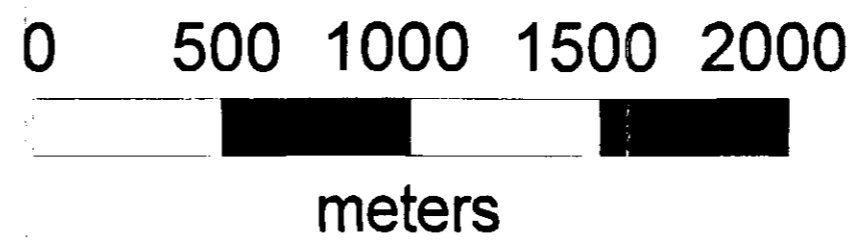
- #32 - 88 ppm Cr.
- #33 - 102 ppm Cr + 130 ppm V
- #34 - 120 ppm V + 3 ppm Bi
- #131 - 98 ppm Cr + 120 ppm V + 3.8 ppm Cd
- #132 - 89 ppm Ni + 103 ppm Cr + 132 ppm V + 61 ppm Co + 7.9 ppm Cu + 3165 ppm Mn.
- #133 - 98 ppm Ni + 103 ppm Cr + 121 ppm V + 54 ppm Co + 10.8 ppm Cu + 3028 ppm Mn.
- #134 - 115 ppm Cr + 141 ppm V
- #135 - 105 ppm V
- #136 - 96 ppm V
- #137 - 103 ppm V

*all geochemical samples < 2 ppb Au.*

**BONANZA CLAIM GROUP**

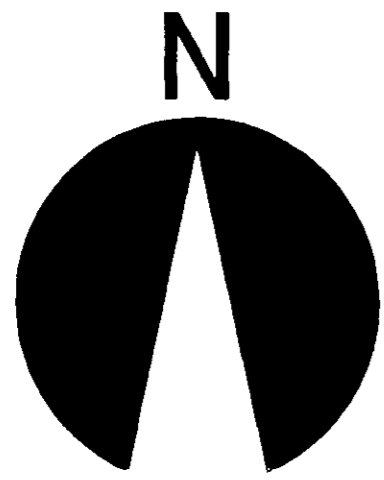
**COMPOSITE MAP**

**SKEENA MINING DIVISION  
NTS: 103P/5W**



**FIG. 6-1F**

25,338



**GEOLOGICAL  
LEGEND**

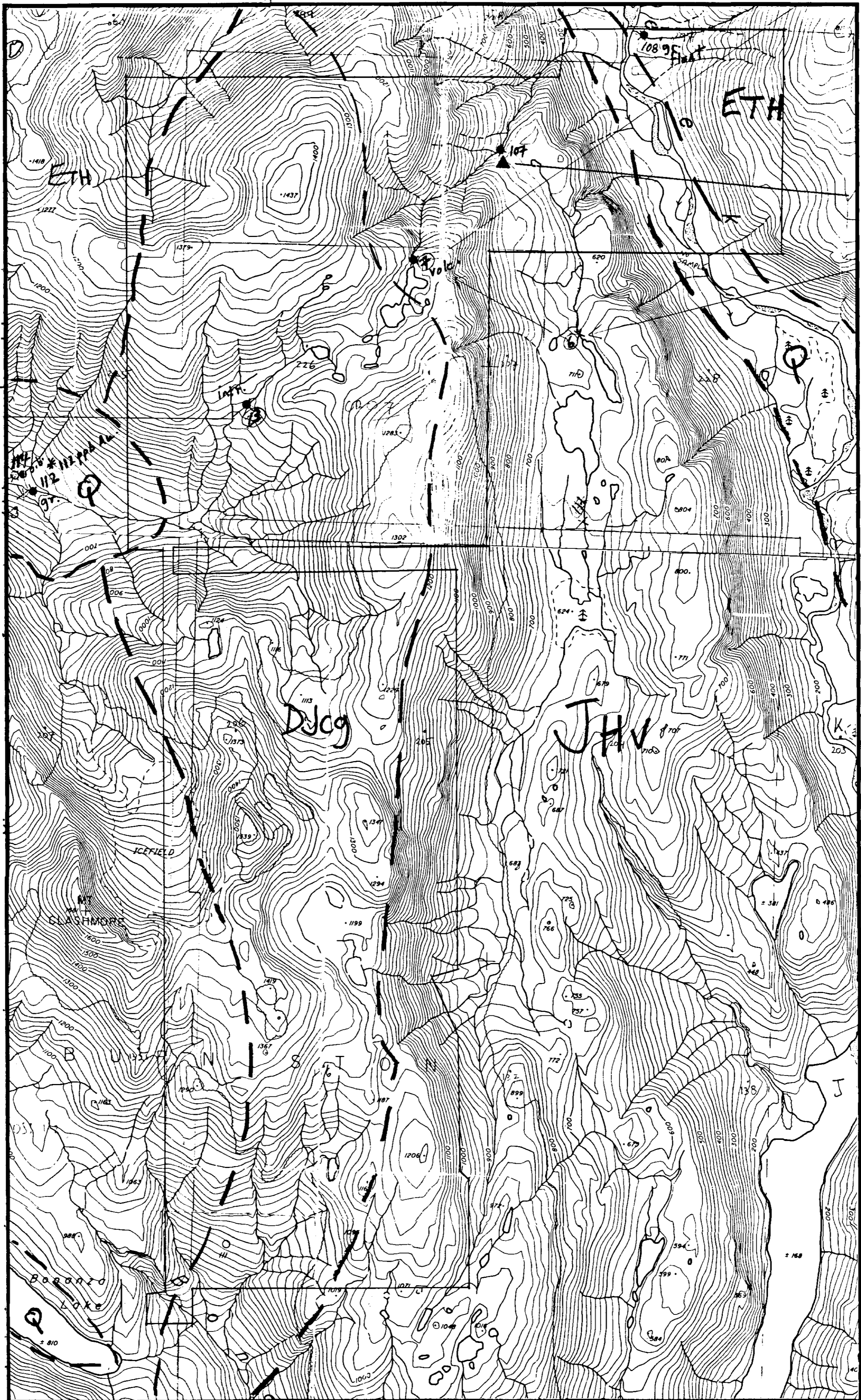
- Q glacial till; alluvium
- ETH Eocene Hyder Pluton intrusive rocks
- JHv Lower(?) to Lower Middle Jurassic Hazelton Group metasediments
- DJcg Devonian to Jurassic Clashmore Complex strained granite
- DJcsv Devonian to Jurassic Clashmore Complex metamorphosed rocks
- **108** Geochemical Sample *moss mat or silt*
- ▲ Rock Sample

*outcrops*  
 volc - lt grey volcanic rock with minor py.  
 intr - well-foliated biotite rich intrusive  
 gr - granite  
 gr. float - granitic boulders  
 o.b. - overburden

*Topographic Information from  
 Surveys & Mapping - EMR*

*Claim Location Information  
 from Mineral Titles Maps*

*Base Geology after  
 Evenchick et al; 1997*



→ 78602  
 basic rock  
 with scattered  
 quartz veins  
 78603  
 1cm granitic "vein"  
 in basic rock  
 78604  
 volcano with  
 pyrite topote  
 all rock samples  
 < 0.001 oz/ton Au.

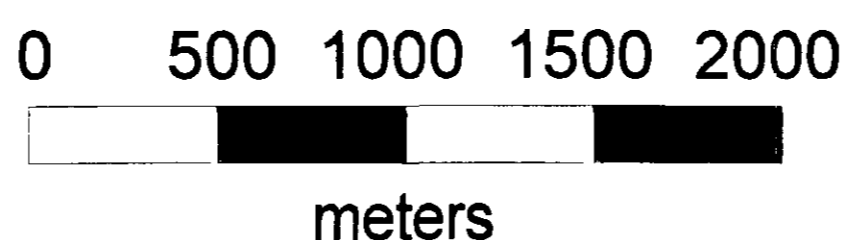
*Notes: Anomalous geochemical samples:  
 #7 - 162 ppm Cu, 122 ppm Pb, 92 ppm Cr, 4 ppm Bi  
 #13 - 49 ppm Co,  
 #107 - 100 ppm V  
 #108 - 176 ppm V  
 #112 - 112 ppb Au\**

*All geochemical samples  
 except #112 are < 2 ppb Au.*

**GLACIER CLAIM GROUP**

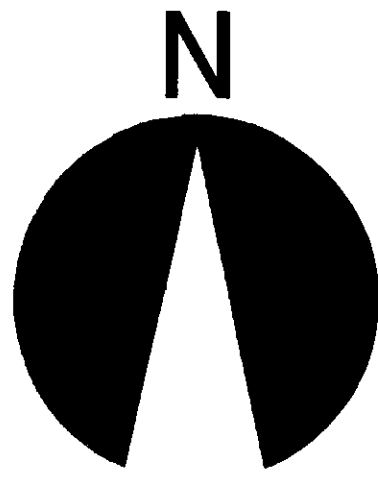
**COMPOSITE MAP**

**SKEENA MINING DIVISION  
 NTS: 103P/5W & 103P/12W**

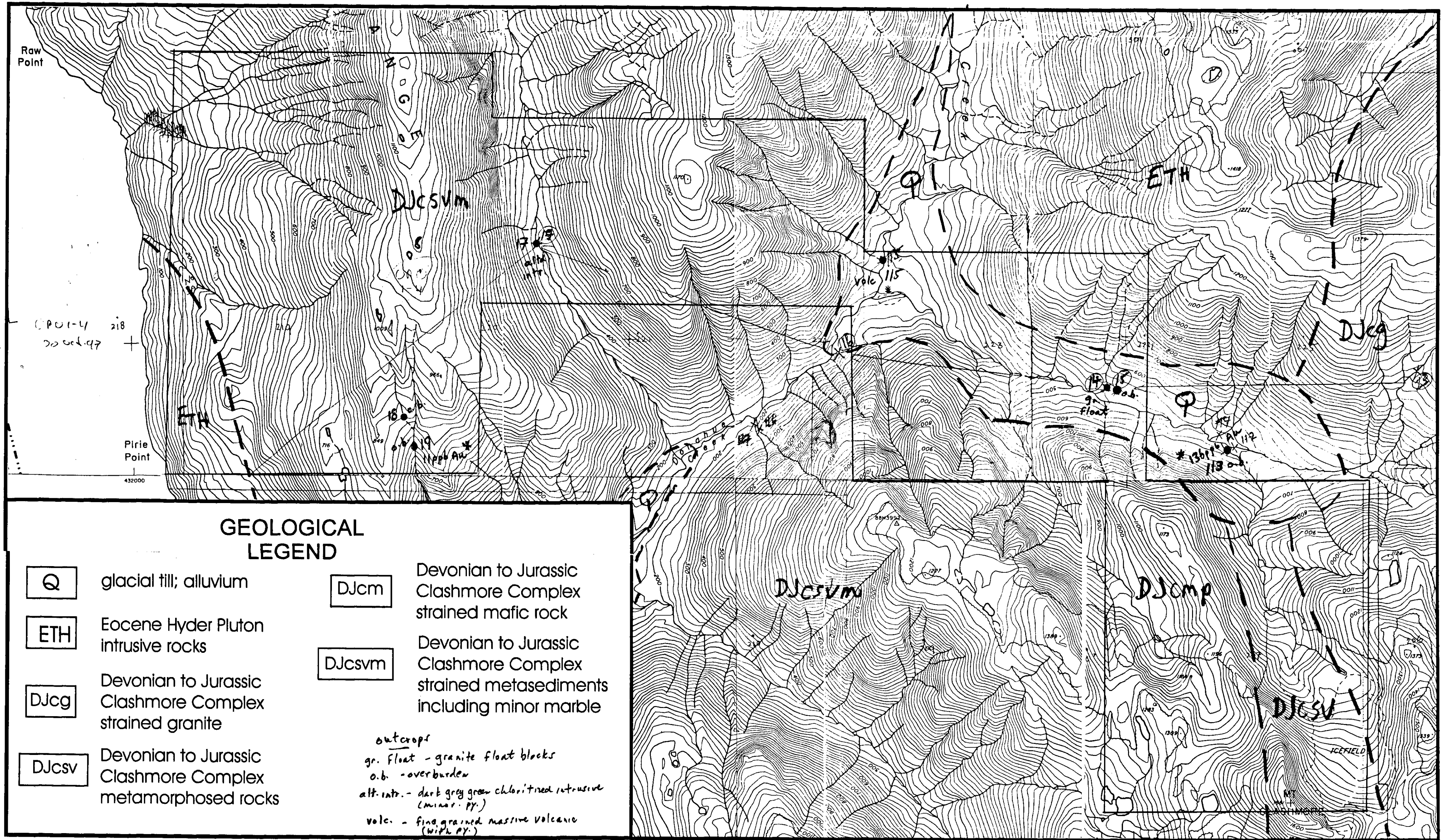


**FIG. 6-1G**

25.338



Notes:  
 anomalous  
 geochemical samples  
 #14 - 3.6 ppm Cd  
 #17 - 101 ppm V  
 #18 - 6 ppm W  
 #19 - 122 ppm V + 11 ppb Au\*  
 #113 - 0.9 ppm Ag  
 63 ppm As  
 10 ppm Sb  
 \* 136 ppb Au  
 #115 - 194 ppm Pb  
 129 ppm V  
 geochemical  
 samples other than  
 #19 & #113  
 < 2 ppb Au.



**GEOLOGICAL  
 LEGEND**

- |   |  |
|---|--|
| <b>Q</b> glacial till; alluvium   | <b>DJcm</b> Devonian to Jurassic Clashmore Complex strained mafic rock                             |
| <b>ETH</b> Eocene Hyder Pluton intrusive rocks                          | <b>DJcsvm</b> Devonian to Jurassic Clashmore Complex strained metasediments including minor marble |
| <b>DJcg</b> Devonian to Jurassic Clashmore Complex strained granite     |  |
| <b>DJcsv</b> Devonian to Jurassic Clashmore Complex metamorphosed rocks |  |

outcrops  
 gr. float - granite float blocks  
 o.b. - overburden  
 alt. intr. - dark grey green chloritised intrusive (minor py.)  
 volc. - fine grained massive volcanic (with py.)

Topographic Information from  
 Surveys & Mapping - EMR

Claim Location Information  
 from Mineral Titles Maps

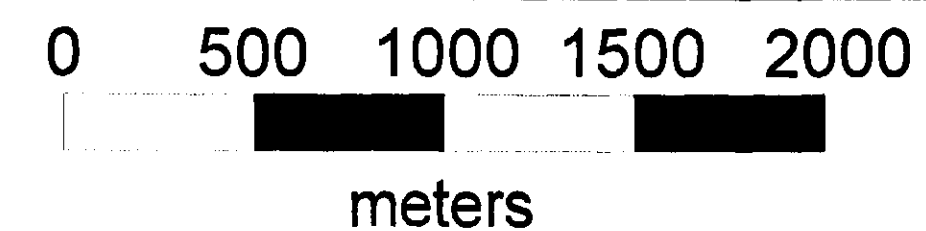
Base Geology after  
 Evenchick et al; 1997

● 14 Geochemical  
 Sample  
 mass mat  
 or sit

**DONAHUE CLAIM GROUP**

**COMPOSITE MAP**

**SKEENA MINING DIVISION**  
 NTS: 103P/5W; 103P/12W  
 103O/8E; 10EO/9E



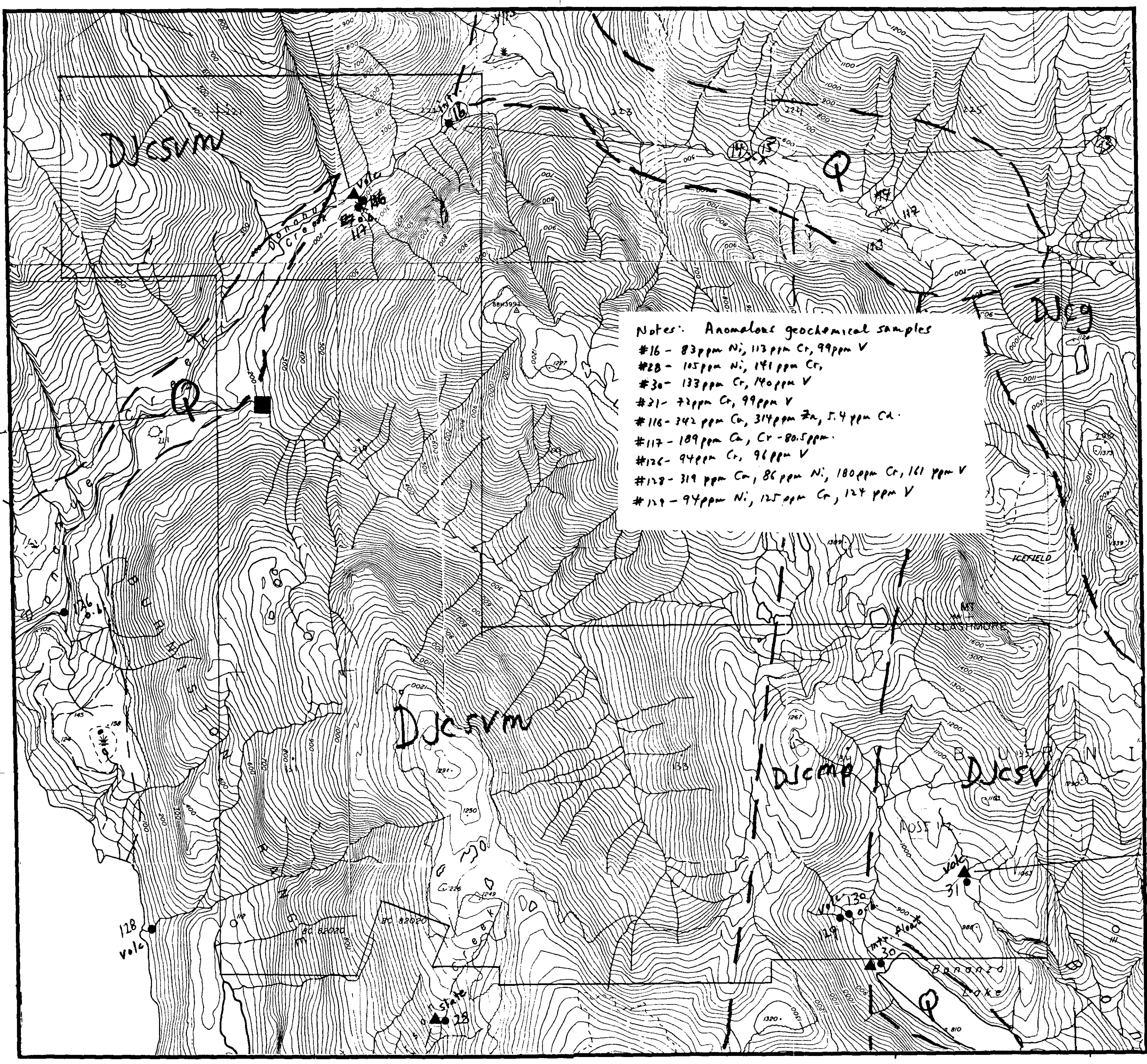
**Fig. 6-1H**

GEOLOGICAL SURVEY BRANCH  
 GCS/SGS/NTS REPORT

25.338



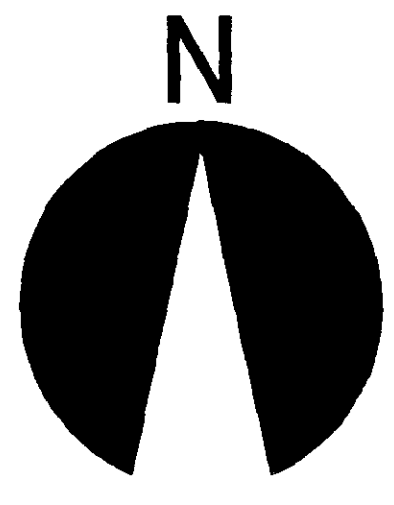
78608  
dark grey  
fine grained  
well-soliated  
rock  
20.001 oz/ton Au



Regional  
Stream  
Geochem.  
Anomaly  
313 ppb Au

Notes: Anomalous geochemical samples  
 #16 - 83 ppm Ni, 113 ppm Cr, 99 ppm V  
 #28 - 105 ppm Ni, 141 ppm Cr,  
 #30 - 133 ppm Cr, 140 ppm V  
 #21 - 72 ppm Cr, 99 ppm V  
 #116 - 342 ppm Cu, 314 ppm Zn, 5.4 ppm Cd.  
 #117 - 109 ppm Cu, Cr - 80.5 ppm.  
 #126 - 94 ppm Cr, 96 ppm V  
 #128 - 319 ppm Cu, 86 ppm Ni, 180 ppm Cr, 161 ppm V  
 #129 - 94 ppm Ni, 125 ppm Cr, 124 ppm V

7853  
60cm  
87% vein  
20.001 oz/ton Au



Topographic Information from  
Surveys & Mapping - EMR

Claim Location Information  
from Mineral Titles Maps

Base Geology after  
Evenchick et al; 1997

**GEOLOGICAL  
LEGEND**

- |       |  |        |   |
|-------|--|--------|---|
| Q     | glacial till; alluvium   | DJCSVM | Devonian to Jurassic<br>Clashmore Complex<br>strained metasediments<br>including minor marble |
| ETH   | Eocene Hyder Pluton<br>intrusive rocks                           | DJCG   | Devonian to Jurassic<br>Clashmore Complex<br>strained granite                                 |
| DJCSV | Devonian to Jurassic<br>Clashmore Complex<br>metamorphosed rocks |        |   |
- 126 Geochemical Sample  
 Rock Sample  
*outcrop*  
 intr. - biotite rich chloritized intrusive  
 slate - dark grey slaty sediments  
 intr. float - blocky intrusive float  
 volc. - med. grey green volcanic  
 ab. - overburden  
 mass mat  
 or silt.

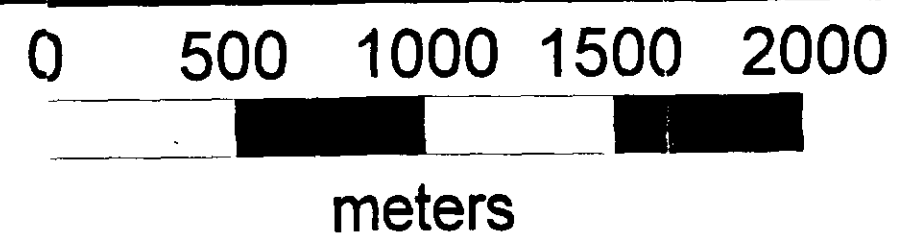
78551  
20cm. qtz. vein  
20.001 oz/ton Au.

78552  
quartz  
float  
20.001 oz/ton Au

**TOURNAY CLAIM GROUP**

**COMPOSITE MAP**

**SKEENA MINING DIVISION**  
 NTS: 103P/5W; 103P/12W  
 103O/8E; 103O/9E+

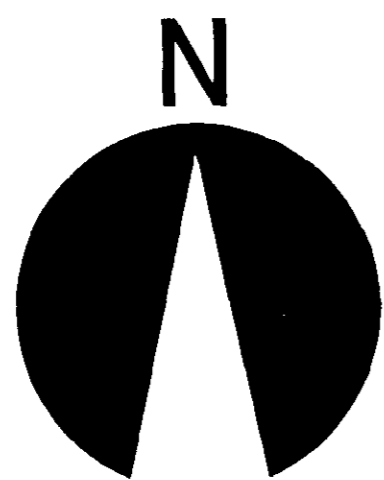
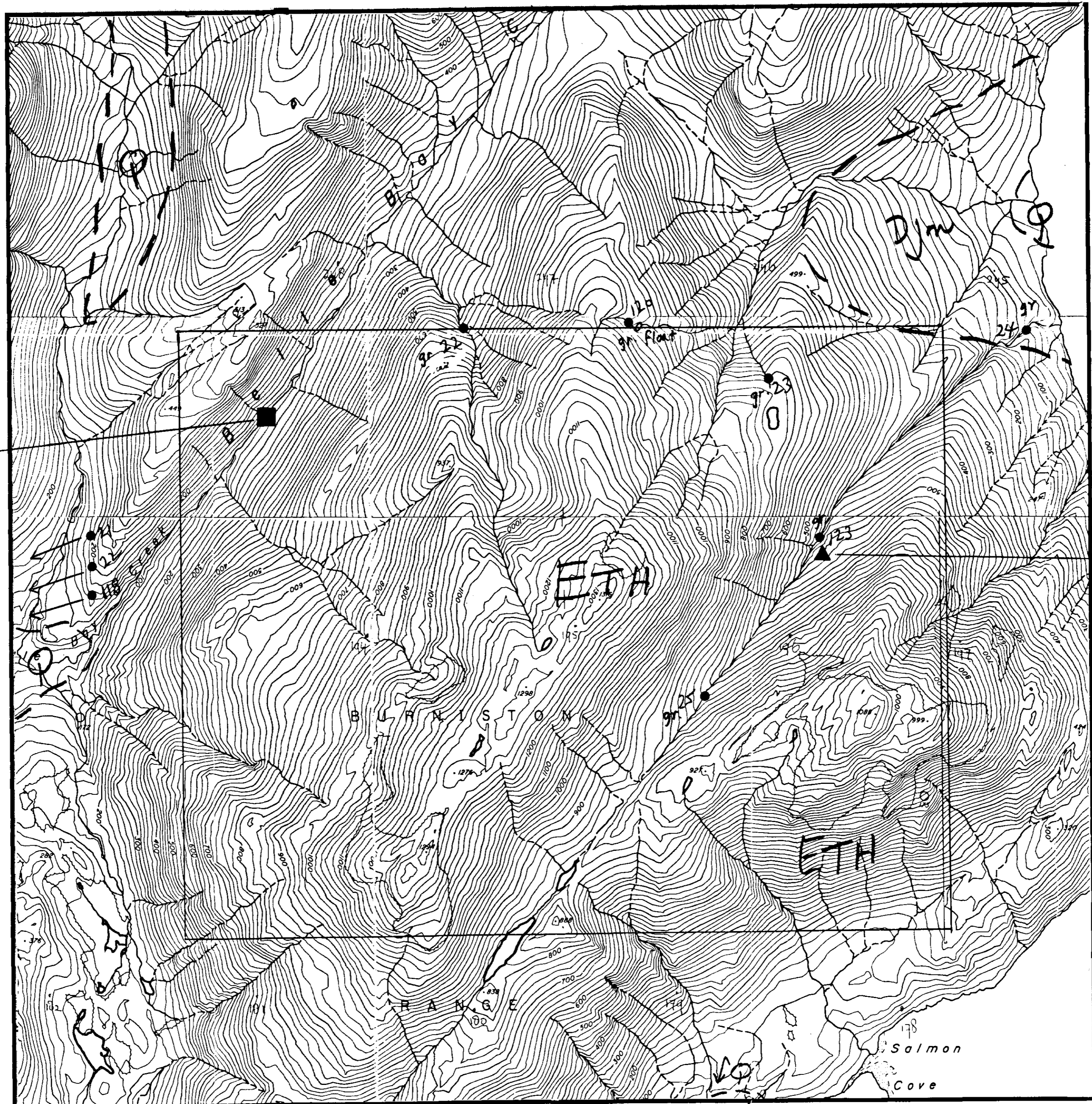


**FIG. 6-11**

GEOLOGICAL SURVEY BRANCH  
ASSESSMENT REPORT

25,338

Regional Stream Geomorph Anomaly 57 ppb Au



Notes: Anomalous geochemical samples:

- #21 - 1102 ppm V
- #22 - 91 ppm V
- #23 - 38 ppm U
- #118 - 96 ppm V
- #120 - 37 ppm U

no geochemical samples > 2ppb Au.

Topographic Information from Surveys & Mapping - EMR

Claim Location Information from Mineral Titles Maps

Base Geology after Evenchick et al; 1997

**GEOLOGICAL LEGEND**



glacial till; alluvium



Eocene Hyder Pluton intrusive rocks



Jurassic Bowser Lake Group strained metasediments & metavolcanics

on top of  
gr. float - granite boulders  
gr. - granite  
o.b. - overburden



119 Geochemical Sample moss mat or silt

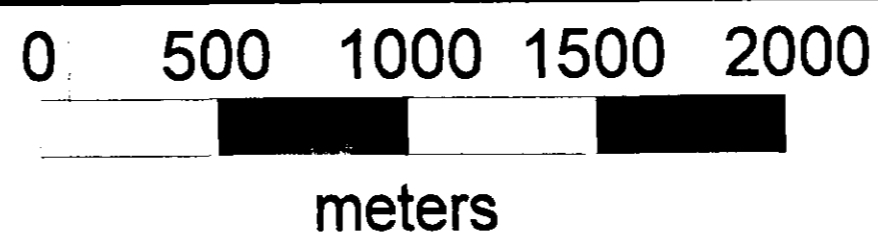


Rock Sample

**OBSERVATORY CLAIM GROUP**

**COMPOSITE MAP**

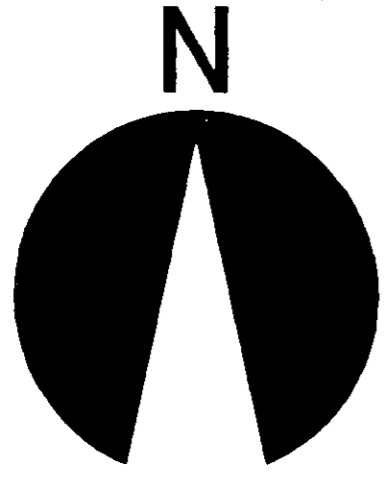
**SKEENA MINING DIVISION  
NTS:**



**FIG. 6-1J**

GEOLOGICAL SURVEY BRANCH  
ASSESSMENT REPORT

25,338



Notes: Anomalous geochemical samples:  
 #35 - 172 ppm V  
 #36 - 94 ppm V  
 #41 - 154 ppm Cr.  
 #42 - 147 ppm Cr.  
 #43 - 150 ppm Cr.  
 no geochemical samples > 2ppb Au

**GEOLOGICAL LEGEND**

- Q glacial fill; alluvium
- ETH Eocene Hyder Pluton intrusive rocks
- Jbt Jurassic Bowser Lake Group sediments
- JHV Lower(?) to Lower Middle Jurassic Hazelton Group metasediments
- DJcg Devonian to Jurassic Clashmore Complex strained granite
- DJsv Devonian to Jurassic Clashmore Complex strained metasediments

outcrop  
 gr. - granite  
 arg - argillite  
 q.v. - quartz veins  
 volc. - fig. siliceous alk grey massive rock.

● 35 Geochemical Sample mass mat or silt

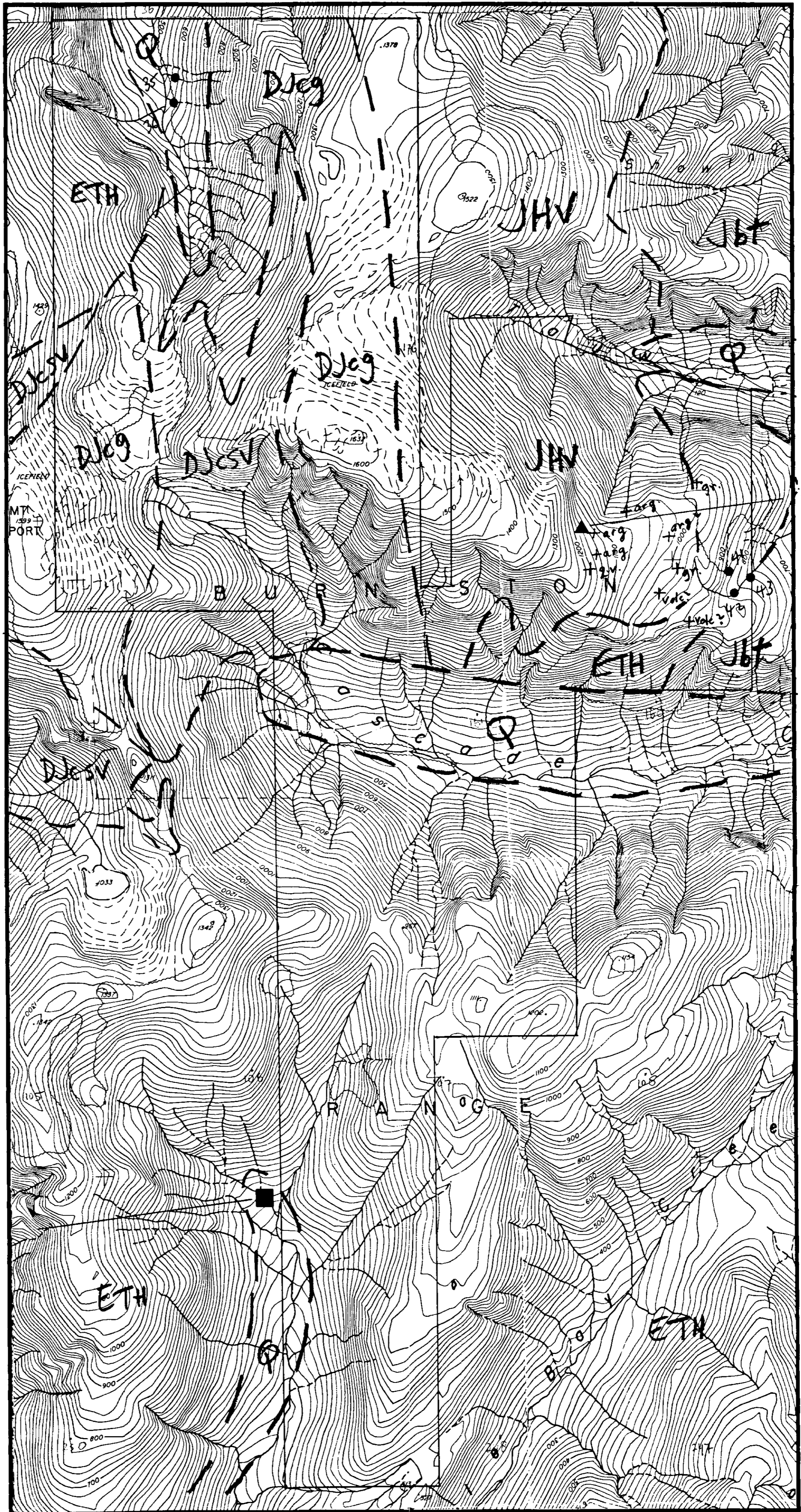
+ Geology Station

▲ Rock Sample

Topographic Information from Surveys & Mapping - EMR

Claim Location Information from Mineral Titles Maps

Base Geology after Evenchick et al; 1997



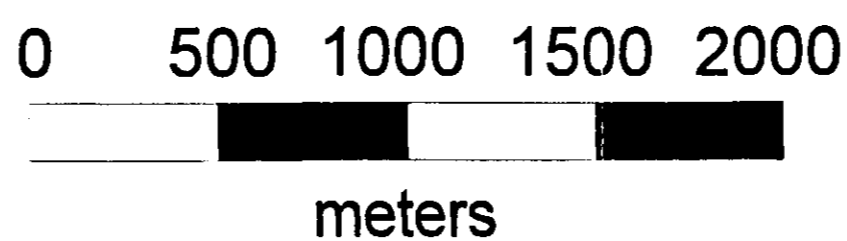
78619  
 20.001  
 outflow  
 Au  
 78620  
 20.001  
 outflow  
 Au  
 78621  
 20.001  
 outflow  
 Au  
 78622  
 20.001  
 outflow  
 Au.

← Anomalous Regional Geochem. Sample 361ppb Au

**CASCADE CLAIM GROUP**

**COMPOSITE MAP**

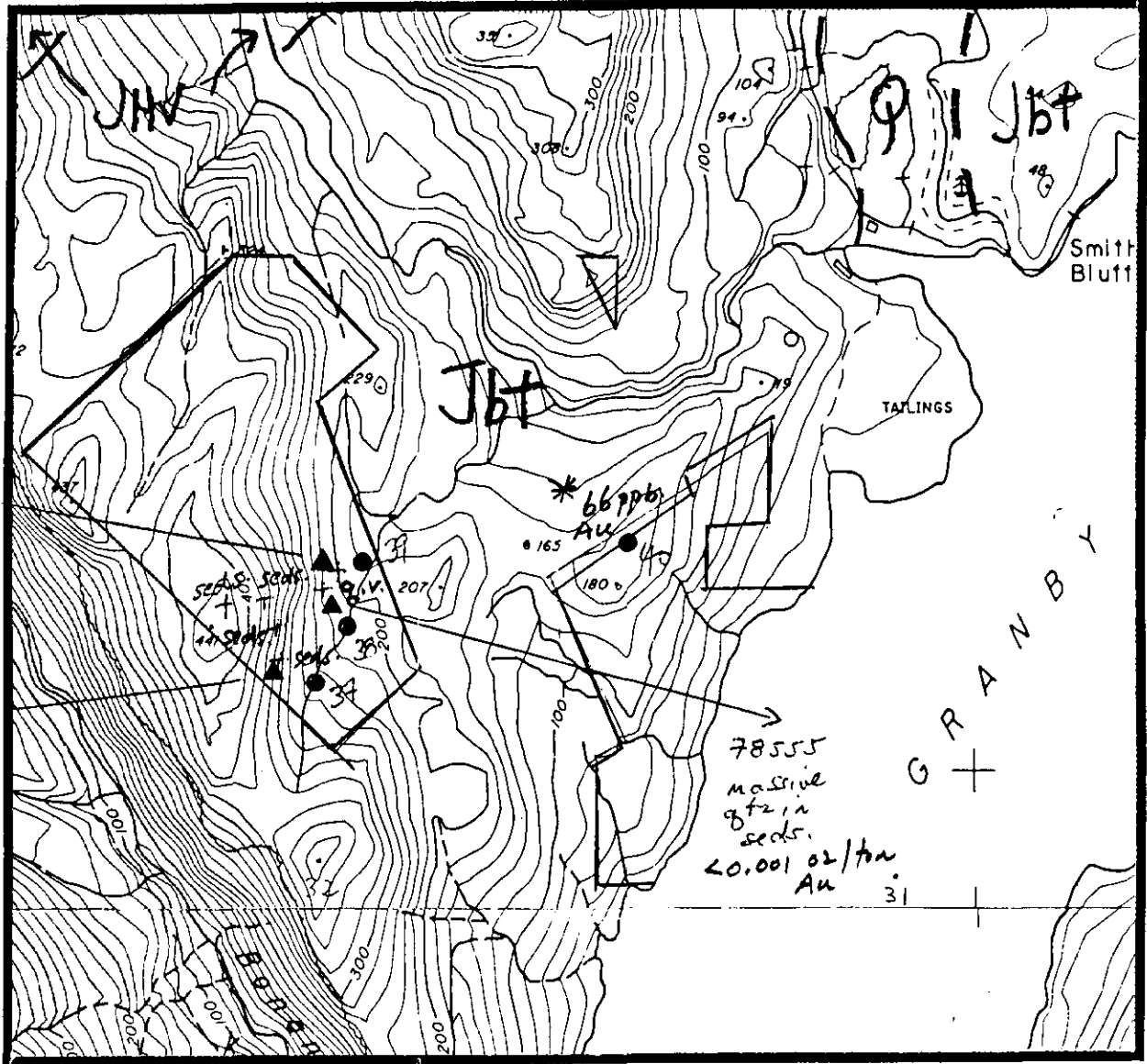
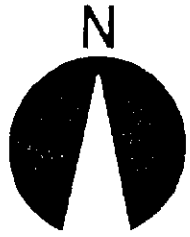
**SKEENA MINING DIVISION  
 NTS: 103P/5W**



**FIG. 6-1K**

GEOLOGICAL SERVICE BRANCH  
 ASSESSMENT REPORT

25,338



Notes: anomalous geochemical samples:

- #37 - 715 ppm Cu, 98 ppm V, 112 ppm As
- #38 - 338 ppm Cu, 0.8 ppm Ag, 96 ppm V
- #39 - 877 ppm Cu, 1.8 ppm Ag, 4.7 ppm Ca, 61 ppm As
- #40 - 289 ppm Cu, 1.1 ppm Ag, 53 ppm As, \*66 ppb Au

all geochemical samples except #40 are <2 ppb Au

Topographic Information from Surveys & Mapping - EMR

Claim Location Information from Mineral Titles Maps

Base Geology after Evenchick et al; 1997

**GEOLOGICAL LEGEND**

- Q glacial till; alluvium
- Jbt Jurassic Bowser Lake Group sediments
- JHv Lower(?) to Lower Middle Jurassic Hazelton Group metasediments

outcrops

seeds - dk. grey. f.g. sediments (siltstone?)  
g.v. - quartz vein

- 38 Geochemical Sample massmat or silt
- + Geology Station
- ▲ Rock Sample

## GRANBY I & GRANBY II CLAIMS

### COMPOSITE MAP

SKEENA MINING DIVISION  
NTS: 103P/5W

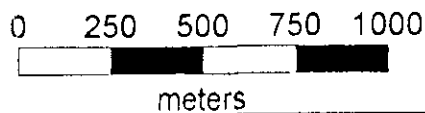
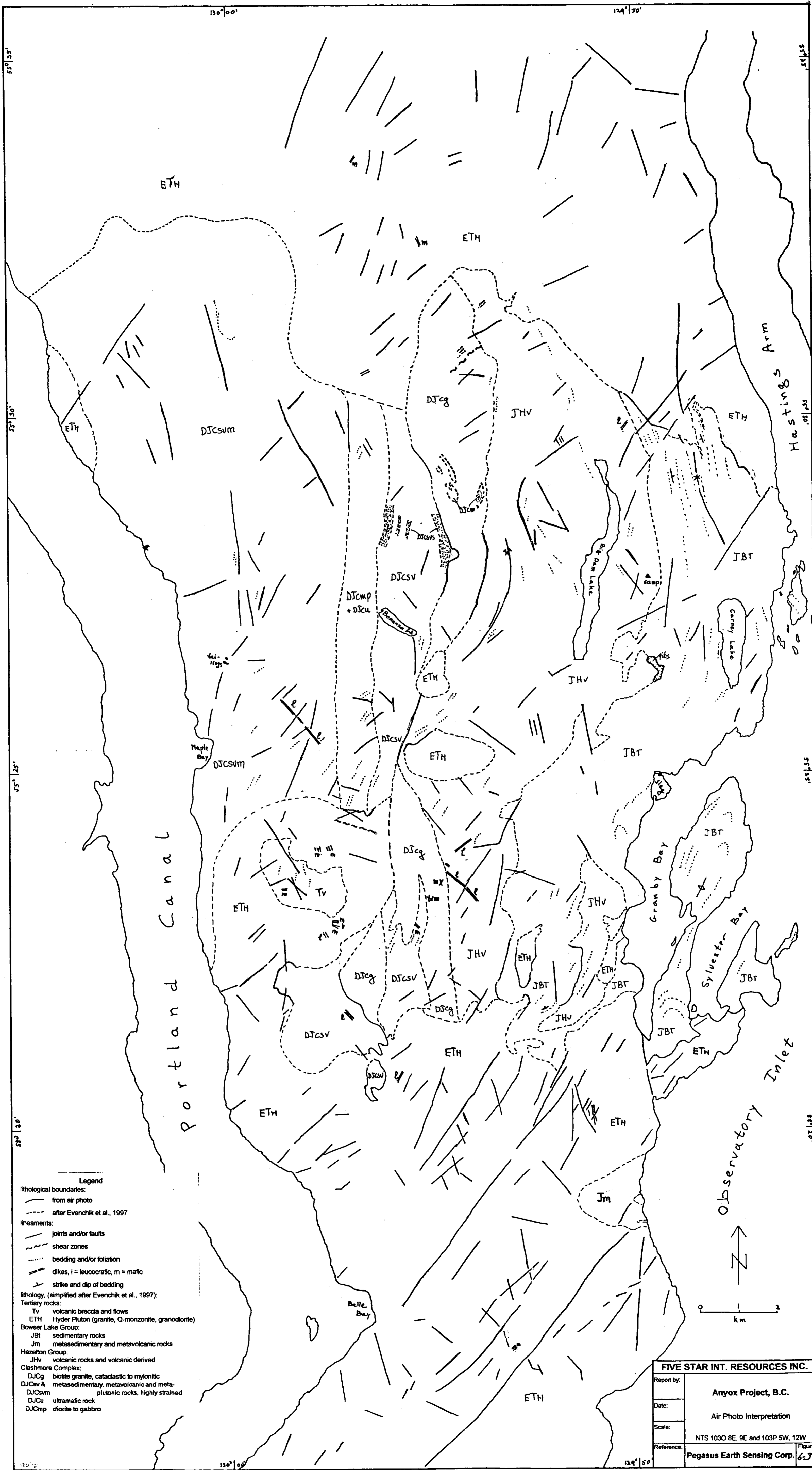


FIG. 6-1L

GEOLOGICAL SURVEY BRANCH  
ASSESSMENT REPORT

25,338



<b>FIVE STAR INT. RESOURCES INC.</b>	
Report by:	<b>Anyox Project, B.C.</b>
Date:	<b>Air Photo Interpretation</b>
Scale:	NTS 1030 8E, 9E and 103P 5W, 12W
Reference:	Pegasus Earth Sensing Corp. Figure 6-7

GEOLOGICAL SURVEY BRITISH COLUMBIA  
AN EXCLUSIVE PROPERTY

25,338