

**1997 GEOCHEMICAL AND DIAMOND DRILLING  
ASSESSMENT REPORT  
ON THE  
NORDIK 1 – 5 CLAIMS**

**RECEIVED**  
JAN 30 1998  
Gold Commissioner's Office  
VANCOUVER, B.C.

**CARIBOO MINING DIVISION  
BRITISH COLUMBIA**

**NTS: 93 A/12**

**LATITUDE: 52° 34' NORTH  
LONGITUDE: 121° 36' WEST**

**OPERATOR: BIG VALLEY RESOURCES INC.  
BOX 4210  
WILLIAMS LAKE, B.C. V2G 2V2**

**REPORT BY: S.J. TENNANT, GEOLOGIST**

**DATE: JANUARY 30, 1998**

**25,382**

**GEOLOGICAL SURVEY BRANCH  
ASSESSMENT REPORT**

## TABLE OF CONTENTS

	Page
SUMMARY.....	1
INTRODUCTION	
i. Location, Access and Physiography.....	2
ii. Claims Ownership.....	2
iii. Property History.....	2
GEOLOGY & MINERALIZATION.....	7
GEOCHEMICAL SURVEY.....	9
DIAMOND DRILLING.....	10
CONCLUSIONS AND RECOMMENDATIONS.....	11
STATEMENT OF COSTS.....	12
AUTHOR'S QUALIFICATIONS.....	13
REFERENCES.....	14

## LIST OF FIGURES, TABLES AND APPENDICES

	Page
<b>FIGURES</b>	
Figure 1	Location..... 4
Figure 2	Claim Map 1:31,680..... 5
Figure 3	Regional Geology 1:50,000..... 3
Figure 4	Drill Location Plan ..... 8
<b>APPENDICES</b>	
Appendix I	Drill Logs
Appendix II	Assay Sheets
Appendix III	Geochemical Grid Maps 1:2,500

## SUMMARY

Big Valley Resources Inc. owns the Nordik 1-5 mineral claims. These claims totalling 94 claim units are located 57 kilometres northeast of Williams Lake in the Cariboo Mining Division. The Nordik claims are generally located on the east side of Polley Lake. The exploration program was carried out on the Nordik 4 claim which straddles the southern end of Polley Lake and adjoins the Imperial Metals property to the west.

Previous work on the Nordik 4 claim consisted of a geochemical soil survey and some short angle drill holes. The best 10 metre section from this drilling assayed 0.33% copper. The higher grade copper values are hosted in an intrusive, probably similar to the intrusive on Imperial Metals ground to the west.

The 1997 exploration program consisted of a geochemical survey consisting of 11.8 kilometres of sample lines and four vertical diamond drill holes. Results of the detailed geochemical soil survey outlined several fairly strong Cu-Zn-Au anomalies. Four diamond drill holes were drilled to test the strongest geochem anomaly, however, mineralization was generally sporadic and low grade.

## INTRODUCTION

### i. Location, Access and Physiography

The Nordik 1 – 5 mineral claims are located 57 kilometres northeast of the city of Williams Lake in central British Columbia (Figure 1). The centre of the claims is at latitude 52° 34' north and longitude 121° 36' west in the Cariboo Mining Division.

The property is readily accessible from Williams Lake via 85 kilometres of paved highway to Morehead Lake, then 9 kilometres on the Morehead Forestry all weather gravel road. A network of old and new logging roads provide good access to most of the claims.

The property lies in the Quesnel Highland physiographic region of the central British Columbia interior. This region is characterized by broad valleys and gently rolling hills with elevations on the property ranging from 914 metres (3,000 feet) to 1,189 metres (3,900 feet) above sea level.

The claims occur in a moist vegetative zone dominated by combinations of coniferous (cedar-pine-spruce-fir) and deciduous (birch-popular) forests with undergrowths of alder and devil's club.

### ii. Claim Status

The property consists of five mineral claims (94 mineral claim units) located in the Cariboo Mining Division. The mineral claims are shown on Figure 2 and details are as follows:

Claim	No. of Units	Record Number	Expiry Date
Nordik 1	20	205623	November 10, 1997
Nordik 2	20	205624	November 10, 1997
Nordik 3	20	205625	November 10, 1997
Nordik 4	16	205626	November 10, 1998
Nordik 5	18	205627	November 10, 1997

The claims are part of a large block of claims in the area REGISTERED to Big Valley Resources Inc.

### iii. Property History

Mining activity in the region has a long history starting with placer operations in 1890, which have continued with varying intensity to the present. From 1960 to 1975, the area was explored for porphyry copper deposits.

In 1964, the Cariboo Bell porphyry gold-copper deposit was discovered during exploration of a prominent aeromagnetic anomaly. Today, the Mount Polley deposit is owned by Imperial Metals Corp. and is scheduled to start production in 1997. It adjoins Big Valley Resources Inc. to the east and south.

In 1975, during the investigation of a similar aeromagnetic anomaly, Dome Mines Ltd. discovered the QR gold deposit. The QR deposit is presently in production and adjoins Big Valley Resources Inc. to the north.

The Nordik 1-5 claims represents part of the mineral tenures that were acquired by Big Valley Resources Inc. for their potential of hosting porphyry copper and/or gold deposits similar to the Mount Polley and QR deposits.

In 1995, a regional geochemical and magnetic survey was carried out on the western half of the Nordik 4 claim. Results of these surveys indicated relatively strong magnetics with some scattered high geochemical values in copper and gold. A number of short angled drill holes were drilled to test the anomalies. Generally copper values were sub-economic from the drilling. The best 10 metre section assayed 3.3% copper.



# LOCATION MAP

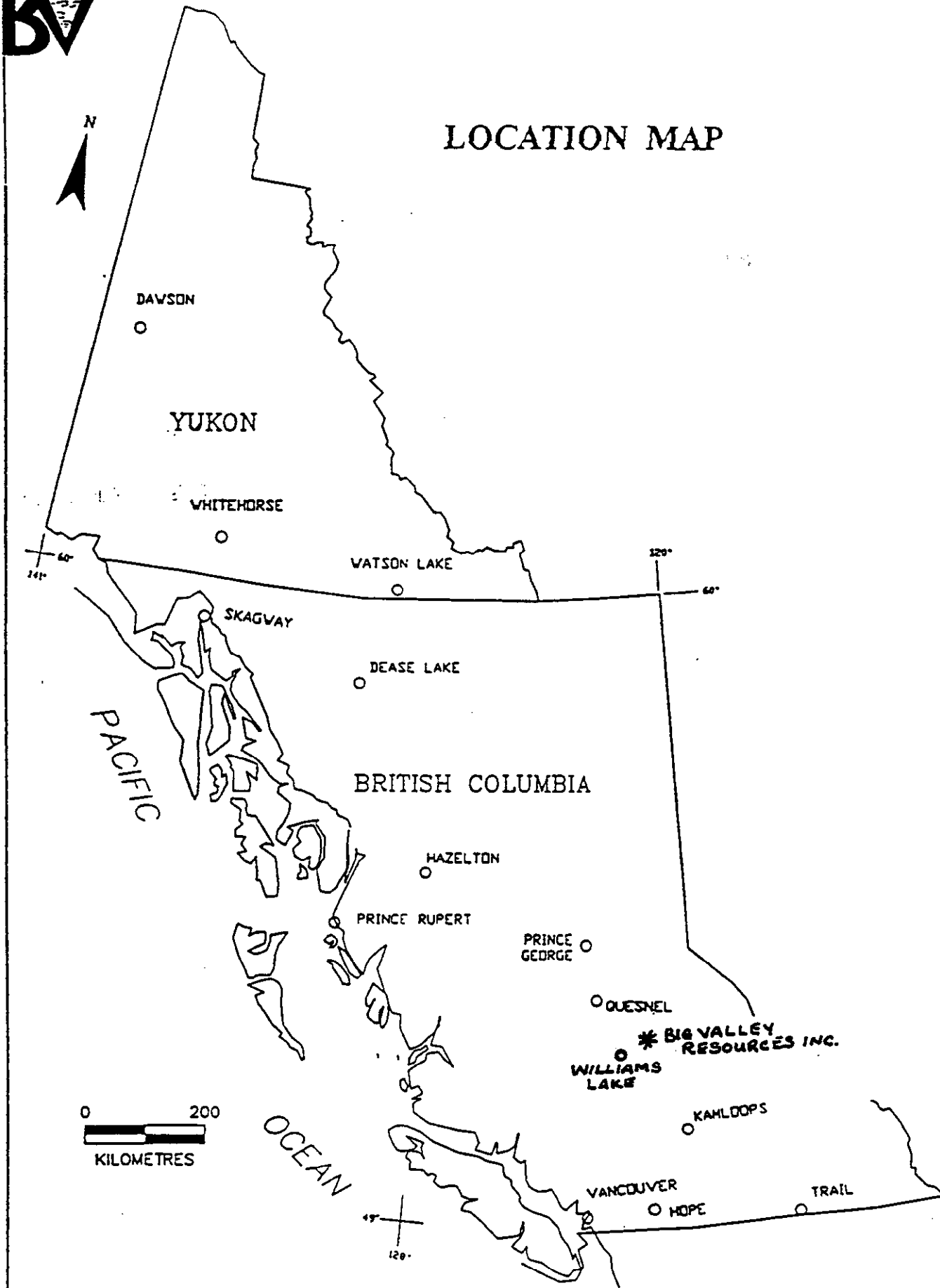
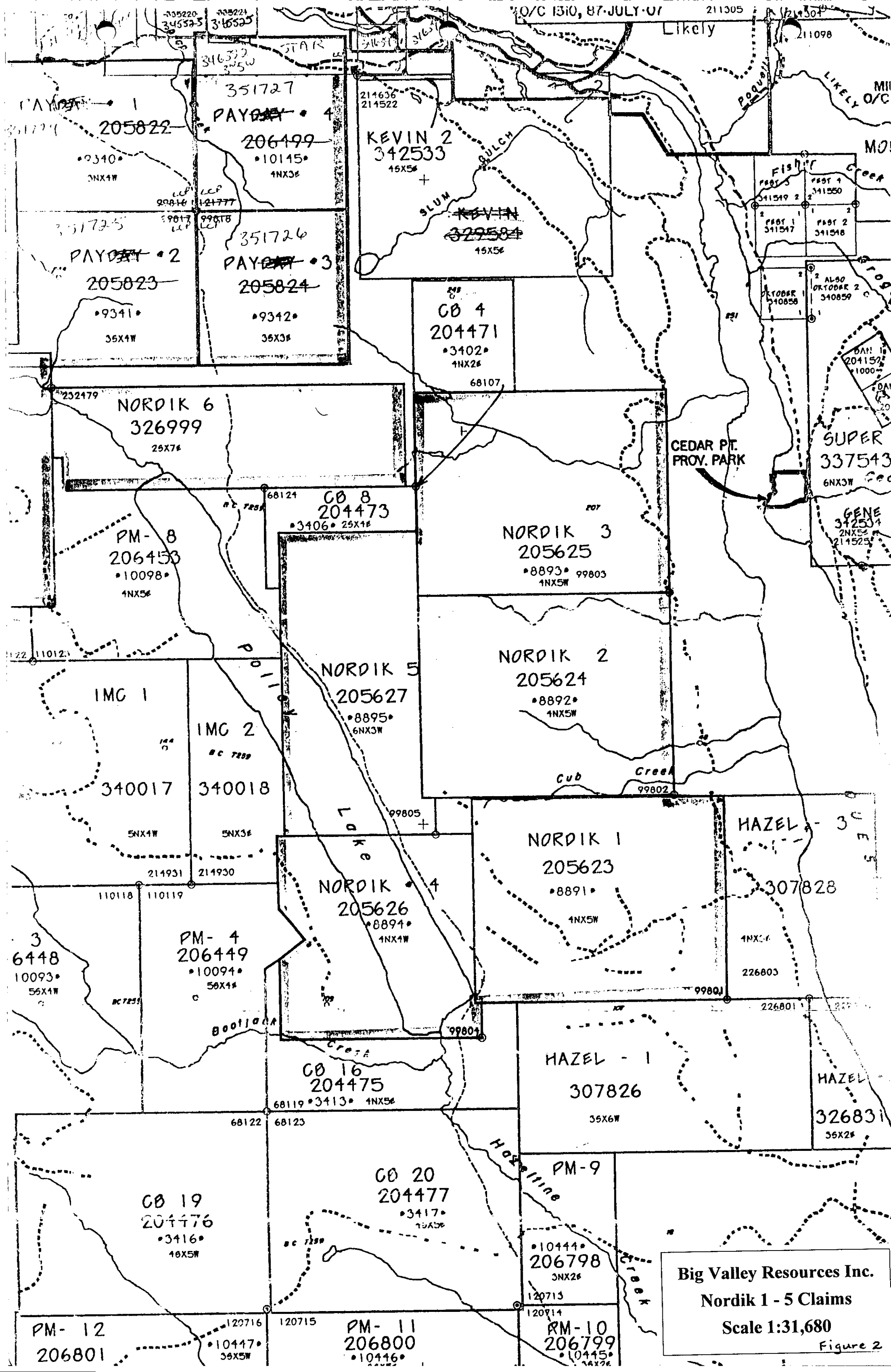
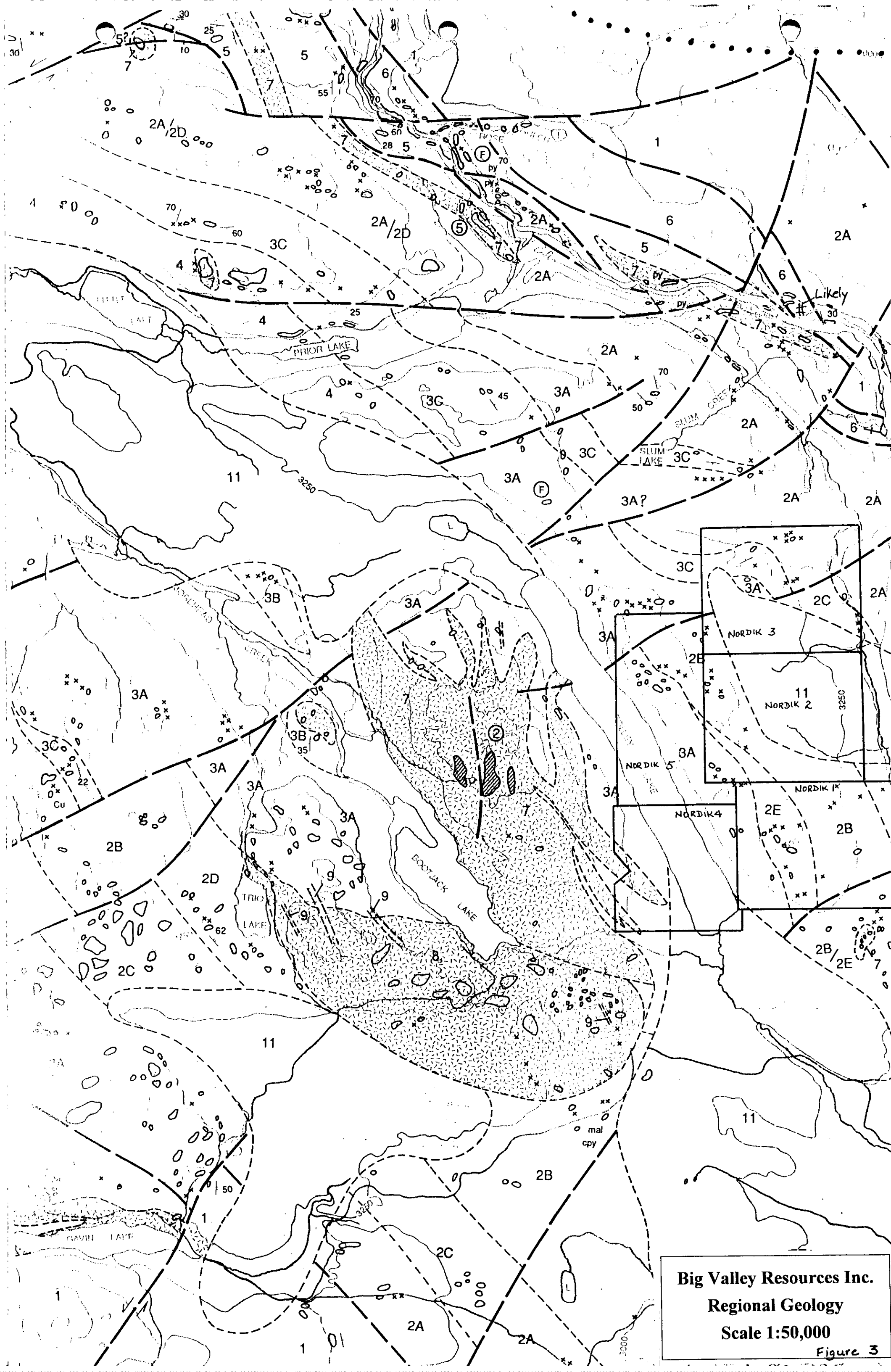


Figure 1



Big Valley Resources Inc.  
 Nordik 1 - 5 Claims  
 Scale 1:31,680  
 Figure 2





**Big Valley Resources Inc.**  
**Regional Geology**  
**Scale 1:50,000**  
 Figure 3

# LEGEND

## SEDIMENTARY AND VOLCANIC ROCKS

## INTRUSIVE ROCKS

TERTIARY	PLEISTOCENE	11	Glacial, fluvioglacial and fluvial gravel and sand
	MIOCENE	10	Green, grey and maroon plateau basalt (alkali olivine basalt)
CRETACEOUS			
JURASSIC	PLIENSBACHIAN	6	Cobble conglomerate: clasts of chert, limestone, sandstone; carbonaceous shale and sandstone
		5	Well bedded dark grey siltstone and sandstone
	SINEMURIAN	4	Maroon, vesicular alkali olivine basalt, commonly analcite-rich
		3C	Feldspathic tuffaceous siltstone and sandstone: minor breccia
		3B	Latitic crystal tuff, tuff breccia and tuffaceous sandstone: minor latite flow breccia
		3A	Maroon and grey polytuff breccia; clasts of mafic and intermediate compositions in chloritic and feldspathic matrix
		2H	Coarse-grained greenish grey and brown sandstone, grey medium-grained sandstone and dark grey siltstone and argillite
		2G	Massive grey limestone and calcareous sandstone
		2F	Interbedded dark grey mafic sandstone and siltstone
		2E	Analcite-bearing maroon and greenish grey alkali basalt; feldspathic in places
NORIAN	2D	Hornblende-bearing pyroxene basalt	
	2C	Polytuffic, grey and maroon mafic breccia; minor feldspathic clasts	
	2B	Maroon, pyroxene-phyric alkali basalt	
	2A	Green and grey pyroxene-phyric alkali olivine basalt and alkali basalt	
	1	Dark grey siltstone, brown and grey sandstone; unit becomes volcanoclastic towards top. Minor conglomerate and dark grey limestone	
TRIASSIC	CARNIAN		



9 Grey hornblende granodiorite and quartz monzonite



8 Fine- to coarse-grained grey nepheline syenite: locally orbicular

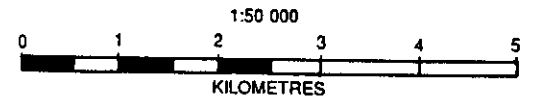


7 Grey and pink, medium fine grained monzonite, monzodiorite, syenodiorite and syenite; pyroxene and/or hornblende-bearing



Province of British Columbia  
Ministry of Energy, Mines and Petroleum Resources  
PRELIMINARY MAP NO. 67

### GEOLOGY OF THE HYDRAULIC MAP AREA NTS 93A/12



Geology by Bailey (1987, 1975); Fox et al. (1986), Bailes (1977)  
Geology compiled by D.G. Bailey, 1987

#### REFERENCES:

- Bailey, D.G. 1976: Geology of the Morehead Lake area, Central British Columbia. Preliminary Map No. 20; B.C. Department Mines and Petroleum Resources.
- Bailes, R.J. (1977): The Cariboo-Bell Aikaline Stock, British Columbia. M.Sc. Thesis (unpubl.) University of Manitoba.
- Fox, P.E., R.S. Cameron and S.J. Hoffman, 1986: Geology and Soil Geochemistry of the Quesnel River Gold Deposit, British Columbia. In 'Geoexpo '86' Proceedings, Association of Exploration Geochemists, Vancouver, May 1986.

## GEOLOGY AND MINERALIZATION

Big Valley Resources property is located in a structural feature known as the Quesnel Trough, a 30 kilometre wide, north west trending, volcanic-sedimentary belt of regional extent of Early Mesozoic age. It is fault bounded on the west by Paleozoic rocks of the Cache Creek Group and on the east by older Paleozoic and Pre-Cambrian strata.

Locally within the Trough intrusive rocks, in part coeval to the volcanics occur on cross cutting structures. The Mount Polley intrusions, representing one such centre, are of interest for their potential of hosting porphyry copper/gold mineralization. The QR gold deposit is associated with a pyrite-epidote zone in basaltic breccia near an alkalic stock.

Regional geological mapping of the Quesnel Trough in the claims area is taken from work recently completed by Dr. D. Bailey for the British Columbia Department of Mines (Figure 3).

In the project area, a belt of mafic and felsic volcanic rocks, comagmatic alkaline stocks and dyke complexes make up the Quesnel Trough. The belt is somewhat symmetrical around a central axis of felsic volcanics that are in turn flanked on the east and west by mafic volcanics and sediments.

The exploration program completed in 1997 on the western half of the Nordik 4 mineral claim indicates the area probably overlies the projected contact between the intrusive and volcanic rock units related to the Mount Polley deposit. The Mount Polley deposit is characterized by multiple intrusions that vary from diorite to crowded plagioclase porphyry to monzonite. Intrusion breccias provide the main host for mineralization and are associated with the highest concentration of copper and gold.

The Nordik drilling generally intersected diorite and monzonite along with some volcanics, however, no breccias were recognized. Gold and copper values were sporadic and low grade.

## GEOCHEMICAL SURVEY

During October, a grid was established on the Nordik 4 mineral claim on the west side of Polley Lake. A total of 11.8 kilometres of grid line was blazed and flagged. Lines 100 metres apart were chained and 25 metre sampling stations numbered. All 11.8 kilometres of sample lines were sampled on 25 metre intervals for a total of 474 soil samples. Material collected was B-horizon at a depth of 20-25 centimetres. Colour varied from orange to orange-brown.

Soil samples were collected and stored in Kraft paper packets and labelled according to the grid co-ordinates. All samples were dried at ambient temperatures, then shipped to Min-En Labs in Vancouver for analysis. A 30 element ICP analysis plus fire assay for gold was obtained for each sample.

Results of the detailed geochemical soil survey show several anomalous areas. The strongest anomaly occurs at lines 16+50N and 17+50N and extends from 100E to 400E, with copper values to 5,016 ppm, zinc to 307 ppm and gold to 261 ppb. In 1995, a number of short angled drill holes tested this area. Results of the drilling was inconclusive as to the potential of the area. A number of smaller copper-zinc anomalies are located on the most northern lines 19+50N to 23+50N. Low grade gold values are associated with these anomalies.

## DIAMOND DRILLING

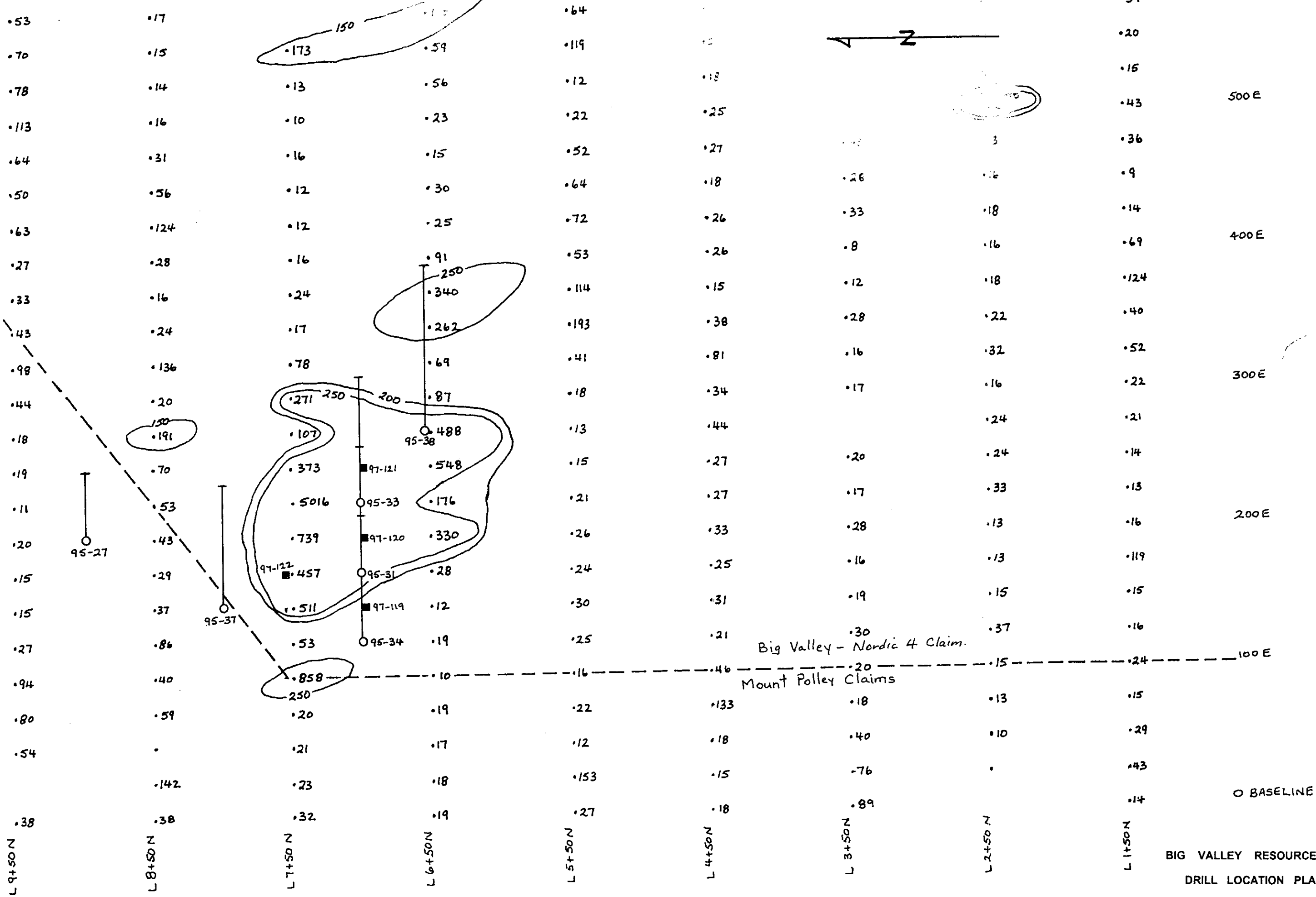
During the late October and early November, Big Valley Resources Inc. completed 4 diamond drill holes on the Nordik 4 mineral claim. The purpose of this drilling was to further test an area that had a strong geochemical anomaly. In 1995, a number of short angle drill holes were drilled and intersected low grade copper mineralization.

The 1997 drill program utilized a unitized Longyear Super 38 drill and recovered NQ size core. The contractor was Beaupre Drilling of Princeton, B.C. Water for drilling was pumped from a stream close to the drill sites. The core was transported to camp on Beaver Valley road for logging, sampling and permanent storage. Intervals to be assayed were split using a manual splitter and shipped to Eco-Tech labs in Kamloops where samples were crushed, pulverized and analysed for Cu and Au along with 30 element ICP. Drill logs and assay sheets are attached as Appendix I and II respectively.

Drill hole information is as follows:

Zone	Hole No.	Dip	Northing	Easting	Length (m)
Nordik 4	97-119	-90°	700N	150E	153.3
Nordik 4	97-120	-90°	700N	200E	154.5
Nordik 4	97-121	-90°	700N	250E	153.3
Nordik 4	97-122	-90°	750N	175E	154.5

Location of drill holes are shown on Figure 4. Results of the diamond drilling indicates the area probably overlies the projected contact between the intrusives and volcanic rock units related to the Mount Polley copper-gold deposit located a couple of kilometres to the northwest. Drilling generally intersected diorite and monzonite along with minor volcanics. No intrusion breccias, which host the Mount Polley mineralization, were recognized.



BIG VALLEY RESOURCES INC.  
 DRILL LOCATION PLAN  
 SCALE 1:2500

Figure 4

## CONCLUSIONS AND RECOMMENDATIONS

The Nordik claim group is located in a geologically favourable area of the Quesnel Trough. The Mount Polley copper-gold porphyry deposit is located on the adjacent ground to the northwest. The exploration target is a porphyry type copper-gold deposit with high magnetite content in alkalic intrusives and/or altered rocks in the vicinity of the intrusions.

Results of the 1997 exploration program indicates an area of interesting geochemical anomalies associated with rock units similar to the Mount Polley copper-gold deposit. Geological mapping along with compilation of all drill data should be carried out in order to further evaluate the area for hosting Mount Polley type mineralization.

## STATEMENT OF COSTS

Locating and surveying grid (11.8 km)	
14 man days @ \$200/day	\$2,800.00
(7 days K. Tattersall – Oct)	
(7 days G. Franks – Oct)	
Soil sampling	
14 man days @ \$200/day	2,800.00
(7 days K. Tattersall – Oct)	
(7 days G. Franks – Oct)	
Assaying 474 soil samples @ \$16.90/sample	8,010.60
Diamond drilling	
(615 metres @ \$61/metre – all inclusive)	37,515.00
Sample prep and assay, 303 core samples @ 20.40/sample	6,181.20
(Prep \$5.00, assay ICP \$6.90, Au \$8.50)	
Freight	250.00
Truck rental (14 days @ \$60/day)	840.00
Geology – logging core and report	
(S. Tennant – 10 days @ \$300/day)	3,000.00
	<hr/>
	<b>\$61,396.80</b>
	<hr/>



## AUTHOR'S QUALIFICATIONS

I, STUART J. TENNANT, do hereby certify that:

1. I am a geologist residing at 600 Garrow Drive, Port Moody, British Columbia, V3H 1H5.
2. I am a 1959 graduate of the University of British Columbia with a Bachelor of Science degree in geology.
3. I have practiced my profession in exploration since 1959, primarily in British Columbia.
4. Since May 1996, I have been employed as an exploration geologist with Big Valley Resources Inc.
5. I personally supervised and participated in the field work and have compiled, reviewed and assessed the data resulting from the work.



---

STUART J. TENNANT

DATED at Vancouver, British Columbia, this 30 day of January, 1998.

## REFERENCES

1. Bailey, David G. (1976): Geology of the Morehead Lake Area, Central British Columbia, BCMEMPR. Notes to Accompany Preliminary Map No 20.
2. Bailey, David G. (1987): Geology of the Central Quesnel Belt, Hydraulic, South-Central British Columbia (93A/12), BCMEMPR, Geological Fieldwork, 1987, Paper 1988-1.
3. Fox, Peter E., Cameron, R.S.: Geology of the QR Gold Deposit, Quesnell River area, British Columbia, CIM Special Volume 46.
4. Panteleyev, Andre, Hancock, Kirk D. (1988), Quesnel Mineral Belt: Summary of the Geology of the Beaver Creek - Horsefly River Map Area, BCMEMPR, Geological Fieldwork, 1988, Paper 1989-1.

**Appendix I**

**Drill Logs**















97-121

HOLE No. 1013  
SHEET No. 1013GRID: NORDIK-4

LOCATION: \_\_\_\_\_ BEARING: \_\_\_\_\_ LATITUDE: 700 N PROPERTY: BIG VALLEY RESOURCES  
 DATE COLLARED: \_\_\_\_\_ LENGTH: 153.3 DEPARTURE: 250 E CORE SIZE: NO LOGGED BY: S. Tennant  
 DATE COMPLETED: \_\_\_\_\_ DIP: -90° ELEVATION: \_\_\_\_\_ SCALE OF LOG: \_\_\_\_\_ DATE: 10 Dec. 1977

ROCK TYPES AND TEXTURES	ALTERATION	GRAPHIC LOG				MINERALIZATION	REMARKS	FOOTAGE BLOCKS	EST. CORE REC.	COMPOSITES	ASSAY RESULTS			
		Feet Alteration	Feet Sulfide	JOINT OR CONTACT ANGLES	% PYRITE						SAMPLE No.			
0 - 4m Casing	(Overburden)													
4-14.2 MONZONITE Finely porphyritic	Red-Brown groundmass lim. on fr. to 7m.					Minor diss PY.	Slightly mag.							
Some bleaching from 13m.	Diss. epi. - minor calcite veining													
14.2-15.8 Spotted Mafic Dyke														
Upper contact of dyke is a fault (gouge)														
15.8-21.6 DIORITE	Dark grey groundmass						Fairly mag.							
Generally very broken due to small shears and fracturing	Fractures have epi and some calcite.					Minor diss. PY								
21.6-22.4 Spotted Mafic Dyke														
22-22.4 Fault gouge														
18-24m. highly broken core due to shearing														
22.4-36.5 DIORITE Dark grey groundmass	Core broken up due to high angle fractures					Diss. and Patchy py increasing	Fairly mag.							











**Appendix II**  
**Assay Sheets**





**MINERAL  
ENVIRONMENTS  
LABORATORIES LTD.**

SPECIALISTS IN MINERAL ENVIRONMENTS  
CHEMISTS • ASSAYERS • ANALYSTS • GEOCHEMISTS

VANCOUVER OFFICE:  
8282 SHERBROOKE STREET  
VANCOUVER, B.C., CANADA V5X 4E6  
TELEPHONE (604) 327-3436  
FAX (604) 327-3423

SMITHERS LAB:  
3176 TATLOW ROAD  
SMITHERS, B.C., CANADA V0J 2N0  
TELEPHONE (604) 847-3004  
FAX (604) 847-3005

*Quality Assaying for over 25 Years*

**Geochemical Analysis Certificate**

7V-0783-SG1

Company: **BIG VALLEY RESOURCES INC.**  
Project: **S.E. NORDIK CLAIMS**  
Attr: **LLOYD TATTERSALL**

Date: NOV-07-97

We hereby certify the following Geochemical Analysis of 24 SOIL samples submitted OCT-28-97 by EFF COCKS.

Sample Number	Au-fire PPB
L1+50N 0+00E	24
L1+50N 0+25E	1
L1+50N 0+50E	2
L1+50N 0+75E	1
L1+50N 1+00E	1
L1+50N 1+25E	1
L1+50N 1+50E	1
L1+50N 1+75E	2
L1+50N 2+00E	1
L1+50N 2+25E	3
L1+50N 2+50E	1
L1+50N 2+75E	2
L1+50N 3+00E	1
L1+50N 3+25E	1
L1+50N 3+50E	1
L1+50N 3+75E	8
L1+50N 4+00E	1
L1+50N 4+25E	49
L1+50N 4+50E	17
L1+50N 4+75E	5
L1+50N 5+00E	6
L1+50N 5+25E	5
L1+50N 5+50E	3
L1+50N 5+75E	3

Certified by \_\_\_\_\_

MIN-EN LABORATORIES



**MINERAL ENVIRONMENTS LABORATORIES LTD.**

SPECIALISTS IN MINERAL ENVIRONMENTS  
CHEMISTS • ASSAYERS • ANALYSTS • GEOCHEMISTS

**VANCOUVER OFFICE:**  
8292 SHERBROOKE STREET  
VANCOUVER, B.C., CANADA V5X 4E8  
TELEPHONE (604) 327-3436  
FAX (604) 327-3423

**SMITHERS LAB:**  
3176 TATLOW ROAD  
SMITHERS, B.C., CANADA V0J 2N0  
TELEPHONE (604) 847-3004  
FAX (604) 847-3005

*Quality Assaying for over 25 Years*

**Geochemical Analysis Certificate**

**7V-0783-SG2**

Company: **BIG VALLEY RESOURCES INC.**  
Project: **S.E.NORDIK CLAIMS**  
Attn: **LLOYD TATTERSALL**

Date: **NOV-07-97**

*We hereby certify* the following Geochemical Analysis of 23 SOIL samples submitted OCT-28-97 by EFF COCKS.

Sample Number	Au-fire PPH
L1+50N 6+00E	1
L1+50N 6+25E	1
L1+50N 6+50E	5
L1+50N 6+75E	6
L1+50N 7+00E	4
L1+50N 7+25E	12
L1+50N 7+50E	1
L1+50N 7+75E	6
L1+50N 8+00E	3
L1+50N 8+50E	4
L1+50N 8+75E	5
L1+50N 9+00E	3
L1+50N 9+25E	
L1+50N 9+50E	3
L1+50N 9+75E	6
L1+50N 10+00E	4
L2+50N 0+50E	1
L2+50N 0+75E	3
L2+50N 1+00E	3
L2+50N 1+25E	4
L2+50N 1+50E	3
L2+50N 1+75E	5
L2+50N 2+00E	6
L2+50N 2+25E	8

Certified by 

MIN-EN LABORATORIES



**MINERAL  
ENVIRONMENTS  
LABORATORIES LTD.**

SPECIALISTS IN MINERAL ENVIRONMENTS  
CHEMISTS • ASSAYERS • ANALYSTS • GEOCHEMISTS

**VANCOUVER OFFICE:**  
8282 SHERBROOKE STREET  
VANCOUVER, B.C., CANADA V5X 4L8  
TELEPHONE (604) 327-3436  
FAX (604) 327-3423

**SMITHERS LAB:**  
3176 TATLOW ROAD  
SMITHERS, B.C., CANADA V0J 2N0  
TELEPHONE (604) 847-3004  
FAX (604) 847-3005

*Quality Assaying for over 25 Years*

**Geochemical Analysis Certificate**

**7V-0783-SG3**

Company: **BIG VALLEY RESOURCES INC.**  
Project: **S.E. NORDIK CLAIMS**  
Attn: **LLOYD TATTERSALL**

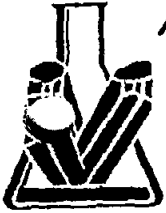
Date: **NOV-07-97**

We hereby certify the following Geochemical Analysis of 24 SOIL samples submitted OCT-28-97 by EFF COCKS.

Sample Number	Au-fire PPB
L2+50N 2+50E	2
L2+50N 2+75E	4
L2+50N 3+00E	8
L2+50N 3+25E	7
L2+50N 3+50E	2
L2+50N 3+75E	5
L2+50N 4+00E	2
L2+50N 4+25E	4
L2+50N 4+50E	1
L2+50N 4+75E	2
L2+50N 5+00E	56
L2+50N 5+25E	19
L2+50N 5+50E	4
L2+50N 5+75E	5
L2+50N 6+00E	10
L2+50N 6+25E	1
L2+50N 6+50E	1
L2+50N 6+75E	6
L2+50N 7+00E	5
L2+50N 7+25E	6
L2+50N 7+50E	4
L2+50N 7+75E	5
L2+50N 8+00E	15
L2+50N 8+25E	3

Certified by \_\_\_\_\_

MIN-EN LABORATORIES



**MINERAL  
ENVIRONMENTS  
LABORATORIES LTD.**

SPECIALISTS IN MINERAL ENVIRONMENTS  
CHEMISTS • ASSAYERS • ANALYSTS • GEOCHEMISTS

**VANCOUVER OFFICE:**  
8282 SHERBROOKE STREET  
VANCOUVER, B.C., CANADA V5X 4E8  
TELEPHONE (604) 327-3436  
FAX (604) 327-3423

**SMITHERS LAB:**  
3176 TATLOW ROAD  
SMITHERS, B.C., CANADA V0J 2N0  
TELEPHONE (604) 847-3004  
FAX (604) 847-3005

*Quality Assaying for over 25 Years*

**Geochemical Analysis Certificate**

TV-0783-SG4

Company: **BIG VALLEY RESOURCES INC.**  
Project: **S.E. NORDIK CLAIMS**  
Attn: **LLOYD TATTERSALL**

Date: NOV-07-97

We hereby certify the following Geochemical Analysis of 24 SOIL samples submitted OCT-28-97 by EFF COCKS.

Sample Number	Au-fire PPB
L2+50N 8+50E	4
L2+50N 9+25E	2
L2+50N 9+50E	5
L2+50N 9+75E	6
L3+50N 0+00E	3
L3+50N 0+25E	8
L3+50N 0+50E	2
L3+50N 0+75E	10
L3+50N 1+00E	7
L3+50N 1+25E	4
L3+50N 1+50E	8
L3+50N 1+75E	1
L3+50N 2+00E	3
L3+50N 2+25E	7
L3+50N 2+50E	6
L3+50N 3+00E	4
L3+50N 3+25E	6
L3+50N 3+50E	3
L3+50N 3+75E	1
L3+50N 4+00E	4
L3+50N 4+25E	1
L3+50N 4+50E	5
L3+50N 4+75E	5
L3+50N 5+00E	4

Certified by \_\_\_\_\_

MIN-EN LABORATORIES



# MINERAL ENVIRONMENTS LABORATORIES LTD.

SPECIALISTS IN MINERAL ENVIRONMENTS  
CHEMISTS • ASSAYERS • ANALYSTS • GEOCHEMISTS

**VANCOUVER OFFICE:**  
8282 SHERBROOKE STREET  
VANCOUVER, B.C., CANADA V5X 4E6  
TELEPHONE (604) 327-3436  
FAX (604) 327 3423

**SMITHERS LAB:**  
3176 TATLOW ROAD  
SMITHERS, B.C., CANADA V0J 2N0  
TELEPHONE (604) 847-3004  
FAX (604) 847 3005

*Quality Assaying for over 25 Years*

## Geochemical Analysis Certificate

7V-0783-SG5

Company: **BIG VALLEY RESOURCES INC.**  
Project: **S.E. NORDIK CLAIMS**  
Attn: **LLOYD TATTERSALL**

Date: NOV-07-97

We hereby certify the following Geochemical Analysis of 24 SOIL samples submitted OCT-28-97 by EFF COCKS.

Sample Number	Au-fire PPB
L3+50N 5+25E	3
L3+50N 5+50E	1
L3+50N 5+75E	11
L3+50N 6+00E	6
L3+50N 6+25E	6
L3+50N 6+50E	5
L3+50N 6+75E	3
L3+50N 7+00E	2
L3+50N 7+25E	9
L3+50N 7+50E	1
L3+50N 7+75E	5
L3+50N 8+00E	5
L3+50N 8+25E	5
L3+50N 8+50E	4
L3+50N 8+75E	1
L3+50N 9+00E	6
L3+50N 9+25E	3
L4+50N 0+00E	1
L4+50N 0+25E	5
L4+50N 0+50E	1
L4+50N 0+75E	7
L4+50N 1+00E	4
L4+50N 1+25E	2
L4+50N 1+50E	4

Certified by \_\_\_\_\_

MIN-EN LABORATORIES



**MINERAL  
ENVIRONMENTS  
LABORATORIES LTD.**

SPECIALISTS IN MINERAL ENVIRONMENTS  
CHEMISTS • ASSAYERS • ANALYSTS • GEOCHEMISTS

**VANCOUVER OFFICE:**  
8282 SHERBROOKE STREET  
VANCOUVER, B.C. CANADA V5X 4E8  
TELEPHONE (604) 327-3436  
FAX (604) 327-3423

**SMITHERS LAB:**  
3176 TATLOW ROAD  
SMITHERS, B.C., CANADA V0J 2N0  
TELEPHONE (604) 847-3004  
FAX (604) 847-3005

*Quality Assaying for over 25 Years*

**Geochemical Analysis Certificate**

**TV-0783-SG6**

Company: **BIG VALLEY RESOURCES INC.**  
Project: **S.E. NORDIK CLAIMS**  
Attn: **LLOYD TATTERSALL**

Date: **NOV-07-97**

We hereby certify the following Geochemical Analysis of 24 SOIL samples submitted OCT-28-97 by EFF COCKS.

Sample Number	Au-fire PPH
L4+50N 1+75E	2
L4+50N 2+00E	5
L4+50N 2+25E	3
L4+50N 2+50E	4
L4+50N 2+75E	7
L4+50N 3+00E	2
L4+50N 3+25E	2
L4+50N 3+50E	4
L4+50N 3+75E	1
L4+50N 4+00E	2
L4+50N 4+25E	4
L4+50N 4+50E	3
L4+50N 4+75E	3
L4+50N 5+00E	5
L4+50N 5+25E	8
L4+50N 5+50E	5
L4+50N 5+75E	1
L4+50N 6+00E	4
L4+50N 6+25E	1.8
L4+50N 6+50E	1
L4+50N 6+75E	8
L4+50N 7+00E	2
L4+50N 7+25E	2
L4+50N 7+50E	2

Certified by 

MIN-EN LABORATORIES



**MINERAL  
ENVIRONMENTS  
LABORATORIES LTD.**

SPECIALISTS IN MINERAL ENVIRONMENTS  
CHEMISTS • ASSAYERS • ANALYSTS • GEOCHEMISTS

**VANCOUVER OFFICE:**  
8282 SHERBROOKE STREET  
VANCOUVER, B.C., CANADA V5X 4E8  
TELEPHONE (604) 327-3436  
FAX (604) 327-3473

**SMITHERS LAB:**  
5176 TATLOW ROAD  
SMITHERS, B.C., CANADA V0J 2N0  
TELEPHONE (604) 847-3004  
FAX (604) 847-3005

*Quality Assaying for over 25 Years*

**Geochemical Analysis Certificate**

**7V-0783-SG7**

Company: **BIG VALLEY RESOURCES INC.**  
Project: **S.E. NORDIK CLAIMS**  
Attn: **LLOYD TATTERSALL**

Date: **NOV-07-97**

*We hereby certify* the following Geochemical Analysis of 24 SOIL samples submitted OCT-28-97 by EFF COCKS.

Sample Number	Au-fire PPB
L4+50N 7+75E	3
L4+50N 8+00E	7
L4+50N 8+25E	4
L4+50N 8+50E	8
L4+50N 8+75E	5
L4+50N 9+00E	6
L4+50N 9+25E	7
L4+50N 9+50E	2
L5+50N 0+00E	9
L5+50N 0+25E	35
L5+50N 0+50E	218
L5+50N 0+75E	5
L5+50N 1+00E	4
L5+50N 1+25E	4
L5+50N 1+50E	5
L5+50N 1+75E	3
L5+50N 2+00E	3
L5+50N 2+25E	6
L5+50N 2+50E	14
L5+50N 2+75E	5
L5+50N 3+00E	10
L5+50N 3+25E	3
L5+50N 3+50E	12
L5+50N 3+75E	10

Certified by \_\_\_\_\_

**MIN-EN LABORATORIES**



**MINERAL  
ENVIRONMENTS  
LABORATORIES LTD.**

SPECIALISTS IN MINERAL ENVIRONMENTS  
CHEMISTS • ASSAYERS • ANALYSTS • GEOCHEMISTS

**VANCOUVER OFFICE:**  
8282 SHERBROOKE STREET  
VANCOUVER, B.C., CANADA V5X 4E6  
TELEPHONE (604) 327-3436  
FAX (604) 327-3473

**SMITHERS LAB:**  
3176 TATLOW ROAD  
SMITHERS, B.C., CANADA V0J 2N0  
TELEPHONE (604) 847-3004  
FAX (604) 847-3005

*Quality Assaying for over 25 Years*

**Geochemical Analysis Certificate**

**7V-0783-SG8**

Company: **BIG VALLEY RESOURCES INC.**  
Project: **S.E. NORDIK CLAIMS**  
Attn: **LLOYD TATTERSALL**

Date: **NOV-07-97**

We hereby certify the following Geochemical Analysis of 24 SOIL samples submitted OCT-28-97 by EFF COCKS.

Sample Number	Au-fire PPB
LS+50N 4+00E	5
LS+50N 4+25E	3
LS+50N 4+50E	1
LS+50N 4+75E	3
LS+50N 5+00E	1
LS+50N 5+25E	2
LS+50N 5+50E	4
LS+50N 5+75E	6
LS+50N 6+00E	10
LS+50N 6+25E	5
LS+50N 6+50E	11
LS+50N 6+75E	2
LS+50N 7+00E	4
LS+50N 7+25E	10
LS+50N 7+50E	5
LS+50N 7+75E	3
LS+50N 8+00E	6
LS+50N 8+25E	7
LS+50N 8+50E	5
LS+50N 8+75E	8
LS+50N 9+00E	5
LS+50N 9+25E	6
LS+50N 9+50E	5
LS+50N 9+75E	8

Certified by \_\_\_\_\_

**MIN-EN LABORATORIES**





**MINERAL  
ENVIRONMENTS  
LABORATORIES LTD.**

SPECIALISTS IN MINERAL ENVIRONMENTS  
CHEMISTS • ASSAYERS • ANALYSTS • GEOCHEMISTS

**VANCOUVER OFFICE:**  
8282 SHERBROOKE STREET  
VANCOUVER, B.C. CANADA V5X 4E9  
TELEPHONE (604) 327-3436  
FAX (604) 327-3423

**SMITHERS LAB:**  
3176 TATLOW ROAD  
SMITHERS, B.C. CANADA V0J 2N0  
TELEPHONE (604) 847-3004  
FAX (604) 347-3005

*Quality Assaying for over 25 Years*

**Geochemical Analysis Certificate**

7V-0783-SG9

Company: **BIG VALLEY RESOURCES INC.**  
Project: **S.E. NORDIK CLAIMS**  
Attn: **LLOYD TATTERSALL**

Date: NOV-07-97

We hereby certify the following Geochemical Analysis of 24 SOIL samples submitted OCT-28-97 by EFF COCKS.

Sample Number	Au-fire PPB
L6+50N 10+00E	2
L6+50N 0+00E	1
L6+50N 0+25E	2
L6+50N 0+50E	6
L6+50N 0+75E	5
L6+50N 1+00E	8
L6+50N 1+25E	2
L6+50N 1+50E	4
L6+50N 1+75E	7
L6+50N 2+00E	32
L6+50N 2+25E	25
L6+50N 2+50E	14
L6+50N 2+75E	48
L6+50N 3+00E	16
L6+50N 3+25E	9
L6+50N 3+50E	33
L6+50N 3+75E	18
L6+50N 4+00E	13
L6+50N 4+25E	8
L6+50N 4+50E	3
L6+50N 4+75E	3
L6+50N 5+00E	6
L6+50N 5+25E	7
L6+50N 5+50E	21

Certified by \_\_\_\_\_

MIN-EN LABORATORIES



**MINERAL  
ENVIRONMENTS  
LABORATORIES LTD.**

SPECIALISTS IN MINERAL ENVIRONMENTS  
CHEMISTS • ASSAYERS • ANALYSTS • GEOCHEMISTS

**VANCOUVER OFFICE:**  
8282 SHERBROOKE STREET  
VANCOUVER, B.C., CANADA V5X 4E8  
TELEPHONE (604) 327-3436  
FAX (604) 327-3423

**SMITHERS LAB:**  
3176 TATLOW ROAD  
SMITHERS, B.C., CANADA V0J 2N0  
TELEPHONE (604) 847 3004  
FAX (604) 847 3005

*Quality Assaying for over 25 Years*

**Geochemical Analysis Certificate**

7V-0783-SG10

Company: **BIG VALLEY RESOURCES INC.**  
Project: **S.E. NORDIK CLAIMS**  
Attn: **LLOYD TATTERSALL**

Date: NOV-07-97

We hereby certify the following Geochemical Analysis of 24 SOIL samples submitted OCT-28-97 by EFF COCKS.

Sample Number	Au-fire	PPB
L6+50N 5+75E		6
L6+50N 6+00E		1
L6+50N 6+25E		7
L6+50N 7+50E		3
L6+50N 7+75E		2
L6+50N 8+00E		1
L6+50N 8+25E		3
L6+50N 8+50E		4
L6+50N 9+00E		2
L6+50N 9+25E		5
L6+50N 9+50E		1
L6+50N 9+75E		8
L6+50N 10+00E		4
L7+50N 0+00E		14
L7+50N 0+25E		75
L7+50N 0+50E		1
L7+50N 0+75E		7
L7+50N 1+00E		261
L7+50N 1+25E		8
L7+50N 1+50E		32
L7+50N 1+75E		45
L7+50N 2+00E		116
L7+50N 2+25E		91
L7+50N 2+50E		25

Certified by \_\_\_\_\_

MIN-EN LABORATORIES



**MINERAL  
ENVIRONMENTS  
LABORATORIES LTD.**

SPECIALISTS IN MINERAL ENVIRONMENTS  
CHEMISTS • ASSAYERS • ANALYSTS • GEOCHEMISTS

**VANCOUVER OFFICE:**  
8282 SHERBROOKE STREET  
VANCOUVER, B.C., CANADA V5X 4E8  
TELEPHONE (604) 327-3436  
FAX (604) 327-3423

**SMITHERS LAB:**  
3176 TATLOW ROAD  
SMITHERS, B.C., CANADA V0J 2N0  
TELEPHONE (604) 847-3004  
FAX (604) 847-3005

*Quality Assaying for over 25 Years*

**Geochemical Analysis Certificate**

7V-0783-SG11

Company: **BIG VALLEY RESOURCES INC.**  
Project: **S.E. NORDIK CLAIMS**  
Attn: **LLOYD TATTERSALL**

Date: NOV-07-97

We hereby certify the following Geochemical Analysis of 24 SOIL samples submitted OCT-28-97 by EFF COCKS.

Sample Number	Au-fire PPB
L7+50N 2+75E	2
L7+50N 3+00E	6
L7+50N 3+25E	18
L7+50N 3+50E	2
L7+50N 3+75E	4
L7+50N 4+00E	9
L7+50N 4+25E	20
L7+50N 4+50E	5
L7+50N 4+75E	3
L7+50N 5+00E	4
L7+50N 5+25E	3
L7+50N 5+50E	10
L7+50N 6+00E	5
L7+50N 6+25E	9
L7+50N 6+50E	8
L7+50N 6+75E	6
L7+50N 7+00E	4
L7+50N 7+25E	7
L7+50N 7+50E	3
L7+50N 7+75E	2
L7+50N 8+00E	3
L7+50N 8+25E	4
L7+50N 8+50E	7
L7+50N 8+75E	4

Certified by 

MIN-EN LABORATORIES



# MINERAL ENVIRONMENTS LABORATORIES LTD.

SPECIALISTS IN MINERAL ENVIRONMENTS  
CHEMISTS • ASSAYERS • ANALYSTS • GEOCHEMISTS

VANCOUVER OFFICE:  
8282 SHERBROOKE STREET  
VANCOUVER, B.C., CANADA V5X 4E8  
TELEPHONE (604) 327-3436  
FAX (604) 327-3423

SMITHERS LAB:  
3176 TATLOW ROAD  
SMITHERS, B.C., CANADA V0J 2N0  
TELEPHONE (604) 847-3004  
FAX (604) 847-3005

*Quality Assaying for over 25 Years*

## Geochemical Analysis Certificate

TV-0783-SG12

Company: **BIG VALLEY RESOURCES INC.**  
Project: **S.E. NORDIK CLAIMS**  
Attn: **LLOYD TATTERSALL**

Date: NOV-07-97

We hereby certify the following Geochemical Analysis of 24 SOIL samples submitted OCT-28-97 by EFF COCKS.

Sample Number	Au-fire PPB
L7+50N 9+00E	5
L7+50N 9+25E	16
L7+50N 9+50E	3
L7+50N 9+75E	21
L7+50N 10+00E	11
L8+50N 0+00E	10
L8+50N 0+25E	10
L8+50N 0+75E	48
L8+50N 1+00E	12
L8+50N 1+25E	16
L8+50N 1+50E	9
L8+50N 1+75E	7
L8+50N 2+00E	5
L8+50N 2+25E	10
L8+50N 2+50E	6
L8+50N 2+75E	20
L8+50N 3+00E	1
L8+50N 3+25E	22
L8+50N 3+50E	3
L8+50N 3+75E	8
L8+50N 4+00E	6
L8+50N 4+25E	7
L8+50N 4+50E	9
L8+50N 4+75E	5

Certified by

MIN-EN LABORATORIES



**MINERAL  
ENVIRONMENTS  
LABORATORIES LTD.**

SPECIALISTS IN MINERAL ENVIRONMENTS  
CHEMISTS • ASSAYERS • ANALYSTS • GEOCHEMISTS

**VANCOUVER OFFICE:**  
6282 SHERBROOKE STREET  
VANCOUVER, B.C., CANADA V5X 4E8  
TELEPHONE (604) 327-3436  
FAX (604) 327-3423

**SMITHERS LAB:**  
3176 TATLOW ROAD  
SMITHERS, B.C., CANADA V0J 2N0  
TELEPHONE (604) 847-3004  
FAX (604) 847-3005

*Quality Assurance for over 25 Years*

**Geochemical Analysis Certificate**

7V-0783-SG13

Company: **BIG VALLEY RESOURCES INC.**  
Project: **S.E. NORDIK CLAIMS**  
Attn: **LLOYD TATTERSALL**

Date: NOV-07-97

We hereby certify the following Geochemical Analysis of 24 SOIL samples submitted OCT-28-97 by EFF COCKS.

Sample Number	Au-fire PPB
L8+50N 5+00E	2
L8+50N 5+25E	4
L8+50N 5+50E	6
L8+50N 5+75E	2
L8+50N 6+00E	5
L8+50N 6+25E	10
L8+50N 6+50E	4
L8+50N 6+75E	6
L8+50N 7+00E	5
L8+50N 7+25E	2
L8+50N 7+50E	6
L8+50N 7+75E	4
L8+50N 8+00E	5
L8+50N 8+25E	6
L8+50N 8+50E	3
L8+50N 8+75E	6
L8+50N 9+00E	4
L8+50N 9+25E	23
L8+50N 9+50E	5
L8+50N 9+75E	7
L8+50N 10+00E	11
L9+50N 0+00E	9
L9+50N 0+50E	5
L9+50N 0+75E	7

Certified by \_\_\_\_\_

MIN-EN LABORATORIES



**MINERAL  
ENVIRONMENTS  
LABORATORIES LTD.**

SPECIALISTS IN MINERAL ENVIRONMENTS  
CHEMISTS • ASSAYERS • ANALYSTS • GEOCHEMISTS

**VANCOUVER OFFICE:**  
8282 SHERBROOKE STREET  
VANCOUVER, B.C., CANADA V5X 4E8  
TELEPHONE (604) 327-3436  
FAX (604) 327-3423

**SMITHERS LAB:**  
3176 TATLOW ROAD  
SMITHERS, B.C., CANADA V0J 2N0  
TELEPHONE (604) 847-3004  
FAX (604) 847-3005

*Quality Assaying for over 25 Years*

**Geochemical Analysis Certificate**

7V-0783-SG14

Company: **BIG VALLEY RESOURCES INC.**  
Project: **S.E. NORDIK CLAIMS**  
Attn: **LLOYD TATTERSALL**

Date: NOV-07-97

We hereby certify the following Geochemical Analysis of 24 SOIL samples submitted OCT-28-97 by EFF COCKS.

Sample Number	Au - Fire PPB
L9+50N 1+00E	4
L9+50N 1+25E	1
L9+50N 1+50E	1
L9+50N 1+75E	6
L9+50N 2+00E	2
L9+50N 2+25E	2
L9+50N 2+50E	8
L9+50N 2+75E	3
L9+50N 3+00E	8
L9+50N 3+25E	5
L9+50N 3+50E	9
L9+50N 3+75E	7
L9+50N 4+00E	11
L9+50N 4+25E	8
L9+50N 4+50E	6
L9+50N 4+75E	4
L9+50N 5+00E	4
L9+50N 5+25E	6
L9+50N 5+50E	3
L9+50N 5+75E	7
L9+50N 6+00E	5
L9+50N 6+25E	6
L18+50N 0+00E	14
L18+50N 0+25E	24

Certified by \_\_\_\_\_

MIN-EN LABORATORIES



# MINERAL ENVIRONMENTS LABORATORIES LTD.

SPECIALISTS IN MINERAL ENVIRONMENTS  
CHEMISTS • ASSAYERS • ANALYSTS • GEOCHEMISTS

VANCOUVER OFFICE:  
8282 SHERBROOKE STREET  
VANCOUVER, B.C., CANADA V5X 4E8  
TELEPHONE (604) 327-3436  
FAX (604) 327-3423

SMITHERS LAB:  
3176 TATLOW ROAD  
SMITHERS, B.C., CANADA V0J 2N0  
TELEPHONE (604) 847-3004  
FAX (604) 847-3005

*Quality Assaying for over 25 Years*

## Geochemical Analysis Certificate

TV-0783-SG15

Company: **BIG VALLEY RESOURCES INC.**  
Project: **S.E. NORDIK CLAIMS**  
Attn: **LLOYD TATTERSALL**

Date: NOV-07-97

We hereby certify the following Geochemical Analysis of 24 SOIL samples submitted OCT-28-97 by EFF COCKS.

Sample Number	Au-fire PPB
L18+50N 0+50E	10
L18+50N 0+75E	14
L18+50N 1+00E	12
L18+50N 1+25E	6
L18+50N 1+50E	2
L18+50N 1+75E	8
L18+50N 2+00E	3
L18+50N 2+25E	10
L18+50N 2+50E	6
L18+50N 2+75E	7
L18+50N 3+00E	9
L18+50N 3+25E	3
L18+50N 3+50E	7
L18+50N 3+75E	2
L18+50N 4+00E	6
L18+50N 4+25E	5
L18+50N 4+50E	2
L18+50N 4+75E	5
L18+50N 5+00E	2
L18+50N 5+25E	3
L18+50N 5+50E	2
L18+50N 5+75E	4
L18+50N 6+00E	6
L19+50N 0+00E	17

Certified by \_\_\_\_\_

MIN-EN LABORATORIES



**MINERAL  
ENVIRONMENTS  
LABORATORIES LTD.**

SPECIALISTS IN MINERAL ENVIRONMENTS  
CHEMISTS • ASSAYERS • ANALYSTS • GEOCHEMISTS

**VANCOUVER OFFICE:**  
8282 SHERBROOKE STREET  
VANCOUVER, B.C., CANADA V5X 4E8  
TELEPHONE (604) 327-3436  
FAX (604) 327-3423

**SMITHERS LAB:**  
3176 TATLOW ROAD  
SMITHERS, B.C., CANADA V0J 2N0  
TELEPHONE (604) 847-3004  
FAX (604) 847-3005

*Quality Assaying for over 25 Years*

**Geochemical Analysis Certificate**

**7V-0783-SG16**

Company: **BIG VALLEY RESOURCES INC.**  
Project: **S.E. NORDIK CLAIMS**  
Attn: **LLOYD TATTERSALL**

Date: **NOV-07-97**

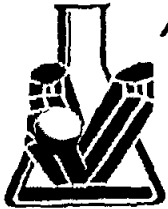
We hereby certify the following Geochemical Analysis of 24 SOIL samples submitted OCT-28-97 by EFF COCKS.

Sample Number	Au-fire PPH
L19+50N 0+25E	10
L19+50N 0+50E	6
L19+50N 0+75E	2
L19+50N 1+00E	8
L19+50N 1+25E	8
L19+50N 1+50E	11
L19+50N 1+75E	4
L19+50N 2+00E	1
L19+50N 2+25E	2
L19+50N 2+50E	32
L19+50N 2+75E	2
L19+50N 3+00E	7
L19+50N 3+25E	3
L19+50N 3+50E	5
L19+50N 3+75E	4
L19+50N 4+00E	1
L19+50N 4+25E	6
L19+50N 4+50E	3
L19+50N 4+75E	1
L19+50N 5+00E	4
L19+50N 5+25E	12
L19+50N 5+50E	6
L19+50N 5+75E	4
L19+50N 6+00E	1

Certified by \_\_\_\_\_ 

**MIN-EN LABORATORIES**





**MINERAL  
ENVIRONMENTS  
LABORATORIES LTD.**

SPECIALISTS IN MINERAL ENVIRONMENTS  
CHEMISTS • ASSAYERS • ANALYSTS • GEOCHEMISTS

**VANCOUVER OFFICE:**  
8282 SHERBROOKE STREET  
VANCOUVER, B.C., CANADA V5X 4E8  
TELEPHONE (604) 327-3436  
FAX (604) 327-3423

**SMITHERS LAB:**  
3176 TATLOW ROAD  
SMITHERS, B.C., CANADA V0J 2N0  
TELEPHONE (604) 847-3004  
FAX (604) 847-3005

*Quality Assaying for over 25 Years*

**Geochemical Analysis Certificate**

7V-0783-SG17

Company: **BIG VALLEY RESOURCES INC.**  
Project: **S.E. NORDIK CLAIMS**  
Attn: **LLOYD TATTERSALL**

Date: NOV-07-97

We hereby certify the following Geochemical Analysis of 24 SOIL samples submitted OCT-28-97 by EFF COCKS.

Sample Number	Au-fire PPB
L20+50N 0+00E	30
L20+50N 0+25E	19
L20+50N 0+50E	5
L20+50N 0+75E	4
L20+50N 1+00E	3
L20+50N 1+25E	3
L20+50N 1+50E	11
L20+50N 1+75E	4
L20+50N 2+00E	1
L20+50N 2+25E	3
L20+50N 2+50E	2
L20+50N 2+75E	5
L20+50N 3+00E	11
L20+50N 3+25E	16
L20+50N 3+50E	4
L20+50N 3+75E	5
L20+50N 4+00E	2
L20+50N 4+25E	1
L20+50N 4+50E	3
L20+50N 4+75E	1
L20+50N 5+00E	21
L20+50N 5+25E	2
L20+50N 5+50E	2
L21+50N 0+00E	2

Certified by \_\_\_\_\_

MIN-EN LABORATORIES



**MINERAL  
ENVIRONMENTS  
LABORATORIES LTD.**

SPECIALISTS IN MINERAL ENVIRONMENTS  
CHEMISTS • ASSAYERS • ANALYSTS • GEOCHEMISTS

**VANCOUVER OFFICE:**  
8282 SHERBROOKE STREET  
VANCOUVER, B.C., CANADA V5X 4E8  
TELEPHONE (604) 327-3436  
FAX (604) 327-3425

**SMITHERS LAB:**  
3176 TATLOW ROAD  
SMITHERS, B.C., CANADA V0J 2N0  
TELEPHONE (604) 847-3004  
FAX (604) 847-3005

*Quality Assaying for over 25 Years*

**Geochemical Analysis Certificate**

7V-0783-SG18

Company: **BIG VALLEY RESOURCES INC.**  
Project: **S.E. NORDIK CLAIMS**  
Attn: **LLOYD TATTERSALL**

Date: NOV-07-97

We hereby certify the following Geochemical Analysis of 24 SOIL samples submitted OCT-28-97 by EFF COCKS.

Sample Number	Au-fire PPB
L21+50N 0+25E	3
L21+50N 0+50E	9
L21+50N 0+75E	11
L21+50N 1+00E	1
L21+50N 1+25E	7
L21+50N 1+50E	9
L21+50N 1+75E	8
L21+50N 2+00E	27
L21+50N 2+25E	1
L21+50N 2+50E	1
L21+50N 2+75E	6
L21+50N 3+00E	5
L21+50N 3+25E	16
L21+50N 3+50E	1
L21+50N 3+75E	4
L21+50N 4+00E	2
L21+50N 4+25E	4
L21+50N 4+50E	1
L21+50N 4+75E	9
L21+50N 5+00E	2
L21+50N 5+25E	4
L21+50N 5+50E	7
L22+50N 0+00E	6
L22+50N 0+25E	5

Certified by \_\_\_\_\_

MIN-EN LABORATORIES



**MINERAL  
ENVIRONMENTS  
LABORATORIES LTD.**

SPECIALISTS IN MINERAL ENVIRONMENTS  
CHEMISTS • ASSAYERS • ANALYSTS • GEOCHEMISTS

**VANCOUVER OFFICE:**  
8282 SHERBROOKE STREET  
VANCOUVER, B.C., CANADA V5X 4E8  
TELEPHONE (604) 327-3436  
FAX (604) 327-3423

**SMITHERS LAB:**  
3176 TATLOW ROAD  
SMITHERS, B.C., CANADA V0J 2N0  
TELEPHONE (604) 847-3004  
FAX (604) 847-3005

*Quality Assaying for over 25 Years*

**Geochemical Analysis Certificate**

**7V-0783-SG19**

Company: **BIG VALLEY RESOURCES INC.**  
Project: **S.E. NORDIK CLAIMS**  
Att: **LLOYD TATTERSALL**

Date: NOV-07-97

We hereby certify the following Geochemical Analysis of 24 SOIL samples submitted OCT-28-97 by EFF COCKS.

Sample Number	Au-fire PPM
L22+50N 0+50E	6
L22+50N 0+75E	4
L22+50N 1+00E	6
L22+50N 1+25E	5
L22+50N 1+50E	2
L22+50N 1+75E	1
L22+50N 2+00E	12
L22+50N 2+25E	6
L22+50N 2+50E	8
L22+50N 2+75E	1
L22+50N 3+00E	7
L22+50N 3+25E	1
L22+50N 3+50E	9
L22+50N 3+75E	4
L22+50N 4+00E	3
L22+50N 4+25E	14
L22+50N 4+50E	3
L22+50N 4+75E	8
L22+50N 5+00E	1
L22+50N 5+25E	2
L22+50N 5+50E	4
L23+50N 0+00E	9
L23+50N 0+25E	4
L23+50N 0+50E	6

Certified by \_\_\_\_\_

MIN-EN LABORATORIES



**MINERAL  
ENVIRONMENTS  
LABORATORIES LTD.**

SPECIALISTS IN MINERAL ENVIRONMENTS  
CHEMISTS • ASSAYERS • ANALYSTS • GEOCHEMISTS

VANCOUVER OFFICE:  
9282 SHERBROOKE STREET  
VANCOUVER, B.C., CANADA V5X 4E8  
TELEPHONE (604) 327-3436  
FAX (604) 327-3423

SMITHERS LAB:  
3176 TATLOW ROAD  
SMITHERS, B.C., CANADA V0J 2N0  
TELEPHONE (604) 847-3004  
FAX (604) 847-3005

*Quality Assaying for over 25 Years*

**Geochemical Analysis Certificate**

TV-0783-SG20

Company: **BIG VALLEY RESOURCES INC.**  
Project: **S.E. NORDIK CLAIMS**  
Attn: **LLOYD TATTERSALL**

Date: NOV-07-97

We hereby certify the following Geochemical Analysis of 18 SOIL samples submitted OCT-28-97 by EFF COCKS.

Sample Number	Au-fire PPB
L23+50N 0+75E	3
L23+50N 1+00E	1
L23+50N 1+25E	8
L23+50N 1+50E	3
L23+50N 1+75E	1
L23+50N 2+00E	6
L23+50N 2+25E	4
L23+50N 2+50E	6
L23+50N 2+75E	7
L23+50N 3+00E	1
L23+50N 3+25E	8
L23+50N 3+50E	2
L23+50N 3+75E	4
L23+50N 4+00E	5
L23+50N 4+25E	5
L23+50N 4+50E	3
L23+50N 4+75E	9
L23+50N 5+00E	4

Certified by \_\_\_\_\_

MIN-EN LABORATORIES





















COMP: BIG VALLEY RESOURCES INC.  
 PROJ: S.E. NORDIK CLAIMS  
 ATTN: LLOYD TATTERSALL

MIN-EN LABS — ICP REPORT  
 8282 SHERBROOKE ST., VANCOUVER, B.C. V5X 4E8  
 TEL: (604) 327-3436 FAX: (604) 327-3423

FILE NO: 7V-0783-SJ19+20  
 DATE: 97/11/05  
 \* \* (ACT:F31)

SAMPLE NUMBER	AG PPM	AL %	AS PPM	BA PPM	BE PPM	BI PPM	CA %	CD PPM	CO PPM	CR PPM	CU PPM	FE %	GA PPM	K %	LI PPM	MG %	MN PPM	MO PPM	NA %	NI PPM	P PPM	PB PPM	SB PPM	SH PPM	SR PPM	TR PPM	TI %	U PPM	V PPM	W PPM	ZN PPM
L22+50N 0+50E	.1	1.23	3	71	.1	3	.38	.5	10	30	23	2.88	1	.05	11	.40	315	1	.01	13	570	18	10	1	45	1	.09	1	72.7	1	77
L22+50N 0+75E	.1	4.28	1	195	.6	1	.75	.1	29	60	127	5.42	1	.17	33	1.35	2607	3	.02	50	1640	79	36	1	91	1	.10	1	110.2	2	150
L22+50N 1+00E	.1	2.26	1	128	.1	4	.61	1.2	19	39	98	3.88	1	.10	23	.69	1178	3	.01	23	1330	37	19	1	70	1	.09	1	85.5	2	124
L22+50N 1+25E	.1	1.58	1	108	.1	4	.59	.5	15	32	39	3.61	1	.08	15	.63	547	1	.02	16	450	26	12	1	96	1	.12	1	88.8	1	74
L22+50N 1+50E	.1	2.00	1	113	.1	5	.42	.2	14	38	31	3.60	1	.05	17	.61	305	1	.01	21	390	31	18	1	61	1	.10	1	82.4	1	82
L22+50N 1+75E	.1	1.38	1	66	.1	5	.39	.4	10	28	71	2.85	1	.04	13	.39	202	1	.01	15	1180	18	13	1	37	1	.09	1	64.9	2	68
L22+50N 2+00E	.1	2.15	1	115	.1	3	.63	.1	17	42	538	3.61	1	.09	16	.75	612	4	.02	23	770	35	18	1	69	1	.09	1	84.0	2	68
L22+50N 2+25E	.1	1.28	1	85	.1	2	.36	.6	12	24	26	2.62	1	.05	12	.44	544	1	.01	14	1080	24	12	1	42	1	.07	1	57.7	1	71
L22+50N 2+50E	.1	1.10	5	89	.1	2	.37	.5	8	21	22	2.16	1	.04	11	.37	182	1	.01	12	1390	17	11	1	38	1	.06	1	47.0	1	42
L22+50N 2+75E	.1	2.14	1	99	.1	4	.28	.5	13	37	32	3.31	1	.08	19	.60	255	1	.01	21	1260	33	19	1	38	1	.10	1	69.8	1	85
L22+50N 3+00E	.1	1.64	1	107	.1	3	.38	.3	12	34	25	3.14	1	.06	14	.49	533	1	.01	20	1310	26	15	1	46	1	.09	1	74.3	2	91
L22+50N 3+25E	.1	2.41	1	218	.1	5	.35	.7	15	34	34	4.06	1	.06	18	.49	593	2	.01	25	2470	33	26	1	48	1	.09	1	88.0	2	116
L22+50N 3+50E	.1	.84	2	62	.1	1	.32	.2	8	21	15	1.86	1	.04	9	.34	195	1	.01	11	480	12	6	1	32	1	.06	1	42.0	1	46
L22+50N 3+75E	.1	.71	2	80	.1	3	.19	.8	7	17	14	1.81	1	.04	10	.24	238	1	.01	7	350	12	6	1	28	1	.06	1	42.6	1	57
L22+50N 4+00E	.1	1.47	1	127	.1	5	.26	1.0	12	31	32	2.96	1	.04	15	.43	396	2	.01	16	1400	22	15	1	47	1	.09	1	65.8	2	71
L22+50N 4+25E	.1	1.01	1	67	.1	2	.26	.1	8	24	30	2.06	1	.05	8	.37	151	1	.01	14	1200	16	10	1	22	1	.07	1	38.9	1	43
L22+50N 4+50E	.1	.84	5	41	.1	2	.32	.1	9	19	55	1.81	1	.04	9	.36	267	1	.01	14	680	14	5	1	26	1	.06	1	38.2	1	35
L22+50N 4+75E	.1	.98	1	57	.1	2	.43	.1	11	32	29	2.35	1	.07	8	.56	270	1	.01	15	800	18	8	1	32	1	.08	1	53.5	1	42
L22+50N 5+00E	.1	.96	4	48	.1	4	.32	.1	11	28	17	2.22	1	.05	10	.39	350	1	.01	11	770	16	9	1	24	1	.08	1	50.5	1	60
L22+50N 5+25E	.1	.87	1	52	.1	2	.33	.1	8	27	17	1.78	1	.05	8	.40	173	1	.01	10	720	15	5	1	31	1	.08	1	41.6	1	42
L22+50N 5+50E	.2	1.18	8	69	.1	4	.41	.5	12	39	34	2.89	1	.06	10	.54	430	1	.01	17	530	20	11	1	55	1	.09	1	69.1	1	48
L23+50N 0+00E	.1	4.18	1	173	.1	4	.20	.7	21	52	87	4.73	1	.10	22	.81	316	2	.01	44	1560	81	41	1	43	1	.10	1	98.7	2	131
L23+50N 0+25E	.1	1.96	1	153	.1	3	.29	1.1	14	30	45	3.32	1	.05	22	.51	304	1	.01	18	1530	28	19	1	54	1	.08	1	79.4	2	97
L23+50N 0+50E	.1	1.52	1	138	.1	3	.37	.9	12	31	27	3.14	1	.05	14	.48	377	1	.01	18	1450	23	15	1	64	1	.09	1	71.4	2	78
L23+50N 0+75E	.1	.99	4	87	.1	17	1.93	.7	16	3	18	4.19	1	.05	1	.13	1500	3	.01	6	1200	9	12	1	136	1	.22	1	101.0	2	88
L23+50N 1+00E	.1	1.44	1	119	.1	4	.41	.1	13	28	44	3.03	1	.05	14	.48	584	2	.01	15	490	23	12	1	66	1	.10	1	80.7	1	84
L23+50N 1+25E	.1	1.77	1	151	.1	1	.84	1.0	16	24	111	3.00	1	.07	15	.56	1538	4	.01	19	990	34	14	1	82	1	.07	1	68.6	1	105
L23+50N 1+50E	.1	1.62	1	152	.1	4	.57	.4	13	28	57	3.23	1	.07	14	.50	623	2	.01	16	1640	28	15	1	77	1	.10	1	74.0	2	93
L23+50N 1+75E	.1	.91	1	97	.1	4	.42	.1	9	29	30	2.58	1	.07	6	.30	266	1	.01	9	850	13	9	1	44	1	.10	1	67.0	2	56
L23+50N 2+00E	.1	2.22	1	122	.1	1	.62	.1	19	46	61	4.06	1	.14	17	.97	692	1	.02	29	920	37	15	1	105	1	.12	1	95.8	1	66
L23+50N 2+25E	.1	1.78	1	102	.1	3	.38	.1	13	34	30	3.21	1	.07	13	.58	334	1	.01	18	560	28	14	1	67	1	.09	1	71.6	1	55
L23+50N 2+50E	.1	1.77	1	95	.1	3	.38	.1	14	37	36	3.34	1	.08	12	.56	548	1	.01	19	1160	27	15	1	60	1	.09	1	79.3	2	71
L23+50N 2+75E	.1	1.10	1	94	.1	3	.43	.3	11	26	29	2.52	1	.05	8	.42	531	2	.01	14	730	19	10	1	49	1	.08	1	61.9	1	55
L23+50N 3+00E	.1	1.89	1	111	.1	5	.27	.2	13	43	26	3.58	1	.05	14	.52	297	2	.01	19	890	27	17	1	50	1	.09	1	90.8	2	66
L23+50N 3+25E	.1	1.89	1	129	.1	3	.42	.1	12	36	22	3.67	1	.07	18	.54	331	2	.01	25	1940	26	17	1	49	1	.08	1	75.3	2	82
L23+50N 3+50E	.1	1.36	1	99	.1	2	.38	.1	11	26	15	2.82	1	.05	16	.46	495	1	.01	14	1330	21	12	1	45	1	.08	1	61.0	1	79
L23+50N 3+75E	.1	1.36	1	85	.1	4	.40	.1	11	33	18	2.94	1	.07	15	.52	388	1	.01	15	730	22	11	1	66	1	.10	1	75.2	1	66
L23+50N 4+00E	.1	1.37	1	107	.1	4	.39	.1	12	35	19	3.12	1	.05	14	.47	345	1	.01	17	1480	21	12	1	61	1	.10	1	72.2	2	72
L23+50N 4+25E	.1	1.35	1	76	.1	4	.48	.1	13	32	253	2.46	1	.05	14	.43	336	4	.01	14	400	25	12	1	50	1	.08	1	65.1	1	52
L23+50N 4+50E	.1	.97	1	49	.1	4	.28	.1	9	24	51	2.28	1	.04	10	.36	218	2	.01	12	530	13	10	1	31	1	.08	1	55.1	1	44
L23+50N 4+75E	.1	1.74	1	99	.1	5	.64	.1	17	20	72	3.66	1	.04	23	.84	632	2	.01	12	1350	27	13	1	86	1	.14	1	94.5	1	113
L23+50N 5+00E	.1	1.26	1	90	.1	5	.52	.1	12	26	240	2.97	1	.05	13	.49	438	3	.01	13	590	19	12	1	69	1	.09	1	71.1	1	68

TOTAL: 111



ASSAYING  
 GEOCHEMISTRY  
 ANALYTICAL CHEMISTRY  
 ENVIRONMENTAL TESTING

10041 E. Trans Canada Hwy. P.R. #2, Kamloops, B.C. V2C 6T4 Phone: (250) 573-5700  
 Fax: (250) 573-4557

**CERTIFICATE OF ASSAY : AK 97-1276**

BIG VALLEY RESOURCES  
 BOX 4210  
 WILLIAMS LAKE, B.C.  
 V2G 2V2

14-Nov-97

ATTENTION: LLOYD TATTERSALL/STU TENNANT

No. of samples received: 76  
 Sample type: CORE  
 PROJECT #: NONE GIVEN  
 SHIPMENT #: NONE GIVEN  
 Samples submitted by: BIG VALLEY

DDH. 97-119

ET #.	Tag #	Au (g/t)	Au (oz/t)	Cu (%)
1	279501	<.03	<.001	0.08 3-4 m
2	279502	0.03	0.001	0.17 ↓
3	279503	0.03	0.001	0.15
4	279504	0.08	0.002	0.11
5	279505	<.05	<.001	0.09
6	279506	<.03	<.001	0.04
7	279507	0.03	0.001	0.08
8	279508	<.03	<.001	0.04
9	279509	<.03	<.001	0.03
10	279510	<.03	<.001	0.05
11	279511	<.03	<.001	0.07
12	279512	<.03	<.001	0.06
13	279513	<.03	<.001	0.05
14	279514	0.03	0.001	0.03
15	279516	<.03	<.001	0.01
16	279516	<.03	<.001	0.01
17	279517	<.03	<.001	0.01
18	279518	<.03	<.001	0.01
19	279519	<.03	<.001	0.01
20	279520	0.10	0.003	0.02
21	279521	0.06	0.002	0.03
22	279522	<.03	<.001	0.01 44-46 m

*[Signature]*  
 ECO-TECH LABORATORIES LTD.  
 Per Frank J. Pezzotti, A.Sc.T  
 B.C. Certified Assayer

14-Nov-97

BIG VALLEY RESOURCES AK 97-1276

ET #.	Tag #	Au (g/t)	Au (oz/t)	Cu (%)
23	279523	0.03	0.001	0.08 46-48 m
24	279524	<.03	<.001	0.03 ↓
25	279525	<.03	<.001	0.02
26	279526	<.03	<.001	0.02
27	279527	0.07	0.002	0.02
28	279528	0.03	0.001	0.02
29	279529	<.03	<.001	0.01
30	279530	<.03	<.001	0.01
31	279531	<.03	<.001	0.01
32	279532	<.03	<.001	0.01
33	279533	<.03	<.001	0.01
34	279534	<.03	<.001	0.01
35	279535	<.03	<.001	0.01
36	279536	<.03	<.001	0.01
37	279537	<.03	<.001	0.01
38	279538	<.03	<.001	<.01
39	279539	<.03	<.001	<.01
40	279540	<.03	<.001	<.01
41	279541	<.03	<.001	0.01
42	279542	<.03	<.001	0.01
43	279543	<.03	<.001	0.01
44	279544	<.03	<.001	<.01
45	279545	<.03	<.001	<.01
46	279546	<.03	<.001	0.01
47	279547	<.03	<.001	0.01
48	279548	<.03	<.001	0.01
49	279549	<.03	<.001	0.01
50	279550	<.03	<.001	0.01
51	279551	<.03	<.001	0.01
52	279552	0.05	0.001	0.01
53	279553	0.05	0.001	0.01
54	279554	0.18	0.005	0.01
55	279555	<.03	<.001	0.01
56	279556	0.11	0.003	0.02
57	279557	<.03	<.001	0.01
58	279558	<.03	<.001	0.01
59	279559	<.03	<.001	0.01
60	279560	0.04	0.001	0.04
61	279561	0.04	0.001	0.02
62	279562	<.03	<.001	0.01
63	279563	<.03	<.001	0.01
64	279564	<.03	<.001	0.01
65	279365	<.03	<.001	0.02 130-132 m

*[Signature]*  
 ECO-TECH LABORATORIES LTD.  
 Frank J. Pezzolli A.Sc.T.  
 B.C. Certified Assayer



14-NOV-97

BIG VALLEY RESOURCES AK 97-1276

ET #.	Tag #	Au (g/t)	Au (oz/t)	Cu (%)
		0.09	0.003	0.03
66	279566	<.03	<.001	0.02
67	279567	0.06	0.002	0.04
66	279568	0.03	0.001	0.02
68	279569	0.03	0.001	0.01
70	279570	0.03	0.001	0.01
71	279571	0.13	0.004	0.04
72	279572	0.08	0.002	0.01
73	279573	0.03	0.001	0.01
74	279574	0.15	0.004	0.01
75	279575	0.08	0.002	0.02
76	279576			

152-153.3 E.O.H. PDH 119

QC/DATA:

Resplit:


1	279501	<.03	<.001	0.08
36	279536	1.03	0.030	0.01
71	279571	<.03	<.001	0.01

Repeat:

1	279501	<.03	<.001	0.08
10	279510	<.03	<.001	-
19	279519	<.03	<.001	-
19	279519	<.03	<.001	<.01
36	279536	<.03	<.001	-
45	279545	0.17	0.005	-
54	279554	<.03	<.001	0.01
71	279571			

Standard:

STD-M	1.46	0.043	-
STD-M	1.62	0.047	-
STD-M	1.60	0.047	-
CPb-1			0.25

per   
**ECO-TECH LABORATORIES LTD.**  
 Frank J. Pezzotti, A.Sc.T.  
 B.C. Certified Assayer

XLS/97Big Valley  
 fax: 243-2335  
 cc: fax: 257-3650 stu tenant



97-120

ASSAYING  
GEOCHEMISTRY  
ANALYTICAL CHEMISTRY  
ENVIRONMENTAL TESTING

10041 E. Trans Canada Hwy., P.R. 42, Kamloops, B.C. V2C 6T4 Phone (250) 573-5700  
Fax (250) 573-4557

**CERTIFICATE OF ASSAY AK 97-1280**

BIG VALLEY RESOURCES  
BOX 4210  
WILLIAMS LAKE, B.C.  
V2G 2V2

17-Nov-97

ATTENTION: LLOYD TATTERSALL/STU TENNANT

No. of samples received: 76  
Sample type: CORE  
PROJECT #: NONE GIVEN  
SHIPMENT #: NONE GIVEN  
Samples submitted by: BIG VALLEY

Post-It® Fax Note	7571E	Date	Nov 17	# of pages	3
To	Big Valley		From		
Con/Dest.			Co		
Phone #			Phone #		
Fax #			Fax #		

DDH. 97-120

ET #.	Tag #	Au (g/t)	Au (oz/t)	Cu (%)
1	279577	<.03	<.001	0.04
2	279578	<.03	<.001	0.03
3	279579	<.03	<.001	0.04
4	279580	<.03	<.001	0.04
5	279581	<.03	<.001	0.04
6	279582	<.03	<.001	0.03
7	279583	0.18	0.005	0.06
8	279584	<.03	<.001	0.02
9	279585	0.04	0.001	0.04
10	279586	0.21	0.006	0.12
11	279587	0.31	0.009	0.15
12	279588	0.06	0.002	0.04
13	279589	<.03	<.001	0.02
14	279590	<.03	<.001	0.02
15	279591	0.06	0.002	0.02
16	279592	<.03	<.001	0.02
17	279593	<.03	<.001	0.02
18	279594	<.03	<.001	0.02
19	279595	<.03	<.001	0.02
20	279596	<.03	<.001	0.01
21	279597	<.03	<.001	0.03

3-4 m  
↓

42-44 m

*Frank J. Pezzotti*  
Eco-TECH LABORATORIES LTD.  
per Frank J. Pezzotti, A.Sc.T.  
B.C. Certified Assayer

BIG VALLEY RESOURCES AK 97-1260

17-Nov-97

ET #.	Tag #	Au (g/t)	Au (oz/t)	Cu (%)
22	279598	<.03	<.001	0.03 44-46m
23	279599	<.03	<.001	0.03
24	279600	0.04	0.001	0.03 ↓
25	279601	<.03	<.001	0.02
26	279602	<.03	<.001	0.04
27	279603	<.03	<.001	0.01
28	279604	<.03	<.001	0.01
29	279605	<.03	<.001	0.01
30	279606	<.03	<.001	0.01
31	279607	<.03	<.001	0.02
32	279608	<.03	<.001	0.03
33	279609	<.03	<.001	0.03
34	279610	0.03	0.001	0.01
35	279611	0.06	0.002	0.11
36	279612	0.09	0.003	0.15
37	279613	0.09	0.002	0.19
38	279614	<.03	<.001	0.03
39	279615	<.03	<.001	0.02
40	279616	0.03	0.001	0.09
41	279617	0.05	0.001	0.17
42	279618	<.03	<.001	0.04
43	279619	0.11	0.003	0.07
44	279620	0.06	0.002	0.02
45	279621	<.03	<.001	0.06
46	279622	<.03	<.001	0.02
47	279623	<.03	<.001	0.02
48	279624	0.04	0.001	0.09
49	279625	<.03	<.001	0.01
50	279626	<.03	<.001	0.02
51	279627	<.03	<.001	0.05
52	279628	<.03	<.001	0.03
53	279629	<.03	<.001	0.05
54	279630	<.03	<.001	0.03
55	279631	<.03	<.001	0.04
56	279632	<.03	<.001	0.03
57	279633	<.03	<.001	0.05
58	279634	0.07	0.002	0.10
59	279635	0.04	0.001	0.05
50	279636	<.03	<.001	0.01
61	279637	0.03	0.001	0.02
62	279638	<.03	<.001	0.03
63	279639	<.03	<.001	0.02
64	279640	<.03	<.001	0.01 128-130m

ECO-TECH LABORATORIES LTD.

Frank J. Pezzotti, A.Sc.T

B.C. Certified Assayer

BIG VALLEY RESOURCES AK 97-1280

17-Nov-97

ET #.	Tag #	Au (g/t)	Au (oz/t)	Cu (%)
65	279641	<.03	<.001	0.01
66	279642	<.03	<.001	0.01
67	279643	<.03	<.001	0.01
58	279644	<.03	<.001	0.06
69	279645	0.04	0.001	0.08
70	279646	<.03	<.001	0.06
71	279647	<.03	<.001	0.06
72	279648	<.03	<.001	0.02
73	279649	<.03	<.001	0.02
74	279650	0.12	0.002	0.04
75	279651	0.12	0.003	0.04
76	279652	0.20	0.006	0.04

130-132m

152-154.5 E.O.H. 97-120

**QC/DATA:**

**Resplit:**

1	279577	<.03	<.001	0.03
36	279512	0.07	0.002	0.18
71	279647	<.03	<.001	0.05

**Repeat:**

1	279577	<.03	<.001	0.03
10	279586	0.22	0.006	-
19	279595	<.03	<.001	-
36	279612	0.08	0.002	-
45	279621	<.03	<.001	-
54	279630	<.03	<.001	-
71	279647	<.03	<.001	-

**Standard:**

STD-M	1.40	0.041	-
STD-M	1.46	0.043	-
STD-M	1.43	0.042	-
CPb-1	-	-	0.25
CPb-1	-	-	0.25

*per*  
 EGO-TECH LABORATORIES LTD.  
 Frank J. Pezzetti, A.Sc.T  
 B.C. Certified Assayer

XLS/97Big Valley  
 fax: 243-2335  
 cc: fax: 257-3650 stu tenant



DDH #97-121

ASSAYING  
GEOCHEMISTRY  
ANALYTICAL CHEMISTRY  
ENVIRONMENTAL TESTING

10041 E. Trans Canada Hwy. R.R. #2, Kamloops, B.C. V2C 6T1 Phone (250) 573-5700  
Fax (250) 573-4557

**CERTIFICATE OF ASSAY AK 97-1287**

BIG VALLEY RESOURCES  
BOX 4210  
WILLIAMS LAKE, B.C.  
V2G 2V2

18-Nov-97

ATTENTION: LLOYD TATTERSALL/STU TENNANT

No. of samples received: 75  
Sample type: CORE  
PROJECT #: NONE GIVEN  
SHIPMENT #: NONE GIVEN  
Samples submitted by: BIG VALLEY

Post-it Fax Note	7671E	Date	Nov 21 1997	# of Pages	6
To	Big Valley		From		
Company			Co		
Project #			Phone #		
Fax #			Fax #		

DDH #97-121

ET #.	Tag #	Au (g/t)	Au (oz/t)	Cu (%)
1	279653	0.10	0.003	0.06
2	279654	0.04	0.001	0.01
3	279655	<.03	<.001	<.01
4	279656	<.03	<.001	0.02
5	279657	<.03	<.001	<.01
6	279658	<.03	<.001	<.01
7	279659	0.39	0.011	0.12
8	279660	<.03	<.001	0.02
9	279661	0.07	0.002	0.07
10	279662	0.09	0.003	0.04
11	279663	0.03	0.001	0.04
12	279664	<.03	<.001	0.04
13	279665	0.03	0.001	0.01
14	279666	0.09	0.002	0.03
15	279667	0.26	0.008	0.17
16	279668	0.08	0.002	0.06
17	279669	<.03	<.001	<.01
18	279670	<.03	<.001	<.01
19	279671	<.03	<.001	0.01
20	279672	<.03	<.001	0.01
21	279673	<.03	<.001	0.01
22	279674	<.03	<.001	0.01

4-6m  
↓  
121  
N 700  
E 250  
L 153.3  
OB 4m

*[Signature]*  
ECO-TECH LABORATORIES LTD.  
Frank J. Pezzotti, A.Sc.T  
B.C. Certified Assayer

DOH # 97-121

BIG VALLEY RESOURCES AK 97-1287

18-Nov-97

ET #.	Tag #	Au (g/t)	Au (oz/t)	Cu (%)
23	279675	<.03	<.001	0.01 43-50 m
24	279676	<.03	<.001	0.01
25	279677	<.03	<.001	0.01
26	279678	0.04	0.001	0.04
27	279679	<.03	<.001	0.01
28	279680	<.03	<.001	0.01
29	279681	<.03	<.001	0.01
30	279682	<.03	<.001	0.02
31	279683	<.03	<.001	0.01
32	279684	<.03	<.001	0.01
33	279685	<.03	<.001	<.01
34	279686	<.03	<.001	<.01
35	279687	0.04	0.001	0.02
36	279688	0.05	0.001	0.06
37	279689	<.03	<.001	0.02
38	279690	<.03	<.001	0.05
39	279691	<.03	<.001	<.01
40	279692	<.03	<.001	<.01
41	279693	<.03	<.001	<.01
42	279694	<.03	<.001	<.01
43	279695	0.09	0.003	<.01
44	279696	0.03	0.001	0.06
45	279697	0.03	0.001	0.03
46	279698	<.03	<.001	<.01
47	279699	<.03	<.001	<.01
48	279700	<.03	<.001	<.01
49	279701	0.03	0.001	<.01
50	279702	<.03	<.001	<.01
51	279703	<.03	<.001	<.01
52	279704	<.03	<.001	<.01
53	279705	<.03	<.001	<.01
54	279705	<.03	<.001	<.01
55	279707	<.03	<.001	<.01
56	279708	<.03	<.001	<.01
57	279709	0.03	0.001	0.01
58	279710	<.03	<.001	<.01
59	279711	<.03	<.001	<.01
60	279712	0.21	0.006	<.01
61	279713	<.03	<.001	<.01
62	279714	0.03	0.001	<.01
63	279715	<.03	<.001	<.01
64	279716	0.03	0.001	<.01
65	279717	<.03	<.001	<.01 132-134 m

*Frank J. Pezzolti*  
 ECO-TECH LABORATORIES LTD.  
 Frank J. Pezzolti, A.Sc.T  
 S.C. Certified Assayer

BIG VALLEY RESOURCES AK 97-1287

18-Nov-97

ET #.	Tag #	Au (g/t)	Au (oz/t)	Cu (%)	
66	279718	<.03	<.001	<.01	134-136 m
67	279719	<.03	<.001	<.01	
68	279720	<.03	<.001	<.01	↓
69	279721	0.03	0.001	<.01	
70	279722	<.03	<.001	<.01	
71	279723	<.03	<.001	<.01	
72	279724	<.03	<.001	<.01	
73	279725	<.03	<.001	<.01	
74	279726	<.03	<.001	<.01	
75	279727	<.03	<.001	<.01	152-153.3 m E.O.H. 97-121

**QC/DATA:**

**Resplit:**

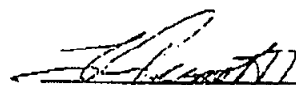
1	279653	0.09	0.003	0.06
36	279688	0.09	0.002	0.06
71	279723	<.03	<.001	<.01

**Repeat:**

1	279653	0.10	0.003	0.06
10	279662	0.10	0.003	-
19	279671	<.03	<.001	-
36	279688	0.05	0.001	-
38	279690	-	-	<.01
45	279697	0.03	0.001	-
54	279706	<.03	<.001	-
71	279723	<.03	<.001	-

**Standard:**

STD-M		1.50	0.044	-
STD-M		1.65	0.046	-
STD-M		1.50	0.044	-
CPB-1		-	-	0.25

  
**ECO-TECH LABORATORIES LTD.**  
 Frank J. Pezzotti, A.Sc.T.  
 B.C. Certified Assayer

XLS/97Big Valley  
 fax: 243-2335  
 cc: fax: 257-3650 stu tenant



ASSAYING  
GEOCHEMISTRY  
ANALYTICAL CHEMISTRY  
ENVIRONMENTAL TESTING

10041 E. Trans-Canada Hwy., R.F. #2, Kamloops, B.C. V2C 6T4 Phone (250) 573-5700  
Fax (250) 573-4997

Hole 97-122

**CERTIFICATE OF ASSAY AK 97-1295**

BIG VALLEY RESOURCES  
BOX 4210  
WILLIAMS LAKE, B.C.  
V2G 2V2

21-Nov-97

ATTENTION: LLOYD TATTERSALL/STU TENNANT

No. of samples received: 76  
Sample type: CORE  
PROJECT #: NONE GIVEN  
SHIPMENT #: NONE GIVEN  
Samples submitted by: BIG VALLEY

Post-it Fax Note	7671E	Date	Nov 21	# of Pages	3
To	Big Valley		From		
Copy to			CC		
Phone #			Phone #		
Fax #			Fax #		

ET #.	Tag #	Au (g/t)	Au (oz/t)	Cu (%)
1	279728	0.03	0.001	0.03
2	279729	<.03	<.001	0.02
3	279730	<.03	<.001	0.02
4	279731	<.03	<.001	0.05
5	279732	0.15	0.004	0.15
6	279733	0.07	0.002	0.11
7	279734	0.05	0.001	0.02
8	279735	0.15	0.004	0.03
9	279736	0.02	0.001	0.02
10	279737	0.25	0.007	0.01
11	279738	0.28	0.008	0.04
12	279739	0.03	0.001	0.03
13	279740	0.08	0.002	0.03
14	279741	0.03	0.001	0.03
15	279742	0.04	0.001	0.04
16	279743	0.05	0.001	0.03
17	279744	0.12	0.003	0.05
18	279745	0.06	0.002	0.02
19	279746	0.06	0.003	0.01
20	279747	0.04	0.001	0.01
21	279748	0.11	0.003	0.01
22	279749	0.02	0.001	0.01

C-4m DPH 97-122  
↓

44-46 m

per ECO-TECH LABORATORIES LTD.  
Frank J. Pezzotti, A.Sc.T.  
B.C. Certified Assayer




BIG VALLEY RESOURCES AK 97-1295

21-Nov-97

ET #.	Tag #	Au (g/t)	Au (oz/t)	Cu (%)
23	279750	<.03	<.001	0.01
24	279751	<.03	<.001	0.01
25	279752	0.03	0.001	0.01
26	279753	<.03	<.001	0.03
27	279754	<.03	<.001	0.01
28	279755	<.03	<.001	0.04
29	279756	<.03	<.001	0.03
30	279757	<.03	<.001	0.03
31	279758	<.03	<.001	0.02
32	279759	0.08	0.002	0.07
33	279760	0.08	0.002	0.04
34	279761	<.03	<.001	0.03
35	279762	<.03	<.001	0.02
36	279763	<.03	<.001	0.01
37	279764	<.03	<.001	0.03
38	279765	<.03	<.001	0.04
39	279766	<.03	<.001	0.02
40	279767	<.03	<.001	0.02
41	279768	0.03	0.001	0.02
42	279769	<.03	<.001	0.02
43	279770	0.06	0.002	0.02
44	279771	<.03	<.001	0.01
45	279772	0.04	0.001	0.02
46	279772	<.03	<.001	0.01
47	279774	<.03	<.001	0.01
48	279775	<.03	<.001	0.01
49	279776	<.03	<.001	0.02
50	279777	0.05	0.001	0.01
51	279778	0.04	0.001	0.01
52	279779	<.03	<.001	0.01
53	279780	<.03	<.001	0.01
54	279781	<.03	<.001	0.01
55	279782	0.04	0.001	0.01
56	279783	<.03	<.001	0.01
57	279784	<.03	<.001	0.01
58	279785	<.03	<.001	0.01
59	279786	0.17	0.005	0.01
60	279787	<.03	<.001	0.01
61	279788	<.03	<.001	0.01
62	279789	<.03	<.001	0.01
63	279790	<.03	<.001	0.01
64	279791	0.03	0.001	0.01
65	279792	<.03	<.001	0.01

46-48m  
↓

130-132m

per   
**ECO-TECH LABORATORIES LTD.**  
 Frank J. Pezzotti, A.Sc.T  
 B.C. Certified Assayer

BIG VALLEY RESOURCES AK 97-1295

21-Nov-97

ET #.	Tag #	Au (g/t)	Au (oz/t)	Cu (%)	
66	279793	<.03	<.001	0.01	132-134m
67	279794	<.03	<.001	0.01	↓
68	279795	<.03	<.001	0.01	
69	279796	<.03	<.001	0.01	
70	279797	<.03	<.001	0.01	
71	279798	<.03	<.001	0.01	
72	279799	<.03	<.001	0.02	
73	279800	<.03	<.001	0.01	
74	279801	0.06	0.002	0.06	
75	279802	<.03	<.001	0.02	
76	279803	<.03	<.001	0.02	152-154.5 EOH 97-122

QC/DATA:

Resplit:

1	279728	0.03	0.001	0.03
36	279763	<.03	<.001	0.01
71	279798	<.03	<.001	0.01

Repeat:

1	279728	0.03	0.001	0.03
10	279737	0.33	0.010	-
19	279746	0.09	0.003	-
36	279763	<.03	<.001	-
39	279766	-	-	0.02
45	279772	0.03	0.001	-
54	279781	<.03	<.001	-
71	279798	<.03	<.001	-

Standard:

STD-M	1.50	0.044	-
STD-M	1.50	0.044	-
STD-M	1.44	0.042	-
Cpb-1	-	-	0.25

  
 ECO-TECH LABORATORIES LTD.

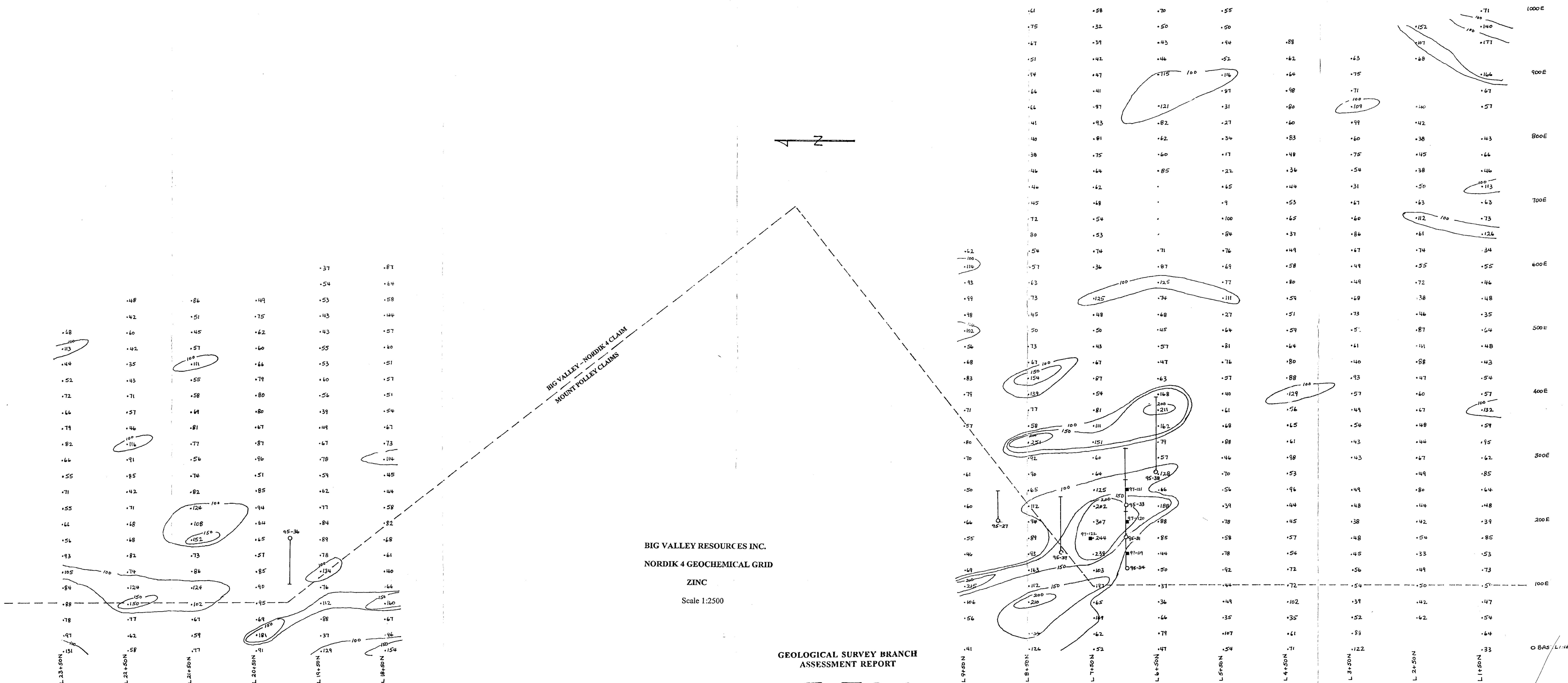
per Frank J. Pezzotti, A.Sc.T.  
 B.C. Certified Assayer

XLS/97Big Valley  
 fax: 243-2335  
 cc: fax: 257-3650 stu tennant

**Appendix III**

**Geochemical Grid Maps**

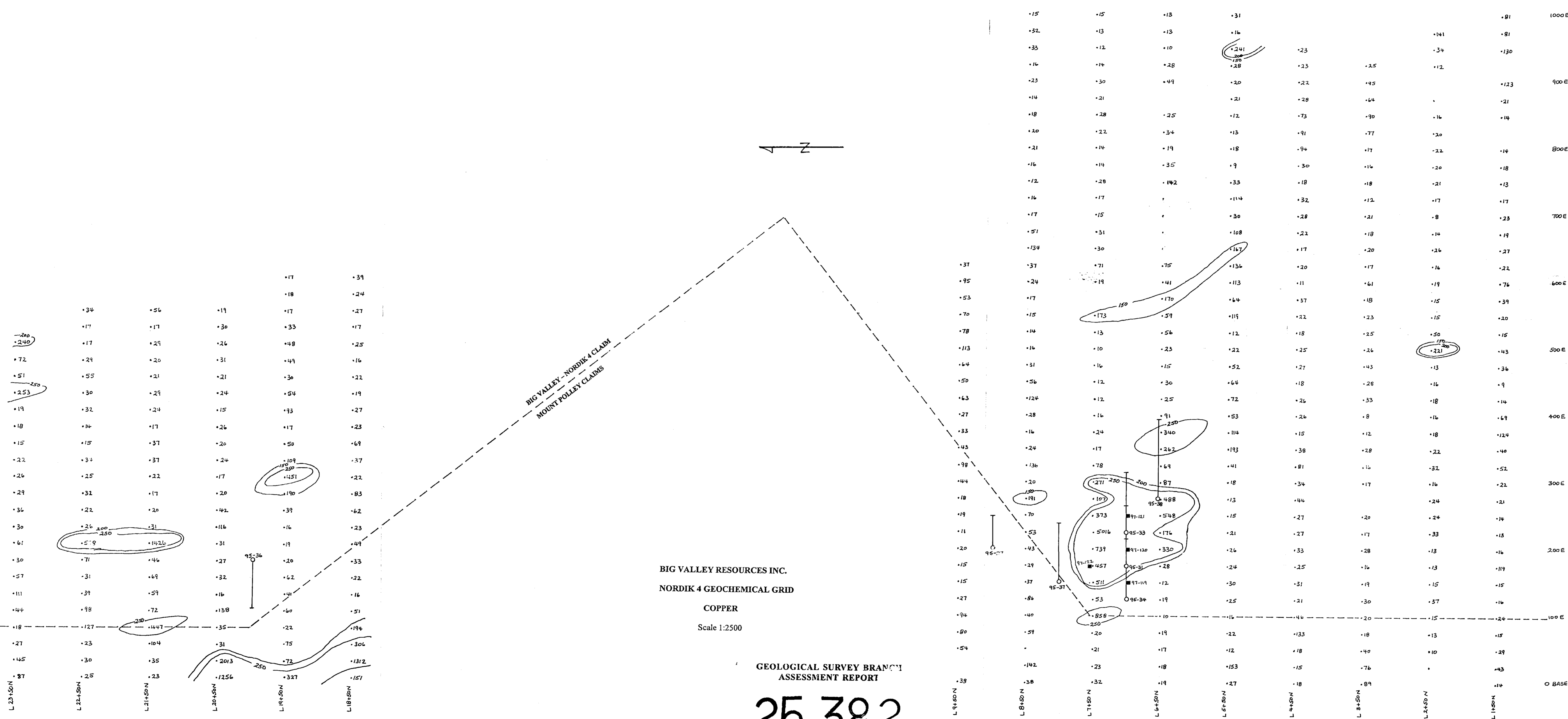
**1:2,500**



BIG VALLEY RESOURCES INC.  
 NORDIK 4 GEOCHEMICAL GRID  
 ZINC  
 Scale 1:2500

GEOLOGICAL SURVEY BRANCH  
 ASSESSMENT REPORT  
 25,382

O BAS L 11E

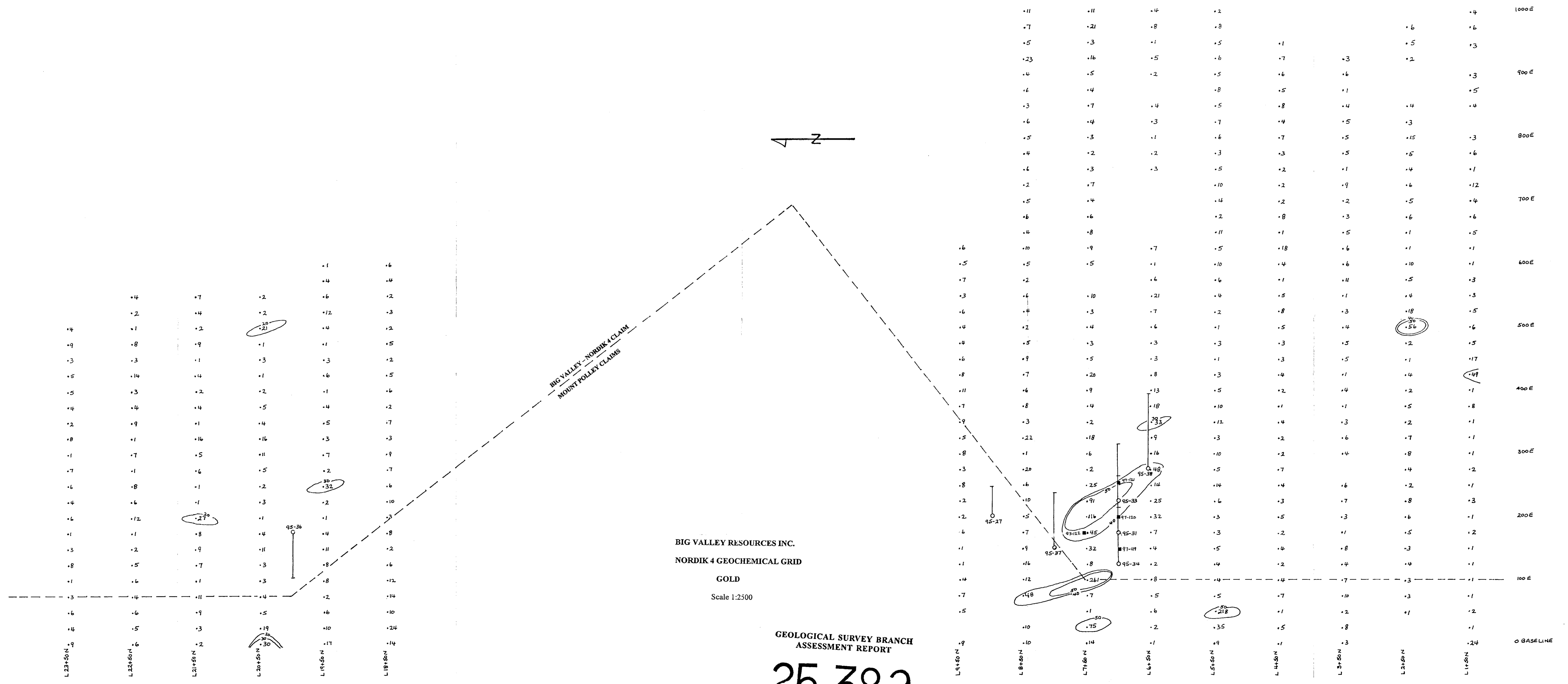


BIG VALLEY RESOURCES INC.  
 NORDIK 4 GEOCHEMICAL GRID  
 COPPER  
 Scale 1:2500

GEOLOGICAL SURVEY BRANCH  
 ASSESSMENT REPORT

25,382

O BASELINE



BIG VALLEY RESOURCES INC.  
 NORDIK 4 GEOCHEMICAL GRID  
 GOLD  
 Scale 1:2500

GEOLOGICAL SURVEY BRANCH  
 ASSESSMENT REPORT  
 25,382