

RECEIVED

MAY 28 1999

Gold Commissioner's Office
VANCOUVER, B.C.

GEOLOGICAL REPORT
on the
MURRAY GROUP
BLACKWATER RIVER AREA
CARIBOO MINING DIVISION
BRITISH COLUMBIA

(Mineral Claims: List 7 and 8)
53° 14' N - 123° 26' W - NTS 93G 3W

By the Proprietor:

W.E. (Bill) Poole
Box 4651, Quesnel, B.C. V2J 3J8

May 23, 1999

GEOLOGICAL SURVEY BRANCH
ASSESSMENT REPORT

25,911

TABLE OF CONTENTS

	<u>Page No.</u>
Summary	1
Location and Access	1
Physiography, Vegetation, Climate	1
Claims	4
History and Previous Work	4
Regional Geology	4
Property Geology	4
Mineralization and Alteration	6
Exploration Potential	6

List of Figures:

Figure 1	-	Location Map	2
Figure 2	-	Topographic Map	3
Figure 3	-	Claim Map	5
Figure 4	-	Regional Geology	7
Figure 5	-	Sketch Geology Map	8
Figure 6	-	Geology Map of the Murray Group (including List 7 & 8)	Pocket

Appendices:

Appendix "A"	Statement of Costs
Appendix "B"	Statement of Qualifications

LIST 7 AND 8:**SUMMARY:**

This report summarizes the 1998-99 work program done on 2-post claims List 7 and 8 of the Murray Group during the period July 30, 1998 to May 8, 1999. The boundaries are adjacent and form a common boundary between their initial and final posts. The claim units are owned by myself (W.E. (Bill) Poole), and are located in the Cariboo Mining District, NTS map sheet 93G 3W at 53° 14' N - 123° 26' W. The claims are located approximately 95 km north west of Quesnel and are accessed via the Blackwater and 1100 Road systems.

Exploration consisted of geological mapping and soil geochemistry. The soil geochemical portion of the 1998-99 work program will be documented in a separate report.

Geological mapping focused on mapping the northern boundary of a granitic intrusion and its relationship with other known rock units.

Total expenditures for the year for which assessment has been applied is \$2,350.00.

LOCATION AND ACCESS:

The claims are located approximately 95 km north west of Quesnel in the south central Interior. The area is accessed via all weather Blackwater and 1100 Road systems for 92.5 km, then approximately 4 km on 11M forest development road.

PHYSIOGRAPHY, VEGETATION AND CLIMATE:

The properties are situated regionally on the Fraser Plateau of the Interior Plateau physiographic area. Both units have a slope range between 15% - 60% with a northerly aspect. A north west trending creek gully divides the north east corner of List 8. The topography of both units is generally subdued and drift covered. Portions of the south boundaries follow a slope break comprised of granitic colluvium. The north east corner of List 8 has occasional granitic outcrop. Glacial fluvial outwash forms a wide swath along the creek margin of both claims.

The forest cover consists of a mixed stand of mature pine, fir and spruce. A small logging cut block has been located over a portion of the north east corner of List 8 to address an outbreak of Pine beetle.

The climate is typical of the central Interior, with warm summers and moderately cold winters. Temperature extremes are from 30° C in summer to -40° C in winter. Annual precipitation is approximately 45 centimeters.

W.E. (BILL) POOLE

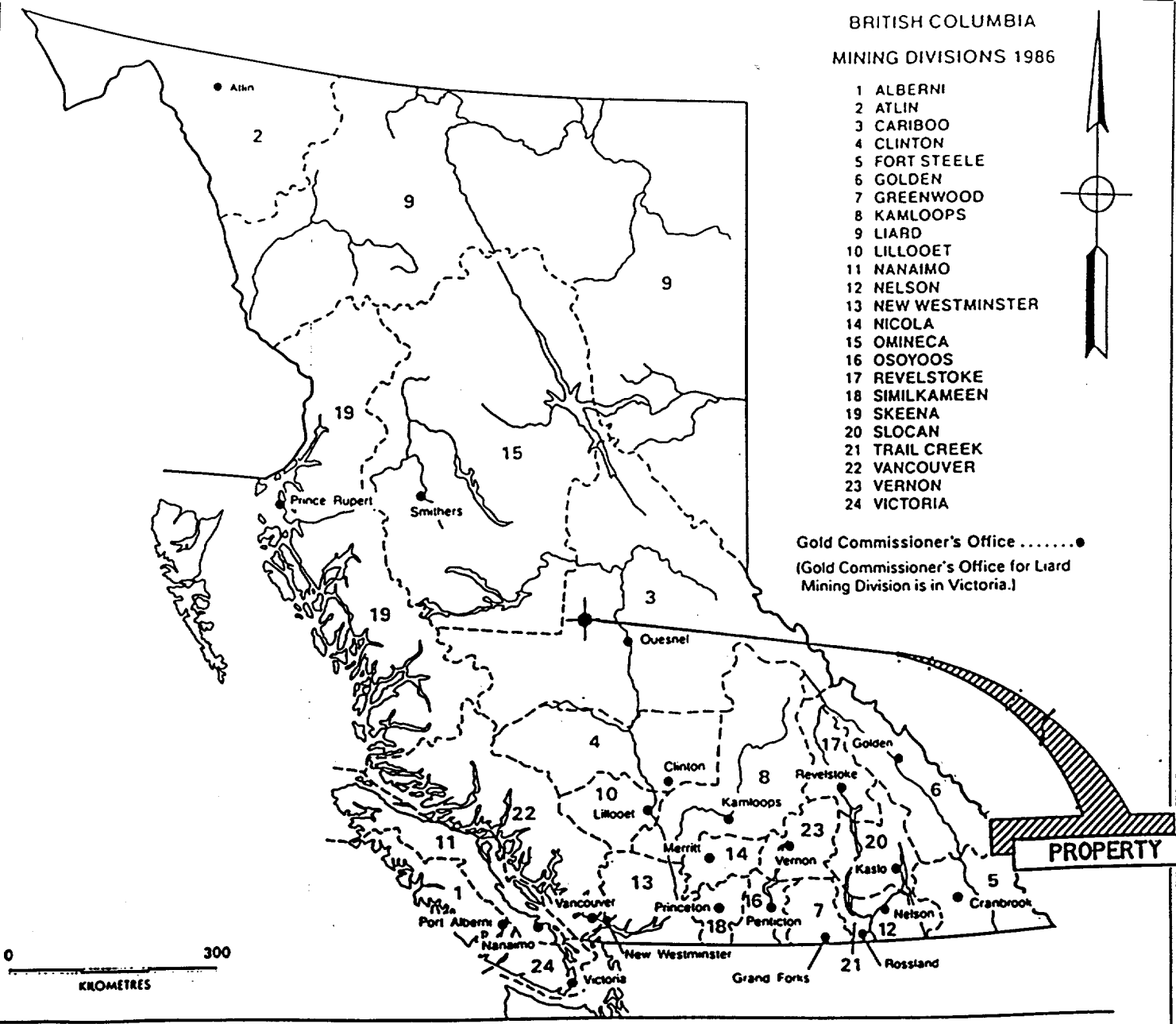
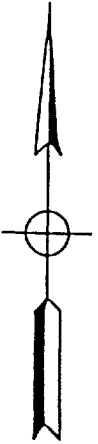
MURRAY GROUP
CARIBOO MINING DIVISION
BRITISH COLUMBIA

LOCATION MAP

BRITISH COLUMBIA MINING DIVISIONS 1986

- 1 ALBERNI
- 2 ATLIN
- 3 CARIBOO
- 4 CLINTON
- 5 FORT STEELE
- 6 GOLDEN
- 7 GREENWOOD
- 8 KAMLOOPS
- 9 LIARD
- 10 LILLOOET
- 11 NANAIMO
- 12 NELSON
- 13 NEW WESTMINSTER
- 14 NICOLA
- 15 Omineca
- 16 OSOYOOS
- 17 REVELSTOKE
- 18 SIMILKAMEEN
- 19 SKEENA
- 20 SLOCAN
- 21 TRAIL CREEK
- 22 VANCOUVER
- 23 VERNON
- 24 VICTORIA

Gold Commissioner's Office ●
(Gold Commissioner's Office for Liard
Mining Division is in Victoria.)



Mining divisions.

FIGURE 1

W.E. (BILL) POOLE
MURRAY GROUP
CARIBOO MINING DIVISION
BRITISH COLUMBIA
TOPOGRAPHICAL MAP

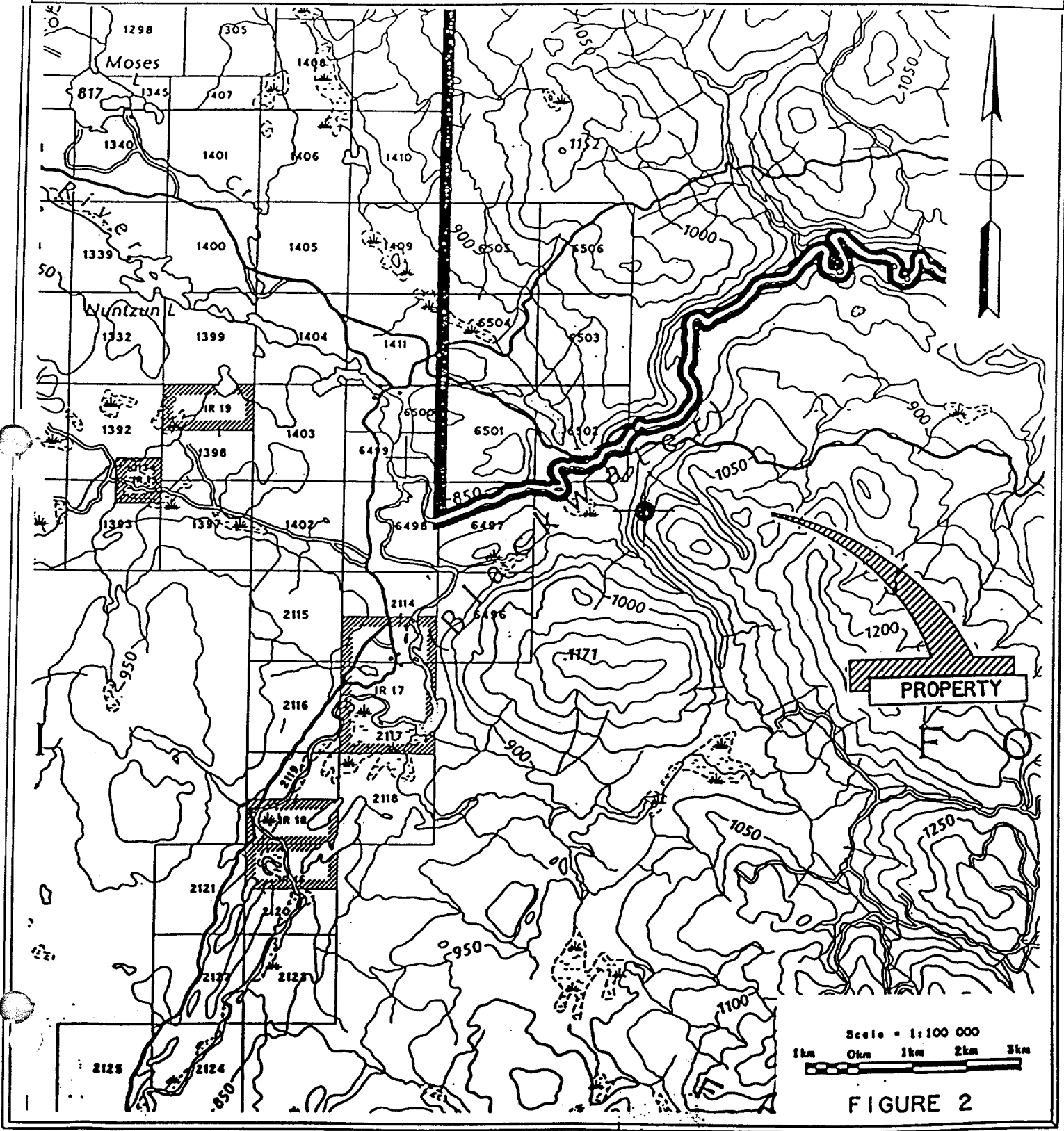


FIGURE 2

CLAIMS:

The claim records as noted in the recording office for the Murray Group are listed as follows:

Claim	Units	Record No.	Expiry Date	Title
List 7	1	363958	July 8, 1999	W.E. (Bill) Poole
List 8	1	363959	July 8, 1999	W.E. (Bill) Poole

Claim posts have been established according to the British Columbia Mineral Act Regulations. Trees are blazed along the line in the direction of travel and the line is also flagged in blue ribbon.

HISTORY AND PREVIOUS WORK:

To my knowledge there has been no previous prospecting report recorded covering any part of the Murray Group of properties other than my own. Rio Tinto Canadian Exploration Limited conducted a geological, geophysical, geochemical survey and drilling program approximately 6 km south of the List 7 and 8 properties. This work has been documented in an annual report by the B.C. Ministry of Mines 1968.

REGIONAL GEOLOGY:

The properties are located within the Cache Creek oceanic volcanic suite near the eastern boundary of Stikinia. The Cache Creek oceanic terrain consists of disrupted ophiolitic and composite volcanic arc-marine assemblages intruded by granitic intrusions

Government mapping indicates the area is dominated by Mississippian to Triassic age rocks that are comprised of ribbon cherts, black argillites, limestone and greenstone. Plutonic rocks of similar age noted in the immediate area are the Trembleur Intrusions? which consist of peridotite, dunite, pyroxenite and serpentinite, and also the Tokamkane Batholith? which is comprised of granodiorite, quartz diorite, and quartz monzonite.

PROPERTY GEOLOGY:

Rock outcrop is limited to a small exposure of granodiorite in the north east corner of List 8. However, I estimate that this rock unit probably underlies the entire area of both claims.

W.E. (BILL) POOLE
MURRAY GROUP
CARIBOO MINING DIVISION
BRITISH COLUMBIA
CLAIM MAP

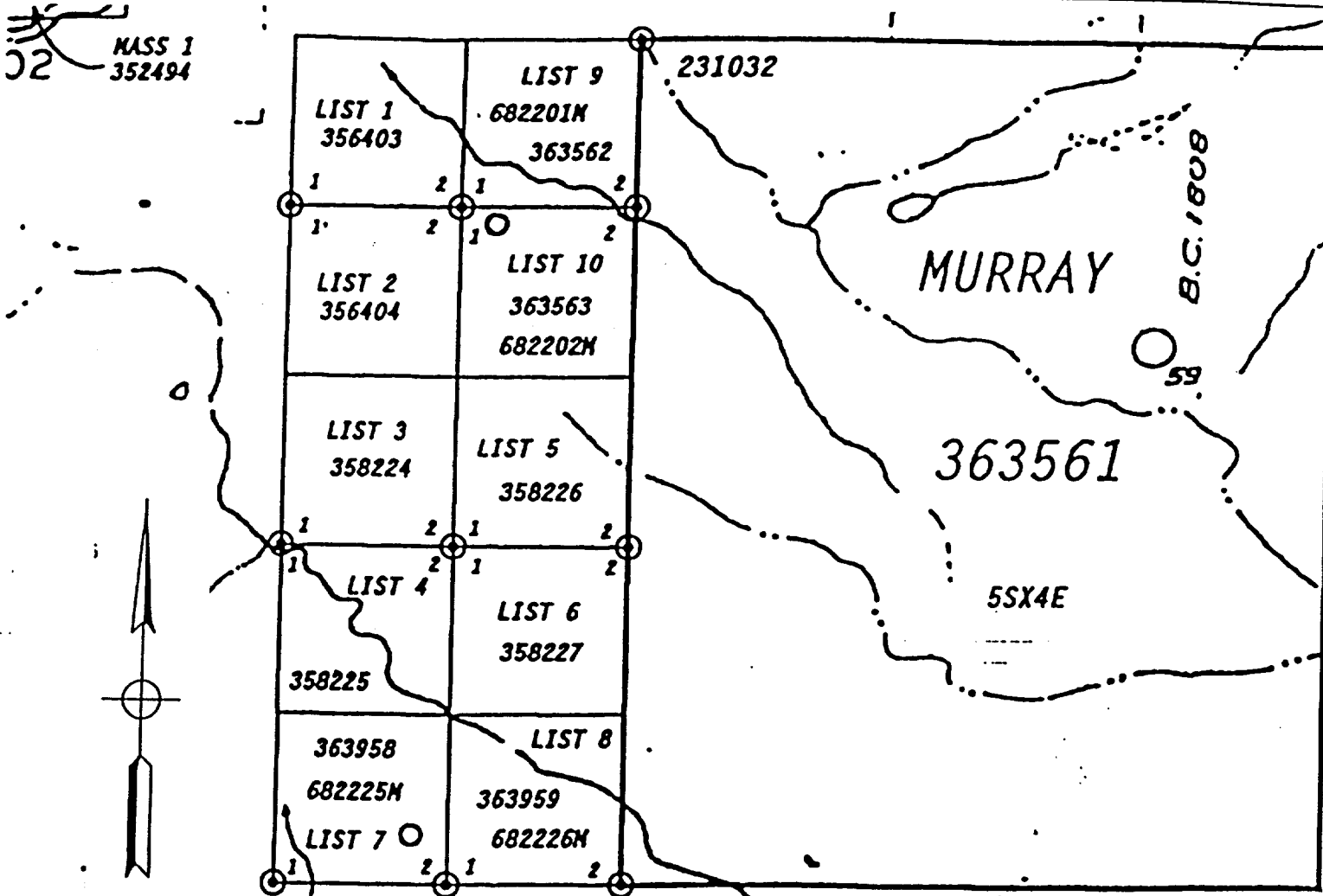


FIGURE 3

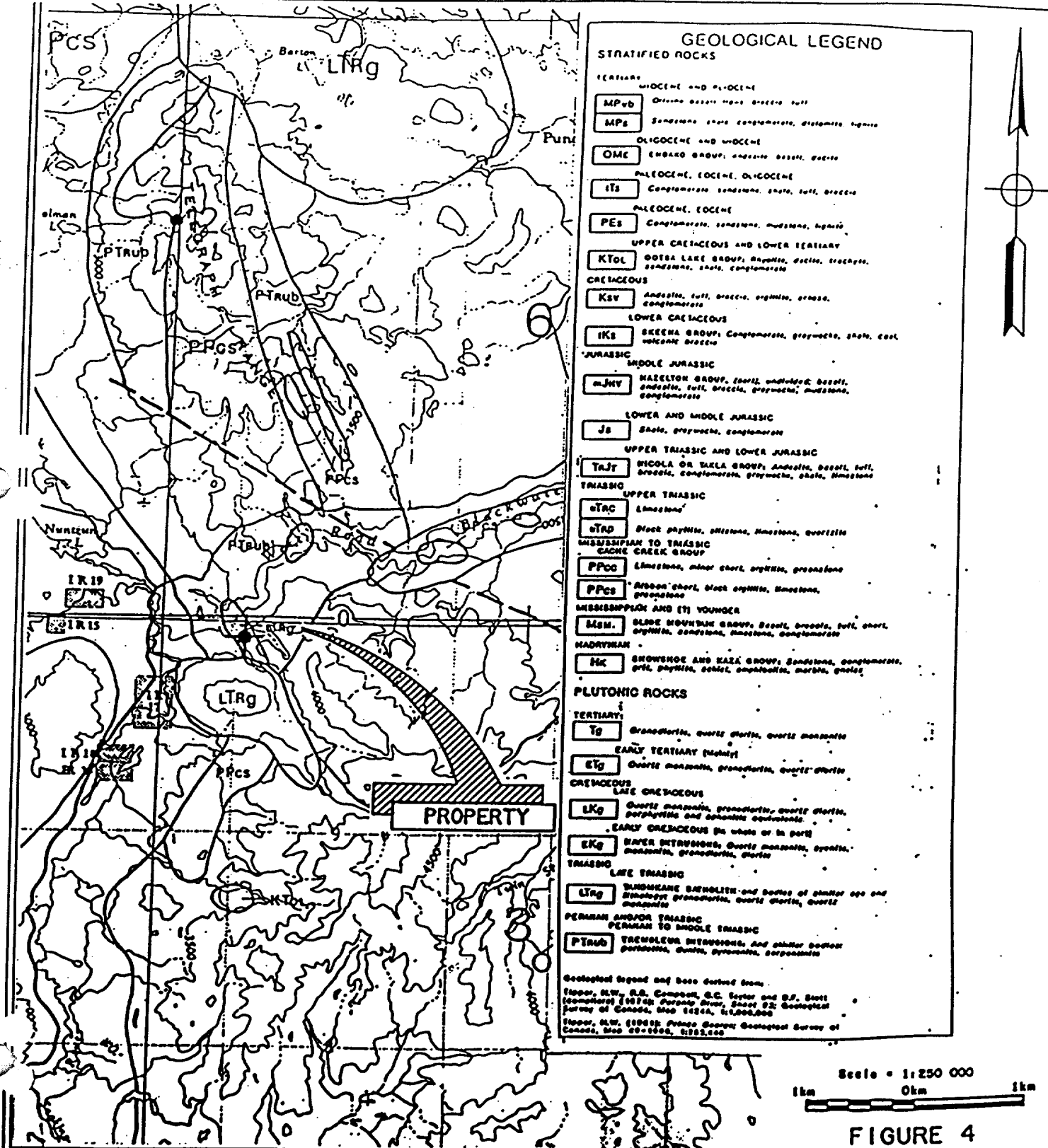
MINERALIZATION AND ALTERATION:

No mineralization or significant alteration has been found in rock outcrop or drift cover. A soil geochemical line transecting the eastern portion of List 8 failed to identify any important anomalies. The results of this survey are summarized in a separate geochemical report. Measured pH from the stream in the north east corner of List 8 registered pH values between 6.7 and 7.8. One silt sample upstream from a road culvert listed no significant mineralization.

EXPLORATION POTENTIAL:

The geological environment of the List claims north of List 7 and 8 contain elements of intrusive related fault/shear controlled gold bearing veins and possibly gold associated with listwanite mineralogical assemblages. It is postulated that List 7 and 8 may have potential for intrusive related fault/shear mineralization. However, with the absence of (or very limited) bedrock exposure, the potential for mineralization in this area is difficult to assess. Further work is not recommended at this time.

W.E. (BILL) POOLE
 MURRAY GROUP
 CARIBOO MINING DIVISION
 BRITISH COLUMBIA
 REGIONAL GEOLOGY MAP



GEOLOGICAL LEGEND

STRATIFIED ROCKS

TERTIARY

MIOCENE AND PLEISTOCENE

MPvb Omineca Basin, Missoula Group, tuff

MPs Sandstone, shale, conglomerate, diatomite, lignite

OLIGOCENE AND MIOCENE

OME Embarras Group, andesite, basalt, gneiss

MLEDCENE, EOCENE, OLI-GOCENE

ITS Cretaceous sandstone, shale, tuff, breccia

MLEDCENE, EOCENE

PEs Conglomerate, sandstone, mudstone, lignite

UPPER CRETACEOUS AND LOWER TERTIARY

KTol Ootsa Lake Group, andesite, diorite, trachyte, sandstone, shale, conglomerate

CRETACEOUS

Ksv Andesite, tuff, breccia, argillite, shales, conglomerate

LOWER CRETACEOUS

IKs Skeena Group, Conglomerate, graywacke, shale, coal, volcanic breccia

JURASSIC

MIDDLE JURASSIC

mJuv Hazelton Group, (shale, sandstone, basalt, andesite, tuff, breccia, graywacke, mudstone, conglomerate)

LOWER AND MIDDLE JURASSIC

Js Shale, graywacke, conglomerate

UPPER TRIASSIC AND LOWER JURASSIC

Tajr Nicola or Bella Group, Andesite, basalt, tuff, breccia, conglomerate, graywacke, shale, limestone

TRIASSIC

UPPER TRIASSIC

uTrc Limestone

uTro Most phyllite, silstone, limestone, quartzite

MISSISSIPPIAN TO TRIASSIC

CACHE CREEK GROUP

PPcg Limestone, minor chert, argillite, greenstone

PPcs Ribbon chert, black argillite, limestone, greenstone

MISSISSIPPIAN AND (?) YOUNGER

MSM Blue Mountain Group, basalt, breccia, tuff, chert, argillite, sandstone, limestone, conglomerate

MADRYSIAN

Mk Snowshoe and Kalka Group, sandstone, conglomerate, argillite, phyllite, schist, amphibolite, marble, gneiss

PLUTONIC ROCKS

TERTIARY

Tg Granodiorite, quartz diorite, quartz monzonite

EARLY TERTIARY (likely)

ETg Quartz monzonite, granodiorite, quartz diorite

CRETACEOUS

LATE CRETACEOUS

LKg Quartz monzonite, granodiorite, quartz diorite, porphyritic and schistose equivalents

EARLY CRETACEOUS (in whole or in part)

EKg Bayer intrusions, quartz monzonite, syenite, monzonite, granodiorite, diorite

TRIASSIC

LATE TRIASSIC

LTrg Burdwanne batholith and bodies of similar age and lithology, granodiorite, quartz diorite, quartz

PERMAN AND/OR TRIASSIC

PERMAN TO MIDDLE TRIASSIC

PTRub Trencholera intrusions, and similar bodies, porphyritic, quartz, syenite, gabbro, gneiss

Geological legend and base derived from:
 Hooper, H.W., R.B. Campbell, G.C. Taylor and S.J. Scott
 (compilers) 1974, Pursony River, Sheet 62, Geological
 Survey of Canada, Map 1424A, 1:1,000,000
 Hooper, H.W. (1968), Prince George, Geological Survey of
 Canada, Map 60-1550, 1:250,000

Scale = 1:250 000
 1km 0km 1km

FIGURE 4

APPENDIX "A"

STATEMENT OF COSTS

Summary of Prospecting Activities:

Prospecting 1998:

Date	No. of Days
August 3, 4, 5	3

Prospecting 1999:

May 5, 6, 7	3
-------------	---

Total Prospecting Days: 6 days @ \$300/day = \$ 1,800.00

Report 550.00

Total Expenditures: \$ 2,350.00

Prepared by:



W.E. (Bill) Poole

APPENDIX "B"

Statement of Qualifications:

I am an experienced amateur prospector and holder of a Free Miner's Certificate, Client Number 121680. I have attended numerous short courses and try to keep current with the latest developments by reading publications or attending conferences. I have staked numerous claims and have filed both physical and geological reports. I was the recipient of a 1998 Prospector's grant. The project was successful in identifying a geochemical anomaly of precious minerals (Reference No. 98/99 P4).

I am the author of this report which is based on a study of private and public reports, a field examination with Ministry geologists and my own personal examination of the property on more than six separate occasions from July 30, 1998 to May 8, 1999. I am confident this report is descriptively accurate and consent to its publication in a Statement of Material Facts.

Prepared by:



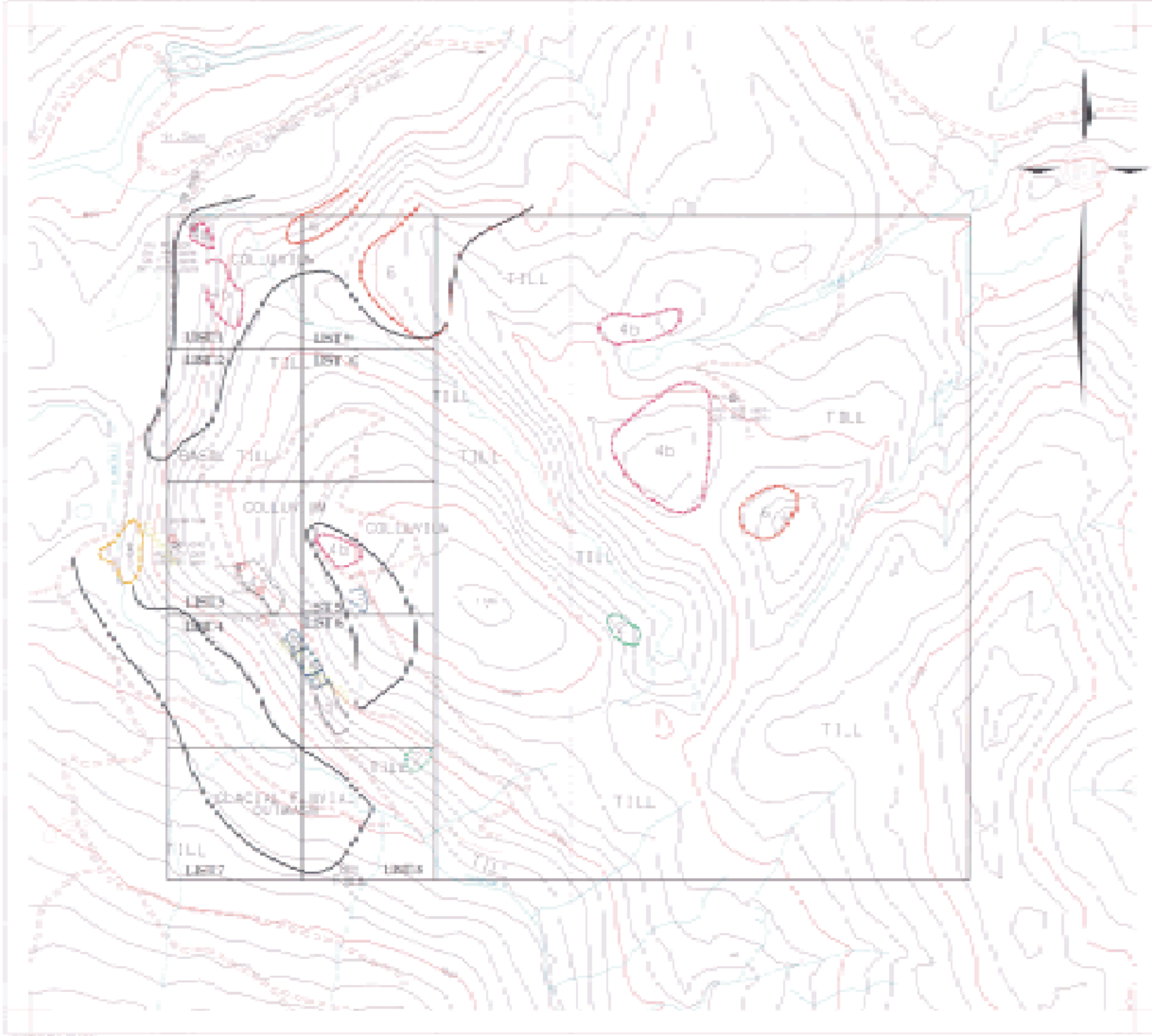
W.E. (Bill) Poole

file: Geo-L7&8

FIGURE 6
GEOLOGY MAP
OF THE MURRAY GROUP

25.911

W.E. (BILL) POOLE
MURRAY GROUP PROPERTY
QUESNEL AREA, B.C.



NSD 901

3-C-6-2 MAP 530 821-024	
DATE	2008
COORDINATE	50° 14' 18" 101° 25' 12"
N.T.S. NO.	NSD 901 001

- LITHOLOGIES**
- INTRUSIVE ROCK**
- DIABASE
 - GRANODIORITE (GROTTIC ALTBEE)
 - GRANITE
- ULTRAMAFIC ROCKS (HARZBURGITE)**
- SCORPAGITE
 - FRACTURES AND QUARTZ FLOODES
 - MINOR CARBONATIZATION
 - T.L.C. ALTBEES
- SEDIMENTARY AND VOLCANIC ROCKS**
- SANDSTONE - HORNfels AND GRAIN ALTERED TO SPALATED WITH SCORPAGITE AND INFLUENCED BY NUMEROUS BASIC DYKES
 - MAFIC/LACCOLLS, SIBBEN'S - ACILLITES, S. STONE/LANDTINE

- LEGEND**
- Close Boundary: —
 - Fault: —
 - Coll. Forest Interdig: —
 - Rock Outcrop: ○
 - Mineral Occurrence: ●
 - Rock Sample Locations (With Sample Number): ○
 - Road (MCP dem): —
 - Bridge: —
 - Contour (1m/10m Interval): —

0 10 20 30 40 50
SCALE
1:5000
1 CM=50M

DATE DRAWN: 02.11.2008 DATE REVISED:
 FILE: PG-4 02080-09
 DRAWN BY: STEVE BROWN