

Rimfire Minerals Corporation
**2000 GEOLOGICAL, GEOCHEMICAL
AND GEOPHYSICAL REPORT
ON THE THORN PROPERTY**

Volume II - Figures

Located in the Sutlahine River Area
Atlin Mining Division
NTS 104K/10W
58° 32' North Latitude
132° 47' West Longitude

-prepared for-
RIMFIRE MINERALS CORPORATION
Suite 700, 700 West Pender Street
Vancouver, British Columbia, Canada
V6C 1G8

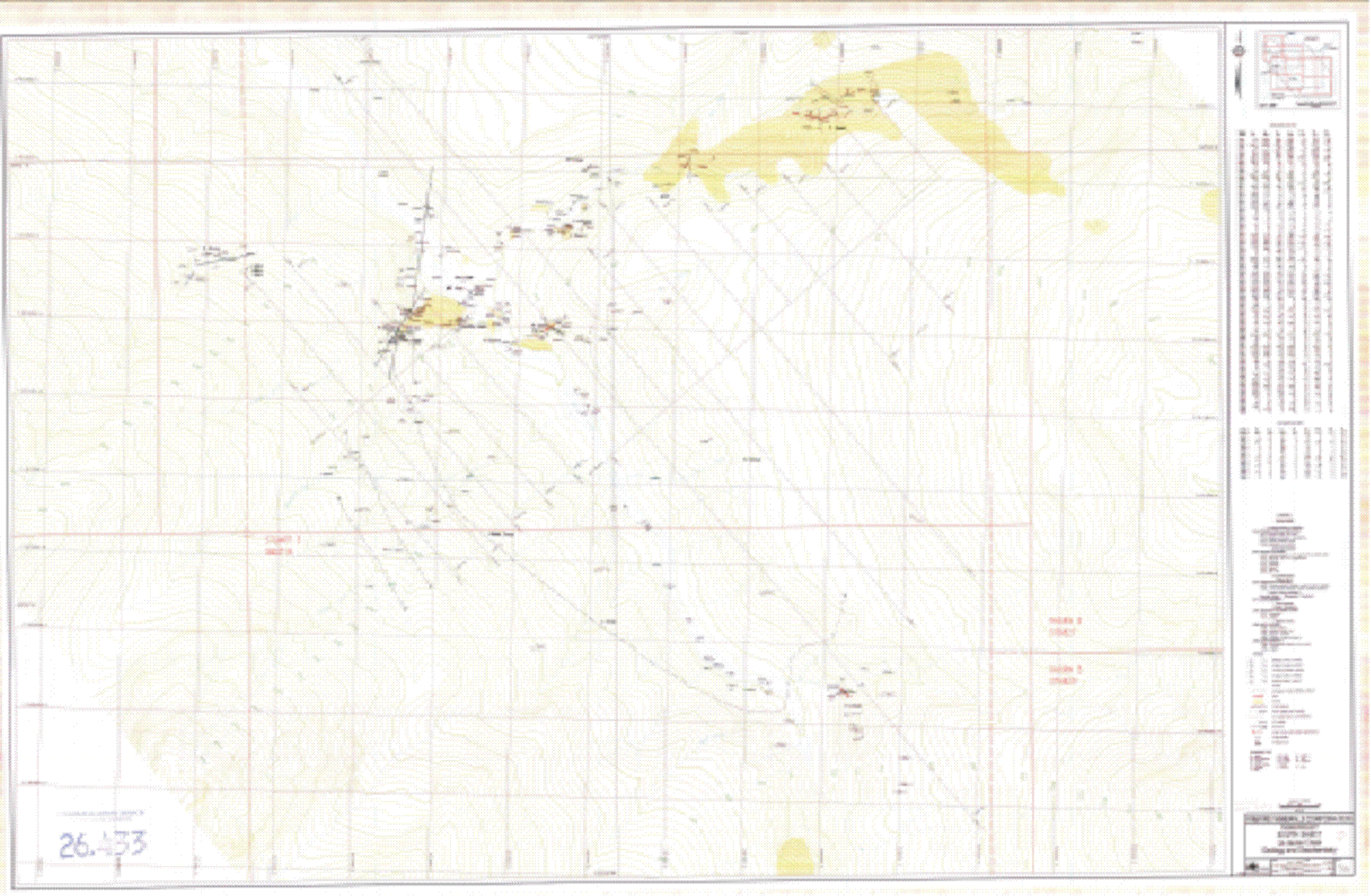
-prepared by-
Henry J. Awmack, P.Eng.
EQUITY ENGINEERING LTD.
Suite 700, 700 West Pender Street
Vancouver, British Columbia, Canada
V6C 1G8
henrya@equityeng.bc.ca
www.equityengineering.com

GEOLOGICAL SURVEY BRANCH
SCIENTIFIC REPORT

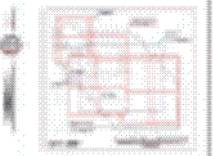
November 2000

26,433

pt. 2 of 2



26.433



Scale: 1:50,000
Projection: UTM
Datum: WGS 84
Elevation: Contour interval 20m
Contour lines: Brown
Spot heights: Black
Water: Blue
Vegetation: Green
Buildings: Black
Roads: Red
Railways: Black
Power lines: Black
Telephone lines: Black
Fences: Black
Boundaries: Black
Administrative boundaries: Black
Municipal boundaries: Black
Cadastral boundaries: Black
Other boundaries: Black
Other features: Black

Legend

Scale bar: 0 100 200 300 400 500 meters

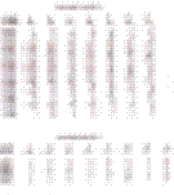
North arrow

Legend

- Contour lines: Brown
- Spot heights: Black
- Water: Blue
- Vegetation: Green
- Buildings: Black
- Roads: Red
- Railways: Black
- Power lines: Black
- Telephone lines: Black
- Fences: Black
- Boundaries: Black
- Administrative boundaries: Black
- Municipal boundaries: Black
- Cadastral boundaries: Black
- Other boundaries: Black
- Other features: Black

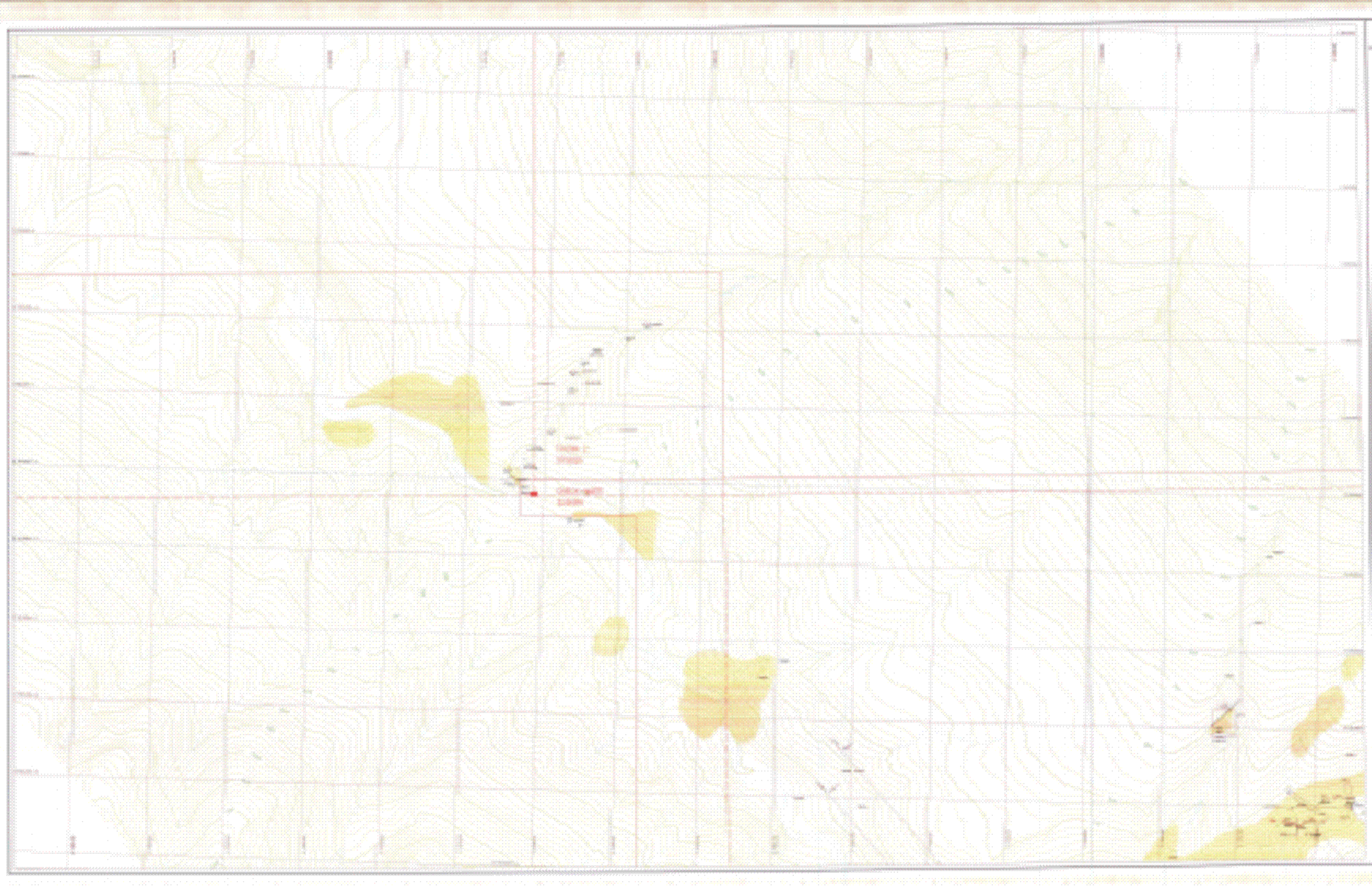


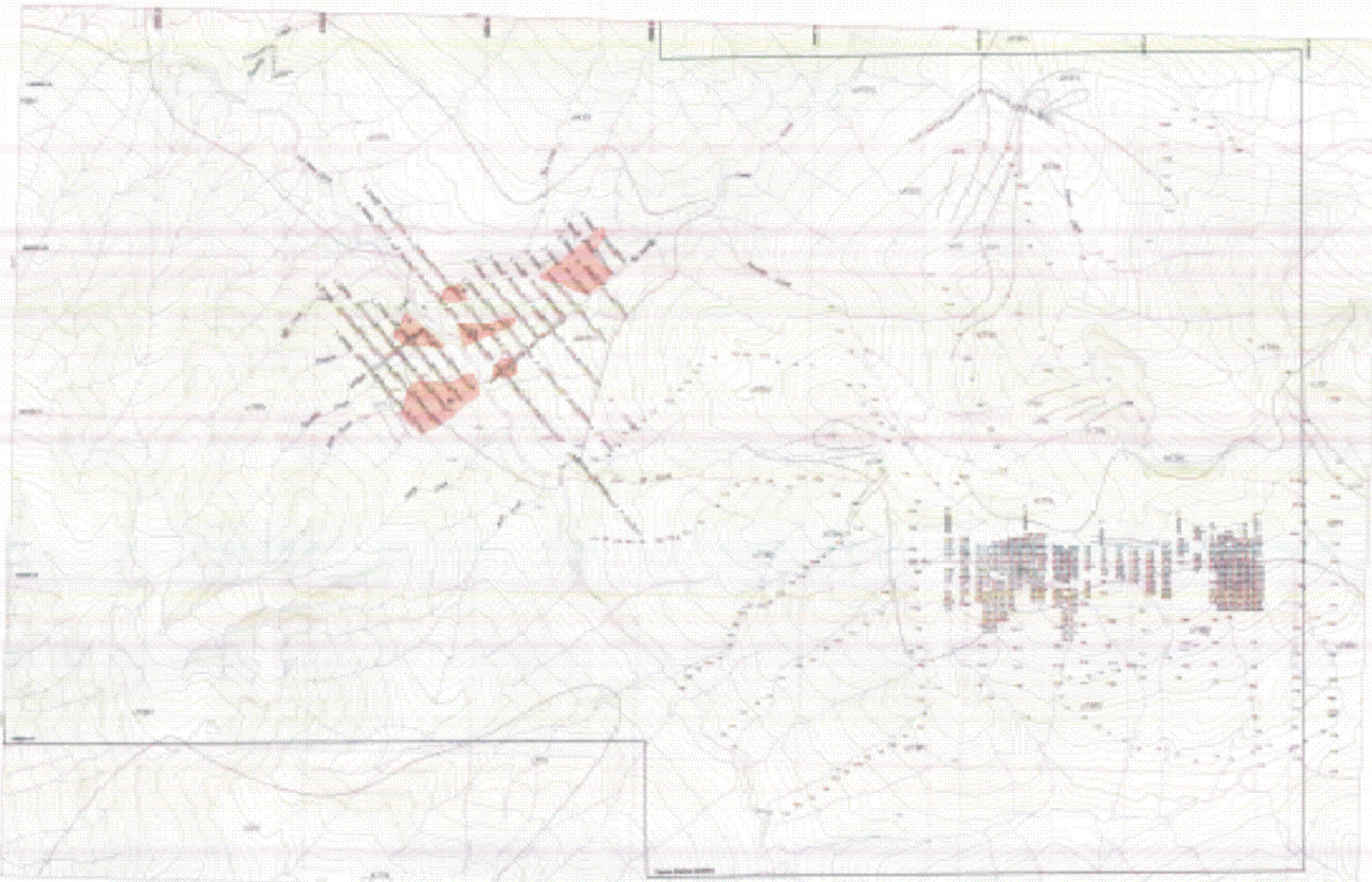
26.433



- Legend entries with symbols and text, including symbols for roads, buildings, and vegetation.

Map title and publication information, including the name of the organization and the date.





PROSPECT AREA
PROSPECT ID

26.433

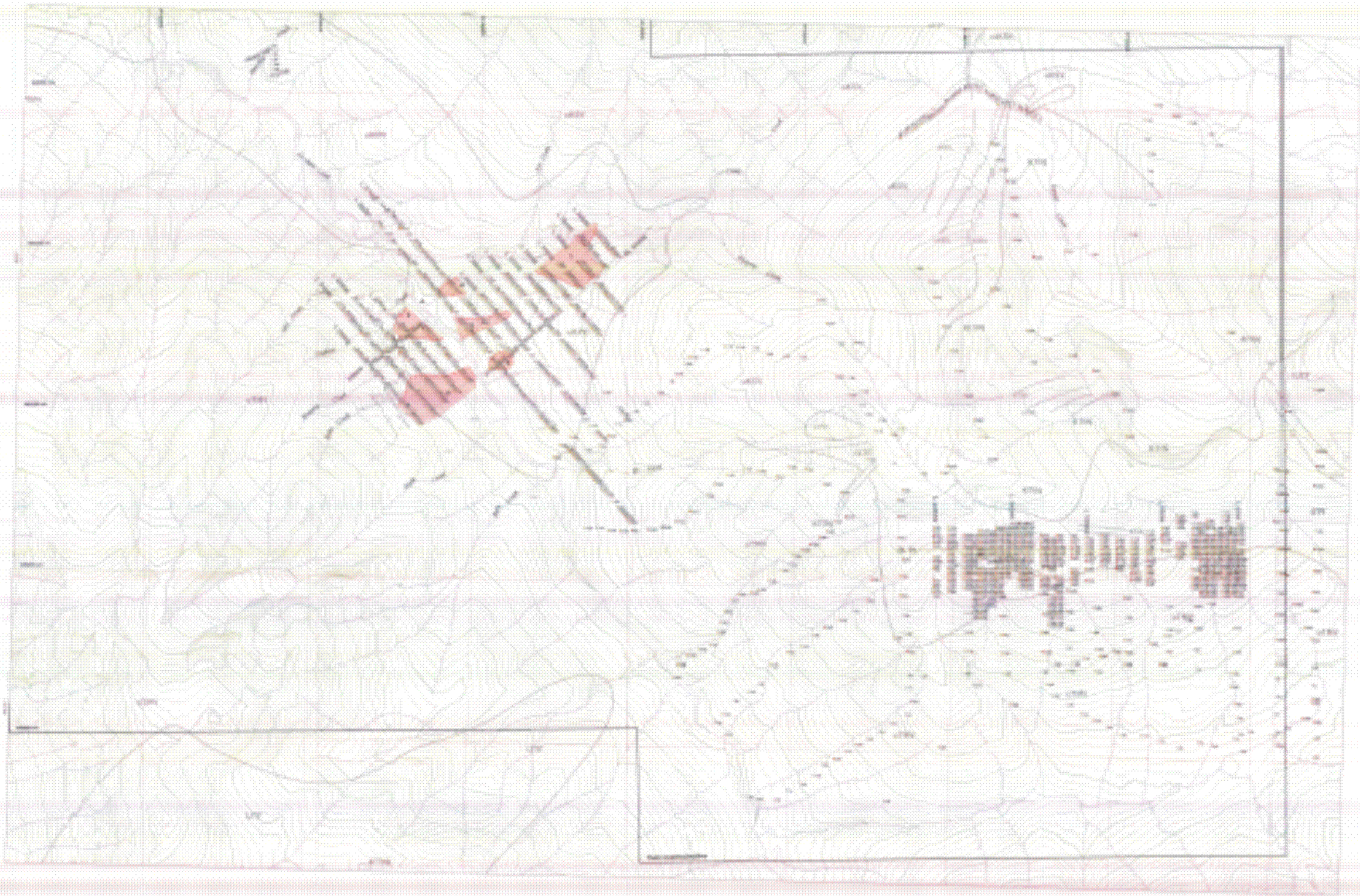
- PROSPECT AREA
- PROSPECT ID
- PROSPECT NAME
- PROSPECT TYPE
- PROSPECT STATUS
- PROSPECT COORDINATES
- PROSPECT ELEVATION
- PROSPECT AREA
- PROSPECT ID
- PROSPECT NAME
- PROSPECT TYPE
- PROSPECT STATUS
- PROSPECT COORDINATES
- PROSPECT ELEVATION



PROSPECT AREA
PROSPECT ID



MINING MINERALS CORPORATION
 TECHNICAL
 1:50,000
 1:50,000
 1:50,000



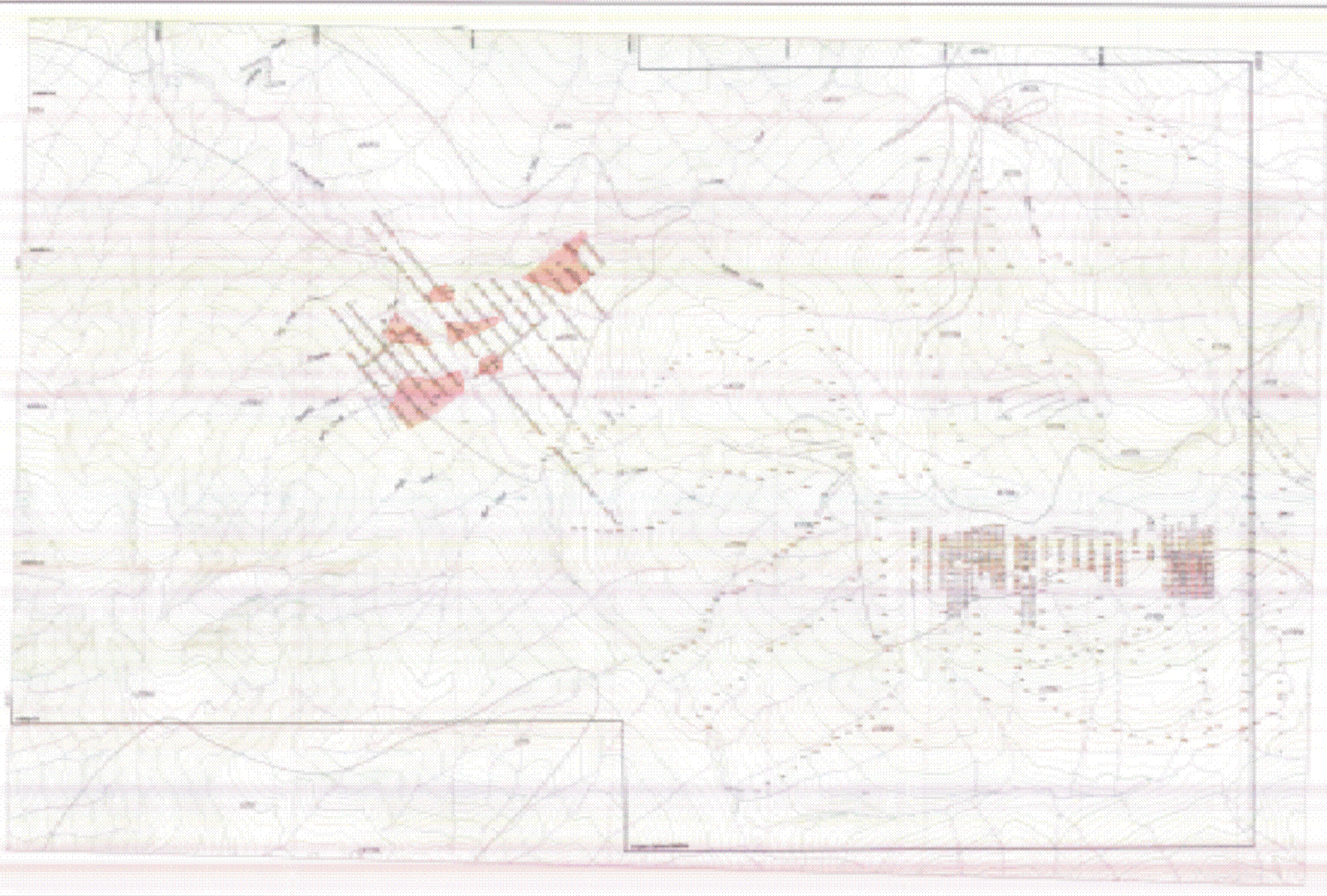
26,433

26,433

- Legend
- Topographic Contours
- Water Features
- Infrastructure
- Administrative Boundaries
- Other Features

- Scale
- North Arrow
- Grid

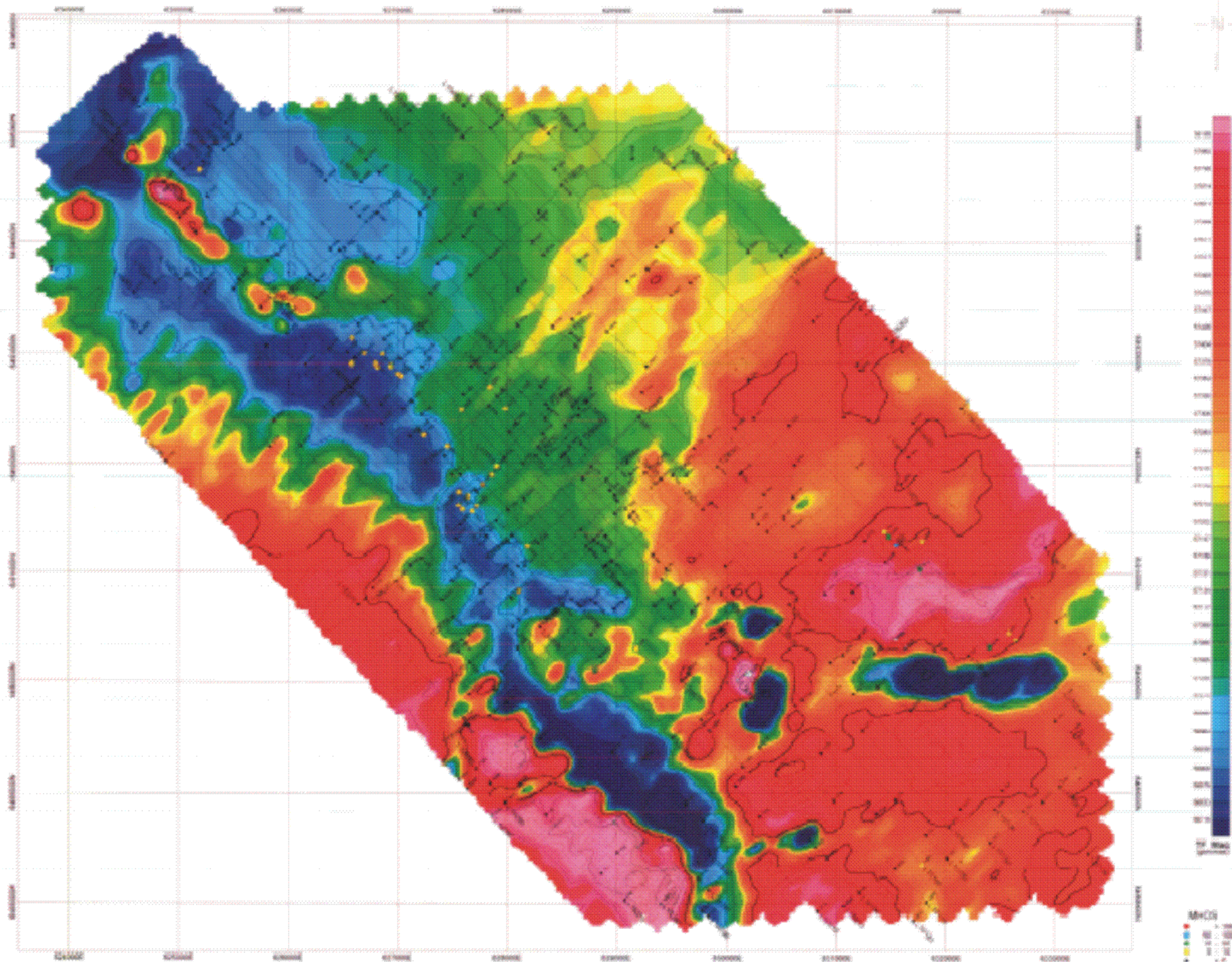
KIMPE MINERALS CORPORATION
 TITLE: 26,433
 AREA: 26,433



26.433

26.433

- Legend for symbols and colors used on the map.
- Scale bar.



CEDICORPAL SURVEY BRANCH
 7/2008 REPORT

26,433

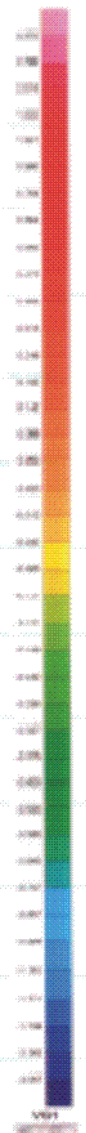
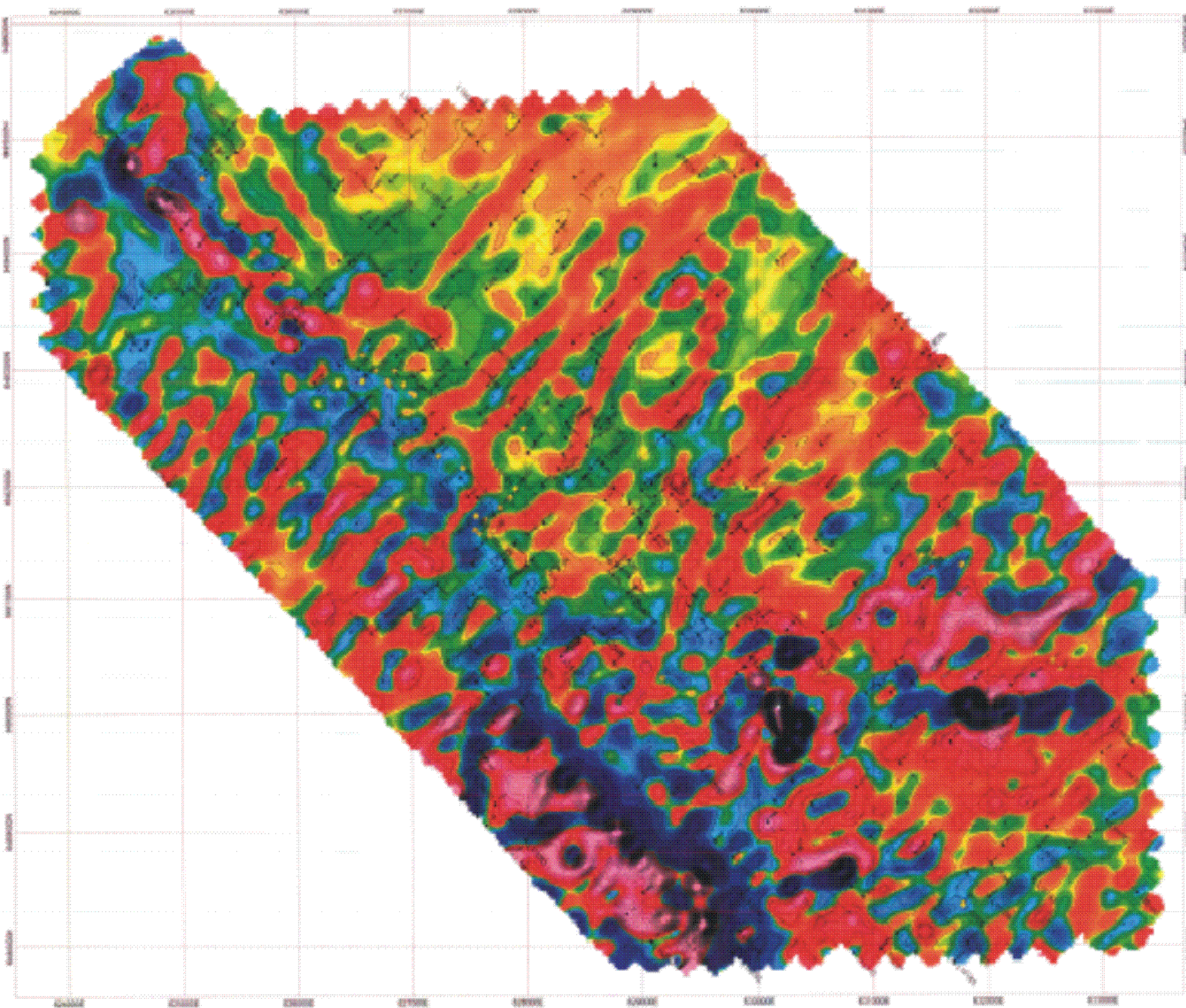
Scale 1:20,000

Contour Intervals: 100, 500 & 2500 gamma

RIMFIRE MINERALS CORPORATION
 THERM PROJECT
 Total Field Magnetic

Map No.	Scale	1:20,000
Date	7/2008	
Author	Equity Engineering Ltd.	
Client	Rimfire Minerals Corporation	

Equity Engineering Ltd. / v02a Image Limited



MPOS
 1 1.00
 2 0.50
 3 0.25
 4 0.10

GEOLOGICAL SURVEY OF CANADA
 1250 REXDALE AVENUE
 OTTAWA, ONTARIO K1H 8S9

26,433

Scale 1:2000

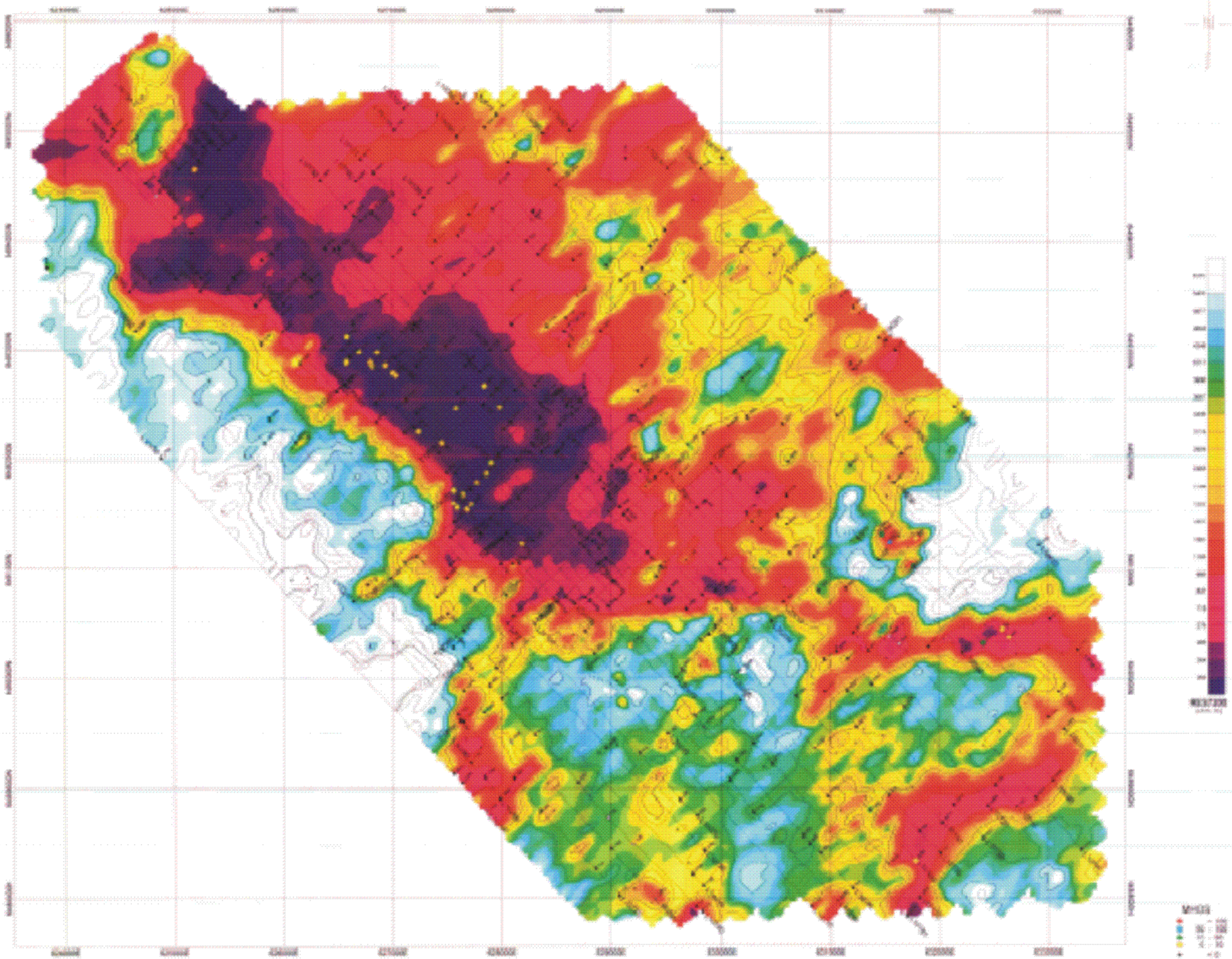


Contour Interval: 0.2 & 1.0 gamma/m

RIMFIRE MINERALS CORPORATION
 THECOP PROJECT
 Magnetics - First Vertical Derivative

Map No. 26,433
 Date: 2011
 Scale: 1:2000
 Project: THECOP PROJECT
 Client: RIMFIRE MINERALS CORPORATION
 Prepared by: EQUITY ENGINEERING LTD. / IVOX IMAGE LIMITED

9b



GEOLOGICAL SURVEY BRANCH
 ANCHORAGE, ALASKA

26,433

Scale 1:20000

Contour Intervals: 1000 & 2500 ohm-m

MSSD
 100
 50
 25
 10
 5
 0

2013-07-17
KIMPE MINERALS CORPORATION
 THORN PROJECT
 7200 Hz Apparent Resistivity

Map Scale	1:20,000
Projection	UTM
Units	Meters

Equity Engineering Ltd. / NVE Image Limited