

MINERAL TITLES BRANCH  
Rec'd.  
JUN - 4 2001  
L.I.# \_\_\_\_\_  
File \_\_\_\_\_  
VANCOUVER, B.C.

**ASSESSMENT REPORT**

**on the**

**APLITE PROPERTY  
APLITE 1 - 8 MINERAL CLAIMS**

**Ahdatay Lake Area  
Omineca Mining Division, B.C.**

NTS: 093N/07W  
Latitude: 55°19'52"N  
Longitude: 124°52'46"W  
Owner: W.R. Gilmour  
Operator: Discovery Consultants  
Author: T.H. Carpenter, P.Geo.  
Date: March 1, 2001

**GEOLOGICAL SURVEY BRANCH  
ASSESSMENT REPORT**

**26,555**

## TABLE OF CONTENTS

SUMMARY .....	Page 1
LOCATION AND ACCESS .....	Page 2
TOPOGRAPHY AND VEGETATION .....	Page 2
PROPERTY .....	Page 3
HISTORY .....	Page 4
REGIONAL GEOLOGY .....	Page 5
PROPERTY GEOLOGY .....	Page 6
WORK COMPLETED .....	Page 7
Survey Parameters .....	Page 7
Survey Results .....	Page 7
CONCLUSIONS AND RECOMMENDATIONS .....	Page 9
BIBLIOGRAPHY .....	Page 10
STATEMENT OF COSTS .....	Page 11
STATEMENT OF QUALIFICATIONS .....	Page 12

## LIST OF ILLUSTRATIONS

Figure 1	Location Map	Following Page 2
Figure 2	Claim Map	Following Page 3
Figure 3	Magnetometer values and grid location - 1:5000	In Pocket
Figure 4	Magnetometer survey – 1:2500	In Pocket

## SUMMARY

The Aplite property was the focus of exploration programs in 1983 and 1990 by BP Resources. Mineralization comprises alkalic porphyry Cu and Au.

The occurrence is located 115 kilometres north of Fort St. James. Exploration in 1983 consisted of soil sampling that yielded copper and gold anomalies associated with structural zones on the property. Rock samples contained up to 9,450 ppb Au and 6,600 ppm Cu.

In 1990 a drill hole intersection on the property contained 6.4 grams per tonne gold and 0.098% copper over 6 metres. This mineralization was associated with an IP anomaly and a strong airborne magnetic anomaly extending to the north-northwest from the area of drilling mineralization for two km.

In 2000 a ground magnetometer survey was carried out on the property over the Aplite 4 claim and a portion of the Aplite 2 claim.

## **LOCATION AND ACCESS**

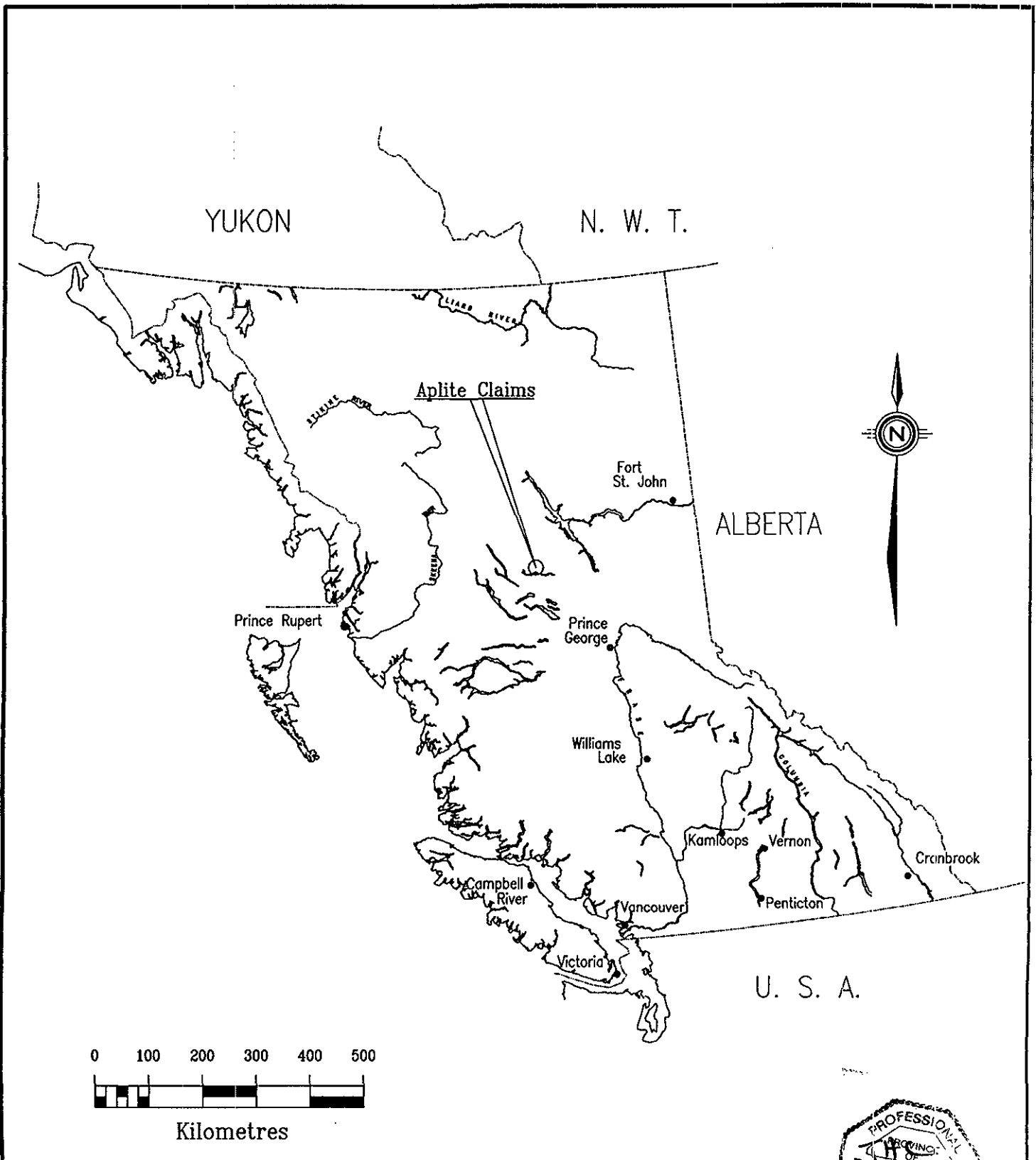
The Aplite claim group is located 115 km north of Fort St. James, B.C. and 4.5 km east of Ahdalay Lake (Figure 1). The claims are centred at latitude 55°19'52"N and longitude 124°52'46"W on NTS map 93N/07W.

Access to the claims is by helicopter from logging roads to the south, on the north side of Church lake, a distance of approximately 20 km.

## **TOPOGRAPHY and VEGETATION**

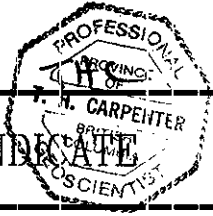
Elevations in the claim area range between 1150 and 1400 metres above sea level. Topography is gentle to moderate. The claims are located on the southeastern slope of a well rounded hill.

Vegetation is mixed and comprises jackpine in areas of good drainage. Spruce and balsam occur in wetter areas. Underbrush ranges from none to dense willow and alder thickets.



**DISCOVERY** Consultants

PEREGRINE SYNDICATE



Aplite Creek Property

LOCATION MAP

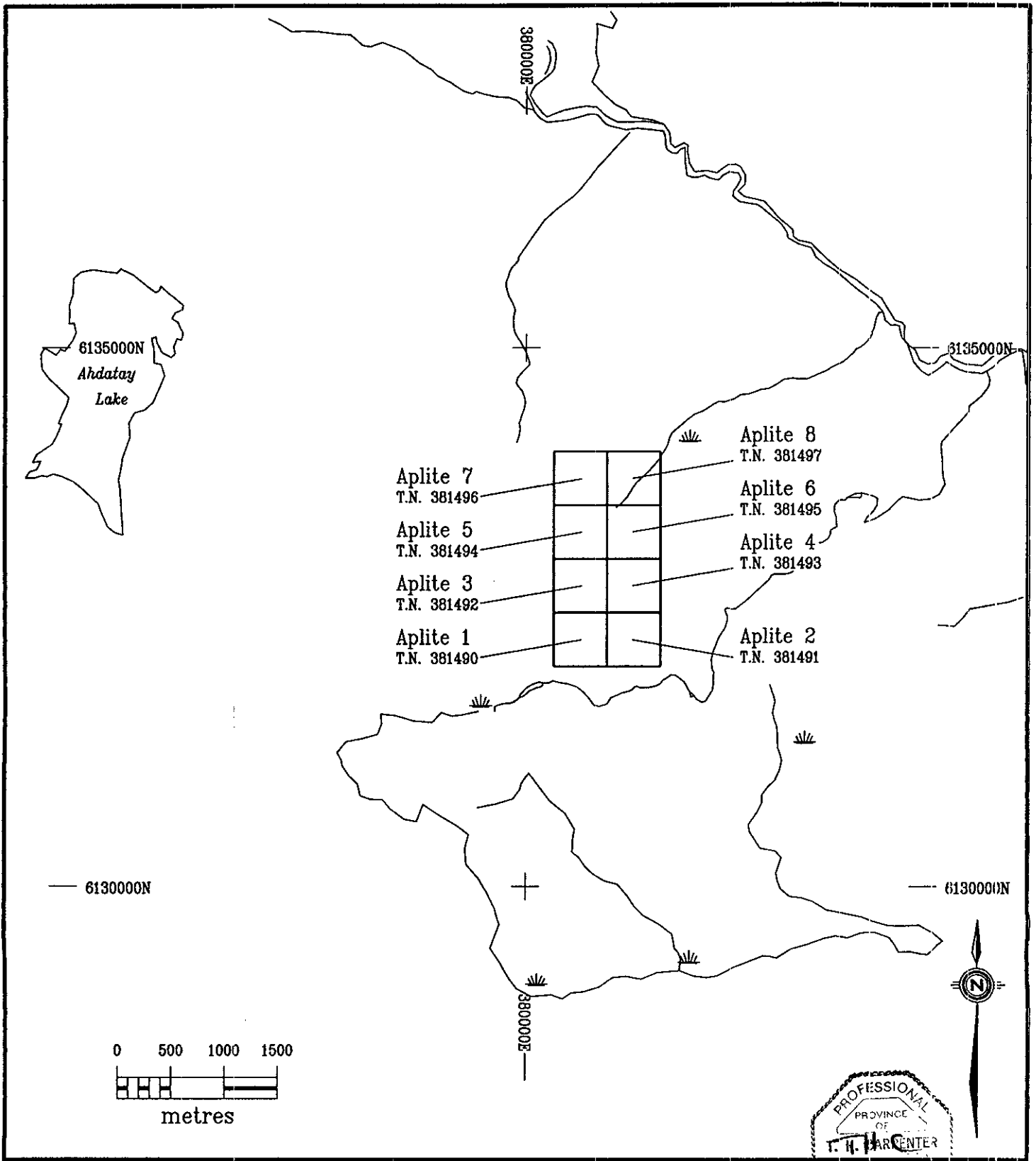
## PROPERTY

The Aplite property (Figure 2) comprises two post claims designated the Aplite 1 to Aplite 8, located by Richard George Mitchell on October 3, 2000 and recorded in Vernon, B.C. on October 23, 2000.

<u>Claim Name</u>	<u>Record No.</u>	<u>Owner of Record</u>	<u>Anniversary Date</u> *
Aplite 1	381490	William R. Gilmour	October 3, 2005
Aplite 2	381491	William R. Gilmour	October 3, 2005
Aplite 3	381492	William R. Gilmour	October 3, 2005
Aplite 4	381493	William R. Gilmour	October 3, 2005
Aplite 5	381494	William R. Gilmour	October 3, 2005
Aplite 6	381495	William R. Gilmour	October 3, 2005
Aplite 7	381496	William R. Gilmour	October 3, 2005
Aplite 8	381497	William R. Gilmour	October 3, 2005

The claims are held by W.R. Gilmour in trust for the Peregrine Syndicate.

\* Pending acceptance of this report.



**DISCOVERY** Consultants

PEREGRINE SYNDICATE

Aplite Creek Property

Claim Location Map

## HISTORY

The area of the claims was mapped in 1949 during reconnaissance mapping by the Geological Survey of Canada.

During the early 1970's work was carried out by the Luc Syndicate, Chalico Silver Mines, Noranda and Pechiney Development. This work, largely comprising geological mapping, soil geochemistry and IP surveys. Pechiney also completed four drill holes to the northwest of the present claims.

In 1983 BP/Selco completed a soil geochemical survey over the claim area. This survey yielded copper and gold anomalies corresponding to deeply incised creeks in the southern part of the area. Weaker copper and gold anomalies occurred to the north of the creeks.

Of forty-one rock samples collected in 1983, 15 samples contained >200 ppm Cu and/or >100 ppb Au. One rock chip sample contained 9,450 ppb Au and 6,600 ppm Cu.

In 1990 BP/Selco carried out a six hole diamond drill program on the property in the south of and to the southeast of the present claims. One of these holes, drilled to test a coincident magnetic/IP anomaly, intersected a mineralized zone containing 6.4 grams per tonne Au and 0.098% Cu over 6 metres, the most anomalous of several mineralized zones in the hole. An adjacent hole contained 10 metres of 0.4 grams per tonne Au and 0.07% Cu.

Further work was recommended but never carried out. BP Canada ceased mineral exploration in 1992.

The property was acquired by the Peregrine Syndicate in 2000.



## REGIONAL GEOLOGY

The Aplite Property is underlain mainly by volcanics of the Upper Triassic Takla Group near the eastern margin of the Triassic-Cretaceous Hogem batholith.

The Takla Group is mainly composed of andesite and basalt tuffs, flows, breccias and coarse volcanoclastic breccias. Many small co-magmatic alkaline stocks intrude the volcanics.

The Hogem Batholith is reported as differing significantly from Upper Triassic batholiths in the Quesnel Trough. The Hogem Batholith was emplaced periodically from the Late Triassic to the Cretaceous, rather than being confined to a short interval near the Triassic-Jurassic boundary. The Hogem Batholith is also composed of four phases that alternated from alkaline to calc-alkaline with each phase becoming increasingly felsic. Other batholiths such as the Guichon and Iron Mast are usually of a single affinity, in these cases calc-alkaline and alkaline respectively.

The region hosts numerous copper, copper-molybdenum and copper-gold prospects including the Lorraine copper deposit and the Mt. Milligan copper-gold deposit.

## **PROPERTY GEOLOGY**

The Aplite property is underlain by Lower Jurassic Churchi Lake Formation of the Takla Group and comprises predominantly augite porphyry latite/andesite flows and fragmental rocks. Dykes ranging in composition from monzonite/monzodiorite to aplitic syenite intrude these rocks.

The intrusive rocks are located along sub-vertical faults with trends of 165° and 070°.

The monzodiorite is strongly magnetic and is interpreted to extend north-northwest across the claim area.

## WORK COMPLETED

Exploration in 2000 consisted of a magnetometer survey over portions of the Aplite 2 and 4 claims to the north and south of auriferous drill holes AH 90-3 and AH 90-4.

### Survey Parameters

The survey was run on east-west lines 50 metres apart with stations at 25 metre intervals (Figure 3). The survey was carried out using an EG & G Geometrics UniMag II portable proton magnetometer without a base station.

The UniMag 11 proton magnetometer is a complete system designed for general field applications. The unit provides one gamma accuracy with the sensor detached from the unit and connected to the staff and ten gamma absolute accuracy without the staff. Each measurement is based upon an atomic constant and is independent of temperature, humidity and sensor orientation.

### Survey Results

A distinct narrow magnetic low in the southwest corner of the survey area extending from 200E on L8050N to 000E on L9200N. This feature corresponds to a creek and a previously mapped fault. This zone trends 155° and probably corresponds to the previously mapped 165° structural trend on the property.

In the northeast corner of the survey area magnetic lows at 9450N, 475E and 9600N, 350E may represent a structure of similar orientation.

A broader magnetic low extending from L9200N, 300E to L9450N, 075E may represent a larger zone of similar orientation.

A series of magnetic lows extending in a north-northeasterly direction from L8050N, 200E to the area of L9300N, 350E suggests that another structural zone may exist in this area. Anomalous drill holes AH90-3 and AH90-4 on line 9200N is located over this magnetic low which is bounded to the east and west by distinct magnetic highs that presumably form a part of the magnetic high noted in the 1990 BP/Selco exploration program.

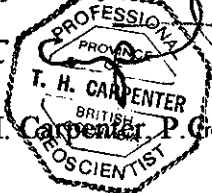
## CONCLUSIONS AND RECOMMENDATIONS

Drilling in 1990 returned significant gold assays associated with a coincident north-northwest trending magnetic and IP anomaly on the present Aplite claims. This largely untested structure extends a possible 2 km north-northwest from the anomalous drill holes. This magnetic anomaly has been confirmed by a ground magnetometer survey in 2000.

Future exploration in the area should include diamond drilling to test the known mineralization along the presumed NNW strike of the mineralization.

No exploration has been carried out to date in the western part of the claim area. BP/Selco had recommended mapping, sampling and geophysical surveys in this area in 1991. Work by BP/Selco in 1990 and previous work by Noranda indicate a potential for mineralization in this area. The program as recommended by BP/Selco should be carried out.

Respectfully submitted,

  
T.H. Carpenter, P. Geo.

Vernon, BC

March 1, 2001

## BIBLIOGRAPHY

Armstrong, J.E. 1949 Fort St. James Map Area. Cassiar and Coast District, British Columbia, G.S.C. Memoir 252.

British Columbia Ministry of Energy, Mines and Petroleum Resources – Geology, Exploration and Mining in British Columbia

1970 – pg. 181

1972 – pg. 449

British Columbia Ministry of Energy, Mines and Petroleum Resources Assessment Reports #2450, 3865, 3962, 4430, 4431, 4653, 5148, 5212, 12149, 13342, 20876 and 20943.

Garnett, J.A. 1978. Geology and Mineral Occurrences of the Southern Hogen Batholith. British Columbia Ministry of Energy, Mines and Petroleum Resources, Bulletin 70.

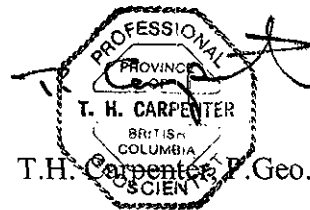
## STATEMENT OF WORK

1. Professional Services			
T.H.Carpenter (P.Geo.)			
Report Writing & Data Interpretation			
1.5 days @\$400/day			\$ 600.00
R.A. Tilsley (Geologist)			
MAG survey, prospecting & rock sampling			
(Oct 3 & 6)			
2.0 days @\$400/day	800.00		
			\$ 1,400.00
2. Personnel			
R. Mitchell			
Grid, MAG survey (Oct 3 & 6)			
2.0 days @\$299.78/day	599.56		
Drafting	382.58		
Secretarial	160.00		
			\$ 1,442.14
3. Expenses			
Communications	5.54		
Office	92.60		
Equipment Rental	92.00		
Field Supplies	49.03		
Lodging & Meals	240.46		
			\$ 479.63
	<b>Exploration Expenditures:</b>		<b>\$ 3,021.77</b>
4. Transportation			
a) Helicopter	\$ 3,332.84		
<i>50% of exploration expenditure:</i>	1,510.89	-----	\$ 1,510.89
b) Truck 1215km @30¢/km	\$ 364.50		
gas	86.60		
	451.10	--->	0.00
	<b>Total Assessment Work:</b>		<b><u>\$ 4,532.66</u></b>

## STATEMENT OF QUALIFICATIONS

I, THOMAS H. CARPENTER of 3902 14<sup>th</sup> Street, Vernon, B.C., V1T 3V2, DO HEREBY CERTIFY that:

1. I am a consulting geologist in mineral exploration with Discovery Consultants, Vernon, B.C.
2. I have been practicing my profession since graduation.
3. I am a 1971 graduate of the Memorial University of Newfoundland with a Bachelor of Science degree in geology.
4. I am a Professional Geoscientist with the Association of Professional Engineers and Geoscientists of British Columbia.
5. This report is based upon knowledge of the Aplite property gained from a review of earlier work and supervision of the present program.



Vernon, B.C.  
March 01, 2001





LEGEND

26,555

-- L9550N  
○ ○ ○ ○

Mag grid location

Mag values in gammas

○ 7335 ○ 7256 ○ 7222 ○ 7045

100 gamma contour line

○ 7222

500 gamma contour line

○ 7500

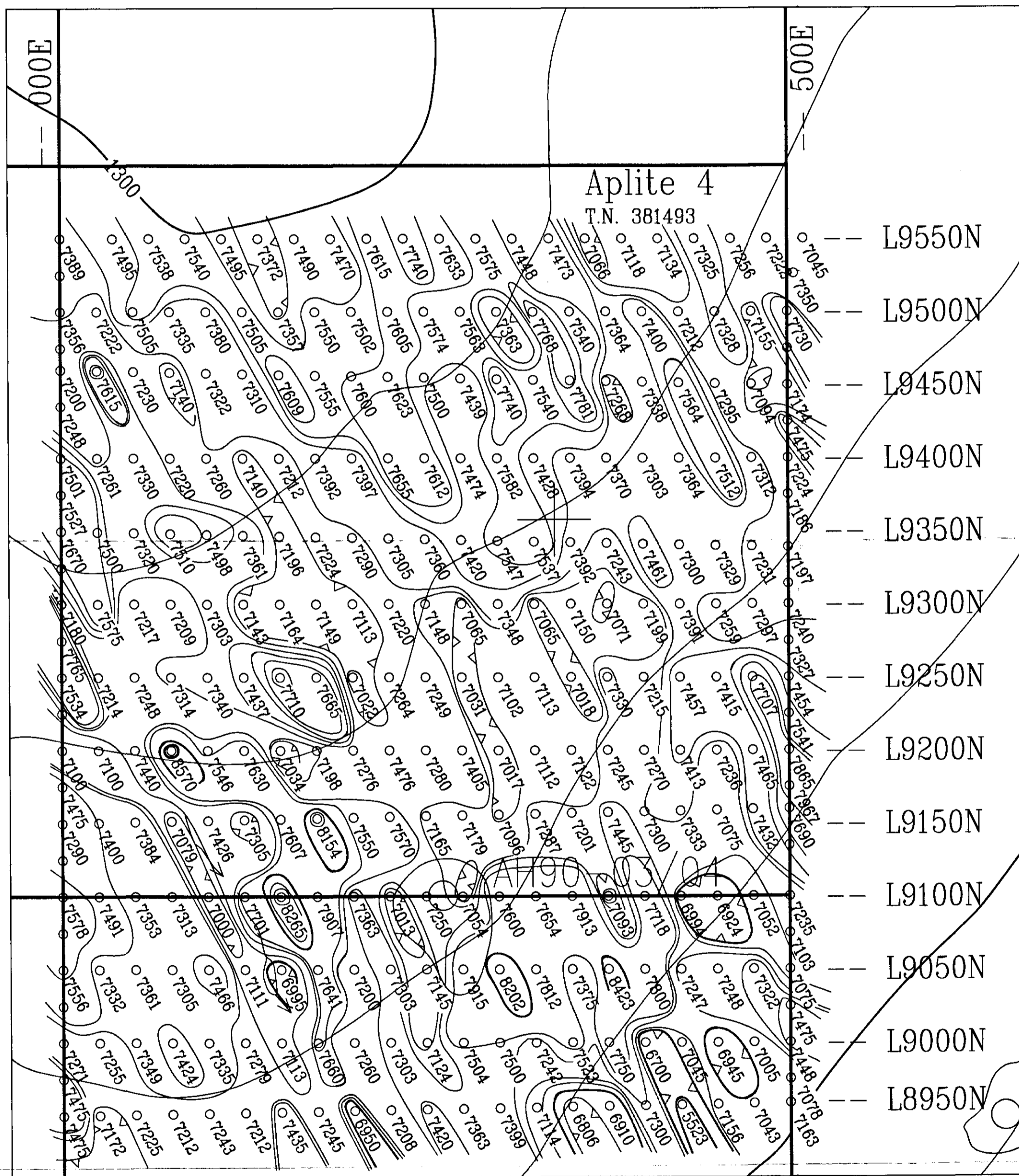
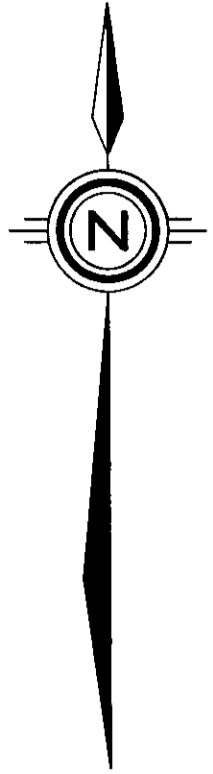
○ 8025

1000 gamma contour line

Instrument used = Geometrics UNIMAG II

Model G-846

Datum = 50,000 gammas



**DISCOVERY** Consultants

Peregrine Syndicate

Aplite Creek Property

Magnetometer Survey

