

ASSESSMENT REPORT  
PROSPECTING PROGRAM

**SPIRIT DREAM PROPERTY**  
SPIRIT DREAM AND SD CLAIMS  
FORT STEEL MINING DIVISION

N.T.S. MAPSHEET 82G073

Latitude 49°44'00N

Longitude 115° 34'00"W

Work Performed late April-early May 2001

OWNER

Brian Kostiuk  
514-13th Ave. South  
Cranbrook BC

REPORT BY

Craig Kennedy  
Prospector  
2290 Dewolfe Ave.  
Kimberley BC

GEOLOGICAL SURVEY BRANCH  
ASSESSMENT REPORT

26,587

## Table of Contents

	<u>Page</u>
1.00 INTRODUCTION	3
1.10 Location & Access	3
1.20 History	3
1.30 The Property	3
2.00 PROSPECTING	7
3.00 CONCLUSION	9
4.00 STATEMENT OF EXPENDITURES	10
5.00 AUTHOR'S QUALIFICATIONS	11

## List of Illustrations

Figure 1-Property Location Map	5
Figure 2-Claim Location Map	6
Figure 3-Prospecting Map	In Pocket

## **SPIRIT DREAM - SD PROPERTY**

### **PROSPECTING ASSESSMENT REPORT**

Craig Kennedy

August 2001

---

#### **1.00 INTRODUCTION**

##### **1.10 LOCATION & ACCESS**

The Spirit Dream and SD mineral claims are located approximately 15 km north-east of Fort Steele BC. See location map (figure 1) for claim location. The claims are located in the middle of Wildhorse Creek Valley in the Fort Steele Mining Division. The claims are located on reference map NTS 82G073, centered near latitude 49° 44'N, longitude 115° 34'W. The property is accessed by good logging roads on both sides of Wildhorse Creek, though steep and well vegetated all of the mineral property is accessible by foot.

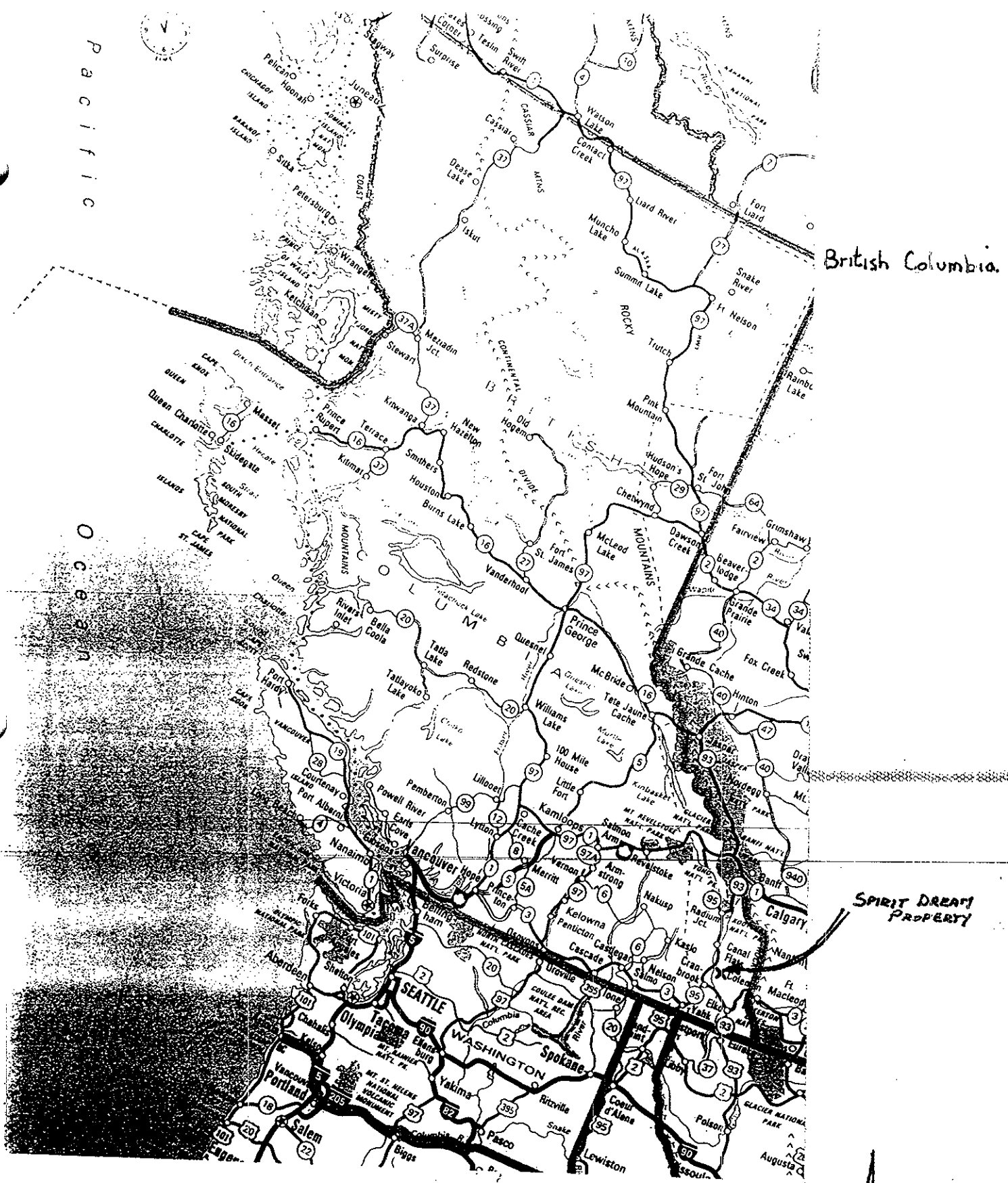
##### **1.20 HISTORY**

This area has been held under tenure by Majors, Juniors and individuals through the last 100 plus years.

##### **1.30 THE PROPERTY**

The Spirit Dream and SD claims (figure 2) are a contiguous block of claims owned by Brian Kostiuk of Cranbrook BC.

<b>CLAIM NAME</b>	<b>UNITS</b>	<b>TENURE #</b>	<b>DUE DATE</b>
Spirit Dream 1	1	377538	May 14, 2002
Spirit Dream 2	1	377539	May 14, 2002
Spirit Dream 3	1	377540	May 14, 2002
Spirit Dream 4	1	377541	May 14, 2002
SD 1	1	378588	May 14, 2002
SD 2	1	378589	May 14, 2002
SD 3	1	378590	May 14, 2002
SD 4	1	378591	May 14, 2002
SD 5	1	378592	May 14, 2002
SD 6	1	378593	May 14, 2002



SPIRIT DREAM PROPERTY

---

PROPERTY LOCATION MAP

Map Reference: Scale: 1:125,000

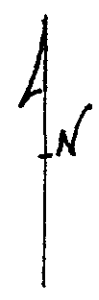
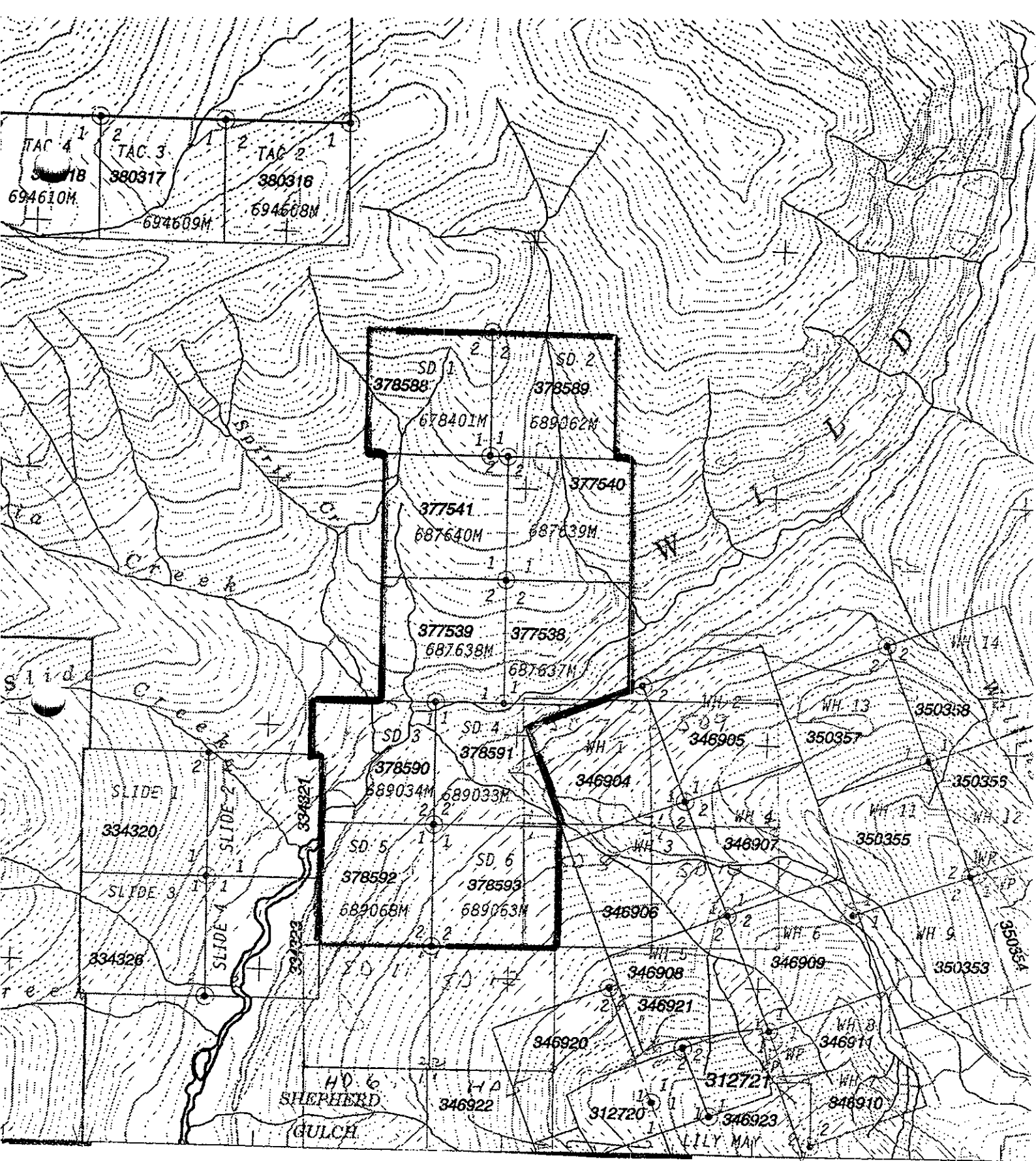


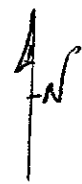
FIGURE 1



SPIRIT DREAM PROPERTY  
CLAIM MAP

82G-073

1:20,000  
FIGURE 2



## 2.00 PROSPECTING REPORT - SPIRIT DREAM CLAIMS

A initial prospecting program was completed on the Spirit Dream Claim Group in the Spring of 2001. Review of previous geological and geochemical work provided good frame-work for this program. With the initial prospecting success more claims have been staked.

The three major features of interest encountered during the prospecting program are as follows:

- 1) Gold Alteration
- 2) Mineralization
- 3) Nickel-chrome rich dikes

### 1) Gold alteration

Zones commonly associated with gold alteration were noted in two areas, one on the northern claims, the other just off the southern claim boundary. Both zones are within the middle aldrige turbidite sequence. This sequence consists of mixed intervals of thin bedded siltstone argillite units with intermixed medium beds of fine to medium grained sandstones and quartzites. The alteration is dominated by bullseye weathering a product of multiple iron rich solution pulses. The other important feature is increases in sericite mica content and very noticeable increases in silicification both general and in veining. These zones are distinct in the fact veining is always discrete to micro, and seemingly discontinuous in nature. Large veins rarely exceed 20 cm in width, and quartz content may only represent a quarter the alteration zone. These zones quite commonly reach widths in excess of twenty meters. In other areas of the district this type of alteration is associated with major fault zones known to host gold mineralization. (Baldy faults - Perry Creek, Moyie River area, St. Mary fault - Perry Creek, Sawmill Creek area.) The prominent iron minerals in order of quantity are limonite, pyrite, hematite, and magnetite. Hematite and magnetite are rarely seen but when found are in zones with a noticeable pink to red coloration. The limonite and pyrite is found in all areas with increased amounts of silicification. More veining and adjacent silicification host larger volumes of iron sulphides. Base metals when noted are only rare blebs or grains of chalcopyrite and or galena. In the Wildhorse Creek area adjacent alteration is marked by very extensive zones of iron carbonate and quartz calcite

veining. To date this alteration type has not yielded any gold mineralization of importance. These zones however seem to be a product of the extensive intrusive activity in the Wildhorse Valley. For that reason sample collection should be continued where strong zones are found.

## 2) Mineralization

Known mineralization exists on the property in two locations. The old Palmayra workings are found along the western claim boundary north of Wildhorse Creek. The other occurrence, the Ford Vein is located on the south west corner of the claim group. These two occurrences are very similar in nature and probably exist along the same structural zone. Sporadically developed pyrite, galena and chalcopyrite exist in a flat dipping (east) glide zone. This structural zone is dominated by more than one white ribbon quartz vein with black argillite partings. Individual veins are up to 1 meter in width, the widest zones of veining exist on the old Palmayra workings at their northern most exposure.

Three other minor occurrences of mineralization were noted during the prospecting program. Two were weak zones of disseminated grains of yellow sphalerite in dolostone pods within thin bedded siltstones and argillites of Hughes range lower aldrige. The third and most interesting occurrence is 500 meters east of the eastern boundary of SD4. (additional claims have been staked to cover this area) Here fracture lead-zinc mineralization is found in poorly exposed thin-bedded argillite units which exist with a massive coarse grained quartzite bed. This zone is interpreted to be part of the Kootenay King quartzite sequence. These are the same rock which host the Kootenay King sedex zinc lead deposit west of the claim group.

## 3) Nickel-chrome rich dikes

The entire claim group host numerous Fuchsite/Mariposite dikes. The dikes have a brown grey matrix with plentiful green and yellow chips. All dikes observed have fine grained pyrite, some show signs of minor brecciation with quartz veining. Sampling of these dikes and swarms is warranted as they could be important indicators of potential gold mineralization.



### 3.00 CONCLUSION

The Spirit Dream and SD claims occupy a structurally complex area in the Wildhorse Creek Valley, the property is flanked by the Kootenay King deposit on the west and the Dardenelle and Tit for Tat gold occurrences on the east. All mineralization and alteration found should be taken seriously. Future work should include evaluation of all mineralized occurrences and extensive sampling of altered zones.

4.00

## STATEMENT OF EXPENDITURES

Prospecting Program  
Spirit Dream Property

Work performed from April 25 to May 10, 2001

## PROSPECTING CONTRACTOR:

Craig Kennedy, Kimberley BC 5days @ \$330.00/day	\$1,650
Craig Kennedy - report preparation and writing 2 days @ \$250.00/day	500
Transportation - 4X4 truck 5 vehicle days @ \$100/day	500
Miscellaneous Supplies	<u>100</u>
Total:	<u>\$2750</u>

*Craig Kennedy*


---

 Craig Kennedy  
Prospector

5.00

### Statement of Qualifications

As the author of this report I, Craig Kennedy, certify that:

1. I am an independent prospector residing at 2290 Dewolfe Avenue, Kimberley BC.
2. I have been actively prospecting in the East Kootenay district of BC for the past 25 years and have made my living prospecting for the past 12 years.
3. I have been employed as a professional prospector by major and junior mineral exploration companies.
4. I own and maintain mineral claims in BC and have optioned numerous claims to various exploration companies.

*Craig Kennedy*

---

Craig Kennedy  
Prospector

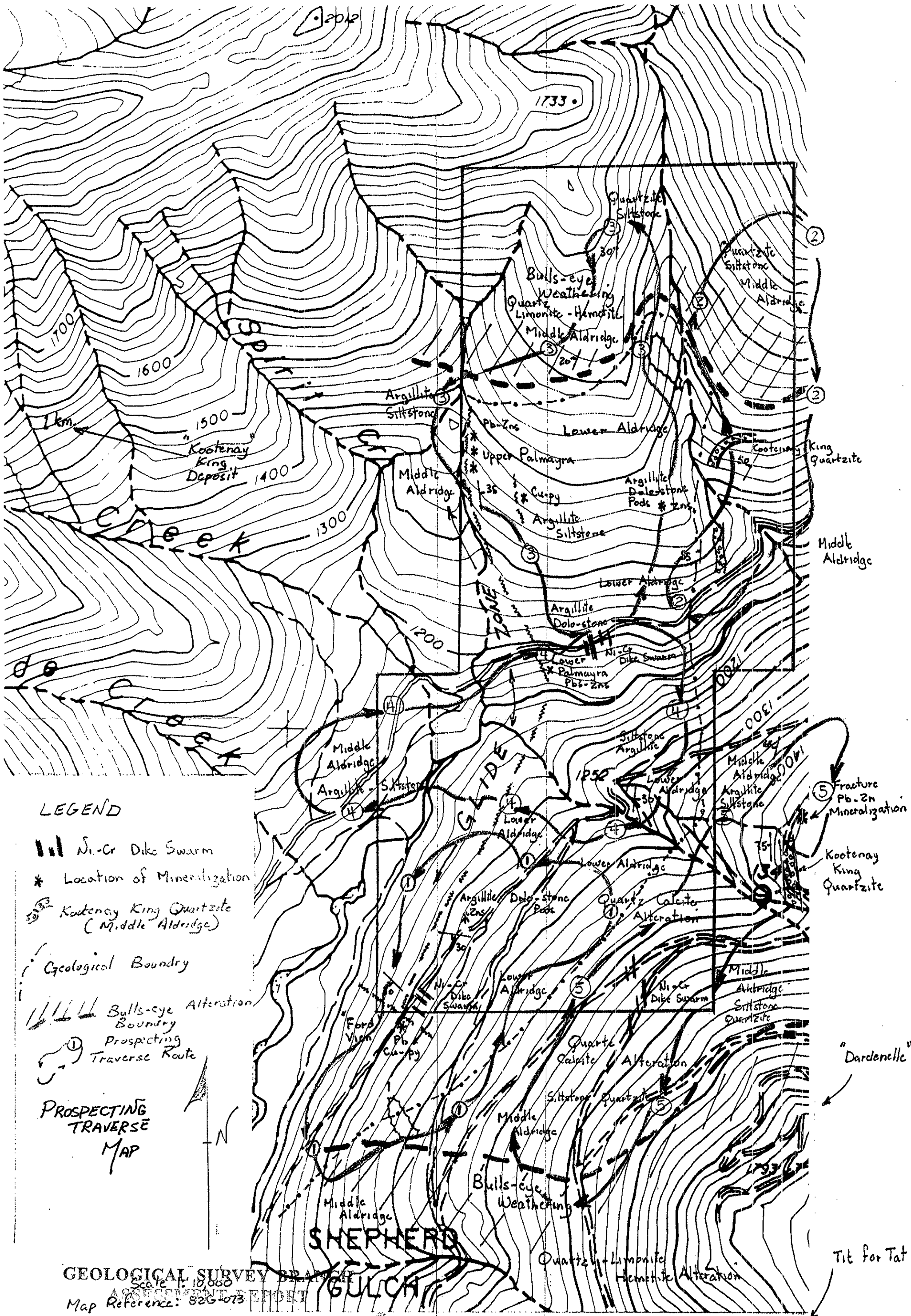


FIGURE 3