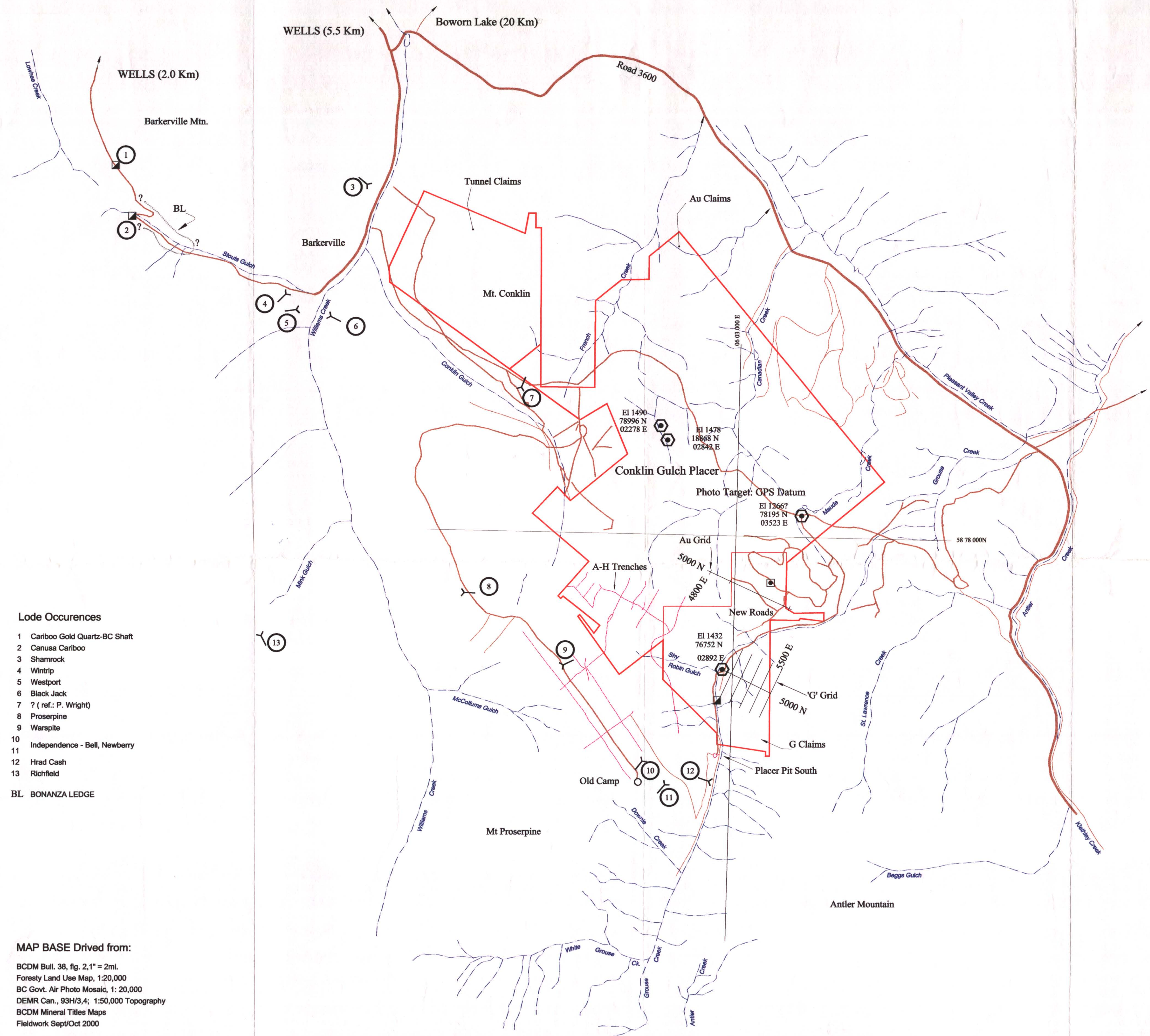
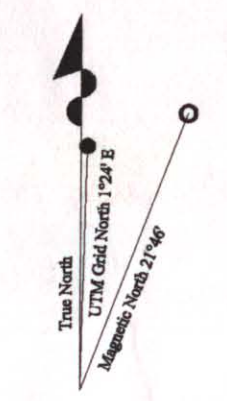


26603

Maps Only





**Lode Occurences**

- 1 Cariboo Gold Quartz-BC Shaft
  - 2 Canusa Cariboo
  - 3 Shamrock
  - 4 Wintrip
  - 5 Westport
  - 6 Black Jack
  - 7 ? (ref.: P. Wright)
  - 8 Proserpine
  - 9 Warspite
  - 10 Independence - Bell, Newberry
  - 11 Hrad Cash
  - 12 Richfield
  - 13 Richfield
- BL BONANZA LEDGE

**MAP BASE Drived from:**

BCDM Bull. 38, fig. 2, 1" = 2mi.  
 Forestry Land Use Map, 1:20,000  
 BC Govt. Air Photo Mosaic, 1: 20,000  
 DEMR Can., 93H/3,4; 1:50,000 Topography  
 BCDM Mineral Titles Maps  
 Fieldwork Sept/Oct 2000

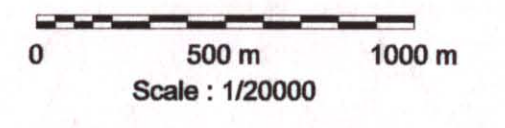
Note: Park Boundaries not shown

GEOLOGICAL SURVEY BRANCH  
ASSESSMENT REPORT

26.603

Golden Cariboo Resources Ltd.

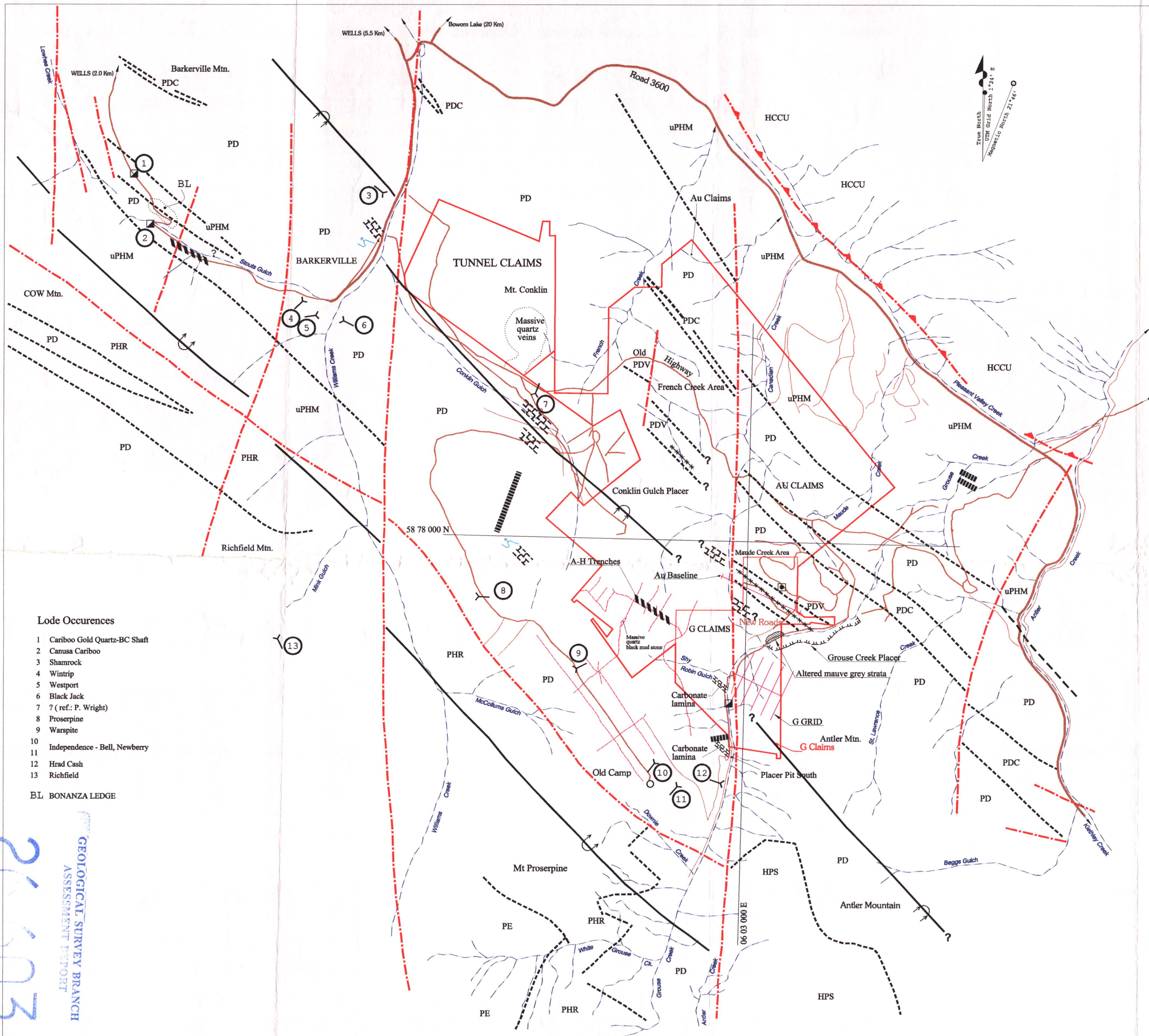
G, AU and TUNNEL CLAIMS  
 GROUSE CREEK AREA  
 BARKERVILLE, B.C.



TC SCOTT Dec. 2000 93H/3,4 Figure 2

26603 (D)





- LEGEND**
- Barkerville Terrane - Snowshoe Group**
- uPHM Hardscrabble Mountain succession: black siltite and phyllite, grey micaceous quartzite, limestone, minor metatuff?
  - PE Eaglesnest succession: olive and grey micaceous quartzite and phyllite
  - PD Downey succession: olive and grey micaceous quartzite, and phyllite; PDC, marble, includes some phyllite; PDV, matatuff and metadiorite
  - PHR Harveys Ridge succession: grey micaceous quartzite, black quartzite and interbedded dark grey phyllite, schist siltite and minor limestone
  - HPS Snowshoe Group: undifferentiated
- Cariboo Terrane - Cariboo Group**
- HCCU Cariboo Group: undifferentiated

- SYMBOLS**
- Geological Boundaries (approx.) - - - - -
- Fault (approx.) - - - - -
- Thrust Fault (approx.) - - - - -
- Anticline (overturned) - - - - -
- Syncline (overturned) - - - - -
- Adit - - - - -
- GPS Station - - - - -
- Magnetic horizon - - - - -

- Chlorite schist - - - - -
- Limestone - - - - -
- Proserpine intrusions - - - - -

- Lode Occurrences**
- 1 Cariboo Gold Quartz-BC Shaft
  - 2 Camusa Cariboo
  - 3 Shamrock
  - 4 Wintrip
  - 5 Westport
  - 6 Black Jack
  - 7 ? (ref.: P. Wright)
  - 8 Proserpine
  - 9 Warspite
  - 10 Independence - Bell, Newberry
  - 11 Hrad Cash
  - 12 Richfield
  - 13
- BL BONANZA LEDGE

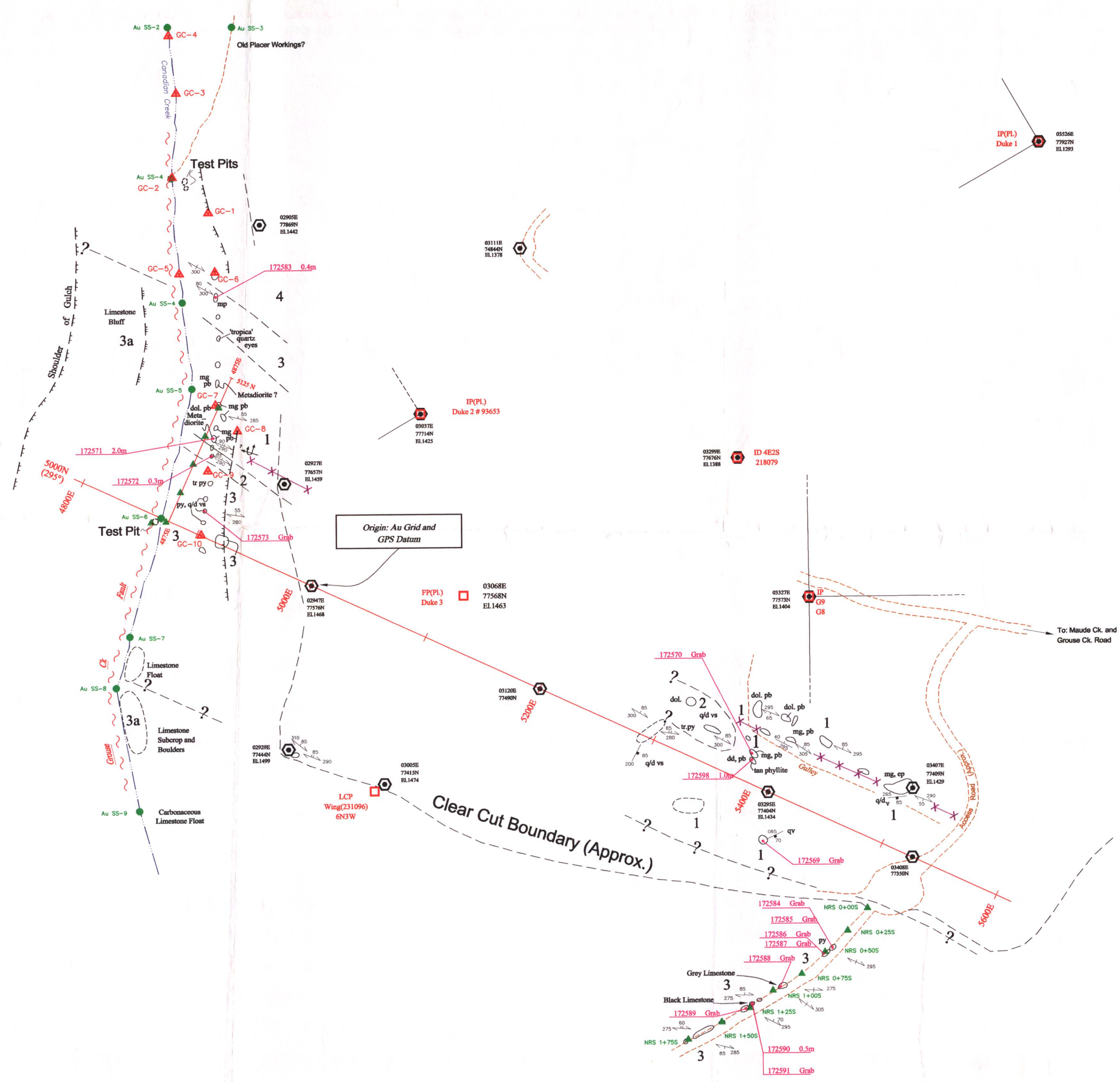
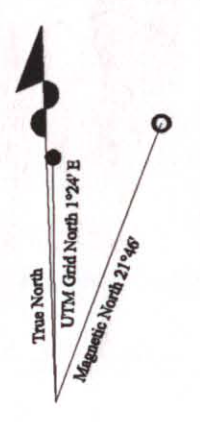
26603  
 GEOLOGICAL SURVEY BRANCH  
 ASSESSMENT REPORT

Geology After: Struik, L.C., 1988: GSC MeMOIR 421  
 Sutherland Brown, A, 1957: BCDM Bulletin No. 38  
 Filedwork by T.C. Scott and R.Fershaw, 2000

Golden Cariboo Resources Ltd.  
 G, AU and TUNNEL CLAIMS  
 GROUSE CREEK AREA  
 BARKERVILLE, B.C.

0 500 m 1000 m  
 Scale : 1/20000  
 TC SCOTT Dec. 2000 93H/3,4 Figure 3





**LEGEND**

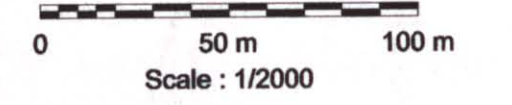
- 1 Micaceous Quartzite -  
quartz sericite phyllite and phyllitic quartzite
- 2 Calcareous Quartzite & Phyllite  
± grey to black limestone, siltstone  
3a grey-white limestone - phyllitic
- 3 Black Siliceous Siltstone
- 4 Green Quartz - Sericite - Chlorite Phyllite  
incl. Metadiorite  
+ magnetite porphyroblasts

**SYMBOLS**

- |                                       |               |
|---------------------------------------|---------------|
| Geological boundary (assumed)         | - - - - -     |
| Bedding                               | —+—+—+—       |
| Schistosity (S?)                      | —+—+—+—       |
| Cleavage (S?)                         | —+—+—+—       |
| Fault                                 | ~ ~ ~ ~ ~     |
| Shear                                 | —+—+—+—       |
| Vein attitude                         | —+—+—+—       |
| Outcrop (grouped)                     | ○ ○ ○ ○ ○     |
| Cliffs and bluffs                     | —+—+—+—       |
| Sample site - soil                    | NRS 1+255 ●   |
| silt                                  | Au SS-8 ●     |
| rock                                  | 172589 Grab → |
| GPS station (coordinates uncorrected) | ⊕             |
| Claim post - mineral                  | LCP, ID □     |
| placer                                | IP, FP(p) □   |
| Traverse station                      | GC-1 ▲        |
| Access roads - approx.                | - - - - -     |
| Magnetite horizon                     | X-X-X-X-X     |
| Minor fold                            | ∩             |
- 
- |                  |         |
|------------------|---------|
| magnetite        | mg      |
| mariposite       | mp      |
| pyrite           | py      |
| quartz           | q       |
| dolomite         | dol., d |
| vein or veinlets | v, vs   |
| porphyroblasts   | pb      |
| epidote          | ep      |

Golden Cariboo Resources Ltd.

G, AU Claims  
MAUDE CREEK AREA  
Geology and Sample Locations



TC SCOTT Dec. 2000 Figure 5



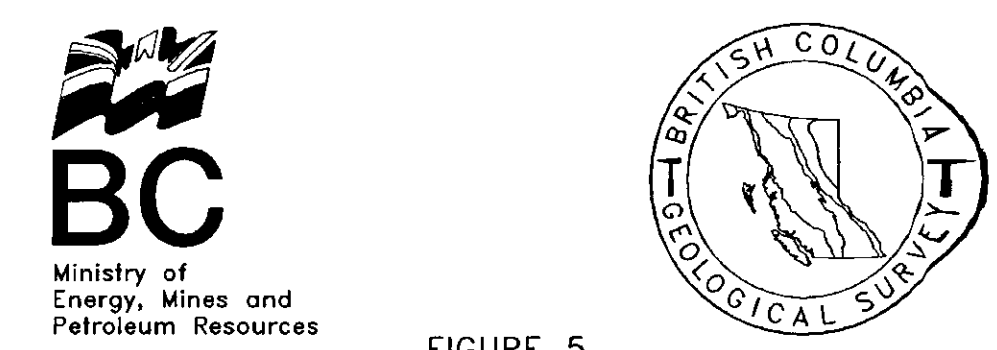
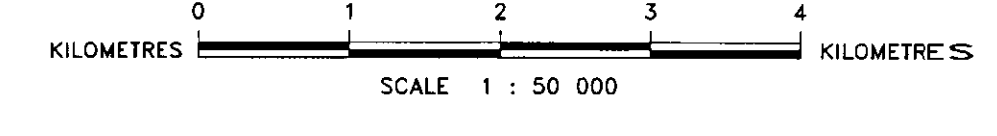


FIGURE 5  
PAPER 1990-3  
**GEOLOGY OF THE EUREKA PEAK -  
MACKAY RIVER AREA AND THE  
SPANISH LAKE AREA  
CENTRAL BRITISH COLUMBIA  
NTS 93A/7, 11**

BY MARY ANNE BLOODGOOD  
(SEE BELOW FOR ADDITIONAL SOURCES OF DATA)



- LEGEND**
- RECENT**
- QUATERNARY**
    - Qal** Till, alluvium, colluvium
- INTERMONTANE BELT**
- LATE TRIASSIC - EARLY JURASSIC**
- NICOLA GROUP**
- JNb** Massive porphyritic flows, breccia and tuff
  - JTa** Massive flows, agglomerates, ashflow tuffs, pillow basalts, mafic dikes and minor limestone
- MIDDLE - LATE TRIASSIC**
- NICOLA GROUP**
- Td** Volcanic sandstone and wacke
  - Tc** Volcaniclastic
  - Tb** Banded slates and tuffs, minor fossiliferous phyllites and limestone  
V. = volcanic flows and tuffs
- TA** Black phyllites  
**Ta6** Graphitic black phyllites, with interbedded quartz sandstone and limestone  
**Ta5** Silty slates  
**Ta4** Laminated phyllite and porphyroblastic phyllite  
**Ta3** Phyllitic siltstone  
**Ta2** Micaceous black phyllite and tuff  
**Ta1** Micaceous quartzite
- PALEOZOIC**
- MISSISSIPPIAN - EARLY PERMIAN (?)**
- Pca** Crooked Amphibolite: amphibole - chlorite schist, chlorite - epidote schist, ultramafic nodules
- OMINECA BELT**
- LATE DEVONIAN TO MIDDLE MISSISSIPPIAN**
- QUESNEL LAKE GNEISS**
- QLG** Quartz feldspar gneiss, augen gneiss
- HADRYNIAN AND YOUNGER**
- SNOWSHOE FM**
- HPa** Alkali feldspar augen gneiss
  - HPs** Pelitic schist, minor quartzite
  - HPsm** Sandy marbles layers and lenses
  - HPu** Undifferentiated

- SYMBOLS**
- Geological contact (observed, inferred or extrapolated) -----
  - Fault contact -----
  - Cross-cutting fault -----
  - Bedding (strike/dip) -----
  - Foliation -----
  - Primary metamorphic foliation (Omineca Belt) -----
  - Lineation (trend/plunge) -----
  - Axial trace of minor structures
    - Antiform -----
    - Synform -----
    - Overtuned -----

**Mineral Occurrences:**

MINFILE No.	Property	Commodity
	Frasergold	Au, Ag, Cu, Zn, Pb
	Eureka Peak	Cu, Au
	CPW	Au, Pb, Zn

Based on British Columbia Ministry of Energy, Mines and Petroleum Resources MINFILE data.

Moose	Au, Ag, Cu, Pb, Zn
Trump	Ag, Pb
Providence	Ag, Pb, Au, Zn
Big	Ag, Pb, Au

**Additional Data:**

Bloodgood, M.A. 1987. Geology of the Triassic Black Phyllite in the Eureka Peak Area, Central British Columbia (93A/7), British Columbia Ministry of Energy, Mines and Petroleum Resources, Geological Fieldwork, 1986, Paper 1987-1.

Campbell, R.V. 1971. Metamorphic Petrology and Structural Geology of the Crooked Lake area, Cariboo Mountains, British Columbia. Ph.D. Thesis. University of Washington, Seattle, Washington, 192 pages.

Campbell, R.B. 1978. Quesnel Lake (93A) Map-area, British Columbia. Geological Survey of Canada, Open File Map 574.

Carye, J.A. 1966. The Structural Geology of the Crooked Lake Area, Quesnel Highlands, British Columbia. M.Sc. Thesis, University of British Columbia, Vancouver, British Columbia, 185 pages.

Elsby, D.C. 1985. Structure and Deformation Across the Quesnelia-Omineca Terrane Boundary, Mt. Perseus Area, East-central British Columbia. M.Sc. Thesis, University of British Columbia, Vancouver, British Columbia, 178 pages.

Filipone, J.A. 1985. Structure and Metamorphism of the Omineca Belt Near Boss Mountain, East Central British Columbia. M.Sc. Thesis, University of British Columbia, Vancouver, British Columbia, 150 pages.



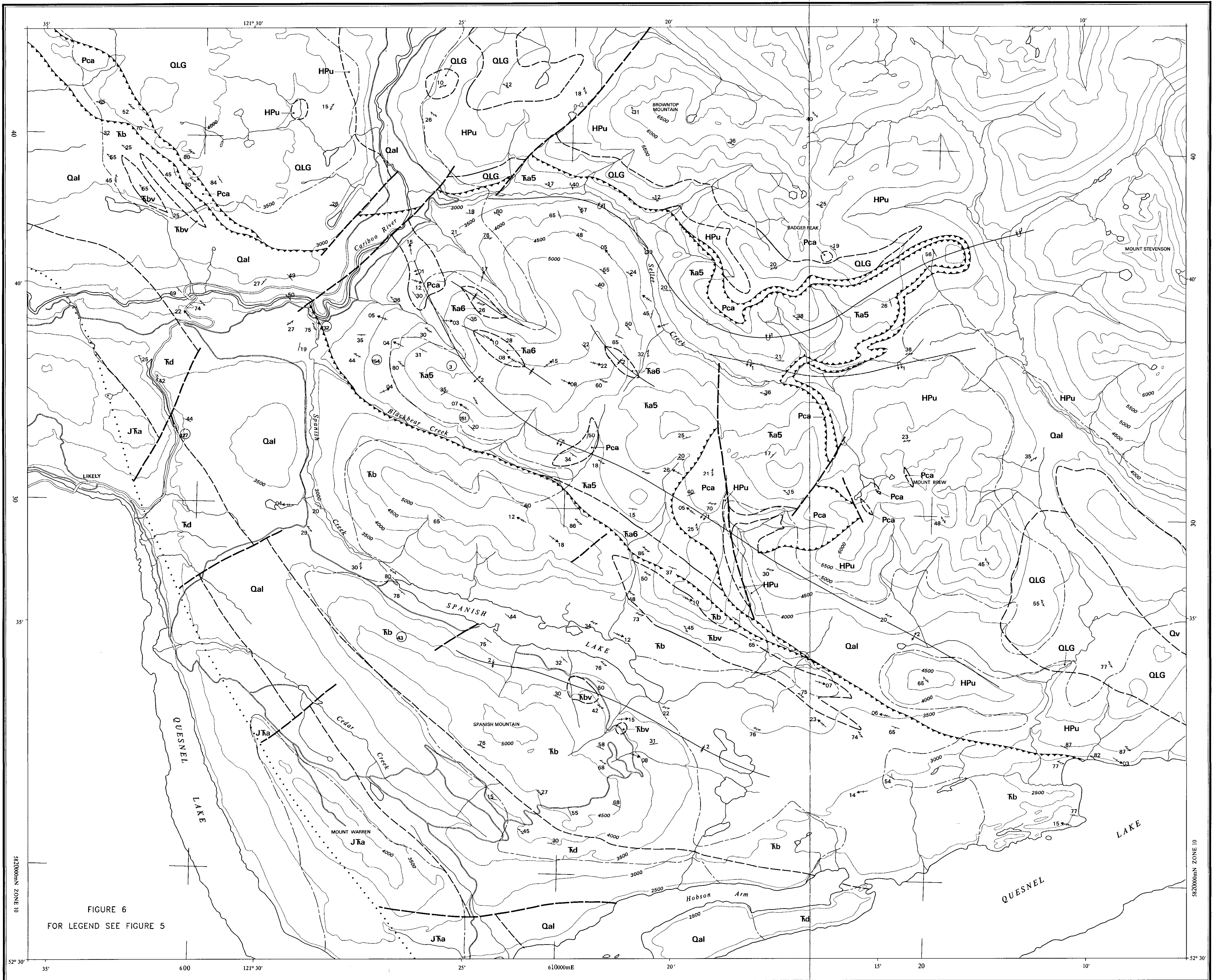


FIGURE 6  
FOR LEGEND SEE FIGURE 5