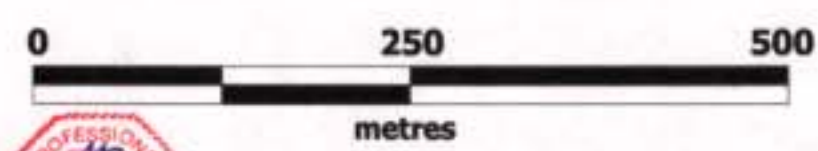


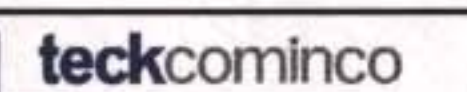
GEOLOGICAL SURVEY BRANCH  
ASSESSMENT REPORT

26,719

- MAFIC BASALTIC VOLCANICS**
- 101 Basalt Flows (pillowed)
- 102 Flow Breccias - Androbasite
- 103 Flows - Resedimented / with volcanic wackes
- 104 Tuffs
- INTERMEDIATE - ANDESITIC VOLCANIC**
- 105 Andesite Flows
- 106 Maroon / Green Flow Breccias - Volcanoclastic
- 107 Maroon / Green Epiclastics
- 108 Dacite Flow mixed tuffs / sediments with mafic, felsic and sediment fragments
- FELSIC VOLCANICS - DACITE / RHYOLITE**
- 109 FP Dacite Flows / Domes / Dykes
- 110 FP Dacite Flow Breccias Volcanoclastic
- 111 Dacite Tuffs
- 112 Flow Banded Rhyolite
- 113 Mixed Rhyolite Hyaloclastics
- 114 Rhyolite Volcanoclastic
- 115 Tuffs
- SEDIMENTS**
- 116 Mudstone / Siltstone
- 117 Shale / Argillite
- 118 Wacke
- 119 Chert
- 120 Conglomerate
- 121 Limestone
- INTRUSIVES**
- 122 Fy / Hs Monzonite
- 123 Granodiorite
- 124 Diorite
- 125 Lamprophyre
- Supgrade Veins and Massive Suphrates



Teck Cominco Limited  
P.O. Box 600, Station Main,  
Kelowna, B.C. V2C 9H1

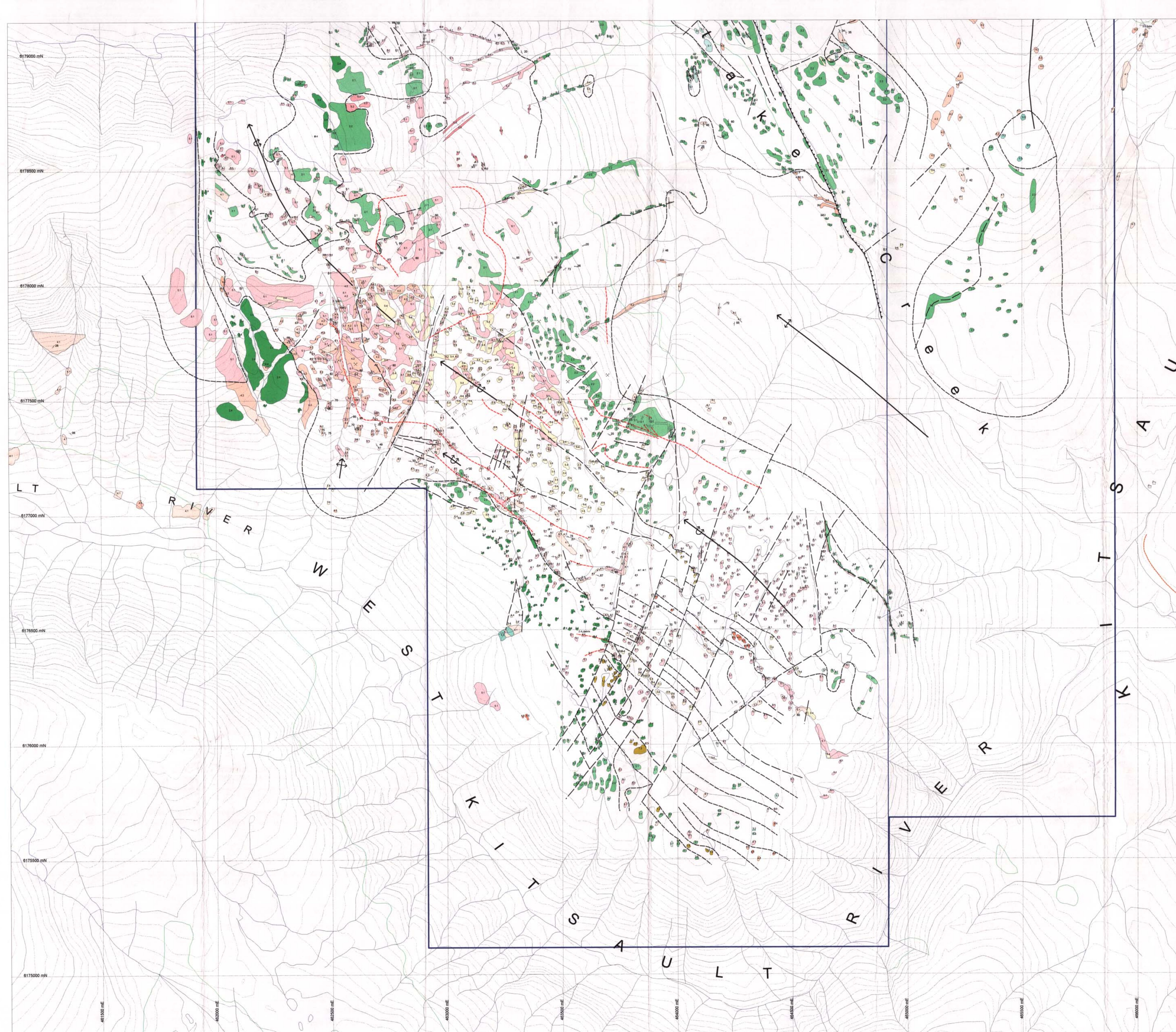


**HOMESTAKE RIDGE PROJECT**  
KITSALT AREA, British Columbia

**PROPERTY GEOLOGY**

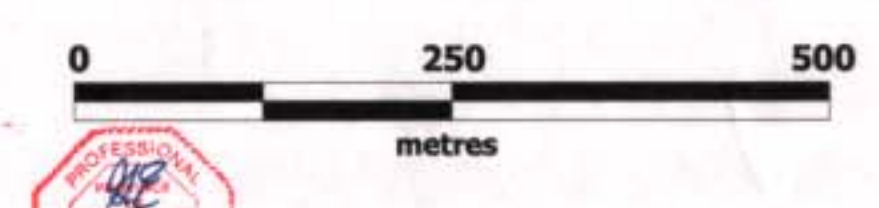
NORTH SHEET  
SCALE 1:5000 DATA BY: G. Owen NTS No: 1839-072,073  
DATE: DEC 13, 2001 DRAWN BY: S.A.D.D. DWG: 46/00-Geology-Prop-01a Figure 8





GEOLOGICAL SURVEY BRANCH  
 INVESTIGATION REPORT  
 26,719

- MAFIC-BASALTIC VOLCANICS**
- 11 Basalt Flows (yellow)
- 12 Flow Breccias - Autobreccia
- 13 Flows - Resedimented / with volcanic wackes
- INTERMEDIATE - ANDESITIC VOLCANICS**
- 14 Tuffs
- 15 Andesite Flows
- 16 Maroon / Green Flow Breccias - Volcanoclastics
- 17 Maroon / Green Epitaxials
- 18 Debris Flow mixed tuffs / sediments with mafic, felsic and sediment fragments
- FELSIC VOLCANICS - DACTITE / RHYOLITE**
- 19 FF Dactite Flows / Domes / Dykes
- 20 FF Dactite Flow Breccias Volcanoclastics
- 21 Dactite Tuffs
- 22 Flow Banded Rhyolite
- 23 Mixed Rhyolite Hyaloclastics
- 24 Rhyolite Volcanoclastics
- 25 Tuffs
- SEDIMENTS**
- 26 Mudstone / Siltstone
- 27 Shale / Argillite
- 28 Waste
- 29 Chert
- 30 Conglomerate
- 31 Limestone
- INTRUSIVES**
- 32 Fp / Hb Monzonite
- 33 Gneissite
- 34 Diorite
- 35 Lamprophyre
- 36 Sphulphic Veins and Massive Sulphides



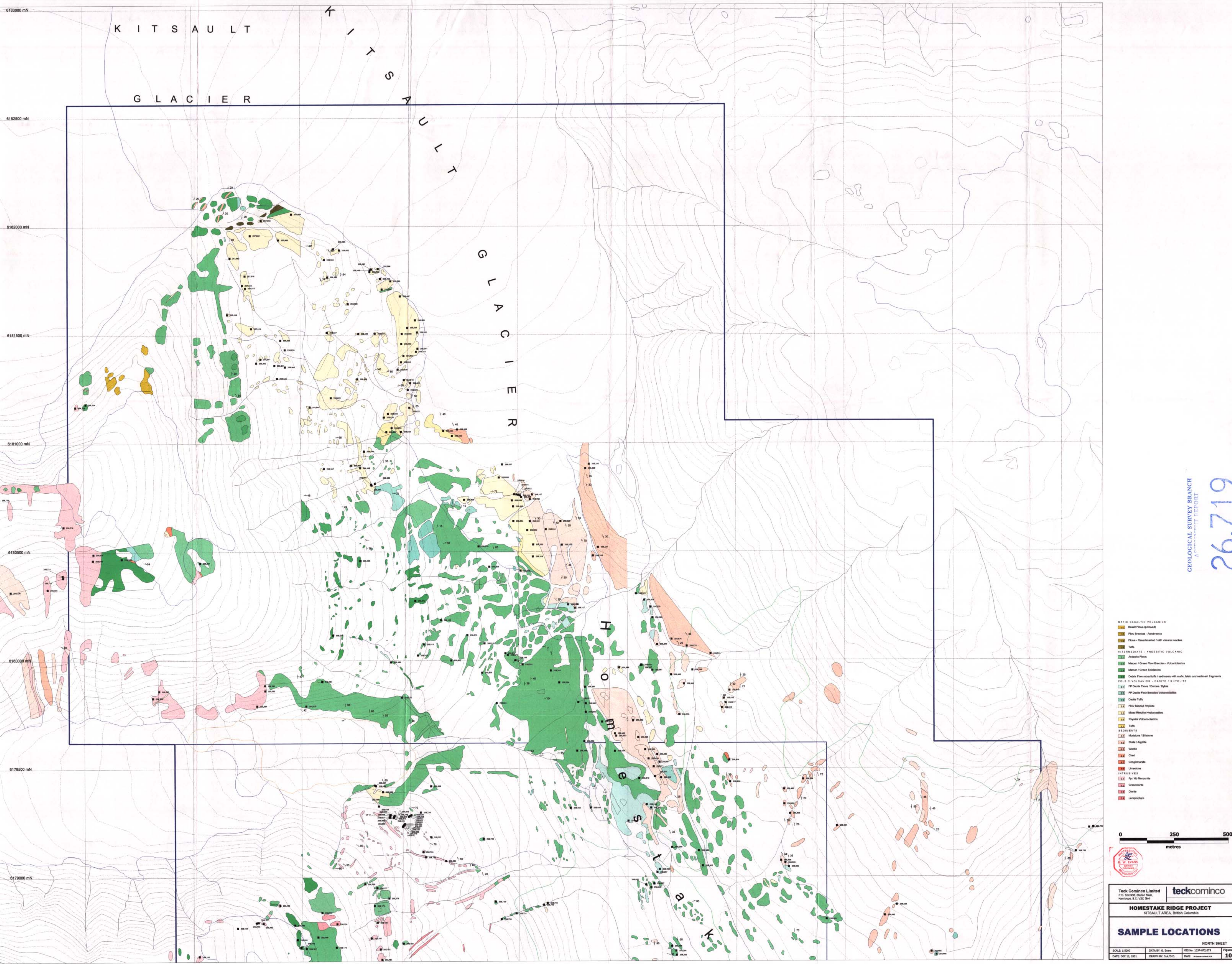
Teck Cominco Limited | **teckcominco**  
 P.O. Box 208, Stobor Man, Kelowna, B.C. V2Y 2R4

**HOMESTAKE RIDGE PROJECT**  
 KITSALAT AREA, British Columbia

**PROPERTY GEOLOGY**

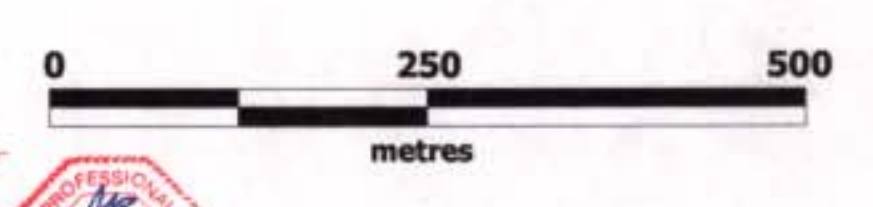
SCALE: 1:2000 | DATA BY: G. Egan | SITE NO: 229-072175 | SHEET: 9  
 DATE: DEC 13, 2001 | DRAWN BY: S.A.D.D. | DWG: 01/01/01/01/01





GEOLOGICAL SURVEY BRANCH  
ASSESSMENT REPORT  
26,719

- MAFIC-BASALTIC VOLCANIC  
100 Basalt Flows (pillowed)  
101 Flow Breccia - Andesitic  
102 Flows - Basaltic / with volcanic nodules  
103 Tuffs
- INTERMEDIATE - ANDESITIC VOLCANIC  
104 Andesite Flows  
105 Magma / Great Flow Breccia - Volcanization  
106 Magma / Great Epithermal  
107 Debris Flow (volcanic tuffs) / sediments with mafic, siliceous and sediment fragments
- FELSIC VOLCANIC - DACITE / RHYOLITE  
108 FP Debris Flows / Dunes / Dykes  
109 FP Debris Flow Breccia Volcanoclastic  
110 Debris Tuffs  
111 Fine Grained Rhyolite  
112 Mixed Rhyolite Hyaloclastics  
113 Rhyolite Volcanoclastic  
114 Tuffs
- SEDIMENTS  
115 Mudstone / Siltstone  
116 Sand / Argillite  
117 Shale  
118 Clay  
119 Conglomerate  
120 Limestone
- INTRUSIVES  
121 Py / Hb Monzonite  
122 Diorite  
123 Diorite  
124 Lamprophyre



Teck Cominco Limited **teckcominco**  
P.O. Box 538, Stouffville, Ontario, Canada  
K7A 1W1

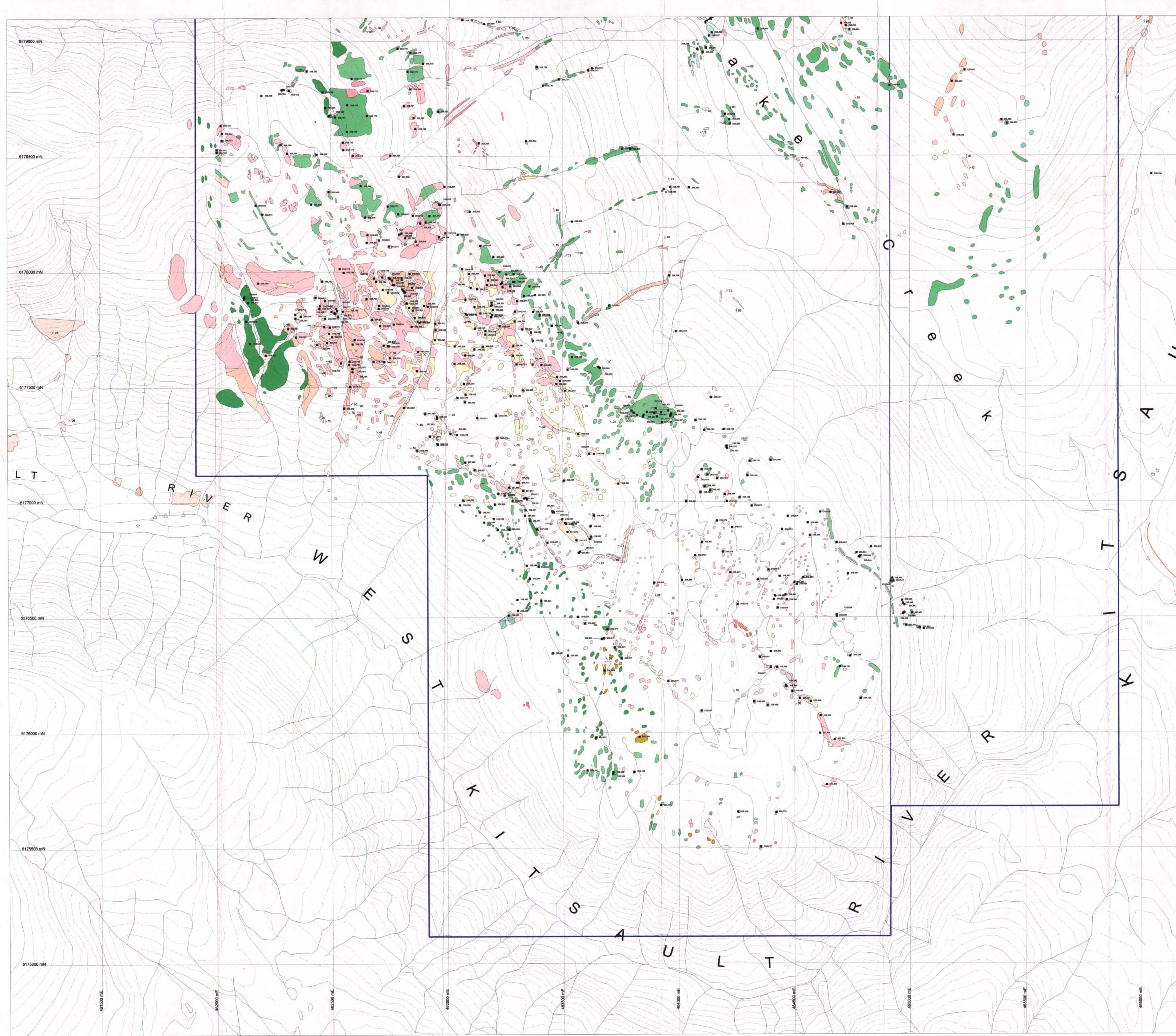
**HOMESTAKE RIDGE PROJECT**  
KITSAULT AREA, British Columbia

**SAMPLE LOCATIONS**

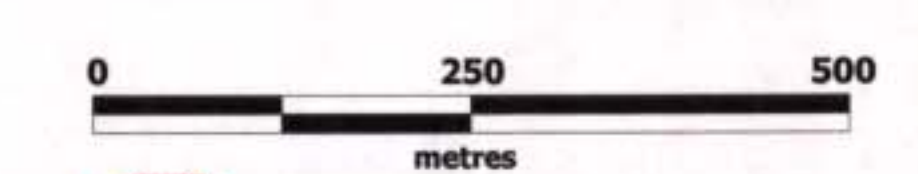
NORTH SHEET

SCALE: 1:5000 DATA BY: G. Evans WTS No: 200P-012013  
DATE: DEC 13, 2001 DRAWN BY: S.A. O.D. DWG: 10



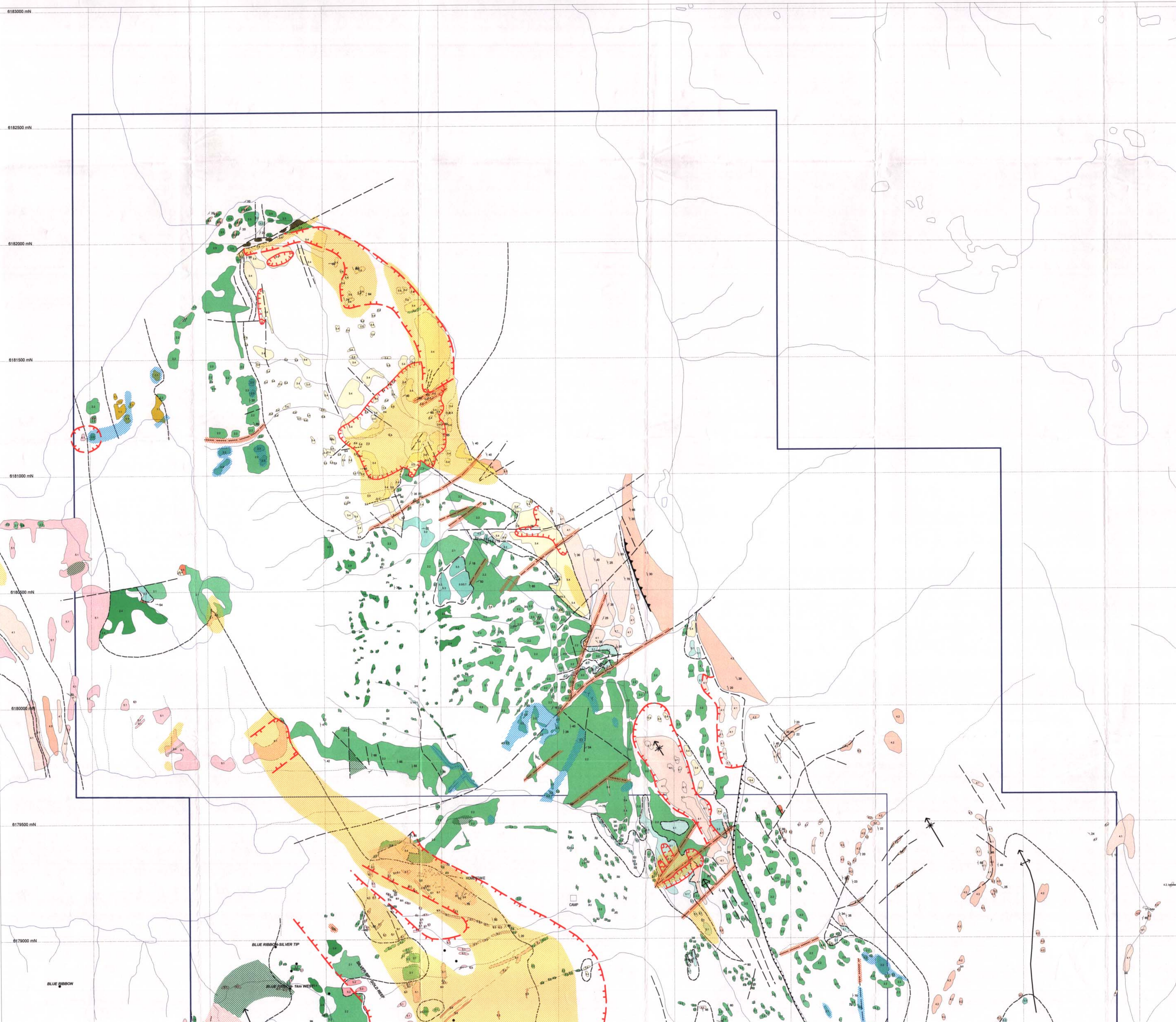


- BAVIC BASALTIC VOLCANICS**
- Basalt Flow (yellow)
- Flow Breccias - Androsite
- Flows - Resembling / with volcanic scoria
- Tuffs
- INTERMEDIATE - ANDERSITIC VOLCANIC**
- Andersitic Flows
- Mylon / Green Flow Breccias - Volcaniclastic
- Mylon / Green Epitaxial
- Debris Flow mixed tuffs / sediments with mafic, felsic and sediment fragments
- FELSIC VOLCANICS - DACITE / RHYOLITE**
- PP Debris Flows / Domes / Dikes
- PP Debris Flow Breccias Volcaniclastic
- Debris Tuffs
- Flow Banded Rhyolite
- Mixed Rhyolite Hyaloclastics
- Rhyolite Volcaniclastic
- Tuffs
- SEDIMENTS**
- Mudstone / Siltstone
- Shale / Argillite
- Wackes
- Clay
- Conglomerate
- Limestone
- INTRUSIVES**
- Pg / Hb Monzonite
- Diorite
- Lamprophyre

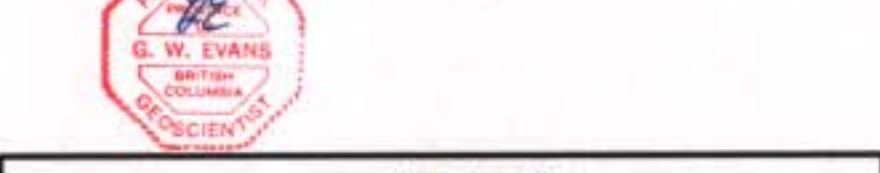
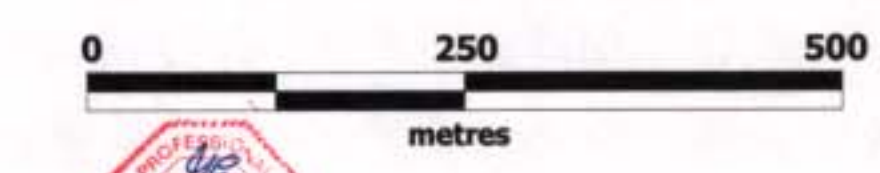


Teck Cominco Limited P.O. Box 508, Station Main, Kamloops, B.C. V2C 9E4		<b>teckcominco</b>	
<b>HOMESTAKE RIDGE PROJECT</b> KITSLULT AREA, British Columbia			
<b>SAMPLE LOCATIONS</b>			
SOUTH SHEET			
SCALE: 1:5000	DATA BY: G. Evans	MTS No: 25P-072,073	Figure: <b>11</b>
DATE: DEC 13, 2001	DRAWN BY: S.A.D.C.	CHK: [Signature]	





- MAFIC BASALTIC VOLCANICS**
  - Basalt Flows (yellow)
  - Flow Breccias - Andesitic
  - Flows - Reseminated / with volcanic scoriae
  - Tuffs
- INTERMEDIATE - ANDESITIC VOLCANIC**
  - Andesite Flows
  - Magma / Green Flow Breccias - Volcanoclastic
  - Magma / Green Epitaxial
  - Dacite Flow mixed tuffs / sediments with mafic, felsic and sediment fragments
- FELSIC VOLCANICS - DACITE / RHYOLITE**
  - PP Dacite Flows / Domes / Dikes
  - PP Dacite Flow Breccias Volcanoclastic
  - Dacite Tuffs
  - Flow Banded Rhyolite
  - Mixed Rhyolite Hyaloclastics
  - Rhyolite Volcanoclastic
- SEDIMENTARY**
  - Tuffs
  - Mudstone / Siltstone
  - Shale / Argillite
  - Wacke
  - Clay
  - Conglomerate
  - Limestone
- INTRUSIVES**
  - Py / Hg Monzonite
  - Orthogneiss
  - Diorite
  - Lamprophyre
  - Epithermal Veins and Massive Sulphides
  - Stockwork Sulphides
  - Disseminated Sulphides
- ALTERATION**
  - Perseus Epidote Alteration
  - Perseus Epidote Alteration (+/- silification)
  - Perseus Chlorite/Calcite (+/- sericite +/-)
  - Perseus Silification
  - Perseus Carbonate Alteration



Teck Cominco Limited  
P.O. Box 200, Kitsoyuk  
Harrison, B.C. V2C 9K4

**teckcominco**

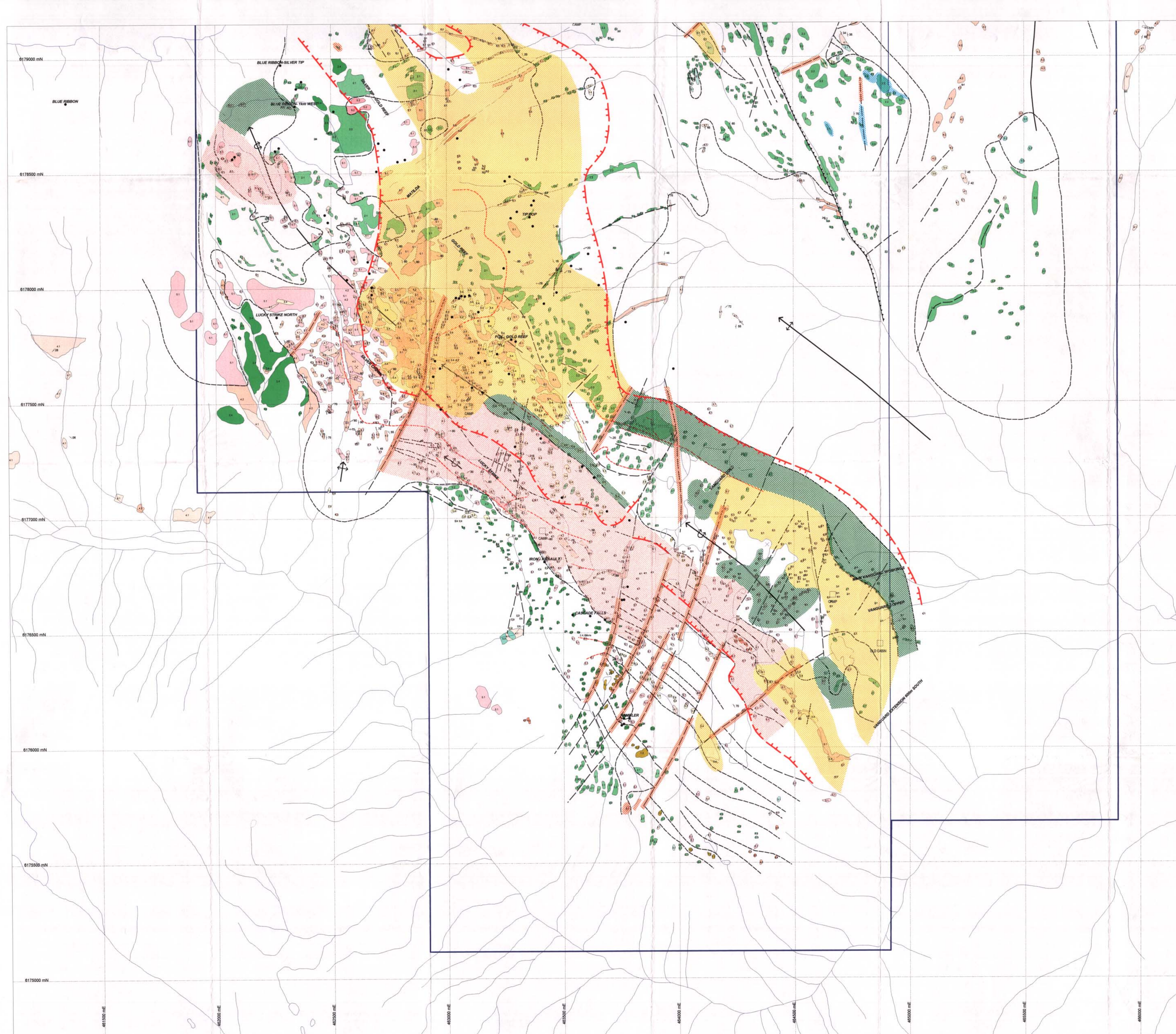
**HOMESTEAD RIDGE PROJECT**  
KITSOYUK AREA, British Columbia

**PROPERTY ALTERATION  
and MINERALIZATION**

NORTH SHEET

SCALE: 1:5000 DATA BY: G. Evans HTS No. 382P-072,373  
DATE: DEC 17, 2011 DRAWN BY: S.A.D.D. DWG: 12

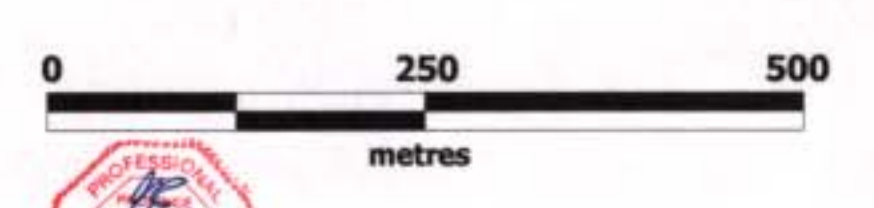




GEOLOGICAL SURVEY BRANCH  
ASSESSMENT REPORT

26,719

- MAFIC-BASALTIC VOLCANICS**
- Basalt Flow (Green)
- Flow Breccia - Andesitic
- Flow - Residualized / with volcanic necks
- Tuff
- INTERMEDIATE - ANDESITIC VOLCANIC**
- Andesite Flow
- Mesa / Green Flow Breccia - Volcaniclastic
- Mesa / Green Epithermal
- Delta Flow mixed tuff / sediments with mafic, felsic and sediment fragments
- FELSIC VOLCANIC - DACITE / RHYOLITE**
- FP Delta Flow / Dome / Dome
- FP Delta Flow Breccia Volcaniclastic
- Delta Tuff
- Flow Banded Rhyolite
- Mesa Rhyolite Volcaniclastic
- Rhyolite Volcaniclastic
- Tuff
- SEDIMENTS**
- Mudstone / Siltstone
- Shale / Argillite
- Wash
- Clay
- Conglomerate
- Limestone
- INTRUSIVES**
- Py / B-Monzonite
- Granodiorite
- Diorite
- Lampophyre
- Sulphide Veins and Massive Sulphides
- Stockwork Sulphides
- Disseminated Sulphides
- ALTERATION**
- Perovskite Epidote Alteration
- Perovskite Sericite Alteration (+/- silification)
- Perovskite Chlorite/Calcite (+/- sericite aff.)
- Perovskite Silification
- Perovskite Carbonate Alteration



Teck Cominco Limited  
P.O. Box 500, Stn. Main,  
Vancouver, B.C. V6C 3K4

**teckcominco**

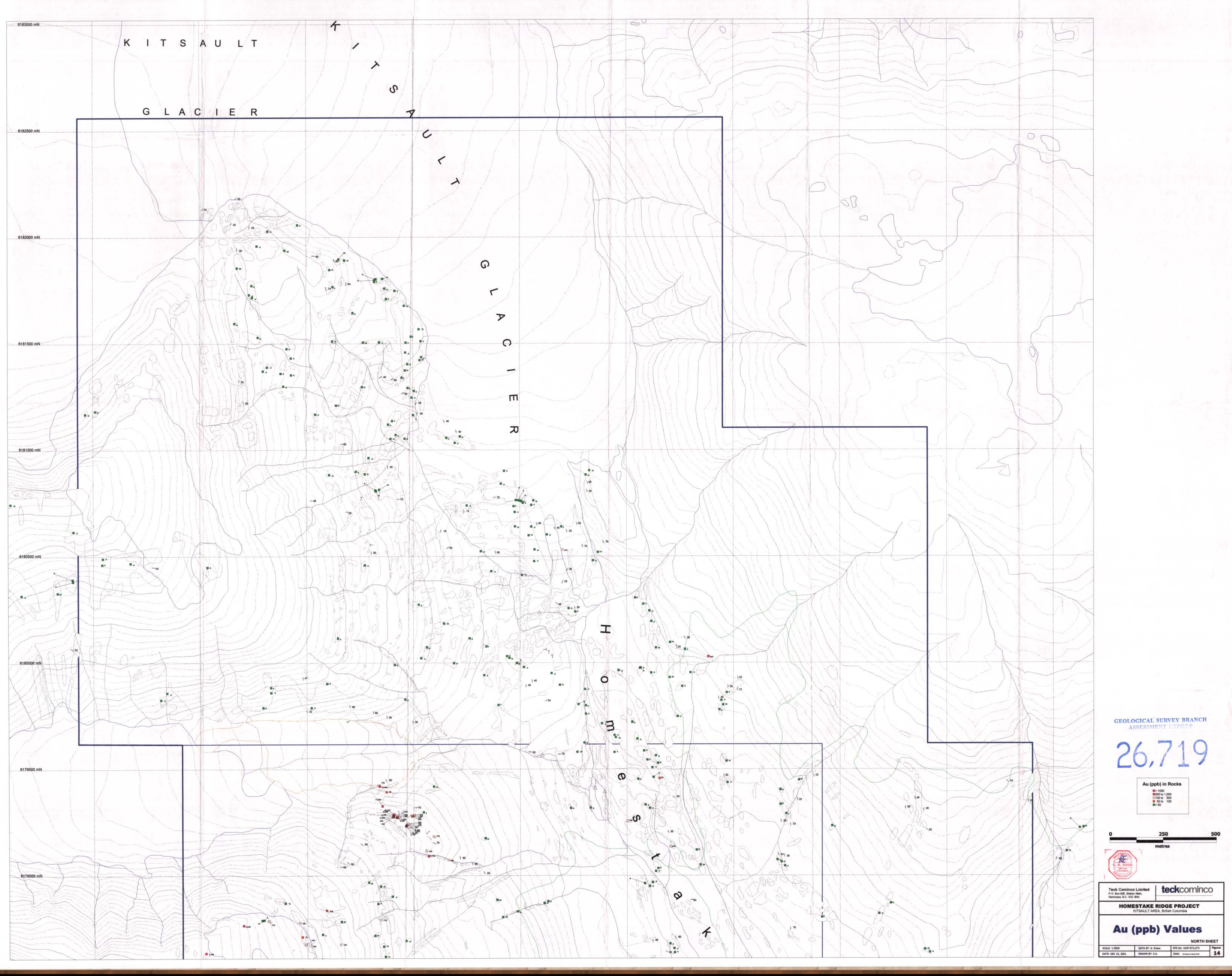
**HOMESTAKE RIDGE PROJECT**  
KITLAULT AREA, British Columbia

**PROPERTY ALTERATION  
AND MINERALIZATION**

SOUTH SHEET

SCALE: 1:5000    DATA BY: G. Ewert    WTS No. 338P-072,073  
DATE: DEC 17, 2001    DRAWN BY: S.A.B.D.    DATE:    Figure 13



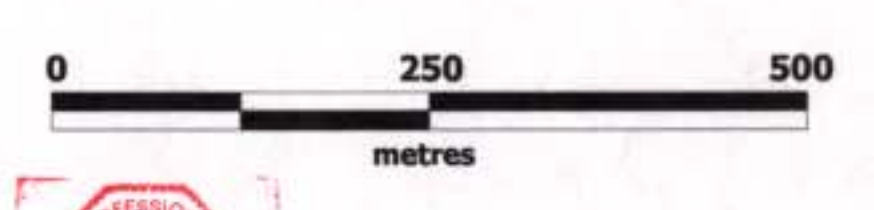


GEOLOGICAL SURVEY BRANCH  
ASSESSMENT REPORT

26,719

Au (ppb) in Rocks

- > 1000
- 500 to 1000
- 100 to 500
- 50 to 100
- < 50



Teck Cominco Limited  
P.O. Box 208, Station Main,  
Fernie, B.C. V2C 3E4

**teckcominco**

**HOMESTAKE RIDGE PROJECT**  
KITSULT AREA, British Columbia

**Au (ppb) Values**

SCALE: 1:5000    DATA BY: G. Davis    WTS No: 102P-012013    Figure  
DATE: DEC 15, 2001    DRAWN BY: S.A.    DWG:    **14**