

RECEIVED

JUL 10 2003

Gold Commissioner's Office
VANCOUVER, B.C.

**Saxony Explorations Ltd
Exploration 2002**

Hoodoo 1 & 2; Lancer 2; and Saffron 2, 4 & 5 Mineral Claims

Knight Inlet Area
Vancouver Mining District
British Columbia

51° 20' North Latitude, 123° 30' West Longitude
NTS 92N 5E & 6W

**Operator
Saxony Explorations Ltd**

**Owner
Ben Ainsworth**

**GEOLOGICAL SURVEY BRANCH
ASSESSMENT REPORT**

27,198

Saxony Explorations Ltd
Exploration 2002
Hoodoo 1 to 4, Lancers 1 & 2; and Saffron 1 to 5 Mineral Claims
 Knight Inlet Area
 Vancouver Mining District
 British Columbia
 51° 20' North Latitude, 123° 30' West Longitude
 NTS 92N 5 & 6

Table of contents

	Page
Summary	iii
Introduction and Terms of Reference	1
Property and Location	1
Access, Climate, Infrastructure and Topography	1
Ownership and Property History	3
Geology	
Regional Geology	5
Exploration	
Previous Exploration	5
Exploration 2002	
Discussion	5
References	6
Certificate	8
Tables	9
Table I Property	
Table II Previous Exploration	
Table III Sample Results, October 30 to November 2, 2002.	
Table IV Cost Statement	

Table of contents
(continued)

Drawings

Drawing

1RTNov02	Location, Redbreast Project.	2
2RTNov02	Location & Regional Geology; Hoodoo, Lancer and Saffron Mineral Claims,	4
3RTNov02	Sampling, U88HMTR34 Area, Lancer 2 Mineral Claim.	16
4RTNov02	Geology & Sampling, Trench 1 & 2, Lancer 2 Mineral Claim.	17
5RTNov02	Sampling, Saffron Creek Area, Saffron 2, 4 & 5 Mineral Claims.	18
6RTNov02	Geology & Sampling, Discovery Occurrence, Saffron 4 & 5 Mineral Claims.	19
7RTNov02	Geology & Sampling, Sample #89654 Area, Saffron 4 Mineral Claim.	20
8RTNov02	Sampling, Darlene Occurrence Area, Hoodoo 1 & Mineral Claims.	21

Appendices

Appendix

I	Assay Certificate, Acme Analytical Laboratories Ltd	23
---	---	----

Saxony Explorations Ltd
Exploration 2002
Hoodoo 1 & 2, Lancers 2; and Saffron 2,4 & 5 Mineral Claims
Knight Inlet Area
Vancouver Mining District
British Columbia
51° 20' North Latitude, 123° 30' West Longitude
NTS 92N 5E & 6W

Summary

This report reviews results of sampling of selected occurrences within Hoodoo 1 to 4, Lancers 1 & 2 and Saffron 1 to 5 mineral claims.

This report was prepared at the request of Mr. Adrian F.C. Hobkirk, Saxony Explorations Ltd.

The properties comprise three non-contiguous claim blocks totalling 207 units. The owner of the claims as shown in records of the Vancouver Mining Recorder is Benjamin Ainsworth. The properties are held in trust by B. Ainsworth for Metamin Enterprises Inc. and Dauntless Developments Ltd.

The properties are within the Coast Range mountains of British Columbia and are centered near 51 degrees 20 minutes North latitude 125 degrees 30 minutes West longitude; the properties are within NTS 92N 5 and 6.

The properties are accessible by helicopter from Campbell River, 150 kilometres southerly. Supplies; scheduled air and truck service; and charter aircraft and barge service are available at Campbell River. A dirt strip exists at Canfor logging camp at the northern end of Knight Inlet. Logging roads extend from tidewater at Knight Inlet to within 2.5 kilometres of Hoodoo 3 mineral claim and to within thirteen kilometres of Saffron 3 mineral claim.

Elevation at the properties ranges up to 2320 metres and relief ranges up to 1680 metres. The properties are partly covered in: timber; alpine vegetation; talus and outcrop; and icefield and glacier. The glaciers and icefields in the area have retreated substantially since previous exploration was performed.

The properties are within Coast Plutonic Complex; this complex comprises gneiss, schist, migmatites and amphibolite of uncertain age and granitic intrusives of Jurassic to Tertiary age. The properties straddle a northwesterly trending belt of granitic intrusive, volcanics, intrusive breccias; and dykes of felsic to intermediate composition of Tertiary age.

Previous exploration in mineral claims now covered by the properties has comprised; prospecting, geochemical soil, stream sediment and rock sampling; geophysical magnetic and very low frequency electromagnetic surveying; core drilling comprising 2259 metres in twenty one holes; and geological evaluation.

Previous exploration within the area now covered by Hoodoo 1 to 4 mineral claims has discovered: pyrite, chalcopyrite, sphalerite and molybdenite mineralisation in outcrop and in float. This exploration discovered: float rock samples containing up to 15.5 grams per tonne (g/t) gold; and twenty eight rock samples containing more than one hundred parts per billion gold.

Previous exploration within the area now covered by Lancers 1 & 2 mineral claims has discovered : selected samples of felsic dike containing up to 56.6 g/t gold (1.65 ounces per ton, oz/st gold) and 32,513.1 g/t silver (948.3 oz/st silver); and eleven rock samples containing greater than 0.1 g/t gold.

Previous exploration within the area now covered by Saffron 1 to 5 mineral claims has discovered: gold mineralisation within sheared andesite containing 11.0 g/t gold (0.32 oz/st gold) over a width of two metres and sheared felsic dyke containing 84.7 g/t gold (2.47 oz/st gold) over a width of two metres; sheared quartz veins mineralised with molybdenite containing up to 0.33% molybdenum over eight centimetres; and forty three rock samples with greater than 0.1 g/t gold.

The Hoodoo 1 to 4, Lancers 1 & 2 and Saffron 1 to 5 mineral claims have features characteristic of high level volcanic hosted epithermal gold districts including: quartz monzonitic intrusions, quartz porphyry bodies and intrusive breccias of Tertiary age; and numerous gold occurrences. The properties are prospective for high grade gold and silver epithermal deposits and for porphyry copper, molybdenum and gold deposits. Further exploration of the properties is warranted.

Exploration during 2002 comprised trenching and rock sampling to re-establish in the field and evaluate selected gold mineralised occurrences identified by previous exploration. Rock sampling was performed at Hoodoo 1, Lancer 2, and Saffron 2, 4 and 5 mineral claims; comprising thirty one samples with analysis for gold and silver by fire assay and a twenty one element suite utilizing induction coupled plasma methods.

At Lancer 2 mineral claim rock chip samples contained up to 0.06 grams per tonne (g/t) gold and 7.9 g/t silver over 1.31 metres; at Saffron mineral claims rock chip samples contained up to 12.41 g/t gold and 7.1 g/t silver from a grab chip of limonitic granodiorite; at Hoodoo 1 mineral claim chip samples contained up to 1.69 g/t gold and 5.9 g/t silver in white vuggy quartz vein float.

Saxony Explorations Ltd
Hoodoo 1 & 2, Lancers 2; and Saffron 2,4 & 5 Mineral Claims
Knight Inlet Area
Vancouver Mining District
British Columbia
51° 20' North Latitude, 123° 30' West Longitude
NTS 92N 5E & 6W

Introduction and Terms of Reference

This report presents results of rock sampling and geological evaluation of selected previously discovered occurrences within Hoodoo 1 & 2, Lancer 2; and saffron 2, 4 & 5 mineral claims.

This report is based upon a personal visit to the properties from 29 October to 2 November 2002 and upon a review of published and unpublished exploration data. This report was prepared at the request of Mr Adrian F. C. Hobkirk, President & C.E.O. Saxony Explorations Ltd, Vancouver.

Property and Location

The properties are centred near 51 degrees 20 minutes north latitude, 125 degrees 30 minutes west longitude, (Dwg 1 RT02). Hoodoo 1 to 4 mineral claims are within NTS 92N05E and 092N06W and Lancers 1 & 2 mineral claims and Saffron 1 to 5 mineral claims are within NTS 092N06W.

The properties are about thirty kilometres northerly from tidewater at the head of Knight Inlet; Campbell River, the closest major town, is 150 kilometres southerly.

The properties comprise 207 claim units in three separate non contiguous claim blocks; location of the properties are shown on drawing 2 RT02 and details are included in Table I; all of the mineral claims are four post claims.

Legal corner post locations were surveyed utilizing differential global positioning system procedures by T. Young, Donegal Developments Ltd at the same time as the claims were staked, (Young, 2001).

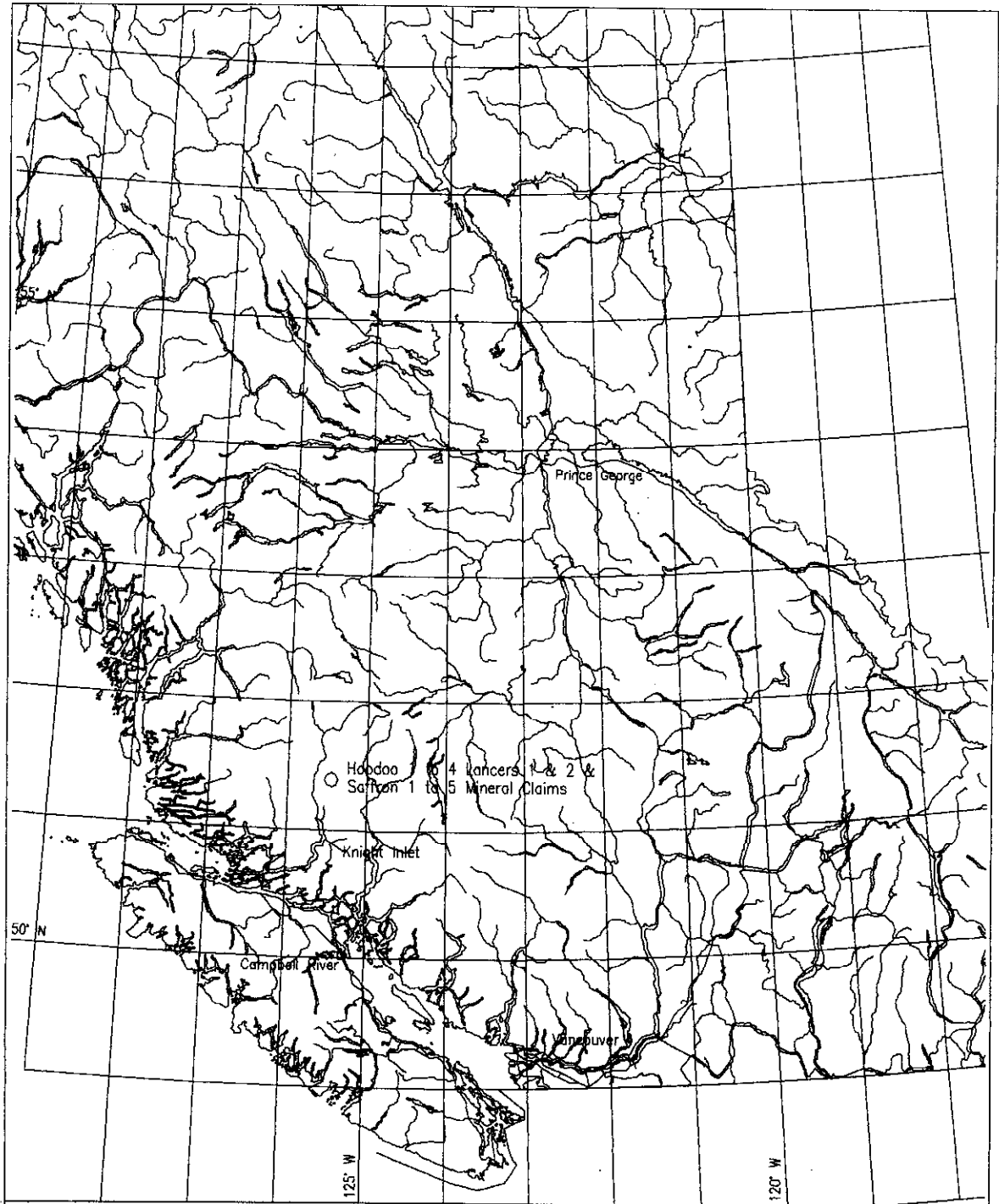
Access, Climate, Infrastructure and Topography

The properties are accessible by helicopter from Campbell River, Vancouver Island, 150 kilometres southerly (Dwg 2RT01).

A logging road extends from Interfor Limited logging camp on tidewater at the northern end of Knight Inlet along the south side of Hoodoo Creek to within 2.5 kilometres from the south-western corner of Hoodoo 3 mineral claim; a logging road extends up Franklin River valley to within thirteen kilometres of the south-western margin of Saffron 3 mineral claim, (Dwg 2RT02).

Interfor Limited logging camp at the head of Knight Inlet is accessible by wheel and float equipped aircraft from Campbell River. Fuel and supplies; scheduled air service; bus and truck service; and fixed wing and helicopter aircraft charter service are available at Campbell River.

Elevation on the properties ranges up to 2320 metres on the northern margin of Saffron mineral claims; relief ranges from 1220 metres on Lancers 1 & 2 mineral claims to 1680 metres on Hoodoo 1 to 4 mineral claims. Total precipitation is estimated to be 150 centimetres per year; snowfall is estimated to be 500 centimetres per year at the one thousand metre elevation.

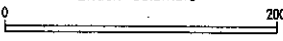


Saxony Explorations Ltd

Location

Hoodoo 1 to 4; Lancers 1 & 2;
& Saffron 1 to 5 Mineral Claims

NTS 92N 5E & 6W
Vancouver Mining District
British Columbia

Scale 0  200 Km

Beckett & Associates

Vancouver, B.C.

August 2002

Dwg 1RT02

Parts of Hoodoo, Lancers and Saffron mineral claims below about 1700 metres elevation are timber covered; areas above about 1700 metres are underlain by alpine vegetation, talus and outcrop; parts of Hoodoo, Lancers and Saffron mineral claims are underlain by icefields or glaciers. The margins of the icefields and glaciers in the area have retreated substantially from the position shown on the most recent published topographic maps; this opens up significant new area for exploration.

Ownership and Property History

Hoodoo 1 to 4, Lancers 1 & 2; and Saffron 1 to 5 mineral claims, according to claim ownership records at British Columbia Ministry of Energy and Mines, are held by Benjamin Ainsworth. The properties are held in trust by B. Ainsworth for Metamin Enterprises Inc. and Dauntless Developments Ltd, (Ainsworth, 2002).

Saxony Explorations Ltd. has entered into an option agreement with Dauntless Developments Ltd. and Metamin Enterprises Inc. to acquire up to a 100 per cent interest in Hoodoo 1 to 4, Lancers 1 & 2 and Saffron 1 to 5 mineral claims subject to certain terms, (Hobkirk, 2002).

Previous exploration within the area now covered by the properties is summarised in Beckett (2002) and in Table II; no other claims exist within the immediate area of the properties.

Exploration 2002

Exploration in 2002 comprised re-establishment, trenching and re-sampling of selected previously discovered mineral occurrences within Hoodoo 1 and 2, Lancer 2 and Saffron 2, 4 & 5 mineral claims. Detailed results of 2002 exploration are included in Table III and sample locations and geology are shown on drawings 3RTNov02, 4RTNov02, 5RTNov02, 6RTNov02 and 7RTNov02; and the analytical certificate is included in Appendix I.

Field work was performed between 29 October and 2 November 2002. Expenditures are included in Table IV.

Sampling comprised thirty one rock chip samples; analysis utilised four acid digestion, one gram, twenty element ICP-ES and three assay tonne fire assay for gold and silver.

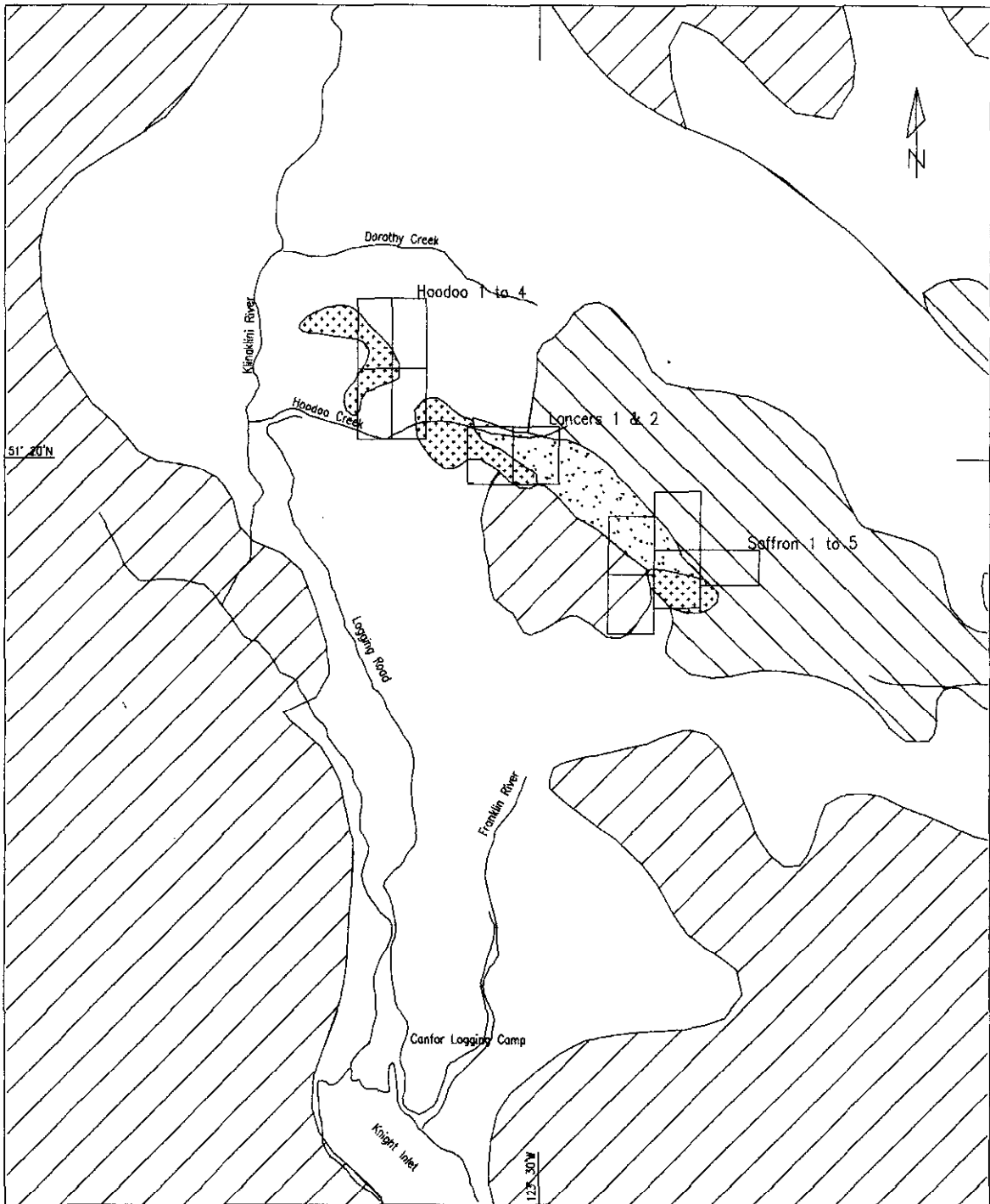
Sample location coordinates were determined utilising a Garmin eTrex global positioning system unit; universal transverse mercator (UTM) coordinates shown on drawings 3 RTNov02 to 8RTNov02 utilise NAD27 datum. Sample locations were marked by paint and aluminum tags.

Snow cover prevented detailed examination of occurrences at Hoodoo 1 and 2 mineral claim areas.

Geology

Regional Geology

The properties are underlain by metamorphic rocks, plutonic rocks; and volcanic flows, breccia and dykes of Jurassic to Tertiary age, (Tipper et al, 1981); regional geology of the properties is shown on drawing 2 RTNov02. The metamorphic rocks comprise gneiss, migmatite, amphibolite and schist of uncertain age; plutonic rocks comprise intrusions of granitic to intermediate composition. Intrusive and extrusive rocks of Tertiary age exist within a northwesterly trending belt over about twenty two kilometres and up to three kilometres wide; these rocks comprise felsic intrusives; felsic to intermediate stocks and dykes; quartz feldspar porphyry sills and tuffs; and breccia, agglomerates and flows. The properties cover part of this belt of Tertiary rocks.



Legend	
Geology	Age uncertain
Tertiary	□ Gneiss, schist & amphibolite
<ul style="list-style-type: none"> ▨ Volcanic, flows, tuff & breccia ▩ Intrusive, quartz monzonite. ▧ Intrusive; granodiorite, diorite. Cretaceous ▦ Intrusive; granodiorite, diorite. 	Symbols — Road □ Mineral claim boundary
	Note Geology after: Tipper et al, 1981.

Saxony Explorations Ltd.

Location & Regional Geology
 Hoodoo 1 to 4, Lancers 1 & 2
 & Saffron 1 to 5 Mineral Claims

NTS 92N 5 & 6
 Vancouver Mining District
 British Columbia

Scale 0 — 10 Km

Beckett & Associates
 Vancouver, B.C. August 2002

Exploration

Previous Exploration

Details of previous exploration, within and adjacent to areas now covered by the properties are included in Beckett (2002) and summarised in Table II.

Exploration 2002

Lancer 2

Trenching and rock chip sampling was performed to evaluate previously trenched occurrence U88HMTR34 reported to contain 32,513 grams per tonne silver and 56.57 grams per tonne gold in a grab sample (Twyman and Forgeron, 1988).

Trench locations, chip sample results and sample geology are shown on drawings 3RTNov02 and 4RTNov02 and sample details are included in Table III.

Saffron 2, 4 & 5 Mineral Claims

Trenching and rock chip sampling was performed to evaluate results obtained previously at: sample #89507 reported to contain 126.5 g/t gold and 44.6 g/t silver in a grab sample; sample #89654 reported to contain 84.7 g/t gold and 51.4 g/t silver over two metres, (Twyman and Forgeron, 1988); at Discovery Occurrence containing 10.9 g/t gold and 37.4 g/t silver over two metres in Trench 1 and 10.53 g/t gold, 22.6 g/t silver and 2.85 per cent copper over two metres in Trench 2, (Twyman and Forgeron, 1988).

Trench locations, rock chip sample results and sample geology is shown on drawings 3RTNov02, 4RTNov02, 5RTNov02, 6RTNov02 and 7RTNov02 and detailed are included in Table III.

Limited prospecting and sampling was performed on limonitic weathered outcrops in Saffron Creek area.

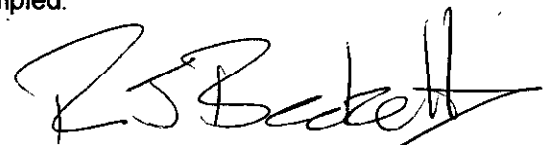
Hoodoo 1 & 2 Mineral Claim

Limited prospecting and rock chip sampling to evaluate previously discovered gold mineralised float and bedrock occurrences containing up to 15.53 g/t gold and 96.9 g/t silver in sample DY RX-10, (Bruland, 1993; Sibbald & Delany, 1993). Extensive snow cover prevented examination of most occurrences including Darlene occurrence.

Sample locations and chip sample locations of 2002 and previous exploration are shown on drawing 8RTNov02 and sample details are included in Table II.

Discussion

No sample sites from 1988 exploration were specifically identified by labelled tags, painted numbers or flagging. Trenches were found close to the probable locations of #U88UHMTR34, #89654 and Discovery Occurrence as shown on maps in Twyman and Forgeron, 1988 and the sites sampled are believed to be the locations previously sampled.



Robert J. Beckett, P. Geo.
30 November 2002

References

- Ainsworth B. 2002 Ownership of Hoodoo 1 to 4, Lancers 1 & 2 and Saffron 1 to 5 Mineral Claims; personal communication.
- Beckett R.J. 2002 Summary Report, Hoodoo 1 to 4; Lancer 1 & 2; and Saffron 1 to 5 Mineral Claims; unpublished report for Saxony Exploration Ltd.
- Brookes C. 1997 Knight Inlet B.C. Claims Optioned, Goldzone Explorations Inc.; reported in George Cross Newsletter #66, p3.
- Bruland T. 1993 Assessment Report, Dorothy Mineral Group; Assessment Report #23051, British Columbia Ministry of Energy and Mines.
- Deighton J.R. 1979 Diamond Drilling, Geological, Geochemical Report BZT Claims; report for BHP-Utah Mines, Assessment Report #08218, British Columbia Ministry of Energy and Mines.
- Deighton J.R. 1980 1979 Report on the Geology, Geochemistry and Diamond Drilling of the BZT Claims, Hoodoo Creek; unpublished report for Utah Mines Ltd.
- Deighton J.R. 1980 Assessment Report on the Diamond Drilling of the BZT Claims, Hoodoo Creek; report prepared for Utah Mines Ltd; Assessment Report #09377, British Columbia Ministry of Energy and Mines..
- Deighton J.R. 1996 Compilation Report on the KLN Claims; unpublished report prepared for F. Onucki..
- Elwell P. 1979 Report on the Hoodoo Creek and Franklin Glacier Properties near Mount Waddington; unpublished report prepared for United Mineral Services Limited.
- Game B. & Baker D.G. 1997 Prospecting Report on the KLN Property; report prepared for F. Onucki; Assesment Report #25067, British Columbia Ministry of Energy and Mines.
- Garratt G.L. 1980 Geological and Geochemical Report of the Hoodoo Claims, report prepared for Energex Minerals Limited; Assessment Report #09508, British Columbia Ministry of Energy and Mines.
- Garratt G.L. 1981 Prospecting Report on Hoodoo & Hoodoo II Mineral Claims, report prepared for Energex Minerals Limited; Assessment Report #09710, British Columbia Ministry of Energy and Mines.
- Hobkirk A.F.C. 2002 Property Option July 30 2002; press release by Saxony Explorations Ltd., as reported on Sedar.
- Hodgson C.J. 1977 Topographical and Geochemical survey – Hoodoo Creek Property, report prepared for Amax Potash; Assessment Report #06819, British Columbia Ministry of Energy and Mines.
- Hodgson C.J. 1978 Geological, Geochemical Report BZT 1-9 Claims; report prepared for Amax Potash Corporation; Assessment Report #07415, British Columbia Ministry of Energy and Mines.

- Jackaman, W., Cook, S.J., Matysek, P. (1992) British Columbia Regional Geochemical Survey, - Mt Waddington (NTS 92N), BC Ministry of Energy and Mines and Petroleum Resources, RGS 34.
- Ney C. 1968 Geological and Geochemical Report on the Van Claims; report prepared for Kennco Explorations (Canada) Limited; Assessment Report #01668, British Columbia Ministry of Energy and Mines.
- Nichols B.M. 1988 Sample Results, Hannah Claims, United Pacific Gold Limited; reported in George Cross Newsletter #209, p2.
- Sawyer J.B.P. 1980 Geological, Geophysical and Geochemical Report on the 1980 Exploration Program on the Big Frank 1 and 2 Claims; report prepared for MacMillan Energy Corporation; Assessment Report #8744, British Columbia Ministry of Energy and Mines.
- Sibbick, S.J., Delaney, T.A. (1993) Investigation of Anomalous RGS Stream Sediment Sites in Central BC, (NTS 92N, O and P), in Geological Fieldwork 1992, BC, Ministry of Energy, Mines and Petroleum Resources, Paper 1993 - 1, pp. 451-461.
- Tipper, H.W., Woodsworth G.J. & Gabrielse H. 1981 Tectonic Assemblage Map of the Canadian Cordillera; Geological Survey of Canada, Map 1505A.
- Twyman M.P. & Forgeron F.D. 1988 An Assessment Report on the Geology and Gold Potential of the Hannah 1 to 11 Claims; report prepared for United Pacific Gold Limited, Assessment Report #18202, British Columbia Ministry of Energy and Mines.
- Young T. 2001 Global Positioning Report for Mineral Titles Saffron 1- 5, Hoodoo 1 - 4, Lancers 1 - 2; report by Donegal Developments Ltd prepared for Ainsworth Jenkins Holdings Inc.

Saxony Explorations Ltd
Exploration 2002
Hoodoo 1 to 2; Lancer 2; and Saffron 4 & 5 Mineral Claims

Certificate

I, Robert J. Beckett, P.Geo. of 633, Gibsons Way, Gibsons, British Columbia, am a Professional Geoscientist.

I am a member of the Association of Professional Engineers and Geoscientists of British Columbia. I graduated from Oxford University with a B. A. honours degree in geology in 1962 and I have practiced my profession continuously since 1962.

Since 1962 I have been involved in mineral exploration for gold, copper, silver, uranium, lead and zinc in Canada, Mexico, central America and the United States of America.

This report is based upon a work conducted by RJ Beckett and MP Twyman between 29 October 2002 and 2 November 2002 and a review of published and unpublished data.

I have no interest, direct or indirect, in Saxony Explorations Ltd or their properties.

Dated at Gibsons, British Columbia, 30 November 2002

Robert J. Beckett, P.Geo.

Saxony Explorations Ltd
Exploration 2002
Hoodoo 1 to 2; Lancer 2; and Saffron 4 & 5 Mineral Claims
Knight Inlet Area
Vancouver Mining District
British Columbia
51° 20' North Latitude, 123° 30' West Longitude
NTS 92N 5 & 6

Tables

Tables

Table I	Property
Table II	Previous Exploration
Table III	Sample Results, October 30 to November 2, 2002.
Table IV	Cost Statement

Saxony Explorations Ltd.								Table I
Hoodoo 1 to 4, Lancers 1 & 2; & Saffron 1 to 5 Mineral Claims								
Property								
Tenure number	Claim Name	Owner	Percent ownership	Issue Date	Good Standing until	Claim units	Claim Tag Number	NTS Map Sheet
388210	HOODOO 1	B. Ainsworth	100	2001.07.16	2003.07.16	18	240442	092N05E
388211	HOODOO 2	B. Ainsworth	100	2001.07.16	2003.07.16	18	240443	092N05E
388212	HOODOO 3	B. Ainsworth	100	2001.07.16	2003.07.16	18	240444	092N05E
388213	HOODOO 4	B. Ainsworth	100	2001.07.16	2003.07.16	18	240445	092N05E
388214	LANCERS 1	B. Ainsworth	100	2001.07.16	2003.07.16	20	240758	092N05E
388215	LANCERS 2	B. Ainsworth	100	2001.07.16	2003.07.16	20	240441	092N05E
388216	SAFFRON 1	B. Ainsworth	100	2001.07.16	2003.07.15	20	240908	092N06W
388217	SAFFRON 2	B. Ainsworth	100	2001.07.16	2003.07.16	20	240909	092N06W
388218	SAFFRON 3	B. Ainsworth	100	2001.07.16	2003.07.15	20	240910	092N06W
388219	SAFFRON 4	B. Ainsworth	100	2001.07.16	2003.07.16	20	240911	092N06W
388220	SAFFRON 5	B. Ainsworth	100	2001.07.16	2003.07.16	15	240912	092N06W
Total units						207		

Saxony Explorations Ltd

Table II

**Hoodoo 1 to 4, Lancers 1 & 2; and Saffron 1 to 5 Mineral Claims
Previous Exploration**

Years Worked	Claim Name	Company or Owner	Data Source	Type of Work
Hoodoo 1 to 4 Mineral Claim Area				
1968	Van	Kennco Explorations (Western) Limited	Ney, 1968	Prospecting, rock & soil geochemical sampling;
1979 to 1980	BZT	Amax Potash Corp, Utah Mines Ltd.	Hodgson, 1977,1978; Deighton, 1979.	Prospecting, geological mapping, geochemical soil and rock sampling, core drilling; drilling comprised 1834.9 metres in 7 holes. Discoveries included: Molybdenite & chalcopyrite in breccia body; pyrite, chalcopyrite, spalerite & molybdenite mineralised quartz veins; rock
1992	Dorothy Creek area	BCMEX	Sibbick & Delaney, 1992	Geochemical stream sediment sampling, prospecting & geological evaluation to test anomalous stream sediment samples in creeks draining southerly into Dorothy Creek. BCMEX discovered float mineralised with sphalerite, chalcopyrite and galena; Darlene occurrence; and rock samples with up to 15.5 g/t gold.
1993	Dorothy, Glacier, Snow	Teck Exploration Ltd	Bruland, 1993	Prospecting, geochemical rock sampling; geophysical magnetic surveying; & geological evaluation. Numerous float boulders mineralised with pyrite, sphalerite, chalcopyrite and galena discovered with gold content up to 1.8 g/t gold.
Lancers 1 & 2 Mineral Claim Area				
1980, 1980	Hoodoo	Diex JV; Energex Minerals Limited	Garratt 1980, 1981	Prospecting, geochemical soil surveying, rock sampling and geological evaluation; quartz veins and gossans discovered with gold values up to 1.1 g/t gold.
1988	Hoodoo	United Pacific Gold Limited	Twyman & Forgeron, 1988	Prospecting, trenching, rock sampling & geological evaluation. Selected samples contained up to 56.6g/t gold & 32,513 g/t silver on a ridge northeast of Lancers Mountain.
1997	KLN	Onucki F.	Game & Baker, 1997	Recce prospecting; no significant results.
Years Worked	Claim Name	Company or Owner	Data Source	Type of Work
Saffron 1 to 5 Mineral Claim Area				
1968	BHA	Kennco Explorations (Western) Limited	Sawyer, 1980	Prospecting, geochemical rock & soil sampling; and 192 metres of core drilling in seven holes. No results available.
1976	Hoodoo, Nunatuk, Franklin & Knight	United Mineral Services Limited	Elwell, 1976	Recce geological mapping
1980	Big Frank	MacMillan Energy Corporation	Sawyer, 1980	Geological mapping; geochemical rock, stream sediment and soil sampling; geophysical magnetic surveying. Comprising: rock channel samples 34; rock chip samples 30; geochemical soil samples 113; geophysical surveying 11.3 kilometres.
1988	Hannah	United Pacific Gold Ltd	Twyman & Forgeron, 1988	Geological mapping; geochemical rock, stream sediment and soil sampling; geophysical magnetic and VLF electromagnetic surveying; and core drilling. Comprising rock chip samples 123; 61 geochemical samples; 89 drill core samples; and 785 metres of drilling in nine holes; chip samples trenches at Discovery Zone contained up to 11.0 g/t gold over two metres. chip samples from a trench 350 metres southwesterly of Discovery Zone contained up to 84.7 g/t gold. Drilling to test Discovery Zone intersected up to 1.6 g/t gold, 1.1 % copper over 1.35 metres.
1997	Hannah	Goldzone Explorations Inc	Brookes, 1997	No work known.

Saxony Explorations Ltd.										
Redbreast Project, Knight Inlet BC										
Sampling, Exploration 2002										
Sample	Mineral	Location	UTM Coordinates		Description	Sample	Gold	Silver	Cu	Purpose
Number	Claim		East	North		Type	g/t	g/t	%	
144101	Lancer 2	Lancers northeast ridge; Trench 1; 0 - 0.50m;	325065	5689158	Granitic Gneiss; m green grey; m gr; friable; wk - mod foliated; qtz feld chlor; granitic gneiss.	Chip	<0.01	1.0	0.018	Re-establish location and re-sample grab sample 88HMTR34, 56.6 g/t gold, 32,513.1 g/t silver; (Twyman & Forgeron, 1988).
144102	Lancer 2	Trench 1; 0.50 - 1.90m	"	"	Silicified felsic dike; m - lt grey; fgr; hard; blocky fract; wkly foliated - streaky; 15% qtz phenocrsts, indistinct; <u>Min</u> 3% diss py, 1/2 - 1 mm grms; sparse lim cted frags; ct str 130/80N	Chip	<0.01	<0.3	0.005	"
144103	Lancer 2	Trench 1; 1.90 - 2.24m	"	"	Quartz vein / gouge; lt grey - brown; vfgr; friable; 30% 1 - 10mm frags qtz, 70% clay gouge.	Chip	0.02	3.8	0.007	"
144104	Lancer 2	Trench 1; 2.24 - 3.55m	"	"	Silicified dike; mgrey - white - lt brn; fgr; wkly foliated in pt; patchy qtz frags; mod friable mtrx; irreg 1/2 - 3 mm qtz strgs; sparse vugs; <u>Min</u> 1% py, 1 - 2 mm grms, irreg diss.	Chip	0.08	7.9	0.014	"
144105	Lancer 2	Trench 1; 3.55 - 4.60m; Dwg *****	"	"	Intermediate dike; dk grey; fgr; mass - felds porph; ct str 120/ ~vert	Chip	0.01	1.3	0.038	"
144106	Lancer 2	Trench 2; 0.0 - 0.60m			Granitic Gneiss; m green grey; mgr; friable; wk - mod foliated; qtz feld chlor, granitic gneiss.	Chip	<0.01	0.6	0.016	"
144107	Lancer 2	Trench 2; 0.60 - 1.60m			Silicified felsic dike; lt grey; fgr; ptly friable; siliceous; blocky; <u>Min</u> 1 - 2% diss py, sparse lim cted frags.	Chip	<0.01	0.9	0.031	"
144108	Lancer 2	Trench 2; 1.60 - 2.50m			Silicified felsic dike; lt grey; fgr; mass; occnl 3 - 10 mm qtz strgs; SE ct slickenside str 310/80N; <u>Min</u> 2% diss py; 1/2% black - dk blue cted sulph, tetrahedrite?	Chip	<0.01	0.5	0.007	"
144109	Lancer 2	Trench 2; 2.50 - 4.10m			As above	Chip	0.01	3.0	0.002	"
144110	Lancer 2	Trench 2; 4.10 - 5.10m			Qtz vn / gouge; lt grey - brn; vfgr; friable; 30% 1 - 10mm frags qtz, 70% clay gouge.	Chip	0.02	2.8	0.010	"
144111	Lancer 2	Trench 2; 5.10 - 6.00m			Intermediate dike; dk grey; fgr; mass - felds phenocrysts, 1% 1/2mm.	Chip	0.01	0.6	0.020	"
144112	Lancer 2	Lancers northeast ridge;	325046	5689126	Siliceous dike/vein; ltgry; fgr; silic; sparse qtz strgs.	Chip, 30cm	<0.01	<0.3	0.004	Test rusty weathering outcrop
144113	Lancer 2	Lancers northeast ridge;	325065	5689196	Siliceous dike/vein; ltgry; fgr; silic; sparse qtz strgs.	Chip, 1.0m	<0.01	1.2	0.001	Test rusty weathering outcrop
144114	Saffron 4	Trench 3; 0.0 - 0.80m	332344	5683669	Qtz sulph min intermediate dike; m gm gry; mgr; 5% 1/2 - 1mm felds, 3% hbl - chlor phenocrysts; int volc; <u>Min</u> mtrx 3% diss py; occnl lim - qtz - py strgs, 1- 2cm, 30% py, 3% cp, 1/2% black sulph; SW ct with qtz feld	Chip	1.36	10.3	0.281	Re-establish location and re-sample grab sample #89507, 126.5 g/t gold, 44.6 g/t silver; & 2 metre chip sample #89654, 84.7 g/t gold, 51.4 g/t silver; (Twyman & Forgeron, 1988).

Table III

Sample	Mineral	Location	UTM Coordinates		Description	Sample	Gold	Silver	Cu	Purpose
Number	Claim		East	North		Type	g/t	g/t	%	
					hbld felsic dike, ct str 340/sub vert; unmineralised.	Chip				
144115	Saffron 4	Trench 3; 0.80 - 1.90m	"	"	m gry bm; mgr; mass; qtz - felds - biot int intrusive; irreg lim ctd strgs 3 - 7mm & blocky lim ctd fracts.	Chip	0.06	0.3	0.034	"
144116	Saffron 4	Trench 3; 1.90 - 2.00m	"	"	Limonitic qtz vein ; str 355/85S	Chip	0.65	0.9	0.062	"
144117	Saffron 4	Trench 3; 2.00 - 3.00m	"	"	Intermediate intrusive ; m blue gry; fgr; mass; sparse limonite ctd fracts.	Chip	0.01	<0.03	0.031	"
144118	Saffron 4		332347	5683640	Limonitic sheared granodiorite ; lt gry - mgry - bm - blk; strgly sheared; friable; irreg qtz strgs 1/2 - 1cm; vuggy; <u>Min</u> limonitic - wad, extends 5m southeasterly; vns str 323/sub vert;	Grab chip; over 1 x 3 m	12.41	7.0	0.042	"
144119	Saffron 4		331879	5685425	Limonite stringer ; 1 - 3 cm wide; str 035/sub vert; within Heterolithic breccia stock ; dk gm gy; fgr mtrx; heterolithic bx, frags 3mm - 20cm; frags with bleached selvage in pt; prominent rusty weath peak; <u>Min</u> 1/2 - 1% diss py.	Chip; 3 cm.	0.01	1.0	0.050	"
144120	Saffron 4		332089	5685509			0.02	1.1	0.025	"
144121	Saffron 4	Trench 2; 0 - 2.00m	332554	5683944	m blue gry; fgr; mass; wkly foliated; <u>Min</u> 5% diss & 1/2 - 2mm strgs py, subhedral; in pt lt gry; vfg; 10% relict felds phenocrsts.	Chip	0.54	5.3	0.137	Re-establish location and re-sample Discovery Zone; (Twyman & Forgeron, 1988).
144122	Saffron 4	Trench 2; 2.00 - 4.00m	"	"	lt gm gry; fgr; mass; 10% relict felds pheno; <u>Min</u> 3% diss py; occnl 1-3mm py & m - dk brn sphal strgs.	Chip	5.12	6.0	0.489	"
144123	Saffron 4	Trench 1; 0.0 - 2.00m			lt - mgrey; fgr; mass - wkly foliated; <u>Min</u> diss py 1/2 - 1mm; irreg strg py, sph, po.	Chip	3.50	2.4	0.046	"
144124	Saffron 4	Trench 1; 2.00 - 4.00m			as above; @ 2.6m 3cm lim strg, str 130/80S	Chip	0.36	0.5	0.104	"
144125	Saffron 4	Trench 1; 4.00 - 6.00m			as above; @4.0m 10 - 15cm m - dk brn; friable; limonite; fgr; sucrose qtz; <u>Min</u> py, subhedral, 1 - 3mm strg; str 150/80W; @4.6m <u>Min</u> 5% cgr py, 3% cp over 20cm.	Chip	0.30	2.1	0.288	"
144126	Saffron 4	Trench 1; 6.00 - 8.00m			as above; @ 6.2m <u>Min</u> 5% cgr py, 3% cp over 20cm; @ 7.9m wht - lt brn stiff clay gouge, str 105/75N.	Chip	2.28	9.3	1.508	"
144127	Saffron 4	Trench 4; 0 - 2.00m			0 - 1.8 lt gry; fgr; mass; siliceous; <u>Min</u> 2% diss py; patchy limonite, wad.	Chip	0.47	2.7	0.081	"
144128	Saffron 4	Trench 4; 2.00 - 4.00m			1.8 - 3.3 m bm; mgr; mod soft; lim & black wad ctd fracts; @ 1.8m wht clay 5cm str 125/62N	Chip	0.05	0.9	0.085	"
144129	Saffron 4	Trench 4; 4.00 - 6.00m			3.3 - 6.0 m blue gry; fgr; int volc; patchy strgs lim & wad; <u>Min</u> 2% py.	Chip	0.08	4.2	0.126	"
144130	Hoodoo 1				Limonitic weath qtz hbld schst/ skam; <u>Min</u> py, sphl; irreg over 1 x 1m.	Select; 1m	0.05	4.6	0.027	
144131	Hoodoo 2		319367	5694997	White vuggy quartz vein ; mgr; mass; vuggy 1 - 3mm; sucrose; sparse float bldrs over 20 x 20m; base of rusty weath cliffs.	Select; float.	1.69	5.9	0.004	

Table II

Saxony Explorations Ltd.

Redbreast Project

Sampling Program 29 October 2 November 2002

Expenditures

Personnel

RJ Beckett
6 1/2 days @ \$450 per day plus GST plus field
& travel expenses Vancouver - Campbell River
return. 3,795.74

MP Twyman
7 days @ \$457 per day plus GST plus field &
travel expenses Vancouver - Campbell River
return . 3,630.63

Accommodation

Wahkash Contracting Ltd, Knight Inlet
12 man days @ \$65/day + GST 834.60

Transportation

Vancouver Island Helicopters Ltd
Campbell River -Wahkash Camp, Knight Inlet
1.9 hours
Wahkash Camp - property & on property
5 days, minimum 2 hours per day 12,406.79

Assays & analyses

Acme Analytical Laboratories Ltd
Thirty one rock samples, assay gold and
silver, 21 element ICP @ \$37.25 per sample +
GST 1,235.58

Report preparation

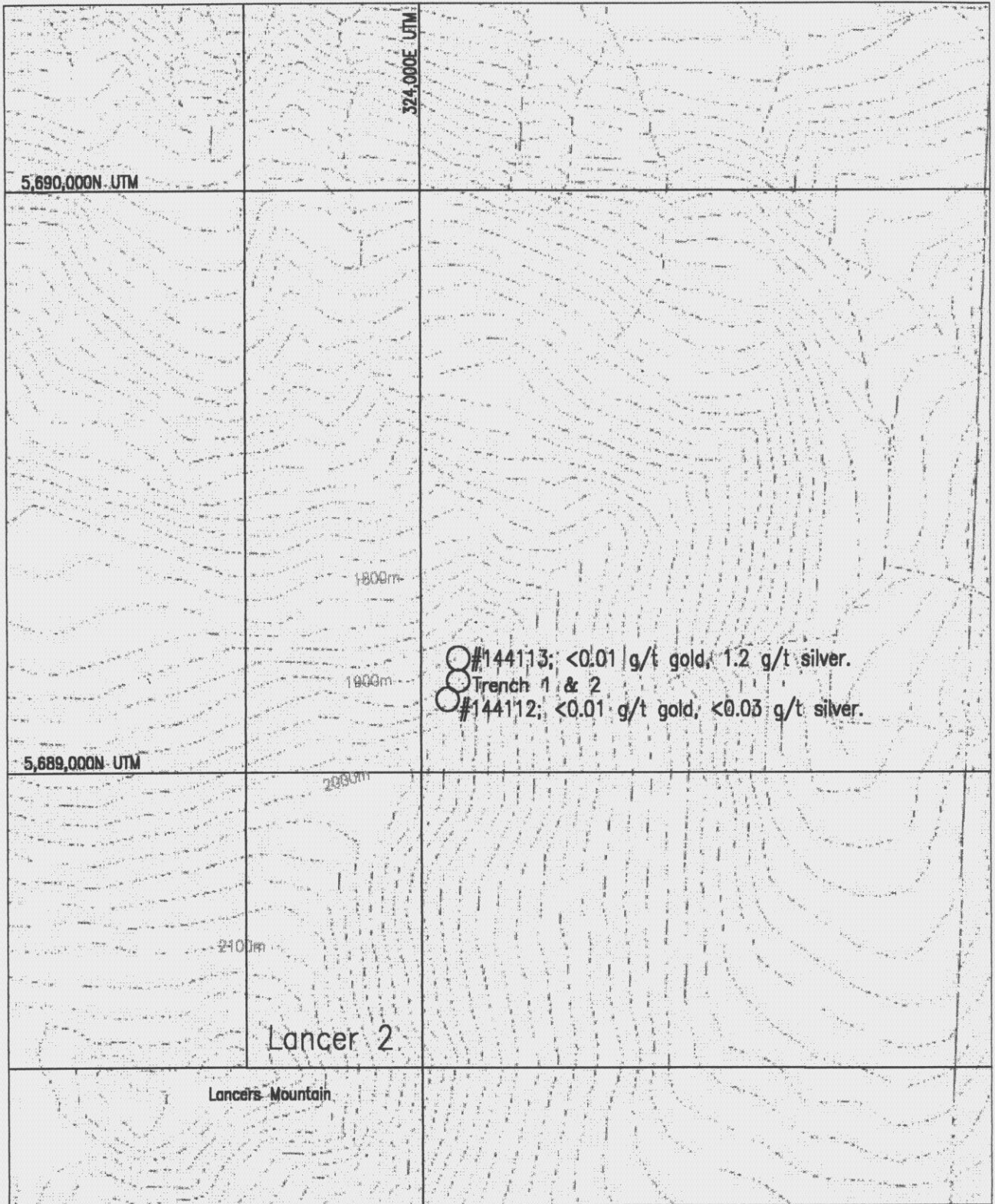
2 days @ \$500 per day 1,000.00

Total 22,903.34

Saxony Explorations Ltd
Exploration 2002
Hoodoo 1 to 2; Lancer 2; and Saffron 4 & 5 Mineral Claims
Knight Inlet Area
Vancouver Mining District
British Columbia
51° 20' North Latitude, 123° 30' West Longitude
NTS 92N 5 & 6

Drawings

3RTNov02	Sampling, U88HMTR34 Area, Lancer 2 Mineral Claim.
4RTNov02	Geology & Sampling, Trench 1 & 2, Lancer 2 Mineral Claim.
5RTNov02	Sampling, Saffron Creek Area, Saffron 2, 4 & 5 Mineral Claims.
6RTNov02	Geology & Sampling, Discovery Occurrence, Saffron 4 & 5 Mineral Claims.
7RTNov02	Geology & Sampling, Sample #89654 Area, Saffron 4 Mineral Claim
8RTNov02	Sampling, Darlene Occurrence Area, Hoodoo 1 & Mineral Claims.



Legend

○ #144113, <0.01, 1.2 Sample location, number, gold g/t, silver g/t.

 Lancer 2 Mineral claim; boundary, name.

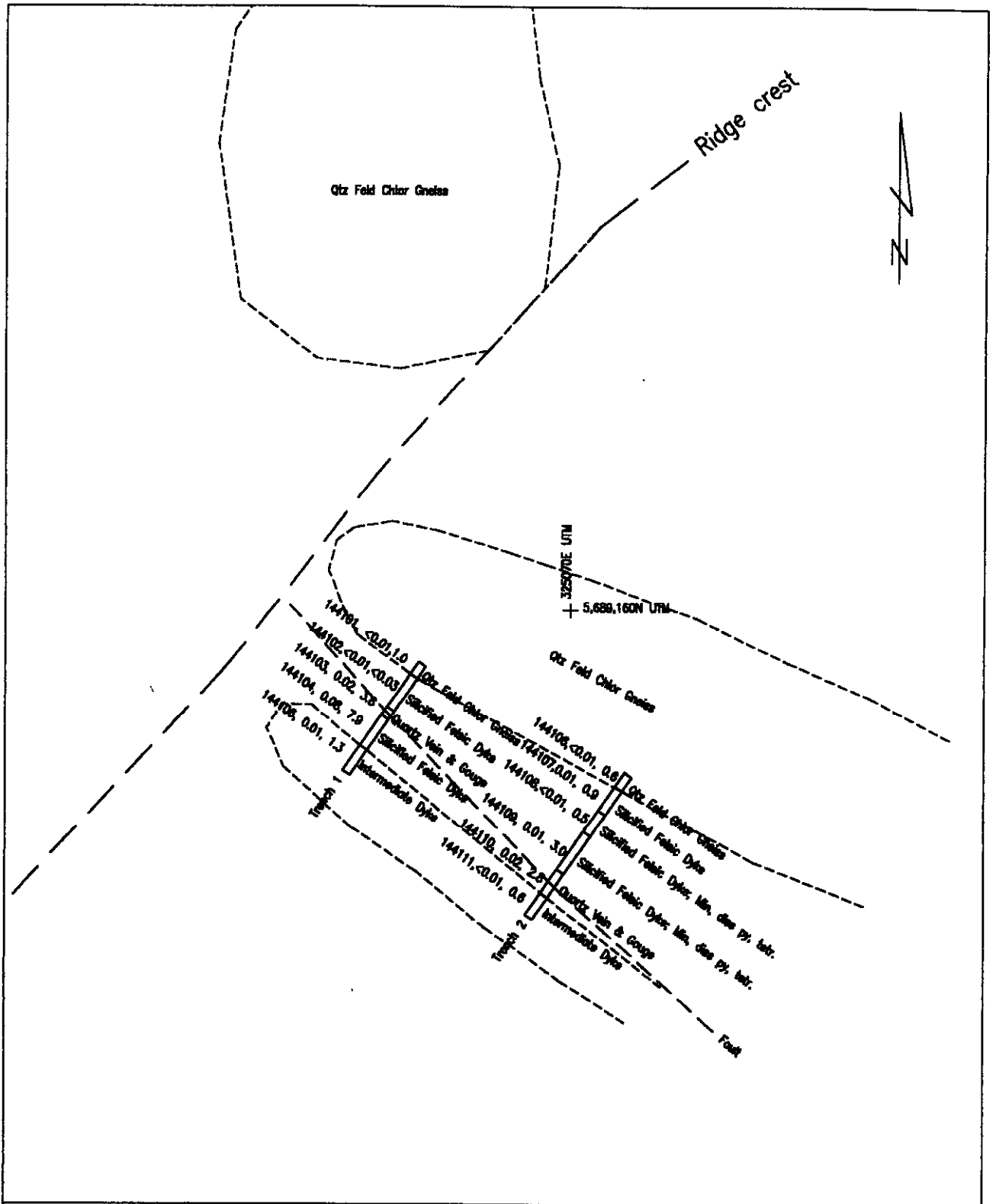
Note;
Contour interval 20 metres.

Saxony Explorations Ltd.

Sampling
U88HMTR34 Area
Lancer 2 Mineral Claim
NTS 92N/5
Vancouver Mining District
British Columbia

Scale 0 500 Metres

Beckett & Associates
Vancouver, B.C. November 2002



Legend

Sampled trench; sample number; gold content, grams per tonne; silver content, grams per tonne.

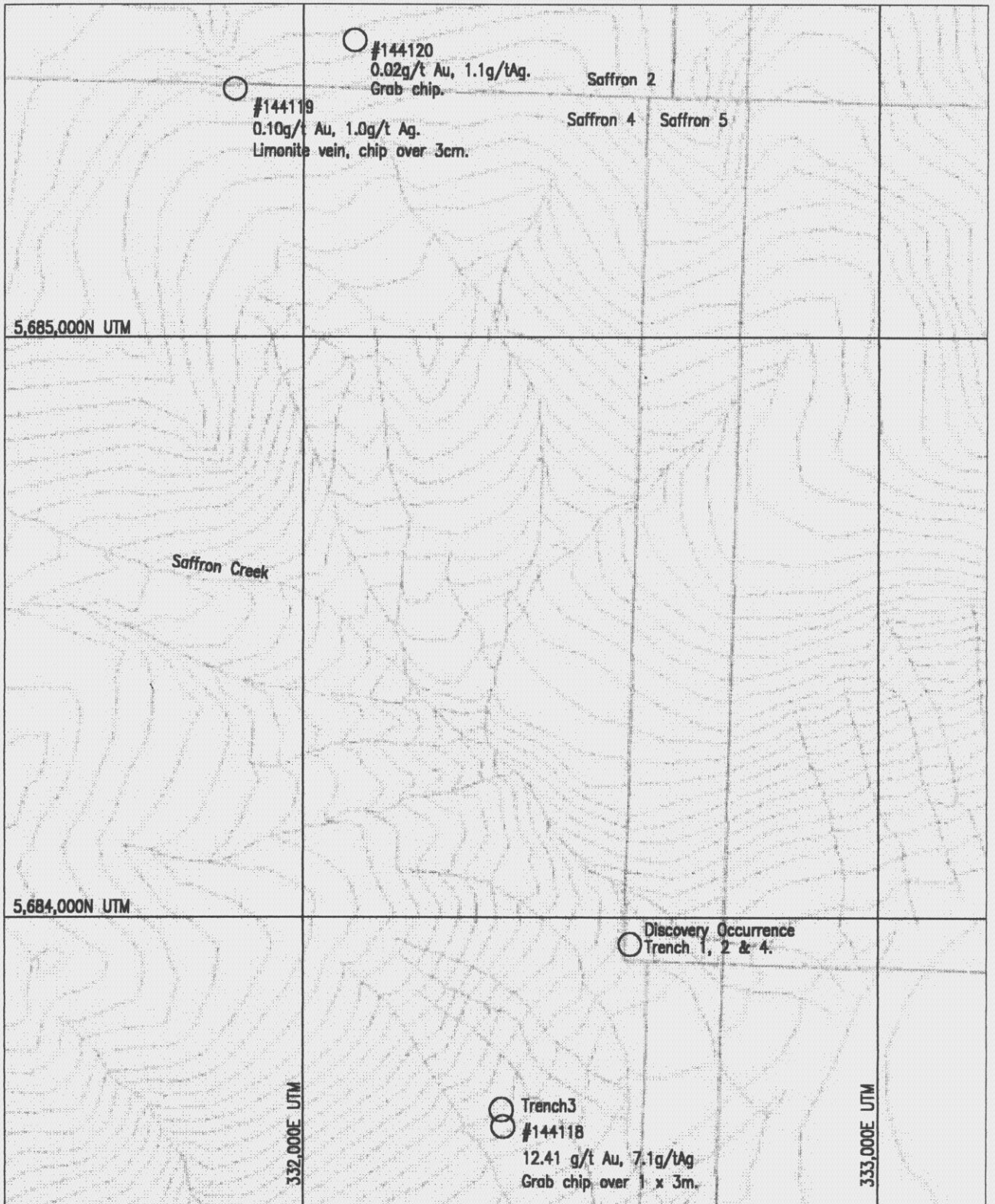
Outcrop.

Saxony Explorations Ltd.

Geology & Sampling
 Trench 1 & 2
 Lancer 2 Mineral Claim
 NTS 92N/5
 Vancouver Mining District
 British Columbia

Scale Metres

Beckett & Associates
 Vancouver, B.C. November 2002



Legend

#144118 ○ Sampled occurrence; number, gold g/t, silver g/t, sample type.

Saffron 4 | Mineral claim boundary, mineral claim.

Note: Contour interval 20 metres.

Saxony Explorations Ltd.

Sampling
Saffron Creek Area
Saffron Mineral Claims
NTS 92N/6
Vancouver Mining District
British Columbia

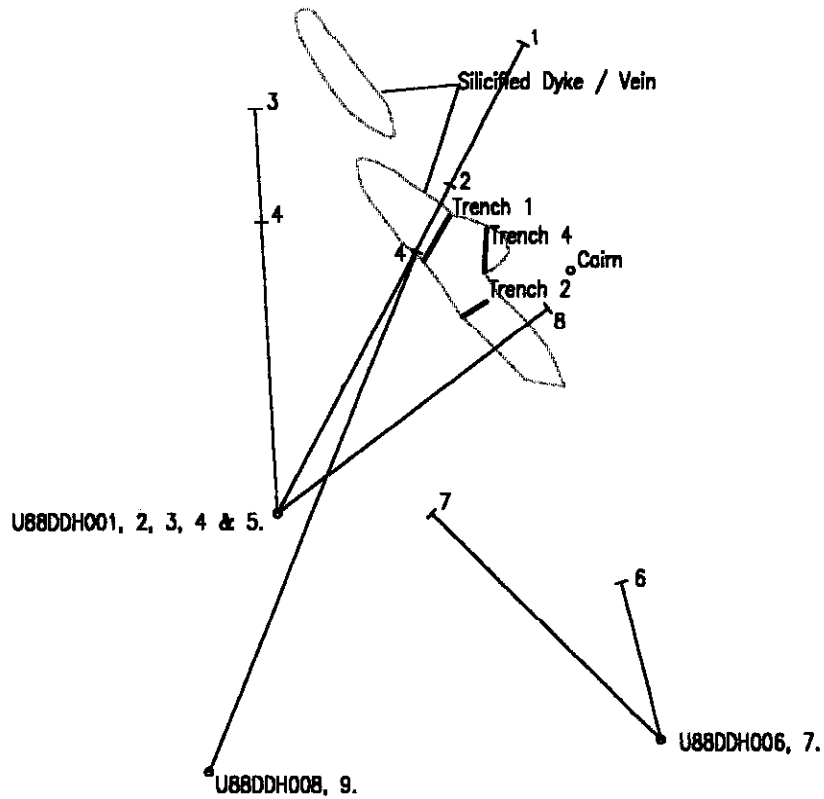
Scale 0 500 Metres

Beckett & Associates
Vancouver, B.C. November 2002

Sampling Discovery Occurrence							
Saffron Creek							
Sample Number	From m	To m	Width m	Gold g/ft	Silver g/ft	Copper %	Description
Trench 1							
West							
144123	0.0	2.0	2.0	3.50	2.4	0.05	lt - mgrey, fgr, mass - wkly foliated; Min diss py 1/2 - 1mm; irreg stg py, sph, po.
144124	2.0	4.0	2.0	0.36	0.5	0.10	as above; @ 2.6m 3cm lim strg, str 130/80S
144125	4.0	6.0	2.0	0.30	2.1	0.29	as above; @ 4.0m 10 - 15cm m - dk bm; friable; limonite, fgr; sucrose qtz; Min py, subhedral, 1 - 3mm strg; str 150/80W; @ 4.6m Min 5% cgr py, 3% cp over 20cm.
144126	6.0	8.0	2.0	2.28	9.3	1.51	as above; @ 6.2m Min 5% cgr py, 3% cp over 20cm; @ 7.9m wht - lt bm stiff clay gouge, str 105/75N.
East							
Trench 2							
West							
144121	0.0	2.0	2.0	0.54	5.3	0.14	m blue gry; fgr, mass; wkly foliated; Min 5% diss & 1/2 - 2mm strgs py, subhedral, in pt lt gry; vgr, 10% relict felds phenocrsts
144122	2.0	4.0	2.0	5.12	6.0	0.49	lt grn gry; fgr, mass; 10% relict felds pheno; Min 3% diss py; ocncl 1-3mm py & m - dk bm sphal strgs.
East							
Trench 4							
South							
144127	0.0	2.0	2.0	0.47	2.7	0.08	0 - 1.8 lt gry; fgr, mass; siliceous; Min 2% diss py; patchy limonite, wad.
144128	2.0	4.0	2.0	0.05	0.9	0.00	1.8 - 3.3 m bm; mgr; mod soft; lim & black wad old fracs; @ 1.8m wht clay 5cm str 125/62N
144129	4.0	6.0	2.0	0.08	4.2	0.13	3.3 - 6.0 m blue gry; fgr; int voic; patchy strgs lim & wad; Min 2% py.
North							

N
Z
N

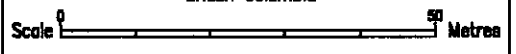
5,689,000N UTM + 332,600E UTM



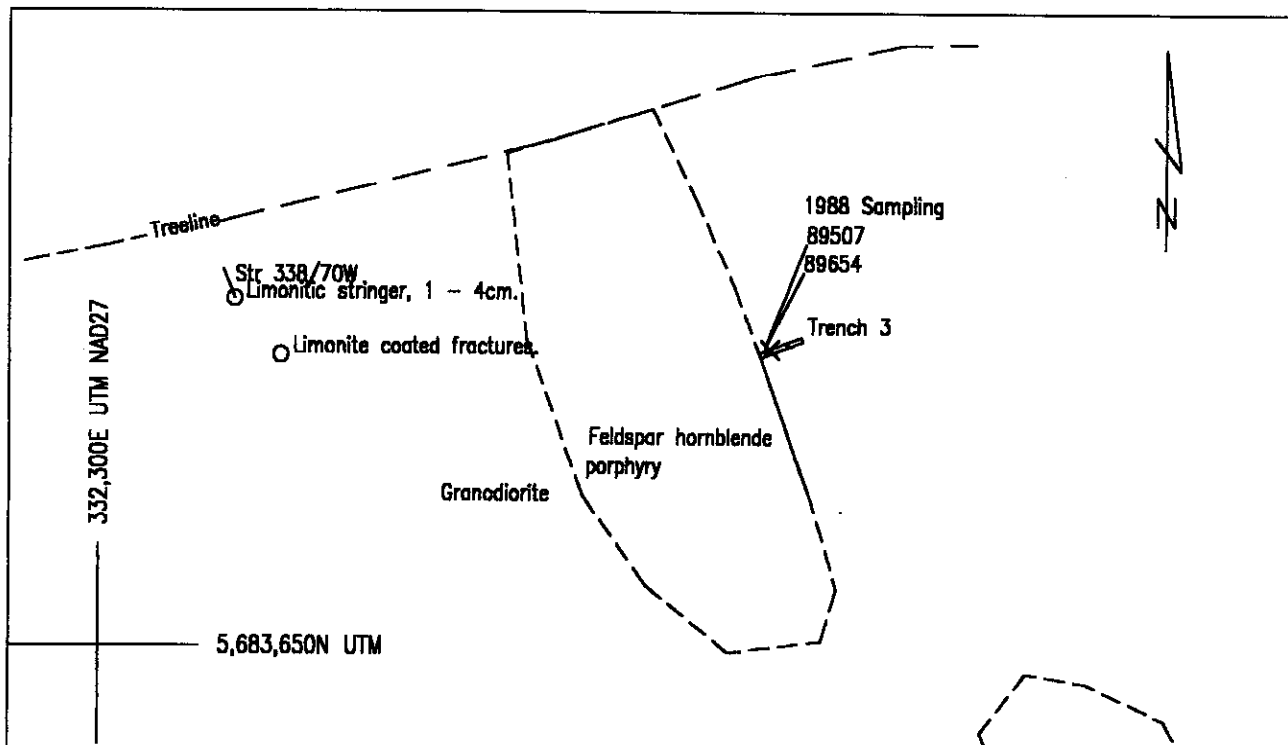
- Legend**
- Trench 1
 - Drill hole, trace, number; locations from Teyman & Ferguson.
 - Outcrop, silicified dyke/vein.

Saxony Explorations Ltd.

Geology & Sampling
 Discovery Occurrence
 Saffron 4 & 5 Mineral Claims
 NTS 82N/6
 Vancouver Mining District
 British Columbia



Beckett & Associates
 Vancouver, B.C. November 2002



Sample results 2002

Sample Number	Sample Width	Description	Sample Type	Gold g/t	Silver g/t	Cu %	Purpose
144114	Trench 3; 0.0 - 0.80m West	Quartz sulphide mineralised intermediate dike; m gm gry; mgr; 5% 1/2 - 1mm felds, 3% hbid chlor phenocrysts, int volc; Min mtrix 3% dias py; occnl lim - qtz - py strgs. 1-2cm, 30% py, 3% cp, 1/2% black sulph; SW ct with qtz feld hbid felsic dike, ct str 340/sub vert; unmineralised.	Chip	1.36	10.3	0.281	Re-establish location and re-sample grab sample #89507, 126.5 g/t gold, 44.6 g/t silver; & 2 metre chip sample #89654, 84.7 g/t gold, 51.4 g/t silver; (Twyman & Forgeron, 1988).
144115	Trench 3; 0.80 - 1.90m	m gry bm; mgr; mass; qtz - felds - biot int intrusive; irreg lim cted strgs 3 - 7mm & blocky lim cted fract.	Chip	0.06	0.3	0.034	"
144116	Trench 3; 1.90 - 2.00m	Limonitic qtz vein; str 355/85S	Chip	0.65	0.9	0.062	"
144117	Trench 3; 2.00 - 3.00m East	Intermediate intrusive; m blue gry; fgr; mass; sparse limonite cted fract.	Chip	0.01	<0.03	0.031	"
144118		Limonitic sheared granodiorite; lt gry - mgry - bm - blk; strgly sheared, friable; irreg qtz strgs 1/2 - 1cm; wuggy; Min limonitic wad, extends 5m southeasterly; vns str 323/sub vert;	Grab ch	12.41	7	0.042	"

144118
Limonitic sheared granodiorite

Feldspar hornblende porphyry

- Legend**
- Trench 3
 - 144118
 - 89507
 - Geological contact
- Trench 3 location & sampling.
Sampling 2002.
Sampling 1988, (Twyman & Forgeron 1988).

Saxony Explorations Ltd.

Geology & Sampling

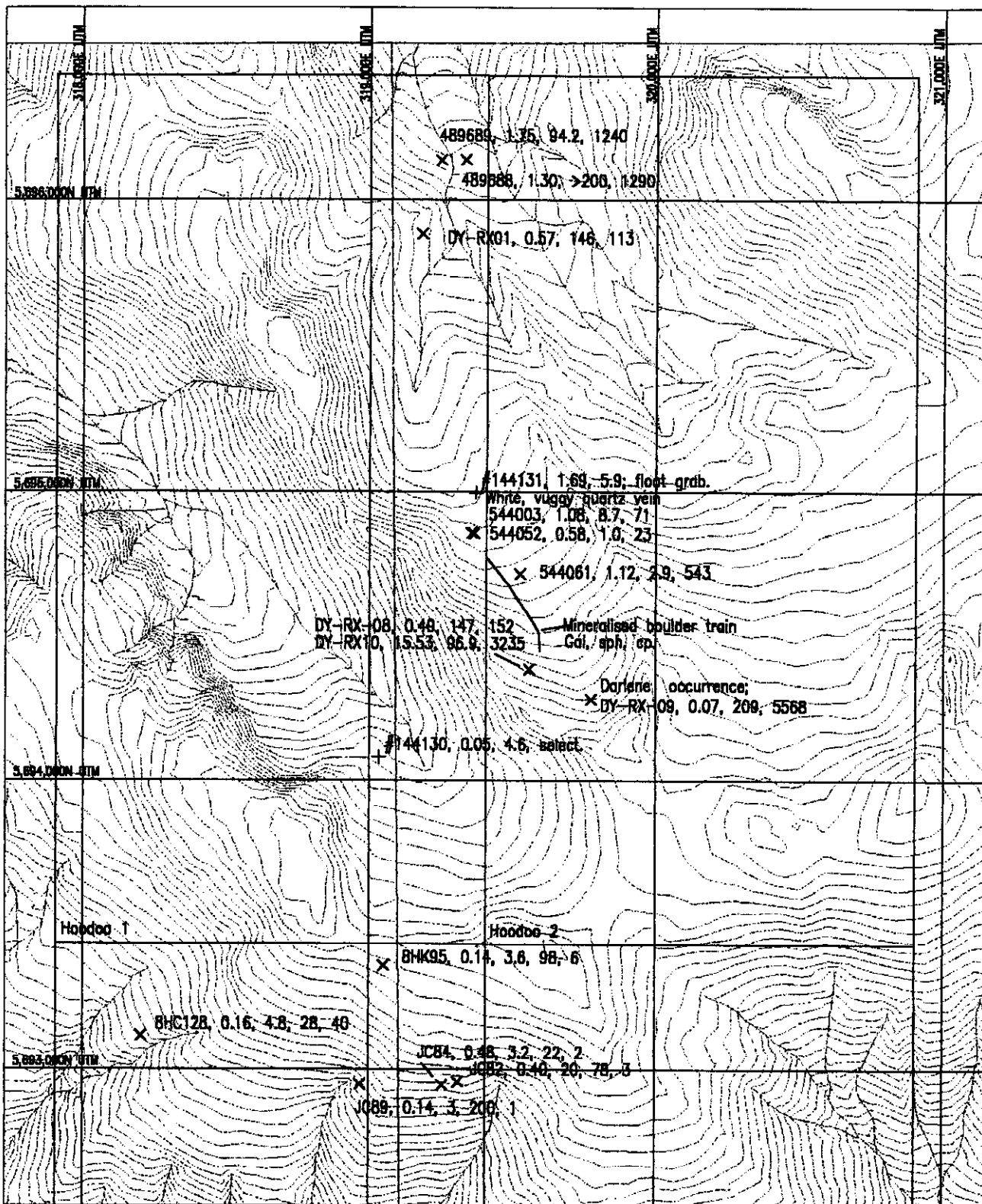
Sample #89654 Area
Saffron 4 Mineral Claim
NTS 92N/6
Vancouver Mining District
British Columbia

Scale 200 Metres

Beckett & Associates

Vancouver, B.C.

November 2002



Legend

- #144131, 1.69, 5.9 + Rock sample October 02;
content, gold g/t; silver g/t.
- DY-RX10, 15.53, 96.9 × Rock sample previous to October 02;
content; gold g/t; silver g/t.

Note Contour interval 20 metres.

Saxony Exploration Ltd.

Sampling
Darlene Occurrence Area
Hoodoo 1 & 2 Mineral Claims
NTS 92N/5
Vancouver Mining District
British Columbia

Scale 0 1000 Metres

Beckett & Associates
Vancouver, B.C.

November 2002

Saxony Explorations Ltd
Exploration 2002
Hoodoo 1 to 2; Lancer 2; and Saffron 4 & 5 Mineral Claims

Knight Inlet Area
Vancouver Mining District
British Columbia
51° 20' North Latitude, 123° 30' West Longitude
NTS 92N 5 & 6

Appendices

Appendix

Assay Certificate, Acme Analytical Laboratories Ltd.

I

ASSAY CERTIFICATE

Ainworth-Jenkins Holdings Inc. File # A204886

935 609 Granville St., Vancouver BC V6C 1T2 Submitted by: Rob Beckert

P. 02/02

FAX NO. 8042531718

NOV-12-2002 TUE 10:36 AM ACME ANALYTICAL LAB

SAMPLE#	Mo %	Cu %	Pb %	Zn %	Ag gm/mt	Ni %	Co %	Mn %	Fe %	Sr %	Cd %	Sb %	Bi %	Ca %	P %	Cr %	Mg %	Al %	Na %	K %	V %	Ag** gm/mt	Au** gm/mt
SI	<.001	<.001	<.02	<.01	<.3	<.001	<.001	.01	.07	.02	<.001	<.01	<.01	7.15	.01	<.001	.17	.91	9.96	.22	<.01	<.3	<.01
144101	<.001	.018	<.02	.01	1.1	.001	.001	.03	3.32	.03	<.001	<.01	<.01	.54	.10	.001	.46	5.72	1.98	3.35	<.01	1.0	<.01
144102	<.001	.005	<.02	<.01	1.6	.001	<.001	<.01	1.73	.01	<.001	<.01	<.01	.09	.04	.001	.14	4.03	1.67	4.14	<.01	<.3	<.01
144103	.002	.007	<.02	<.01	3.9	.001	<.001	.01	4.41	.01	<.001	<.01	<.01	.06	.11	.002	.20	4.99	.45	4.02	<.01	3.8	.02
144104	.001	.014	<.02	.02	8.0	.001	<.001	.02	2.34	.01	<.001	<.01	<.01	.08	.06	.002	.23	4.72	.32	3.62	<.01	7.9	.08
144105	<.001	.038	<.02	.01	2.8	.002	.001	.04	3.47	.03	<.001	<.01	<.01	.53	.12	.001	.26	6.91	1.73	2.63	<.01	1.3	.01
144106	.001	.016	<.02	.01	1.4	.001	<.001	.02	2.62	.02	<.001	<.01	<.01	.40	.11	.001	.59	5.18	2.52	2.83	<.01	.6	<.01
144107	.001	.031	<.02	<.01	1.1	.001	<.001	.01	1.99	.01	<.001	<.01	<.01	.12	.05	.001	.20	4.45	2.48	3.16	<.01	.9	<.01
144108	.001	.007	<.02	<.01	<.3	<.001	<.001	<.01	1.46	.01	<.001	<.01	<.01	.08	.04	.001	.19	5.26	2.08	3.39	<.01	.5	<.01
144109	.001	.002	<.02	<.01	2.7	<.001	<.001	<.01	1.51	<.01	<.001	<.01	<.01	.04	.03	.001	.28	5.53	.67	3.39	<.01	3.0	.01
144110	.002	.010	<.02	.01	3.3	<.001	<.001	.01	2.56	.01	<.001	<.01	<.01	.09	.07	.001	.20	4.92	.32	3.80	<.01	2.8	.02
144111	<.001	.020	<.02	.02	2.0	.001	<.001	.02	4.04	.03	<.001	<.01	<.01	.73	.15	.001	.52	6.89	1.83	2.96	<.01	.6	.01
144112	.001	.004	<.02	.01	.3	.001	<.001	.04	2.40	.03	<.001	<.01	<.01	1.23	.05	.001	.65	4.81	3.10	1.25	<.01	<.3	<.01
RE 144112	.001	.004	<.02	.01	<.3	.001	<.001	.04	2.42	.03	<.001	<.01	<.01	1.26	.05	.001	.67	5.13	3.16	1.27	<.01	<.3	<.01
144113	.001	.001	<.02	<.01	1.2	.001	<.001	<.01	1.33	.01	<.001	<.01	<.01	.09	.02	.002	.22	5.09	1.28	3.43	<.01	1.2	<.01
144114	.009	.281	<.02	.01	9.9	.002	.001	.11	4.47	.01	<.001	<.01	.03	.27	.05	.001	.56	5.94	1.02	2.32	<.01	10.3	1.36
144115	.004	.034	<.02	.01	<.3	.001	.001	.10	3.49	.03	<.001	<.01	<.01	.68	.07	.001	.66	6.35	1.92	2.05	<.01	.3	.06
144116	.014	.062	<.02	.01	.3	.001	.001	.13	4.45	.01	<.001	<.01	<.01	.21	.06	.001	.43	6.41	.19	3.31	<.01	.9	.65
144117	.002	.031	<.02	.01	<.3	.001	<.001	.07	2.27	.03	<.001	<.01	<.01	.81	.06	.001	.46	4.94	2.57	1.69	<.01	<.3	.01
144118	.006	.042	<.02	.01	8.2	<.001	.004	.13	4.16	<.01	<.001	<.01	.01	.10	.04	.001	.29	5.36	.31	2.67	<.01	7.0	12.41
144119	.001	.050	<.02	.01	1.3	.001	.001	.07	13.22	.01	<.001	<.01	<.01	.19	.18	.004	.38	6.58	.36	3.63	<.01	1.0	.10
144120	.001	.025	<.02	<.01	<.3	.002	<.001	.02	4.42	.01	<.001	<.01	<.01	.33	.06	.003	.49	4.75	1.86	2.53	<.01	1.1	.02
144121	.001	.137	<.02	.02	5.3	.002	.001	.22	7.14	<.01	<.001	<.01	.01	.23	.08	.001	.65	5.61	.14	2.85	<.01	5.3	.54
144122	.001	.489	<.02	.03	6.2	.001	<.001	.22	7.69	<.01	<.001	<.01	.01	.17	.06	.001	.54	5.25	.08	2.53	<.01	6.0	5.12
144123	.011	.046	<.02	.01	2.4	.002	.001	.09	5.69	<.01	<.001	<.01	<.01	.05	.05	.001	.19	4.92	.10	2.62	<.01	2.4	3.50
144124	.002	.104	<.02	.02	.9	<.001	<.001	.17	5.64	<.01	<.001	<.01	<.01	.12	.07	.001	.33	6.00	.10	3.12	<.01	.5	.36
144125	.011	.288	<.02	.02	1.5	.003	.002	.74	10.20	<.01	<.001	<.01	<.01	.23	.08	.002	.69	6.36	.07	3.01	<.01	2.1	.30
144126	.003	1.508	<.02	.05	8.5	.001	.001	2.09	12.33	<.01	<.001	<.01	<.01	.59	.05	.001	.78	5.56	.03	2.50	<.01	9.3	2.28
144127	.004	.081	<.02	.02	2.4	.001	.001	.30	6.57	<.01	<.001	<.01	<.01	.16	.07	.001	.32	5.22	.05	2.69	<.01	2.7	.47
144128	.001	.085	<.02	.04	1.1	.003	.002	.40	8.77	.01	<.001	<.01	<.01	.57	.11	.003	.79	7.66	.41	2.86	<.01	.9	.05
144129	.001	.125	<.02	.02	4.5	.002	.001	.15	6.84	.06	<.001	<.01	<.01	3.66	.11	.002	1.50	7.39	2.35	.98	<.01	4.2	.08
144130	.001	.027	<.02	.34	4.2	.011	.055	.21	20.65	.01	.002	<.01	<.01	1.48	.04	.008	1.47	4.18	.58	.92	<.01	4.6	.05
144131	.001	.004	.06	.02	5.6	<.001	<.001	.02	.76	.01	<.001	<.01	<.01	.08	.02	.005	.16	3.76	.27	3.92	<.01	5.9	1.69
STANDARD R-1/AU-1	.090	.848	1.31	2.26	101.3	.025	.025	.10	6.93	.07	.048	.16	.03	2.58	.10	.029	1.01	4.91	1.53	1.89	.01	99.9	3.31

GROUP 7TD - 1.00 gm SAMPLE, 4 ACID (HF-HClO4-HNO3-HCl) DIGESTION TO 100 ML, ANALYSIS BY ICP-ES.

AG** & AU** BY FIRE ASSAY FROM 1 A.T. SAMPLE.

- SAMPLE TYPE: ROCK R150 60C Samples beginning 'RE' are Retuns and 'RRE' are Reject Retuns.

DATE RECEIVED: NOV 4 2002 DATE REPORT MAILED: Nov 12/02 SIGNED BY: *Ch* D. TOYE, C. LEONG, J. WANG; CERTIFIED B.C. ASSAYERS

21 ICP