

RECEIVED
FEB 06 2004
GOLD COMMISSIONER'S OFFICE
VANCOUVER, B.C.

BSR CLAIM

Victoria District
Map # 092b 12w
Ten. # 383044
Owner/ Operator B.D. Waters
5440 Fowler Rd.,
Victoria, B.C.
V8Y 1Y3.
Tel. 658-8974.

GOLD COMMISSIONER
RECEIVED and RECORDED
FEB 03 2004
SER. #
VICTORIA, B.C.

GEOLOGICAL SURVEY BRANCH
ASSESSMENT REPORT

27,327

BSR Claim
MAP-029B-12W 092B12W
TENURE 383044

LOCATION / ACCESS

From Shawnigan Lk./ West Shawnigan Lk. Turnoff on old West Coast/ Renfrew Rd.
19 KM. to WEEKS LK. Turnoff
4 KM. to WEEKS LK. (Timberwest Gate)
3.5 KM. to EAST JORDAN M/L.
.4 KM. to Claim access (FINAL POST 0437967 x 5379725)

HISTORY

Active area since 1800's.
Silver prospects to north in San Juan area
South-West to Gold prospects (Valentine Mtn./ Beaupre Mines)
Copper showings to West (Sunro Mines)

This Property is located at the headwaters of the Leech and Jordan Rivers on the East side of Jordan Meadows.

GEOLOGY

Located on geological fault line between Argylitte-MetaGreywacke-Slate-Phyllite Schist
Quartz- Biotite (MLA ON MAP)
and
Chert- Argylitte Volcanics- Ribbon Chert- Cherty Argylitte- MetaRhyolite
MetaBasalt and Chlorite Schist. (MLC ON MAP)

PROSPECTS

A significant outcropping of Limestone prompted me to try and establish the size and possible contact zones between the Limestone and the two major geological zones (above).

EQUIPMENT

S.P. SURVEY using a Digital Multimeter and two ceramic pots inserted into which was a Copper tube immersed into a Copper Sulphate solution in order to obtain maximum contact with the ground .
This line was done in one setting with a large capacity reel of electrical wire.

FINDINGS

Starting 125 Feet from Final Post and along a line between the Final and Initial Post ,readings were taken every 25 Feet with the equipment , layout of grid lines and interpretation of findings as taught by the Dept. of Mines Advanced Prospecting School held in Nelson (1981)

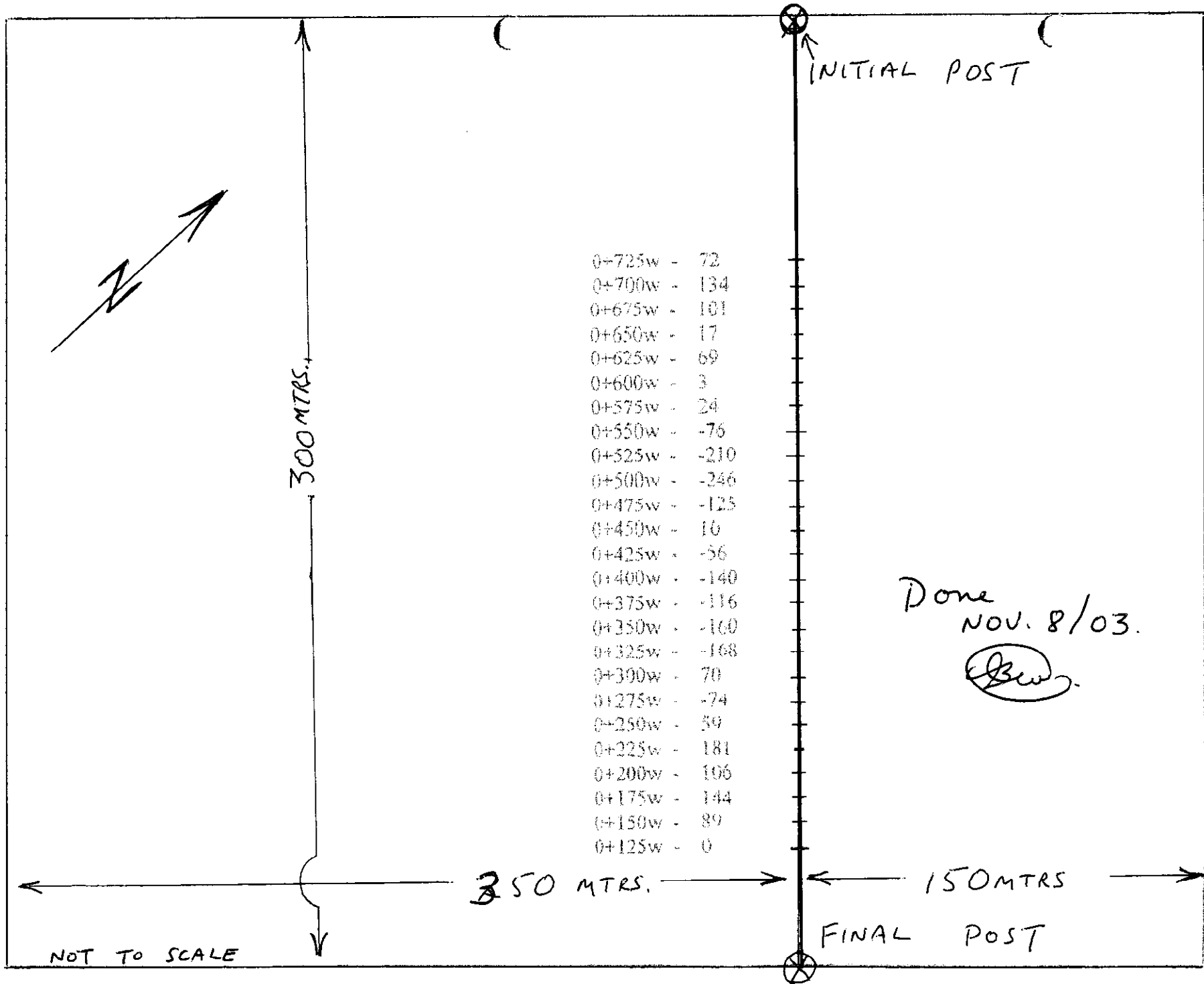
These preliminary readings were encouraging enough to warrant further testing.

COSTS

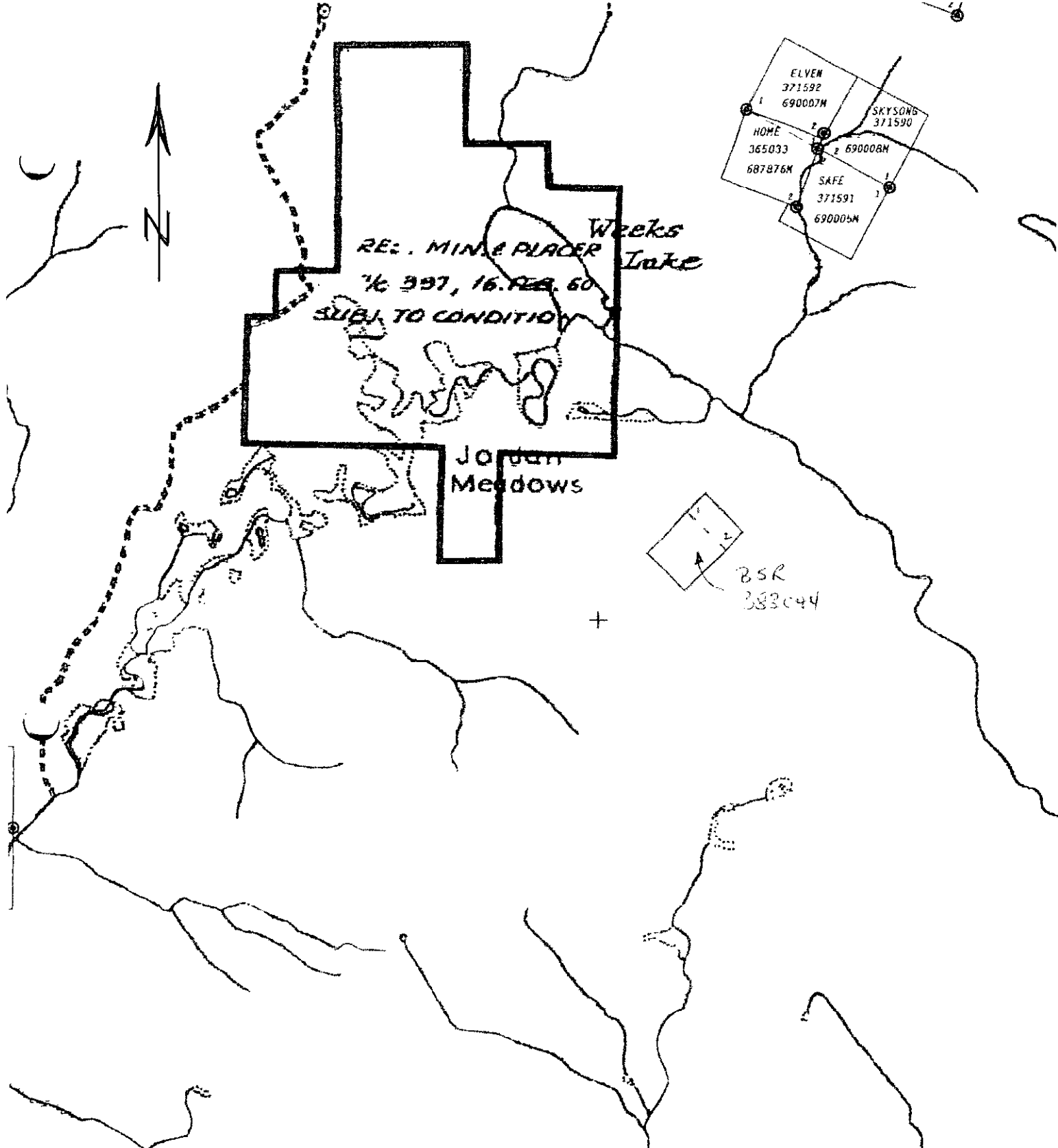
2 men @ 4 Hrs.
8 Hrs. @ \$ 25 per = \$ 200.

Fuel expenses,
Report \$100
\$ 300

Barry P. Waters
Jan 23, 2004.



NOT TO SCALE



X #2
 26-325
 462
 3SX6E

LUSTER #2
 260415
 742
 3NY6W

JORDAN GOLD 5
 260414
 West Lead West
 737
 3SX6M

MHC

MKA

BLADNEY

Weeks L

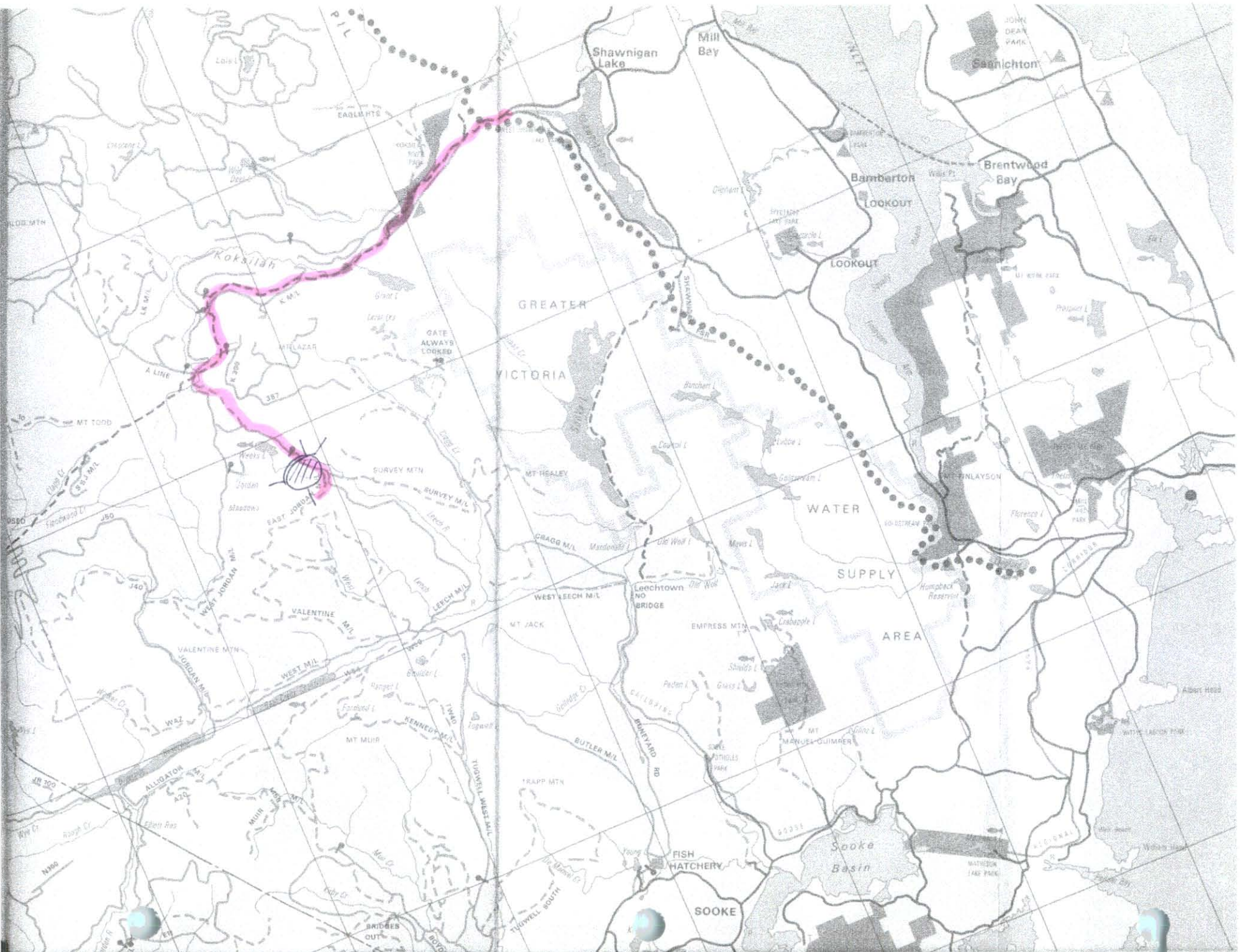
Jordan

Meadows



30

70



Shawanigan Lake

Mill Bay

Sagnichton

Bamberton

Brentwood Bay

Koksilah

GREATER

VICTORIA

WATER

SUPPLY

AREA

Leechtown NO. 1 BRIDGE

EMPERESS MTN.

FISH HATCHERY

SOOKE

Sooke Basin

MATHISON LAKE PARK

