

RECEIVED

JAN 4 - 2005

Gold Commissioner's Office
VANCOUVER, B.C.

27-589

Rimfire Minerals Corporation
2004 GEOLOGICAL AND
GEOCHEMICAL REPORT ON
THE LJ AND SUTLAHINE
PROPERTIES

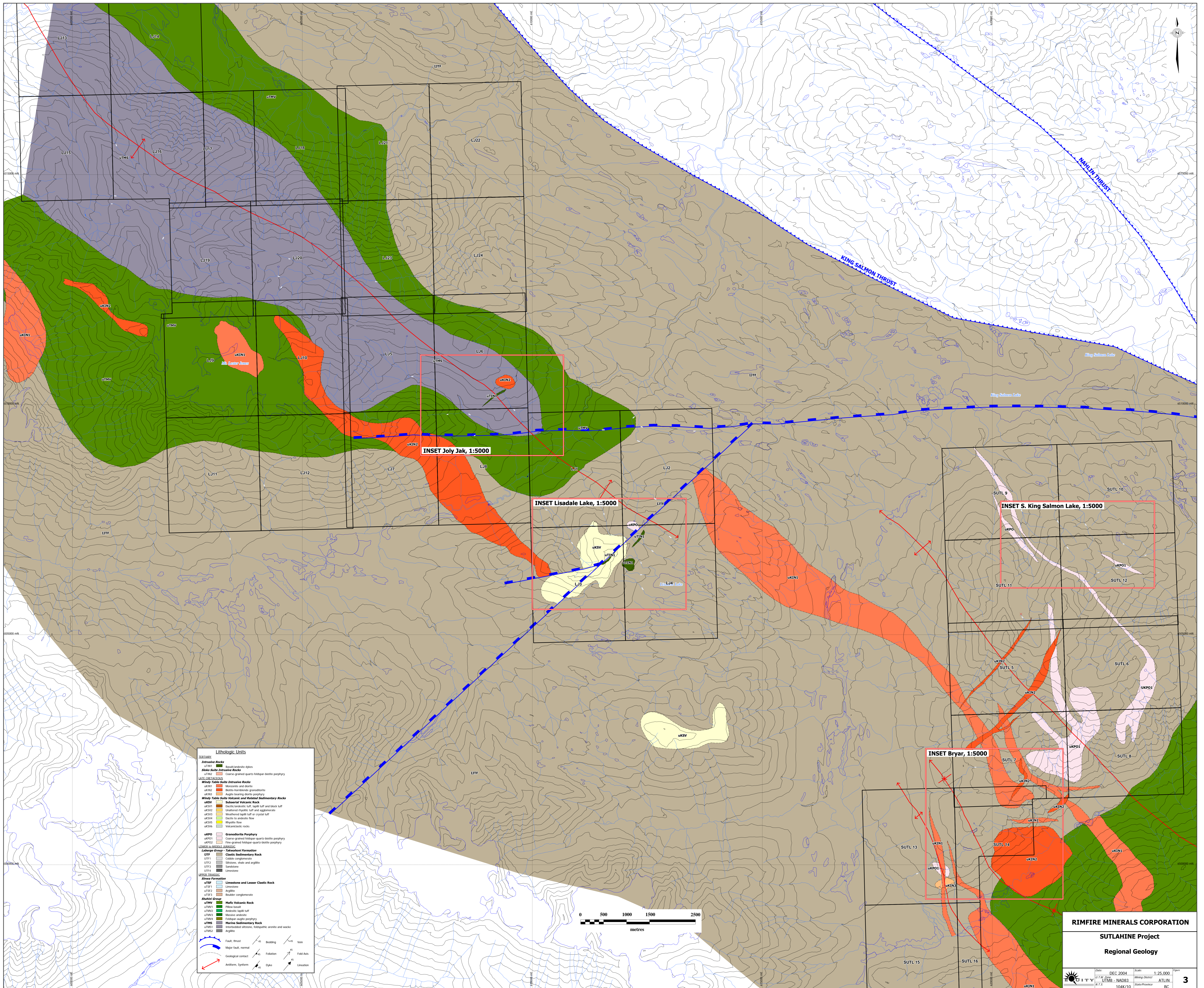
Volume II – Figures

Located between the Sutlahine River & Taku River Area
Atlin Mining Division
NTS 104K/064, 065, 066, 074, 075, 076
58° 44' North Latitude
133° 12' West Longitude

-prepared for-
RIMFIRE MINERALS CORPORATION
Suite 700, 700 West Pender Street
Vancouver, British Columbia, Canada
V6C 1G8

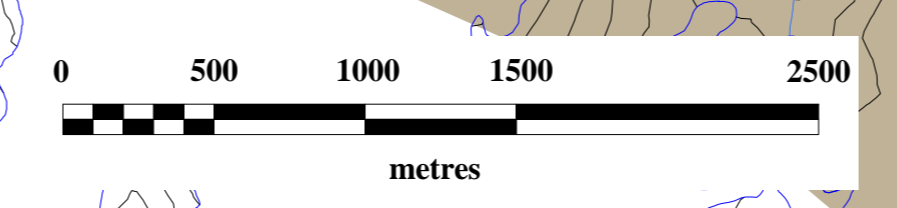
-prepared by-
Adam T. Simmons
EQUITY ENGINEERING LTD.
Suite 700, 700 West Pender Street
Vancouver, British Columbia, Canada
V6C 1G8
adam@equityeng.bc.ca

December, 2004



Lithologic Units

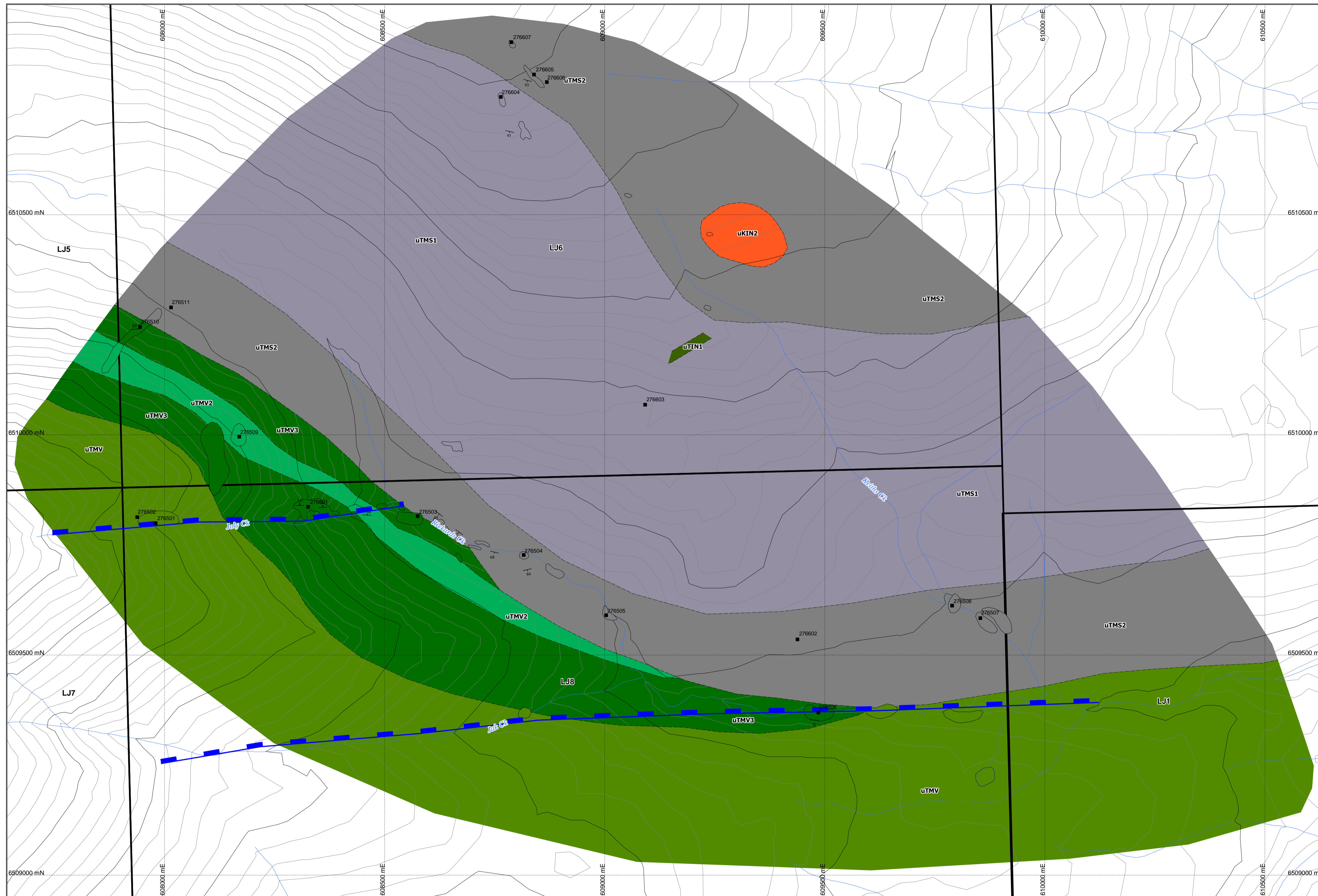
INTRUSIVE	Intrusive Rocks	ukIN1	Basalt/basaltic dykes
	Diabase Intrusive Rocks	ukIN2	Coarse grained quartz-feldspar biotite porphyry
	Windy Tule Suite Intrusive Rocks	ukIN3	Monzonite and diorite
		ukIN4	Albite-bearing diorite porphyry
	Windy Tule Suite Intrusive and Related Sedimentary Rocks	ukIN5	Subvolcanic Volcanic Rock
		ukIN6	Dacitic andesitic tuff, light tuff and block tuff
		ukIN7	Unaltered rhyolite tuff and agglomerate
		ukIN8	Weathered light tuff or crystal tuff
		ukIN9	Dacite to andesite flow
		ukIN10	Rhyolite flow
		ukIN11	Volcaniclastic rocks
		ukIN12	Grenadiorite Porphyry
		ukIN13	Coarse grained feldspar quartz biotite porphyry
		ukIN14	Fine grained feldspar quartz biotite porphyry
	LAKEWASH GROUP - TALKWASH FORMATION		
	Clastic Sedimentary Rock	ukLW1	Clastic conglomerate
		ukLW2	Siltstone, shale and argillite
		ukLW3	Sandstone
		ukLW4	Limestone
	SEWER FORMATION		
	Limestone and Lesser Clastic Rock	ukSF1	Limestone
		ukSF2	Argillite
		ukSF3	Blocker conglomerate
	SHALIN GROUP		
	Mafic Volcanic Rock	ukSH1	Basalt
		ukSH2	Andesitic light tuff
		ukSH3	Basaltic andesite
		ukSH4	Feldspar-slag porphyry
	Mafic Sedimentary Rock	ukMS1	Intersorted siltstone, Hesperoite, argillite and wacke
		ukMS2	Argillite



RIMFIRE MINERALS CORPORATION
SUTLAHINE Project
Regional Geology

DATE: DEC 2004
 DRAWN BY: M. J. S.
 SCALE: 1:25,000
 PROJECT: NAD83
 STATE/PROVINCE: BC

3



Lithologic Units

TERTIARY

Intrusive Rocks

- uTKIN1 Monzonite and diorite
- Sloko Suite Intrusive Rocks**
 - uTKIN2 Coarse-grained quartz-feldspar-biotite porphyry

LATE CRETACEOUS

Windy Table Suite Intrusive Rocks

- uKIN1 Monzonite and diorite
- uKIN2 Biotite-hornblende granodiorite
- uKIN3 Augite bearing diorite porphyry

Windy Table Suite Volcanic and Related Sedimentary Rocks

- uKSV Subaerial Volcanic Rock**
 - uKSV1 Dacitic/andesitic tuff, lapilli tuff and block tuff
 - uKSV2 Unaltered rhyolitic tuff and agglomerate
 - uKSV3 Weathered lapilli tuff or crystal tuff
 - uKSV4 Dacite to andesite flow
 - uKSV5 Rhyolite flow
 - uKSV6 Volcaniclastic rocks
- uKPO Granodiorite Porphyry**
 - uKPO1 Coarse-grained feldspar-quartz-biotite porphyry
 - uKPO2 Fine-grained feldspar-quartz-biotite porphyry

LOWER to MIDDLE JURASSIC

Laberge Group - Takwahoni Formation

- UTF Classic Sedimentary Rock**
 - UTF1 Cobble conglomerate
 - UTF2 Siltstone, shale and argillite
 - UTF3 Sandstone
 - UTF4 Limestone

UPPER TRIASSIC

Siwa Formation

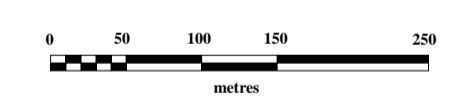
- uTSF Limestone and Lesser Clastic Rock**
 - uTSF1 Limestone
 - uTSF2 Argillite
 - uTSF3 Boulder conglomerate

Stuhini Group

- uTMV Mafic Volcanic Rock**
 - uTMV1 Pillow basalt
 - uTMV2 Andesitic lapilli tuff
 - uTMV3 Massive andesite
 - uTMV4 Feldspar-augite porphyry
- uTMS Marine Sedimentary Rock**
 - uTMS1 Interbedded siltstone, feldspathic arenite and wacke
 - uTMS2 Argillite

Structural Features

- Fault, thrust
- Major fault, normal
- Geological contact
- Antiform, Synform
- Bedding
- Foliation
- Dyke
- Vein
- Fold Axis
- Lineation



RIMFIRE MINERALS CORPORATION

SUTLAHINE Project

JolyJak

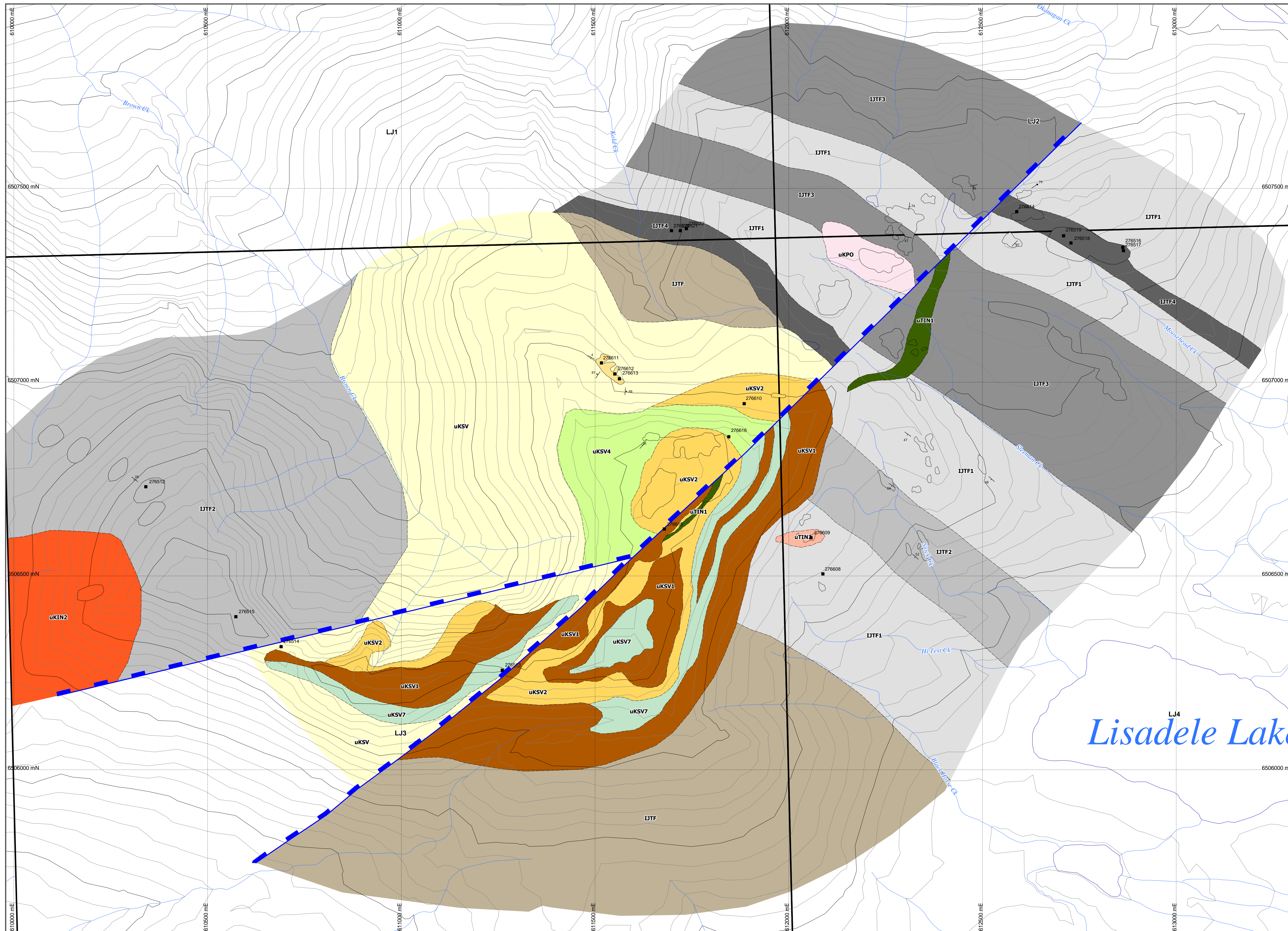
Geology with Rock Samples

DEC 2004 1:5,000 Figure 4a

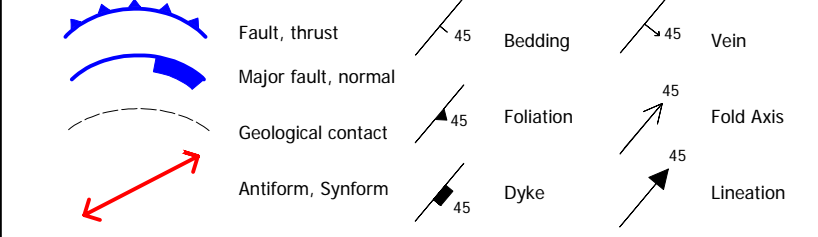
276507 276504 276501 276502 276504 276505 276602 276603 276608 276507

Rock Geochemistry Assays

SAMPLE_ID	Au_ppm	Ag_ppm	As_ppm	Cu_ppm	Mo_ppm	Pb_ppm	Sb_ppm	Zn_ppm
276501	0.123	102	10,000	1,165	2	28,200	1,670	1,870
276502	0.984	26.5	10,000	181	1	23,800	10,000	14,900
276503	1.51	5.2	10,000	202	2	276	188	61
276504	0.0025	2.1	495	74	10	117	32	38
276505	0.409	0.8	10,000	105	2	794	191	2,600
276506	1.92	31.8	10,000	2,580	2	8,140	6,900	17,700
276507	0.244	35.7	3,230	348	51	768	289	1,845
276508	0.482	50.3	5,390	1,140	3	7,410	421	65,400
276509	0.008	2	588	64	1	1,910	1,425	1,130
276510	0.108	2.1	9,170	254	1	298	148	1,000
276511	3.3	56.4	10,000	1,925	3	519	387	45
276601	1.06	158	10,000	304	1	58,800	10,000	33,200
276602	0.008	0.3	309	7	1	76	19	86
276603	0.0025	0.2	85	13	1	90	18	72
276604	0.0025	0.1	26	104	0.5	5	2	89
276605	0.0025	0.2	20	249	0.5	9	2	116
276606	0.014	0.1	8	132	0.5	7	3	99
276607	0.012	1.7	71	297	1	13	5	73



- Lithologic Units**
- TERTIARY**
- Intrusive Rocks**
 - uTIN1 Basalt/andesite dykes
 - Sloko Suite Intrusive Rocks**
 - uTIN2 Coarse-grained quartz-feldspar-biotite porphyry
- LATE CRETACEOUS**
- Windy Table Suite Intrusive Rocks**
 - uKIN1 Monzonite and diorite
 - uKIN2 Biotite-hornblende granodiorite
 - uKIN3 Azule bearing diorite porphyry
 - Windy Table Suite Volcanic and Related Sedimentary Rocks**
 - uKSV Subaerial Volcanic Rock
 - uKSV1 Dacitic/andesitic tuff, lapilli tuff and block tuff
 - uKSV2 Unaltered rhyolitic tuff and agglomerate
 - uKSV3 Weathered lapilli tuff or crystal tuff
 - uKSV4 Dacite to andesite flow
 - uKSV5 Rhyolite flow
 - uKSV6 Volcaniclastic rocks
 - uKPO Granodiorite Porphyry**
 - uKPO1 Coarse-grained feldspar-quartz-biotite porphyry
 - uKPO2 Fine-grained feldspar-quartz-biotite porphyry
- LOWER to MIDDLE JURASSIC**
- Laberge Group - Takwahoni Formation**
 - uTIF Clastic Sedimentary Rock
 - uTIF1 Cobble conglomerate
 - uTIF2 Siltstone, shale and argillite
 - uTIF3 Sandstone
 - uTIF4 Limestone
- UPPER TRIASSIC**
- Simsa Formation**
 - uTSF Limestone and Lesser Clastic Rock
 - uTSF1 Limestone
 - uTSF2 Argillite
 - uTSF3 Boulder conglomerate
- Stahni Group**
- Mafic Volcanic Rock**
 - uTMV1 Pillow basalt
 - uTMV2 Andesitic lapilli tuff
 - uTMV3 Massive andesite
 - uTMV4 Feldspar-azule porphyry
 - Marine Sedimentary Rock**
 - uTMS1 Interbedded siltstone, feldspathic arenite and wacke
 - uTMS2 Argillite



RIMFIRE MINERALS CORPORATION

SUTLAHINE Project

Lisadele Lake

Geology with Rock Samples

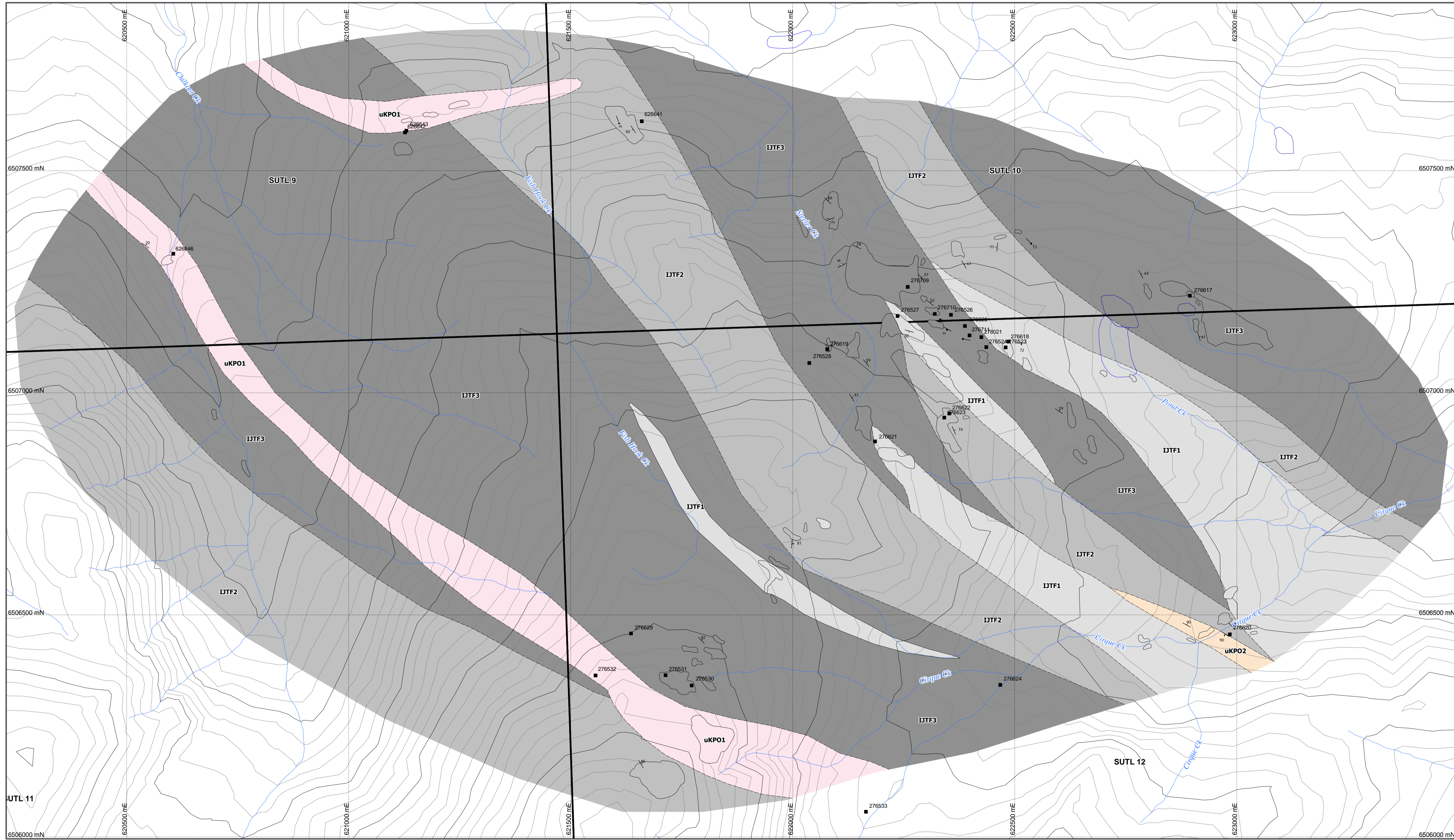
Scale: 0 50 100 150 250 metres

DATE: 08/12/2004
 DRAWN BY: GIBS, NAGB3
 CHECKED BY: ATJLN
 PROJECT: 10467/10

Figure 4b

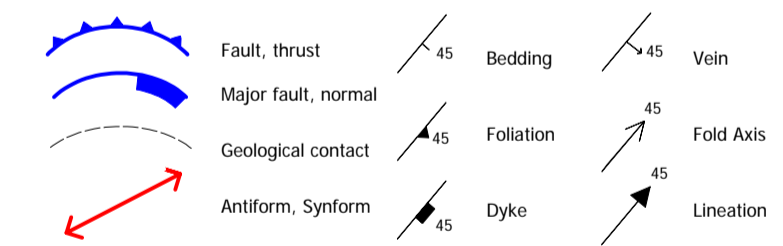
Rock Geochemistry Assays

SAMPLE_ID	Au_ppm	Ag_ppm	As_ppm	Cu_ppm	Mo_ppm	Pb_ppm	Sb_ppm	Zn_ppm
276512	0.016	1.8	27	237	2	19	1	124
276513	0.0025	0.9	9	28	0.5	9	1	104
276514	0.028	0.5	173	146	28	14	2	29
276515	0.0025	0.4	81	6	0.5	15	1	42
276516	0.0025	0.5	18	7,450	0.5	20	1	37
276517	0.0025	0.1	1	20	0.5	7	1	69
276518	0.0025	0.2	2,430	38,700	0.5	5	2	21
276519	0.0025	0.2	9	1,420	0.5	4	1	15
276520	0.0025	0.7	20	2,710	0.5	6	7	31
276521	0.012	0.8	48	1,015	15	48	6	267
276522	0.0025	0.2	18	112	2	5	37	21
276608	0.026	0.4	24	90	2	42	1	70
276609	0.0025	0.2	11	27	1	13	1	99
276610	0.0025	0.1	13	6	0.5	14	1	52
276611	0.0025	0.1	3	8	1	7	1	80
276612	0.013	0.1	1	9	6	20	1	89
276613	0.0025	0.1	1	6	5	19	1	22
276614	0.0025	0.1	11	64	0.5	2	2	38
276615	0.0025	0.1	20	32	2	8	2	96
276616	0.0025	0.1	38	13	1	28	3	74



Lithologic Units

- INTRUSIVE ROCKS**
- uKIN1 Basalt/andesite dykes
 - uKIN2 Coarse-grained quartz-feldspar-biotite porphyry
- LATE CRETACEOUS**
- Windy Table Suite Intrusive Rocks**
- uKIN1 Monzonite and diorite
 - uKIN2 Biotite-hornblende granodiorite
 - uKIN3 Augite bearing diorite porphyry
- Windy Table Suite Volcanic and Related Sedimentary Rocks**
- uKSV1 Subaerial Volcanic Rock
 - uKSV2 Dacitic/andesitic tuff, lapilli tuff and block tuff
 - uKSV3 Unaltered rhyolitic tuff and agglomerate
 - uKSV4 Weathered lapilli tuff or crystal tuff
 - uKSV5 Dacite to andesite flow
 - uKSV6 Rhyolite flow
 - uKSV6 Volcaniclastic rocks
- uKPO**
- uKPO1 Coarse-grained feldspar-quartz-biotite porphyry
 - uKPO2 Fine-grained feldspar-quartz-biotite porphyry
- LOWER to MIDDLE JURASSIC**
- Lalberge Group - Takwahoni Formation**
- IJTF1 Clastic Sedimentary Rock
 - IJTF2 Siltstone, shale and argillite
 - IJTF3 Sandstone
 - IJTF4 Limestone
- UPPER TRIASSIC**
- Simwa Formation**
- uTSF1 Limestone and Lesser Clastic Rock
 - uTSF2 Limestone
 - uTSF3 Argillite
 - uTSF3 Boulder conglomerate
- Stuhini Group**
- uTMV1 Mafic Volcanic Rock
 - uTMV2 Pillow basalt
 - uTMV3 Andesitic lapilli tuff
 - uTMV4 Massive andesite
 - uTMV4 Feldspar-augite porphyry
 - uTMS1 Marine Sedimentary Rock
 - uTMS1 Interbedded siltstone, feldspathic arenite and wacke
 - uTMS2 Argillite



RIMFIRE MINERALS CORPORATION

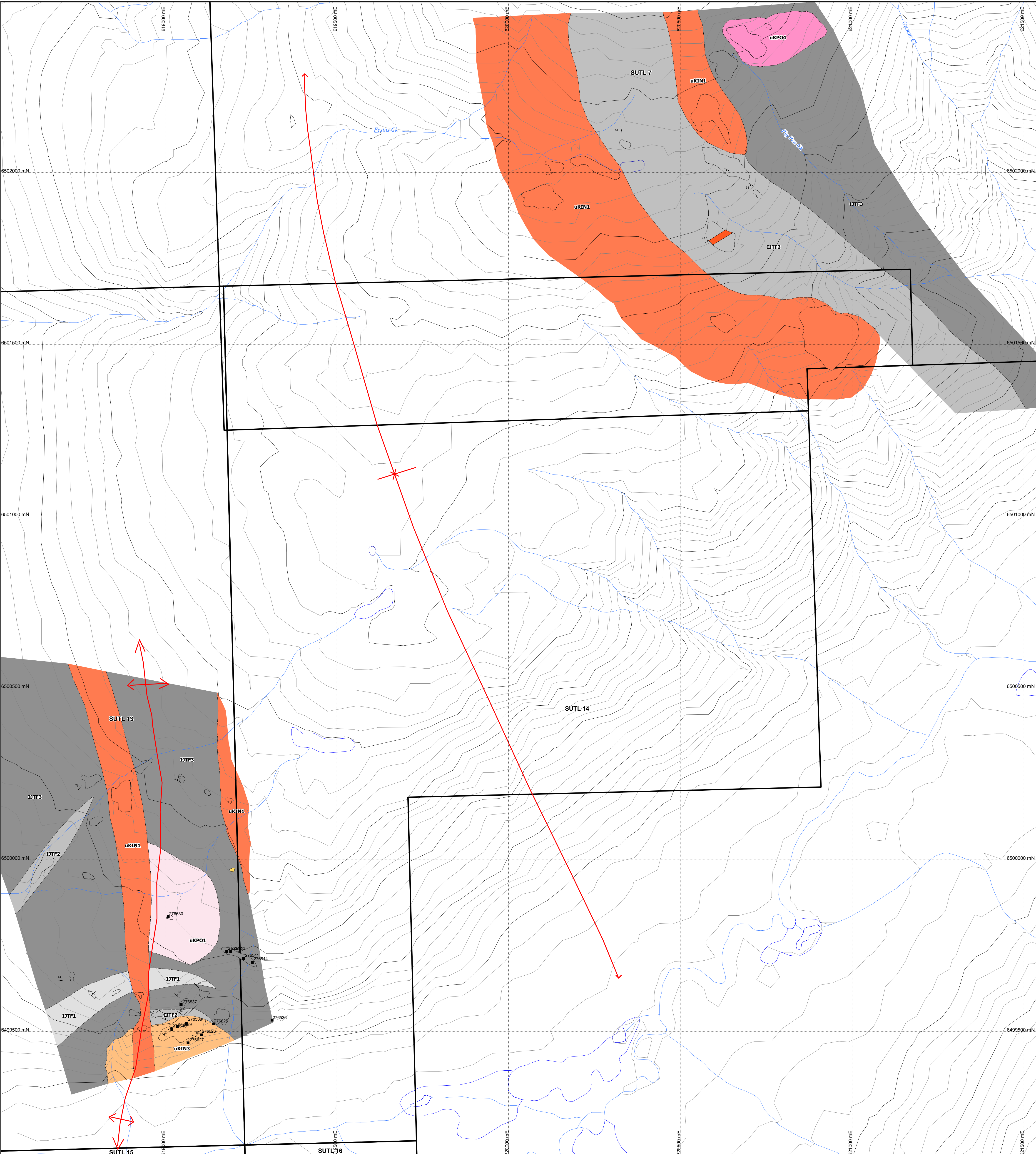
SUTLAHINE Project
S. King Salmon Lake
Geology with Rock Samples

DATE: DEC 2004 SCALE: 1:5,000
 DRAWN BY: NAD83
 CHECKED BY: AT/LN
 PROJECT: SUTLAHINE

4C

Rock Geochemistry Assays

SAMPLE ID	Au_ppm	Ag_ppm	As_ppm	Cu_ppm	Mo_ppm	Pb_ppm	Sb_ppm	Zn_ppm
276523	4.22	5.5	10,000	45	1	30	883	162
276524	2.13	2.5	10,000	20	3	28	125	63
276525	1.26	2.6	10,000	38	1	39	73	120
276526	1.51	3.7	10,000	31	2	24	106	23
276527	1.31	2.4	10,000	24	1	113	83	45
276528	13.35	324	8,630	152	2	5,220	152	3,400
276529	0.885	1,255	1,360	1,455	2	10,900	586	50,700
276530	0.985	4.6	10,000	53	4	57	157	192
276531	0.422	5.7	4,180	28	2	56	23	130
276532	0.54	1,225	7,390	407	3	7,890	250	9,030
276533	0.305	2.8	10,000	24	7	69	22	76
276617	0.009	1.1	119	31	2	7	3	63
276618	0.179	1.5	1,390	42	1	13	10	41
276619	2.53	498	10,000	444	2	408	177	5,590
276620	0.103	1.5	2,650	19	0.5	8	15	36
276621	0.234	4.3	1,695	32	2	26	15	48
276622	0.262	0.4	3,950	6	1	10	16	54
276623	0.0025	0.4	19	4	1	7	2	61
276624	2.85	0.6	10,000	7	12	72	83	31
276709	0.3	2.1	1,790	51	1	22	16	36
276710	1.18	4.7	5,620	83	3	589	34	1,450
276711	0.86	2.7	5,640	55	1	24	35	10
278021	0.47	2.5	4,890	10	1	21	39	9
626641	3.96	3.7	1,145	7	3	48	6	92
626642	1.1	49	10,000	137	182	10,000	75	6,690
626643	0.27	19.7	4,250	498	644	1,840	48	10,000
626646	0.02	0.4	203	208	13	81	1	4,330



Lithologic Units

TERTIARY

Intrusive Rocks

- uTIN1 Basalt/andesite dykes
- Sloko Suite Intrusive Rocks**
- uTIN2 Coarse-grained quartz-feldspar-biotite porphyry

LATE CRETACEOUS

Windy Table Suite Intrusive Rocks

- uKIN1 Monzonite and diorite
- uKIN2 Biotite-hornblende granodiorite
- uKIN3 Aegirite-bearing diorite porphyry

Windy Table Suite Volcanic and Related Sedimentary Rocks

Subaerial Volcanic Rock

- uKSV1 Dacitic/andesitic tuff, lapilli tuff and block tuff
- uKSV2 Unaltered rhyolitic tuff and agglomerate
- uKSV3 Weathered lapilli tuff or crystal tuff
- uKSV4 Dacite to andesite flow
- uKSV5 Rhyolite flow
- uKSV6 Volcaniclastic rocks

uKPO

- uKPO1 Granodiorite Porphyry
- uKPO2 Coarse-grained feldspar-quartz-biotite porphyry
- uKPO3 Fine-grained feldspar-quartz-biotite porphyry

LOWER to MIDDLE JURASSIC

Laharga Group - Takwahani Formation

ITF - Clastic Sedimentary Rock

- ITF1 Cobble conglomerate
- ITF2 Siltstone, shale and argillite
- ITF3 Sandstone
- ITF4 Limestone

LOWER JURASSIC

Simeu Formation

- uTSF Limestone and Lesser Clastic Rock
- uTSF1 Limestone
- uTSF2 Argillite
- uTSF3 Boulder conglomerate

Stuhal Group

uTMV - Mafic Volcanic Rock

- uTMV1 Pillow basalt
- uTMV2 Andesitic lapilli tuff
- uTMV3 Monzonite andesite
- uTMV4 Feldspar-aegirite porphyry

uTMS - Marine Sedimentary Rock

- uTMS1 Interbedded siltstone, feldspathic arenite and wacke
- uTMS2 Argillite

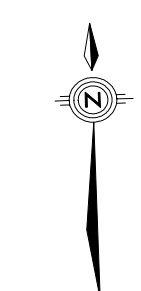
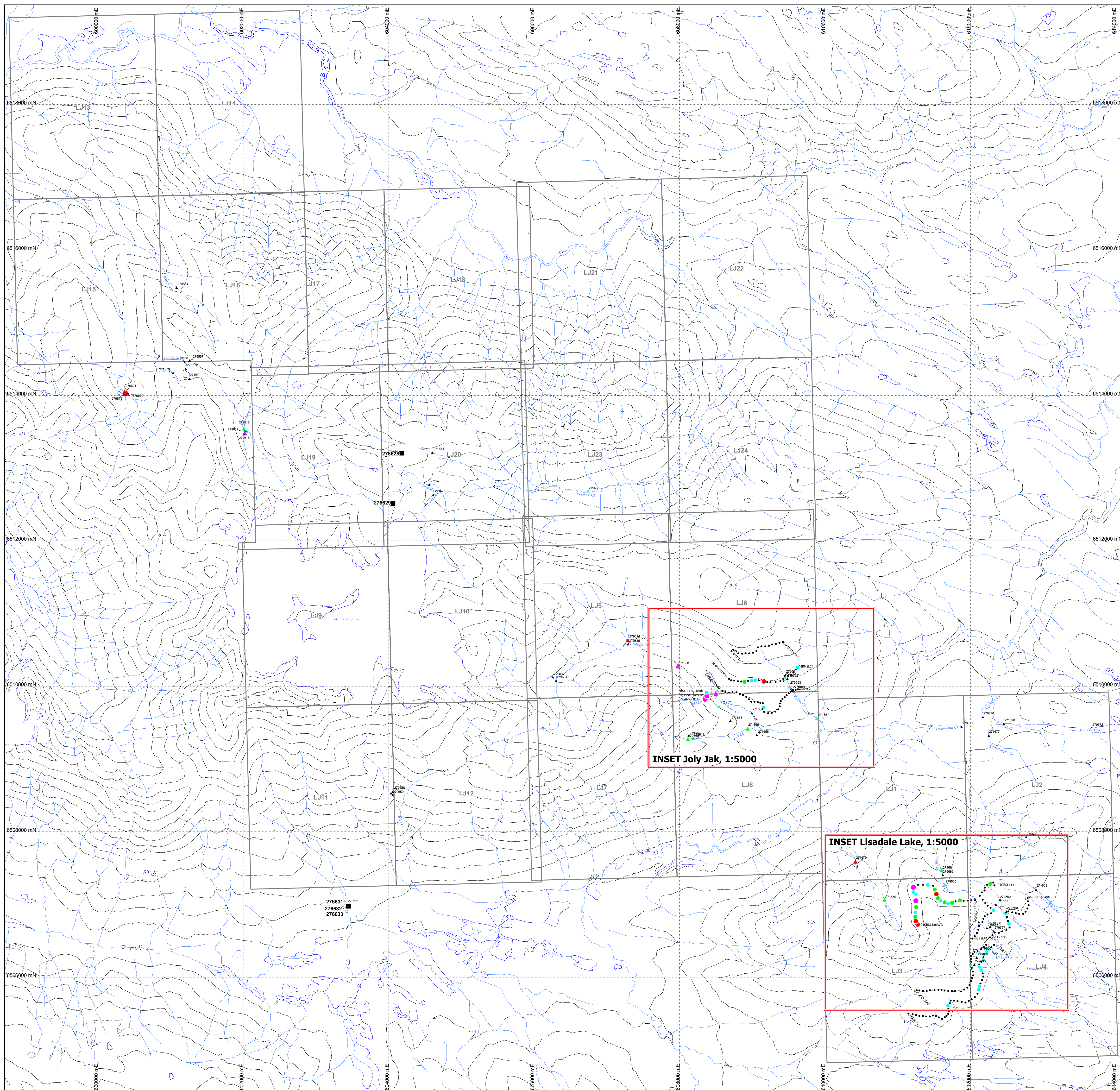
Geological Symbols:

- Fault, thrust
- Major fault, normal
- Geological contact
- Antiform, Synform
- Bidding
- Foliation
- Dyke
- Vein
- Fold Axis
- Lineation

Scale: 0 50 100 150 200 metres

Rock Geochemistry Assays

SAMPLE ID	Au_ppm	Ag_ppm	As_ppm	Cu_ppm	Mo_ppm	Pb_ppm	Sb_ppm	Zn_ppm
276536	10.7	2.2	29	473	0.5	19	2	38
276537	0.029	0.3	4	243	2	24	1	66
276538	0.122	0.8	2	300	1	134	2	1,370
276539	0.018	0.1	483	269	0.5	14	4	94
276540	0.008	0.1	5	85	2	21	1	82
276541	0.0025	1.4	408	1,560	5	15	1	26
276542	0.0025	2.1	29	574	3	21	1	100,000
276543	0.01	1.4	3,480	958	8	21	4	13,300
276544	0.0025	1.2	172	1,230	20	20	1	477
276625	0.0025	0.1	34	95	1	8	4	176
276626	0.0025	0.1	21	106	2	9	2	81
276627	0.037	0.1	9	43	1	14	3	64
276630	0.0025	0.1	2	5	1	5	3	45

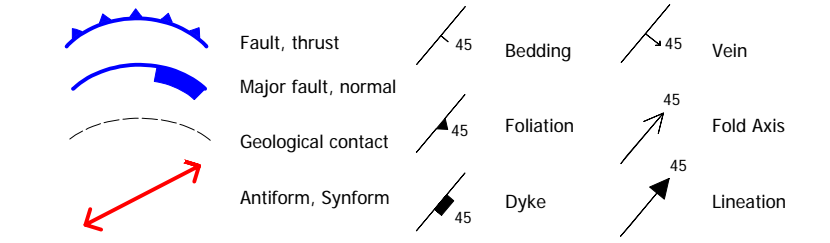


Rock Geochemistry Assays

SAMPLE ID	Au_ppm	Ag_ppm	As_ppm	Cu_ppm	Mo_ppm	Pb_ppm	Sb_ppm	Zn_ppm
276628	0.0025	0.1	1	128	0.5	4	1	73
276629	0.0025	0.1	55	42	0.5	2	1	27
276631	0.037	55.3	257	1,050	1	35,600	47	32,200
276632	0.045	2.5	70	69	14	93	11	118
276633	0.0025	0.4	16	79	1	114	1	122

Lithologic Units

- TERTIARY**
- Intrusive Rocks**
- uTIN1 Basalt/andesite dykes
- Sloko Suite Intrusive Rocks**
- uTIN2 Coarse-grained quartz-feldspar-biotite porphyry
- LATE CRETACEOUS**
- Windy Table Suite Intrusive Rocks**
- ukIN1 Monzonite and diorite
- ukIN2 Biotite-hornblende granodiorite
- ukIN3 Aegle-bearing diorite porphyry
- Windy Table Suite Volcanic and Related Sedimentary Rocks**
- uKSV Subaerial Volcanic Rock
- uKSV1 Dacitic/andesitic tuff, lapilli tuff and block tuff
- uKSV2 Unaltered rhyolite tuff and agglomerate
- uKSV3 Weathered lapilli tuff or crystal tuff
- uKSV4 Dacite to andesite flow
- uKSV5 Rhyolite flow
- uKSV6 Volcaniclastic rocks
- uKPO Granodiorite Porphyry
- uKPO1 Coarse-grained feldspar-quartz-biotite porphyry
- uKPO2 Fine-grained feldspar-quartz-biotite porphyry
- LOWER to MIDDLE JURASSIC**
- Lalberge Group - Takwahoni Formation**
- Clastic Sedimentary Rock**
- uTF1 Cobble conglomerate
- uTF2 Siltstone, shale and argillite
- uTF3 Sandstone
- uTF4 Limestone
- UPPER TRIASSIC**
- Sinew Formation**
- uTSF Limestone and Lesser Clastic Rock
- uTSF1 Limestone
- uTSF2 Argillite
- uTSF3 Boulder conglomerate
- Stuhini Group**
- uTMV Mafic Volcanic Rock
- uTMV1 Pillow basalt
- uTMV2 Andesitic lapilli tuff
- uTMV3 Massive andesite
- uTMV4 Feldspar augite porphyry
- uTMS Marine Sedimentary Rock
- uTMS1 Interbedded siltstone, feldspathic arenite and wacke
- uTMS2 Argillite

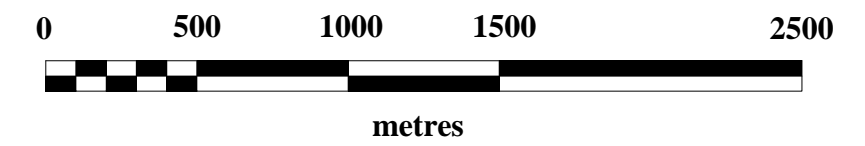


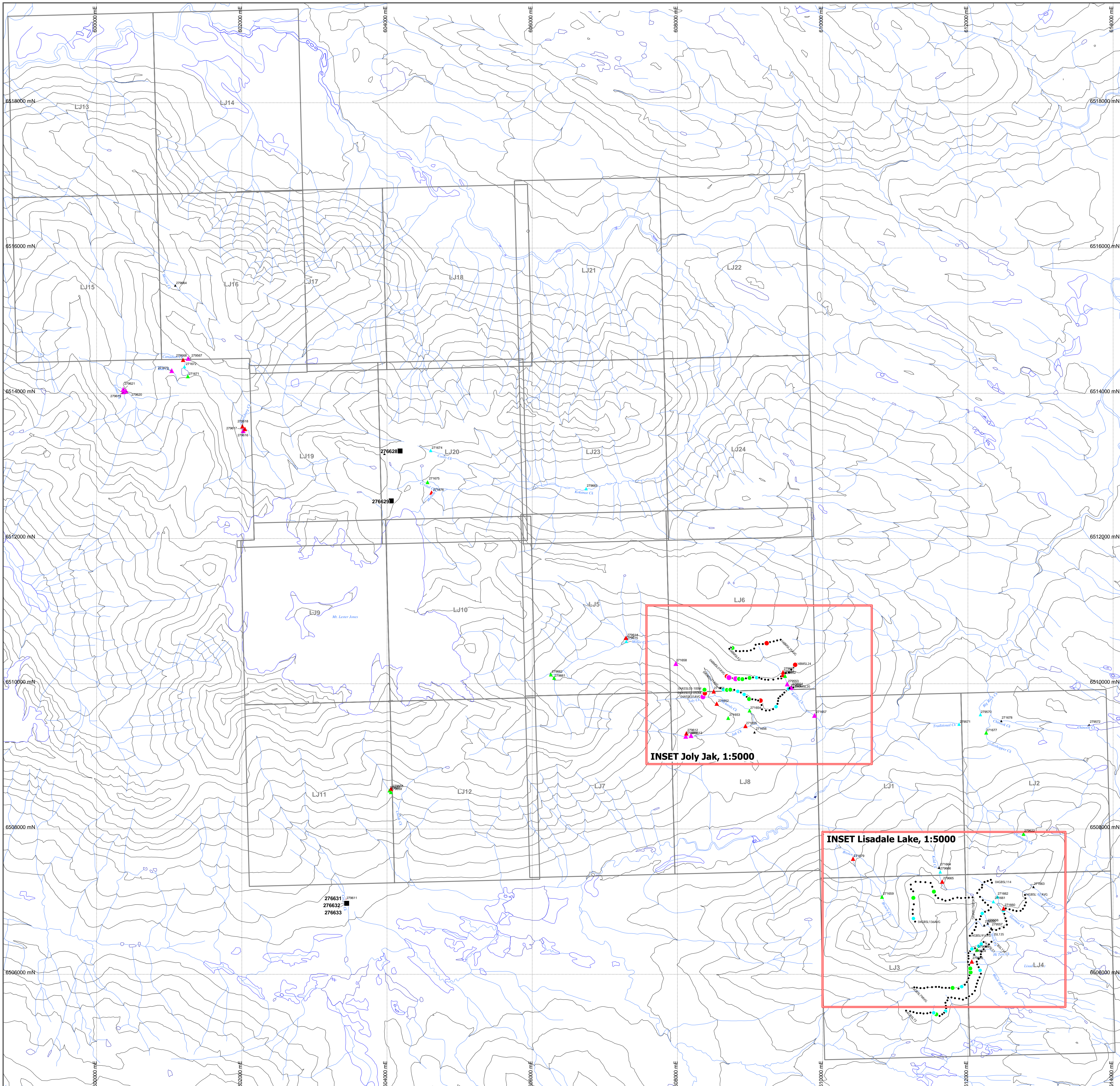
Sutlahine 2004 Silt Geochemistry Gold ppm

- ▲ > 0.065 ppm (99th %ile) (7)
- ▲ 0.04 to 0.065 (95th %ile) (6)
- ▲ 0.02 to 0.04 (50th %ile) (10)
- ▲ 0.01 to 0.02 (50th %ile) (14)
- ▲ all others (53)

Sutlahine 2004 Soil Geochemistry Gold ppm

- 0.088 (98th %ile) (11)
- 0.033 to 0.0878 (95th %ile) (17)
- 0.0194 to 0.033 (90th %ile) (23)
- 0.009 to 0.0194 (80th %ile) (64)
- all others (389)



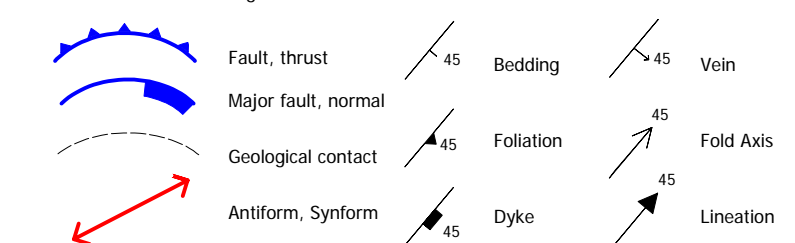


Rock Geochemistry Assays

SAMPLE_ID	Au_ppm	Ag_ppm	As_ppm	Cu_ppm	Mo_ppm	Pb_ppm	Sb_ppm	Zn_ppm
276628	0.0025	0.1	1	128	0.5	4	1	73
276629	0.0025	0.1	55	42	0.5	2	1	27
276631	0.037	55.3	257	1,050	1	35,600	47	32,200
276632	0.045	2.5	70	69	14	93	11	118
276633	0.0025	0.4	16	79	1	114	1	122

Lithologic Units

- INTRUSIVE**
- Intrusive Rocks**
 - UTN1 Basalt/androsite dykes
 - Soko Suite Intrusive Rocks**
 - UTN2 Coarse-grained quartz-feldspar-biotite porphyry
- LATE CRETACEOUS**
- Windy Table Suite Intrusive Rocks**
 - UKN1 Monzonite and diorite
 - UKN2 Biotite hornblende granodiorite
 - UKN3 Aegite bearing diorite porphyry
 - Windy Table Suite Volcanic and Related Sedimentary Rocks**
 - UKSV Subaerial Volcanic Rock
 - UKSV1 Euxaline andesite tuff, lapilli tuff and block tuff
 - UKSV2 Unaltered rhyolitic tuff and agglomerate
 - UKSV3 Weathered lapilli tuff or crystal tuff
 - UKSV4 Dacite to andesite flow
 - UKSV5 Rhyolite flow
 - UKSV6 Volcaniclastic rocks
- UKPO Granodiorite Porphyry**
- UKPO1 Coarse-grained feldspar-quartz-biotite porphyry
 - UKPO2 Fine-grained feldspar-quartz-biotite porphyry
- LOWER to MIDDLE JURASSIC**
- Laberge Group - Takwahoni Formation**
 - UTF Clastic Sedimentary Rock
 - UTF1 Cobble conglomerate
 - UTF2 Siltstone, shale and argillite
 - UTF3 Sandstone
 - UTF4 Limestone
- UPPER TRIASSIC**
- Silva Formation**
 - UTSF Limestone and Lesser Clastic Rock
 - UTSF1 Limestone
 - UTSF2 Argillite
 - UTSF3 Boulder conglomerate
 - Stuhini Group**
 - UTMV Mafic Volcanic Rock
 - UTMV1 Pillow basalt
 - UTMV2 Andesitic lapilli tuff
 - UTMV3 Massive andesite
 - UTMV4 Feldspar-argite porphyry
 - UTMS Marine Sedimentary Rock
 - UTMS1 Interbedded siltstone, feldspathic arenite and wacke
 - UTMS2 Argillite

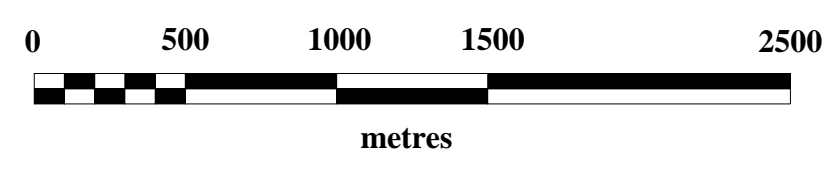


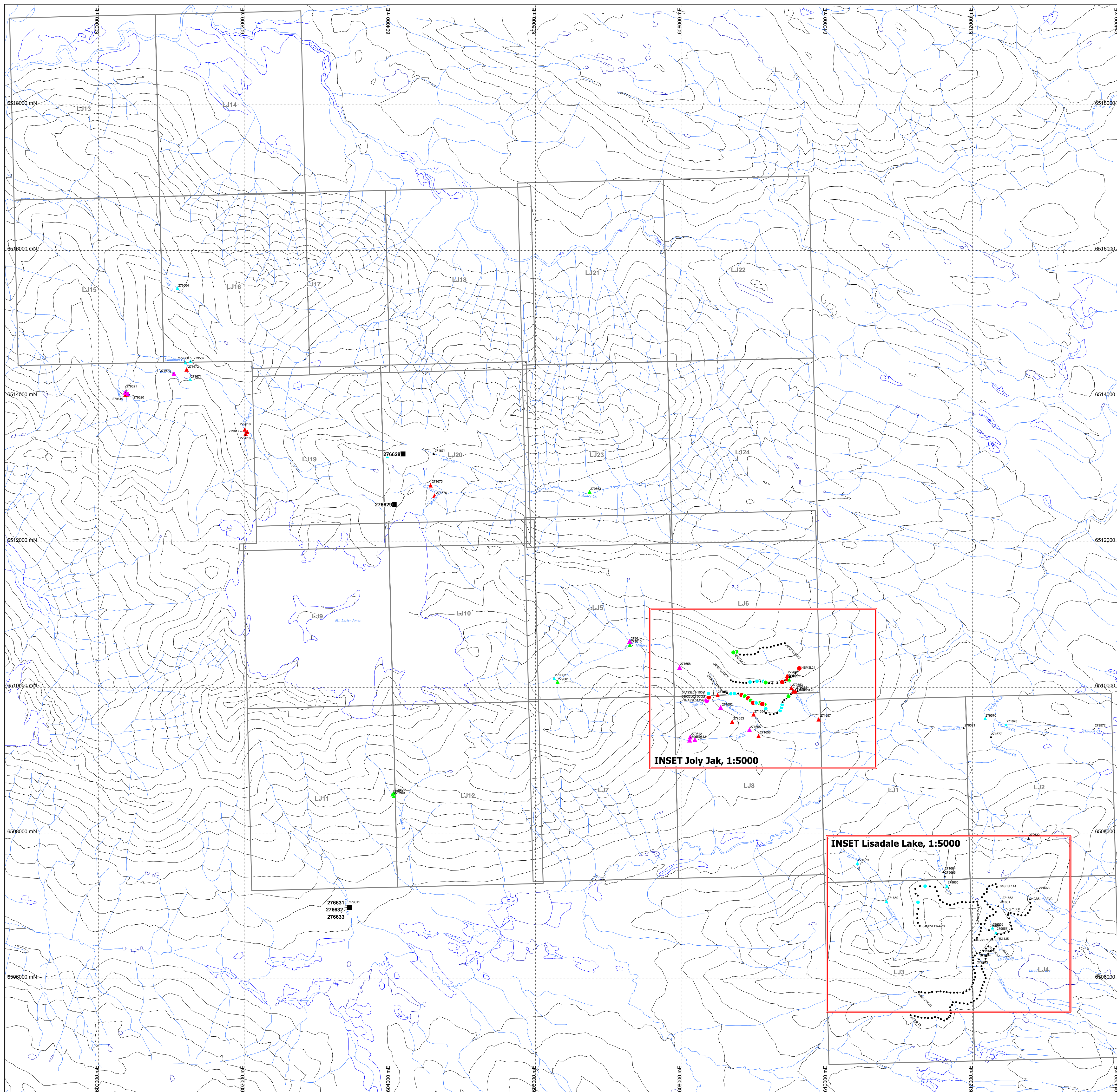
Sutlahine 2004 Silt Geochemistry Silver ppm

- > 0.9 (99th %ile) (19)
- 0.4 to 0.9 (95th %ile) (29)
- 0.3 to 0.4 (90th %ile) (16)
- 0.2 to 0.3 (80th %ile) (14)
- all others (14)

Sutlahine 2004 Soil Geochemistry Silver ppm

- > 1.77 (98th %ile) (11)
- 0.9 to 1.77 (95th %ile) (17)
- 0.6 to 0.9 (90th %ile) (41)
- 0.4 to 0.6 (80th %ile) (68)
- all others (370)



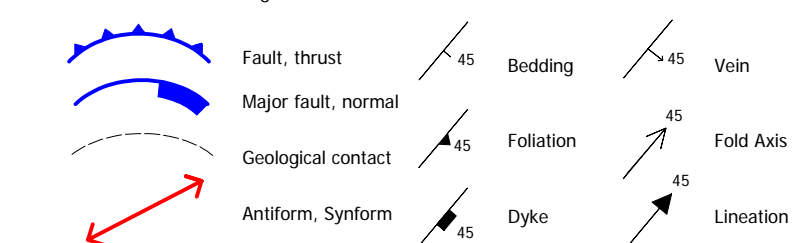


Rock Geochemistry Assays

SAMPLE_ID	Au_ppm	Ag_ppm	As_ppm	Cu_ppm	Mo_ppm	Pb_ppm	Sb_ppm	Zn_ppm
276628	0.0025	0.1	1	128	0.5	4	1	73
276629	0.0025	0.1	55	42	0.5	2	1	27
276631	0.037	55.3	257	1,050	1	35,600	47	32,200
276632	0.045	2.5	70	69	14	93	11	118
276633	0.0025	0.4	16	79	1	114	1	122

Lithologic Units

- INTRUSIVE**
- Intrusive Rocks**
- UTN1 Basalt/androsite dykes
 - UTN2 **Soko Suite Intrusive Rocks**
 - UTN2 Coarse-grained quartz-feldspar-biotite porphyry
- LATE CRETACEOUS**
- Windy Table Suite Intrusive Rocks**
- UKN1 Monzonite and diorite
 - UKN2 biotite-hornblende granodiorite
 - UKN3 Aegite bearing diorite porphyry
- Windy Table Suite Volcanic and Related Sedimentary Rocks**
- UKSV **Subaerial Volcanic Rock**
 - UKSV1 Eudiac/andesitic tuff, lapilli tuff and block tuff
 - UKSV2 Unaltered rhyolitic tuff and agglomerate
 - UKSV3 Weathered lapilli tuff or crystal tuff
 - UKSV4 Dacite to andesite flow
 - UKSV5 Rhyolite flow
 - UKSV6 Volcaniclastic rocks
- UKPO **Granodiorite Porphyry**
 - UKPO1 Coarse-grained feldspar-quartz-biotite porphyry
 - UKPO2 Fine-grained feldspar-quartz-biotite porphyry
- LOWER to MIDDLE JURASSIC**
- Lakeport Group - Takahani Formation**
- UTF **Clastic Sedimentary Rock**
 - UTF1 Cobble conglomerate
 - UTF2 Siltstone, shale and argillite
 - UTF3 Sandstone
 - UTF4 Limestone
- UPPER TRIASSIC**
- Snow Formation**
- UTSF **Limestone and Lesser Clastic Rock**
 - UTSF1 Limestone
 - UTSF2 Argillite
 - UTSF3 Boulder conglomerate
- Stuhini Group**
- UTMV **Mafic Volcanic Rock**
 - UTMV1 Pillow basalt
 - UTMV2 Andesitic lapilli tuff
 - UTMV3 Massive andesite
 - UTMV4 Feldspar-argillite porphyry
 - UTMS **Marine Sedimentary Rock**
 - UTMS1 Interbedded siltstone, feldspathic arenite and wacke
 - UTMS2 Argillite

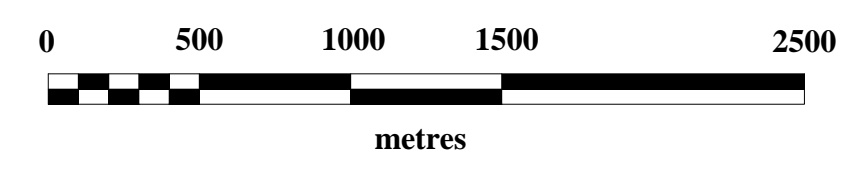


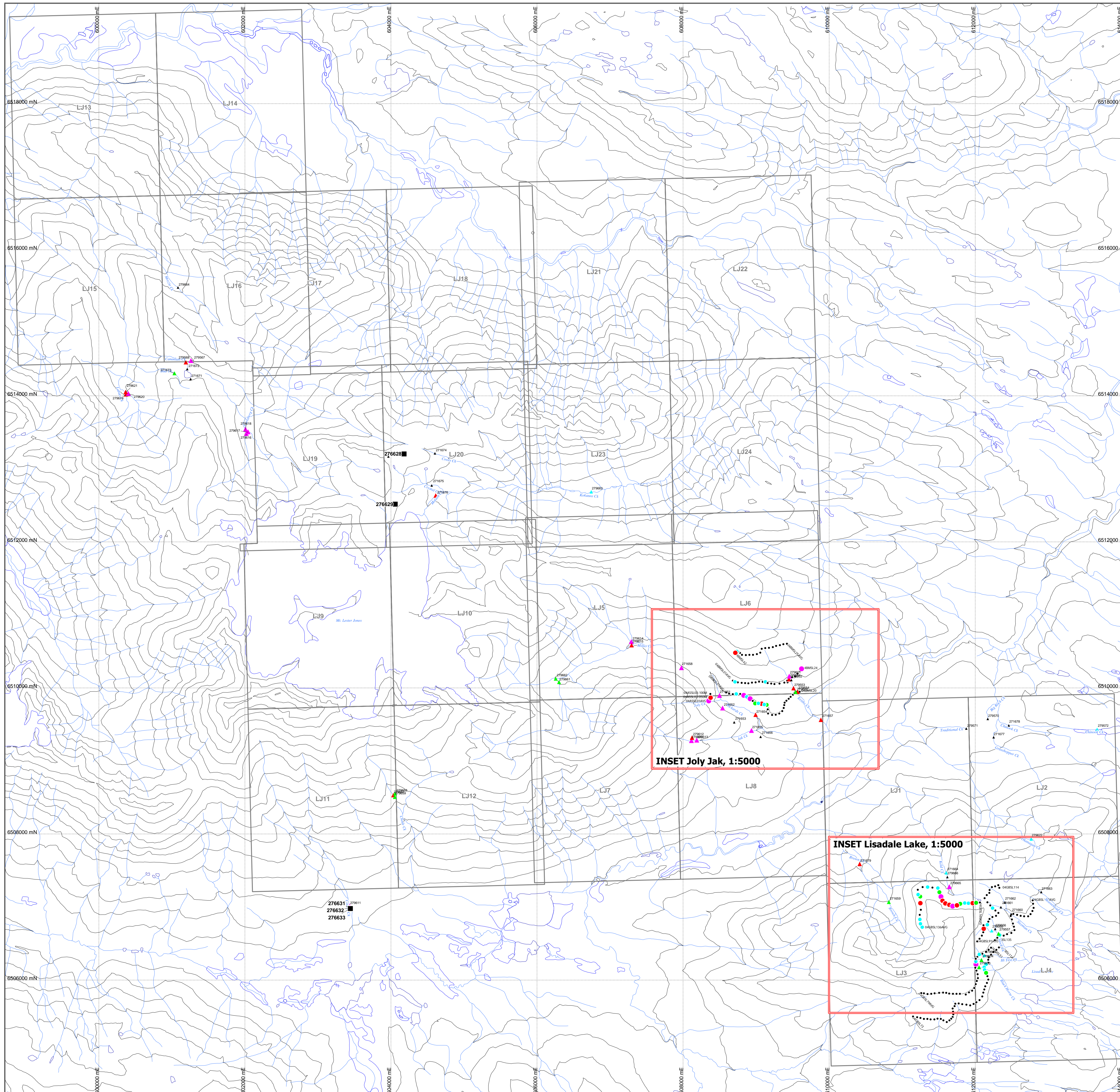
Sutlahine 2004 Silt Geochemistry Arsenic ppm

- > 270 (99th %tile) (20)
- 97 to 270 (95th %tile) (30)
- 56 to 97 (80th %tile) (110)
- 30 to 56 (80th %tile) (16)
- all others (16)

Sutlahine 2004 Soil Geochemistry Arsenic ppm

- > 606.16 (99th %tile) (11)
- 353.55 to 606.16 (95th %tile) (15)
- 216.2 to 353.55 (90th %tile) (25)
- 93.4 to 216.2 (80th %tile) (51)
- all others (405)





Rock Geochemistry Assays

SAMPLE_ID	Au_ppm	Ag_ppm	As_ppm	Cu_ppm	Mo_ppm	Pb_ppm	Sb_ppm	Zn_ppm
276628	0.0025	0.1	1	128	0.5	4	1	73
276629	0.0025	0.1	55	42	0.5	2	1	27
276631	0.037	55.3	257	1,050	1	35,600	47	32,200
276632	0.045	2.5	70	69	14	93	11	118
276633	0.0025	0.4	16	79	1	114	1	122

Lithologic Units

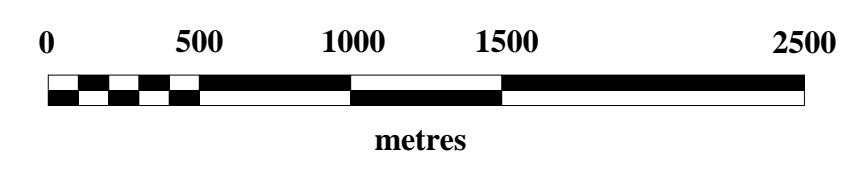
- TERTIARY**
- Intrusive Rocks**
- UTN1 Basalt/androsite dykes
 - UTN2 Sloko Suite Intrusive Rocks
 - UTN3 Coarse-grained quartz-feldspar-biotite porphyry
- LATE-CRETACEOUS**
- Windy Table Suite Intrusive Rocks**
- UKN1 Monzonite and diorite
 - UKN2 Biotite hornblende granodiorite
 - UKN3 Aegite bearing diorite porphyry
- Windy Table Suite Volcanic and Related Sedimentary Rocks**
- UKSV Subaerial Volcanic Rock
 - UKSV1 Dacitic/andesitic tuff, lapilli tuff and block tuff
 - UKSV2 Unaltered rhyolitic tuff and agglomerate
 - UKSV3 Weathered lapilli tuff or crystal tuff
 - UKSV4 Diatase to androsite flow
 - UKSV5 Rhyolite flow
 - UKSV6 Volcaniclastic rocks
- UKPO Granodiorite Porphyry**
- UKPO1 Coarse-grained feldspar-quartz-biotite porphyry
 - UKPO2 Fine-grained feldspar-quartz-biotite porphyry
- LOWER TO MIDDLE JURASSIC**
- Laberge Group - Takahani Formation**
- Clastic Sedimentary Rock**
- UTF1 Cobble conglomerate
 - UTF2 Siltstone, shale and argillite
 - UTF3 Sandstone
 - UTF4 Limestone
- UPPER TRIASSIC**
- Snow Formation**
- UTSF Limestone and Lesser Clastic Rock
 - UTSF1 Limestone
 - UTSF2 Argillite
 - UTSF3 Boulder conglomerate
- Stuhini Group**
- Mafic Volcanic Rock**
- UTMV1 Pillow basalt
 - UTMV2 Andrositic lapilli tuff
 - UTMV3 Massive androsite
 - UTMV4 Feldspar-argillite porphyry
- Marine Sedimentary Rock**
- UTMS1 Interbedded siltstone, feldspathic arenite and wacke
 - UTMS2 Argillite
- Structural Symbols**
- Fault, thrust
 - Major fault, normal
 - Geological contact
 - Antiform, Synform
 - Bedding
 - Foliation
 - Dyke
 - Vein
 - Fold Axis
 - Lamination

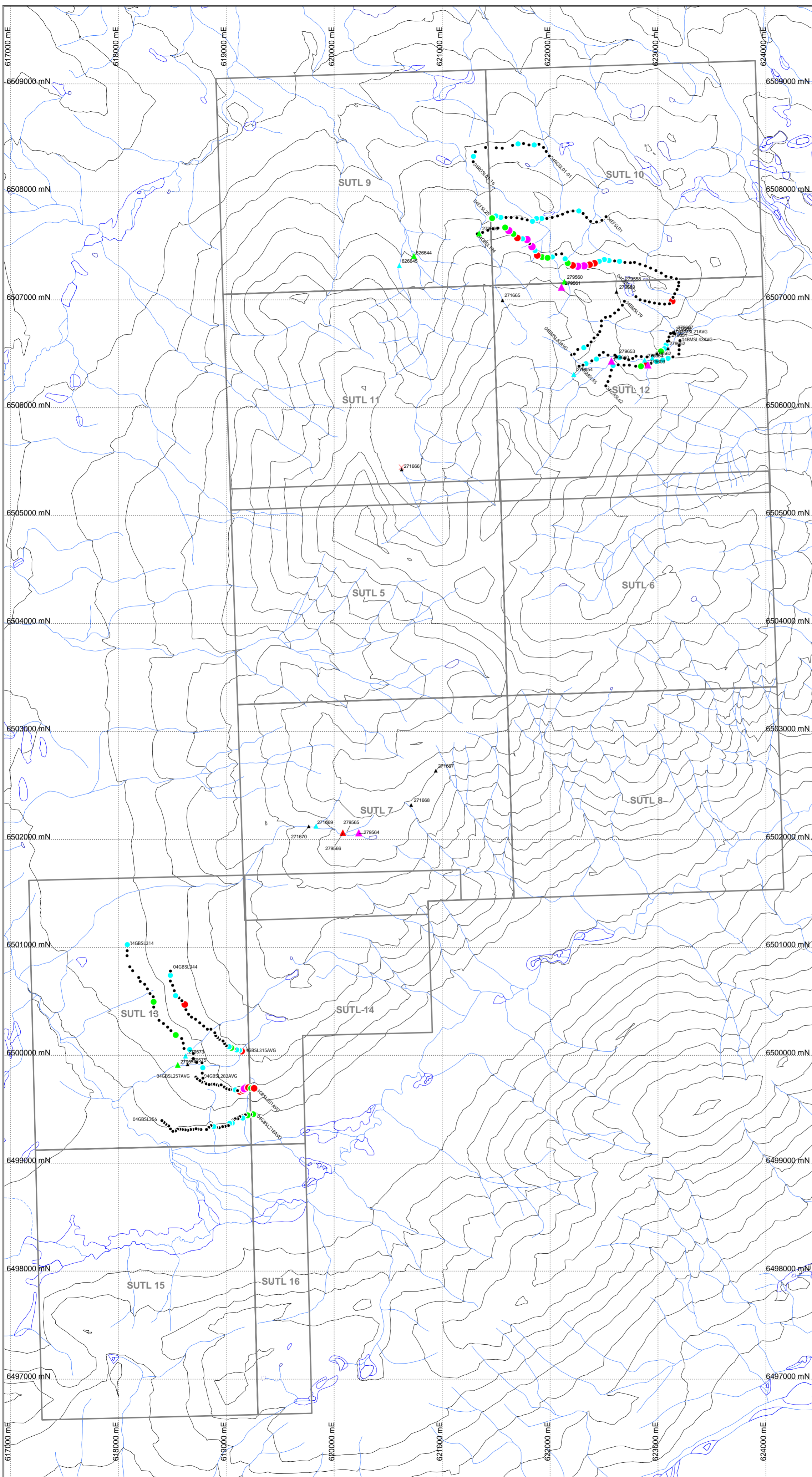
Sutlahine 2004 Silt Geochemistry Lead ppm

- > 67 (99th %ile) (22)
- 39 to 67 (95th %ile) (18)
- 28 to 39 (90th %ile) (12)
- 17 to 28 (80th %ile) (12)
- all others (28)

Sutlahine 2004 Soil Geochemistry Lead ppm

- > 91 (98th %ile) (11)
- 52.7 to 91 (95th %ile) (15)
- 36 to 52.7 (90th %ile) (26)
- 27 to 36 (80th %ile) (54)
- all others (401)





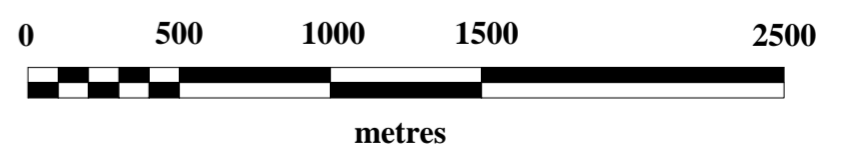
- ### Lithologic Units
- TERTIARY**
- Intrusive Rocks**
- uTIN1 Basalt/andesite dykes
- Sloko Suite Intrusive Rocks**
- uTIN2 Coarse-grained quartz-feldspar-biotite porphyry
- LATE CRETACEOUS**
- Windy Table Suite Intrusive Rocks**
- uKIN1 Monzonite and diorite
 - uKIN2 Biotite-hornblende granodiorite
 - uKIN3 Augite bearing diorite porphyry
- Windy Table Suite Volcanic and Related Sedimentary Rocks**
- uKSV Subaerial Volcanic Rock**
- uKSV1 Dacitic/andesitic tuff, lapilli tuff and block tuff
 - uKSV2 Unaltered rhyolitic tuff and agglomerate
 - uKSV3 Weathered lapilli tuff or crystal tuff
 - uKSV4 Dacite to andesite flow
 - uKSV5 Rhyolite flow
 - uKSV6 Volcaniclastic rocks
- uKPO Granodiorite Porphyry**
- uKPO1 Coarse-grained feldspar-quartz-biotite porphyry
 - uKPO2 Fine-grained feldspar-quartz-biotite porphyry
- LOWER to MIDDLE JURASSIC**
- Laberge Group - Takwahoni Formation**
- uJTF Clastic Sedimentary Rock**
- uJTF1 Cobble conglomerate
 - uJTF2 Siltstone, shale and argillite
 - uJTF3 Sandstone
 - uJTF4 Limestone
- UPPER TRIASSIC**
- Sinwa Formation**
- uTSF Limestone and Lesser Clastic Rock**
- uTSF1 Limestone
 - uTSF2 Argillite
 - uTSF3 Boulder conglomerate
- Stuhini Group**
- uTMV Mafic Volcanic Rock**
- uTMV1 Pillow basalt
 - uTMV2 Andesitic lapilli tuff
 - uTMV3 Massive andesite
 - uTMV4 Feldspar-augite porphyry
- uTMS Marine Sedimentary Rock**
- uTMS1 Interbedded siltstone, feldspathic arenite and wacke
 - uTMS2 Argillite
- Structural Symbols**
- Fault, thrust
 - Major fault, normal
 - Geological contact
 - Antiform, Synform
 - Bedding
 - Foliation
 - Dyke
 - Vein
 - Fold Axis
 - Lineation

Sutlahine 2004 Silt Geochemistry Gold ppm

- ▲ > 0.065 ppm (99th %tile) (7)
- ▲ 0.04 to 0.065 (95th %tile) (6)
- ▲ 0.02 to 0.04 (90th %tile) (10)
- ▲ 0.01 to 0.02 (80th %tile) (14)
- ▲ all others (53)

Sutlahine 2004 Soil Geochemistry Gold ppm

- > 0.088 (98th %tile) (11)
- 0.033 to 0.0878 (95th %tile) (17)
- 0.0194 to 0.033 (90th %tile) (23)
- 0.009 to 0.0194 (80th %tile) (64)
- all others (389)

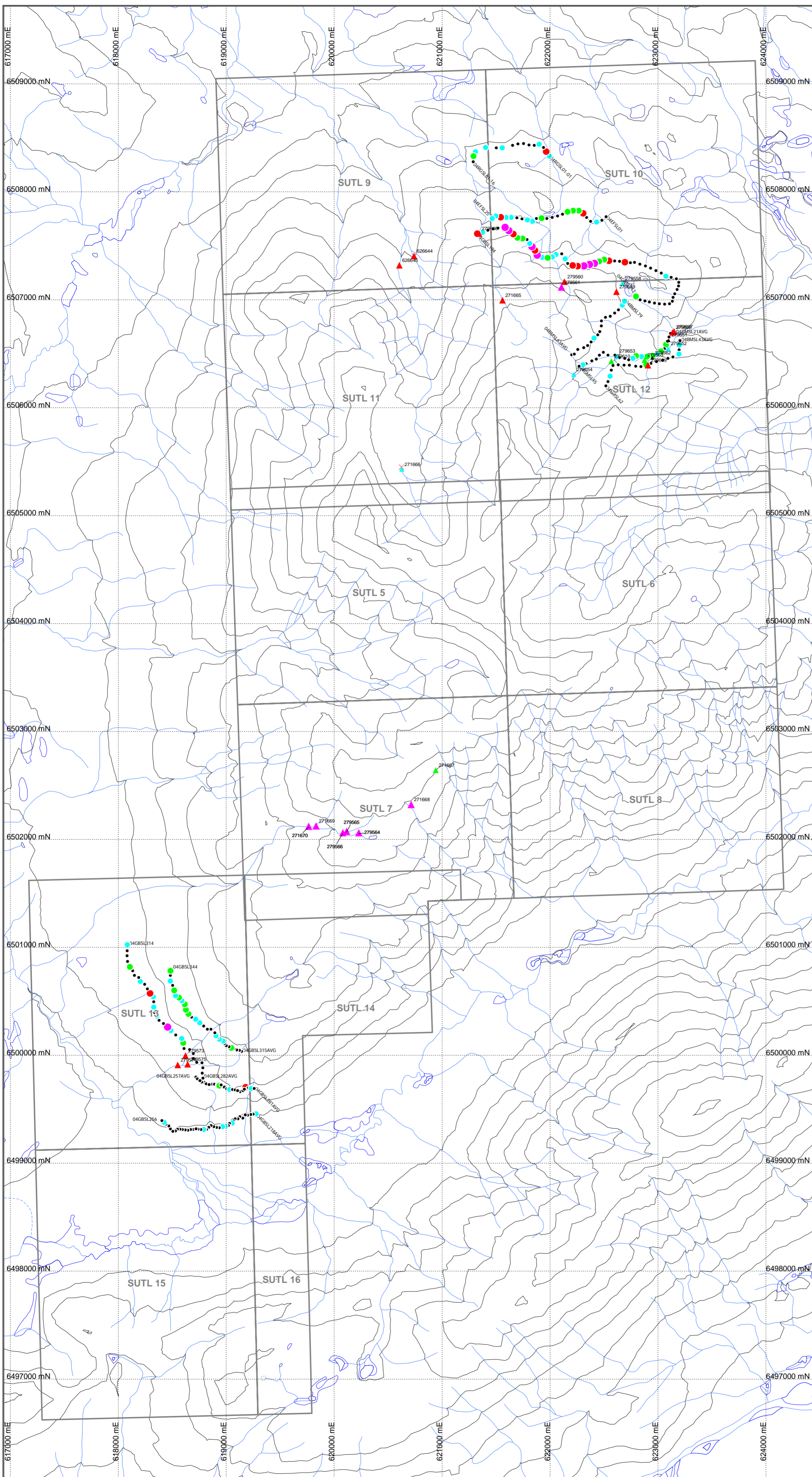


RIMFIRE MINERALS CORPORATION

SUTLAHINE Project
SUTL Claims
Silt and Soil
Gold (ppm) Geochemistry

DATE: DEC 2004 SCALE: 1:5,000 Figure
 DRAWN BY: ATLN
 CHECKED BY: ATLN
 APPROVED BY: ATLN
 PROJECT NO: 104K/10 Date Printed: BC

7a



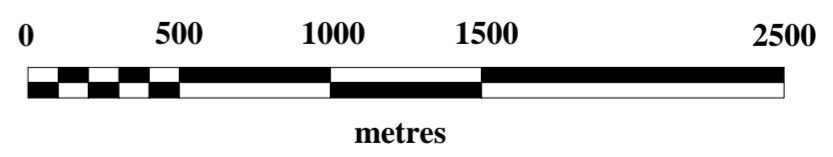
- ### Lithologic Units
- TERTIARY**
- Intrusive Rocks**
- uTIN1 Basalt/andesite dykes
- Sloko Suite Intrusive Rocks**
- uTIN2 Coarse-grained quartz-feldspar-biotite porphyry
- LATE CRETACEOUS**
- Windy Table Suite Intrusive Rocks**
- uKIN1 Monzonite and diorite
 - uKIN2 Biotite-hornblende granodiorite
 - uKIN3 Augite bearing diorite porphyry
- Windy Table Suite Volcanic and Related Sedimentary Rocks**
- uKSV Subaerial Volcanic Rock**
- uKSV1 Dacitic/andesitic tuff, lapilli tuff and block tuff
 - uKSV2 Unaltered rhyolitic tuff and agglomerate
 - uKSV3 Weathered lapilli tuff or crystal tuff
 - uKSV4 Dacite to andesite flow
 - uKSV5 Rhyolite flow
 - uKSV6 Volcaniclastic rocks
- uKPO Granodiorite Porphyry**
- uKPO1 Coarse-grained feldspar-quartz-biotite porphyry
 - uKPO2 Fine-grained feldspar-quartz-biotite porphyry
- LOWER to MIDDLE JURASSIC**
- Laberge Group - Takwahoni Formation**
- uJTF Clastic Sedimentary Rock**
- uJTF1 Cobble conglomerate
 - uJTF2 Siltstone, shale and argillite
 - uJTF3 Sandstone
 - uJTF4 Limestone
- UPPER TRIASSIC**
- Sinwa Formation**
- uTSF Limestone and Lesser Clastic Rock**
- uTSF1 Limestone
 - uTSF2 Argillite
 - uTSF3 Boulder conglomerate
- Stuhini Group**
- uTMV Mafic Volcanic Rock**
- uTMV1 Pillow basalt
 - uTMV2 Andesitic lapilli tuff
 - uTMV3 Massive andesite
 - uTMV4 Feldspar-augite porphyry
- uTMS Marine Sedimentary Rock**
- uTMS1 Interbedded siltstone, feldspathic arenite and wacke
 - uTMS2 Argillite
- Geological Symbols:**
- Fault, thrust
 - Major fault, normal
 - Geological contact
 - Antiform, Synform
 - Bedding
 - Foliation
 - Dyke
 - Vein
 - Fold Axis
 - Lineation

Sutlahine 2004 Silt Geochemistry Silver ppm

- ▲ > 0.9 (99th %tile) (19)
- ▲ 0.4 to 0.9 (95th %tile) (29)
- ▲ 0.3 to 0.4 (90th %tile) (16)
- ▲ 0.2 to 0.3 (80th %tile) (14)
- ▲ all others (14)

Sutlahine 2004 Soil Geochemistry Silver ppm

- > 1.77 (98th %tile) (11)
- 0.9 to 1.77 (95th %tile) (17)
- 0.6 to 0.9 (90th %tile) (41)
- 0.4 to 0.6 (80th %tile) (68)
- all others (370)

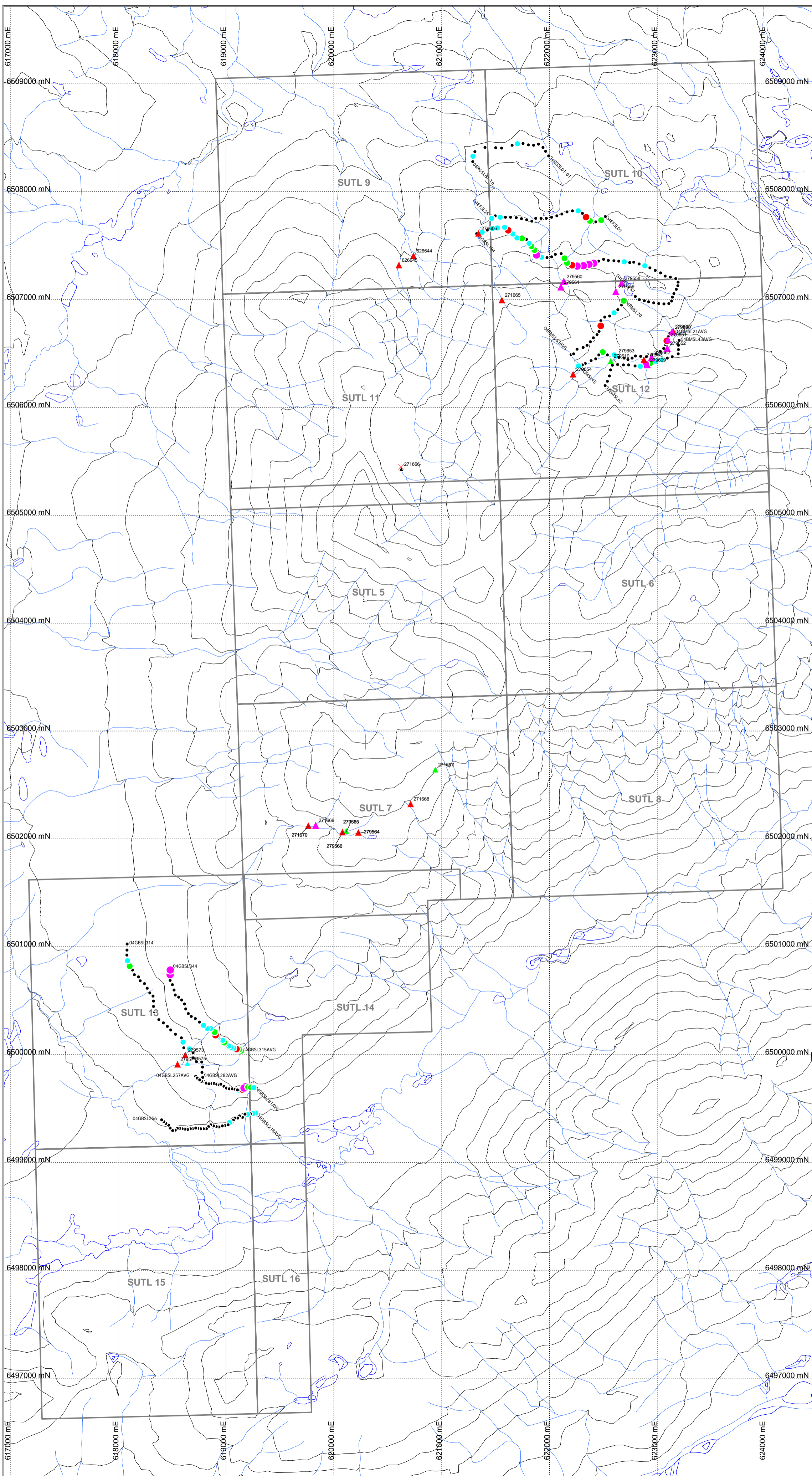


RIMFIRE MINERALS CORPORATION

SUTLAHINE Project
SUTL Claims
Silt and Soil
Silver (ppm) Geochemistry

DATE	DEC 2004	SCALE	1:5,000
DRAWN BY	ATL/JM	CHECKED BY	ATL/JM
PROJECT NO.	104K/10	DATE PLOTTED	BC

7b



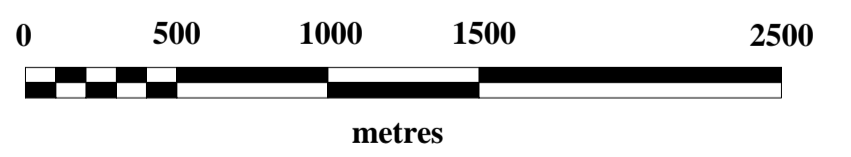
- ### Lithologic Units
- TERTIARY**
- Intrusive Rocks**
- uTIN1 Basalt/andesite dykes
- Sloko Suite Intrusive Rocks**
- uTIN2 Coarse-grained quartz-feldspar-biotite porphyry
- LATE CRETACEOUS**
- Windy Table Suite Intrusive Rocks**
- uKIN1 Monzonite and diorite
 - uKIN2 Biotite-hornblende granodiorite
 - uKIN3 Augite bearing diorite porphyry
- Windy Table Suite Volcanic and Related Sedimentary Rocks**
- uKSV Subaerial Volcanic Rock**
- uKSV1 Dacitic/andesitic tuff, lapilli tuff and block tuff
 - uKSV2 Unaltered rhyolitic tuff and agglomerate
 - uKSV3 Weathered lapilli tuff or crystal tuff
 - uKSV4 Dacite to andesite flow
 - uKSV5 Rhyolite flow
 - uKSV6 Volcaniclastic rocks
- uKPO Granodiorite Porphyry**
- uKPO1 Coarse-grained feldspar-quartz-biotite porphyry
 - uKPO2 Fine-grained feldspar-quartz-biotite porphyry
- LOWER to MIDDLE JURASSIC**
- Laberge Group - Takwahoni Formation**
- uJTF Clastic Sedimentary Rock**
- uJTF1 Cobble conglomerate
 - uJTF2 Siltstone, shale and argillite
 - uJTF3 Sandstone
 - uJTF4 Limestone
- UPPER TRIASSIC**
- Sinwa Formation**
- uTSF Limestone and Lesser Clastic Rock**
- uTSF1 Limestone
 - uTSF2 Argillite
 - uTSF3 Boulder conglomerate
- Stuhini Group**
- uTMV Mafic Volcanic Rock**
- uTMV1 Pillow basalt
 - uTMV2 Andesitic lapilli tuff
 - uTMV3 Massive andesite
 - uTMV4 Feldspar-augite porphyry
- uTMS Marine Sedimentary Rock**
- uTMS1 Interbedded siltstone, feldspathic arenite and wacke
 - uTMS2 Argillite
- Geological Symbols:**
- Fault, thrust
 - Major fault, normal
 - Geological contact
 - Antiform, Synform
 - Bedding
 - Foliation
 - Dyke
 - Vein
 - Fold Axis
 - Lineation

Sutlahine 2004 Silt Geochemistry

- Arsenic ppm**
- ▲ > 270 (99th %tile) (20)
 - ▲ 97 to 270 (95th %tile) (30)
 - ▲ 56 to 97 (90th %tile) (10)
 - ▲ 30 to 56 (80th %tile) (16)
 - ▲ all others (16)

Sutlahine 2004 Soil Geochemistry

- Arsenic ppm**
- > 606.16 (98th %tile) (11)
 - 353.55 to 606.16 (95th %tile) (15)
 - 216.2 to 353.55 (90th %tile) (25)
 - 93.4 to 216.2 (80th %tile) (51)
 - all others (405)

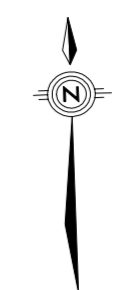
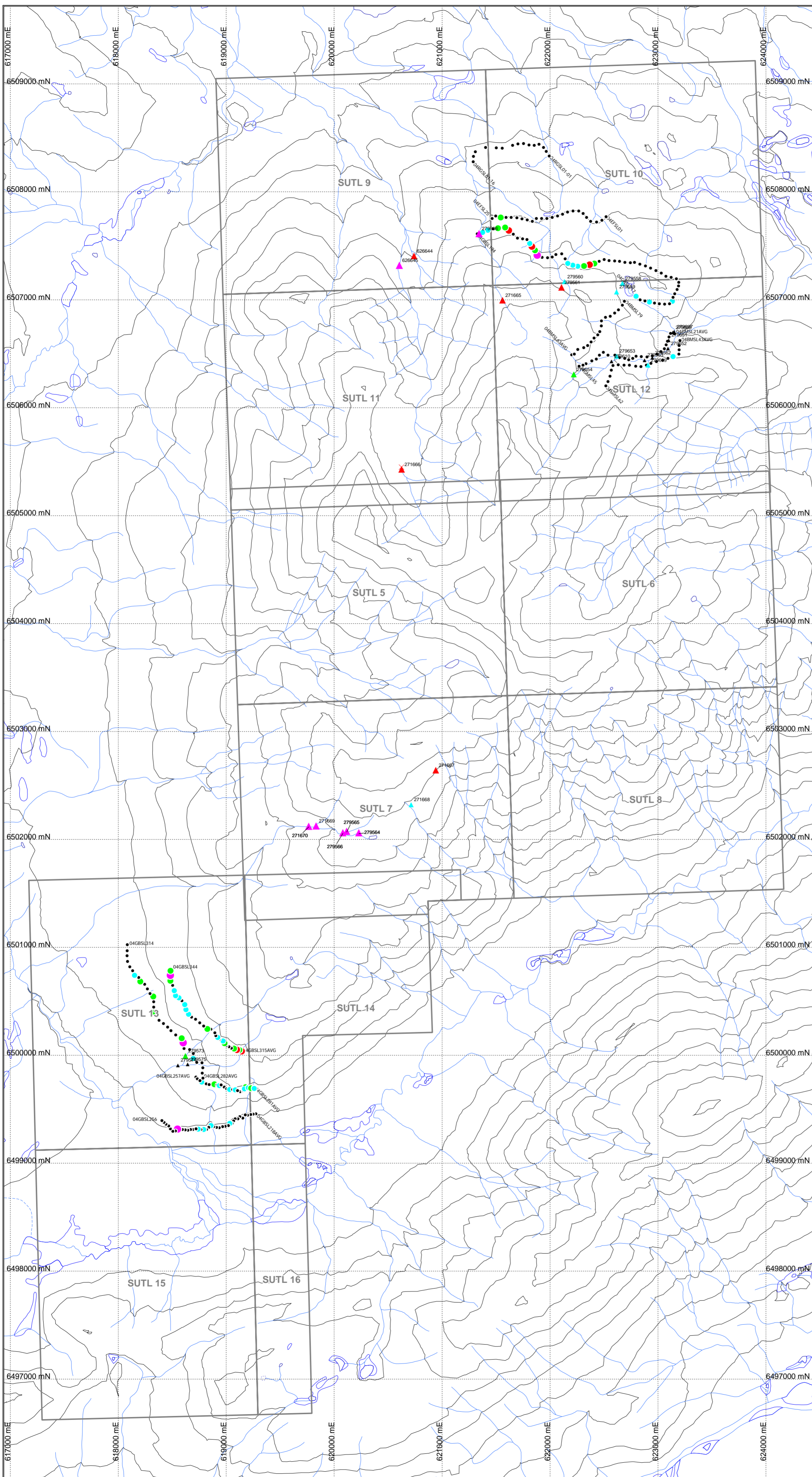


RIMFIRE MINERALS CORPORATION

SUTLAHINE Project
SUTL Claims
Silt and Soil
Arsenic (ppm) Geochemistry

Date	DEC 2004	Scale	1:5,000	Figure	
Drawn	ATLIN	Checked	ATLIN		
Project	104K/10	Province	BC		

7c



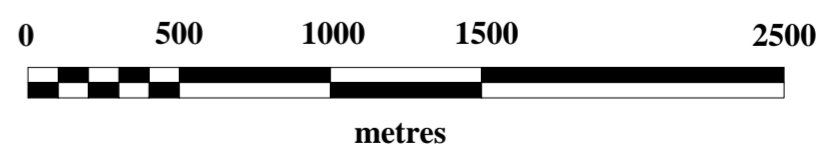
- ### Lithologic Units
- TERTIARY**
- Intrusive Rocks**
- uTIN1 Basalt/andesite dykes
- Sloko Suite Intrusive Rocks**
- uTIN2 Coarse-grained quartz-feldspar-biotite porphyry
- LATE CRETACEOUS**
- Windy Table Suite Intrusive Rocks**
- uKIN1 Monzonite and diorite
 - uKIN2 Biotite-hornblende granodiorite
 - uKIN3 Augite bearing diorite porphyry
- Windy Table Suite Volcanic and Related Sedimentary Rocks**
- uKSV Subaerial Volcanic Rock**
- uKSV1 Dacitic/andesitic tuff, lapilli tuff and block tuff
 - uKSV2 Unaltered rhyolitic tuff and agglomerate
 - uKSV3 Weathered lapilli tuff or crystal tuff
 - uKSV4 Dacite to andesite flow
 - uKSV5 Rhyolite flow
 - uKSV6 Volcaniclastic rocks
- uKPO Granodiorite Porphyry**
- uKPO1 Coarse-grained feldspar-quartz-biotite porphyry
 - uKPO2 Fine-grained feldspar-quartz-biotite porphyry
- LOWER to MIDDLE JURASSIC**
- Laberge Group - Takwahoni Formation**
- JTF Clastic Sedimentary Rock**
- JTF1 Cobble conglomerate
 - JTF2 Siltstone, shale and argillite
 - JTF3 Sandstone
 - JTF4 Limestone
- UPPER TRIASSIC**
- Sinwa Formation**
- uTSF Limestone and Lesser Clastic Rock**
- uTSF1 Limestone
 - uTSF2 Argillite
 - uTSF3 Boulder conglomerate
- Stuhini Group**
- uTMV Mafic Volcanic Rock**
- uTMV1 Pillow basalt
 - uTMV2 Andesitic lapilli tuff
 - uTMV3 Massive andesite
 - uTMV4 Feldspar-augite porphyry
- uTMS Marine Sedimentary Rock**
- uTMS1 Interbedded siltstone, feldspathic arenite and wacke
 - uTMS2 Argillite
- Geological Symbols:**
- Fault, thrust
 - Major fault, normal
 - Geological contact
 - Antiform, Synform
 - Bedding
 - Foliation
 - Dyke
 - Vein
 - Fold Axis
 - Lineation

Sutlahine 2004 Silt Geochemistry Lead ppm

- ▲ > 67 (99th %tile) (22)
- ▲ 39 to 67 (95th %tile) (18)
- ▲ 26 to 39 (90th %tile) (12)
- ▲ 17 to 26 (80th %tile) (12)
- ▲ all others (28)

Sutlahine 2004 Soil Geochemistry Lead ppm

- > 91 (98th %tile) (11)
- 52.7 to 91 (95th %tile) (15)
- 36 to 52.7 (90th %tile) (26)
- 27 to 36 (80th %tile) (54)
- all others (401)



RIMFIRE MINERALS CORPORATION

SUTLAHINE Project
SUTL Claims
Silt and Soil
Lead (ppm) Geochemistry

DATE: DEC 2004 SCALE: 1:5,000 Figure
DRAWN BY: J.M. - NADRS 2004/27 ATJN
CHECKED BY: R.T.S. 104K/10 Date/Projector BC 7d