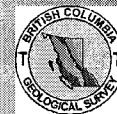


**Geological Survey Branch
Assessment Report Indexing System**



[ARIS11A]

ARIS Summary Report

Regional Geologist, Cranbrook

Date Approved: 2005.07.21

Off Confidential: 2005.12.06

ASSESSMENT REPORT: 27629

Mining Division(s): Greenwood

Property Name: Glove

Location:
NAD 27 **Latitude:** 49 11 53 **Longitude:** 118 27 21 **UTM:** 11 5450274 393938
NAD 83 **Latitude:** 49 11 53 **Longitude:** 118 27 25 **UTM:** 11 5450495 393860
NTS: 082E01W
BCGS: 082E018

Camp: 008 Greenwood Camp

Claim(s): Glove 2

Operator(s): Ingenium Capital BC Ltd.
Author(s): Sookochoff, Laurence

Report Year: 2005

No. of Pages: 25 Pages

**Commodities
Searched For:**

**General
Work Categories:** GEOL, GEOC

Work Done: Geochemical
 ROCK Rock (8 sample(s);)
 Elements Analyzed For : Multielement
 Geological
 GEOL Geological (10.0 ha;)

Keywords: Devonian-Permian, Knob Hill Group, Andesites, Cherts, Argillites

Statement Nos.: 3221478

MINFILE Nos.: 082ESE110, 082ESE179, 082ESE072

Related Reports: 06130, 08883, 11705, 13165, 13546, 16066, 17375, 22349, 23993, 25125, 25563, 25720, 25901, 26172, 26470

INGENIUM CAPITAL CORP.

GEOLOGICAL ASSESSMENT REPORT

on the

GLOVE 2 MINERAL CLAIM

Greenwood Mining Division

NTS 082E018&28

**Vancouver, B.C.
January 20, 2005**

**Sookochoff Consultants Inc.
Laurence Sookochoff, P Eng**

RECEIVED
Gold Commission Report
FEB 8 2005
Commissioner's Office
VANCOUVER, B.C.

GEOLOGICAL SURVEY BRANCH
ASSESSMENT REPORT

27329

INGENIUM CAPITAL CORP.
Geological Assessment Report on the Glover 2 Mineral Claim
 January 20, 2005

Table of Contents

	page
TABLE OF CONTENTS	
Introduction -----	3.
Summary -----	3.
Property Description, Location & Access -----	4.
Climate -----	4.
Physiography and Vegetation -----	4.
Infrastructure -----	4.
Water and Power -----	5.
History -----	5.
Regional Geology -----	8.
Property Geology -----	8.
Alteration -----	9.
Structure -----	9.
Mineralization -----	9.
October 2004 Exploration Program -----	11.
Conclusions -----	18.
Statement of Costs -----	19.
Selected References -----	19.
Certificate -----	20.

Illustrations

Figure 1. Location Map-Glove 2 Claim -----	5.
Figure 2. Claim Map-Glove 2 Claim -----	7.
Figure 3. Index Map-Showing 2004 Work Area -----	in folder.
Figure 4. Sample Locations-----	in folder.

Appendices

Appendix A	Assay Certificate -----	21.
Appendix B	Sample Record Sheet -----	22.

INGENIUM CAPITAL CORP.

Geological Assessment Report on the Glover 2 Mineral Claim

January 20, 2005

INTRODUCTION

During the period of October 25-26, 2004 a geological program of rock sampling was completed on Ingenium Capital Corp.'s Glove 2 mineral claim. The purpose of the program was to sample adjacent rocks adjacent or proximal to the mineralized zone in order to determine the potential for economic mineralization in locations other than the obvious massive sulphide zone.

The information for this report was obtained from pertinent information as cited under bibliography and from information on the results of the work program.

SUMMARY

The Glove 2 mineral claim, owned as to 100% by Ingenium Capital Corp., is comprised of a twenty unit grid claim block with an area of 400 hectares and located in the Pass Creek area 21 km north of Grand Forks, British Columbia, Canada and within five kilometers of the Canada-United States border.

The Glove 2 claim covers ground that has been explored since 1901 which resulted in underground exploratory workings and the delineation of three mineralized zones over a strike length of 400 metres. The claim incorporates the former Simpson mine that includes open cuts, shafts, and drifts exploring pyrrhotite-pyrite-chalcopyrite zones. In 1934 Hecla Mining shipped 364 tons of material from the Simpson Mine that averaged 0.72 oz Au/ton and 0.25 oz Ag/ton. Subsequent exploration work on the Glove 2 ground included geochemical, geophysical, and geological surveys in addition to diamond drilling predominantly within one of the three mineral zones known on the property; the Main Zone. Drilling results reportedly disclosed sub-surface gold values of up to "18 feet" of 0.30 oz Au/ton, 3.75 oz Ag/ton and 0.5% Cu.

The gold mineralization on the Glove 2 claim occurs within massive sulphide zones and skarn zones. Base metal mineralization occurs in volcanogenic sulphide zones. One such zone, intersected within a 1986 drill hole, reportedly returned a core assay of 4,953 ppm Zn and 110 ppb Au over undisclosed widths.

The results of the current exploration program have indicated that the mineralization in the heart of the Main Zone contains potentially economic gold resources. The Main Zone to the east and west has been locally exposed, which in the surface expression, is the apparent extension of the zone in these directions. However the current geological mapping and sampling has indicated that the eastern limits 70 metres to the east, could very well be the hanging wall portion of the Main Zone and the western limits of the Main Zone, 80 metres to the west could be the footwall of the Main Zone. Thus the Main Zone has not been clearly defined.

Laurence Sookochoff, PEng.

Sookochoff Consultants Inc.

INGENIUM CAPITAL CORP.

Geological Assessment Report on the Glover 2 Mineral Claim

January 20, 2005

PROPERTY DESCRIPTION, LOCATION & ACCESS

The property consists of one twenty unit grid claim covering an area of 500 hectares. Particulars are as follows:

<u>Claim Name</u>	<u>Tenure No.</u>	<u>Expiry Date</u>
Glove 2 (20 units)	407217	December 7, 2005

The property is located in the Greenwood Mining Division, within NTS 082E018&28, 20 km north of Grand Forks, British Columbia, Canada and five kilometres north of the Canada-United States border.

The claim is owned as to 100% by Ingenium Capital Corp.

Access is provided by a paved highway for 10 kilometres with the last two kilometres by an all-weather graveled road directly to the Glove 2 mineral claim.

CLIMATE

The region is situated within the dry belt of British Columbia with rainfall between 25 and 30 cm per year. Temperatures during the summer months could reach a high of 30° and average 25°C with the winter temperatures reaching a low of -15°C and averaging 8°C. On the property, the permanent snow on the ground would be from December to April and would not hamper a year-round exploration program.

The general climate of the area would allow a snow free surface exploration program of up to nine months of the year at the lower elevations.

PHYSIOGRAPHY AND VEGETATION

The property is located within the Christina Range of the Monashee Mountains that is characterized by moderate to steep forested slopes to elevations of 1,950 metres. Elevations on the property range between 1,200 and 600 metres.

INFRASTRUCTURE

Grand Forks and Greenwood, historic mining centres within 40 kilometres of the property, could be a source of experienced and reliable exploration and mining personnel and a supply for most mining related equipment. Castlegar, 175 kilometres east or Penticton, 140 kilometres north, are serviced daily by commercial airline. Vancouver, a port city on the southwest corner of, and the largest city in the Province of British Columbia is seven hours distant by road and less than one hour by air from Penticton or Castlegar.

INGENIUM CAPITAL CORP.
Geological Assessment Report on the Glover 2 Mineral Claim
January 20, 2005

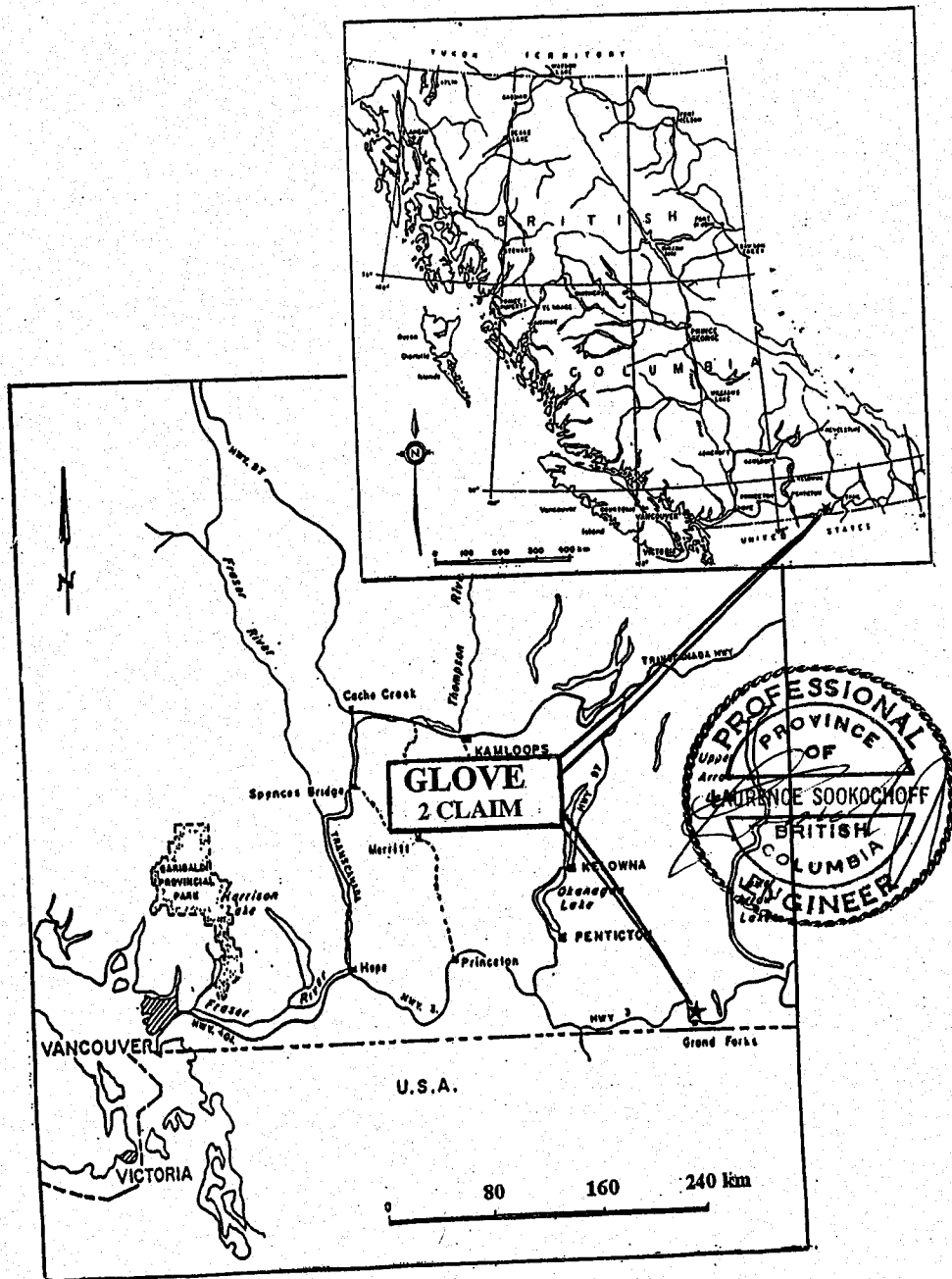


Figure 1. Location Map: Glove 2 Mineral Claim

INGENIUM CAPITAL CORP.

Geological Assessment Report on the Glover 2 Mineral Claim

January 20, 2005

WATER AND POWER

Sufficient water for all phases of the exploration program could be available from Pass Creek or Granby River, both adjacent to the property, or from many other variably sized water courses within the boundary of the property.

HISTORY

The Glove 2 claim covers ground that has been explored since 1901 and resulted in underground exploratory workings and the delineation of three mineralized zones over a strike length of 400 metres. The claim incorporates the former Simpson mine that includes open cuts, shafts, and drifts exploring pyrrhotite-pyrite-chalcopyrite zones. In 1934 Hecla Mining shipped 364 tons of material from the Simpson Mine that averaged 0.72 oz Au/ton and 0.25 oz Ag/ton. Subsequent exploration work on the Glove 2 ground included geochemical, geophysical, and geological surveys in addition to diamond drilling predominantly within one of the three mineral zones known on the property; the Main Zone. Drilling results reportedly disclosed sub-surface gold values of up to "18 feet" of 0.30 oz Au/ton, 3.75 oz Ag/ton and 0.5% Cu.

The gold mineralization on the Glove 2 claim occurs within massive sulfide zones and skarn zones. Base metal mineralization occurs in volcanogenic sulfide zones. One such zone, intersected within a 1986 drill hole, reportedly returned a core assay of 4,953 ppm Zn and 110 ppb Au over undisclosed widths.

Previous diamond drilling of the zones reportedly resulted in the intersection of gold bearing massive sulfides assaying up to 0.794 ounces of gold per ton over a 1.2 metre section and a skarn zone assaying 0.09 ounces of gold per ton over a 10.3 metre section. Subsequent exploration on the ground from 1995 to 1999 resulted in the surface delineation of a 121 metre mineral zone of undetermined width. A three-meter sample from the westernmost outcrop exposing the zone returned an assay of 0.238 oz/ton gold.

The current exploration results indicated that the widest zones of massive sulphides were at the intersections of east-west and northeasterly trending faults.

Since the acquisition of the property by Ingenium Capital Corp. in 2003, the company has caused the completion exploration programs which included geological mapping, sampling, and geophysical surveys.

INGENIUM CAPITAL CORP.
Geological Assessment Report on the Glover 2 Mineral Claim
January 20, 2005

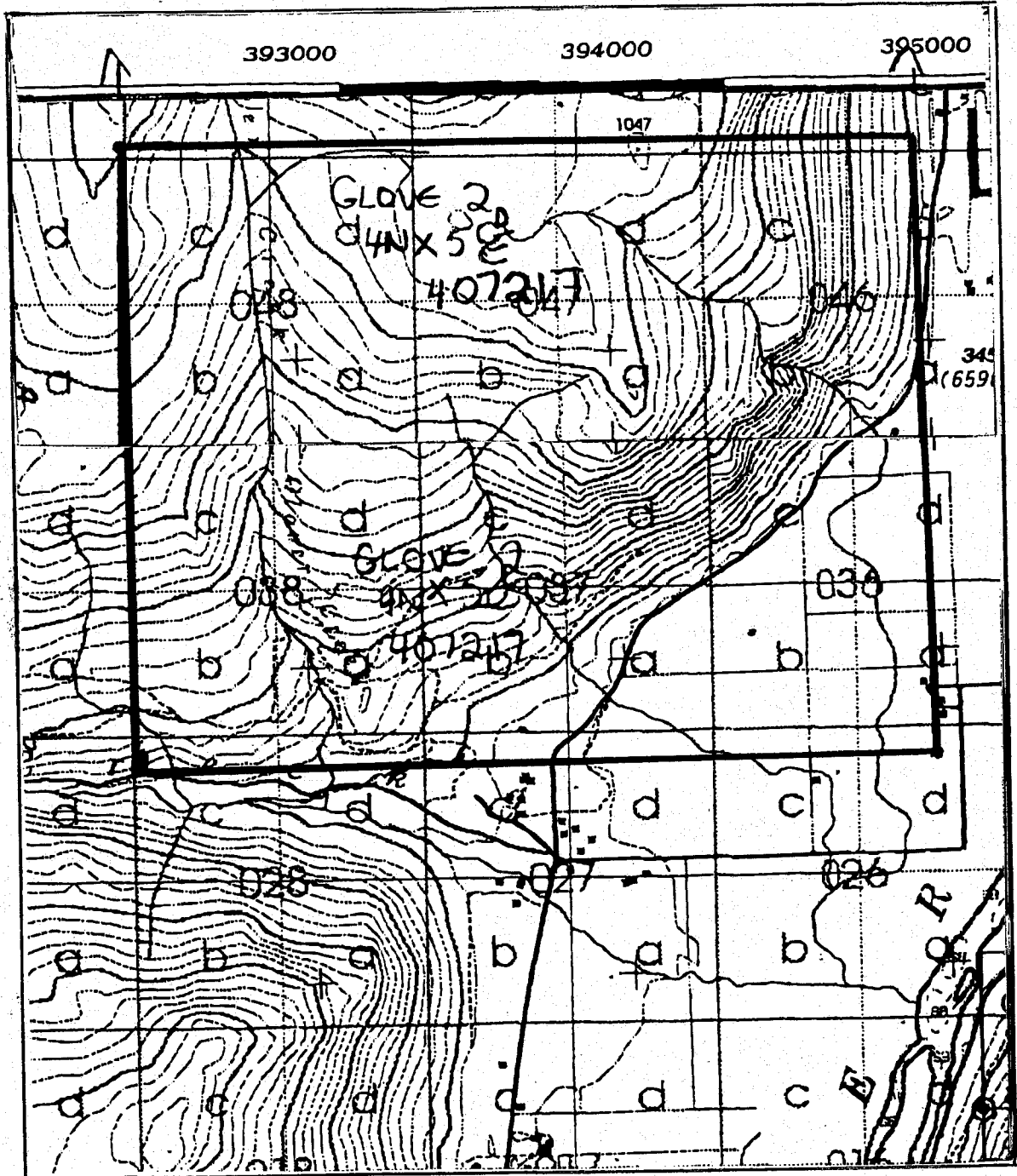


Figure 2. Claim Map: Glover 2 Mineral Claim (from BC Dep. of Mines Map 82E018, 028)

INGENIUM CAPITAL CORP.

Geological Assessment Report on the Glover 2 Mineral Claim

January 20, 2005

REGIONAL GEOLOGY

J. Paxton, P.Eng, describes the regional geology in a report on the former Glory claim which was located within four kilometres south-southwest of the Glover claims and adjacent to the east side of Granby River and the major Granby River Fault structure that defines the eastern border of the Republic Graben.

The geology is summarized as follows:

A major structure, The Granby River Fault, trends northerly through the property and separates the pre-Pennsylvanian Grand Forks Metamorphic Complex to the east from the Pennsylvanian to Tertiary rocks to the west. The Grand Forks Group is almost completely void of metallic mineral deposits. Pennsylvanian Permian rocks host a number of massive sulphide deposits plus numerous small shear zone polymetallic sulphide lenses

Where rocks have been intruded by later igneous plutons, precious metal quartz veins have developed as well as small skarn type deposits. Numerous small mines in the area such as the Dentonia, Lexington, Providence and Winnipeg are of this type.

The Triassic sequence of conglomerates and bedded limestone are host to the major ore deposits of the area. The chalcopyrite gold hematite ore deposits of the Phoenix, B.C., Motherlode, Sunset and Oro Denora all belong to this group.

Where rocks have been intruded by later igneous plutons, precious metal quartz veins have developed as well as small skarn type deposits. Numerous small mines in the area such as the Dentonia, Lexington, Providence and Winnipeg are of this type.

The Triassic sequence of conglomerates and bedded limestone are host to the major ore deposits of the area. The chalcopyrite gold hematite ore deposits of the Phoenix, B.C., Motherlode, Sunset and Oro Denora all belong to this group.

PROPERTY GEOLOGY

On the Glove claim ground, Gill (1988), reports on the geological exploration completed by Noranda, of the Hek claim group which is summarized by the writer as follows.

Unit I consists of rocks of the Paleozoic-Triassic volcano-sedimentary Knobhill assemblage and is comprised of four categories: fine-grained, siliceous meta-andesite and andesite conglomerates (unit Ia); hornfelsed siltstones, fine-grained to medium-grained quartzites and fine-grained quartz-feldspar-biotite gneisses (units I b, I c and I d).

INGENIUM CAPITAL CORP.

Geological Assessment Report on the Glover 2 Mineral Claim

January 20, 2005

PROPERTY GEOLOGY (CONT'D)

Unit 2 consists of various phases of the Jurassic Nelson intrusive whereas unit 3 and unit 4 comprise the comagmatic Coryell intrusive that underlies most of central portion of the Hek grid.

Units 6, 7 and 8 are a host of Tertiary dyke rocks and are the last intrusive phase represented in the grid area. These dykes intrude all rock types with the latite and trachyte dykes predominating. The orientation pattern of the dyke rocks is generally northeast-southwest and northwest-southeast.

ALTERATION

The predominant alteration, as indicated from the drill hole intersections, is of skarned andesites and hornfelsed sediments of the Knobhill group in association with semi-massive to massive zones of pyrite/pyrrhotite containing gold. In the andesites the skarn may be represented by variable degrees of siliceous, green, white andesite skarn associated with variable degrees of massive sulphides. The skarns may also exhibit moderate to intense biotite, varying degrees of calc-silicate and garnet alteration

MINERALIZATION

The mineralization is reported on in the writer's reports on the property for Ingenium Capital Corp. dated August 5, 2004. In addition to that information, in the May, 2004 Exploration Program the writer examined the showings on the property for additional information. A description of the showings examined is as follows:

Eastern Zone

Rare outcroppings on the Eastern zone indicate two east-west trending zones of massive sulphide mineralization. The northern zone is a 75 metre east-west trending zone of sporadic massive sulphides outcroppings within the sediments and the bordering syenite. The mineralization appears to be structurally controlled and possibly terminated to the east and the west by north to northeasterly trending faults. The southern zone, 20 metres south of the northern zone is a one-outcrop mineral zone with an east-west orientation. The south zone is completely within the meta volcanic/sediments and adjacent to the irregular contact between the syenite and meta volcanic/sediments.

INGENIUM CAPITAL CORP.

Geological Assessment Report on the Glover 2 Mineral Claim

January 20, 2005

MINERALIZATION (CONT'D)

The massive sulphide outcroppings exhibit narrow argillic alteration within the sediments and the volcanics and heavy to moderate limonitic alteration within the host rock. The limonitic alteration may be the result of northeasterly trending dioritic intrusions in the immediate area. The massive sulphide zone is indicated to be discontinuous to depth as three drill holes failed to intersect the zone at the vertical extensions.

Main Zone

The main zone displays an intermittently outcropping, 120 metre massive sulphide zone hosted by intensely altered volcanics/ sediments. The zone appears to have a width of up to three metres in the western portion, thinning eastward and comprised of, where observed in outcrop, a variable intimate mixture of massive sulphides and host rock. The interstitial host rock is fragmented and calved.

Alteration is of general variably intense pervasive limonite and sporadic adjacent argillic. There is no indication of massive sulphides, other than disseminations and pods of pyrite, in the host rock. Distant from the vein, the alteration in the volcanics is propylitic resulting in pervasive chloritization, occasional pyrite, a light degree of general carbonates as stringers or pervasive, and rare to occasional pyrite disseminations.

Glover Zone

This zone is not evident on surface. In the adit the zone is narrow and not well defined. Alteration is minimal. The drilling of the zone indicated the potential for increasing mineralization to depth in that a 6.2 metre interval assaying 0.259 oz Au/t was intersected in drill hole H 86-3.

INGENIUM CAPITAL CORP.

Geological Assessment Report on the Glover 2 Mineral Claim

January 20, 2005

OCTOBER 2004 EXPLORATION PROGRAM

From October 25, 2004 to October 26, 2004, an exploration program comprised of a general field examination of potential exploration sites including geological mapping and sampling was completed on the property. The focus of the exploration was on the Main zone, westward to the Glover zone covering a horizontal distance of 400 metres. On the Main zone, the individual outcrops were examined for evidence in establishing a general relationship on the genesis, and controls to the mineralization. The problem with the mineralization is that a semblance to its continuity is not apparent. Even with the drill-hole intersections that have been completed to determine the extension of the deposit, the mineral extent appears to be complex.

In order to help clarify the situation and provide additional information to attempt to resolve the situation, the main zone was examined for the various rock types, structures and mineralization. Although there may be ample information from prior exploration programs on the Main Zone, additional samples were taken of "other" rock types to determine the potential for gold-bearing sources other than the massive sulphides. The sample locations are indicated on Figure 4a. The samples taken; their description and assay results are indicated in the accompanying Sample Description Sheet included herein as Appendix B.

INGENIUM CAPITAL CORP.
Geological Assessment Report on the Glover 2 Mineral Claim
January 20, 2005

Sample: 6281

Location: Hanging wall of the Main Zone.

UTM E: 393340

UTM N: 5449765

Rock Type: Meta diorite.

Structure: Shear zones and fractures at 096° 45°N and at 008° 90°W

Alteration: Heavily silicified with heavy limonite on the weathered surface and locally.

Veining: 12 cm wide quartz and breccia zone.

Mineralization: Variable pyritic disseminations.

Assays: 17.6 ppb Au; 35.9 ppm Cu; 20.3 ppm As.

Remarks: Original general stockwork of quartz veins with secondary major east west shears.

INGENIUM CAPITAL CORP.
Geological Assessment Report on the Glover 2 Mineral Claim
January 20, 2005

Sample: 6282

Location: Main Zone

UTM E: 393328

UTM N: 5449750

Rock Type: Skarn.

Alteration: Heavy dark reddish-brown hematitic alteration is clearly evident which is the result of the surficial weathering of the inclusive massive sulphides and the disseminated sulphides in the host rock. The rock is heavily skarned as a result of the introduction of the massive sulphides and quartz. Additional overprinted skarnification occurred as a result of the subsequent peripheral introduction of stocks and dykes in the immediate area.

Structure: Shearing and fractures at Veining: Minimal quartz/quartz-carbonate along preferred structural direction. 270° 90° and at 310° 85°E

Mineralization: Massive sulphide as veining, pods, discontinuous zones and peripheral to breccia fragments.

Assays: 315.6 ppb Au; 31.2 ppm Cu; 580 ppm As

Remarks: Breccia zones with sub rounded fragments up to five centimetres in diameter at times in association with quartz.

INGENIUM CAPITAL CORP.
Geological Assessment Report on the Glover 2 Mineral Claim
January 20, 2005

Sample: 6283.

Location: Main Zone (mid eastern)

UTM E: 393370

UTM N: 5449748

Rock Type: Meta-diorite.

Structure: n/a.

Alteration: Hematitic.

Veining: n/a

Mineralization: Massive sulphides locally “plastered” on a breccia boulder sealed with temperature controlled scales. Disseminated pyrite in matrix.

Assays: 6706.5 ppb Au; 809.2 Cu; 66.5 As.

Sample: 6284.

UTM E: 393375

UTM N: 5449755

Description: Heavily silicified meta diorite.

Remarks: Boulder may be the roll front of a flow or viscous injection.

Other samples from this zone include:

Assays: 4892.7 ppb Au; 350.7 Cu; 11.7 As.

INGENIUM CAPITAL CORP.
Geological Assessment Report on the Glover 2 Mineral Claim
January 20, 2005

Sample: 6285.

UTM E: 393360

UTM N: 5449755

Description: Quartzite?

Assays: 7207.4 ppb Au; 3047.1 Cu; 13.2 As.

Sample 6286.

UTM E: 393345

UTM N: 5449737

Description: Quartz.

Assays: 8.6 ppb Au; 10.2 Cu; 1.5 As

INGENIUM CAPITAL CORP.

Geological Assessment Report on the Glover 2 Mineral Claim

January 20, 2005

Samples: 6287.

UTM E: 393350

UTM N: 5449775

Description: Quartzite?

Assays: 5.2 ppb Au; 38.7 Cu; 6.0 As

Description: Quartzite?

Assays: 6.0 ppb Au; 90.6 Cu; <.5 As

Remarks: If this is the central portion of the Main Zone, it appears to be thinning out. However, based on Main Zone projection eastward, the geology, quartz content, and mineralogy, this trenched area is indicated as the footwall of the Main Zone.

INGENIUM CAPITAL CORP.
Geological Assessment Report on the Glover 2 Mineral Claim
January 20, 2005

Samples: 6288.

UTM E: 393158

UTM N: 5449775

Description: Quartzite?

Assays: 6.0 ppb Au; 90.6 Cu; <.5 As

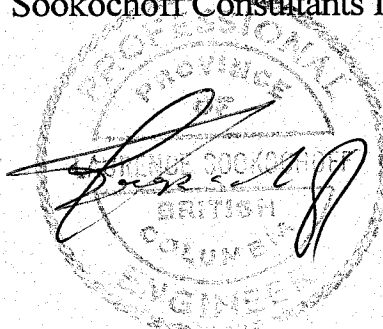
Remarks: If this is the central portion of the Main Zone, it appears to be thinning out. However, based on Main Zone projection eastward, the geology, quartz content, and mineralogy, this trenched area is indicated as the footwall of the Main Zone.

INGENIUM CAPITAL CORP.
Geological Assessment Report on the Glover 2 Mineral Claim
January 20, 2005

CONCLUSIONS

The results of the current exploration program have indicated that the mineralization in the heart of the Main Zone contains potentially economic gold resources. The Main Zone to the east and west has been locally exposed, which in the surface expression, is the apparent extension of the zone in these directions. However the current geological mapping and sampling has indicated that the eastern limits, 70 metres to the east, could very well be the hanging wall portion of the Main Zone and the western limits of the Main Zone, 80 metres to the west, could be the footwall of the Main Zone. Thus the Main Zone has not been clearly defined.

Respectfully submitted
Sookochoff Consultants Inc.



Laurence Sookochoff, P.Eng.

Vancouver, BC
January 20, 2005

INGENIUM CAPITAL CORP.
Geological Assessment Report on the Glover 2 Mineral Claim
January 20, 2005

Glove 2 Mineral Claim
Statement of Costs

The fieldwork on the Glove 2 mineral claim was carried out between October 25-26, 2004 to the value as follows:

L. Sookochoff, P.Eng.	
2.0 man days @ \$500.	\$ 1,000.00
Car rental:	
3 days @ \$45.00 plus gas & km	215.60
Room & board:	
2 man days @ \$100.00	200.00
Assays	161.50
Results & maps compilation	250.00
Report, xerox, & printing	<u>750.00</u>
	 \$ 2,577.10 <u><u> </u></u>

INGENIUM CAPITAL CORP.

*Geological Assessment Report on the Glover 2 Mineral Claim
January 20, 2005*

Selected References

- GILL, G. et al - 1988 Report on Field Activities on the Hek Claim Group. Noranda Exploration Company, Limited. May, 1988
- Assessment Report (Geological/Geochemical) on the Hek Claim Group. March 7, 1988. AR 17,375.
- KEW, J. - Statement of Work for Glover Mineral Claim Group. May 20, 1992. AR 22,349.
- Statement of Work for Glover Mineral Claim Group. June 30, 1995. AR 25,125.
- MEYER, W. - Diamond Drilling, Geological, Magnetometer and Soil Geochemical Report on the Hek Claim for Boundary Gold Ltd. 1975. AR 6,130.
- SOOKOCHOFF, L. - Geological Report on the Hek and Hel claims for Aries Resources Ltd., February 25, 1980.
- 1984 Assessment Report on the Hek Claim Group for Consolidated Boundary Explorations Ltd., January 25, 1985. Assessment Report 13,546.
 - 1986 Assessment Diamond Drilling Program on the Hek Claim Group for Consolidated Boundary Explorations Ltd. and Grand Forks Mines Ltd. January 26, 1987. AR 16,066.
 - Summary Report on the Glover Claim Group for Carnival Resources Ltd., May 14, 1997.
 - Geological Assessment Report on the Glover 13 Claim for Carnival Resources Ltd., July 14, 1998.
 - Geological & Geophysical Assessment Report on the Glover 11 Claim for Carnival Resources Ltd., April 30, 1999.
 - Geological & Geophysical Assessment Report on the Glover Claim Group for Carnival Resources Ltd., January 20, 2000.
 - Geochemical Assessment Report on the Glover Claim Group for Carnival Resources Ltd., January 20, 2001.
 - Geological Evaluation Report on the Glove 2 Mineral Claim for Ingenium Capital Corp, January 24, 2004

INGENIUM CAPITAL CORP.
Geological Assessment Report on the Glover 2 Mineral Claim
January 20, 2005

Certificate

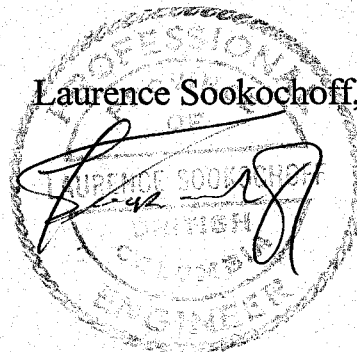
I, Laurence Sookochoff, of the City of Vancouver, in the Province of British Columbia, do hereby certify:

That I am a Consulting Geologist and principal of Sookochoff Consultants Inc. with offices at Suite 120 125A-1030 Homer Street, Vancouver, BC V6G 2M6.

I, Laurence Sookochoff, further certify that:

- 1) I am a graduate of the University of British Columbia (1966) and hold a B.Sc. degree in Geology.
- 2) I have been practicing my profession for the past thirty-seven years.
- 3) I am registered and in good standing with the Association of Professional Engineers and Geoscientists of British Columbia.
- 4) The information for this report is based on information as itemized in the Selected Reference section of this report, from the work as described within this report, and from work the writer has completed on the Glove claim ground since 1980.
- 5) I do not have any direct or indirect interest in the Glove 2 mineral claim nor in the securities of Ingenium Capital Corp.

Laurence Sookochoff, P. Eng.



Vancouver, BC
January 20, 2005

Laurence Sookochoff, P. Eng.

Sookochoff Consultants Inc.

INGENIUM CAPITAL CORP.

Geological Assessment Report on the Glover 2 Mineral Claim

January 20, 2005

APPENDIX A. ASSAY CERTIFICATE FOR SAMPLES TAKEN FROM THE GLOVE 2 MINERAL CLAIM BY LAURENCE SOOKOCHOFF, PENG.

ACME ANALYTICAL LABORATORIES LTD. 852 E. HASTINGS ST. VANCOUVER BC V6A 1R6 PHONE (604) 253-3158 FAX (604) 253-1716 (ISO 9002 Accredited Co.)		GEOCHEMICAL ANALYSIS CERTIFICATE																																			
AA		Sookchoff Consultants Inc. PROJECT Glover 2 File # A406637 20 1257 1050 Denman, Vancouver BC V6C 2N6 Submitted by: L. Sookchoff																												AA							
SAMPLE#	Mo ppm	Cu ppm	Pb ppm	Zn ppm	Ag ppm	Ni ppm	Co ppm	Mn ppm	Fe %	As ppm	U ppm	Au ppb	Th ppm	Sr ppm	Cd ppm	Sb ppm	Bi ppm	V ppm	Ca %	P %	La ppm	Cr ppm	Mg %	Ba ppm	Ti %	B ppm	Al %	Na %	K %	W ppm	Hg ppm	Sc ppm	Tl ppm	S %	Ga ppm	Se ppm	
SI	.1	1.5	.3	1	<.1	.4	.1	6	.13	<.5	<.1	2.0	<.1	6	<.1	<.1	<.1	1	.24	.001	<.1	<.1	<.01	6	.001	1	.01	1.059	.01	<.1	.01	.1	<.1	.08	<.1	<.5	
06281	.6	35.9	4.3	24	.1	7.4	10.6	256	2.33	20.3	.5	17.6	1.0	29	.1	.2	.2	72	1.86	1.09	4	8.1	.22	35	.141	1	.70	.064	.06	.1	<.01	2.6	<.1	.81	4	<.5	
06282	.7	31.2	7.4	118	.8	5.2	9.4	999	5.17	580.0	.4	315.6	.5	110	.2	.4	.7	253	2.12	1.35	4	11.4	3.53	69	.367	1	4.97	.471	2.22	.2	<.01	12.3	.8	1.42	15	<.5	
06283	3.3	809.2	29.0	36	22.9	32.0	118.5	352	36.34	65.5	.3	6706.5	.5	2	1.2	2.6	10.9	36	.06	.024	1	2.8	.34	6	.009	<.1	.48	.005	.07	.1	<.01	2.6	.4	>10	3	6.0	
06284	2.7	350.7	46.2	71	20.6	4.3	2.4	538	3.90	11.7	2.6	4892.7	4.3	3	.9	4	7.7	40	.11	.057	8	7.0	.80	36	.015	1	1.30	.016	.46	.1	.01	4.3	.3	3.34	7	.8	
06285	3.7	3047.1	32.0	273	25.7	12.7	3.4	678	17.89	13.2	1.7	7207.4	2.9	3	5.0	4	6.0	33	.11	.063	3	6.4	.58	21	.010	<.1	1.16	.012	.30	.1	<.01	5.1	.2	>10	5	2.0	
06286	.9	10.2	3.4	7	.1	1.9	.9	91	.65	1.5	3.3	8.6	15.8	11	.1	.1	<.1	4	.12	.007	13	1.7	.08	29	.012	1	.32	.045	.11	.1	<.01	1.7	<.1	.12	1	<.5	
06287	2.0	38.7	3.2	25	.3	8.5	17.6	161	3.37	6.0	.7	5.2	1.2	26	.1	.2	.2	59	.65	.121	5	17.1	.39	28	.144	1	.67	.078	.04	.2	<.01	2.4	<.1	1.53	3	<.5	
06288	19.1	90.6	2.8	18	.2	54.9	12.5	119	2.91	<.5	2.3	6.0	12.8	18	.1	.1	.3	47	.65	.106	17	9.8	.13	30	.102	1	.51	.069	.06	.3	<.01	1.2	<.1	1.50	2	7.5	
STANDARD DS5	12.8	143.2	24.9	139	.3	25.3	12.0	793	.3	02	18.5	6.1	44.0	2.9	48	5.6	3.9	6.0	.62	.77	.096	13	188.0	.68	141	.101	17	2.11	.035	.14	5.0	.16	3.4	1.1	<.05	6	5.1

GROUP 1DX - 15.00 GM. SAMPLE LEACHED WITH 90 ML 2-2-2 HCL-HNO3-H2O AT 95 DEG. C FOR ONE HOUR, DILUTED TO 300 ML, ANALYSED BY ICP-MS.
(>) CONCENTRATION EXCEEDS UPPER LIMITS. SOME MINERALS MAY BE PARTIALLY ATTACKED. REFRACTORY AND GRAPHITIC SAMPLES CAN LIMIT AU SOLUBILITY.
- SAMPLE TYPE: ROCK R150 60C

Data 1 FA _____ DATE RECEIVED: OCT 26 2004 DATE REPORT MAILED: Nov 12/04...

All results are considered the confidential property of the client. Acme assumes the liabilities for actual cost of the analysis only.

INGENIUM CAPITAL CORP.

*Geological Assessment Report on the Glover 2 Mineral Claim
January 20, 2005*

APPENDIX B. SAMPLE RECORD SHEET

Acme File # A406637
Ref. Figure 4

Sample	Location		Sample Type	Lithology	Description	Mineralization	Au ppb Cu ppm As ppm		
	UTM E	UTM N					Au ppb	Cu ppm	As ppm
6281	393340	5449765	selected grab	meta diorite	Heavily silicified pseudo breccia	heavy limonite	17.6	35.9	20.3
6282	393328	5449750	selected grab	skarn	biotite; silic'd; adjacent to qtz vein	mod diss pyrite	315.6	31.2	580
6283	393370	5449748	selected grab	meta diorite	Heavily silicified	massive sulphides (ms)	6706.5	809.2	65.5
6284	393375	5449755	selected grab	meta diorite	rounded boulder; scaled on surface	ms on surface & diss py	4892.7	350.7	11.7
6285	393360	5449755	selected grab	quartzite?	boulder; hvy limonite on surface	mod diss sulphides	7207.4	3047.1	13.2
6286	393245	5449737	selected grabs	quartz	white; massive	non detected	8.6	10.2	1.5
6287	393250	5449735	random grabs	quartzite?	hosted by alaskite	non detected	5.2	38.7	6
6288	393158	5449775	float	quartzite?	grayish-brown w/ hvy lim alt'n on surface	non detected	6	90.6	<.5

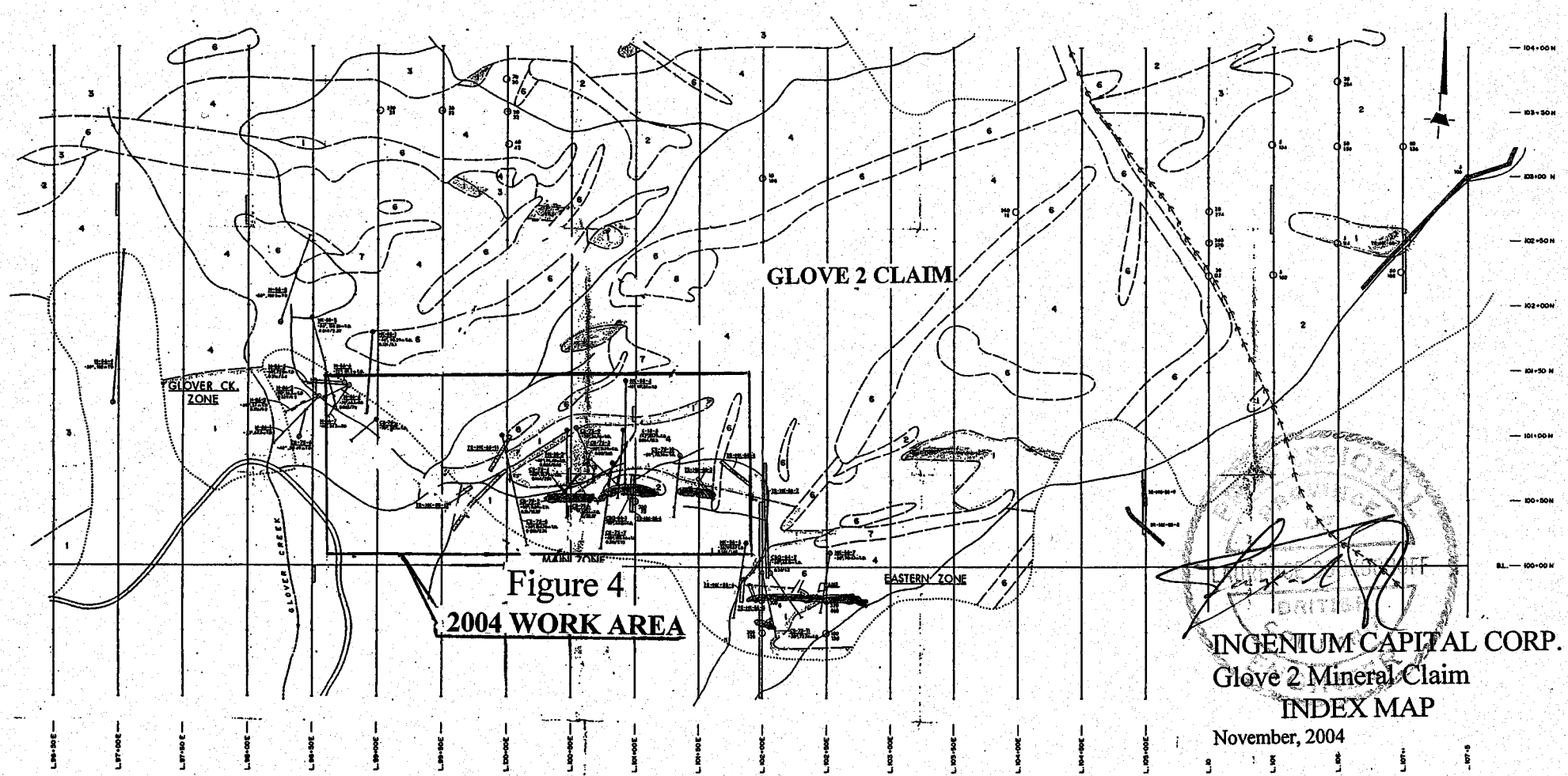


Figure 4
2004 WORK AREA

INGENIUM CAPITAL CORP.
Glove 2 Mineral Claim
INDEX MAP

November, 2004

FIGURE 3

LEGEND

DYKE SWARM (TERTIARY)

- 8 MONZONITE
- 7 FELDSPAR PORPHYRY
- 6 MICRO SYENITE, MONZONITE, DIORITE

SULFIDE ZONE

- 5 MASSIVE Pb/Zn , Ag , EPIDOTE, CHALCITE + BIOTITE ALTERATION
- CORVILL INTRUSIVES (TERTIARY)
- 4 SYENITE
- 3 MONZONITE

NELSON INTRUSIVES (JURASSIC)

- 2 GRANODIORITE
- KNOBHILL/BROOKLYN (PALEOZOIC/TRIASSIC)
- 1 META VOLCANICS + SEDIMENTS

SYMBOLS

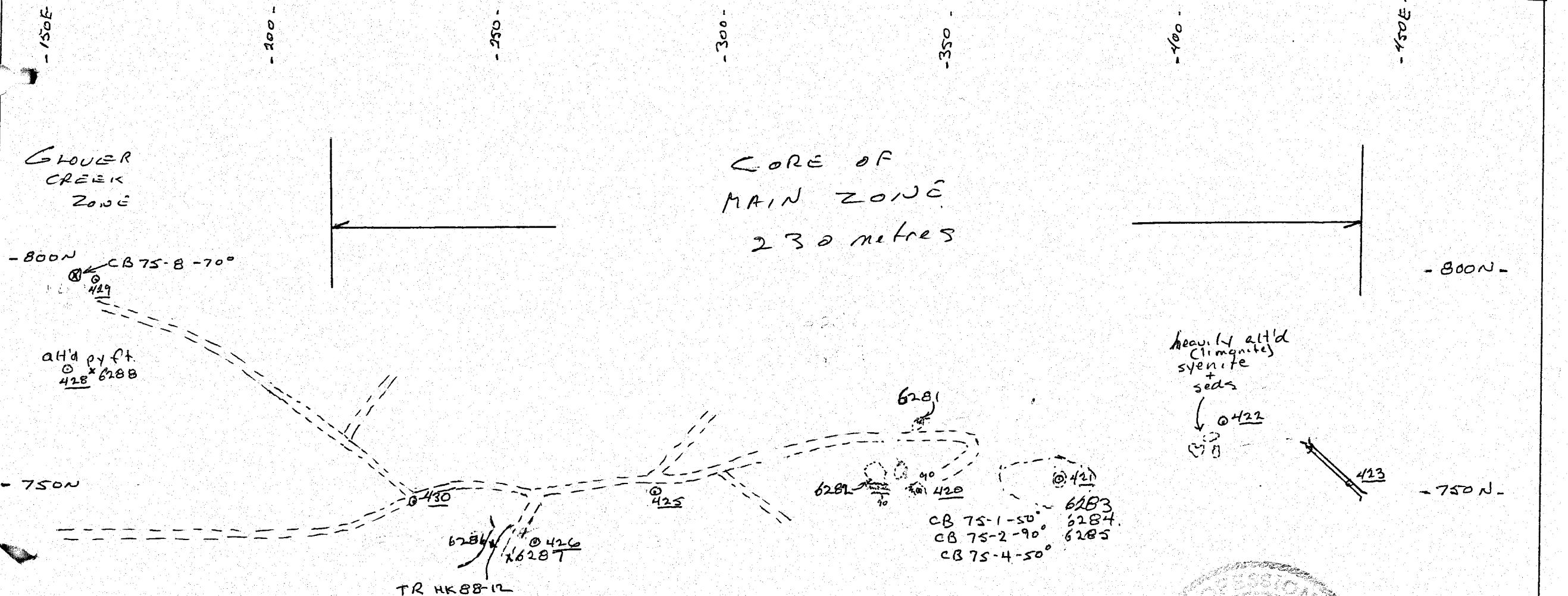
- GEOLOGICAL CONTACT
- ROADS
- SURVEYED DDH WITH HORIZONTAL PROJECTION OF MINERALIZED ZONE (Dip, Total Depth, opt Au/metres)
- UNSURVEYED DDH WITH HORIZONTAL PROJECTION OF MINERALIZED ZONE (Dip, Total Depth, opt Au/metres)
- LE ZONE OR ANOMALY OF INTEREST

- SURVEYED TRENCH
- UNSURVEYED TRENCH
- UNSURVEYED DDH WITH HORIZONTAL PROJECTION OF MINERALIZED ZONE (Dip, Total Depth, opt Au/metres). POSITION LOCATED BY GRID COORDINATES ONLY
- SOIL SAMPLE Au (ppb) Cu (ppm)

Base Map: Noranda, 1989

METRES 0 10 20 30 40 50 60

REVISED	HEK PROPERTY	
	COMPILATION	
DATE: 11/15/04	DRAWN BY: J.E.L.	CHECKED BY: J.E.L.
SCALE: 1:50,000	PROJECT NO.: 040004	MAP NO.: 2B
NORANDA EXPLORATION		
OFFICE: VANCOUVER		



LEGEND.

- x 6288 - Rock Sample N°
- o 428 - GPS STATION
- x - DRILL HOLE + H-86-3 NUMBER

- - FRACTURE
- || - TRENCH
- - ROAD
- o - OUTCROP
- o - SCATTERED OUTCROP LIMIT.



FIGURE 4.

INGENIA CAPITAL CORP.
Glover Mineral Claim Greenwood M.D.

MAIN ZONE
SAMPLE LOCATIONS

Scale: 1:1000