

Report on Exploration of Waterhen Claims
Port Alberni Area of
British Columbia

RECEIVED
MAR 29 2005
Gold Commissioner's Office
VANCOUVER, B.C.

Claims: Waterhen 1 – Tenure #399107
Waterhen 2 – Tenure #399108

Total Claim Units: 36

Location: Victoria Mining Division

Owner: Barry Hanslit

Operator: Barry Hanslit

Report By: Barry Hanslit

Date Submitted: 29th of March 2005

GEOLOGICAL SURVEY BRANCH
VICTORIA, B.C.

27,691

RECEIVED
OCT 24 2005
Gold Commissioner's Office
VANCOUVER, B.C.

Table of Contents

	Page
Introduction	3
Location and Access	3
Property History	3
Exploration Activity	4
Future Exploration on Property	4
Statement of Qualifications	5
Itemised Cost Statement	6
Map 1 – Tenure Map	7
Map 2 – Area of Exploration	8
Map 3 - GPS Waypoints	9

1. Introduction

On December 30th of 2003 Waterhen 1 and Waterhen 2 Claims were grouped and will now be known as the Waterhen Group.

Exploration on the Waterhen group of claims in 2004 consisted of some geophysics in hopes of finding a continuation of some known mineralized veins on the property. This was done in hopes of finding new diamond drill targets for the 2005 field season.

2. Location and Access

The Waterhen claims are located approximately 21 kilometers southeast of Port Alberni on Vancouver Island. Access to the claims from the north is to follow logging roads to the head of China Ck and then switchback trails up Mt. McQuillan to Summit lake. From the south logging roads lead to the head of Rift Creek and from there heading north on the ridge leading to Summit Lake. Both routes involve a minimum 2 hour hike to reach the showings near Summit Lake.

3. Property History

The China Creek area has a long established history of both lode and placer mining and exploration. Records show that placer mining was carried out in the China Ck watershed as early as 1862.

Lode mining/exploration started in the China Ck valley around 1890 and continues to present day.

The property has been held by various individuals and companies since the late 1800's and during the 1980's saw a drill program conducted on the the "high grade vein" near Summit Lake.

5. Exploration Activity

Exploration consisted of conducting geophysics on the property. Area of interest was the vein known as the "High Grade" vein. This vein was discovered in the late 1800's and has subsequently been heavily explored. The vein has been traced on the surface for about 160 m and varies in width from 1m to .1m. The purpose of the geophysics was to attempt to trace the vein where it dips under overburden. The vein is covered by overburden in 2 locations for distances of 10 to 45m. Attached is a specifications sheet for the Minelab instrument.

A Minelab GP which measures conductivity and resistance was used to locate the vein under overburden to depths of .5 to 2m. On Map 3 GPS location 3 and 4 show the location of where it has been assumed the "High grade" vein dips below overburden. With the Minelab we were able to get a strong response in both areas and hand trenching exposed the vein. At location 3 the vein was exposed after hand trenching to a depth of 1.2 meters through loose rubble and compacted soil. The vein was .7m in diameter. At location 4 the vein was exposed at a depth of .7m and was .5m in diameter. Vein material resembled the "High grade" vein to the North and South. At each of the two locations the response from the Minelab was marked on the surface and for distances of 10m at location 3 and 45 meters for location 4. A total of 40 meters of hand trenching and exposing of the vein was completed.

The purpose of the survey was to confirm the length of the vein and show that it maintains characteristics such as width throughout its strike length. The purpose of the trenching is to delineate potential diamond drill targets to test the vein at depth.

6. Future Exploration on Property

A joint venture agreement has been established for the 2005 field season. Drill hole locations which were laid out in 2003 will be drilled in the late summer of 2005. A total of 2 BQ holes totalling 400m will be drilled to test the high grade vein.

6. Statement of Qualifications

I Barry Hanslit of 3380 Hammond Bay Rd. Nanaimo, B.C. do hereby declare the following.

1. I have completed a "Prospecting Course" in 1991 given by a representative of Manitoba Natural Resources at Falcon Lake, Manitoba.
2. I have been prospecting for the past 12 years in both Manitoba and more recently British Columbia
3. Have worked on several prospects and developed prospects in Manitoba during the years 1990 to 1994
4. Currently in a joint venture with Navigator Exploration(NVR) of Vancouver, British Columbia

7. Itemised Cost Statement

**Wages Barry Hanslit (15 days @ \$300/Day Including ATV, Vehicle
And Minelab GP)**

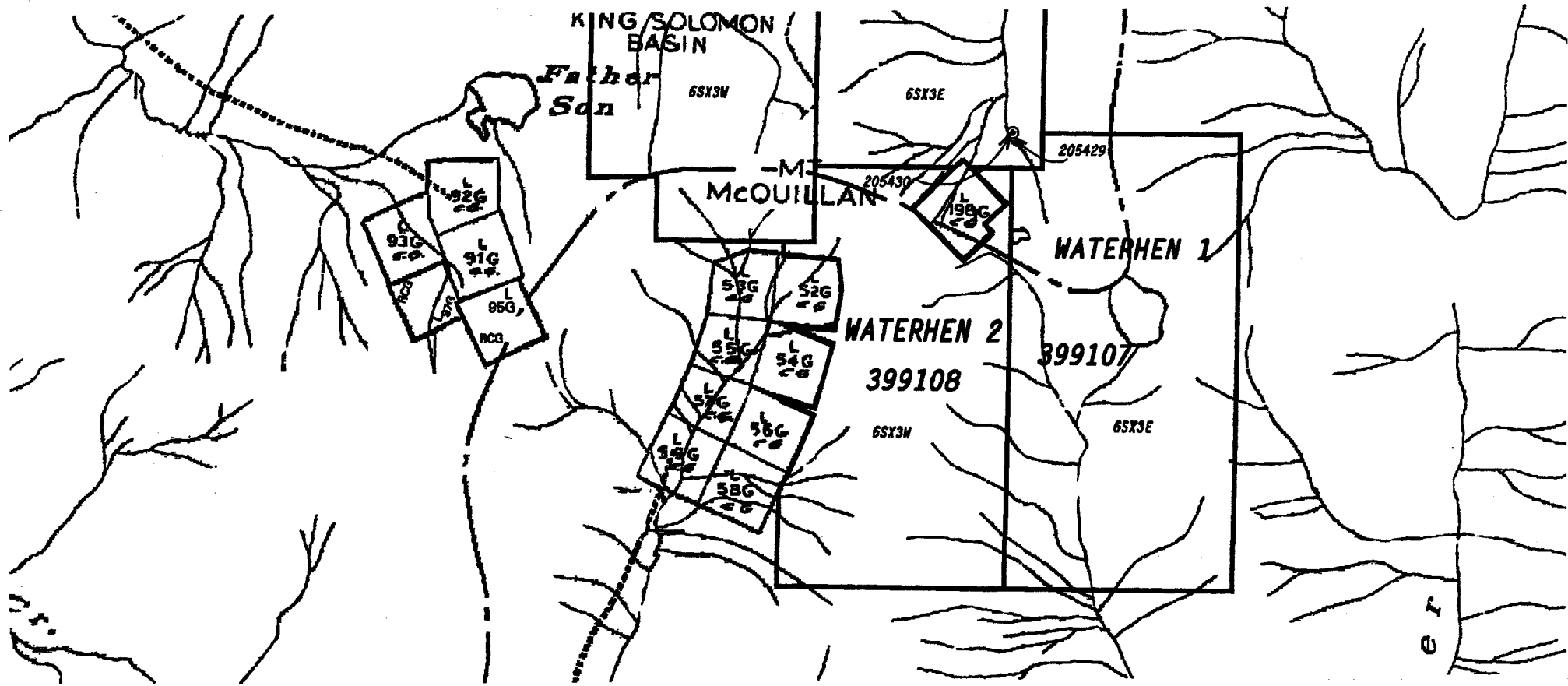
\$4500.00

Total:

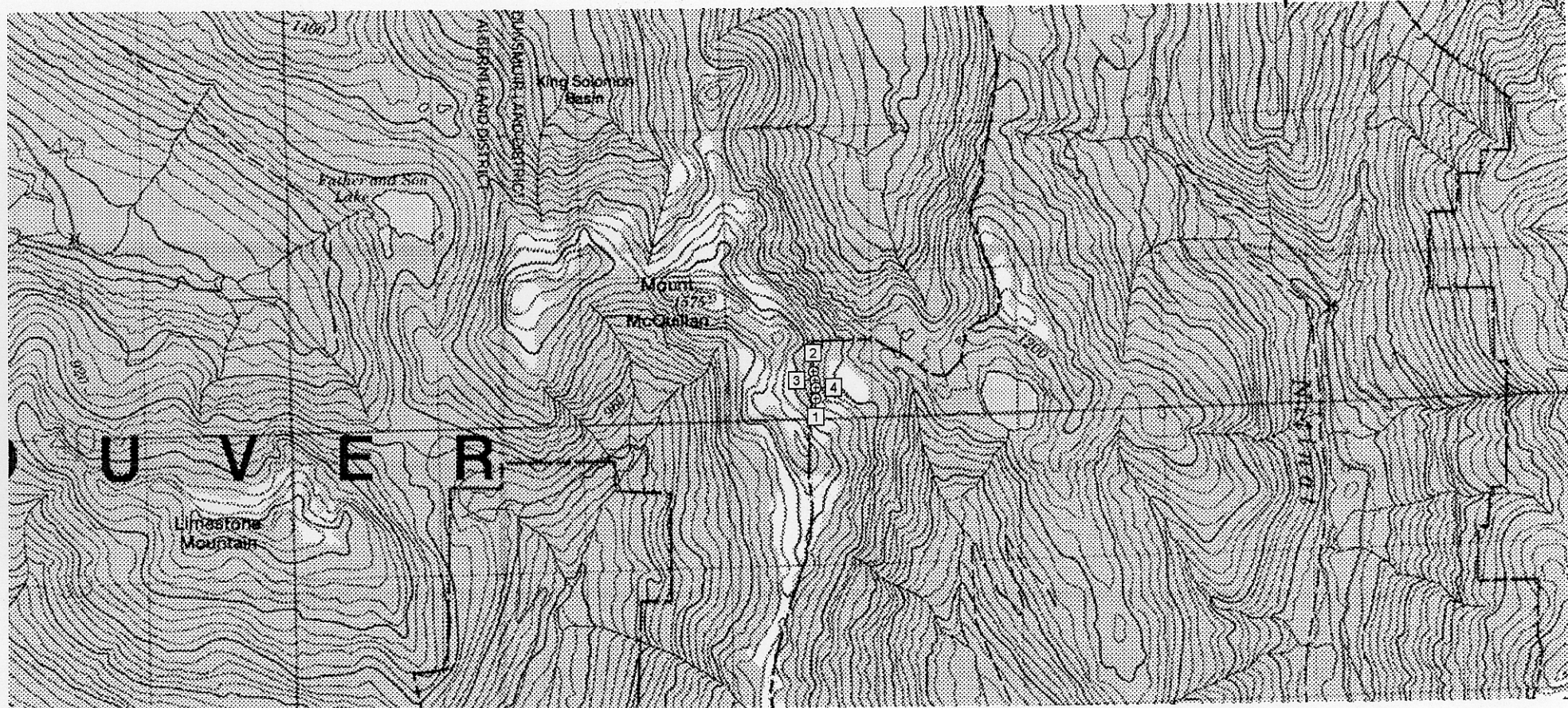
\$4500.00

Map 1

092F02E



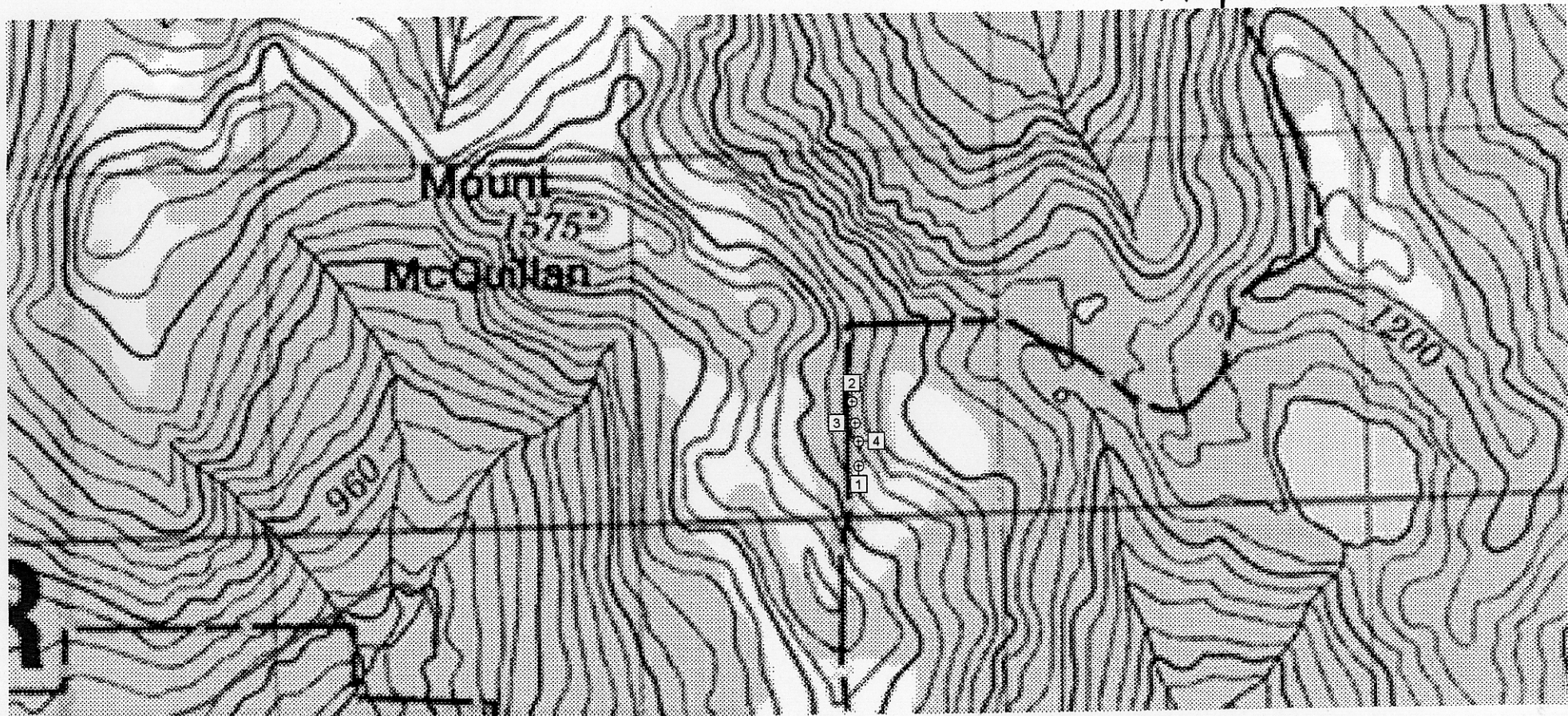
Map 2



Overview of area of exploration

1000m





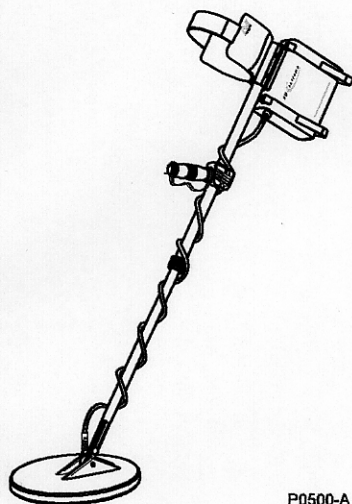
GPS Loc.

UTM

GPS Loc.	UTM	Description
1	10U 383612 5440134.7	South end of "High Grade" vein
2	10U 383598 5440313	North end of "High Grade" vein
3	10U 383605 5440253	Location of hand trench
4	10U 383613 5440202	Location of hand trench

1000m

TECHNICAL SPECIFICATIONS



P0500-A

The 'GP extreme'

Table 7.1 Technical specifications

Length	Maximum	1300mm
	Minimum	1100mm
Weight	Complete with 11" coil (excluding battery)	2400g
Configuration	Shaftmount	
Transmit Freq.	Bi-level Pulse Induction	
Technology	Dual Voltage Technology (DVT)	
Ground Rejection	Automatic ground balance	
Search Mode	Motion detector	
Controls	Power (On/Off)	2 pos. switch
	Boost (Shallow/N/Deep)	3 pos. switch
	Threshold	1 turn control
	Volume	1 turn control
	Signal	1 turn control
	Tone	1 turn control
	Tune	push switch
	Level Adjust	1 turn control
	Iron Discriminate (All Metal/Disc)	2 pos. switch
	Soil (Sensitive/N/Salt)	3 pos. switch
	Rx (Normal/E/Cancel)	3 pos. switch
	Balance (Fixed/Tracking)	2 pos. switch
Audio Output	6.35mm (1/4") headphone socket	
	Audiotex headphones	600 ohm
Coil (standard)	Extreme 1100 (Double D)	
	Extreme 1800 (Double D)	
Battery	6VDC 10A/hr sealed lead acid	10-12hrs

Patents Apply

Note: In the interest of product improvement, Minelab reserves the right to make changes without notice.