

DIAMOND DRILLING ASSESSMENT REPORT

ON THE

**KUTCHO CREEK PROJECT,
NORTH CENTRAL BRITISH COLUMBIA**

VOLUME II - SECTIONS

**LIARD MINING DISTRICT
104I018, 019, 028, 029
58°12'N : 128°22'W**

**Jeff#4 (227719), Jeff#6 (227721), Jeff#92 (227802), Jeff#94 (227804)
KC32 (227910), SMRB#13 to #16 (227648 to 227651)**

**WESTERN KELTIC MINES INC.
OWNER AND OPERATOR**

Prepared by:

Peter M. Holbek, M.Sc. P.Geo.
VP Exploration Western Keltic Mines Inc.

and

Rob G. Wilson, P.Geo.
Exploration Manager Western Keltic Mines Inc.

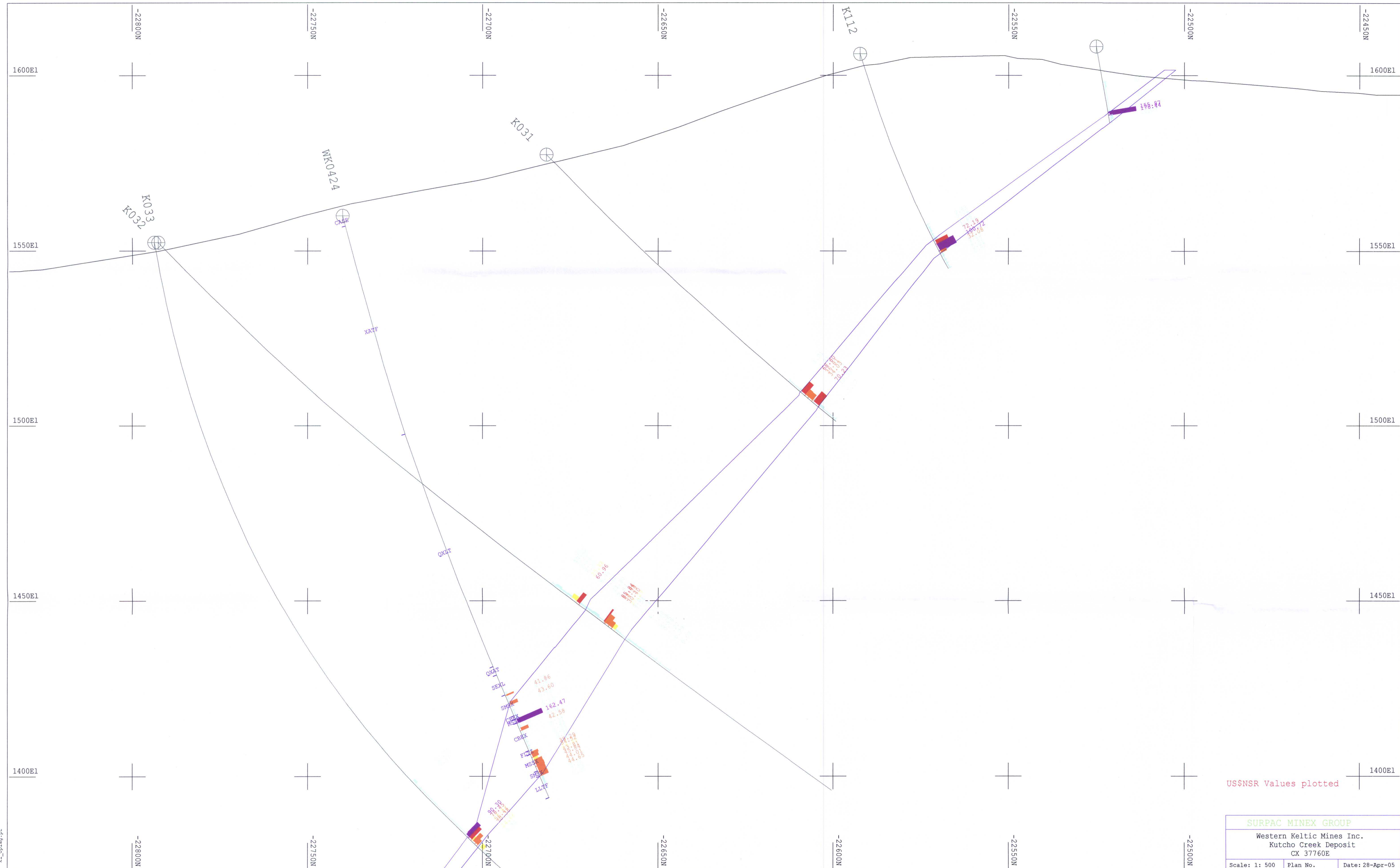
RECEIVED
AFF 2 8 2005
Gold Commissioner's Office
VANCOUVER B.C.

**GEOLOGICAL SURVEY BRANCH
ASSESSMENT REPORT**

2 of 2

APRIL 26, 2005

27,743

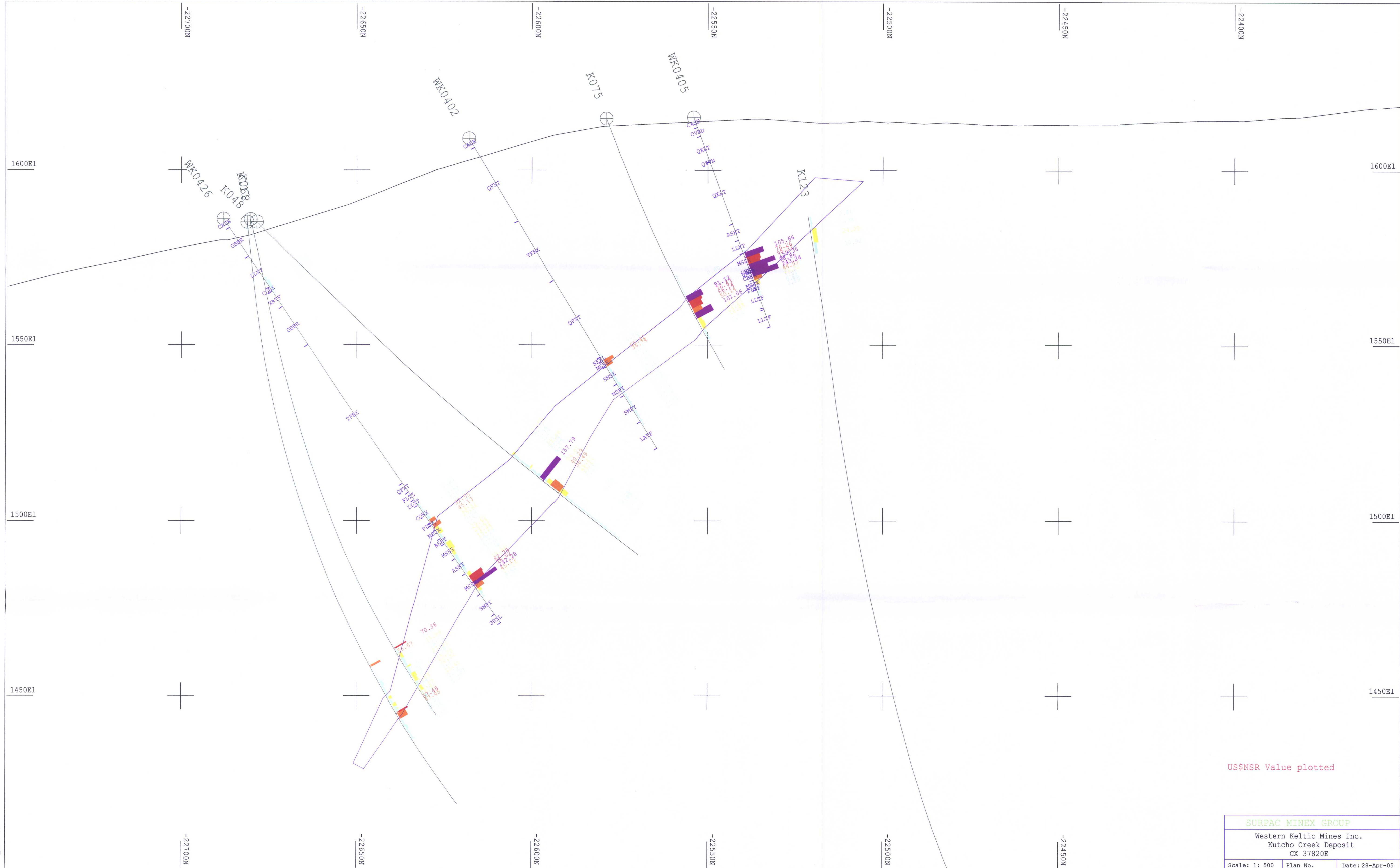


US\$NSR Values plotted

SURPAC MINEX GROUP		
Western Keltic Mines Inc.		
Kutcho Creek Deposit		
CX 37760E		
Scale: 1: 500	Plan No.	Date: 28-Apr-05

GEOLOGICAL SURVEY BRANCH
ASSESSMENT REPORT

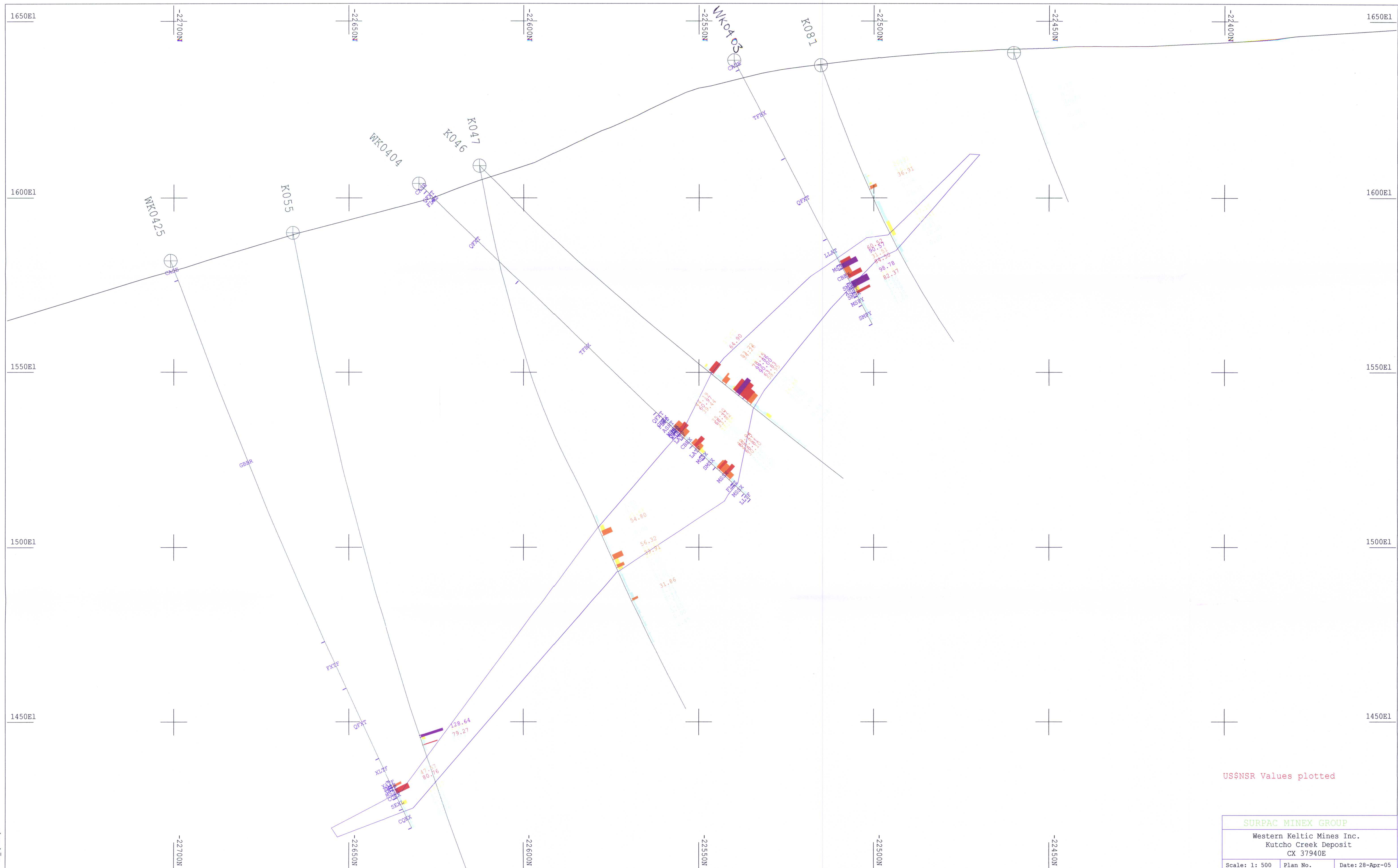
27.743



SURPAC MINEX GROUP		
Western Keltic Mines Inc. Kutcho Creek Deposit CX 37820E		
Scale: 1: 500	Plan No.	Date: 28-Apr-05

GEOLOGICAL SURVEY BRANCH
ASSESSMENT REPORT

27,743

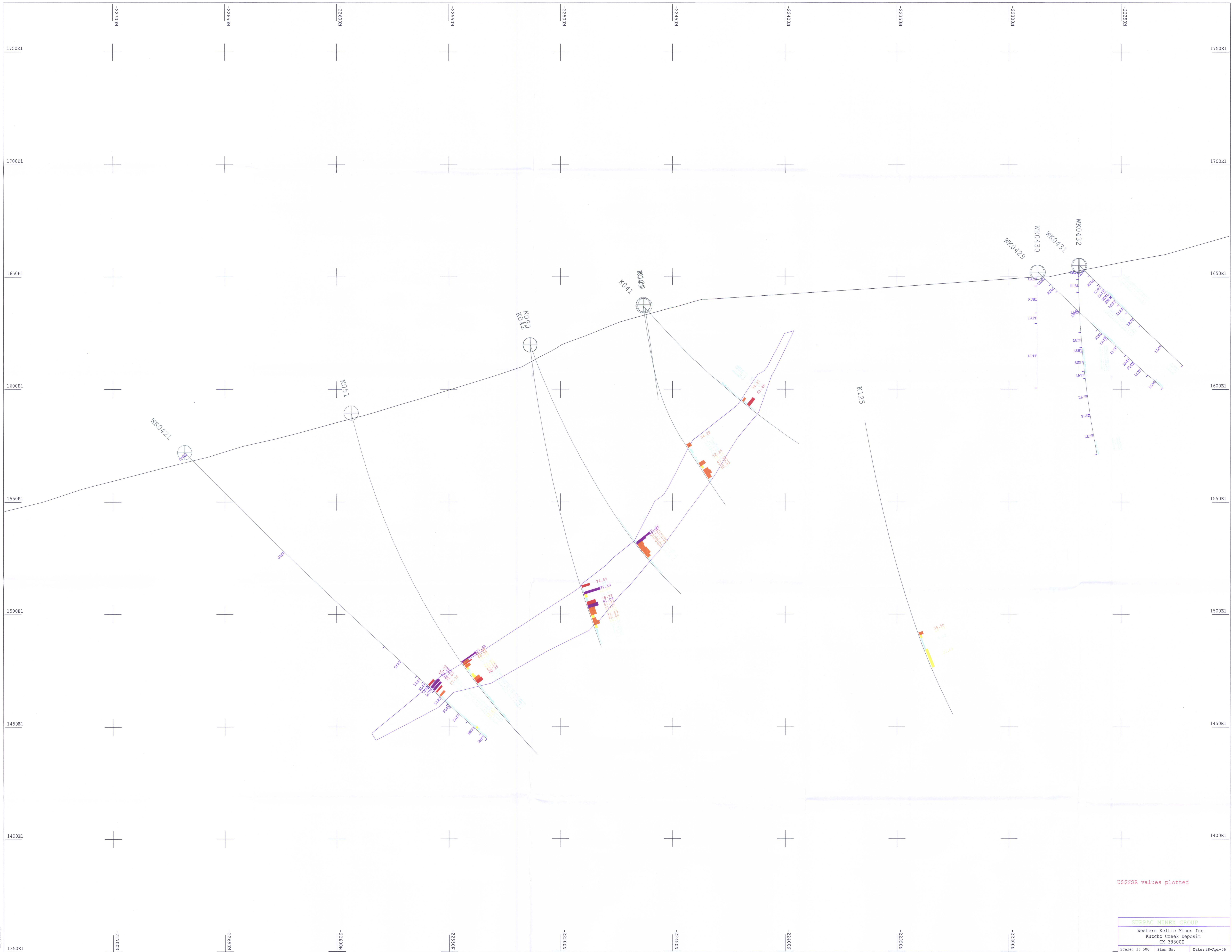


US\$NSR Values plotted

SURPAC MINEX GROUP		
Western Keltic Mines Inc.		
Kutcho Creek Deposit		
CX 37940E		
Scale: 1: 500	Plan No.	Date: 28-Apr-05

GEOLOGICAL SURVEY BRANCH
ASSESSMENT REPORT

27,743

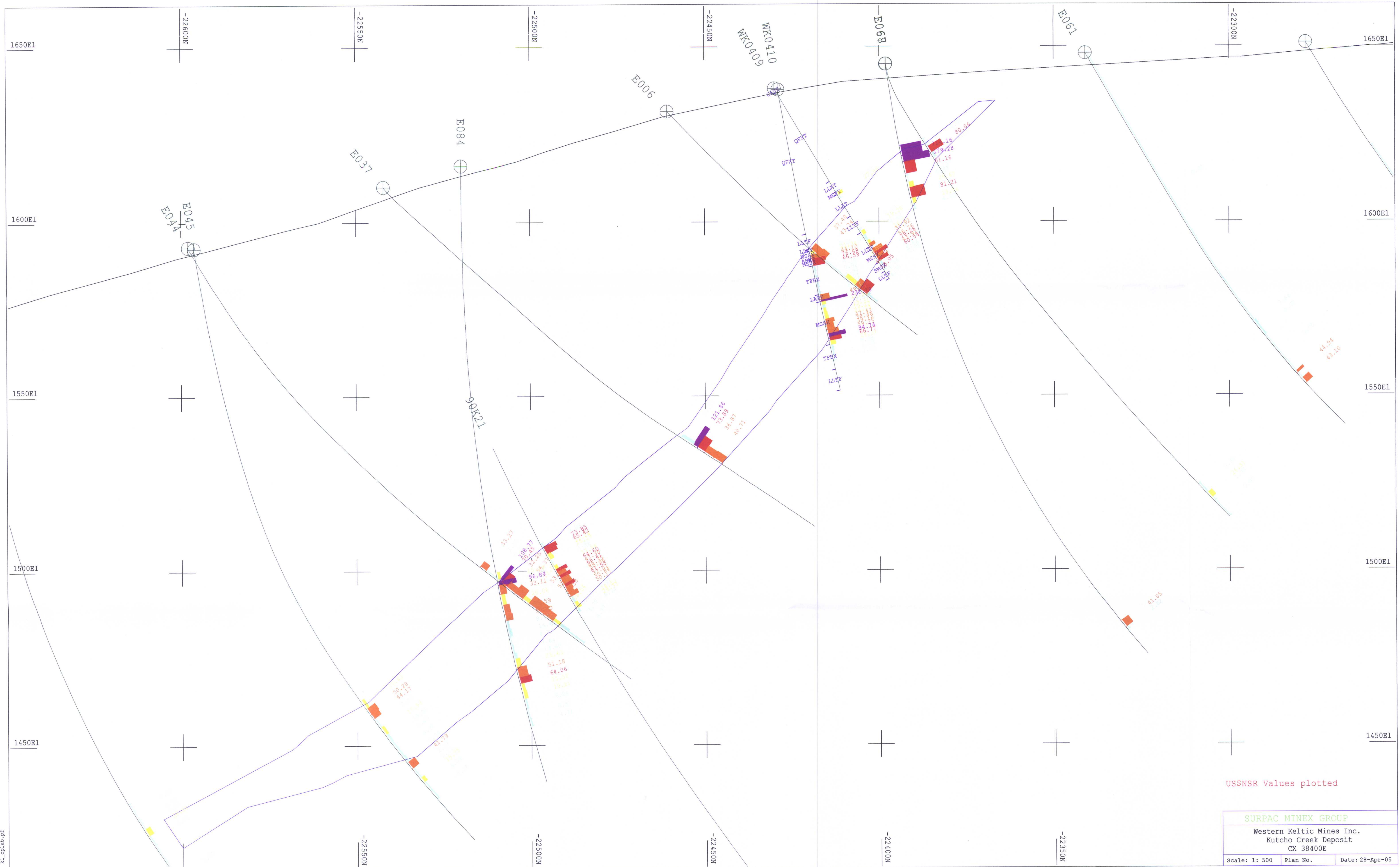


USSNSR values plotted

SURFAC MINEX GROUP		
Western Celtic Mines Inc.		
Kutocho Creek Deposit		
C1 383008		
Scale: 1: 500	Plan No.	Date: 28-Apr-05

GEOLOGICAL SURVEY BRANCH
ASSESSMENT REPORT

27.743



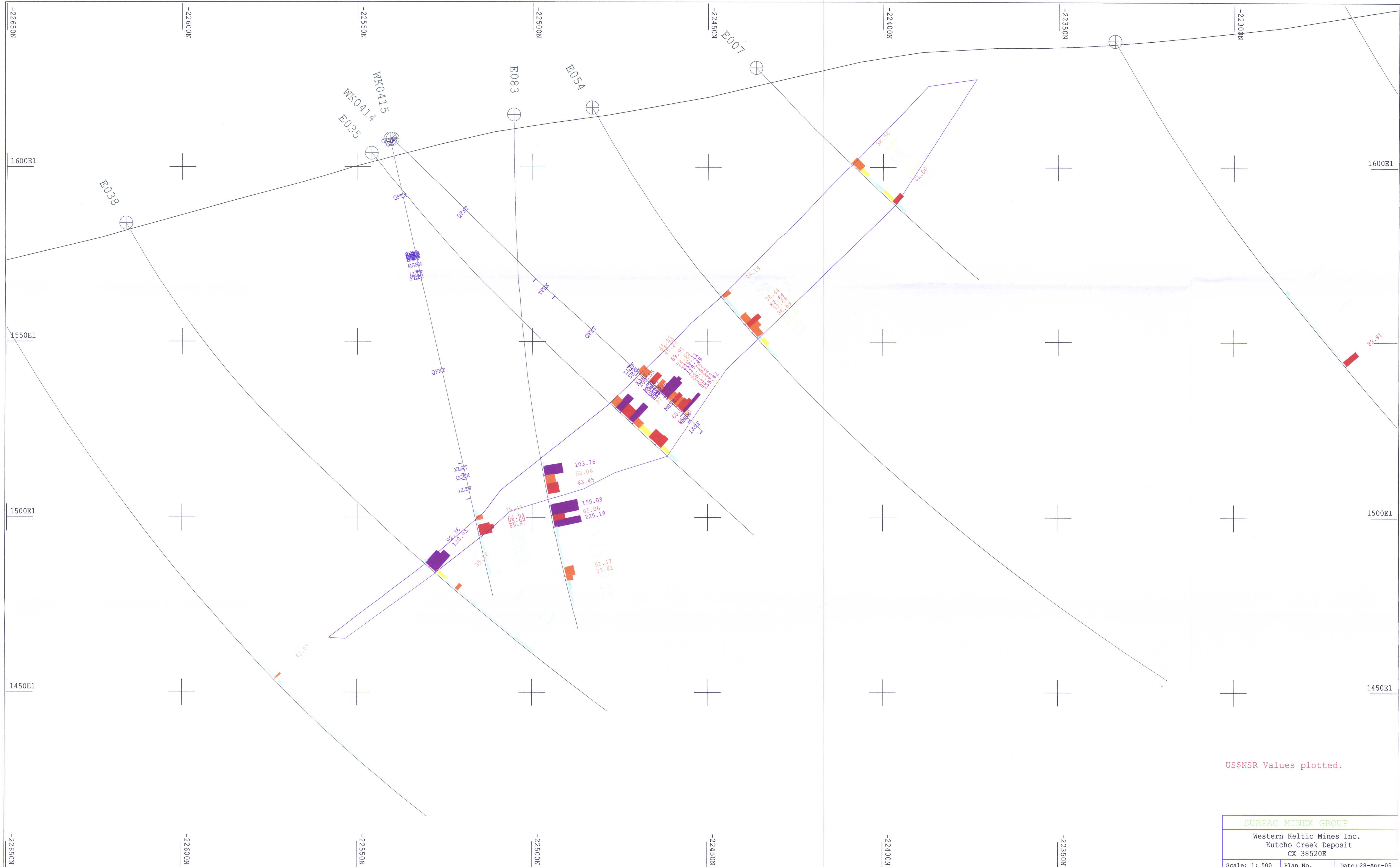
US\$NSR Values plotted

SURPAC MINEX GROUP		
Western Keltic Mines Inc. Kutcho Creek Deposit CX 38400E		
Scale: 1: 500	Plan No.	Date: 28-Apr-05

GEOLOGICAL SURVEY BRANCH
ASSESSMENT REPORT

27.743

K SURPAC_VISION - Surpac Minex Group

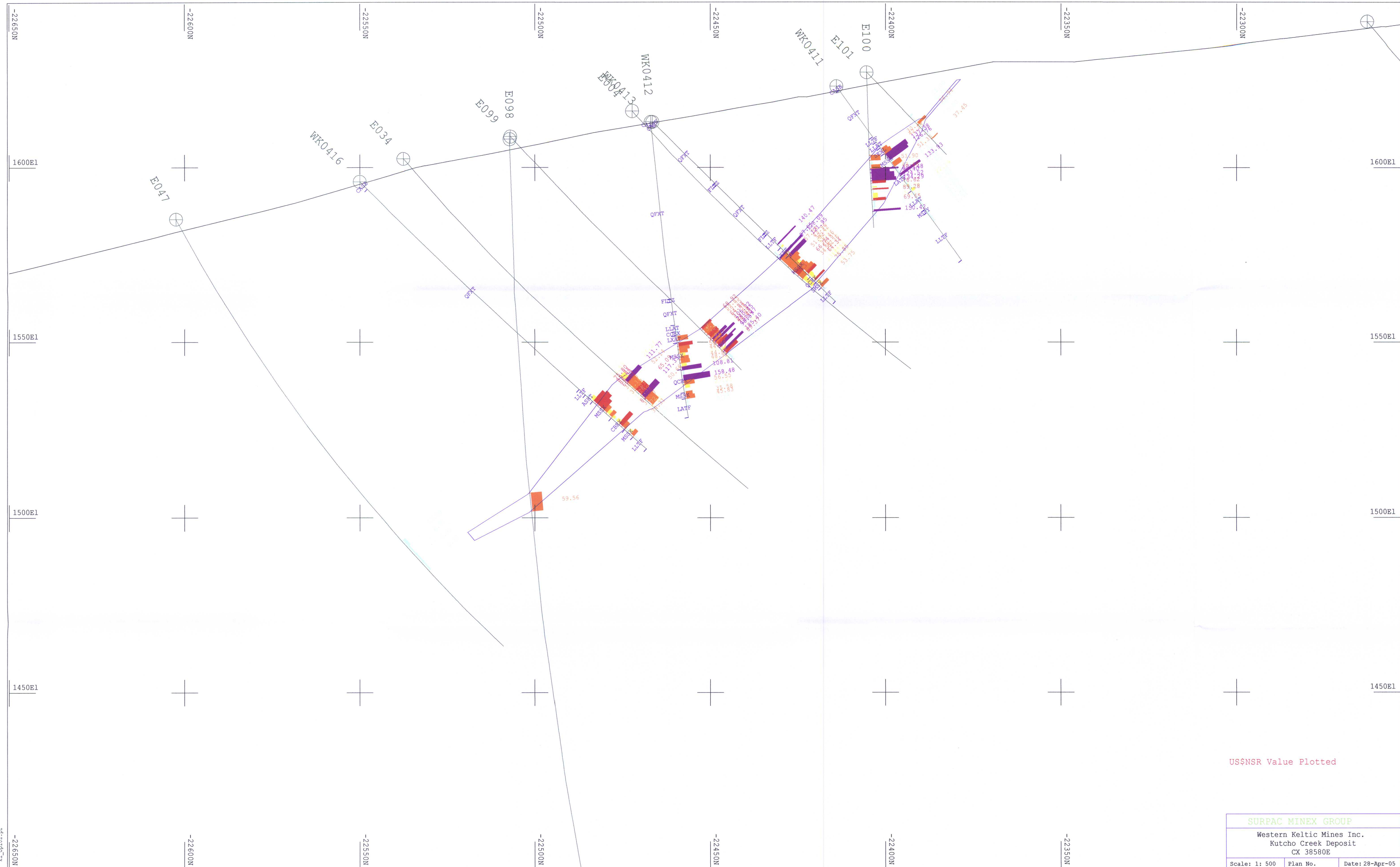


US\$NSR Values plotted.

SURPAC MINEX GROUP		
Western Keltic Mines Inc.		
Kutcho Creek Deposit		
CX 38520E		
Scale: 1: 500	Plan No.	Date: 28-Apr-05

GEOLOGICAL SURVEY BRANCH
ASSESSMENT REPORT

27.743



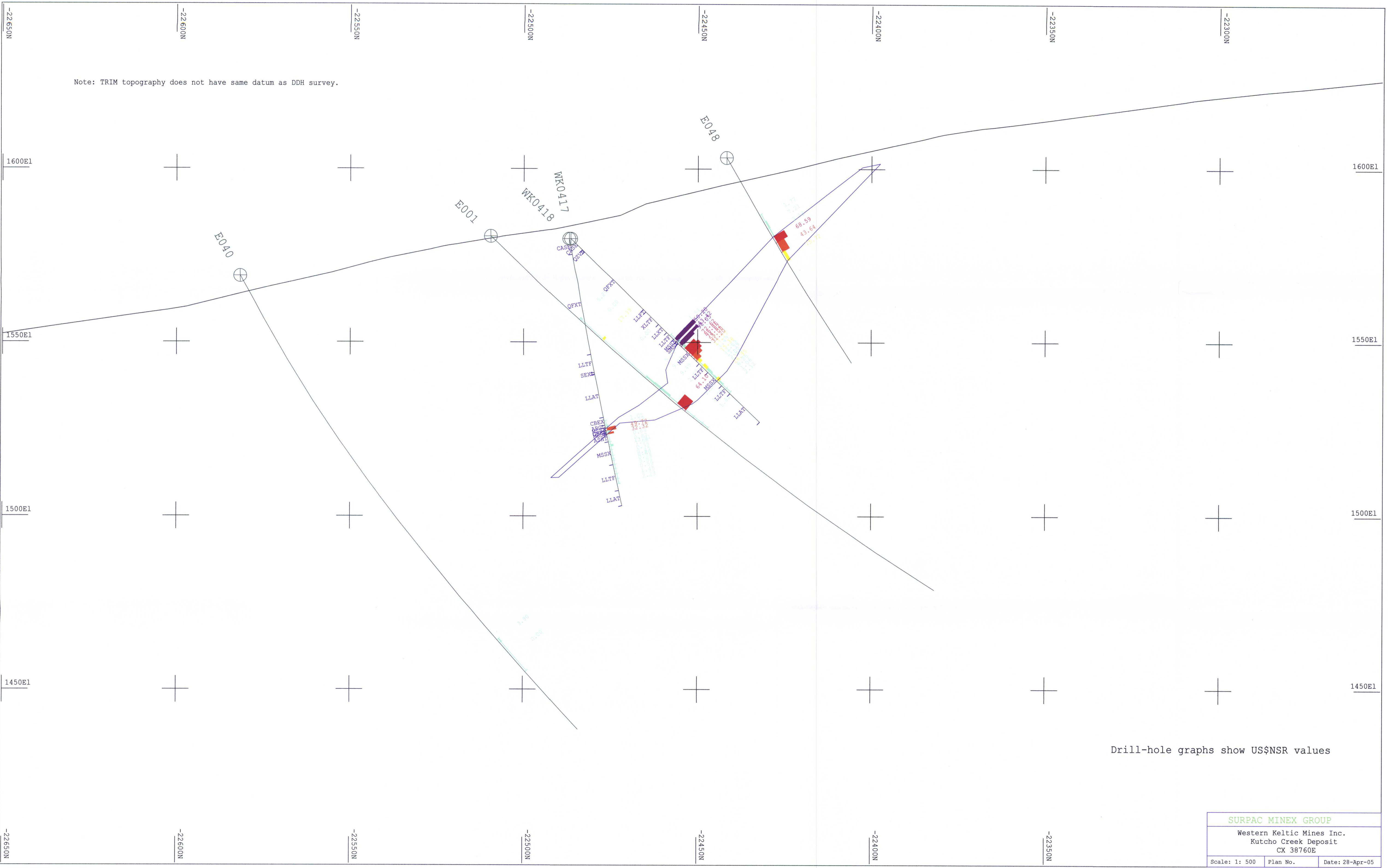
US\$NSR Value Plotted

SURPAC MINEX GROUP		
Western Keltic Mines Inc. Kutcho Creek Deposit CX 38580E		
Scale: 1: 500	Plan No.	Date: 28-Apr-05

GEOLOGICAL SURVEY BRANCH
ASSESSMENT REPORT

27.743

Note: TRIM topography does not have same datum as DDH survey.

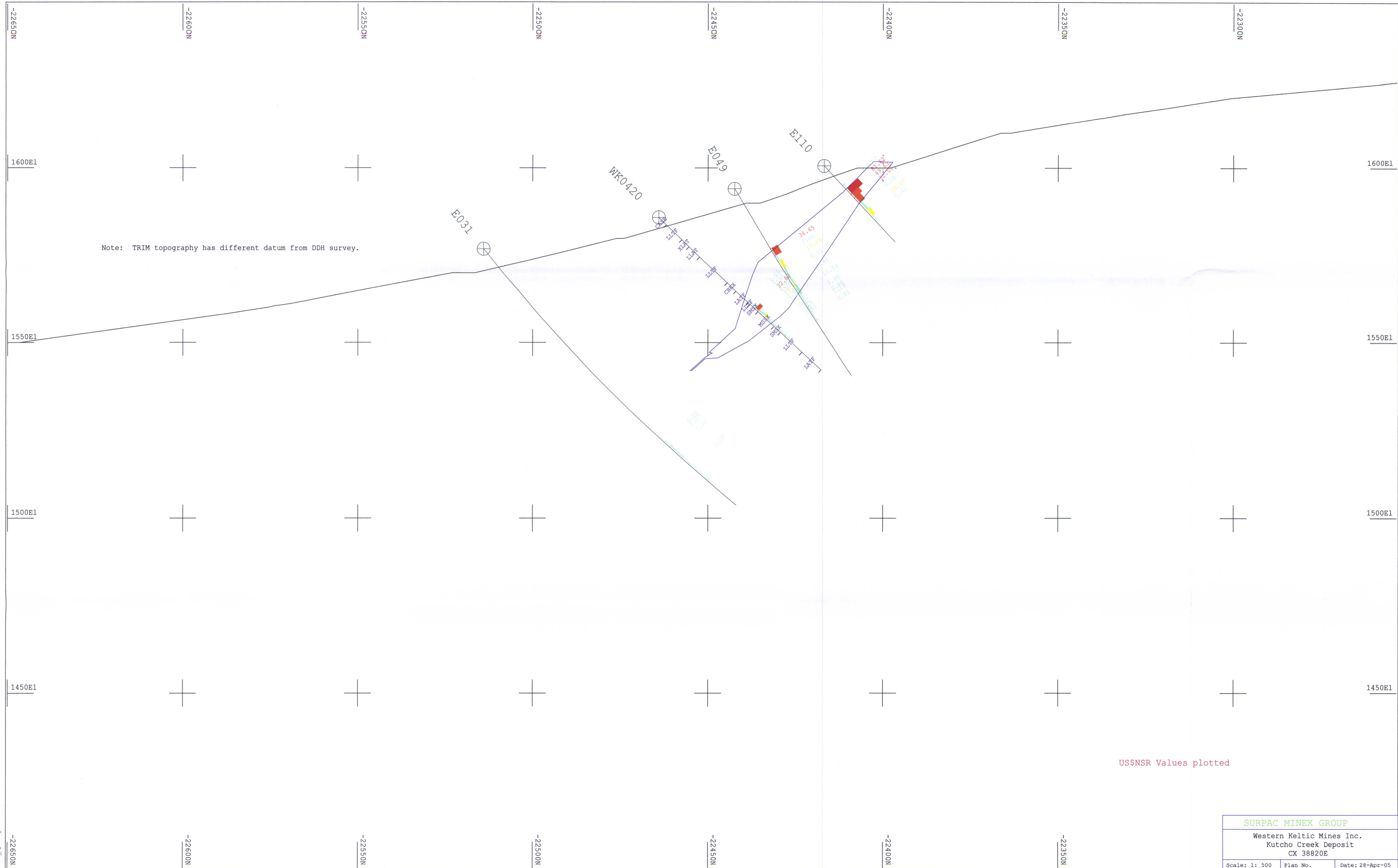


Drill-hole graphs show US\$NSR values

SURPAC MINEX GROUP		
Western Keltic Mines Inc.		
Kutcho Creek Deposit		
CX 38760E		
Scale: 1: 500	Plan No.	Date: 28-Apr-05

GEOLOGICAL SURVEY BRANCH
ASSESSMENT REPORT

27.743



Note: TRIM topography has different datum from DDH survey.

US\$NSR Values plotted

SURPAC MINEX GROUP		
Western Keltic Mines Inc.		
Kutcho Creek Deposit		
CX 38820E		
Scale: 1: 500	Plan No.	Date: 28-Apr-05

GEOLOGICAL SURVEY BRANCH
ASSESSMENT REPORT

27.743

k1 x010d01