

ASSESSMENT REPORT

**Diamond Drilling, Wacker Drilling,
IP, Resistivity & Ground Magnetic Geophysical Surveys,
Silt, Soil & Rock Geochemical Sampling,
Trenching and Prospecting**

On the

KINASKAN LAKE PROPERTY,

GJ PROJECT, 2004

*Liard Mining Division,
British Columbia, Canada*

Latitude: 57° 39' 21" N
Longitude: 130° 15' 21" W
UTM: 425062 E 6390993 N; Zone 9

NTS; 104G-069

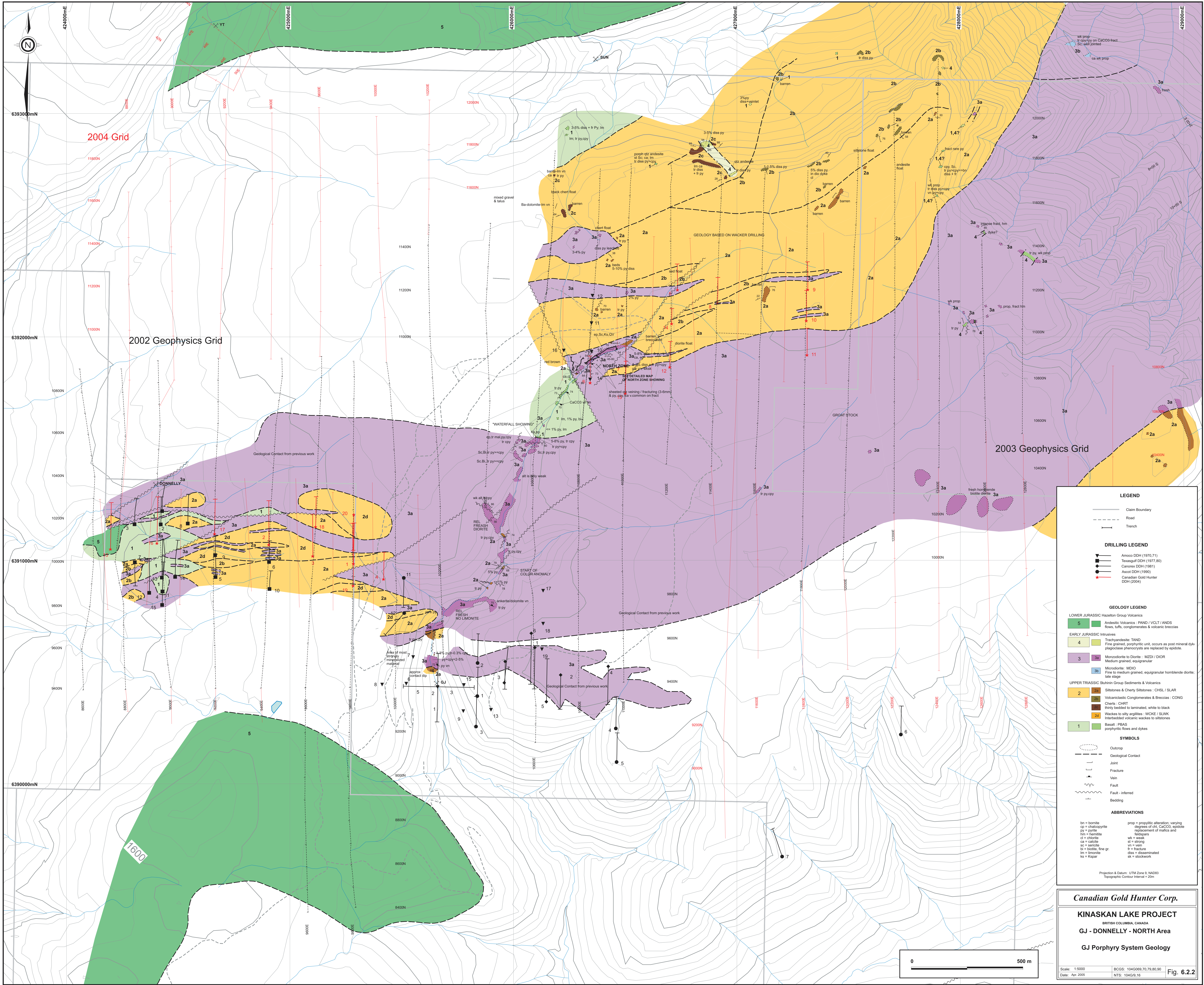
For

CANADIAN GOLD HUNTER CORP.

*2101-885 West Georgia St.
Vancouver, B.C., V6C-3E8
Canada*

Prepared By:
Dave Mehner, MSc., P. Geo.

May 20, 2005



LEGEND

- Claim Boundary
- Road
- Trench

DRILLING LEGEND

- Amoco DDH (1970-71)
- Texasgulf DDH (1977-80)
- Canorex DDH (1981)
- Amoco DDH (1990)
- Canadian Gold Hunter DDH (2004)

GEOLOGY LEGEND

LOWER JURASSIC Hazelton Group Volcanics

- 5: Andesitic Volcanics: PAND / VCLT / ANDS (flows, tuffs, conglomerates & volcanic breccias)

EARLY JURASSIC Intrusives

- 4: Trachyandesite: TAND (Fine grained, porphyritic unit, occurs as post mineral dyke, plagioclase phenocrysts are replaced by epidote)
- 3: Monzodiorite to Diorite: MZDI / DIOR (Medium grained, equigranular)
- 3a: Microdiorite: MDIO (Fine to medium grained, equigranular hornblende diorite, late stage)

UPPER TRIASSIC Stuhlin Group Sediments & Volcanics

- 2: Siltstones & Cherty Siltstones: CHSL / SLAR (Volcaniclastic Conglomerates & Breccias: CONG)
- 2a: Cherts: CHRT (finely bedded to laminated, white to black)
- 2b: Wackes to silty argillites: WCKE / SLWK (interbedded volcanic wackes to siltstones)
- 2d: Basalt: PBAS (porphyritic flows and dykes)

SYMBOLS

- Outcrop
- Geological Contact
- Joint
- Fracture
- Vein
- Fault
- Fault - inferred
- Bedding

ABBREVIATIONS

bn = hornblende	prop = propylitic alteration, varying degrees of ch, CaCO ₃ , epidote replacement of mafics and feldspars
cp = chalcopyrite	pr = pyrite
fr = hematite	wk = weak
cl = chlorite	st = strong
ca = calcite	fr = fracture
vt = vein	dis = disseminated
bl = barite, fine gr.	ka = stockwork
lm = limonite	
ka = Kippar	

Projection & Datum: UTM Zone 8, NAD83
Topographic Contour Interval = 20m

Canadian Gold Hunter Corp.

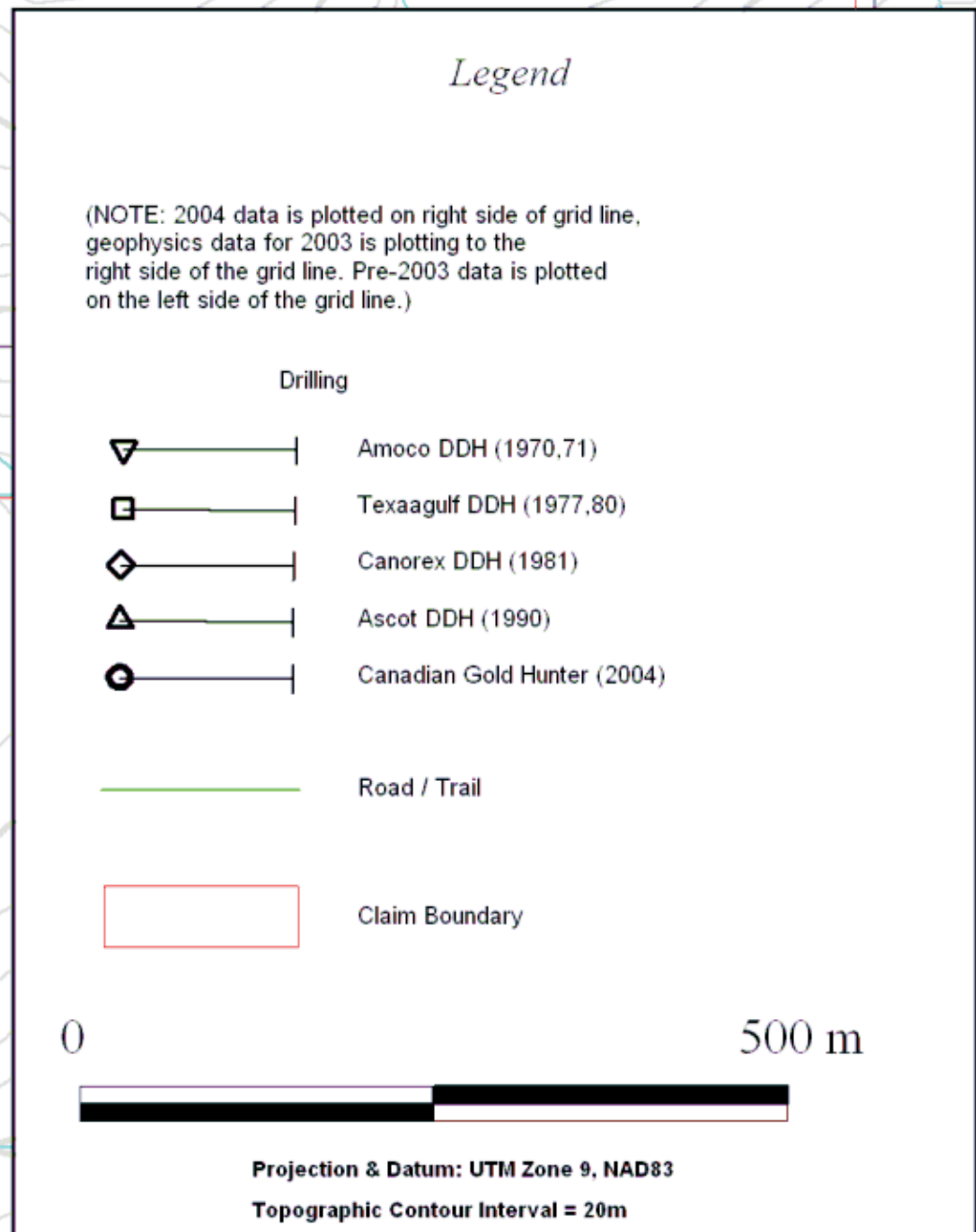
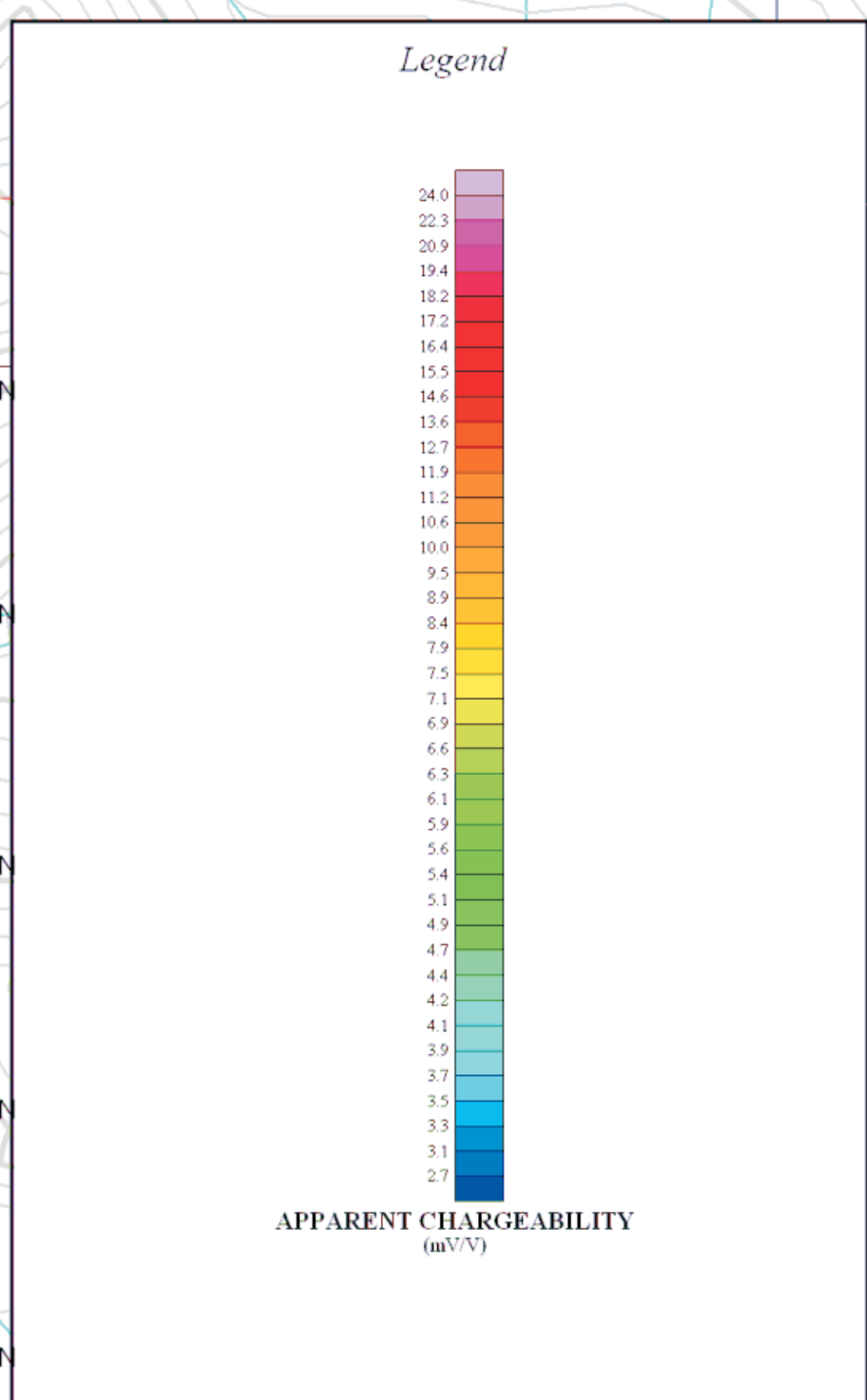
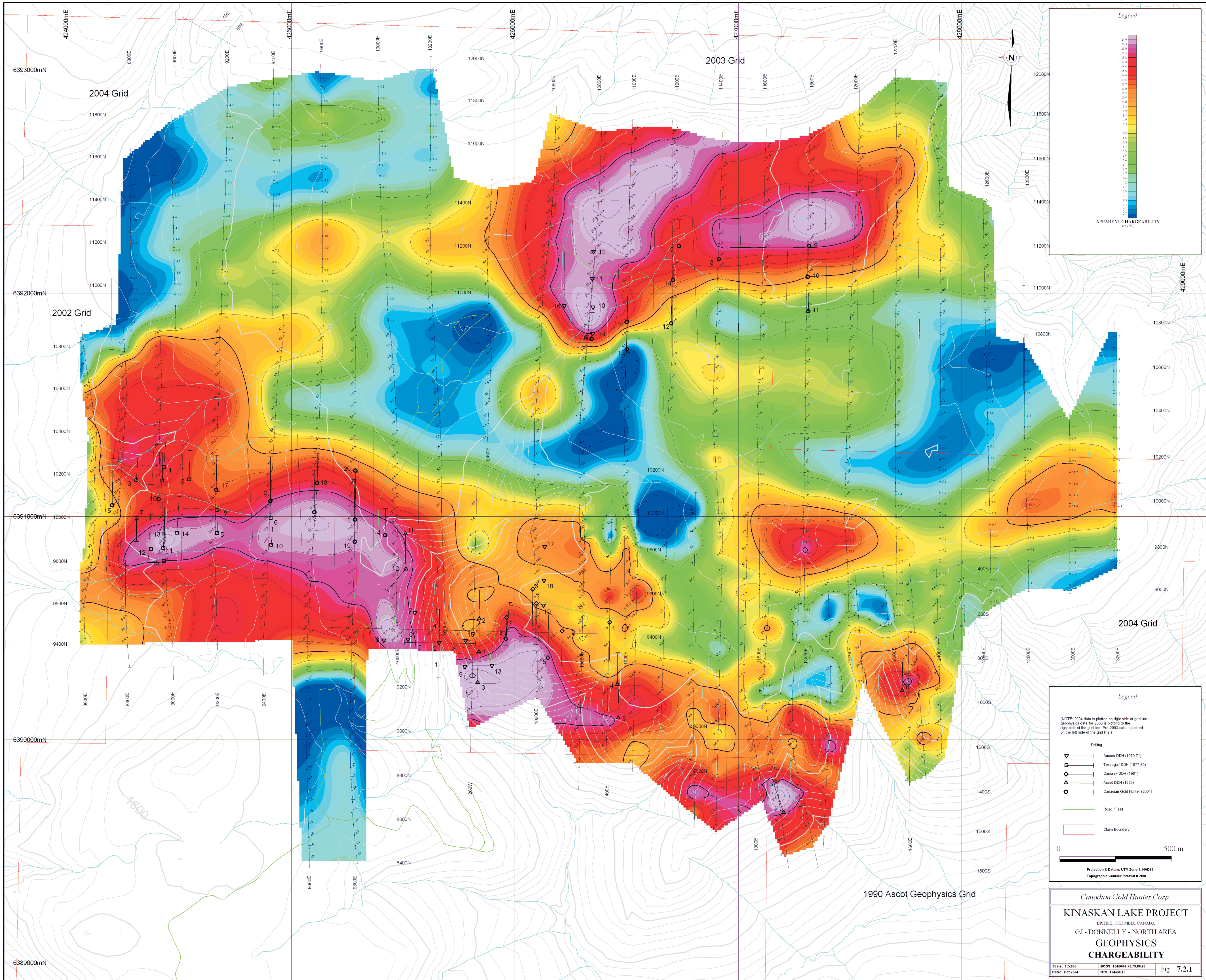
KINASKAN LAKE PROJECT
BRITISH COLUMBIA, CANADA

GJ - DONNELLY - NORTH Area

GJ Porphyry System Geology

Scale: 1:5000
Date: Apr 2005
BCGS: 104G089,70,79,80,90
NTS: 104G09,16

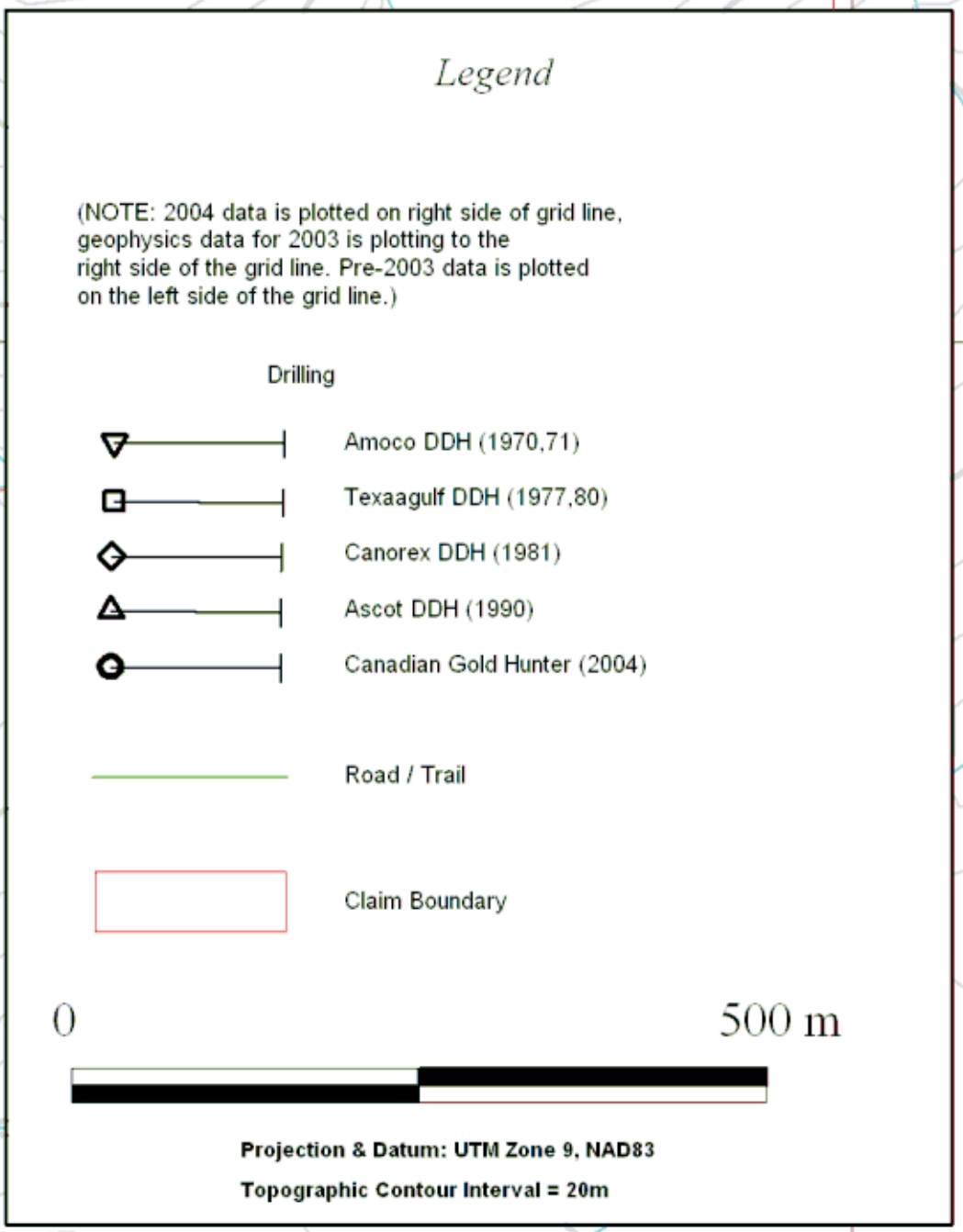
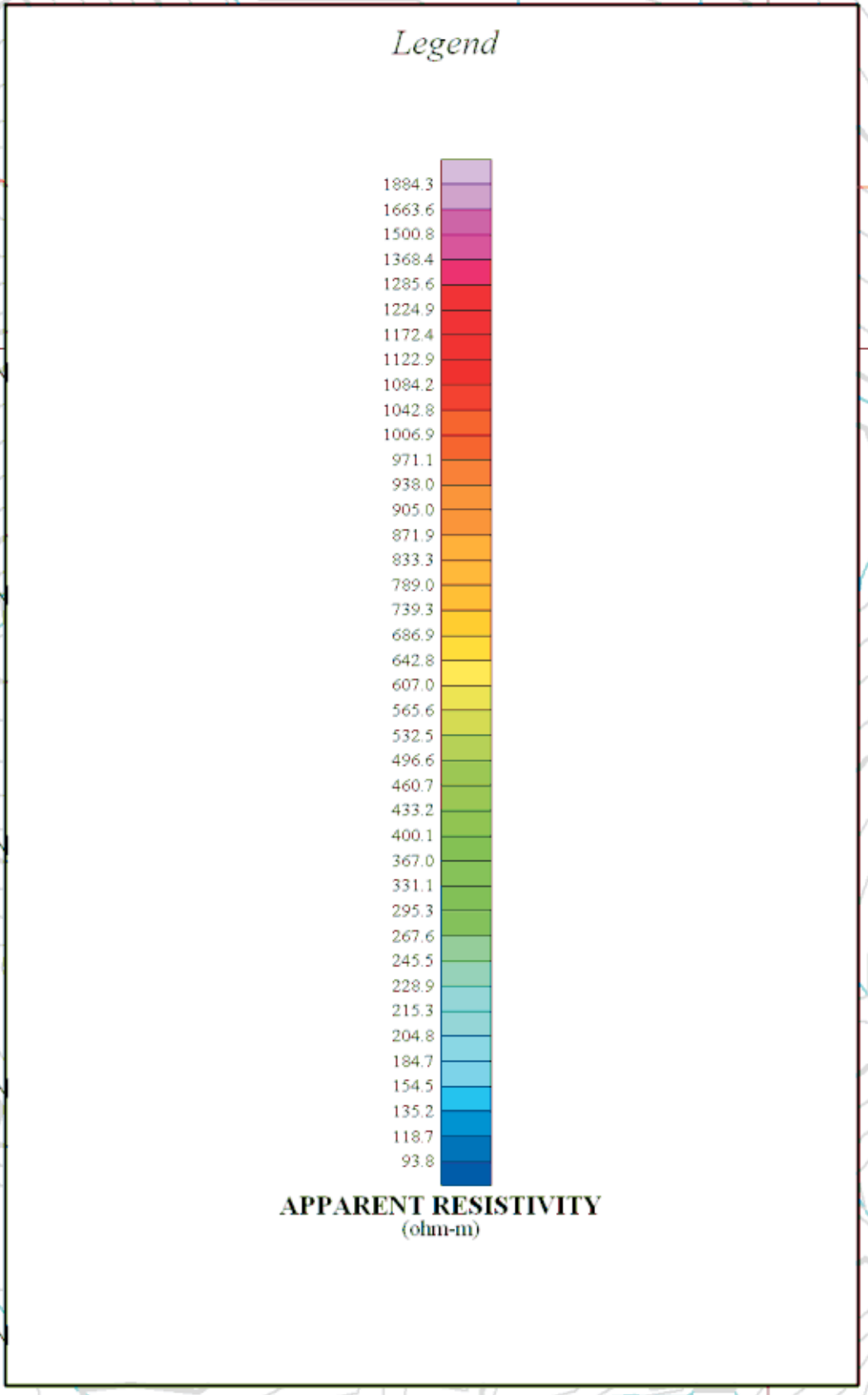
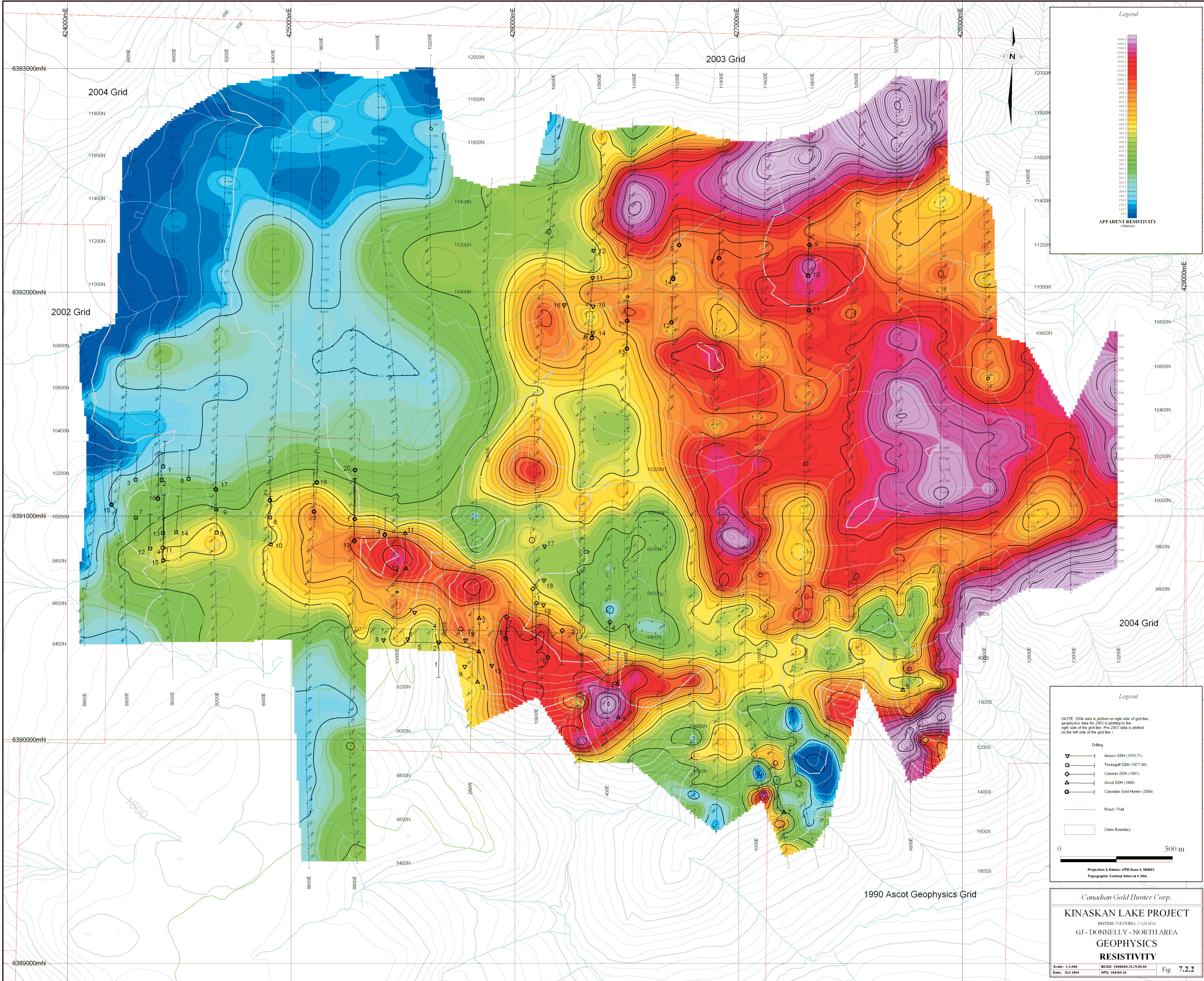
Fig. 6.2.2



Canadian Gold Hunter Corp.

KINASKAN LAKE PROJECT
BRITISH COLUMBIA, CANADA
GJ - DONNELLY - NORTH AREA
GEOPHYSICS CHARGEABILITY

Scale: 1:5,000
BCGS: 1040668,76,75,39,39
Date: Oct 2004
NTS: 104/G/16
Fig 7.2.1



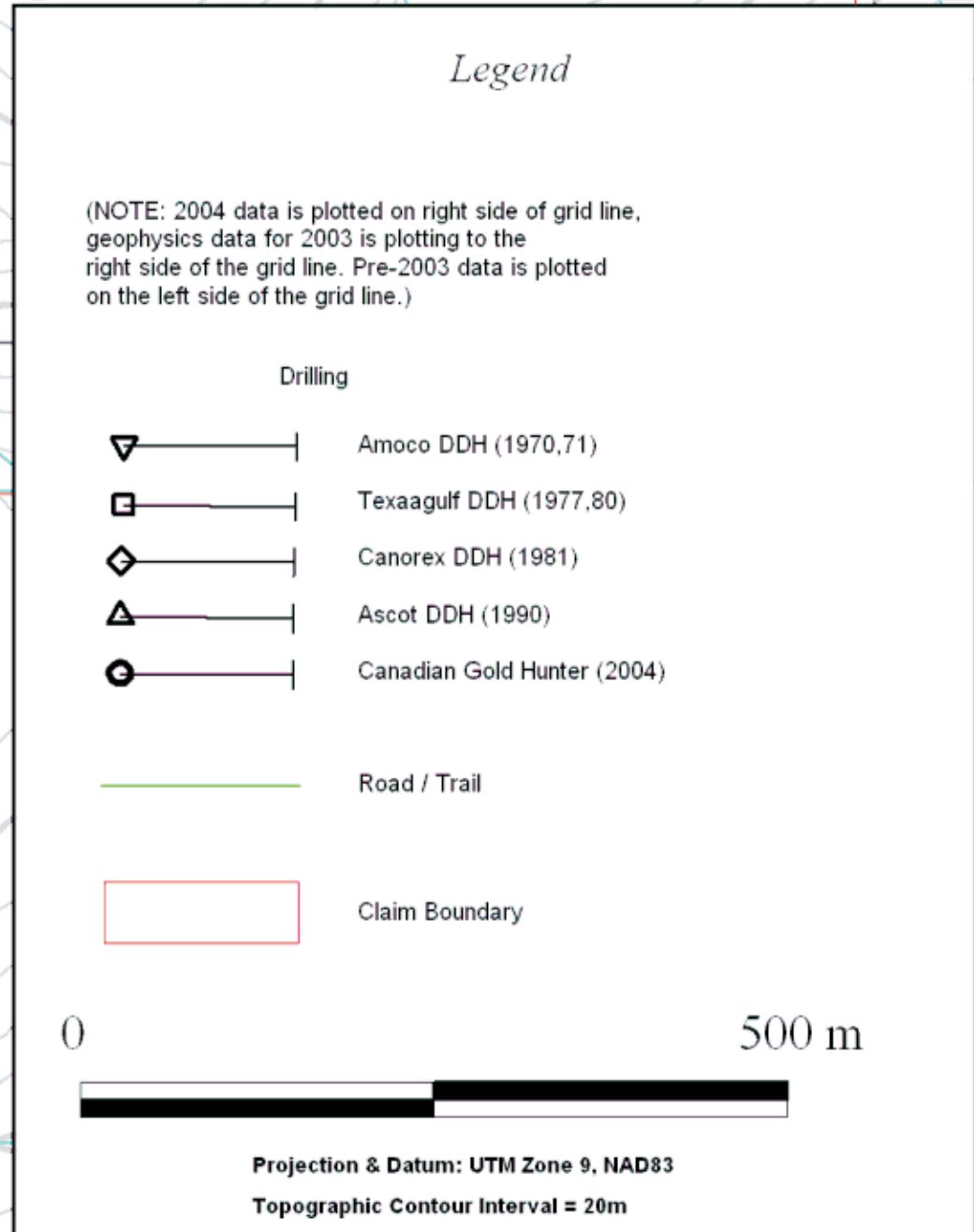
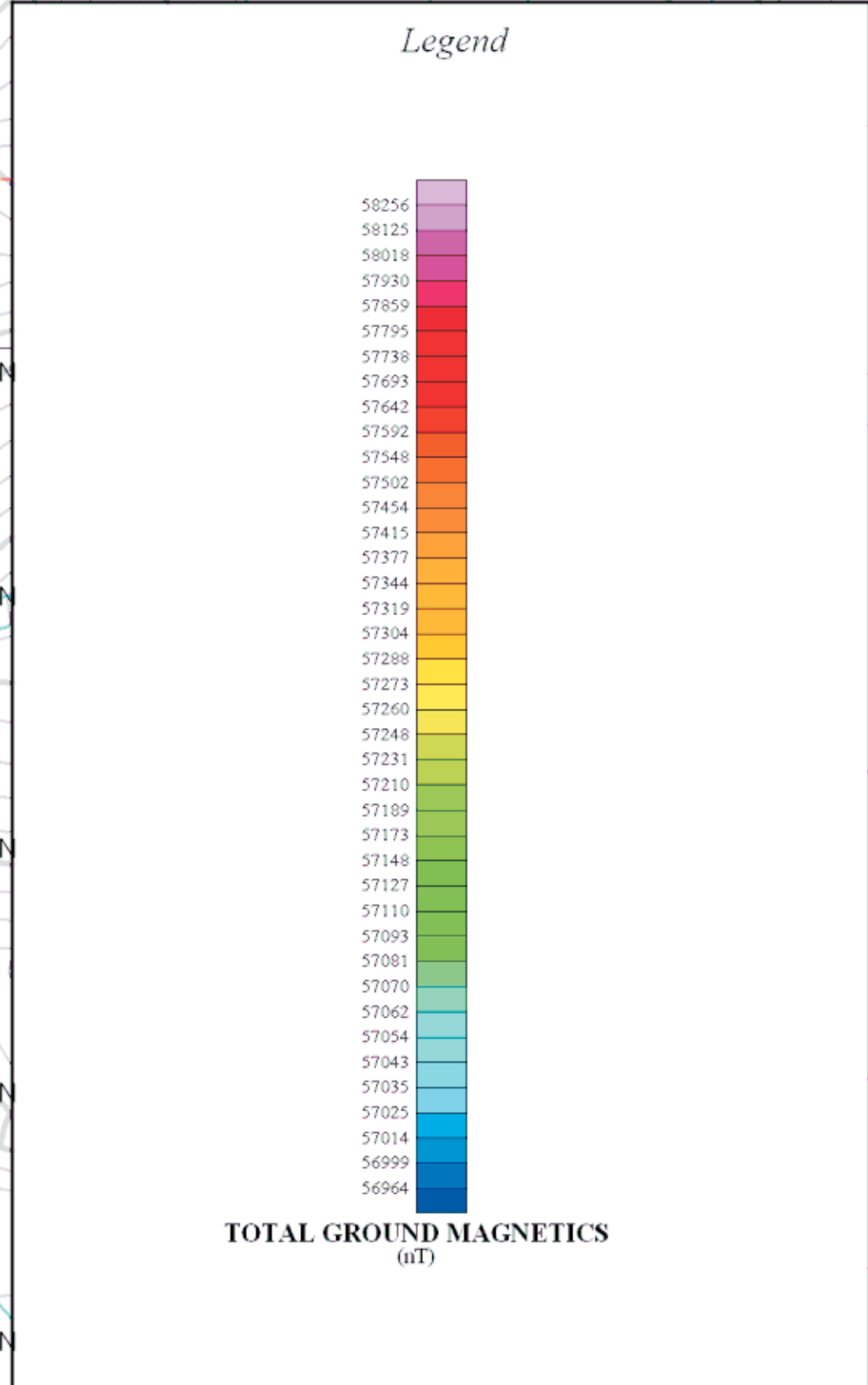
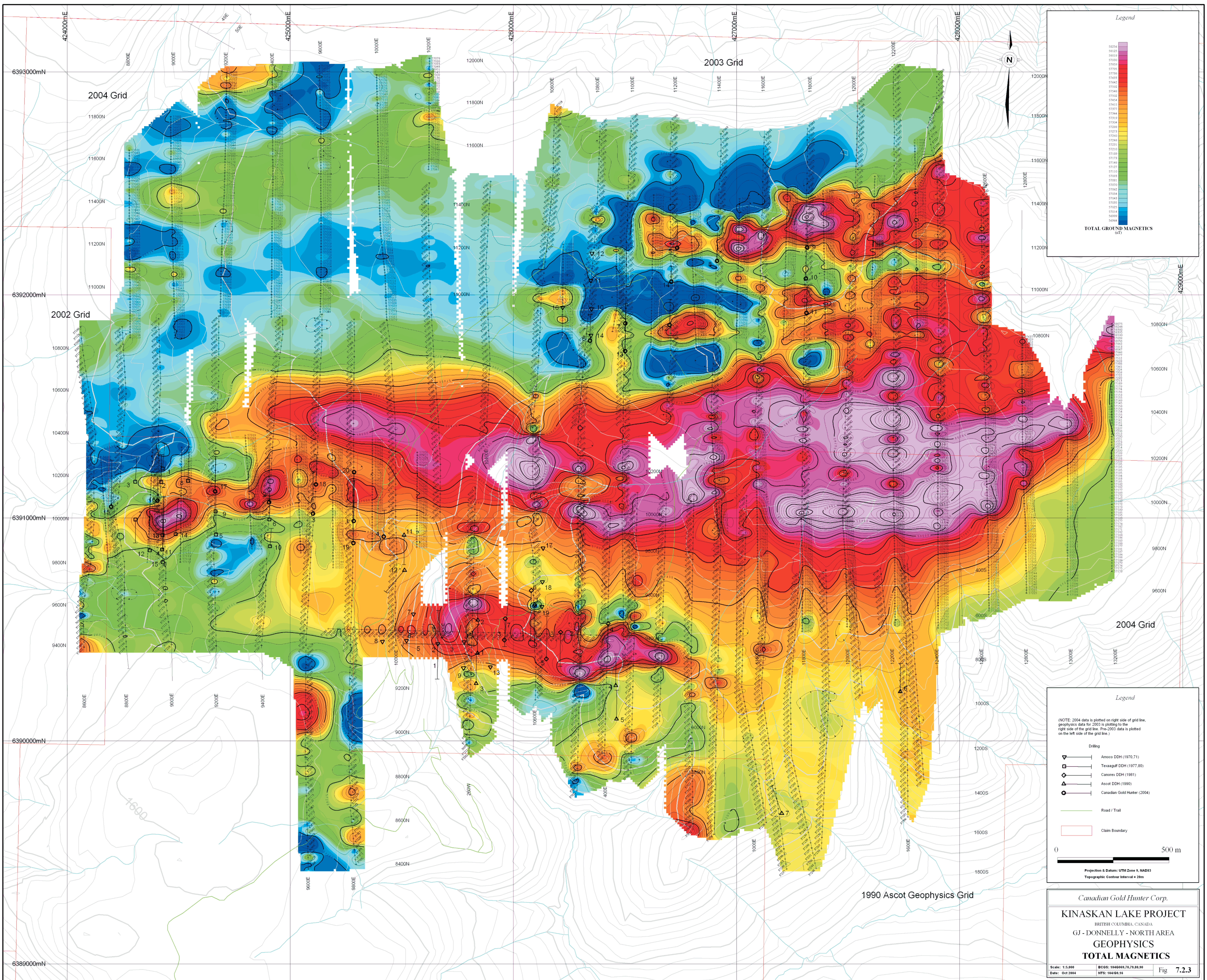
Canadian Gold Hunter Corp.

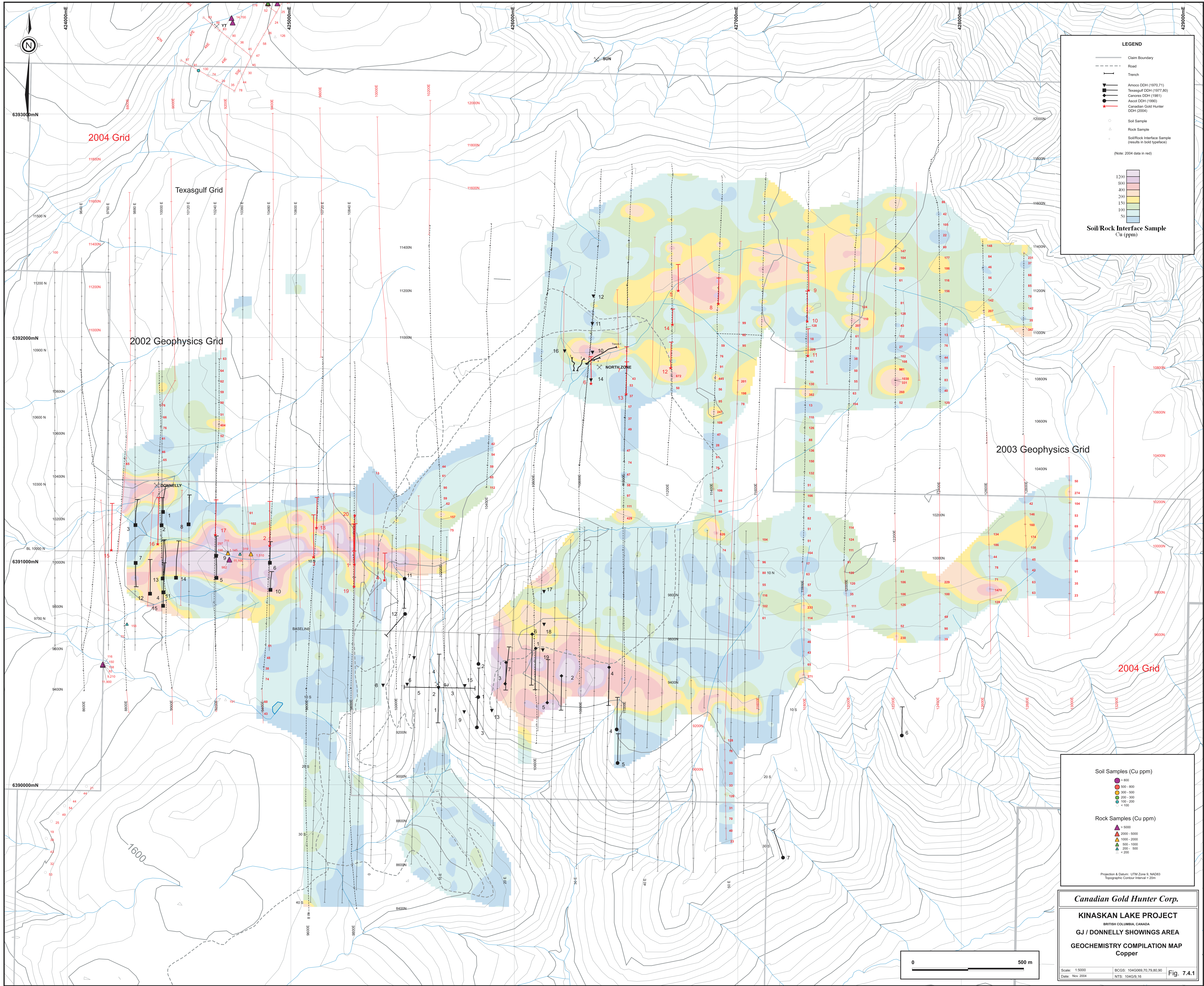
KINASKAN LAKE PROJECT
BRITISH COLUMBIA, CANADA
GJ - DONNELLY - NORTH AREA
GEOPHYSICS
RESISTIVITY

Scale: 1:5,000
Date: Oct 2004

BCGS: 1040669,76,78,80,88
NTS: 104/05,16

Fig 7.2.2





LEGEND

- Claim Boundary
- Road
- Trench
- Amoco DDH (1970,71)
- Texasgulf DDH (1977,80)
- Canorex DDH (1981)
- Ascol DDH (1995)
- Canadian Gold Hunter DDH (2004)
- Soil Sample
- Rock Sample
- Soil/Rock Interface Sample (results in bold typeface)

(Note: 2004 data in red)

Soil/Rock Interface Sample Cu (ppm)

1200
800
400
200
150
100
50

Soil Samples (Cu ppm)

- > 800
- 500 - 800
- 300 - 500
- 200 - 300
- 100 - 200
- < 100

Rock Samples (Cu ppm)

- > 5000
- 2000 - 5000
- 1000 - 2000
- 500 - 1000
- 200 - 500
- < 200

Projection & Datum: UTM Zone 9, NAD83
Topographic Contour Interval = 20m

Canadian Gold Hunter Corp.

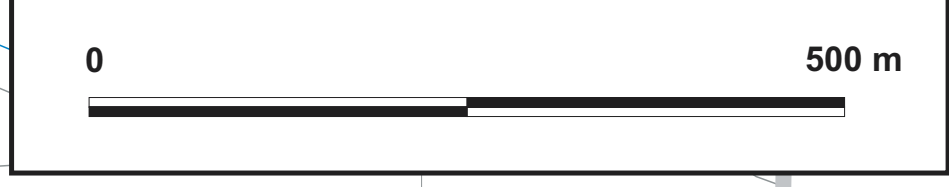
KINASKAN LAKE PROJECT
BRITISH COLUMBIA, CANADA

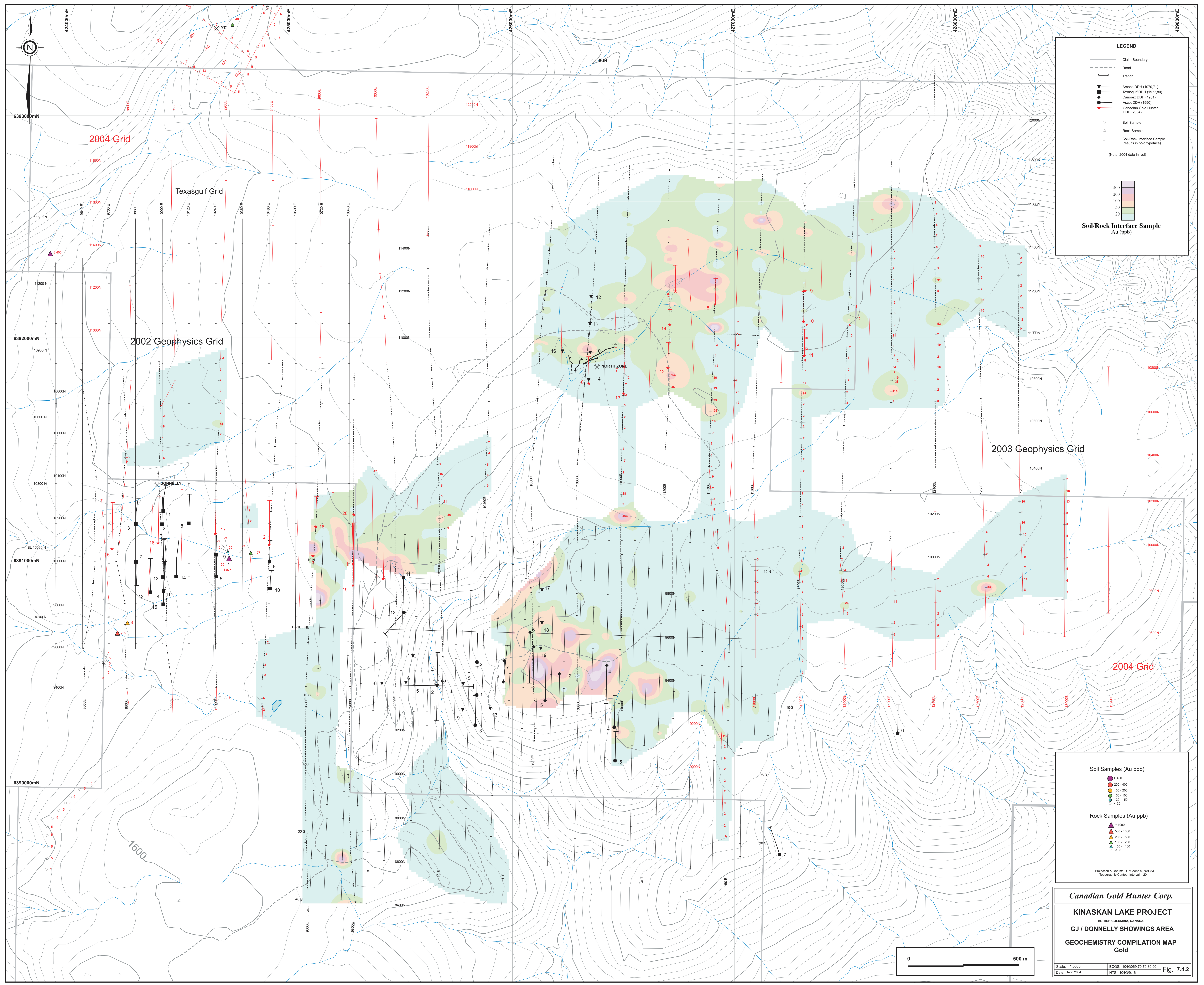
GJ / DONNELLY SHOWINGS AREA

GEOCHEMISTRY COMPILATION MAP
Copper

Scale: 1:5000
Date: Nov. 2004
BCGS: 104G069.70.76.80.90
NTS: 104G/9.16

Fig. 7.4.1





LEGEND

- Claim Boundary
- - - Road
- Trench
- ▼ Amoco DDH (1970-71)
- Texasgulf DDH (1977-80)
- ◆ Canorex DDH (1981)
- Ascol DDH (1990)
- ★ Canadian Gold Hunter DDH (2004)
- Soil Sample
- △ Rock Sample
- ▽ Soil/Rock Interface Sample (results in bold typeface)

(Note: 2004 data in red)

Soil/Rock Interface Sample Au (ppb)

- 400
- 200
- 100
- 50
- 20

Soil Samples (Au ppb)

- 400
- 200-400
- 100-200
- 50-100
- 20-50
- < 20

Rock Samples (Au ppb)

- 1000
- 500-1000
- 100-500
- 50-100
- < 50

Projection & Datum: UTM Zone 9, NAD83
Topographic Contour Interval = 20m

Canadian Gold Hunter Corp.

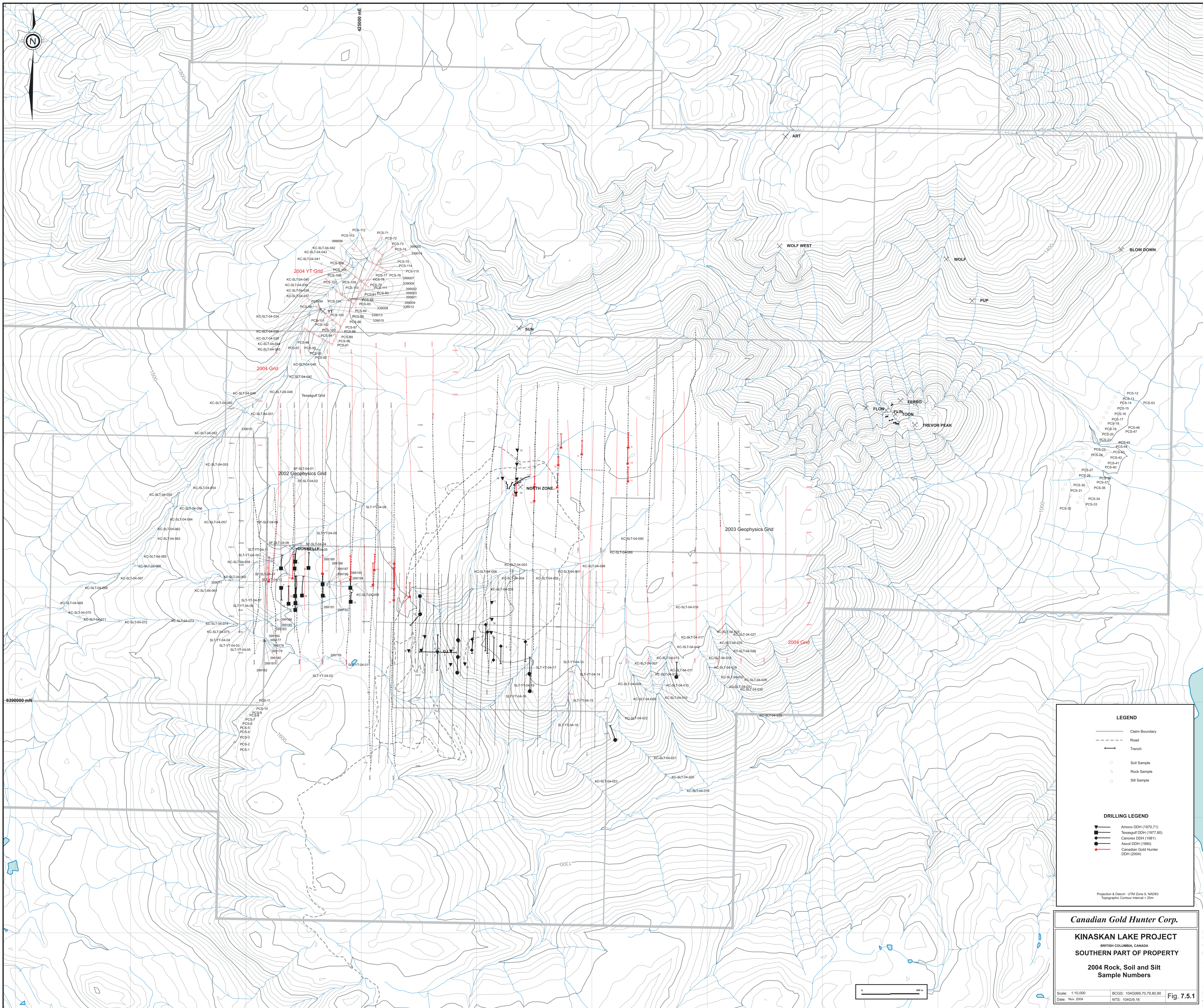
KINASKAN LAKE PROJECT
BRITISH COLUMBIA, CANADA

GJ / DONNELLY SHOWINGS AREA
GEOCHEMISTRY COMPILATION MAP
Gold

Scale: 1:5000
Date: Nov 2004
BCGS: 104G069.70.79.80.90
NTS: 104G06.16

Fig. 7.4.2





LEGEND

- Claim Boundary
- - - Road
- Trench
- Soil Sample
- △ Rock Sample
- Silt Sample

DRILLING LEGEND

- ▼ Amoco DDH (1970,71)
- Texagulf DDH (1977,80)
- Canavea DDH (1981)
- ◆ Anzol DDH (1990)
- ★ Canadian Gold Hunter DDH (2004)

Projection & Datum: UTM Zone 9, NAD83
Topographic Contour Interval = 20m

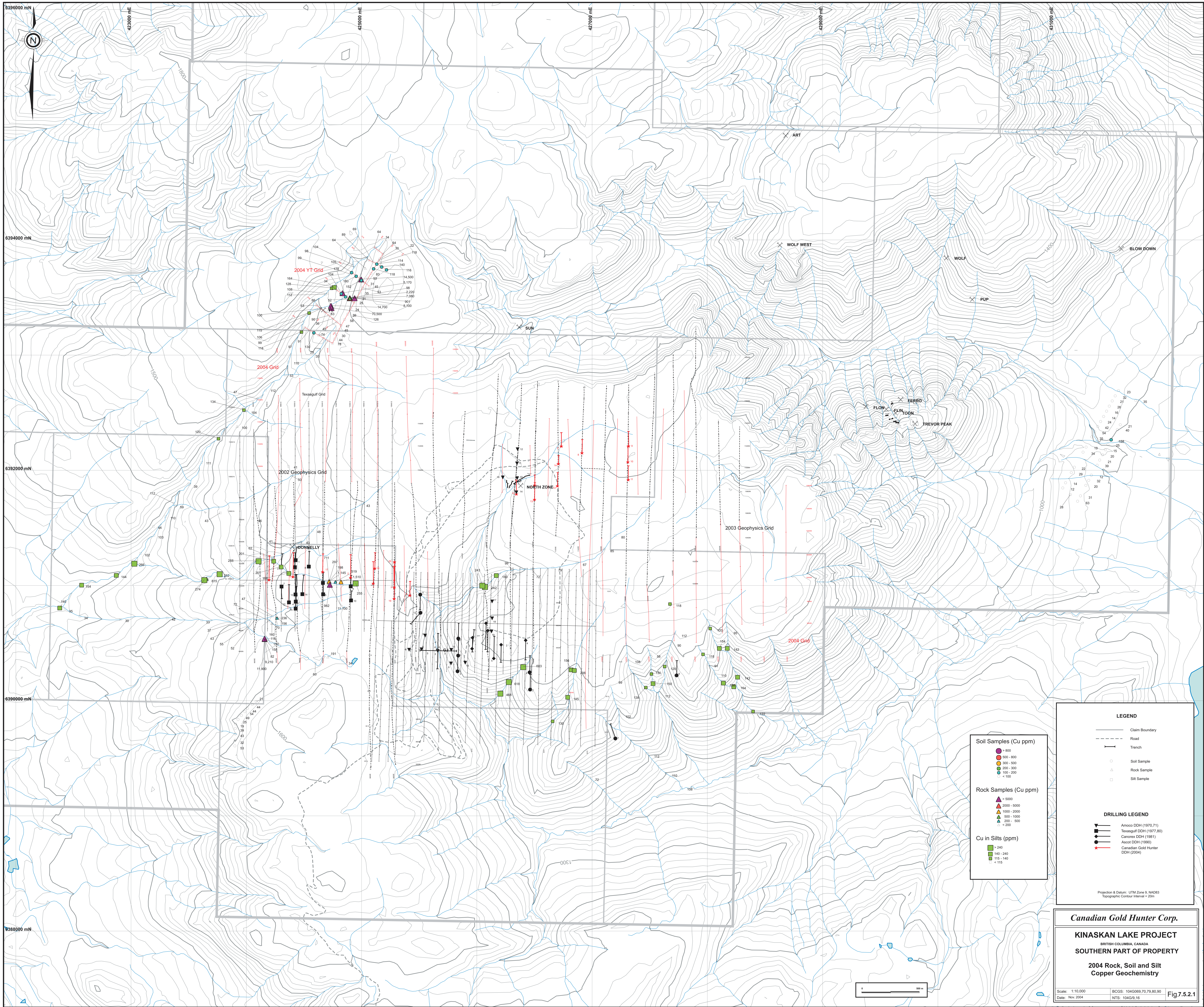
Canadian Gold Hunter Corp.

KINASKAN LAKE PROJECT
BRITISH COLUMBIA, CANADA
SOUTHERN PART OF PROPERTY

2004 Rock, Soil and Silt Sample Numbers

Scale: 1:10,000
Date: Nov. 2004
BCGS: 104G069.70,79,80,90
NTS: 104G/9,16

Fig. 7.5.1



Soil Samples (Cu ppm)

- > 800
- 500 - 800
- 200 - 500
- 100 - 200
- < 100

Rock Samples (Cu ppm)

- ▲ > 5000
- ▲ 3000 - 5000
- ▲ 2000 - 3000
- ▲ 500 - 1000
- ▲ 200 - 500
- ▲ < 200

Cu in Silts (ppm)

- > 240
- 140 - 240
- 115 - 140
- < 115

LEGEND

- Claim Boundary
- Road
- Trench
- Soil Sample
- △ Rock Sample
- Silt Sample

DRILLING LEGEND

- Amoco DDH (1970,71)
- Texasgulf DDH (1977,80)
- Canorex DDH (1981)
- Assoc DDH (1990)
- Canadian Gold Hunter DDH (2004)

Projection & Datum: UTM Zone 9, NAD83
Topographic Contour Interval = 20m

Canadian Gold Hunter Corp.

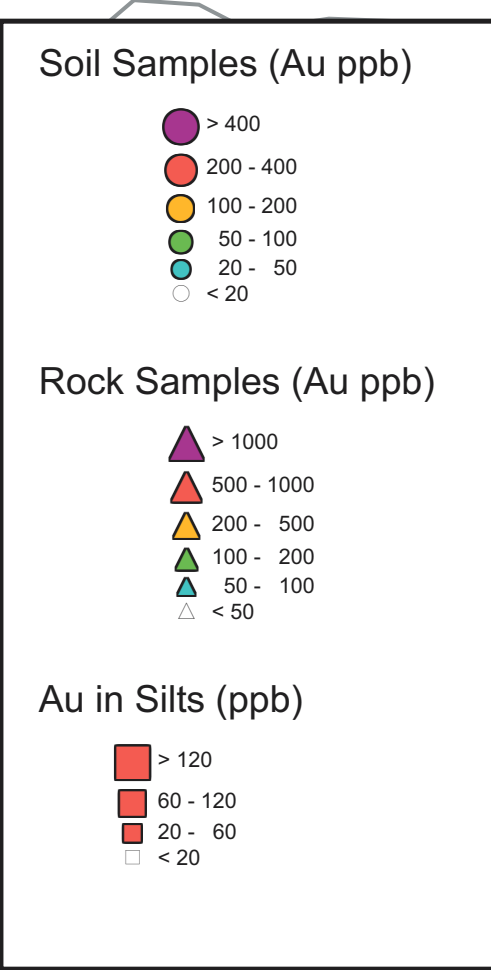
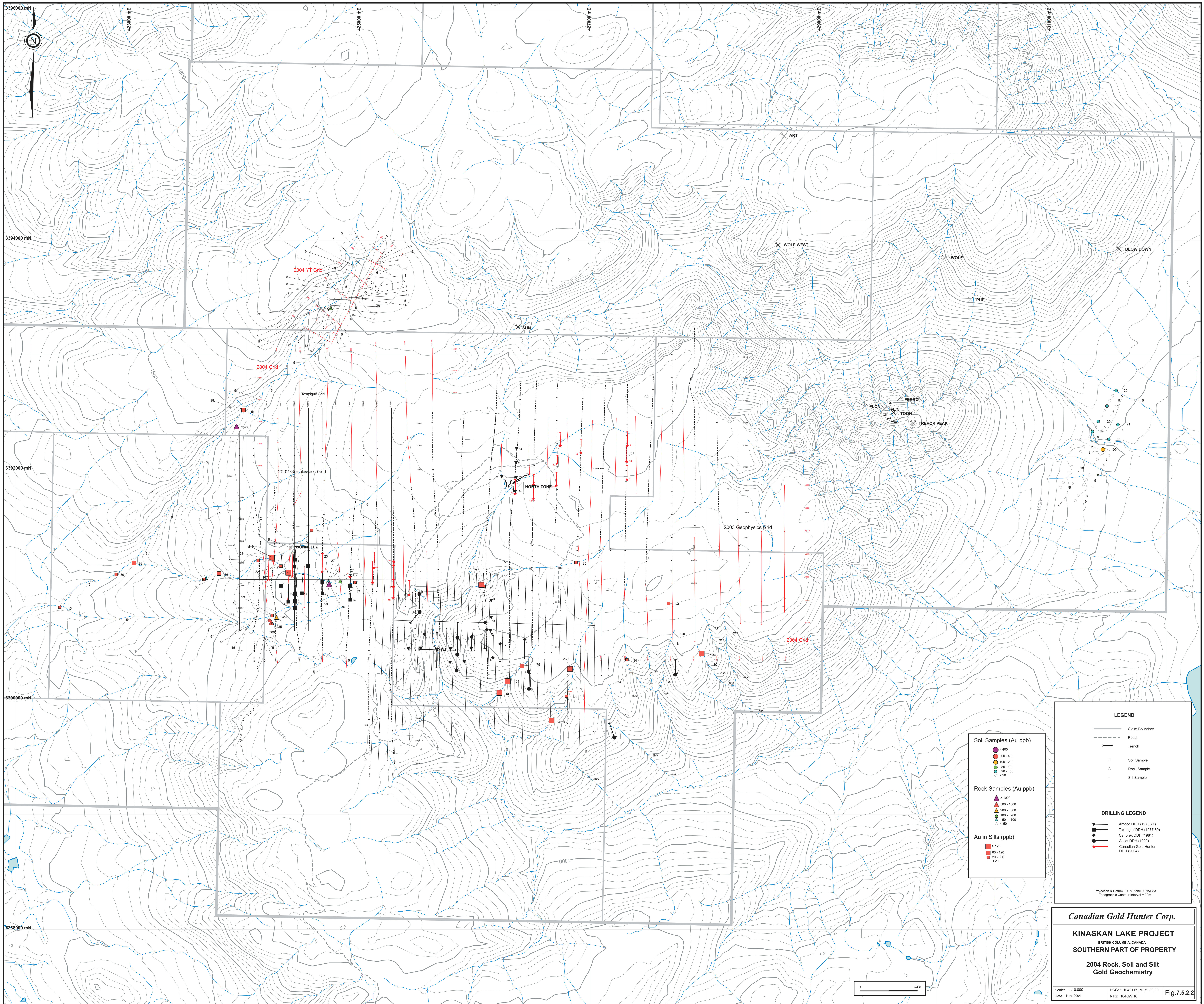
KINASKAN LAKE PROJECT
BRITISH COLUMBIA, CANADA

SOUTHERN PART OF PROPERTY

**2004 Rock, Soil and Silt
Copper Geochemistry**

Scale: 1:10,000 BCGS: 104G069,70,79,80,90
Date: Nov 2004 NTS: 104G/9,16 Fig.7.5.2.1





LEGEND

- Claim Boundary
- - - Road
- Trench
- Soil Sample
- △ Rock Sample
- Silt Sample

DRILLING LEGEND

- ▼ Amoco DDH (1970,71)
- Texasgulf DDH (1977,80)
- Canorex DDH (1981)
- ▲ Alcoa DDH (1990)
- Canadian Gold Hunter DDH (2004)

Projection & Datum: UTM Zone 9, NAD83
Topographic Contour Interval = 20m

Canadian Gold Hunter Corp.

KINASKAN LAKE PROJECT
BRITISH COLUMBIA, CANADA
SOUTHERN PART OF PROPERTY

2004 Rock, Soil and Silt Gold Geochemistry

Scale: 1:10,000
Date: Nov. 2004

BCGS: 104G069,70,79,80,90
NTS: 104G/9,16

Fig.7.5.2.2

