

ASSESSMENT REPORT

On

PROSPECTING

RECEIVED
JUL 12 2005
Gold Commissioner's Office
VANCOUVER, B.C.

CHAMP PROPERTY

Champion Creek Area
Nelson Mining Division

NTS 82F022

UTM Co-Ordinates 5454800N 0455235E

By

TOM KENNEDY, Prospector

April, 2005

27811

TABLE OF CONTENTS

| | Page |
|--------------------------------------|------|
| 1.00 INTRODUCTION | 2 |
| 1.10 Location and Access | 2 |
| 1.20 Property | 2 |
| 1.30 Physiography | 2 |
| 1.40 History of Previous Work | 2 |
| 1.50 Purpose of Work | 2 |
| | |
| 2.00 GEOLOGY | 2 |
| | |
| 3.00 PROSPECTING | 6 |
| | |
| 4.00 CONCLUSIONS and RECOMMENDATIONS | 8 |
| | |
| 5.00 STATEMENT OF EXPENDITURES | 8 |
| | |
| 6.00 AUTHOR'S QUALIFICATIONS | 8 |
| | |
| 7.00 REFERENCES | 8 |

LIST OF ILLUSTRATIONS

| | | |
|-----------|-----------------------|---|
| Figure 1. | Property Location Map | 3 |
| Figure 2. | Claim Map | 4 |
| Figure 3. | Regional Geology Map | 5 |
| Figure 4. | Prospecting Map | 7 |

1.00 INTRODUCTION

This report describes the prospecting program on the CHAMP group of mineral claims along the eastern margin of the Champion Creek drainage during the 2004/05 year.

1.10 Location and Access

The CHAMP group of claims is centered at UTM Co-Ordinates 5454800N 0455235E (Fig. 1). The property is cut by Highway 3 approximately 11.5km Southeast of Castlegar, and can be accessed by a series of logging haul roads on either side of the highway.

1.20 Property

The CHAMP group of claims is a contiguous block of 6 two post mineral claims owned by Tom Kennedy (Fig. 2).

1.30 Physiography

The CHAMP mineral property is situated between 820m and 942m in elevation and consists of moderate to rugged topography in the Northwest portion of the Champion Creek drainage. Forest cover is a mixture of coniferous and deciduous species of trees with roughly a third of the property located within areas of re-grown old logging.

1.40 History of Previous Exploration

The CHAMP claims cover an area that has been held under tenure at various times. No previous reports covering the current area of the property have been found. During the prospecting program a number of small old workings were discovered on the claims however no historical reference to the area has yet been found.

1.50 Purpose of work

The purpose of the 2004 prospecting program was to search for a source to weakly elevated RGS Gold silt anomalies draining favorable geology.

2.00 GEOLOGY

The CHAMP claims are underlain by undifferentiated Rossland Group volcano-sedimentary rocks, which have been intruded by the Jurassic aged Bonnington Pluton. The property is in close proximity to the Champion Lakes Fault, a major North trending tertiary fault zone. Numerous narrow intrusive dykes ranging from lamprophyre to syenite occur on the property.

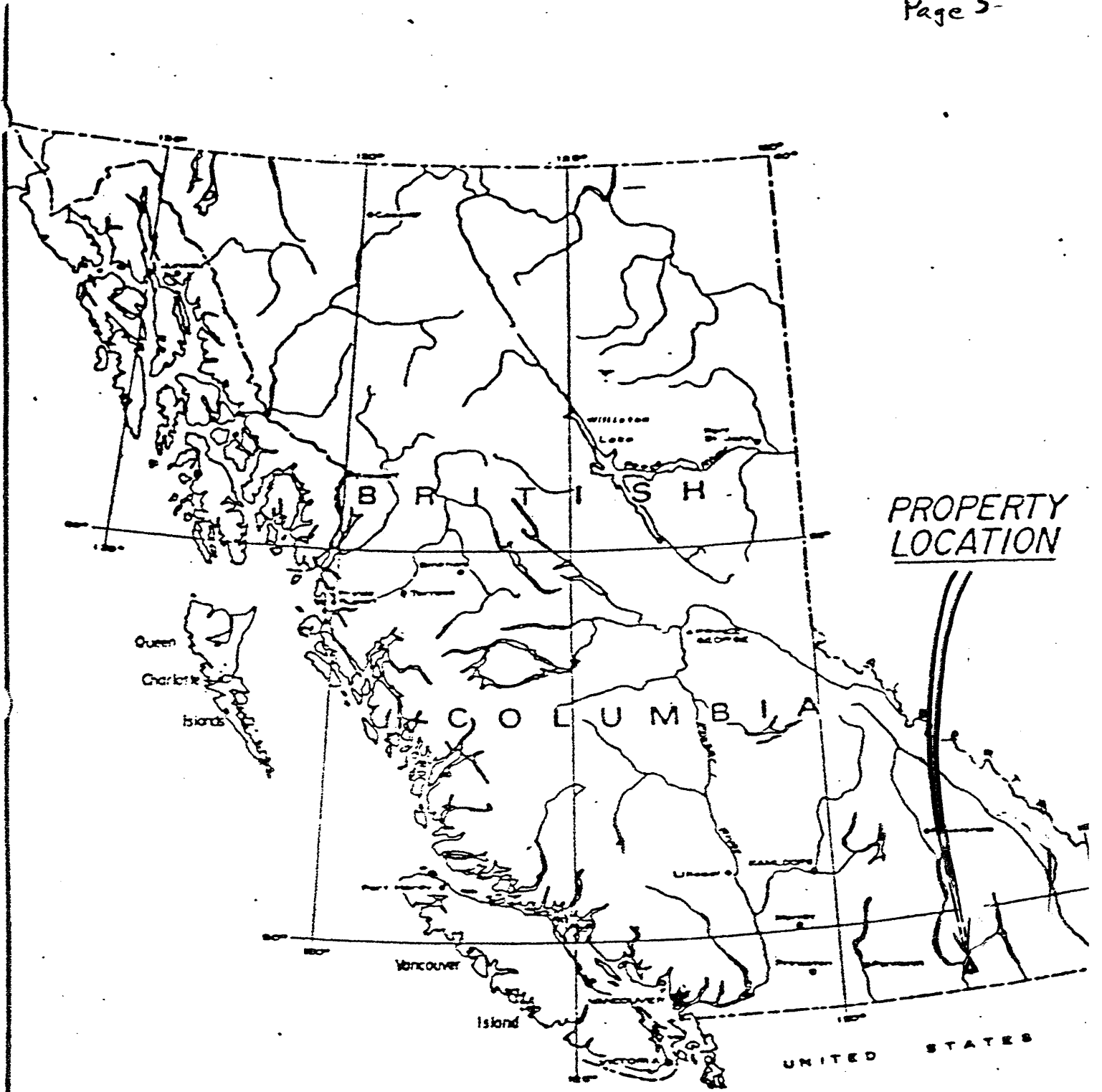
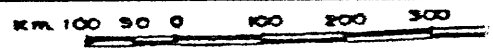


Figure 1.
CHAMP PROPERTY
LOCATION MAP



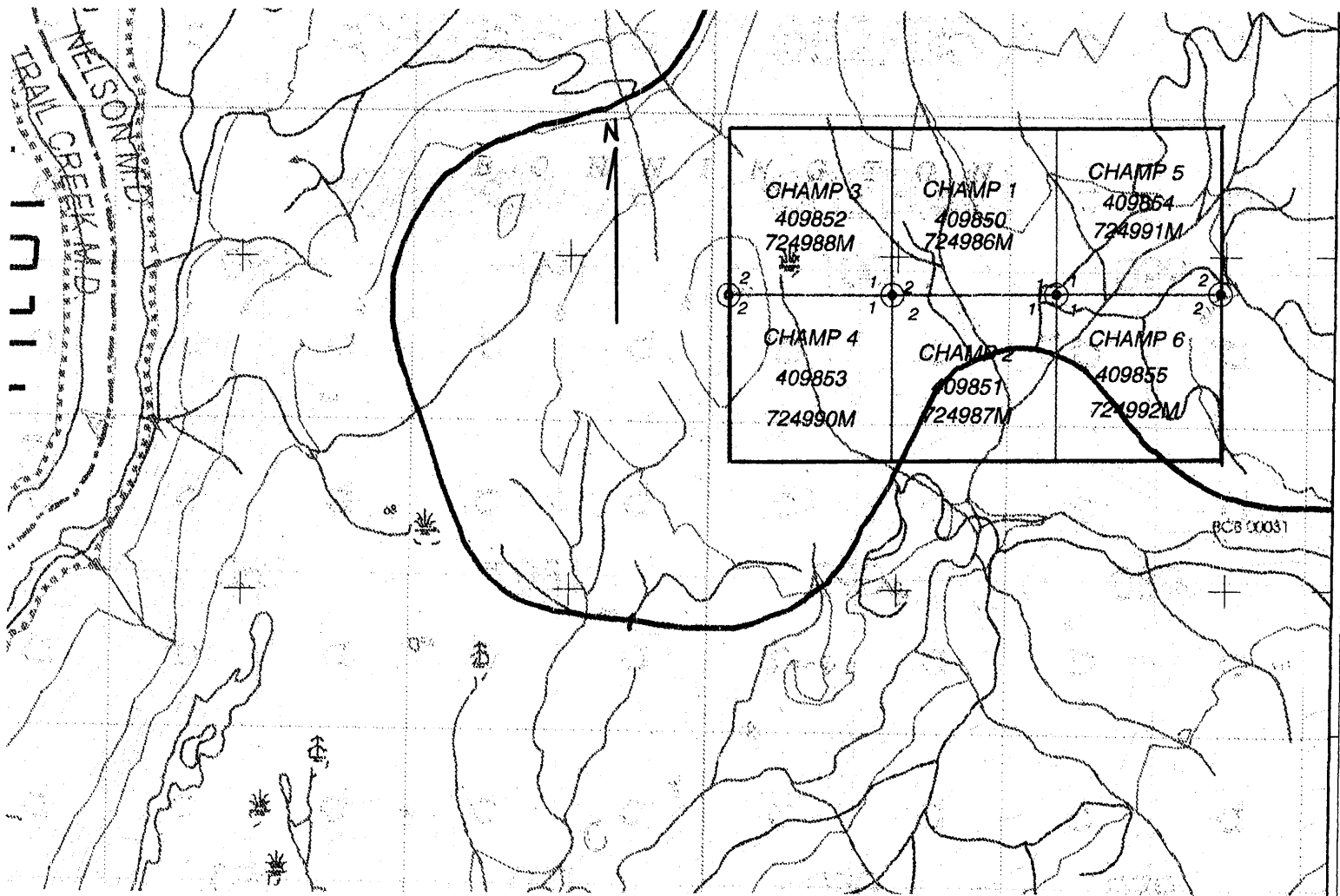


Figure 2. CHAMP CLAIM BLOCK
 Scale 1:20000
 0 100 200
 Feet



Figure 3. REGIONAL GEOLOGY

- mJb - Bonington Pluton
- IJr - Rosland Group
- cg - Castlegar Gneiss
- tg - Trail Gneiss

Scale 1:100,000 On 500m 2000m 4000m

From: Geoscience Map 1998-1
 GEOLOGICAL COMPILATION
 OF THE TRAIL MAP AREA
 SOUTHEASTERN B.C.
 Compiled by: Hoy, T. and Dunne, K.P.E.

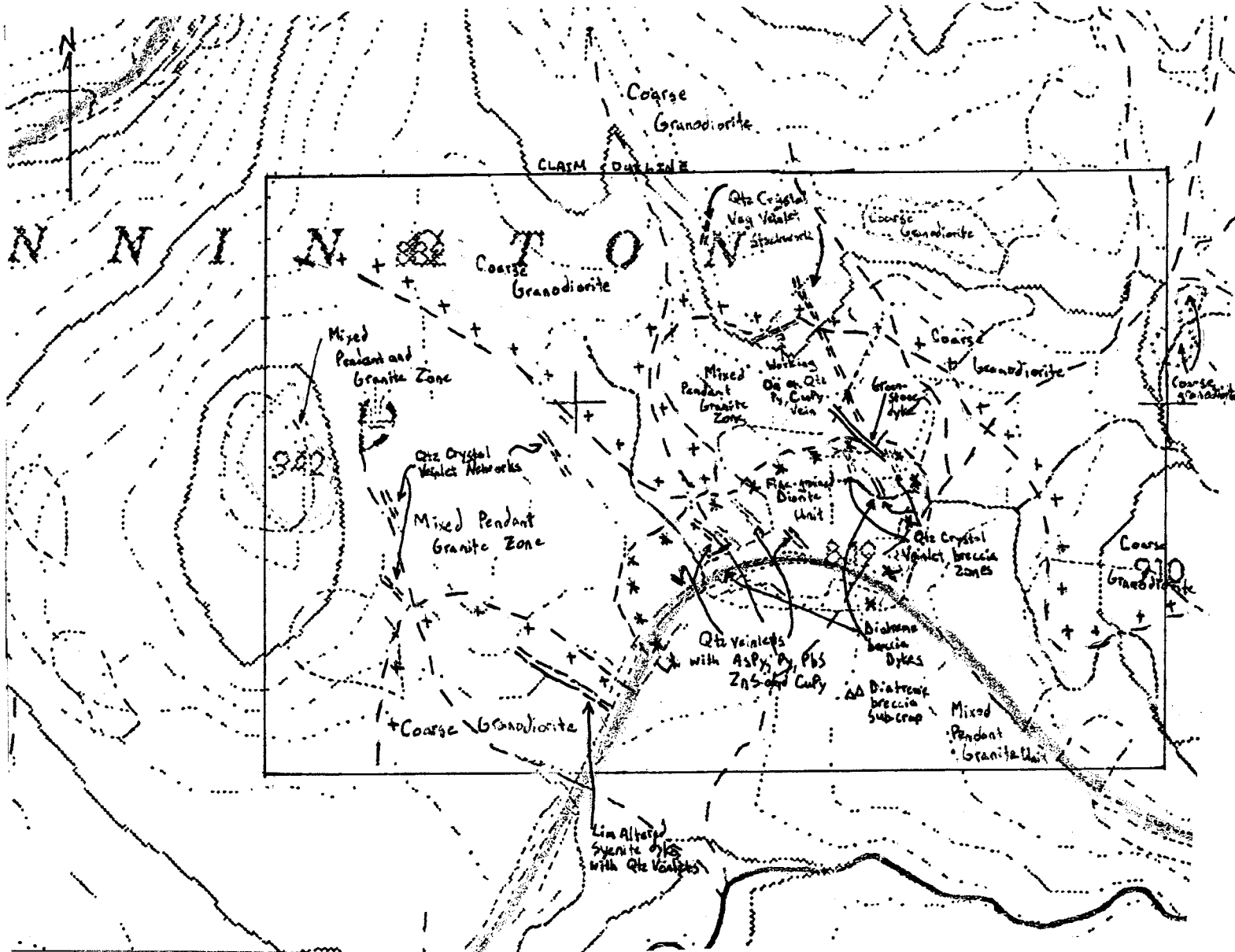


Figure 4. PROSPECTING MAP

Legend

- - Contacts
- + + - Coarse Granodiorite
- * * - Finegrained Diorite
- - Pit

Scale 1:10,000 0m 100m 200m 300m 400m

3.00 PROSPECTING

Prospecting on the champ claims has uncovered a large area of quartz crystal veining with carbonate and limonite/pyrite mineralization hosted within a sequence of granodiorite and volcanic/sedimentary rocks. This style of veining and alteration occurs throughout the claim group and with zones ranging in width from a few centimeters to over 1 metre and trends generally NNW with steep dips.

In two areas on the property quartz veining with semi-massive pyrite, and arsenopyrite as well as associated lead, zinc and copper mineralization were encountered. The first area consists of a series of narrow (1 to 5cm in width) en-echelon fracture controlled quartz veins hosted primarily within a fine-grained diorite unit and a mixed unit of sedimentary/volcanic pendants and intrusive rocks. Disseminated pyrite, arsenopyrite and limonite as well as, sericite alteration is common along the vein margins with pyrite, arsenopyrite, galena, sphalerite, and chalcopyrite noted in the quartz veins. The veins generally trend to the northwest at 140 degrees with steep dips to the NE and were found roughly in across a 300m by 100m wide area (refer to Fig.3).

The second area of quartz veining occurs along the north central side of the property where a 1-2m wide quartz shear zone is exposed in an old pit. This zone consists of milky white quartz with massive fine grained Py. Some copper staining and CuPy were also noted in the vein. The zone occurs along the contact of coarse grained biotite granite with volcano-sedimentary rocks and is associated with a mafic dyke. The strike of the zone is roughly 54 degrees and dipping 53 degrees to the NW.

Across the property numerous dykes of various compositions were encountered with the most interesting being diatreme like lamproid dykes with clasts of various lithologies and abundant disseminated pyrite. A limonite/pyrite altered syenite dyke was also encountered (refer to Fig.3). This dyke was cut by a number of sugary textured quartz crystal vug veins and hematite staining was common.

4.00 CONCLUSIONS and RECOMENDATIONS

The Prospecting program on the CHAMP property located two zones of potential economic interest hosted within an extensive zone of alteration. Follow up work consisting of geological mapping and soil sampling as well as some type of geophysics is warranted.

5.00 STATEMENT OF EXPENDITURES

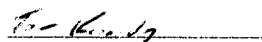
| | |
|---|------------------------|
| Prospecting Tom Kennedy 2 days @ 350.00/day (vehicle inclusive) - | \$700.00 |
| Report .5 day @ 250.00/day - | \$125.00 |
| <u>TOTAL COST</u> | <u>\$825.00</u> |

6.00 AUTHOR'S QUALIFICATIONS

As author of this report I, Tom Kennedy certify that:

- 1) I am an independent consulting prospector residing at 404 22nd Ave North, Cranbrook, B.C.
- 2) I have been actively involved in mining and mineral exploration for the past 15 years.
- 3) I have been employed by individuals, as well as Junior and Major mining companies.
- 4) I have created and optioned numerous grass-roots mineral exploration properties.

Tom Kennedy


Prospector

7.00 REFERENCES

Hoy, T. and Dunne (1998): Geological compilation of the Trail map-area, southeastern British Columbia; B.C. Ministry of Energy and Mines, Geoscience Map 1998-1.