

Prospecting -Geological
Geochemical Report
OM #512849
MINERAL MINING DIVISION.
Oct 5, 2005.

27937



TITLE OF REPORT [type of survey(s)] Prospecting-Geological-Geochemical	TOTAL COST 7324.00
---	-----------------------

AUTHOR(S) L.G. LeBlond SIGNATURE(S) L. G. LeBlond

NOTICE OF WORK PERMIT NUMBER(S)/DATE(S) SMI-05-1650287-0613 YEAR OF WORK 2005

STATEMENT OF WORK - CASH PAYMENT EVENT NUMBER(S)/DATE(S) 4049922-Sept 29/05, 4049924 Sept 29/05
+ 4051683

PROPERTY NAME 512849 OM
CLAIM NAME(S) (on which work was done) OM 2 West Cells

COMMODITIES SOUGHT Au-Ag-Cu-Pb-Zn-Mn

MINERAL INVENTORY MINFILE NUMBER(S), IF KNOWN _____

MINING DIVISION Omineca NTS 103I089

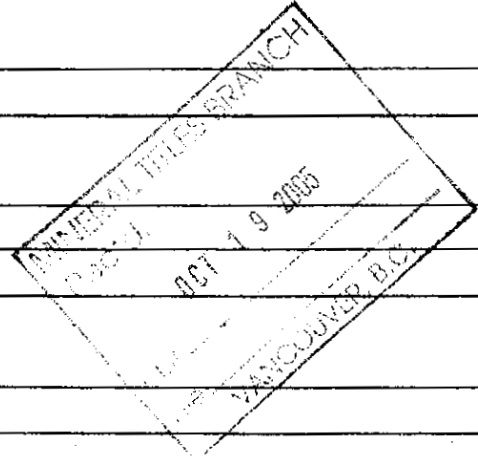
LATITUDE 54 ° 19 ' 2 " N LONGITUDE 128 ° 23 ' 38 " W (at centre of work)

OWNER(S)
1) Knauss Creek Mines Ltd 2) _____
201270

MAILING ADDRESS
Box 1205
Terrace, B.C.
V8G 5P7

OPERATOR(S) (who paid for the work)
1) Knauss Creek Mines Ltd 2) _____
Box 1205

MAILING ADDRESS
Box 1205
Terrace, B.C. V8g 5P7



PROPERTY GEOLOGY KEYWORDS (lithology, age, stratigraphy, structure, alteration, mineralization, size and attitude):
Hazelton Group Rocks-Jurassic Age-Coast Range Intrusives.
Shales/Diorite/Felspar Porphyries Quartz Veins-Scorodite-Calcite
with Graphite-Chalcopyrite-Malacite, Sphalerite-Biotite Carbonate Int.
On going project.

REFERENCES TO PREVIOUS ASSESSMENT WORK AND ASSESSMENT REPORT NUMBERS Prospecting Report-Kandy 1-6
#3220188, Dec 20, 2004

INTRODUCTION

A. Geographic and Physiographic Position

The OM #512849 property consists of five (5) cells totalling 93.20 hectares (ha) and is located between Saturn 3 property (aka: Brentford property) to the North with Dorreen Gold Mines (aka: Snowball #504021 property) to the West, see Map #2, Map Center 128 degrees 23 minutes 32 seconds West, 54 degrees, 48 minutes, 59.6 seconds North. All are located in the Knauss Creek basin which is tributary to Fiddler Creek. Fiddler Creek flows East into the Skeena River, with this confluence being approximately 45 km North of Terrace, B.C.

B. Property Owner

The OM #512849 property consists of five (5) cells with a total of 93.20 ha are owned by Knauss Creek Mines Ltd (210270) Box 1205 Terrace, B.C. V8G 5P7. Prospector and president is L.G. LeBlond of Terrace, B.C. author of this report.

C. Entrance to Claims and Dates Worked

Work started May 27, 2005 and stopped September 4, 2005.

- 25 days at camp.
- Worked 21 days @ 10 hours/day @ \$30.00 per hour.
- 4 days to make, dismantle and clean up campsite total 25 days
- work stopped due to road repairs

Entrance was gained via West Fiddler Creek logging road, 20 km North of Terrace, BC on Highway 16 East. Follow the logging road for 21 km to Br 300 sign and park vehicle. The Doreen Gold Mine road is about 20 metres (m) from the sign. Walk West for 1,500m. Road washed out and overgrown for first 500m, a further 1,000m in reasonable shape, then road was abandoned due to large windfalls and bush. New trail located 20m West (down-slope) and flagged for 500m, follow flagging upslope and East to mudslide, cross and follow trail cut and flagged, across mill creek. Mill creek bridge washed away. Follow road/trail a further 50m to the main base station (MBS) for this work. The Doreen Gold Mine mill is located 60m to the West. The road continues to the next creek. No ATV trails available. Roads cut to 2m and trails to 1m.

GPS not available due to heavy tree cover and steep rock face to Mt. Knauss 1,890m, and mill at 610m. Satellites not available for reading. Tent camp made 60m East of MBS.

27.957
-1-

D. History of Area

The OM claims were once part of the Doreen Gold Mine Property. The Mine closed down in 1952. On OM claims at 600m ASL East side of Knauss Creek was the Mine mill, fed by a overhead tramway from the Mine on the West side of the creek at about 792m ASL. All now dismantled and buildings collapsed. See Photo #2.

The history of the Doreen Gold Mine can be found in Min of Mines Mem 329.1964 pages 90-92.

AHH Reports Min of Mines BC

1916 Pages 101-104.

1925. P 131

1937 Pages 41-44

1949 P 94

1950 P 81

1952 P 82 Geol Surv. Canada. MEM 212.

E. Geology

Rocks are of the Hazelton Group of Jurassic Age – mostly Shales, Coast Range Intrusive – Qtz Diorite, Felspar Porphyries, Quartz Veins/Veinlets – Calcite in places with graphitic alteration, minerals seen in place, quartz calcite, graphite, scorodite.

Minerals seen in float malachite, chalcopryite and sphalerite/graphite.

F. Structure

A main fault strikes about North at approximate elevation of 610m and about 30m of face exposed to the West in places. This fault has exposed on the contact, Quartz vein with Scorodite. OM 1 sample taken, estimate width 2m, area too steep without climbing gear. Further 100m North it can be seen on the side of the creek with Quartz stringers/veinlets/graphite was observed.

In this creek – Mill Creek – are four (4) waterfalls about 7m high, step faulted with Qtz veins top & bottom of each waterfall. See Photo's 4,5,6 & 7.

G. Object of Work

See prospecting report on Kandy 1-6 Group #3220188, Dec 20, 2004.

To extend and pick up the batholithic biotite carbonate intrusive striking North from 1036m elevation and parallel about 100m to the West a Diorite dyke. Due to East-West faulting this has moved these dykes West?

H. Prospecting

Trails were cut to (60cm) South of Mill Creek to No Name Creek (Map #3). South of No Name Creek (1) was mostly a jungle of alder-devils club and small berry bushes on the top of talus mostly from a glacier to the South. The creeks flowing West into Knauss Creek are steep sided, once in a creek it is extremely difficult to get out without a rope. The main trails are marked on Map #3. Float was found in creek South of Mill Creek, as this was NorthWest of Intrusive above and on Kandy 2 claim it is not marked on Map 3, washed down from that area.

Area South of Mill Creek and next creek South was more interesting. This area uplifted 30m. Float not carried down by creeks. From Kandy 1&2 claims. Mill site is below Doreen Gold Mine. Adit on West side of Knauss Creek and the mill site and West of Mill road polluted from the Mine work area.

The area East of Mill Road and between the 2 creeks and up to fault escarpment were prospected for minerals, in place and float as marked on Map #3. This was considered the main area of interest. Float found on ridges (30m to creeks) and up to rock exposure (very steep) and marked on Map #3. Quartz outcrop with Scorodite – Sphalerite – Chalcopryrite and very vuggy Quartz well oxydized. OM 1 sample taken. Need rope to secure a more thorough investigation, in this area and on sides of Mill creek, East and up from Mill road float found:

Felspar Porphyry (1cm pink crystal) / Fine grained Felspar Porphyry / Black / Felsite / Green Quartz with Sphalerite / Quartz with Chalcopryrite – Malachite / Biotite Carbonate Intrusive / Calcite / Graphite / Iron Sulphide – not magnetic / Black Vuggy ? Quartz Crystals.

Shale – Slate / Clay and Mud / Conglomerate.

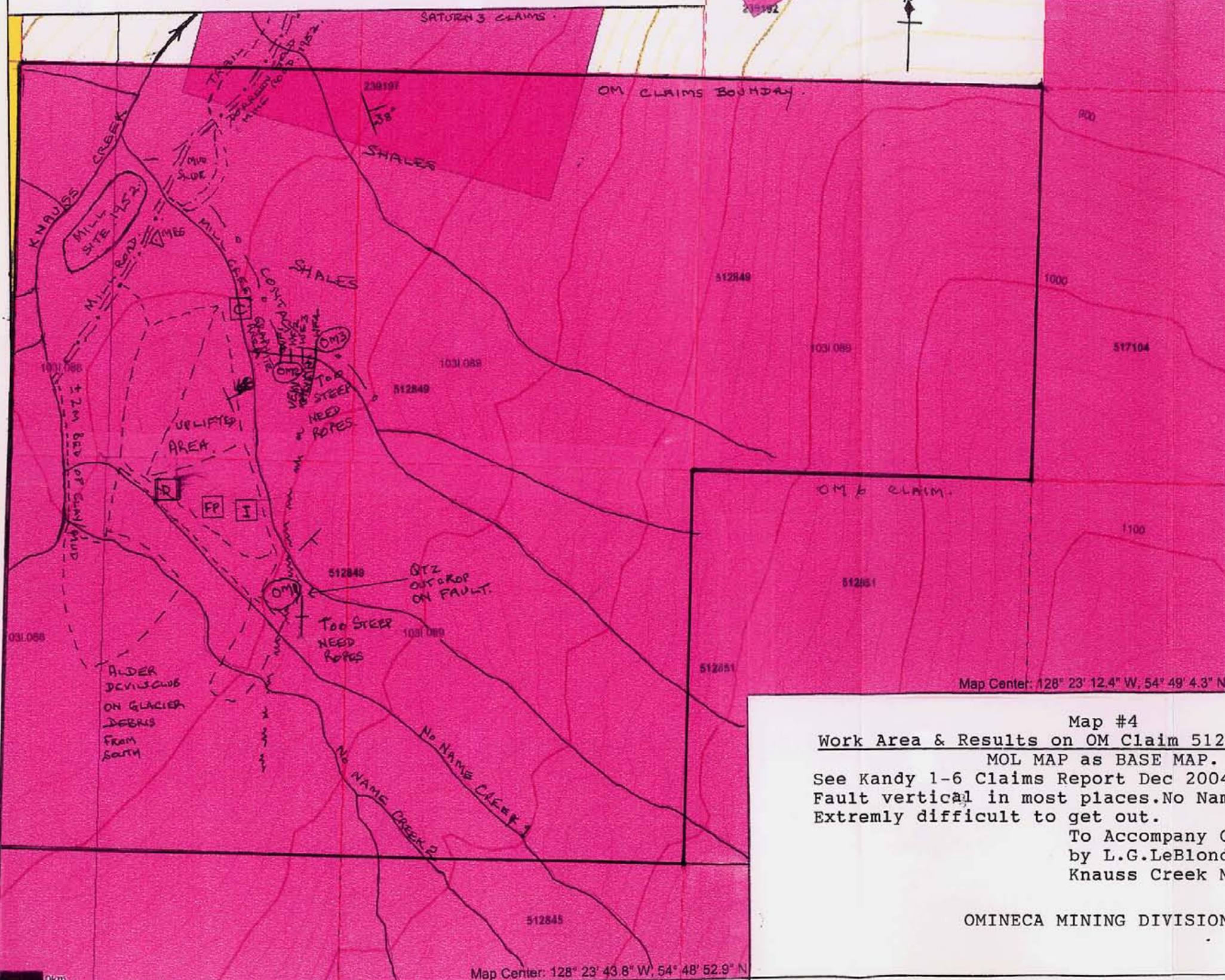
Areas on side of Mill Creek show crush zones, Mill Creek ends on Steep 85-90 degree rockfall – not safe to climb.

Samples/Rocks are noted to be finer grained and more oxydized than Kandy 1&2 Rocks at 1036m elevation.

I. Photo Section

See next page

Map created Tue Oct 04 19:53:03 PDT 2005



Legend

- △ MAIN BASE STATION
- == ROAD 2M
- - - TRAIL/TRAVERSE
- + + + ROCK CONTACT
- m m m FAULT
- w/f WATERFALL 1-2
- ↑ 68° + STRIKE DIB/VERTICAL
- SAMPLE STATIONS
- FLUAT STATIONS
- D DIORITE
- I CARBONATE INTRUSIVE
- Q QUARTZ-CHALCOPYRITE
- FP FELSIC PORPHYRY
- C CALCITE
- G GRAPHITE

Scale: 1:5,000

DO NOT USE FOR NAVIGATION

Map #4
Work Area & Results on OM Claim 512849, June 2005.

MOL MAP as BASE MAP.

See Kandy 1-6 Claims Report Dec 2004, #27676.
 Fault vertical in most places. No Name Creek 1&2, once in
 Extremely difficult to get out.

To Accompany OM, #512869 June, 2005
 by L.G. LeBlond Prospector. K
 Knauss Creek Mines Ltd.

OMINECA MINING DIVISION.

Map Center: 128° 23' 43.8" W, 54° 48' 52.9" N

- Photo #1 "OM" Tent Camp
- Photo #2 Doreen Gold Mine Mill
 Closed down in 1952
 Shows drive wheel – half buried in ground.
 #512849 "OM" Claim, June 2005.
- Photo #3 "OM" Claim on Mill Creek
 Fault on right of photo
 Float – Shale and Argillite
- Photo #4 West side of Mill Creek
 Shows Quartz and Calcite Vein and gash veins intruding thru
 argillite – graphite area with shale on top
- Photo #5 On top of #3 waterfall looking down. Quartz Veins / Gash Veins, top
 and bottom.
 Mill Creek
- Photo #6 At bottom of #4 waterfall on Mill Creek looking East
 Quartz Veins intruded thru shale (shattered) right of photo.
- Photo #7 Top of #4 waterfall in Mill Creek looking down waterfall.

Photo's by L.G. LeBlond ✍
 June 2005



OM TENT CAMP 2005

Photo 1

OM-Tent Camp, 2005



DORREEN GOLD MINE
CLOSED 1952
OM CLAIM
2005

Photo 2

Dorreen Gold Mine Mill Site Closed in 1952.



Photo 3
Mill Creek

Photo 4
Below,
OM Claim.





Photo 5
On Top of #3 Waterfall on Mill Creek

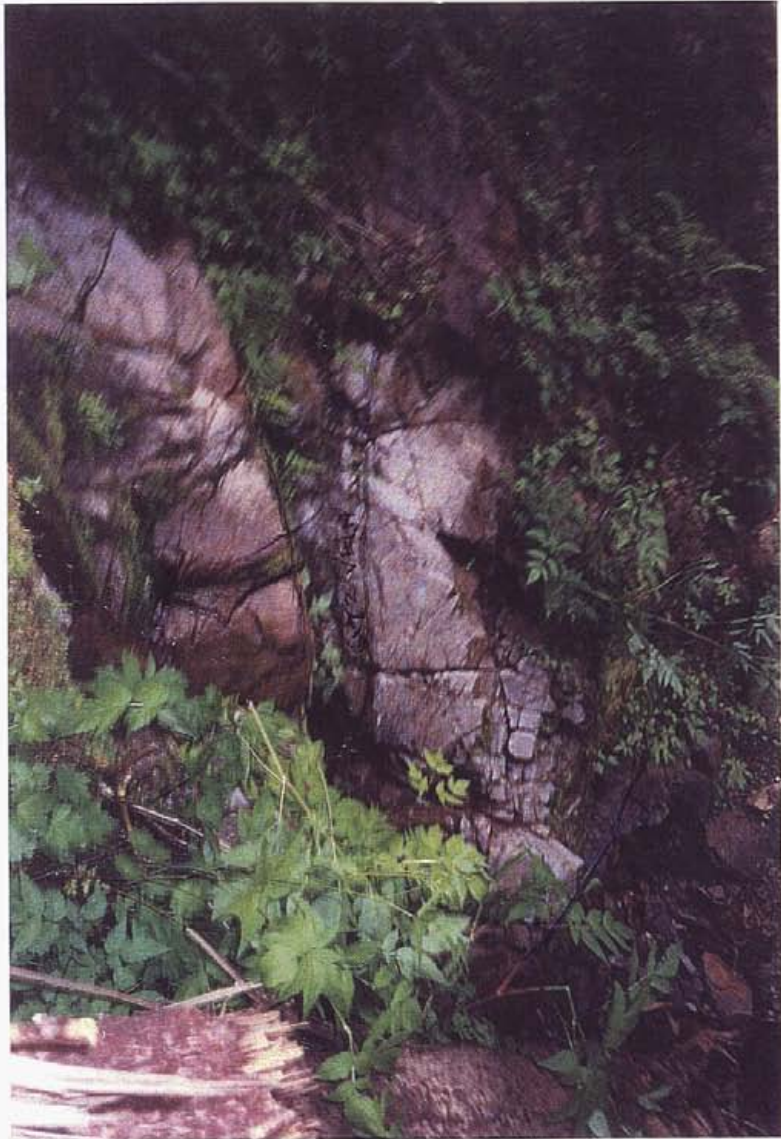


Photo 6
#4 Waterfall on Mill Creek



Photo 7
Top of #4 Waterfall on Mill Creek



Vancouver, B.C.
 V5X 4R6
 Tel: (604) 327-3436
 Fax: (604) 327-3423

Quality Assaying for over 25 Years

Geochemical Analysis Certificate

5V-0863-RG1

Sep-21-05

Company: **Knauss Creek Mines Ltd.**
 Project: Saturn 3, OM.
 Attn: Leon LeBlond

We hereby certify the following geochemical analysis of 4 rock samples submitted Sep-16-05

Sample Name	Au PPB	Ag PPM	Cu PPM	Mn PPM	Pb PPM	Zn PPM
S 627	46	32.1	1600		1205	5350
OM 1	1	0.4	81	172	23	332
OM 2	30	0.2	20	87	9	15
OM 3	1	0.2	9	844	19	43
*97-45	1430					
*LKSD-2		0.7	37	1880	46	192
*BLANK	<1	<0.1	<1	<5	<1	<1

Certified by

K. Road

We had to leave area to pick up food supply from a contact at Br 300 advised to leave. Road unsafe for travel. Not repaired till August 29, 2005. Work abandoned on OM to concentrate on Snowball property, South of OM.

L. Conclusion

OM 1 Assay indicates Sphalerite and copper. To be followed up ASAP. 35m rope required.

M. Recommendations

More prospecting required above and East of fault.

N. Credits

BC Gov Memoirs Listed Under History Text

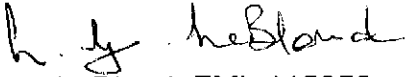
Horwell, Denis, P. Geo. Retired.
Mine Geologist for Doreen Gold Mine 1951.

Meredith, Roderick B. RPF
Report Typist

O. Vitae

L.G. LeBlond

Completed Gov Mineral Exploration course at Cowichan, BC 1984.
Prospecting for 42 years.


L.G. LeBlond. FML 115352
Prospector


October 5, 2005

P. Cost of Work

May 27, 2005 to September 5, 2005

Road / Line cutting 4 km and layout area. Prospecting.
Assays / Technical Mapping – Geological Mapping.
Geochemical / Photography / Report Writing

1 Man	25 Days. 4 Days M&M 21 Days Work 210 hours @ \$30.00/hour	\$6,300
Food	1 Man for 25 Days @ \$25.00 per day	\$ 625
Travel		\$ 150
Assays		\$ 143
Office Expense		\$ 125
<u>Report</u>		<u>\$ 250</u>
Total		\$7,593



L.G. LeBlond, Prospector
FML 115352

Work carried out by L.G. LeBlond, Prospector.
Work paid for by Knass Creek Mines Ltd (201270).
October 5, 2005