

**Rimfire Minerals Corporation  
Northgate Minerals Corporation**

**2005 GEOLOGICAL, GEOCHEMICAL  
AND DIAMOND DRILLING REPORT  
ON THE RDN CLAIMS**

**Volume II - Figures**

Located in the Eskay Creek Area  
Liard Mining Division  
NTS 104B/15E, 104G/2E  
57° 00 North Latitude  
130° 39' West Longitude

-prepared for-

**RIMFIRE MINERALS CORPORATION**  
Suite 700, 700 West Pender Street  
Vancouver, B.C., Canada  
V6C 1G8

**NORTHGATE MINERALS CORPORATION**  
404 - 815 Hornby Street  
Vancouver, B.C., Canada  
V6Z 2E6

-prepared by-

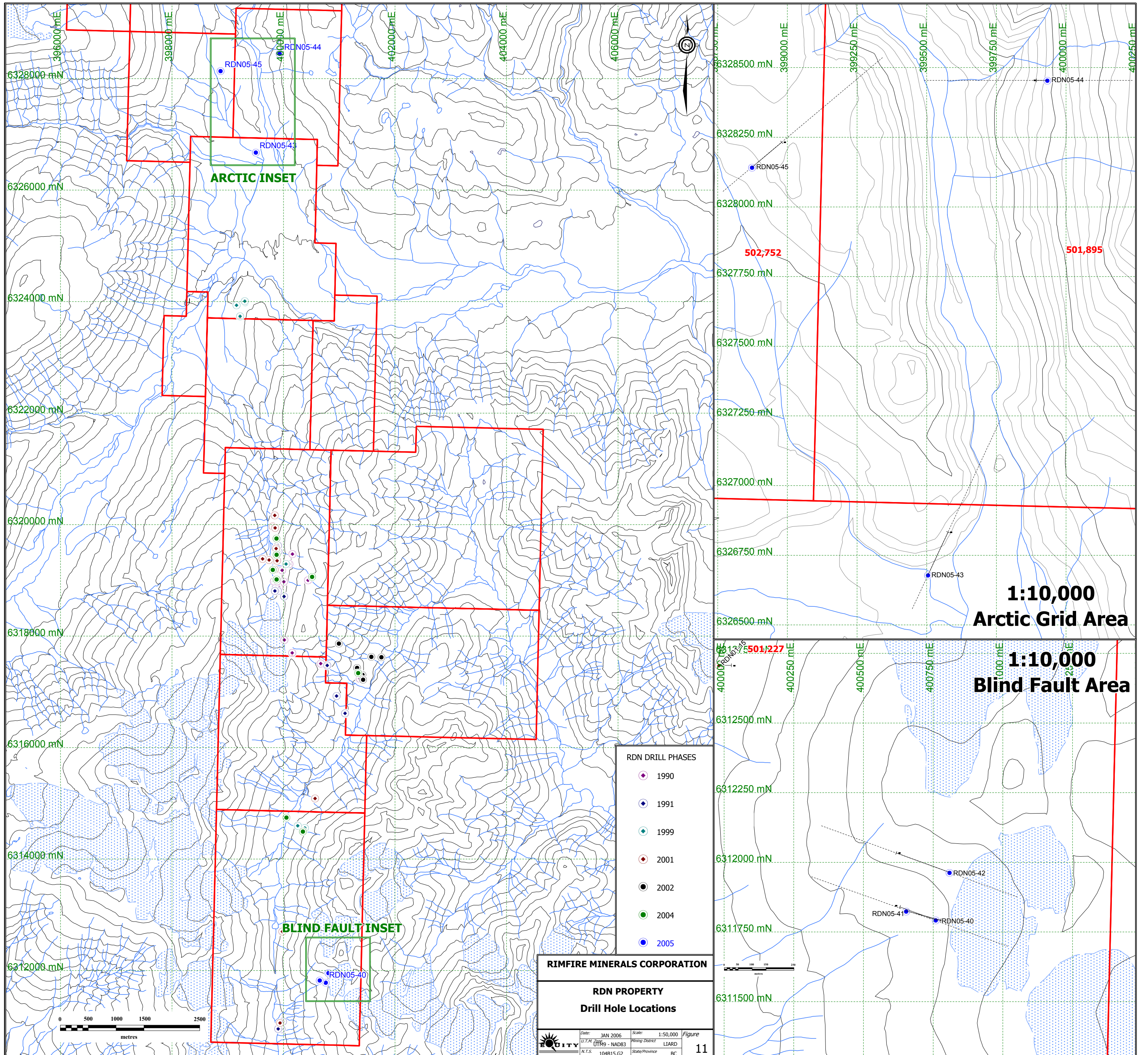
Murray I. Jones, M.Sc., P.Geo.  
Michael D. Roberts, Ph.D.  
**EQUITY ENGINEERING LTD.**  
Suite 700, 700 West Pender Street  
Vancouver, B.C., Canada V6C 1G8

January 2006









**ARCTIC INSET**

**BLIND FAULT INSET**

**1:10,000  
Arctic Grid Area**

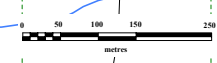
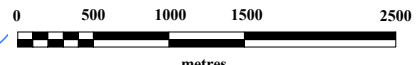
**1:10,000  
Blind Fault Area**

- RDN DRILL PHASES**
- 1990
  - 1991
  - 1999
  - 2001
  - 2002
  - 2004
  - 2005

**RIMFIRE MINERALS CORPORATION**

**RDN PROPERTY  
Drill Hole Locations**

Date: JAN 2006 Scale: 1:50,000 Figure  
 U.T.M. Zone 11N9 - NAD83 Mining District LIARD  
 N.T.S. 104B15,G2 State/Province BC 11





**LITHOLOGIES**

ANDS	Andesite	DIOR	Diorite
DACT	Dacite	HFPO	Feldspar Hornblende Porphyry
ARGL	Argillite	HFPO	Feldspar Hornblende Porphyry
CHRT	Chert	FGHP	Feldspar Quartz Hornblende Porphyry
CNGL	Conglomerate	FGPO	Feldspar Quartz Porphyry
GRIT	Grit	FFPO	Feldspar Porphyry
GRWK	Greywacke	GRDR	Granodiorite
MDST	Mudstone	GRNT	Granite
SHAL	Shale	PHYL	Phyllite
SLTS	Siltstone	SGHS	Schist
SNDS	Sandstone	SLAT	Slate
MAFC	Mafic Volcanic	INTM	Intermediate Volcanic
TRAC	Trachyte	GABR	Gabbro
BSLT	Basalt	LMST	Limestone
RHYL	Rhyolite	QRZT	Quartzite
DLMT	Dolomite		

**MINERAL AND ALTERATION ABBREVIATIONS**

AK	ankerite	HZ	hydrozincite
AS	arsenopyrite	JA	jarosite
AZ	azurite	KF	K-spar
BA	barite	MC	malachite
BI	biotite	MG	magnetite
BX	breccia	MN	manganese
CA	calcite	MO	molybdenite
CD	chalcedony	MS	sericite
CB	Fe-carbonate	MT	marcasite
CL	chlorite	MU	muscovite
CP	chalcocopyrite	PA	pyrrhotite
CY	clay	PO	pyrite
DI	diopside	PX	pyroxene
EP	epidote	PY	Pyrite
FP	feldspars	QV	quartz vein
GC	glauconite	QZ	quartz
GE	goethite	SI	silica
GL	galena	SP	sphalerite
HB	hornblende	SR	scorodite
HE	hematite	SS	Sulphosalts
HF	hornfels	TT	Tetrahedrite

**MODIFIERS**

/	interbedded	hf	hornfels
ag	agglomerate	la	laminated
ar	argillaceous	li	lithic tuff
at	ash tuff	lt	lapilli tuff
bd	bedded	ma	maroon
bl	black	md	medium
br	brown	mg	medium-grained
bx	breccia	mx	massive
ca	calcareous	ph	phyllitic
cg	coarse-grained	pk	poikilitic
cn	crenulated	pp	porphyritic
col	columnar	pw	pillowed
cr	carbonaceous	qe	quartz eye
ct	cherty	qz	quartz
dk	dark	sh	sheared
fb	flow-banded	si	siliceous
fg	fine-grained	sk	skarn
fi	fissile	ss	stickensides
fl	flow	stk	stockwork
fo	foliated	tf	tuff
fs	fossiliferous	vn	vein
gr	green	xt	crystal tuff
gs	gossan		
gy	grey		

**SYMBOLS & LINES**

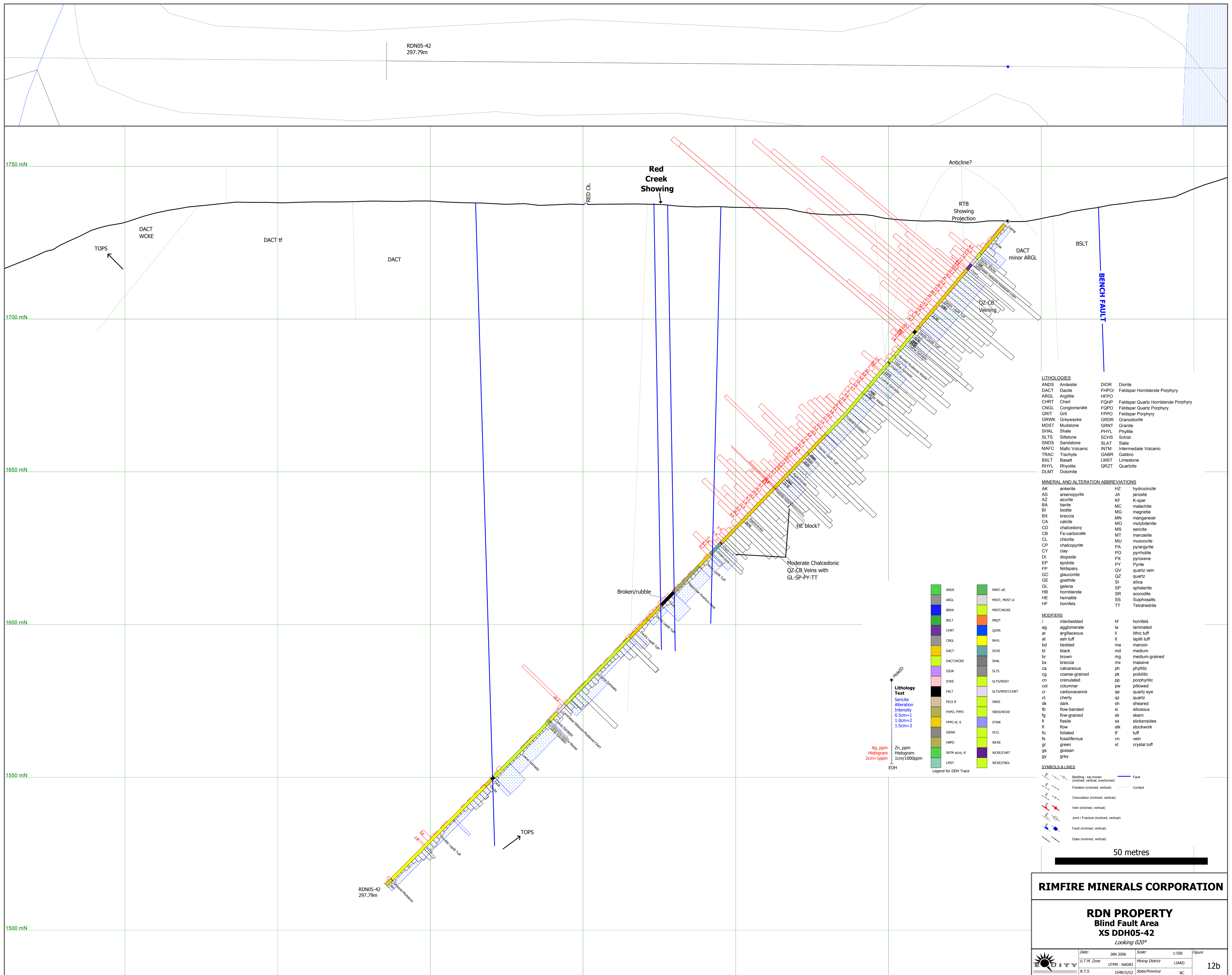
	Bedding - top known (inclined, vertical, overturned)		Fault
	Foliation (inclined, vertical)		Contact
	Crenulation (inclined, vertical)		
	Vein (inclined, vertical)		
	Joint / Fracture (inclined, vertical)		
	Fault (inclined, vertical)		
	Dyke (inclined, vertical)		



**RIMFIRE MINERALS CORPORATION**

**RDN PROPERTY  
Blind Fault Area  
XS DDH05-40, 41  
Looking 020°**

Date:	JAN 2006	Scale:	1:500	Figure	
U.T.M. Zone	UTM9 - NAD83	Mining District	LIARD		
N.T.S.	104815/G2	State/Province	BC		12a



**LITHOLOGIES**

ANDS	Andesite	DIOR	Diorite
DACT	Dacite	FHPO	Feldspar Hornblende Porphyry
ARGL	Argillite	FPPO	Feldspar Quartz Hornblende Porphyry
CHRT	Chert	FGPO	Feldspar Quartz Porphyry
CNGL	Conglomerate	FPPO	Feldspar Porphyry
GRIT	Grit	GRDR	Granodiorite
GRWK	Greywacke	GRNT	Granite
MDST	Mudstone	PHYL	Phyllite
SHAL	Shale	SCHS	Schist
SLTS	Siltstone	SLAT	Slate
SNDS	Sandstone	INTM	Intermediate Volcanic
MAFC	Mafic Volcanic	GABR	Gabbro
TRAC	Trachyte	LMST	Limestone
BSLT	Basalt	QRZT	Quartzite
RHYL	Rhyolite		
DLMT	Dolomite		

**MINERAL AND ALTERATION ABBREVIATIONS**

AK	ankerite	HZ	hydrozincite
AS	arsenopyrite	JA	jarosite
AZ	azurite	KF	K-spar
BA	barite	MC	malachite
BI	biotite	MG	magnetite
BK	breccia	MN	manganese
CA	calcite	MO	molybdenite
CD	chalcedony	MS	sericite
CB	Fe-carbonate	MT	marcasite
CL	chlorite	MU	muscovite
CP	chalcopryite	PA	pyrrhotite
CY	clay	PO	pyrite
DI	diopside	PX	pyroxene
EP	epidote	PY	Pyrite
FP	feldspars	QV	quartz vein
GC	glaucophane	QZ	quartz
GE	goethite	SI	silica
GL	galena	SP	sphalerite
HB	hornblende	SR	scorodite
HE	hematite	SS	Sulphosalts
HF	hornfels	TT	Tetrahedrite

**MODIFIERS**

/	interbedded	hf	hornfels
ag	agglomerate	la	laminated
ar	argillaceous	li	lithic tuff
at	ash tuff	lt	lappilite tuff
bd	bedded	ma	maroon
bl	black	md	medium
br	brown	mg	medium-grained
bx	breccia	mx	massive
ca	calcareous	ph	phyllitic
cg	coarse-grained	pk	poikilitic
cn	crenulated	pp	porphyritic
col	columnar	pw	pillowed
cr	carbonaceous	qz	quartz eye
ct	cherty	sk	skarn
dk	dark	sh	sheared
fb	flow-banded	si	siliceous
fg	fine-grained	sk	skarn
fi	fissile	ss	slickensides
fl	flow	stk	stockwork
fo	foliated	tf	tuff
fs	fossiliferous	vn	vein
gr	green	xt	crystal tuff
gs	gossan		
gy	grey		

**SYMBOLS & LINES**

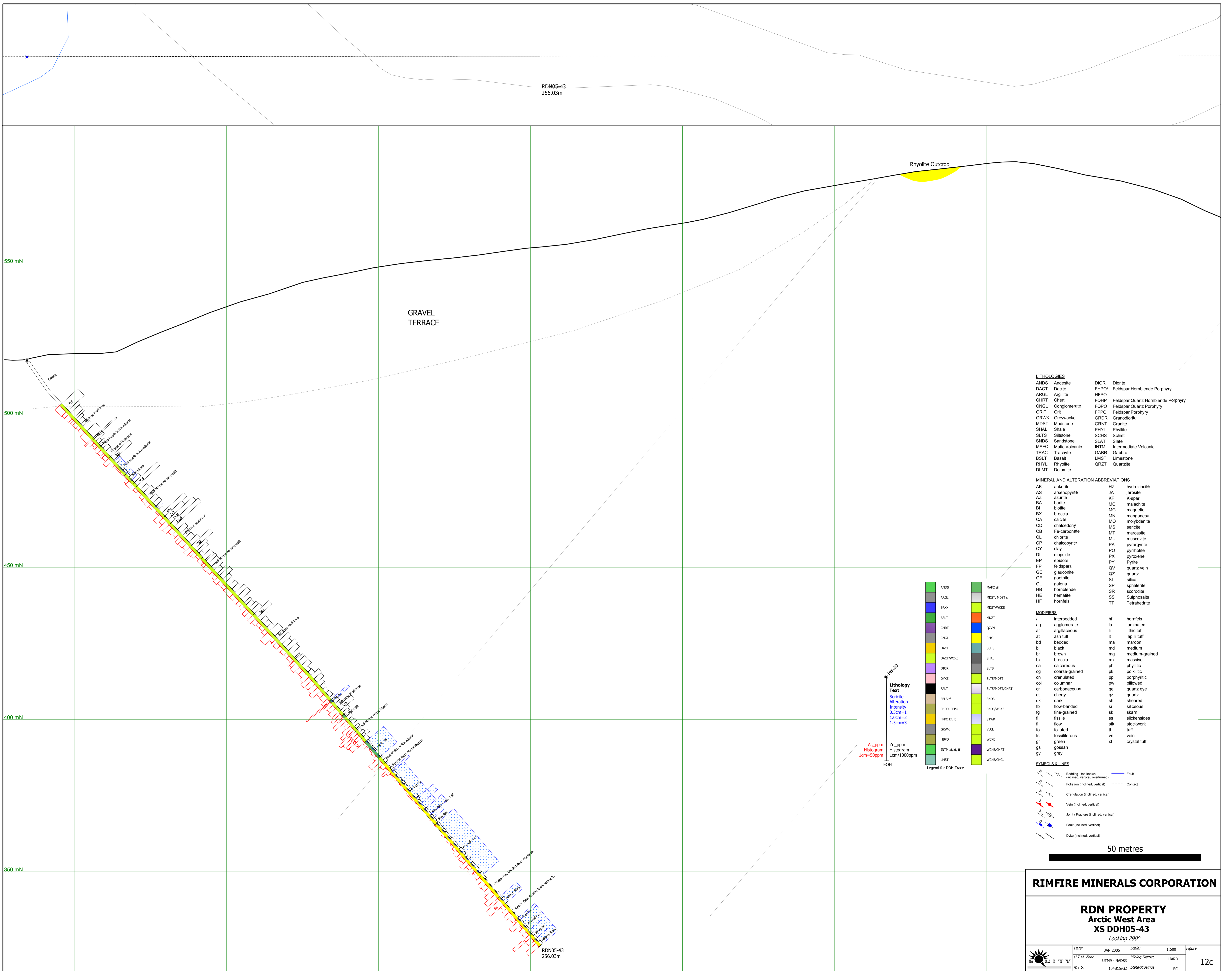
	Bedding, top known (inclined, vertical, overturned)		Fault
	Foliation (inclined, vertical)		Contact
	Crenulation (inclined, vertical)		
	Vein (inclined, vertical)		
	Joint / Fracture (inclined, vertical)		
	Fault (inclined, vertical)		
	Dyke (inclined, vertical)		

50 metres

**RIMFIRE MINERALS CORPORATION**

**RDN PROPERTY  
Blind Fault Area  
XS DDH05-42**  
Looking 020°

Date:	JAN 2006	Scale:	1:500	Figure	
U.T.M. Zone	UTM9 - NAD83	Mining District	LIARD		12b
N.T.S.	104815/G2	State/Province	BC		



**LITHOLOGIES**

ANDS	Andesite	DIOR	Diorite
DACT	Dacite	FHPO	Feldspar Hornblende Porphyry
ARGL	Argillite	HFPO	Feldspar Quartz Hornblende Porphyry
CHRT	Chert	FGQP	Feldspar Quartz Porphyry
CNGL	Conglomerate	FPPO	Feldspar Porphyry
GRIT	Grit	GRDR	Granodiorite
GRWK	Greywacke	GRNT	Granite
MDST	Mudstone	PHYL	Phyllite
SHAL	Shale	SCHS	Schist
SLTS	Siltstone	SLAT	Slate
SNDS	Sandstone	INTM	Intermediate Volcanic
MAFC	Mafic Volcanic	GABR	Gabbro
TRAC	Trachyte	LMST	Limestone
BSLT	Basalt	QRZT	Quartzite
RHYL	Rhyolite		
DLMT	Dolomite		

**MINERAL AND ALTERATION ABBREVIATIONS**

AK	ankerite	HZ	hydrozincite
AS	arsenopyrite	JA	jarosite
AZ	azurite	KF	K-spar
BA	barite	MC	malachite
BI	biotite	MG	magnetite
BX	breccia	MN	manganese
CA	calcite	MO	molybdenite
CD	chalcedony	MS	sericite
CB	Fe-carbonate	MT	marcasite
CL	chlorite	MU	muscovite
CP	chalcoppyrite	PA	pyrrhotite
CY	clay	PO	pyrite
DI	diopside	PX	pyroxene
EP	epidote	PY	Pyrite
FP	feldspars	QV	quartz vein
GC	glauconite	QZ	quartz
GE	goethite	SI	silica
GL	galena	SP	sphalerite
HB	hornblende	SR	scorodite
HE	hematite	SS	Sulphosalts
HF	hornfels	TT	Tetrahedrite

**MODIFIERS**

/	interbedded	hf	hornfels
ag	agglomerate	la	laminated
ar	argillaceous	li	lithic tuff
at	ash tuff	ll	lapilli tuff
bd	bedded	ma	maroon
bl	black	md	medium
br	brown	mg	medium-grained
bx	breccia	mx	massive
ca	calcareous	ph	phyllitic
cg	coarse-grained	pk	poikilitic
cn	crenulated	pp	porphyritic
col	columnar	pw	pillowed
cr	carbonaceous	qe	quartz eye
ct	cherty	qz	quartz
dk	dark	sh	sheared
fb	flow-banded	si	siliceous
fg	fine-grained	sk	skarn
fi	fissile	ss	stickensides
fl	flow	stk	stockwork
fo	foliated	tf	tuff
fs	fossiliferous	vn	vein
gr	green	xt	crystal tuff
gs	gossan		
gy	grey		

**SYMBOLS & LINES**

	Bedding - top known (inclined, vertical, overturned)		Fault
	Foliation (inclined, vertical)		Contact
	Crenulation (inclined, vertical)		
	Vein (inclined, vertical)		
	Joint / Fracture (inclined, vertical)		
	Fault / Fracture (inclined, vertical)		
	Dike (inclined, vertical)		

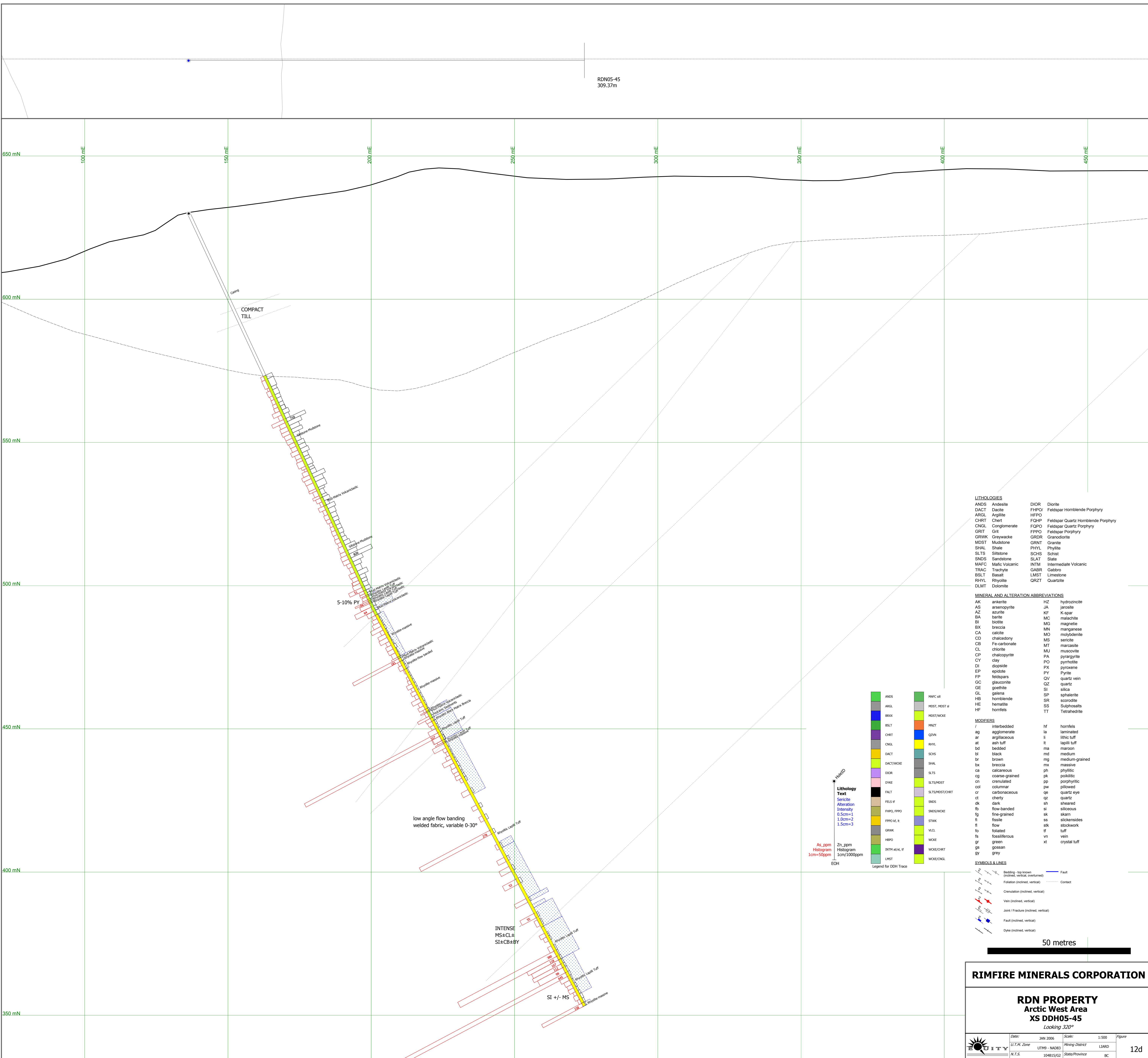
50 metres

**RIMFIRE MINERALS CORPORATION**

**RDN PROPERTY**  
**Arctic West Area**  
**XS DDH05-43**  
*Looking 290°*

Date:	JAN 2006	Scale:	1:500	Figure	
U.T.M. Zone	UTM9 - NAD83	Mining District	LIARD		
N.T.S.	104815/G2	State/Province	BC		12c





**LITHOLOGIES**

ANDS	Andesite	DIOR	Diorite
DACT	Dacite	FHPO	Feldspar Homblende Porphyry
ARGL	Argillite	HFPO	Feldspar Quartz Homblende Porphyry
CHRT	Chert	FQHP	Feldspar Quartz Porphyry
CNGL	Conglomerate	FFPO	Feldspar Porphyry
GRIT	Grit	GRDR	Granodiorite
GRWK	Greywacke	GRNT	Granite
MDST	Mudstone	PHYL	Phyllite
SHAL	Shale	SCHS	Schist
SLTS	Siltstone	SLAT	Slate
SNDS	Sandstone	INTM	Intermediate Volcanic
MARC	Mafic Volcanic	GABR	Gabbro
TRAC	Trachyte	LMST	Limestone
BSLT	Basalt	QRZT	Quartzite
RHYL	Rhyolite		
DLMT	Dolomite		

**MINERAL AND ALTERATION ABBREVIATIONS**

AK	ankerite	HZ	hydrozincite
AS	arsenopyrite	JA	jarosite
AZ	azurite	KF	K-spar
BA	barite	MC	malachite
BI	biotite	MG	magnetite
BX	breccia	MN	manganese
CA	calcite	MO	molybdenite
CD	chalcocite	MS	sericite
CB	Fe-carbonate	MT	marcasite
CL	chlorite	MU	muscovite
CP	chloropyrite	PA	pyrrhotite
CY	clay	PD	pyroxene
DI	diopside	PX	pyrite
EP	epidote	PY	Pyrite
FP	feldspars	QV	quartz vein
GC	glaucophane	QZ	quartz
GE	goethite	SI	silica
GL	galena	SP	sphalerite
HA	hematite	SR	siderite
HE	hematite	SS	Sulphosalts
HF	hornfels	TT	Tetrahedrite

**Lithology Text**

**Sericite Alteration Intensity**  
 0.5cm=1  
 1.0cm=2  
 1.5cm=3

**As ppm Histogram**  
 1cm=50ppm

**Zn ppm Histogram**  
 1cm/1000ppm

**Legend for DDH Trace**

ANDS	MARC
ARGL	MDST, MDST #
BRXX	MDSTWOKE
CHRT	PHNT
CNGL	QDNM
DACT	RHYL
DACTWOKE	SCHS
DIOR	SHAL
DWE	SLTS
FALT	SLTS, MDST
FELS #	SLTS, MDST, CHRT
FPO, FPPO	SNDS
FPO #, t	SNDSWOKE
GRWK	STWK
HRPO	V.L.C.
INTR # & L #	WOKE
LMST	WOKE, CHRT
	WOKE, CNGL

**MODIFIERS**

/	interbedded	lf	hornfels
ag	agglomerate	la	laminated
arg	argillaceous	li	lithic tuff
at	ash tuff	lt	lapilli tuff
bd	bedded	ma	maroon
bl	black	md	medium
br	brown	mg	medium-grained
bx	breccia	mx	massive
ca	calcareous	ph	phyllitic
cg	coarse-grained	pk	poikilitic
cn	crenulated	pp	porphyritic
col	columnar	pw	pillowed
ct	carbonaceous	qe	quartz eye
ct	cherty	qz	quartz
dk	dark	sh	sheared
fb	flow-banded	sl	siliceous
fg	fine-grained	sk	skarn
fi	fissile	ss	slickensides
fl	flow	stk	stockwork
fo	foolited	tf	tuff
fs	fossiliferous	vn	vein
gr	green	xt	crystal tuff
gs	gossian		
gy	grey		

**SYMBOLS & LINES**

	Bedding - top known (inclined, vertical, overhand)		Fault
	Foliation (inclined, vertical)		Contact
	Crenulation (inclined, vertical)		
	Vein (inclined, vertical)		
	Joint / Fracture (inclined, vertical)		
	Fault (inclined, vertical)		
	Dike (inclined, vertical)		

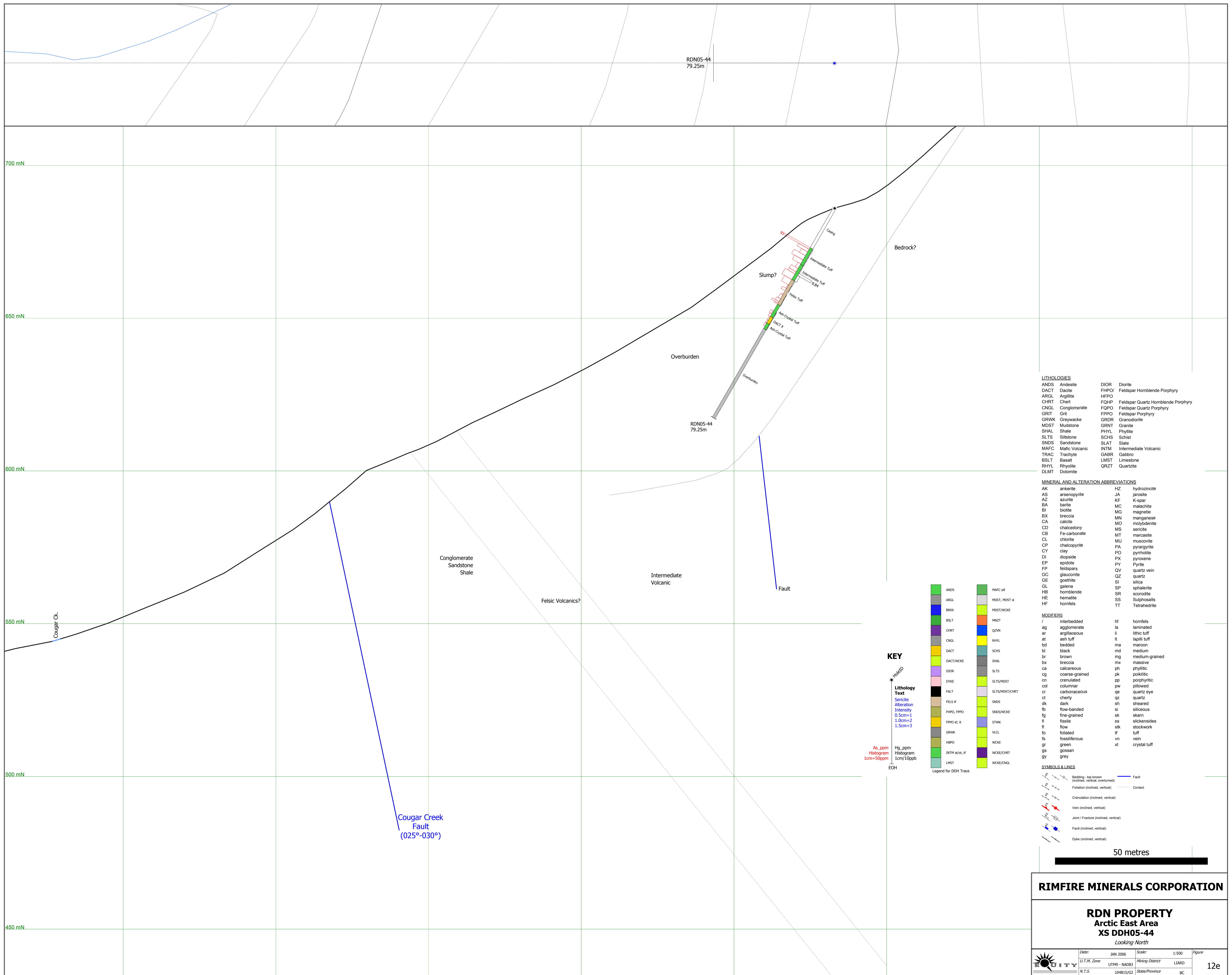
50 metres

**RIMFIRE MINERALS CORPORATION**

**RDN PROPERTY**  
 Arctic West Area  
 XS DDH05-45  
 Looking 320°

Date: JAN 2006 Scale: 1:500 Figure  
 U.T.M. Zone: UTM9 - NAD83 Mining District: LILARD  
 N.T.S. 104815/G2 State/Province: BC

12d



**LITHOLOGIES**

ANDS	Andesite	DIOR	Diorite
DACT	Dacite	FHPO	Feldspar Hornblende Porphyry
ARGL	Argillite	HFPO	Feldspar Hornblende Porphyry
CHRT	Chert	FGQP	Feldspar Quartz Hornblende Porphyry
CNGL	Conglomerate	FGPO	Feldspar Quartz Porphyry
GRIT	Grit	FPPO	Feldspar Porphyry
GRWK	Greywacke	GRDR	Granodiorite
MDST	Mudstone	GRNT	Granite
SHAL	Shale	PHYL	Phyllite
SLTS	Siltstone	SGHS	Schist
SNDS	Sandstone	SLAT	Slate
MAFC	Mafic Volcanic	INTM	Intermediate Volcanic
TRAC	Trachyte	GABR	Gabbro
BSLT	Basalt	LMST	Limestone
RHYL	Rhyolite	QRZT	Quartzite
DLMT	Dolomite		

**MINERAL AND ALTERATION ABBREVIATIONS**

AK	ankerite	HZ	hydrozincite
AS	arsenopyrite	JA	jarosite
AZ	azurite	KF	K-spar
BA	barite	MC	malachite
BI	biotite	MG	magnetite
BX	breccia	MN	manganese
CA	calcite	MO	molybdenite
CD	chalcodony	MS	sericite
CB	Fe-carbonate	MT	marcasite
CL	chlorite	MU	muscovite
CP	chalcopyrite	PA	pyrrhotite
CY	clay	PO	pyrite
DI	diopside	PX	pyroxene
EP	epidote	PY	Pyrite
FP	feldspars	QZ	quartz
GC	glaucophane	QV	quartz vein
GE	goethite	SI	silica
GL	galena	SP	sphalerite
HB	hornblende	SR	scorodite
HE	hematite	SS	Sulphosalts
HF	hornfels	TT	Tetrahedrite

**MODIFIERS**

/	interbedded	hf	hornfels
ag	agglomerate	la	laminated
ar	argillaceous	li	lithic tuff
at	ash tuff	lt	lapilli tuff
bd	bedded	ma	maroon
bl	black	md	medium
br	brown	mg	medium-grained
bx	breccia	mx	massive
ca	calcareous	ph	phyllitic
cg	coarse-grained	pk	poikilitic
cn	crenulated	pp	porphyritic
col	columnar	pw	pillowed
cr	carbonaceous	qe	quartz eye
ct	cherty	qz	quartz
dk	dark	sh	sheared
fb	flow-banded	si	siliceous
fg	fine-grained	sk	skarn
fi	fissile	ss	sicken-sides
fl	flow	stk	stockwork
fo	foliated	tf	tuff
fs	fossiliferous	vt	vein
gr	green	xn	crystal tuff
gs	gossan		
gy	grey		

**SYMBOLS & LINES**

	Bedding - top known (inclined, vertical, overturned)		Fault
	Foliation (inclined, vertical)		Contact
	Crenulation (inclined, vertical)		
	Vein (inclined, vertical)		
	Joint / Fracture (inclined, vertical)		
	Fault (inclined, vertical)		
	Dike (inclined, vertical)		



**KEY**

Well ID

**Lithology Text**

Sericite  
Alteration  
Intensity  
0.5cm=1  
1.0cm=2  
1.5cm=3

As\_ppm Histogram  
1cm=50ppm

Hg\_ppm Histogram  
1cm=10ppb

ECH

Legend for DDH Trace

**RIMFIRE MINERALS CORPORATION**

**RDN PROPERTY**  
Arctic East Area  
**XS DDH05-44**  
Looking North

Date:	JAN 2006	Scale:	1:500	Figure	
U.T.M. Zone	UTM9 - NAD83	Mining District	LIARD		
N.T.S.	104815/G2	State/Province	BC		12e

























