

**2004 GEOLOGICAL and GEOCHEMICAL REPORT
ON THE KIZMET, LJ, SUTLAHINE, EMU, LAW,
BS-J, TUNJONY, AND PLUM, PROPERTIES**

VOLUME 3 – MAPS

Located in the Sutlahine River Area,
Atlin Mining Division
British Columbia, Canada

NTS: 104K-07E, 104K-08E
104K-10E, 104K-11E,
and 104K-14E

058° 35' north Latitude
132° 85' west Longitude

Owned By:

Barrick Gold Incorporated
&
Rimfire Minerals Corporation

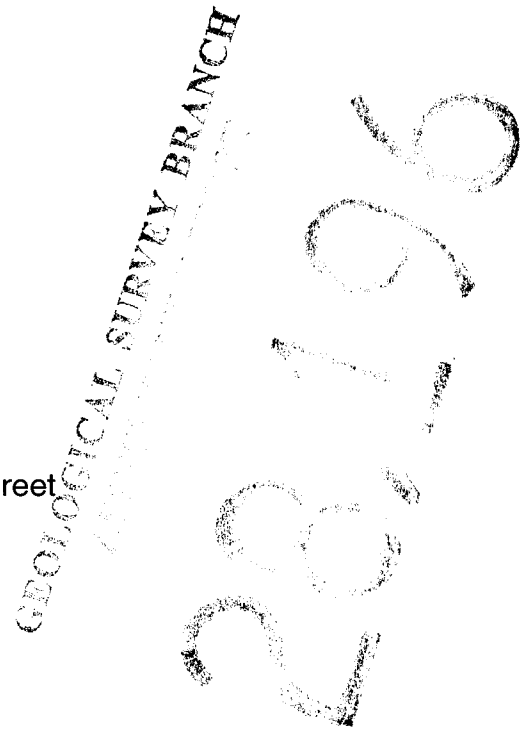
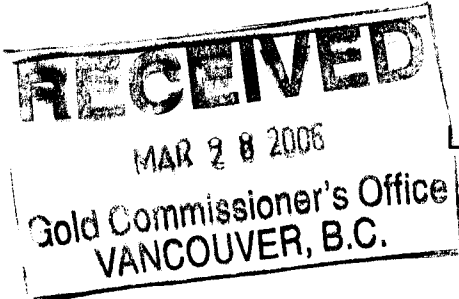
Work Performed By:

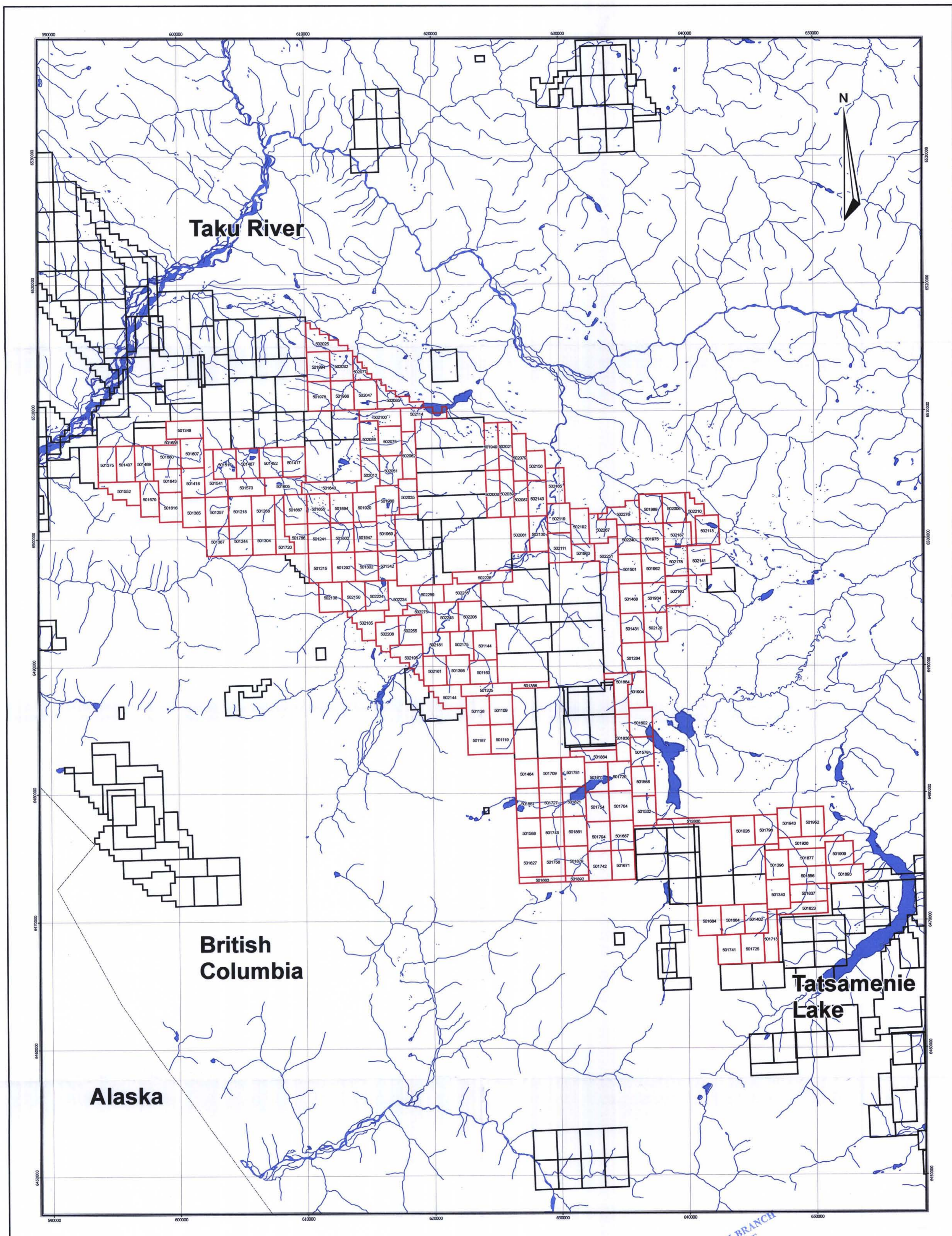
Barrick Gold Inc
Suite 700, 1055 West Georgia Street
P.O. Box 11120
Vancouver, BC
V6E 3P3

Submitted by

Richard K. Mann, B.Sc, GIT.
Adrian C. Newton, B.Sc

March 24th, 2006





Legend

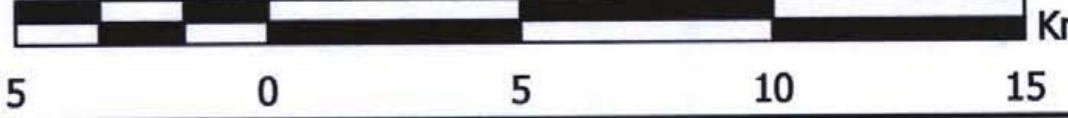
-  Rivers and Creeks
-  Lakes
-  Kizmet Project Mineral Titles
-  BC Mineral Titles, Nov 23, 2005

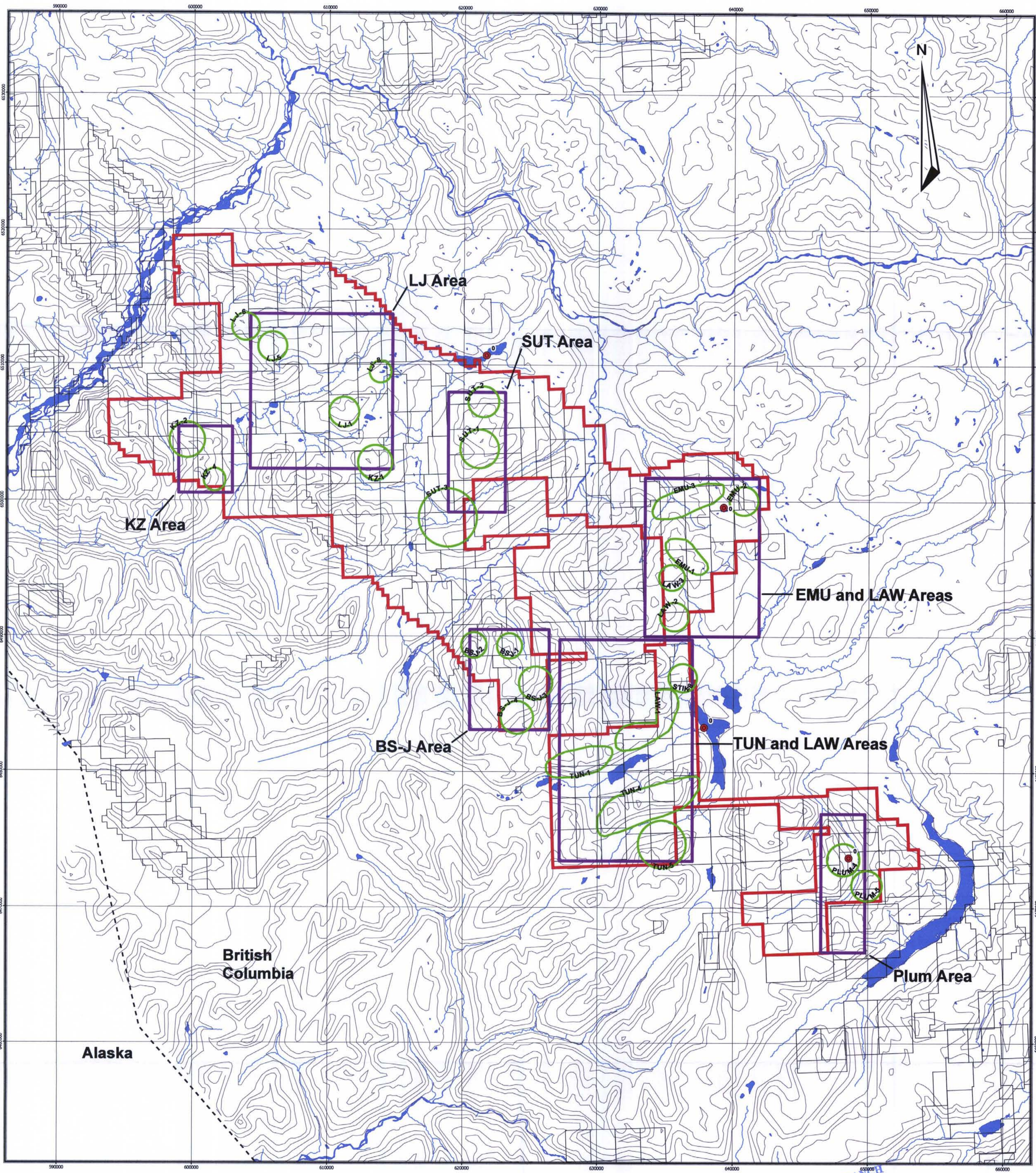
Located in:



Barrick Gold Corporation

**Kizmet Project
Mineral Tenure**

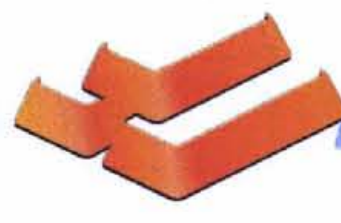
| | |
|----------------------|---|
| Author: ACN | Map No. 1 |
| Date: March 21, 2006 | Projection: UTM NAD 83, Zone 8 |
| Project: Kizmet | NTS: 104K |
| Scale: 1:150,000 |  |



Legend

- 2005 Camp Locations
- Contours
- 2005 Target Outlines
- Rivers and Creeks
- ▭ 2005 Kizmet Report Regions
- ▭ Lakes
- ▭ Kizmet Project Outline
- ▭ BC Mineral Titles, Nov 23, 2005

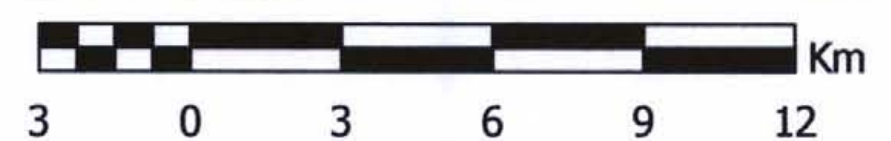
Located in:

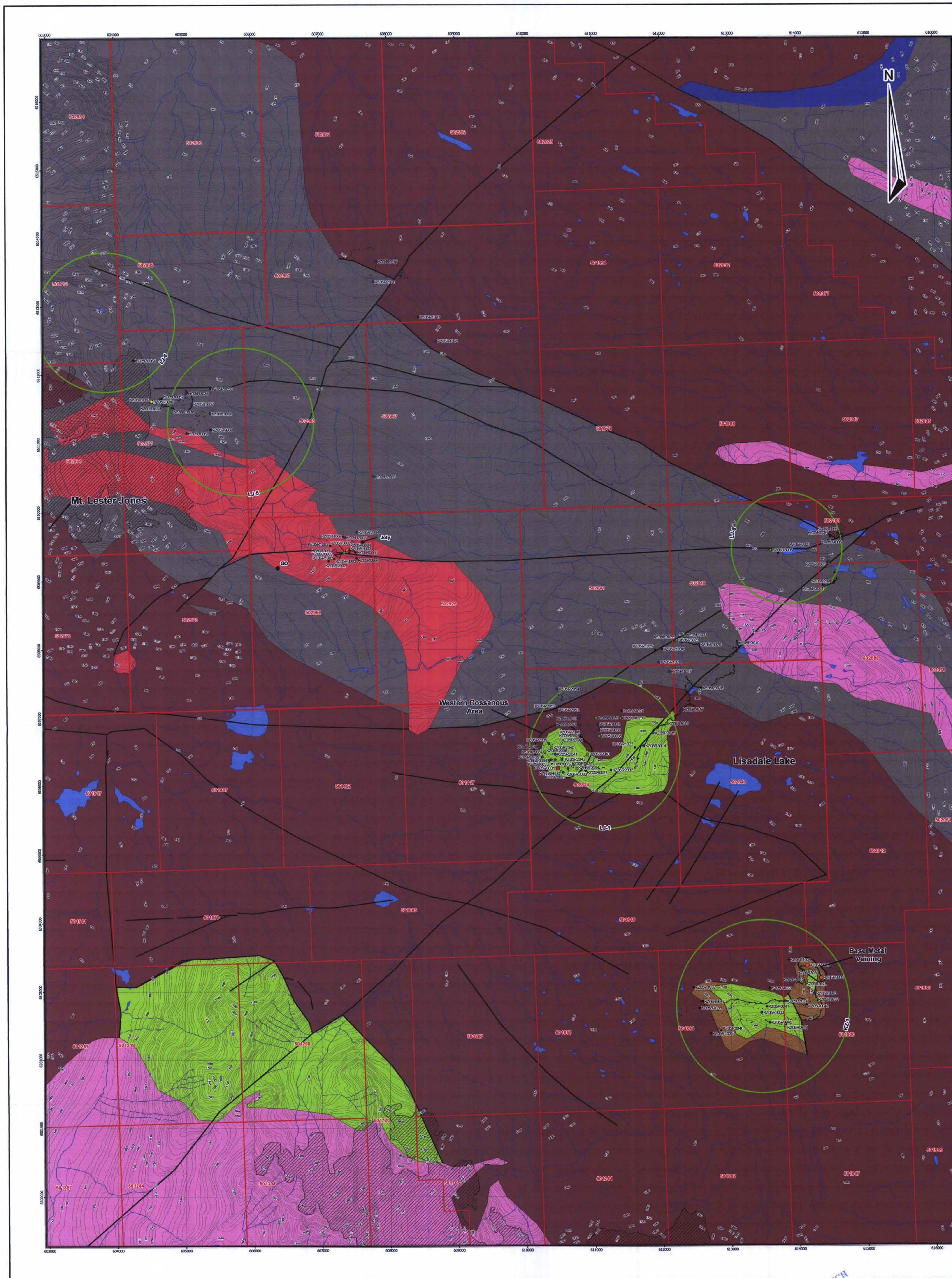


**Barrick Gold Corporation
Target Overview Map
Report Map Outlines**

| | |
|----------------------|--------------------------------|
| Author: ACN | Map No. 2 |
| Date: March 22, 2006 | Projection: UTM NAD 83, Zone 8 |
| Project: Kizmet | NTS: 104K |

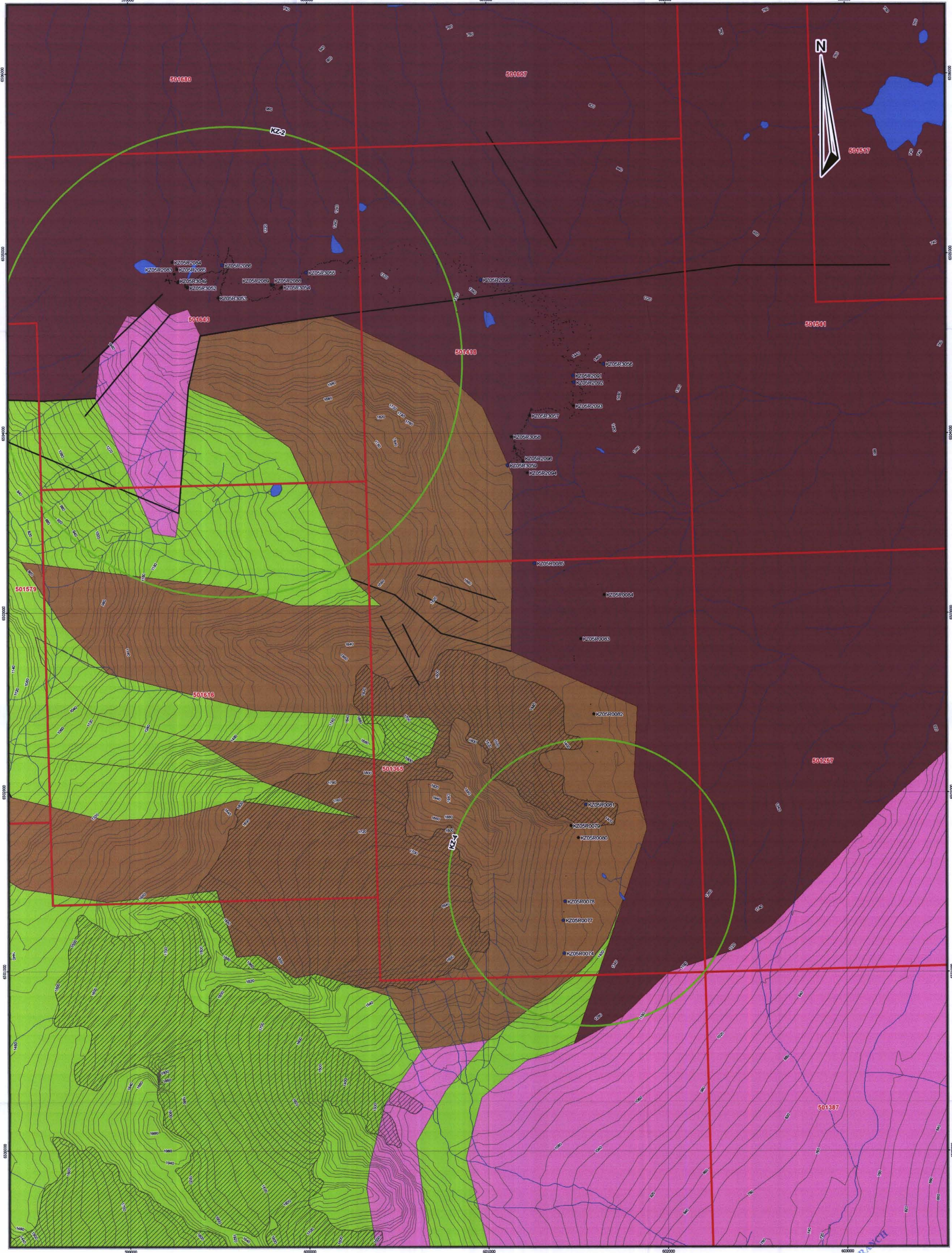
Scale: 1:150,000





| Sample Number | Sample Type | Au (ppm) | Ag (ppm) | Pb (ppm) | Zn (ppm) | Cu (ppm) | As (ppm) | Hg (ppm) | Sb (ppm) |
|---------------|-------------|----------|----------|----------|----------|----------|----------|----------|----------|
| KZ05R002 | GRAB | 0.064 | 2.7 | 222 | 45 | 30 | 790 | 0.12 | 182 |
| KZ05R003 | GRAB | 0.0005 | 0.1 | 9 | 61 | 9 | 19 | 0.01 | 4 |
| KZ05R004 | GRAB | 0.0005 | 0.1 | 10 | 38 | 13 | 60 | 0.005 | 3 |
| KZ05R005 | GRAB | 0.0005 | 0.4 | 16 | 68 | 94 | 44 | 0.005 | 4 |
| KZ05R006 | FLOAT | 0.0005 | 0.1 | 14 | 13 | 3 | 3 | 0.4 | 1 |
| KZ05R007 | GRAB | 0.0005 | 0.1 | 4 | 42 | 34 | 4 | 0.1 | 1 |
| KZ05R008 | GRAB | 0.0005 | 0.1 | 4 | 42 | 34 | 4 | 0.1 | 1 |
| KZ05R009 | FLOAT | 0.0005 | 0.7 | 284 | 513 | 42 | 11 | 0.46 | 1 |
| KZ05R010 | GRAB | 0.0005 | 0.2 | 15 | 85 | 91 | 27 | 0.01 | 1 |
| KZ05R011 | FLOAT | 0.011 | 0.1 | 23 | 29 | 22 | 120 | 0.02 | 1 |
| KZ05R012 | FLOAT | 0.002 | 0.1 | 20 | 74 | 16 | 6 | 0.01 | 3 |
| KZ05R013 | GRAB | 0.005 | 0.3 | 31 | 41 | 46 | 150 | 0.01 | 1 |
| KZ05R014 | FLOAT | 0.001 | 0.1 | 11 | 43 | 22 | 4 | 0.11 | 1 |
| KZ05R015 | FLOAT | 0.018 | 0.2 | 18 | 33 | 7 | 28 | 0.005 | 1 |
| KZ05R016 | FLOAT | 0.003 | 0.1 | 5 | 54 | 47 | 6 | 0.02 | 1 |
| KZ05R017 | FLOAT | 0.01 | 0.2 | 7 | 73 | 52 | 13 | 0.03 | 1 |
| KZ05R018 | FLOAT | 0.012 | 0.1 | 36 | 64 | 64 | 23 | 0.02 | 5 |
| KZ05R019 | FLOAT | 0.017 | 0.4 | 28 | 15 | 12 | 11 | 0.01 | 1 |
| KZ05R020 | GRAB | 0.0005 | 0.1 | 7 | 122 | 64 | 24 | 0.02 | 1 |
| KZ05R021 | GRAB | 0.0005 | 0.1 | 5 | 76 | 44 | 8 | 0.01 | 1 |
| KZ05R022 | FLOAT | 0.003 | 0.8 | 91 | 773 | 18 | 22 | 0.06 | 6 |
| KZ05R023 | GRAB | 0.0005 | 0.1 | 7 | 122 | 64 | 24 | 0.02 | 1 |
| KZ05R024 | GRAB | 0.0005 | 0.1 | 16 | 55 | 80 | 16 | 0.05 | 1 |
| KZ05R025 | GRAB | 0.0005 | 0.1 | 14 | 52 | 4 | 6 | 0.03 | 2 |
| KZ05R026 | GRAB | 0.0005 | 0.1 | 17 | 115 | 45 | 32 | 0.05 | 1 |
| KZ05R027 | GRAB | 0.0005 | 0.1 | 3 | 66 | 35 | 33 | 0.01 | 1 |
| KZ05R028 | FLOAT | 0.001 | 0.1 | 1 | 64 | 127 | 9 | 0.02 | 1 |
| KZ05R029 | GRAB | 0.0005 | 0.1 | 2 | 95 | 69 | 5 | 0.05 | 1 |
| KZ05R030 | GRAB | 0.0005 | 0.1 | 5 | 79 | 7 | 4 | 0.04 | 1 |
| KZ05R031 | FLOAT | 0.0005 | 0.1 | 10 | 55 | 110 | 3 | 0.04 | 1 |
| KZ05R032 | FLOAT | 0.0005 | 0.3 | 22 | 137 | 76 | 42 | 0.005 | 1 |
| KZ05R033 | FLOAT | 0.0005 | 0.4 | 16 | 37 | 32 | 94 | 0.005 | 13 |
| KZ05R034 | GRAB | 0.0005 | 0.1 | 6 | 68 | 3 | 1 | 0.01 | 1 |
| KZ05R035 | GRAB | 0.0005 | 0.1 | 17 | 16 | 3 | 1 | 0.01 | 3 |
| KZ05R036 | GRAB | 0.002 | 0.1 | 7 | 105 | 44 | 11 | 0.05 | 1 |
| KZ05R037 | GRAB | 0.008 | 0.1 | 15 | 83 | 36 | 14 | 0.02 | 1 |
| KZ05R038 | GRAB | 0.033 | 0.2 | 21 | 74 | 35 | 9 | 0.01 | 4 |
| KZ05R039 | FLOAT | 0.0005 | 0.2 | 3 | 14 | 6 | 3 | 0.005 | 1 |
| KZ05R040 | GRAB | 0.001 | 0.1 | 7 | 8 | 80 | 2 | 0.01 | 2 |
| KZ05R041 | GRAB | 0.001 | 0.1 | 5 | 81 | 60 | 1 | 0.01 | 2 |
| KZ05R042 | FLOAT | 0.0005 | 0.2 | 22 | 231 | 4 | 1 | 0.01 | 1 |
| KZ05R043 | GRAB | 0.0005 | 0.2 | 18 | 9 | 9 | 80 | 0.01 | 2 |
| KZ05R044 | FLOAT | 0.038 | 1.3 | 500 | 220 | 44 | 43 | 5.79 | 4 |
| KZ05R045 | GRAB | 0.0005 | 0.1 | 13 | 111 | 40 | 6 | 0.02 | 1 |
| KZ05R046 | GRAB | 0.0005 | 0.1 | 33 | 1195 | 21 | 16 | 0.02 | 8 |
| KZ05R047 | GRAB | 0.0005 | 0.1 | 8 | 35 | 10 | 1 | 0.01 | 1 |
| KZ05R048 | GRAB | 0.0005 | 0.1 | 17 | 66 | 15 | 9 | 0.03 | 1 |
| KZ05R049 | FLOAT | 0.0005 | 0.2 | 33 | 84 | 22 | 25 | 0.01 | 1 |
| KZ05R050 | GRAB | 0.003 | 0.3 | 6 | 84 | 80 | 4 | 0.01 | 1 |
| KZ05R051 | GRAB | 0.0005 | 0.1 | 3 | 60 | 45 | 1 | 0.03 | 1 |
| KZ05R052 | GRAB | 0.0005 | 0.1 | 1 | 65 | 3 | 1 | 0.01 | 1 |
| KZ05R053 | GRAB | 0.006 | 0.2 | 19 | 33 | 24 | 19 | 0.01 | 2 |
| KZ05R054 | GRAB | 0.002 | 0.3 | 12 | 63 | 78 | 11 | 0.02 | 1 |
| KZ05R055 | GRAB | 0.003 | 0.8 | 15 | 15 | 365 | 19 | 0.01 | 1 |
| KZ05R056 | GRAB | 0.0005 | 0.2 | 16 | 67 | 10 | 1 | 0.07 | 1 |
| KZ05R057 | GRAB | 0.011 | 0.2 | 11 | 89 | 80 | 9 | 0.01 | 1 |
| KZ05R058 | GRAB | 0.0005 | 0.1 | 29 | 48 | 19 | 14 | 0.01 | 1 |
| KZ05R059 | GRAB | 0.006 | 0.1 | 46 | 28 | 4 | 61 | 0.01 | 1 |
| KZ05R060 | FLOAT | 0.022 | 0.3 | 44 | 6 | 4 | 89 | 0.01 | 1 |
| KZ05R061 | GRAB | 0.002 | 0.2 | 19 | 101 | 15 | 12 | 0.01 | 1 |
| KZ05R062 | GRAB | 0.005 | 0.4 | 28 | 55 | 21 | 32 | 0.01 | 1 |
| KZ05R063 | FLOAT | 0.019 | 0.8 | 230 | 239 | 73 | 128 | 0.06 | 6 |
| KZ05R064 | GRAB | 0.002 | 0.2 | 33 | 84 | 22 | 25 | 0.01 | 1 |
| KZ05R065 | FLOAT | 0.002 | 0.5 | 125 | 499 | 17 | 3 | 0.02 | 1 |
| KZ05R066 | GRAB | 0.015 | 0.4 | 58 | 81 | 33 | 5 | 0.01 | 1 |
| KZ05R067 | GRAB | 0.001 | 0.2 | 36 | 139 | 42 | 2 | 0.01 | 1 |
| KZ05R068 | GRAB | 0.001 | 0.1 | 19 | 42 | 18 | 5 | 0.01 | 1 |
| KZ05R069 | FLOAT | 0.013 | 0.3 | 10 | 42 | 111 | 13 | 0.005 | 1 |
| KZ05R070 | FLOAT | 0.016 | 0.2 | 9 | 35 | 503 | 13 | 0.005 | 1 |
| KZ05R071 | FLOAT | 0.005 | 0.1 | 6 | 43 | 44 | 5 | 0.005 | 1 |
| KZ05R072 | FLOAT | 0.01 | 0.3 | 6 | 28 | 155 | 5 | 0.005 | 1 |
| KZ05R073 | FLOAT | 0.009 | 0.1 | 7 | 40 | 97 | 13 | 0.005 | 1 |
| KZ05R074 | GRAB | 0.001 | 0.1 | 5 | 22 | 7 | 45 | 0.04 | 4 |
| KZ05R075 | GRAB | 0.002 | 0.1 | 3 | 5 | 1 | 24 | 0.05 | 1 |
| KZ05R076 | GRAB | 0.011 | 0.7 | 22 | 46 | 79 | 18 | 0.04 | 1 |
| KZ05R077 | GRAB | 0.001 | 0.1 | 21 | 46 | 19 | 1 | 0.01 | 1 |
| KZ05R078 | GRAB | 0.003 | 0.1 | 14 | 72 | 45 | 7 | 0.03 | 1 |
| KZ05R079 | GRAB | 0.044 | 0.3 | 14 | 68 | 7 | 276 | 0.01 | 1 |
| KZ05R080 | FLOAT | 0.307 | 0.6 | 32 | 68 | 6 | 6130 | 0.01 | 26 |
| KZ05R081 | FLOAT | 0.009 | 0.1 | 17 | 70 | 9 | 34 | 0.01 | 1 |
| KZ05R082 | GRAB | 0.025 | 0.6 | 10 | 97 | 80 | 216 | 0.21 | 1 |
| KZ05R083 | FLOAT | 0.003 | 0.1 | 4 | 40 | 2 | 15 | 0.01 | 1 |
| KZ05R084 | FLOAT | 0.003 | 0.1 | 29 | 4 | 8 | 14 | 0.01 | 1 |
| KZ05R085 | GRAB | 0.034 | 0.1 | 51 | 102 | 96 | 14 | 0.01 | 1 |
| KZ05R086 | GRAB | 0.005 | 0.1 | 9 | 67 | 19 | 25 | 0.05 | 1 |
| KZ05R087 | GRAB | 0.0005 | 0.1 | 6 | 24 | 12 | 19 | 0.44 | 1 |
| KZ05R088 | GRAB | 0.002 | 0.1 | 15 | 50 | 4 | 7 | 0.04 | 1 |
| KZ05R089 | GRAB | 0.001 | 0.1 | 3 | 38 | 190 | 8 | 0.01 | 1 |
| KZ05R090 | FLOAT | 0.015 | 0.1 | 860 | 726 | 38 | 34 | 3.58 | 3 |
| KZ05R091 | FLOAT | 0.024 | 0.8 | 158 | 115 | 32 | 42 | 0.8 | 1 |
| KZ05R092 | FLOAT | 0.009 | 0.8 | 38 | 32 | 21 | 159 | 0.06 | 1 |
| KZ05R093 | GRAB | 0.0005 | 0.1 | 17 | 48 | 11 | 28 | 0.02 | 1 |
| KZ05R094 | GRAB | 0.019 | 0.8 | 78 | 31 | 9 | 248 | 0.36 | 10 |
| KZ05R095 | FLOAT | 0.482 | 569 | 2000 | 13000 | 5560 | 5260 | 14.45 | 1145 |
| KZ05R096 | FLOAT | 1.45 | 2560 | 2270 | 740 | 3650 | 10000 | 3.12 | 4570 |
| KZ05R097 | FLOAT | 0.109 | 285 | 4000 | 899 | 1605 | 5650 | 0.59 | 437 |
| KZ05R098 | GRAB | 0.014 | 31.4 | 1240 | 419 | 69 | 639 | 0.21 | 39 |
| KZ05R099 | GRAB | 0.007 | 4.2 | 77 | 116 | 28 | 176 | 0.14 | 5 |
| KZ05R100 | FLOAT | 0.003 | 2.8 | 20 | 77 | 166 | 25 | 0.03 | 1 |
| KZ05R101 | FLOAT | 0.001 | 5.2 | 306 | 334 | 41 | 19 | 0.6 | 5 |
| KZ05R102 | FLOAT | 0.004 | 1.3 | 13 | 85 | 152 | 22 | 0.03 | 1 |
| KZ05R103 | GRAB | 0.004 | 1.1 | 12 | 43 | 45 | 60 | 0.01 | 1 |
| KZ05R104 | FLOAT | 0.092 | 11 | 1390 | 5860 | 120 | 10000 | 0.05 | 77 |

| Sample Number | Pima Alt 1 | Pima Alt 2 | Pima Alt 3 |
|---------------|------------|------------|------------|
| KZ05R002 | illite | | |
| KZ05R003 | illite | Smectite | |
| KZ05R004 | illite | | |
| KZ05R005 | Halloysite | Kaolinite | |
| KZ05R006 | illite | Quartz | Muscovite |
| KZ05R007 | illite | | |
| KZ05R008 | Chlorite | | |
| KZ05R009 | Smectite | | |
| KZ05R010 | NONE | Quartz | |
| KZ05R011 | Smectite | Quartz | |
| KZ05R012 | illite | Smectite | |
| KZ05R013 | NONE | illite | |
| KZ05R014 | Chlorite | Chlorite | |
| KZ05R015 | NONE | illite | |
| KZ05R016 | Chlorite | Quartz | |
| KZ05R017 | NONE | illite | |
| KZ05R018 | Chlorite | Quartz | |
| KZ05R019 | Chlorite | Quartz | |
| KZ05R020 | Muscovite | Quartz | |
| KZ05R021 | Episole | Quartz | |
| KZ05R022 | Smectite | Quartz | |
| KZ05R023 | Muscovite | Chlorite | |
| KZ05R024 | NONE | Quartz | |
| KZ05R025 | illite | Quartz | |
| KZ05R026 | Quartz | Chlorite | |
| KZ05R027 | Smectite | Quartz | |
| KZ05R028 | NONE | Quartz | |
| KZ05R029 | illite | Quartz | |
| KZ05R030 | illite | Quartz | |
| KZ05R031 | illite | Quartz | |
| KZ05R032 | illite | Quartz | |
| KZ05R033 | illite | Quartz | |
| KZ05R034 | illite | Quartz | |
| KZ05R035 | illite | Quartz | |
| KZ05R036 | illite | Quartz | |
| KZ05R037 | illite | Quartz | |
| KZ05R038 | illite | Quartz | |
| KZ05R039 | illite | Quartz | |
| KZ05R040 | illite | Quartz | |
| KZ05R041 | illite | Quartz | |
| KZ05R042 | illite | Quartz | |
| KZ05R043 | illite | Quartz | |
| KZ05R044 | illite | Quartz | |
| KZ05R045 | illite | Quartz | |
| KZ05R046 | illite | Quartz | |
| KZ05R047 | illite | Quartz | |
| KZ05R048 | illite | Quartz | |
| KZ05R049 | illite | Quartz | |
| KZ05R050 | illite | Quartz | |
| KZ05R051 | illite | Quartz | |
| KZ05R052 | illite | Quartz | |
| KZ05R053 | illite | Quartz | |
| KZ05R054 | illite | Quartz | |
| KZ05R055 | illite | Quartz | |
| KZ05R056 | illite | Quartz | |
| KZ05R057 | illite | Quartz | |
| KZ05R058 | illite | Quartz | |
| KZ05R059 | illite | Quartz | |
| KZ05R060 | illite | Quartz | |
| KZ05R061 | illite | Quartz | |
| KZ05R062 | illite | Quartz | |
| KZ05R063 | illite | Quartz | |
| KZ05R064 | illite | Quartz | |
| KZ05R065 | illite | Quartz | |
| KZ05R066 | illite | Quartz | |
| KZ05R067 | illite | Quartz | |
| KZ05R068 | illite | Quartz | |
| KZ05R069 | illite | Quartz | |
| KZ05R070 | illite | Quartz | |
| KZ05R071 | illite | Quartz | |
| KZ05R072 | illite | Quartz | |
| KZ05R073 | illite | Quartz | |
| KZ05R074 | illite | Quartz | |
| KZ05R075 | illite | Quartz | |
| KZ05R076 | illite | Quartz | |
| KZ05R077 | illite | Quartz | |
| KZ05R078 | illite | Quartz | |
| KZ05R079 | illite | Quartz | |
| KZ05R080 | illite | Quartz | |
| KZ05R081 | illite | Quartz | |
| KZ05R082 | illite | Quartz | |
| KZ05R083 | illite | Quartz | |
| KZ05R084 | illite | Quartz | |
| KZ05R085 | illite | Quartz | |
| KZ05R086 | illite | Quartz | |
| KZ05R087 | illite | Quartz | |
| KZ05R088 | illite | Quartz | |
| KZ05R089 | illite | Quartz | |
| KZ05R090 | illite | Quartz | |
| KZ05R091 | illite | Quartz | |
| KZ05R092 | illite | Quartz | |
| KZ05R093 | illite | Quartz | |
| KZ05R094 | illite | Quartz | |
| KZ05R095 | illite | Quartz | |
| KZ0 | | | |



| Rock Sample Assays | | | | | | | | | | |
|--------------------|-------------|----------|----------|----------|----------|----------|----------|----------|----------|--|
| Sample Number | Sample Type | Au (ppm) | Ag (ppm) | Pb (ppm) | Zn (ppm) | Cu (ppm) | As (ppm) | Hg (ppm) | Sb (ppm) | |
| KZ05R0074 | FLOAT | 0.004 | 0.1 | 3 | 67 | 4 | 2 | 0.005 | 1 | |
| KZ05R0077 | GRAB | 0.002 | 0.1 | 4 | 59 | 7 | 8 | 0.005 | 1 | |
| KZ05R0078 | FLOAT | 0.001 | 0.1 | 8 | 31 | 57 | 3 | 0.005 | 1 | |
| KZ05R0079 | GRAB | 0.0005 | 0.1 | 6 | 53 | 21 | 7 | 0.005 | 1 | |
| KZ05R0080 | FLOAT | 0.0005 | 0.1 | 11 | 91 | 7 | 1 | 0.005 | 1 | |
| KZ05R0081 | FLOAT | 0.003 | 3.5 | 3940 | 208 | 93 | 40 | 0.01 | 3 | |
| KZ05R0082 | FLOAT | 0.0005 | 0.4 | 259 | 24 | 4 | 223 | 0.21 | 10 | |
| KZ05R0083 | FLOAT | 0.0005 | 0.1 | 37 | 13 | 2 | 3 | 0.005 | 1 | |
| KZ05R0084 | GRAB | 0.0005 | 0.1 | 6 | 4 | 15 | 13 | 0.005 | 1 | |
| KZ05R0085 | GRAB | 0.002 | 0.7 | 118 | 18 | 7 | 63 | 0.005 | 1 | |
| KZ05R2083 | GRAB | 0.0005 | 0.1 | 10 | 9 | 3 | 60 | 0.005 | 1 | |
| KZ05R2084 | GRAB | 0.0005 | 0.1 | 3 | 60 | 74 | 6 | 0.05 | 3 | |
| KZ05R2085 | GRAB | 0.0005 | 0.5 | 128 | 5 | 11 | 30 | 0.005 | 1 | |
| KZ05R2086 | GRAB | 0.001 | 0.1 | 9 | 17 | 7 | 26 | 0.01 | 1 | |
| KZ05R2087 | GRAB | 0.0005 | 0.1 | 10 | 56 | 13 | 27 | 0.02 | 1 | |
| KZ05R2088 | FLOAT | 0.001 | 0.1 | 6 | 12 | 9 | 43 | 0.005 | 1 | |
| KZ05R2089 | FLOAT | 0.0005 | 0.1 | 8 | 71 | 15 | 23 | 0.02 | 1 | |
| KZ05R2090 | GRAB | 0.003 | 0.1 | 4 | 83 | 36 | 10 | 0.02 | 1 | |
| KZ05R2091 | GRAB | 0.002 | 0.1 | 8 | 56 | 13 | 45 | 0.01 | 1 | |
| KZ05R2092 | GRAB | 0.001 | 0.4 | 33 | 191 | 14 | 32 | 0.03 | 1 | |
| KZ05R2093 | GRAB | 0.0005 | 0.1 | 2 | 49 | 28 | 4 | 0.01 | 1 | |
| KZ05R2094 | GRAB | 0.0005 | 0.1 | 9 | 49 | 4 | 12 | 0.005 | 1 | |
| KZ05R2096 | GRAB | 0.0005 | 0.1 | 11 | 14 | 6 | 54 | 0.005 | 1 | |
| KZ05R3049 | GRAB | 0.0005 | 0.7 | 8 | 48 | 54 | 38 | 0.04 | 1 | |
| KZ05R3052 | FLOAT | 0.0005 | 0.1 | 13 | 43 | 6 | 13 | 0.01 | 1 | |
| KZ05R3053 | GRAB | 0.0005 | 0.1 | 20 | 37 | 7 | 38 | 0.01 | 1 | |
| KZ05R3054 | GRAB | 0.0005 | 0.2 | 23 | 21 | 5 | 24 | 0.005 | 1 | |
| KZ05R3055 | GRAB | 0.004 | 61.2 | 25200 | 2090 | 1755 | 38 | 0.06 | 8 | |
| KZ05R3056 | GRAB | 0.007 | 0.4 | 138 | 23 | 13 | 128 | 0.005 | 1 | |
| KZ05R3057 | GRAB | 0.0005 | 0.3 | 117 | 26 | 21 | 37 | 0.005 | 1 | |
| KZ05R3058 | GRAB | 0.0005 | 0.8 | 63 | 151 | 90 | 62 | 0.01 | 1 | |
| KZ05R3059 | GRAB | 0.006 | 0.3 | 19 | 20 | 54 | 212 | 0.005 | 1 | |

| Pima Alteration | | | |
|-----------------|------------|------------|------------|
| Sample Number | Pima Alt 1 | Pima Alt 2 | Pima Alt 3 |
| KZ05R0074 | Chlorite | | |
| KZ05R0077 | Quartz | | |
| KZ05R0078 | Quartz | | |
| KZ05R0079 | Illite | Epidote | |
| KZ05R0080 | Chlorite | | |
| KZ05R0081 | Quartz | Opal | |
| KZ05R0082 | Illite | Quartz | Epidote |
| KZ05R0083 | Illite | Quartz | |
| KZ05R0084 | Illite | Quartz | |
| KZ05R0085 | Illite | Quartz | |
| KZ05R2083 | Muscovite | Quartz | |
| KZ05R2084 | Epidote | Chlorite | Quartz |
| KZ05R2085 | Illite | Quartz | |
| KZ05R2086 | Quartz | Illite | |
| KZ05R2087 | Chlorite | Epidote | |
| KZ05R2088 | Illite | Chlorite | |
| KZ05R2089 | Illite | Chlorite | |
| KZ05R2090 | Chlorite | Muscovite | |
| KZ05R2091 | Muscovite | Chlorite | |
| KZ05R2092 | Illite | Chlorite | |
| KZ05R2093 | Illite | | |
| KZ05R2094 | Illite | Chlorite | Quartz |
| KZ05R2096 | Illite | Muscovite | |
| KZ05R3049 | Illite | Muscovite | |
| KZ05R3052 | Illite | Quartz | Kaolinite |
| KZ05R3053 | Illite | Quartz | |
| KZ05R3054 | Kaolinite | Quartz | |
| KZ05R3055 | Smectite | Muscovite | |
| KZ05R3056 | Illite | Quartz | |
| KZ05R3057 | NONE | Illite | |
| KZ05R3058 | Illite | Epidote | |
| KZ05R3059 | Muscovite | Quartz | |

Legend

BC Minfile

- Other
- As-quartz veins
- Carbonate-hosted disseminated Au-Ag
- EPITHERMAL
- Noranda/Kuroko massive sulphide Cu-Pb-Zn
- Pb-Zn skarn
- Polymetallic massive Ag-Pb-Zn
- Porphyry Cu & Mo-Ru
- Porphyry Mo (Low F-type)
- Subvolcanic Cu-Ag-Au (Ae-Sg)
- Ultramafic-hosted asbestos
- Kizmet Tenements 2005

Faults

- Normal Fault
- Thrust

250K Geology

- Shikou Group Volcanics
- Shikou Group Sediments
- Shikou Group Intrusives
- Lagerberg Group

Creeks and Rivers

- Defile
- Indefinite
- Left Bank
- Right Bank

Lakes

- Defile
- Indefinite

Kizmet Rock Samples

Au (ppm)

- 0.0001 - 0.001 ppm (0.0001%)
- 0.001 - 0.012 ppm (0.0001%)
- 0.013 - 0.050 ppm
- 0.051 - 0.100 ppm
- 0.101 - 0.500 ppm
- 0.501 - 2.500 ppm
- 2.501 - 17.400 ppm

Barrick Gold Corporation

KZ Area Targets, Geology, PIMA, Rock Samples

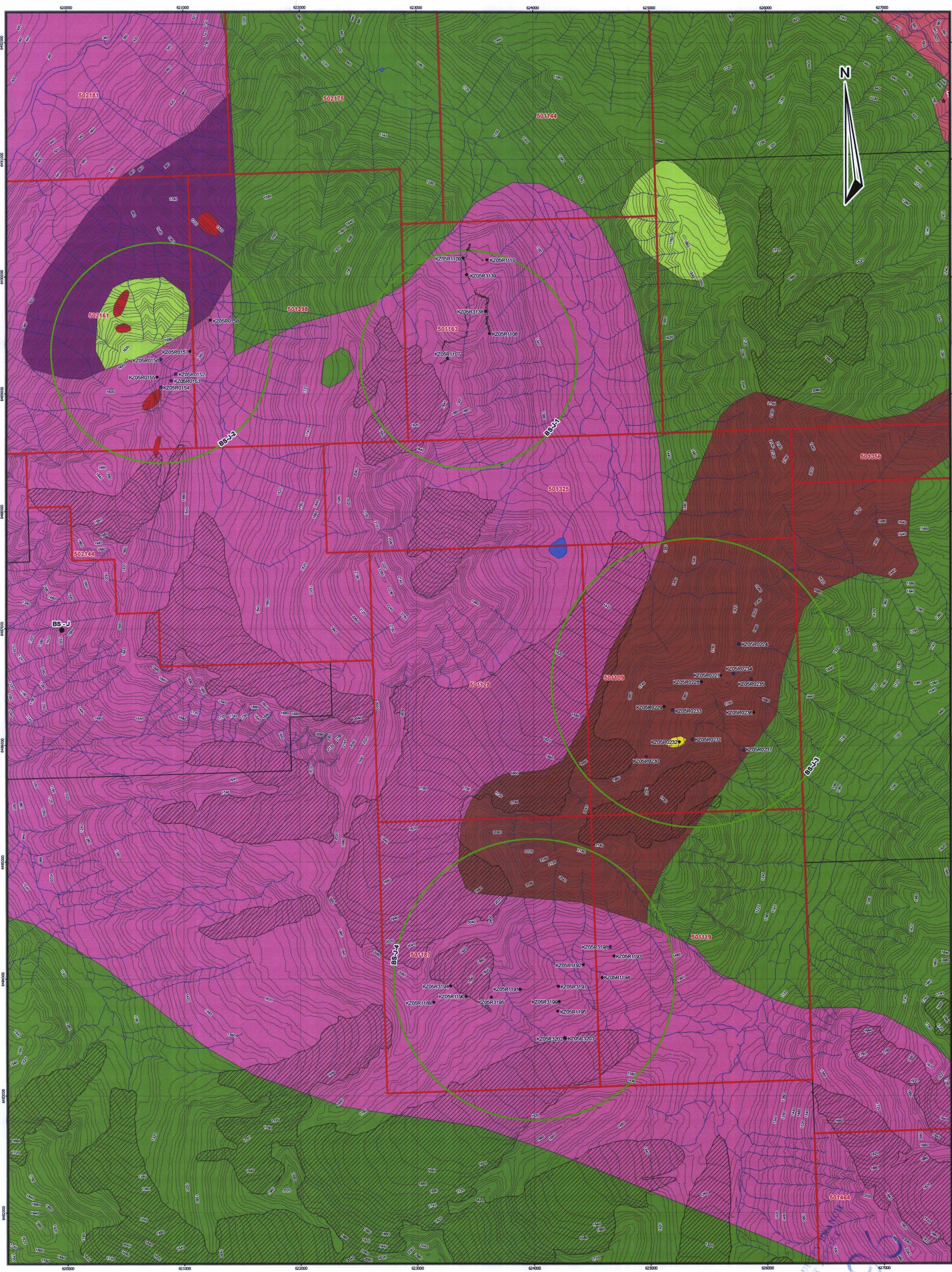
Author: ACN **Map No. 5**

Date: March 21, 2006 **Projection: UTM NAD 83, Zone 8**

Project: Kizmet **NTS: 104K**

Scale: 1:10,000

Located in:



Rock Sample Assays

| Sample Number | Sample Type | Au (ppm) | Ag (ppm) | Pb (ppm) | Zn (ppm) | Cu (ppm) | As (ppm) | Hg (ppm) | Sb (ppm) |
|---------------|-------------|----------|----------|----------|----------|----------|----------|----------|----------|
| KZ05R0152 | FLOAT | 0.0090 | 0.3 | 9 | 88 | 2 | 1 | 0.005 | 1 |
| KZ05R0153 | FLOAT | 0.0050 | 0.1 | 12 | 99 | 85 | 26 | 0.005 | 1 |
| KZ05R0154 | FLOAT | 0.0010 | 0.5 | 41 | 154 | 75 | 5 | 0.005 | 1 |
| KZ05R0155 | GRAB | 0.0005 | 0.2 | 1 | 201 | 127 | 29 | 0.030 | 5 |
| KZ05R0156 | GRAB | 0.0030 | 0.1 | 13 | 14 | 5 | 40 | 0.010 | 1 |
| KZ05R0157 | FLOAT | 0.0005 | 0.1 | 11 | 88 | 26 | 5 | 0.010 | 4 |
| KZ05R0158 | GRAB | 0.0005 | 0.1 | 6 | 53 | 10 | 6 | 0.010 | 2 |
| KZ05R0224 | GRAB | 0.0050 | 0.1 | 16 | 44 | 21 | 6 | 0.010 | 1 |
| KZ05R0227 | FLOAT | 0.0005 | 0.1 | 5 | 56 | 18 | 1 | 0.005 | 1 |
| KZ05R0228 | GRAB | 0.0005 | 0.1 | 5 | 51 | 24 | 42 | 0.005 | 2 |
| KZ05R0229 | GRAB | 0.0005 | 0.1 | 29 | 64 | 25 | 13 | 0.005 | 1 |
| KZ05R0230 | GRAB | 0.0010 | 0.1 | 2 | 30 | 6 | 13 | 0.005 | 1 |
| KZ05R0231 | GRAB | 0.0010 | 0.1 | 4 | 120 | 2 | 49 | 0.005 | 1 |
| KZ05R0232 | FLOAT | 0.0005 | 0.1 | 25 | 304 | 10 | 79 | 0.005 | 1 |
| KZ05R0233 | FLOAT | 0.0010 | 0.3 | 31 | 409 | 87 | 88 | 0.010 | 15 |
| KZ05R0234 | GRAB | 0.0070 | 0.7 | 58 | 27 | 31 | 1405 | 0.010 | 4 |
| KZ05R0235 | FLOAT | 0.0010 | 0.1 | 1 | 3 | 0.5 | 7 | 0.010 | 1 |
| KZ05R0236 | GRAB | 0.0005 | 0.1 | 27 | 178 | 27 | 32 | 0.010 | 2 |
| KZ05R0237 | FLOAT | 0.0010 | 0.1 | 7 | 57 | 81 | 166 | 0.005 | 1 |
| KZ05R1107 | FLOAT | 0.0005 | 0.1 | 14 | 30 | 8 | 3 | 0.005 | 1 |
| KZ05R1108 | GRAB | 0.0005 | 0.2 | 12 | 29 | 30 | 2 | 0.020 | 1 |
| KZ05R1109 | FLOAT | 0.0005 | 0.3 | 16 | 34 | 9 | 9 | 0.030 | 2 |
| KZ05R1190 | GRAB | 0.0005 | 0.1 | 16 | 32 | 17 | 1 | 0.005 | 2 |
| KZ05R1189 | FLOAT | 0.0005 | 0.1 | 18 | 28 | 13 | 6 | 0.005 | 1 |
| KZ05R1190 | FLOAT | 0.0005 | 0.1 | 11 | 28 | 6 | 2 | 0.005 | 1 |
| KZ05R1191 | FLOAT | 0.0005 | 0.1 | 17 | 48 | 9 | 2 | 0.005 | 1 |
| KZ05R1192 | FLOAT | 0.0005 | 0.1 | 7 | 29 | 9 | 5 | 0.005 | 1 |
| KZ05R1193 | FLOAT | 0.0005 | 0.1 | 7 | 25 | 6 | 4 | 0.005 | 1 |
| KZ05R1194 | FLOAT | 0.0005 | 0.1 | 7 | 23 | 23 | 18 | 0.005 | 11 |
| KZ05R1195 | FLOAT | 0.0005 | 0.1 | 7 | 19 | 15 | 7 | 0.005 | 1 |
| KZ05R1196 | FLOAT | 0.0005 | 0.1 | 5 | 111 | 33 | 4 | 0.010 | 1 |
| KZ05R1197 | FLOAT | 0.0005 | 0.1 | 9 | 34 | 4 | 1 | 0.010 | 2 |
| KZ05R1198 | FLOAT | 0.0005 | 0.1 | 16 | 34 | 37 | 11 | 0.005 | 1 |
| KZ05R1199 | FLOAT | 0.0005 | 0.1 | 4 | 54 | 8 | 3 | 0.005 | 2 |
| KZ05R1199 | FLOAT | 0.0005 | 0.1 | 7 | 26 | 42 | 6 | 0.010 | 1 |
| KZ05R1199 | FLOAT | 0.0090 | 0.1 | 18 | 44 | 3 | 3 | 0.005 | 1 |
| KZ05R1199 | FLOAT | 0.0005 | 0.1 | 4 | 54 | 8 | 3 | 0.005 | 2 |
| KZ05R2002 | FLOAT | 0.0020 | 0.1 | 15 | 45 | 4 | 1 | 0.005 | 1 |
| KZ05R2003 | FLOAT | 0.0005 | 0.1 | 6 | 57 | 8 | 7 | 0.005 | 1 |

PIMA Alteration

| Sample Number | PIMA Alt 1 | PIMA Alt 2 | PIMA Alt 3 |
|---------------|------------|------------|------------|
| KZ05R0152 | Illite | Quartz | |
| KZ05R0153 | Chlorite | Quartz | |
| KZ05R0154 | Illite | Epidote | Quartz |
| KZ05R0155 | Epidote | Illite | Quartz |
| KZ05R0156 | Illite | | |
| KZ05R0157 | NONE | | |
| KZ05R0158 | NONE | | |
| KZ05R0234 | Illite | Quartz | Epidote |
| KZ05R0227 | Illite | Epidote | |
| KZ05R0228 | Illite | Quartz | |
| KZ05R0229 | NONE | | |
| KZ05R0230 | Quartz | Illite | |
| KZ05R0231 | Illite | Quartz | Epidote |
| KZ05R0232 | Illite | Quartz | Chlorite |
| KZ05R0233 | Quartz | Epidote | |
| KZ05R0234 | Illite | Epidote | |
| KZ05R0235 | Dolomite | Quartz | |
| KZ05R0236 | Quartz | Illite | |
| KZ05R0237 | Chlorite | Quartz | Illite |
| KZ05R1107 | Kaolinite | Quartz | |
| KZ05R1108 | Kaolinite | Quartz | |
| KZ05R1109 | Kaolinite | Quartz | |
| KZ05R1110 | Quartz | Illite | |
| KZ05R1189 | Quartz | | |
| KZ05R1190 | | | |
| KZ05R1191 | Kaolinite | Quartz | Quartz |
| KZ05R1192 | Illite | Chlorite | |
| KZ05R1193 | Quartz | Illite | |
| KZ05R1194 | Quartz | Illite | |
| KZ05R1195 | Illite | Epidote | |
| KZ05R1196 | Kaolinite | | |
| KZ05R1197 | Kaolinite | Quartz | |
| KZ05R1198 | Kaolinite | Quartz | |
| KZ05R1199 | Illite | Quartz | |
| KZ05R2002 | Kaolinite | Quartz | |
| KZ05R2003 | Chlorite | Illite | Quartz |

Legend

BC Minfile

- Other
- Au-quartz veins
- Carbonate-hosted disseminated Au-Ag
- EPITHERMAL
- Noranda/Kuroko massive sulphide Cu-Pb-Zn
- Pb-Zn skarn
- Polymetallic massive Ag-Pb-Zn
- Porphyry Cu & Mo & Au
- Porphyry Mo (Low F-type)
- Subvolcanic Co-Ag-Au (Au-Sb)
- Ultramafic-hosted asbestos

Kizmet Project Mineral Titles

- BC Mineral Titles, Nov 23, 2005
- Barrick Complied Crosses
- Contours
- Glacier
- River - Deflate
- River - Indeflate
- River - Left Bank
- River - Right Bank

Lakes

- Lake - Deflate
- Lake - Intermittent

Faults

- Fault
- Normal Fault
- Thrust

Kizmet Rock Samples

Au (ppm)

- 0.0005 - 0.001 ppm (0-500%)
- 0.002 - 0.012 ppm (50-900%)
- 0.013 - 0.050 ppm
- 0.061 - 0.100 ppm
- 0.101 - 0.500 ppm
- 0.501 - 2.500 ppm
- 2.501 - 17.450 ppm
- Kizmet Traverses 2005

250 K Geology

- Stikine Group
- Stikine-Hyder Plutonic Suite
- Wendy Table Complex
- Laberge Group
- Shabini Group
- Stikine Assemblage

2005 Identified Volcanics

- Late Cretaceous-Paleogene subvolcanic

Located in:

Barrick Gold Corporation

BS-J Area

Targets, Geology, PIMA and Rock Samples

Author: ACN

Date: March 24, 2006

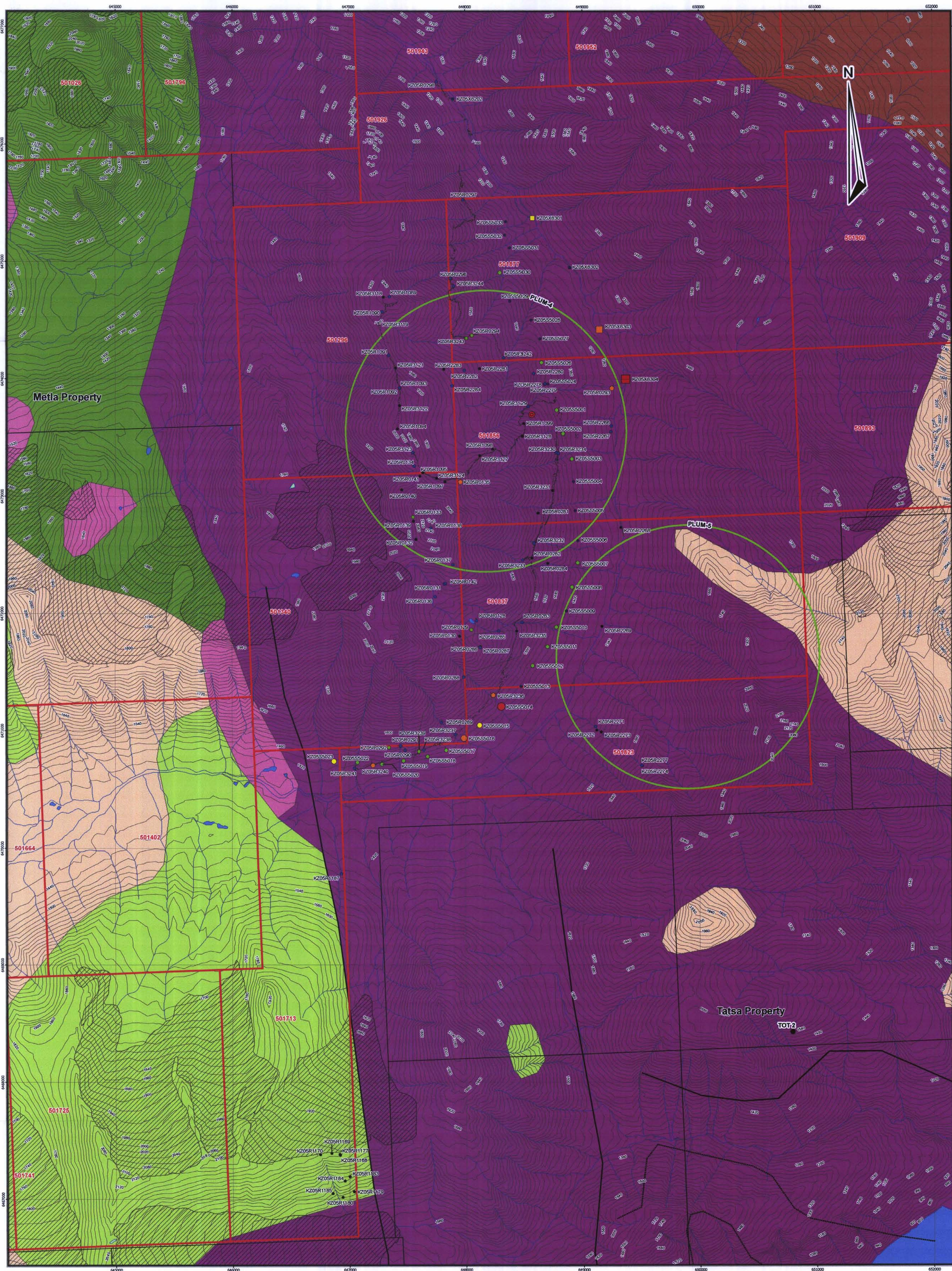
Project: Kizmet

Map No. 6

Projection: UTM NAD 83, Zone 8

NTS: 104K

Scale: 1:15,000



| Sample Number | Sample Type | Au (ppm) | Ag (ppm) | Pb (ppm) | Zn (ppm) | Cu (ppm) | As (ppm) | Hg (ppm) | Sb (ppm) | PIMA Alteration | PIMA AL 1 | PIMA AL 2 | PIMA AL 3 |
|---------------|-------------|----------|----------|----------|----------|----------|----------|----------|----------|-----------------|------------|------------|-----------|
| KZ05R0128 | FLOAT | 0.0010 | 0.1 | 1 | 13 | 50 | 292 | 0.060 | 10 | KZ05R0128 | Chlorite | Episodic | |
| KZ05R0129 | FLOAT | 0.0005 | 0.2 | 14 | 22 | 4 | 9 | 0.060 | 4 | KZ05R0129 | Dolomite | Episodic | |
| KZ05R0130 | FLOAT | 0.0010 | 0.2 | 22 | 19 | 3 | 100 | 0.180 | 2 | KZ05R0130 | Illite | | |
| KZ05R0131 | FLOAT | 0.0005 | 0.1 | 1 | 41 | 4 | 3 | 0.005 | 1 | KZ05R0131 | Dolomite | | |
| KZ05R0132 | FLOAT | 0.0005 | 0.1 | 1 | 41 | 4 | 3 | 0.005 | 1 | KZ05R0132 | Dolomite | | |
| KZ05R0133 | FLOAT | 0.0020 | 0.1 | 2 | 43 | 256 | 14 | 0.030 | 1 | KZ05R0133 | Chlorite | Illite | Quartz |
| KZ05R0134 | FLOAT | 0.0020 | 0.1 | 1 | 38 | 105 | 91 | 0.380 | 3 | KZ05R0134 | Chlorite | Illite | Quartz |
| KZ05R0135 | FLOAT | 0.2000 | 4.8 | 1 | 26 | 3570 | 368 | 25.600 | 30 | KZ05R0135 | Quartz | Gypsum | |
| KZ05R0136 | FLOAT | 0.0020 | 0.1 | 1 | 43 | 232 | 4 | 0.010 | 1 | KZ05R0136 | Chlorite | Episodic | |
| KZ05R0137 | FLOAT | 0.0020 | 0.2 | 1 | 28 | 135 | 7 | 0.020 | 1 | KZ05R0137 | Chlorite | Illite | |
| KZ05R0138 | FLOAT | 0.0020 | 0.5 | 3 | 24 | 2790 | 91 | 0.030 | 1 | KZ05R0138 | Quartz | Episodic | |
| KZ05R0139 | GRAB | 0.0005 | 0.1 | 1 | 14 | 20 | 10 | 0.080 | 1 | KZ05R0139 | Chlorite | Illite | |
| KZ05R0140 | GRAB | 0.0005 | 0.1 | 1 | 53 | 58 | 4 | 0.005 | 1 | KZ05R0140 | Chlorite | Illite | |
| KZ05R0141 | GRAB | 0.0005 | 0.1 | 1 | 40 | 115 | 2 | 0.010 | 1 | KZ05R0141 | Chlorite | Actinolite | |
| KZ05R0142 | FLOAT | 0.0010 | 0.1 | 2 | 48 | 70 | 4 | 0.005 | 1 | KZ05R0142 | Chlorite | Episodic | |
| KZ05R0281 | GRAB | 0.0005 | 0.1 | 1 | 25 | 6 | 3 | 0.020 | 1 | KZ05R0281 | Dolomite | Illite | Quartz |
| KZ05R0282 | GRAB | 0.0005 | 0.1 | 1 | 44 | 26 | 1 | 0.020 | 1 | KZ05R0282 | Dolomite | | |
| KZ05R0283 | FLOAT | 0.0020 | 0.1 | 1 | 27 | 24 | 70 | 0.210 | 7 | KZ05R0283 | Illite | | |
| KZ05R0284 | FLOAT | 0.0020 | 0.2 | 16 | 10 | 6 | 10 | 0.070 | 1 | KZ05R0284 | Smectite | | |
| KZ05R0285 | FLOAT | 0.0040 | 0.2 | 11 | 35 | 3 | 22 | 0.005 | 1 | KZ05R0285 | Muscovite | | |
| KZ05R0286 | GRAB | 0.0005 | 0.1 | 1 | 89 | 19 | 118 | 0.960 | 1 | KZ05R0286 | Kaolinite | | Dickite |
| KZ05R0287 | FLOAT | 0.0030 | 0.3 | 3 | 43 | 48 | 196 | 0.080 | 24 | KZ05R0287 | Dickite | | |
| KZ05R0288 | FLOAT | 0.0080 | 0.1 | 11 | 9 | 2 | 175 | 0.010 | 3 | KZ05R0288 | Illite | | |
| KZ05R0289 | FLOAT | 0.0020 | 0.1 | 1 | 31 | 134 | 8 | 0.010 | 2 | KZ05R0289 | Illite | Chlorite | Muscovite |
| KZ05R0290 | GRAB | 0.0060 | 0.1 | 1 | 22 | 4 | 468 | 0.020 | 6 | KZ05R0290 | Dolomite | | |
| KZ05R0291 | GRAB | 0.0050 | 0.1 | 16 | 12 | 2 | 51 | 0.005 | 2 | KZ05R0291 | Illite | | |
| KZ05R0292 | FLOAT | 0.0100 | 0.4 | 10 | 36 | 11 | 174 | 0.020 | 6 | KZ05R0292 | Dolomite | | |
| KZ05R0293 | FLOAT | 0.2700 | 87 | 2 | 249 | 34400 | 421 | 0.800 | 3 | KZ05R0293 | Smectite | | |
| KZ05R0294 | FLOAT | 0.0100 | 0.1 | 1 | 8 | 259 | 6 | 0.010 | 1 | KZ05R0294 | Dolomite | Chlorite | |
| KZ05R0295 | FLOAT | 0.0030 | 0.2 | 2 | 39 | 347 | 3 | 0.010 | 1 | KZ05R0295 | Chlorite | Episodic | |
| KZ05R0297 | FLOAT | 0.0010 | 0.1 | 4 | 42 | 35 | 4 | 0.010 | 1 | KZ05R0297 | Chlorite | Episodic | |
| KZ05R0298 | FLOAT | 0.0020 | 0.4 | 1 | 49 | 103 | 3 | 0.020 | 2 | KZ05R0298 | Chlorite | Quartz | |
| KZ05R0299 | GRAB | 0.0005 | 0.1 | 4 | 26 | 57 | 8 | 0.010 | 1 | KZ05R0299 | Chlorite | Episodic | |
| KZ05R1090 | FLOAT | 0.0040 | 0.1 | 6 | 22 | 21 | 15 | 0.030 | 1 | KZ05R1090 | Chlorite | Episodic | |
| KZ05R1091 | GRAB | 0.0040 | 0.2 | 12 | 41 | 158 | 4 | 0.060 | 2 | KZ05R1091 | Actinolite | Dolomite | |
| KZ05R1092 | FLOAT | 0.0100 | 0.1 | 1 | 15 | 15 | 67 | 0.010 | 7 | KZ05R1092 | Dolomite | | |
| KZ05R1093 | GRAB | 0.0080 | 0.1 | 1 | 15 | 86 | 46 | 0.480 | 20 | KZ05R1093 | Kaolinite | | |
| KZ05R1094 | GRAB | 0.0005 | 0.1 | 7 | 36 | 81 | 24 | 0.010 | 1 | KZ05R1094 | Illite | | |
| KZ05R1095 | GRAB | 0.0005 | 0.1 | 6 | 47 | 106 | 6 | 0.010 | 1 | KZ05R1095 | Chlorite | Episodic | |
| KZ05R1097 | FLOAT | 0.0005 | 0.2 | 7 | 44 | 84 | 15 | 0.020 | 2 | KZ05R1097 | Chlorite | Quartz | |
| KZ05R1098 | GRAB | 0.0005 | 0.2 | 8 | 25 | 284 | 26 | 0.005 | 1 | KZ05R1098 | Chlorite | Episodic | |
| KZ05R1099 | GRAB | 0.0005 | 0.1 | 7 | 31 | 134 | 8 | 0.010 | 2 | KZ05R1099 | Illite | Quartz | |
| KZ05R1168 | FLOAT | 0.0005 | 0.1 | 23 | 45 | 3 | 3 | 0.110 | 1 | KZ05R1168 | Illite | Quartz | |
| KZ05R1169 | FLOAT | 0.0005 | 0.1 | 17 | 25 | 2 | 2 | 0.020 | 1 | KZ05R1169 | Quartz | Smectite | |
| KZ05R1170 | GRAB | 0.0005 | 0.3 | 9 | 58 | 13 | 2 | 0.005 | 2 | KZ05R1170 | Smectite | Illite | |
| KZ05R1171 | FLOAT | 0.0005 | 0.1 | 9 | 30 | 3 | 1 | 0.005 | 1 | KZ05R1171 | Smectite | Quartz | |
| KZ05R1179 | GRAB | 0.0005 | 0.1 | 17 | 79 | 4 | 3 | 0.010 | 1 | KZ05R1179 | Muscovite | Quartz | |
| KZ05R1180 | FLOAT | 0.0005 | 0.1 | 24 | 36 | 2 | 1 | 0.005 | 1 | KZ05R1180 | Quartz | Muscovite | |
| KZ05R1183 | GRAB | 0.0005 | 0.1 | 15 | 54 | 7 | 2 | 0.005 | 1 | KZ05R1183 | Quartz | Muscovite | |
| KZ05R1184 | FLOAT | 0.0005 | 0.1 | 19 | 15 | 2 | 1 | 0.005 | 1 | KZ05R1184 | Muscovite | Quartz | |
| KZ05R1185 | FLOAT | 0.0005 | 0.1 | 11 | 11 | 3 | 1 | 0.010 | 1 | KZ05R1185 | Muscovite | Quartz | |
| KZ05R1187 | FLOAT | 0.0020 | 0.1 | 1 | 13 | 4 | 38 | 0.420 | 7 | KZ05R1187 | Dolomite | | |
| KZ05R2265 | GRAB | 0.0080 | 0.1 | 1 | 52 | 97 | 8 | 0.060 | 1 | KZ05R2265 | Chlorite | | Quartz |
| KZ05R2266 | GRAB | 0.0005 | 0.1 | 1 | 62 | 94 | 1 | 0.040 | 1 | KZ05R2266 | Chlorite | | |
| KZ05R2268 | GRAB | 0.0005 | 3.8 | 5 | 406 | 9100 | 4450 | 1.310 | 175 | KZ05R2268 | Illite | | |
| KZ05R2269 | FLOAT | 0.0005 | 0.2 | 19 | 26 | 35 | 19 | 0.170 | 2 | KZ05R2269 | Illite | | |
| KZ05R2271 | FLOAT | 0.0010 | 0.1 | 1 | 5 | 2 | 1 | 0.002 | 1 | KZ05R2271 | Kaolinite | | |
| KZ05R2272 | FLOAT | 0.0005 | 0.1 | 1 | 2 | 3 | 1 | 0.020 | 1 | KZ05R2272 | Kaolinite | | |
| KZ05R2273 | FLOAT | 0.0005 | 0.1 | 1 | 9 | 3 | 1 | 0.005 | 1 | KZ05R2273 | Kaolinite | | |
| KZ05R2274 | FLOAT | 0.0005 | 0.1 | 1 | 11 | 3 | 1 | 0.010 | 1 | KZ05R2274 | Kaolinite | | |
| KZ05R2277 | FLOAT | 0.0020 | 0.1 | 1 | 67 | 19 | 1 | 0.030 | 1 | KZ05R2277 | Kaolinite | | |
| KZ05R2278 | FLOAT | 0.0080 | 0.1 | 6 | 161 | 47 | 113 | 0.570 | 4 | KZ05R2278 | Kaolinite | | |
| KZ05R2279 | FLOAT | 0.0010 | 0.1 | 11 | 15 | 9 | 8 | 0.002 | 1 | KZ05R2279 | Kaolinite | | |
| KZ05R2280 | FLOAT | 0.0010 | 0.1 | 1 | 17 | 11 | 28 | 0.060 | 1 | KZ05R2280 | Kaolinite | | |
| KZ05R2281 | GRAB | 0.0005 | 0.1 | 1 | 21 | 34 | 190 | 0.190 | 6 | KZ05R2281 | Dolomite | | |
| KZ05R2282 | FLOAT | 0.0010 | 0.1 | 1 | 15 | 8 | 1 | 0.002 | 1 | KZ05R2282 | Kaolinite | | |
| KZ05R2283 | GRAB | 0.0005 | 0.1 | 1 | 82 | 53 | 5 | 0.030 | 1 | KZ05R2283 | Episodic | | |
| KZ05R2284 | FLOAT | 0.0010 | 0.1 | 1 | 22 | 8 | 25 | 0.130 | 1 | KZ05R2284 | Dolomite | | |
| KZ05R2285 | FLOAT | 0.0005 | 0.2 | 7 | 39 | 7 | 2 | 0.110 | 1 | KZ05R2285 | Actinolite | Chlorite | |
| KZ05R3119 | GRAB | 0.0005 | 0.1 | 8 | 40 | 80 | 1 | 0.005 | 1 | KZ05R3119 | NONE | | |
| KZ05R3121 | FLOAT | 0.0005 | 0.1 | 7 | 26 | 110 | 44 | 0.002 | 1 | KZ05R3121 | Kaolinite | | |
| KZ05R3122 | GRAB | 0.0005 | 0.4 | 3 | 11 | 46 | 18 | 0.070 | 7 | KZ05R3122 | Chlorite | Illite | Quartz |
| KZ05R3123 | GRAB | 0.0060 | 0.1 | 3 | 38 | 117 | 1 | 0.020 | 1 | KZ05R3123 | Episodic | | |
| KZ05R3124 | FLOAT | 0.0005 | 0.1 | 1 | 71 | 75 | 0 | 0.020 | 1 | KZ05R3124 | Chlorite | | |
| KZ05R3127 | GRAB | 0.0005 | 0.1 | 1 | 38 | 173 | 1 | 0.010 | 1 | KZ05R3127 | Calcite | | |
| KZ05R3128 | GRAB | 0.0005 | 0.1 | 1 | 40 | 34 | 1 | 0.005 | 1 | KZ05R3128 | Chlorite | Dolomite | |
| KZ05R3129 | GRAB | 0.0005 | 0.3 | 2 | 29 | 870 | 0 | 0.020 | 1 | KZ05R3129 | Calcite | | |
| KZ05R3230 | FLOAT | 0.0005 | 0.1 | 1 | 15 | 82 | 7 | 0.020 | 1 | KZ05R3230 | Kaolinite | | |
| KZ05R3231 | FLOAT | 0.0030 | 0.1 | 1 | 54 | 164 | 128 | 0.470 | 1 | KZ05R3231 | Illite | | |
| KZ05R3232 | FLOAT | 0.0010 | 0.1 | 1 | 23 | 74 | 52 | 0.880 | 28 | KZ05R3232 | Kaolinite | | |
| KZ05R3233 | GRAB | 0.0020 | 0.1 | 1 | 15 | 167 | 19 | 0.020 | 1 | KZ05R3233 | Illite | | |
| KZ05R3234 | FLOAT | 0.0010 | 0.1 | 1 | 1 | 5 | 12 | 0.060 | 1 | KZ05R3234 | Kaolinite | | |
| KZ05R3235 | GRAB | 0.0005 | 0.1 | 1 | 1 | 1 | 1 | 0.030 | 1 | KZ05R3235 | Kaolinite | | |
| KZ05R3236 | FLOAT | 0.1900 | 0.2 | 1 | 15 | 3600 | 62 | 0.170 | 13 | KZ05R3236 | Illite | | Dolomite |
| KZ05R3237 | FLOAT | 0.0060 | 0.2 | 16 | 8 | 13 | 54 | 0.040 | 3 | KZ05R3237 | Talc | | |
| KZ05R3238 | FLOAT | 0.0010 | 0.1 | 2 | 24 | 18 | 7 | 0.020 | 1 | KZ05R3238 | Chlorite | | |
| KZ05R3239 | FLOAT | 0.0020 | 0.6 | 1 | 30 | 5870 | 5 | 0.030 | 1 | KZ05R3239 | Chlorite | | |
| KZ05R3240 | FLOAT | 0.1500 | 18.1 | 6 | 29 | 27 | 131 | 1.010 | 9 | KZ05R3240 | Kaolinite | | |
| KZ05R3241 | FLOAT | 0.0010 | 0.1 | 7 | 35 | 28 | 47 | 0.130 | 2 | KZ05R3241 | Kaolinite | | |
| KZ05R3242 | GRAB | 0.0010 | 0.1 | 1 | 35 | 144 | 31 | 0.880 | 3 | KZ05R3242 | Quartz | Smectite | |
| KZ05R3243 | FLOAT | 0.0020 | 3.8 | 13 | 129 | 837 | 3100 | 12.200 | 671 | KZ05R3243 | Quartz | | |
| KZ05R3244 | FLOAT | 0.0060 | 0.1 | 5 | 6 | 144 | 28 | 0.130 | 9 | KZ05R3244 | Quartz | Smectite | |

| Sample No | Au (ppm) | Ag (ppm) | Pb (ppm) | Zn (ppm) | Cu (ppm) | As (ppm) | Hg (ppm) | Sb (ppm) |
|-----------|----------|----------|----------|----------|----------|----------|----------|----------|
| KZ05S5001 | 0.0010 | 0.08 | 2.1 | 60 | 94.7 | 18.2 | 0.06 | 1.08 |
| KZ05S5002 | 0.0050 | 0.09 | 2 | 61 | 82.9 | 23.4 | 0.05 | 1.47 |
| KZ05S5003 | 0.0020 | 0.06 | 1.8 | 48 | 115 | 13.4 | 0.04 | 0.87 |
| KZ05S5004 | 0.0005 | 0.09 | 2.8 | 62 | 55 | 27.2 | 0.05 | 2.31 |
| KZ05S5005 | 0.0005 | 0.13 | 2.3 | 51 | 57 | 27.9 | 0.06 | 2.45 |
| KZ05S5006 | 0.0005 | 0.13 | 3.1 | 73 | 122.5 | 45.2 | 0.45 | 6.94 |
| KZ05S5007 | 0.0010 | 0.1 | 2.5 | 55 | 106 | 27 | 0.08 | 2 |
| KZ05S5008 | 0.0020 | 0.04 | 3.7 | 79 | 85.9 | 62.7 | 0.07 | 5.13 |
| KZ05S5009 | 0.0005 | 0.13 | 2.7 | 80 | 95.4 | 37.4 | 0.16 | 6.37 |
| KZ05S5010 | 0.0020 | 0.07 | 3.1 | 62 | 172.5 | 50.8 | 0.09 | 4.13 |
| KZ05S5011 | 0.0030 | 0.04 | 3.8 | 70 | 114 | 76.7 | 0.04 | 5.23 |
| KZ05S5012 | 0.0010 | 0.13 | 3.2 | 62 | 96 | 69.5 | 0.04 | 4.19 |
| KZ05S5013 | 0.0005 | 0.18 | 3.8 | 55 | 167.5 | 76.9 | 0.11 | 7.34 |
| KZ05S5014 | 0.0200 | 0.11 | 5 | 99 | 132 | 186. | | |

