

ASSESSMENT REPORT ON THE DARDANELLES PROPERTY
April 11, 2005
for the

Dardanelle 1, 2, 3
Dar 2, 4, 5, 6, 7, 8, 11, 12
Mineral Claims

SKEENA MINING DIVISION
22 Km. East of Terrace, B. C.

Work Permit MX 1-638

NTS 103 I 8 FOR 1:50,000 SCALE Maps

OR

NTS 103 I 049
and extending into 059, 050, and 060 for the 1: 20,000 scale TRIM maps.

UTM Coordinates for Adit Portal
Using Datum NAD 83, UTM 9
549393 E
6037462 N

Owners
W. H. McRae as to 50%
J. Georgilas as to 50%

Operator
Trade Winds Ventures Inc.
Suite 302-1620 West 8th Ave.
Vancouver, B.C. V6J 1V4
Tel: (604) 675-7637

CONSULTANT and AUTHOR
Alex Burton, P. Eng., P. Geo.
Consulting Geologist
Burton Consulting Inc.
1408 Seventh Avenue
New Westminster, B. C. V3M 2K3
Tel/Fax: (604) 525-8403
Email: aburton@shaw.ca

TABLE OF CONTENTS

PAGE

INTRODUCTION 1
GEOGRAPHIC and PHYSIOGRAPHIC POSITION of the
CLAIMS and ACCESS
PROPERTY DEFINITION
CLAIMS ON WHICH WORK WAS DONE
SUMMARY OF WORK DONE
EXCAVATOR TRENCHING
DIAMOND DRILLING
COST STATEMENT
AUTHOR’S QUALIFICATIONS

APPENDIX

- I. Notes on Surface Samples
- II. Diamond Drill Hole Logs
- III. Invoices for Work Done in 2005 by Burton Consulting Inc.
List of Invoices.
Burton Consulting Invoices 1a, 1-17,19
- IV. Diamond Drill Invoice

MAPS

- LOCATION MAP
- CLAIM MAP
- DDH 1, 2005, Along Grid Line 11+75 E
- DDH 2, 2005, Along Grid Line 11+60 E
- DDH 3, 4, and 5, 2005, Along Grid Line 14+50 E
- SURFACE TRENCH MAP

INTRODUCTION

The Dardanelles claims were explored in 2004 by Trade Winds Ventures Inc. They did maintenance work on the road to gain access to the adit and showings then laid out a base line and cross lines to run a soil geochemical survey and map the location of the exposed veins and trenches.

In 2005 the company again explored the claims using an excavator to trench along the surface trace of the aplite dyke and its associated gold bearing veins. Three locations were diamond drilled. This report covers the results of that work.

The exploration was to determine if there was offset faulting of the dyke/vein combination, or if there were more than one set of dyke/vein combinations. Also to test vertical continuity of the veins with the diamond drill.

The excavator trenching showed that more trenching is needed before an unequivocal decision can be made on whether there is only one set of a fault offset dyke/vein, or whether there are possibly three sets of the dyke/vein combinations that are parallel to each other.

Three portions of the dyke/vein combinations were diamond drilled for information on their character and to define the surface to adit level continuity of the vein systems. The drilling showed good vertical continuity of the dyke/vein structures.

For 2006 work is recommended to definitively find if there is more than one system, and to trace the system(s) further along strike.

GEOGRAPHIC and PHYSIOGRAPHIC POSITION of the CLAIMS and ACCESS

The Dardanelles Gold Property is 22 km. east of Terrace, B. C. on the north side of the Zymoetz (Copper) River. The property is on the east flank of the Coast Range Mountains adjacent to the Hazelton Mountains (sometimes known as the Bulkley Mountains), along the eastern edge of the Coast Range batholithic intrusive rocks. Along the edge of the batholithic and intruded rocks the topography is mountainous with a well developed system of major and tributary rivers with significant modifications to their character by the processes of glaciation and especially deglaciation.

From the Terrace area west there are two major valleys. One is west to Prince Rupert the Skeena River channel and the other heading to Kitimat has major deglaciation terraces which gave rise to the name Terrace for the city. The Zymoetz (Copper) River runs from its headwaters first south, then west to join in to the south side of the Skeena River system. During glaciation certain streams were diverted at their higher elevations. But during deglaciation, major valleys were dammed by glacial ice and debris which formed lakes. The Zymoetz was one of these valleys and it had a series of gravel beaches deposited along the slopes of the Dardanelles Property at lower elevations for each

succession of benches or beaches. It is these benches on the property that mask the underlying bedrock and dyke with its associated veins making soil geochemistry and exploration difficult.

Access to the claims can be by helicopter from the available services at Terrace. There is a landing site at the portal at McNeil Creek and another landing site cleared out on a bench about half way up the length of the vein trace, which was made as an emergency First Aid landing site.

The claims have sometimes been accessed by road from the south side of the Copper River using a boat to cross the river and then walking up the trail to the portal.

The most common access is by road. Driving east from Terrace cross the Copper River bridge, then turn right at the next road to the south and follow it to near Km.11 where a side track takes off to the right or west to join up with the BC Hydro power line road. Follow the steep and rough power line road to the lower bench where it crosses the second half of the original mining road built by Fred Wells in the 1930's.

Wells' road started from the main highway and follows a low bench along the north side of the Copper River to the portal. The first portion has half a dozen bridges that are rotted away so the rougher hydro road must be used instead. If production is envisioned, then the old mining road could be cleared out and the bridges rebuilt giving a much better access route to the portal. It would have minimum snow fall in the winter and be easier to maintain. One bridge on the road was replaced to give access to the property. The tracks or roads on the claims were brushed out of second growth trees and shrubs to allow the use of ATV's to move crews beyond the adit portal for over 600 metres along the vein strike trace.

The claims are shown on a regional map, and on a detailed local map showing the various roads.

PROPERTY DEFINITION

In the early 1920's the Copper River valley in this area was completely burned in a serious forest fire. Prospectors took advantage of the clear openings and more visible outcrops and discovered the Dardenelles veins and aplite dyke as well as other properties in the district. Since that time the trees have grown back to be nearly mature enough that they could be logged. Under the trees there is considerable underbrush and a very thick layer of moss and lichen covering the surface, which makes travel difficult and identification of outcrops difficult. Had this area not been burned it is unlikely the veins would have been discovered.

Fred Wells, who became famous developing gold mines in the Cariboo developed the property. He built the 14 mile access road to McNeil Creek and drove the 560 metre adit along the vein strike. He installed a dam and pipeline bringing water to the Pelton Wheel power plant next to the adit. This provided electric power for the machinery and air compressor. The adit was properly laid out to follow along the strike trace of the veins, but soon was no longer in the veins. A series of unexpected cross cutting faults had offset the veins just enough so that the adit was parallel to, but missed the veins.

After Well's death a series of operators explored the property, but it was not until 1988 that Univex Mining Corporation hired Burton Consulting Inc. that the adit was reported and then washed so it could be mapped. The mapping discovered the offset of the veins by the series of cross faults. Univex was sold as a shell company and the property went into limbo. In 2004 owners Bill McRae and John Georgilas optioned the claims to Trade Winds Ventures Inc., who hired Burton Consulting Inc. to explore the claims.

The 1988 geochemical trial survey showed that it was a valid exploration technique on this project. The 2004 program was laid out to do a soil geochemical survey along the strike trace of the vein system to see if the vein could be traced through the deglaciation gravel benches covering the claims. As part of the exploration permit from the provincial government one rotted bridge on the access road was replaced through a BC Forestry permit, and the portal set and doors to the adit had to be replaced. In addition, trees and shrubs were cleared from the road and claim trails to give access for the soil sample crews. During the course of running the soil sampling picket lines it became obvious that there likely was fault offsets to the trace of the veins/dyke system. The trace of the dyke/vein system is shown on the inset to the 2004 geochemical maps.

The intrusive rocks are generally considered to be Late Cretaceous to Early Tertiary in age and to have been intruded from 80 to 30 million years ago, They are composed of granite, quartz monzonite, and lesser granodiorite. East of the intrusives are the predominately volcanic rocks of the earlier Lower and Middle Jurassic Hazelton Series.

On the claims a N 070 trending aplite dyke occurs in a shear in the intrusive country rock. The dyke is a few to five metres wide and dips about 80 N. Gold bearing quartz veins occur along both the footwall and hangingwall side of the aplite dyke. Gold and silver

with lesser values of copper, lead and zinc are the potential economic elements in the veins. Gold assays range from trace to over an ounce per ton.

Accurate measurements of the length and depth and grade of oreshoots have not yet been ascertained. The vein/dyke system has been traced for over 2,000 metres along strike and plus 400 metres in elevation. Anecdotal information states that the dyke/vein system continues at least another 500 metres to the east. To the west below the adit portal the ground is covered with overburden. Where exposed the hangingwall vein appears to be continuous, ranging from one to three metres in width. The footwall vein is similar, but may be missing or thin in a few places along strike. There are smaller discontinuous veins in the granitic country rock not associated with the aplite dyke. Only one aplite dyke is known for sure, but there have been discoveries of aplite float off the strike trace of the dyke, and soil geochemical anomalies are also off strike. The past references to other quartz veins may equally relate to fault offset portions or to other parallel aplite/vein systems.

The ground is solid and stable, the veins are near vertical and wide enough to be mined economically with gravity drop to a main haulage level that already is 560 metres long. It seems reasonable to explore to outline the portions of the veins that are high enough grade to be profitably mined. No camp would be required as the portal would be less than an hour drive from Terrace on a road route that could easily be maintained in the winter. There is unlikely to be any deleterious or strongly acidic substances in the ore to be an environmental concern. There is room enough below the portal elevation to build a mill and space enough on one of the lower benches for tailings. The plant is near the B. C. Hydro power line, and from past example enough electricity might be generated from the local creeks to power the operation.

With careful interpretation the geochemical soil results are useful in outlining areas to explore.

The 2005 exploration program of excavator trenching and then diamond drilling is covered under the section "Summary of Work Done".

CLAIMS ON WHICH WORK WAS DONE

Work on the Dardanelles Property was done on the following mineral claims:

<u>Name</u>	<u>Tenure No.</u>
Dar 8	398666
Dar 6	398664
Dar 4	398662
Dar 2	398660
	517726

Work was applied to the grouped claims Dar 2, 4,5,6,7,8,11,and 12 Legacy claims and the new cell claims 517726, 517515, and 510719 for a total of \$ 59,659.56.

A total of \$97,004.21 was credited to PAC account W H McRae.

The “Good To” date for all the claims is now December 02, 2015 with the exception of Dar 2 Tenure No. 398660 which lies within the new cell claims and is valid until Dec 02, 20014.

The claims are shown on an inset part of the 1:1000 surface map in the pocket at the back of the report.

Work permit from the Ministry of Mines is MX-1-638 issued to Trade Winds Ventures Inc.

SUMMARY OF WORK DONE

Exploration work in 2005 consisted of an excavator trenching program followed by diamond drilling the vein system.

The salient points from the 2005 trenching program are as follows. We were unable to find shallow enough overburden for trenching to the southwest along the trace of the veins below the elevation of the portal. The portal was started at the lowest known outcrop position near the trace of the vein. The elevation of the portal is at the lowest logical place for a mill and tailings pond.

We partially traced the vein system between the portal and the old shaft, but were unable to prove either a single fault offset dyke / vein system, or three systems. If the structure is fault offset then the faults must be at a low angle almost parallel to the dyke / veins to account for the positions of the outcrops. There is no evidence for such low angle faults.

This section of the property has extensive gravel benches and limited outcrop areas due to the extensive deglaciation lakeshore gravel beaches formed as the lake level dropped sequentially. Time was spent mapping float from both the dyke and from the vein. The surface trace of the veins was projected from outcrops to aid in the mapping. This work formed the basis for the lay out of the position of the excavator trenches. In all cases, but one, the excavator trenches found the dyke / vein systems along the 2,000 metre strike trace length explored.

The gravel beaches are thinnest closest to the old shoreline and thickest at the front of the delta portion furthest into what was the lake. Trenching could penetrate to bedrock about half way from the shore to the delta edge of each beach where the depth exceeded the 20 foot (6 m) reach of the excavator.

We successfully traced the vein system continuously from the old shaft (about midway along the vein trace) to the present end of the road. There is no fault offset on the system in this portion although there are mild flexures as the system pinches and swells slightly.

We found aplite and vein float uphill from the trace of the dyke / vein system indicating the possible presence of parallel systems.

We know of old hand dug trenches with vein material, dyke outcrops, and dyke and vein float further along strike to the northeast for at least 1,025 metres beyond the present end of the road indicating the same structure continues strongly.

On general trenching and mapping plus drill pad set up and core logging with sampling \$118,966.73 was spent.

\$37,697.04 was spent directly on the diamond drilling

At least 540 linear metres of excavator trenching was dug to expose the dyke and veins. The dyke and veins were mapped and sampled.

Four diamond drill holes were completed to planned depth, but the fifth hole did not reach planned depth due to mechanical breakdown of the motor.

EXCAVATOR TRENCHING

A Caterpillar EX 120 Excavator was used to trench and expose the aplite dyke and the associated quartz veins. Over 540 linear metres of trenching was accomplished. The trenches are shown on the 1:100 scale surface map as well as the locations of the dyke and the vein samples along the trenches. Fifty chip samples were taken across full width of vein from the excavator trenches. The samples were labeled T for trench. Numbered from T-2005-01 to T-2005-41, with some A, B, or C samples taken at a few sites, to total 50 samples. The assay certificates are included in the Appendix.

DIAMOND DRILLING

An older Model 28 Longyear skid mounted hydraulic wire line diamond drill was supplied by Adam Diamond Drilling of Princeton, B. C. Core diameter was NQ size.

Diamond Drill Hole Dar 1 had three samples.

Diamond Drill Hole Dar 2 had four samples.

Diamond Drill Hole 3 had three samples.

Diamond Drill Hole 4 had three samples.

Diamond Drill Hole 5 had no samples.

The granodiorite – quartz diorite of the batholithic intrusive generally drilled well with good recovery. The aplite dyke was extremely hard and fine grained so was slow drilling with considerable wear on bits. The quartz veins were much easier drilling than the aplite dyke and usually gave excellent recovery. However where there was ribbon vein structure developed with the presence of significant sulphides the vein tended to break up and recovery typically was about 25% of the vein consisting of quartz buttons and sulphide fragments. The better mineralized shoots were found in the ribbon structure vein areas.

When sampling the drill core of the intrusive rock types, and good recovery sections of quartz veins, the samples were split using a standard core splitter. For the ribbon quartz vein with poor recovery all of the chips and buttons for that section were taken for assaying.

At ALS Chemex in North Vancouver, B. C. samples were crushed and pulverized to 85% <75 um. A 30 gram sample portion was analyzed by FA and AA finish for gold, and aqua regia/AAS for trace Ag and for ore grade Ag by aqua regia/AA. No ICP analysis was done for other elements.

Diamond drilling was done on three separate areas.

Hole one called Dar 01, 2005 bearing 340 degrees at -45 degrees was drilled from the footwall side of what is suspected to be the southernmost aplite/vein section. The footwall vein was present as a series of veinlets with low to modest gold values in an altered zone of the intrusive 3.2 m (10.5 feet) wide. The hangingwall vein was a 0.8m (2.5feet) wide milky quartz vein with little sulphides and low gold values.

Hole two called Dar 02, 2005 bearing 340 degrees at (-) 45 degrees was drilled from the main aplite/vein portion near its westernmost continuous outcrop portion. The well developed 2 m wide banded ribbon quartz with sulphides surface exposure of the footwall vein had changed at depth in the drill hole to 30m (100foot) wide zone of alteration, shearing, and veinlets with low gold values. The hole was stopped due to mechanical difficulties before it drilled through the aplite dyke to the hangingwall vein which appeared to be widening to depth when viewed from the surface outcrops.

Drill holes three, four, and five were drilled from midway along the strike exposure of the main dyke/vein system from the same set up above the old shaft.

Hole Dar 3, 2005, bearing 160 degrees was drilled at (-) 45 degrees. It penetrated the hangingwall vein 1.4m (4.5 feet) exposed in the old shaft nearby and showed the same ribbon texture with plentiful sulphides similar to the high grade exposed in the shaft. Poor recovery affected assays in this high grade section as gold values ranged from 17.85, 0.46, and 0.17 ppm. The footwall vein was also the banded ribbon type of vein with good sulphides, but poor recovery across 0.6m (2 feet) gave low gold assays.

Hole Dar 4, 2005 bearing 160 degrees was drilled at (-) 60 degrees and hit the hangingwall and footwall veins at a lower depth than hole three. In hole 4 the

hangingwall vein was 1.4m (4.5 feet) with good sulphides including galena, but poor recovery assayed 4.0 and 5.2 ppm Au.

Hole Dar 5, 2005 was drilled at (-) 90 degrees. It encountered a very thin sheared 7.6 cm (3 ") hangingwall vein with only a few flecks of pyrite. The hole drilled another 11.8m (39 ') of hard aplite when the drill motor failed and the drilling was abandoned for the season without reaching the footwall vein.

Collar positions of the drill holes were tied in to the local property grid picket line system which has less than 3% error. We also used a Trimble "Ensign" model GPS when in poor sky angle positions to the satellites. A Trimble "Geo Explorer" model GPS was used where better sky angles to the satellites could be measured as the Geo Explorer has considerable more accuracy potential and can be downloaded to the Trimble Pathfinder computer position calculation system capable, under good satellite and sky angle of satellites conditions, of establishing readings accurate to less than a metre. The steep slopes and deep valleys meant that the drill collars positional accuracy ranged from less than 5 metres to as much as 25 metres from its actual position.

The diamond drill logs with UTM co – ordinates for the collars are included in the Appendix.

The drill hole positions are plotted on the 1:1000 scale surface map in the pocket at the back of the report.

COST STATEMENT

The statement in the Appendix is a copy of invoices for the 2005 job on the Dardanelles Property paid for by the client, Trade Winds Ventures Inc. Detailed rates and expenditures are listed in the accompanying invoices from Burton Consulting Inc. to Trade Winds Ventures Inc.

Burton Consulting Inc. personnel:

Alex Burton	45 days
Cathy Burton	26 days

Personnel from Terrace:

W.H. McRae	2 days
D. Ethier	3 days
William Foote	70 hrs.
George Chinn	374 hrs.
Louis Pedro	10 hrs.
Norm Goodlad	9 hrs.

Burton Consulting Inc. sub-contracted to the following Terrace firms:

W.H. McRae (expediting services)
D.J. McKay Enterprises Ltd.(Excavater and bulldozer)
T. Montague (Bridge building)

Total invoiced expenditures on the claims	\$114,466.73
Note that report preparation and map draughting costs are not included.	
Diamond Drilling	<u>\$ 37,697.04</u>
Paid directly by Tradewinds Ventures Inc.	
Total Expenditures	\$ 152,163.77
Less amount applied for assessment on claims	<u>59,659.56</u>
Excess expenditure Credited to PAC Account	\$ 97,004.21

AUTHOR'S QUALIFICATIONS

The author, Alex Burton, P. Eng., P. Geo., is a Consulting Geologist and President of Burton Consulting Inc.

I am a graduate of the University of British Columbia in Geology 1954, and am registered as a Professional Engineer and Geoscientist with the Association of Professional Engineers of BC, #6262.

I am a founding Member of the Association of Exploration Geochemists (now called Association of Applied Geochemists.) I am a life member of the CIMM, and of AGID.

I supervised the work on the Dardanelles property in 1988 through several visits. In 2004, and in 2005 I was on the Dardanelles property on a daily basis supervising the exploration work.

I have over fifty years of mining exploration experience.

Alex Burton, P. Eng., P. Geo
Consulting Geologist

March 28, 2006

Email: aburton@shaw.ca

Tel/Fax: (604)525-8403

File: Trdwnds\darassrpt2005.doc

- T-2005-10 28 metres west of H-18. The vein is 145 cm. wide. 50 cm. sheared quartz hangingwall, 30 cm. massive quartz central rib, 65 cm. footwall, rusty, ribbon quartz vein. 3 metres south of the grid station 15+75 east 9+30 north.
- T-2005-11 30 metres west of H-18. The vein is 120 cm. wide. Rusty with sulphides, central massive quartz band.
- T-2005-12A 31 ½ metres west of H-18. The vein is 30 cm. wide. It's sheared rusty granodiorite hangingwall.
- T-2005-12B 31 ½ metres west of H-18. The vein is 90 cm. wide. The central part of quartz vein is massive quartz with heavy sulphides. The hangingwall of the central quartz vein is sheared rusty quartz with septa of sheared micaceous granodiorite. The footwall side of the quartz vein is sheared quartz with sheared micaceous granodiorite and aplite.
- T-2005-12C 31 ½ metres west of H-18. The vein is 70 cm. wide. It's sheared country rock. Some rust, some manganese.
- T-2005-13 33 metres west of H-18. The vein is 60 cm. wide. It's quartz with lots of sulphides.
- T-2005-14 35 metres west of H-18. The vein is 90 cm. wide. The quartz vein is massive quartz with sulphides.
- T-2005-15 36 ½ metres west of H-18. The vein is 130 cm. wide. It has central massive quartz sheared ribbon quartz on hangingwall and footwall sides. The central section of the massive quartz is quite rusty.
- T-2005-16A 38 ½ metres west of H-18. The vein is 30 cm. wide. It is sheared granodiorite.
- T-2005-16B 38 ½ metres west of H-18. The vein is 140 cm. wide. It is a banded ribbon quartz vein.
- T-2005-16C 38 ½ metres west of H-18. The vein is 130 cm. wide. It is sheared aplite.
- T-2005-17 41 metres west of H-18. The vein is 160 cm. wide. It's good quartz, some rusty bands, some septa of sheared (?) aplite.
- T-2005-18A 43 metres west of H-18. The vein is 45 cm. wide. It is a rusty vein. 40 cm. across that is the hangingwall side of the vein in 18B.

T-2005-18B 43 metres west of H-18. The vein is 30 cm. wide. There is a 10 cm. massive quartz loaded with galena. Bearing 110 degrees distance, 27 metres from 15 + 50E/9 + 57N to picket at west end of vein exposed in trench.

DUTCH LOAF

Between sump and Dutch Loaf at 15 + 00E there were no samples taken. At the west end of the Dutch Loaf. From 14+75 east, 9+50 north station on a 055 bearing – 15 ½ metres to face of mineralization extending to 18.8 meters on bench above first sample site.

T-2005-19 18.8 metres. The vein is 70 cm. wide. It is massive quartz vein with galena bunches.

T-2005-20A 15 ½ metres. The vein is 60 cm. wide. Hangingwall of sheared granodiorite.

T-2005-20B 15 ½ metres. The vein is 57 cm. wide. Massive quartz vein with 5 cm. galena bunches.

T-2005-20C 15 ½ metres. The vein is 20 cm. wide. Footwall sheared aplite.

T-2005-21 10 ½ metres. Grab sample, no width. End of sampling in this area.

DITCH, ON EAST SIDE OF ROAD, OPPOSITE SHAFT

From 14+50 east, 9+50 north, 022 bearing.

T-2005-22 10 metres from station 14+50 east, 9+50 north, 022 bearing to the hangingwall vein in ditch on east side of road. This area is east of the shaft. The vein is 65 cm. wide.

T-2005-23 The vein is 75 c. wide. From station 14+50 east, 9+50 north, 060 bearing. 7 metres to footwall vein.

SHAFT AREA

Shaft area on west side of the road. Footwall vein in pit, is in clump of cedars from station 14+50 east, 9+50 north 245 degrees, 7.3 metres. The vein here is footwall contact with aplite exposed, southern edge of vein not exposed in trench. Minimum vein width plus 60 cm.

T-2005-24 Grab sample. The vein here is +60 cm. wide.

In addition to the three samples from the station, it is a bearing of 262 to the northeast corner of the shaft – 17.6 metres. Vein width in shaft is 190 cm.

T-2005-25 8.0 metres from 4 + 50E/9 + 50 N. The vein is 160 cm. wide. 300 degrees of bearing. Same quartz vein as in shaft.

T-2005-26 9.2 metres. The vein is 180 cm. wide. 280 degrees of bearing.

T-2005-27 12.8 metres. The vein is 100 cm. wide. 265 degrees of bearing.

From sample T-2005-25 to T-2005-22 is 12 metres.

From station 14+50 east, 9+50 north is 320 degree bearing to the drill collar of DAR DDHoles 03, 04 and 05.

From the northeast corner of the shaft on the hangingwall vein going 13 metres – bearing 242 degrees, this takes you to the hangingwall side of the hangingwall vein in a pit.

T-2005-28 (Hangingwall pit). The vein is 200 cm. wide. From 14+25 east, 9+60 north go 120 degrees for 7 metres to sample T-2005-28.

T-2005-29 The vein is 60 cm. wide. Hangingwall vein – west of T-2005-28 at edge of old bulldozer cut. From 14+25 east, 9+60 north, go 200 degrees for 9.5 metres to T-2005-29.

T-2005-30 The footwall vein is 80 cm. wide. From sample T-2005-31 to sample T-2005-30 on a bearing of 060 degrees, a distance of 5 metres – from sample T-2005-30 to the northeast corner of the shaft is due north a distance of 10 metres.

T-2005-31 The vein width is 95 cm. From sample T-2005-28 to sample T-2005-31 we are going 140 degrees bearing across aplite trench 8.5 metres. Sample T-2005-31 is 14+25 east, 9+40 north, 202 degree bearing.

T-2005-32 The vein width is 90 cm. From sample T-2005-31 to sample T-2005-32 is 250 degree bearing and 6 metres. It's a shattered vein.

ROAD WEST OF SHAFT

On the road west of the shaft from station 14+25 east, 9+40 north, we go 270 degrees, 14 metres to south side of road opposite footwall vein. The vein is wider than 100 cm. It needs further digging.

T-2005-33A)
&) Note: These two samples were not taken
T-2005-33B)

At about 23 metres we turn southwest along the lower road crossing line 14+00 east. At 13+75 east, 9+40 north is a vein trench on the north side of the road.

T-2005-34 The vein is 85 cm. wide. At 13+75 east, 9+43.9 north. Hangingwall quartz vein, fine grained sulphides, pyrite plus possible sulphosalts.

T-2005-35 13+72 east, 9+43 north. The vein is 70 cm. wide. Hangingwall vein. Bunches of pyrite.

EAST OF THE HILTON

T-2005-36 The vein is 105 cm. wide. Hangingwall quartz vein. The station at the top of the trench, edge of road is 13+25 east, 9+60 north. Vein hangingwall is at 13+25 east, 9+54 north. The trench runs bearing of 120 degrees from vein hangingwall to aplite footwall in trench with no vein. A granodiorite is 10.9 metres along the length of the trench.

BELOW THE HILTON

The hangingwall of the aplite has no vein. It is 060 degrees bearing from station 12+75 east, 9+50 north and 9.2 metres.

T-2005-37A The vein is 110 cm. wide. From 12+75 east, 9+50 north, go 095 degrees bearing, 14 metres to footwall vein to sample T-2205-37A.

T-2205-37B The vein is 130 cm. wide. 2 metres west of sample T-2005-37A.

T-2205-37C The vein is 60 cm. wide. It was a grab sample and is 6 metres west of sample T-2005-37A.

EAST OF SAND HILL

12+25 east, 9+50 north go 12 metres 095 degrees bearing to hangingwall vein in the road cut. This is east of the sand hill along the old road.

T-2005-38 The vein is 106 cm. wide. White quartz.

RIGHT ANGLE CORNER

Above DDH-02 on the hangingwall vein on the aplite, three samples were taken from east to west.

T-2005-39 The vein is 30 cm. wide. A sample of 30 cm. of weathered vein was taken. (Below where this sample was taken, an adit went into the hill approximately 7 ft. and dropped down about 4 ft.)

T-2005-40 The vein was 65 cm. wide. Rusty, weathered, hangingwall vein with fine grained sulphides. This vein was 3 metres lower than previous sample T-2005-39 and one metre west. This is on the brow of the portal.

T-2005-41 This was a grab sample. Taken at right angle corner 24 metres west of road edge from footwall vein.

NOTE ON LOCAL GEOLOGY:

Above right angle corner above hangingwall side of aplite is an adesite dyke about 10 metres north of aplite dyke 1 metre wide. Attitude – 125 degrees/70 degrees south dip. This is above DAR DDH 02, 2005.

APPENDIX II

DIAMOND DRILL HOLE LOGS

DARDANELLES PROPERTY DIAMOND DRILLING

A GPS position was taken at the edge of the dump in line with the adit portal using Datum NAD 83. This GPS position will allow other observers using GPS to find the collars of the diamond drill holes which were drilled in 2005. Collars have a log plug with stapled aluminum tags with collar information.

<u>Geexplorer:</u>	<u>GPS Ensign:</u>
UTM 9 549393.2 U 6037462.4 3D HAE 172 Metres Satellites: 6	UTM9 549392 U 6037459 Altitude: 180 Metres PDOP 4.5 Satellites: 6

DAR DDH 01, 2005

Bearing at 340 degrees, minus 45 degree dip. This hole goes from 0' – 166' (0 – 50.6 m.) The elevation is 220 metres. Core diameter is NQ.

Collar position by GPS (UTM). Picket grid co-ordinates 11 + 75E, 9 + 35N.

<u>Geexplorer:</u>	<u>GPS Ensign:</u>
Couldn't obtain valid reading	UTM 9 549650 U 6037494 Altitude: 240 metres PDOP 5.6 Satellites: 5

Collar position is about 25 metres west; okay for northing.

Metres (m)	Feet (ft)	Description
0 - 1.5 m	0 - 5'	Casing
1.5 - 2.1 m	5' - 7'	Caved rubble
2.1 - 8.2 m	7' - 27'	Intrusive rock is fractured hornblende, diorite, minor quartz, chloritic alteration of mafics. Pink feldspar flooding light chlorite and manganese stain along fractures.
8.2 - 12.2 m	27' - 40'	Hornblende granodiorite less altered and fractured than Box Late stage pink feldspars, minor quartz.

12.2 - 14.0 m	40' - 46'	Andesite, fine grained.
14.0 - 15.2 m	46' - 50'	Same coarse grained hornblende, granodiorite less altered and fractured than Box 1. Hornblende granodiorite less altered and fractured than Box 1. Late stage pink feldspars, minor quartz. (same as 27' - 40').
15.2 - 17.0 m	50' - 56'	Fine grained skarnized intrusive or altered volcanic with brown garnets and epidotes, minor pyrite.
17.0 - 19.2 m	56' - 63'	Fine grained, altered zone goes to 73 ½', (volcanics or intrusives?) More carbonate alteration of feldspar phenocrysts. 63' - 73 ½' is a zone of altered intrusive cut by small quartz veins.
19.2 - 20.4 m	63' - 67'	At 63' is a ½" quartz vein at 20 degrees to core.
20.4 - 21.0 m	67' - 69'	Another 4" quartz vein is at 67' - 68' (20.4 - 20.7 m) at 25 degrees to core is 4" thick.
21.0 - 21.3 m	69' - 70'	From 69'-70' (21.0 - 21.3 m) is quartz vein, barren. Quartz vein contains brecciated fragments of country rock.
21.3 - 21.9 m	70' - 72'	From 70' - 72' is the same rock type as above (56' - 73 ½') (17.0 - 22.4 m).
21.9 - 22.4 m	72' - 73 ½'	From 72' - 73 ½' there is a mineralized alteration zone, creamy carbonate alteration with associated fine grained pyrite, which is cut by discontinuous milky quartz veins.
22.4 - 28.8 m	73 ½' - 94 ½'	Aplite, goes from 73 ½' - 150'.
28.8 - 29.1 m	94 ½' - 95 ½'	Caved rubble that fell into the hole from below the casing. Note: Aplite on either side of rubble fits together perfectly. Contact of aplite is chilled. Aplite is creamy white and contains corroded round quartz eyes. Pale pink twinned feldspar phenocrysts, occasional fractures at 40 degrees to core contain minor blebs of chalcopyrite. Other fractures contain pyrite and traces of unidentified black sulphides.
29.1 - 45.7 m	95 ½' - 150'	Aplite. At 143 ½' (43.7 m) there is 1" of caved rubble. Aplite on either side of the rubble matches. Contact angle of aplite 30 degrees to core.
45.7 - 46.5 m	150' - 152 ½'	Vein - hangingwall description quite milky quartz bands within brecciated fragments of country rock and creamy carbonate plus chlorite shears. Pyrite associated with chlorite alteration of country rock fragments. No introduced sulphides seen. Hanging wall rock sheared with carbonate and chlorite alteration.
46.5 - 47.2 m	152 ½' - 155'	Shearing and alteration in intrusive adjacent to vein dies out within two feet.
47.2 - 49.7 m	155' - 163'	Intrusive granodiorite becoming more epidote altered in the last 3' (163' - 166').
49.7 - 50.6 m	163' - 166'	From 163' - 166' is strong epidote alteration. End of Diamond Drill Hole 01 is at 166'.

Samples taken for assay were from:

20.4 - 21.3 m	67' - 70'	Au 0.01 ppm
---------------	-----------	-------------

21.9 – 22.3 m	72' – 73'	Au 0.60 ppm
45.7 – 46.5 m	150' – 152 ½'	Au 0.06 ppm

These samples were not split – 100% of the core was taken for assay.

FOOTAGES OF CORE IN EACH BOX DAR DDH 01, 2005

Box 1	0' – 27'	
Box 2	27' – 45 ½'	
Box 3	45 ½' – 62 ½'	
Box 4	62 ½' – 78 ½'	
Box 5	78 ½' – 95 ½'	
Box 6	95 ½' – 113 ½'	
Box 7	113 ½' – 131'	
Box 8	131' – 147 ½'	
Box 9	147 ½' – 164'	
Box 10	164' – 166'	Hole ends at 166'

DAR DDH 02, 2005

340 degrees, minus 45 degree dip. This hole goes from 0' – 189'.
GPS Readings taken on July 10, 2005

Collar position by GPS (UTM). Picket grid co-ordinates 11 + 52E, 9 + 60N.

<u>Geoexplorer:</u>	<u>Ensign:</u>
UTM 9 549609.0 U 6037525.9 3D HAE 238 metres Satellites: 5 UTM position is actually 10 metres too far east and 30 metres too far north	UTM 9549598 U 6037512 Altitude: 270 metres PDOP 3.2 Satellites: 6 UTM position is close for east and 10 metres too far north

Metres (m)	Feet (ft)	Description
0 – 3.0 m	0' – 10'	Casing
3.0 – 3.7 m	10' – 12'	Rubble
3.7 – 4.6 m	12 – 15'	Chips of granodiorite
4.6 – 12.2 m	15' – 40'	Granodiorite, originally medium to coarse grained, now altered, mafic to chlorite plus minor epidote and carbonate.
12.2 – 16.8 m	40' – 55'	Altered hematitic stain, sheared.
16.8 – 18.3 m	55' – 60'	Altered granodiorite
18.3 – 18.9 m	60' – 62'	Carbonate epidote alteration zone with hairline quartz and white calcite veinlets.
18.9 – 21.0 m	62' – 69'	Altered granodiorite
21.0 – 27.1 m	69' – 89'	same as 60' – 62' (18.3 – 18.9 m) (carbonate epidote alteration zone with hairline quartz and white calcite veinlets).
27.1 – 28.0 m	89' – 92'	Coarse grained slightly altered granodiorite
28.0 – 28.2 m	92' – 92 ½'	Gouge fault, bright green
28.2 – 30.8 m	92 ½' – 101'	Granite, salmon pink phenocryst feldspar, quartz and chloritic altered mafics, coarse grained, micro fractured and cut by epidote, quartz, fine grained veins, all later cut by later fine grained silica veinlets. Split core sample taken from 92 ½' – 101'.
30.8 – 51.2 m	101' – 168'	Granite, pink; similar to 92 ½' -101' (28.0 – 30.8 m). At 103' there is a 2" aplite dyke 30 degrees to core with 1/8" – ¼" quartz vein on both contacts.

		No visible sulphides. Altered granite and vein chips (poor sample) split core taken from 131' – 136' (39.9 – 41.5 m); footwall vein offshoot. Assay Au 0.02 ppm. Altered granite sample of split core taken from 149' – 151' (45.4 – 46.0 m). Assay Au < 0.01 ppm. At 135' is a 1" dark red aplite at 40 degrees to core. Core sample 149' – 151' (45.4 – 46.0 m), assay Au < 0.01 ppm. (46.0 – 47.5 m) split core sample of altered granite. Assay Au 0.01 ppm.
51.2 – 51.8 m	168' – 170'	Aplite to end of hole at 189'. Vein, footwall, two narrow veins, first at 40 degrees to core. Second smaller vein normal to first vein.
51.8 – 57.6 m	170' – 189'	Aplite. Note: Hole stopped due to mechanical breakdown before drill went through aplite to footwall quartz vein.

Samples taken for assay were from:

28.2 – 30.8 m	92 ½' – 101'	Au 0.02 ppm
39.9 – 41.51 m	131' – 136'	Au 0.02 ppm
45.4 – 46.0 m	149' – 151' (149' – 150')	(a few chips – poor recovery) Au < 0.01 ppm
46.0 – 47.51 m	151' – 156'	Au 0.01 ppm

These samples were split for assay.

FOOTAGES OF CORE IN EACH BOX DAR DDH 02, 2005

Box 1	0 – 28 ½'
Box 2	28 ½' – 49'
Box 3	49' – 69'
Box 4	69' – 89'
Box 5	89' – 107'
Box 6	107' – 125'
Box 7	125' – 147'
Box 8	147' – 163'
Box 9	163' – 180 ½'
Box 10	180 ½' – 189' End of Diamond Drill Hole 02

DAR DDH 03, 04 and 05, 2005

All three holes drilled from the same set up.

<u>Geoexplorer:</u>	<u>Ensign:</u>
UTM 9 549885.5 U 6037640.6 HAE 353 metres 3D Satellites: 4 GPS position is 4 metres too far west. North is okay.	UTM 9 549889 U 6037650 Altitude: 360 metres PDOP 4.0 Satellites: 5 East is okay. UTM are 5 metres too far North.

Picket grid co-ordinates 14 + 45E, 9 + 77N.

Altimeter readings: Watch: 350 metres
Thommen: 345 metres

DAR DH 03, 2005

Bearing on Hole 03 is 160 degrees, dip is minus 45 degrees

Metres (m)	Feet (ft)	Description
0 – 2.1 m	0' – 7'	Casing
2.1 – 8.4 m	7' – 27 ½'	Granodiorite, moderately fresh
8.4 – 8.8 m	27 ½' – 29'	Andesite dyke
8.8 – 12.8 m	29' – 42'	Granodiorite, chloritic, sheared and altered.
12.8 – 20.4 m	42' – 67'	Granodiorite, light coloured, alteration is sericitic and minor pink feldspars.
20.4 – 21.9 m	67' – 72'	Brecciated andesite dyke
21.9 – 23.2 m	72' – 76'	Same as granodiorite (42' – 67').
23.2 – 23.8 m	76' – 78'	Granodiorite silicified.
23.8 – 25.1 m	78' – 82 ½'	Vein. Hangingwall vein, poor recovery on hanging wall contact. Vein well mineralized with pyrite, galena plus some bands of chalcopyrite. Vein has ribbon texture similar to surface shaft vein. Many chips of vein with lots of pyrite, galena and chalcopyrite. Portions of vein are rusty with green copper stain. Last 6" of vein has little sulphides and consists mainly of quartz with minor sericite. Poor recovery of high grade section.

25.1 – 33.1 m	82 ½' – 108 ½'	Aplite, pink. Between 101' (30.8 m) and 106' (32.3 m) there is 18" (0.45 m) of core. Poor recovery (3 ½' missing).
33.1 – 33.7 m	108 ½'-110 ½'	Vein (footwall vein. Poor recovery, ribbon banded vein, more chalcophyrite than pyrite. Some galena, traces of sericite.
33.7 – 34.1 m	110 ½' – 112'	Granodiorite
34.1 – 34.6 m	112' – 113 ½'	Andesite dyke
34.6 – 38. m	113 ½' – 126'	Granodiorite End of the diamond drill hole 03 at 126' (38.4 m).

Samples taken for assay are from:

23.8 – 24.8 m	78' – 81 ½'	Hangingwall vein. (Poor recovery, just chips). Assay Au 17.85 ppm
24.8 – 25.2 m	81 ½' – 82 ½'	Hangingwall vein. Assay Au 0.46 ppm
33.1 – 33.7 m	108 ½' – 110 ½'	Footwall vein, poor recovery, just handful of chips Assay Au 0.17 ppm

These samples were not split – 100% of core and chips were taken for assay.

FOOTAGES OF CORE IN EACH BOX - DAR DDH 03, 2005

Box 1	0' – 23'
Box 2	23' – 42'
Box 3	42' – 59'
Box 4	59' – 82 ½'
Box 5	82 ½' – 100'
Box 6	100' – 122'
Box 7	122' 126'

DAR DDH 04, 2005

<u>Geoexplorer:</u>	<u>Ensign:</u>
UTM 9 549885.5 U 6037640.6 HAE 353 metres 3D Satellites: 4 GPS position is 4 metres too far west. North is okay.	UTM 9 549889 U 6037650 Altitude: 360 metres PDOP 4.0 Satellites: 5 East is okay. UTM are 5 metres too far North.

Picket grid co-ordinates 14 + 45E, 9 + 77N.

Altimeter readings: Watch: 350 metres
Thommen: 345 metres

Bearing of drill hole is 160 degrees and Dip is minus 60 degrees.

Metres (m)	Feet (ft)	Description
0 – 1.5 m	0' – 5'	Casing
1.5 – 10.7 m	5' – 35'	Granodiorite
10.7 – 11.0 m	35' – 36'	Andesite dyke
11.0 – 26.5 m	36' – 87'	Granodiorite
26.5 – 28.5 m	87' – 93 ½'	Fine grained diorite or coarse grained andesite
28.5 – 34.9 m	93 ½' – 114 ½'	Granodiorite
34.9 – 36.3 m	114 ½' -119'	Vein, hangingwall vein. Quartz vein banded or ribbon texture. Pale green waxy talc (minor amounts). Patches of chalcopyrite, pyrite and strong banded galena at 117' (35.7 m) with pyrite and chalcopyrite with galena at 3" wide band. From 117' – 119' (35.7 – 36.3 m) narrow ribbon bands of galena, pyrite and chalcopyrite. 50 degrees to core.
36.3 – 38.1 m	119' – 125'	Granodiorite
38.1 – 42.5 m	125' – 139 ½'	Aplite, pink.
42.5 – 43.0 m	139 ½' - 141'	Vein. Banded ribbon vein with patches of pyrite, chalcopyrite, minor galena. Vein at 40 degrees to core.

43.0 – 44.5 m	141' – 146'	Granodiorite, finer grained
44.5 – 47.2 m	146' – 155'	Granodiorite. End of Diamond Drill Hole 04 at 155'.

Samples taken for assay were from:

34.9 – 35.7 m	114 ½' – 117'	Assay Au 4.04 ppm
35.7 – 36.3 m	117' – 119'	Assay Au 5.24 ppm
42.5 – 43.0 m	139 ½' – 141'	Assay Au 0.11 ppm

These samples were not split – 100% of core was taken for assay.

FOOTAGES OF CORE IN EACH BOX – DAR DDH 04, 2005

Box 1	0' – 21 ½'
Box 2	21 ½' – 36'
Box 3	36' – 53'
Box 4	53' – 71'
Box 5	71' – 90'
Box 6	90' – 108 ½'
Box 7	108 ½' – 124 ½'
Box 8	124 ½' – 141'
Box 9	141' – 155'

DAR DDH 05, 2005

<u>Geoexplorer:</u>	<u>Ensign:</u>
UTM 9 549885.5 U 6037640.6 HAE 353 metres 3D Satellites: 4 GPS position is 4 metres too far west. North is okay.	UTM 9 549889 U 6037650 Altitude: 360 metres PDOP 4.0 Satellites: 5 East is okay. UTM are 5 metres too far North.

Picket grid co-ordinates 14 + 45E, 9 + 77N.

Altimeter readings: Watch: 350 metres
Thommen: 345 metres

Bearing – Vertical, dip minus 90 degrees.

Metres (m)	Feet (ft)	Description
0 – 1.8 m	0' – 6'	Casing
1.8 – 6.4 m	6' – 21'	Granodiorite
6.4 – 8.2 m	21' – 27'	Andesite dyke
8.2 – 12.0 m	27' – 39 ½'	Granodiorite, fresh
12.0 – 12.5 m	39 ½' – 41'	Andesite dyke
12.5 – 63.4 m	41' – 208'	Granodiorite. From 152' – 159' epidote alteration in granodiorite, possibly steeply dipping fault at 155' where alteration is strongest.
63.4 – 65.2 m	208' – 214'	Andesite dyke with small mafix phenocrysts.
65.2 – 82.3 m	214' – 270'	Granodiorite – patches of epidote alteration.
82.3 – 88.4 m	270' – 290'	Granodiorite, sheared platy chloritic with hairline calcite veinlets to 290'
88.4 – 88.5 m	290' – 290'+3"	Vein, hangingwall vein, sheared, poor quality, a few flecks of pyrite, aplite.
88.5 - 100.3 m	290'+3" – 329'	At 292' (89.0 m) fractures in aplite are lightly coated with iron rust and traces of malachite. Hole stopped due to mechanical difficulties with drill before passing through aplite to expected foot wall vein. Hole stopped at 329' (100.3 m).

No core samples taken for assay.

FOOTAGES OF CORE IN EACH BOX – DAR DDH 05, 2005

Box 1	0' – 26'
Box 2	26' – 44'
Box 3	44' – 61'
Box 4	61' – 76 ½'
Box 5	76 ½' – 93'
Box 6	93' – 110'
Box 7	110' – 127 ½'
Box 8	127 ½' – 145'
Box 9	145' – 163'
Box 10	163' – 179'
Box 11	179' – 194'
Box 12	194' – 211'
Box 13	211' – 227'
Box 14	227' – 249'
Box 15	249' – 269'
Box 16	269' – 288'
Box 17	288' – 305'
Box 18	305' – 322 ½'
Box 19	322 ½' – 329'



ALS Chemex

EXCELLENCE IN ANALYTICAL CHEMISTRY

ALS Canada Ltd

212 Brooksbank Avenue
North Vancouver BC V7J 2C1

Phone 604 984 0221 Fax 604 984 0218 www.alschemex.com

To BURTON CONSULTING INC.
1408 7TH AVE W
NEW WESTMINSTER BC V3M 2K3

Page: 1
Finalized Date: 7-AUG-2005
This copy reported on 8-NOV-2006
Account: CM

CERTIFICATE VA05061198

Project: DAR

P.O. No.

This report is for 62 Drill Core samples submitted to our lab in Vancouver, BC, Canada on 25-JUL-2005.

The following have access to data associated with this certificate:

ALEX BURTON

A BURTON

SAMPLE PREPARATION

ALS CODE	DESCRIPTION
WEI-21	Received Sample Weight
BAG-01	Bulk Master for Storage
PUL-32	Pulverize 1000g to 85% < 75 um
SPL-21	Split sample - riffle splitter
CRU-31	Fine crushing - 70% <2mm
LOG-22	Sample login - Rcd w/o BarCode

ANALYTICAL PROCEDURES

ALS CODE	DESCRIPTION	INSTRUMENT
Ag-AA45	Trace Ag - aqua regia/AAS	AAS
Ag-AA46	Ore grade Ag - aqua regia/AA	AAS
Au-AA25	Ore Grade Au 30g FA AA finish	AAS

To BURTON CONSULTING INC.
ATTN: ALEX BURTON
1408 7TH AVE W
NEW WESTMINSTER BC V3M 2K3

This is the Final Report and supersedes any preliminary report with this certificate number. Results apply to samples as submitted. All pages of this report have been checked and approved for release.

Signature: 

Keith Rogers, Executive Manager Vancouver Laboratory



ALS Chemex

EXCELLENCE IN ANALYTICAL CHEMISTRY

ALS Canada Ltd.

212 Brooksbank Avenue
North Vancouver BC V7J 2C1
Phone: 604 984 0221 Fax: 604 984 0218 www.alschemex.com

To: BURTON CONSULTING INC.
1408 7TH AVE W
NEW WESTMINSTER BC V3M 2K3

Page: 2 - A
Total # Pages: 3 (A)
Finalized Date: 7-AUG-2005
Account: CM

Project: DAR

CERTIFICATE OF ANALYSIS VA05061198

Sample Description	Method Analyte Units LOR	WEI-21	Au-AA25	Au-AA25	Au-AA25	Ag-AA45	Ag-AA45
		Recvd Wt. kg	Au ppm	Au Check ppm	Au Check ppm	Ag ppm	Ag ppm
		0.02	0.01	0.01	0.01	0.2	1
DDH01-67-70		3.46	0.01			<0.2	
DDH01-72-73		2.12	0.60			0.6	
DDH01-150-152 1/2		2.78	0.06			0.3	
DDH02-92-101		5.88	0.02			0.2	
DDH02-131-136		3.42	0.02			<0.2	
DDH02-149-151		1.32	<0.01			<0.2	
DDH03-151-156		3.66	0.01			<0.2	
DDH03-78-81 1/2		0.68	17.85			11.7	
DDH03-81 1/2-82 1/2		1.98	0.46			3.8	
DDH03-108 1/2-110 1/2		0.28	0.17			10.7	
DDH04-114 1/2-117		3.38	4.04			15.0	
DDH04-117-119		3.26	5.24			13.4	
DDH04-139 1/2-141		1.50	0.11			1.2	
T-2005-01		2.52	55.0	50.6		>100	1220
T-2005-02		4.64	16.55	15.20		>100	377
T-2005-03		1.94	3.60			78.6	
T-2005-04		2.90	0.16			5.5	
T-2005-05		3.72	1.78			5.6	
T-2005-06		3.48	1.04			1.6	
T-2005-07		6.36	23.0			>100	539
T-2005-08		6.78	8.14	7.13		76.4	
T-2005-09		6.58	8.17	7.90		>100	290
T-2005-10		5.88	1.75	1.88		7.7	
T-2005-11		6.88	4.15			12.3	
T-2005-12A		4.90	0.57			6.8	
T-2005-12B		6.78	20.8	22.0		77.2	
T-2005-12C		4.78	0.29			2.4	
T-2005-13		5.44	1.84	3.65	1.84	7.4	
T-2005-14		5.32	6.66			14.7	
T-2005-15		6.72	3.37	4.08	4.53	7.6	
T-2005-16A		3.62	0.04			0.4	
T-2005-16B		5.80	3.09			3.7	
T-2005-16C		4.46	0.03			0.2	
T-2005-17		6.46	9.96	10.90		10.8	
T-2005-18A		5.28	5.93			>100	353
T-2005-18B		3.30	3.13			16.4	
T-2005-19		5.02	0.10			0.8	
T-2005-20A		2.72	0.05			<0.2	
T-2005-20B		2.64	2.56	2.49		12.9	
T-2005-20C		1.32	0.04			<0.2	



ALS Chemex

EXCELLENCE IN ANALYTICAL CHEMISTRY

ALS Canada Ltd

212 Brooksbank Avenue
North Vancouver BC V7J 2C1

Phone 604 984 0221 Fax 604 984 0218 www.alschemex.com

To: BURTON CONSULTING INC.
1408 7TH AVE W
NEW WESTMINSTER BC V3M 2K3

Page: 3 - A
Total # Pages: 3 (A)
Finalized Date: 7-AUG-2005
Account: CM

Project: DAR

CERTIFICATE OF ANALYSIS VA05061198

Sample Description	Method Analyte Units LOR	WEI-21 Recvd Wt kg 0.02	Au-AA25 Au ppm 0.01	Au-AA25 Au Check ppm 0.01	Au-AA25 Au Check ppm 0.01	Ag-AA45 Ag ppm 0.2	Ag-AA46 Ag ppm 1
T-2005-21		4.28	0.33			9.1	
T-2005-22		6.04	0.35			5.1	
T-2005-23		5.26	0.35			3.7	
T-2005-24		3.74	0.60			4.6	
T-2005-25		5.96	0.92			2.1	
T-2005-26		8.04	0.54			2.9	
T-2005-27		5.46	1.11			6.1	
T-2005-28		5.86	0.36			1.6	
T-2005-29		5.16	3.00	2.96		6.3	
T-2005-30		4.66	1.05			4.1	
T-2005-31		3.90	5.62	6.05		2.7	
T-2005-32		4.78	1.45			0.6	
T-2005-34		5.02	1.45			2.1	
T-2005-35		3.98	4.70	4.27		4.5	
T-2005-36		4.08	0.27			0.7	
T-2005-37A		4.58	0.16			0.6	
T-2005-37B		4.30	0.13			0.2	
T-2005-37C		1.74	0.07			<0.2	
T-2005-38		3.42	0.03			0.4	
T-2005-39		3.32	0.23			4.3	
T-2005-40		2.44	2.22	2.14		2.3	
T-2005-41		2.60	1.54			26.9	

APPENDIX III

INVOICES FOR WORK DONE IN 2005 by Burton Consulting Inc.

Expense report 1A	\$ 747.26
Expense report 1	696.07
Expense Report 2	9,252.36
Expense Report 3	1,262.83
Expense Report 4	24,293.53
Expense Report 5	12,354.24
Expense Report 6	3,317.35
Expense Report 7	4,994.29
Expense Report 8	10,198.12
Expense Report 9	3,676.43
Expense report 10	11,475.77
Expense Report 11	4,720.31
Expense Report 12	3,678.28
Expense Report 13	3,540.31
Expense Report 14	6,840.82
Expense Report 15	3,314.75
Expense Report 16	4,104.01
Expense Report 17	1,500.00
Expense Report 19	4,500.00

1. INVOICE FOR ADAM DIAMOND DRILLING IN 2005

Expense Report 18	<u>37,697.04</u>
TOTAL	\$ 152,163.77

Expense Report #1A

Name Alex Burton

Company - Burton Consulting Inc.

Date - Mar. '05

Project Dardanelle

DATE	Meals	Fuel	Accomm	Lab/wages	Maps	Supplies	DESCRIPTION	GST	Total
Mar. 15/05					\$699.97		Terracad Ltd.	\$47.29	\$747.26
									\$0.00
									\$0.00
									\$0.00
									\$0.00
									\$0.00
									\$0.00
									\$0.00
									\$0.00
									\$0.00
									\$0.00
									\$0.00
									\$0.00
									\$0.00
									\$0.00
									\$0.00
									\$0.00
									\$0.00
									\$0.00
									\$0.00
									\$0.00
									\$0.00
Total	\$0.00	\$0.00	\$0.00	\$0.00	\$699.97	\$0.00			
Allocate to Project:									
Approved By:									
TOTAL								\$47.29	\$747.26

Expense Report #1

Name Alex Burton

Company - Burton Consulting Inc.

Date - May, 2005

Project Dardanelle

DATE	Meals	Fuel	Accomm	Lab/wages	Services	Supplies	DESCRIPTION	GST	Total
May 16/05					\$85.49		N&J Services-auto	\$5.59	\$91.08
						\$32.09	Cdn.Tire	\$2.10	\$34.19
May 21/05						\$61.75	Rona	\$4.04	\$65.79
						\$24.94	Lordco Parts	\$1.63	\$26.57
May 22/05	\$2.69						Burger King	\$0.19	\$2.88
	\$35.76						Esso	\$2.32	\$38.08
			\$55.08				Round up Motel	\$3.57	\$58.65
	\$20.08						Cariboo Lodge-food	\$1.27	\$21.35
	\$16.03						Clinton Budget foods		\$16.03
May 23/05	\$6.76						Cordial Restaurant	\$0.47	\$7.23
		\$41.03					Super Save Gas	\$2.87	\$43.90
	\$8.64						Oscar's Cariboo - snack	\$0.61	\$9.25
	\$42.90						Husky Mohawk	\$3.00	\$45.90
	\$12.00						Quesnel Drive-in		\$12.00
	\$1.84	\$25.58					Shell Canada	\$1.92	\$29.34
		\$34.62					Petro Canada	\$2.33	\$36.95
		\$41.00					Husky Mohawk	\$2.87	\$43.87
			\$82.50				Aspen Motor Inn	\$5.25	\$87.75
	\$23.75						Aspen Motor Inn-food	\$1.51	\$25.26
									\$0.00
									\$0.00
									\$0.00
Total	\$170.45	\$142.23	\$137.58	\$0.00	\$85.49	\$118.78			
Allocate to Project:									
Approved By:							TOTAL	\$41.54	\$696.07

Expense Report #2

Name Alex Burton

Company - Burton Consulting Inc.

Date - May, 2005

Project Dardanelle

DATE	Meals	Fuel	Accomm	Lab/wages	Services	Supplies	DESCRIPTION	GST	Total
May 24/05	\$9.70						Aspen Motor Inn-food	\$0.60	\$10.30
		\$39.22					Petro Canada	\$2.75	\$41.97
		\$101.81					Tempo Gas	\$7.13	\$108.94
		\$27.10					Tempo Gas	\$1.90	\$29.00
May 02/05					\$7,559.00		T.Montague-bridge bldg	\$529.13	\$8,088.13
May 24/05				\$180.00			N.Goodlad 9hrs@\$20/hr		\$180.00
					\$150.00		B.McRae 2 daysATV		\$150.00
				\$300.00			D.Ethier-clm staking		\$300.00
	\$25.24						Best Western	\$1.56	\$26.80
May 25/05						\$69.07	Cdn. Tire	\$4.52	\$73.59
	\$41.37						Best Western	\$3.19	\$44.56
	\$1.60						Tim Horton's	\$0.11	\$1.71
	\$2.69						Tim Horton's	\$0.19	\$2.88
	\$3.49	\$15.42					Chevron	\$1.32	\$20.23
	\$15.90						Boston Pizza	\$1.04	\$16.94
May 26/05		\$61.10					Chevron	\$4.28	\$65.38
		\$23.05					Chevron	\$1.61	\$24.66
		\$7.18					Chevron	\$0.50	\$7.68
	\$7.75						Northern Motor - meal	\$0.47	\$8.22
	\$42.32						Safeway - food	\$0.35	\$42.67
	\$2.99						McDonald's	\$0.21	\$3.20
	\$5.50						Cafenara		\$5.50
Total	\$158.55	\$274.88	\$0.00	\$480.00	\$7,709.00	\$69.07			
Allocate to Project:									
Approved By:							TOTAL	\$560.86	\$9,252.36

Expense Report #3

Name Alex Burton

Company - Burton Consulting Inc.

Date - May, 2005

Project Dardanelle

DATE	Meals	Fuel	Accomm	Lab/wages	Services	Supplies	DESCRIPTION	GST	Total
May 26/05					\$227.34		Hawkair - Cathy	\$15.92	\$243.26
May 27/05					\$401.95		Terrace Totem-repairs1/2	\$26.37	\$428.32
						\$2.33	Spee Dee	\$0.16	\$2.49
						\$77.67	Ind.Ind. Supply	\$5.26	\$82.93
	\$12.26						Northern Inn	\$0.74	\$13.00
	\$25.01						Northern Inn	\$1.27	\$26.28
May 28/05						\$4.39	Rona	\$0.29	\$4.68
						\$78.94	Rona	\$5.16	\$84.10
						\$1.55	Terrace Totem	\$0.11	\$1.66
	\$4.98						Denny's Rest.	\$0.28	\$5.26
						\$23.53	Cdn. Tire	\$1.54	\$25.07
May 29/05		\$103.72					Chevron	\$7.18	\$110.90
	\$16.40						The BI	\$0.68	\$17.08
May 30/05	\$119.53						Save-on-Foods	\$3.94	\$123.47
	\$5.99						Copperside Foods	\$0.42	\$6.41
					\$0.93		Terrace Airport parking	\$0.07	\$1.00
						\$2.14	Zellers	\$0.14	\$2.28
	\$2.69						Tim Horton's	\$0.19	\$2.88
	\$46.65						Golden Flame	\$2.81	\$49.46
						\$30.19	Ind.Ind. Supply	\$2.11	\$32.30
									\$0.00
									\$0.00
Total	\$233.51	\$103.72	\$0.00	\$0.00	\$630.22	\$220.74			
Allocate to Project:									
Approved By:							TOTAL	\$74.64	\$1,262.83

Expense Report #4

Name Alex Burton

Company - Burton Consulting Inc.

Date - May, 2005

Project Dardanelle

DATE	Meals	Fuel	Accomm	Lab/wages	Services	Supplies	DESCRIPTION	GST	Total
May 30/05				\$150.00			C.Burton 1 day	\$10.50	\$160.50
May 31/05		\$115.00					Petro Canada	\$8.43	\$123.43
	\$11.76						Copperside Foods	\$0.77	\$12.53
	\$43.14						Safeway - food	\$1.11	\$44.25
	\$28.37						Northern Motor - meals	\$3.19	\$31.56
				\$2,310.00			W.Foote 70 hrs@\$33	\$161.70	\$2,471.70
				\$2,607.00			G.Chinn 79 hrs@\$33	\$182.49	\$2,789.49
					\$9,825.00		DJ McKay Excav& Cat	\$687.75	\$10,512.75
				\$75.00			C.Burton 1/2 day	\$5.25	\$80.25
				\$4,500.00			A.Burton 10days@\$450	\$315.00	\$4,815.00
					\$300.00		ATVrental 2x\$150 1day	\$21.00	\$321.00
					\$125.00		TruckTrailer 1wk@\$125	\$8.75	\$133.75
					\$100.00		Tools @ \$100/wk	\$7.00	\$107.00
					\$25.00		Magnetometer \$25/day	\$1.75	\$26.75
					\$121.72		RedTruck 608.61@\$.20	\$8.52	\$130.24
					\$400.00		RedTruck 8 days@\$50	\$28.00	\$428.00
									\$0.00
									\$0.00
					\$377.60		WhTruck 1887.98km	\$26.43	\$404.03
					\$500.00		WhTruck 10days@50	\$35.00	\$535.00
					\$100.00		ATVtrailers2@\$50	\$7.00	\$107.00
					\$990.00		ATVrental2x\$55x9days	\$69.30	\$1,059.30
Total	\$83.27	\$115.00	\$0.00	\$9,642.00	\$12,864.32	\$0.00			
Allocate to Project:									
Approved By:									
TOTAL								\$1,588.94	\$24,293.53

Expense Report #5

Name Alex Burton

Company - Burton Consulting Inc.

Date - June, 2005

Project Dardanelle

DATE	Meals	Fuel	Accomm	Lab/wages	Services	Supplies	DESCRIPTION	GST	Total
June 01/05				\$150.00			C.Burton 1 day	\$10.50	\$160.50
				\$2,250.00			B.McRae 3mth Mgmt		\$2,250.00
				\$2,250.00			J.Georgilas 3mth Exp		\$2,250.00
	\$85.82						Safeway-groceries	\$2.19	\$88.01
						\$14.76	SpeeDee -office	\$0.97	\$15.73
				\$450.00			A.Burton 1 day	\$31.50	\$481.50
June 02/05				\$150.00			C.Burton 1 day	\$10.50	\$160.50
				\$450.00			A.Burton 1 day	\$31.50	\$481.50
						\$20.97	1st Choice Blders	\$1.37	\$22.34
June 03/05				\$75.00			C.Burton 1/2 day	\$5.25	\$80.25
				\$450.00			A.Burton 1 day	\$31.50	\$481.50
	\$100.08						Safeway-groceries	\$1.95	\$102.03
June 04/05				\$450.00			A.Burton 1 day	\$31.50	\$481.50
		\$42.69					Safeway-gas	\$2.99	\$45.68
June 05/05	\$67.40						Safeway - groceries	\$1.46	\$68.86
				\$450.00			A.Burton 1 day	\$31.50	\$481.50
					\$2,512.50		J.McKay-excav & cat	\$175.88	\$2,688.38
				\$1,353.00			G.Chinn 41hrs@\$33	\$94.71	\$1,447.71
June 06/05				\$450.00			A.Burton 1 day	\$31.50	\$481.50
				\$75.00			C.Burton 1/2 day	\$5.25	\$80.25
					\$5.00		fax - 5 pages		\$5.00
									\$0.00
Total	\$253.30	\$42.69	\$0.00	\$9,003.00	\$2,517.50	\$35.73			
Allocate to Project:									
Approved By:							TOTAL	\$502.02	\$12,354.24

Expense Report #6

Name Alex Burton

Company - Burton Consulting Inc.

Date - June, 2005

Project Dardanelle

DATE	Meals	Fuel	Accomm	Lab/wages	Services	Supplies	DESCRIPTION	GST	Total
June 07/05				\$450.00			A.Burton 1 day	\$31.50	\$481.50
				\$150.00			C.Burton 1 day	\$10.50	\$160.50
	\$32.02						Safeway-groceries	\$0.54	\$32.56
						\$14.92	Ind.Ind.Supply-hose	\$0.98	\$15.90
					\$3.00		fax - 3 pages		\$3.00
June 08/05				\$450.00			A.Burton 1 day	\$31.50	\$481.50
				\$75.00			C.Burton 1/2 day	\$5.25	\$80.25
		\$95.87					Safeway- gas	\$6.71	\$102.58
						\$23.87	Rona	\$1.56	\$25.43
June 09/05				\$450.00			A.Burton 1 day	\$31.50	\$481.50
	\$77.25						Safeway	\$2.17	\$79.42
June 10/05				\$450.00			A.Burton 1 day	\$31.50	\$481.50
				\$150.00			C.Burton 1 day	\$10.50	\$160.50
	\$37.85						BistroL'Ambiance	\$2.30	\$40.15
June 11/05				\$450.00			A.Burton 1 day	\$31.50	\$481.50
				\$150.00			C.Burton 1 day	\$10.50	\$160.50
		\$46.15					Chevron	\$2.91	\$49.06
									\$0.00
									\$0.00
									\$0.00
									\$0.00
									\$0.00
									\$0.00
Total	\$147.12	\$142.02	\$0.00	\$2,775.00	\$3.00	\$38.79			
Allocate to Project:									
Approved By:							TOTAL	\$211.42	\$3,317.35

Expense Report #7

Name Alex Burton

Company - Burton Consulting Inc.

Date - June, 2005

Project Dardanelle

DATE	Meals	Fuel	Accomm	Lab/wages	Services	Supplies	DESCRIPTION	GST	Total
June 12/05				\$75.00			C.Burton 1/2 day	\$5.25	\$80.25
	\$5.97						Walmart-honey		\$5.97
	\$41.11						Safeway-groceries	\$0.48	\$41.59
	\$11.77						A&W - lunch	\$0.82	\$12.59
						\$87.84	Cdn. Tire	\$5.75	\$93.59
				\$1,188.00			G.Chinn 36hrs@\$33	\$83.16	\$1,271.16
June 13/05				\$450.00			A.Burton 1 day	\$31.50	\$481.50
						\$23.02	Cdn. Tire	\$1.54	\$24.56
June 14/05				\$450.00			A.Burton 1 day	\$31.50	\$481.50
		\$20.59					Copperside - gas	\$1.44	\$22.03
		\$42.53					Copperside - gas	\$2.98	\$45.51
						\$374.49	Emco Corp	\$24.50	\$398.99
						\$88.51	BCI-layflat hose		\$88.51
June 15/05				\$450.00			A.Burton 1 day	\$31.50	\$481.50
				\$75.00			C.Burton 1/2 day	\$5.25	\$80.25
	\$61.22						Safeway-groceries	\$1.59	\$62.81
June 16/05				\$450.00			A.Burton 1 day	\$31.50	\$481.50
				\$150.00			C.Burton 1 day	\$10.50	\$160.50
June 17/05				\$450.00			A.Burton 1 day	\$31.50	\$481.50
				\$75.00			C.Burton 1/2 day	\$5.25	\$80.25
		\$22.50					Safeway - gas	\$1.58	\$24.08
						\$88.22	Walmart-supplies	\$5.93	\$94.15
Total	\$120.07	\$85.62	\$0.00	\$3,813.00	\$0.00	\$662.08			
Allocate to Project:									
Approved By:							TOTAL	\$313.52	\$4,994.29

Expense Report #8

Name Alex Burton

Company - Burton Consulting Inc.

Date - June, 2005

Project Dardanelle

DATE	Meals	Fuel	Accomm	Lab/wages	Services	Supplies	DESCRIPTION	GST	Total
June 18/05				\$450.00			A.Burton 1 day	\$31.50	\$481.50
				\$150.00			C.Burton 1 day	\$10.50	\$160.50
June 19/05					\$4,295.00		J.McKay Excav & Cat	\$300.65	\$4,595.65
				\$1,749.00			G.Chinn 53 hrs@\$33	\$122.43	\$1,871.43
June 20/05				\$75.00			C.Burton 1/2 day	\$5.25	\$80.25
				\$450.00			A.Burton 1 day	\$31.50	\$481.50
					\$1.38		Telephone-Victoria	\$0.10	\$1.48
		\$46.11					Chevron	\$3.04	\$49.15
June 21/05				\$450.00			A.Burton 1 day	\$31.50	\$481.50
		\$79.44					Chevron	\$5.56	\$85.00
	\$73.81						Safeway-groceries	\$0.70	\$74.51
						\$28.83	Wal-Mart-batteries	\$1.89	\$30.72
June 22/05				\$450.00			A.Burton 1 day	\$31.50	\$481.50
				\$75.00			C.Burton 1/2 day	\$5.25	\$80.25
						\$32.09	Wal-Mart-batteries	\$2.23	\$34.32
	\$15.57						Copperside-foods	\$1.09	\$16.66
			\$1,100.00				CopperRiver Motel	\$70.00	\$1,170.00
June 23/05						\$20.84	Ind.Ind. Supply-file	\$1.36	\$22.20
									\$0.00
									\$0.00
									\$0.00
									\$0.00
Total	\$89.38	\$125.55	\$1,100.00	\$3,849.00	\$4,296.38	\$81.76			
Allocate to Project:									
Approved By:							TOTAL	\$656.05	\$10,198.12

Expense Report #9

Name Alex Burton

Company - Burton Consulting Inc.

Date - June, 2005

Project Dardanelle

DATE	Meals	Fuel	Accomm	Lab/wages	Services	Supplies	DESCRIPTION	GST	Total
June 24/05				\$450.00			A.Burton 1 day	\$31.50	\$481.50
						\$18.17	Cdn. Tire	\$1.19	\$19.36
		\$42.86					Chevron	\$3.00	\$45.86
						\$8.86	Copperside IV	\$0.61	\$9.47
		\$21.93					Chevron	\$1.54	\$23.47
June 25/05				\$450.00			A.Burton 1 day	\$31.50	\$481.50
	\$4.98						A&W	\$0.35	\$5.33
	\$67.82						Safeway-groceries	\$2.22	\$70.04
	\$22.29						Save-on-foods	\$1.47	\$23.76
					\$0.93		Airport-parking	\$0.07	\$1.00
June 26/05				\$450.00			A.Burton 1 day	\$31.50	\$481.50
				\$75.00			C.Burton 1/2 day	\$5.25	\$80.25
						\$10.69	Cdn. Tire	\$0.70	\$11.39
				\$1,171.50			G.Chinn 35.5hrs@\$33	\$82.01	\$1,253.51
June 27/05				\$450.00			A.Burton 1 day	\$31.50	\$481.50
				\$150.00			C.Burton 1 day	\$10.50	\$160.50
	\$9.81						Artful Cup-2 lunches	\$0.69	\$10.50
						\$18.40	Terrace Steel	\$1.20	\$19.60
						\$15.69	Cdn. Tire	\$0.70	\$16.39
									\$0.00
									\$0.00
									\$0.00
Total	\$104.90	\$64.79	\$0.00	\$3,196.50	\$0.93	\$71.81			
Allocate to Project:									
Approved By:							TOTAL	\$237.50	\$3,676.43

Expense Report #10

Name Alex Burton

Company - Burton Consulting Inc.

Date - June, 2005

Project Dardanelle

DATE	Meals	Fuel	Accomm	Lab/wages	Services	Supplies	DESCRIPTION	GST	Total
June 28/05				\$450.00			A.Burton 1 day	\$31.50	\$481.50
				\$150.00			C.Burton 1 day	\$10.50	\$160.50
					\$100.00		B.McRae-radiophone		\$100.00
					\$250.00		B.McRae-Coresplitter		\$250.00
		\$9.90					Cda Safeway-gas	\$0.69	\$10.59
		\$47.18					Safeway-gas	\$3.30	\$50.48
						\$4.24	Rona	\$0.28	\$4.52
						\$142.43	Neid Enterprises	\$9.21	\$151.64
					\$1,495.00		J.McKay-Excav & Cat	\$104.65	\$1,599.65
June 29/05				\$75.00			C.Burton 1/2 day	\$5.25	\$80.25
				\$660.00			G.Chinn 20hrs.@\$33	\$46.20	\$706.20
					\$1,450.00		Redtruck 29day@\$50	\$101.50	\$1,551.50
					\$225.32		Redtruck 1126.61km	\$15.77	\$241.09
									\$0.00
					\$1,450.00		Whtruck 29day@50	\$101.50	\$1,551.50
					\$341.69		Whtruck 1708.45km	\$23.92	\$365.61
					\$3,300.00		ATVrent2x\$55x30d	\$231.00	\$3,531.00
					\$400.00		Tools@\$100/wk	\$28.00	\$428.00
									\$0.00
					\$197.89		Internet 1/2mth+instal	\$13.85	\$211.74
									\$0.00
									\$0.00
Total	\$0.00	\$57.08	\$0.00	\$1,335.00	\$9,209.90	\$146.67			
Allocate to Project:									
Approved By:							TOTAL	\$727.12	\$11,475.77

* CORRECTED COPY

Expense Report #11

Name Alex Burton

Company - Burton Consulting Inc.

Date - July, 2005

Project Dardanelle

DATE	Meals	Fuel	Accomm	Lab/wages	Services	Supplies	DESCRIPTION	GST	Total
July 01/05				\$750.00			B.McRae-Mgmt fee		\$750.00
				\$750.00			J.Georgilas-Exp.fee		\$750.00
				\$66.00			G.Chinn 2 hrs@\$33	\$4.62	\$70.62
July 05/05	\$66.69						Safeway-groceries	\$1.16	\$67.85
					\$124.47		KalTire	\$8.15	\$132.62
		\$42.13					Temp Gas	\$2.95	\$45.08
July 06/05		\$32.06					Husky Mohawk	\$2.24	\$34.30
				\$264.00			G.Chinn 8 hrs. @\$33	\$18.48	\$282.48
July 07/05				\$225.00			A.Burton 1/2 day	\$15.75	\$240.75
				\$75.00			C.Burton 1/2 day	\$5.25	\$80.25
July 08/05	\$13.11						Copperside foods	\$0.92	\$14.03
July 09/05				\$450.00			A.Burton 1 day	\$31.50	\$481.50
				\$150.00			C.Burton 1 day	\$10.50	\$160.50
				\$330.00			G.Chinn 10 hrs. @\$33	\$23.10	\$353.10
						\$32.01	Wal-Mart	\$1.63	\$33.64
July 10/05				\$450.00			A.Burton 1 day	\$31.50	\$481.50
				\$150.00			C.Burton 1 day	\$10.50	\$160.50
		\$35.21					Chevron	\$2.47	\$37.68
		\$55.84					Chevron	\$2.95	\$58.79
	\$115.56						Bavarian Inn-4 dins	\$7.00	\$122.56
	\$8.84						DQ-dessert	\$0.62	\$9.46
				\$330.00			G.Chinn 10 hrs. @\$33	\$23.10	\$353.10
Total	\$204.20	\$165.24	\$0.00	\$3,990.00	\$124.47	\$32.01			
Allocate to Project:									
Approved By:									
TOTAL								\$204.39	\$4,720.31

NOW - CORRECT AMOUNT

Expense Report #12

Name Alex Burton

Company - Burton Consulting Inc.

Date - July, 2005

Project Dardanelle

DATE	Meals	Fuel	Accomm	Lab/wages	Services	Supplies	DESCRIPTION	GST	Total
July 11/05				\$450.00			A.Burton 1 day	\$31.50	\$481.50
				\$150.00			C.Burton 1 day	\$10.50	\$160.50
	\$1.60						Tim Horton's	\$0.11	\$1.71
	\$21.72						Denny's Rest.	\$1.45	\$23.17
						\$110.38	Rona	\$7.22	\$117.60
	\$91.18						Northern Inn-4 dins	\$4.55	\$95.73
				\$330.00			G.Chinn 10 hrs@\$33	\$23.10	\$353.10
July 12/05		\$24.74					Safeway-gas	\$1.80	\$26.54
	\$74.27						Safeway-groceries	\$0.86	\$75.13
				\$330.00			G.Chinn 10 hrs@\$33	\$23.10	\$353.10
July 13/05				\$450.00			A.Burton 1 day	\$31.50	\$481.50
				\$150.00			C.Burton 1 day	\$10.50	\$160.50
				\$330.00			G.Chinn 10 hrs@\$33	\$23.10	\$353.10
July 14/05				\$450.00			A.Burton 1 day	\$31.50	\$481.50
				\$150.00			C.Burton 1 day	\$10.50	\$160.50
				\$330.00			G.Chinn 10 hrs@\$33	\$23.10	\$353.10
									\$0.00
									\$0.00
									\$0.00
									\$0.00
									\$0.00
									\$0.00
									\$0.00
Total	\$188.77	\$24.74	\$0.00	\$3,120.00	\$0.00	\$110.38			
Allocate to Project:									
Approved By:									
TOTAL								\$234.39	\$3,678.28

Expense Report #13

Name Alex Burton

Company - Burton Consulting Inc.

Date - July, 2005

Project Dardanelle

DATE	Meals	Fuel	Accomm	Lab/wages	Services	Supplies	DESCRIPTION	GST	Total
July 15/05				\$450.00			A.Burton 1 day	\$31.50	\$481.50
				\$150.00			C.Burton 1 day	\$10.50	\$160.50
				\$330.00			G.Chinn 10 hrs@\$33	\$23.10	\$353.10
				\$200.00			L.Pedro 10 hrs@\$20		\$200.00
	\$15.72						Copperside food	\$1.10	\$16.82
		\$55.81					Chevron	\$3.91	\$59.72
		\$35.38					Chevron	\$2.48	\$37.86
		\$23.30					Chevron	\$1.63	\$24.93
July 16/05				\$450.00			A.Burton 1 day	\$31.50	\$481.50
				\$150.00			C.Burton 1 day	\$10.50	\$160.50
				\$379.50			G.Chinn 11.5hrs@\$33	\$26.57	\$406.07
	\$29.36						Polly's Café	\$1.91	\$31.27
July 17/05	\$30.90						Best Western-breaky	\$1.95	\$32.85
	\$18.75						Copperside food	\$0.15	\$18.90
	\$70.56						Safeway-groceries	\$2.56	\$73.12
July 18/05				\$450.00			A.Burton 1 day	\$31.50	\$481.50
				\$150.00			C.Burton 1 day	\$10.50	\$160.50
				\$297.00			G.Chinn 9 hrs@\$33	\$20.79	\$317.79
	\$4.40						Copperside food	\$0.31	\$4.71
	\$3.85						Copperside food	\$0.27	\$4.12
						\$31.02	Napa Terrace	\$2.03	\$33.05
									\$0.00
Total	\$173.54	\$114.49	\$0.00	\$3,006.50	\$0.00	\$31.02			
Allocate to Project:									
Approved By:							TOTAL	\$214.76	\$3,540.31

Expense Report #14

Name Alex Burton

Company - Burton Consulting Inc.

Date - July, 2005

Project Dardanelle

DATE	Meals	Fuel	Accomm	Lab/wages	Services	Supplies	DESCRIPTION	GST	Total
July 19/05				\$225.00			A.Burton 1/2 day	\$15.75	\$240.75
				\$75.00			C.Burton 1/2 day	\$5.25	\$80.25
						\$121.84	Sight&Sound-photos	\$7.97	\$129.81
						\$8.55	Sight&Sound-photos	\$0.56	\$9.11
					\$176.26		JRMechanical	\$11.53	\$187.79
	\$15.00						Doris' Fish&Chips		\$15.00
July 20/05				\$225.00			A.Burton 1/2 day	\$15.75	\$240.75
				\$75.00			C.Burton 1/2 day	\$5.25	\$80.25
					\$400.00		M.Takhar-storage 2mth		\$400.00
July 21/05				\$225.00			A.Burton 1/2 day	\$15.75	\$240.75
				\$75.00			C.Burton 1/2 day	\$5.25	\$80.25
						\$152.44	Wal-Mart	\$9.32	\$161.76
	\$7.32						Tim Horton's	\$0.51	\$7.83
		\$28.52			\$228.16		Bandstra-samples	\$17.97	\$274.65
July 23/05			\$1,100.00				Copper River Motel	\$70.00	\$1,170.00
				\$75.00			C.Burton 1/2 day	\$5.25	\$80.25
					\$329.07		Neid Enterprise	\$21.47	\$350.54
July 25/05				\$297.00			G.Chinn 9hrs@\$33	\$20.79	\$317.79
				\$900.00			Redtruck18d@\$50	\$63.00	\$963.00
				\$182.02			910.11km@.20	\$12.74	\$194.76
				\$1,250.00			Whtruck 25d @\$50	\$87.50	\$1,337.50
				\$259.84			1299.2 km @ .20	\$18.19	\$278.03
Total	\$22.32	\$28.52	\$1,100.00	\$3,863.86	\$1,133.49	\$282.83			
Allocate to Project:									
Approved By:							TOTAL	\$409.80	\$6,840.82

Expense Report #15

Name Alex Burton

Company - Burton Consulting Inc.

Date - July, 2005

Project Dardanelle

DATE	Meals	Fuel	Accomm	Lab/wages	Services	Supplies	DESCRIPTION	GST	Total
July 25/05					\$2,750.00		ATVrent 2x\$55x25 d	\$192.50	\$2,942.50
					\$300.00		Tools @ \$100 pw	\$21.00	\$321.00
July 31/05					\$48.10		Internet- July	\$3.15	\$51.25
									\$0.00
									\$0.00
									\$0.00
									\$0.00
									\$0.00
									\$0.00
									\$0.00
									\$0.00
									\$0.00
									\$0.00
									\$0.00
									\$0.00
									\$0.00
									\$0.00
									\$0.00
									\$0.00
									\$0.00
									\$0.00
									\$0.00
									\$0.00
									\$0.00
									\$0.00
									\$0.00
Total	\$0.00	\$0.00	\$0.00	\$0.00	\$3,098.10	\$0.00			
Allocate to Project:									
Approved By:									
						TOTAL		\$216.65	\$3,314.75

Expense Report #19

Name Alex Burton

Company - Burton Consulting Inc.

Date - Oct.-Dec. '05

Project Dardanelle

DATE	Meals	Fuel	Accomm	Lab/wages	Services	Supplies	DESCRIPTION	GST	Total
Oct. 01/05					\$750.00		B.McRae Mgmt. Serv		\$750.00
					\$750.00		J.Georgilas Exp. Serv		\$750.00
									\$0.00
									\$0.00
									\$0.00
									\$0.00
									\$0.00
									\$0.00
Nov. 01/05					\$750.00		B.McRae Mgmt. Serv		\$750.00
					\$750.00		J.Georgilas Exp. Serv		\$750.00
									\$0.00
									\$0.00
									\$0.00
									\$0.00
Dec. 01/05					\$750.00		B.McRae Mgmt. Serv		\$750.00
					\$750.00		J.Georgilas Exp. Serv		\$750.00
									\$0.00
									\$0.00
									\$0.00
									\$0.00
									\$0.00
									\$0.00
Total	\$0.00	\$0.00	\$0.00	\$0.00	\$4,500.00	\$0.00			
Allocate to Project:									
Approved By:									
TOTAL								\$0.00	\$4,500.00



Yukon

N. W. T.

Alaska, U.S.A

BRITISH COLUMBIA

Alberta

FORT ST. JOHN

TRADE WINDS VENTURES INC.
DARDENELLES PROJECT

TERRACE

PRINCE RUPERT

PRINCE GEORGE

Alberta

Pacific Ocean

WHISTLER

KAMLOOPS

VANCOUVER

KALOWNA

CRANBROOK

PENTICTON

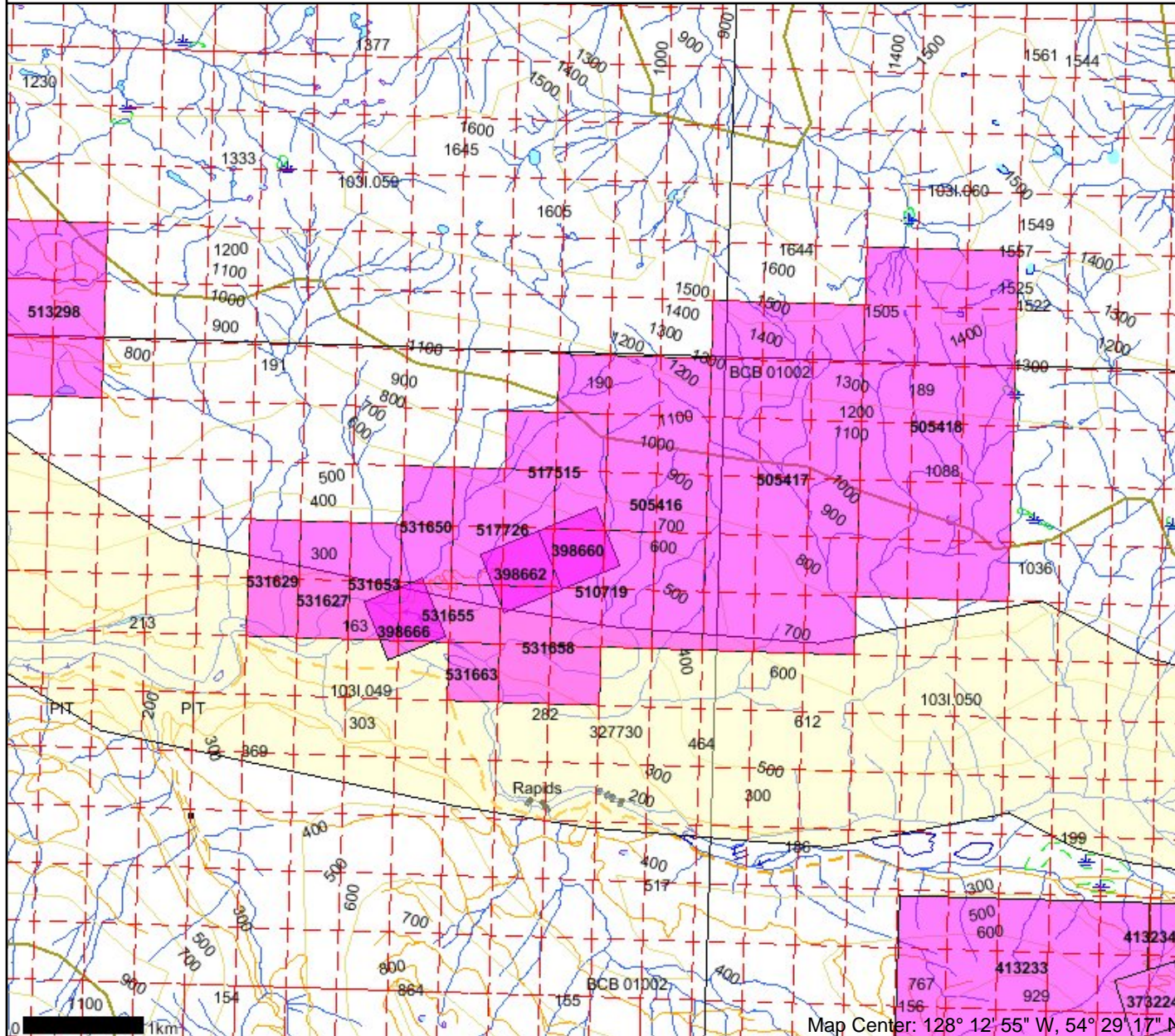
VICTORIA

USA

BURTON CONSULTING INC.	
TRADE WINDS VENTURES INC.	
DARDENELLES PROJECT	
LOCATION MAP	
Author: Alex Burton	
Drawing: TerraCAD	Date: December, 2004

Dar Claims

Legend

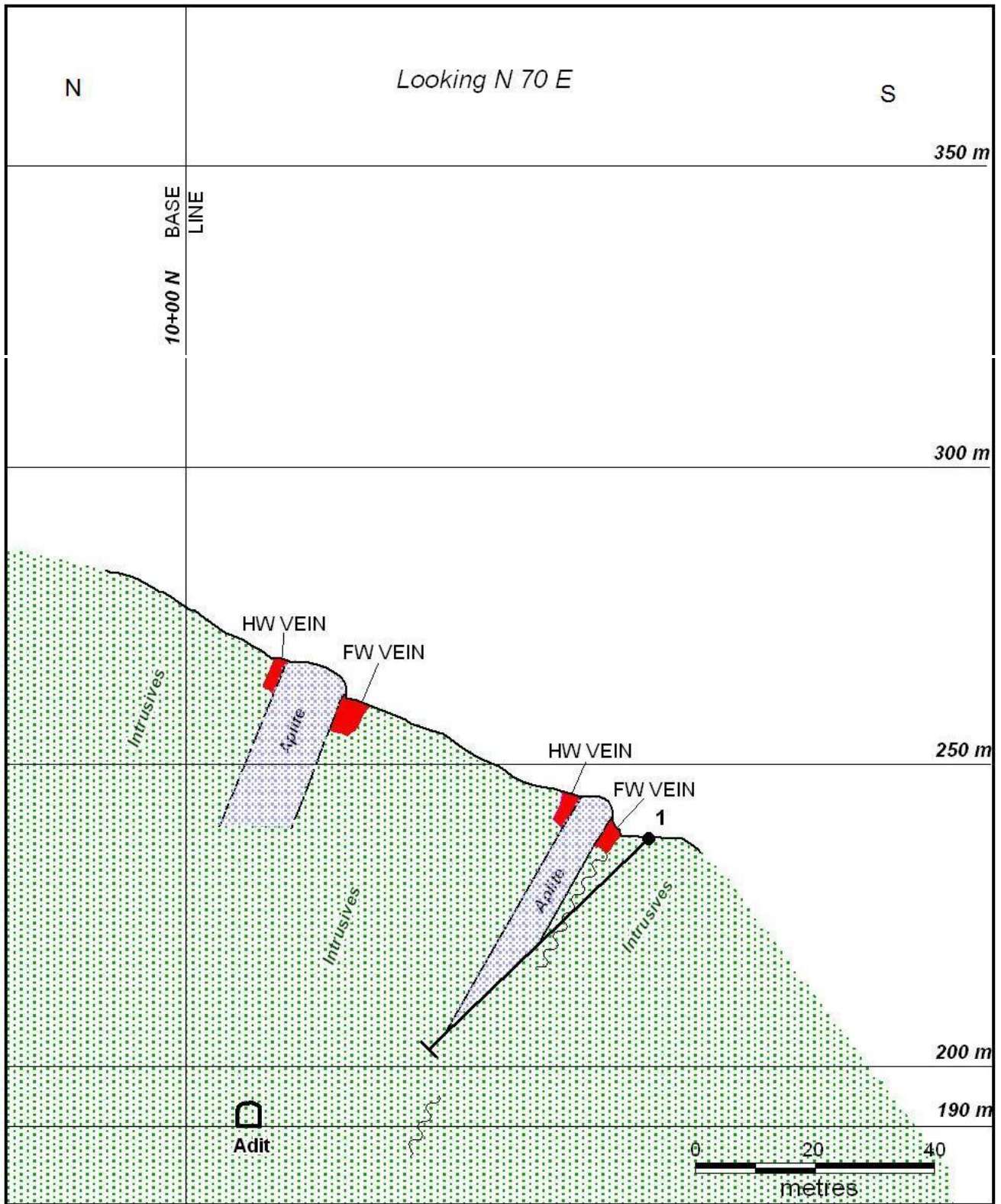


- Indian Reserves
- National Parks
- Parks
- Mineral Titles Grid
- Mineral Tenures
- Reserves (Sites)
- Placer Claim Designation
- Placer Lease Designation
- No Staking Reserve
- Conditional Reserve
- Release Required Reserve
- Surface Restriction
- Recreation Area
- Others
- BCGS Grid
- Contours (1:250K)
- Contour - Index
- Contour - Intermediate
- Area of Exclusion
- Area of Indefinite Contours
- Transportation - Points (TRIM)
- Helipad
- Transportation - Lines (TRIM)
- Airfield
- Airport
- Airstrip
- Airport/Abandoned
- Ferry Route
- Road (Gravel Undivided) - 1 Lane
- Road (Gravel Undivided) - 2 Lanes
- Road (Gravel Undivided) - U/C - 1 Lane
- Road (Gravel Undivided) - U/C - 2 Lanes
- Road (Paved Divided) - Not Elevated - 1 Lane Each Way
- Road (Paved Divided) - Not Elevated - 2 Lanes Each Way
- Road (Paved Divided) - U/C - Not Elevated - 2 Lanes Each Way
- Road (Paved Undivided) - Not Elevated - 1 Lane
- Road (Paved Undivided) - Not Elevated - 2 Lanes
- Road (Paved Undivided) - Not Elevated - 4 Lanes
- Road (Paved Undivided) - U/C - Not Elevated - 4 Lanes
- Road (Unimproved)
- Cut (Roadway)
- Embankment/Fill (Roadway)
- Trail
- Bridge - Foot
- Bridge - Trestle
- Tunnel
- Bridge
- Rail Line (Double Track)
- Rail Line (Multiple Track)
- Rail Line (Single Track)
- Rail Line - Abandoned Track

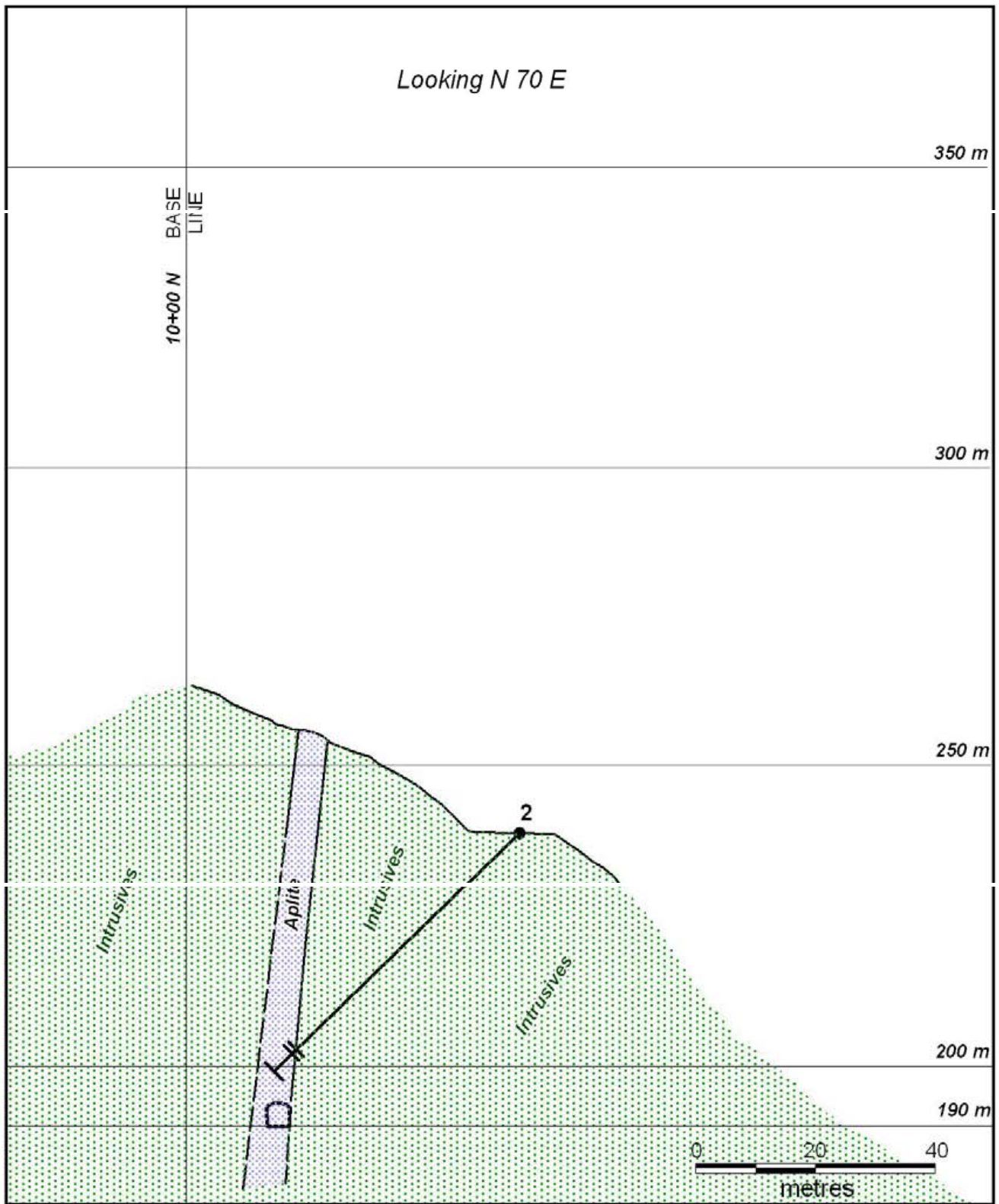
Scale: 1:50,000

DO NOT USE FOR NAVIGATION

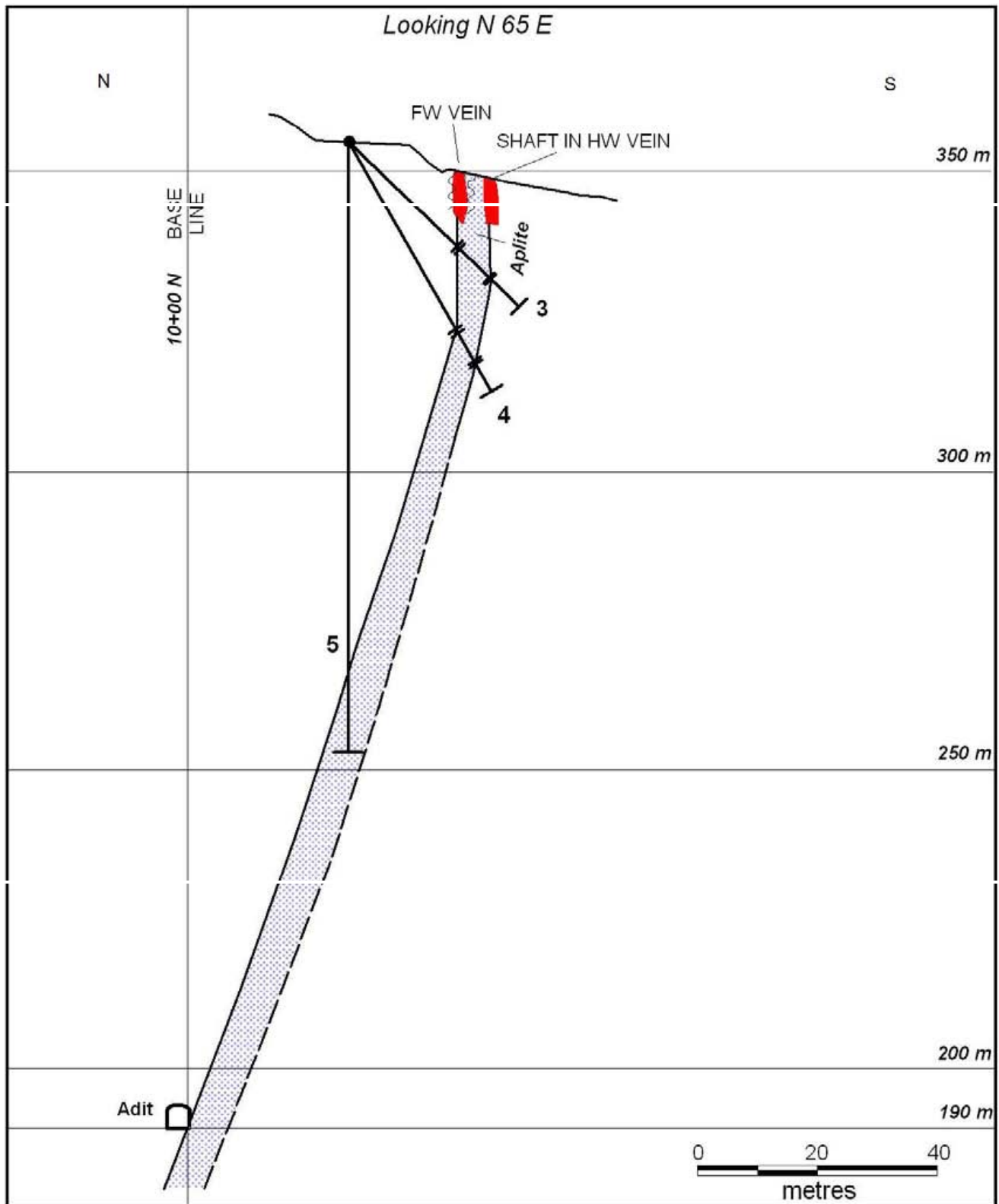
Map Center: 128° 12' 55" W, 54° 29' 17" N



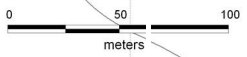
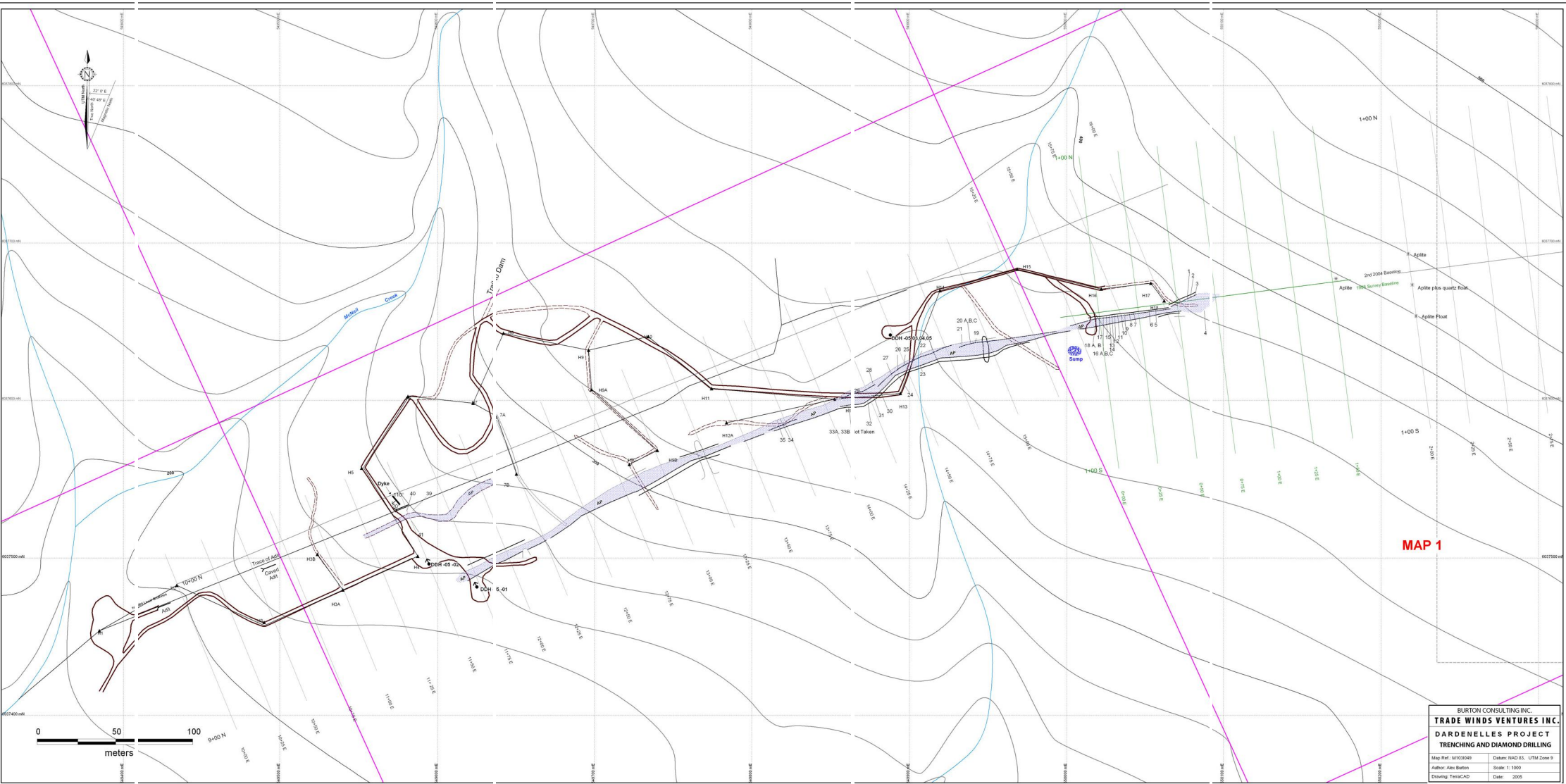
BURTON CONSULTING INC.	
TRADE WINDS VENTURES INC.	
DARDENELLES PROJECT	
DDH 01 - 2005	
Along Grid Line 11+75 E	
Map Ref.:	Datum:
Author: Alex Burton	Scale: 1: 1000
Drawing: TerraCAD	Date: March 22, 2005



BURTON CONSULTING INC.	
TRADE WINDS VENTURES INC.	
DARDENELLES PROJECT	
DDH 02 - 2005	
Along Grid Line 11+60 E	
Map Ref.:	Datum:
Author: Alex Burton	Scale: 1: 1000
Drawing: TerraCAD	Date: March 22, 2005



BURTON CONSULTING INC.	
TRADE WINDS VENTURES INC.	
DARDENELLES PROJECT	
DDH's 3,4,5 - 2005	
Along Grid Line 14+50 E	
Map Ref.:	Datum:
Author: Alex Burton	Scale: 1: 1000
Drawing: TerraCAD	Date: March 22, 2005



BURTON CONSULTING INC.
TRADE WINDS VENTURES INC.
DARENELLES PROJECT
TRENCHING AND DIAMOND DRILLING

Map Ref: M1030549	Datum: NAD 83, UTM Zone 9
Author: Alex Burton	Scale: 1:1000
Drawing: TrenchCAD	Date: 2005