

**REPORT**

**PROSPECTING PROGRAM**

on the

**J-2, STU 1, NMG MINERAL CLAIMS**

Keithley Creek Area  
Cariboo Mining Division

NTS Map No. 93A083

for

**NOBLE METAL GROUP INCORPORATED**

1520 - 1100 Melville Street  
Vancouver, British Columbia  
V6E 4A6

Event Number 4078106

by

**WGT CONSULTANTS LTD.**

Vancouver, B.C.

June 22, 2006

**GEOLOGICAL SURVEY BRANCH**  
ASSOCIATED REPORT

**28-443**

**RECEIVED**  
JUN 30 2006  
Gold Commissioner's Office  
VANCOUVER, B.C.

## TABLE OF CONTENTS

	<u>Page</u>
<b>SUMMARY</b> .....	1
<b>INTRODUCTION</b> .....	2
<b>PROPERTY DESCRIPTION AND LOCATION</b> .....	2
<b>ACCESSIBILITY, CLIMATE, LOCAL RESOURCES, INFRASTRUCTURE AND PHYSIOGRAPHY</b> .....	7
<b>HISTORY</b> .....	9
<b>GEOLOGICAL SETTING</b> .....	10
Regional Geology .....	10
Local Geology .....	13
Property Geology .....	14
<b>PROSPECTING PROGRAM</b> .....	16
<b>CONCLUSIONS AND RECOMMENDATIONS</b> .....	17
<b>STATEMENT OF QUALIFICATIONS</b> .....	18
<b>REFERENCES</b> .....	19

## FIGURES

Figure 1	Location Map .....	5
Figure 2	Claim Map and Index Map .....	6
Figure 3	(a) Geologic Map .....	11
	(b) Geologic Section .....	12
Figure 4	Traverse Map .....	(at rear)

## APPENDICES

Appendix I	Assay Certificates
Appendix II	Statement of Expenditures

## **SUMMARY**

A prospecting program carried out during October 2005, on the J-2, STU 1, NMG 22, NMG 30, NMG 31, and NMG 33 mineral claims owned by Noble Metal Group Incorporated, was successful in the collection of a number of samples producing anomalous values in strontium, titanium and copper.

Further investigation consisting of detailed prospecting, mapping and sampling is therefore warranted and recommended.

Respectfully submitted,

A handwritten signature in black ink, appearing to read 'W. G. Timmins', written in a cursive style.

**W. G. Timmins, P.Eng.**

Vancouver, B.C.  
June 22, 2006

## **INTRODUCTION**

A two man crew, provided by Eventyr Holdings Ltd., carried out a prospecting program over portions of the J-1, J-2, STU-1, NMG 22, NMG 30, NMG 31, and NMG 33 mineral claims between October 12th to 22nd, 2005. The crew consisted of prospector L. Sostad and assistant C. Delorme.

## **PROPERTY DESCRIPTION AND LOCATION**

The property is located approximately 21 kilometres north-northeast of the community of Likely, in the Cariboo Mining Division of British Columbia, Canada, NTS 93A073, 93A083 centred approximately at latitude 52°47'N, longitude 121°29'W (Figures 1 and 2).

The property consists of 22 four post located claims containing 388 units and 50 located two post claims for a total of 438 units. The claims are contiguous and cover an area of approximately 10,950 hectares. The property has not been surveyed.

A list of the claims, tenure numbers and expiry dates are tabulated below and illustrated on Figure 2.

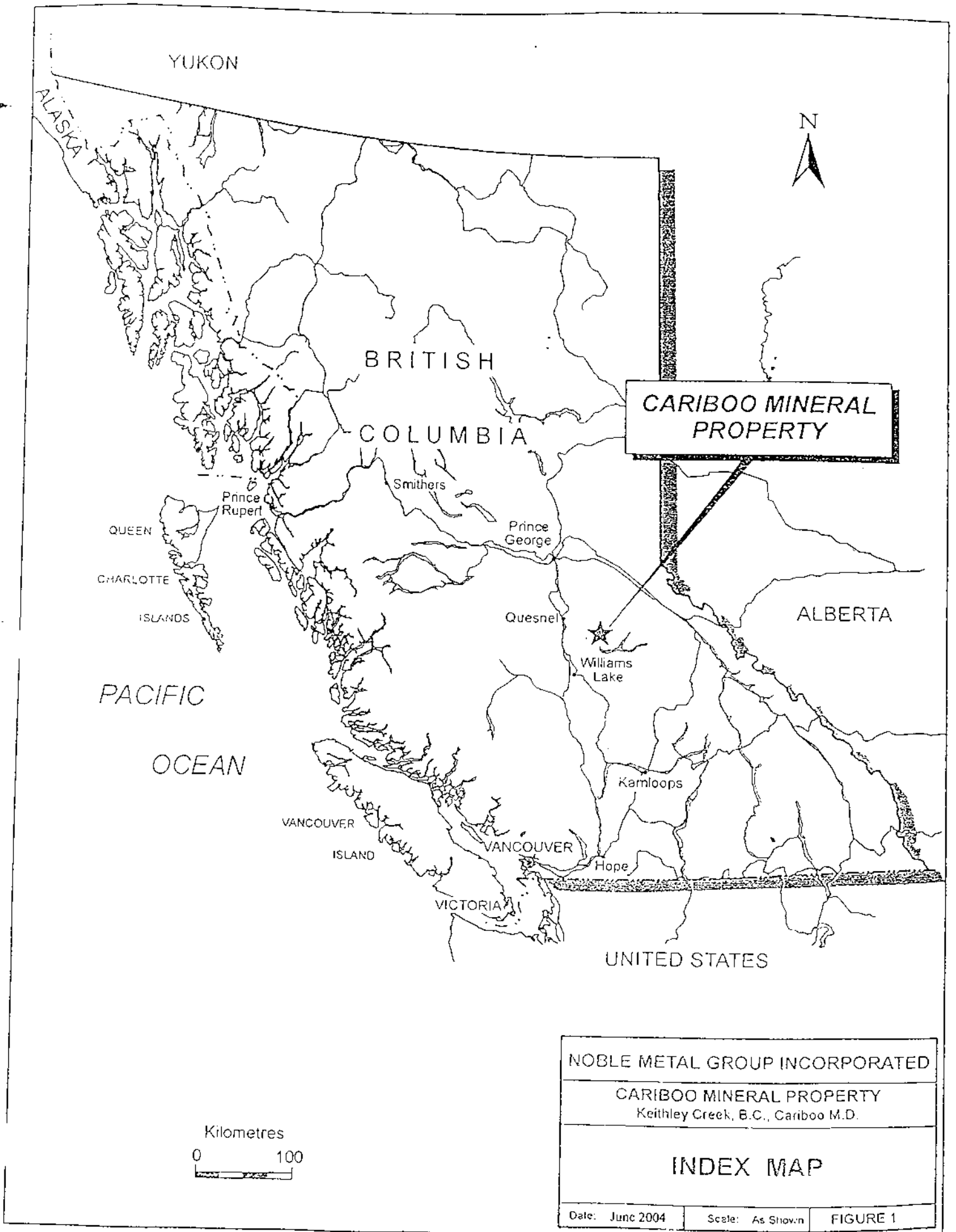
<b><u>TENURE No.</u></b>	<b><u>CLAIM NAME</u></b>	<b><u>No. UNITS</u></b>	<b><u>EXPIRY DATE</u></b>
204756	CAC I	20	2009/07/12
204757	CAC II	20	2009/07/12
205123	CAC 3	20	2009/04/16
205124	CAC 4	20	2009/04/16
205125	CAC 5	20	2009/04/16
412720	CAC 6	20	2008/07/23
412721	CAC 7	20	2008/07/23
412722	CAC 8	20	2008/07/24
204351	CASCA 1	8	2007/10/02
204352	CASCA 2	20	2008/10/02
204363	CASCA 3	16	2008/10/23
204364	CASCA 4	16	2008/10/23

<u>TENURE NO.</u>	<u>CLAIM NAME</u>	<u>NO. UNITS</u>	<u>EXPIRY DATE</u>
410855	CASCA 5	20	2009/05/29
204185	D.D. 2	6	2008/08/17
349094	D.D. 3	12	2010/07/14
349095	D.D. 4	20	2007/07/19
349096	D.D. 5	20	2007/07/19
349097	D.D. 6	20	2007/07/17
349098	D.D. 7	1	2011/07/16
349099	D.D. 8	1	2011/07/16
349100	D.D. 9	1	2011/07/16
410856	DOT 1	20	2009/05/29
410865	DOT 2	1	2008/05/27
410872	DOT 3	1	2008/05/27
410873	DOT 4	1	2008/05/27
410874	DOT 5	1	2008/05/27
410875	DOT 6	1	2008/05/27
410876	DOT 7	1	2008/05/27
410877	DOT 8	1	2008/05/27
204123	J #1	20	2008/10/12
302656	J-2	18	2009/07/16
313489	NMG 1	1	2010/07/24
313490	NMG 2	1	2010/09/24
313491	NMG 3	1	2010/09/24
313492	NMG 4	1	2010/09/24
313493	NMG 5	1	2010/09/24
313494	NMG 6	1	2010/09/24
313495	NMG 7	1	2010/09/24
313496	NMG 8	1	2010/09/24
313497	NMG 9	1	2010/09/25
313498	NMG 10	1	2010/09/25
313499	NMG 11	1	2010/09/25
313500	NMG 12	1	2010/09/25
320311	NMG 13	1	2007/08/07
320312	NMG 14	1	2007/08/07
320313	NMG 15	1	2007/08/07
320314	NMG 16	1	2008/08/07
320315	NMG 17	1	2008/08/07
320316	NMG 18	1	2008/08/07
320317	NMG 19	1	2008/08/07
320318	NMG 20	1	2008/08/07
320319	NMG 21	1	2008/08/07
320320	NMG 22	1	2008/08/07
320321	NMG 23	1	2008/08/08

<u>TENURE NO.</u>	<u>CLAIM NAME</u>	<u>NO. UNITS</u>	<u>EXPIRY DATE</u>
320322	NMG 24	1	2008/08/08
320323	NMG 25	1	2008/08/08
320324	NMG 26	1	2008/08/08
320325	NMG 27	1	2008/08/08
320326	NMG 28	1	2008/08/08
320327	NMG 29	1	2008/08/09
320328	NMG 30	1	2008/08/09
320329	NMG 31	1	2011/08/09
320330	NMG 32	1	2011/08/09
320331	NMG 33	1	2011/08/09
320332	NMG 34	1	2013/08/09
410850	NMG 35	1	2008/05/27
410851	NMG 36	1	2008/05/27
410852	NMG 37	1	2008/05/27
410853	NMG 38	1	2008/05/27
410854	NMG 39	1	2008/05/27
320338	NMG 40	1	2008/08/10

This report covers work completed and filed for the following claims with new expiry dates.

<u>TENURE NO.</u>	<u>CLAIM NAME</u>	<u>NO. UNITS</u>	<u>EXPIRY DATE</u>
204351	CASCA 1	8	2009/10/02
204123	J-1	20	2008/10/12



**CARIBOO MINERAL  
PROPERTY**

**NOBLE METAL GROUP INCORPORATED**

**CARIBOO MINERAL PROPERTY**  
Keithley Creek, B.C., Cariboo M.D.

**INDEX MAP**

Date: June 2004      Scale: As Shown      **FIGURE 1**

**AREA OF DETAIL MAP  
SEE FIGURE 4**

5856000N

5854000N

5852000N

5850000N

5848000N

METRES  
0 500 1000 1500 2000

D.D. 6  
348067  
5NX4W

D.D. 5  
349096  
5NX4W

D.D. 4  
349095  
5NX4E

CAC 4  
205124  
5NX4W

CAC 3  
205123  
5NX4E

CAC 1  
204756  
5NX4W

CAC II  
204757  
5NX4W

CAC 8  
412722  
5NX4W

CAC 5  
205125  
5SX4W

CASCA 1  
204351  
2NX4W

D.D. 2  
204185  
2SX3W

CAC 7  
412721  
5SX4W

CAC 6  
412720  
5NX4E

CASCA 3  
204363  
4NX4W

CASCA 2  
204352  
4SX5W

CASCA 4  
204364  
4SX4W

CASCA 5  
410855  
4SX6W

DOT 2  
410872  
700504

DOT 3  
410872  
700504

DOT 4  
410873  
700504

DOT 5  
410873  
700504

DOT 6  
410873  
700504

DOT 7  
410873  
700504

DOT 8  
410873  
700504

DOT 1  
410856  
5NX4E

D.D. 9  
342656  
3SX8W

D.D. 8  
342656  
3SX8W

D.D. 3  
349094  
3SX4E

NOT  
NMG  
CLAIMS

J #1  
204123  
4NX5W

STU 1  
204184

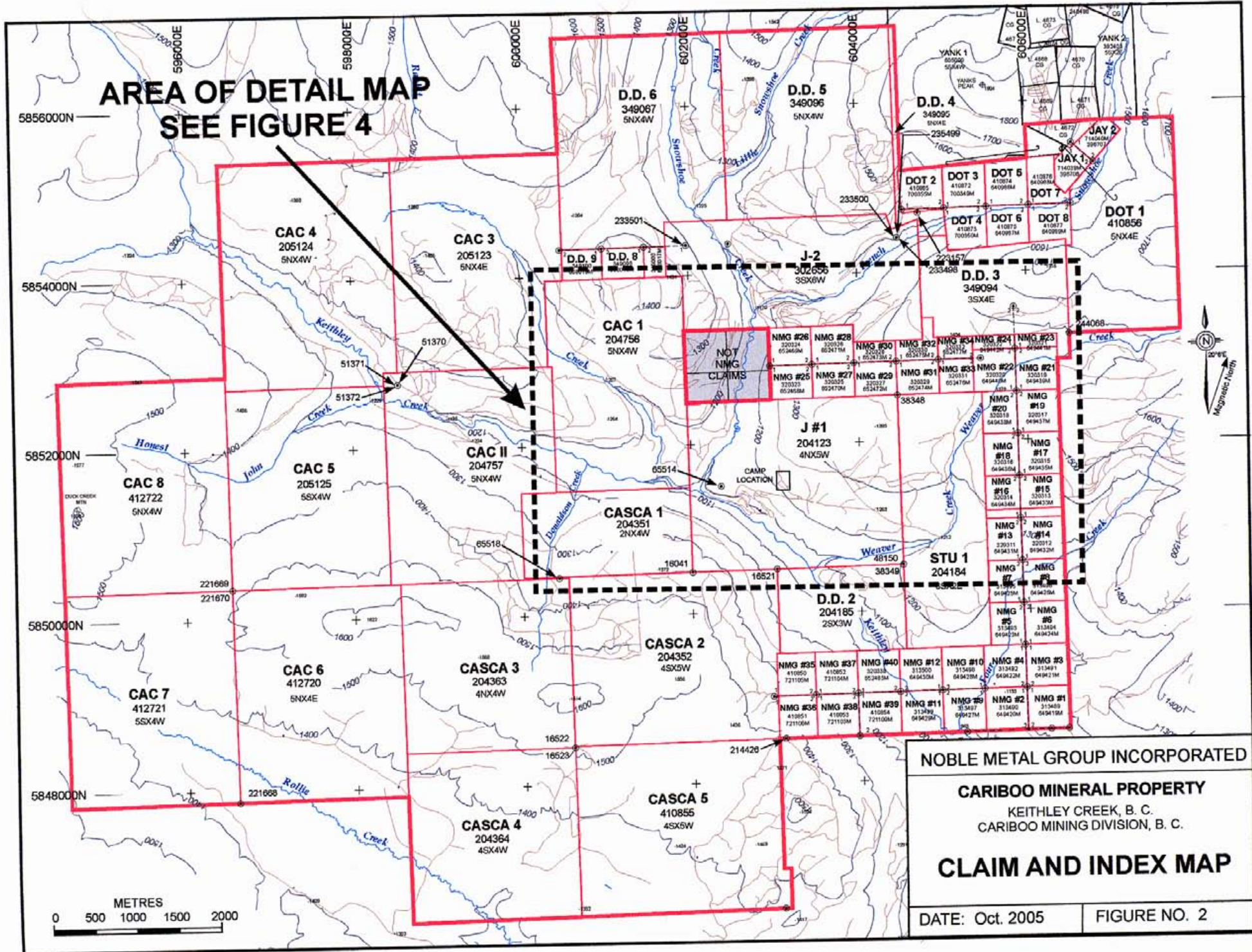
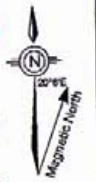
**NOBLE METAL GROUP INCORPORATED**

**CARIBOO MINERAL PROPERTY**  
KEITHLEY CREEK, B. C.  
CARIBOO MINING DIVISION, B. C.

**CLAIM AND INDEX MAP**

DATE: Oct. 2005

FIGURE NO. 2





## **ACCESSIBILITY, CLIMATE, LOCAL RESOURCES, INFRASTRUCTURE AND PHYSIOGRAPHY**

The property is located in the Quesnel Highlands of Central British Columbia with elevations ranging from 1000 to 1500 metres above sea level.

Topography varies from steep along the Keithley Creek and Snowshoe Creek to moderate and gentle at higher elevations.

Keithley Creek flows in a southeasterly direction through the centre of the property with many creeks such as Donaldson, Honest John, Rabbit, Snowshoe and Weaver Creeks flowing into Keithley Creek.

The area receives significant precipitation throughout the year as both rain and snow. Accumulations of snow may reach three metres or more during the winter months. Temperatures can vary from -25°C in winter to +30° in summer.

The natural vegetation is predominantly coniferous forest consisting of spruce, balsam, fir and cedar. Large portions of the property have been logged by clear cutting and most of these areas have been replanted. Many of the replanted areas contain second growth trees ranging from three to ten metres in height.

Access to the property is via the property is provided by an all-weather logging road to Keithley Creek from the community of Likely, B.C. From the old settlement of Keithley Creek, on Cariboo Lake, a logging road on the north side of Keithley Creek leads to the property. A network of logging and skid roads provide good access to all areas of the property, although some upgrading may be required.

A logging road also leads to the Keithley-Rabbit Creek grid area from Cariboo Lake parallel to Keithley Creek on the south side.

The community of Likely, situated on Quesnel Lake, is reached by paved highway from a point on Highway 97 about 12 kilometres southeast of the Town of Williams Lake. Distance from Highway 97 to Likely is approximately 90 kilometres.

Williams Lake is a logging and lumber centre serviced by scheduled daily air service from Vancouver. Necessary supplies and equipment as well as local labour and modern communications are readily available.

Power for exploration purposes would be supplied by portable generating units if required, while water services are plentiful from the numerous creeks and rivers.

## HISTORY

The Cariboo region of British Columbia is notable for the gold rush that began in 1860, which has continued to some degree to the present day. Placer gold was discovered on Keithley, Snowshoe, Little Snowshoe and French Snowshoe Creeks around the same time.

Prospecting for hard rock deposits started shortly after the Cariboo gold rush began with production in the Wells-Barkerville area beginning in 1935.

Noble Metal Group Incorporated and its predecessor company Cascadia Mines and Resources Ltd. have been carrying out intermittent exploration for lode deposits since 1979.

Various work programs were carried out in several areas of the property including initial soil geochemical surveys, magnetic and electro-magnetic surveys, Induced Polarization surveys, trenching and diamond drilling.

Early drill programs testing quartz and fault structures did not intersect gold values of interest, however recent drilling has shown anomalous values in gold, nickel, chromium, strontium and vanadium in the area south of French Snowshoe Creek. A comprehensive geochemical soil sampling survey was carried out in the Keithley-Rabbit Creek area and reported in 2004.

During the summer of 2005, a diamond drill program consisting of three holes totalling 880.88 metres was completed on the CAC 3 mineral claim.

## GEOLOGICAL SETTING

### Regional Geology

The Cariboo mining district is divided into four tectonically and stratigraphically unique terrains. The rocks of the four terrains range in age from Proterozoic to Jurassic and were deposited into an ocean environment. From east to west, the terrains are Cariboo (continental shelf clastics and carbonates), Barkerville (continental shelf and slope clastics, carbonates and volcanoclastics), Slide Mountain (rift floor pillowed basalt and chert) and Quesnel (island arc volcanoclastics and fine grained clastics.) (See Figure 4).

The Cariboo Terrain is of Precambrian to Permo Triassic age and is in fault contact with the western margin of the Precambrian North American Craton along the Rocky Mountain Trench. It can be divided into two successions, one Cambrian and older and the other Ordovician to Permo-Triassic. The older succession consists of grit, limestone, sandstone and shale and is unconformably overlain by the younger succession of basinal shale, dolostone, wacke, limestone and basalt.

The Barkerville Terrain consists of Precambrian and Palaeozoic rocks ranging in composition from grit, quartzite, and black and green pelite to lesser limestone and volcanoclastic rocks. The contact between the Barkerville and Cariboo terrains is the northwest trending, east dipping Pleasant Valley Thrust.

The Barkerville and Cariboo terrains are overthrust (Pundata Thrust) by the Slide Mountain Terrain. The Slide Mountain Terrain consists of Mississippian to Permian basalt in part pillowed, and chert pelite sequences intruded by diorite, gabbro and minor ultramafic rocks.

The Quesnel Terrain lies west of the Slide Mountain Terrain and consists of Upper Triassic and Lower Jurassic black shale and volcanoclastic greenstone.

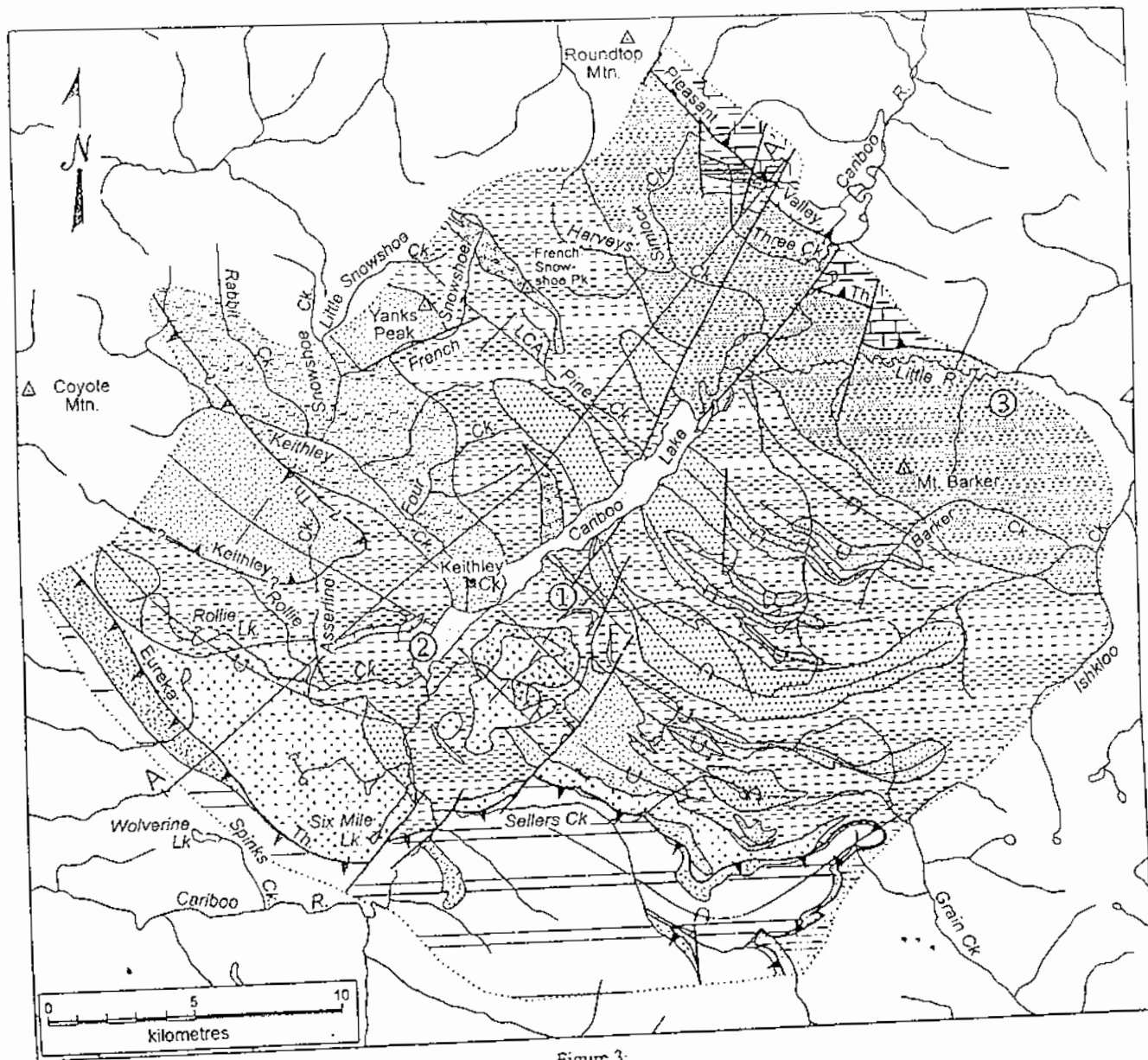


Figure 3

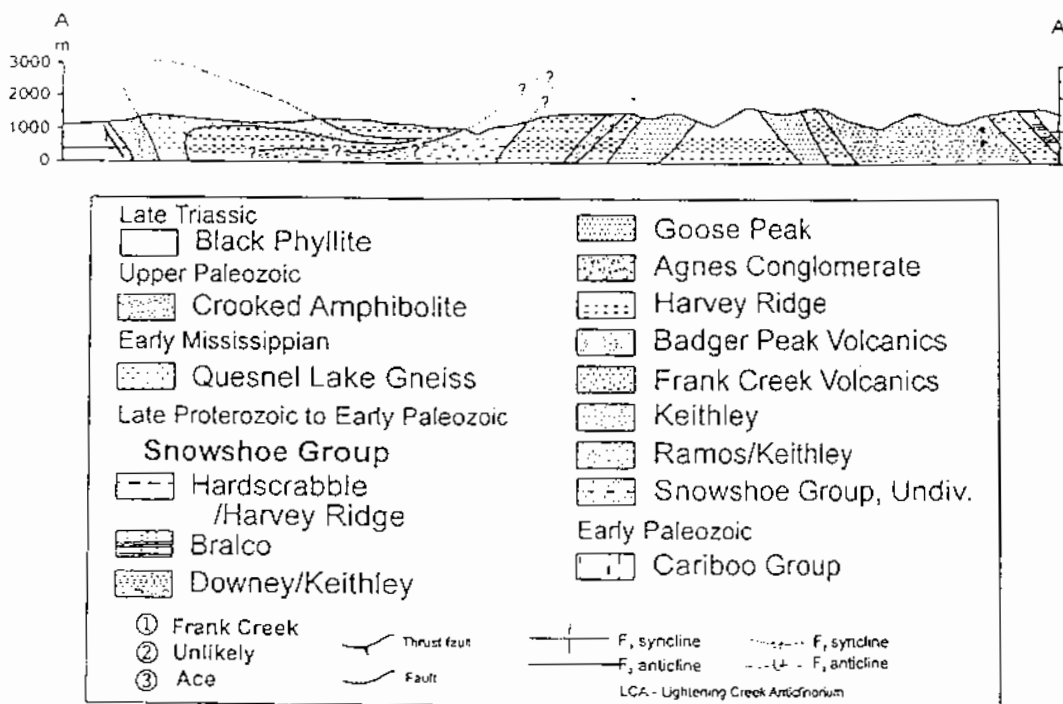


Figure 3. (a) Simplified preliminary geologic map of the Cariboo Lake area. (b) Simplified structural cross-section.

## Local Geology

The rocks in the vicinity of Yank's Peak belong to the Barkerville Terrain and have been named the Snowshoe Group by Struik (1988). Struik has further divided the sedimentary and volcanic rocks of the Snowshoe Group into fourteen informal subdivisions, Ramos, Tregillus, Kee Khan, Keithley, Harvey's Ridge, Goose Peak, Agnes, Downey, Eaglenest, Bralco, Hardscrabble, Unnamed carbonate, Island Mountain, and Tom. Igneous intrusions of the terrain consist mainly of diorite and gabbro sills with quartz porphyry rhyolite. All rocks have been regionally metamorphosed to low and middle greenschist facies.

The following table summarizes the composition of each group, as well as the estimated thickness (from Struik 1988).

Island Mountain Amphibolite (<150m)	Amphibolite, tuff siliceous mylonite
Hardscrabble Mountain (≤150m)	Black sulphide, argillite and muddy granule conglomerate
Bralco (<100m)	Grey limestone, locally pelletal, commonly marble, includes undifferentiated phyllite
Eaglenest (≥150m)	Grey and olive micaceous feldspathic, poorly sorted quartzite and phyllite
Downey (≥150m)	Olive-grey micaceous feldspathic, poorly sorted quartzite and phyllite, marble, metabasaltic volcanoclastics
Agnes (<150m)	Light grey conglomerate in part with calcareous matrix
Goose Peak (<250m)	Light grey, poorly sorted quartzite, phyllite, minor black sulphide
Harvey's Ridge (<300m)	Black micaceous, poorly sorted quartzite, sulphide and phyllite, minor muddy conglomerate, limestone and basaltic metavolcanics
Keithley (<300m)	Light grey quartzite, olive micaceous, poorly sorted quartzite, sulphide and phyllite

Kee Khan (<750m)	Marble, olive phyllite, sandy marble
Tregillius (>400m)	Olive-grey micaceous, poorly sorted feldspathic quartzite and phyllite, conglomerate
Ramos (>300m)	Olive micaceous poorly sorted feldspathic quartzite and phyllite, black sulphide and phyllite, amphibolite, marble, minor basaltic and felsic volcanics
Tom (<175m)	Olive-grey micaceous poorly sorted feldspathic quartzite, phyllite and schist; quartzose mylonite

The successions range in age from Hadrynian (Ramos through Keithley) to Palaeozoic (Harvey's Ridge through Bralco) and Upper Palaeozoic (Hardscrabble Mountain and Island Mountain Amphibolite).

Recent work by the British Columbia Geological Survey reported in Geological Fieldwork 2001, Report 2002-1, suggests that rocks of the Downey and Ramos may be equivalent to the Keithley succession.

### **Property Geology**

The claims of the Noble Metal property are underlain by rocks of the Ramos succession of which interbedded quartzite and phyllite are the most abundant. The age of the Ramos succession is believed to be Hadrynian. A limestone formation is present in the Keithley-Rabbit Creek area (Bralco?).

The quartzite is olive to grey on fresh surfaces, is poorly sorted and generally medium to coarse grained. The quartz clasts are predominantly glass clear and grey with minor blue. The quartzite is usually micaceous and sericite, epidote, muscovite, chlorite and biotite occur along foliations. Some sections of the quartzite are weakly calcareous.



The phyllite varies from olive, grey to black with chlorite and accessory pyrite, and pyrrhotite. There is often rhythmic banding within the phyllite and contacts between the quartzite and phyllite are usually sharp. The limestone is grey to black with marbly sections, commonly vuggy with quartz and carbonate bands and stringers.

The main structure in the area is the Keithley Creek Thrust that runs from Shoal's Bay on Quesnel Lake northwest up Keithley Creek and crosses Lightning Creek in the Wingdam area. A north-south fault that may be a continuation of the Antler Fault continues from the southern end of Bowron Lake southwards to Snowshoe Creek, and the lower portion of Rabbit Creek, towards the Keithley Creek Thrust.

The quartzites, phyllites and greywackes are intruded by dioritic rocks and several zones of mafic, ultramafic and altered ultramafic rocks.

## PROSPECTING PROGRAM

The 2005 prospecting program was carried out utilizing old logging roads and trails and compass lines.

Traverses are plotted on Figure 4 illustrating the outcrops and sample locations. Rock types observed include quartzite, phyllite, limestone and diorite. Eight grab samples numbered P1 to P8 were collected and assay results are exhibited as Appendix I. Anomalous values in titanium from 0.09% to 0.24% are noted in several samples, 1060 ppm strontium in sample P4 (limestone) and 1.45% copper in sample P7 (see Figure 4).

A description of the rock types of the samples collected is described below.

### Grab Samples Noble Metal Claims October 2005

<u>SAMPLE NO.</u>	<u>ROCK TYPE</u>	<u>MINERALIZATION</u>	<u>CU</u> <u>PPM</u>	<u>SR</u> <u>PPM</u>	<u>Ti</u> <u>%</u>
P1	Graphite Phyllite	Pyrite	51	10	0.02
P2	Phyllite	Pyrite	23	48	0.09
P3	Quartzite		274	23	0.09
P4	Limestone		22	1060	0.02
P5	Phyllite		16	84	0.15
P6	Phyllite		15	139	0.17
P7	Diorite	Malachite, Pyrite	14800	27	0.24
P8	Quartzite		141	80	0.14

## **CONCLUSIONS AND RECOMMENDATIONS**

Previous stream and sediment sampling results exhibiting anomalous gold values in Weaver Creek supported by samples P1 and P2 containing sulphide mineralization merit further investigation in this area as well as detailed prospecting and mapping on the Casca I mineral claim and follow up of the strontium and titanium anomalous values.

Respectfully submitted,

A handwritten signature in black ink, appearing to read 'W. G. Timmins', written in a cursive style.

**W. G. Timmins, P.Eng.**

Vancouver, B.C.

June 22, 2006

## STATEMENT OF QUALIFICATIONS

I, William G. Timmins, of the City of Vancouver, in the Province of British Columbia, do hereby certify that:

1. I am a consulting geologist, with offices at 1016 - 470 Granville Street, Vancouver, B.C. V6C 1V5.
2. I have been practising my profession since 1965, having been engaged in the evaluation, exploration and development of mineral properties throughout Canada, the United States, Latin and South America, Australia and New Zealand.
3. I am a graduate of the Provincial Institute of Mining, Haileybury, Ontario (1956) and attended Michigan Technological University 1962-1965, Geology and was licensed by the Professional Engineers Association of B.C. (geological discipline) in 1969.
4. This report titled "Prospecting Program on the J-2, STU 1, NMG Mineral Claims" dated June 22, 2006, is based on published and private reports, maps and data provided by Noble Metal Group Incorporated and in the public domain, and supervision of the project on site from October 12th to 22nd, 2005. The author has reviewed relevant data prepared by reputable qualified persons and is responsible for his own geological analysis and conclusions.
5. I have no interest, nor do I expect to receive any interest in the properties or securities of Noble Metal Group Incorporated.



June 22, 2006

**W.G. Timmins, P.Eng.**

## REFERENCES

- B.C. Ministry of Energy and Mines. (1999): British Columbia Regional Geochemical Survey.
- B.C. Ministry of Energy and Mines. (2002): Preliminary Geology of the Cariboo Lake Area, Central B.C. Geological Field Work 2001, Paper 2002-1.
- Brown, A. Sutherland (1957): Geology of the Antler Creek Area, Cariboo District, British Columbia, B.C. Department Mines Bulletin No. 38.
- Cartwright, Paul A. (1995): Report on Induced Polarization and Resistivity Survey and Magnetic Survey on the Cariboo Gold Property, J #1, Casca 1-4 Claims, Cariboo Mining Division, British Columbia for Noble Metal Group Incorporated.
- Crooker, G. (1996): Assessment Report on J #11 and CAB 3-4 Mineral Claims, Cariboo Mining Division for Noble Metal Group Incorporated.
- Garrow, Terry D. (1989): The 1989 Geological Exploration Report on the Cariboo Gold Property Prepared for Noble Metal Group Incorporated.
- Holland, Stuart S. (1954): Geology of the Yank's Peak - Roundtop Mountain Area, Cariboo District, British Columbia, B.C. Department of Mines Bulletin No. 34.
- Lorimer, M.K. (1989): Geochemical Report on the CAC Claim Group, Cariboo M.D. for Cascadia Mines and Recovery Ltd.
- Robert, Francois and Taylor, Bruce, E.: Structure and Mineralization of the Mosquito Creek Gold Mine, Cariboo District, B.C., Geological Survey of Canada.
- Schell, B., Timmins, W.G. (1997): Diamond Drilling Report on J #1 and NMG 29 Claims.
- Seywerd, Markus B. (1991): Geophysical Report on a Magnetometer and VLF-EM Survey on the Stu Claim Group, Cariboo Mining Division for Noble Metal Group Incorporated.
- Struik, L.C. (1988): Structural Geology of the Cariboo Gold Mining District, East-Central British Columbia, Geological Survey of Canada, Memoir 421.
- Timmins, W.G. (2001): Diamond Drilling Report on the NMG 26 Mineral Claim, Keithley Creek Area, Cariboo Mining Division for Noble Metal Group Incorporated.
- Timmins, W.G. (2004): Geochemical Report on the Geochemical Soil Survey and Stream Sediment Survey, Cariboo Mining Division for Noble Metal Group Incorporated.
- Timmins, W.G. (2004): Assessment Report on the Cariboo Gold Property, Keithley Creek Area, B.C. for Noble Metal Group Incorporated.

## **APPENDICES**

**Appendix 1**  
**ASSAY CERTIFICATES**



# Loring Laboratories Ltd.

629 Beaverdam Road N.E.,  
Calgary Alberta T2K 4W7  
Tel: 274-2777 Fax: 275-0541



To: WGT CONSULTANTS  
Suite 1016, 470 Granville St.  
Vancouver, B.C.  
V6C 1V5

FILE:48423

DATE: March 13, 2006

Attn: Bill Timmins

## 30 ELEMENT ICP ANALYSIS

Sample No.	Ag ppm	Al %	As ppm	Au ppb	B ppm	Ba ppm	Bi ppm	Ca %	Cd ppm	Co ppm	Cr ppm	Cu ppm	Fe %	K %	La ppm	Mg %	Mn ppm	Mo ppm	Na %	Ni ppm	P %	Pb ppm	Sb ppm	Sr ppm	Th ppm	Ti %	U ppm	V ppm	W ppm	Zn ppm
P1	<0.5	0.39	<1	<5	32	32	<1	0.08	1	31	97	51	1.29	0.24	21	0.05	56	4	0.01	46	0.02	24	5	10	2	0.02	<1	22	<1	161
P2	<0.5	1.99	5	<5	29	38	<1	1.31	<1	47	63	23	2.22	0.25	64	0.80	897	<1	0.02	20	0.04	19	5	48	7	0.09	<1	26	<1	49
P3	<0.5	0.85	<1	<5	29	12	2	0.67	<1	26	86	274	0.83	0.08	17	0.43	314	2	0.09	12	0.02	10	3	23	<1	0.09	<1	58	<1	14
P4	<0.5	0.16	3	<5	23	14	6	18.89	<1	10	24	22	0.62	0.11	101	0.10	346	<1	0.01	4	0.02	10	2	1060	<1	0.02	<1	44	<1	13
P5	<0.5	1.66	<1	<5	30	47	<1	0.52	<1	49	69	16	1.93	0.24	24	0.51	435	<1	0.02	18	0.06	13	2	84	<1	0.15	<1	24	<1	39
P6	<0.5	2.12	<1	<5	32	59	<1	0.76	<1	50	35	15	2.19	0.41	43	0.70	350	<1	0.02	25	0.03	17	2	139	12	0.17	22	26	<1	60
P7	1.2	1.16	<1	<1	47	282	5	0.57	1	104	19	14800	5.92	0.61	20	0.87	351	2	0.04	<1	0.13	15	6	27	<1	0.24	<1	749	<1	51
P8	<0.5	1.69	<1	<5	35	31	2	1.28	<1	29	87	141	1.26	0.15	25	0.51	273	<1	0.15	12	0.03	12	3	80	<1	0.14	<1	72	<1	12
P1-R	<0.5	0.46	<1	<5	35	38	<1	0.10	1	36	134	60	1.42	0.21	24	0.06	58	5	0.01	52	0.02	27	5	8	<1	0.02	<1	22	<1	178

0.500 Gram sample is digested with Aqua Regia at 95 C for one hour and bulked to 10 ml with distilled water.

Partial dissolution for Al, B, Ba, Ca, Cr, Fe, K, La, Mg, Mn, Na, P, Sr, Ti, and W.

"R" Denotes duplicate sample analyzed.

Gold analyzed fire assay/A.A.

Certified by:





# Loring Laboratories Ltd.

629 Beaverdam Road N.E.,  
Calgary Alberta T2K 4W7  
Tel: 274-2777 Fax: 275-0541



To: **WGT CONSULTANTS**  
Suite 1016, 470 Granville St.  
Vancouver, B.C.  
V6C 1V5

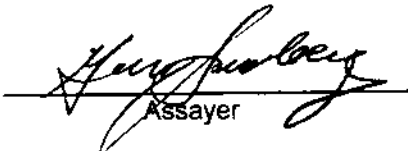
File No : 48423  
Date : March 16, 2006  
Samples : Rock

Attn: Bill Timmins

## Certificate of Assay

Sample No.	Copper %
P7	1.45

I HEREBY CERTIFY that the above results are those assays made by me upon the herein described samples:

  
Assayer

Rejects and pulps are retained for one month unless specific arrangements are made in advance.

**Appendix 2**

**STATEMENT OF EXPENDITURES**

# EVENTYR HOLDINGS LTD.

---

818 - 470 Granville Street  
Vancouver, B.C. Canada V6C 1V5

## INVOICE

To: Noble Metal Group Incorporated  
1520 - 1100 Melville Street  
Vancouver, B.C.  
V6C 1V5

October 30, 2005

**PROSPECTING PROGRAM  
OCTOBER 12 TO 22, 2005  
KEITHLEY CREEK AREA  
CARIBOO MINING DIVISION**

---

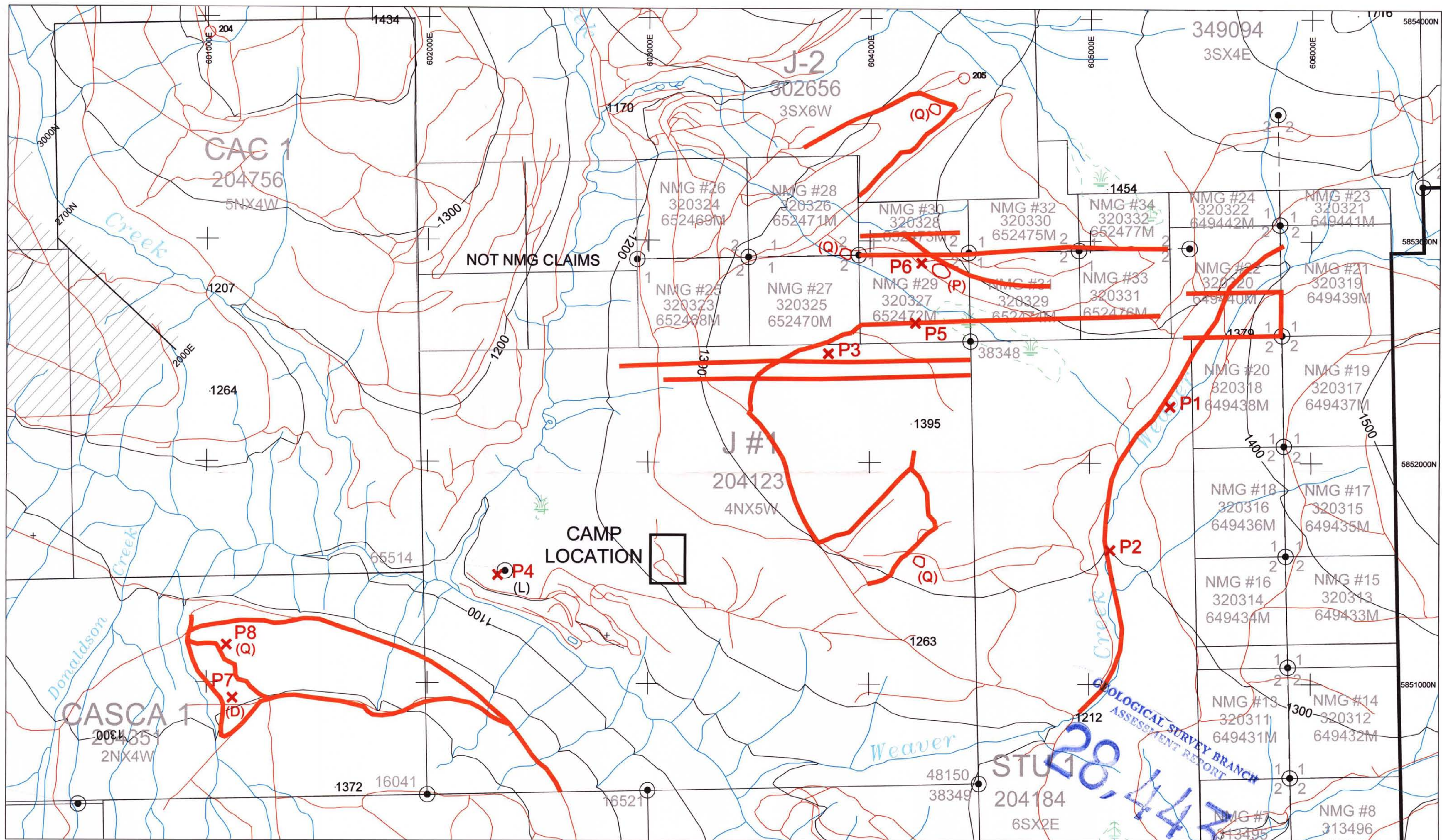
### PROSPECTING SERVICES RENDERED:

Traverses on J 1 & 2, STU 1,  
NMG 22, 29, 31, 33 Claims

Prospecting: L. Sostad	12 days @ \$250/day	\$ 3,000	
Assistant: C. Delorme	10 days @ \$150/day	<u>1,500</u>	\$ 4,500
Truck Rental	12 days @ \$50/day	\$ 600	
Gas and Oil		<u>740</u>	1,300
Food & Accommodation:			
L. Sostad	12 days @ \$100/day	\$ 1,200	
C. Delorme	10 days @ \$100/day	<u>1,000</u>	2,200
Miscellaneous:			
Power Saw	12 days @ \$30/day	\$ 360	
Flagging	10 rolls @ \$4/each	40	
Felt Pens	6 @ \$4/each	24	
Map		<u>43</u>	<u>467</u>

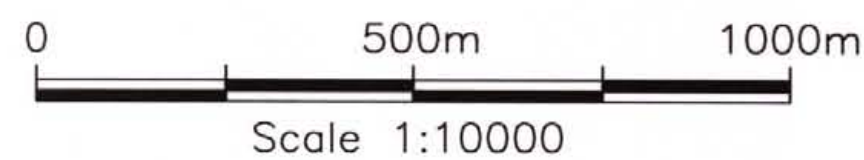
**TOTAL AMOUNT THIS INVOICE**

**\$ 8,467**



Legend

- |             |                       |            |           |
|-------------|-----------------------|------------|-----------|
| <b>x P7</b> | SAMPLE: P1 to P7      | <b>(D)</b> | DIORITE   |
|             | PROSPECTING TRAVERSES | <b>(P)</b> | PHYLLITE  |
|             |                       | <b>(Q)</b> | QUARTZITE |
|             |                       | <b>(L)</b> | LIMESTONE |



**Noble Metal Group Incorporated**

**Cariboo Mineral Property**  
Keithley Creek, British Columbia

**PROSPECTING TRAVERSES SHOWING SAMPLE LOCATIONS**

OCT. 2005 FIGURE 4