

THE SKOONKA GOLD PROJECT
Kamloops Mining Division
Lytton-Spences Bridge Area, British Columbia
NTS 92I/5-6 07/08

Bootahnie Property
Technical PROGRAM
2006

Assessment Report

50° 23' N and 121° 34' W

by



James A. Turner, P.Geo
14149 17 A Avenue
Surrey, B.C. V4A 6R8
604-531-9713

Prepared for
Anglo-Canadian Uranium Corp.
Suite 1150-555 Burrard Street
Vancouver, B.C. CANADA
V6C 2B3

August 15, 2005

TABLE OF CONTENTS

Title Page	1
Table of Contents	2
1.0 EXECUTIVE SUMMARY	4
2.0 INTRODUCTION AND TERMS OF REFERENCE	5
2.1 Qualified Person and Participating Personnel	
2.2 Terms, Definitions and Units	
2.3 Source Documents	
2.4 Limitations, Restrictions and Assumptions	
2.5 Scope of Review	
3.0 PROPERTY DESCRIPTION AND LOCATION	6
3.1 Location	
3.2 Property Description	
4.0 CLIMATE, AND PHYSIOGRAPHY	
5.0 HISTORY	7
6.0 GEOLOGIC SETTING	7
6.1 Regional Geological Setting	
6.2 Property Geology	
7.0 DEPOSIT TYPES	10
8.0 MINERALIZATION AND ALTERATION AND EXPLORATION	10
8.1 Exploration Work 2006	
8.2 Geochemistry	
9.0 SAMPLING METHOD AND APPROACH	10
10.0 SAMPLE PREPARATION, ANALYSES AND SECURITY	11
11.0 RESULTS	11
12.0 DATA VERIFICATION	11
13.0 INTERPRETATION AND CONCLUSIONS	11
14.0 RECOMMENDATIONS	11
15.0 PERSONELL AND CONTRACTORS	12
16.0 COST STATEMENT 2006	16

17.0	DATE	13
18.0	REFERENCES	131
19.0	CERTIFICATE OF THE WRITER	15
20.0	ILLUSTRATIONS	after 16
21.0	APPENDICES	16

List of Figures

Figure 1: Location Map-BC	Fig 1.pdf
Figure 2: Claim Map BOOTAHNIE	Fig 2.pdf
Figure 3: Regional Geology	Fig 3.pdf
Figure 4: Rock Sample Locations	Fig 4.pdf
Figure 5: Gold in Rocks	Fig 5.pdf
Figure 6: Copper in Rocks	Fig 6.pdf
Figure 7: Lead in Rocks	Fig 7.pdf
Figure 6: Zinc in Rocks	Fig 8.pdf

List of Tables

Table 1: BOOTAHNIE Claims Summary	6
Table 2: Rock Units in the Area	9
Table 3: Cost Statement-BOOTAHNIE Property 2006	16

APPENDICES

Appendix I:	Assay Certificates
Appendix II:	Rock Sample Descriptions

1.0 EXECUTIVE SUMMARY

The BOOTAHNIE Property covers a Clay-Sericite-Pyrite altered intrusive in the Kamloops Mining Division of southern British Columbia, TRIM Sheet NTS 921033. This prospect is readily accessible by road, 25 kilometers northeast from the village of Lytton on the Trans-Canada Highway. It is situated just 35 kilometers west-southwest of the world-class porphyry copper producing Highland Valley district. The claims comprising 145 units (2990.635 hectares) were acquired by using the BC MTO system in 2006. Work on this claim group and its periphery is the subject of this assessment report. All of the claims are 100% owned by either James Albert Turner or Francis LaRoche or Daniel Harvey.

Physiography in the property area is dominantly forested moderate to locally rugged upland terrain of the Scarp Range between the Fraser Plateau and northern Cascade Mountains. The claims are located on upper Skoonka Creek, a tributary to the Thompson River. The area is underlain by a northwest-southeast trending porphyritic quartz monzonite and sediments of the Mount Lytton Complex. The ages and relationships of these rocks are unknown.

Exploration work during 2006 consisted of prospecting and recon geochemical sampling (43 rocks). This work was done in response to a discovery by Allmaden Minerals Ltd. of a significant new epithermal gold vein, located 5 km directly to the east. The Discovery Showing represents a large but low grade vein breccia zone having an approximate 4m true width over which the 2004 channel sampling returned a weighted average gold analysis of 380 ppb (0.38 g/t Au), with negligible silver. All of the samples collected by Anglo-Canadian Gold (The Operators) have been tested for 36 elements, or assayed for gold.

The rock sample results identify low grade gold silver and copper mineralization in a number of widely scattered quartz monzonite float and outcrop occurrences. The averaged gold grade from 31 samples is 0.6 ppb, with values ranging from <0.05 to 2.3 ppb (Au).

The current sampling results have not outlined any significant gold, silver or copper mineralization. The limited 2006 exploration program conducted on the Bootahnie claims has generated negative results, particularly areas of several percent disseminated pyrite mineralization. Twelve samples collected did not arrive at the lab and are considered lost. The writer recommends the property should be put on a hold basis or dropped.

The above program cost: CAD \$ **11,647,74.**

2.0 INTRODUCTION AND TERMS OF REFERENCE

2.1 Qualified Person and Participating Personnel

The following report was commissioned by Anglo-Canadian Uranium Corp. (formerly Interactive Explorations Ltd.) to summarize the prospecting and sampling program on the Bootahnie property near Lytton in southwest British Columbia. In July 2006 Anglo. commissioned James A. Turner to conduct a program of prospecting and sampling the Bootahnie Property controlled by Anglo-Canadian Uranium Corp. of Canada. Anglo-Canadian Uranium Corp. will be referred to as “Anglo”.

2.2 Terms, Definitions and Units

All costs contained in this report are denominated in Canadian dollars. The term “ppm” refers to parts per million or grams per metric tonne and “ppb” refers to parts per billion or milligrams per metric tonne. The symbol “%” refers to weight percent unless stated otherwise. All other units are imperial except where noted.

2.3 Source Documents

This report incorporates data from Anglo’s own fieldwork and historical work described in the assessment work reports filed with government agencies. Limited previous data was also reviewed, and incorporated as noted, including records of previous geological, rock and soil geochemistry, surveys completed between 1986 and 1998 by operators not affiliated with Anglo.

2.4 Limitations, Restrictions and Assumptions

James A. Turner did not fully audit or test the accuracy or completeness of data collected by prospectors hired for this purpose. In addition, Anglo-Canadian Uranium Corp. management has informed the author that, to the best of its knowledge, no events have occurred, other than those taken into account in the report, which might, in their opinion, cause us to change our views.

2.5 Scope of Review

To accomplish this review, James A. Turner, was asked to conduct an exploration program which included prospecting and geochemical sampling of Claims optioned in 2006 from two prospectors Alan Harvey and Francis LaRouche, and to comment on the Gold potential of the Bootahnie Property controlled by Anglo of Canada. James A. Turner is a Director of Anglo and has 100,000 options in the company. Only the claims making up the **Bootahnie** property are the subject of this report.

James A. Turner along with contract prospector LaRouche and Len Harris examined the property in August 2006, LaRouche completed prospecting and geochemical sampling in late August. The following table lists the number of samples taken.

No metallurgical testing was conducted. James A. Turner has done a brief review of legal documentation and ownership and has assumed that the presented facts are correct.

A site visit was conducted on August 7-8, 2006 on the Bootahnie Property.

In arriving at our conclusions, we reviewed and relied to some extent upon the documents listed in the reference section of this report.

This report describes the results of the 2006 exploration work conducted on the BOOTAHNIE claim group and documents the related expenditures applied for assessment credits

3.0 PROPERTY LOCATION AND DESCRIPTION

3.1 Location

The BOOTAHNIE property is centered between the communities of Lytton and Spences Bridge in south central British Columbia, at latitude 50°23'09"N and longitude 121°34' 45" W (UTM Zone 10: 601000E/5582500N) on the boundary of NTS map areas 921/5&6. Good ground access is afforded via the partly hard-surfaced Botanie Lake Road from Lytton, 20 km northerly, thence three to five kilometers westerly via a forestry gravel road system which passes through the southeast corner of Bootahnie Indian Reserve #15. From the main trunk of the Botanie Lake Road, a number of old but partly serviceable logging spurs branch off westerly onto the claim group.

3.2 Property Description

The property consists of 8 contiguous mineral claims totaling 2990.635 hectares in the Kamloops Mining Division, BCGS map area 0921033. The claims were acquired electronically in 2006 using the BC Mineral Titles Online (MTO) system. The Bootahnie property comprises a total 145 grid cells. However, any further discussion of these new cell tenures is beyond the scope of this report. The property has not been legally surveyed.

Locations of the Property claims are shown on Figure 2 and respective claim data are summarized in Table 1. The expiry dates listed for the claims are subject to filing and approval of this report. Table 1 BOOTAHNIE PROPERTY Claims Summary

<u>Name</u>	<u>Tenure No.</u>	<u>Units</u>	<u>Acquired</u>	<u>Good Till</u>	<u>Hectares</u>	<u>Owner/s</u>
B 8	527310	20	9-Feb-06	9-Feb-07	412.059	1
Bootahnie 2	506080	20	7-Feb-05	24-May-07	412.212	1,2
Bootahnie 3	506087	20	7-Feb-05	24-May-07	412.482	1,2
B 9	527311	20	9-Feb-06	9-Feb-07	412.348	2
Scoonka 1	527372	25	10-Feb-06	10-Feb-07	515.796	1
	527375	10	10-Feb-06	10-Feb-06	206.381	2
Boot	536257	20	25-Jun-06	26-Jun-07	412.869	3
Scoonka 3	527974	10	12-Feb-06	12-Feb-07	206.488	1
		<u>145</u>		<u>Total</u>	<u>2990.635</u>	
1- Allen Daniel Harvey	ID	111258				
2- Francis Rene LaRoche	ID	131784				
3- James Albert Turner	ID	127456				

4.0 CLIMATE AND PHYSIOGRAPHY

The BOOTAHNIE claims are situated on the Scarped Range between the Fraser Plateau and the northern Cascade Mountains, within the western margin of the Intermontane physiographic region consisting of rolling upland to rugged mountainous terrain.

Topography is moderate to locally steep, with elevations ranging from a low point of 1000 meters on the northern property boundary to over 1780 meters in the southeastern claim area. The principal drainage is northward along a major branch of Skoonka Creek, which in turn flows eastward into the Thompson River. This branch is called Gold Creek (Fig. 2).

Soil and glacial till cover is extensive and generally shallow, but includes local deep mounds (to >5m thickness) particularly at the lower elevations in the northern property area. Overall bedrock exposure is moderate to locally abundant in road cuts and in some of the stream gullies, as well as on steep upper slopes and ridge tops. The local ice-flow direction, determined from glacial striae in outcrop along the West Spur Road, is to the east-southeast (azimuth $110^{\circ} \pm 50$) Balon 2004. The climate is semi-arid, with hot dry summers having temperatures commonly in the 30°C to above 40°C range at Lytton.

All areas of the property are generally free of snow from late May or early June through October. Vegetation consists mainly of Spruce along creek valleys. Dense brush consisting of alder and willow is common along most of the stream gullies and road cuts. Approximately 20% of the claim area has been clear-cut logged during the 1980s to mid-1990s.

6.0 HISTORY

There are no published records of any prior mineral exploration work in the area covered by the Bootahnie claims, and there are no documented mineral occurrences for this locality in the BC Minfile database. No old claim posts, nor any other ground evidence of previous exploration activity, have been found to date on the property. During the Gold Rush era of the mid - 19th to early 20th centuries, placer gold was mined from gravel bars

on the Fraser and Thompson Rivers and on most of their major tributary streams in the Ashcroft-Lytton-Lillooet district. Production records from this time period and region are not detailed, and there is no mention of Bootahnie Claim area in the published literature.

“Coarse placer gold was discovered in 1857 on the Thompson, near Nicoamen River, which initiated the Gold Rush into interior British Columbia. This Nicoamen River site is only 12 km downstream from the mouth of Skoonka Creek. In 1981 a federal-provincial government Regional Geochemical Survey was carried out over the entire Ashcroft (NTS 921) map area. The initial results of this survey were published in 1982 as BC RGS 8/GSC Open File 866. Years later, in 1994, the sample pulps were re-analyzed by improved techniques and for additional elements including gold. The new data were published as BC RGS 40/GSC Open File 2666 which identified a number of strong gold-in-silt anomalies including two located in the Skoonka Creek drainage, represented by Sample Numbers 815058 (21ppb Au/rerun 23ppb Au) and 815059 (19ppb Au).

During a 2003 regional gold exploration program, Allmaden Minerals Ltd. conducted two brief stages of prospecting and reconnaissance geochemical sampling in the upper part of Skoonka Creek drainage above the RGS sample site 815058. Results of the initial examination (by Balon, Harwood) in August confirmed and enhanced the gold silt anomaly in this tributary, later named the headwaters of a creek with strongly anomalous silt sediment geochemical response in lead zinc and copper. (BC Assessment Report 27,672).

6.0 GEOLOGIC SETTING

6.1 Regional Geologic Setting after Balon 2005

The subject region lies within the Southern Intermontane (tectonic) Belt of the Canadian Cordillera. Regional bedrock geology is shown on Figure 3, which has been compiled from The Map Place.

Lithologies within the Figure 3 map-area include successions of Mesozoic to Tertiary volcanic and sedimentary rocks which have been intruded by plutons of various compositions and ages from Late Triassic and/or Jurassic to Miocene (?). Locally thick deposits of Pleistocene and Recent glacial drift and alluvium are prevalent in all of the major creek or river valleys. Much of the region was overridden during the last Pleistocene glaciation by ice moving southeastward across the Fraser Plateau; Ryder, 1975).

The dominant rock assemblage underlying the Bootahnie property and adjacent areas is the Cretaceous Spences Bridge Group (IKSBPva) comprising a broad northwest-southeast trending thick sequence of gently folded volcanics with lesser sediments, dipping generally shallowly in various directions. These rocks include intermediate, locally

felsic and mafic flows and pyroclastics with some sandstone, shale and conglomerate (KSB), as well as a younger basaltic unit differentiated as the Spius Creek Formation (KSBS). This quite homogeneous conformable upper division was formerly called Kingsvale Group by early government geologists (Rice - 1947, Duffell and McTaggart - 1952, and others prior to Thorkelson - 1985).

The Spences Bridge Group is in fault contact with older plutonic and related metamorphic rocks of the Triassic-Jurassic Mount Lytton Complex (PTrJgd, PTrJm) to the south and west of the property area. This underlying Mount Lytton assemblage is host to a number of old known copper showings within a 10-15 km radius of the BOOTAHNIE claims (BC Minfile 0921SW030, 035, 039, 040, 057-062).

To the northwest (20-25 km) and southeast (25-40 km) of the property, the Spences Bridge Group is overlain by Tertiary (Eocene) mafic to felsic volcanics of the Kamloops and Princeton Groups (EKav, Epr). These younger volcanic units are cut by small (Miocene?) intrusions of intermediate composition (Egd), which may be part of a feeder system to them.

The major structural features in the region are steeply dipping normal faults, parallel and subparallel with those of its western bounding Fraser (River) fault system. The faults have two dominant trends, one at 140° - 150° azimuth and the other due north-south. Two parallel north-south faults occur on east side of the property, along Botanie Creek and the Thompson River. Rocks of the Spences Bridge Group are believed to have formed as a chain of stratovolcanoes associated with subsiding, fault-bounded basins (Souther, 1991 and Thorkelson, 1985).

Table 2 Rock Units of the Area

	EOCENE
Egd	granodiorite
EPr	Princeton Group - undivided sediments
	Late CRETACEOUS TO PALEOCENE
LKTgd	granodiorite
LKTqm	quartz monzonite
	CRETACEOUS
IK	Jackass Mountain Group - undivided sediments
IKSBPva	Spences Bridge Group Pimainus Formation – andesite
Ks	undivided sedimentary rocks
LTrJGBo	Guichon Creek Batholith - quartz diorites
	PERMIAN TO Upper TRIASSIC
PTrMdr	Mount Lytton Diorites
PTrMgd	Mount Lytton Complex – granodiorite
PTrMml	Mount Lytton Complex – metamorphic rocks

6.2 Property Geology

No systematic property scale geological mapping has been conducted on the Bootahnie claims, however local outcrop data have been noted during the course of other work. Very limited detailed bedrock mapping was carried during the examination by the writer.

Although most of the property has not been mapped in detail, government geology maps suggest most of the property is underlain by Quartz Monzonite of the Lytton Intrusive complex. All rocks sampled during prospecting are this type of rock. Small outcrops of pyritiferous siltstone and shale occur in the NW corner of the Bootahnie claim.

7.0 DEPOSIT TYPES

Clay and sericite alteration and pyrite mineralization of the quartz monzonite outcrops suggest there is potential for porphyry Cu type deposits. The alteration and mineralization may be the result of weathering. Much more work is needed to further define this deposit type.

8.0 MINERALIZATION, ALTERATION AND EXPLORATION

The 2006 exploration program on the Bootahnie claims was designed to prospect and sample for gold potential. The locations are plotted on Figure 4.

Most samples were taken from gossanous rock exposures on logging roads. Most of the samples show various levels of disseminated pyrite in a clay-sericite altered rock.

8.1 2006 Exploration Work

Field work in 2006 consisted of prospecting with reconnaissance rock/silt sampling with some related bedrock mapping/sampling. A total of 41 rock samples were collected and delivered to Acme Analytical Laboratories Ltd. of Vancouver, BC, for 36 element geochemical analysis plus a few selected assays. Work was conducted on the Bootahnie 1&2 claims and immediate periphery during five days in August, by one Francis LaRoche and two contract field assistants. The crew was based at the Totem Motel in Lytton. All UTM grid locations were recorded in NAD 83 using Garmin 12XL handheld GPS receiver units.

8.2 Geochemistry

In 2006 Anglo collected 43 samples from rock chip and grab samples collected from gossanous rocks. The samples were chip samples over a minimum width of 1 metre, but most were from selected grab samples.

Twenty-one samples were analyzed for 36 elements+Au (FA+AA), ten samples were only assayed for gold. Twelved samples were lost in shipping. Complete results for the samples are listed on the Acme Analytical Laboratories Ltd. Geochemical Analysis Certificates contained in Appendix A. Table (MS-Excel file) in these Appendices also gives the UTM grid locations, brief descriptions and analytical results.

9.0 SAMPLING METHOD AND APPROACH

Sample locations were marked in the field with labeled orange flagging. Rock samples were placed in plastic sample bags and sealed with twist ties. A UTM grid location was recorded for every site by handheld GPS unit using the NAD 83 datum. All of the samples were shipped to Acme Analytical Laboratories Ltd. in Vancouver, BC, for 36element analysis by Inductively Coupled Plasma - Mass Spectrometry (ICP-MS). Stream sediment samples were collected from the finest silt/sand material available in the active channel, with little or no organic matter. Individual soil and stream sediment sample weights were approximately 0.5 kilogram. Both types of samples were shipped to the laboratory in labeled standard 4"x6" Kraft paper bags.

10.0 SAMPLE PREPARATION, ANALYSES AND SECURITY

Sample preparation there involved drying at up to 60°C and sieving (up to) 100 grams from each to -80 mesh. Contingent upon the amount of -80 mesh material available, a 7.5, 15 - or 30- gram sub-sample was cut and then leached with 180 ml of 22-2 HCL-HNO₃-H₂O at 95°C for one hour, followed by dilution to 600ml and ICP-MS analysis. Rock sample individual weights ranged from <1-3 kilograms for float samples and 2.5-10 kilograms for bedrock (continuous chip or channel) samples. At the laboratory, rock sample preparation consisted of crushing each to - 10 mesh (70%) followed by pulverizing a 250-gram split to 95% passing 150 mesh. A 30-gram sub-sample was then subjected to the same acid digestion and analytical procedure as that employed for the soil and silt samples.

11.0 RESULTS

Results from the limited sampling program showed low or no gold or copper. Results ranged from <1 -3.6 ppb Au and 3.9-332 ppm Cu.

12.0 DATA VERIFICATION

No sample data verification other than those provided by ACME (blanks, standards, duplicates) was included in the 2006-work program.

The samples were collected with hammer and cold chisel and the two chip samples were taken perpendicular to the apparent dip of the mineralized zone disseminated throughout.

13.0 INTERPRETATION AND CONCLUSIONS

Disseminated to semi massive clots of pyrite occur in a clay-sericite altered quartz monzonite intrusive. In some areas the intrusive is porphyritic suggesting a porphyry Cu or Au environment. The values found to date do not support this model.

14.0 RECOMMENDATIONS

The 2006 program is disappointing for the search for gold or copper. The property could use more work as the pyrite mineralization is quite extensive. It is recommended that no further be conducted at this time.

15.0 PERSONELL AND CONTRACTORS

<u>Company Personnel</u>	<u>Position</u>	<u>Days</u>	<u>Dates</u>
------------------------------	-----------------	-------------	--------------

Len Harris	President		
------------	-----------	--	--

<u>Contract Personnel</u>			
-------------------------------	--	--	--

James A. Turner Surrey, BC	Consultant, Director		
-------------------------------	----------------------	--	--

Francis LaRoche Kamloops, BC	Prospector		
---------------------------------	------------	--	--

Rick Unruth	Prospector		
Dale LaRoche	Field Assistant		

16.0 COST STATEMENT 2006

Table 3: Cost Statement-BOOTAHNIE Property-2006

<u>Field Costs</u>	<u>Days</u>	<u>Rate</u>	<u>Total</u>
Francis LaRoche	13	260.00	\$3,380.00
Rick Unruth	4	200.00	\$800.00
Gerry Diakow	0	260.00	\$0.00
Truck	7.5	90.00	\$675.00
Motel			\$854.37

Fuel			\$408.96
Food			\$311.44

Maps	QuickBird Image+processing		
Supplies			\$20.00
ATV	7.5	90.00	\$675.00

Helicopter

Fees

Len Harris	1	450.00	\$450.00
------------	---	--------	----------

Project Geologist(Jim Turner,P.Geo)	1	400.00	\$400.00
May	3	400.00	\$1,200.00
Aug			

For LH & JT	Motel&Food	150	\$150.00
	Truck Rental	1	\$90.00

**Assays-
Analysis**

4	30.35	\$121.50
17	18.60	\$316.20
10	12.60	\$126.0

Shipping			\$150.00
----------	--	--	----------

Total

			\$10,128.47
Administration @15%			\$1,519.27

Grand Total

\$11,647.74

17.0 DATE

The effective date of this report is August 15, 2006.

18.0 REFERENCES

BALON, E.A. 2005 : 2004 Geochemical, Prospecting and Physical Work Report Sam property (Sam 1-10 Claim Group)., Kamloops Mining Division, BC. (BCGS AR 27642).

DUFFELL, S. AND MCTAGGART, K. C. 1952: Ashcroft Map-Area, British Columbia (BC); Geological Survey of Canada (GSC) Memoir 262, p. 52-58, (Spences Bridge Group and Kingsvale Group),1951:GSC map 1010A: Ashcroft, BC; scale 1:253,440.

- HOLLAND, S.L.;1950: Placer Gold Production of British Columbia; BCMEMPR Bulletin 28, reprinted 1980.
- JACKAMAN, W. AND MATYSEK, P. F.: 1994: British Columbia Regional Geochemical Survey, NTS 921 - Ashcroft, (BC RGS 40/GSC OF 2666), Stream Sediment and Water Geochemical Maps & Data.
- MONGER, J. W. H. AND MCMILLAN, W. J.: 1989: Geology, Ashcroft BC; GSC Map 42-1989, sheet 1, scale 1:250,000.
- MONGER, J. W. H.: 1989: Geology, Hope, BC; GSC Map 41-1989, sheet 1, scale 1:250,000.,1985: Structural Evolution of the Southwestern Intermontane Belt, Ashcroft and Hope Map Areas, BC, in Current Research, Part A, GSC Paper 85-1 A, p. 349-358.: 1981: Geology of Parts of Western Ashcroft Map Area, southwestern BC; in Current Research, Part A, GSC Paper 81 -1 A, p.185-189.
- RICE, H. M. A.:1947: Geology and Mineral Deposits of the Princeton Map-Area, BC; GSC Memoir 43.
- RYDER, J. M.: 1975: Quaternary Geology - Terrain Inventory, Lytton Map-Area, BC (921/SW); in Current Research, Part A, GSC Paper 75-1 A.
- SCHROETER, T. G. AND PINSENT, R. H.: 2001: Gold Production and Resources in British Columbia (1858-1998); unedited updated "Information Package" on BCMEM Open File 2000-2.
- SOUTHER, J. G.; GABRIELSE, H. AND YORATH, C.J (ed).: 1991: Volcanic Regimes, Chapter 14 in Geology of the Cordilleran Orogen in Canada, Geology of Canada, no.4, p. 457-490 (also Geological Society of America, The Geology of North America, v. G-2).
- THORKELSON, D. J.1985: Geology of the Mid-Cretaceous Volcanic Units near Kingsvale, southwestern BC; in Current Research, Part B, GSC Paper 85-1 B, p. 333-339.

19.0 CERTIFICATE OF THE WRITER

CERTIFICATE OF James A. Turner, P.Geol.

I, James A. Turner, P.Geol., am a Professional Geoscientist of South Surrey, British Columbia, hereby certify that:

1. I am a geologist residing at 14149-17A Avenue, Surrey, British Columbia.
2. I am a graduate of the University of British Columbia with a Bachelor of Science Degree in Physics, Math and Geology in 1973 and 1976 and have practiced my profession since 1976 and continuously since 1980.
3. From 1998 to June 2001 I was a consultant to Pacific Geomatics Inc., a private remote sensing company specializing in data acquisition, processing and interpretation.
4. From March 1995 to April 1998 I was a principal of TerraSat Geomatics Inc., a private company, specialising in satellite imaging and its application to mining exploration.
5. From 1990 to March 1995, I subcontracted my services as an image analyst to MineQuest Exploration Associates Inc.
6. I am a registered member of the Professional Engineers and Geoscientists of British Columbia, (Registration #19843).
7. I am a fellow of the Geological Association of Canada.
8. I am the sole author of this report and my compensation is strictly on a professional fee basis. I am also responsible for this entire report.
9. I am presently a Consulting Geologist and have been so since March 1989. As a result of my experience and qualifications I am a qualified person as defined in National Instrument 43-101.
10. Since 1976 I have been involved in mineral exploration (with major mining companies such as Cominco, Noranda and Newmont) for Emerald, lead, zinc, gold, silver, tungsten, tin and diamonds. I have been involved in remote sensing and Geomatics since 1984. Since 1990 I have been involved in remote sensing and satellite interpretation for diamond deposits in the Lac de Gras area of the NWT. I have also conducted remote sensing work for companies working in Ghana, Guyana, Mali, Alberta, British Columbia, Mexico, Vietnam, China, Ireland, Arizona, Utah, Nevada, Bolivia, Chile, Peru, Nunavut, Quebec, Central America, Brazil, India and Indonesia.

11. I have read several reports and historic documents, and am familiar with the subject matter of the report.
12. In the disclosure of information relating to the BOOTAHNIE property. I have relied on information provided to me by Anglo-Canadian Uranium Corp.
13. I am not aware of any material fact or material change with respect to the subject matter of this technical report, which is not reflected in this report, the omission to disclose which would make this report misleading.
14. **I, in the company of Len Harris, of Anglo, examined the BOOTAHNIE Property in August of 2006 and verified certain exposures of rock on the present location of the claims. I verified the location of the claims and the locations of the targets and certain rock exposures discussed in the technical report. I supervised the program and am responsible for the entire project. This includes work conducted, in my absence.**
15. I have no interest, direct or indirect, in the BOOTAHNIE Property or the property ownerships, nor do I expect to receive such interest. I am a Director of Anglo-Canadian Uranium Corp. and have 100,000 options in the company.

James A. Turner, P.Ge.

James A. Turner, P. Ge.

Signed

James A. Turner, P. Ge.

14149-17A Avenue

Surrey B.C.

V4A 6R8

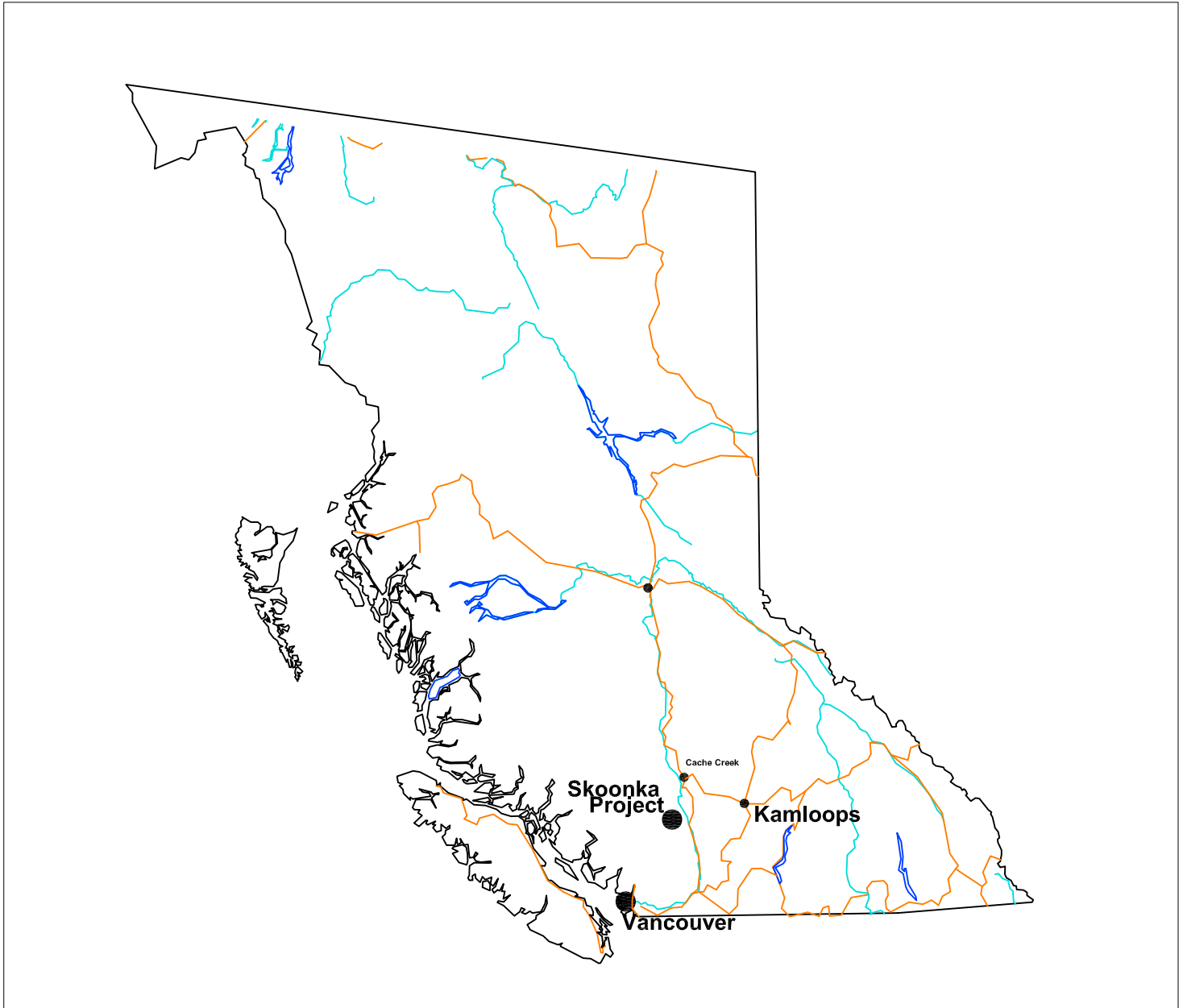
Signed and sealed at Vancouver
James A. Turner, P. Ge.

Dated at Surrey, B.C. this 15th day of

August 2006.

Reg. No. 19843 Association of
Professional Engineers and Geoscientists of
British Columbia.

- 20.0 ILLUSTRATIONS**
- 21.0 APPENDICES**
- I Assays**
- I Rock Sample Descriptions**



ANGLO-CANADIAN URANIUM CORP.

Kamloops Mining Division
British Columbia

SKOONKA PROJECT

LOCATION MAP
BOOTAHNIE PROPERTY

Universal Transverse Mercator
Zone 10
NAD 83 Datum

Figure 1

James A Turner, P.Geo

Exploration Assistant

Mineral Titles Layers

-  MTO Mineral Titles Online Labels <200K
-  Placer
-  Mineral

Topographic Layers

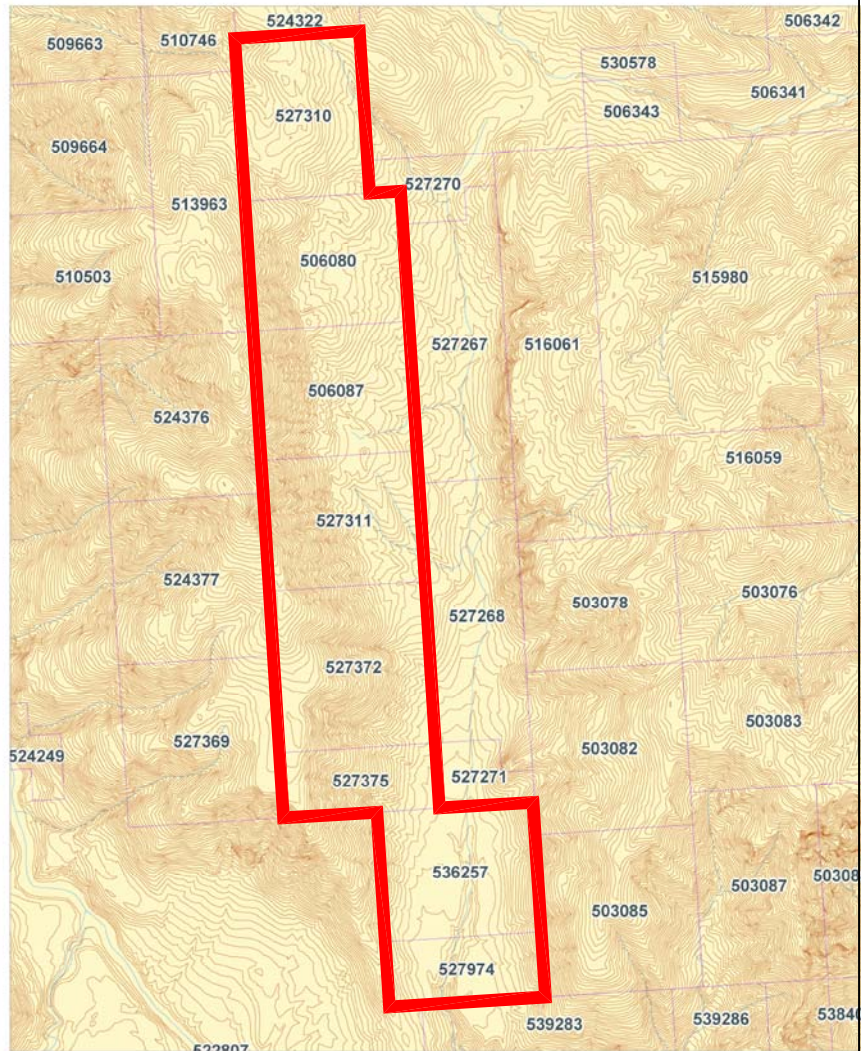
-  Contours east 1:20K (<100K)
-  Rivers 1:50K (<300K)
-  Border line 1:250K (<2M)

Grid Layers

-  Grid 1:250K maps - outline

BC Border Layers

-  BC Border 1:50K (<200K)



SCALE 1 : 104,541



from: The Map Place
Bootahnie Property



Figure 2 Claim Location

BC Administrative Area Layers

- ▲ **BC Communities**
- City
- Town
- Village
- Resort Municipality
- ◆ Settlement
- ◆ Community
- ▲ District Municipality

Mineral Titles Layers

- MTO Mineral Titles Online Polygons**
- Placer
- Mineral

Topographic Layers

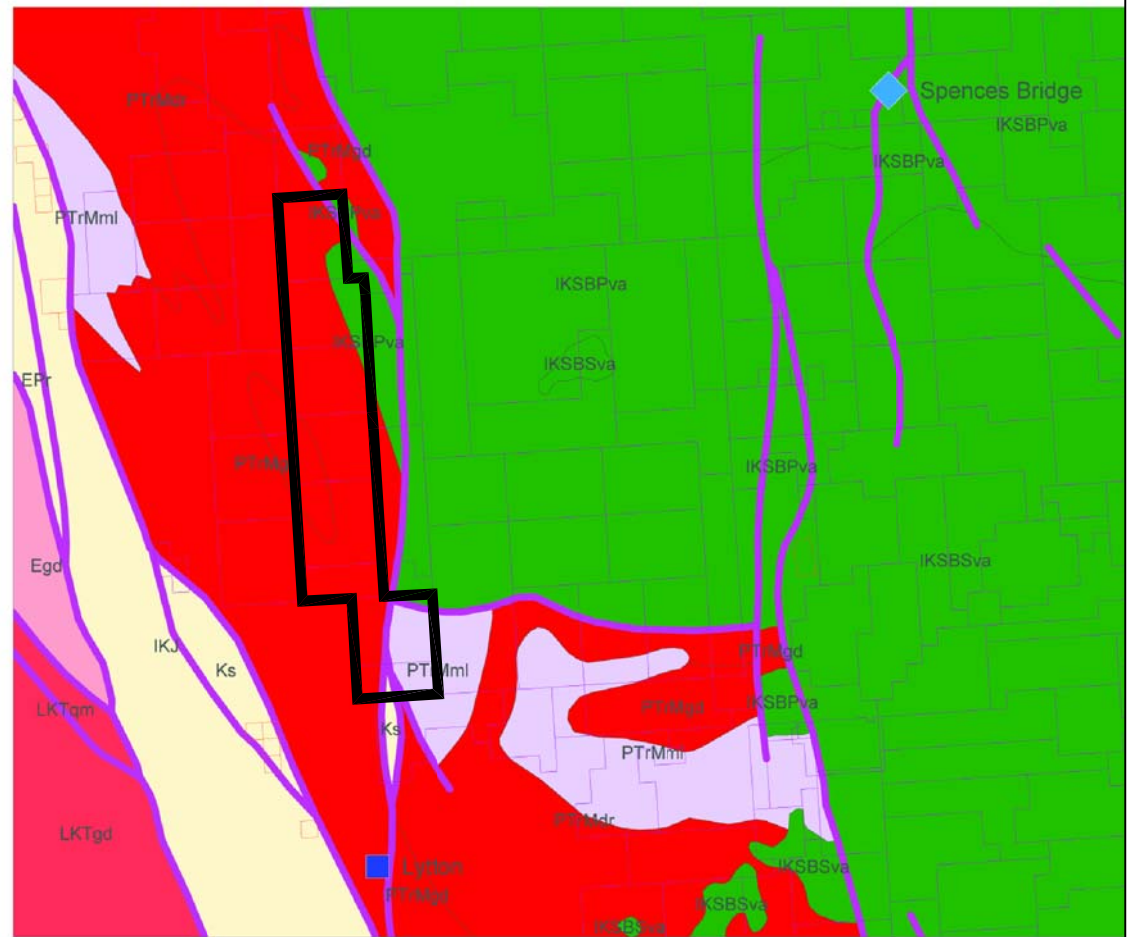
- Border line 1:250K (<2M)**

Grid Layers

- Grid 1:250K maps - outline**

BCGS Geology Layers 2005

- Contacts & Faults (<1.5M)**



SCALE 1 : 253,370



from: The Map Place
BOOTAHNIE PROPERTY
Figure 3 Regional Geology

600,000

600,500

601,000

601,500

602,000

602,500

5,584,000N

5,583,500

5,583,000

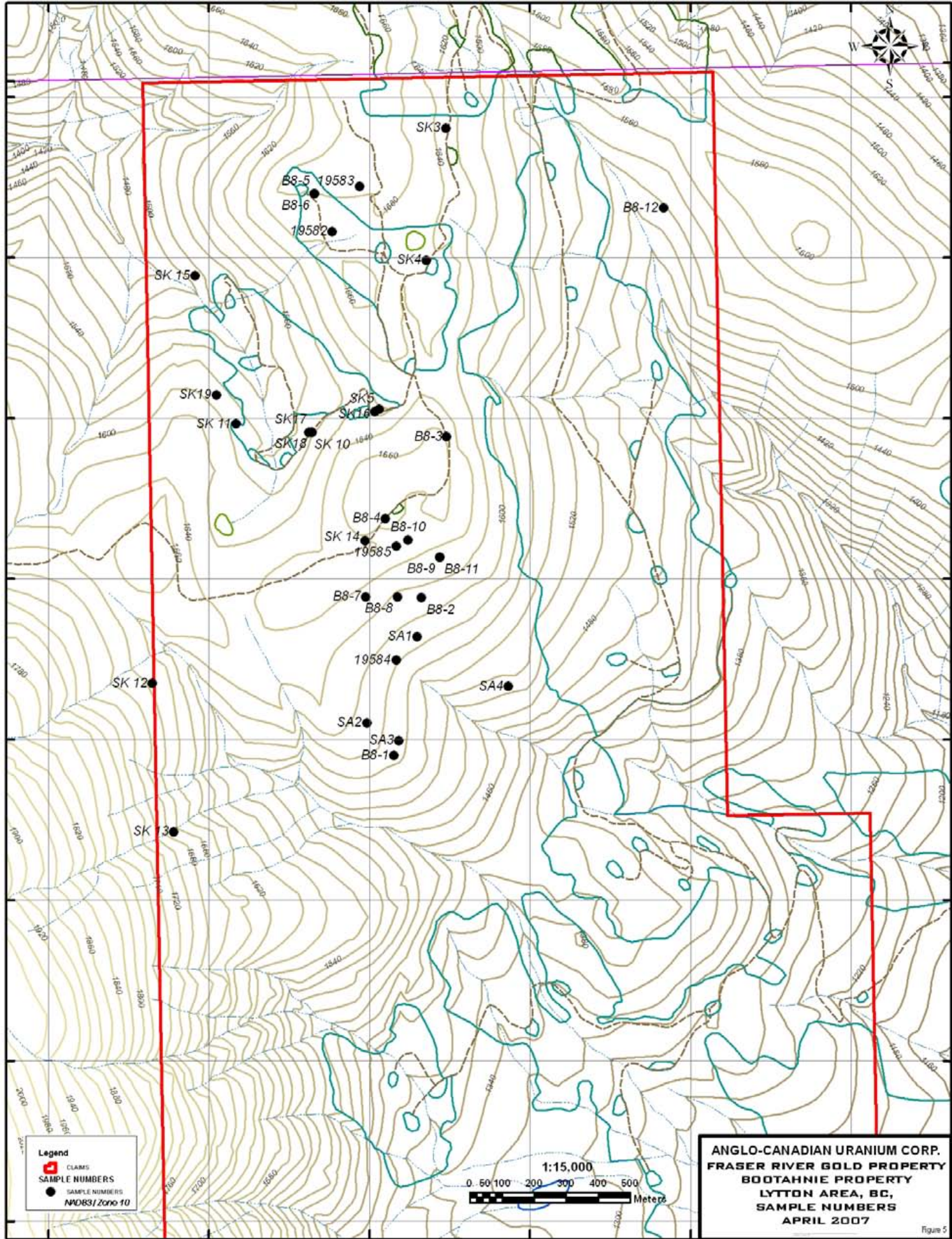
5,582,500

5,582,000

5,581,500

5,581,000

5,580,500



Legend

- CLAIMS
- SAMPLE NUMBERS
- SAMPLE NUMBERS
- NAD83 Zone 10

1:15,000

0 50 100 200 300 400 500 Meters

ANGLO-CANADIAN URANIUM CORP.
FRASER RIVER GOLD PROPERTY
BOOTAHNIE PROPERTY
LYTTON AREA, BC,
SAMPLE NUMBERS
APRIL 2007

600,000

600,500

601,000

601,500

602,000

602,500

5,584,000N

5,583,500

5,583,000

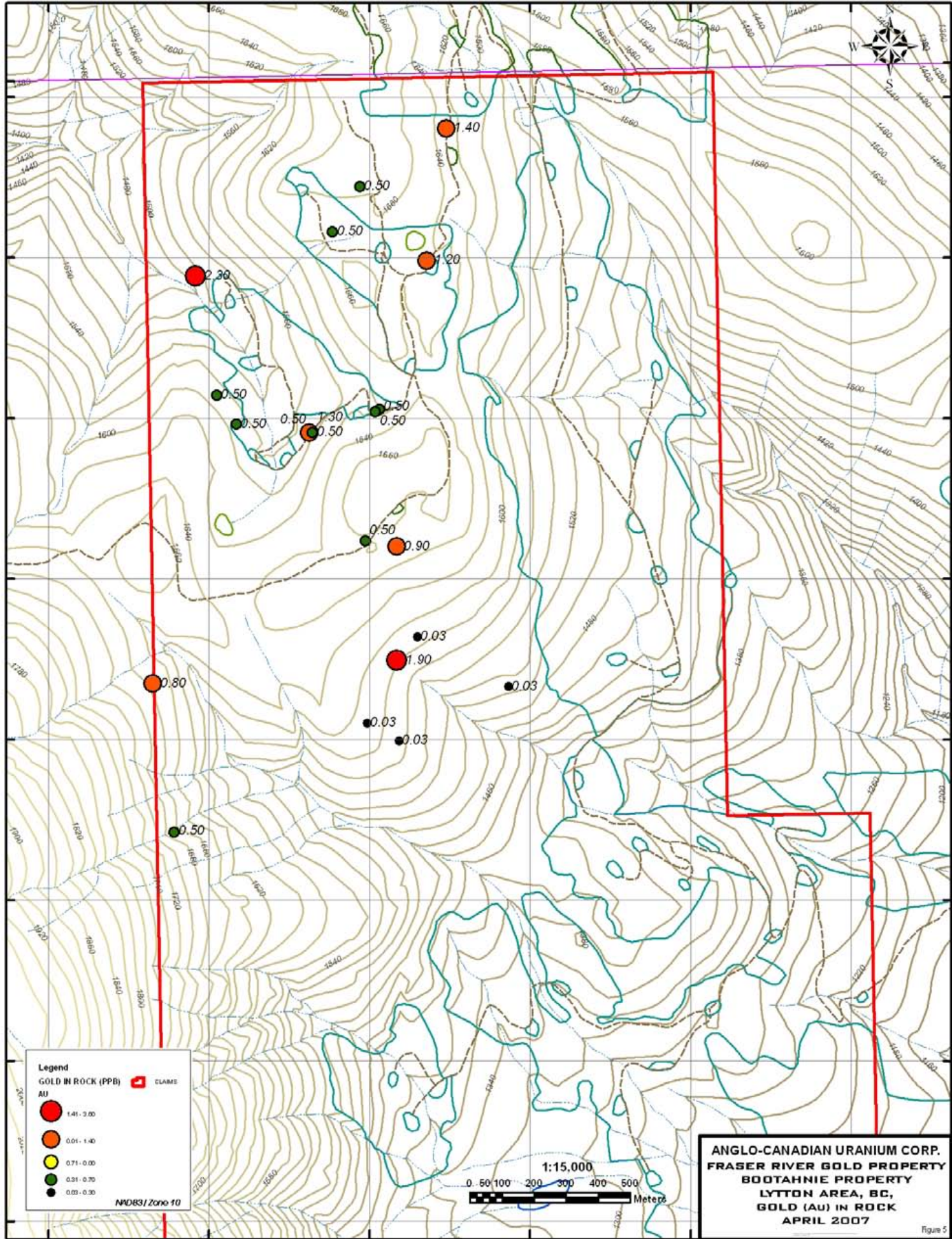
5,582,500

5,582,000

5,581,500

5,581,000

5,580,500



Legend

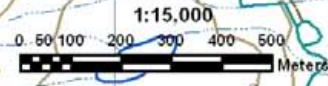
GOLD IN ROCK (PPB)

- 1.41 - 3.00
- 0.01 - 1.40
- 0.71 - 0.00
- 0.31 - 0.70
- 0.00 - 0.30

AU

- CLAIMS

NAD83 Zone 10



ANGLO-CANADIAN URANIUM CORP.
FRASER RIVER GOLD PROPERTY
BOOTAHNIE PROPERTY
LYTTON AREA, BC,
GOLD (AU) IN ROCK
APRIL 2007

600,000

600,500

601,000

601,500

602,000

602,500

5,584,000N

5,583,500

5,583,000

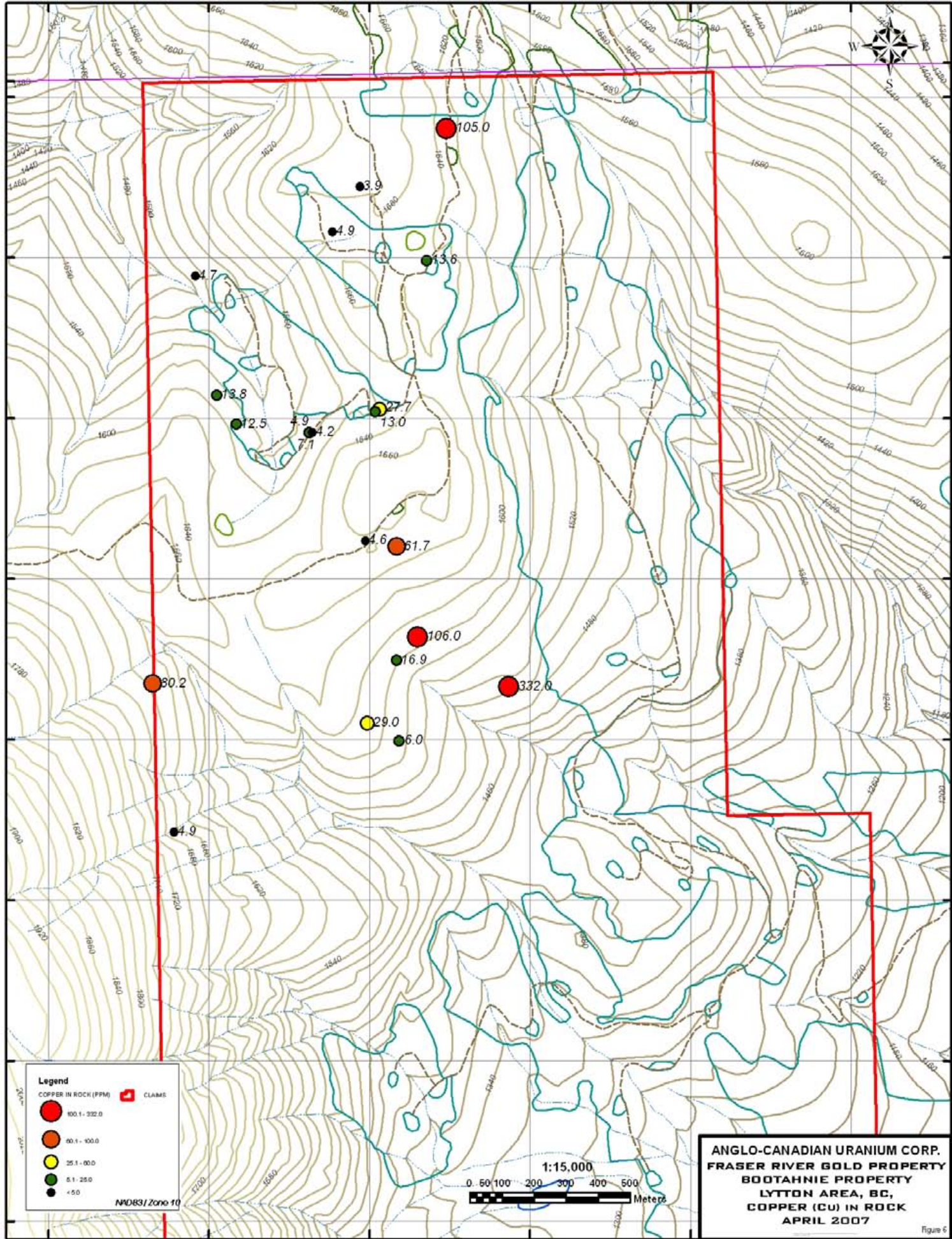
5,582,500

5,582,000

5,581,500

5,581,000

5,580,500



Legend

COPPER IN ROCK (PPM)

- 100.1 - 322.0
- 60.1 - 100.0
- 25.1 - 60.0
- 6.1 - 25.0
- < 5.0

CLAMS

NAD83 Zone 10

1:15,000

0 50 100 200 300 400 500 Meters

ANGLO-CANADIAN URANIUM CORP.
FRASER RIVER GOLD PROPERTY
BOOTAHNIE PROPERTY
LYTTON AREA, BC,
COPPER (CU) IN ROCK
APRIL 2007

600,000

600,500

601,000

601,500

602,000

602,500

5,584,000N

5,583,500

5,583,000

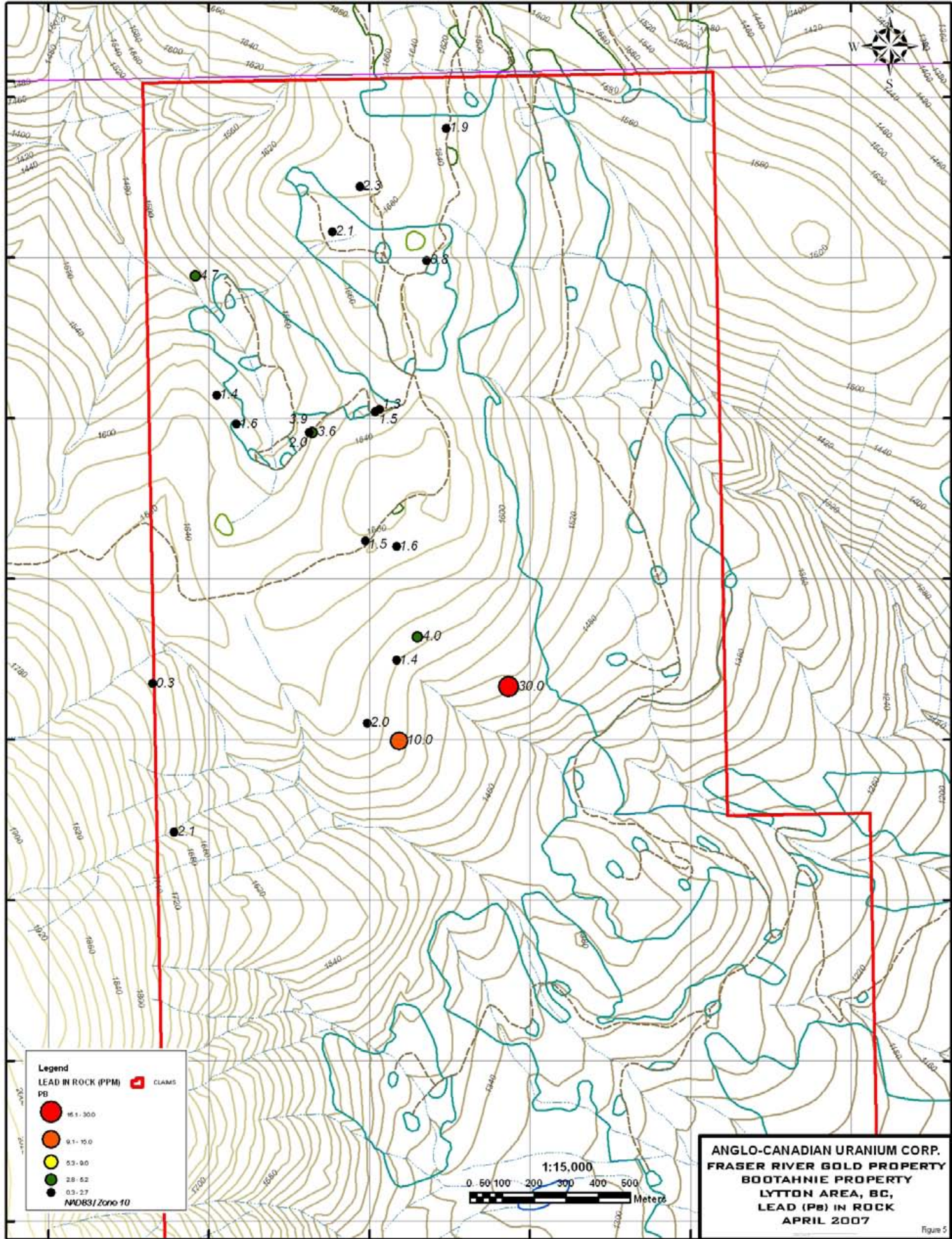
5,582,500

5,582,000

5,581,500

5,581,000

5,580,500



Legend

LEAD IN ROCK (PPM)  CLAMS

Pb

-  16.1 - 30.0
-  9.1 - 15.0
-  5.3 - 9.0
-  2.8 - 5.2
-  0.3 - 2.7

 NAD83 Zone 10

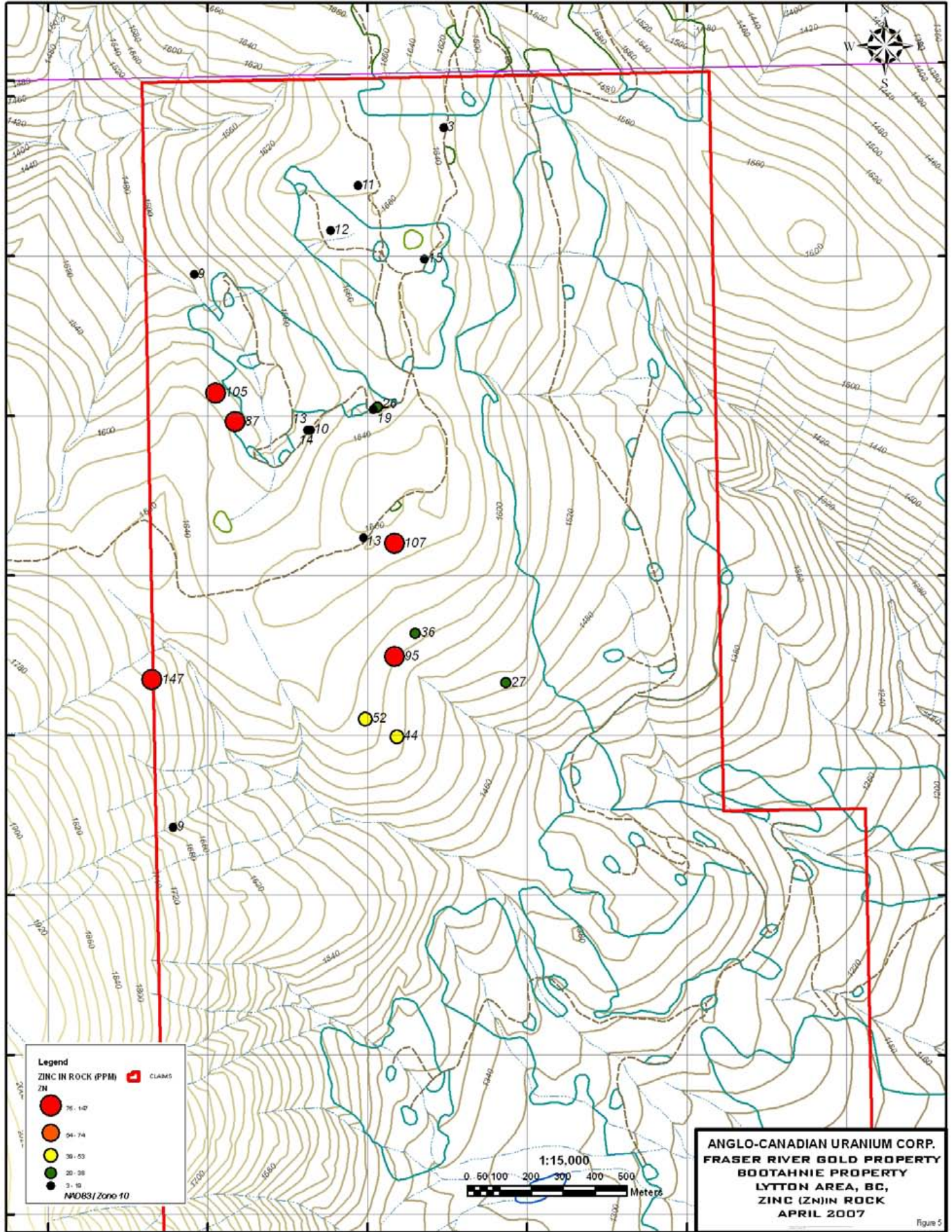
1:15,000

0 50 100 200 300 400 500 Meters

ANGLO-CANADIAN URANIUM CORP.
FRASER RIVER GOLD PROPERTY
BOOTAHNIE PROPERTY
LYTTON AREA, BC,
LEAD (Pb) IN ROCK
APRIL 2007

600,000 600,500 601,000 601,500 602,000 602,500

5,584,000N
5,583,500
5,583,000
5,582,500
5,582,000
5,581,500
5,581,000
5,580,500



Legend

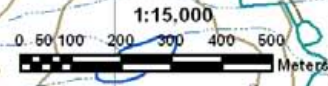
ZINC IN ROCK (PPM)

Zn

- 76 - 147
- 54 - 74
- 36 - 53
- 20 - 35
- 3 - 19

NAD83 Zone 10

■ CLAIMS



ANGLO-CANADIAN URANIUM CORP.
FRASER RIVER GOLD PROPERTY
BOOTAHNIE PROPERTY
LYTTON AREA, BC,
ZINC (Zn) IN ROCK
APRIL 2007

From:ECO TECH LAB

2505734557

05/24/2006 05:13 #045 P.001/001



ASSAYING
GEOCHEMISTRY
ANALYTICAL CHEMISTRY
ENVIRONMENTAL TESTING

10041 Dallas Drive, Kamloops, BC V2C 8T4
Phone (250) 873-6700 Fax (250) 873-4857
E-mail: info@ecotechlab.com
www.ecotechlab.com

Anglo Canadian Uranium
2589 Thompson drive
Kamloops, BC
V2C 4L5

22-May-06

Attention: Frank LaRoche

2006 INVOICE

INVOICE #:AK 06-381

DESCRIPTION	PRICE / SAMPLE	AMOUNT
4 SAMPLE PREP. (ROCK)	6.50	26.00
4 MULTI-ELEMENT ICP (28)	7.00	28.00
3 AU ASSAY (30g)	12.50	37.50
1 AU/PD/PT ASSAY	30.00	30.00
	SUBTOTAL:	121.50
	& 7% G.S.T:	8.51
	TOTAL DUE & PAYABLE UPON RECEIPT:	130.01

THANK YOU!!

G.S.T. REGISTRATION NUMBER R99289 8212

**TERMS: NET 30 DAYS. INTEREST AT RATE OF 2 PER MONTH (24% PER ANNUM)
WILL BE CHARGED ON OVERDUE ACCOUNTS.**



ACME ANALYTICAL LABORATORIES LTD.
 852 East Hastings,, Vancouver, B.C., CANADA V6A 1R6
 Phone: (604) 253-3158 Fax: (604) 253-1716
 Our GST # 100035377 RT



ANGLO-CANADIAN URANIUM CORP.
 1150 - 355 Burrard St.
 Vancouver, BC
 V6C 2G8

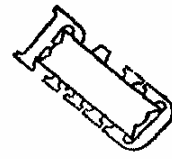
Inv.#: **A602232**
 Date: **May 26 2006**

QTY	ASSAY	PRICE	AMOUNT
9	GROUP 3B - AU @	10.71	96.39
5	R150 - ROCK @	5.10	25.50
2	SS80 - SOIL @	1.58	3.16
1	SS80 - SILT @	1.58	1.58
			<hr/>
		GST Taxable	126.63
		7.00% GST	8.86
			<hr/>
		CAD \$	135.49

Samples submitted by Len Harris
 FILE # A602232, A602233 & A602234

*Flora
 Skoobla*

COPIES 1



Please pay last amount shown. Return one copy of this invoice with payment.
 TERMS: Net two weeks. 1.5 % per month charged on overdue accounts.

[COPY 2]

ACME ANALYTICAL LABORATORIES LTD.
(ISO 9001 Accredited Co.)

852 E. HASTINGS ST. VANCOUVER BC V6A 1R6

PHONE (604) 253-3158 FAX (604) 253-1716



GEOCHEM PRECIOUS METALS ANALYSIS



Anglo-Canadian Uranium Corp.
1150 - 355 Burrard St., Vancouver BC V6C 2G8

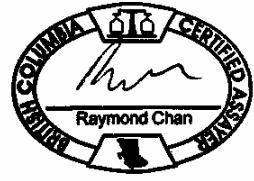
File # A602234
Submitted by: Len Harris

SAMPLE#	Au** ppb
G-1	<2
19557	<2
STANDARD OxF41	795

GROUP 3B - FIRE GEOCHEM AU - 7.5 GM SAMPLE FUSION, DORE DISSOLVED IN AQUA - REGIA, ICP ANALYSIS. UPPER LIMITS = 10 PPM.
- SAMPLE TYPE: Silt SS80 60C

05-25-2006 P04:22

Data 1 PA _____ DATE RECEIVED: MAY 19 2006 DATE REPORT MAILED:.....



All results are considered the confidential property of the client. Acme assumes the liabilities for actual cost of the analysis only.

ACME ANALYTICAL LABORATORIES LTD. (ISO 9001 Accredited Co.) 852 E. HASTINGS ST. VANCOUVER BC V6A 1R6 PHONE (604) 253-3158 FAX (604) 253-1716



GEOCHEM PRECIOUS METALS ANALYSIS

Anglo-Canadian Uranium Corp. File # A602232
 1150 - 355 Burrard St., Vancouver BC V6C 2B8 submitted by: Len Harris

SAMPLE#	Au** ppb
G-1	2
19551	4
19553	2
19554	2
19555	<2
19556	36
19558	5
STANDARD OxF41	796

GROUP 38 - FIRE GEOCHEM AU - 30 GM SAMPLE FUSION, DORE DISSOLVED IN AQUA - REGIA, ICP ANALYSIS. UPPER LIMITS = 10 PPM.
 - SAMPLE TYPE: Rock R150

05-26-2006 A11:56

Data *lyfa* DATE RECEIVED: MAY 19 2006 DATE REPORT MAILED:



All results are considered the confidential property of the client. Acme assumes the liabilities for actual cost of the analysis only.



SAMPLE#	Mo ppm	Cu ppm	Pb ppm	Zn ppm	Ag ppm	Ni ppm	Co ppm	Mn ppm	Fe %	As ppm	U ppm	Au ppm	Th ppm	Sr ppm	Cd ppm	Sb ppm	Bi ppm	V ppm	Ca %	P %	La ppm	Cr ppm	Hg %	Ba ppm	Ti %	B ppm	Al %	Na %	K %	W ppm
G-1	<1	<1	<3	35	<.3	4	5	519	1.80	<2	8	<2	3	70	.5	<3	<3	31	.54	.068	8	10	.52	207	.13	<3	.97	.09	.50	<2
B184794	7	1	3	19	.5	1	3	241	1.57	8	<8	<2	<2	26	.7	<3	<3	16	.19	.081	7	6	.21	37	.05	<3	.53	.03	.11	<2
B184795	4	<1	<3	2	.3	1	1	128	.82	<2	<8	<2	<2	11	<.5	<3	<3	1	.19	.110	5	16	.02	15	.01	<3	.09	.01	.02	<2
B184796	21	<1	7	79	1.3	1	3	353	1.69	85	<8	<2	<2	11	<.5	<3	<3	14	.09	.065	14	7	.64	38	<.01	<3	.77	.02	.13	<2
B184797	32	3	3	18	2.8	1	2	121	1.35	89	<8	<2	<2	44	<.5	<3	<3	13	.09	.059	14	7	.30	62	<.01	<3	.55	.03	.16	<2
B184798	14	19	4	14	35.4	2	2	168	.90	38	9	<2	<2	9	.5	<3	<3	6	.23	.026	4	13	.35	21	<.01	<3	.41	.01	.09	<2
B184799	47	2	9	21	1.8	<1	2	184	1.60	88	<8	<2	<2	12	<.5	<3	<3	16	.08	.066	11	6	.50	31	<.01	<3	.63	.03	.18	<2
B184800	6	3	10	40	1.2	<1	3	300	1.82	76	<8	<2	<2	17	<.5	<3	<3	15	.13	.079	10	5	.48	44	<.01	<3	.76	.03	.20	<2
B184844	8	1	9	40	.8	<1	2	355	1.88	106	<8	<2	<2	43	<.5	<3	<3	31	.20	.082	14	4	.63	51	.15	<3	.89	.04	.16	<2
B184845	8	2	7	40	.7	1	1	299	1.77	79	<8	<2	<2	21	.5	<3	<3	23	.28	.075	8	5	.50	34	.19	<3	.83	.04	.14	<2
B184846	12	3	11	47	.9	<1	2	349	2.11	95	8	<2	<2	19	.6	<3	<3	30	.29	.092	12	5	.57	38	.20	<3	.95	.05	.14	2
B184847	6	18	3	40	1.0	2	2	430	2.06	65	<8	<2	<2	20	<.5	<3	<3	24	.34	.084	12	6	.71	42	.18	<3	.99	.05	.17	<2
B184848	30	<1	8	18	.8	1	1	177	1.35	60	<8	<2	<2	28	<.5	<3	<3	16	.16	.055	11	5	.30	46	.13	<3	.54	.04	.16	<2
RE B184848	31	<1	11	18	.8	<1	1	179	1.37	64	<8	<2	<2	29	<.5	<3	<3	18	.16	.057	11	4	.30	47	.13	<3	.55	.04	.17	<2
STANDARD DS6	12	121	29	140	.4	25	13	703	2.83	21	<8	<2	3	41	6.4	3	5	57	.86	.080	14	188	.58	168	.08	16	1.93	.07	.15	5

Sample type: ROCK R150. Samples beginning 'RE' are Returns and 'RRE' are Reject Returns.



GEOCHEMICAL ANALYSIS CERTIFICATE

Anglo-Canadian Uranium Corp. File # A602705 Page 1

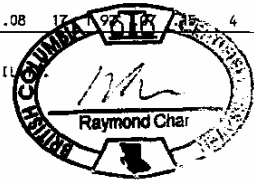
1150 - 355 Burrard St., Vancouver BC V6C 2G8 Submitted by: Len Harris



SAMPLE#	Mo	Cu	Pb	Zn	Ag	Ni	Co	Mn	Fe	As	U	Au	Th	Sr	Cd	Sb	Bi	V	Ca	P	La	Cr	Mg	Ba	Ti	B	Al	Na	K	W
	ppm	ppm	ppm	ppm	ppm	ppm	ppm	ppm	%	ppm	ppm	ppm	ppm	ppm	ppm	ppm	ppm	ppm	%	%	ppm	ppm	%	ppm	%	%	%	%	%	ppm
G-1	1	3	6	48	.3	4	4	562	1.94	5	<8	<2	4	68	.8	<3	<3	36	.57	.073	9	12	.56	216	.13	<3	1.00	.09	.49	2
B184761	4	5	8	34	.9	2	3	285	1.78	35	<8	<2	<2	14	.6	<3	<3	4	.45	.072	18	3	.02	100	<.01	3	.34	.03	.21	2
B184762	3	13	10	42	.4	2	3	305	2.30	10	<8	<2	<2	32	.5	<3	<3	31	.30	.098	15	2	.36	58	.17	<3	.96	.06	.16	2
B184763	5	12	15	35	.5	1	3	219	2.40	15	<8	<2	<2	31	<.5	<3	<3	26	.26	.104	8	2	.27	70	.14	<3	.90	.04	.19	<2
B184764	2	11	6	43	.3	3	3	340	2.38	13	<8	<2	<2	33	<.5	<3	<3	33	.35	.097	10	2	.38	55	.17	<3	1.06	.06	.15	2
B184765	4	7	8	35	.6	1	2	234	2.60	17	<8	<2	<2	35	<.5	<3	<3	36	.25	.101	9	2	.33	61	.19	<3	.89	.06	.15	<2
B184766	3	12	7	41	.3	1	2	293	2.21	15	<8	<2	<2	45	<.5	<3	3	39	.29	.095	13	2	.42	77	.21	<3	1.09	.06	.16	2
B184767	8	6	8	29	.3	1	3	220	1.95	13	<8	<2	<2	32	<.5	<3	<3	25	.31	.108	10	3	.23	57	.17	<3	.92	.05	.15	<2
B184768	5	6	9	26	.4	1	2	186	1.72	8	<8	<2	<2	31	<.5	<3	<3	24	.18	.079	10	6	.23	57	.14	<3	.73	.05	.13	2
B184769	3	12	7	53	.3	4	5	398	2.45	12	<8	<2	<2	41	.8	<3	3	38	.51	.110	11	4	.37	66	.18	3	1.25	.05	.12	2
B184770	3	13	8	54	.3	2	5	458	2.58	12	12	<2	<2	32	<.5	<3	<3	38	.36	.110	12	3	.46	74	.19	<3	1.09	.05	.14	2
B184771	1	12	8	64	.3	2	4	352	2.39	9	<8	<2	<2	33	<.5	<3	<3	37	.34	.102	18	2	.36	68	.20	<3	1.21	.05	.16	3
B184772	2	9	9	58	<.3	2	4	359	2.20	12	<8	<2	<2	33	.5	<3	<3	35	.35	.099	16	2	.30	70	.19	<3	1.16	.05	.16	2
B184773	4	9	6	38	.5	2	4	298	2.44	10	<8	<2	<2	39	<.5	<3	<3	29	.26	.111	9	3	.23	80	.18	<3	1.09	.04	.17	<2
B184774	3	7	7	30	.5	1	3	206	2.17	16	<8	<2	<2	31	<.5	<3	<3	29	.26	.098	7	2	.17	65	.20	<3	.82	.05	.15	2
B184775	1	13	8	52	.3	2	3	394	2.41	12	<8	<2	<2	31	<.5	<3	<3	44	.32	.104	10	2	.38	67	.20	<3	1.07	.06	.09	<2
B184776	1	9	7	56	<.3	2	4	436	2.41	7	<8	<2	<2	41	<.5	<3	<3	43	.47	.112	17	3	.47	53	.22	<3	1.17	.06	.10	2
RE B184776	1	9	6	56	.3	2	3	425	2.35	10	<8	<2	<2	40	<.5	<3	<3	44	.47	.109	17	3	.46	52	.22	<3	1.12	.05	.10	2
B184777	2	14	10	74	<.3	2	6	633	2.31	16	<8	<2	<2	38	<.5	<3	<3	40	.51	.112	11	3	.54	63	.22	3	1.38	.05	.07	<2
B184778	<1	24	12	60	.3	2	3	426	2.32	13	<8	<2	<2	40	<.5	<3	<3	44	.43	.101	13	2	.51	58	.22	<3	1.23	.06	.10	<2
B184779	1	12	10	44	<.3	2	2	321	2.19	24	<8	<2	<2	40	<.5	<3	<3	39	.35	.094	10	3	.39	61	.20	<3	1.15	.05	.09	<2
B184780	3	9	10	38	<.3	3	2	306	2.32	13	<8	<2	<2	52	<.5	<3	<3	41	.40	.116	10	2	.35	74	.20	<3	1.19	.05	.11	<2
B184781	2	8	10	36	.3	1	2	268	2.28	13	<8	<2	<2	41	<.5	<3	<3	43	.37	.101	11	3	.30	74	.22	<3	1.07	.05	.13	2
B184782	3	18	6	62	.4	2	4	409	2.63	16	<8	<2	<2	32	.5	<3	<3	47	.31	.119	11	2	.38	73	.23	<3	1.28	.05	.15	<2
B184783	3	16	4	48	<.3	2	2	422	2.27	19	<8	<2	<2	34	.5	<3	<3	42	.41	.104	9	2	.47	64	.24	<3	1.28	.06	.11	2
B184784	3	10	8	59	<.3	2	3	419	2.26	20	<8	<2	<2	29	<.5	<3	<3	40	.35	.105	10	2	.45	81	.22	<3	1.10	.05	.12	<2
B184785	5	8	5	40	.3	1	2	277	2.24	18	<8	<2	<2	32	<.5	<3	<3	30	.31	.107	10	1	.31	73	.22	<3	.95	.05	.14	<2
B184786	8	7	10	19	.4	1	1	119	1.90	20	<8	<2	<2	26	.5	<3	<3	21	.25	.099	7	2	1.10	88	.19	<3	.79	.04	.20	<2
B184787	6	8	8	27	.6	1	2	258	2.50	15	<8	<2	<2	44	<.5	<3	<3	27	.31	.112	9	1	.24	80	.21	8	.85	.05	.18	<2
B184788	6	8	6	27	.6	1	2	244	2.85	18	<8	<2	<2	42	<.5	<3	<3	30	.35	.129	9	1	.20	83	.20	3	1.04	.05	.17	<2
B184789	14	5	6	12	.7	1	2	77	1.91	14	<8	<2	<2	31	<.5	<3	<3	16	.15	.081	5	2	.05	93	.15	4	.57	.02	.21	<2
B184790	13	6	3	11	.8	2	1	43	2.11	18	<8	<2	<2	26	<.5	<3	<3	16	.15	.092	6	4	.04	85	.17	<3	.55	.03	.20	<2
B184791	14	5	7	13	.8	1	2	119	2.32	19	<8	<2	<2	29	<.5	<3	<3	20	.18	.092	6	2	1.0	98	.15	4	.70	.03	.22	2
B184792	7	10	9	17	.7	1	1	115	2.56	14	<8	<2	<2	23	<.5	<3	<3	8	.10	.088	5	<1	.11	93	.19	<3	.82	.03	.21	2
B184793	2	9	13	18	.3	1	2	145	2.75	14	<8	<2	<2	77	<.5	<3	<3	17	.53	.114	6	<1	.11	138	.18	3	1.22	.06	.19	<2
STANDARD DS6	11	125	27	145	<.3	25	11	691	2.79	21	8	<2	3	41	6.0	4	6	55	.85	.078	14	186	.56	165	.08	17	1.25	.05	.12	4

GROUP 10 - 0.50 GM SAMPLE LEACHED WITH 3 ML 2-2-2 HCL-HNO3-H2O AT 95 DEG. C FOR ONE HOUR, DILUTED TO 10 ML, ANALYSED BY ICP-ES.
(>) CONCENTRATION EXCEEDS UPPER LIMITS. SOME MINERALS MAY BE PARTIALLY ATTACKED. REFRACTORY AND GRAPHITIC SAMPLES CAN LIMIT AU SOLUBILITY.
ASSAY RECOMMENDED FOR ROCK AND CORE SAMPLES IF CU PB ZN AS > 1%, AG > 30 PPM & AU > 1000 PPB
- SAMPLE TYPE: ROCK R150 Samples beginning 'RE' are Retruns and 'RRE' are Reject Retruns.

Data FA DATE RECEIVED: JUN 12 2006 DATE REPORT MAILED: 06-21-2006 P01:21



All Results are considered the confidential property of the client. Acme assumes the liabilities for actual cost of the analysis only.



ACME ANALYTICAL LABORATORIES LTD.

852 East Hastings, Vancouver, B.C., CANADA V6A 1R6
Phone: (604) 253-3158 Fax: (604) 253-1716
Our GST # 100035377 RT



ANGLO-CANADIAN URANIUM CORP.
1150 - 355 Burrard St.
Vancouver, BC
V6C 2G8

Inv.#: **A602705**
Date: Jun 22 2006

QTY	ASSAY	PRICE	AMOUNT
45	GROUP 1D @	6.39	287.55
45	R150 - ROCK @	5.10	229.50
	GST Taxable		517.05
	7.00% GST		36.19
	CAD \$		553.24

Samples submitted by Len Harris

*32 for Skoovker
see fig 5.Pdf*

COPIES 1

Please pay last amount shown. Return one copy of this invoice with payment.
TERMS: Net two weeks. 1.5 % per month charged on overdue accounts.

[COPY 2]

ACME ANALYTICAL LABORATORIES LTD.
(ISO 9001 Accredited Co.)

852 E. HASTINGS ST. VANCOUVER BC V6A 1R6

PHONE (604) 253-3158 FAX (604) 253-1716



GEOCHEM PRECIOUS METALS ANALYSIS



Anglo-Canadian Uranium Corp. File # A602705R Page 1

1150 - 355 Burrard St., Vancouver BC V6C 2G8 Submitted by: Len Harris

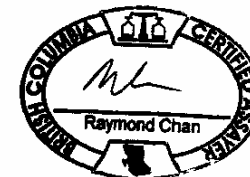
SAMPLE#	Au ppb
B184761	21
B184762	4
B184763	3
B184764	2
B184765	2
B184766	2
B184767	2
B184768	1
B184769	1
B184770	2
B184771	1
B184772	2
B184773	2
B184774	3
B184775	1
B184776	<1
B184777	1
B184778	1
B184779	3
B184780	2
B184781	2
B184782	NNN
B184783	NNN
B184784	NNN
B184785	3
B184786	4
B184787	3
B184788	4
RE B184788	4
B184789	4
B184790	5
B184791	5
B184792	NNN
B184793	NNN
STANDARD OxF41	815

GROUP 38-MS - FIRE GEOCHEM AU - 30 GM SAMPLE FUSION, DORE DISSOLVED IN ACID, ANALYZED BY ICP-MS. SEMI-QUANTITATIVE FOR RH.
- SAMPLE TYPE: Rock Pulp Samples beginning 'RE' are Reruns and 'RRE' are Reject Reruns.

Data f FA

DATE RECEIVED: JUN 26 2006 DATE REPORT MAILED:.....

07-04-2006 A11:42



All results are considered the confidential property of the client. Acme assumes the liabilities for actual cost of the analysis only.



SAMPLE#	Au ppb
B184794	1
B184795	<1
B184796	20
B184797	23
B184798	75
B184799	25
B184800	10
B184844	28
B184845	10
B184846	19
B184847	11
B184848	14
RE B184848	14
STANDARD OxF41	817

Sample type: Rock Pulp. Samples beginning 'RE' are Reruns and 'RRE' are Reject Reruns.

**ACME ANALYTICAL LABORATORIES LTD.**

852 East Hastings,, Vancouver, B.C., CANADA V6A 1R6

Phone: (604) 253-3158 Fax: (604) 253-1716

Our GST # 100035377 RT

**ANGLO-CANADIAN URANIUM CORP.**

1150 - 355 Burrard St.

Vancouver, BC

V6C 2G8

Inv.#: **A602705R**

Date: Jul 5 2006

QTY	ASSAY	PRICE	AMOUNT
45	GROUP 3B-MS - AU @	15.62	702.90
	GST Taxable		702.90
	6.00% GST		42.17
	CAD \$		745.07

Samples submitted by Len Harris
 UNIT PRICE REFLECTS 10% DISCOUNT

COPIES 1 E-DATA 1

Please pay last amount shown. Return one copy of this invoice with payment.
 TERMS: Net two weeks. 1.5 % per month charged on overdue accounts.

[COPY 2]

ACME ANALYTICAL LABORATORIES LTD.
(ISO 9001 Accredited Co.)

852 E. HASTINGS ST. VANCOUVER BC V6A 1R6

PHONE (604) 253-3158 FAX (604) 253-1716



GEOCHEMICAL ANALYSIS CERTIFICATE



Anglo-Canadian Uranium Corp. File # A603551
1150 - 355 Burrard St., Vancouver BC V6C 2G8

SAMPLE#	Mo	Cu	Pb	Zn	Ag	Ni	Co	Mn	Fe	As	U	Au	Th	Sr	Cd	Sb	Bi	V	Ca	P	La	Cr	Mg	Ba	Ti	B	Al	Na	K	W	Hg	Sc	Tl	S	Ga	Se	Sample
	ppm	ppm	ppm	ppm	ppm	ppm	ppm	ppm	%	ppm	ppm	ppb	ppm	ppm	ppm	ppm	ppm	ppm	%	%	ppm	ppm	%	ppm	%	%	%	%	%	ppm	ppm	ppm	ppm	%	ppm	ppm	kg
G-1	4	20.6	3.1	50	<.1	23.4	8.0	548	1.97	<.5	3.0	9	4.4	66	<.1	<.1	1	36	54	.073	9	8	.59	219	136	1	1.01	.087	.52	<.2	<.01	2.0	.4	<.05	5	<.5	-
SK-1	9	98.7	2.7	56	<.1	98.4	26.3	503	3.72	2.1	8	1.4	1.5	133	.1	.4	1	92	1.65	125	10	65	2.17	19	383	2	3.09	.222	.03	3	.02	4.5	<.1	.45	9	<.5	3.4
SK-2	2.7	45.1	5.2	71	<.1	26.1	18.8	770	4.29	10.6	3	1.3	7	42	<.1	.4	<.1	113	2.24	165	12	31	1.88	46	233	2	3.15	.034	.05	3	.01	5.7	<.1	.31	12	<.5	1.0
SK-3	.3	105.0	1.9	3	<.1	12.2	2.0	88	.30	2.0	1.5	1.4	2.9	4	<.1	<.1	<.1	3	.09	.005	3	4	.04	19	.003	1	.25	.073	.12	1	<.01	1.1	<.1	<.05	1	<.5	1.8
SK-4	3.2	13.6	.8	15	<.1	5.6	2.5	187	.96	<.5	.2	1.2	.4	16	<.1	<.1	<.1	19	10	.014	3	7	.25	119	.013	2	.62	.082	.10	1	<.01	1.5	<.1	.14	3	<.5	2.0
SK-5	.5	27.7	1.3	26	<.1	10.0	2.6	340	1.72	1.6	.4	<.5	1.3	45	<.1	.1	.1	25	24	.048	3	4	.39	49	.060	1	1.00	.114	.19	2	.05	1.8	<.1	.38	5	.6	1.6
SK-6	.6	47.6	1.3	31	<.1	4.0	2.9	444	1.85	1.7	.5	1.1	1.3	54	<.1	.1	.1	32	29	.048	4	5	.45	63	.076	1	1.07	.148	.27	1	.04	1.9	1	.75	6	1.0	4.1
SK-7	.4	27.6	1.2	34	<.1	5.7	2.9	405	1.97	1.4	.3	<.5	1.3	55	<.1	.1	.1	28	29	.052	3	4	.47	54	.074	1	1.00	.119	.24	1	.05	1.7	1	.85	5	.9	2.0
SK-8	.6	29.9	1.8	32	<.1	2.9	2.2	368	1.81	1.8	.4	.7	1.3	46	<.1	.1	.1	25	23	.047	5	4	.43	52	.068	1	.88	.125	.19	1	.06	1.9	<.1	.55	6	<.5	3.5
SK-9	.3	57.0	.9	32	<.1	3.6	3.3	538	2.22	1.8	.6	3.6	1.5	62	<.1	<.1	.1	47	35	.065	5	5	.55	57	.090	1	1.16	.142	.30	1	.05	2.1	1	1.27	6	1.2	2.7
SK-10	.4	7.1	2.0	14	<.1	2.1	1.4	186	1.55	2.0	.5	1.3	1.1	43	<.1	.1	.2	24	12	.044	3	4	.33	35	.029	1	.75	.101	.11	1	.07	1.5	<.1	.29	4	<.5	3.5
SK-11	.4	12.5	1.6	87	<.1	2.2	8.4	750	3.88	1.3	.4	<.5	9	104	<.1	.1	.1	83	47	.097	4	2	1.29	68	.071	2	2.34	.124	.42	<.1	.16	6.5	1	.75	10	.5	3.4
SK-12	.3	80.2	.3	147	<.1	26.8	44.3	1681	8.07	.6	.1	.8	.1	167	<.1	<.1	1	270	1.38	.045	1	31	3.85	125	.078	1	3.34	.123	.09	<.1	.01	16.8	<.1	.42	12	<.5	4.2
SK-13	.2	4.9	2.1	9	<.1	2.5	2.1	249	1.05	1.9	.2	<.5	1.5	4	<.1	.1	<.1	13	.05	.008	4	3	.04	61	.003	2	.39	.040	.06	1	.01	2.2	<.1	<.05	2	<.5	2.6
SK-14	.8	4.6	1.5	13	<.1	1.7	2.3	316	1.80	.8	.5	<.5	.8	23	<.1	<.1	.4	11	.06	.022	4	5	.30	42	.010	1	.62	.067	.22	1	.03	1.0	1	1.56	3	<.5	3.4
SK-15	2.9	4.7	4.7	9	<.1	1.6	3.5	83	2.23	1.6	.3	2.3	.4	13	<.1	.1	<.1	4	.06	.014	1	4	.10	103	.015	1	.46	.062	.12	2	.01	.5	<.1	.25	2	.7	2.3
SK-16	3.0	13.0	1.5	19	<.1	1.6	1.9	256	1.63	8.8	.3	<.5	.8	63	<.1	.1	.1	22	18	.042	3	4	.37	42	.035	1	.83	.092	.14	1	.05	1.4	<.1	.57	4	.9	2.5
SK-17	.6	4.9	3.9	13	<.1	1.2	.5	147	1.39	2.2	.4	<.5	.7	76	<.1	.1	.2	16	.53	.035	3	2	.28	26	.025	1	1.26	.062	.13	1	.05	.9	<.1	1.0	6	.6	1.9
RE SK-17	.5	5.1	3.8	11	<.1	1.5	.6	149	1.41	2.2	.4	<.5	.7	78	<.1	.1	.2	16	.54	.035	4	2	.28	27	.027	1	1.31	.063	.14	2	.05	1.0	<.1	1.0	6	.7	-
SK-18	.5	4.2	3.6	10	<.1	.7	.5	124	1.26	3.5	.6	<.5	.8	326	<.1	.1	.1	18	3.65	.021	3	1	.24	22	.036	<.1	5.98	.021	.25	1	.15	1.3	<.1	.13	20	.9	2.8
SK-19	.4	13.8	1.4	105	<.1	2.2	9.9	893	3.94	2.5	.2	.5	.8	134	<.1	.2	<.1	95	.79	.099	4	2	1.30	82	.161	3	2.37	.182	.26	1	.13	7.0	1	1.75	10	.6	2.8
19582	.8	4.9	2.1	12	<.1	1.8	1.1	153	1.22	1.3	.2	<.5	.5	44	<.1	<.1	.1	13	10	.028	2	2	.28	38	.017	1	.64	.077	.10	2	.05	1.1	<.1	.22	3	<.5	1.3
19583	.7	3.9	2.3	11	<.1	1.5	2.5	138	1.47	.6	.3	.5	.5	56	<.1	<.1	.2	12	10	.028	2	4	.24	39	.020	1	.58	.089	.13	2	.05	.9	1	.77	3	.7	1.0
19584	16.9	1.4	95	<.1	1.4	9.5	825	3.91	2.2	.3	1.9	.8	122	<.1	.2	<.1	92	.78	.099	4	2	1.29	80	.161	2	2.25	.176	.23	1	.12	7.3	1	1.78	9	<.5	1.1	
19585	61.7	1.6	107	<.1	1.8	7.5	604	3.28	79.0	.1	.9	.5	112	.4	.2	.3	61	.95	.082	3	3	.91	57	.077	3	1.88	.223	.29	1	.01	3.8	1	2.30	7	<.5	1.5	
STANDARD DS7	20.8	107.6	70.2	414	.9	55.9	9.6	631	2.41	49.2	4.9	67.9	4.5	72	6.4	6.0	4.7	84	94	.079	13	162	1.06	378	127	40	.98	.075	.44	3.8	.20	2.5	4.2	.23	5	3.7	-

Boo technique
Boo technique

GROUP 10X - 15 GM SAMPLE LEACHED WITH 90 ML 2-2-2 HCL-HNO3-H2O AT 95 DEG. C FOR ONE HOUR, DILUTED TO 300 ML, ANALYSED BY ICP-MS.
(>) CONCENTRATION EXCEEDS UPPER LIMITS. SOME MINERALS MAY BE PARTIALLY ATTACKED. REFRACTORY AND GRAPHITIC SAMPLES CAN LIMIT AU SOLUBILITY.
- SAMPLE TYPE: Rock R150 Samples beginning 'RE' are Reruns and 'RRE' are Reject Reruns.

07-29-2006 A11:35

Data # FA _____ DATE RECEIVED: JUL 12 2006 DATE REPORT MAILED:.....

20 Boo Boo technique
Chains



All results are considered the confidential property of the client. Acme assumes the liabilities for actual cost of the analysis only.

**ACME ANALYTICAL LABORATORIES LTD.**

852 East Hastings., Vancouver, B.C., CANADA V6A 1R6
Phone: (604) 253-3158 Fax: (604) 253-1716
Our GST # 100035377 RT



ANGLO-CANADIAN URANIUM CORP.
1150 - 355 Burrard St.
Vancouver, BC
V6C 2G8

Inv.#: **A603551**
Date: Aug 5 2006

QTY	ASSAY	PRICE	AMOUNT
23	GROUP 1DX (15 gm) @	13.50	310.50
23	R150 - ROCK @	5.10	117.30
			<hr/>
			427.80
			25.67
			<hr/>
			453.47
			<hr/>
			CAD \$

COPIES 1

Please pay last amount shown. Return one copy of this invoice with payment.
TERMS: Net two weeks. 1.5 % per month charged on overdue accounts.

[COPY 1]

ACME ANALYTICAL LABORATORIES LTD.
(ISO 9001 Accredited Co.)

852 E. HASTINGS ST. VANCOUVER BC V6A 1R6

PHONE (604) 253-3158 FAX (604) 253-1716



GEOCHEMICAL ANALYSIS CERTIFICATE

Anglo-Canadian Uranium Corp. File # A604037

1150 - 355 Burrard St., Vancouver BC V6C 2G8 Submitted by: Len Harris



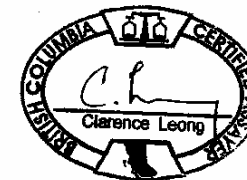
SAMPLE#	Mo	Cu	Pb	Zn	Ag	Ni	Co	Mn	Fe	As	U	Au	Th	Sr	Cd	Sb	Bi	V	Ca	P	La	Cr	Hg	Ba	Ti	B	Al	Na	K	W	Sample
	ppm	ppm	ppm	ppm	ppm	ppm	ppm	ppm	%	ppm	ppm	ppm	ppm	ppm	ppm	ppm	ppm	ppm	%	%	ppm	ppm	%	ppm	%	%	%	%	%	ppm	kg
G-1	<1	2	5	44	<3	4	4	547	1.93	<2	<8	<2	4	56	<5	<3	3	38	.51	.074	7	46	.61	234	.14	<3	.95	.07	.52	2	-
BCRC-12	<1	9	13	46	<3	5	4	208	2.11	<2	<8	<2	2	20	<5	<3	4	19	.50	.087	18	3	.37	131	.04	<3	.97	.05	.19	<2	2.89
BCRS-13	<1	11	8	62	<3	10	6	587	2.37	2	<8	2	<2	33	<5	<3	<3	17	1.21	.091	21	5	.40	108	<.01	3	1.10	.05	.23	<2	1.31
BCRS-15	1	14	8	65	<3	12	8	534	2.71	<2	<8	<2	<2	34	<5	<3	4	39	.73	.092	10	8	.80	51	.16	3	1.62	.05	.16	<2	2.32
BCRS-17	19	2	7	7	<3	2	<1	255	.79	4	<8	<2	<2	39	<5	<3	<3	7	3.40	.053	2	8	.04	18	.01	<3	.45	.02	.05	<2	1.55
BCRS-18	<1	20	6	60	<3	33	8	616	3.52	6	<8	<2	2	29	<5	<3	4	75	.70	.101	8	40	1.72	21	.32	<3	1.96	.20	.08	2	3.62
RE BCRS-18	1	19	6	60	<3	32	8	615	3.45	8	<8	<2	2	29	<5	7	10	74	.69	.102	8	40	1.74	21	.31	<3	1.95	.20	.08	<2	-
BCRS-19	100	5	9	23	.4	1	1	187	2.18	12	<8	<2	<2	13	<5	<3	5	16	.10	.093	7	5	.21	37	.01	<3	.46	.07	.09	<2	1.39
BCRS-21	17	42	<3	51	.7	25	7	473	3.87	93	<8	2	2	120	<5	3	9	75	2.04	.157	8	40	1.05	17	.20	<3	5.25	.80	.08	<2	2.93
BCRS-23	1	10	9	58	<3	1	3	733	2.45	5	<8	<2	2	22	<5	<3	10	38	.37	.095	15	2	.80	29	.09	<3	1.18	.06	.08	<2	2.19
BCRS-25	8	3	6	16	<3	2	<1	109	1.27	5	<8	<2	<2	24	<5	<3	<3	16	.16	.066	5	6	.17	33	.09	<3	.31	.04	.10	<2	2.52
502224N 1213405W	<1	56	9	46	<3	31	16	611	4.68	<2	<8	<2	4	24	<5	7	13	72	.31	.009	14	16	1.18	33	.08	4	2.51	.04	.10	<2	1.26
607951E 5582705N	1	8	6	33	<3	2	1	210	1.71	18	<8	<2	3	47	<5	<3	4	18	.14	.082	17	4	.21	108	<.01	<3	.62	.04	.28	<2	1.00
DD SHOWING	<1	22	8	113	<3	5	6	740	1.88	19	<8	<2	2	23	<5	4	4	36	2.19	.053	7	10	.55	14	.12	<3	.91	.02	.08	<2	2.90
DD SHOWING FLOAT	<1	10	<3	11	.7	4	2	300	.68	2	<8	<2	2	4	<5	<3	9	74	.08	.017	2	10	.23	21	<.01	<3	.39	<.01	.11	<2	1.81
JJ SHOWING	<1	36	7	58	<3	27	14	680	3.65	7	<8	<2	4	107	<5	6	9	110	1.35	.109	14	28	1.46	66	.35	4	2.30	.12	.10	<2	2.10
JJ SHOWING FLOAT	<1	39	7	48	<3	15	10	524	2.85	11	<8	<2	2	43	<5	5	<3	72	.60	.089	8	21	1.06	71	.28	<3	1.45	.08	.36	<2	1.42
STANDARD DS7	20	95	63	393	.8	48	8	594	2.27	48	<8	2	5	68	5.6	10	9	74	.89	.071	11	149	1.03	374	.12	34	.95	.07	.43	6	-

GROUP 1D - 0.50 GM SAMPLE LEACHED WITH 3 ML 2-2-2 HCL-HNO3-H2O AT 95 DEG. C FOR ONE HOUR, DILUTED TO 10 ML, ANALYSED BY ICP-ES.
(>) CONCENTRATION EXCEEDS UPPER LIMITS. SOME MINERALS MAY BE PARTIALLY ATTACKED. REFRACTORY AND GRAPHITIC SAMPLES CAN LIMIT AU SOLUBILITY.
ASSAY RECOMMENDED FOR ROCK AND CORE SAMPLES IF CU PB ZN AS > 1%, AG > 30 PPM & AU > 1000 PPB
- SAMPLE TYPE: ROCK R150 Samples beginning 'RE' are Retuns and 'RRE' are Reject Retuns.

08-07-2006 P12:11

Data FA

DATE RECEIVED: JUL 21 2006 DATE REPORT MAILED:.....



ACME ANALYTICAL LABORATORIES LTD.
(ISO 9001 Accredited Co.)

852 E. HASTINGS ST. VANCOUVER BC V6A 1R6

PHONE (604) 253-3158 FAX (604) 253-1110



GEOCHEMICAL ANALYSIS CERTIFICATE



Anglo-Canadian Uranium Corp.
1150 - 355 Burrard St., Vancouver BC V6C 2G8

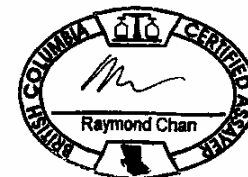
File # A604037
Submitted by: Len Harris

SAMPLE#	Au* ppb
G-1	.8
BCRC-12	.9
BCRS-13	<.5
BCRS-15	1.1
BCRS-17	1.9
BCRS-18	4.8
RE BCRS-18	4.2
BCRS-19	4.4
BCRS-21	23.4
BCRS-23	1.8
BCRS-25	1.4
502224N 1213405W	1.5
607951E 5582705N	4.6
DD SHOWING	299.8
DD SHOWING FLOAT	810.8
JJ SHOWING	3.8
JJ SHOWING FLOAT	746.4
STANDARD AU-R	482.4

AU* GROUP 3A - IGNITED, ACID LEACHED, ANALYZED BY ICP-MS. (15 gm)
- SAMPLE TYPE: ROCK R150
Samples beginning 'RE' are Reruns and 'RRE' are Reject Reruns.

Data ^t FA _____

DATE RECEIVED: JUL 21 2006 DATE REPORT MAILED: 2006-08-17 A 1:00



All results are considered the confidential property of the client. Acme assumes the liabilities for actual cost of the analysis only.

**ACME ANALYTICAL LABORATORIES LTD.**852 East Hastings, Vancouver, B.C., CANADA V6A 1R6
Phone: (604) 253-3158 Fax: (604) 253-1716
Our GST # 100035377 RT**ANGLO-CANADIAN URANIUM CORP.**1150 - 355 Burrard St.
Vancouver, BC
V6C 2G8Inv.#: **A604037**

Date: Aug 25 2006

QTY	ASSAY	PRICE	AMOUNT
15	GEO1 @	12.96	194.40
15	R150 - ROCK @	5.10	76.50
	RXCR - 16.21 kg @ \$0.95/kg		270.90
	RXS - 16.21 kg @ \$0.40/kg		15.40
			6.48
			292.78
			17.57
			310.35

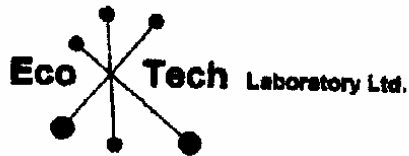
GST Taxable
6.00% GST
CAD \$

Samples submitted by Len Harris

COPIES 1

Please pay last amount shown. Return one copy of this invoice with payment.
TERMS: Net two weeks. 1.5 % per month charged on overdue accounts.

[COPY 1]



ASSAYING
GEOCHEMISTRY
ANALYTICAL CHEMISTRY
ENVIRONMENTAL TESTING

10041 Dallas Drive, Kamloops, BC V2C 8T4
Phone (250) 873-8700 Fax (250) 873-4567
E-mail: info@ecotechlab.com
www.ecotechlab.com

CERTIFICATE OF ASSAY AK 2006-381

Anglo Canadian Uranium
2589 Thompson drive
Kamloops, BC
V2C 4L5

22-May-06

Attention: Frank LaRoche

No. of samples received: 4
Sample Type: Rock
Submitted by: Frank LaRoche

ET #.	Tag #	Au (g/t)	Au (oz/t)	Pt (g/t)	Pt (oz/t)	Pd (g/t)	Pd (oz/t)
1	SA-1	<0.03	<0.001				
2	SA-2	<0.03	<0.001				
3	SA-3	<0.03	<0.001				
4	SA-4	<0.03	<0.001	<0.03	<0.001	<0.03	<0.001

QC DATA:

Reps/1:

1 SA-1 <0.03 <0.001

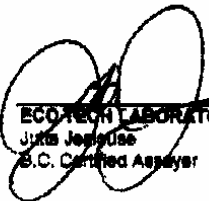
Repeat:

1 SA-1 <0.03 <0.001

Standard:

PG113 0.48 0.014 1.44 0.042 0.40 0.012

JJ/qa
XLS/05


ECO TECH LABORATORY LTD.
Jimmie Jeanes
B.C. Certified Assayer

05/23/2006 15:41 #044 P.003/003

2505794567

From: EGO TECH LAB

JLg
 gms
 XL808

EGO TECH LABORATORY LTD.
 10041 Dallas Drive
 KAMLOOPS, B.C.
 V2C 6T4

ICP CERTIFICATE OF ANALYSIS AK 2004-381

Anglo Canadian Uranium
 2589 Thompson drive
 Kamloops, BC
 V2C 4L5

Attention: Frank LaRoche

Phone: 250-573-5700
 Fax : 250-573-4567

No. of samples received: 4
 Sample Type: Rock
 Submitted by: Frank LaRoche

Values in ppm unless otherwise reported

El. #	Tag #	Ag	Al %	As	Ba	Bi	Ca %	Cd	Co	Cr	Cu	Pb %	La	Mg %	Mn	Mo	Na %	Ni	P	Pb	Sb	Se	Sr	Ti %	U	V	W	Y	Zn
1	SA-1	<0.2	0.36	36	130	<5	>10	<1	18	99	100	0.25	<10	1.03	2068	2	0.04	14	220	4	<5	<20	351	0.02	<10	104	<10	14	86
2	SA-2	<0.2	0.41	<5	130	5	>10	<1	28	84	29	0.67	<10	0.19	1272	5	0.02	14	300	<2	<5	<20	140	<0.01	<10	400	<10	3	52
3	SA-3	<0.2	0.62	16	40	<5	0.98	<1	11	6	90	1.40	<10	0.43	303	<1	0.05	3	140	10	<5	<20	40	0.08	<10	19	<10	2	44
4	SA-4	<0.2	5.00	16	80	<5	5.12	<1	26	40	332	0.41	<10	0.58	229	<1	0.38	7	180	30	<5	<20	200	0.09	<10	200	<10	<1	27

QC DATA:

Repack:

1	SA-1	<0.2	0.44	40	138	<5	>10	<1	18	90	95	5.91	<10	0.99	1934	2	0.04	13	280	8	<5	<20	351	0.03	<10	91	<10	13	86
---	------	------	------	----	-----	----	-----	----	----	----	----	------	-----	------	------	---	------	----	-----	---	----	-----	-----	------	-----	----	-----	----	----

Standard:

GED08		1.4	1.57	85	145	<5	1.72	<1	18	82	86	4.64	<10	0.74	738	<1	0.03	20	620	24	<5	<20	58	0.11	<10	70	<10	10	72
-------	--	-----	------	----	-----	----	------	----	----	----	----	------	-----	------	-----	----	------	----	-----	----	----	-----	----	------	-----	----	-----	----	----

Julia Jeppesen
 EGO TECH LABORATORY LTD.
 Julia Jeppesen
 B.C. Certified Assayer

