

***Prospecting, Technical
&
Geochemical Assessment
Report***

RECEIVED
OCT 13 2005
Gold Commissioner's Office
VANCOUVER, B.C.

**The
Le Baron Fractions**

Tenures
517542
517543
518578

**Victoria Mining
Division**

NTS:
092C069
092C058

**Report By
Scott Phillips
Le Baron Prospecting**

2005
GEOLOGICAL SURVEY BRANCH
VANCOUVER, B.C.

Index

Cover Pagepg 1

Indexpg 2

Area Overview, location, area geology, historic information.....pg 3

Recent information, specifications, and sampling technical informationpg 4

Assessment expenses, total work chartpg 5

Maps:

Over Viewappendix 1

MTO:

Le Baron #10

517542 overview, working, 1-5,000appendix 2

MTO:

Le Baron #12

517543 overview, working, 1-5,000appendix 3

MTO:

Le Baron 53

518578 overview, working, 1-5,000appendix 4

Aeromagnetic Map // Tre Guis Minerals appendix 5

ALS Chemex

Certificates of analysisSection A, B, C

E- Mail Confirmation of Eventappendix 6

Area Overview:

The Le Baron Fractions are located just north of the town of Port Renfrew BC, a small community, which is located on the west coast of Vancouver Island, approximately 100 km west of the capital city of Victoria BC. The Fraction tenures are located in a huge block of mineral tenures owned by Emerald Field Resources Corporation, from Kenora, Ontario. This giant block of mineral tenures is known as the Pearson PGE Project within the mining exploration community. Many reports have been submitted for this area.

Tenure Location and Access:

Access to two of the fraction tenures is by a series of overgrown logging roads which are un drivable at the present time, but active logging in the area by Timber West will soon re open these roads some time in the next year.

1. Access to the first two fractions [517542, 517543] is up the newly opened logging road called the Braden Mainline. Turning right onto the Reid Creek Mainline, which is drivable a short distance approximately 1.5 kms the road becomes too over grown. A short easy walk of less the 1 km takes you to the first fraction tenure [517542] which is located on the Reid Creek Mainline.
2. The second fraction is a walk of 1.75 km farther up the overgrown Reid Creek Mainline to the end of this road. A short walk to the head waters of the Reid Creek, then a steep climb to the plateau between the Browns Creek Mtn, and the Fairy Lake Mountain. The working map shows the two peaks and a small plateau. [MTO: 517543]. A geological intrusion known as the West Coast Complex dissects this fraction tenure.
3. The third fraction is a sand pit, located just past the local marina, along the Gordon River Mainline. This sand pit is the only sand pit in the whole entire San Juan Valley of fine non screened sand. The Seymour Range, is part of this tenure, ancient glacial flows, and sediment run off have deposited a large body of sand in the area, a sediment sample was tested and assayed and the results were conducted by ALS Chemex of Vancouver. Rock chip samples were taken above the sand pit, on top of the geological formation of the Seymour Range were taken, but were not sent for assaying at this time.

Area Geology:

These tenures lie within Wrangell, along the Seymour Range, each tenure is strategically located also within the "Pearson Project" as to be in line with the huge intrusion of the West Coast Crystalline Intrusion, West Coast Complex, gabbros, diorites, peridotites, along with ultramafic intrusions, of the Paleozoic-Mesozoic, There is also limestone of the Quatsino Formation, Triassic era. Volcanic rock of the Lower Jurassic Bonanza Group is also present in the area.

Historic information:

Many reports can be found on the Minfile for the Port Renfrew area. Work can be traced back to the turn of the century by the first settlers, to reference material online, such as reports, 03675 (catty, Ed, Val, sue), 04359 (catty, Val), Daniel / Conqueror, Bugaboo, to name a few.

Recent Area Exploration:

Recent Aeromagnetic surveying and diamond drilling by Emerald Field Resources suggest a high anomaly which extends from the historic Bugaboo Creek area east to the historic Reko Tenures. The fraction tenure [518578] is part of the famous Seymour Range, and the plateau is a rare area volcanic anomaly, to be assayed in the future. There is a lot of historic reports which can be found on the minfile re guarding the Port Renfrew area, such reports as the Reko, Ebb, Bugaboo, and recently, the newly released report by Emerald Fields Resources on the Pearson Project, [# 28059] which speaks of last years [2005] drilling project and the discovery of a high grade ore body of great size and width and thickness which extends from the Bugaboo, west to the Granite Creek area, running directly through the two fractions and the mineral tenures surrounding the area.

The Pearson Project is also known to possibly contain vast amounts of recently discovered high grade Ni-Cu-PGE'S which are just being prospected and sampled for which underlain this area for millions of years.

These fraction tenures are a small, but important part of the huge Pearson Project, which has potential to become a huge future economic potential for British Columbia.

Specifications and Technical Information:

Sampling Methods;

All sample points are marked on working maps, and all assays points were plotted on field maps using GPS. All rock chip samples were weighed, bagged and tagged for geochemical assaying, sent to ALS Chemex laboratory in Vancouver.

1. Rock Chip samples were obtained in field by using a hammer / chisel to break away small sample chips from host rock. All Field sample points are marked on working maps using the "XX" symbol.
2. Soil sediment samples are marked on working maps as "ZZ" symbol, using a stainless steel mesh screen and a gold pan to classify and hand pan the sample.
3. Surveyor's hip chain line was run along some roads, and all basic trails. Some trail clearing was done using machete. All surveyed lines are marked as "-----"on working maps.
4. Basic field testing of samples was conducted using hydrochloric acid for testing serpentine, limestone, and magnesite. Heavy metal sampling was conducted also in field using a magnet to test for the heavy metals and magnetic conductivity. Field loops were used and a roadside field microscope was also used for close observation of samples, and a more powerful 1-40,000 was used at home base. Numbered bags and tags were used to catalogue field samples for later reference.
5. GPS Co-ordinates were taken using a Lorraine, Global map 100 GPS, All Co-ordinates are plotted on working maps but reference to specific work sites such as geochemical assessments are plotted and marked on working maps.
6. Geochemical Assaying was conducted using ALS Chemex in Vancouver, Assaying methods were conducted as per the tenure owner, and types of methods conducted are referred to in each assay. Reference to the sample points are marked on working maps in report. Assay results are included.

Assessment Expenses:

July 1, 2, 3, 2006

Prospectors

Scott Phillips: FMC # 145817

3 days @ \$30.00 / hr x 24 hrs= \$720.00

Bob Morris: FMC #118959

3 days @ \$20.00 / hr x 19 hrs = \$380.00

Truck 4x4 = \$50.00 / day x 3= \$150.00

Accommodations:

#24 Tsonaquay Dr. Port Renfrew BC

\$70.00 / day x 2 days = \$ 210.00

ALS Chemex

Vancouver BC

Geochemical Assays

Received on July 12, 2006 [costs confirmed]

Processed August 22, 2006 [huge back log]

6 rock chip, 1 soil sediment= \$247.50 [not included]

Report Data Compilation

Le Baron Prospecting [1 day]

Office Supplies, postal fees, etc,= \$350.00 [not included]

Total Exploration program on the Fraction Tenures \$1460.00

Work conducted: to get a basic idea of this area, by geochemical analysis and traversing the tenures taking rock chip samples and GPS co-ordinates.

- Trail slashing, [basic, 500 meters]
- Surveyor line, 1500 meters, road and access trails.
- 30 Rock Chip samples taken throughout tenures.
- 6 rock chip submitted to ALS Chemex
- Soil Sediment [sand pit], 4 samples taken 1 submitted for assaying.

ALS sample number, rock type, NTS co-ordinates.

Le Baron #10, Sample points; SECTION A

ALS: B-314581 = diorite, NTS: 5389595 x 399605

ALS: B-314582 = chalcopryite, NTS: 5389605 x 399875

ALS: B-314583 = gabbros, NTS: 5389640 x 400150

Le Baron #12, Sample points; rock type. SECTION B

ALS: B-314584 = serpentine, NTS: 5389395 x 401150

ALS: B-314585 = serpentine alteration, NTS: 5388850 x 401110

ALS: B-314586 = diorite, NTS: 5388450 x 401150

Le Baron #53, Sample point; soil type SECTION C

ALS: B-314587 = soil sediment, NTS: 5383330 x 395260

Summary.

These fraction tenures were sampled for basic rock geology, geochemistry, to get a better understanding of why this intrusion is being prospected by Emerald Field Resources. From the assay results it is clear that there is an underlain of a vast mineral resource. Over the course of three days, we collected basic rock chip samples using a chisel and hammer on surface exposures, surveyed the tenures, used surveyors line and basic trail slashing for access. Excellent rock out cropping is present within the fractions and the assay results show it.

Author Disclaimer:

I, Scott Phillips have been an active prospector in the Port Renfrew area for many years, I hold several large mineral tenures within the Pearson Project, I have submitted many prospecting reports to the Minister, and I am also very knowledgeable, when it comes to the area geology in Port Renfrew. I'm studying area plate tectonics [Yorath], and historic minfile reports of the area. I consent to the use of this information in this report to further enhance the Pearson Project., and the Le Baron Tenures within it.

Scott Phillips,  , Date July 11, 2006

Acknowledgments:

ALS Chemex
Vancouver BC

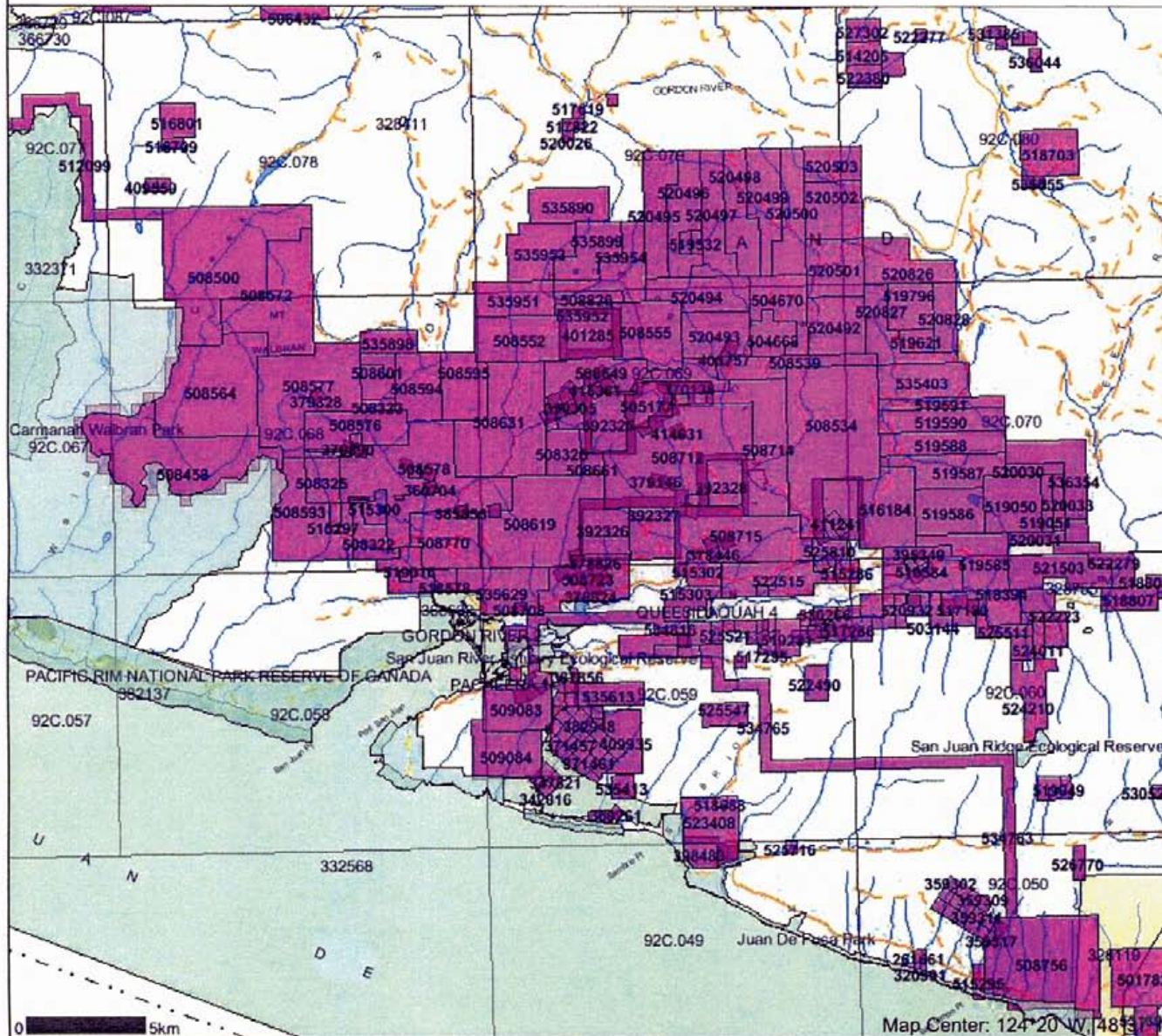
MTO
Mineral Titles Online
Maps and Related info.

Minfile.
Historical information,

TreGuis
Copy of Aeromagnetic Maps

OVERVIEW MAP: PEARSON PROJECT: PORT HENRY

Map created Tue Jul 11 09:25:52 PDT 2006



Legend

- Indian Reserves
- National Parks
- Parks
- Mineral Tenures Reserves (Sites)
- Placer Claim Designation
- Placer Lease Designation
- No Staking Reserve
- Conditional Reserve
- Release Required Reserve
- Surface Restriction
- Recreation Area
- Others
- Mining Divisions
- BCGS Grid
- Annotation (1:250K)
- Transportation - Points (1:250K)
- Airfield
- Anchorage - Seaplane
- Ferry Route
- Helipoint
- Seaplane Base
- Air Field
- Airport
- Air Feature - Condition Unknown
- Airport, Abandoned
- Transportation - Lines (1:250K)
- Ferry Route
- Aerial Caisway
- Road (Gravel Undivided) - 1 Lane
- Road (Gravel Undivided) - 3 Lanes
- Road - Paved, Janes, 2 or More, Divided
- Road (Paved Undivided) - Not Elevated - 1 Lane
- Road (Paved Undivided) - Not Elevated - 2 Lanes
- Road - Paved, Janes, 3 or More, Undivided
- Road (Unimproved)
- Road - Loose, access Dry Weather
- Road (Winter Road)
- Road - Paved, Janes, 2, Undivided
- Road - Paved, Janes, 2, Undivided, U/C
- Road - Paved, Divided, access, Non Standard
- Track - Cart/Tractor
- Causeway (Railway)
- Cut (Roadway)
- Trail
- Tunnel
- Bridge
- Rail Line - Narrow Gauge - Single Track
- Rail Line (Multiple Track)
- Rail Line (Single Track)
- Rail Line - Abandoned Track
- Cable - Telephone

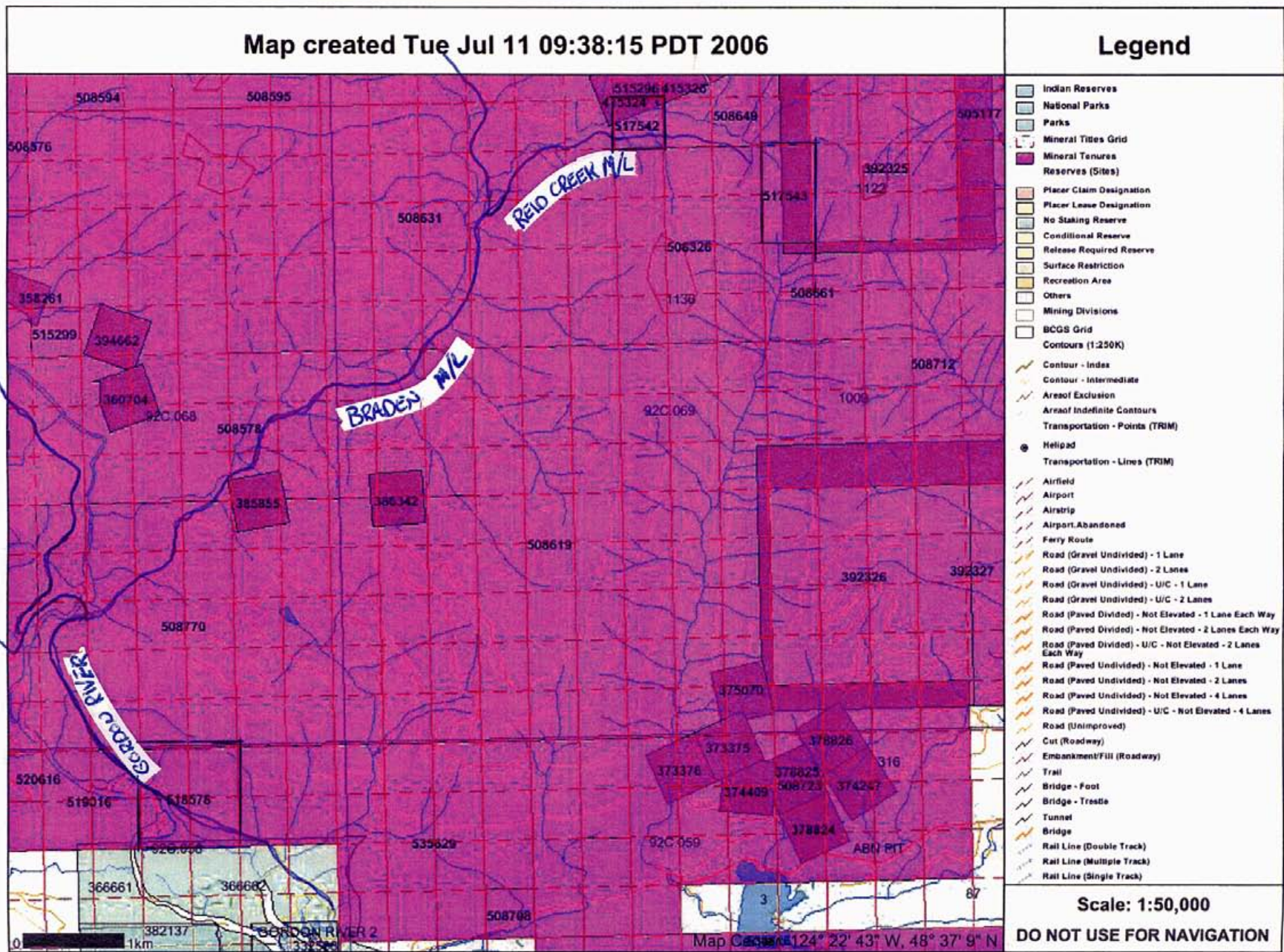
Scale: 1:250,000

DO NOT USE FOR NAVIGATION

Appendix 1

#53 = 518576
 #12 = 517543
 MTO: LE BARON #10 = 517542 ROADS

Appendix 1



MTO: LEBARON #10: 517542
 #12: 517543 OVERVIEW

Appendix Z

Map created Tue Jul 11 09:30:16 PDT 2006

Legend



- Indian Reserves
- National Parks
- Parks
- Mineral Titles Grid
- Mineral Tenures
- Reserves (Sites)
- Placer Claim Designation
- Placer Lease Designation
- No Staking Reserve
- Conditional Reserve
- Release Required Reserve
- Surface Restriction
- Recreation Area
- Others
- Mining Divisions
- Integrated Cadastral Fabric
- BCGS Grid
- Annotation (1:20K)
- Transportation - Points (TRIM)
- Helipad
- Transportation - Lines (TRIM)
- Airfield
- Airport
- Airstrip
- Airport, Abandoned
- Ferry Route
- Road (Gravel Undivided) - 1 Lane
- Road (Gravel Undivided) - 2 Lanes
- Road (Gravel Undivided) - U/C - 1 Lane
- Road (Gravel Undivided) - U/C - 2 Lanes
- Road (Paved Divided) - Not Elevated - 1 Lane Each Way
- Road (Paved Divided) - Not Elevated - 2 Lanes Each Way
- Road (Paved Divided) - U/C - Not Elevated - 2 Lanes Each Way
- Road (Paved Undivided) - Not Elevated - 1 Lane
- Road (Paved Undivided) - Not Elevated - 2 Lanes
- Road (Paved Undivided) - Not Elevated - 4 Lanes
- Road (Paved Undivided) - U/C - Not Elevated - 4 Lanes
- Road (Unimproved)
- Cut (Roadway)
- Embankment/Fill (Roadway)
- Trail
- Bridge - Foot
- Bridge - Trestle
- Tunnel
- Bridge
- Rail Line (Double Track)
- Rail Line (Multiple Track)
- Rail Line (Single Track)
- Rail Line - Abandoned Track
- Spur
- Transportation - Airfield (EBM)

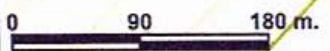
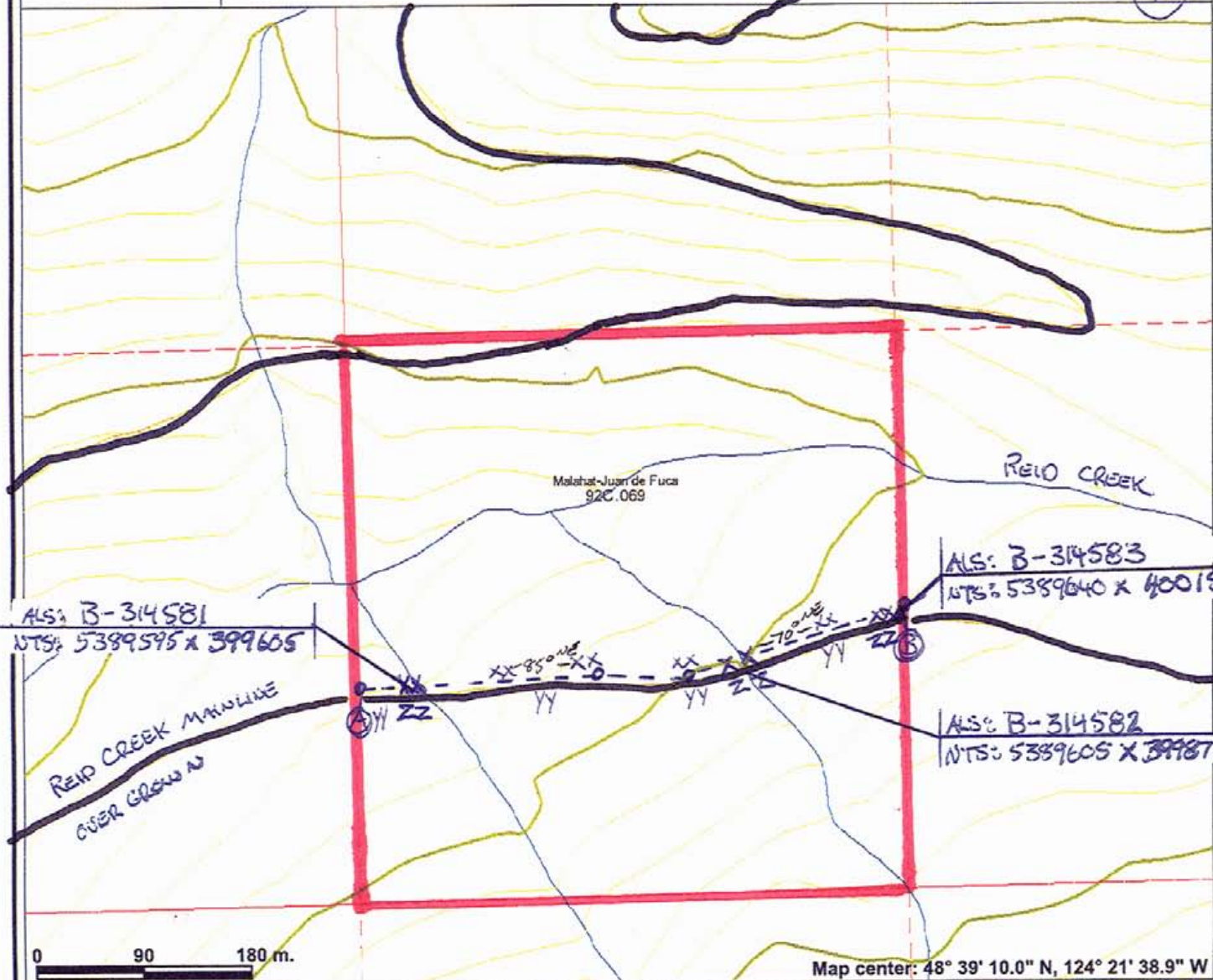
Scale: 1:20,000

DO NOT USE FOR NAVIGATION

Le Baron #10 / #517542 / working map



- ### Legend
- Indian Reserves
 - National Parks
 - Parks
 - Mineral Titles Grid (LRDW)
 - Reserves (Mineral - LRDW Sites)
 - Placer Claim Designation
 - Placer Lease Designation
 - No Staking Reserve
 - Conditional Reserve
 - Release Required Reserve
 - Surface Restriction
 - Recreation Area
 - Others
 - Integrated Cadastral Fabric
 - BCGS Grid
 - Contours (TRIM)
 - Contour - Index
 - Contour - Index, Indefinite
 - Contour - Index, Depression
 - Contour - Index, Depression, Indefinite
 - Contour - Intermediate
 - Contour - Intermediate, Indefinite
 - Contour - Intermediate, Depression
 - Contour - Intermediate, Depression, Indefinite
 - Area of Exclusion
 - Area of Indefinite Contours
 - Annotation (1:20K)
 - Transportation - Points (TRIM)
 - Helipad
 - Transportation - Lines (TRIM)
 - Airfield
 - Airport
 - Annotation
- Scale: 1:5,000



Map center: 48° 39' 10.0" N, 124° 21' 38.9" W

This map is a user generated static output from an Internet mapping site and is for general reference only. Data layers that appear on this map may or may not be accurate, current, or otherwise reliable. THIS MAP IS NOT TO BE USED FOR NAVIGATION.

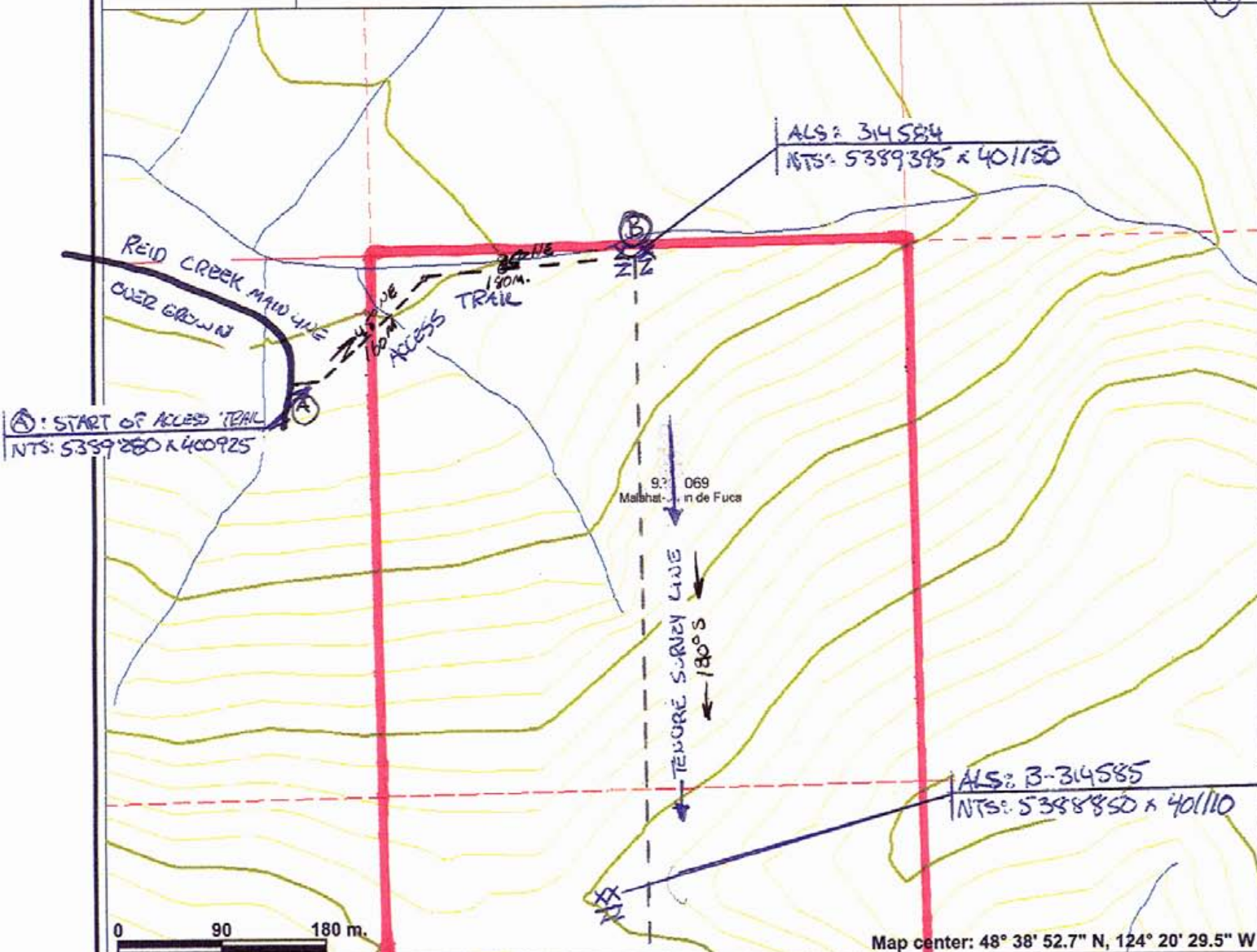
Notes: XX = rock chip sample points
ZZ = ALS Chemex sample points

--- ROAD SURVEY LINE.
YY TRAIL SLASH

Ⓐ = NTS: 5389595 x 399550
Ⓑ = NTS: 5389640 x 400015

TEMPURE BOUNDARY

Le Baron #12 / #517543 / working map



Legend

- Indian Reserves
- National Parks
- Parks
- Mineral Titles Grid (LRDW)
- Reserves (Mineral - LRDW Sites)
- Placer Claim Designation
- Placer Lease Designation
- No Staking Reserve
- Conditional Reserve
- Release Required Reserve
- Surface Restriction
- Recreation Area
- Others
- Integrated Cadastral Fabric
- BCGS Grid
- Contours (TRIM)
- Contour - Index
- Contour - Index.Indefinite
- Contour - Index.Depression
- Contour - Index.Depression Indefinite
- Contour - Intermediate
- Contour - Intermediate.Indefinite
- Contour - Intermediate.Depression
- Contour - Intermediate.Depression Indefinite
- Area of Exclusion
- Area of Indefinite Contours
- Annotation (1:20K)
- Transportation - Points (TRIM)
- Transportation - Lines (TRIM)
- Helipad
- Airfield
- Airport
- Alerten

Scale: 1:5,000

This map is a user generated static output from an Internet mapping site and is for general reference only. Data layers that appear on this map may or may not be accurate, current, or otherwise reliable. THIS MAP IS NOT TO BE USED FOR NAVIGATION.

Notes: XX = rock chip sample points
 ZZ = ALS Chemex sample point
 — GPS survey line

Map center: 48° 38' 52.7" N, 124° 20' 29.5" W

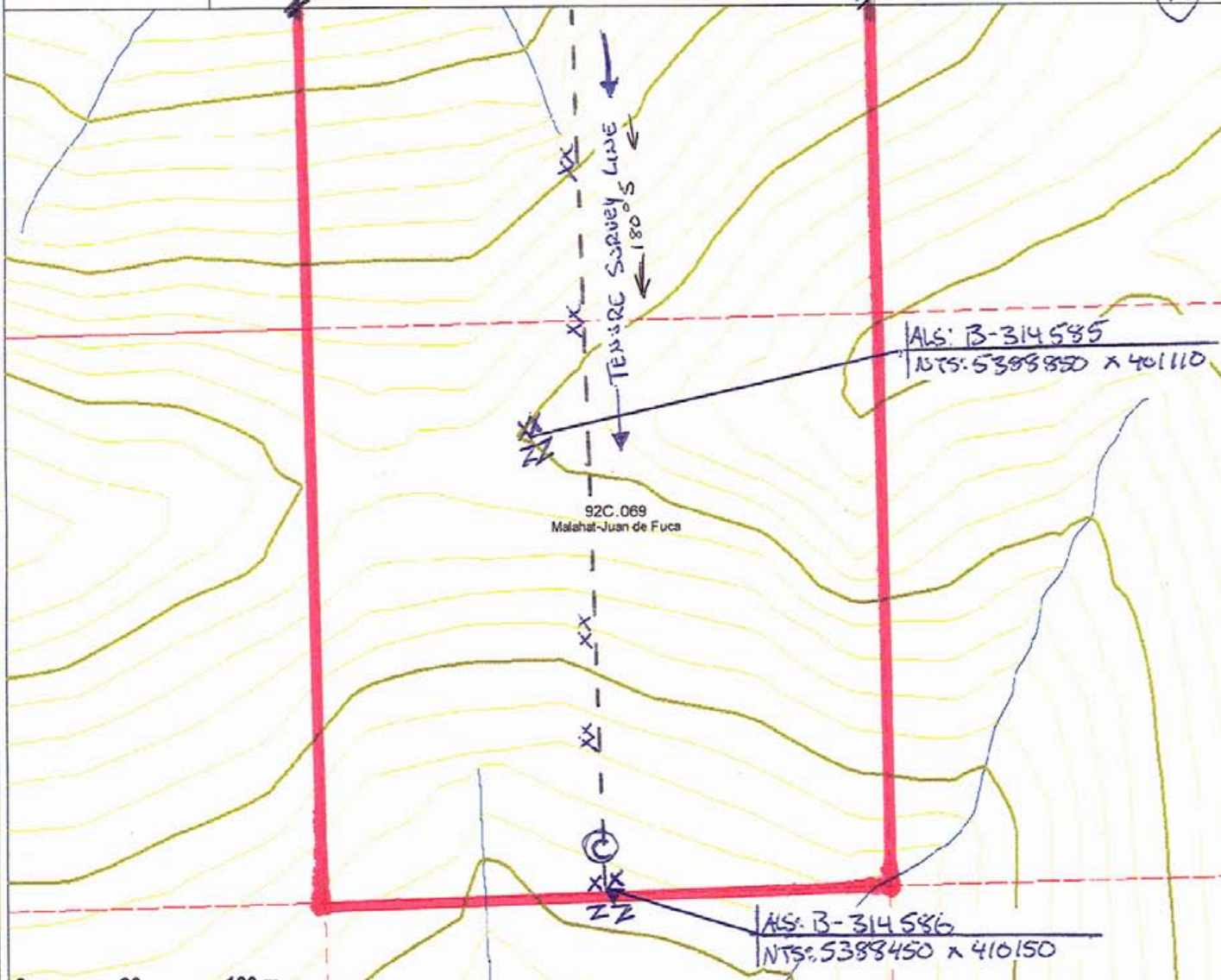
Le Baron #12 / #517543 / working map



Legend

- Indian Reserves
- National Parks
- Parks
- Mineral Titles Grid (LRDW)
- Reserves (Mineral - LRDW Sites)
- Placer Claim Designation
- Placer Lease Designation
- No Staking Reserve
- Conditional Reserve
- Release Required Reserve
- Surface Restriction
- Recreation Area
- Others
- Integrated Cadastral Fabric
- BCGS Grid
- Contours (TRIM)
- Contour - Index
- Contour - Index.Indefinite
- Contour - Index.Depression
- Contour - Index.Depression Indefinite
- Contour - Intermediate
- Contour - Intermediate.Indefinite
- Contour - Intermediate.Depression
- Contour - Intermediate.Depression Indefinite
- Area of Exclusion
- Area of Indefinite Contours
- Annotation (1:20K)
- Transportation - Points (TRIM)
- Helipad
- Transportation - Lines (TRIM)
- Airfield
- Airport
- Attraction

Scale: 1:5,000



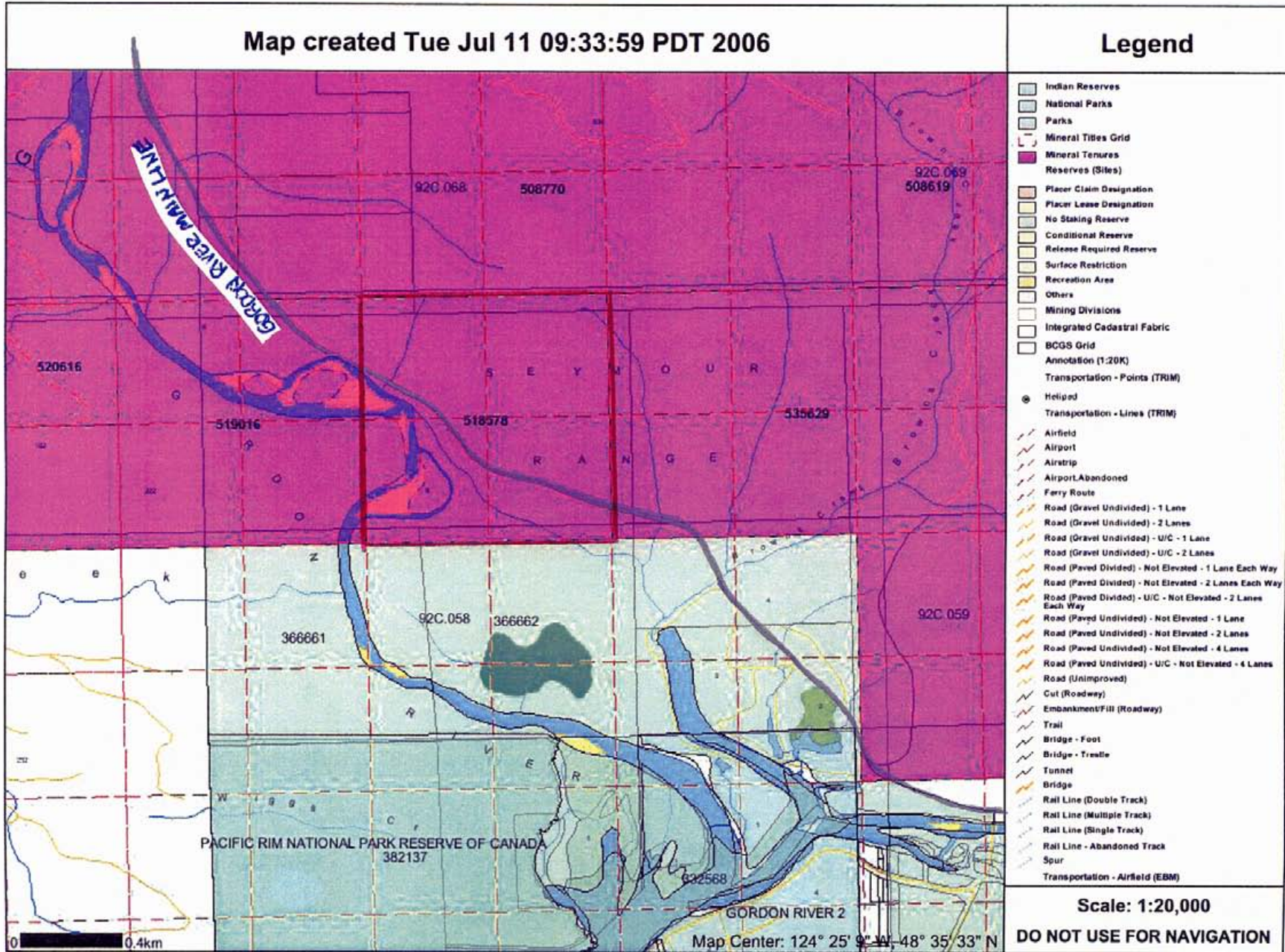
This map is a user generated static output from an Internet mapping site and is for general reference only. Data layers that appear on this map may or may not be accurate, current, or otherwise reliable. THIS MAP IS NOT TO BE USED FOR NAVIGATION.

Notes: XX = rock chip sample points
 ZZ = ALS Chemex sample points
 — GPS survey line

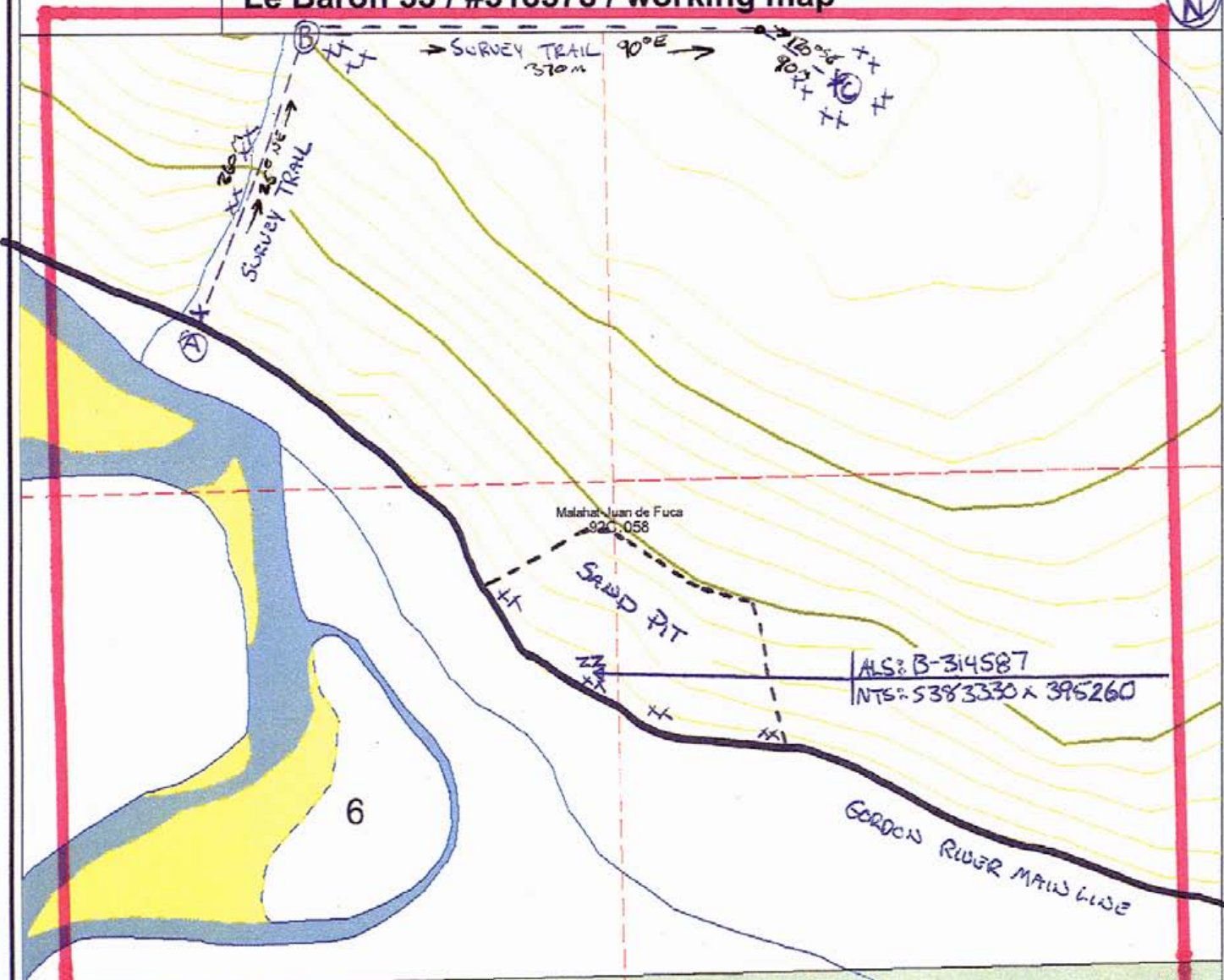
Map center: 48° 38' 39.3" N, 124° 20' 30.2" W

MTD: TENURE # 518578 LE BARON 53 OVERVIEW

Appendix 4



Le Baron 53 / #518578 / working map



- ### Legend
- Indian Reserves
 - National Parks
 - Parks
 - Mineral Titles Grid (LRDW)
 - Reserves (Mineral - LRDW Sites)
 - Placer Claim Designation
 - Placer Lease Designation
 - No Staking Reserve
 - Conditional Reserve
 - Release Required Reserve
 - Surface Restriction
 - Recreation Area
 - Others
 - Integrated Cadastral Fabric
 - BCGS Grid
 - Contours (TRIM)
 - Contour - Index
 - Contour - Index.Indefinite
 - Contour - Index.Depression
 - Contour - Index.Depression Indefinite
 - Contour - Intermediate
 - Contour - Intermediate.Indefinite
 - Contour - Intermediate.Depression
 - Contour - Intermediate.Depression Indefinite
 - Area of Exclusion
 - Area of Indefinite Contours
 - Annotation (1:20K)
 - Transportation - Points (TRIM)
 - Helipad
 - Transportation - Lines (TRIM)
 - Airfield
 - Airport

0 90 180 m.

366662

Map center: 48° 35' 43.1" N, 124° 25' 12.1" W

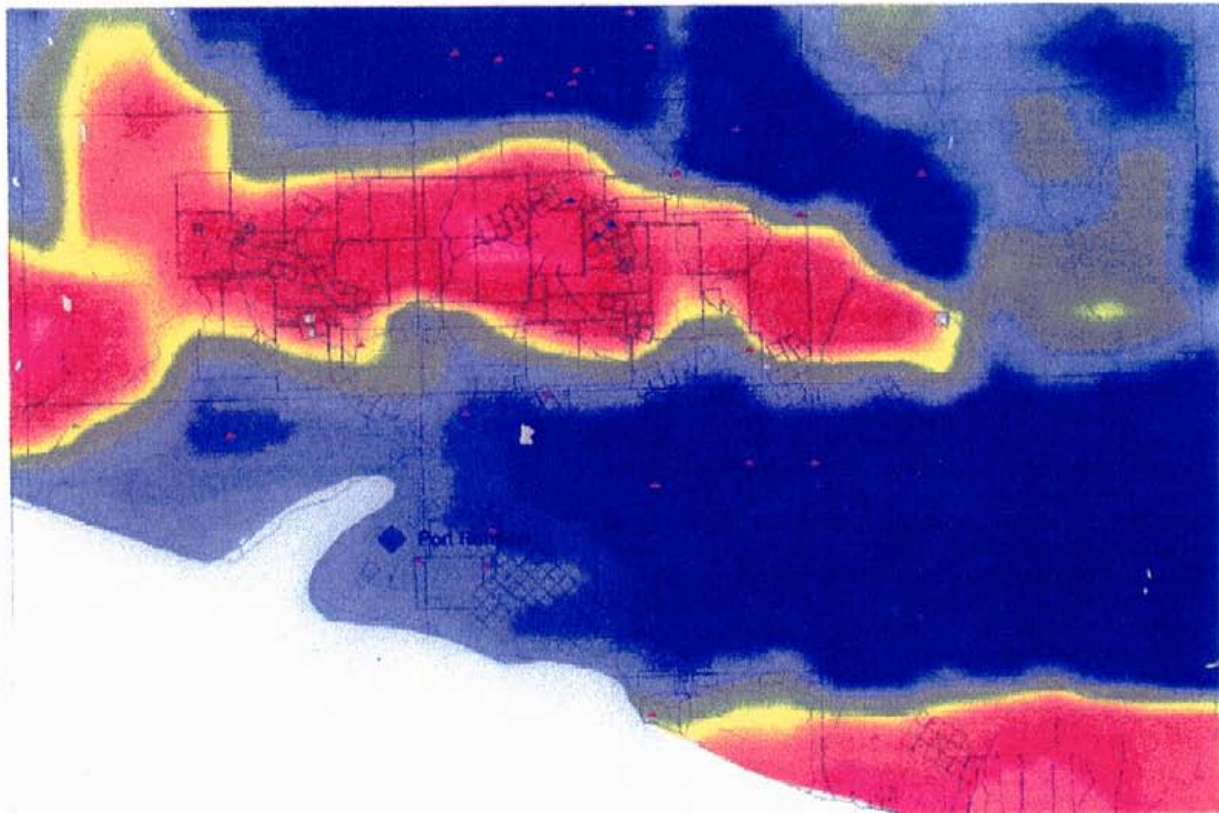
Scale: 1:5,000

This map is a user generated static output from an Internet mapping site and is for general reference only. Data layers that appear on this map may or may not be accurate, current, or otherwise reliable. THIS MAP IS NOT TO BE USED FOR NAVIGATION.

Notes: XX = rock chip sample points
 ZZ = ALS Chemex sample points
 — GPS survey line

Ⓐ = NTS: 5383625 x 394940
 Ⓑ = NTS: 5383865 x 395850
 Ⓒ = NTS: 5383900 x 395500

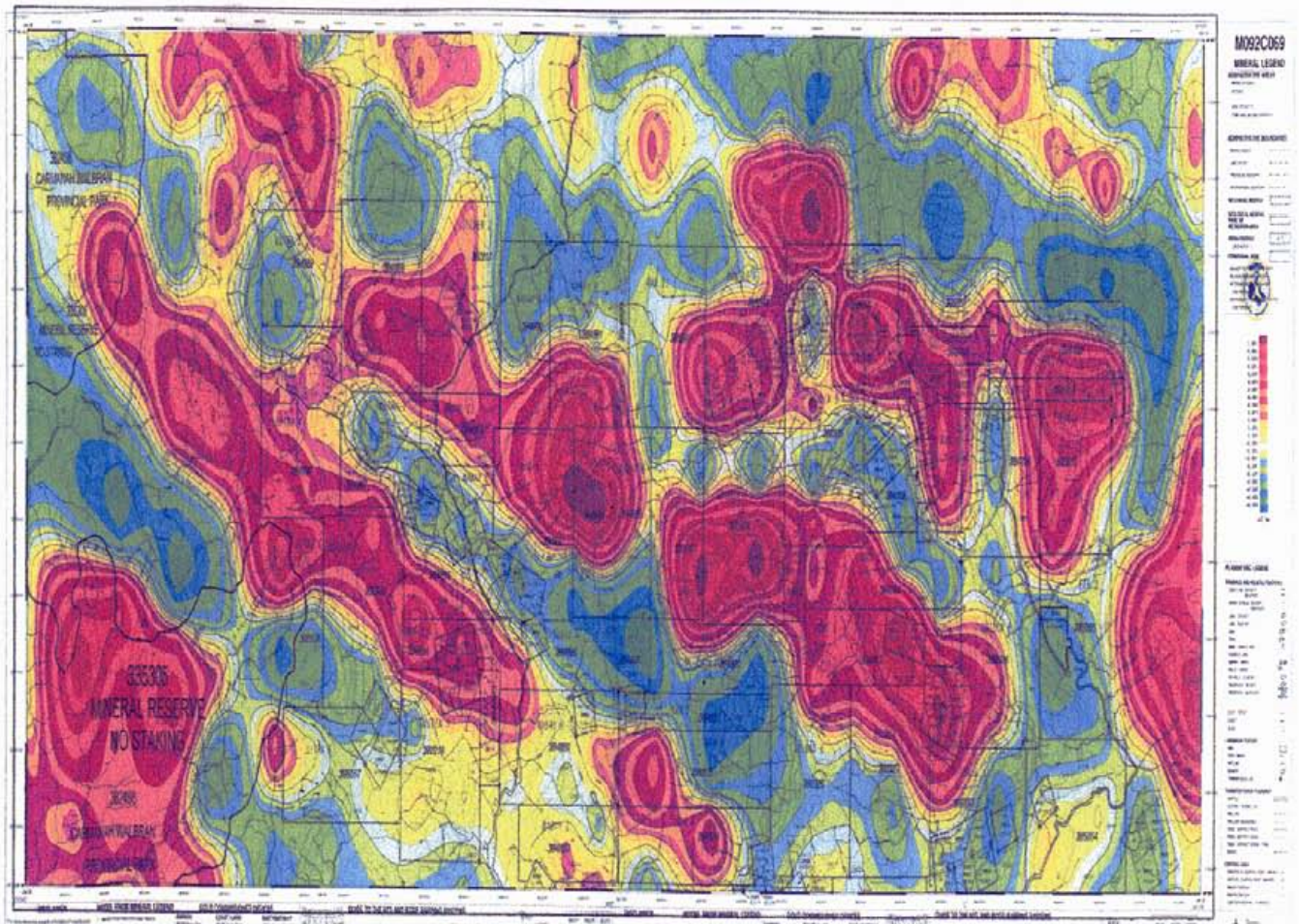
Tre Guis Minerals - Aeromag



SCALE 1 : 250,000



Appendix 5



A copy of an Aeromagnetic Map.
 Mineral Map # 092C069
 Map provided by Tre Guis Minerals Ltd.
 Web www.treguis.com

Appendix 5



ALS Chemex

EXCELLENCE IN ANALYTICAL CHEMISTRY

ALS Canada Ltd.

212 Brooksbank Avenue
North Vancouver BC V7J 2C1

Phone: 604 984 0221 Fax: 604 984 0218 www.alschemex.com

To: LE BARON PROSPECTING
9298 CHESTNUT RD.
CHEMAINUS BC V0R 1K5

Section A

INVOICE NUMBER 1418594

BILLING INFORMATION	
Certificate:	VA06064637
Sample Type:	Rock
Account:	LEBPRO
Date:	24-AUG-2006
Project:	Le Baron #10
P.O. No.:	
Quote:	
Terms:	Due on Receipt C3
Comments:	

ANALYSED FOR			UNIT	TOTAL
QUANTITY	CODE	DESCRIPTION	PRICE	
1	BAT-01	Administration Fee	30.00	30.00
3	PREP-31	Crush, Split, Pulverize	6.00	18.00
0.88	PREP-31	Weight Charge (kg) - Crush, Split, Pulverize	0.30	0.26
3	ME-ICP61	27 element four acid ICP-AES	8.25	24.75
3	GEO-4ACID	Four acid "near total" dig	3.75	11.25
1	Ag-AA62	Ore grade Ag - four acid / AAS	3.75	3.75
1	ASY-4ACID	Assay four acid digestion	6.25	6.25
1	Cu-AA62	Ore grade Cu - four acid / AAS	3.75	3.75
1	Pb-AA62	Ore grade Pb - four acid / AAS	3.75	3.75
1	Zn-AA62	Ore grade Zn - four acid / AAS	3.75	3.75

SUBTOTAL (CAD) \$ 105.51

R100938885 GST \$ 6.33

TOTAL PAYABLE (CAD) \$ 111.84

To: LE BARON PROSPECTING
ATTN: SCOTT PHILLIPS
9298 CHESTNUT RD.
CHEMAINUS BC V0R 1K5

Payment may be made by: Cheque or Bank Transfer

Beneficiary Name:	ALS Canada Ltd.
Bank:	Royal Bank of Canada
SWIFT:	ROYCCAT2
Address:	Vancouver, BC, CAN
Account:	003-00010-1001098

Please Remit Payments To :

ALS Chemex

212 Brooksbank Avenue
North Vancouver BC V7J 2C1

PAID



ALS Chemex

EXCELLENCE IN ANALYTICAL CHEMISTRY

ALS Canada Ltd.

212 Brooksbank Avenue
North Vancouver BC V7J 2C1
Phone: 604 984 0221 Fax: 604 984 0218 www.alschemex.com

To: LE BARON PROSPECTING
9298 CHESTNUT RD.
CHEMAINUS BC V0R 1K5

Page: 1
Finalized Date: 24-AUG-2006
Account: LEBPRO



CERTIFICATE VA06064637

Project: Le Baron #10

P.O. No.:

This report is for 3 Rock samples submitted to our lab in Vancouver, BC, Canada on 12-JUL-2006.

The following have access to data associated with this certificate:

SCOTT PHILLIPS

SAMPLE PREPARATION

ALS CODE	DESCRIPTION
WEI-21	Received Sample Weight
LOG-22	Sample login - Rcd w/o BarCode
CRU-31	Fine crushing - 70% <2mm
SPL-21	Split sample - riffle splitter
PUL-31	Pulverize split to 85% <75 um

ANALYTICAL PROCEDURES

ALS CODE	DESCRIPTION	INSTRUMENT
Cu-AA62	Ore grade Cu - four acid / AAS	AAS
Pb-AA62	Ore grade Pb - four acid / AAS	AAS
Zn-AA62	Ore grade Zn - four acid / AAS	AAS
ME-ICP61	27 element four acid ICP-AES	ICP-AES
Ag-AA62	Ore grade Ag - four acid / AAS	AAS

To: LE BARON PROSPECTING
ATTN: SCOTT PHILLIPS
9298 CHESTNUT RD.
CHEMAINUS BC V0R 1K5

This is the Final Report and supersedes any preliminary report with this certificate number. Results apply to samples as submitted. All pages of this report have been checked and approved for release.

Signature:

Keith Rogers, Executive Manager Vancouver Laboratory



ALS Chemex

EXCELLENCE IN ANALYTICAL CHEMISTRY

ALS Canada Ltd.

212 Brooksbank Avenue
North Vancouver BC V7J 2C1

Phone: 604 984 0221 Fax: 604 984 0218 www.alschemex.com

To: LE BARON PROSPECTING
9298 CHESTNUT RD.
CHEMAINUS BC V0R 1K5

Page: 2 - A
Total # Pages: 2 (A - C)
Finalized Date: 24-AUG-2006
Account: LEBPRO

Project: Le Baron #10



CERTIFICATE OF ANALYSIS VA06064637

Sample Description	Method Analyte Units LOI	WEI-21 Recvd Wt. kg	ME-ICP61 Ag ppm	ME-ICP61 Al %	ME-ICP61 As ppm	ME-ICP61 Ba ppm	ME-ICP61 Be ppm	ME-ICP61 Bi ppm	ME-ICP61 Ca %	ME-ICP61 Cd ppm	ME-ICP61 Co ppm	ME-ICP61 Cr ppm	ME-ICP61 Cu ppm	ME-ICP61 Fe %	ME-ICP61 K %	ME-ICP61 Mg %
		0.02	0.5	0.01	5	10	0.5	2	0.01	0.5	1	1	1	0.01	0.01	0.01
B314581		0.32	<0.5	0.82	<5	210	<0.5	<2	0.21	<0.5	5	17	34	0.93	0.25	0.22
B314582		0.38	>100	0.28	100	150	<0.5	<2	0.01	>500	<1	<1	>10000	2.34	0.11	0.02
B314583		0.18	2.1	8.51	29	120	<0.5	<2	4.76	12.0	69	475	219	9.36	0.18	6.44



ALS Chemex

EXCELLENCE IN ANALYTICAL CHEMISTRY
ALS Canada Ltd.

212 Brooksbank Avenue
North Vancouver BC V7J 2C1
Phone: 604 984 0221 Fax: 604 984 0218 www.alschemex.com

To: LE BARON PROSPECTING
9298 CHESTNUT RD.
CHEMAINUS BC V0R 1K5

Page: 2 - B
Total # Pages: 2 (A - C)
Finalized Date: 24-AUG-2006
Account: LEBPRO



Project: Le Baron #10

CERTIFICATE OF ANALYSIS VA06064637

Sample Description	Method Analyte Units LOR	ME-ICP61	ME-ICP61	ME-ICP61	ME-ICP61	ME-ICP61	ME-ICP61	ME-ICP61	ME-ICP61	ME-ICP61	ME-ICP61	ME-ICP61	ME-ICP61	ME-ICP61	Ag-AA62	Cu-AA62
		Mn ppm 5	Mo ppm 1	Na % 0.01	Ni ppm 1	P ppm 10	Pb ppm 2	S % 0.01	Sb ppm 5	Sr ppm 1	Ti % 0.01	V ppm 1	W ppm 10	Zn ppm 2	Ag ppm 1	Cu % 0.01
B314581		2000	<1	0.06	15	760	4	0.01	<5	21	0.04	53	<10	20		
B314582		56	69	0.01	1	10	>10000	>10.0	134	13	<0.01	3	<10	>10000	229	2.36
B314583		2510	<1	2.47	479	370	1480	0.22	<5	496	0.40	260	<10	2670		



ALS Chemex

EXCELLENCE IN ANALYTICAL CHEMISTRY

ALS Canada Ltd.

212 Brooksbank Avenue

North Vancouver BC V7J 2C1

Phone: 604 984 0221 Fax: 604 984 0218 www.alschemex.com

To: LE BARON PROSPECTING

9298 CHESTNUT RD.

CHEMAINUS BC V0R 1K5

Page: 2 - C

Total # Pages: 2 (A - C)

Finalized Date: 24-AUG-2006

Account: LEBPRO

Project: Le Baron #10



CERTIFICATE OF ANALYSIS VA06064637

Sample Description	Method Analyte Units LOD	Pb-AA62	Zn-AA62
		Pb %	Zn %
B314581 B314582 B314583		0.01 20.3	0.01 >30.0



ALS Chemex

EXCELLENCE IN ANALYTICAL CHEMISTRY

ALS Canada Ltd.
212 Brooksbank Avenue
North Vancouver BC V7J 2C1
Phone: 604 984 0221 Fax: 604 984 0218 www.alschemex.com

To: LE BARON PROSPECTING
9298 CHESTNUT RD.
CHEMAINUS BC V0R 1K5

Section B

INVOICE NUMBER 1418596

BILLING INFORMATION	
Certificate:	VA06064638
Sample Type:	Rock
Account:	LEBPRO
Date:	22-AUG-2006
Project:	Le Baron #12
P.O. No.:	
Quote:	
Terms:	Due on Receipt C3
Comments:	

ANALYSED FOR			UNIT	TOTAL
QUANTITY	CODE	DESCRIPTION	PRICE	
1	BAT-01	Administration Fee	30.00	30.00
3	PREP-31	Crush, Split, Pulverize	6.00	18.00
0.58	PREP-31	Weight Charge (kg) - Crush, Split, Pulverize	0.30	0.17
3	ME-ICP61	27 element four acid ICP-AES	8.25	24.75
3	GEO-4ACID	Four acid "near total" dig	3.75	11.25

To: LE BARON PROSPECTING
ATTN: SCOTT PHILLIPS
9298 CHESTNUT RD.
CHEMAINUS BC V0R 1K5

SUBTOTAL (CAD)	\$	84.17
R100938885 GST	\$	5.05
TOTAL PAYABLE (CAD)	\$	89.22

Payment may be made by: Cheque or Bank Transfer

Beneficiary Name:	ALS Canada Ltd.
Bank:	Royal Bank of Canada
SWIFT:	ROYCCAT2
Address:	Vancouver, BC, CAN
Account:	003-00010-1001098

Please Remit Payments To :
ALS Chemex
 212 Brooksbank Avenue
 North Vancouver BC V7J 2C1

PAID



ALS Chemex

EXCELLENCE IN ANALYTICAL CHEMISTRY

ALS Canada Ltd.

212 Brooksbank Avenue

North Vancouver BC V7J 2C1

Phone: 604 984 0221 Fax: 604 984 0218 www.alschemex.com

To: LE BARON PROSPECTING
9298 CHESTNUT RD.
CHEMAINUS BC V0R 1K5

Page: 1
Finalized Date: 22-AUG-2006
This copy reported on 23-AUG-2006
Account: LEBPRO

2

CERTIFICATE VA06064638

Project: Le Baron #12

P.O. No.:

This report is for 3 Rock samples submitted to our lab in Vancouver, BC, Canada on 12-JUL-2006.

The following have access to data associated with this certificate:

SCOTT PHILLIPS

SAMPLE PREPARATION

ALS CODE	DESCRIPTION
WEI-21	Received Sample Weight
LOG-22	Sample login - Rcd w/o BarCode
CRU-31	Fine crushing - 70% <2mm
SPL-21	Split sample - riffle splitter
PUL-31	Pulverize split to 85% <75 um

ANALYTICAL PROCEDURES

ALS CODE	DESCRIPTION	INSTRUMENT
ME-ICP61	27 element four acid ICP-AES	ICP-AES

To: LE BARON PROSPECTING
ATTN: SCOTT PHILLIPS
9298 CHESTNUT RD.
CHEMAINUS BC V0R 1K5

This is the Final Report and supersedes any preliminary report with this certificate number. Results apply to samples as submitted. All pages of this report have been checked and approved for release.

Signature:

Keith Rogers, Executive Manager Vancouver Laboratory



ALS Chemex

EXCELLENCE IN ANALYTICAL CHEMISTRY

ALS Canada Ltd.

212 Brooksbank Avenue

North Vancouver BC V7J 2C1

Phone: 604 984 0221 Fax: 604 984 0218 www.alschemex.com

To: LE BARON PROSPECTING
9298 CHESTNUT RD.
CHEMAINUS BC V0R 1K5

Page: 2 - A
Total # Pages: 2 (A - B)
Finalized Date: 22-AUG-2006
Account: LEBPRO

Project: Le Baron #12



CERTIFICATE OF ANALYSIS VA06064638

Sample Description	Method Analyte Units LOR	WEI-21	ME-ICP61	ME-ICP61	ME-ICP61	ME-ICP61	ME-ICP61	ME-ICP61	ME-ICP61	ME-ICP61	ME-ICP61	ME-ICP61	ME-ICP61	ME-ICP61	ME-ICP61	ME-ICP61
		Recvd Wt.	Ag	Al	As	Ba	Be	Bi	Ca	Cd	Co	Cr	Cu	Fe	K	Mg
		kg	ppm	%	ppm	ppm	ppm	ppm	%	ppm	ppm	ppm	ppm	%	%	%
		0.02	0.5	0.01	5	10	0.5	2	0.01	0.5	1	1	1	0.01	0.01	0.01
B314584		0.16	<0.5	9.52	12	350	0.7	<2	5.66	<0.5	18	15	32	6.00	0.84	2.28
B314585		0.18	<0.5	1.48	36	<10	<0.5	<2	20.1	<0.5	10	<1	10	16.50	0.01	0.58
B314586		0.24	<0.5	8.32	11	360	<0.5	<2	5.46	<0.5	35	221	40	7.45	0.49	5.40



ALS Chemex

EXCELLENCE IN ANALYTICAL CHEMISTRY

ALS Canada Ltd.

212 Brooksbank Avenue
North Vancouver BC V7J 2C1

Phone: 604 984 0221 Fax: 604 984 0218 www.alschemex.com

To: LE BARON PROSPECTING
9298 CHESTNUT RD.
CHEMAINUS BC V0R 1K5

Page: 2 - B
Total # Pages: 2 (A - B)
Finalized Date: 22-AUG-2006
Account: LEBPRO



Project: Le Baron #12

CERTIFICATE OF ANALYSIS VA06064638

Sample Description	Method	ME-ICP61	ME-ICP61	ME-ICP61	ME-ICP61	ME-ICP61	ME-ICP61	ME-ICP61	ME-ICP61	ME-ICP61	ME-ICP61	ME-ICP61	ME-ICP61	ME-ICP61
	Analyte	Mn	Mo	Na	Ni	P	Pb	S	Sb	Sr	Ti	V	W	Zn
	Units	ppm	ppm	%	ppm	ppm	ppm	%	ppm	ppm	%	ppm	ppm	ppm
LOR	5	1	0.01	1	10	2	0.01	5	1	0.01	1	10	2	
B314584		1135	<1	2.27	9	1310	85	0.02	<5	511	0.51	202	<10	185
B314585		3920	<1	0.03	<1	50	33	0.07	<5	17	0.03	7	20	72
B314586		980	<1	1.97	60	730	60	0.01	<5	424	0.38	219	<10	162



ALS Chemex

EXCELLENCE IN ANALYTICAL CHEMISTRY

ALS Canada Ltd.

212 Brooksbank Avenue

North Vancouver BC V7J 2C1

Phone: 604 984 0221 Fax: 604 984 0218 www.alschemex.com

To: LE BARON PROSPECTING

9298 CHESTNUT RD.

CHEMAINUS BC V0R 1K5

Page: 2 - C

Total # Pages: 2 (A - C)

Finalized Date: 24-AUG-2006

Account: LEBPRO



Project: Le Baron #10

CERTIFICATE OF ANALYSIS VA06064637

Sample Description	Method Analyte Units LOE	Pb-AA62	Zn-AA62
		Pb %	Zn %
B314581			
B314582		20.3	>30.0
B314583			



ALS Chemex

EXCELLENCE IN ANALYTICAL CHEMISTRY

ALS Canada Ltd.

212 Brooksbank Avenue
North Vancouver BC V7J 2C1

Phone: 604 984 0221 Fax: 604 984 0218 www.alschemex.com

To: LE BARON PROSPECTING
9298 CHESTNUT RD.
CHEMAINUS BC V0R 1K5

SECTION C

INVOICE NUMBER 1418589

BILLING INFORMATION	
Certificate:	VA06064636
Sample Type:	Stream Sediment
Account:	LEBPRO
Date:	21-AUG-2006
Project:	Le Baron #53
P.O. No.:	
Quote:	
Terms:	Due on Receipt C3
Comments:	

ANALYSED FOR			UNIT	TOTAL
QUANTITY	CODE	DESCRIPTION	PRICE	
1	BAT-01	Administration Fee	30.00	30.00
1	PREP-41	Dry, Sieve (180 um) Soil	1.25	1.25
0.32	PREP-41	Weight Charge (kg) - Dry, Sieve (180 um) Soil	1.75	0.56
1	ME-ICP61	27 element four acid ICP-AES	8.25	8.25
1	GEO-4ACID	Four acid "near total" dig	3.75	3.75

To: **LE BARON PROSPECTING**
ATTN: SCOTT PHILLIPS
9298 CHESTNUT RD.
CHEMAINUS BC V0R 1K5

SUBTOTAL (CAD)	\$	43.81
R100938885 GST	\$	2.63
TOTAL PAYABLE (CAD)	\$	46.44

Payment may be made by: Cheque or Bank Transfer

Beneficiary Name:	ALS Canada Ltd.
Bank:	Royal Bank of Canada
SWIFT:	ROYCCAT2
Address:	Vancouver, BC, CAN
Account:	003-00010-1001098

Please Remit Payments To :

ALS Chemex

212 Brooksbank Avenue
North Vancouver BC V7J 2C1

PAID



ALS Chemex

EXCELLENCE IN ANALYTICAL CHEMISTRY

ALS Canada Ltd.

212 Brooksbank Avenue

North Vancouver BC V7J 2C1

Phone: 604 984 0221 Fax: 604 984 0218 www.alschemex.com

To: LE BARON PROSPECTING
9298 CHESTNUT RD.
CHEMAINUS BC V0R 1K5

Page: 1
Finalized Date: 21-AUG-2006
This copy reported on 22-AUG-2006
Account: LEBPRO

②

CERTIFICATE VA06064636

Project: Le Baron #53
P.O. No.:
This report is for 1 Stream Sediment sample submitted to our lab in Vancouver, BC, Canada on 12-JUL-2006.
The following have access to data associated with this certificate:
SCOTT PHILLIPS

SAMPLE PREPARATION

ALS CODE	DESCRIPTION
WEI-21	Received Sample Weight
LOG-22	Sample login - Rod w/o BarCode
SCR-41	Screen to -180um and save both

ANALYTICAL PROCEDURES

ALS CODE	DESCRIPTION	INSTRUMENT
ME-ICP61	27 element four acid ICP-AES	ICP-AES

To: LE BARON PROSPECTING
ATTN: SCOTT PHILLIPS
9298 CHESTNUT RD.
CHEMAINUS BC V0R 1K5

This is the Final Report and supersedes any preliminary report with this certificate number. Results apply to samples as submitted. All pages of this report have been checked and approved for release.

Signature: 
Keith Rogers, Executive Manager Vancouver Laboratory



ALS Chemex
EXCELLENCE IN ANALYTICAL CHEMISTRY
 ALS Canada Ltd.

212 Brooksbank Avenue
 North Vancouver BC V7J 2C1
 Phone: 604 984 0221 Fax: 604 984 0218 www.alschemex.com

To: LE BARON PROSPECTING
 9298 CHESTNUT RD.
 CHEMAINUS BC V0R 1K5

Page: 2 - A
 Total # Pages: 2 (A - B)
 Finalized Date: 21-AUG-2006
 Account: LEBPRO

9

Project: Le Baron #53

CERTIFICATE OF ANALYSIS VA06064636

Method	WEI-21	ME-ICP61	ME-ICP61	ME-ICP61	ME-ICP61	ME-ICP61	ME-ICP61	ME-ICP61	ME-ICP61	ME-ICP61	ME-ICP61	ME-ICP61	ME-ICP61	ME-ICP61	ME-ICP61
Analyte	Recvd Wt.	Ag	Al	As	Ba	Be	Bi	Ca	Cd	Co	Cr	Cu	Fe	K	Mg
Units	kg	ppm	%	ppm	ppm	ppm	ppm	%	ppm	ppm	ppm	ppm	%	%	%
LOR	0.02	0.5	0.01	5	10	0.5	2	0.01	0.5	1	1	1	0.01	0.01	0.01
B314587	0.32	2.4	6.08	16	60	0.6	<2	5.22	<0.5	50	28	9440	11.65	0.68	1.01



ALS Chemex

EXCELLENCE IN ANALYTICAL CHEMISTRY

ALS Canada Ltd.

212 Brooksbank Avenue

North Vancouver BC V7J 2C1

Phone: 604 984 0221 Fax: 604 984 0218 www.alschemex.com

To: LE BARON PROSPECTING

9298 CHESTNUT RD.

CHEMAINUS BC V0R 1K5

Page: 2 - B

Total # Pages: 2 (A - B)

Finalized Date: 21-AUG-2006

Account: LEBPRO

0

Project: Le Baron #53

CERTIFICATE OF ANALYSIS VA06064636

Sample Description	Method	ME-ICP61	ME-ICP61	ME-ICP61	ME-ICP61	ME-ICP61	ME-ICP61	ME-ICP61	ME-ICP61	ME-ICP61	ME-ICP61	ME-ICP61	ME-ICP61	ME-ICP61
	Analyte	Mn	Mo	Na	Ni	P	Pb	S	Sb	Sr	Ti	V	W	Zn
	Units LOR	ppm	ppm	%	ppm	ppm	ppm	%	ppm	ppm	%	ppm	ppm	ppm
B314587		1870	<1	1.09	10	590	23	7.28	<5	468	0.85	88	<10	42