

ASSESSMENT REPORT
ON THE 2006
GEOLOGICAL MAPPING
MERIDIAN CLAIM GROUP

REVELSTOKE MINING DIVISION

NTS 82K/072
82K/082

LAT. 50°47' NORTH, LONG. 117° 31' WEST

OPERATOR: MANSON CREEK RESOURCES LTD.

PROPERTY OWNER: LOUIS ARTHUR DAVIS

AUTHOR: REGAN CHERNISH, P.Geol

SUBMITTED: NOVEMBER 15, 2006

GEOLOGICAL SURVEY BRANCH
VANCOUVER

28,630

TABLE OF CONTENTS

	<u>Page</u>
1.0 SUMMARY	4
2.0 INTRODUCTION	5
2.1 Location and Access	5
2.2 Ownership	6
2.3 Mineral Tenure	6
2.4 Exploration History	8
3.0 GEOLOGY AND MINERALIZATION	9
3.1 Regional Geology	9
3.2 Property Geology	9
3.3 Mineralization	11
4.0 2006 WORK PROGRAM AND RESULTS	11
4.1 Program Details	11
4.2 Rock Geochemistry	14
5.0 CONCLUSIONS	17
6.0 RECOMMENDATIONS	18
7.0 LIST OF REFERENCES	19

FIGURES TABLES AND APPENDICES

<u>Figures</u>		Page
Figure 1	Meridian property location map	5
Figure 2	Meridian property claim location map	7
Figure 3	Eva map section view	8
Figure 4	Meridian property simplified geology map	10
Figure 5	Meridian Rock Sample Location Map	13
Figure 6	Meridian property gold assay plot	15
Figure 7	Meridian property silver assay plot	16
 <u>Tables</u>		
Table 1	Claim status	6
 <u>Appendices</u>		
APPENDIX A	Certificate of qualifications	20
APPENDIX B	Statement of costs	21
APPENDIX C	Rock analyses	23
APPENDIX D	Rock Assay Plots	24
	• Gold	
	• Silver	

1.0 SUMMARY

The Meridian property is located 40 kilometers south-southeast of Revelstoke, British Columbia, and is being explored by Manson Creek Resources Ltd. ('Manson Creek') under an option agreement with the property owner L. Davis. The property has seen limited production in the early 20th century but it has had very little exploration conducted on it subsequently. Limited exploration was conducted 1987-88 by Granges Exploration Ltd.

The property covers a sequence of metasedimentary and metavolcanic rocks of the Lower Paleozoic Lardeau Group, specifically the Broadview and Jowett formations. The younger Broadview phyllites and argillites cover well over 95% of the property with the metavolcanics of the Jowett formation comprising the remainder. The units strike northwest – southeast, approximately parallel to the Camborne regional fault which bisects the claim block.

The Camborne fault hosts or is in close association with a majority of the 86 mineral occurrences in Beaton – Camborne historic mining camp, of which Meridian is a part.

The mineralization of the area is hosted within quartz veins that are emplaced essentially bedding parallel to the host stratigraphy. The veins are of centimeter to meter scale and occur alone or more commonly en-echelon in a zone covering up to several hundred meters. The mineralization on the Meridian claims is primarily gold and silver with minor, locally significant lead and zinc.

The claim block saw abundant activity from 1900 to the early 1920's with the discovery of gold mineralization and the subsequent staking rush which ensued. At least 5 mines operated intermittently on what is now known as the Meridian Claim block. Due to fragmented land tenure and metallurgical issues the activity essentially ceased after the 1920's. No documented property wide exploration occurred until the 1980's.

Granges Exploration Ltd. ('Granges') conducted ground exploration programs in 1987 and 1988. The programs consisted of soil and rock sampling, limited HLEM geophysical surveys and limited diamond drilling.

Manson Creek conducted an initial geological field program in May 2006, which is the subject of this report. This program involved traversed across much of the claim block in an effort to map the geology and locate the historic mineral occurrences.

2.0 INTRODUCTION

2.1 Location and Access

The Meridian group of claims is located some 40 kilometers SE of the town of Revelstoke or 17 kilometers NNE of the town of Trout Lake, British Columbia (Figure 1.). The claim group is located immediately north of the historic mining town of Camborne on the east side of the Incomappleux River which flows into the northeast arm of Upper Arrow Lake. The property elevation ranges from 500 meters to 1,200 meters above mean sea level.

The Meridian claims are accessed via highway 31 from the Galena Bay ferry on Upper Arrow Lake. It is 18km to the Beaton/Camborne junction, then 18.5km through the area once occupied by the historic mining town of Camborne to the access to the claims. The ATV road from that point leads up to the center of the claim block.

The typical summer field season extends from late May to late November.

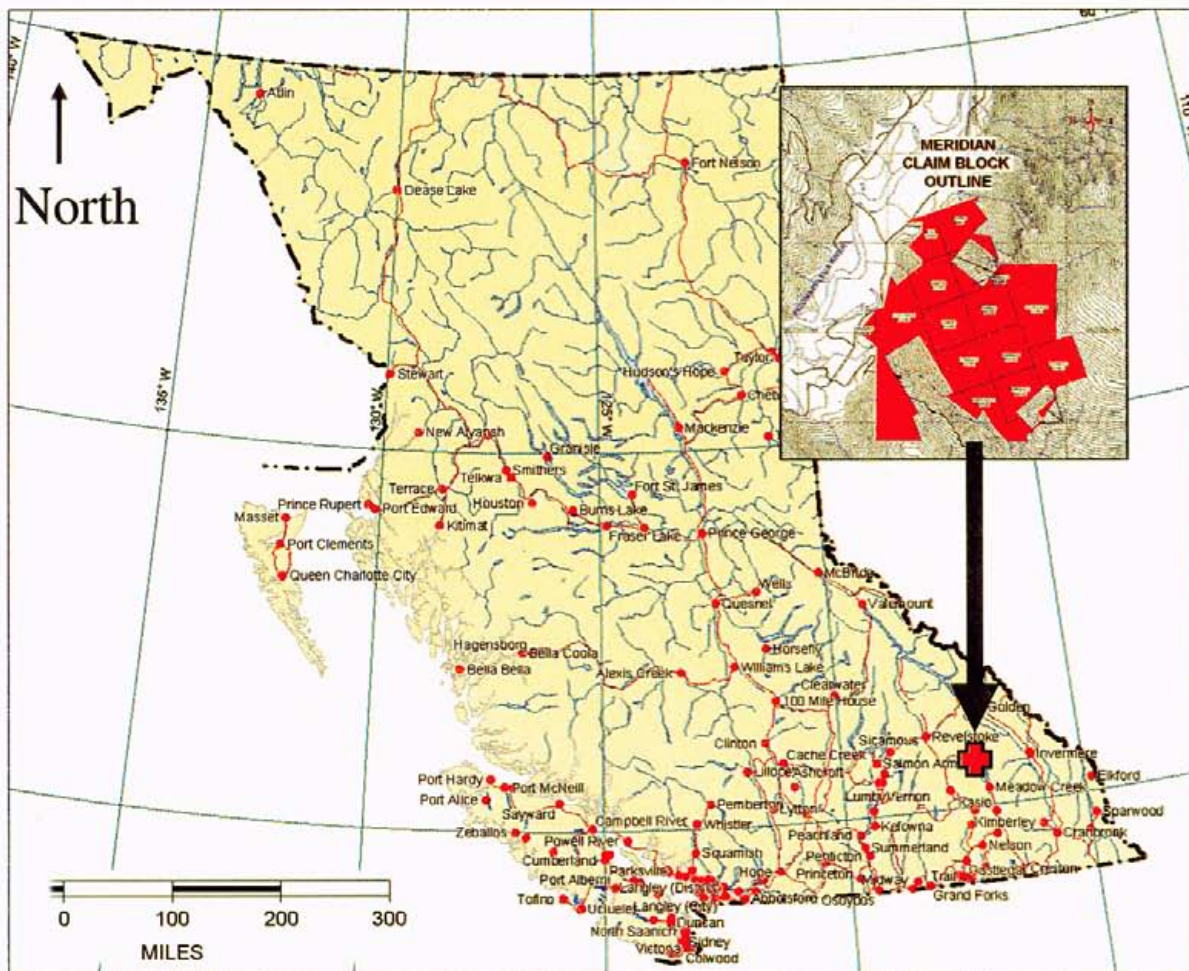


Figure 1. Meridian property location map.

2.2 Ownership

The Meridian property consists of 12 mineral tenures, Figure 2, owned by Louis Arthur Davis. Manson Creek has entered into an agreement with the property vendor whereby a 100% interest in the aforementioned tenures can be purchased by the Company for a cash consideration of \$87,500.00 and the issuance of 375,000 common shares over a 4 ½ year term. The option is currently in its second year. The vendor will retain a 2.0% net smelter royalty, 1.5% of which can be purchased for 1,500,000.00.

2.3 Mineral Tenure

The Meridian property consists of ground staked legacy claims located in the Revelstoke Mining Division. The claim tenure number, and expiry dates are summarized in Table 1.

Table 1. Claim status.

Claim Name	Tenure #	Expiry date
Annette	391107	December 1, 2009
Pamela	391108	December 1, 2009
Donkey	391109	December 1, 2009
Michelle	391110	December 1, 2009
Cangeo 1	391161	December 1, 2009
Cangeo 2	391162	December 1, 2009
Cangeo 3	391163	December 1, 2009
Cangeo 4	391181	December 1, 2009
Lucky Duck	391366	December 1, 2009
Cangeo 5	391436	December 1, 2009
Miki	396593	December 1, 2009
Mini	396594	December 1, 2009

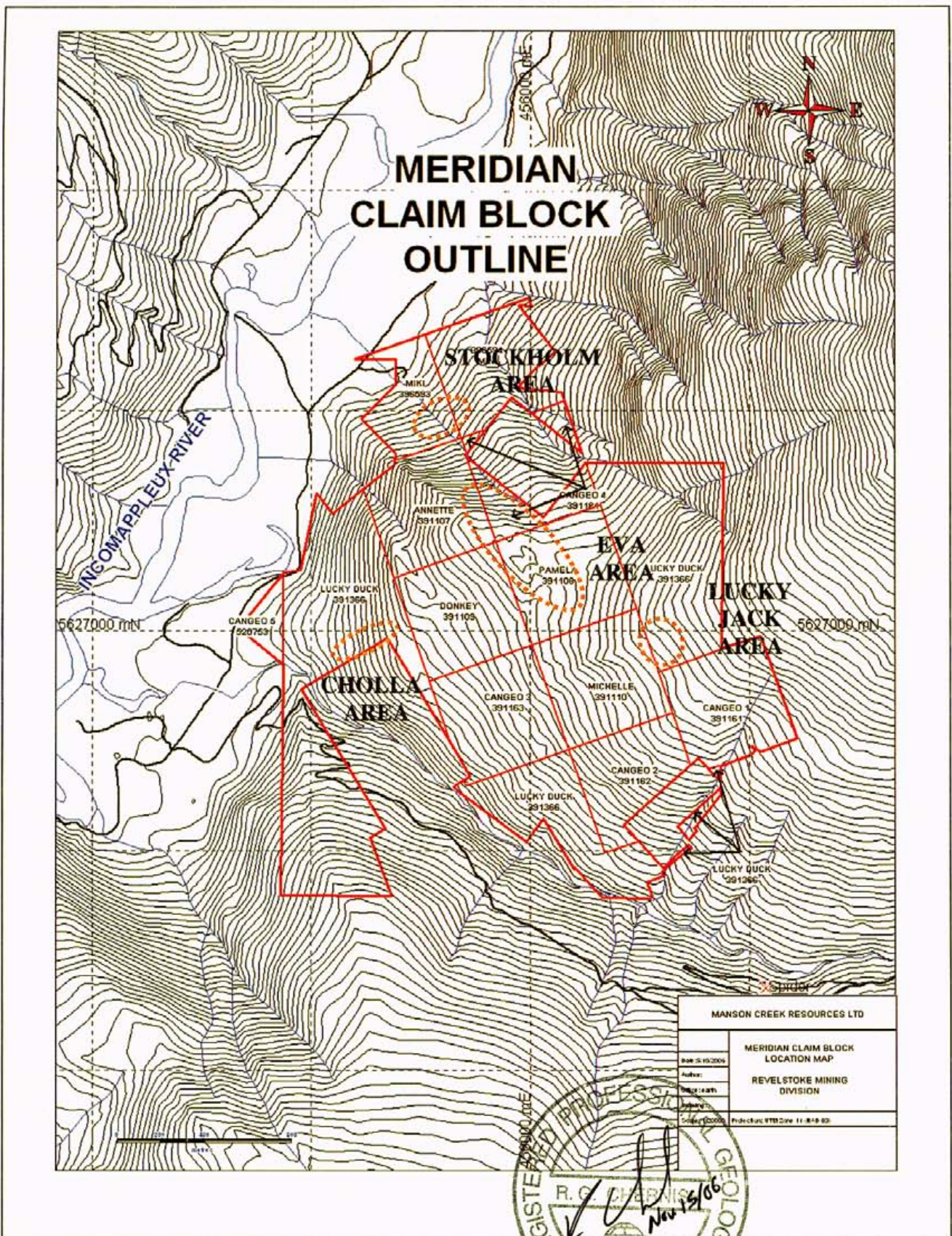


Figure 2. Meridian property claim location map.

2.4 Exploration History

At the turn of the 20th century, a number of thriving mining communities such as Trout Lake, Fergusson, and Camborne existed in the Lardeau District. The initial draw for most in the area was the Eva gold discovery on the Iron Dollar claim in 1900; this discovery was to later become part of the EVA Mine. Subsequent to this discovery the Meridian claim area hosted numerous producers, an excellent summary is presented in Church 1999, that produced 543.9 kilograms of gold and 165.5 kilograms of silver from 88,763 tonnes of mined material (source BC government MINFILE). This mining activity was generally of limited scale and intermittent nature up till approximately the mid 1920's (Figure 3). Minor recovery and salvage work was done in the late 1940's. No 'modern' exploration was conducted on the property till the late 80's when Granges Exploration Ltd. ('Granges) conducted limited exploration work in 1987-88.

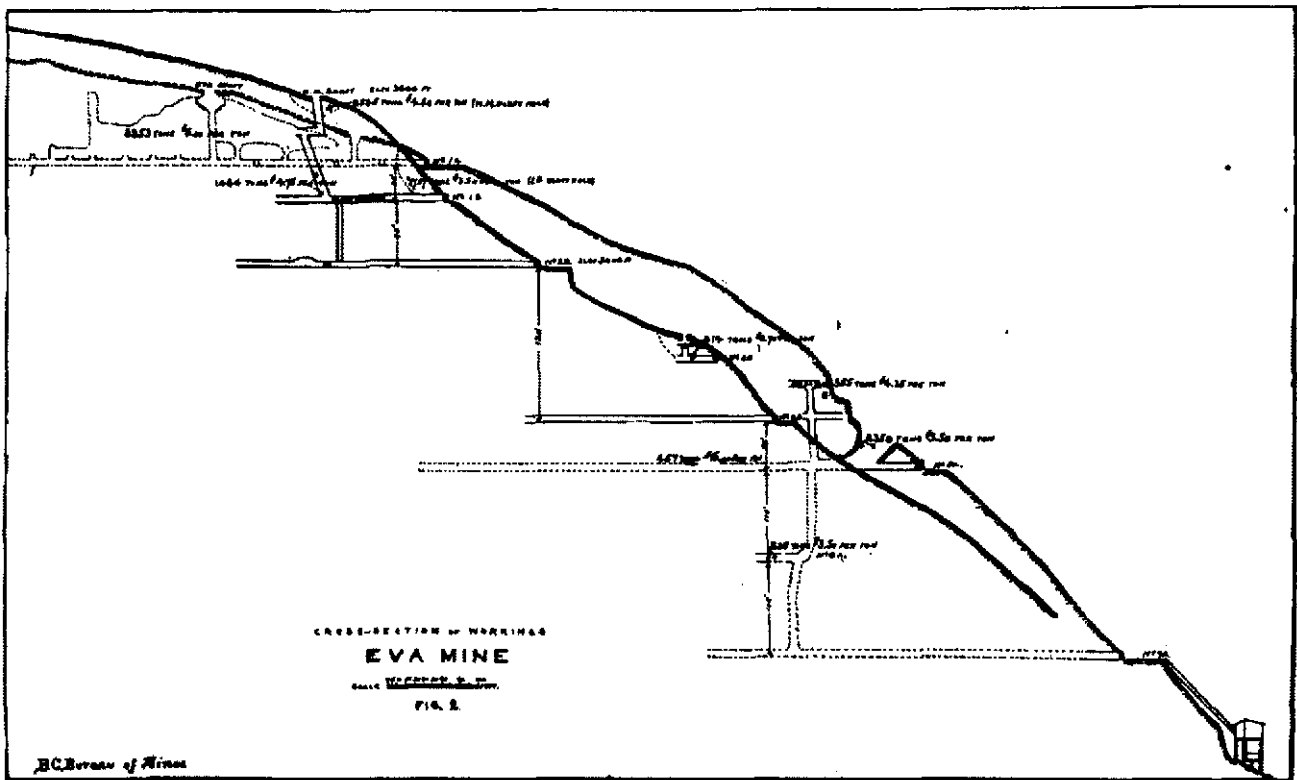


Figure 3. Eva Map Section View, 1914

In 1987-88 Granges conducted field exploration on much of the current Meridian claim block. Granges chained and flagged 26.98 kilometers of grid over portions of the claim block. Geophysics was then conducted with 12.37 kilometers of Horizontal Loop Electro Magnetic (HLEM) surveys over on sections of this gridded area. A total of 2,123 soil samples were collected in the course of the exploration over the two field seasons. A total of at least 152 rock samples were taken. In addition to this work, surface and underground mapping was completed.

In 2006 Manson Creek conducted a geological field program from May 17-25th. This program

involved the mapping and locating of historical workings, mapping and sampling of exposed mineralization and general prospecting this historic area. A total of 40 rock samples were taken for analysis during the course of the program.

3.0 GEOLOGY AND MINERALIZATION

3.1 Regional Geology

The Meridian property is located within rocks of the Kootenay Arc which lies between the Windermere-Purcell anticlinorium on the east and the Monashee and Shushwap metamorphic complexes to the west and northwest. The Lardeau Group metasedimentary and metavolcanic rocks underlie the property. These units are generally striking southeasterly with northeasterly dips of 50° to 80° and they are locally cut by joints oriented perpendicular to regional strike and dipping 40° to 80° to the northwest.

3.2 Property Geology

The Meridian property is underlain by rocks of the Lower Paleozoic Lardeau Group, specifically the Broadview formation and the Jowett formation (Figure 4). The metasedimentary rocks of the younger Broadview formation dominate and encompass over 95% of the claim group. The metavolcanic rocks of the Jowett formation comprise the remaining 5%. The Broadview formation rocks observed are dominated by green-grey phyllites with lesser green-grey argillites. The Jowett formation metavolcanics are comprised of what is thought to have been andesitic volcanics. The Jowett formation rocks are often associated with local increases in iron carbonate and local fuchsite.

Within these host rocks mineralization directly associated with quartz veining. The veins range from centimeter to meter scale in areas proximal to the Camborne regional fault. The veins appear to be located in zones of intense fracturing and some of the veins contain graphitic laminae which appear to be shear planes in the quartz veins themselves. The quartz veins can be described as open space filling in the zones of the intense fracturing and there is very limited to no wall rock alteration.

The Camborne fault is a regional scale structure which bisects the Meridian Claim group. The exact nature of the fault relatively poorly documented, however, many if not all of the 86 mineral occurrences in the Beaton – Camborne historic mining camp are found in relatively close association with this fault. The fault is more accurately a several hundred meter wide zone of faulting and shearing rather than a cleanly defined singular fault plane. The fault zone is striking approximately 140° to 160° with a dip that ranges from sub-vertical to 50° E.



Figure 4. Meridian property simplified geology map.

3.3 Mineralization

The mineralization of the claim block is associated with quartz veins present throughout the property. The quartz veins appear as single veins or more commonly as an echelon groups that are parallel or sub-parallel to the Camborne fault and occur up to several hundred meters away from the fault zone.

The mineralization, gold and silver, occurs within the veins and also along the selvages of the quartz veins. The gold appears as free gold within the quartz veins and can be associated with pyrite and / or minor graphitic lamina. The silver mineralization is often tetrahedrite and quite often the silver is associated with any lead mineralization that may be present.

4.0 2006 WORK PROGRAM AND RESULTS

4.1 Program Details

Manson Creek carried out a field exploration program on the Meridian property between May 17th and May 25th, 2006. This work program consisted of property wide reconnaissance style mapping and prospecting was conducted by R. Chernish P.Geol, D. Bryan P.Geol, and G. Clarke P.Geol.

A total of five days were spent traversing across much of the property, mapping in outcrop and sampling zones of mineralization. Much of the sampling was done in the Stockholm, Eva, Lucky Jack, and Cholla areas. During this work it was observed that due to the abundant glacial and vegetation cover, bedrock exposure over the property is less than 10%.

What was observed was small silicified out crops of the Broadview formation or minor outcropping of quartz veins. Occasionally, particularly in the northwest area of the claim group, the Broadview formation forms 20 – 40 meter vertical scarps paralleling the regional fabric. The May 2006 program focused on mapping, sampling, and prospecting in areas surrounding many of the historical mineral occurrences, particularly the Eva mine area. No Jowett formation rocks were observed in outcrop on the claim block during the May program.

All that is remaining in the Stockholm area are barely recognizable slump filled adit entrances and trenches. The area generally has less than 1% outcrop exposure with much of that proximal to the historic ruins. No structural detail was observable in this area. many of the samples taken from the zone were boulders in the waste piles adjacent to the workings due to the limited bedrock exposure.

The Eva area contains numerous open shafts, adits and trenches in varying degrees of decay. The Broadview phyllites and lesser argillites are moderately exposed in ridge tops and scarp faces. Local zones of regional fabric parallel quartz veins were observed proximal to the Eva workings. A number of samples were taken from these. The 5b and 7a adits were entered briefly and several silicified zones were sampled as well.

Bedrock exposure is again very low in the Lucky Jack area with the only exposure being on historic road cuts. The Broadview phyllites in this zone are more graphitic than those

observed on the rest of the claim block. the stratigraphy has a much more gentle dip here as it is striking 120° and dipping 30° to the east. Quartz veining and silicification were rare in this area of limited exposure. None of the historic workings were seen.

The Cholla location has the Broadview formation forming ridge spines that strike 120° - 140°. There are a number of old adits and trenches in the area and several samples were taken in due course.

Generally speaking, the bedding parallel foliation throughout the area strikes in a range from 120° to 160° on an outcrop scale. Dips were sub-vertical to east dipping of as shallow as 50°. The variation in the strike of the units conforms well to the variation in the regional trace of the Camborne fault on published regional maps of the area.

Most of the located outcrops displaying mineralization are associated with the 120° - 140° striking fabric and structures related to the Camborne fault. The Cholla area (Figure 5) differs from this generalized rule as the quartz veining in this area is associated with structures striking 226° with a sub-vertical dip. This structure contains a 30 meter long by 2 meter wide quartz vein that returned grab sample values of 46 grams per tonne (g/t) gold and 28 g/t silver. Possible drag folds were observed adjacent to this mineralized vein. If these are indeed drag folds it would imply that this mineralization is a later event to the dominant fabric and mineralization of the region. This occurrence is the only documented mineralized zone with this perpendicular orientation to the main mineralized trend on the property.

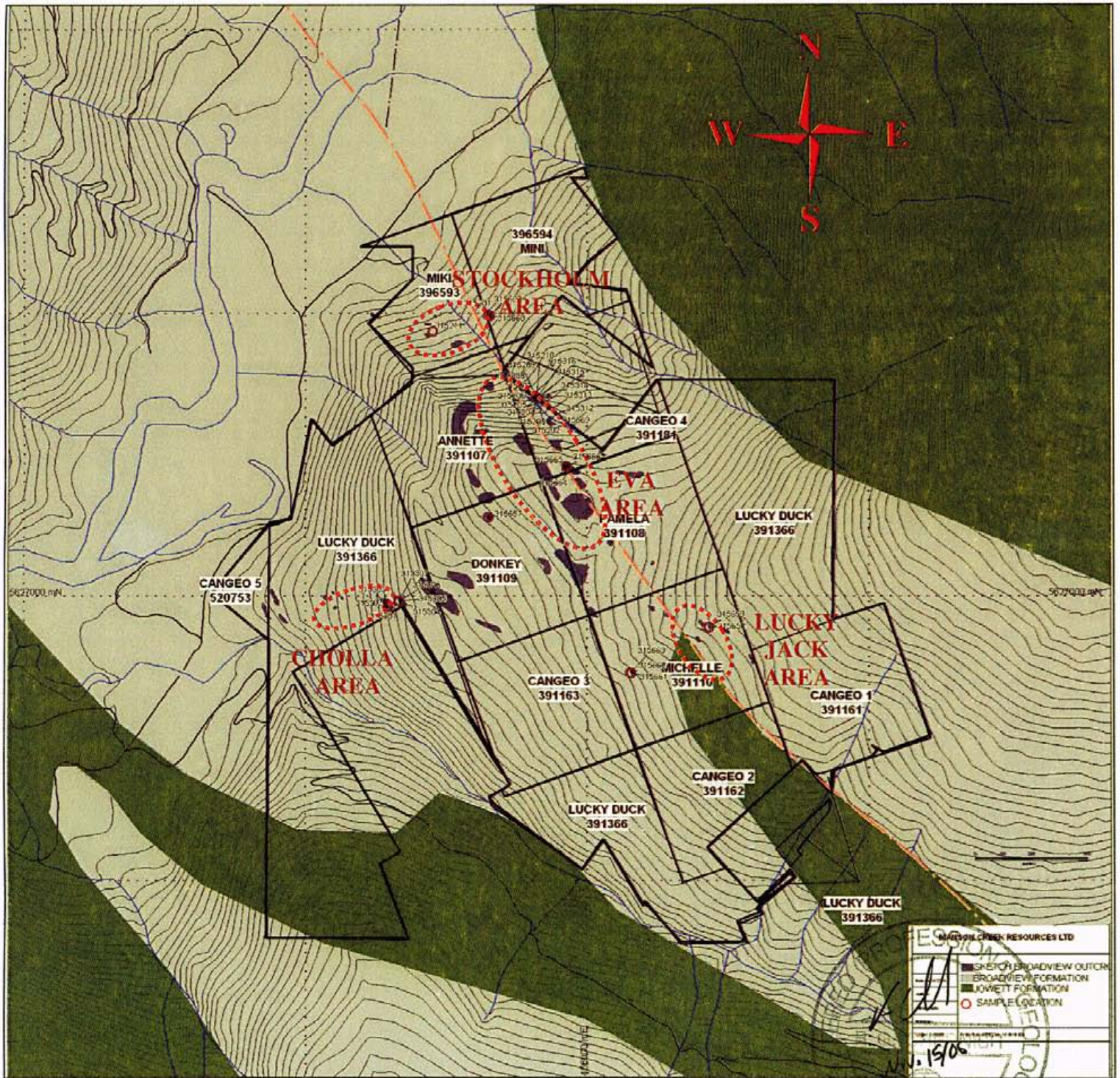


Figure 5. Meridian rock sample location map.

A total of 40 rock samples were collected during the program (Figure 6), they ranged from grab samples to continuous chip samples. The sample details are located in Appendix C. The sample locations are in NAD 83 zone 11. The magnetic declination used during the mapping was approximately 18° east.

4.2 Rock Geochemistry

Forty rock samples were collected during the May 2006 program on the Meridian property. The samples were collected in poly sample bags and shipped to ALS Chemex at 212 Brooksbank Ave., North Vancouver B.C., for analyses. All rocks samples for Au by atomic absorption plus 34 elements by aqua regia digestion and a combination of ICP-MS and ICP-AES (ALS Chemex package ME-ICP41).

Rock sample locations are shown in Figure 5 and are plotted along with the property geology. Information on the sample locations and sample type are listed with the assay values in Appendix C. Figure 6 displays the gold assay values plotted by location and Figure 7 provides silver assay information. The values plotted are in Parts per Million (PPM) and the 1:10,000 maps are provided in Appendix D.

The sampling results were disappointing as the highest outcrop sample was 12.2 g/t silver with the remaining results ranging from <0.2 to 10.0 g/t silver. The gold values were similarly low with 11.15 g/t being the highest gold assay from outcrop. Remaining gold values ranged from <0.005 to 7.92 g/t. the explanation for these apparent low values in an area of such high historic assay and production values is that any surficial material with higher assays was mined in the early 20th century. Dump samples taken replicated many of the historic values given in historic publications.

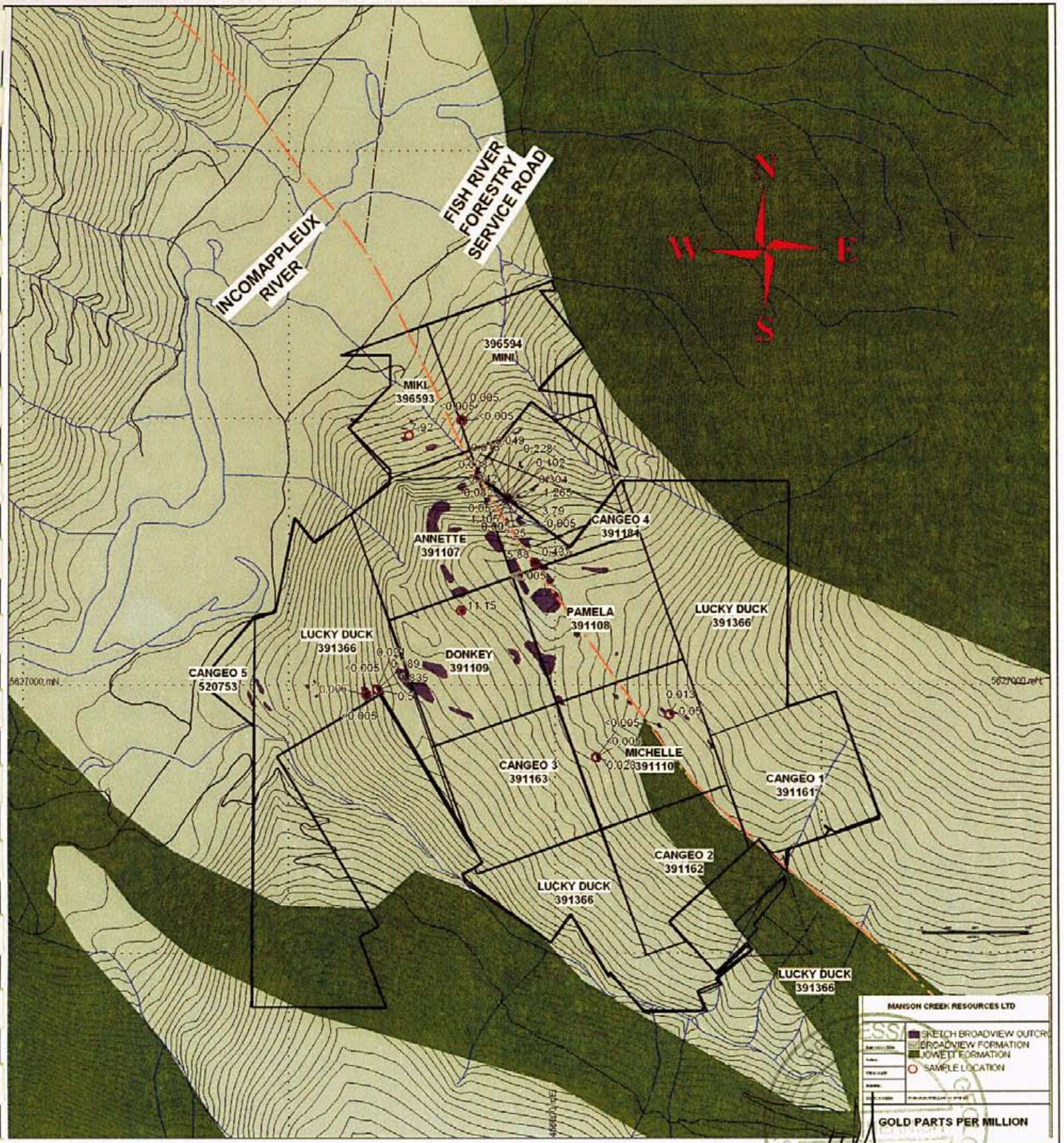


Figure 6. Meridian Property Gold Assay Plot.

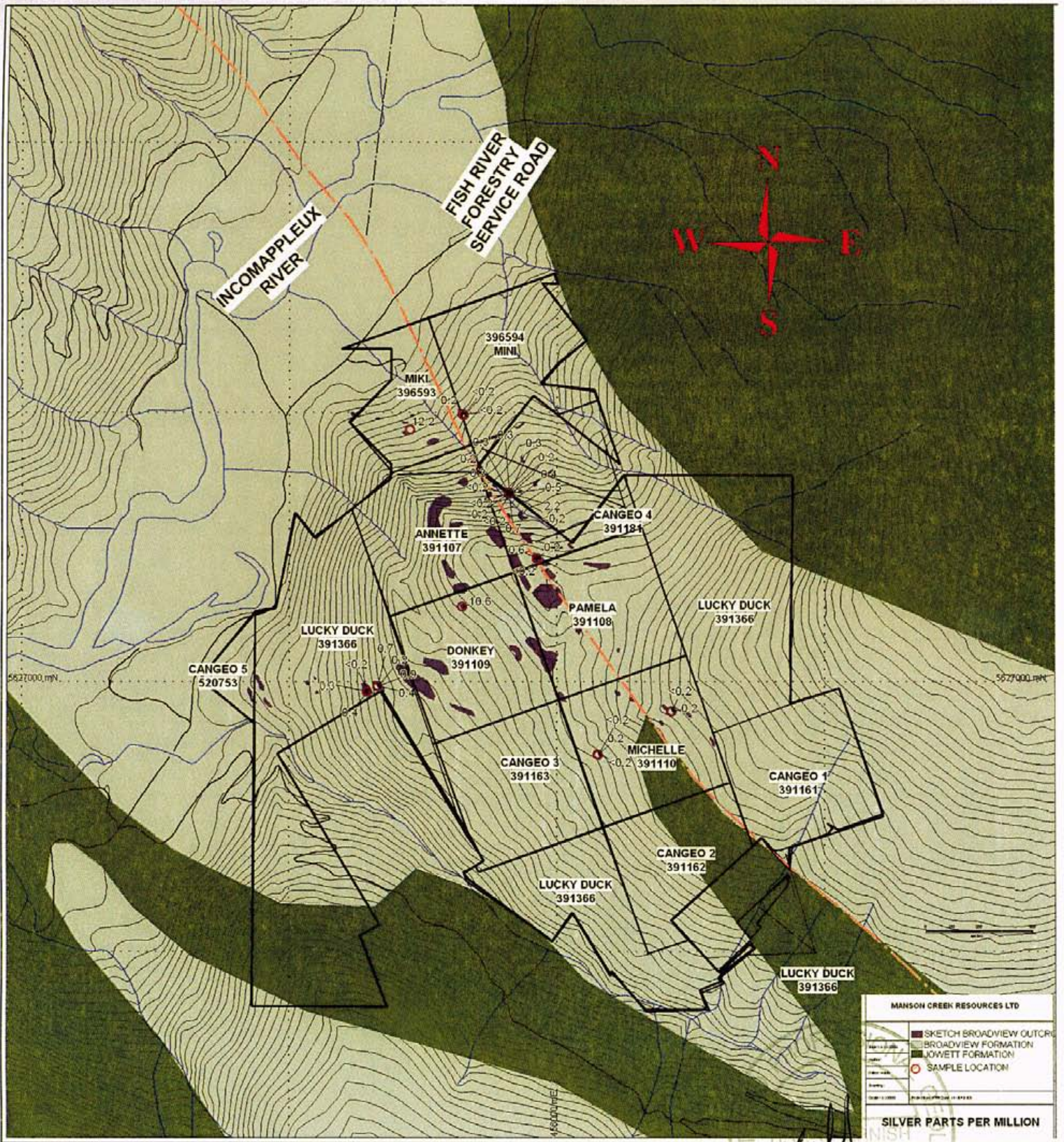


Figure 7. Meridian Property Silver Assay Plot.

K. L. L.
 Nov. 15/06
 REGISTRY
 N.W.T.

5.0 CONCLUSION

The Meridian claim group area has had a storied, albeit brief, production history in the early 20th century. Any surficial mineralization that was identified was tested via an adit or shaft and subsequently, only low grade and anomalous surficial values remain to this day. The controls on the emplacement of the mineralization are strongly related to the dominant structural feature bisecting the claim group, the Camborne fault.

The Camborne fault is actually a several hundred meter wide zone of shearing and faulting rather than a cleanly defined singular fault plane. This feature, striking 120° - 140° locally, is mirrored in the bedding parallel foliation in the surrounding Lardeau Group rocks. These metasedimentary and metavolcanic rocks host zones of centimeter to meter scale quartz veins containing anomalous gold and silver values.

The quartz veins are parallel to sub-parallel to the regional foliation and appear to pinch and swell along strike and depth. A notable exception to this is the Cholla veins which possibly post date the main mineralizing event and strike perpendicular to the regional foliation.

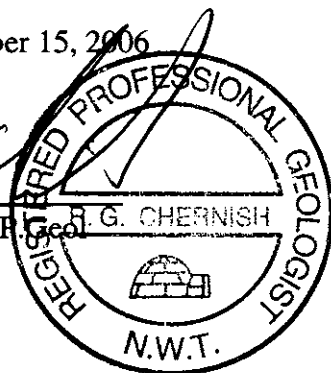
The Meridian property remains a viable exploration target for gold and silver mineralization. The property has not seen diamond drilling proximal to historic workings to test the structures that were mined historically.

6.0 RECOMENDATIONS

- 1) Additional geological mapping should be conducted over the entire claim block to complete a detailed geological map of the property,
- 2) Detailed structural mapping should be completed proximal to mineralized areas in an attempt to further identify structures and controls relating to the emplacement of mineralization,
- 3) Diamond drilling should target zones along strike and dip of historic mining operations in the area

Dated November 15, 2006

Regan Chernish R. Geol



7.0 LIST OF REFERENCES

Chruch, B.N., 1999, Metallogeny of the Beaton – Camborne Mining Camp Lardeau District (82K 12 &13). Geological Fieldwork 1998

De Veaux, P.J. 1988, Assessment Report on the Lucky Strike Claim Group. Mineral Resources Branch Report 18,232

De Veaux, P.J. 1988, Assessment Report on the Eva – Oyster – Criterion – Lucky Jack Projects.

Emmens, N.W. (1915), Lardeau Mining Division; B.C. Minister of Mines Annual Report 1914, pages K245-K283

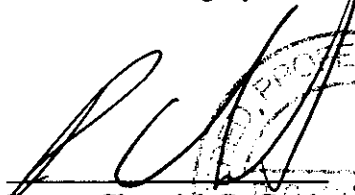
APPENDIX A

CERTIFICATE OF QUALIFICATIONS

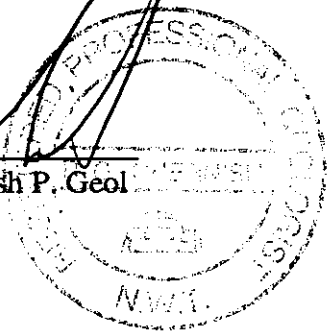
I, Regan G. Chernish of 1411-108 Avenue S.W., Calgary, Alberta, hereby certify that:

1. I am a Professional Geologist with a residence and office at the above address.
2. I graduated from the University of Alberta with a Bachelor of Science Degree in Geology (1991).
3. I am a Registered Professional Geoscientist in good standing with the Association of Professional Engineers, Geologists and Geophysicists of the Northwest Territories (NAPEGG). Registration number 1548.
4. I have worked as a geologist for a total of 15 years since my graduation from university.
5. I am responsible for the preparation of all the sections of this report titled, "Assessment Report on the 2006 Geological Mapping Meridian Claim Group" dated November 15, 2006. The 2006 work described in this report was carried out under my supervision and I visited and conducted fieldwork on the Meridian property from May 17 to May 25, 2006.
6. I am President and a director of Manson Creek Resources Ltd. whose address is Suite 500, 926 – 5th Avenue S.W., Calgary, Alberta, T2P 0N7.

DATED at Calgary, Alberta this 15th day of November, 2006.



Regan Chernish P. Geol



The seal is circular with the text "PROFESSIONAL GEOSCIENTIST" around the top and "N.W.T." at the bottom. In the center, it says "REGAN CHERNISH" and "1548".

APPENDIX B

STATEMENT OF COSTS

Meridian Project – May 2006 Program Costs

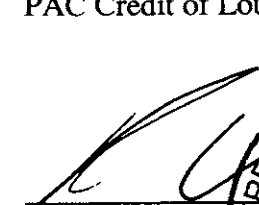

<u>Geologist 1</u>	5 days at \$475/day	\$2,375.00
<u>Geologist 2</u>	5 days at \$450/day	\$2,250.00
<u>Geologist 3</u>	5 days at \$420/day	\$2,125.00
<u>Motels</u>	21 man days @ \$39 per	\$ 819.00
<u>Meals</u>	15 man days @ \$36/per	\$ 540.00
<u>Truck Rental</u>	\$80.00/day @ 7 days	\$ 560.00
<u>Analytical costs</u>	40 multi-element analyses ALS Chemex	\$2,293.18
<u>Sample Shipping</u>		\$ 79.73
<u>Field supplies</u>		\$ 544.40
<u>Fuel</u>	truck and ATV's	\$ 664.88
<u>ATV 1 Rental</u>	5 days @ \$83/day	\$ 415.00
<u>ATV 2 Rental</u>	5 days @ \$100/day	\$ 500.00
	TOTAL	\$13,166.19

The work has been pro rated over the following claims due to the work and traverses covering multiple claims each of the days of the program. The allocation is as follows.

Tenure 391107 – Annette	
TOTAL	\$400.00
Tenure 391108 – Pamela	
TOTAL	\$400.00
Tenure 391109 – Donkey	
TOTAL	\$400.00
Tenure 391110 – Michelle	
TOTAL	\$400.00
Tenure 391161 – Cangeo 1	
TOTAL	\$400.00
Tenure 391162 – Cangeo 2	
TOTAL	\$400.00
Tenure 391163 – Cangeo 3	
TOTAL	\$400.00

Tenure 391181 – Cangeo 4 TOTAL	\$400.00
Tenure 39136 – Lucky Duck TOTAL	\$6400.00
Tenure 391436 – Cangeo 5 TOTAL	\$400.00
Tenure 396593 – Miki TOTAL	\$643.84
Tenure 396594 – Mini TOTAL	\$643.84

A total of \$13,166.19 of assessment work was claimed for this period and of this \$11,287.68 was used for direct assessment work credits. The balance of \$1,878.51 was allocated to the PAC Credit of Louis Arthur Davis.


 Regan Chernish


APPENDIX C
ROCK ANALYSIS

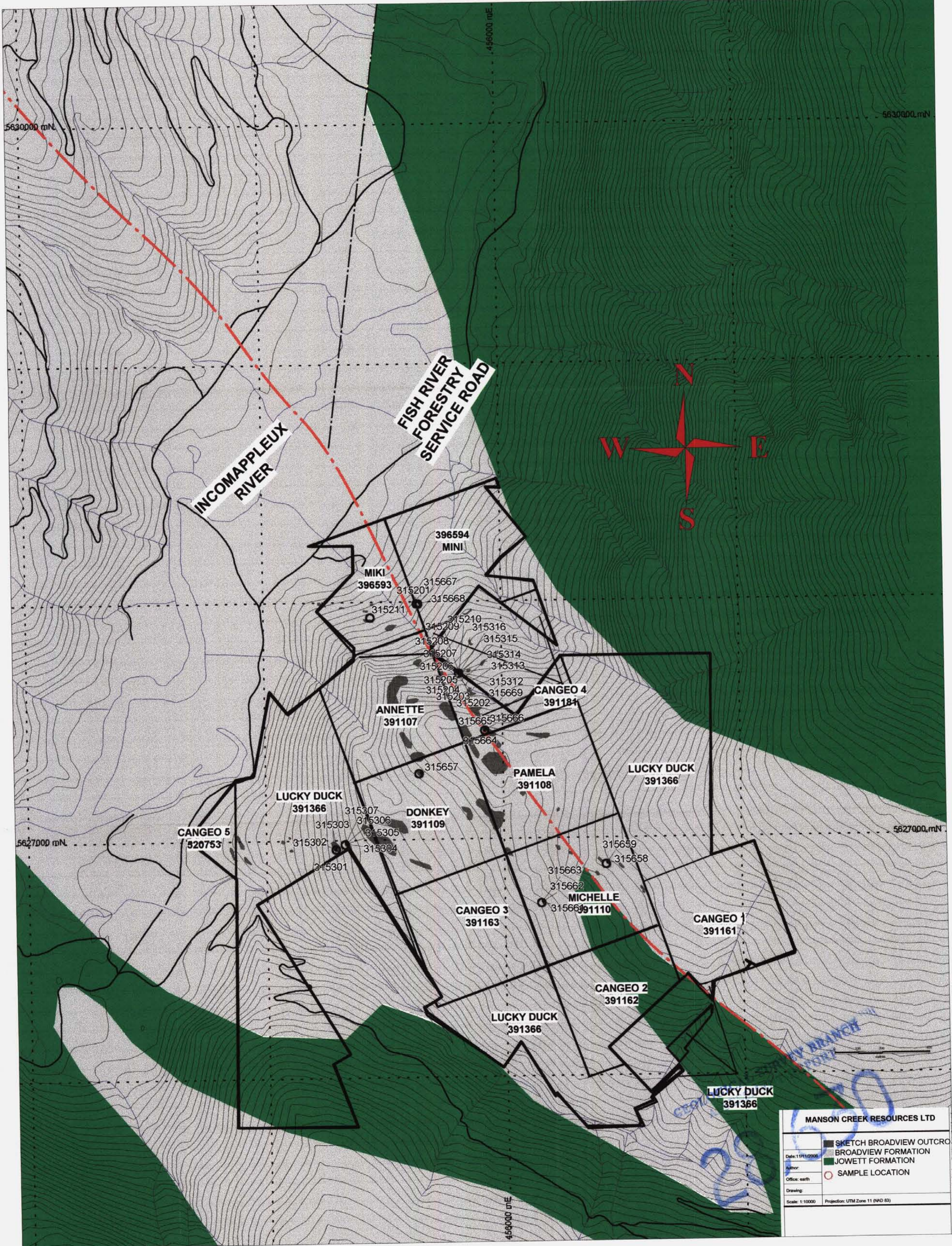
SAMPLE	Au ppm	Au ppm	Ag ppm	Al %	As ppm	B ppm	Ba ppm	Be ppm	Bi ppm	Ca %	Cd ppm	Co ppm	Cr ppm	Cu ppm	Fe %	Ga ppm	Hg ppm	K %	La ppm	Mg %
B315201	<0.005		0.2	0.03	5	<10	10	<0.5	<2	0.02	1.1	2	5	4	3.74	<10	<1	0.01	<10	0.06
B315202	2.25		0.7	0.03	273	<10	<10	<0.5	<2	0.96	<0.5	7	10	17	2.87	<10	<1	0.01	<10	0.29
B315203	0.005		<0.2	<0.01	2	<10	<10	<0.5	<2	0.04	<0.5	<1	9	2	0.25	<10	<1	<0.01	<10	<0.01
B315204	1.105		0.2	0.01	86	<10	<10	<0.5	<2	0.36	<0.5	5	10	3	1.1	<10	<1	<0.01	<10	0.11
B315205	0.05		<0.2	0.03	39	<10	<10	<0.5	<2	0.98	<0.5	6	13	2	0.91	<10	<1	<0.01	<10	0.26
B315206	0.082		<0.2	0.05	25	<10	10	<0.5	<2	1.26	<0.5	2	11	1	1.08	<10	<1	0.02	<10	0.42
B315207	0.342		0.3	0.17	41	<10	30	<0.5	<2	1.73	<0.5	7	6	24	3.15	<10	<1	0.12	10	0.83
B315208	0.028		0.2	0.17	21	<10	30	<0.5	<2	0.49	<0.5	7	5	19	2.73	<10	1	0.12	20	0.45
B315209	0.013		0.3	0.18	27	<10	30	<0.5	<2	0.64	<0.5	9	5	18	2.93	<10	<1	0.12	20	0.54
B315210	0.049		0.3	0.17	33	<10	30	<0.5	<2	1.1	<0.5	9	6	20	3.58	<10	<1	0.12	20	0.8
B315211	7.92		12.2	0.01	88	<10	<10	<0.5	2	0.07	10.9	1	14	924	1.86	<10	<1	0.01	<10	0.02
B315301	<0.005		0.4	0.45	11	<10	30	<0.5	<2	0.44	<0.5	10	8	28	3.22	<10	<1	0.12	20	0.41
B315302	0.006		0.3	0.34	18	<10	30	<0.5	<2	0.22	<0.5	11	7	26	3.2	<10	<1	0.11	20	0.23
B315303	<0.005		<0.2	0.44	18	<10	30	<0.5	<2	0.21	<0.5	10	9	26	3.3	<10	<1	0.12	20	0.21
B315304	0.5		0.4	0.01	7	<10	<10	<0.5	<2	<0.01	<0.5	<1	9	31	0.66	<10	<1	<0.01	<10	0.02
B315305	1.835		0.9	0.05	17	<10	<10	<0.5	<2	0.14	<0.5	3	9	129	1.14	<10	<1	0.02	<10	0.07
B315306	0.189		0.2	0.02	14	<10	<10	<0.5	<2	<0.01	<0.5	1	10	6	1.3	<10	<1	0.01	<10	0.03
B315307	0.021		0.7	0.03	12	<10	<10	<0.5	<2	0.01	0.5	3	8	17	1.46	<10	<1	0.01	<10	0.01
B315312	3.79		2.2	0.25	77	<10	40	<0.5	<2	0.04	0.6	18	8	26	4.37	<10	<1	0.11	30	0.04
B315313	1.265		0.5	0.15	156	<10	20	<0.5	<2	0.11	<0.5	16	6	16	7.13	<10	<1	0.05	<10	0.06
B315314	0.304		0.4	0.21	315	<10	20	<0.5	<2	0.24	<0.5	28	18	24	9.19	<10	<1	0.08	10	0.09
B315315	0.102		0.2	0.29	721	<10	30	<0.5	<2	3.27	<0.5	47	30	15	12.5	<10	<1	0.12	<10	0.98
B315316	0.228		0.3	0.07	257	<10	10	<0.5	<2	0.28	<0.5	13	15	8	4.21	<10	<1	0.03	<10	0.05
B315657	>10.0	11.15	10.6	0.11	62	<10	10	<0.5	<2	0.06	<0.5	2	10	10	1.32	<10	<1	0.03	10	0.01
B315658	0.05		0.2	0.06	<2	<10	10	<0.5	<2	0.01	<0.5	<1	9	8	0.71	<10	<1	0.02	<10	<0.01
B315659	0.013		<0.2	0.03	3	<10	<10	<0.5	<2	<0.01	<0.5	<1	8	4	0.84	<10	<1	0.01	<10	<0.01
B315660	0.023		<0.2	0.25	4	<10	40	<0.5	<2	0.22	<0.5	3	8	15	1.62	<10	<1	0.03	10	0.05
B315662	<0.005		0.2	0.26	4	<10	90	<0.5	<2	0.05	<0.5	6	9	8	2.58	<10	<1	0.07	10	0.07
B315663	<0.005		<0.2	0.16	21	<10	20	<0.5	<2	1.44	<0.5	6	12	17	2.2	<10	<1	0.06	10	0.48
B315664	<0.005		<0.2	0.13	2	<10	30	<0.5	<2	0.02	<0.5	1	8	1	0.73	<10	<1	0.07	10	0.01
B315665	5.88		0.6	0.16	74	<10	30	<0.5	<2	0.04	<0.5	3	8	5	1.38	<10	<1	0.09	10	0.01
B315666	0.437		0.2	0.08	44	<10	20	<0.5	<2	<0.01	<0.5	<1	8	4	0.84	<10	<1	0.06	10	<0.01
B315667	0.005		<0.2	0.02	<2	<10	<10	<0.5	<2	<0.01	<0.5	<1	10	2	0.3	<10	<1	0.01	<10	<0.01
B315668	<0.005		<0.2	0.02	<2	<10	<10	<0.5	<2	<0.01	<0.5	<1	10	1	0.51	<10	<1	0.01	<10	<0.01
B315669	<0.005		<0.2	0.11	6	<10	10	<0.5	<2	1.36	<0.5	3	12	4	1.26	<10	<1	0.07	10	0.43
B315673	1.145		3.3	<0.01	126	<10	<10	<0.5	<2	0.04	349	7	7	126	2.56	<10	7	<0.01	<10	0.03
B315674	0.022		62.8	0.39	874	<10	20	<0.5	<2	1.44	65.9	84	39	726	2.43	<10	1	0.18	<10	1
B315675	0.092		42.6	0.13	76	<10	30	<0.5	<2	1.01	27.9	5	8	158	1.59	<10	1	0.11	10	0.35
B315676	>10.0	14.15	23.1	0.06	1910	<10	10	<0.5	2	0.01	1.7	8	<1	124	29	<10	<1	0.05	<10	0.01
B315677	4.52		>100	0.05	1100	<10	10	<0.5	2	0.03	272	6	1	1195	18.4	<10	6	0.04	<10	0.01

SAMPLE	Mn ppm	Mo ppm	Na %	Ni ppm	P ppm	Pb ppm	S %	Sb ppm	Sc ppm	Sr ppm	Ti %	Tl ppm	U ppm	V ppm	W ppm	Zn ppm	Ag ppm	Pb %	Zn %
B315201	496 <1		0.01	18	70	32	0.02 <2		2	4 <0.01	<10	<10		1 <10		190			
B315202	184 <1		0.02	38	320	29	2.32 <2		1	76 <0.01	<10	<10		1 <10		89			
B315203	22 <1		<0.01	2	20	3	0.01 <2		<1	2 <0.01	<10	<10	<1	<10		16			
B315204	80 <1		0.01	17	140	7	0.68 <2		1	31 <0.01	<10	<10		1 <10		18			
B315205	182 <1		0.02	23	280	2	0.16 <2		2	65 <0.01	<10	<10		2 <10		12			
B315206	208 <1		0.02	13	230	3	0.22 <2		2	89 <0.01	<10	<10		2 <10		9			
B315207	410	1	0.01	17	350	27	0.43 <2		2	149 <0.01	<10	<10		2 <10		65			
B315208	295	1	0.01	16	300	11	0.2 <2		1	35 <0.01	<10	<10		1 <10		38			
B315209	272	1	0.01	21	380	11	0.26 <2		1	50 <0.01	<10	<10		2 <10		31			
B315210	369	1	0.02	21	360	34	0.24 <2		2	100 <0.01	<10	<10		3 <10		209			
B315211	37 <1		0.01	5	80	1700	1.34 <2		<1	6 <0.01	<10	<10		1 <10		4250			
B315301	472 <1		0.02	31	390	11	0.01 <2		2	28 <0.01	<10	<10		4 <10		61			
B315302	431 <1		0.02	29	380	16	0.01 <2		1	17 <0.01	<10	<10		3 <10		83			
B315303	436 <1		0.02	28	390	9	0.01 <2		2	19 <0.01	<10	<10		4 <10		59			
B315304	43 <1		0.01	3	10	5	0.08 <2		<1	<0.01	<10	<10		1 <10		17			
B315305	78 <1		0.01	10	60	48	0.39 <2		1	14 <0.01	<10	<10		1 <10		126			
B315306	85 <1		0.01	7	10	7	0.16 <2		1	1 <0.01	<10	<10		1 <10		9			
B315307	253 <1		0.01	9	50	294	0.03 <2		1	1 <0.01	<10	<10		1 <10		98			
B315312	567	1	0.02	48	410	192	0.11 <2		2	13 <0.01	<10	<10		2 <10		156			
B315313	848	1	0.02	47	540	23	0.75 <2		4	14 <0.01	<10	<10		9 <10		62			
B315314	1145	1	0.01	109	1220	15	0.28 <2		8	23 <0.01	<10	<10		13 <10		65			
B315315	1505 <1		0.02	226	2090	15	0.21 <2		11	207 <0.01	<10	<10		19 <10		102			
B315316	474 <1		0.01	67	350	32	0.13 <2		4	14 <0.01	<10	<10		6 <10		30			
B315657	86	1	0.05	7	50	19	0.19 <2		1	3 <0.01	<10	<10		1 <10		36			
B315658	31	1	0.01	3	50	15	0.01 <2		<1	1 <0.01	<10	<10		1 <10		5			
B315659	33	1	0.01	3	60	9	0.01 <2		<1	<0.01	<10	<10		1 <10		4			
B315660	537	1	0.07	9	1060	6	0.01 <2		2	23 <0.01	<10	<10		4 <10		28			
B315662	1930	2	0.05	15	180	38	0.01 <2		2	5 <0.01	<10	<10		15 <10		30			
B315663	538 <1		0.05	14	320	22	0.01 <2		2	80 <0.01	<10	<10		4 <10		29			
B315664	354 <1		0.03	3	140 <2		0.01 <2		1	2 <0.01	<10	<10		2 <10		5			
B315665	104 <1		0.02	9	160	10	0.24 <2		1	5 <0.01	<10	<10		3 <10		6			
B315666	31 <1		0.01	4	50	4	0.08 <2		<1	2 <0.01	<10	<10		2 <10		3			
B315667	24 <1		<0.01	3	10 <2		0.01 <2		<1	<0.01	<10	<10		<1	<10		2		
B315668	49 <1		0.01	3	10 <2		<0.01 <2		<1	<0.01	<10	<10		1 <10		3			
B315669	415 <1		0.01	9	420	12	0.1 <2		1	81 <0.01	<10	<10		1 <10		40			
B315673	38 <1		0.01	10	10	138	4.1		2 <1	2 <0.01	<10	<10	<1	<10		>10000			5.34
B315674	640 <1		0.01	403	920	9570	1.69		60	53 <0.01	<10	<10		10 <10		>10000			1
B315675	443 <1		0.02	9	170	9580	0.98		29	56 <0.01	<10	<10		1 <10		5400			
B315676	12 <1		0.01	24	10	1735	>10.0		4 <1	5 <0.01	<10	<10		1 <10		230			
B315677	17 <1		0.02	25	70	>10000	>10.0		100 <1	6 <0.01	<10	<10	<1	<10		>10000	139	9.35	5.43

APPENDIX D

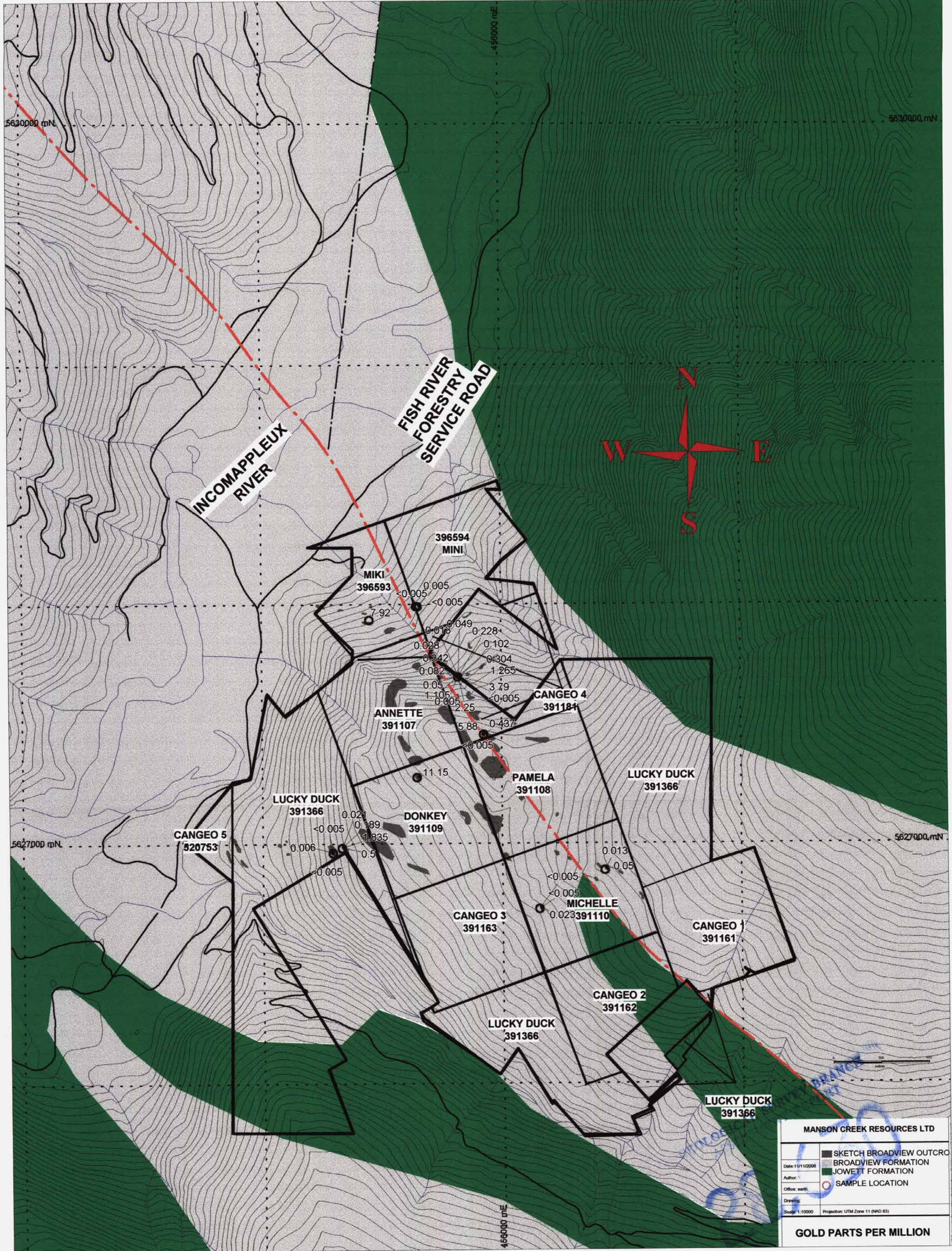
ROCK ASSAY PLOTS

SAMPLE LOCATION
GOLD ASSAY (ppm)
SILVER ASSAY (ppm)



MANSON CREEK RESOURCES LTD	
<ul style="list-style-type: none"> SKETCH BROADVIEW OUTCROPPING BROADVIEW FORMATION JOWETT FORMATION SAMPLE LOCATION 	<p>Date: 11/11/2008</p> <p>Author:</p> <p>Office: earth</p> <p>Drawing:</p> <p>Scale: 1:10000 Projection: UTM Zone 11 (NAD 83)</p>

25



MANSON CREEK RESOURCES LTD	
<ul style="list-style-type: none"> SKETCH BROADVIEW OUTCRO BROADVIEW FORMATION JOWETT FORMATION SAMPLE LOCATION 	<p>Date: 1/11/2006</p> <p>Author:</p> <p>Office: earth</p> <p>Drawing:</p> <p>Scale: 1:10000 Projection: UTM Zone 11 (NAD 83)</p>
GOLD PARTS PER MILLION	

