

Report on a Geological prospecting and Geochemical ^{soil} ~~Stream Silt~~ Survey

TULAMEEN AREA PROPERTY



RED BIRD CLAIMS
SIMILKAMEEN MINING DIVISION

N.T.S. M092H 10W

Northing 5494000 m Easting 658000 m
Longitude 120° 48' 48" W Latitude 49° 34' 05" N

OWNER

Henley Ventures Inc.
300 - 1100 Melville Ave.
Vancouver B.C.
V6C 1J8

Work Performed from Performed from October 1, 2005 through July 21, 2006

Report By: L. Stephenson

Submitted: May, 2006

GEOLOGICAL SURVEY BRANCH
ASSESSMENT REPORT

28,638

TABLE OF CONTENTS

	Page
1.00 Introduction	1
2.00 Location, Access and Description	1
3.00 History and Geology	1
4.00 Work Program	2
4.10 Geochemical Stream Silt Survey	2
5.00 Conclusions	2
Exhibit "A" - Statement of Expenditure	9
Affidavit	10
Author's Qualifications	11
<u>MAPS</u>	
Map 1 - Location Map	3
Map 2 - Geological Traverses Interpretation and Silt Sample Locations	4
Map 3a - Geochemical Soils Copper Results	5
Map 3b - Geochemical Soils Zinc Results	6
Map 3a - Geochemical Soils Lead Results	7
Map 3a - Geochemical Soils Gold Results	8
<u>APPENDICES</u>	
1 - Assays	

Soil
Report on a Geological Mapping and Geochemical ~~Stream Silt~~ Survey

**TULAMEEN AREA PROPERTY
RED BIRD CLAIMS
SIMILKAMEEN MINING DIVISION**

L. Stephenson

May 2006

1.00 Introduction

The RED BIRD Claims were staked in 2004 (Tenures # 412526 -531) and converted to tenure # 519812, to cover mineralization associated with the volcanic assemblages of Nicola Volcanics. The exploration work on the claims was recorded as SOW ~~4071489~~ *4093227*

The region has an active mining area for precious and base metals since the discovery of the Copper Mountain area mines in the early 20th century to the south east and the 1930's discovery of gold in quartz veins to the south west of the property.

Geological prospecting and geochemical stream silt and soilsampling surveys were undertaken to establish and evaluate the trend of the volcanic rocks related to the known showings of the area. A two kilometre road traverse collecting 75 soil samples, 5 stream silt samples and 6 rock samples was conducted over the claims.

2.00 Location, Access and Description

The claim is located 3 kilometres northwest of Tulameen, British Columbia. Access is provided to the claims 6 kilometres up the Lawless Creek logging road off the main Tulameen road (Map 2).

The property consists of 5 2 post claims and one 4 post claim converted to grid units claims under the new BC mineral tenure regulations. With fairly rugged topography and relief extending from 400 metres to 1200 metres in elevation, the forested slopes are actively being logged with some areas of re-growth typical of this area British Columbia.

3.0 History and Geology

Gold was discovered in the area in the late part of the 19th century in placer deposits along the Tulameen River. Initial exploration occurred in the early 20th century around the copper showings of Boulder mountain and later around Rabbit Mountain which included the namesake Redbird showings. Several additional periods of exploration have located several showings around the Redbird claim have been developed by trenching and adits.

During the 1980's the area's copper Mine was developed.

This area is part of the Nicola Volcanic belt of the central Cordillera of volcanics, crystalline rocks and minor sediments of the interior B.C. geological province. The andesite-dacite volcanics are pervasively altered to calcareous and silicified zones that are mylonitic sheared in an almost north south direction. Mineralization in intense silicified and pyritized layers is associated with these structural zones. Pyrite associated with Cretaceous intrusives is located within the main body and the emanating dykes with significant associated hornfels alteration suggesting a metasomatic emplacement of the mineralization.

Most if not all the mineralization is associated with the Nicola volcanics which hosts all the known copper showings

4.00 Work Program

Geological prospecting and geochemical soil and silt sampling was conducted through out the property

Soil sampling traverses were conducted along the road that cross the property, highlighted on Map 2. Seventy Five soil samples and 5 stream silt samples were taken from the claim group along the roads that cross the property in an east west direction. They were assayed for 30 elements ICP and ICP and fire assay for gold, by Chemex Labs and the results are appended (Appendix I) and sample locations are plotted on Map 3.

Six rock samples, from the area (Map 2) were assayed and the analysis is attached as Appendix I.

The work amounts of time and sampling are reported in table form as part of Exhibit "A".

4.10 Geochemical Soil Survey

A total number of 75 soil samples were collected from the claims. Five drainages were sampled and locations recorded and marked. Field crew would drive along the road and stop the vehicle on the road at the drainage and then walk to the upside of the road area of the drainage to collect their sample. They would dig in the active or inactive stream bed to obtain enough stream silt or drainage soil would be taken to obtain sufficient sample for analysis. This usually was at least half a standard brown Kraft paper geochem bag full or more.

Samples were dried and sent to Chemex Labs. for preparation. Chemex would further dry the sample and then sieve it to -80 mesh. A 50 gram sample was then leached with 3 millilitres of 2-2-2 HCL-HNO₃-H₂O at 95° Celsius for one hour, diluted to 10 millilitres and analysed by ICP-ES.

Results are appended and plotted on Map 3 and show an area of interesting soil anomalies outlining the known adits and the potential continuation of the zones.

5.00 Conclusions

The RED BIRD Claims are underlain by volcanics which are associated with mineralization. The samples taken during this program have established that mineralization is present on the claims.

More detailed surveying, including geophysical surveying would better delineate the anomalous zones and the main showing area is recommended to guide future exploration and develop exploration drilling targets effectively.

Further exploration is required to further evaluate these claims.


LAURENCE STEPHENSON, B.Sc., M.B.A.
P.Eng.

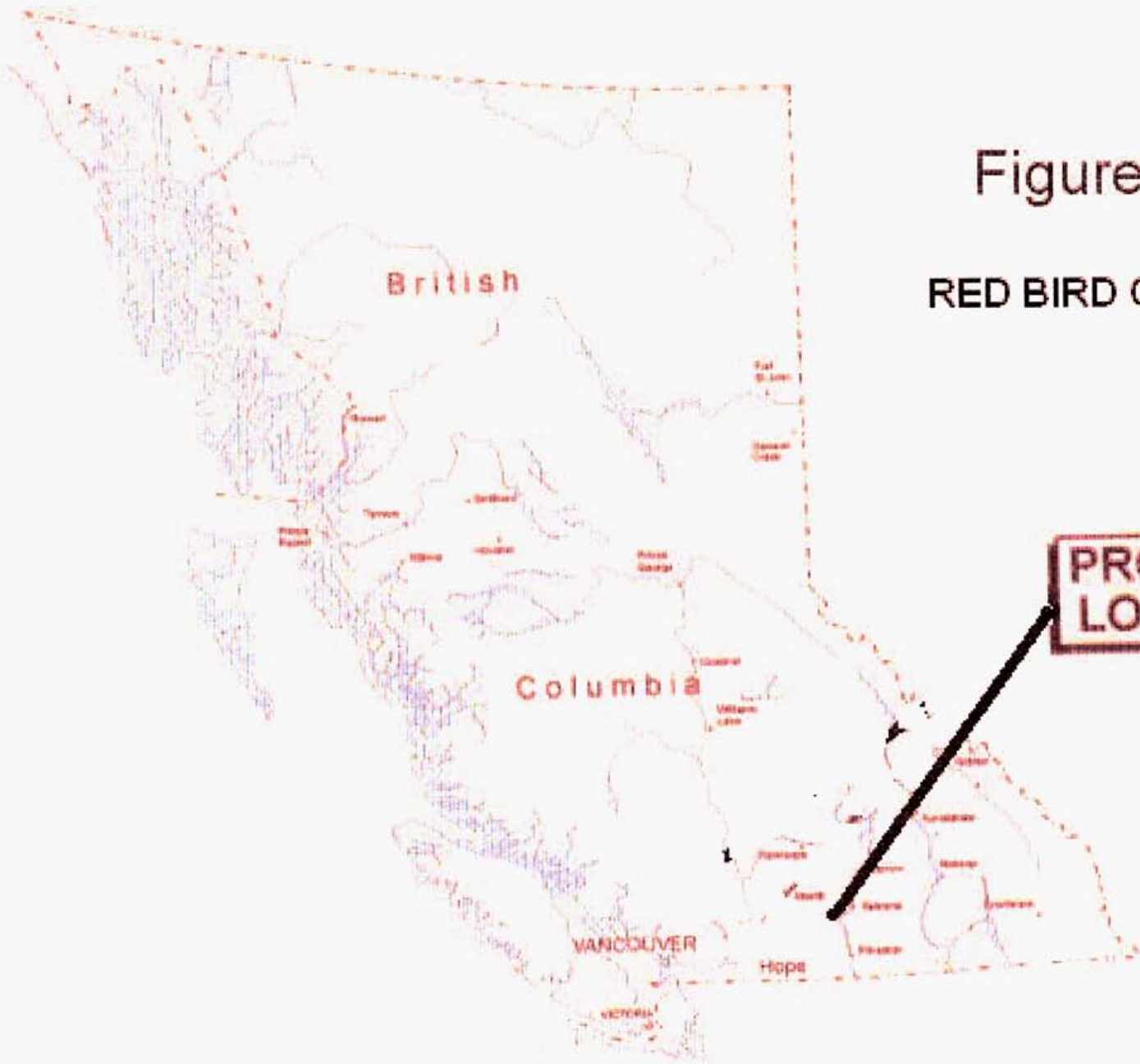


Figure 1

RED BIRD CLAIMS

PROPERTY
LOCATION

LEGEND

- X - Rock Sample
- Au, Ag, Cu, Zn, As
all ppm
- Contour Line

Metres



Red Bird Property (Area Outline)

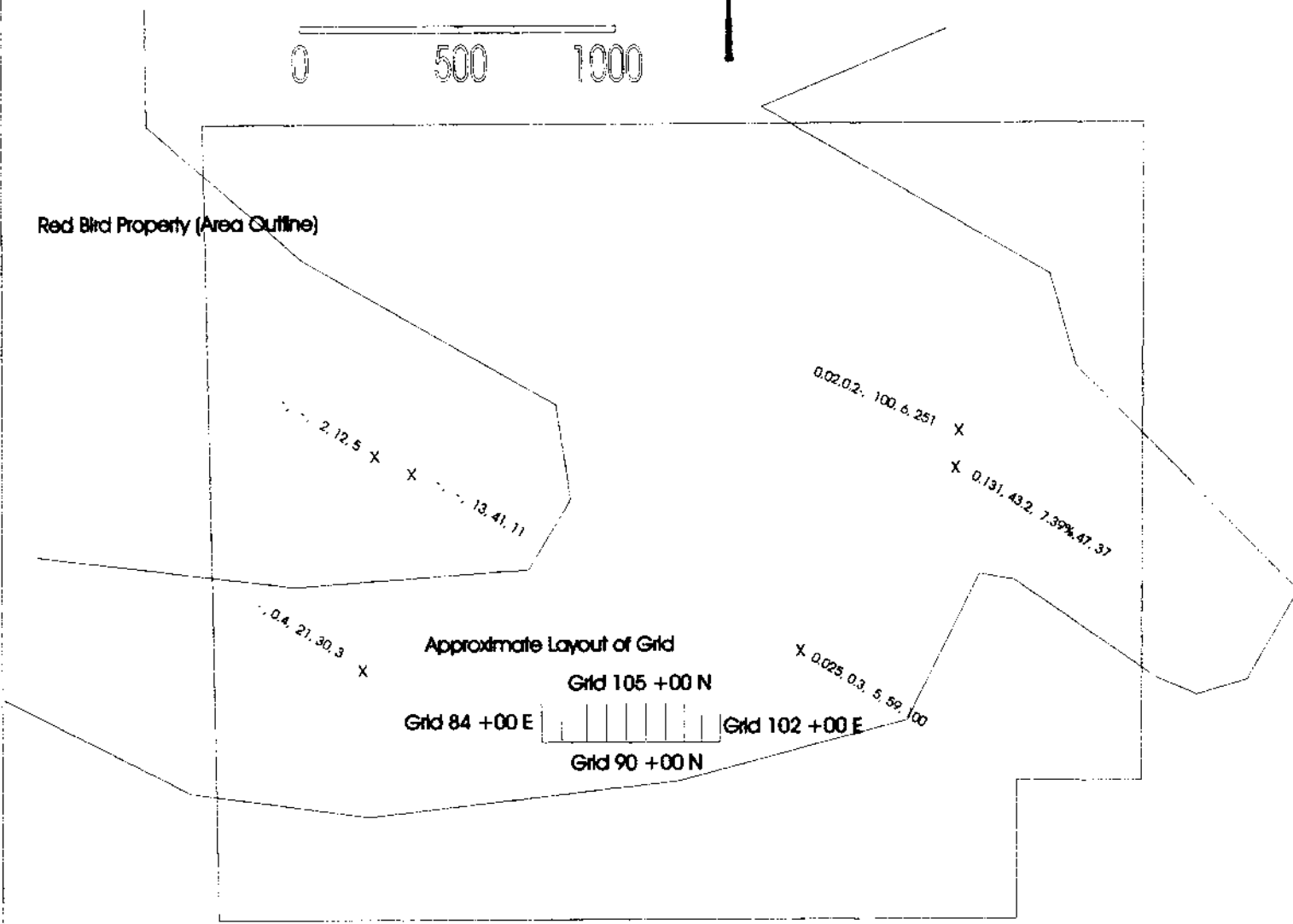


Figure 2

GEOFIN INC.

Red Bird Property
Assessment Report 2006

Rock Sample and
Soil Sample Grid Locations

	102E-90N	100E-90N	98E-90N	96E-90N	94E-90N	92E-90N	90E-90N	88E-90N	86E-90N	84E-90N
102E-90N	19	29	21	18	7	18	21	16	17	20
102E-91N	16	25	15	20	18	23	21	23	14	18
102E-92N	18	19	20	21	19	28	30	19	23	37
102E-93N	19	27	16	23	20	18	16	22	26	14
102E-94N	24	22	16	22	24	16	16	21	15	29
102E-95N	20	22	18	21	20	16	20	23	28	18
102E-96N	21	22	18	19	17	15	16	43	22	28
102E-97N	17	23	20	24	12	18	22	30	21	14
102E-98N	17	20	19	18	19	18	16	26	19	20
102E-99N	21	25	18	22	16	17	22	26	27	24
102E-100N	20	19	21	21	16	17	25	19	18	24
98E-101N			20	24	18	22	16	12	30	31
98E-102N			16	14	16	24	20	26	18	36
98E-103N			15	18	25	23	21	23	27	27
98E-104N			22	17	23	20	19	21	20	17
98E-105N			17	19	26	17	26	17	23	16

Values in PPM



Red Bird Claims Soil GeoChem Survey Copper Figure 3a Scale: not to scale	
November 2008	L. Stephenson

	102E-90N	100E-90N	98E-90N	96E-90N	94E-90N	92E-90N	90E-90N	88E-90N	86E-90N	84E-90N
102E-90N	67	82	65	65	38	72	67	59	57	69
102E-91N	56	73	66	77	63	84	57	53	47	85
102E-92N	66	72	77	71	74	66	58	50	55	75
102E-93N	74	79	69	70	78	54	48	58	60	67
102E-94N	77	81	59	77	68	48	47	56	43	71
102E-95N	69	76	69	72	58	52	43	52	56	68
102E-96N	75	73	80	60	53	46	45	58	49	73
102E-97N	58	66	79	63	41	53	45	60	60	49
102E-98N	62	65	67	57	49	50	43	55	50	58
102E-99N	74	63	62	56	49	46	64	82	58	75
102E-100N	66	59	62	71	53	53	59	50	50	53
98E-101N			56	62	64	70	51	27	49	68
98E-102N			58	44	55	81	52	50	39	96
98E-103N			54	58	60	62	57	50	52	68
98E-104N			68	62	68	61	56	55	56	53
98E-105N			69	64	72	54	58	53	45	46

Values in PPM



Red Bird Claims Soil GeoChem Survey Zinc Figure 3b Scale: not to scale	
November 2006	L. Stephenson

	102E-90N	100E-90N	98E-90N	96E-90N	94E-90N	92E-90N	90E-90N	88E-90N	86E-90N	84E-90N
102E-90N	30	34	36	41	14	26	19	21	14	31
102E-91N	19	26	22	28	26	28	15	17	15	23
102E-92N	21	22	25	26	26	24	23	17	21	24
102E-93N	23	27	22	28	29	19	18	19	19	13
102E-94N	22	26	24	21	26	17	15	17	16	24
102E-95N	21	22	23	26	22	16	17	21	22	20
102E-96N	23	20	22	22	18	14	16	24	14	27
102E-97N	20	26	23	23	13	24	16	28	19	15
102E-98N	19	22	19	17	22	18	13	21	20	21
102E-99N	20	16	16	19	15	18	19	24	27	46
102E-100N	19	14	18	15	14	17	28	15	19	40
98E-101N			17	20	18	22	23	9	21	38
98E-102N			14	13	18	21	16	22	12	50
98E-103N			14	19	21	21	16	15	18	37
98E-104N			18	16	21	14	12	15	17	18
98E-105N			17	17	23	12	17	12	11	13

Values in PPM



Red Bird Claims Soil GeoChem Survey Lead Figure 3c Scale: not to scale	
November 2006	L. Stephenson

84E-105N	<0.005	<0.005	<0.005	0.005	0.005	<0.005	<0.005	<0.005		
84E-104N	<0.005	<0.005	0.005	<0.005	0.005	<0.005	<0.005	0.005		
84E-103N	0.005	<0.005	0.005	0.006	<0.005	<0.005	<0.005	0.006		
84E-102N	0.006	<0.005	0.005	<0.005	0.005	<0.005	<0.005	<0.005		
84E-101N	0.006	0.005	<0.005	<0.005	<0.005	<0.005	<0.005	<0.005		
84E-100N	0.006	<0.005	<0.005	0.007	<0.005	<0.005	<0.005	0.005	<0.005	<0.005
84E-99N	<0.005	0.006	0.005	0.005	<0.005	<0.005	0.005	<0.005	<0.005	<0.005
84E-98N	<0.005	<0.005	0.006	0.005	0.007	<0.005	<0.005	<0.005	<0.005	<0.005
84E-97N	<0.005	<0.005	0.005	<0.005	<0.005	<0.005	<0.005	<0.005	<0.005	<0.005
84E-96N	0.005	<0.005	0.006	<0.005	<0.005	<0.005	<0.005	<0.005	<0.005	<0.005
84E-95N	0.005	<0.005	<0.005	0.006	<0.005	<0.005	<0.005	<0.005	<0.005	<0.005
84E-94N	0.005	<0.005	0.007	0.005	0.005	<0.005	<0.005	<0.005	<0.005	<0.005
84E-93N	0.034	<0.005	0.005	0.006	<0.005	<0.005	<0.005	<0.005	0.005	<0.005
84E-92N	0.006	<0.005	<0.005	0.006	0.007	<0.005	<0.005	<0.005	<0.005	<0.005
84E-91N	<0.005	<0.005	<0.005	0.005	<0.005	<0.005	<0.005	<0.005	0.005	<0.005
84E-90N	<0.005	<0.005	<0.005	<0.005	<0.005	<0.005	<0.005	<0.005	<0.005	<0.005
	84E-90N	86E-90N	88E-90N	90E-90N	92E-90N	94E-90N	96E-90N	98E-90N	100E-90N	102E-90N

Values in PPM



Red Bird Claims Soil GeoChem Survey Gold Figure 3d	
Scale: not to scale	
November 2006	L. Stephenson

EXHIBIT "A"

STATEMENT OF EXPENDITURES

**on a Geochemical Soil and Geological Prospecting Survey
TULAMEEN AREA PROPERTY
RED BIRD CLAIMS
SIMILKAMEEN MINING DIVISION
N.T.S.092H/ 10W**

Covering the period from October 1, 2005 through July 21, 2006

SALARIES:

L. Stephenson - Geologist, P. Eng. Report writing, Compilation of data & Map Preparation	- 1days @ \$500/Day
Rick Simpson Field Worker -soil sampling prospecting	- 3 days @ \$300/day
Pat washpan Field Hand	- 4 days @ \$250/day
Total Salaries	\$ 2,400

TRANSPORTATION:

1 - 4x4 Pickup; 4 days @ \$100/day	\$ 400
Fuel, \$60/day	\$ 240
Food and supplies maps etal	\$ 450

ASSAYS	\$ 900
---------------	---------------

TOTAL = \$ 4,340


**LAURENCE STEPHENSON, B.Sc., M.B.A.
P.Eng.**

IN THE MATTER OF THE
B.C. MINERAL ACT
AND
IN THE MATTER OF A GEOCHEMICAL SOIL AND GEOLOGICAL PROSPECTING SURVEY PROGRAM

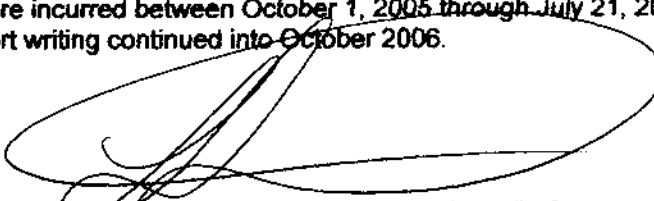
CARRIED OUT ON THE RED BIRD CLAIMS

TULAMEEN AREA PROPERTY
in the SIMILKAMEEN MINING DIVISION
of the province of British Columbia
More Particularly N.T.S. N.T.S.092H/10W

AFFIDAVIT

I, L. Stephenson, of the City of Surrey, in the Province of British Columbia, make an oath and say:

1. That I am employed as a geologist by GeoFin Inc. and as such have a personal knowledge of the facts to which I hereinafter depose:
2. That annexed hereto and marked as Exhibit "A" to this my Affidavit is a true copy of expenditures incurred on a Geological Mapping and Geochemical Silt Sampling program, on the RED BIRD mineral claims;
3. That the said expenditures were incurred between October 1, 2005 through July 21, 2006 for the purpose of mineral exploration. Report writing continued into October 2006.

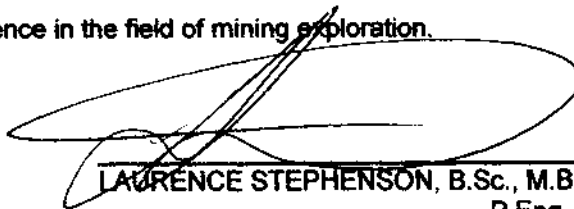


LAURENCE STEPHENSON, B.Sc., M.B.A.
P.Eng.

AUTHOR'S QUALIFICATIONS

I, Laurence Stephenson, of the City of Surrey, in the Province of British Columbia, do hereby certify that:

1. I graduated from Carleton University in 1975 with a Bachelor of Science degree in Geology then, in 1985, graduated from York University with a Masters of Business Administration;
2. I am registered as a Professional Engineer for the Province of Ontario (1981);
3. I have had over 33 years experience in the field of mining exploration.



LAURENCE STEPHENSON, B.Sc., M.B.A.
P.Eng.

APPENDIX 1 – ASSAYS

818047794 - Finalize
 CLIENT : MOFLAC - Washoe Power Ltd
 # of SAMPLES : 8
 DATE RECEIVED : 2008-05-30 DATE FINALIZED : 2008-08-21
 PRODUCT : FIBED BIRD
 CERTIFICATE COMMENTS : -
 PO NUMBER : -

ANALYTE	UNIT	CONC	STDEV	UPPER LIMIT	LOWER LIMIT	REMARKS	CONC	STDEV	UPPER LIMIT	LOWER LIMIT	REMARKS	CONC	STDEV	UPPER LIMIT	LOWER LIMIT	REMARKS	CONC	STDEV	UPPER LIMIT	LOWER LIMIT	REMARKS
AC	ug/g	0.24	0.028	0.4	0.2		0.24	0.028	0.4	0.2		0.24	0.028	0.4	0.2		0.24	0.028	0.4	0.2	
PC	ug/g	0.24	0.121	0.4	0.2		0.24	0.121	0.4	0.2		0.24	0.121	0.4	0.2		0.24	0.121	0.4	0.2	
DC	ug/g	0.54	0.084	0.4	0.19		0.54	0.084	0.4	0.19		0.54	0.084	0.4	0.19		0.54	0.084	0.4	0.19	
TC	ug/g	1.6	0.058	0.2	0.2		1.6	0.058	0.2	0.2		1.6	0.058	0.2	0.2		1.6	0.058	0.2	0.2	
CC	ug/g	0.24	0.028	0.4	0.2		0.24	0.028	0.4	0.2		0.24	0.028	0.4	0.2		0.24	0.028	0.4	0.2	
DC	ug/g	0.24	0.028	0.4	0.2		0.24	0.028	0.4	0.2		0.24	0.028	0.4	0.2		0.24	0.028	0.4	0.2	
PC	ug/g	0.24	0.028	0.4	0.2		0.24	0.028	0.4	0.2		0.24	0.028	0.4	0.2		0.24	0.028	0.4	0.2	
TC	ug/g	0.24	0.028	0.4	0.2		0.24	0.028	0.4	0.2		0.24	0.028	0.4	0.2		0.24	0.028	0.4	0.2	

	102E-90N	100E-90N	98E-90N	96E-90N	94E-90N	92E-90N	90E-90N	88E-90N	86E-90N	84E-90N
102E-90N	19	29	21	18	7	18	21	18	17	20
102E-91N	18	25	15	20	16	23	21	23	14	19
102E-92N	19	19	20	21	19	28	30	19	23	27
102E-93N	19	27	16	23	20	19	16	22	26	14
102E-94N	24	32	18	22	24	16	16	21	15	20
102E-95N	20	22	18	21	20	18	20	23	26	18
102E-96N	21	22	18	19	17	15	16	43	22	28
102E-97N	17	23	20	24	12	18	22	30	21	14
102E-98N	17	20	19	18	19	15	16	26	19	20
102E-99N	21	25	18	22	16	17	22	26	27	24
102E-100N	20	19	21	21	16	17	25	19	16	24
98E-101N			20	24	18	22	16	12	30	31
98E-102N			18	14	16	24	20	26	16	26
98E-103N			15	16	25	23	21	23	27	27
98E-104N			22	17	23	20	19	21	20	17
98E-105N			17	19	26	17	26	17	23	15

Values in PPM



Red Bird Claims
Soil GeoChem Survey Copper
Figure 3a
Scale: not to scale
November 2008
L. Stephenson

