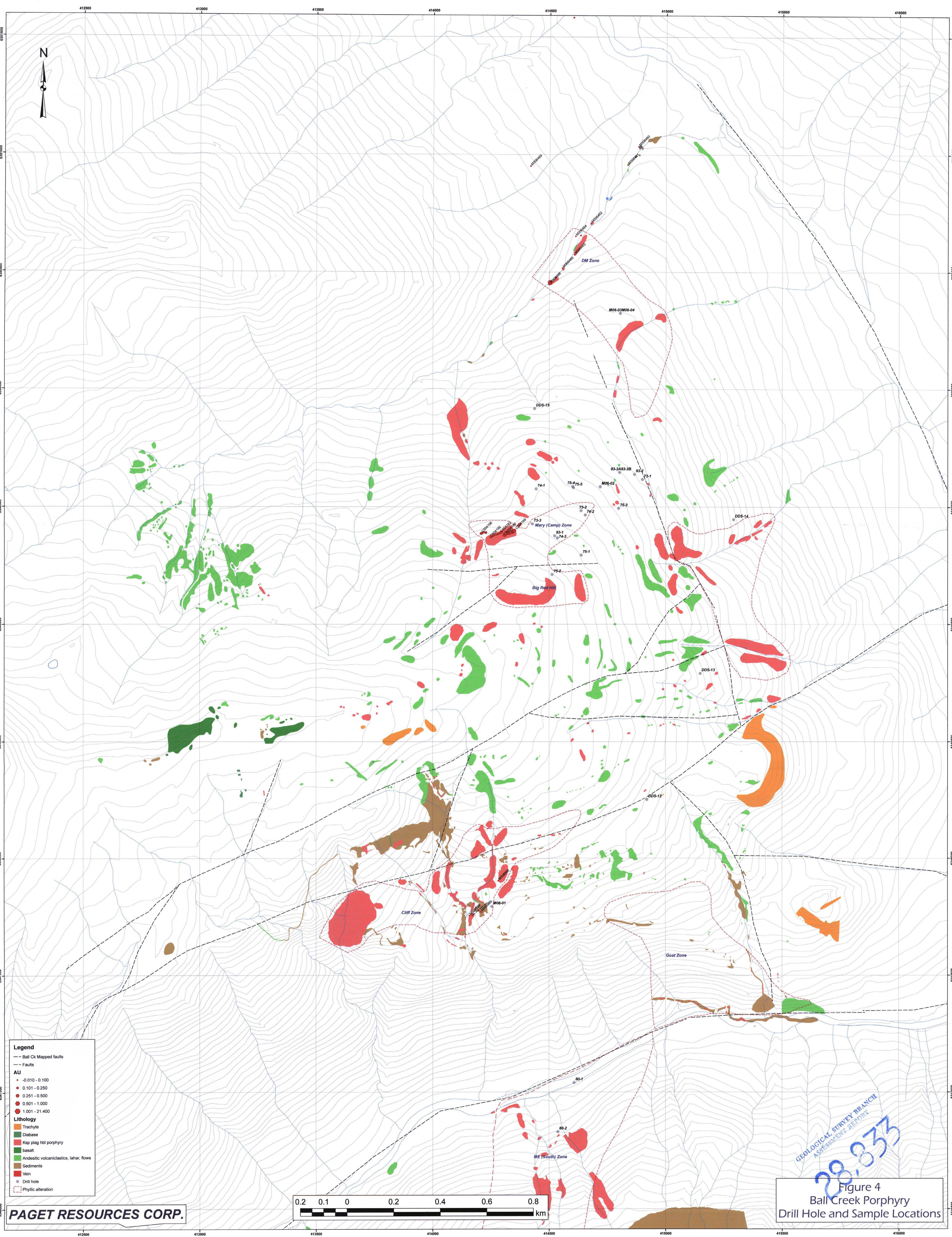


Vol. 3

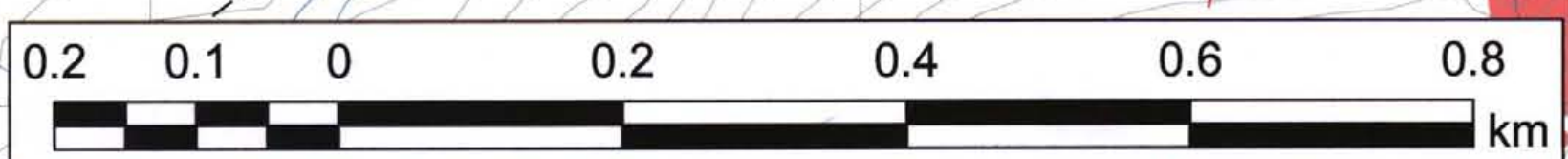
28833



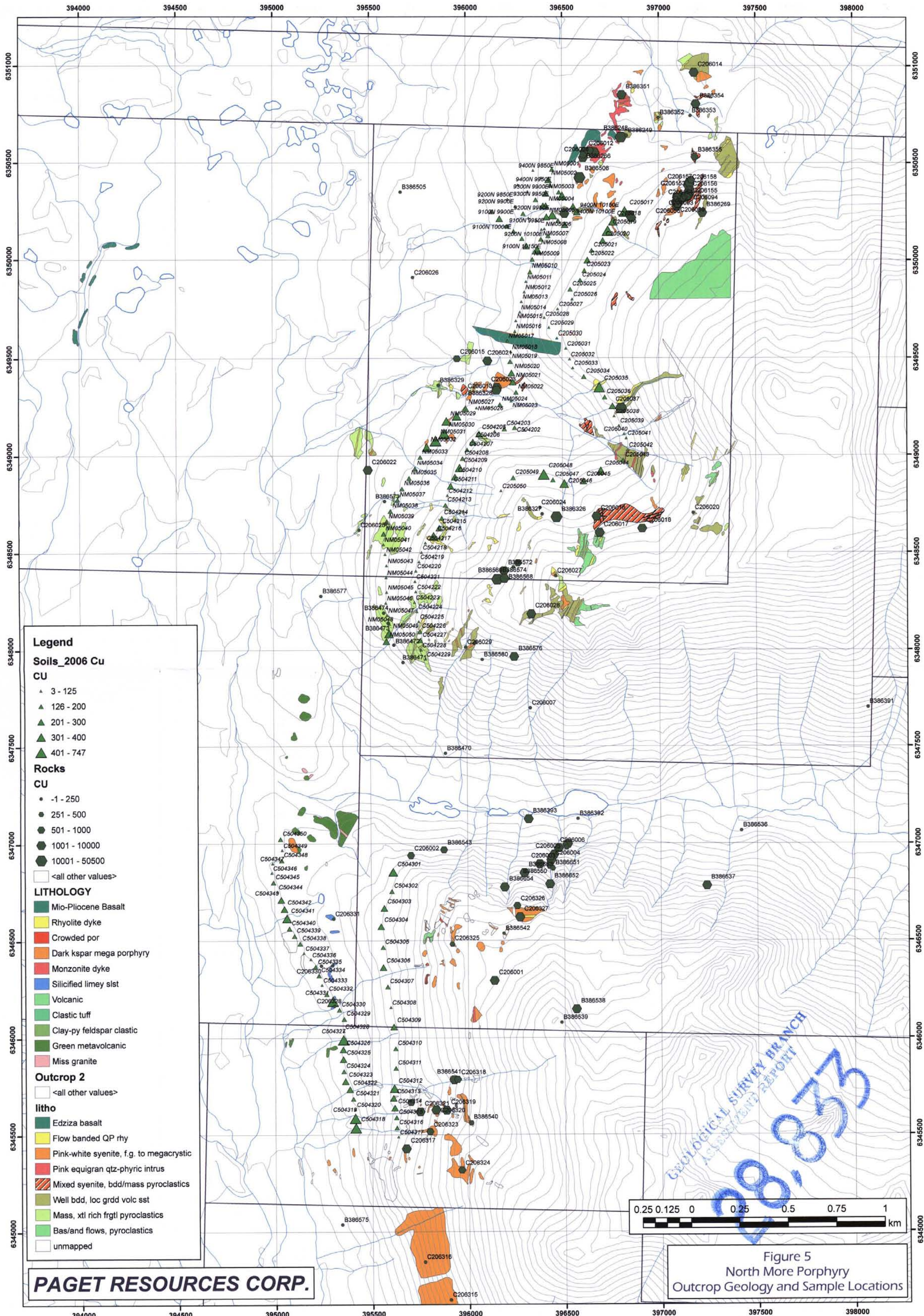
Legend

- Ball Ck Mapped faults
- - - Faults
- AU**
- -0.010 - 0.100
- 0.101 - 0.250
- 0.251 - 0.500
- 0.501 - 1.000
- 1.001 - 21.400
- Lithology**
- Trachyte
- Diabase
- Ksp plag hbl porphyry
- basalt
- Andesitic volcanoclastics, lahar, flows
- Sediments
- Vein
- Drill hole
- Phylitic alteration

PAGET RESOURCES CORP.



GEOLOGICAL SURVEY BRANCH
 ASSESSMENT REPORT
 20-0373
Figure 4
 Ball Creek Porphyry
 Drill Hole and Sample Locations



GEOLOGICAL SURVEY BRANCH
SCIENTIFIC REPORT

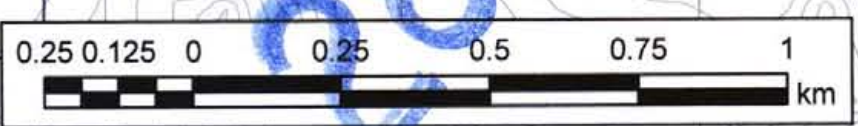
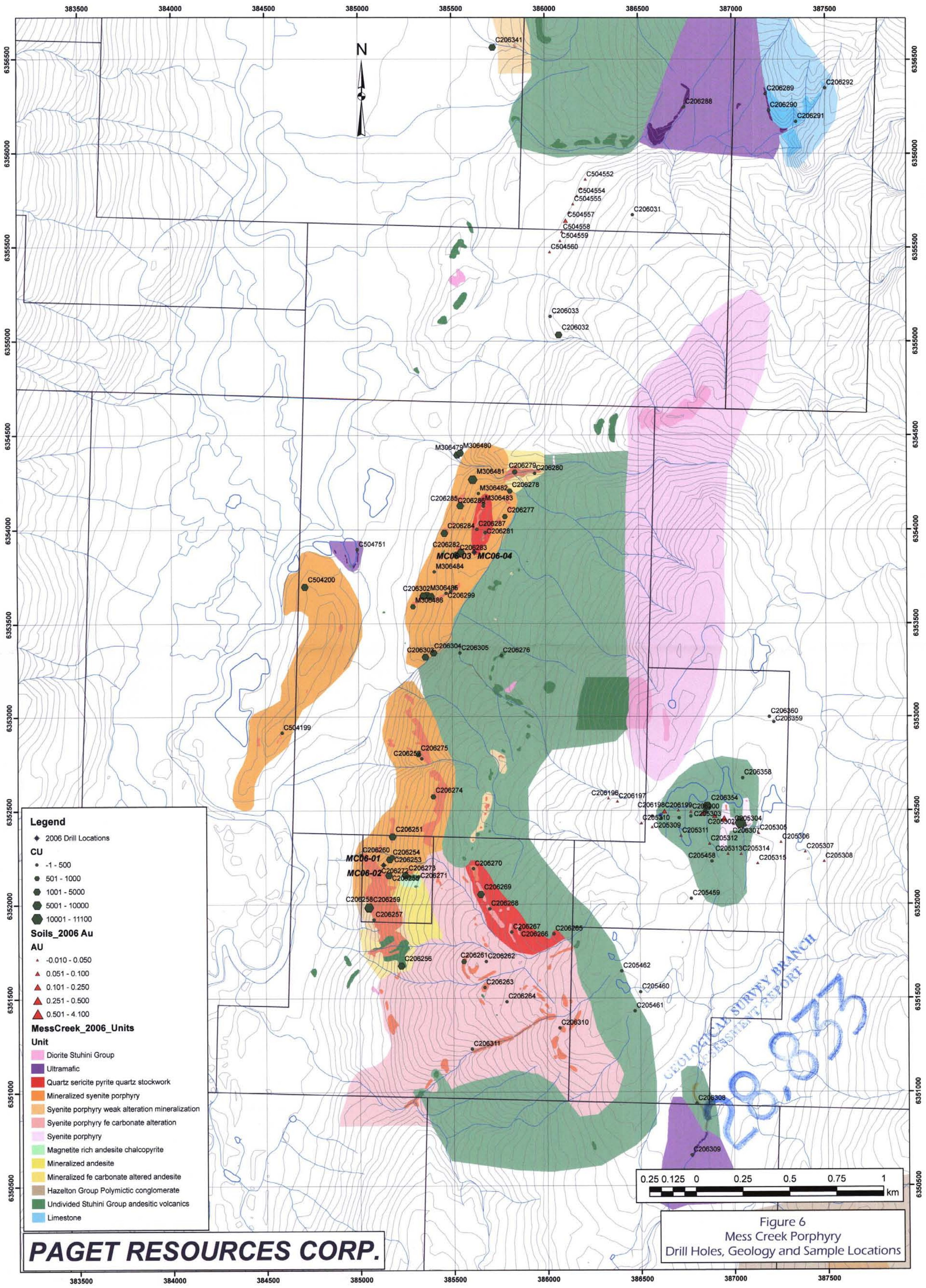


Figure 5
North More Porphyry
Outcrop Geology and Sample Locations



Legend

◆ 2006 Drill Locations

CU

- -1 - 500
- 501 - 1000
- 1001 - 5000
- 5001 - 10000
- 10001 - 11100

Soils_2006 Au

AU

- ▲ -0.010 - 0.050
- ▲ 0.051 - 0.100
- ▲ 0.101 - 0.250
- ▲ 0.251 - 0.500
- ▲ 0.501 - 4.100

MessCreek_2006_Units

Unit

- Diorite Stuhini Group
- Ultramafic
- Quartz sericite pyrite quartz stockwork
- Mineralized syenite porphyry
- Syenite porphyry weak alteration mineralization
- Syenite porphyry fe carbonate alteration
- Syenite porphyry
- Magnetite rich andesite chalcopyrite
- Mineralized andesite
- Mineralized fe carbonate altered andesite
- Hazelton Group Polymictic conglomerate
- Undivided Stuhini Group andesitic volcanics
- Limestone

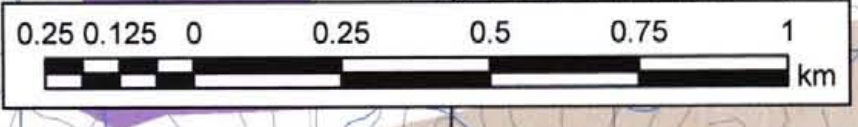
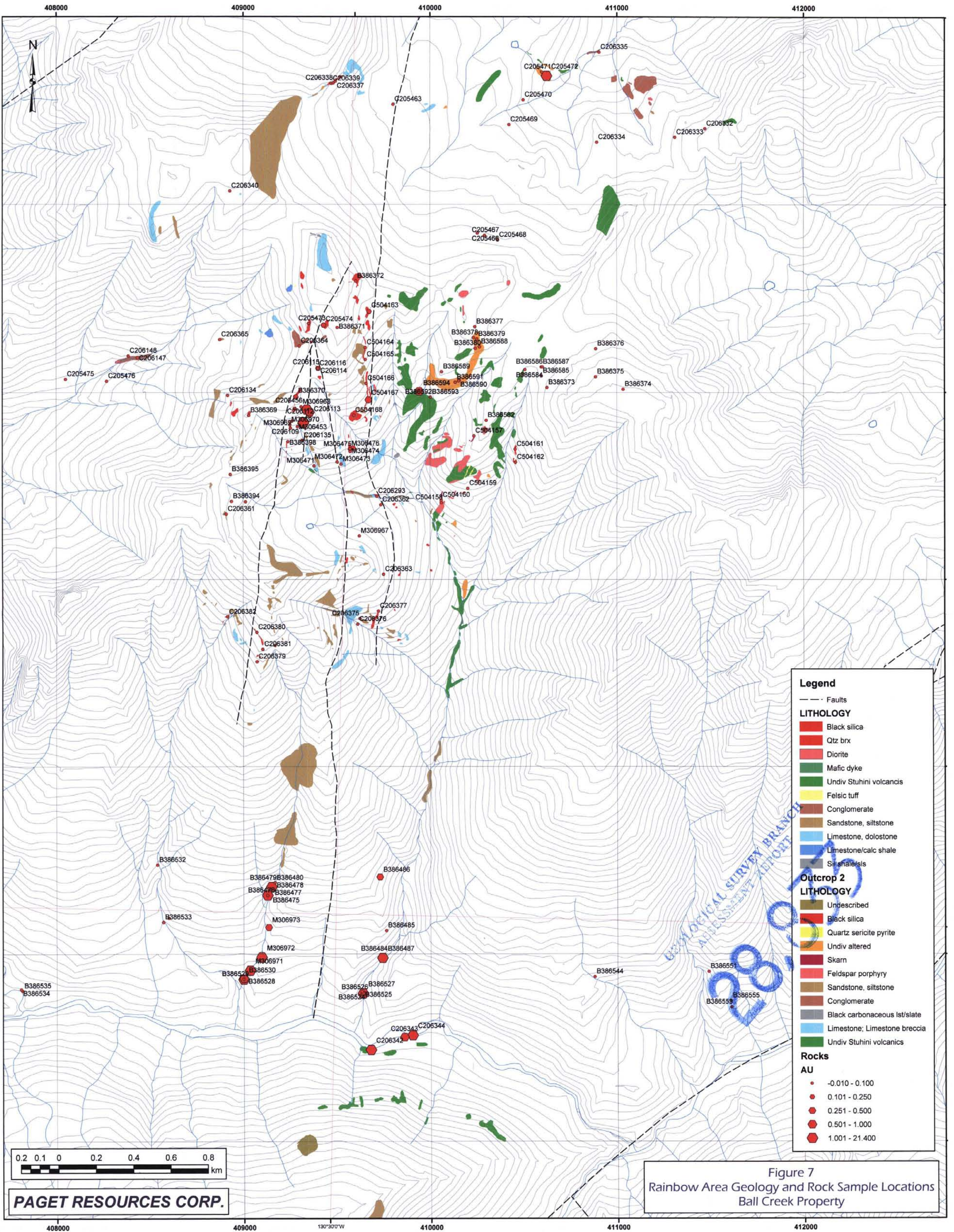


Figure 6
Mess Creek Porphyry
Drill Holes, Geology and Sample Locations

GEOLOGICAL SURVEY BRANCH
ASSESSMENT REPORT
200833



Legend

--- Faults

LITHOLOGY

- Black silica
- Qtz brx
- Diorite
- Mafic dyke
- Undiv Stuhini volcanics
- Felsic tuff
- Conglomerate
- Sandstone, siltstone
- Limestone, dolostone
- Limestone/calc shale
- Sl shale/sls

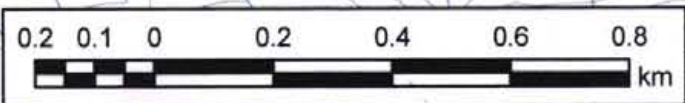
Outcrop 2 LITHOLOGY

- Undescribed
- Black silica
- Quartz sericite pyrite
- Undiv altered
- Skarn
- Feldspar porphyry
- Sandstone, siltstone
- Conglomerate
- Black carbonaceous lst/slate
- Limestone; Limestone breccia
- Undiv Stuhini volcanics

Rocks

AU

- 0.010 - 0.100
- 0.101 - 0.250
- 0.251 - 0.500
- 0.501 - 1.000
- 1.001 - 21.400



PAGET RESOURCES CORP.

Figure 7
Rainbow Area Geology and Rock Sample Locations
Ball Creek Property

GEOLOGICAL SURVEY BRANCH
 ASSESSMENT REPORT

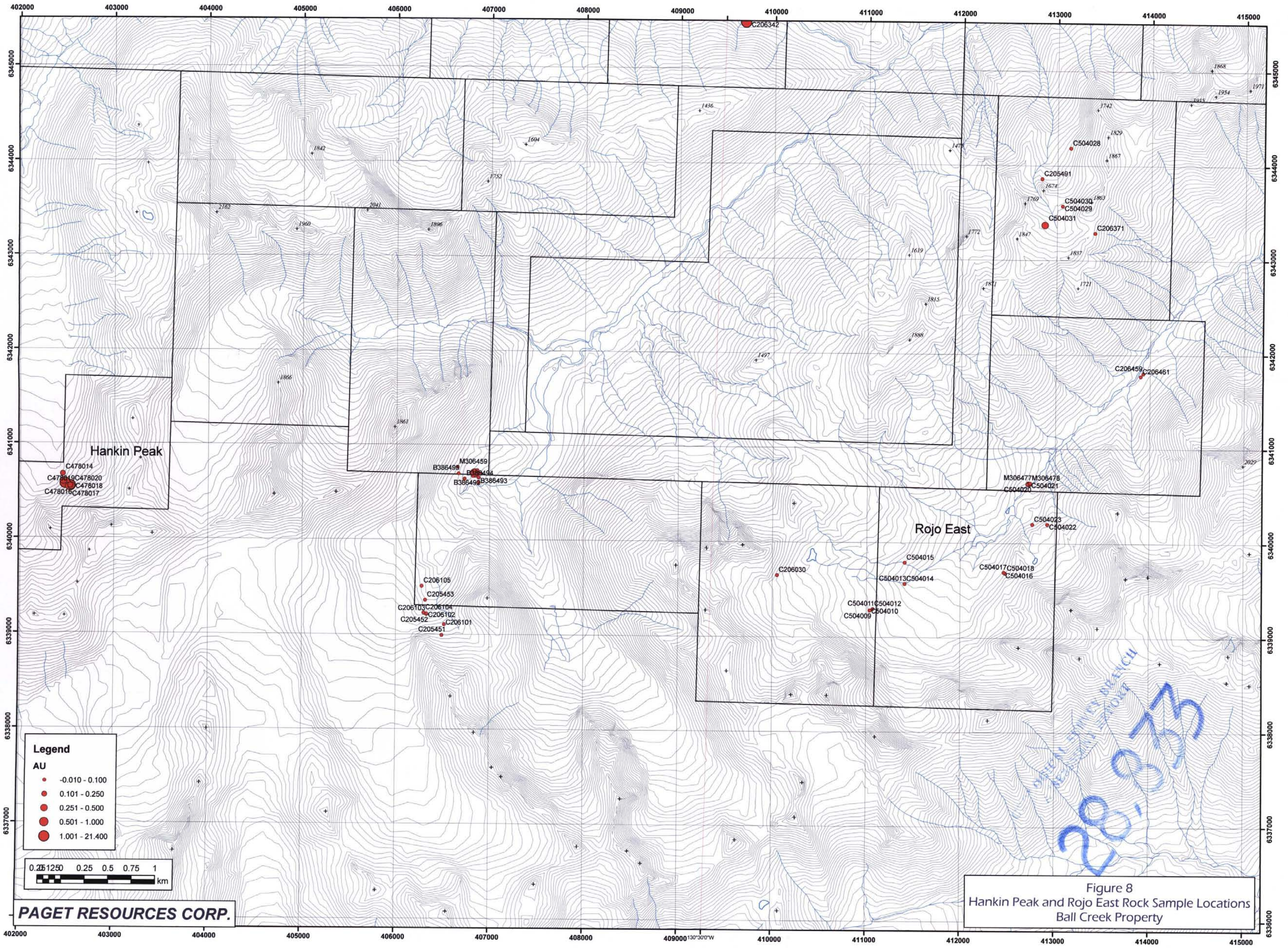
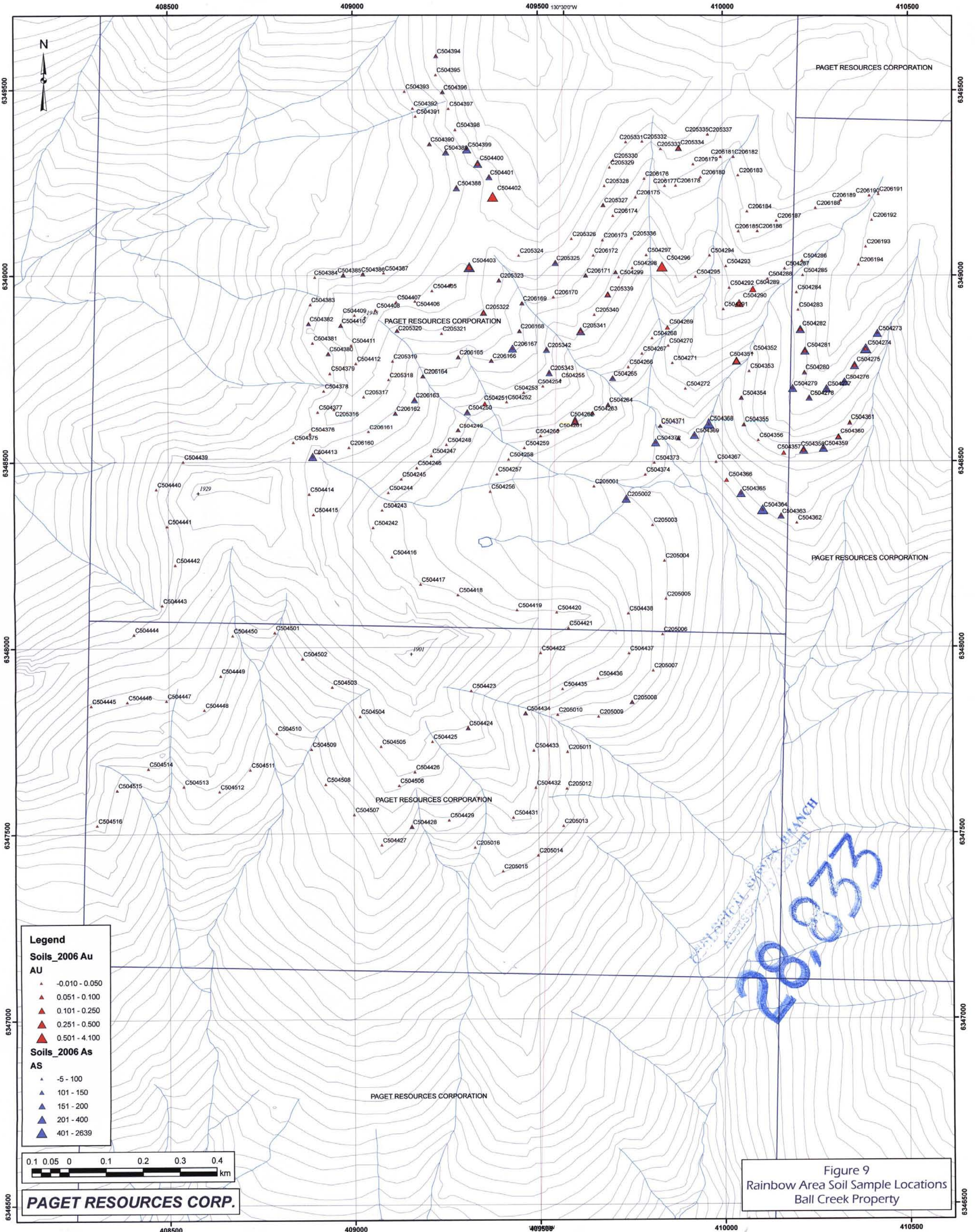


Figure 8
 Hankin Peak and Rojo East Rock Sample Locations
 Ball Creek Property

PAGET RESOURCES CORP.



Legend

Soils_2006 Au

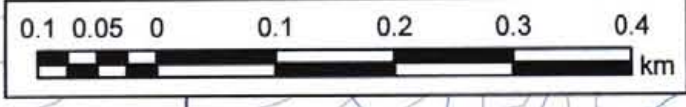
AU

- ▲ -0.010 - 0.050
- ▲ 0.051 - 0.100
- ▲ 0.101 - 0.250
- ▲ 0.251 - 0.500
- ▲ 0.501 - 4.100

Soils_2006 As

AS

- ▲ -5 - 100
- ▲ 101 - 150
- ▲ 151 - 200
- ▲ 201 - 400
- ▲ 401 - 2639



PAGET RESOURCES CORP.

Figure 9
Rainbow Area Soil Sample Locations
Ball Creek Property

GEOLOGICAL SURVEY BRANCH
28,033

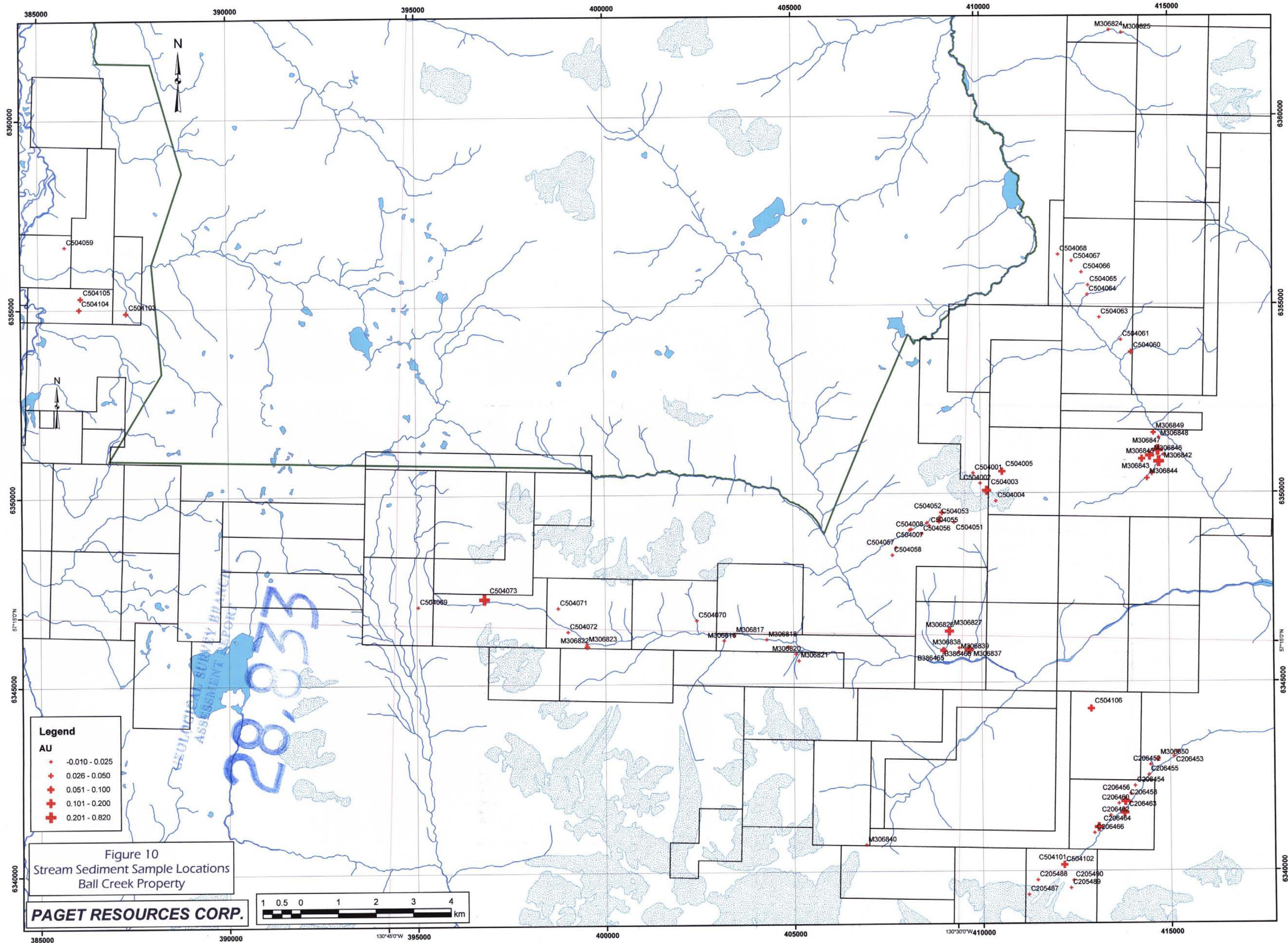
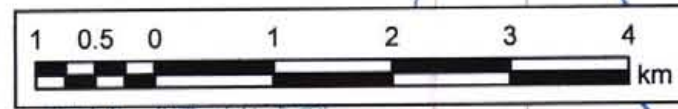


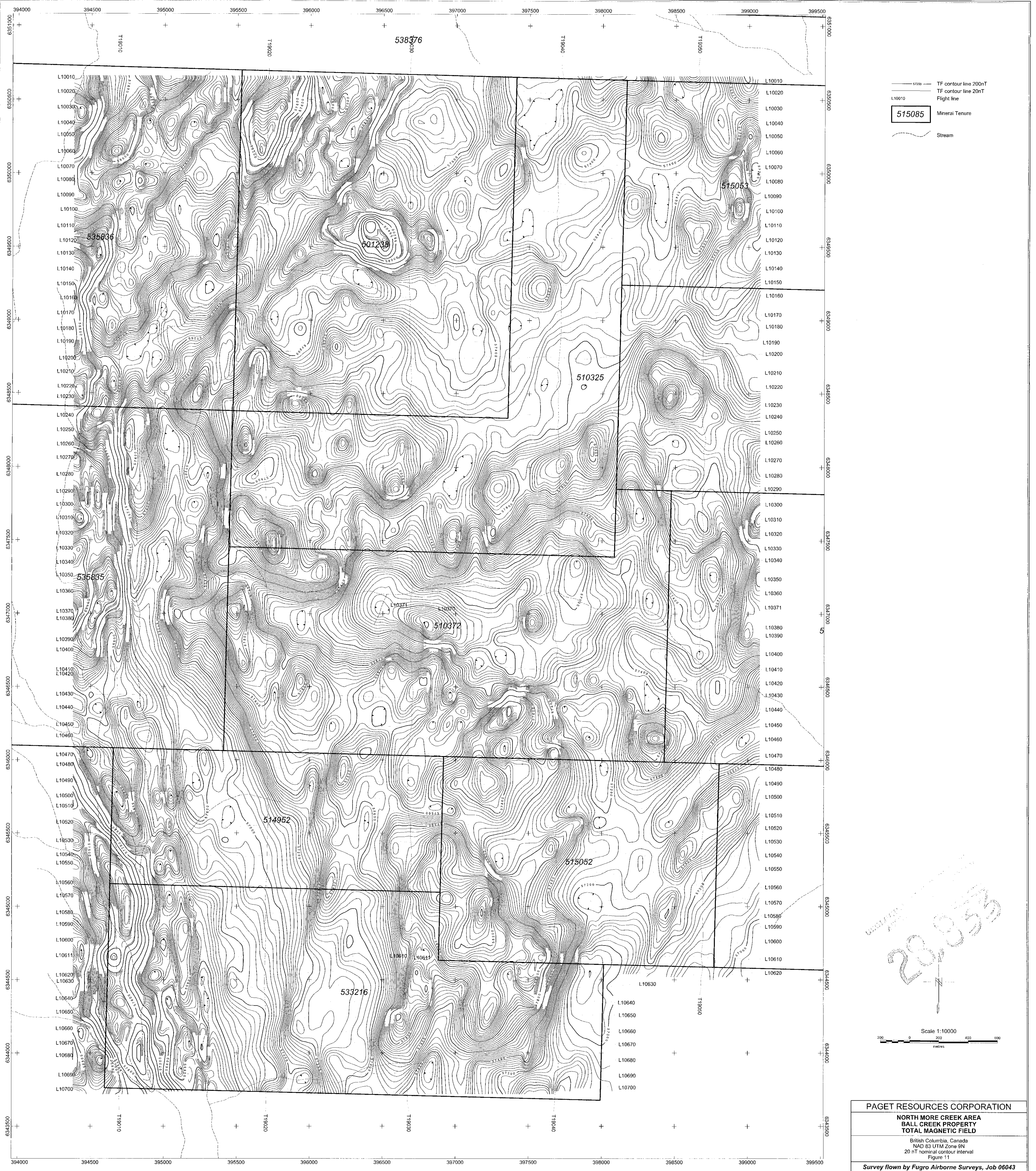
Figure 10
Stream Sediment Sample Locations
Ball Creek Property

PAGET RESOURCES CORP.



2013

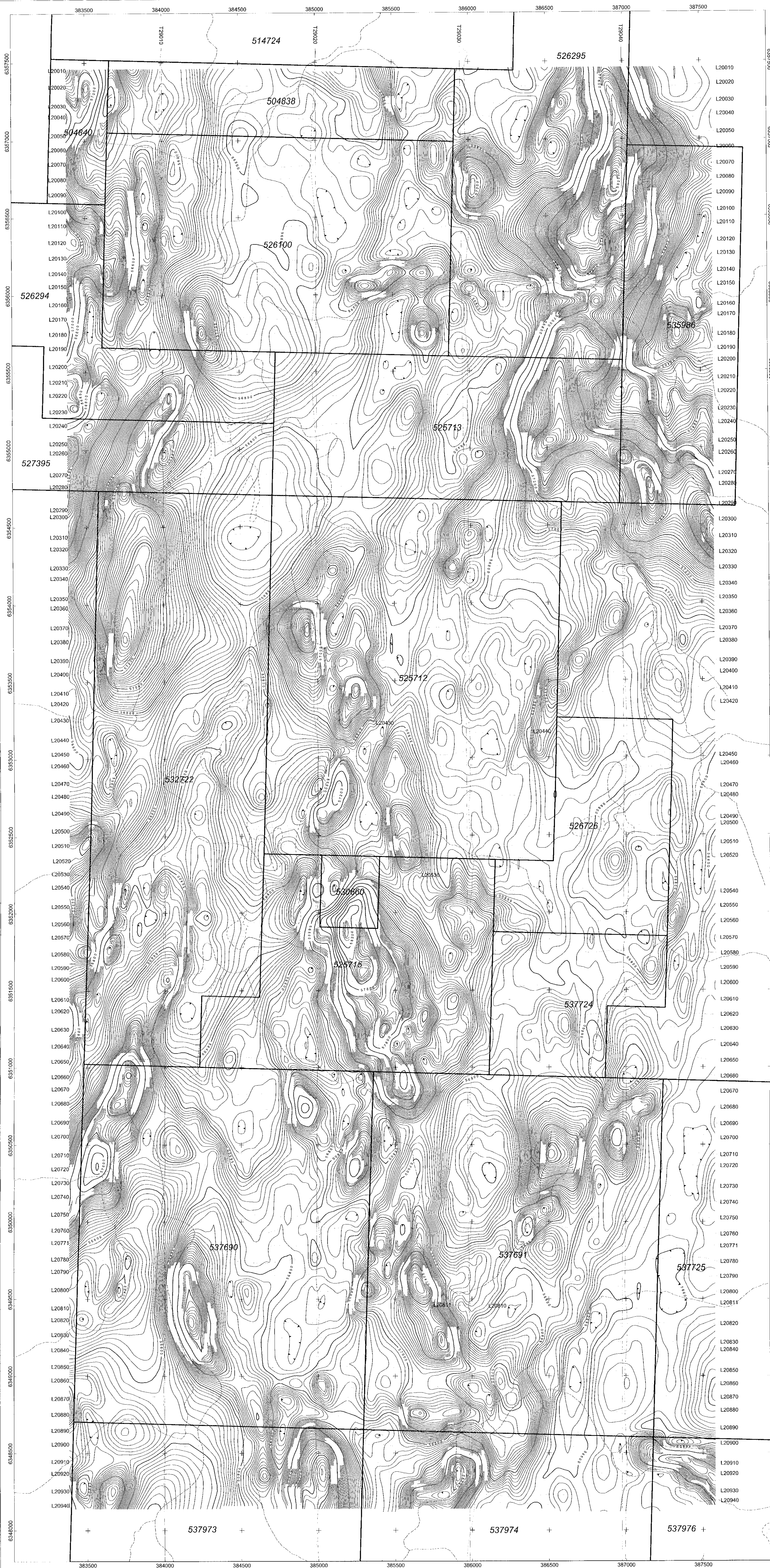
GEOLOGICAL SURVEY BRANCH
ASSESSMENT REPORT



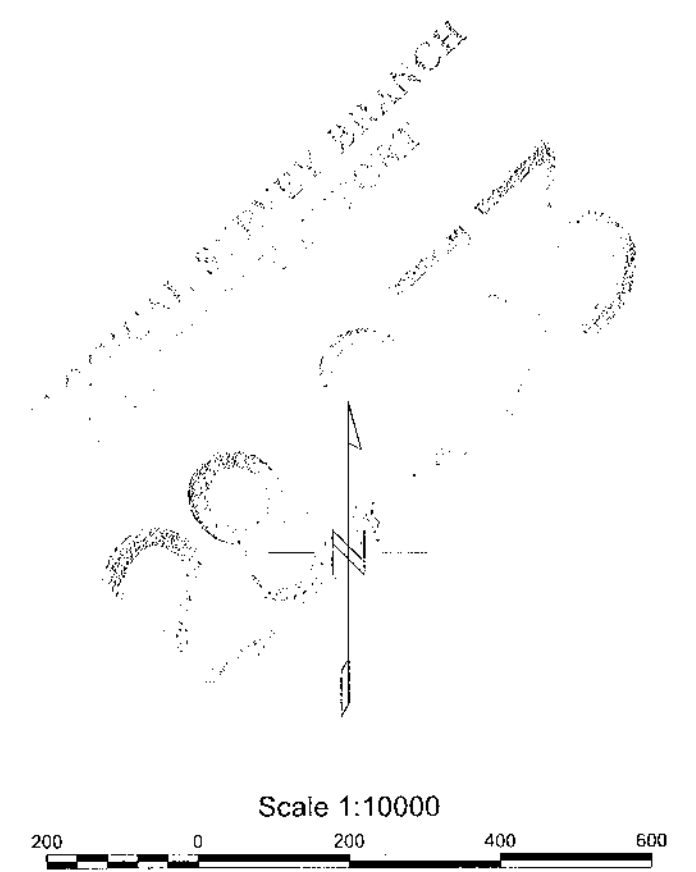
5720 TF contour line 200nT
 5720 TF contour line 20nT
 Flight line
 515085 Mineral Tenure
 Stream

Scale 1:10000
 0 200 400 600
 feet

PAGET RESOURCES CORPORATION
NORTH MORE CREEK AREA
BALL CREEK PROPERTY
TOTAL MAGNETIC FIELD
 British Columbia, Canada
 NAD 83 UTM Zone 8N
 20 nT nominal contour interval
 Figure 11
 Survey flown by Fugro Airborne Surveys, Job 06043



— TF contour line 200nT
 — TF contour line 20nT
 L10010 Flight line
 515085 Mineral Tenure
 ~~~~~ Stream



**PAGET RESOURCES CORPORATION**  
**MESS CREEK AREA**  
**BALL CREEK PROPERTY**  
**TOTAL MAGNETIC FIELD**  
 British Columbia, Canada  
 NAD 83 UTM Zone 9N  
 20 nT nominal contour interval  
 Figure 2  
 Survey flown by Fugro Airborne Surveys, Job 06043