



Le Baron Prospecting  
Port Renfrew, BC

**RECEIVED**  
MAR 16 2007  
Gold Commissioner's Office  
VANCOUVER, B.C.

TITLES DIVISION, MINERAL TITLES  
VICTORIA, BC  
MAR 13 2007  
FILE NO. \_\_\_\_\_  
LOG IN NO. \_\_\_\_\_

## Prospecting and Technical and Geochemical Assessment Report

The Le Baron Tenures: Yahu Creek Fault Project

Le Baron Tenures #1 & #2 // 509083 + 509084  
Vancouver Island, British Columbia

Victoria Mining Division  
NTS: M092C058 / M092C059



**Owners / Operator:**  
Scott Phillips / Bob Morris  
Le Baron Prospecting  
16977 Tsonaquay Dr  
Port Renfrew BC  
V0S-1K0  
**Author:** Scott Phillips

GEOLOGICAL  
ASSESSMENT

28.953

Date: December 13, 2006



***Le Baron Prospecting***  
**Port Renfrew BC.**

**Table of Contents:**

**Tenure Location and Summary ..... pg 1**  
**Tenure History .....pg 1**

**Regional Geology .....pg 2**  
**Historical Information .....pg 2**

**2006 Prospecting Overview .....pg 3**  
**Area Faults / Felsic Sills .....pg 3**

**2006 Work Program ..... pg 4**

**2006 Cost Structure ..... pg 5**

**Pictures ..... pg 6, 7, 8**

**Recommendations / Outlook ..... pg 9**

**Acknowledgments ..... pg 9**

**MTO: conformation of event ..... pg 10**

**Appendix 1:**  
**Maps: Overview - 1-100,000, Yahu fault - 1-10,000, working - 1-5,000**

**Appendix 2:**  
**ALS Chemex Assay results**

### **Tenure Location & Summary:**

Both of these large mineral tenures are located directly south of the town of Port Renfrew BC, which is approximately located 100 kilometers west of Victoria BC. Port Renfrew is a small town of approximately 200 residents, growing in the summer months due to the areas abundance of recreational opportunities such as fishing and camping and hiking.

These mineral tenures are two large adjoining blocks. Le Baron #1 [tenure #509083] is 513.44 ha in size, and Le Baron #2 [tenure #509084] is 534.69 ha in size. These tenures are located within Timber West's private lands, and therefore Mineral Access Agreements are in place in a year to year agreement. Access is 4 km east of Port Renfrew, along hwy 14, at the logging road Elliott Main. There is a locked gate which the author has a key which is part of the Mineral Access Agreement. A series of maintained and drivable logging spur roads are throughout the tenures.

### **Tenure History:**

This area over the years has been extensively explored. Information about this area can be found in the Minfile Reports.

Murton; 092C140, report #16,507, #15,262,

Kinsley; 092C058

Spanish; 092C071

Tre Guis Mineral Ltd, of Cobble Hill / Port Renfrew owns the mineral tenures directly east of these Le baron tenures, [minfile # 27973] there seems to be a relationship between the structure of the area and the general mineralization.

Triangle Ventures of Victoria also owns huge mineral and placer tenures within the area also; they are currently conducting a large exploration program in the Sombrio Area.

In recent reference to the Geological and Exploration Report # 25,697 conducted by AGC, American Gold Corporation 1997 on the Galleon Gold Property, by A.A. Burgoyne. This report was the beginnings of a planned exploration program in which \$140,000 was to be justified in exploring specific targets within the then Galleon Gold Tenures.

## **Regional Geology:**

The geology of southwestern Vancouver Island is composed of three distinctly different terranes:

- Paleozoic and Mesozoic metamorphic, volcanic, sedimentary and intrusive rocks of the Wrangellia Terrain
- Mesozoic volcano-sedimentary rocks of the Pacific Rim Terrain including the mostly sedimentary Leech River Complex.
- Tertiary rocks of the Crescent Terrain, including the Metchosin Igneous Complex and the sedimentary Carmanah Group (Yorath and Nasmith, 1995).

The older rocks of Wrangellia were thrust against the younger Leech River rocks along the San Juan Fault that runs roughly east west from Port Renfrew to Cobble Hill. The Leech River Complex (Pacific Rim Terrain) was thrust onto the younger Crescent Terrain rocks along the Leech River Fault. This abduction was accompanied by a magmatic event between 40 and 50 Ma ago.

## **Historical Exploration:**

Bedrock and placer gold occurrences within and adjacent to metasedimentary rocks of the Leech River Complex have a long history of development and production. The Spaniards first identified placer gold near Sombrio Point in 1792. Some production from this occurrence was reported during the period 1907-1914 utilizing a 50 man monitor and sluice operation.

The Leech River placer deposits were discovered in the 1860's and was extensively worked up until the late 1870's. Holland (1944) estimated the actual value of gold produced during this period at between \$100,000-\$200,000. Between 1924- 45, a recorded 192 ounces of gold were recovered from the area.

In the Port Renfrew area, a gold nugget was reported to have been found, in 1893, in a small stream flowing into Providence Cove. Further prospecting at this time led to the discovery of several quartz veins, all carrying small quantities of gold in surface outcrops.

Between 1900 and 1924 the Baird family of Port Renfrew, were a few of the first settlers to this region, they were farmers and miners by trade. They staked several crown grant tenures and 6 of them were located on the lands directly in which the Le Baron tenures are located. There is reference to a drift of 90 feet which was done and surveyed in 1914 and is just north east of the Yahu Fault on the historic Kinsley crown grant tenures. The crown grants at that time were known as Moonlight 780 and Mountainview 781. The drift was exploration adit of a 4 – 6 foot quartz seam loaded with Au. Future exploration by Le Baron Prospecting will uncover the mystery of the huge Au lode within the area, and find and document the Kinsley Adit.

## **2006 Prospecting Overview:**

This is the third year of Le Baron Prospecting owning these tenures. Previously, the exploration consisted of conducting site surveys, road marking using GPS, brushing roads for access. Last year's report [minfile 28,061] was a controlled stream sediment sampling program of all the creeks and drainages within the tenures and basic road side rock chip.

The outline of this report is the geological study of the known fault structures, basic geochemical assaying, identifying drilling target areas, and photos of areas of interest. There is an area fault map and a copy of an aero magnetic map showing the geological hot spot just east of these tenures in which reference to this geological report is about.

I am a "professional prospector" and I have a very clear understanding of the geological activity which has happened in the Port Renfrew area. I, along with my prospecting partner have traversed almost of the entire tenure Le Baron #1 [tenure #509083] and we have observed the huge abundance of Au bearing quartz veins, in some cases over 30 veins within in 100 meters, some of the veins range in width of several centimeters to a few which are measured in meters. This area is very unique and represents its own geological spot in time. With a clear understanding of this area it is well known and documented that the abundance of quartz seams carries the Au. This area in my professional opinion, this area holds a huge potential for an Au deposit of size.

### **Area Faults:**

In reference to both [Muller 1982 file 821, Rushmore 1982] both discuss the geological setting of the San Juan Fault which is immediately north of these tenures and the Leech River Fault immediately south east of these tenures, and the resulting splay faults which trend in a north eastern direction within the tenure blocks. Both professionals have identified at least three different eras of plate tectonic movement, and geological time from the late Mesozoic through the Tertiary to the late Eocene, that last being about 25 million years ago which is the largest activity in re guards to the under-thrusting of the Leech River Fault which possibly impacted the area splay faults. According to Muller 1982, "the area north east trending faults have potential for economic significance" "the quartz veins are abundant, most are gold bearing, and they represent the last era of geological activity within the region".

### **Felsic Sills:**

A lot of work and information about the area was in reference to AA. Burgoyne, P.Eng. Also previous geologists prior. Burgoyne suggests in the AGC report #25,697 that the felsic sills are "brittle and break more readily than the medasediments and thus act as a favorable and receptive host for the Au bearing quartz vein mineralization", and that the felsic sills represent a magmatic origin and a possible hydrothermal source for epigenetic Au bearing quartz / sulphide veins".

The author along with his prospecting partner set out to follow up and further enhance the historical data. They conducted several days of prospecting and GPS mapping of the Le Baron #1 and Le Baron #2 tenures. Several days were spent traversing and mapping the Yahu Creek Fault.

#### **2006 Work Program**

**Itemized list of work conducted / all work and reference points are marked on the working maps of 1-5000.**

- **Rock Chip:** 25 rock chip samples were taken.  
Quartz seams, slate, greywacke, biotite schist, mudstone, rhyolite
  - 8 rock chip and stream sediment samples were submitted by "rush order" to ALS Chemex in Vancouver.
  - **Stream Sediment:** 10 stream sediment samples taken  
moss matt samples were obtained using a plastic mesh screen and hand pan.
  - **GPS + Survey Line:** Lorraine Global Map 100 used to plot line and rock chip sample points.  
3000 meters of surveyed line run Yahu Fault.  
1000 meters run on road in two other locations
  - **Pictures:** 10 pictures were taken of the area.  
Yahu Fault and the "blow hole" and Au seam and Quartz Au carrying vein.
- 
- The Yahu Fault trends to the north east at 30 degrees, for a measured distance of 3000 surveyed meters.
  - Rhyolite sills are located along the Yahu Fault, and are anywhere from 30 cm to 90 centimeters thick, and are of sporadic distance through out the faults where exposed.
  - Quartz seams and intrusions are abundant throughout the tenures, more so on the Le Baron #1 and the northern portion of Le Baron #2. One area of Le Baron #1, the quartz veins are so many, more than 30 in a 100 meter distance. Again, most quartz veins trend north easterly at 30 - 45 degrees.
  - A layer of clay is present in the lower portion of Le Baron #2 and is of glacial decent. The clay seam is of interest and will also be looked into in the future as to the gem stones deposited within.
  - Dimension stone is abundant throughout the tenure, black slate, mudstone, and nice flag stone have an economic possibility as well.
  - The tenures have many drivable and assessable logging roads, a few are over grown with small brush, a work plan will be required to use machinery to remove the heavy overgrowth, but most should be easily removed by power saw. The temporary bridge has been removed from the Payzant Creek crossing, the most southern Le Baron #2 tenure will have to be accessed from now on by motor bike
  - The Yahu Creek fault is of economic potential as there is an abundance of Au for great distance, a drilling and or trenching program is warranted along this fault as the next step.

**2006 Cost Structure**

**Work program:**

September 16<sup>th</sup>, 17<sup>th</sup>, 23<sup>rd</sup>, 24<sup>th</sup>

October 21<sup>st</sup>, 22<sup>nd</sup>, 28<sup>th</sup>, 29<sup>th</sup>

November 18<sup>th</sup>, 19<sup>th</sup> 2006

**Scott Phillips**

Prospector / Owner = \$30.00 / hr x 10 days x 8 hrs / day ..... = \$2400.00

**Bob Morris**

Prospector / Labour = \$20.00 / hr x 10 days x 8 hrs / day ..... = \$1600.00

**Accommodations**

16977 Tsonoquay Dr

Port Renfrew = \$70.00 / day x 10 days ..... = \$700.00

Truck 4x4 = \$50.00 / day x 10 days ..... = \$500.00

**ALS Chemex**

Geochemical Assays [8] rush order ..... = \$754.68

**Report compilation**

Le Baron Prospecting = 1 day / \$350.00 / day ..... = \$350.00

|   |
|---|
| <b>Total Work Report 2006 ..... = \$6204.68</b> |
|---|

**Author:**

I have an extensive knowledge of the area of Port Renfrew, and I have been actively prospecting the area for many years, I have several mineral tenures and a few placer tenures as well. I'm currently studying plate tectonics of the Leech River Fault and the formation of the Island Intrusions, West Coast Crystalline Complex.

I fully authorize the information within this report to further enhance the area, and the tenures of Le Baron Prospecting.

Scott Phillips  , Date Dec 13, 2006

**Pictures:**

**Yahu Fault**

**Au Showing:** ALS Chemex Assay # B-394154



**Yahu Fault "Sulphide Blow Hole"**

This hole has been active within the past year.

**The hole:** is deeper than 30 feet, and a heavy smell of sulphides is present in the area.



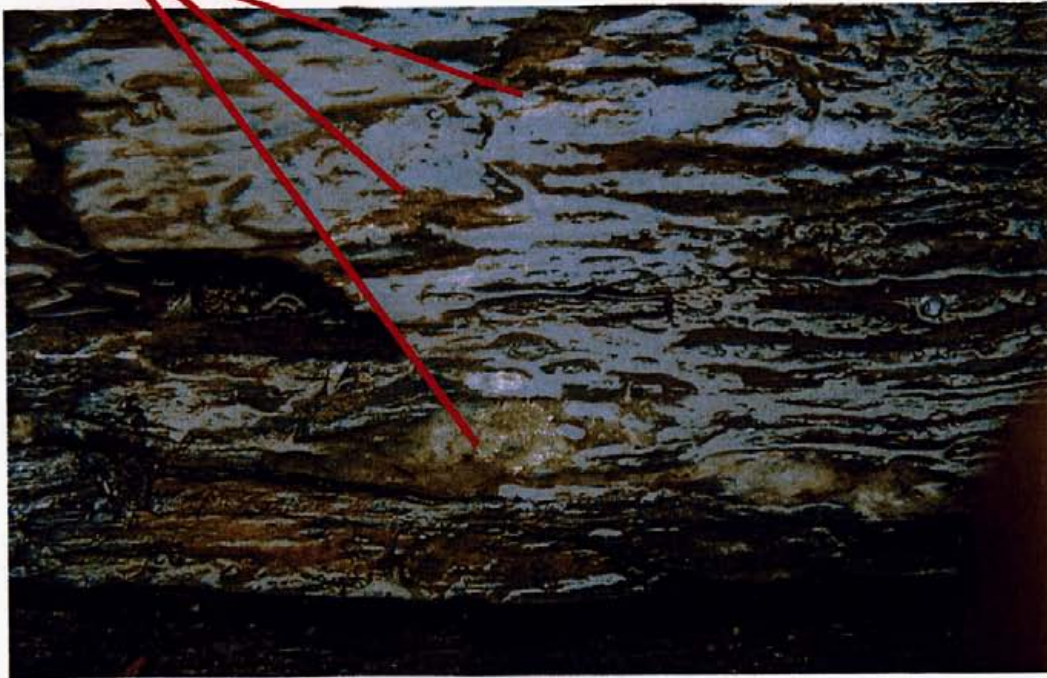


**Yahu Fault.**

Heavy folding and metamorphism of the Greywacke / Shists



**Au in slate**



**A quartz seam 12 inches wide with visible Au, and other oxidization.**



**Pure white quartz seam, this one is 24 inches wide, intruding black sedimentary rock of the Leech River Complex.**



**First Indicator of a huge Au lode in the quartz veins in the Le Baron Tenures.  
Picture taken in 2004 / Le Baron # 1**

Au.



**Follow up and Recommendations going forwards.**

- Systematic geochemical assaying every 100 meters along Yahu Fault.
- Locate the Kinsley Crown Grant Tenures, and document and plot entrance to drift.
- Secure a possible option agreement with partners.
- Look into a feasibility study to use the flagstone as a mine able resource for quarrying block, stepping stone, and talk to established contractor in area if rock meets his needs.
- Road maintenance, brushing for easier access to some Elliott spur roads.
- Lock up tenures for long term plan.

**Acknowledgments:**

- ALS Chemex: Vancouver, geochemical assaying analysis.
- MTO: maps and reference material
- Minfile: historic reports and related data.
- Tre Guis Minerals: aero magnetic map



scottphillips53@msn.com

---

**From :** <MT.online@gov.bc.ca>  
**Sent :** December 15, 2006 2:06:10 AM  
**To :** scottphillips53@msn.com  
**Subject :** SOW-M (4116365) 2006/DEC/14 18:6:10 Mineral Titles Online, Transaction event, Email confirmation

---

Event Number: 4116365  
Event Type: Exploration and Development Work / Expiry Date Change

Work Type Code: B

Required Work Amount: 4191.36

Total Work Amount: 6204.68

Total Amount Paid: 419.14

PAC Name: Le Baron

PAC Debit: 0.00

Tenure Number: 509083  
Tenure Type: M  
Tenure Subtype: C  
Claim Name:  
Old Good To Date: 2006/dec/15  
New Good To Date: 2007/dec/15  
Tenure Required Work Amount: 2052.58  
Tenure Submission Fee: 205.26

Tenure Number: 509084  
Tenure Type: M  
Tenure Subtype: C  
Claim Name:  
Old Good To Date: 2006/dec/17  
New Good To Date: 2007/dec/17  
Tenure Required Work Amount: 2138.78  
Tenure Submission Fee: 213.88

Your technical work report is due in 98 days as per Section 13 of the Mineral Tenure Act and Section 16 and Schedule A of the Mineral Tenure Act Regulation. Please attach a copy of your confirmation page to the front of your report.

Server Name: PRODUCTION

Map created Thu Dec 14 17:36:57 PST 2006

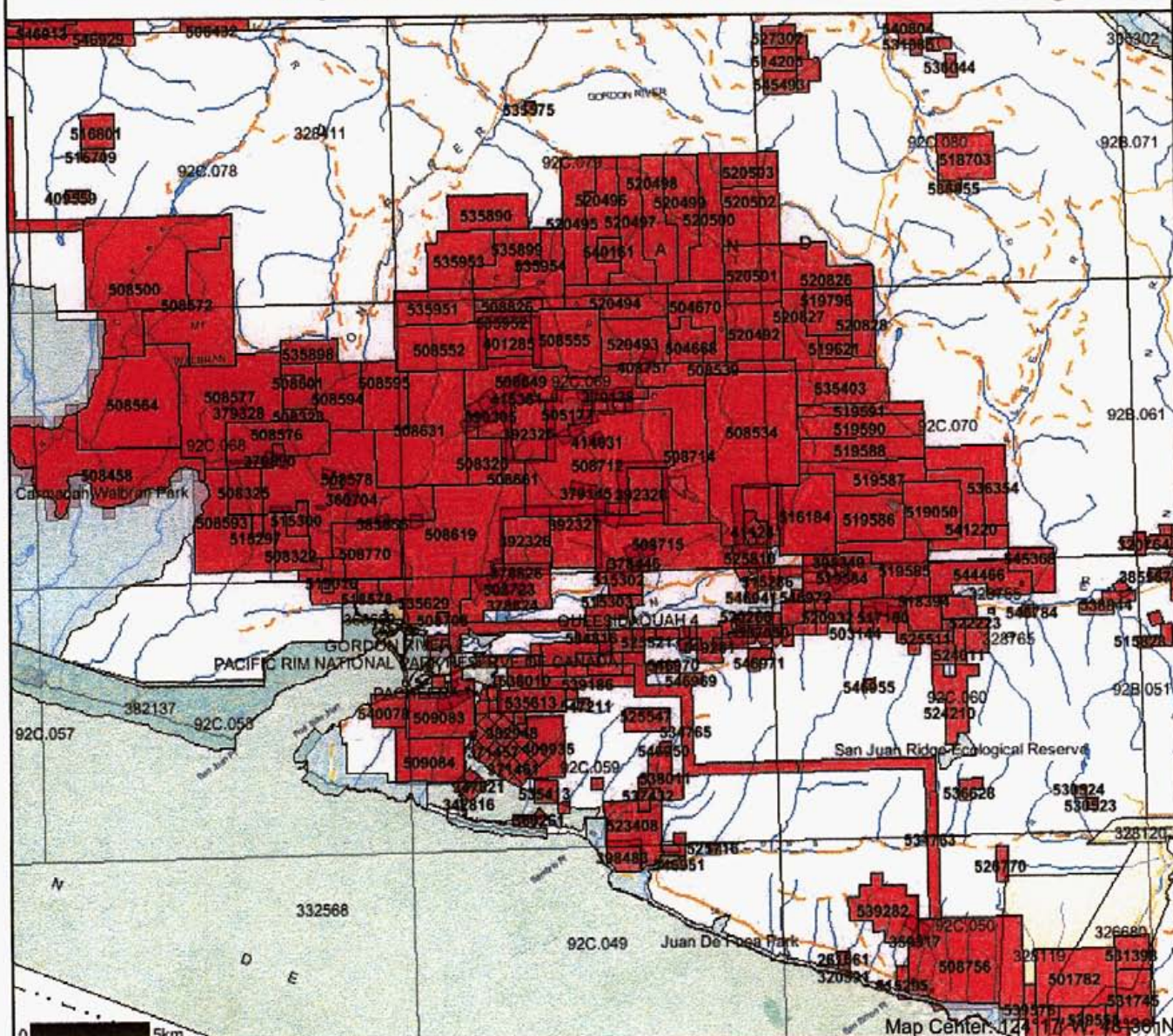


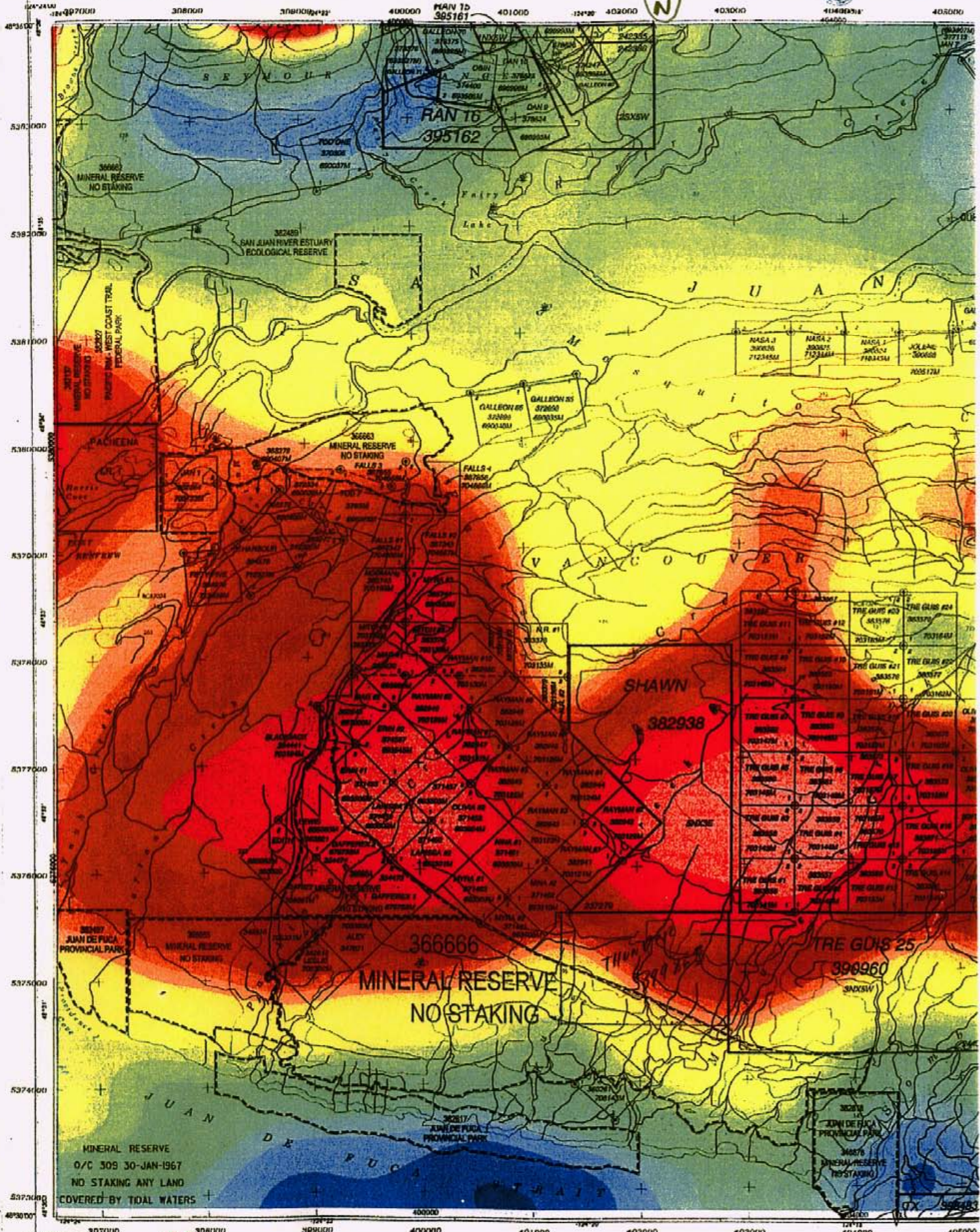
### Legend

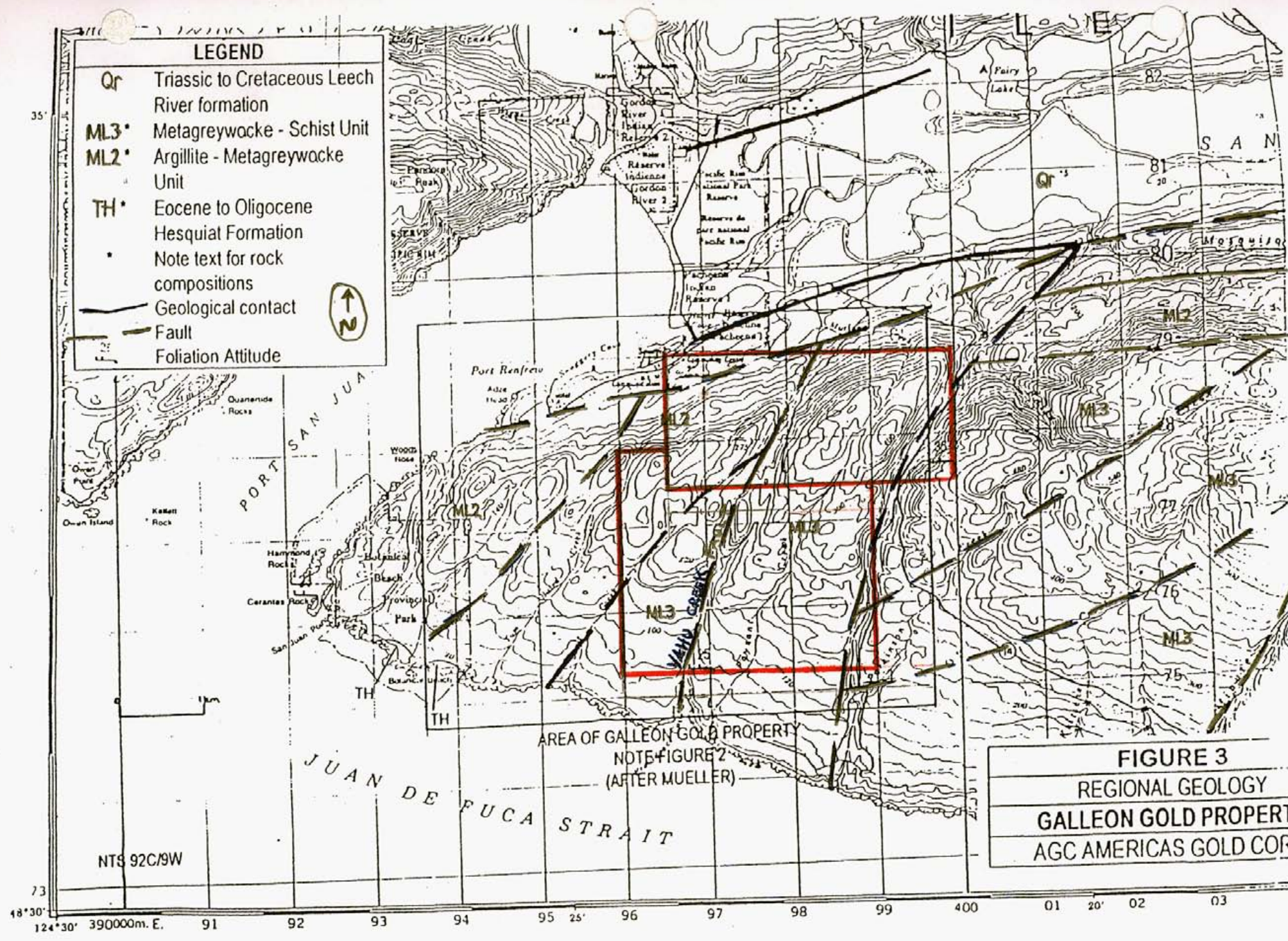
- Indian Reserves
- National Parks
- Parks
- Mineral Tenures Reserves (Sites)
- Placer Claim Designation
- Placer Lease Designation
- No Staking Reserve
- Conditional Reserve
- Release Required Reserve
- Surface Restriction
- Recreation Area
- Others
- BCGS Grid
- Annotation (1:250K)
- Transportation - Points (1:250K)
- Airfield
- Anchorage - Seaplane
- Ferry Route
- Heliport
- Seaplane Base
- Air Field
- Airport
- Air Feature - Condition Unknown
- Airport, Abandoned
- Transportation - Lines (1:250K)
- Ferry Route
- Aerial Cableway
- Road (Gravel Undivided) - 1 Lane
- Road (Gravel Undivided) - 3 Lanes
- Road - Paved, 2 Lanes, 2 or More, Divided
- Road (Paved Undivided) - Not Elevated - 1 Lane
- Road (Paved Undivided) - Not Elevated - 2 Lanes
- Road - Paved, 2 Lanes, 2 or More, Undivided
- Road (Unimproved)
- Road - Loose access Dry Weather
- Road (Winter Road)
- Road - Paved, 2 Lanes, 2 Undivided
- Road - Paved, 2 Lanes, 2 Undivided, UIC
- Road - Paved, Divided, access, Non Standard
- Track - Car/Tractor
- Causeway (Railway)
- Cut (Roadway)
- Trail
- Tunnel
- Bridge
- Rail Line - Narrow Gauge - Single Track
- Rail Line (Multiple Track)
- Rail Line (Single Track)
- Rail Line - Abandoned Track
- Cable - Telephone
- Cable - Underwater

Scale: 1:250,000

DO NOT USE FOR NAVIGATION







**LEGEND**

- Qr Triassic to Cretaceous Leech River formation
- ML3\* Metagreywacke - Schist Unit
- ML2\* Argillite - Metagreywacke Unit
- TH\* Eocene to Oligocene Hesquiat Formation
- Note text for rock compositions
- Geological contact
- Fault
- Foliation Attitude



AREA OF GALLEON GOLD PROPERTY  
 NOTE FIGURE 2  
 (AFTER MUELLER)

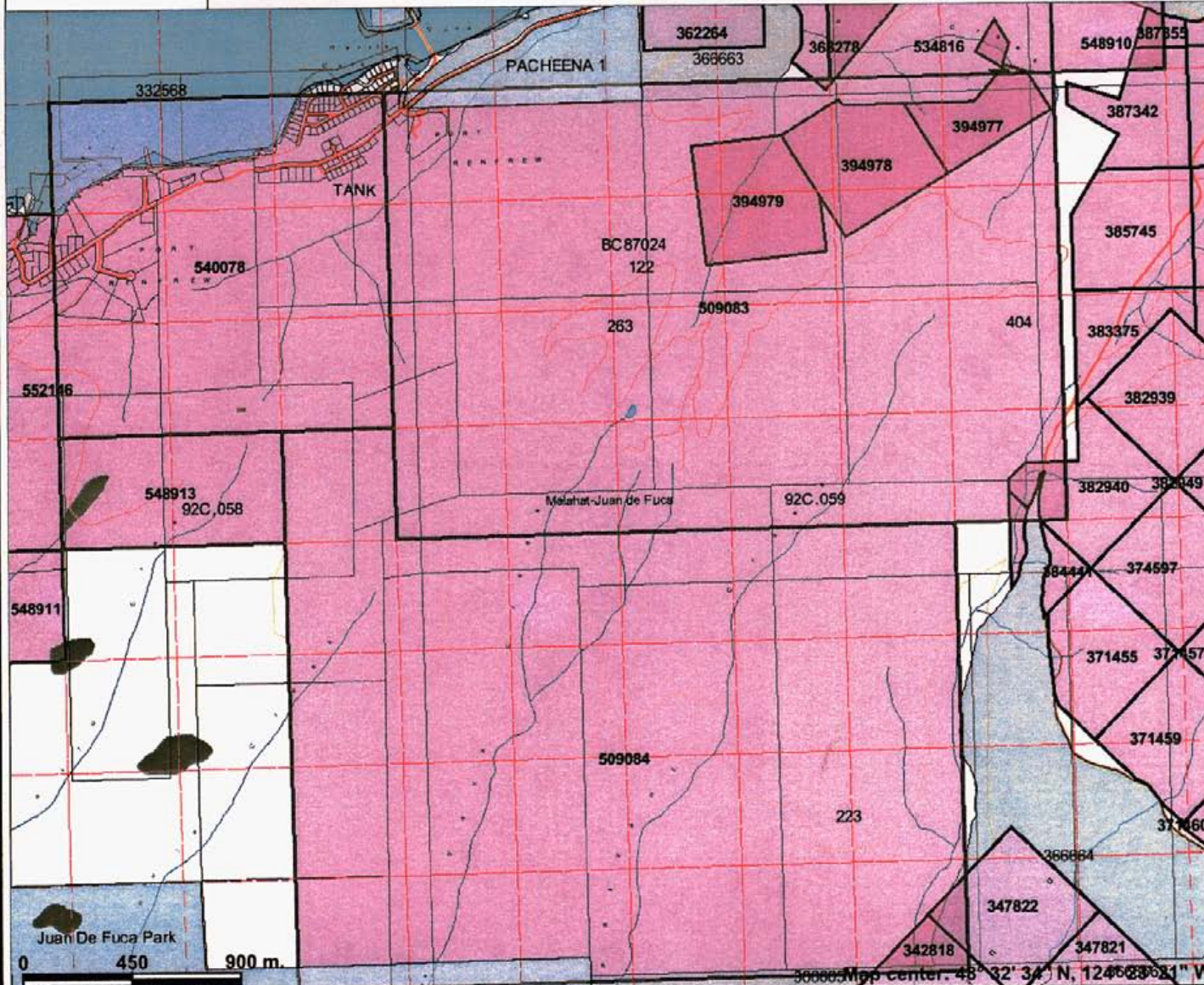
**FIGURE 3**  
 REGIONAL GEOLOGY  
 GALLEON GOLD PROPERTY  
 AGC AMERICAS GOLD COR

NTS 92C/9W

35° 35' 30" 35° 30' 35° 25' 35° 20' 35° 15' 35° 10' 35° 05' 35° 00'

124° 30' 390000m. E. 91 92 93 94 95 25' 96 97 98 99 400 01 20' 02 03

# Le Baron Prospecting // MTO Overview



### Legend

- Indian Reserves
- National Parks
- Parks
- Mineral Titles Grid (LRDW)
- Mineral Tenures (Mineral - LRDW)
- Mineral Claim
- Mineral Lease
- Reserves (Mineral - LRDW Sites)
- Placer Claim Designation
- Placer Lease Designation
- No Staking Reserve
- Conditional Reserve
- Release Required Reserve
- Surface Restriction
- Recreation Area
- Others
- Integrated Cadastral Fabric
- BCGS Grid
- Contours (1:250K)
- Contour - Index
- Contour - Intermediate
- Area of Exclusion
- Area of Indefinite Contours
- Annotation (1:20K)
- Transportation - Points (TRIM)
- Helipad
- Transportation - Lines (TRIM)
- Airfield
- Airport
- Airstrip
- Airport Abandoned
- Ferry Route
- Road (Gravel Undivided) - 1 Lane

Scale: 1:24,999

This map is a user generated static output from an internet mapping site and is for general reference only. Data layers that appear on this map may or may not be accurate, current, or otherwise reliable. THIS MAP IS NOT TO BE USED FOR NAVIGATION.

Notes: Le Baron #1 509083  
Le Baron #2 509084

Map center: 48° 32' 34" N, 124° 03' 21" W





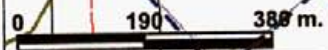
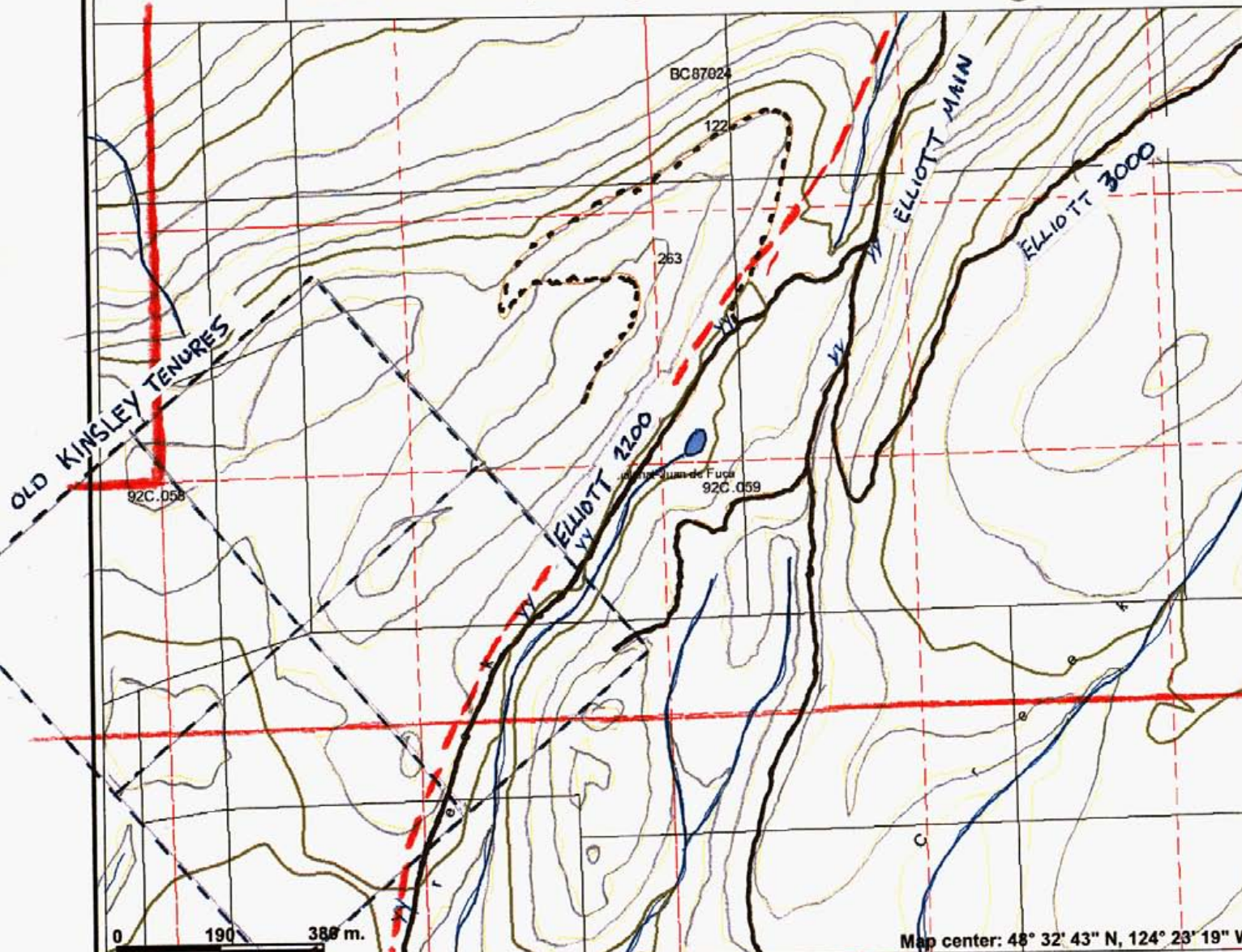
# Le Baron Prospecting // Yahu Fault



## Legend

- Indian Reserves
- National Parks
- Parks
- Mineral Titles Grid (LRDW)
- Reserves (Mineral - LRDW Sites)
- Placer Claim Designation
- Placer Lease Designation
- No Staking Reserve
- Conditional Reserve
- Release Required Reserve
- Surface Restriction
- Recreation Area
- Others
- Integrated Cadastral Fabric
- BCGS Grid
- Contours (TRIM)
- Contour - Index
- Contour - Index.Indefinite
- Contour - Index.Depression
- Contour - Index.Depression Indefinite
- Contour - Intermediate
- Contour - Intermediate.Indefinite
- Contour - Intermediate.Depression
- Contour - Intermediate.Depression Indefinite
- Area of Exclusion
- Area of Indefinite Contours
- Annotation (1:20K)
- Transportation - Points (TRIM)
- Transportation - Lines (TRIM)
- Airfield
- Airport
- Altitude

Scale: 1:10,636

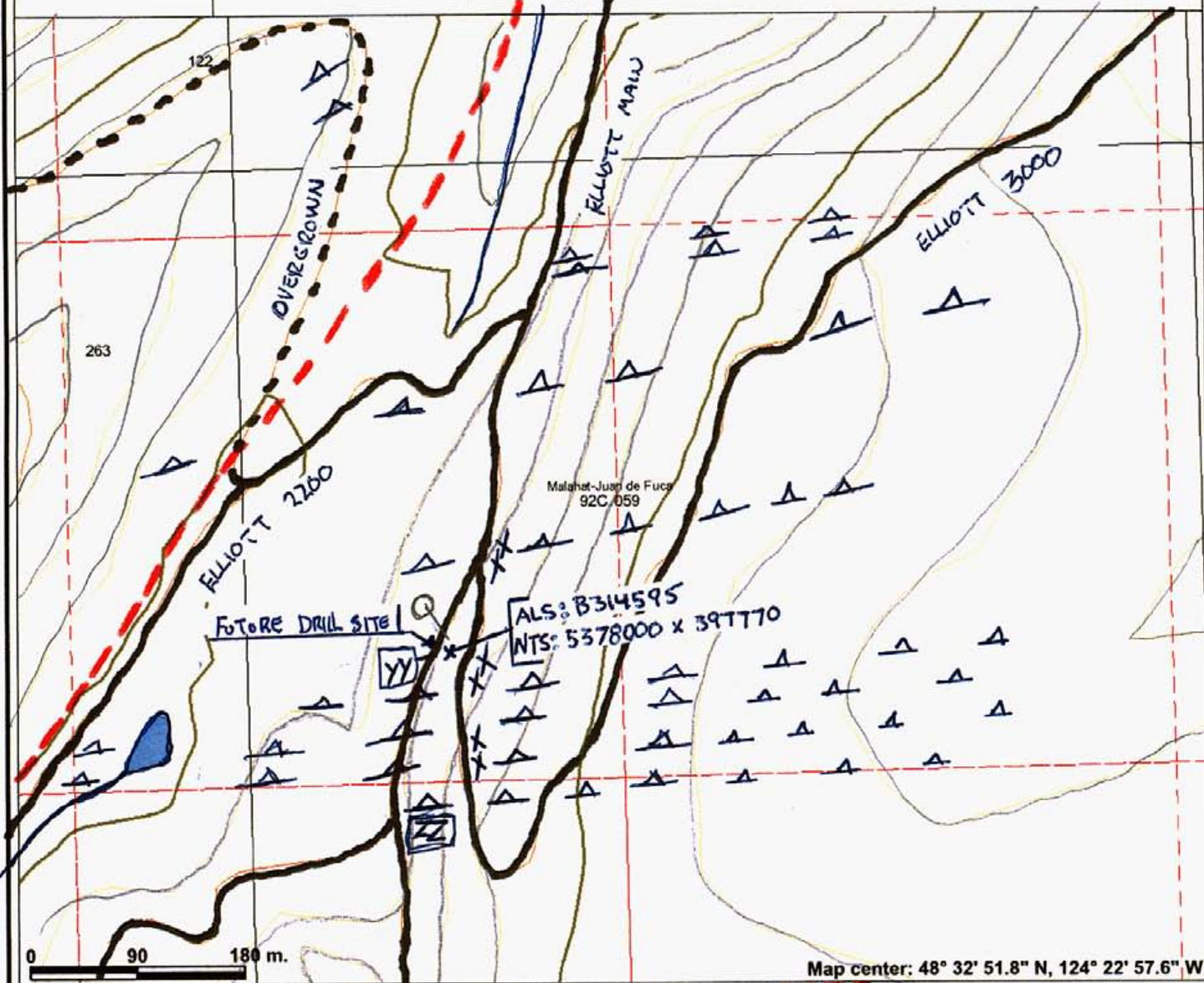


Map center: 48° 32' 43" N, 124° 23' 19" W

This map is a user generated static output from an Internet mapping site and is for general reference only. Data layers that appear on this map may or may not be accurate, current, or otherwise reliable. THIS MAP IS NOT TO BE USED FOR NAVIGATION.

Notes: Yahu Fault  
GPS Plotting Y-Y

# Le Baron Prospecting // Yahu Fault



## Legend

- Indian Reserves
- National Parks
- Parks
- Mineral Titles Grid (LRDW)
- Reserves (Mineral - LRDW Sites)
- Placer Claim Designation
- Placer Lease Designation
- No Staking Reserve
- Conditional Reserve
- Release Required Reserve
- Surface Restriction
- Recreation Area
- Others
- Integrated Cadastral Fabric
- BCGS Grid
- Contours (TRIM)
  - Contour - Index
  - Contour - Index.Indefinite
  - Contour - Index.Depression
  - Contour - Index.Depression Indefinite
  - Contour - Intermediate
  - Contour - Intermediate.Indefinite
  - Contour - Intermediate.Depression
  - Contour - Intermediate.Depression Indefinite
- Area of Exclusion
- Area of Indefinite Contours
- Annotation (1:20K)
- Landform - Points (TRIM)
- Slide
- Landform - Lines (TRIM)
- Cliff
- Crater - Volcanic

Scale: 1:5,000

Map center: 48° 32' 51.8" N, 124° 22' 57.6" W

This map is a user generated static output from an Internet mapping site and is for general reference only. Data layers that appear on this map may or may not be accurate, current, or otherwise reliable. THIS MAP IS NOT TO BE USED FOR NAVIGATION.

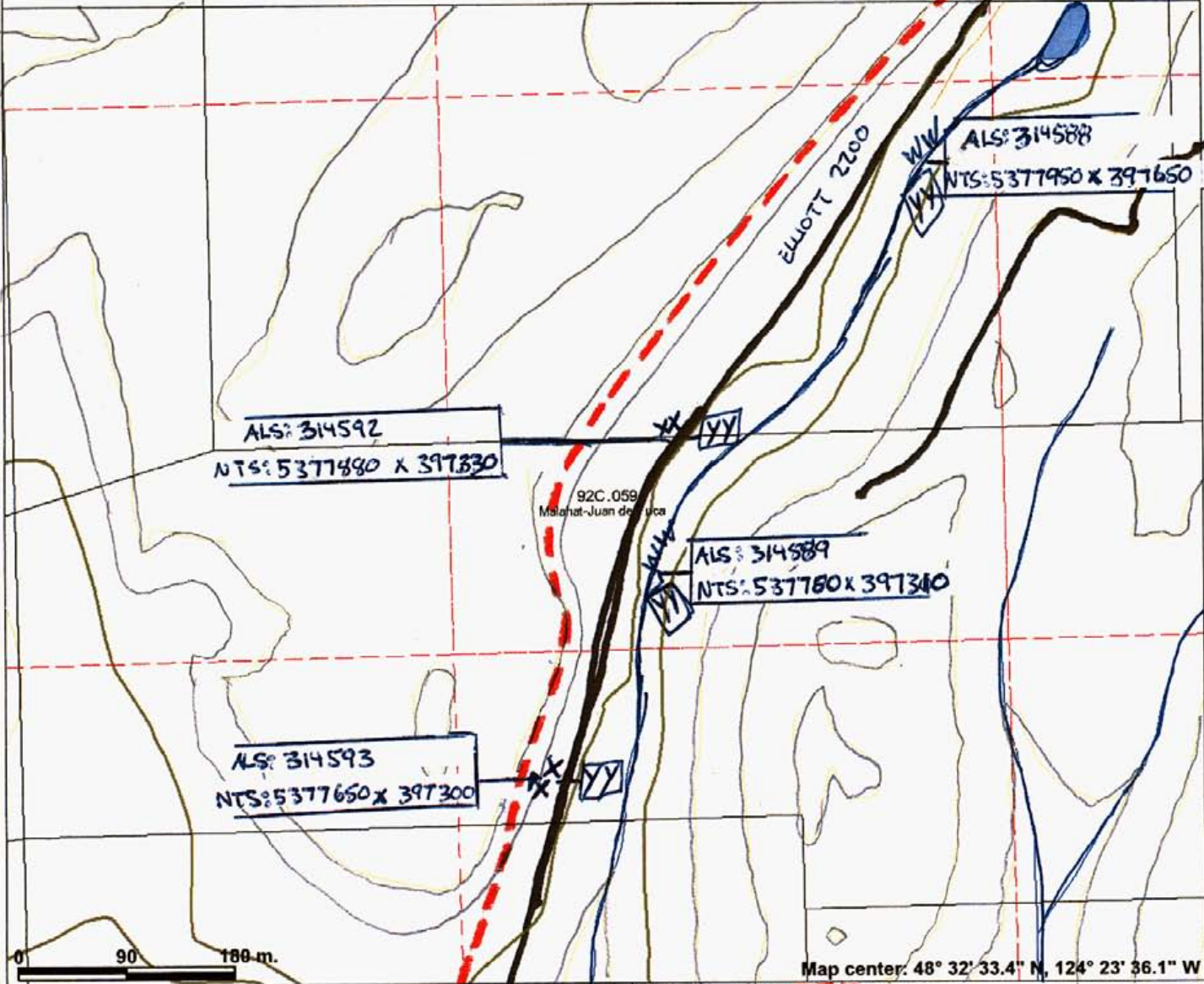
Notes: Yahu Fault  
 Rock Chip XX  
 GPS Pts Y-Y  
 Pictures ZZ

▲ ▲ = QUARTZ VEINS

# Le Baron Prospecting // Yahu Fault



- ### Legend
- Indian Reserves
  - National Parks
  - Parks
  - Mineral Titles Grid (LRDW)
  - Reserves (Mineral - LRDW Sites)
  - Placer Claim Designation
  - Placer Lease Designation
  - No Staking Reserve
  - Conditional Reserve
  - Release Required Reserve
  - Surface Restriction
  - Recreation Area
  - Others
  - Integrated Cadastral Fabric
  - BCGS Grid
  - Contours (TRIM)
    - Contour - Index
    - Contour - Index, Indefinite
    - Contour - Index, Depression
    - Contour - Index, Depression Indefinite
    - Contour - Intermediate
    - Contour - Intermediate, Indefinite
    - Contour - Intermediate, Depression
    - Contour - Intermediate, Depression Indefinite
  - Area of Exclusion
  - Area of Indefinite Contours
  - Annotation (1:20K)
  - Transportation - Points (TRIM)
  - Helipad
  - Transportation - Lines (TRIM)
    - Airfield
    - Airport
    - Atoll

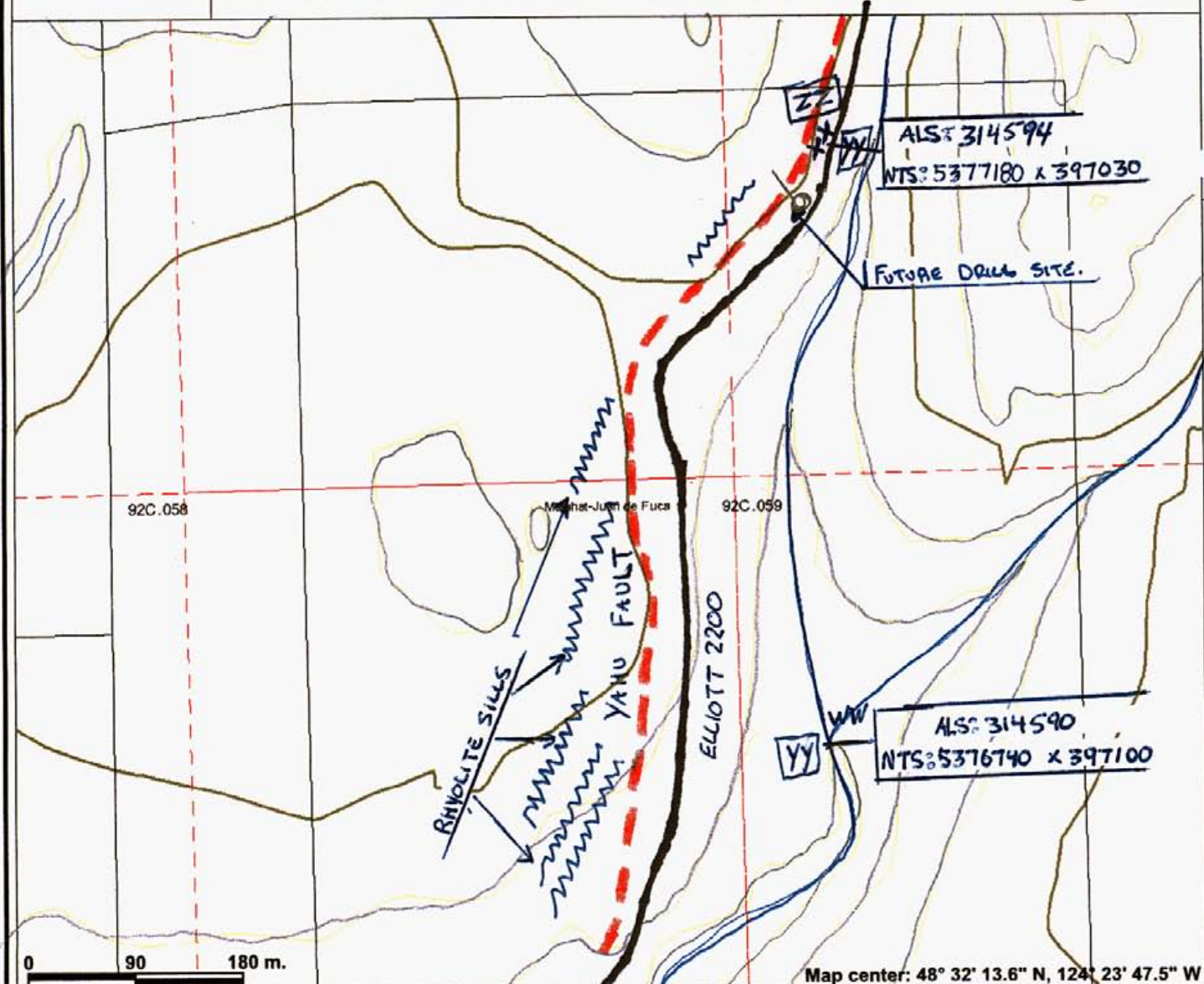


This map is a user generated static output from an internet mapping site and is for general reference only. Data layers that appear on this map may or may not be accurate, current, or otherwise reliable. THIS MAP IS NOT TO BE USED FOR NAVIGATION.

Notes: Yahu Fault  
GPS Pts: Y-Y  
Rock Chip XX  
Pictures ZZ  
STREAM SEDIMENT: WW

Scale: 1:5,000

# Le Baron Prospecting // Yahu Fault



## Legend

- Indian Reserves
- National Parks
- Parks
- Mineral Titles Grid (LRDW)
- Reserves (Mineral - LRDW Sites)
- Placer Claim Designation
- Placer Lease Designation
- No Staking Reserve
- Conditional Reserve
- Release Required Reserve
- Surface Restriction
- Recreation Area
- Others
- Integrated Cadastral Fabric
- BCGS Grid
- Contours (TRIM)
- Contour - Index
- Contour - Index.Indefinite
- Contour - Index.Depression
- Contour - Index.Depression Indefinite
- Contour - Intermediate
- Contour - Intermediate.Indefinite
- Contour - Intermediate.Depression
- Contour - Intermediate.Depression Indefinite
- Area of Exclusion
- Area of Indefinite Contours
- Annotation (1:20K)
- Transportation - Points (TRIM)
- Helipad
- Transportation - Lines (TRIM)
- Airfield
- Airport
- Altitude

Scale: 1:5,000

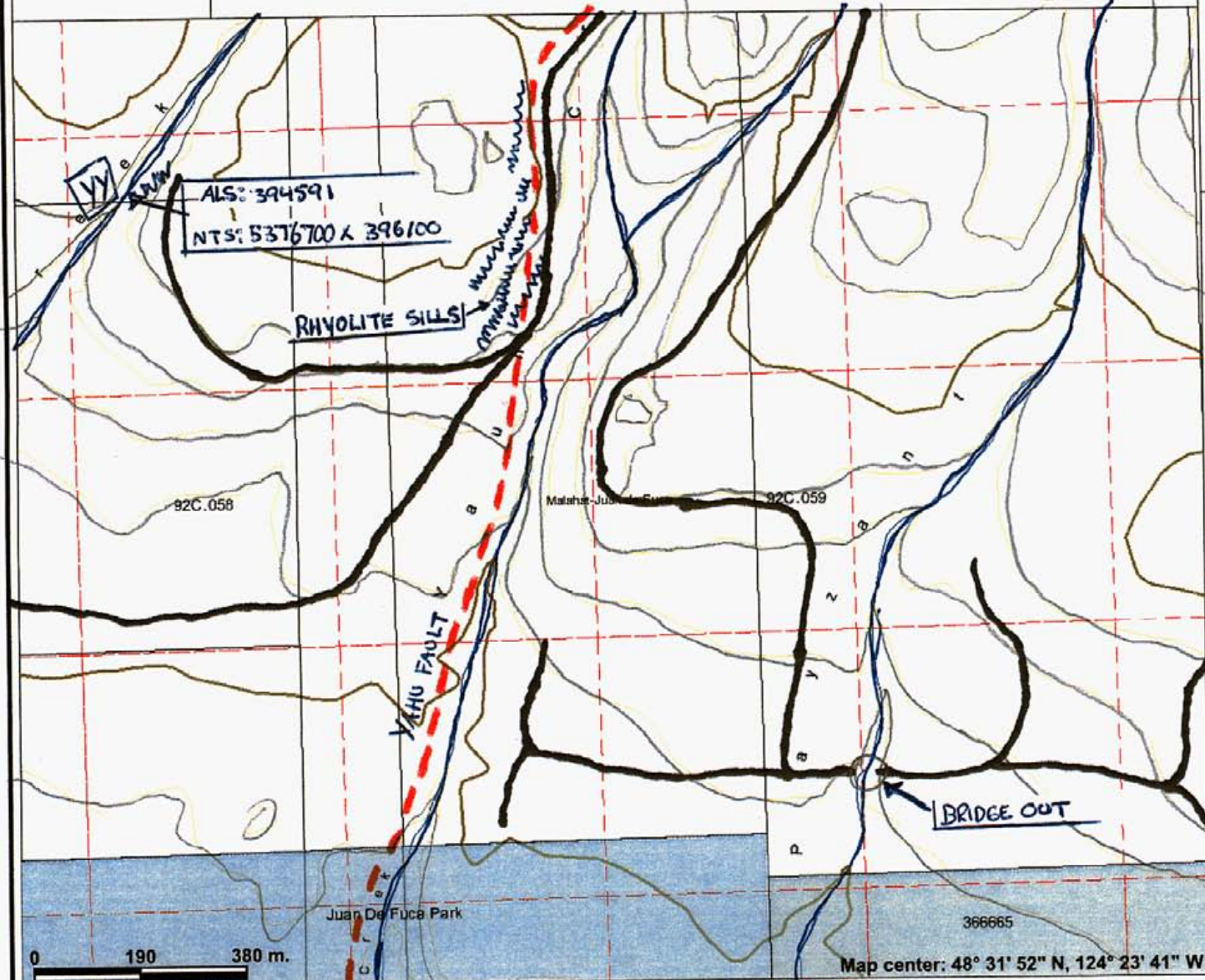
0 90 180 m.

Map center: 48° 32' 13.6" N, 124° 23' 47.5" W

This map is a user generated static output from an Internet mapping site and is for general reference only. Data layers that appear on this map may or may not be accurate, current, or otherwise reliable. THIS MAP IS NOT TO BE USED FOR NAVIGATION.

Notes: Yahu Fault  
 GPS Pts Y-Y  
 Rock Chip XX // SEDIMENT = W.W.  
 Pictures ZZ

# Le Baron Prospecting // Yahu Fault



## Legend

- Indian Reserves
- National Parks
- Parks
- Mineral Titles Grid (LRDW)
- Reserves (Mineral - LRDW Sites)
- Placer Claim Designation
- Placer Lease Designation
- No Staking Reserve
- Conditional Reserve
- Release Required Reserve
- Surface Restriction
- Recreation Area
- Others
- Integrated Cadastral Fabric
- BCGS Grid
- Contours (TRIM)
- Contour - Index
- Contour - Index.Indefinite
- Contour - Index.Depression
- Contour - Index.Depression Indefinite
- Contour - Intermediate
- Contour - Intermediate.Indefinite
- Contour - Intermediate.Depression
- Contour - Intermediate.Depression Indefinite
- Area of Exclusion
- Area of Indefinite Contours
- Annotation (1:20K)
- Landform - Points (TRIM)
- Slide
- Landform - Lines (TRIM)
- Cliff
- Crater - Volcanic

Scale: 1:10,636

This map is a user generated static output from an Internet mapping site and is for general reference only. Data layers that appear on this map may or may not be accurate, current, or otherwise reliable. THIS MAP IS NOT TO BE USED FOR NAVIGATION.

Notes: Yahu Fault  
GPS Pts Y-Y  
Stream Sediment Sample Pts WW



# ALS Chemex

EXCELLENCE IN ANALYTICAL CHEMISTRY

ALS Canada Ltd

212 Brooksbank Avenue  
North Vancouver BC V7J 2C1

Phone 604 984 0221 Fax 604 984 0218 www.alschemex.com

To LE BARON PROSPECTING  
9298 CHESTNUT RD.  
CHEMAINUS BC V0R 1K5

Page 1 of 1

INVOICE NUMBER 1483076

| BILLING INFORMATION |                       |
|---------------------|-----------------------|
| Certificate:        | <b>VA06124410</b>     |
| Sample Type         | <b>Rock</b>           |
| Account:            | <b>LEBPRO</b>         |
| Date                | <b>15-DEC-2006</b>    |
| Project             |                       |
| P.O. No.:           |                       |
| Quote               |                       |
| Terms:              | <b>Due on Receipt</b> |
| Comments            | <b>C3</b>             |

| QUANTITY | CODE      | ANALYSED FOR DESCRIPTION                              | UNIT  | TOTAL  |
|----------|-----------|---|-------|--------|
|          |           |   | PRICE |        |
| 1        | BAT-01    | Administration Fee                                    | 30.00 | 30.00  |
| 8        | ME-ICP61m | ME-ICP61 plus Hg by CV-AA Rush Charges X 2.0          | 40.00 | 320.00 |
| 8        | LOG-22    | Sample logn - Rcd w/o BarCode Rush Charges X 2.0      | 2.00  | 16.00  |
| 8        | PUL-31    | Pulverize split to 85% <75 um Rush Charges X 2.0      | 7.00  | 56.00  |
| 8        | PGM-ICP23 | Pl. Pd. Au 30g FA ICP Rush Charges X 2.0              | 32.50 | 260.00 |
| 1        | Au-GRA21  | Au 30g FA-GRAV finish                                 | 17.00 | 17.00  |
| 1        | ASY-4ACID | Assay four acid digestion                             | 7.00  | 7.00   |
| 1        | Cu-AA62   | Ore grade Cu - four acid / AAS                        | 4.00  | 4.00   |
| 1.20     | CRU-31    | Weight Charge (kg) - Fine crushing - 70% <2mm Rush Ct | 0.80  | 0.96   |
| 4        | CRU-31    | Fine crushing - 70% <2mm Rush Charges X 2.0           | 4.50  | 18.00  |

SUBTOTAL (CAD) \$ 728.96

R100938885 GST \$ 43.74

TOTAL PAYABLE (CAD) \$ 772.70

To LE BARON PROSPECTING  
ATTN: S. PHILLIPS  
GENERAL DELIVERY  
PORT RENFREW BC

Payment may be made by Cheque or Bank Transfer

|                  |                      |
|------------------|----------------------|
| Beneficiary Name | ALS Canada Ltd       |
| Bank             | Royal Bank of Canada |
| SWIFT            | ROYCCAT2             |
| Address          | Vancouver, BC, CAN   |
| Account          | 003-00010-1001098    |

# PAID

Please Remit Payments To

## ALS Chemex

212 Brooksbank Avenue  
North Vancouver BC V7J 2C1



# ALS Chemex

EXCELLENCE IN ANALYTICAL CHEMISTRY

ALS Canada Ltd

212 Brooksbank Avenue

North Vancouver BC V7J 2C1

Phone: 604 984 0221 Fax: 604 984 0218 www.alschemex.com

LE BARON PROSPECTING  
9298 CHESTNUT RD.  
CHEMAINUS BC V0R 1K5

Page: 1  
Finalized Date: 15-DEC-2006  
This copy reported on 1-FEB-2007  
Account: LEBPRO

## CERTIFICATE VA06124410

Project:

P.O. No.:

This report is for 8 Rock samples submitted to our lab in Vancouver, BC, Canada on 7-DEC-2006.

The following have access to data associated with this certificate:

S. PHILLIPS

## SAMPLE PREPARATION

| ALS CODE | DESCRIPTION                    |
|----------|--------------------------------|
| WEI-21   | Received Sample Weight         |
| LOG-22   | Sample login - Rod w/o BarCode |
| PUL-31   | Pulverize split to 85% <75 um  |
| CRU-31   | Fine crushing - 70% <2mm       |

## ANALYTICAL PROCEDURES

| ALS CODE  | DESCRIPTION                    | INSTRUMENT |
|-----------|--------------------------------|------------|
| ME-ICP61  | 27 element four acid ICP-AES   | ICP-AES    |
| Hg-CV41   | Trace Hg - cold vapor/AAS      | FIMS       |
| Cu-AA62   | Ore grade Cu - four acid / AAS | AAS        |
| PGM-ICP23 | Pt, Pd, Au 30g FA ICP          | ICP-AES    |
| Au-GRA21  | Au 30g FA-GRAV finish          | WST-SIM    |

To: LE BARON PROSPECTING  
ATTN: S. PHILLIPS  
GENERAL DELIVERY  
PORT RENFREW BC

This is the Final Report and supersedes any preliminary report with this certificate number. Results apply to samples as submitted. All pages of this report have been checked and approved for release.

Signature:

Keith Rogers, Executive Manager Vancouver Laboratory



# ALS Chemex

EXCELLENCE IN ANALYTICAL CHEMISTRY

ALS Canada Ltd.

212 Brooksbank Avenue

North Vancouver BC V7J 2C1

Phone: 604 984 0221 Fax: 604 984 0218 www.alschemex.com

THE BARON PROSPECTING  
298 CHESTNUT RD.  
CHEMAINUS BC V0R 1K5

Page: 2 - A

Total # Pa: 2 (A - C)

Finalized Date: 13-DEC-2006

Account: LEBPRO

## CERTIFICATE OF ANALYSIS VA06124410

| Sample Description             | Method<br>Analyte<br>Units<br>LOR | WEI-21  | PGM-ICP23 | PGM-ICP23 | PGM-ICP23 | AU-GR21 | ME-ICP61 | ME-ICP61 | ME-ICP61 | ME-ICP61 | ME-ICP61 | ME-ICP61 | ME-ICP61 | ME-ICP61 | ME-ICP61 | ME-ICP61 |
|--------------------------------|-----------------------------------|---------|-----------|-----------|-----------|---------|----------|----------|----------|----------|----------|----------|----------|----------|----------|----------|
|                                |                                   | Revd Wt | Au        | Pt        | Pd        | Au      | Ag       | Al       | As       | Ba       | Be       | Bi       | Ca       | Cd       | Co       | Cr       |
|                                |                                   | kg      | ppm       | ppm       | ppm       | ppm     | ppm      | %        | ppm      | ppm      | ppm      | ppm      | %        | ppm      | ppm      | ppm      |
|                                |                                   | 0.01    | 0.001     | 0.005     | 0.001     | 0.05    | 0.5      | 0.01     | 5        | 10       | 0.5      | 2        | 0.01     | 0.5      | 1        | 1        |
| B-314588 - SEDIMENT            |                                   | 0.06    | 0.001     | <0.005    | <0.001    |         | <0.5     | 4.77     | 10       | 320      | 0.7      | <2       | 1.03     | <0.5     | 4        | 42       |
| B-314589 - SEDIMENT            |                                   | 0.38    | 0.025     | <0.005    | <0.001    |         | <0.5     | 3.55     | 12       | 230      | 0.5      | <2       | 0.57     | <0.5     | 3        | 29       |
| B-314590 - SEDIMENT            |                                   | 0.16    | 0.325     | <0.005    | <0.001    |         | <0.5     | 5.31     | 9        | 300      | 0.6      | <2       | 1.74     | <0.5     | 5        | 98       |
| B-314591 - SEDIMENT            |                                   | 0.58    | 0.001     | <0.005    | <0.001    |         | <0.5     | 4.70     | <5       | 340      | 0.6      | <2       | 0.99     | <0.5     | 4        | 38       |
| B-314592 - ROCK CHIP           |                                   | 0.28    | 0.083     | <0.005    | <0.001    |         | <0.5     | 7.70     | 27       | 880      | 1.1      | <2       | 2.57     | 0.5      | 23       | 63       |
| B-314593 - ROCK CHIP           |                                   | 0.26    | 0.007     | <0.005    | <0.001    |         | <0.5     | 1.80     | 9        | 200      | <0.5     | <2       | 1.29     | <0.5     | 3        | 35       |
| B-314594 - Blow Hole Rock chip |                                   | 0.26    | >10.0     | <0.005    | 0.003     | 45.0    | 98.1     | 2.31     | 23       | 150      | <0.5     | 2        | 0.06     | 3.4      | 2        | 33       |
| B-314595 - Rock chip           |                                   | 0.40    | 0.141     | <0.005    | 0.001     |         | <0.5     | 8.10     | 12       | 690      | 1.0      | <2       | 2.18     | <0.5     | 16       | 102      |





# ALS Chemex

**EXCELLENCE IN ANALYTICAL CHEMISTRY**  
ALS Canada Ltd

212 Brooksbank Avenue  
North Vancouver BC V7J 2C1  
Phone: 604 984 0221 Fax: 604 984 0218 www.alschemex.com

LE BARON PROSPECTING  
9298 CHESTNUT RD.  
CHEMAINUS BC V0R 1K5

Page: 2 - B  
Total # F : 2 (A - C)  
Finalized Date: 15-DEC-2006  
Account: LEBPRO

## CERTIFICATE OF ANALYSIS VA06124410

| Sample Description | Method<br>Analyte<br>Units<br>LDR | ME-ICP61  | ME-ICP61 | Hg-CV41   | ME-ICP61 | ME-ICP61 | ME-ICP61  | ME-ICP61  | ME-ICP61 | ME-ICP61  | ME-ICP61 | ME-ICP61  | ME-ICP61 | ME-ICP61  | ME-ICP61  |         |
|--------------------|-----------------------------------|-----------|----------|-----------|----------|----------|-----------|-----------|----------|-----------|----------|-----------|----------|-----------|-----------|---------|
|                    |                                   | Cu<br>ppm | Fe<br>%  | Hg<br>ppm | K<br>%   | Mg<br>%  | Mn<br>ppm | Mo<br>ppm | Na<br>%  | Ni<br>ppm | P<br>ppm | Pb<br>ppm | S<br>%   | Sb<br>ppm | Sr<br>ppm | Ti<br>% |
|                    |                                   | 1         | 0.01     | 0.01      | 0.01     | 0.01     | 5         | 1         | 0.01     | 1         | 10       | 2         | 0.01     | 5         | 1         | 0.01    |
| B-314588           |                                   | 35        | 2.77     | 0.02      | 0.63     | 0.81     | 735       | 2         | 1.31     | 16        | 120      | 9         | 0.03     | <5        | 197       | 0.51    |
| B-314589           |                                   | 16        | 1.84     | 0.01      | 0.48     | 0.60     | 571       | <1        | 0.86     | 12        | 50       | 4         | 0.02     | <5        | 130       | 0.19    |
| B-314590           |                                   | 20        | 4.24     | 0.01      | 0.56     | 0.82     | 2350      | 1         | 1.46     | 15        | 80       | 4         | 0.02     | 5         | 260       | 1.37    |
| B-314581           |                                   | 10        | 2.52     | 0.01      | 0.68     | 0.83     | 559       | <1        | 1.16     | 12        | 100      | 5         | 0.01     | <5        | 190       | 0.34    |
| B-314592           |                                   | 94        | 4.01     | <0.01     | 3.10     | 1.34     | 749       | 1         | 1.49     | 68        | 680      | 15        | 0.48     | 5         | 200       | 0.27    |
| B-314593           |                                   | 14        | 1.40     | <0.01     | 0.57     | 0.37     | 295       | 1         | 0.32     | 14        | 190      | 4         | 0.22     | <5        | 74        | 0.09    |
| B-314594           |                                   | >10000    | 5.01     | 0.46      | 1.01     | 0.46     | 155       | 13        | 0.06     | 11        | 170      | 396       | 2.04     | 33        | 9         | 0.13    |
| B-314595           |                                   | 113       | 4.76     | 0.01      | 1.65     | 1.66     | 709       | 1         | 2.19     | 43        | 730      | 12        | 0.10     | <5        | 332       | 0.51    |



# ALS Chemex

EXCELLENCE IN ANALYTICAL CHEMISTRY

ALS Canada Ltd

212 Brooksbank Avenue  
North Vancouver BC V7J 2C1

Phone: 604 984 0221 Fax: 604 984 0218 www.alschemex.com

LE BARON PROSPECTING  
9298 CHESTNUT RD.  
CHEMAINUS BC V0R 1K5

Page: 2 - C

Total # Pages: 2 (A - C)

Finalized Date: 15-DEC-2006

Account: LEBPRO

## CERTIFICATE OF ANALYSIS VA06124410

| Sample Description | Method<br>Analyte<br>Units<br>LOL | ME-ICP61      | ME-ICP61       | ME-ICP61       | Cu-AA62         |
|--------------------|-----------------------------------|---------------|----------------|----------------|-----------------|
|                    |                                   | V<br>ppm<br>1 | W<br>ppm<br>10 | Zn<br>ppm<br>2 | Cu<br>%<br>0.01 |
| B-314588           |                                   | 76            | <10            | 83             |                 |
| B-314589           |                                   | 52            | <10            | 35             |                 |
| B-314590           |                                   | 100           | <10            | 62             |                 |
| B-314591           |                                   | 79            | <10            | 42             |                 |
| B-314592           |                                   | 126           | <10            | 160            |                 |
| B-314593           |                                   | 36            | <10            | 31             |                 |
| B-314594           |                                   | 50            | <10            | 746            | 2.90            |
| B-314595           |                                   | 167           | <10            | 99             |                 |