

2006 Assessment Report

Takla - Redton Property

Claims CS001 - 128, HS001 - 135, EXT001-003,
King, Twin05, Twin 0502, HAL 1, Min 1, Min 2.

Field Evaluation Report on Porphyry Copper Deposit Targets

Omineca Mining Division

NTS 93N/3,6,7,10,11

Claim Owners: Redton Resources Inc.

Claim Operators: Geoinformatics Exploration Inc.

Report By

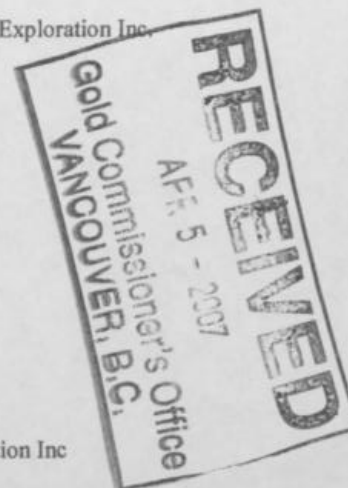
Tony Worth

Gerry Bidwell

March 2007

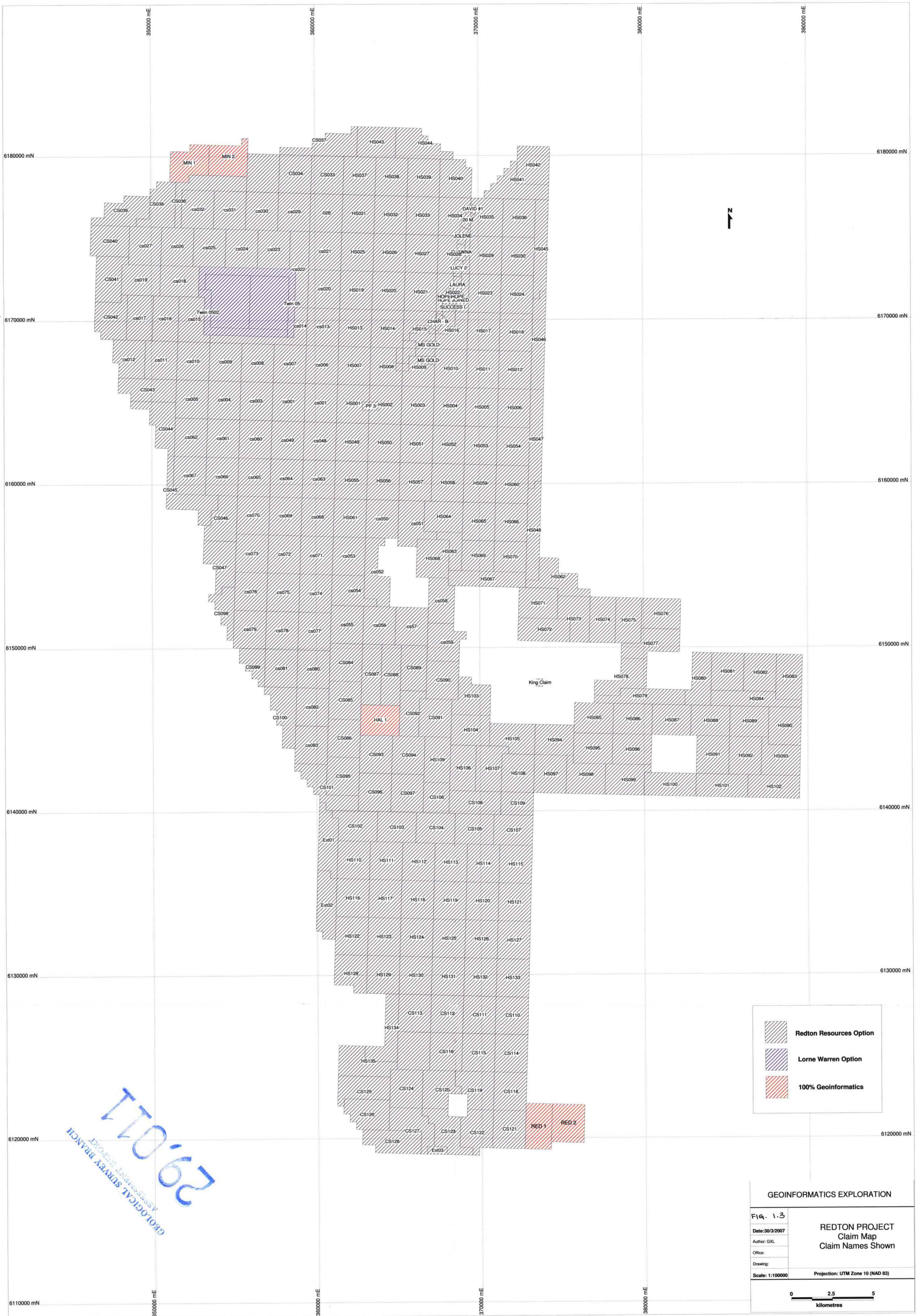
Geoinformatics Exploration Inc

Suite 304, 700 West Pender Street
Vancouver, British Columbia, Canada
V6C 1G8



GEOLOGICAL SURVEY BRANCH
ASST. COM. GEOL. BR. 1111
1111

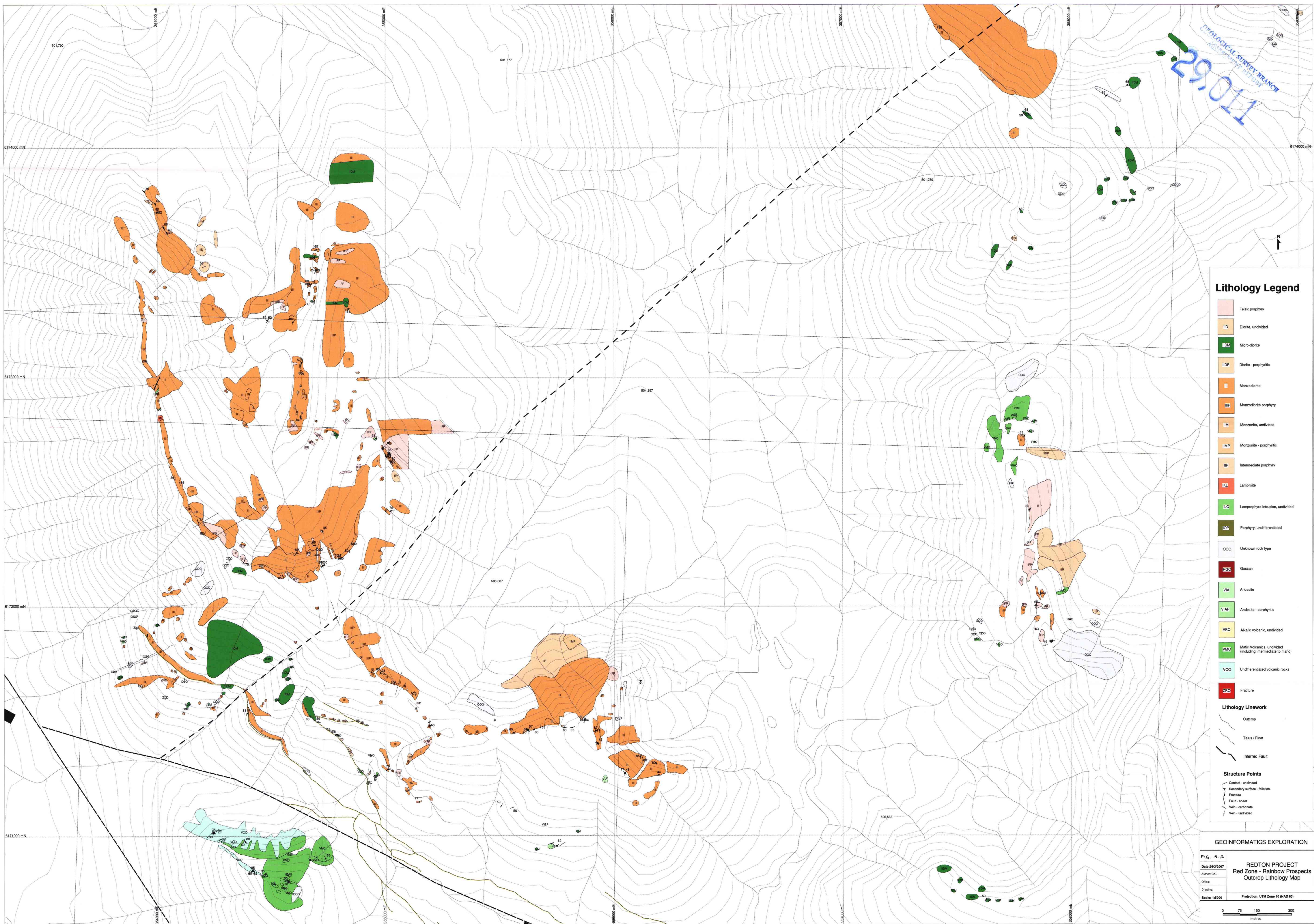
29011
11014



	Redton Resources Option
	Lorne Warren Option
	100% Geoinformatics

GEOINFORMATICS EXPLORATION	
Fig. 1.3	REDTON PROJECT Claim Map Claim Names Shown
Date: 30/3/2007	
Author: GXL	
Office:	
Drawing:	
Scale: 1:100000	Projection: UTM Zone 10 (NAD 83)

29.01.14
 GEOLOGICAL SURVEY BRANCH
 PROJECT: LORNE WARREN BRANCH

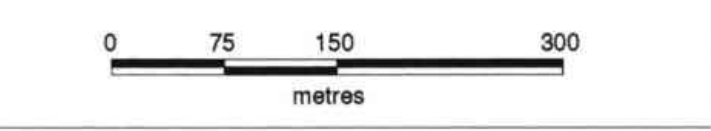


Lithology Legend

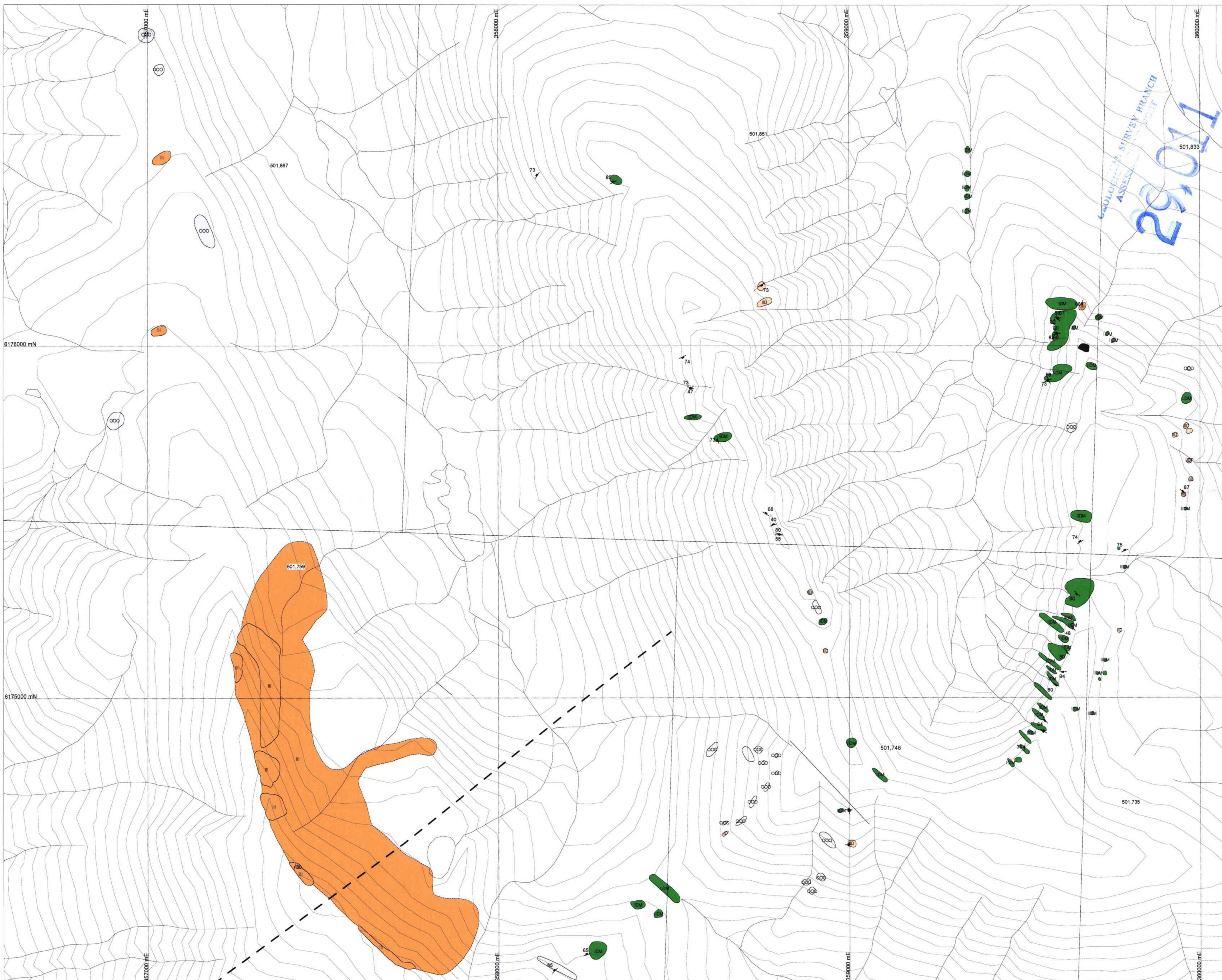
- Felsic porphyry
 - ID Diorite, undivided
 - IDM Micro-diorite
 - IDOP Diorite - porphyritic
 - II Monzonite
 - IIP Monzonite porphyry
 - IM Monzonite, undivided
 - IMP Monzonite - porphyritic
 - IP Intermediate porphyry
 - LMP Lamproite
 - LO Lamprophyre intrusion, undivided
 - P Porphyry, undifferentiated
 - OOO Unknown rock type
 - G Gossan
 - VIA Andesite
 - VIAP Andesite - porphyritic
 - VVO Alkalic volcanic, undivided
 - VMO Mafic Volcanics, undivided (including intermediate to mafic)
 - VOO Undifferentiated volcanic rocks
 - F Fracture
- Lithology Linework**
- Outcrop
 - Talus / Float
 - Inferred Fault
- Structure Points**
- Contact - undivided
 - Secondary surface - isolation
 - Fracture
 - Fault - shear
 - Vein - carbonate
 - Vein - undivided

GEOINFORMATICS EXPLORATION

FIG. 5.2
 Date: 28/3/2007
 Author: GKL
 Office:
 Drawing:
 Scale: 1:5000
 Projection: UTM Zone 10 (NAD 83)



REDTON PROJECT
 Red Zone - Rainbow Prospects
 Outcrop Lithology Map



Lithology Legend

- Felsic porphyry
- IID Diorite, undivided
- IIM Micro-diorite
- IIP Diorite - porphyritic
- III Monzodiorite
- IIIP Monzodiorite porphyry
- IIM Monzonite, undivided
- IIIMP Monzonite - porphyritic
- IIP Intermediate porphyry
- IKL Lamproite
- ILO Lamprophyre intrusion, undivided
- IOP Porphyry, undifferentiated
- OOO Unknown rock type
- RGC Gossan
- VIA Unknown rock type
- VIAP Andesite - porphyritic
- VKO Alkalic volcanic, undivided
- VMO Mafic Volcanics, undivided (including intermediate to mafic)
- VOO Undifferentiated volcanic rocks
- ZRC Fracture

Lithology Linework

- Outcrop
- Talus / Float

Structure Points

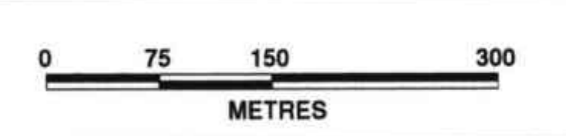
- Contact - undivided
- Secondary surface - foliation
- Fracture
- Fault - shear
- Vein - carbonate
- Vein - undivided

GEOINFORMATICS EXPLORATION

FIG. 3.3
 Date: 26/3/2007
 Author: GXL
 Office:
 Drawing:
 Scale: 1:5000

REDTON PROJECT
 Tak Prospect
 Outcrop Lithology Map

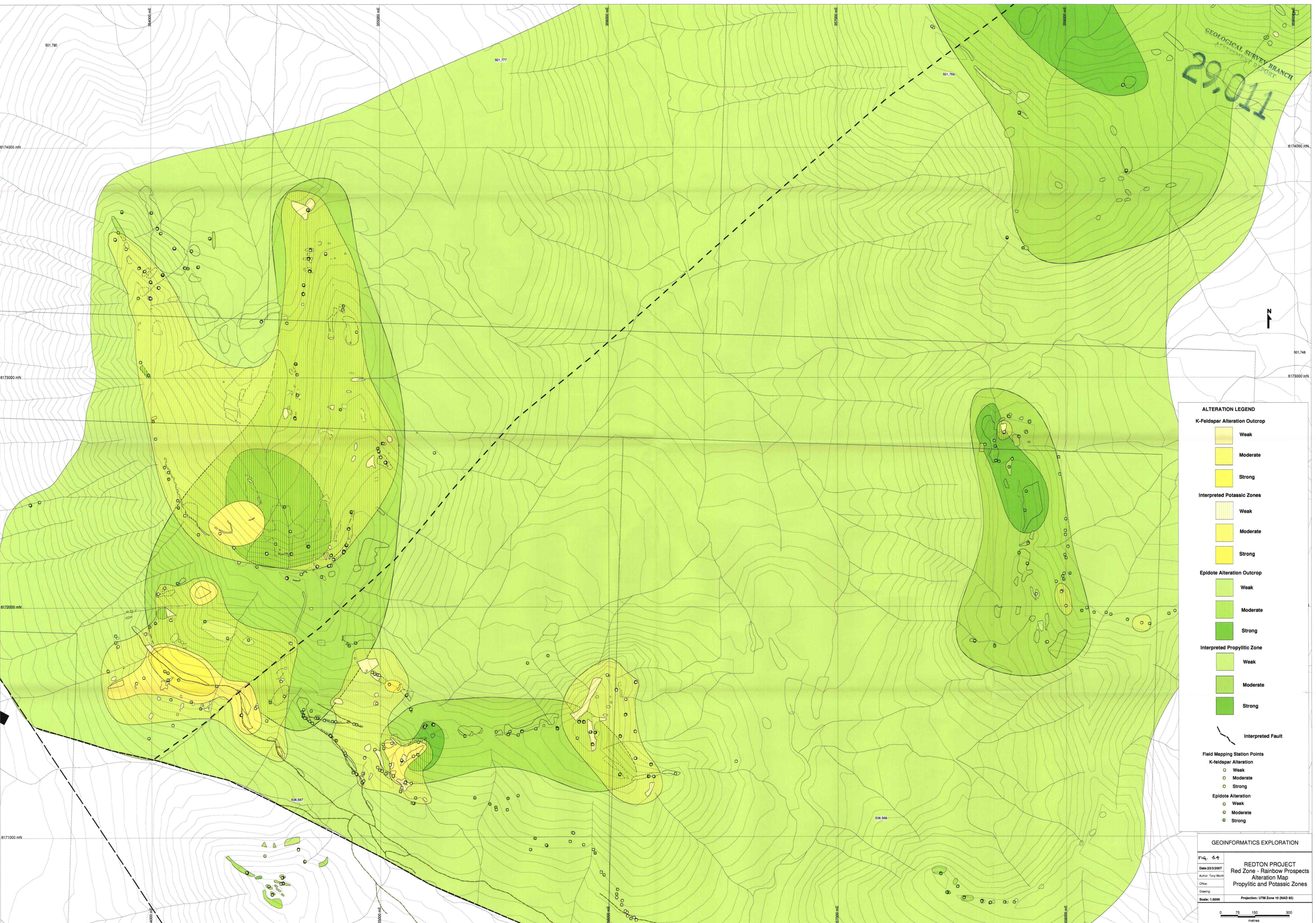
Projection: UTM Zone 10 (NAD 83)



29,011

GEOLOGICAL SURVEY BRANCH
ASSESSMENT REPORT

29,011
GEOLOGICAL SURVEY BRANCH
ASSESSMENT REPORT



ALTERATION LEGEND

K-Feldspar Alteration Outcrop

- Weak
- Moderate
- Strong

Interpreted Potassic Zones

- Weak
- Moderate
- Strong

Epidote Alteration Outcrop

- Weak
- Moderate
- Strong

Interpreted Propylitic Zone

- Weak
- Moderate
- Strong

Interpreted Fault

Field Mapping Station Points

K-feldspar Alteration

- Weak
- Moderate
- Strong

Epidote Alteration

- Weak
- Moderate
- Strong

GEOINFORMATICS EXPLORATION

FIG. 5-4

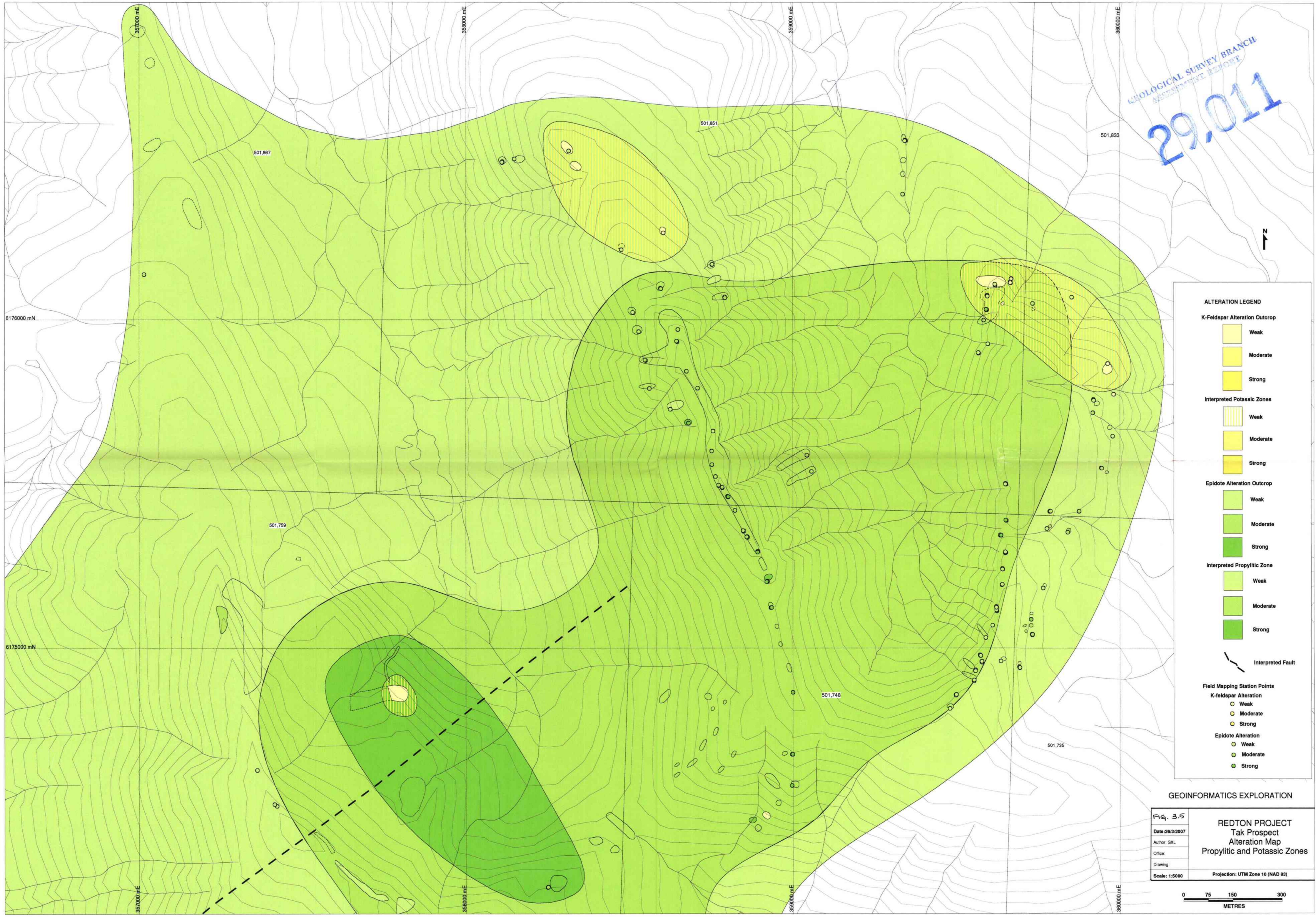
Date: 23/3/2007
Author: Tony Worth
Office:
Drawing:
Scale: 1:5000

REDTON PROJECT
Red Zone - Rainbow Prospects
Alteration Map
Propylitic and Potassic Zones

Projection: UTM Zone 10 (NAD 83)

0 75 150 300 metres

GEOLOGICAL SURVEY BRANCH
 ASSESSMENT REPORT
 29,011



ALTERATION LEGEND

K-feldspar Alteration Outcrop

- Weak
- Moderate
- Strong

Interpreted Potassic Zones

- Weak
- Moderate
- Strong

Epidote Alteration Outcrop

- Weak
- Moderate
- Strong

Interpreted Propylitic Zone

- Weak
- Moderate
- Strong

Interpreted Fault

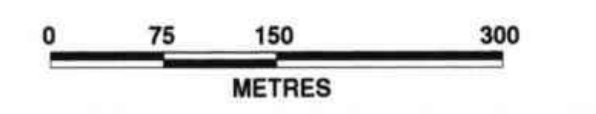
Field Mapping Station Points

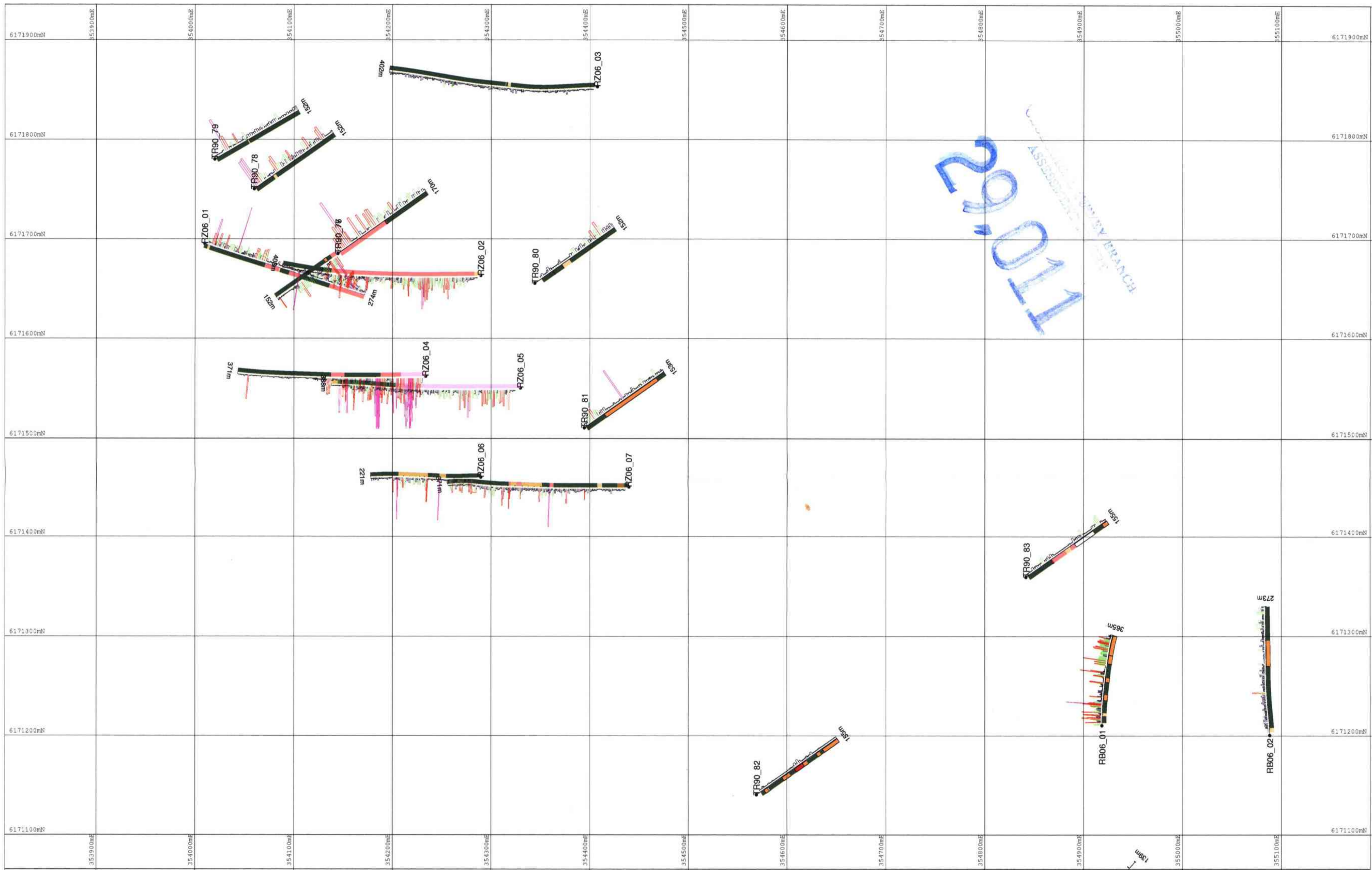
- K-feldspar Alteration**
 - Weak
 - Moderate
 - Strong
- Epidote Alteration**
 - Weak
 - Moderate
 - Strong

GEOINFORMATICS EXPLORATION

Fig. 3.5
 Date: 26/3/2007
 Author: GXL
 Office:
 Drawing:
 Scale: 1:5000
 Projection: UTM Zone 10 (NAD 83)

REDTON PROJECT
 Tak Prospect
 Alteration Map
 Propylitic and Potassic Zones





2011

Cu ppm Histogram

█	< 500
█	500 to 1000
█	1000 to 2000
█	2000 to 5000
█	5000

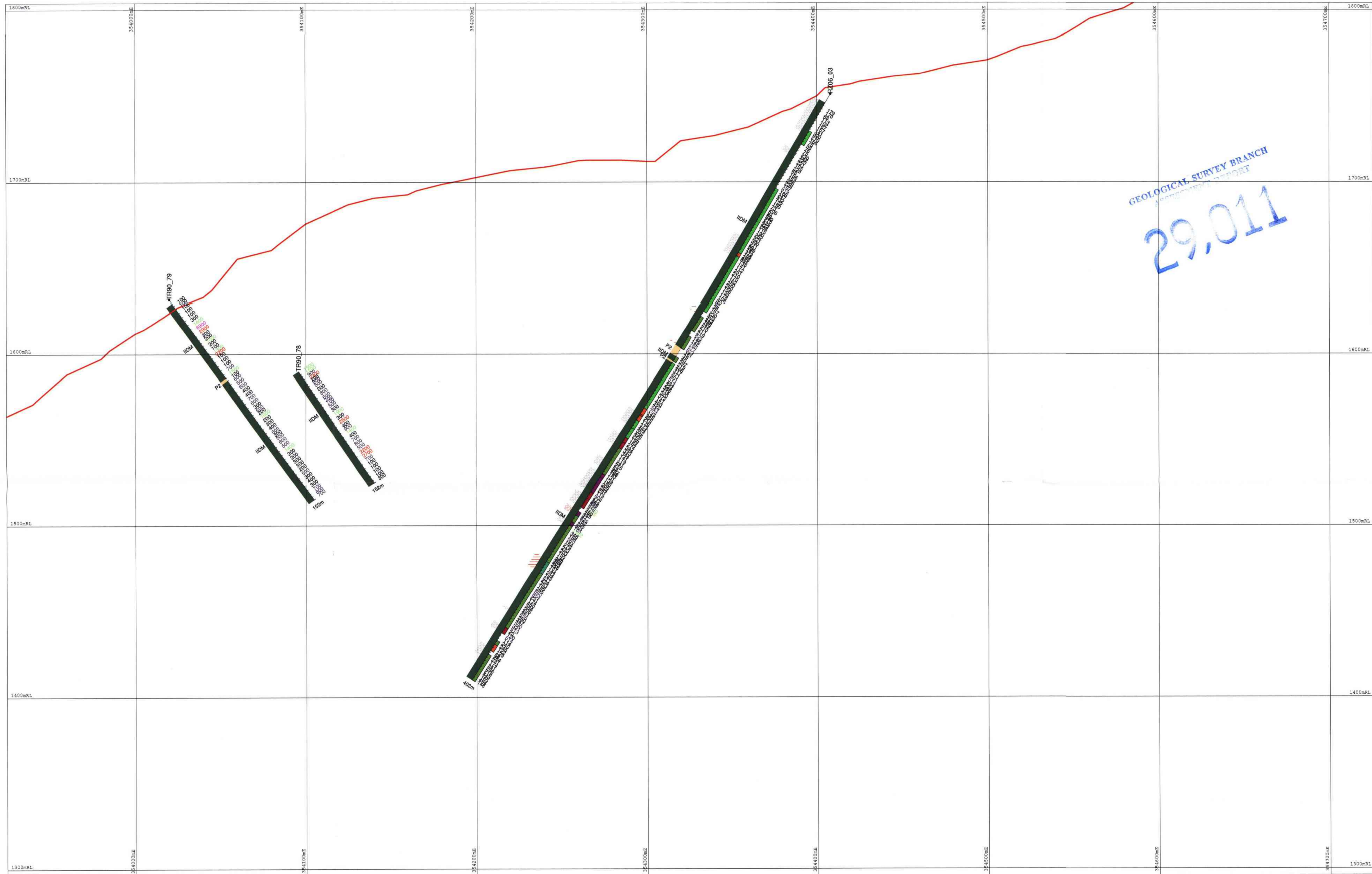
Lithology Legend

█	Micro-diorite
█	Crowded porphyry
█	Crowded porphyry - coarser phenos, less crowded
█	plag-large Kfspar porphyry
█	less crowded, large plagiopheno
█	dark matrix plagiopheno porphyry
█	undiff porphyry (from historic logs)
█	unknown rocktype
█	zfo

Scale	DATE	SHEET
1:2500	09/01/2006	1 of 1
	REF No.	FILE
	1	Red_zone_plot

0 100m

FIG. 4.2
Red Zone / Rainbow
Drill Hole Location Plan



GEOLOGICAL SURVEY BRANCH
 COMPETITIVE REPORT
 29,011

Structure Legend (left side of Drill trace)

	fault - strong intensity
	Fracture - strong intensity
	fault - moderate intensity
	Fracture - moderate intensity

Alteration Legend

	Chlorite-Kapaa-Phyllic		Potassic-Propylitic
	Albite		Phyllic
	Argillite		Phyllic-potassic
	Argillite-Phyllic		Propylitic
	Alkanet		Propylitic-potassic
	Albite		Propylitic-Phyllic
	Albite-Phyllic		Potassic
	Albite-Propylitic		Potassic-Argillite
	Albite-Propylitic-Phyllic		Potassic-Phyllic
			Potassic-Propylitic

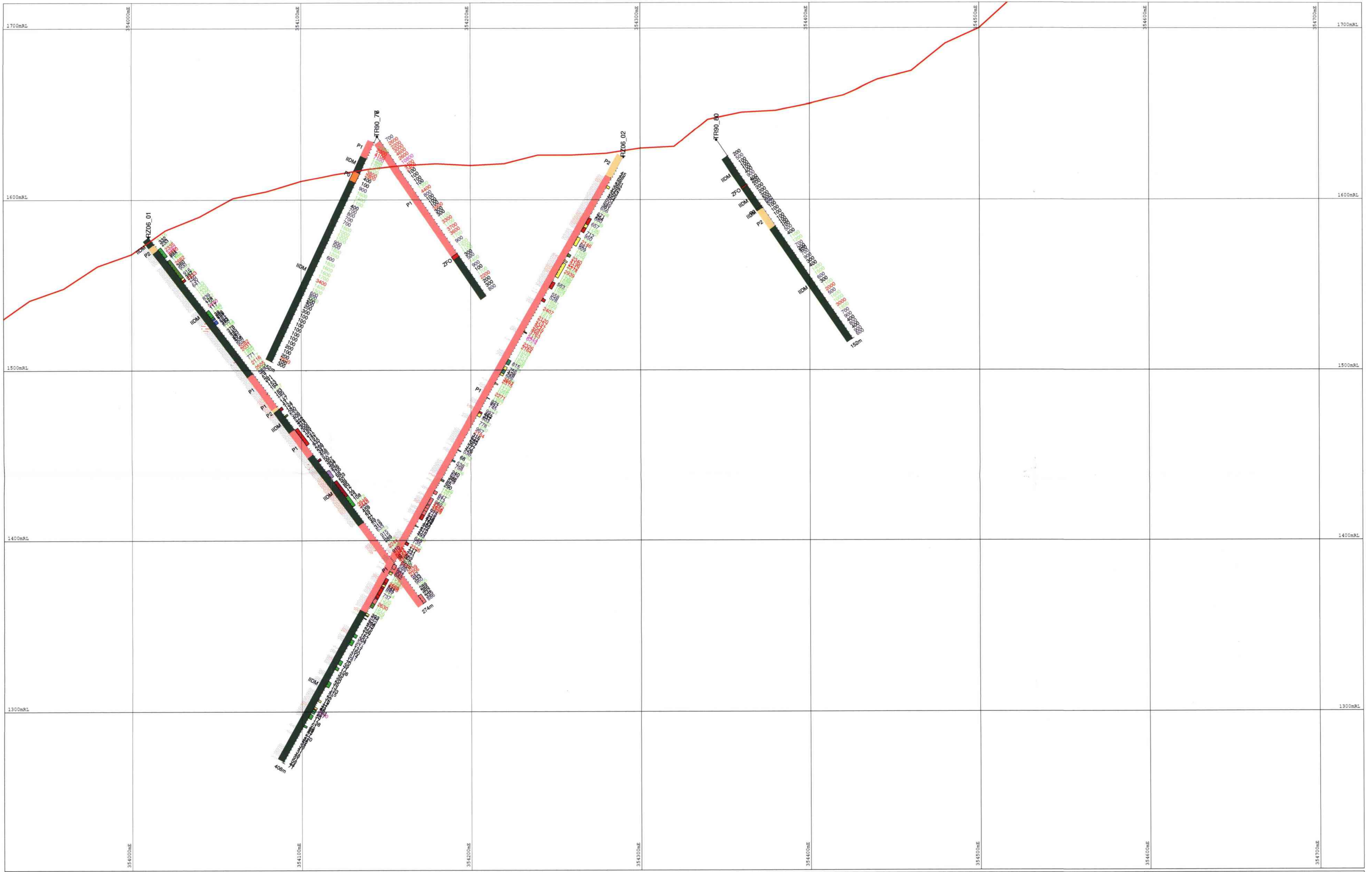
Lith Legend

	Micro-diorite		dark matrix plagioclase porphyry
	Cracked porphyry		undiff porphyry - from historic logs
	Cracked porphyry - coarsest phase, less cracked		unknown outcrop
	plagioclase K-feldspar porphyry		SPC
	less cracked, large plagioclase		

Scale 1:1000	DATE 05/12/2006	SHEET 1 of 1
	REF No. 1	FILE Sec_6171825N

Red Zone
 Drill Section 6171825mN
 FIG. 4.3

Geoinformatics Exploration



Structure Legend (left side of Drill trace)

	fault - strong intensity
	Fracture - strong intensity
	fault - moderate intensity
	Fracture - moderate intensity

Alteration Legend

	Albite		Chlorite-Tepal-Phyllite		Potassio-Propylite
	Amphibole		Carbonate		Phyllite
	Amphibole-Phyllite		Epidote-Phyllite		Phyllite-potassic
	Amphibole		Epidote-Pyrite		Propylite
	Albite		Potassic		Propylite-potassic
	Albite-Phyllite		Potassio-Amphibole		Propylite-Phyllite
	Albite-Propylite		Potassio-Phyllite		Altered
	Albite-Propylite-Phyllite		Potassio-Propylite		

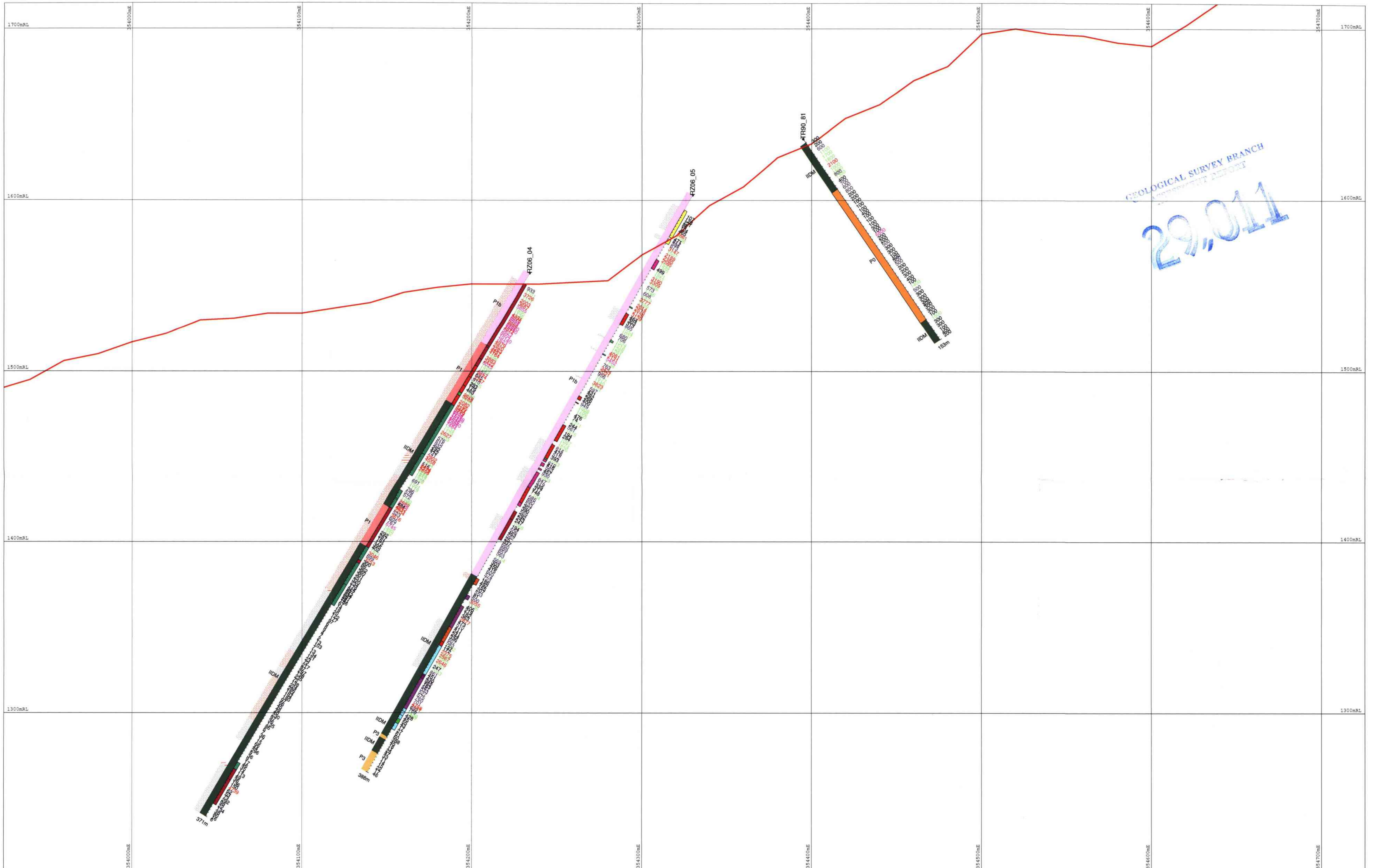
Lith Legend

	Micro-diorite		dark matrix clay glass porphyry
	Crushed porphyry		undrift porphyry (from historical logs)
	Crushed porphyry - narrow plume, less rounded		unknown prototype
	plagioclase K-feldspar porphyry		SPG
	less rounded, large plagioclase		

Scale 1:1000	DATE 05/12/2006	SHEET 1 of 1
	REF No. 1	FILE Sec_6171680N

Red Zone
Drill Section 6171680mN
Fig. 44

Geoinformatics Exploration



Structure Legend (left side of Drill trace)

	fault - strong intensity
	Fracture - strong intensity
	fault - moderate intensity
	Fracture - moderate intensity

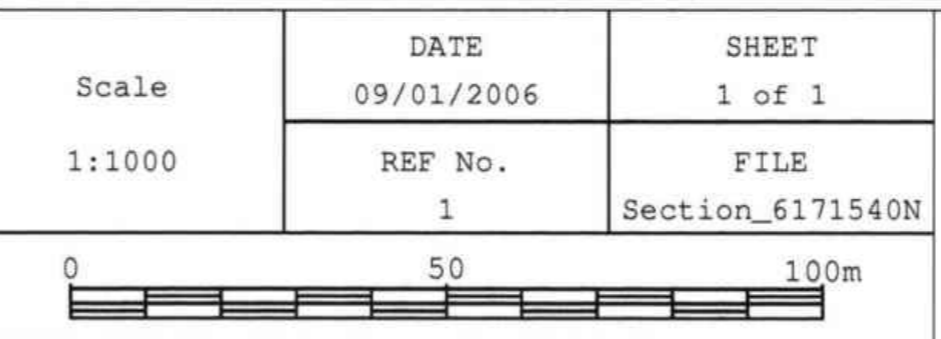
Alteration Legend

	Chlorite-epoxy-Phyllic		Potassic-Propylitic
	Albite		Phyllic
	Argillite		Phyllic-potassic
	Argillite-Phyllic		Propylitic
	bleached		Propylitic-potassic
	Biotite-Phyllic		Propylitic-Phyllic
	Biotite-Propylitic		Propylitic
	Biotite-Propylitic-Phyllic		Potassic-Argillite
			Potassic-Phyllic
			Potassic-Propylitic

Lith Legend

	Micro-schists		Dark matrix plagioclase porphyry
	Granodiorite		Weak matrix porphyry (from biotite zone)
	Granodiorite porphyry - coarse grained, less rounded		Unknown rocktype
	Granodiorite porphyry - coarse grained, less rounded		SPG
	plagioclase feldspar porphyry		
	less rounded, large plagioclase		

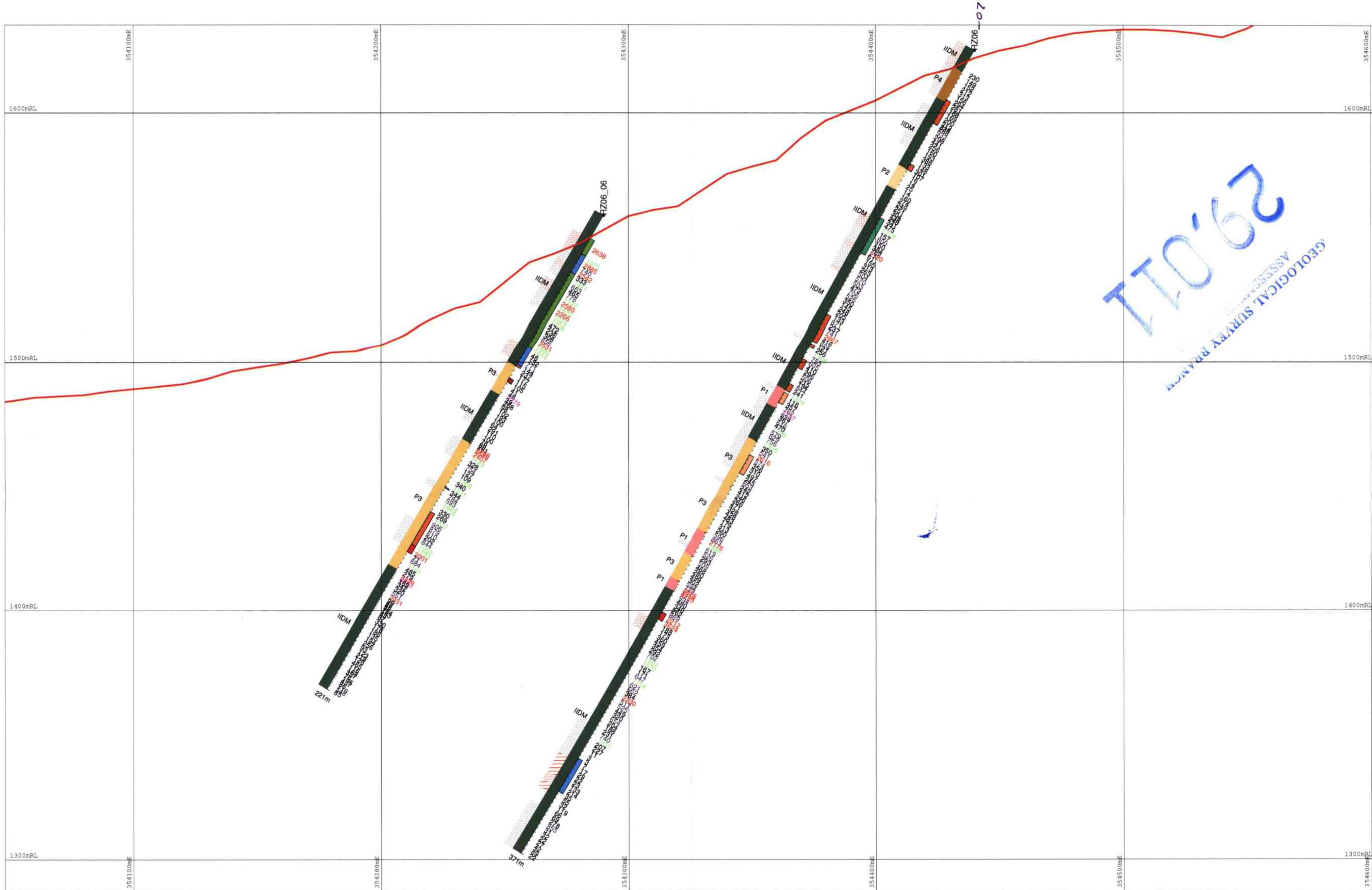
Scale	DATE	SHEET
1:1000	09/01/2006	1 of 1
	REF No.	FILE
	1	Section_6171540N



Red Zone
Drill Section 6171540mN

Fig. 4.5

Geoinformatics Exploration



29.011

GEOLOGICAL SURVEY BRANCH

Structure Legend (left side of Drill trace)

	fault - strong intensity
	Fracture - strong intensity
	fault - moderate intensity
	Fracture - moderate intensity

Alteration Legend

	Alkalis
	Argillite
	Argillite-Phyllite
	Blaschke
	Chlorite
	Chlorite-Phyllite
	Chlorite-Phyllite-Argillite
	Chlorite-Phyllite-Blaschke
	Chlorite-Phyllite-Blaschke-Argillite
	Chlorite-Phyllite-Blaschke-Argillite-Blaschke

	Chlorite-Argillite-Phyllite
	Chlorite-Argillite
	Chlorite-Phyllite
	Chlorite-Phyllite-Argillite
	Chlorite-Phyllite-Blaschke
	Chlorite-Phyllite-Blaschke-Argillite
	Chlorite-Phyllite-Blaschke-Argillite-Blaschke
	Chlorite-Phyllite-Blaschke-Argillite-Blaschke-Argillite
	Chlorite-Phyllite-Blaschke-Argillite-Blaschke-Argillite-Blaschke

Lith Legend

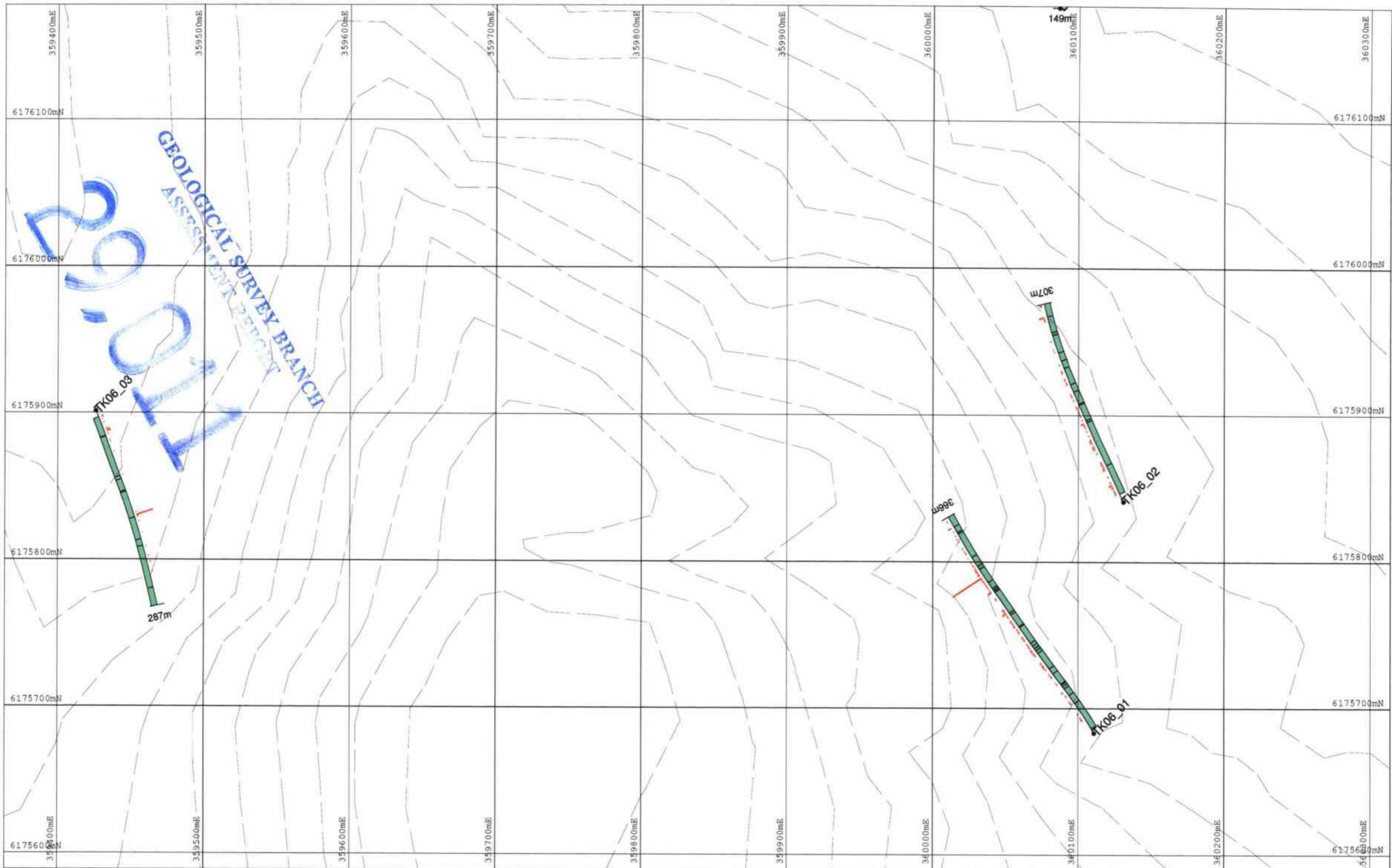
	Micro-schist
	Quartzite
	Quartzite - chlorite schist
	Quartzite - chlorite schist - low grade
	Quartzite - chlorite schist - low grade - low grade
	Quartzite - chlorite schist - low grade - low grade - low grade
	Quartzite - chlorite schist - low grade - low grade - low grade - low grade
	Quartzite - chlorite schist - low grade - low grade - low grade - low grade - low grade
	Quartzite - chlorite schist - low grade - low grade - low grade - low grade - low grade - low grade

Scale	DATE	SHEET
1:1000	09/01/2006	1 of 1
	REF No.	FILE
	1	Sec_6171450N

FIG. 4.6

Red Zone
Drill Section 6171450mN





Lith Legend

	Micro-diorite		dark matrix plagiopheno porphyry
	Crowded porphyry		undrift porphyry (from historic logs)
	Crowded porphyry - coarser phenos, less crowded		unknown rock type
	plagioclase K-feldspar porphyry		Fault zone
	less crowded, large plagioclase		

FIG. 4.7

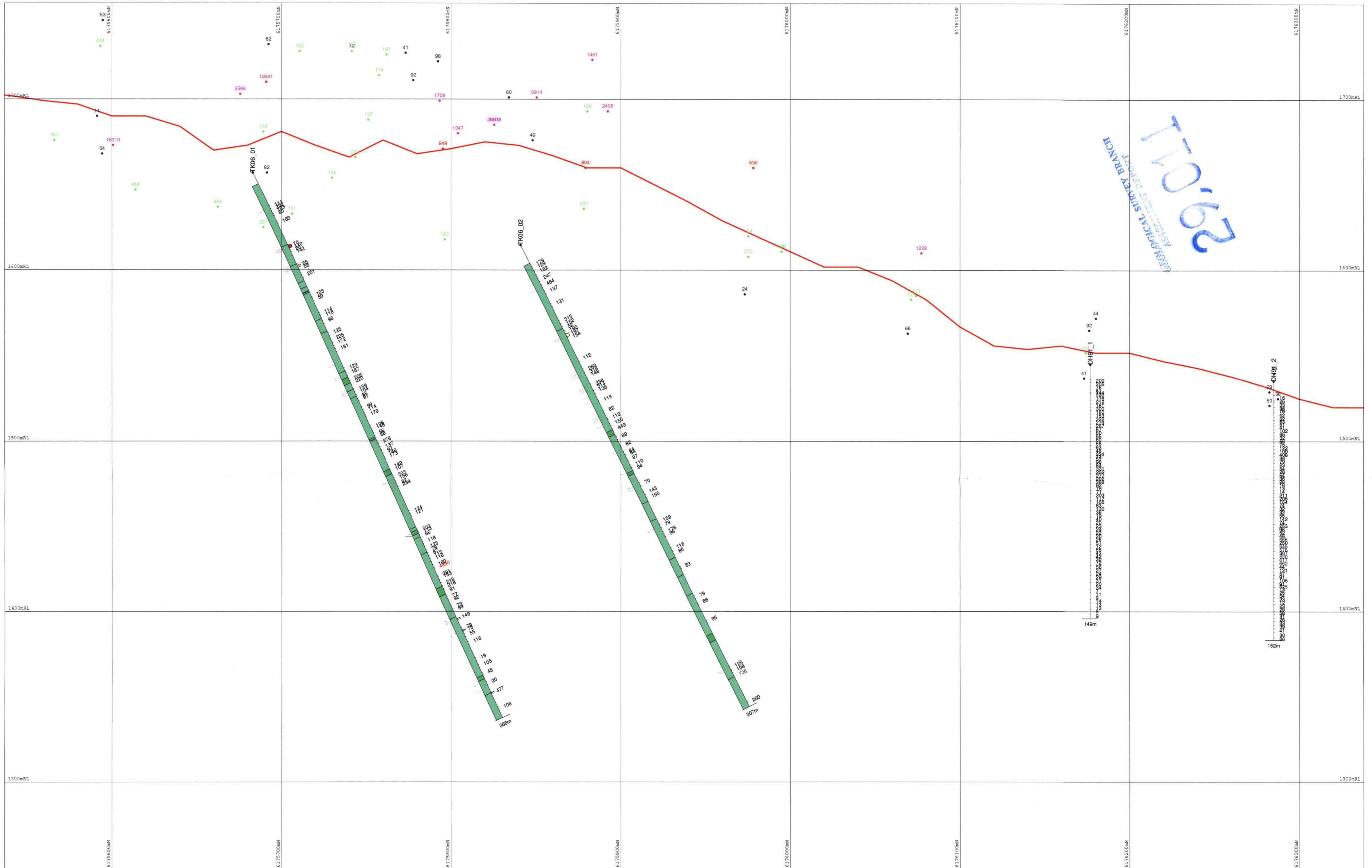
Scale 1:2500	DATE 28/01/2007	SHEET 1 of 1
	REV. No. 1	FILE Tak_plan

0 100m

Tak
Drill Hole Location Plan

GEOINFORMATICS
EXPLORATION

FIG. 4.7



Structure Legend (left side of Drill trace)

	fault - strong intensity
	Fracture - strong intensity
	fault - moderate intensity
	Fracture - moderate intensity

Alteration Legend

	Chlorite-Pyrite-Phyllic		Potassic-Propylitic
	Albite		Phyllic
	Argillite		Phyllic-potassic
	Argillite-Phyllic		Propylitic
	Altered		Propylitic-potassic
	Albite		Propylitic-Phyllic
	Monte-Phyllic		Potassic-Argillite
	Monte-Propylitic		Potassic-Phyllic
	Monte-Propylitic-Phyllic		Potassic-Propylitic

Lith Legend

	Muscovite		Dark matrix plagioclase porphyry
	Ground porphyry		Light porphyry (from historical logs)
	Ground porphyry - coarse phase, less rounded		Unknown rocktype
	plagioclase (large)		SP
	less rounded, large plagioclase		

Scale 1:1000	DATE 28/03/2007	SHEET 1 of 1
	REF No. 1	FILE Sec_360060mE

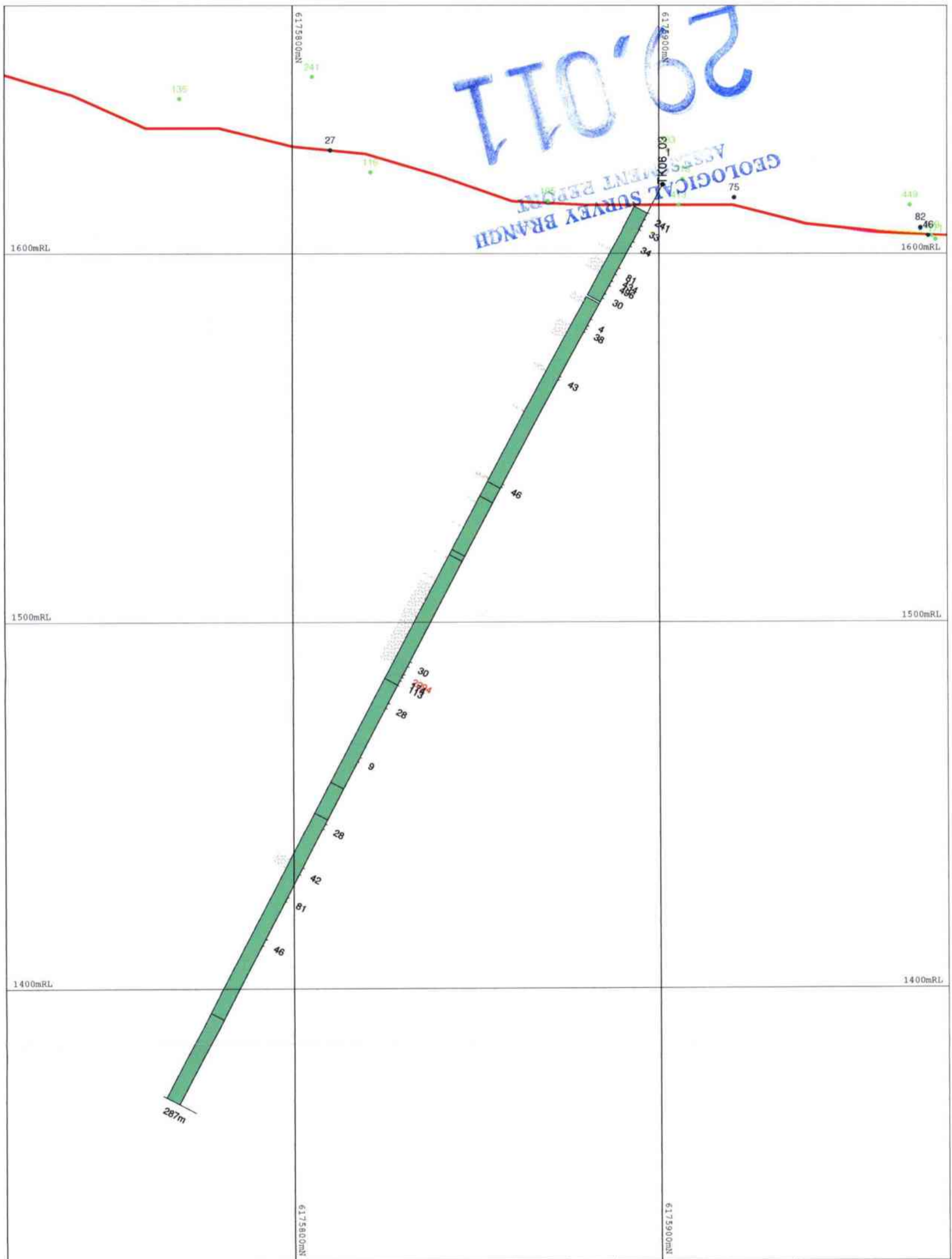
Tak
Drill Section 360060mE
Cu ppm

Fig. 4.8

Geoinformatics Exploration

20,011

GEOLOGICAL SURVEY BRANCH
ASSESSMENT REPORT



Stratigraphic Legend (all sites of GMR base)

—	Soil - strong intensity
- - -	Fracture - strong intensity
—	Soil - moderate intensity
- - -	Fracture - moderate intensity

LRR Legend

■	Micro-dome
■	Coarsened porphyry
■	Coarsened porphyry - coarse phos. low covered
■	Highly altered (highly altered)
■	Low covered, high phos. phos.

LRH Legend

■	Dark altered (high phos. phos.)
■	Dark altered (low phos. phos.)
■	Medium altered (high phos. phos.)
■	Medium altered (low phos. phos.)
■	Low altered (high phos. phos.)
■	Low altered (low phos. phos.)

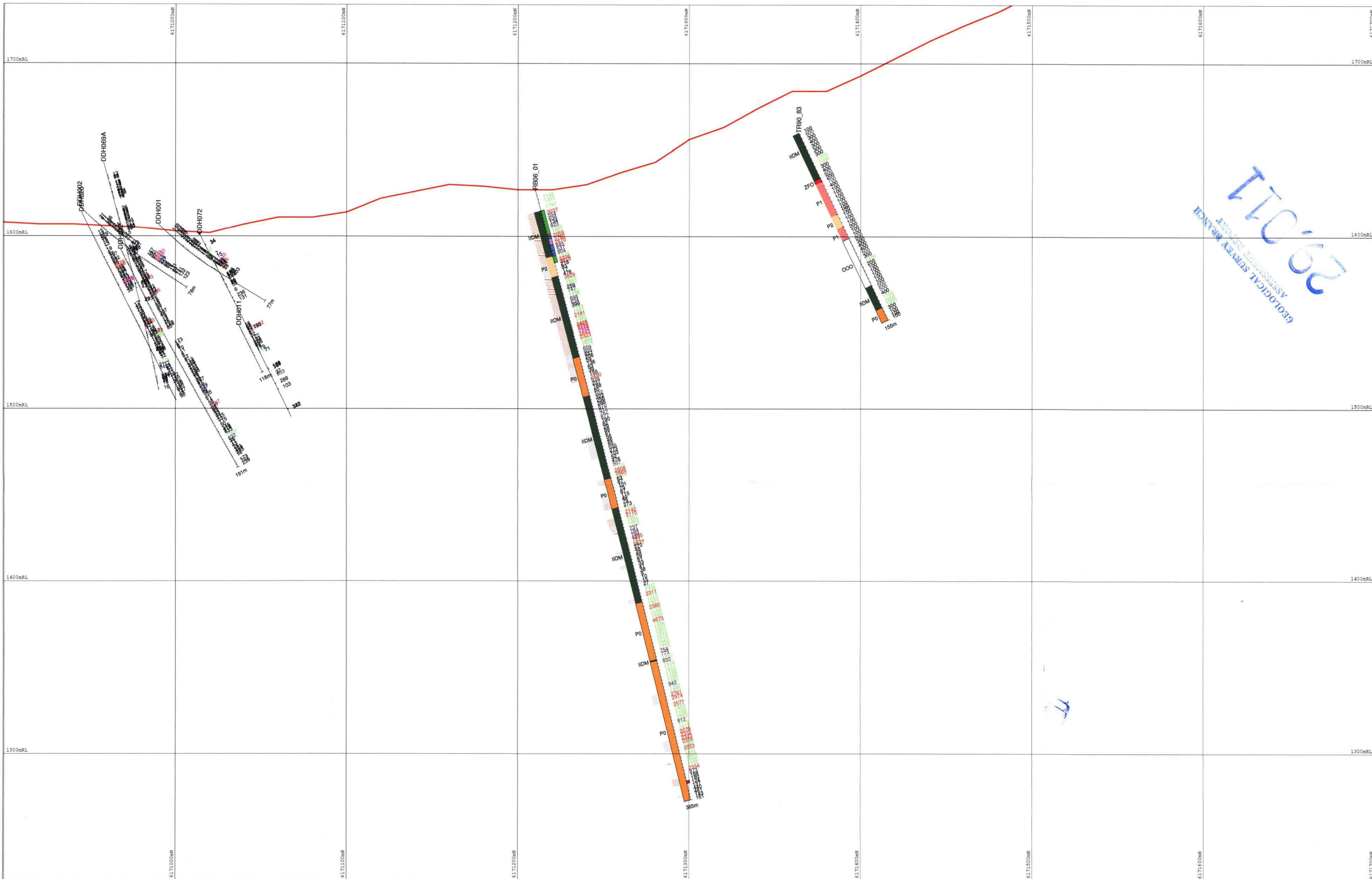
Scale 1:1000	DATE 28/03/2007	SHEET 1 of 1
	REF No. 1	FILE Sec_359400mE

0 25m

Tak
Drill Section 359400mE
Cu ppm

GEOINFORMATICS
EXPLORATION

FIG. 9.9



20121106
 GEOTECHNICAL SERVICES
 ASSESSMENT REPORT

Structure Legend (left side of Drill trace)

	fault - strong intensity
	Fracture - strong intensity
	fault - moderate intensity
	Fracture - moderate intensity

Alteration Legend

	Chlorite-Epiper-Phyllite		Potassio-Propylitic
	Carbonate		Phyllite
	Argillite-Phyllite		Phyllite-potassic
	limonite		Propylitic
	limonite		Propylitic-potassic
	limonite-Phyllite		Propylitic-Phyllite
	limonite-Propylitic		Potassio-Argillite
	limonite-Propylitic-Phyllite		Potassio-Phyllite
			Potassio-Propylitic

Lith Legend

	Muscovite		dark matrix plug phony porphyry
	Crushed porphyry		matrix porphyry (from historic logs)
	Crushed porphyry - concave planes, less rounded		unknown rocktype
	plug-Large Kfajer porphyry		SPD
	less rounded, large plug phony		

Scale 1:1000	DATE 05/12/2006	SHEET 1 of 1
	REF No. 1	FILE Sec_354900mE

Rainbow
 Drill Section 354900mE
 FIG. 4-10

Geoinformatics Exploration

