

RECEIVED

AUG 20 2007

Gold Commissioner's Office
VANCOUVER, B.C.

ASSESSMENT REPORT

ON

GEOCHEMICAL GRID AND SAMPLE COLLECTION

**KEITHLEY CREEK AREA
CARIBOO MINING DIVISION
EVENT NUMBER 4158932
NTS MAP 93A083**

**FOR
NOBLE METAL GROUP INCORPORATED**

**1500 - 543 GRANVILLE STREET
VANCOUVER, B.C.
V6C 1X8**

BY

W.G. TIMMINS P.ENG.

AUGUST 13, 2007

**GEOLOGICAL SURVEY BRANCH
ASSESSMENT REPORT**

29,259

TABLE OF CONTENTS

Summary	1
Introduction	2
Property Description and Location	3
Accessibility, Climate Local Resources, Infrastructure and Physiography	8
Property Geology	9
Work Program	9
Conclusion	11
Appendix 1 Exploration Expenditure	12
Figure 1	Index Map 6
Figure 2	Claim Map 7
Figure 3	Geochemical Grid Map 13

SUMMARY

Noble Metal Group Incorporated contracted a three man technical crew provided by Diamond S. Holdings Ltd. in July, 2007. The crew, supervised by the writer, carried out a line cutting and geochemical soil sampling survey totalling 21.1 kilometres in the Weaver Creek area of the property in order to follow-up previous stream sediment anomalous sample results.

INTRODUCTION

Diamond S. Holdings Ltd. provided a three man crew for the purpose of conducting a geochemical soil sampling survey over a portion of the mineral claims held by Noble Metal Group Incorporated in the Cariboo Mining Division of British Columbia.

PROPERTY DESCRIPTION AND LOCATION

The property is located approximately 21 kilometres north-northeast of the community of Likely, in the Cariboo Mining Division of British Columbia, Canada, NTS 93A073, 93A083 centered approximately at latitude 52° 47' N, longitude 121° 29' W (Figures 1 and 2)

The property consists of 22 four post located claims containing 388 units and 50 located two post claims for a total of 438 units. The claims are contiguous and cover an area of approximately 10, 950 hectares. The property has not been surveyed.

A list of the claims, tenure numbers and expiry dates are tabulated below and illustrated on Figure 2.

<u>Tenure No.</u>	<u>Claim Name</u>	<u>No. Units</u>	<u>Expiry Date</u>
204756	CAC I	20	2009/07/12
204757	CAC II	20	2009/07/12
205123	CAC 3	20	2009/04/16
205124	CAC 4	20	2009/04/16
205125	CAC 5	20	2009/04/16
412720	CAC 6	20	2008/07/23
412721	CAC 7	20	2008/07/25
412722	CAC 8	20	2008/07/24
204351	CASCA 1	8	2009/10/02
204352	CASCA 2	20	2008/10/02
204363	CASCA 3	16	2008/10/23
204364	CASCA 4	16	2009/10/23
410855	CASCA 5	20	2009/05/29
204185	D.D. 2	6	2008/08/17
349094	D.D.3	12	2010/07/14
349095	D.D.4	20	2008/07/19
349096	D.D.5	20	2007/07/19
349097	D.D.6	20	2007/07/17
349098	D.D.7	1	2011/07/16
349099	D.D.8	1	2011/07/16
349100	D.D.9	1	2011/07/16
410856	DOT 1	20	2009/05/29
410865	DOT 2	1	2008/05/27
410872	DOT 3	1	2008/05/27
410873	DOT 4	1	2008/05/27
410874	DOT 5	1	2008/05/27
410875	DOT 6	1	2008/05/27
410876	DOT 7	1	2008/05/27
410877	DOT 8	1	2008/05/27
204123	J #1	20	2008/10/12

<u>Tenure No.</u>	<u>Claim Name</u>	<u>No. Units</u>	<u>Expiry Date</u>
302656	J-2	18	2009/07/16
313489	NMG 1	1	2010/07/24
313490	NMG 2	1	2010/09/24
313491	NMG 3	1	2010/09/24
313492	NMG 4	1	2010/09/24
313493	NMG 5	1	2010/09/24
313494	NMG 6	1	2010/09/24
313495	NMG 7	1	2010/09/24
313496	NMG 8	1	2010/09/24
313497	NMG 9	1	2010/09/25
313498	NMG 10	1	2010/09/25
313499	NMG 11	1	2010/09/25
313500	NMG 12	1	2010/09/25
320311	NMG 13	1	2008/08/07
320312	NMG 14	1	2008/08/07
320313	NMG 15	1	2008/08/07
320314	NMG 16	1	2008/08/07
320315	NMG 17	1	2008/08/07
320316	NMG 18	1	2008/08/07
320317	NMG 19	1	2008/08/07
320318	NMG 20	1	2008/08/07
320319	NMG 21	1	2008/08/07
320320	NMG 22	1	2008/08/07
320321	NMG 23	1	2008/08/08
320322	NMG 24	1	2008/08/08
320323	NMG 25	1	2008/08/08
320324	NMG 26	1	2008/08/08
320325	NMG 27	1	2008/08/08
320326	NMG 28	1	2008/08/08
320327	NMG 29	1	2008/08/09
320328	NMG 30	1	2008/08/09
320329	NMG 31	1	2011/08/09
320330	NMG 32	1	2011/08/09
320331	NMG 33	1	2011/08/09
320332	NMG 34	1	2013/08/09
410850	NMG 35	1	2008/05/27
410851	NMG 36	1	2008/05/27
410852	NMG 37	1	2008/05/27
410853	NMG 38	1	2008/05/27
410854	NMG 39	1	2008/05/28
320338	NMG 40	1	2008/08/10

This report covers work completed and filed as Event Number 4158932 on July 16, 2007 for the claims listed below with their new expiry dates.

<u>Tenure No.</u>	<u>Claim Name</u>	<u>No. of Units</u>	<u>No. of Years</u>	<u>Expiry Date</u>
349096	D.D.5	20	2	2009/07/
349097	D.D.6	20	2	2009/07
204185	D.D.2	6	1	2009/08/
410850	NMG 35	1	1	2009/05/27
410851	NMG 36	1	1	2009/05/27
410852	NMG 37	1	1	2009/05/27
410853	NMG 38	1	1	2009/05/27
410854	NMG 39	1	1	2009/05/28
410865	DOT 2	1	1	2009/05/27
410872	DOT 3	1	1	2009/05/27
410873	DOT 4	1	1	2009/05/27
410874	DOT 5	1	1	2009/05/27
410875	DOT 6	1	1	2009/05/27
410876	DOT 7	1	1	2009/05/27
410877	DOT 8	1	1	2009/05/27

YUKON

ALASKA



BRITISH
COLUMBIA

CARIBOO MINERAL
PROPERTY

Princc
Rupert
QUEEN
CHARLOTTE
ISLANDS

Smithers

Prince
George

Quesnel

Williams
Lake

ALBERTA

PACIFIC
OCEAN

Kamloops

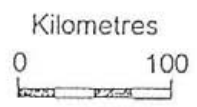
VANCOUVER
ISLAND

VANCOUVER

Hope

VICTORIA

UNITED STATES



NOBLE METAL GROUP INCORPORATED

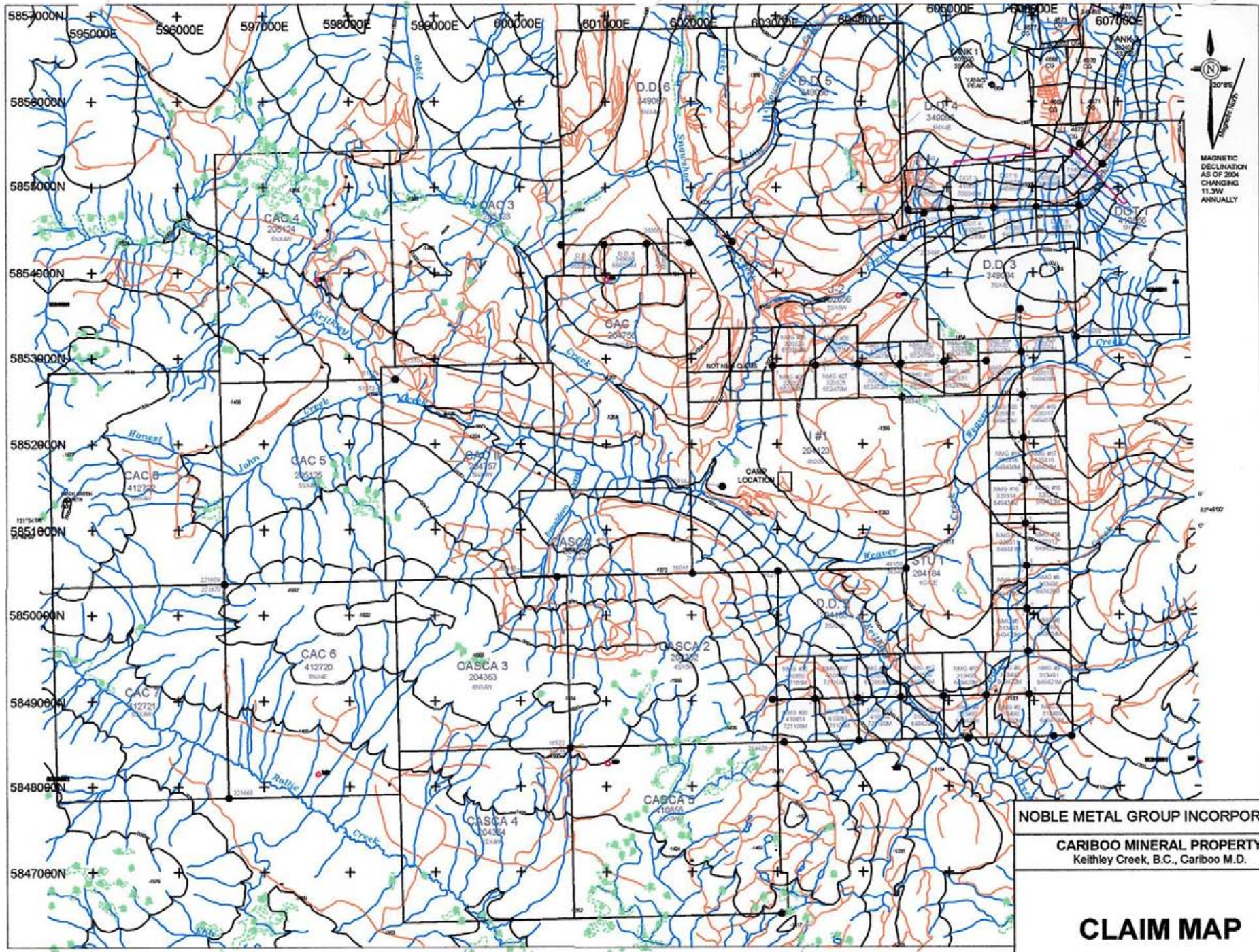
CARIBOO MINERAL PROPERTY
Keithley Creek, B.C., Cariboo M.D.

INDEX MAP

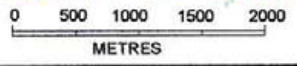
Date: June 2004

Scale: As Shown

FIGURE 1



MAGNETIC DECLINATION
 AS OF 2004
 CHANGING
 11.3W
 ANNUALLY



NOBLE METAL GROUP INCORPORATED

CARIBOO MINERAL PROPERTY
Keithley Creek, B.C., Cariboo M.D.

CLAIM MAP

Date: August, 2007 Scale: 1:60,000 FIGURE 2

ACCESSIBILITY, CLIMATE, LOCAL RESOURCES, INFRASTRUCTURE AND PHYSIOGRAPHY

The property is located in Quesnel Highlands of Central British Columbia with elevations ranging from 1000 to 1500 metres above sea level.

Topography varies from steep along the Keithley Creek and Snowshoe Creek to moderate and gentle at higher elevations.

Keithley Creek flows in a southeasterly direction through the centre of the property with many creeks such as Donaldson, Honest John, Rabbit, Snowshoe and Weaver Creeks flowing into Keithley Creek.

The area receives significant precipitation throughout the year as both rain and snow. Accumulations of snow may reach three metres or more during the winter months. Temperatures can vary from -25°C in winter to $+30^{\circ}\text{C}$ in summer.

The natural vegetation is predominantly coniferous forest consisting of spruce, balsam, firs and cedars. Large portions of the property have been logged by clear cutting and most of these areas have been replanted. Many of the replanted areas contain second growth trees ranging from three to ten metres in height.

Access is provided by an all-weather logging road to Keithley Creek from the community of Likely, B.C. From the old settlement of Keithley Creek, on Cariboo Lake, a logging road on the north side of Keithley Creek leads to the property. A network of logging and skid roads provide good access to all areas of the property, although some upgrading may be required.

A logging road also leads to the Keithley-Rabbit grid area from Cariboo Lake parallel to Keithley Creek on the south side.

The community of Likely, situated on Quesnel Lake, is reached by paved highway from a point on Highway 97 about 12 kilometres of the Town of Williams Lake. Distance from Highway 97 to Likely is approximately 90 kilometres.

Williams Lake is a logging and lumber centre serviced by scheduled daily air service from Vancouver. Necessary supplies and equipment as well as local labour and modern communications are readily available.

Power for exploration purposes would be supplied by portable generating units if required, while water services are plentiful from the numerous creeks and rivers.

PROPERTY GEOLOGY

The claims of the Noble Metal property are underlain by rocks of the Ramos succession of which interbedded quartzite and phyllite are most abundant. The age of the Ramos succession is believed to be Hadrynian. A limestone formation is present in the Keithley-Rabbit Creek area (Bralco?).

The quartzite is olive to grey on fresh surfaces, is poorly sorted and generally medium to coarse grained. The quartz clasts are predominately glass clear and grey with minor blue. The quartzite is usually micaceous and sericite, epidote, muscovite, chlorite and biotite occur along foliations. Some sections of the quartzite are weakly calcareous.

The phyllite varies from olive, grey to black with chlorite and accessory pyrite, and pyrrhotite. There is often rhythmic banding within the phyllite and contacts between the quartzite and phyllite are usually sharp. The limestone is grey to black with marbly sections, commonly vuggy with quartz and carbonate bands and stringers.

The main structure in the area is the Keithley Creek Thrust that runs from Shoal's Bay on Quesnel Lake northwest up Keithley Creek and crosses Lightning Creek in the Wingdam area. A north-south fault which may be a continuation of the Antler Fault continues from the southern end of Bowron Lake southwards towards Snowshoe Creek, and the lower portion of Rabbit Creek, towards the Keithley Thrust.

The quartzites, phyllites and greywackes are intruded by dioritic rocks and several zones of mafic, ultramafic and altered ultramafic rocks.

WORK PROGRAM

A geochemical grid, totaling 21.2 km was emplaced covering all or portions of the mineral claims listed below: (see Figure 3)

	Tenure No.	Claim Name
	349094	D.D. 3
	204184	STU 1
	320315	NMG 17
	320316	NMG 18
	320317	NMG 19
	320318	NMG 20
	320319	NMG 21
	320320	NMG 22
	320321	NMG 23
	320322	NMG 24
	320331	NMG 33
	320332	NMG 34

The baseline is oriented in a north-south direction with crosslines striking east-west. Spacing between the lines is 100 metres and samples were collected every 25 metres along the lines. All samples were placed in kraft bags and marked with line co-ordinates.

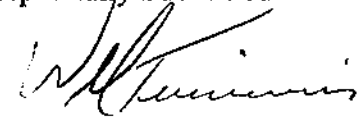
The samples were transported daily to the Noble camp, dried and placed in sealed rice sacks and stored in a secure building. On completion of the project, all samples were transported by the crew chief to the laboratory in Vancouver for analysis, now in progress.

Upon receipt of analysis, results will be correlated and entered into a computer program in order to produce contoured maps.

CONCLUSION

Upon processing and assessing the results from analysis of the collected soil samples, further work to investigate anomalous conditions will be considered and a follow-up program will be recommended.

Respectfully Submitted

A handwritten signature in black ink, appearing to read 'W.G. Timmins', written in a cursive style.

W.G. Timmins P.Eng

August 13, 2007

APPENDIX I

DIAMOND S HOLDINGS LTD.

818 - 470 Granville Street
Vancouver, B.C. Canada V6C 1V5

INVOICE - 2007-12

To: Noble Metal Group Incorporated
1501 - 543 Granville Street
Vancouver, B.C.
V6E 1X8

July 16, 2007

Re: **LINE CUTTING AND GEOCHEMICAL SURVEY**
July 2nd to 13th, 2007
Keithley Creek Area, B.C.

Manpower	3 men x 12 days = 36 man days 36 man days @ \$325/day		\$ 11,700
Food/Accommodation	36 man days @ \$125/day		4,500
Equipment Rental	4x4 Truck - 12 days @ \$100/day	\$ 1,400	
	Gas and Oil	<u>443</u>	1,643
	Chain saw - 12 days @ \$20/day	\$ 240	
	Gas and Oil	<u>43</u>	283
Miscellaneous	Flagging, topothread, clinometers, Silva compasses, felt pens, GPS's, sample bags, pickets, highway tolls		<u>800</u>
	TOTAL THIS INVOICE		\$ <u>18,926</u>

Paul
June

July 30, 2007

WGT CONSULTANTS LTD.
1016 - 470 GRANVILLE STREET
VANCOUVER, B.C.
V6C 1V5

In account with

NOBLE METAL GROUP INCORPORATED
1501 - 543 GRANVILLE STREET
VANCOUVER, BC
V6C 1X8

INVOICE 007 - 21

Layout and supervision of line grid
and geochemical sampling

3 days @ \$450/ day	\$1350
5 days truck rental	250
Gas, oil & misc. exp.	<u>239</u>
TOTAL	\$1839

