

2006 - 2007

## PROSPECTING REPORT

"Sowaqua One Property"

EVENT # 4158371      TENURE # 536937

Tenure Name: GPEX LXLVII

Coquihalla Gold Belt Region

New Westminster District

Map 092H

Coordinate Reference

Long. 121° 11' 53.2" W - Lat. 49° 23' 37.0" N

Date of Report - September 30, 2007

Tenure Owner - William Larry Amey

FMC 145191

GEOLOGICAL SURVEY BRANCH  
ASSESSMENT REPORT

29,329

## INDEX

Page	i.....	Copy of Tenure Renewal
	1.....	Cover Page
	2.....	Index
	3.....	Introduction & Location / Access / Previous Work / General Geology
	4.....	General Geology cont'd / Tenure Geology / Exploration Summary / Conclusion
	5.....	Work Record / Evaluation of Work & Cost Statement / Attending Parties & Qualifications / Affidavit
	6.....	General Location Reference - Map 1
	7.....	Prospected Area/s - Map 2
	8.....	Contour Map - Map 3

**Note: Unless otherwise referenced, map submissions are enhanced excerpts from the BC Ministry's Provincial Mapping System. Scale as that shown.**

## **Introduction & Location**

The Sowaqua One mineral claim, (GPEX LXLVII, # 536937), lies approximately 16 air kilometers east of Hope, and is situated along Sowaqua Creek, a northwesterly flowing tributary of the Coquihalla River. Originally staked as a five-cell tenure on July 11, 2006, the claim was more recently reduced to one cell in size. The property lies along the Coquahalla Gold Belt, a northwest trending mineralized zone, underlain by the Hozameen Fault. The general area is well notarized as hosting gold-bearing mineralization, with the Carolin Mine situated approximately 13.5 kilometers to the north-northwest.

## **Access**

Access to the property would be considered excellent, gained via a good two-lane gravel forestry road, leaving BC Highway #5 (the Coquihalla Highway) fifteen kilometers north of the BC Highway #3 intersect (or otherwise, nine kilometers north of the Kawkawa Lake exit).

## **Previous Work**

Previous work conducted in the generalized area would primarily comprise that of the prospecting conducted by A. Guyon, operator of the work done on the A&W claim. Historically, placer gold and platinum had been recovered at creek level and from shafts, during the 1920's. Placer operations were reported to have yielded some \$4400 in gold (about 7298 grams of gold) and \$600 in platinum.

## **General Tenure Area Geology**

The tenure area's generalized geology is best described in Minfile report 092HSW080, in referring to the A&W showing, located one kilometer to the south of the Sowaqua One tenure, and, the St Patrick showing (Minfile report 092HSW044), located 2.3 kilometers to the west. As described therein, the area is underlain by Permian to Jurassic Hozameen Complex rocks comprised mainly of interbedded chert, pelite and volcanic sandstones with distinct grey and black banding. The pelite is dark green and chloritized, with traces of calcareous and weakly hematitic bands. Minor quartz veinlets and secondary pyrite veinlets crosscut these metasediments. The Hozameen Complex is intruded by sill-like bodies of quartz diorite which are weakly foliated. The Hozameen fault traverses south-southeast separating the lower greenschist facies rocks of the Hozameen Complex from unmetamorphosed Mesozoic rocks to the east. Ultramafic rocks are cut by greenstones of the Hozameen Complex which generally occur along this fault. There is extensive shearing along the contact and in places the ultramafics appear to be intrusive. The ultramafic rocks which occur along the Hozameen fault are part of the Coquihalla Serpentine Belt.

In 1980, at the A&W showing, samples were collected from a highly altered pelite close to a serpentinitized intrusion. The intrusion is described as having a granitic texture with chlorite and soft talc with clusters of radiating andalusite crystals. The pelite hosts secondary quartz and pyrite veinlets. Also, intense limonitic staining occurs adjacent to the intrusion. A grab sample from the pelite assayed 0.34 gram per tonne gold (Assessment Report 9581). Drilling in 1983 indicated short intervals of chlorite-silica- pyrrhotite in the black argillite which hosts disseminated to massive pyrrhotite. The argillite also contains quartz stringers with disseminated pyrrhotite. The pyrrhotite-rich sections in the argillite are oxidized and are associated with limonite and hematite. Thirty-three samples containing silica with visible pyrrhotite and pyrite were assayed. Assays yielded traces of gold, silver, copper and nickel (Assessment Report 11449).

At the St. Patrick showing, mineralization occurs along the contact between the serpentinite and diorite intrusion. Numerous quartz-carbonate veinlets crosscut the serpentinite. The veins and fracture fillings range from 2.5 to 20 centimetres in width. In 1983, samples collected from the quartz-carbonate veinlets averaged 0.343 gram per tonne silver and 0.034 gram per tonne gold. Samples collected from the serpentinite assayed 0.034 gram per tonne gold, 0.343 gram per tonne silver, 0.186 per cent nickel and 0.213 per cent chromium. Another sample assayed 0.213 per cent nickel and 0.069 per cent chromium. The laboratory testing facility found it difficult to dissolve and analyse the samples for chromium (Assessment Report 11449).

### ***Sowaqua One Geology***

The underlying geology of the immediate tenure area remains somewhat vague, as the claim primarily comprises considerable overburden.

### **Exploration Summary**

Reconnaissance prospecting was focused around inspecting along Sowaqua Creek for bedrock outcrops, thence along a draw trending southeastward (as indicated by red arrowed marking on Map 2, hereto attached), on the southwest side of the creek. Two chip samples were collected along the draw, one each from scant outcrops hosting minute quartz veinlets in a perlite base, with sparse showing of pyrite blebs. When examined under microscope (300x), neither sample showed traces of gold (Au) or silver (Ag).

### **Conclusion**

Based on the foregoing, which was inconclusive in identifying to the actual potential of the claim area, it was felt the claim should be renewed for a subsequent year to enable further evaluation.

**Work Record - Evaluation & Cost Statement - Affidavit**

**Work Record**

Work Date	Time Log	Manpower	Comments	Total Hours
<b>Labor</b>				
Jul 29, 2006	1000 - 1400	self	Prospecting	4.00
			<i>Total Hours</i>	4.00
Allowable Credit Rate		4.00 hours @ \$20.00 per hour >		<b>\$ 80.00</b>
Total Allowable Work Credit				<b>\$ 80.00</b>

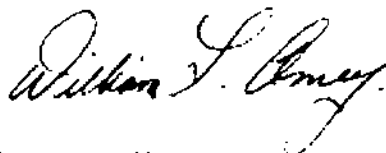
**Evaluation of Work  
&  
Statement of Costs**

1 person	4.00 man hours
Supervisory	\$ 0
Labor	\$ 80.00
Meals	\$ 13.00
Accommodations	\$ 0
<i>Sub Total</i>	\$ 93.00
Allowable Vehicle Exp	\$ 18.60
Report Preparation	\$ 0
<b>TOTAL</b>	<b>\$ 111.60</b>

**Attending Parties & Qualifications:**

Larry Amey - - 28 years intermittent general prospecting experience

October 1, 2007



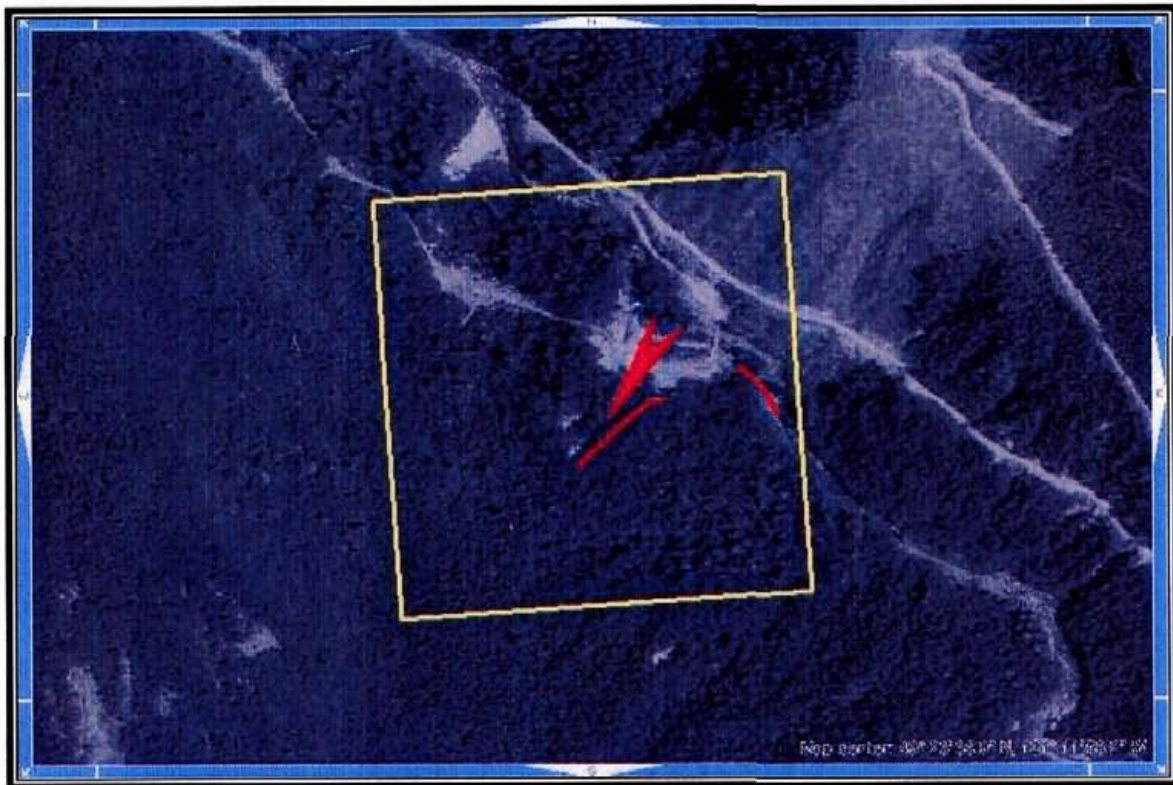
Report prepared by:  
William "Larry" Amey



**REFERENCE MAP 2**

**Tenure Plotted**

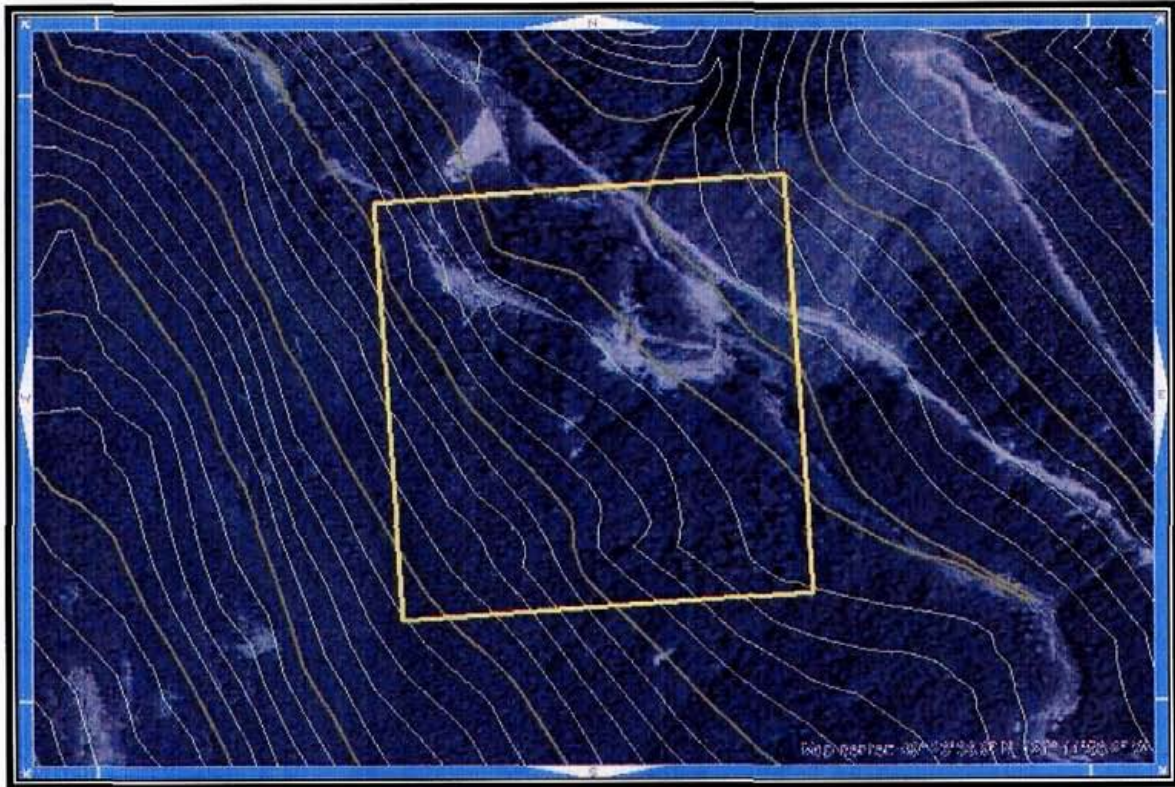
**Area of Work**  
(Signified by Red Markings)



Scale 1: 5,000  
Map 092H Excerpt  
Tenure Coordinate Reference  
Long. 121° 11' 53.2" W – Lat. 49° 23' 37.0" N



**REFERENCE MAP 3**  
**Contour Map of Tenure Area**



Scale 1: 5,000  
Map 092H Excerpt  
Tenure Coordinate Reference  
Long. 121° 11' 53.2" W – Lat. 49° 23' 37.0" N

Event 4158371