

ASSESSMENT REPORT

WWW AREA PROJECT

**BC Geological Survey
Assessment Report
29607**

Spectral Analysis Study of the JASMINE Claim

Tenure #518443

**EVENT #
4169130**

Alberni Mining Division
NTS 092F02E
92F.007
UTM Zone 10 N (NAD 83)
Lat: 19.0240° Long: -124.6919°
Northing: 5431298
Easting: 376285

(Associated Minfile # 092F 380
ARIS #s: 16119; 14987; 14520; 12735; and 28289)

For
Julie P. McLelland
FMC 144032

By
Auracle Geospatial Science Inc.
325 Dorset Road
Qualicum Beach B.C.
V9K 1H5
(250) 738-0459

April 10 2007

Table of Contents

Executive Summary.....	3
Introduction.....	4
Location and Access.....	4
Mineral Tenure Status.....	4
Physiography.....	4
Previous Work.....	4
Geology.....	5
Mineralization.....	5
Field Work.....	5
Conclusions.....	6
Statement of Work and Costs Cost Report.....	6

Figures

1. General Location 1:100,000 Map.....	13
2. Tenure Access 1:50,000 Map.....	14
3. Tenure and Geology 1:10,000 Map.....	15
4. Traverse and sample location 1:5000 map.....	16

Appendices

- II Statement of Qualification

EXECUTIVE SUMMARY

Auracle Geospatial Science Inc. was asked in 2007 by Julie. P. McLelland to carry out a Spectral Analysis program on the WWW mineral claims which had been staked for their precious and base metal (Copper) potential. Subsequent to this work, the Jasmine Claim (BC mineral tenure # 518443) was acquired which is adjacent to and South east of the WWW claim (BC mineral tenure # 516512)

Geologically this area consists of Karmutsen Volcanic basalts, Island Plutonic Suite granodioritics, Bonanza Group Calc-Alkaline volcanics, and Vancouver Group sedimentary rocks with two mapped faults, one trending North and the other trending North East and converging on the LES claim. A short program of work on the Jasmine Tenure was designed to carry out ground truthing, and geologic/topographic feature location, and conduct exploration, to attempt to discover any possible extension of the WWW vein system. Preceding work on the surrounding tenures by the author involved spectral analysis of the surrounding tenures including the acquisition of satellite spectral data available from NASA, pre-processing the data into a workable format, orthorectifying and georeferencing to TRIM map data, atmospheric correction, noise reduction with rigorous and extensive classification of the data in search of indicators, or relationships that might lead to the discovery of metallic mineralization. While Spectral Analysis is still young, this program was not meant to be a research project but rather to apply recently developed technologies and methodologies together with the latest computer software available for spectral analysis as a tool for mineral exploration.

This spectral analysis program was highly labour and computer intensive. Tenure files were subject to classification and analysis resulting in numerous images for examination. These Classification images were examined for correlation to known or mapped contacts and surface geology. Spatial correlation was not considered to be conclusive however there are several resulting alteration signatures and mineral end members were identified. Ground work on the Jasmine, was decided as an opportunity to ground truth and explore anomalous spectral results on the Jasmine tenure. It is therefore advised that follow up PIMA Spectral study be carried out to examine these relationships.

Auracle Geospatial Science Inc.
April 2007

INTRODUCTION

In December 2003 the WWW mineral tenure was staked over the historic WWW mine site and newly discovered mineralization. This prospective ground hosts several known Au Ag mineralized quartz veins. The rising demand for these metals on the world market was added incentive for these acquisitions. Following the WWW acquisition the JUL tenure and TRM tenure were staked for the likelihood of a trend of mineralization continuing through these tenures. Later the LES and JASMINE tenures were acquired for the same reasons.

Julie McLelland asked Auracle Geospatial Science Inc. to conduct exploration to search for likely extensions to the established neighbouring mineralization on the Jasmine tenure in follow up to a recent spectral study, which while performed on surrounding tenures did include the Jasmine Claim.

Spectral analysis is a recent and still developing exploration tool. David McLelland has gained valuable experience in the use of spectral data as part of his Post Graduate Diploma, Master of Science, and industry training and certification programs.

Alteration and surface mineralization mapping by remote sensing have become accepted methods in mineral exploration. This work program has provided further information and insight into the surface constitution of this mineral tenure.

LOCATION AND ACCESS (See Figure 1 – General location Map)

The Jasmine tenure is located 31 kilometres southeast of the City of Port Alberni on the west Coast of Vancouver Island British Columbia. Access to the general area is by the Port Alberni- Bamfield Road which generally follows the south shore of Barclay Sound. Proceeding approximately 21 kilometres south west to Corrigan Main Logging Road, turn left (east) and continue for to the WW mining bridge (to the South). Proceed up the hill keeping to the right at the only major fork in the road. This spur road is the access road to the area west of the Jasmine tenure. Near the terminus of this spur there is a freshly logged slope which leads toward the top and the Jasmine Tenure, and is accessible only on foot. Helicopter access is also possible as the top is quite barren; however the traverse to the tenure is only about ½ kilometre. The central geographic coordinates are: UTM10N 376285metres East and 5431298metres North.

PHYSIOGRAPHY figure2

This prospect area is situated on the South side of the Corrigan Creek on an unnamed mountain peak. The western section of this tenure consists of high cliffs above steep rugged ground. Elevation ranges from 860 to 1200 metres. The tenure mountainsides are treed with mature second growth Fir, Balsam, Hemlock and Cedar timber. Ground cover is thick salal in the lower elevations. This area can still be snow covered in spring.

MINERAL CLAIM STATUS

This Claim is held in Good standing by Julie. P. McLelland. The Jasmine claim includes 42.371 hectares of mineral tenure. Julie enjoys a 100% unencumbered interest in this claim, and holds the adjacent WWW mineral tenure. Please refer to the cover confirmation sheet for further information.

PREVIOUS WORK

Little recorded work is attributed to the ground encompassed by this tenure; the tenures adjacent however include a number of Minfile occurrences. The author had occasion to prospect this claim in 2007 and the results were not remarkable. There is no record of previous work within the tenure boundaries

GEOLOGY figure3

According to provincial geological survey mapping, this area is underlain by intrusive Island Plutonic Granodioritics near a western contact with Karmutsen Volcanic basalts.

MINERALIZATION

Mineralization on the Jasmine claim consists of minor disseminated sulphides in altered granodiorite.

FIELD WORK figure 4

Field work in 2007 was comprised of ground truth location of and three days of in April exploration for anomalous mineralization, traverses were taken and samples collected for further analysis

CONCLUSIONS

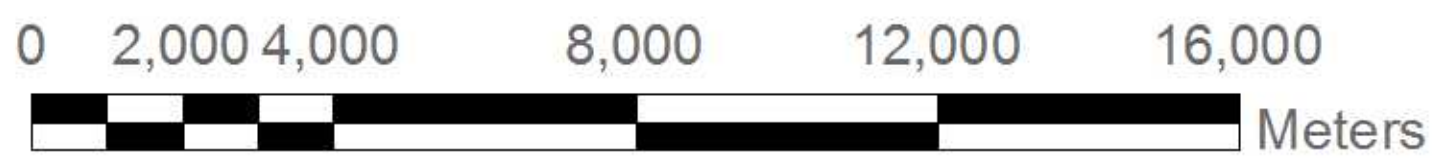
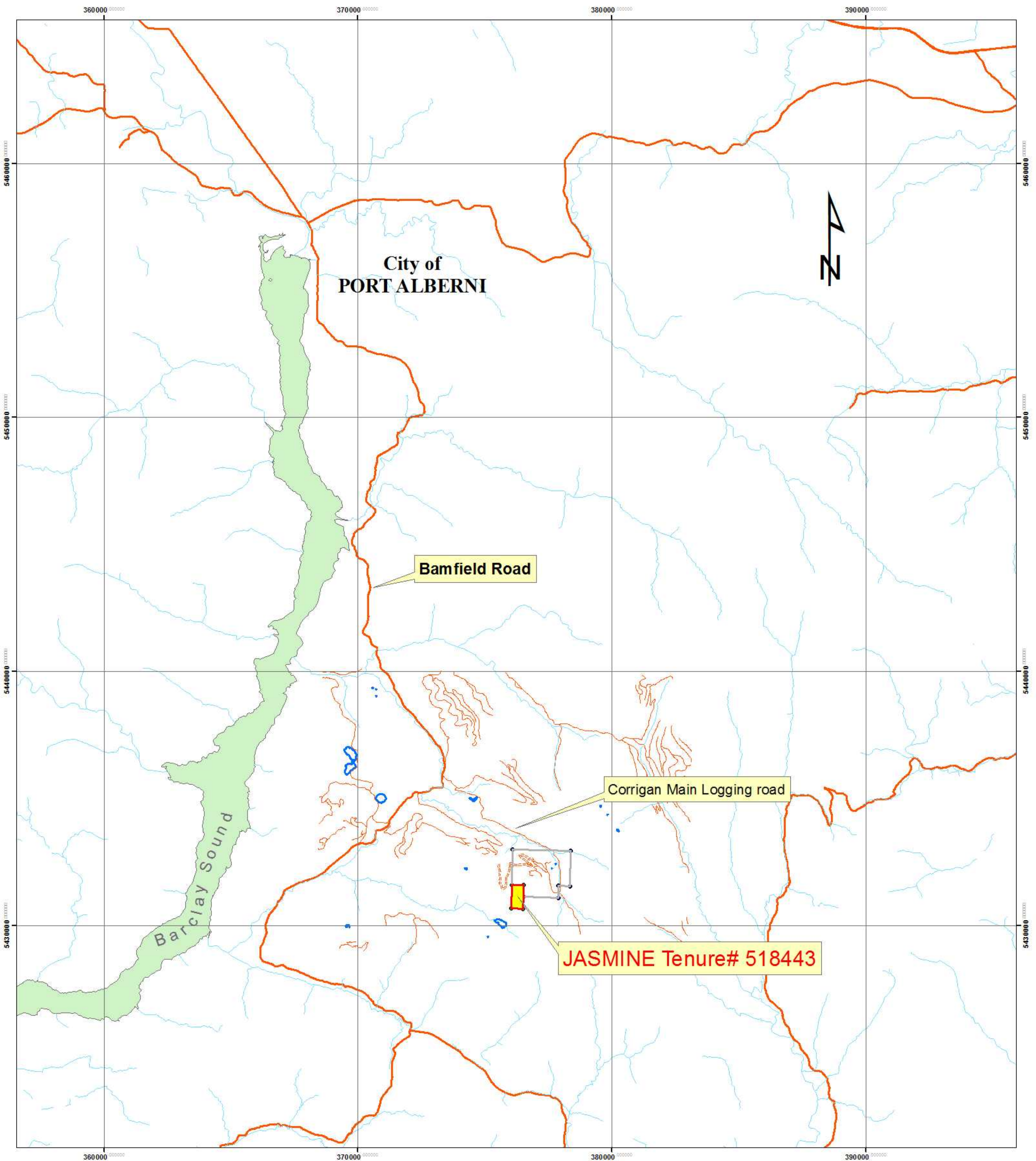
This Tenure lies between several well documented mineral occurrences, and has only recently benefited by logging road construction. It is recommended that the tenures be further explored using CDGPS controlled ground truth SWIR portable spectrometry to explore for further indications of copper skarns in the upper (north west)valley.

Statement of Work and Costs

This work was carried out by Auracle Geospatial Science Inc. for Aldershot Resources Ltd. between April 9 and April 11 2007and fulfils the requirements of assessment work on the Tenure shown. Field work consisted of a three day GPS verification of roads and access by the author. Work is as disclosed on the following table of costs.

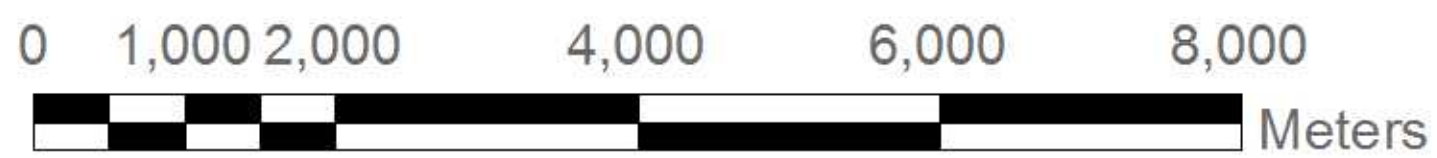
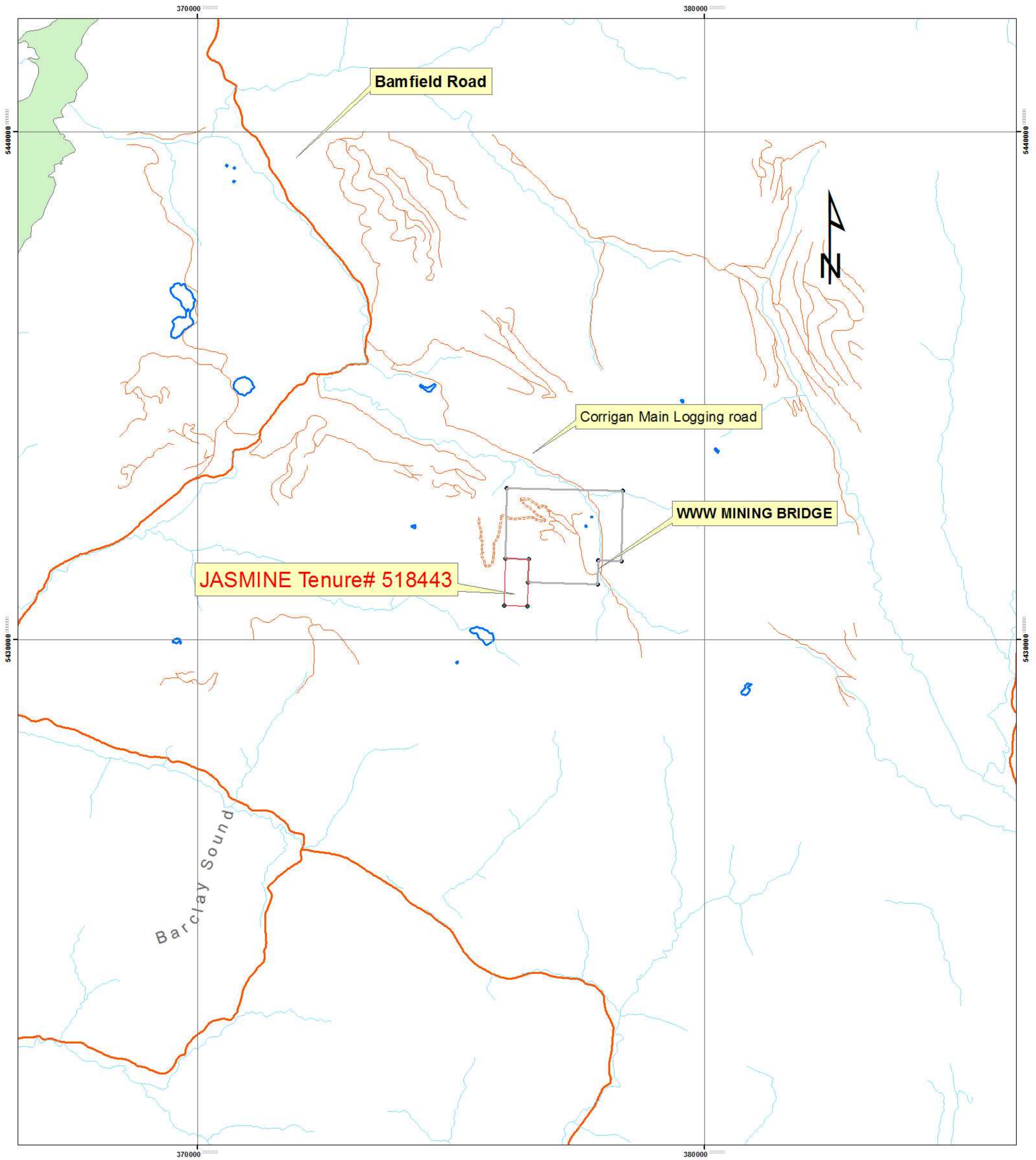
Tenure #518443 Statement of Work/Costs:

1	3 days x 12 hours @20.00.....	720.00
2	2 day UNIMOG	300.00
3	CDGPS unit 30 days.....	30.00
4	Chainsaw etc.....	50.00
		Total: 1100.00



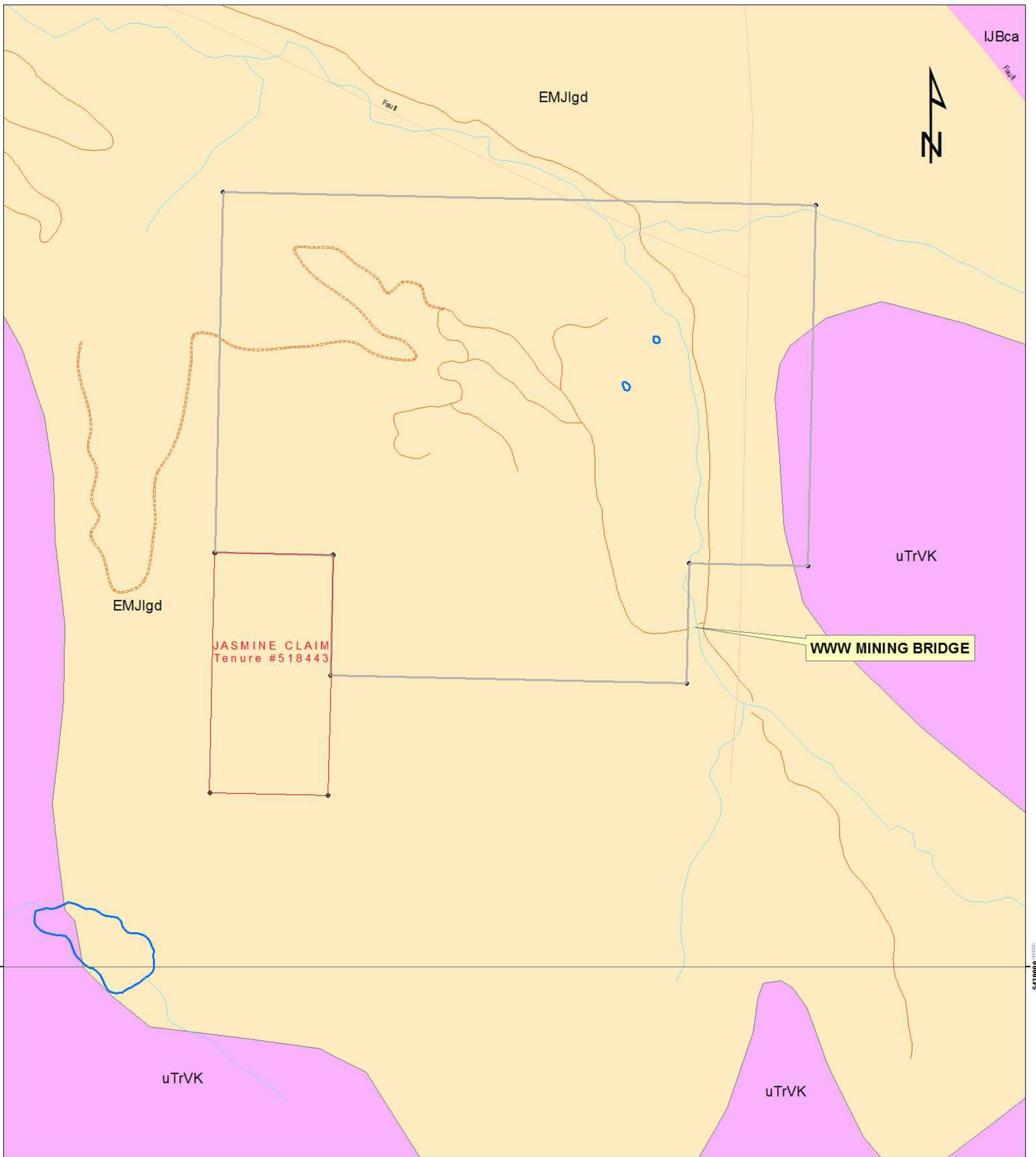
1:100,000

WWW Claim Group
JASMINE Claim
BC Mineral Tenure
#518443
General location



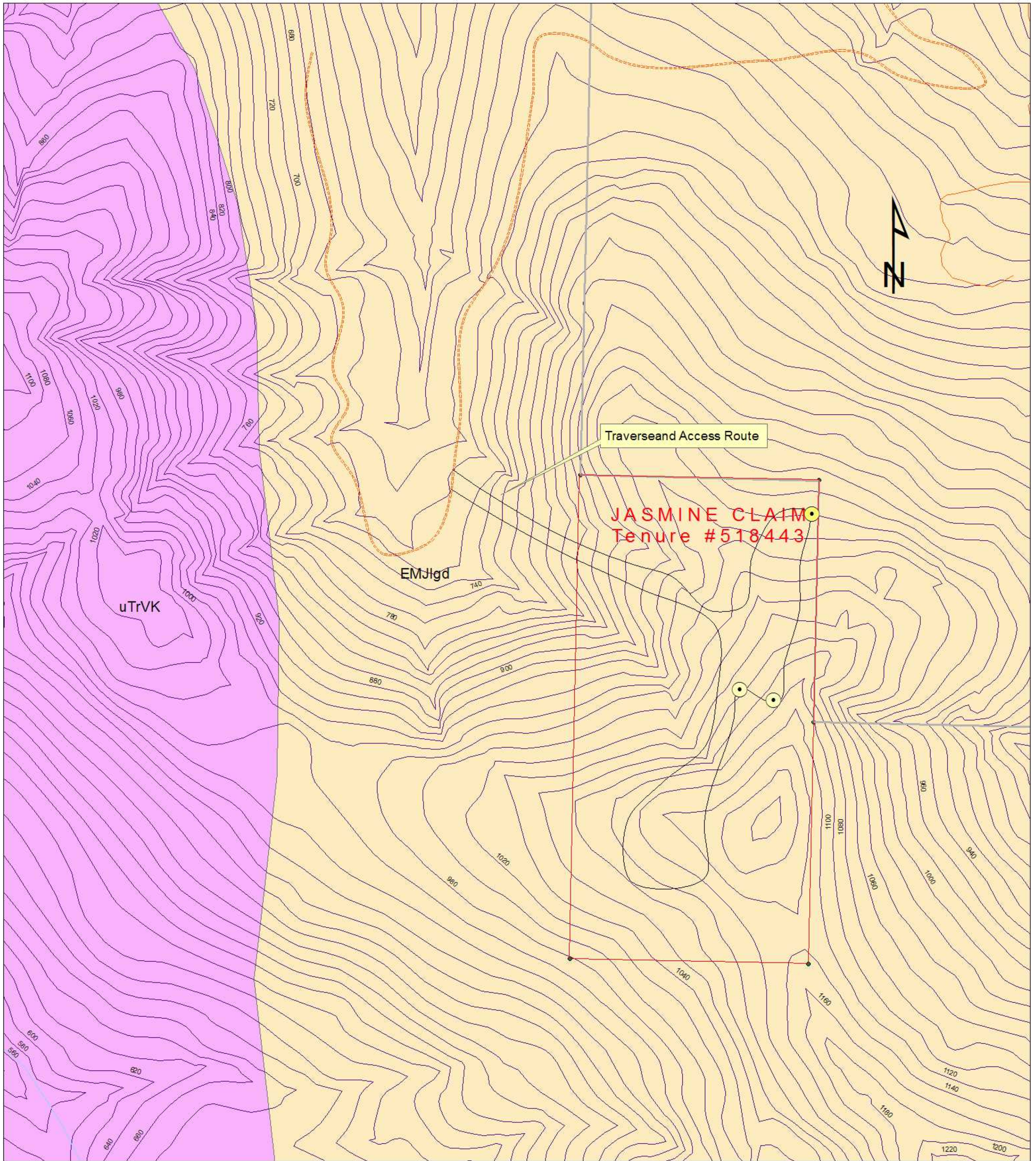
1:50,000

WWW Claim Group
JASMINE Claim
BC Mineral Tenure
#518443
General Access



1:10,000

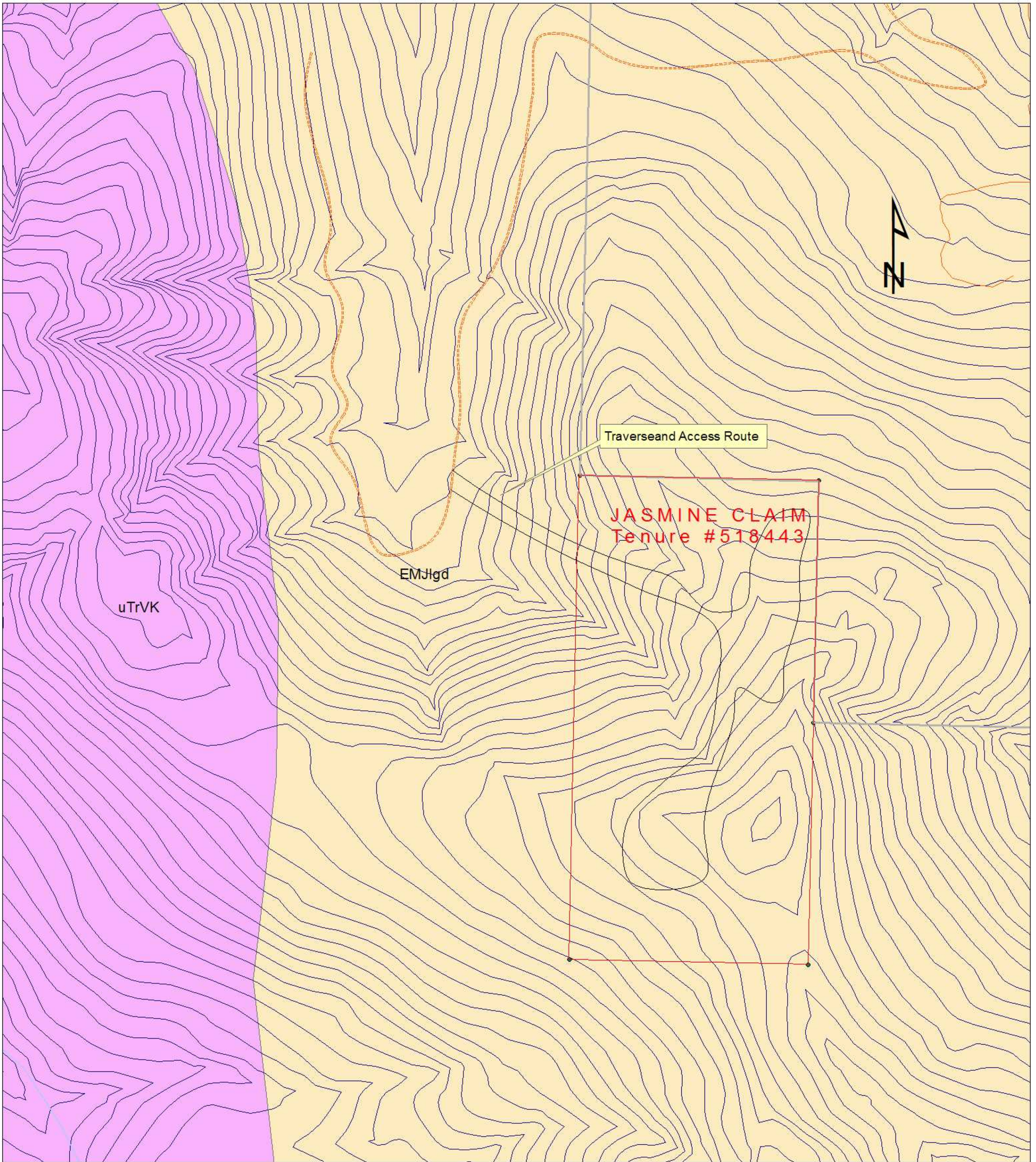
WWW Claim Group
JASMINE Claim
BC Mineral Tenure
#518443
Regional Geology



1:5,000

● Sample Points

WWW Claim Group
JASMINE Claim
BC Mineral Tenure
#518443
Access to Tenure



1:5,000

WWW Claim Group
JASMINE Claim
BC Mineral Tenure
#518443
Access to Tenure

Statement of Qualification

I, David J. McLelland, do hereby certify that:

1. I am a Principal in:
Auracle Geospatial Science Inc,
325 Dorset Road Qualicum Beach,
British Columbia, Canada V9K 1H5
2. I am a post graduate student of Earth and Environmental Science and have completed the postgraduate certificate in applied and theoretical GI Science at Simon Fraser University, and completed the academic component of the MSc. program requirement. This work is also in partial fulfillment and serves as base data for a thesis.
3. *I have completed the B.C.I.T. B.C.Y.C.M. Mineral Exploration program, and Completed the B.C.I.T.1 B.C.Y.C.M. Advanced field School.*
4. I am the Project Manager and I am responsible for the collection and management of data and execution of analysis.
5. This report was prepared on behalf of Auracle Geospatial Science who has been engaged by Julie McLelland. to complete a work program on these properties.
6. I have no material or financial interest in the subject properties or the companies that own them.
7. This report has been prepared in accordance with generally accepted Scientific Principles and is based upon the best information available at the time of preparation. I am not aware of any material fact or material change with respect to the subject matter of the report that is not reflected in the report and therefore the omission of

Date: April 13, 2007
Qualicum Beach, British Columbia

David McLelland